

V&V Reference Report

L2 ASCDS Version : 8.4.4

Observation 13678 - L2 Version 2
Chandra X-Ray Center

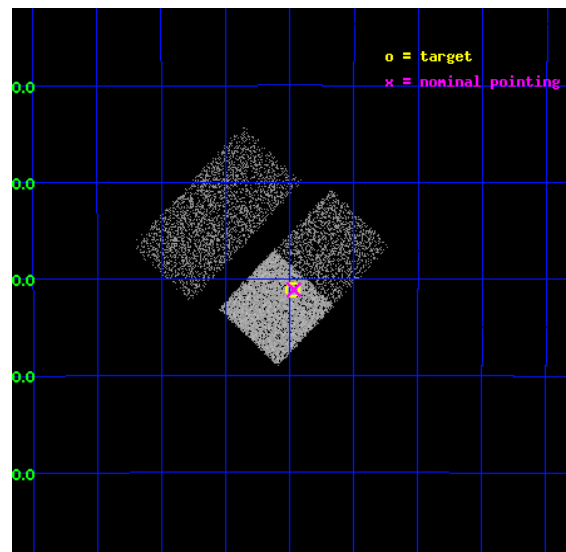
L2 Processing Date : May 23 2012

Contents

1	Front	2
2	OBI	3
2.1	OBI	3
2.1.1	Images	3
2.1.2	Bias	3
2.1.3	Parameters	4
2.1.4	Events	4
2.2	Compared Parameters	5
2.3	Aspect	6
2.4	Star Slots	9
2.4.1	Slot 3	9
2.4.2	Slot 5	10
2.4.3	Slot 6	11
2.4.4	Slot 7	12
2.5	FID Slots	13
2.5.1	Slot 0	13
2.5.2	Slot 1	14
2.5.3	Slot 2	15
A	Summary	16
A.1	Status	16
A.2	Comments	16

1 Front

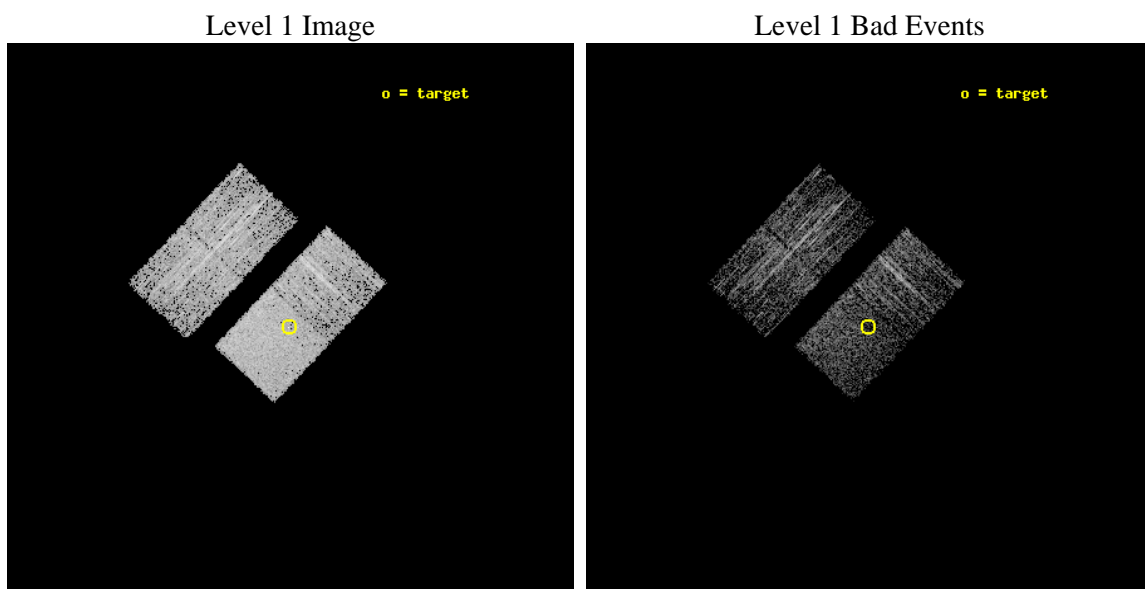
seq_num	300309	Sequence number
obs_id	13678	Observation id
title	Probing Coronal Supersaturation in Pre-Cataclysmic Binaries with M-type Companions	Proposal title
observer	Dr. Jeremy Drake	Principal investigator
object	LTT560	Source name
dtcycle	0	
cycle	P	events from which exps? Prim/Second/Both
ra_targ	14.870417	Observer's specified target RA [deg]
dec_targ	-26.518056	Observer's specified target Dec [deg]
ra_nom	14.867026406304	Nominal RA [deg]
dec_nom	-26.518802133213	Nominal Dec [deg]
roll_nom	133.33107987316	Nominal Roll [deg]
revision	2	Processing version of data
ontime	3077.2730703354	Sum of GTIs [s]
livetime	3037.066232216	Livetime [s]
ontime2	3077.1499503255	Sum of GTIs [s]
ontime3	3077.1909903288	Sum of GTIs [s]
ontime6	3077.2320303321	Sum of GTIs [s]
ontime7	3077.2730703354	Sum of GTIs [s]
l2events	15825	Number of level 2 events



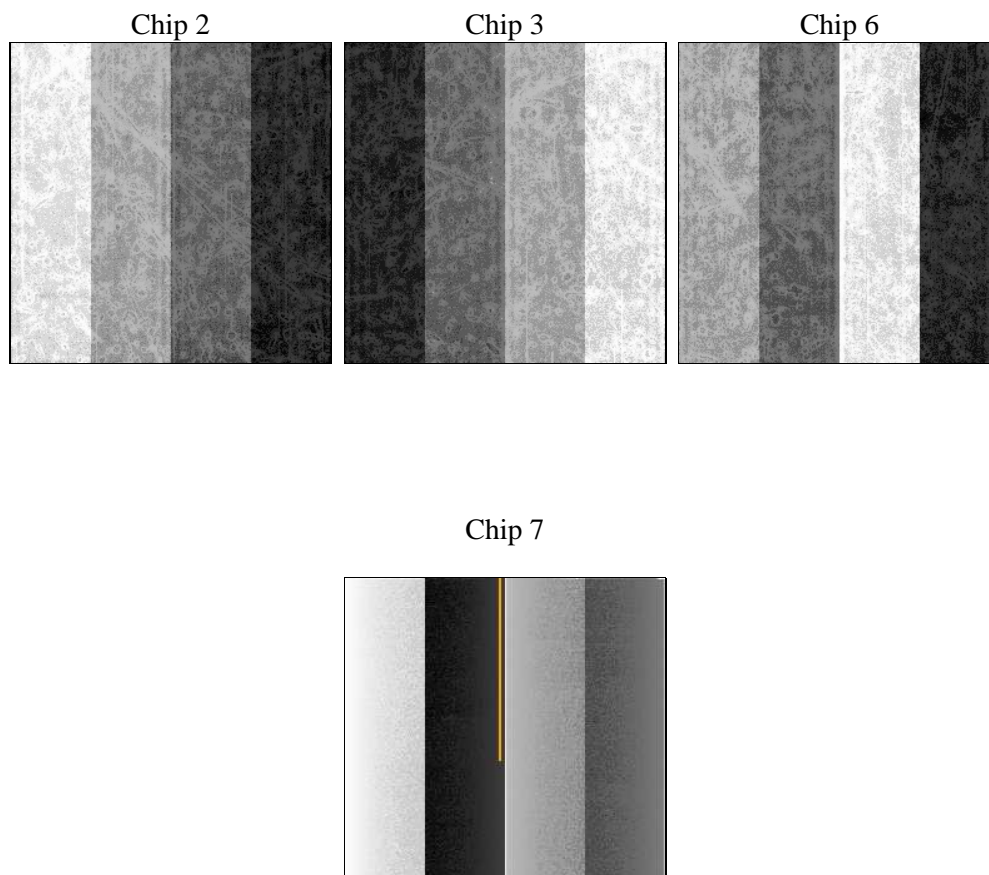
2 OBI

2.1 OBI

2.1.1 Images



2.1.2 Bias



2.1.3 Parameters

obi_num	0	Obi number	sched_exp_time	3000.000000	[s] Scheduled observation exposure time
ascdsver	8.4.4	Processing system revision	ontime	3077.2730703354	Sum of GTIs [s]
caldsver	4.4.9	 	ontime2	3077.1499503255	Sum of GTIs [s]
date	2012-05-23T17:29:28	Date and time of file creation	ontime3	3077.1909903288	Sum of GTIs [s]
revision	2	Processing version of data	ontime6	3077.2320303321	Sum of GTIs [s]
			ontime7	3077.2730703354	Sum of GTIs [s]
			l1events	76900	Number of level 1 events

2.1.4 Events

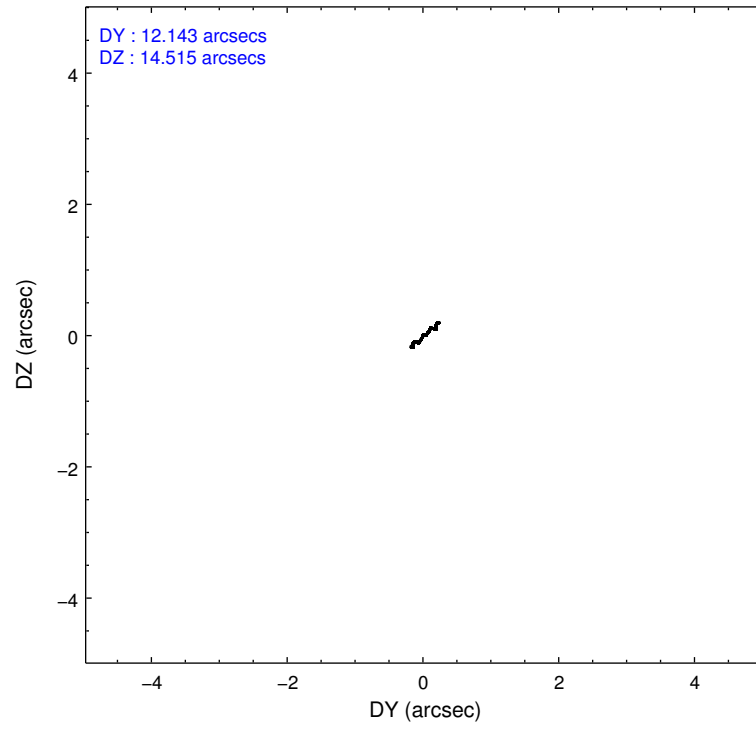
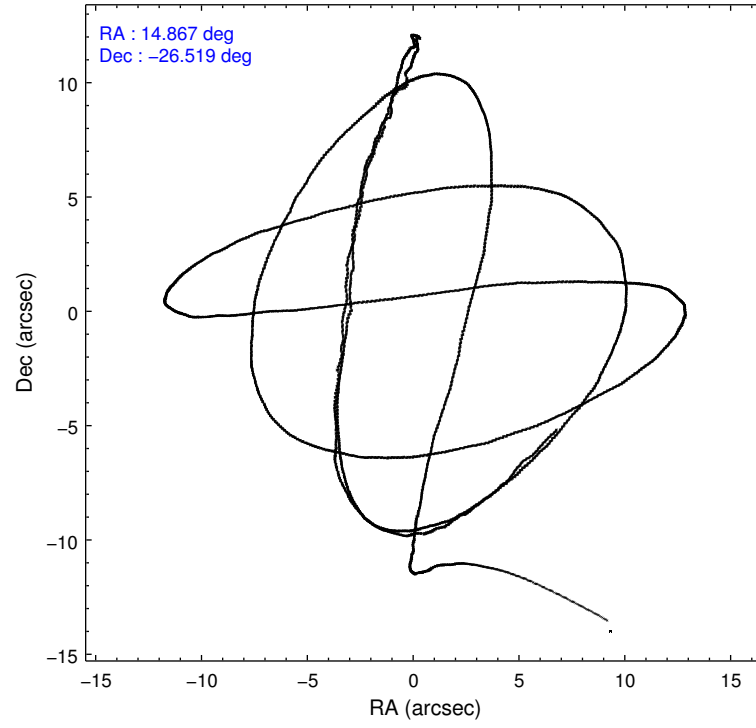
	ccd 2	ccd 3	ccd 6	ccd 7
level 1 events	17899	16878	18029	24094
rejected events	15787	14939	15925	13348
rejected %	88%	88%	88%	55%

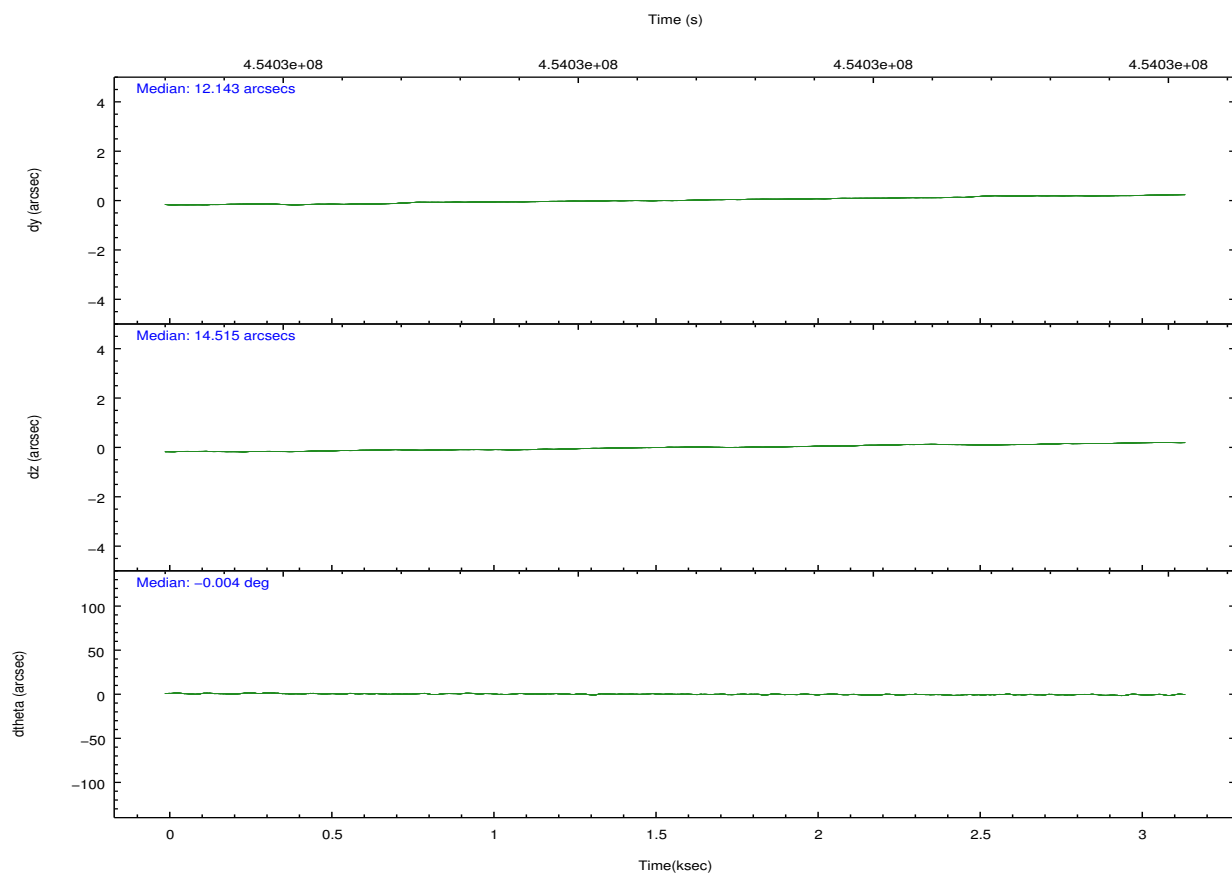
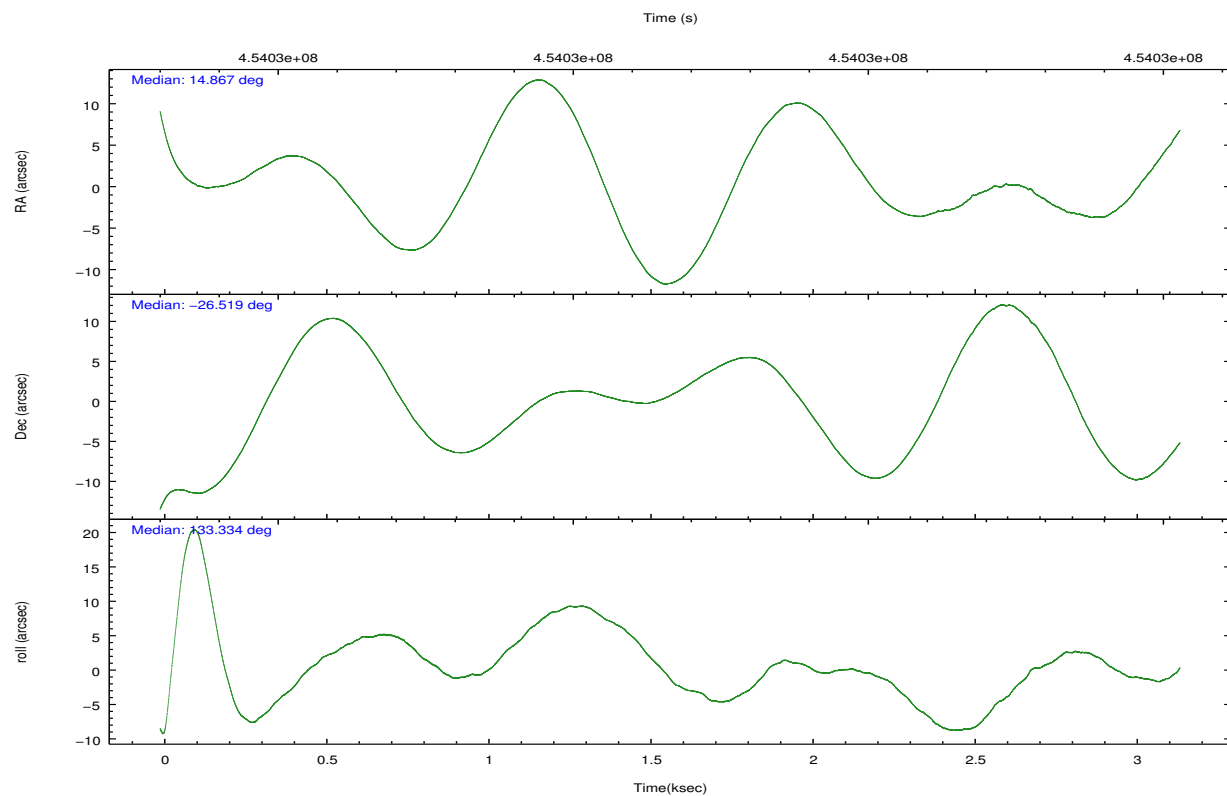
	ccd 2	ccd 3	ccd 6	ccd 7
grade 0 events	768	692	700	951
	4%	4%	3%	3%
grade 1 events	5	11	4	19
	0%	0%	0%	0%
grade 2 events	531	424	469	2174
	2%	2%	2%	9%
grade 3 events	199	231	218	954
	1%	1%	1%	3%
grade 4 events	219	223	209	875
	1%	1%	1%	3%
grade 5 events	853	917	937	2589
	4%	5%	5%	10%
grade 6 events	396	371	511	5813
	2%	2%	2%	24%
grade 7 events	14928	14009	14981	10719
	83%	83%	83%	44%

2.2 Compared Parameters

Parameter	Planned	Actual	Parameter	Planned	Actual
Instrument	ACIS	ACIS	Obspar format version number	7	7
Detector	ACIS-2367	ACIS-2367	Obspar file type	PREDICTED	ACTUAL
Grating	NONE	NONE	Obspar update status	NONE	UPDATED
Data mode	FAINT	FAINT	Number of optional ACIS chips dropped	0	0
Observation mode	POINTING	POINTING	On-chip summing requested	N	N
[deg] Pointing RA	14.896483	14.86702640630426	Subarray requested	NONE	NONE
[deg] Pointing Dec	-26.526108	-26.51880213321333	Alternating exposures requested	N	N
[deg] Pointing Roll	133.187777	133.3310798731569	[s] Primary exposure time	0.000000	3.1
[mm] SIM focus pos	-0.684267	-0.6828225247311905			
[mm] SIM defocus	0	0.001444936568705701			
[mm] SIM translation stage pos	-190.132523	-190.1400660498719			
[mm] SIM translation stage offset	0	0.00754346686406393			
[s] Observation start time (MET)	454029892.184000	454028586.18331			
Observation start date	2012-05-21T23:23:46	2012-05-21T23:03:06			
[s] Observation end time (MET)	454032892.184000	454033848.53359			
Observation end date	2012-05-22T00:13:46	2012-05-22T00:30:48			
Read mode	TIMED	TIMED			

2.3 Aspect



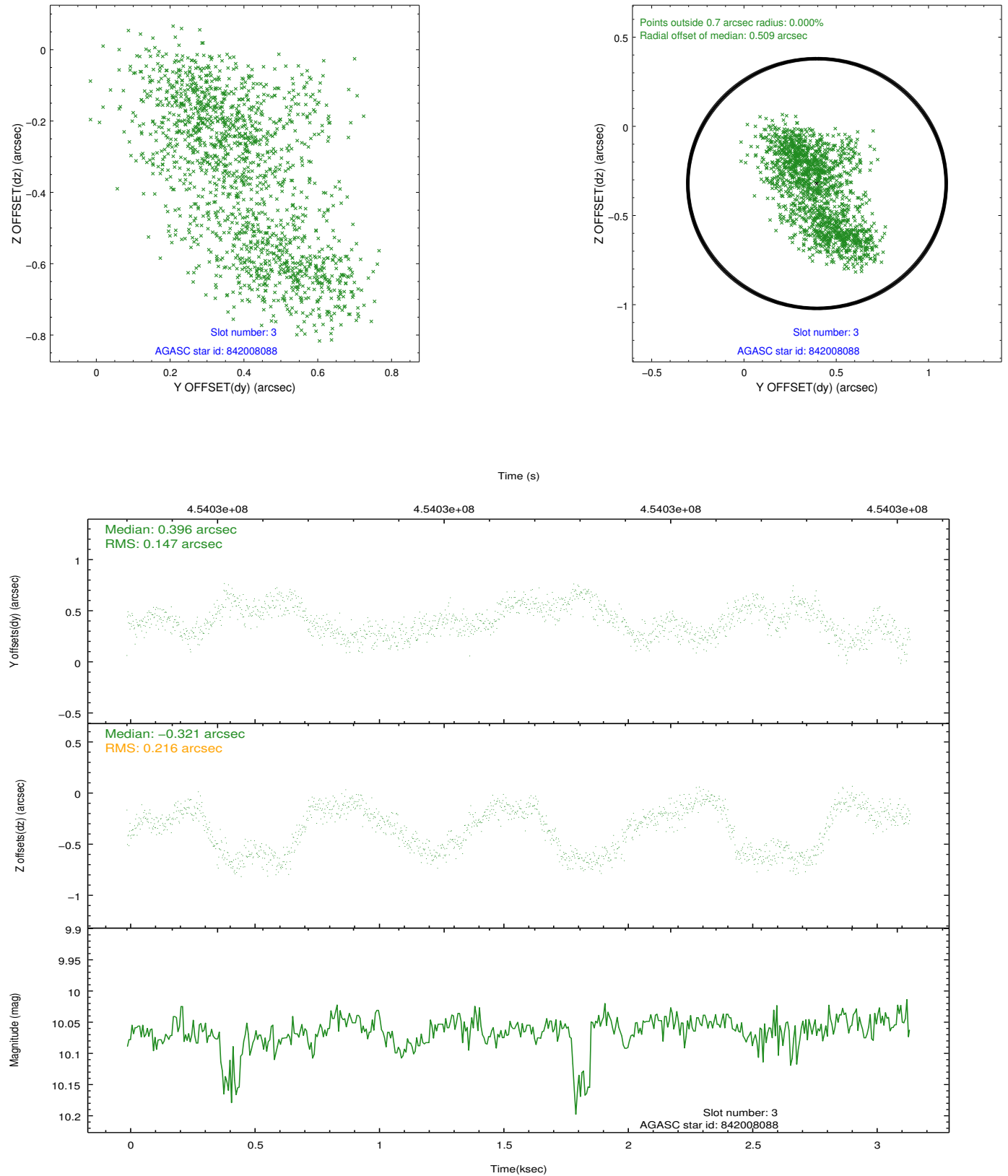


Slot Statistics

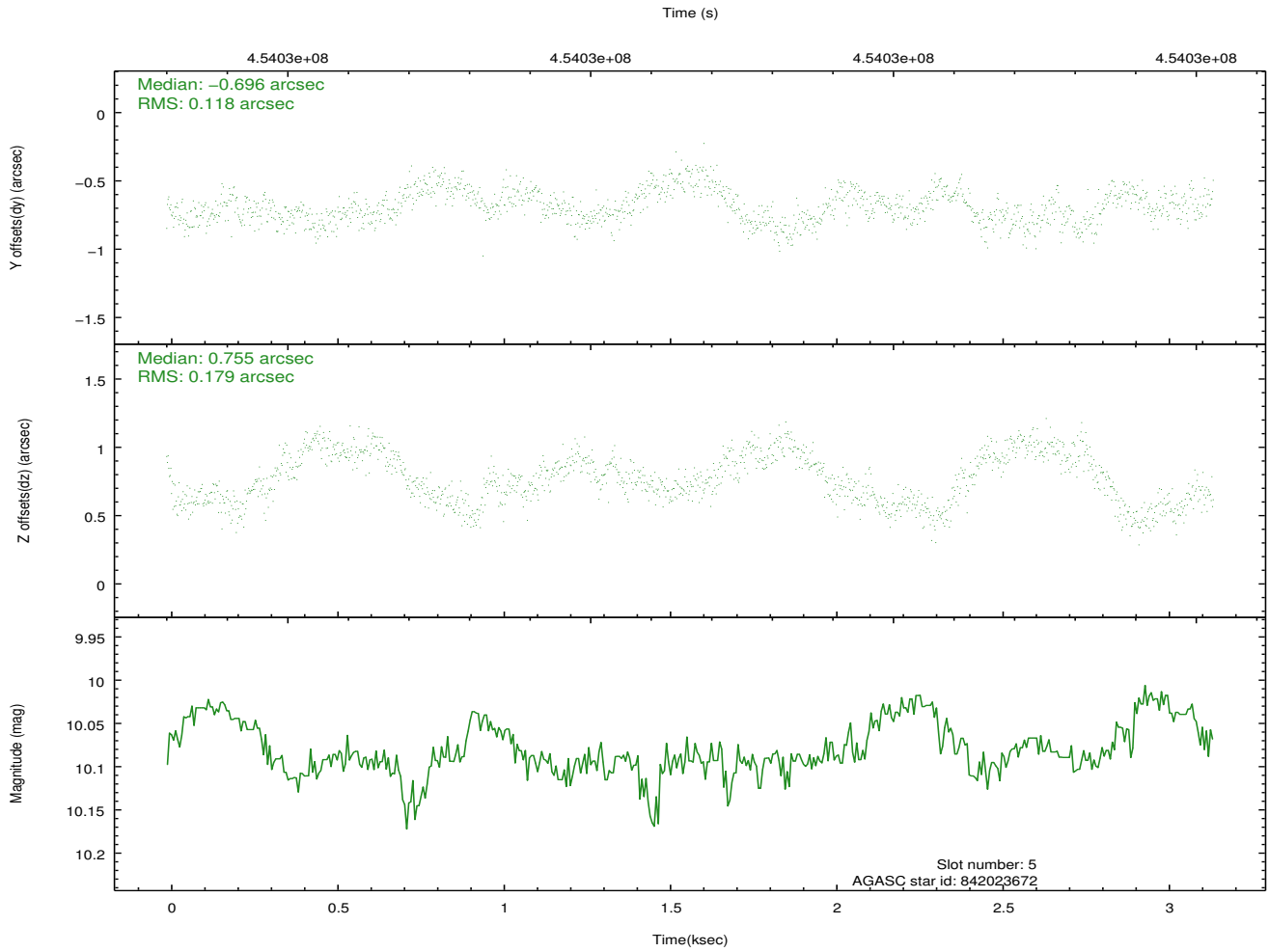
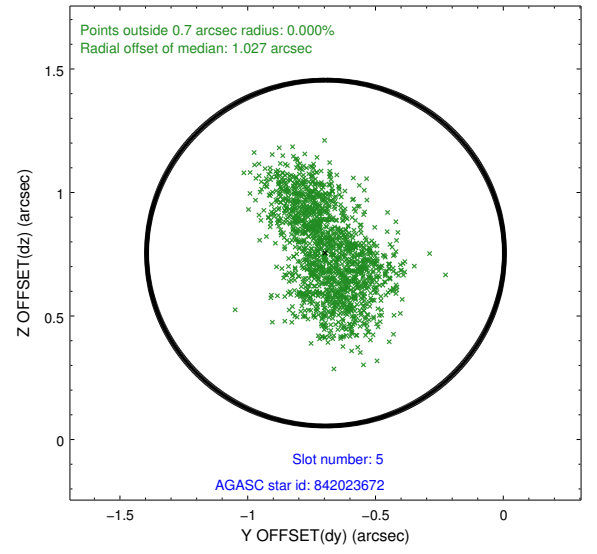
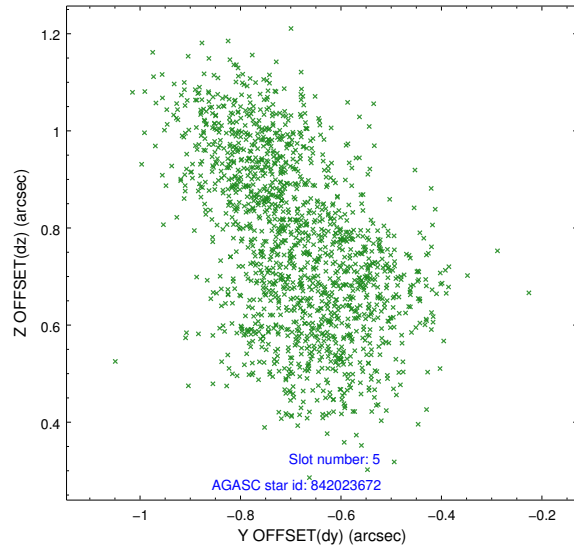
slot	status	id	mag	n_pts	med_dy	med_dz	dr1	dr2	ra	dec	mean_y	mean_z
0	FID	ACIS-S-2	6.90	768	-0.059	-0.031	0.006	0.010	0.000000	0.000000	-765.11	-1735.91
1	FID	ACIS-S-4	6.99	768	0.189	0.037	0.007	0.012	0.000000	0.000000	2147.49	170.55
2	FID	ACIS-S-5	7.02	768	-0.162	0.003	0.007	0.012	0.000000	0.000000	-1815.46	166.48
3	GUIDE	842008088	10.06	1532	0.396	-0.321	0.286	0.434	15.164558	-27.123912	-2157.13	847.63
4	OMITTED		0.00	0	0.000	0.000	0.000	0.000	0.000000	0.000000	0.00	0.00
5	GUIDE	842023672	10.09	1536	-0.696	0.755	0.236	0.354	15.154404	-26.637907	-863.99	-327.69
6	GUIDE	842022320	8.79	1533	-0.171	-0.218	0.099	0.156	14.026788	-26.347023	2382.67	1609.70
7	GUIDE	841749296	9.96	1532	0.465	-0.183	0.178	0.341	14.965206	-25.590760	2304.38	-2465.69

2.4 Star Slots

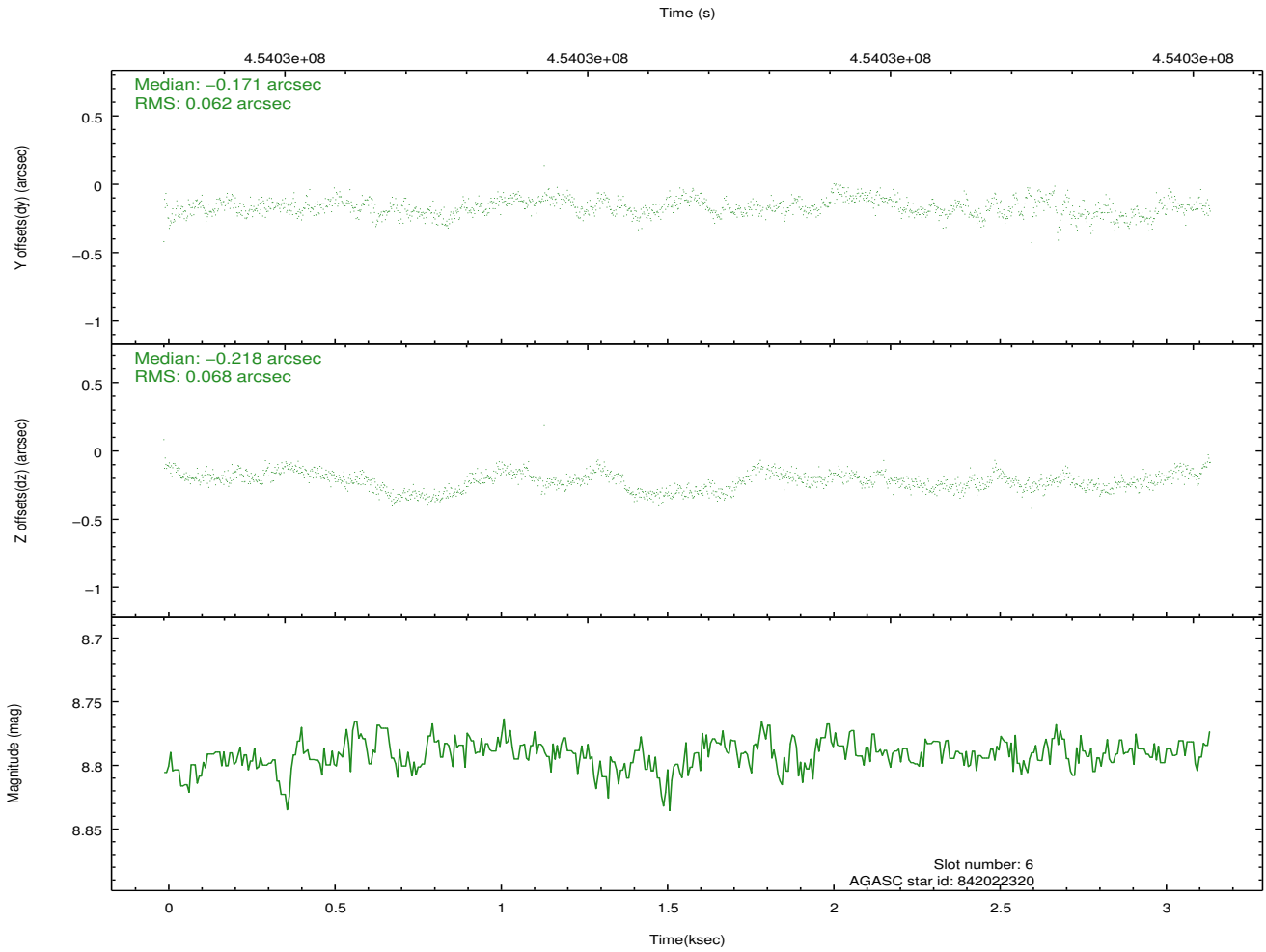
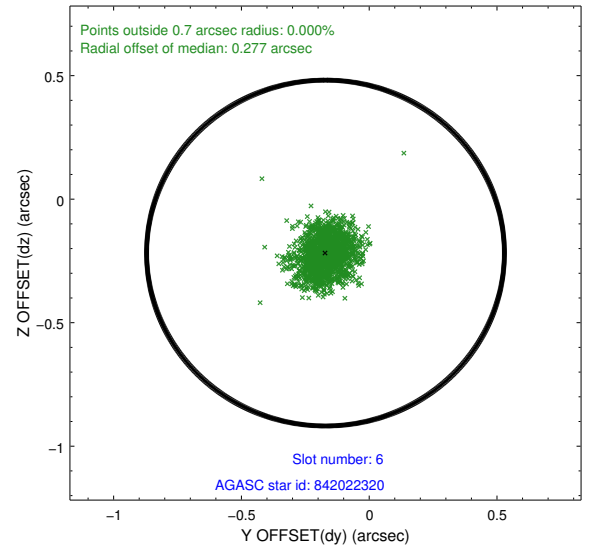
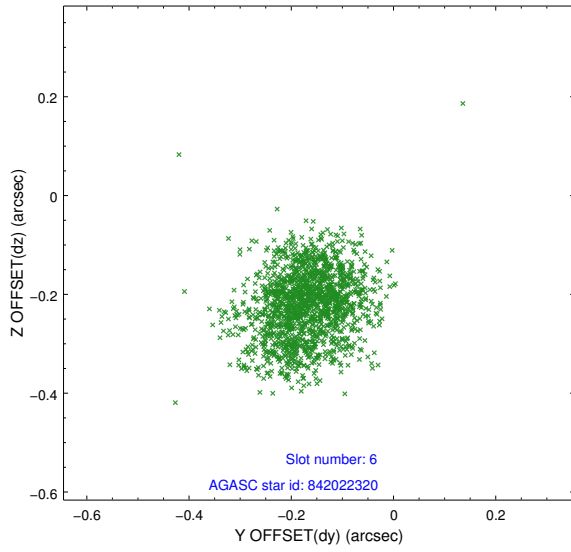
2.4.1 Slot 3



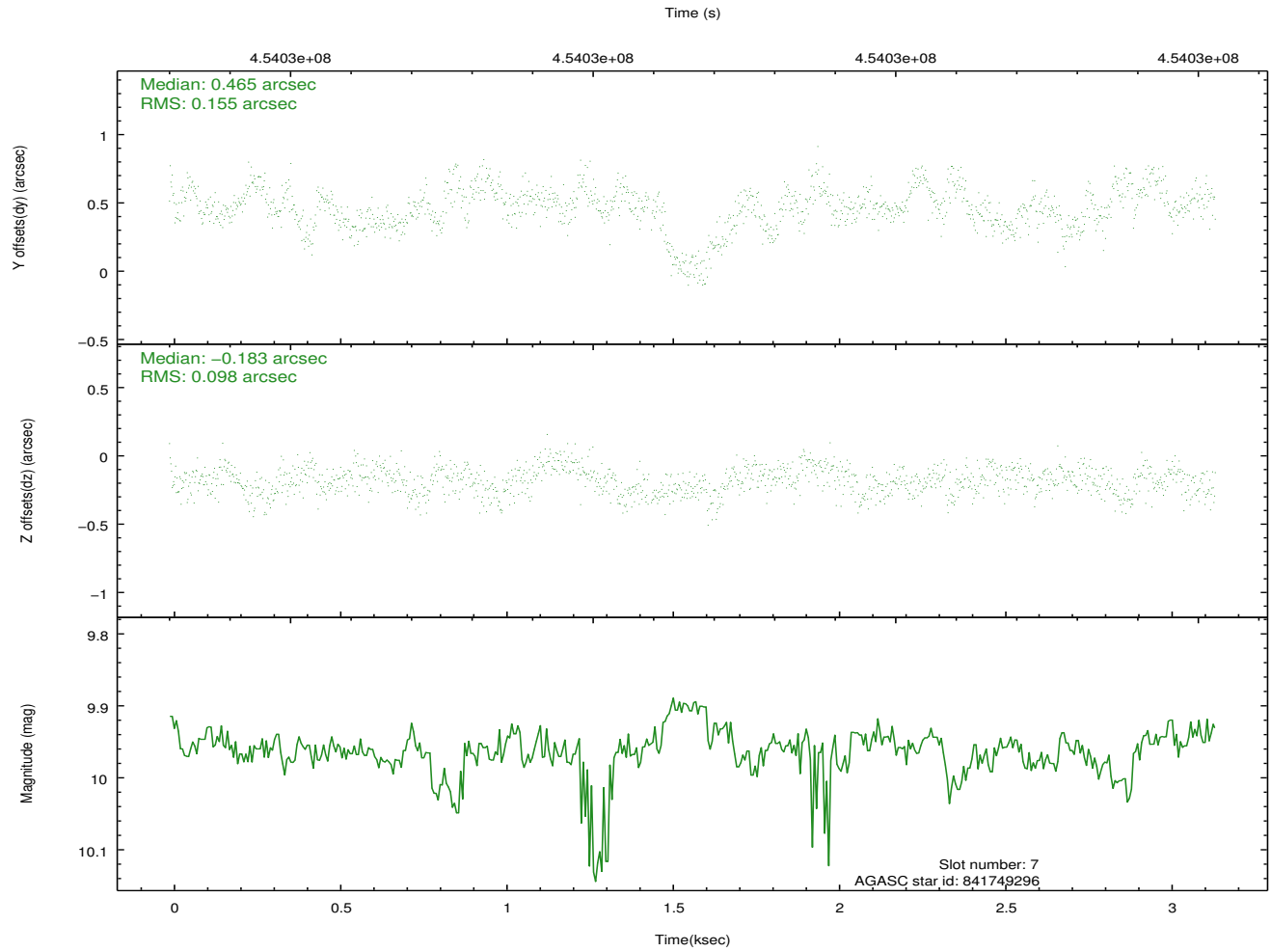
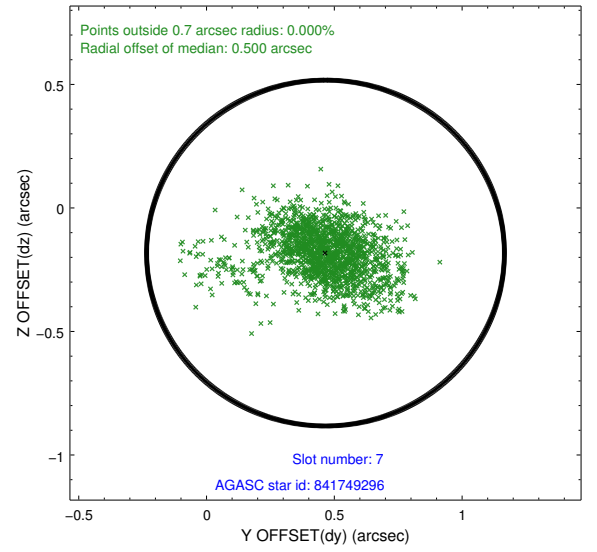
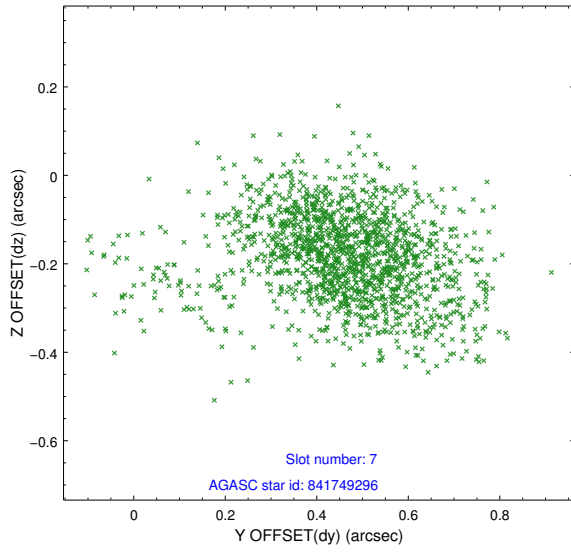
2.4.2 Slot 5



2.4.3 Slot 6

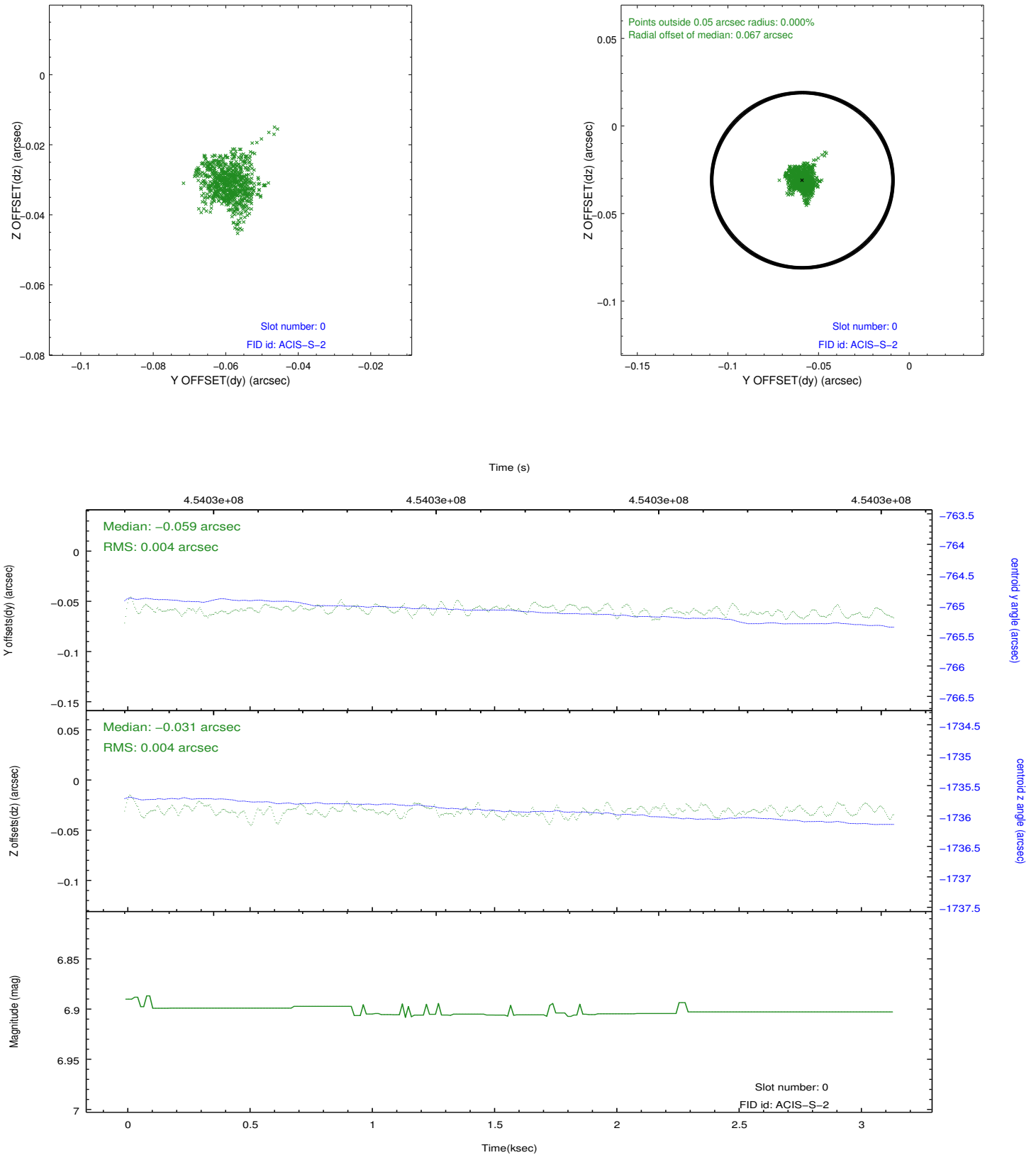


2.4.4 Slot 7

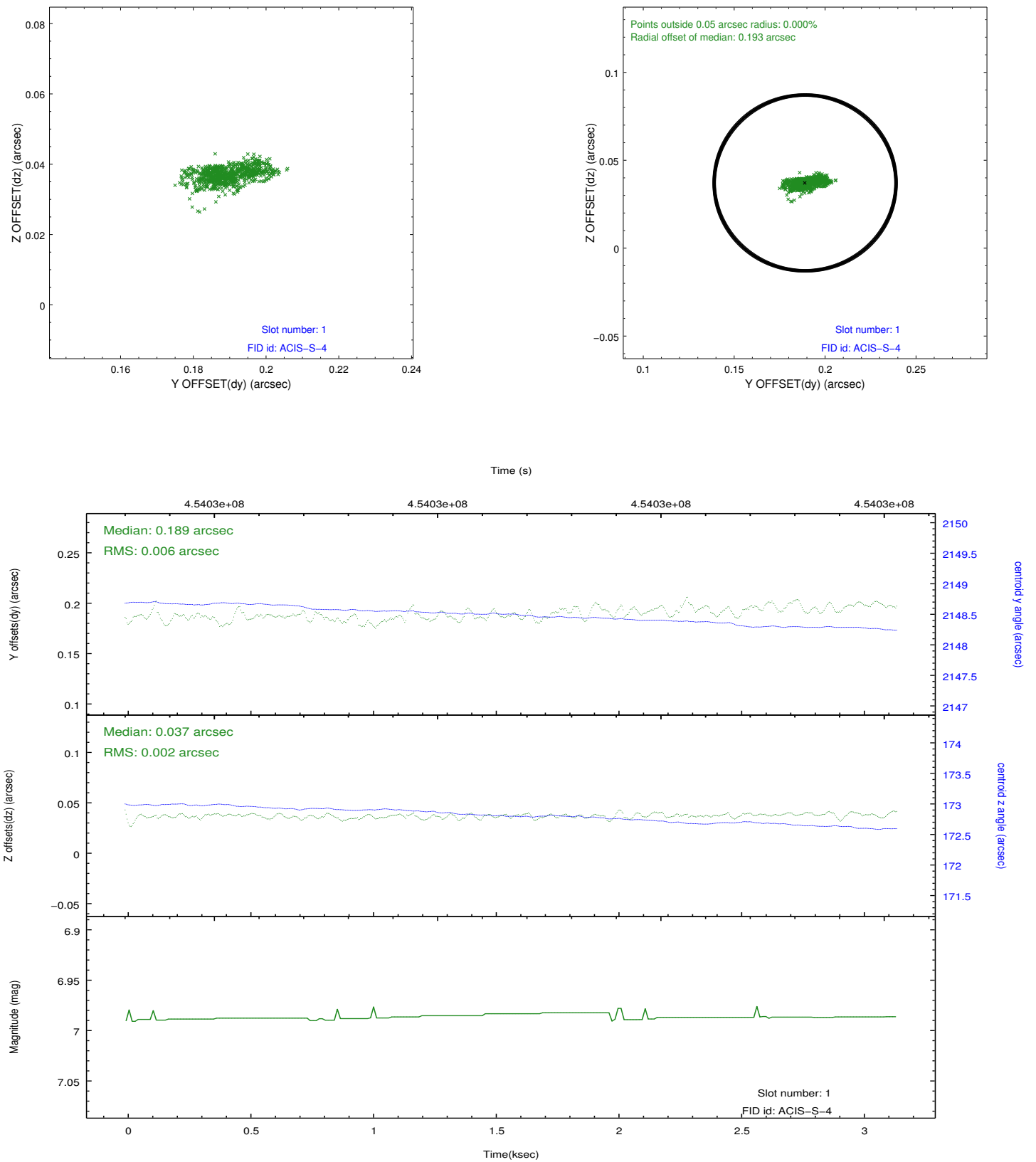


2.5 FID Slots

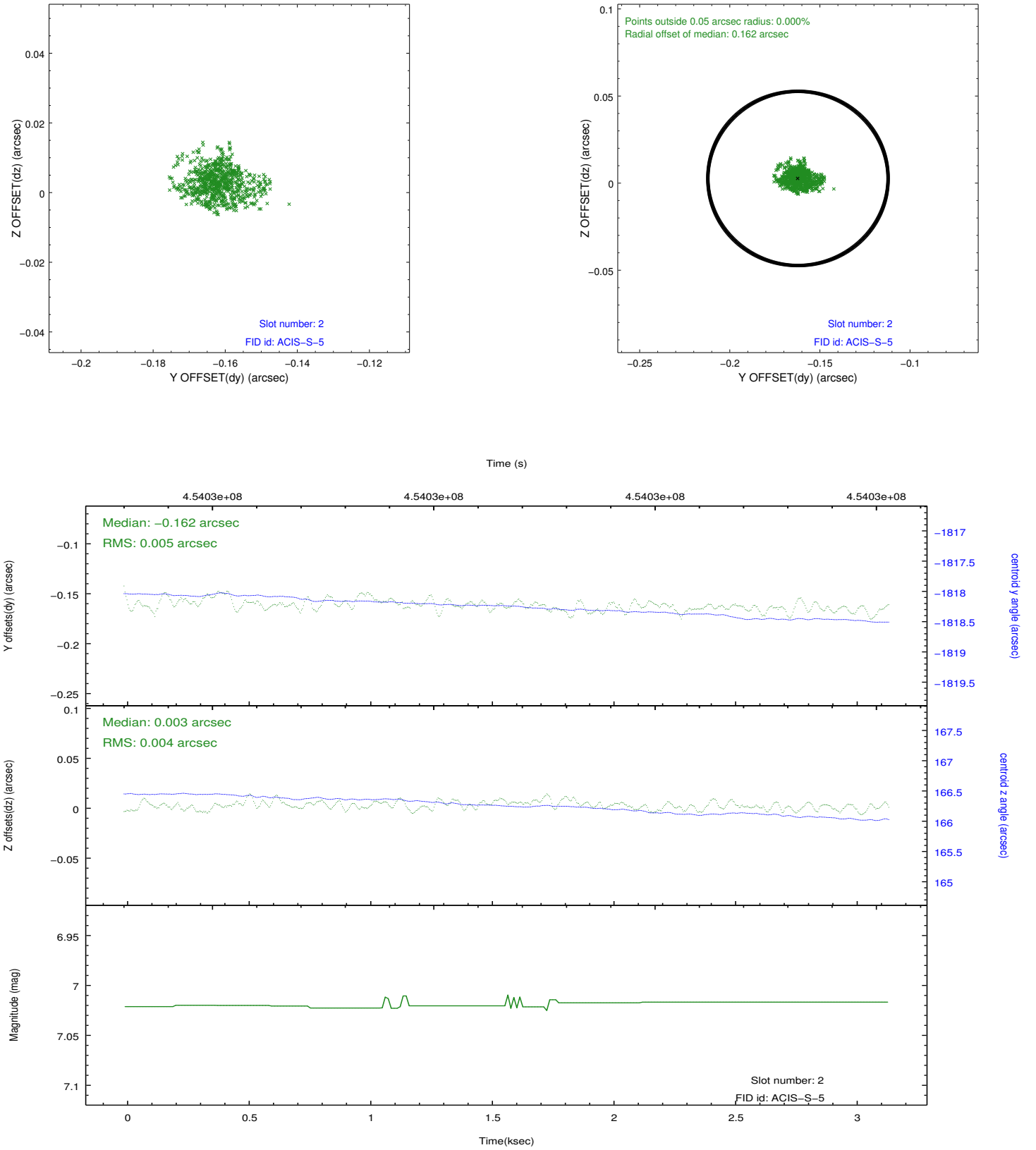
2.5.1 Slot 0



2.5.2 Slot 1



2.5.3 Slot 2



A Summary

A.1 Status

V&V Scientist	Joy Nichols
V&V Date (YYYY-MM-DD)	2012.05.24
V&V Edition	1
V&V Disposition and Status	OK
V&V Charge Time	3.0772730703354

A.2 Comments

The guide star in slot 4 was removed from the aspect solution due to poor data quality. The aspect solution is improved by the removal of this guide star from the solution.