

V&V Reference Report

L2 ASCDS Version : 8.1.2

Observation 1278 - L2 Version 3

Chandra X-Ray Center

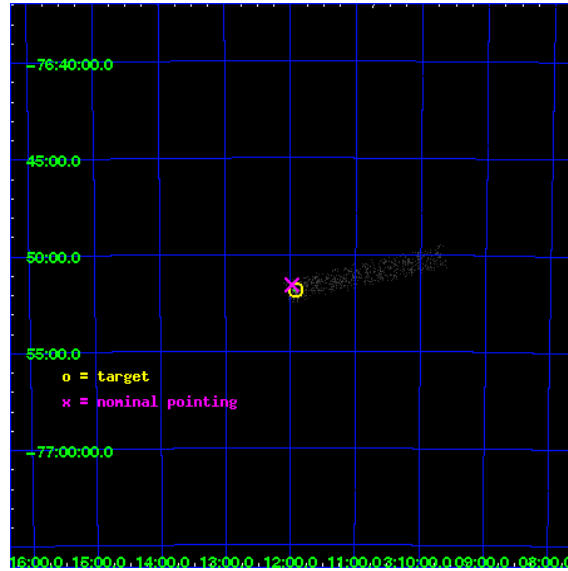
L2 Processing Date : Dec 17 2009

Contents

1	Front	2
2	OBI	3
2.1	OBI	3
2.1.1	Images	3
2.1.2	Bias	3
2.1.3	Parameters	4
2.1.4	Events	4
2.2	Compared Parameters	5
2.3	Aspect	6
2.4	Star Slots	9
2.4.1	Slot 3	9
2.4.2	Slot 5	10
2.4.3	Slot 6	11
2.4.4	Slot 7	12
2.5	FID Slots	13
2.5.1	Slot 0	13
2.5.2	Slot 1	14
2.5.3	Slot 2	15
3	Point Sources	16
A	Summary	17
A.1	Status	17
A.2	Comments	17

1 Front

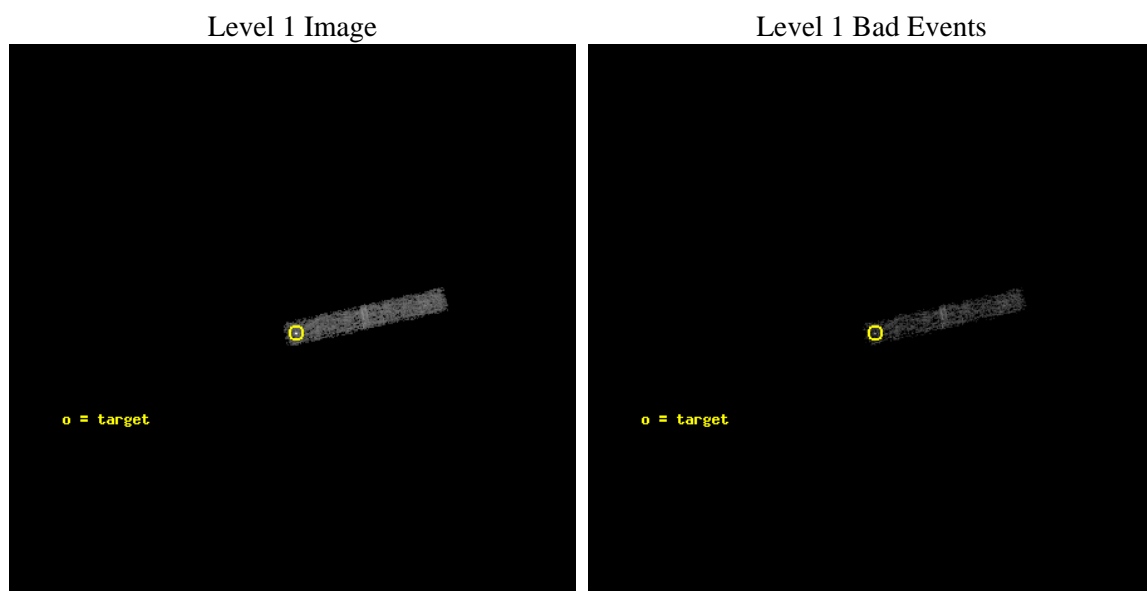
seq_num	780228	Sequence number
obs_id	1278	Observation id
title	Bias observation	Proposal title
observer	Dr. CXC Calibration	Principal investigator
object	PKS0312-770	Source name
dtcycle	0	
cycle	P	events from which exps? Prim/Second/Both
ra_targ	47.98	Observer's specified target RA
dec_targ	-76.864167	Observer's specified target Dec
ra_nom	47.994877247544	Nominal RA
dec_nom	-76.859507374889	Nominal Dec
roll_nom	77.645478410604	Nominal Roll
revision	3	Processing version of data
ontime	4856.8875107467	Sum of GTIs [s]
livetime	4488.4735978363	Livetime [s]
ontime3	4856.8875107467	Sum of GTIs [s]
l2events	3589	Number of level 2 events



2 OBI

2.1 OBI

2.1.1 Images



2.1.2 Bias

Chip 3



2.1.3 Parameters

obi_num	0	Obi number	sched_exp_time	5000.000000	Scheduled observation exposure time
ascdsver	8.1.2	ASCDS version number	ontime	4856.8875107467	Sum of GTIs [s]
caldbver	4.1.4	 	ontime3	4856.8875107467	Sum of GTIs [s]
date	2009-12-17T07:10:34	Date and time of file creation	l1events	13923	Number of level 1 events
revision	3	Processing version of data			

2.1.4 Events

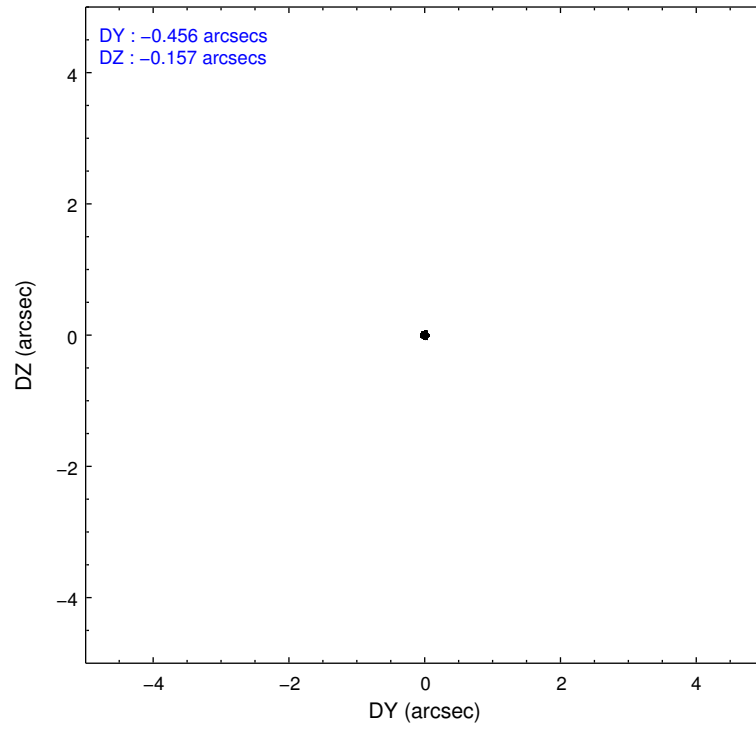
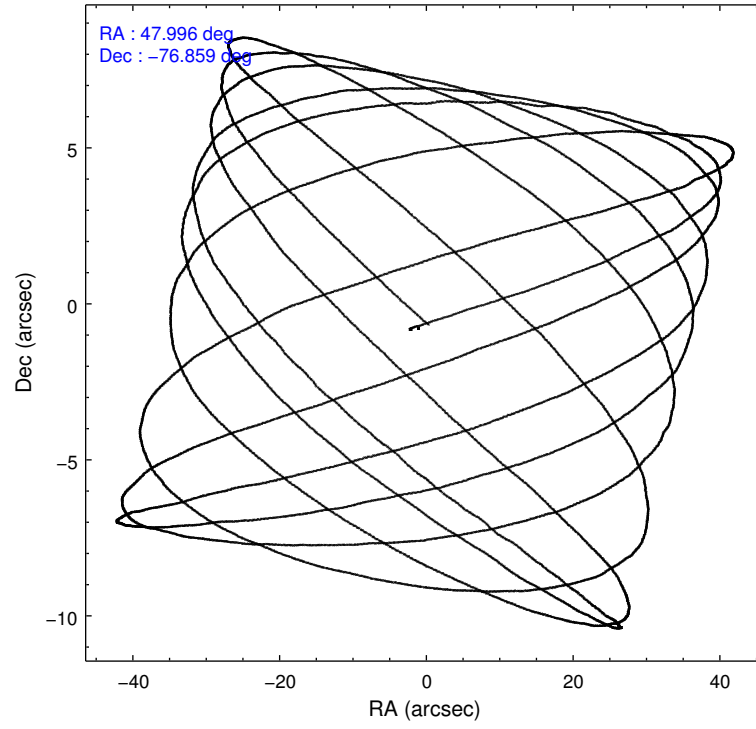
	ccd 3
level 1 events	13923
rejected events	10086
rejected %	72%

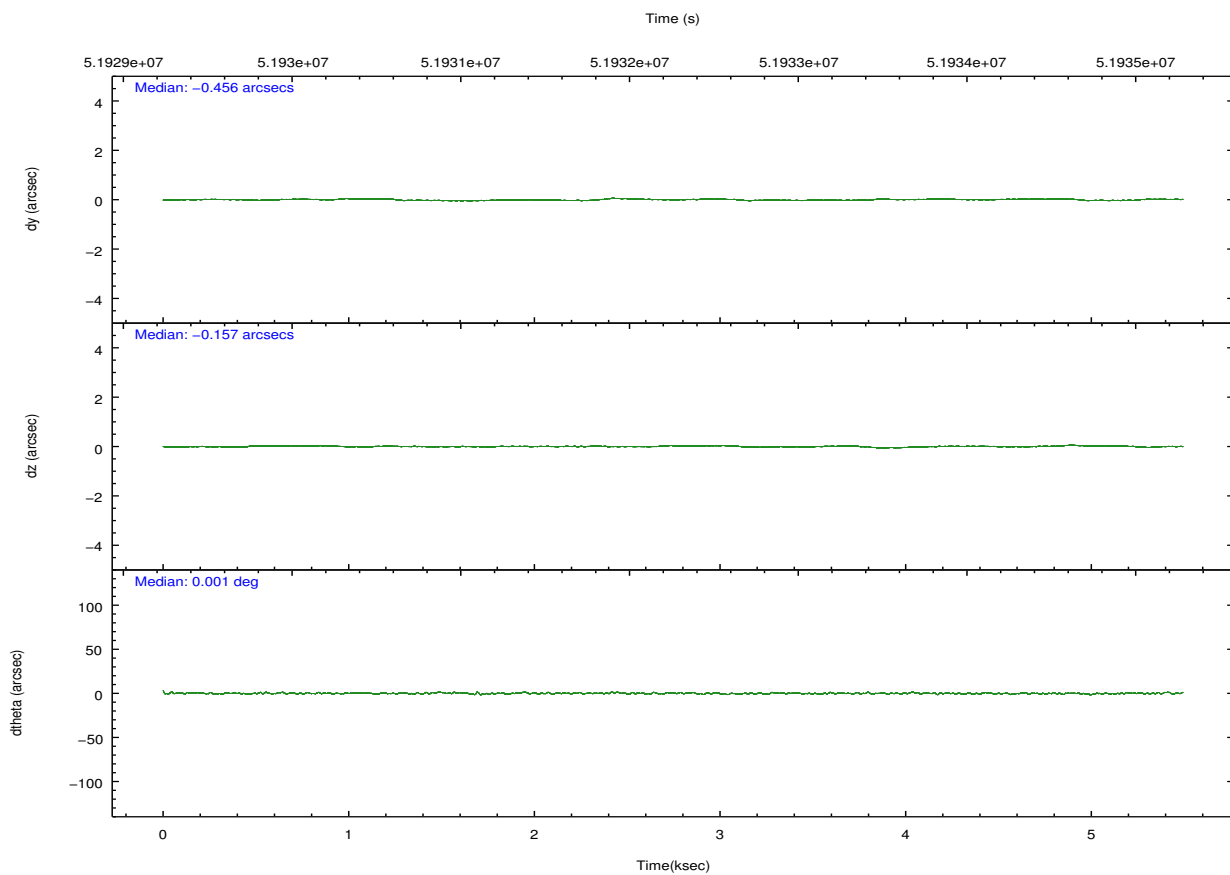
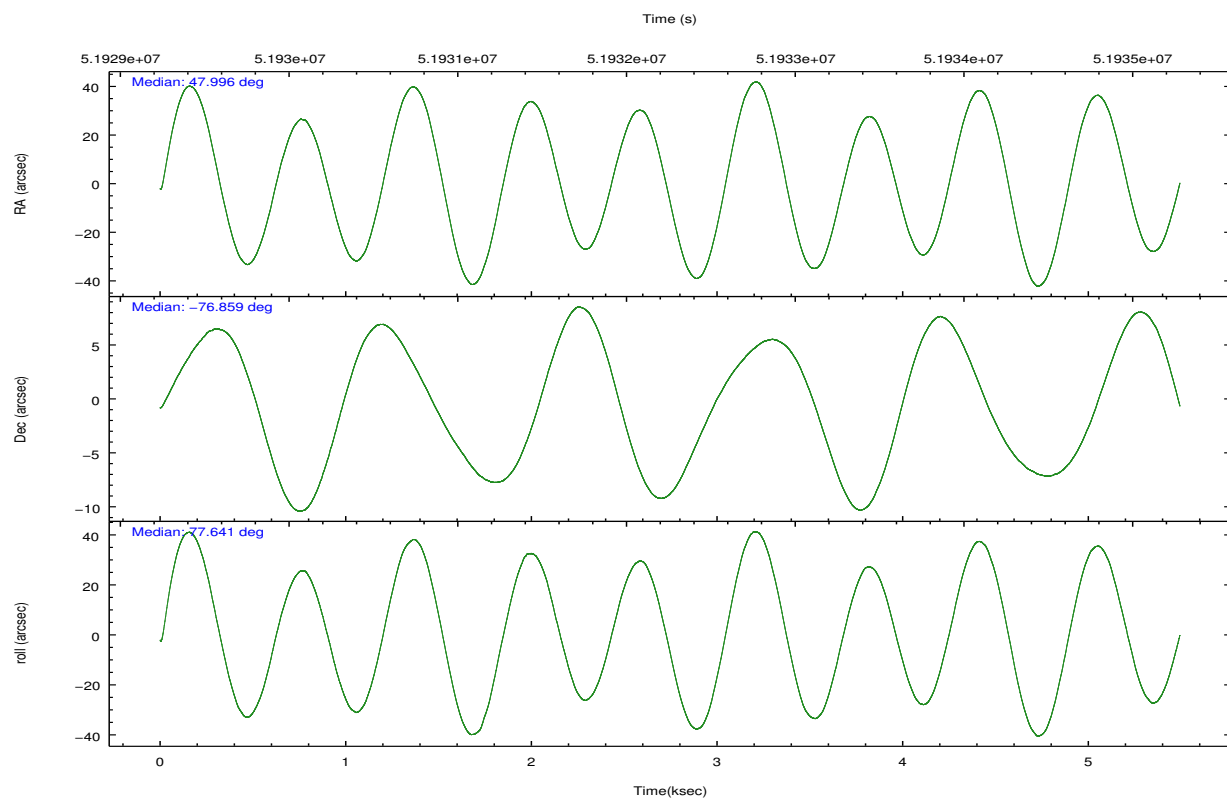
	ccd 3
grade 0 events	2449
	17%
grade 1 events	79
	0%
grade 2 events	567
	4%
grade 3 events	297
	2%
grade 4 events	276
	1%
grade 5 events	183
	1%
grade 6 events	248
	1%
grade 7 events	9824
	70%

2.2 Compared Parameters

Parameter	Planned	Actual	Parameter	Planned	Actual
Instrument	ACIS	ACIS	Obspar format version number	6	6
Detector	ACIS-3	ACIS-3	Obspar file type	PREDICTED	ACTUAL
Grating	NONE	NONE	Obspar update status	NONE	UPDATED
Data mode	FAINT	FAINT	Number of optional ACIS chips dropped	0	0
Observation mode	POINTING	POINTING	On-chip summing requested	N	N
Pointing RA	48.028844	47.99487724754428	Subarray requested	CUSTOM	1/8
Pointing Dec	-76.886466	-76.85950737488869	Subarray start row	896	896
Pointing Roll	77.469864	77.64547841060384	Subarray row count	128	128
SIM focus pos (mm)	-0.782348	-0.7362356599963374	Alternating exposures requested	N	N
SIM defocus (mm)	0	0.04611255558364913	Primary exposure time	0.000000	0.5
SIM translation stage pos (mm)	-233.592463	-233.5874344608287			
SIM translation stage offset (mm)	0	-0.005018542100998502			
Observation start time	51930006.184000	51929332.178192			
Observation start date	1999-08-25T00:59:02	1999-08-25T00:48:52			
Observation end time	51935006.184000	51935132.140901			
Observation end date	1999-08-25T02:22:22	1999-08-25T02:25:32			
Read mode	TIMED	TIMED			

2.3 Aspect



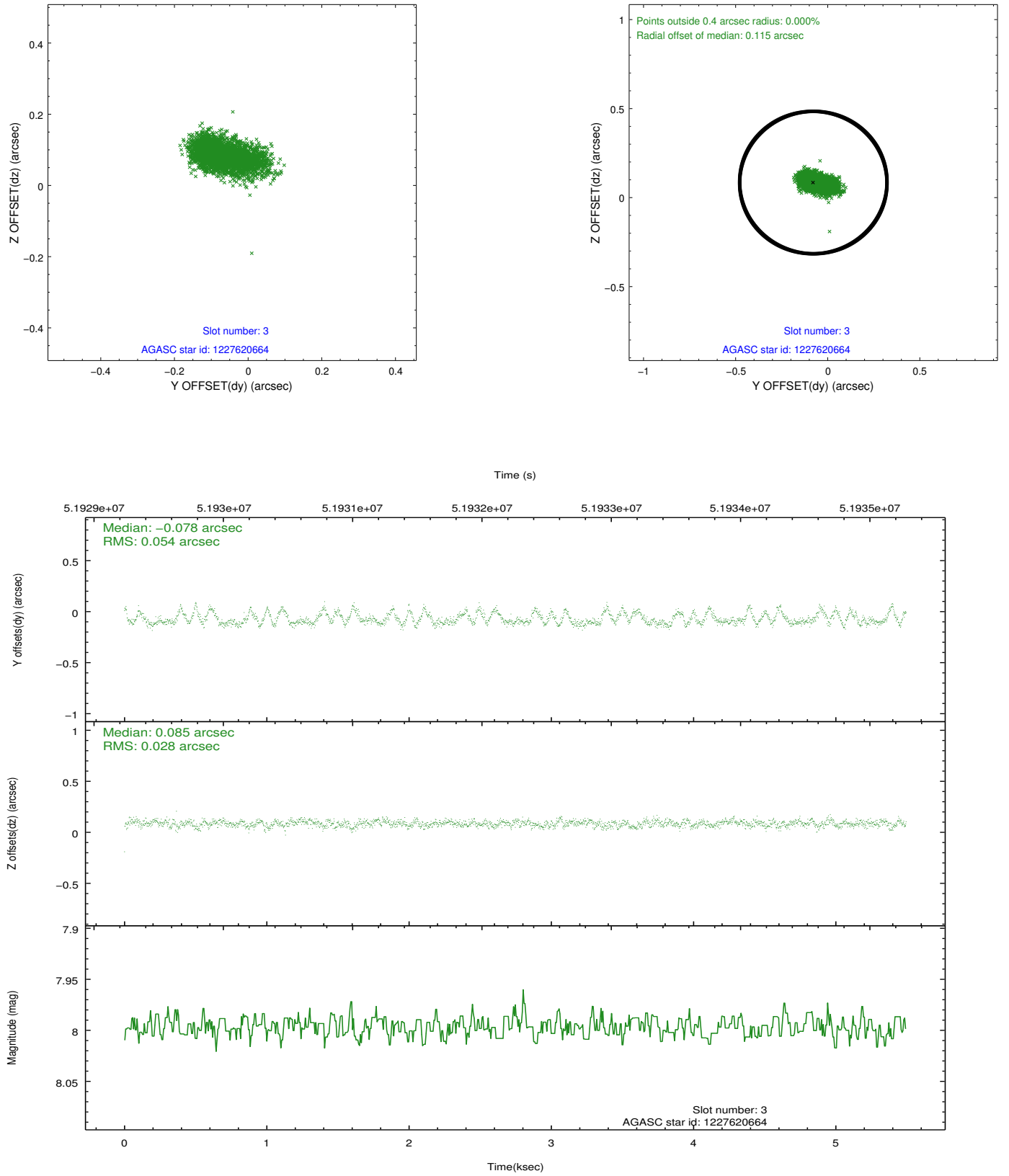


Slot Statistics

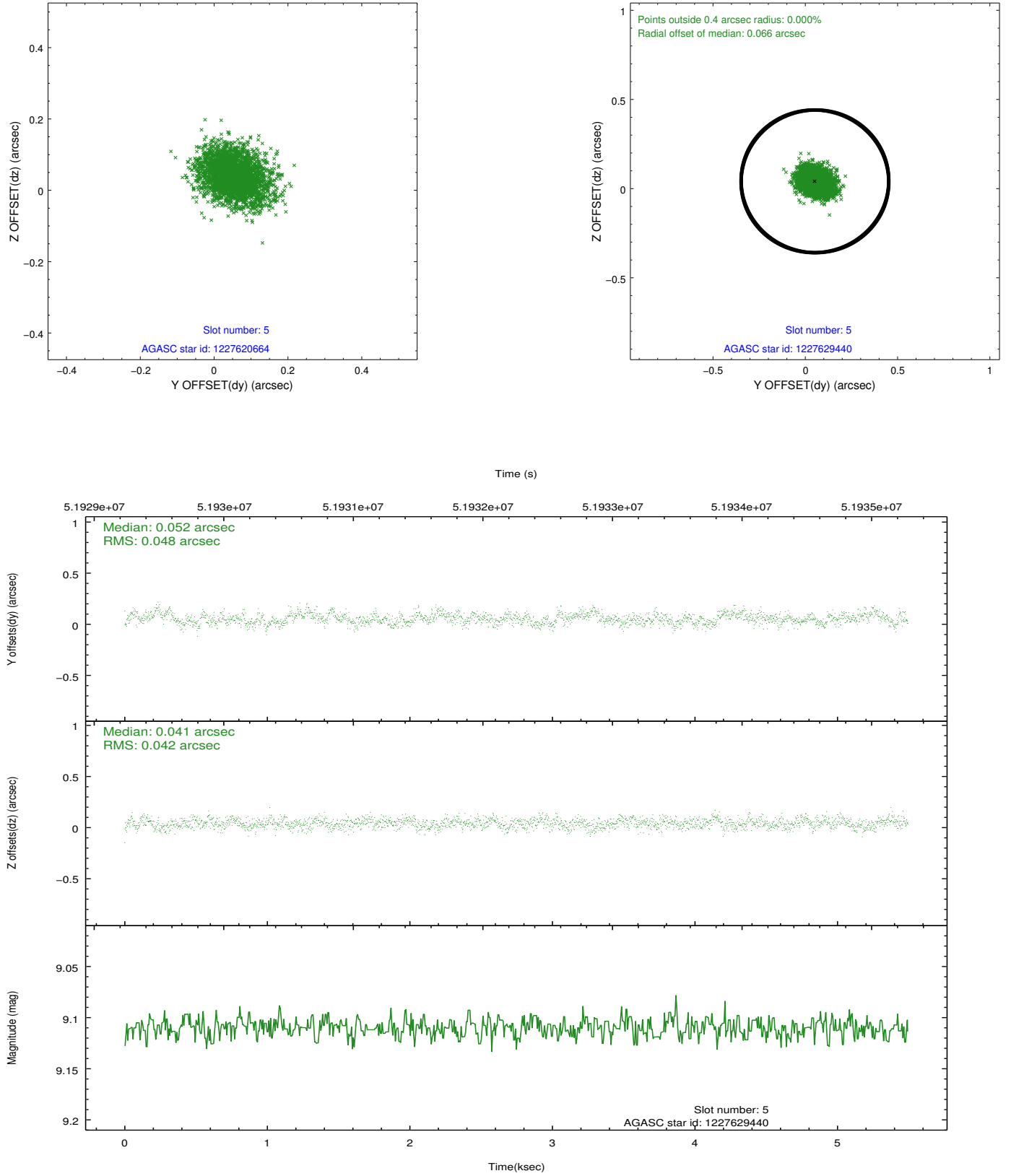
slot	status	id	mag	n_pts	med_dy	med_dz	dr1	dr2	ra	dec	mean_y	mean_z
0	FID	ACIS-I-2	7.21	2680	-0.031	0.057	0.011	0.017	0.000000	0.000000	-753.90	-829.31
1	FID	ACIS-I-4	7.24	2681	0.136	0.011	0.009	0.015	0.000000	0.000000	2160.23	1076.43
2	FID	ACIS-I-5	7.23	2681	-0.206	0.001	0.008	0.014	0.000000	0.000000	-1807.20	1075.02
3	GUIDE	1227620664	8.00	2680	-0.078	0.085	0.061	0.114	46.150563	-77.166043	-1332.58	1243.07
4	UNUSED		0.00	0	0.000	0.000	0.000	0.000	0.000000	0.000000	0.00	0.00
5	GUIDE	1227629440	9.11	2680	0.052	0.041	0.067	0.113	48.268116	-77.028500	-458.71	-298.63
6	GUIDE	1227104240	9.80	2677	0.092	-0.102	0.098	0.157	48.955462	-76.524572	1433.72	-476.89
7	GUIDE	1227098648	9.63	2678	-0.072	-0.026	0.093	0.150	45.933257	-76.269428	1748.55	2223.34

2.4 Star Slots

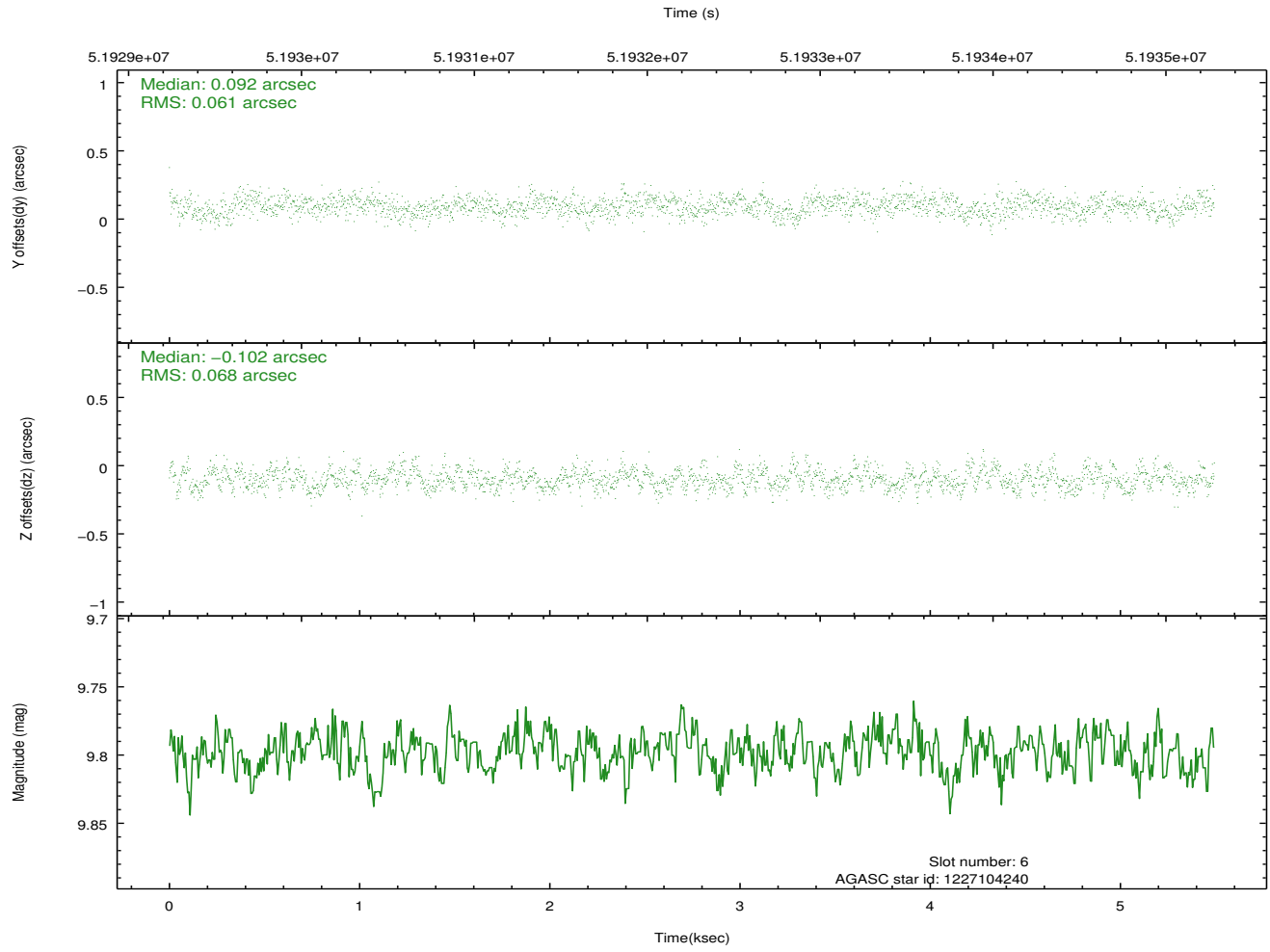
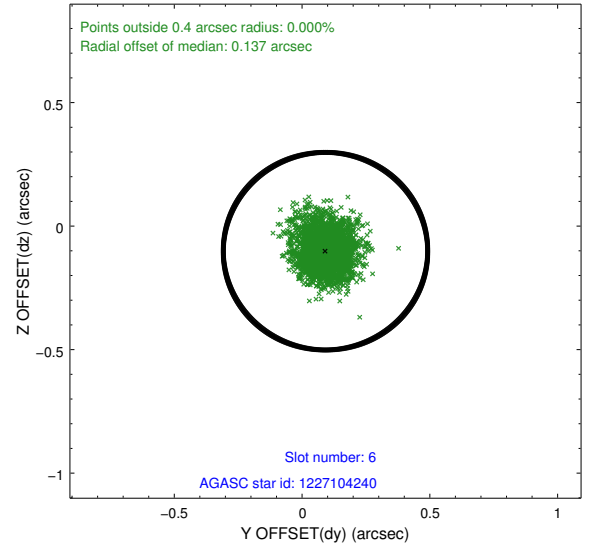
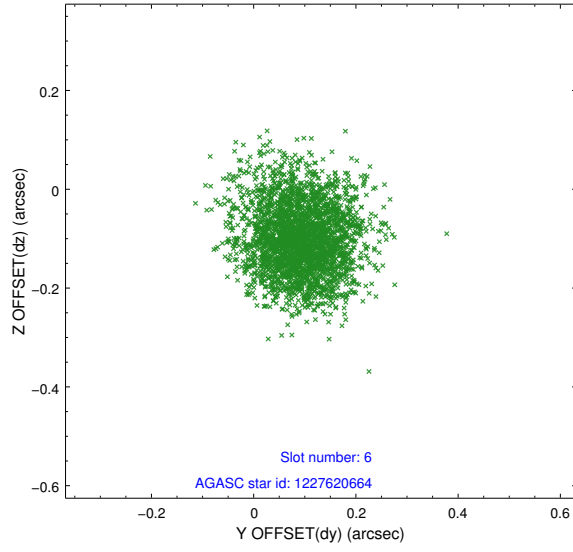
2.4.1 Slot 3



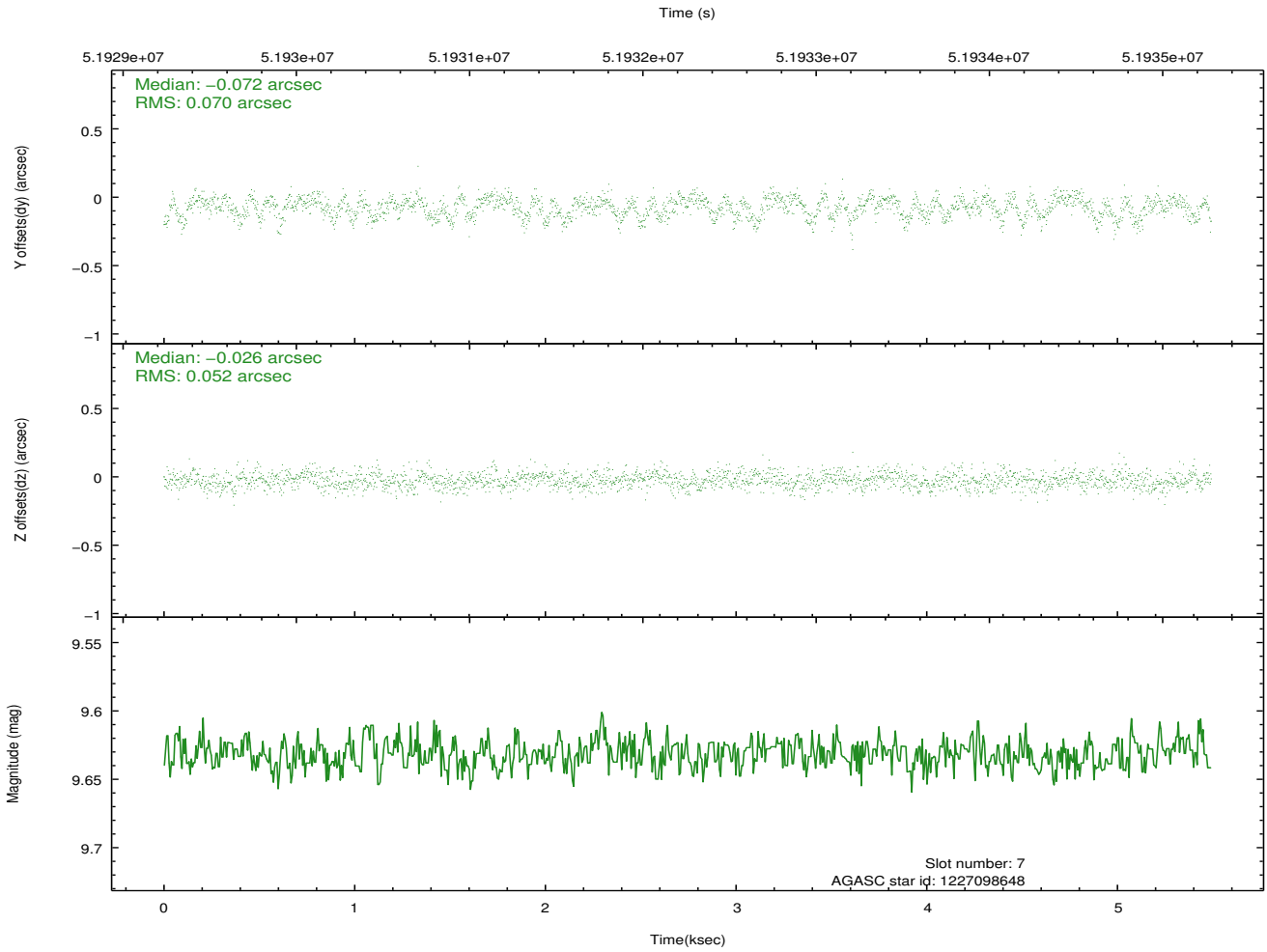
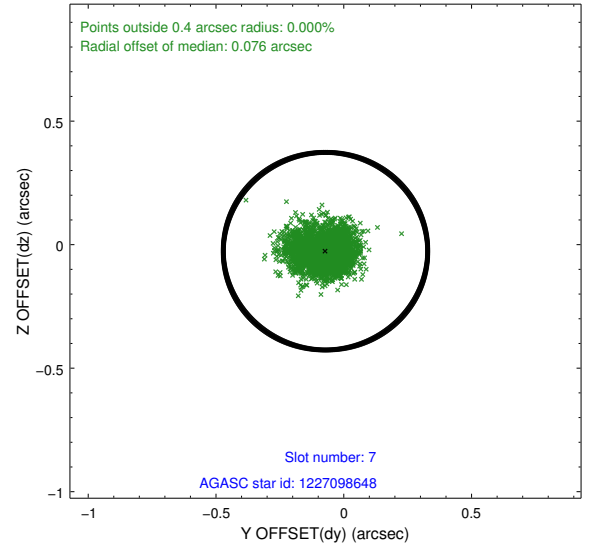
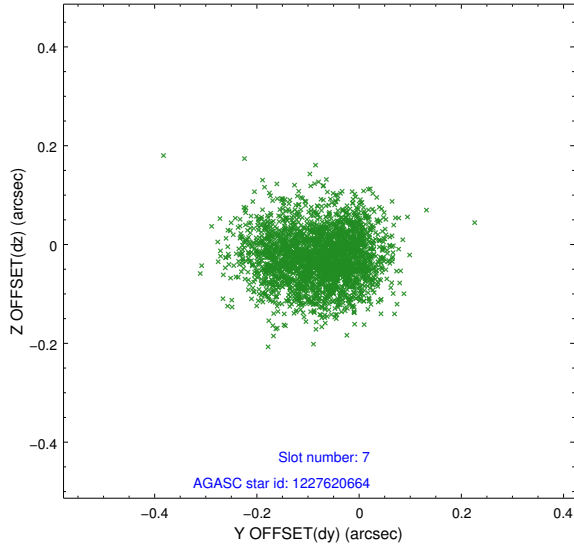
2.4.2 Slot 5



2.4.3 Slot 6

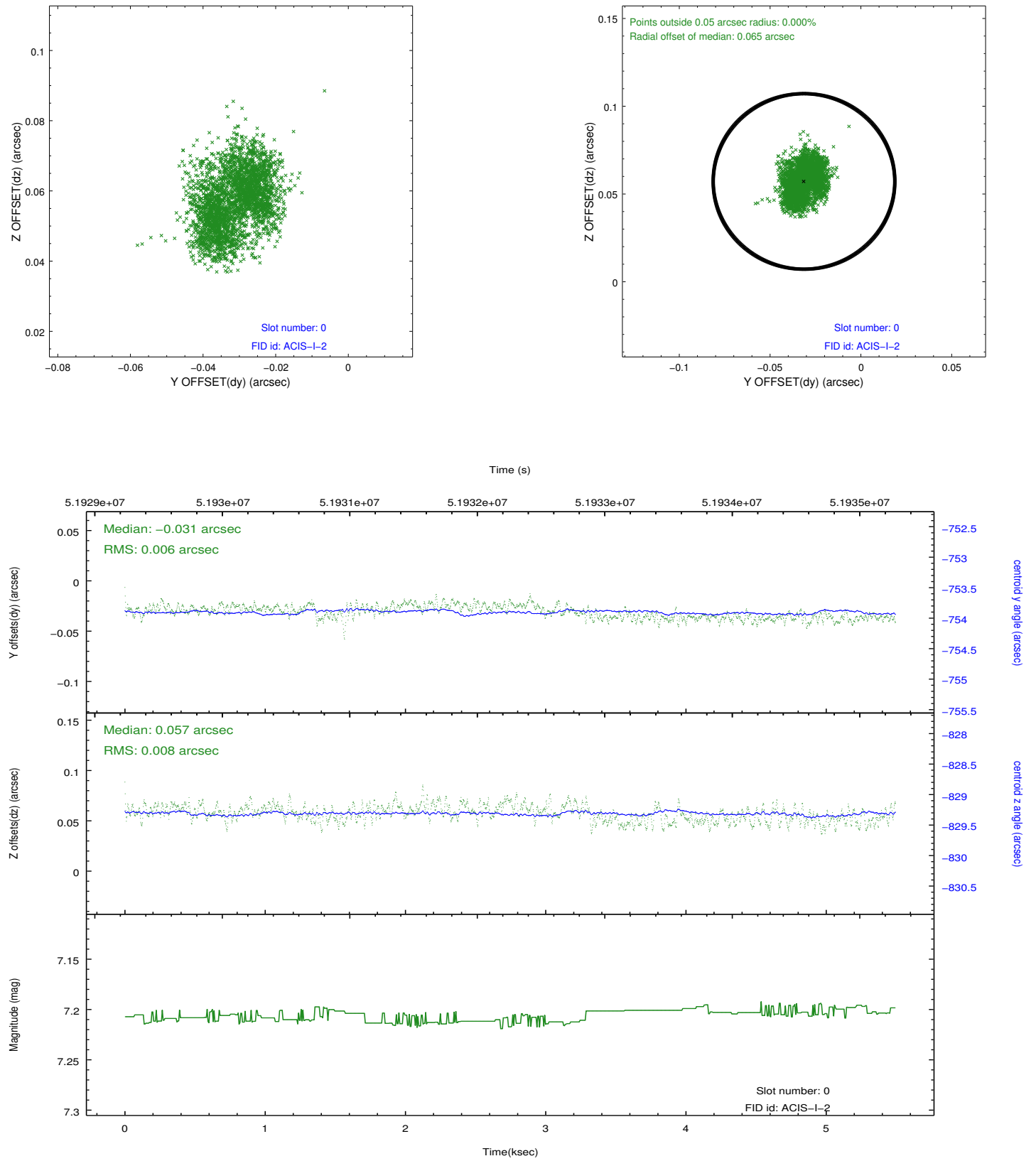


2.4.4 Slot 7

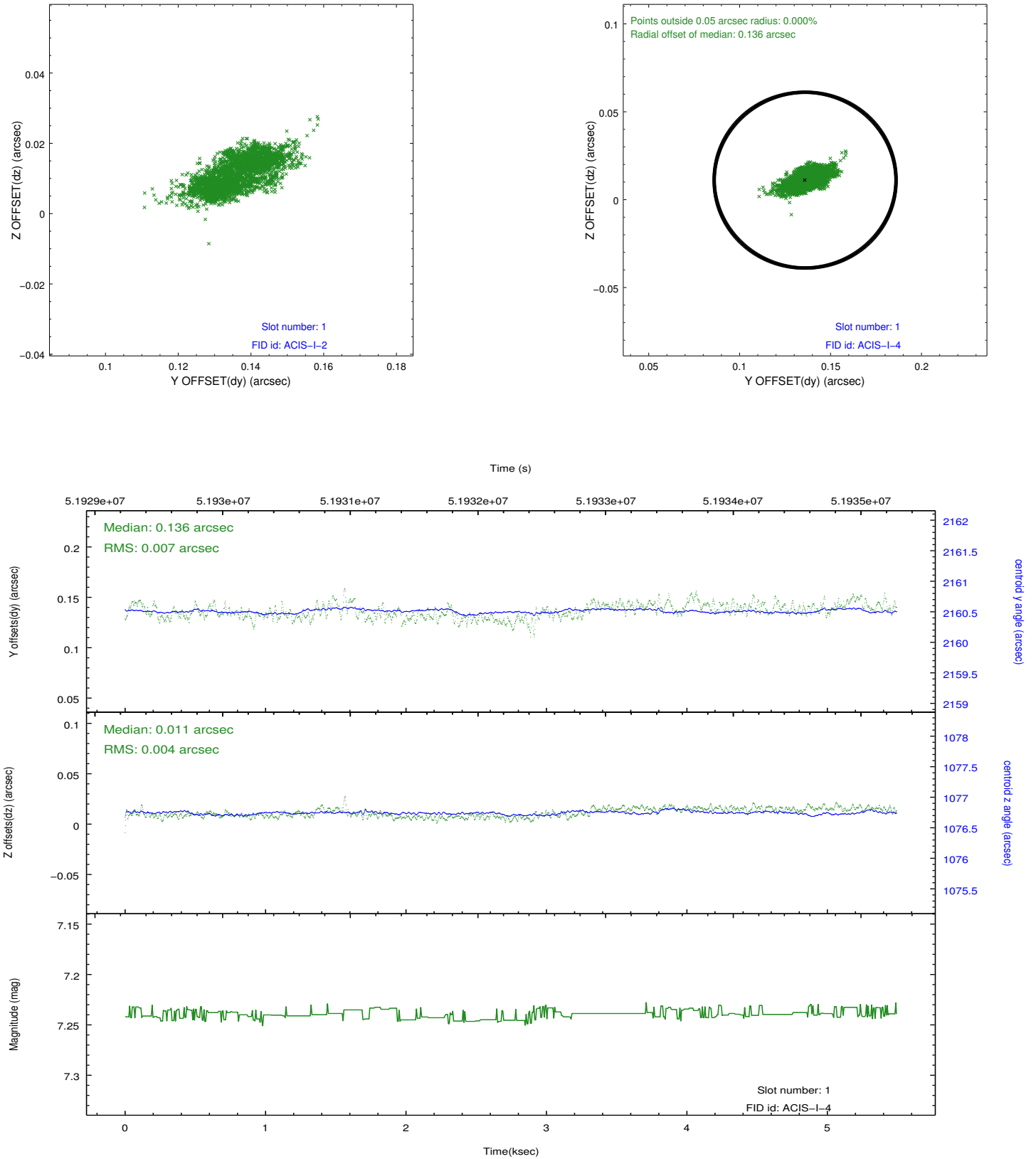


2.5 FID Slots

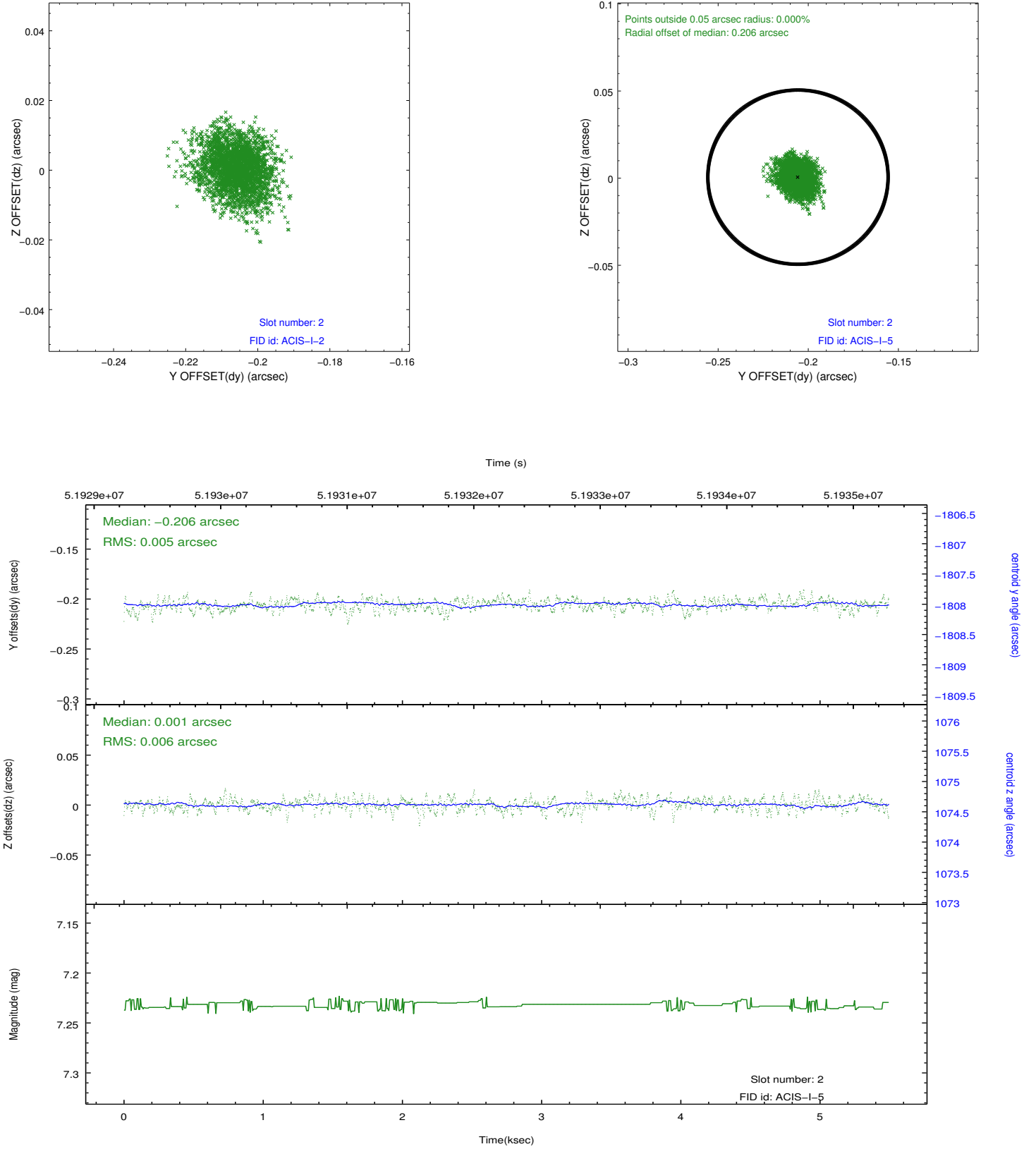
2.5.1 Slot 0



2.5.2 Slot 1



2.5.3 Slot 2



3 Point Sources

A Summary

A.1 Status

V&V Scientist	Joy Nichols
V&V Date (YYYY-MM-DD)	2010.08.12
V&V Edition	1
V&V Disposition and Status	OK
V&V Charge Time	4.857

A.2 Comments

ACIS-I focus plate.

===

Slot 4 was not utilized in this observation.

==

The focal plane temperature is approximately -100 C during this observation. This reprocessing of the data applies no CTI correction because none is available for this temperature at present.

The ACIS CTI correction has not been calibrated at this temperature, because it was early in the mission, and ACIS had not yet been lowered to the standard -119.7 C. Both front and back illuminated chips are affected. However a T_GAIN correction has been applied to the BI chips (ACIS-5 and ACIS-7) data included here.

The ACIS spectral response calibration is less accurate at these warmer temperatures than it is at -119.7 C. Users whose science objectives depend on the most accurate spectral response (ie: fitting line-rich spectra) may notice an effect. Users whose science objectives do not depend on the most accurate spectral response should not notice an effect.