

V&V Reference Report

L2 ASCDS Version : 8.4.3

Observation 12538 - L2 Version 2
Chandra X-Ray Center

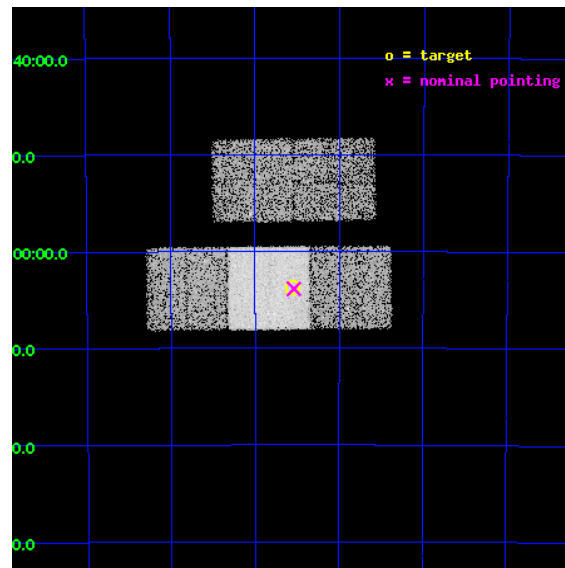
L2 Processing Date : Feb 22 2012

Contents

1	Front	2
2	OBI	3
2.1	OBI	3
2.1.1	Images	3
2.1.2	Bias	3
2.1.3	Parameters	4
2.1.4	Events	4
2.2	Compared Parameters	5
2.3	Aspect	6
2.4	Star Slots	9
2.4.1	Slot 3	9
2.4.2	Slot 4	10
2.4.3	Slot 5	11
2.4.4	Slot 6	12
2.4.5	Slot 7	13
2.5	FID Slots	14
2.5.1	Slot 0	14
2.5.2	Slot 1	15
2.5.3	Slot 2	16
A	Summary	17
A.1	Status	17
A.2	Comments	17

1 Front

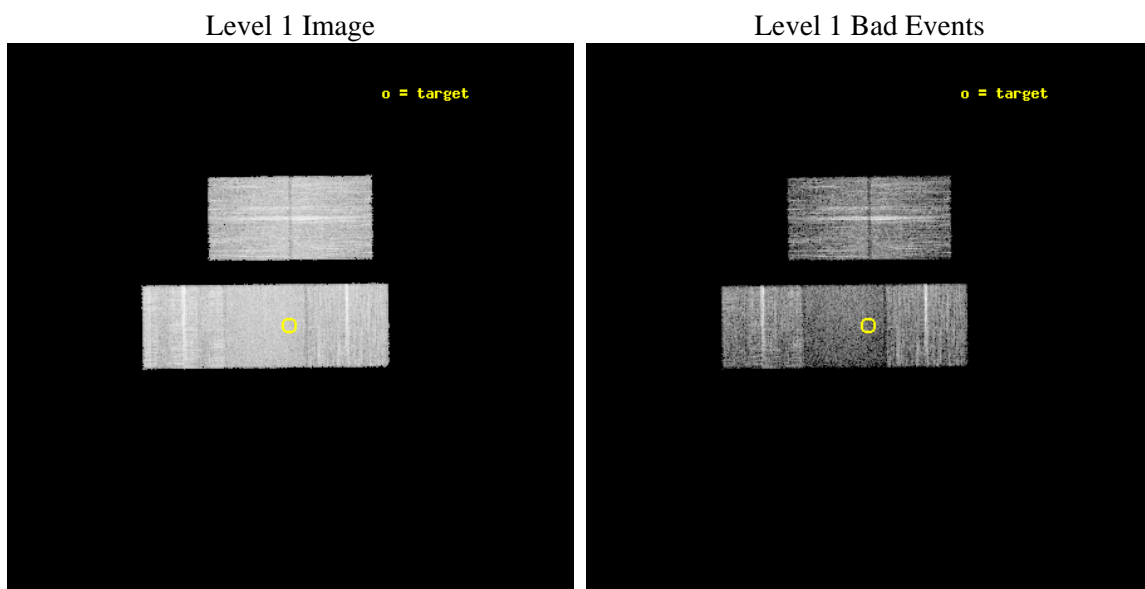
seq_num	401279	Sequence number
obs_id	12538	Observation id
title	Searching New Millisecond Pulsar Fields for X-ray Counterparts	Pro
observer	Dr. Michael Wolff	Principal investigator
object	PSRJ1103-53	Source name
dtcycle	0	
cycle	P	events from which exps? Prim/Second/Both
ra_targ	165.8875	Observer's specified target RA [deg]
dec_targ	-54.061944	Observer's specified target Dec [deg]
ra_nom	165.88465243688	Nominal RA [deg]
dec_nom	-54.064527896414	Nominal Dec [deg]
roll_nom	179.37798876995	Nominal Roll [deg]
revision	2	Processing version of data
ontime	10037.8000772	Sum of GTIs [s]
livetime	9906.6488294704	Livetime [s]
ontime2	10037.8000772	Sum of GTIs [s]
ontime3	10037.8000772	Sum of GTIs [s]
ontime6	10037.8000772	Sum of GTIs [s]
ontime7	10037.8000772	Sum of GTIs [s]
ontime8	10037.8000772	Sum of GTIs [s]
l2events	57536	Number of level 2 events



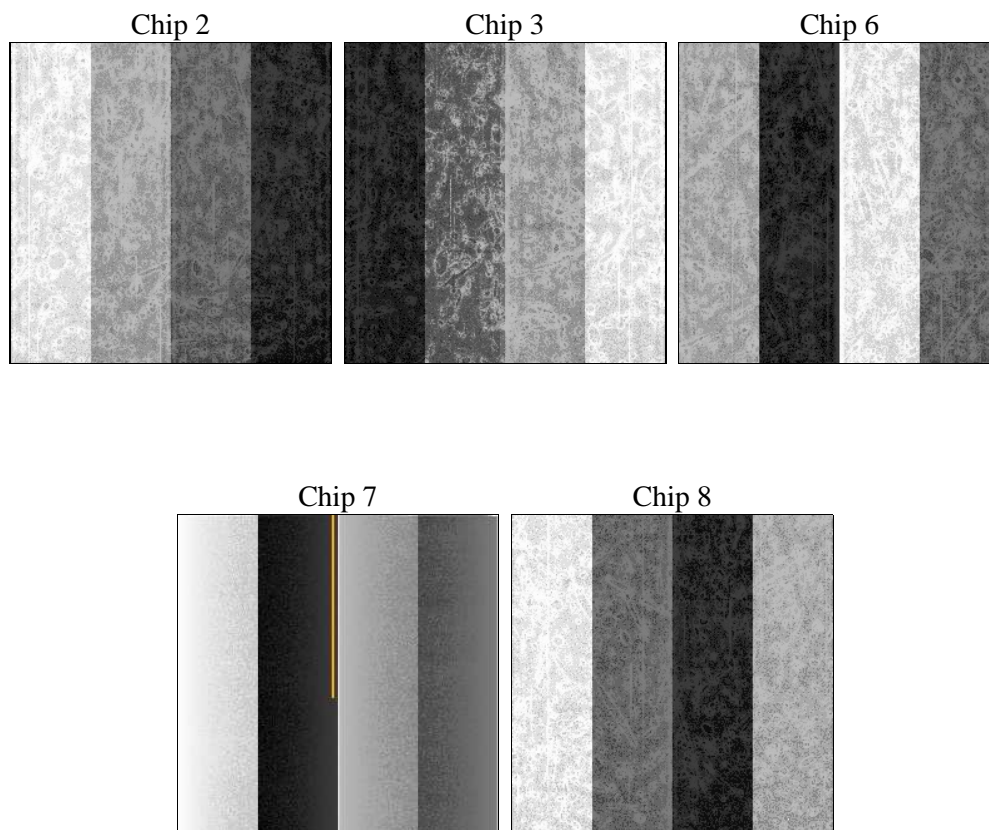
2 OBI

2.1 OBI

2.1.1 Images



2.1.2 Bias



2.1.3 Parameters

obi_num	0	Obi number	sched_exp_time	10000.000000	[s] Scheduled observation exposure time
ascdsver	8.4.3	Processing system revision	ontime	10037.8000772	Sum of GTIs [s]
caldsver	4.4.8	 	ontime2	10037.8000772	Sum of GTIs [s]
date	2012-02-22T07:40:42	Date and time of file creation	ontime3	10037.8000772	Sum of GTIs [s]
revision	2	Processing version of data	ontime6	10037.8000772	Sum of GTIs [s]
			ontime7	10037.8000772	Sum of GTIs [s]
			ontime8	10037.8000772	Sum of GTIs [s]
			l1events	331623	Number of level 1 events

2.1.4 Events

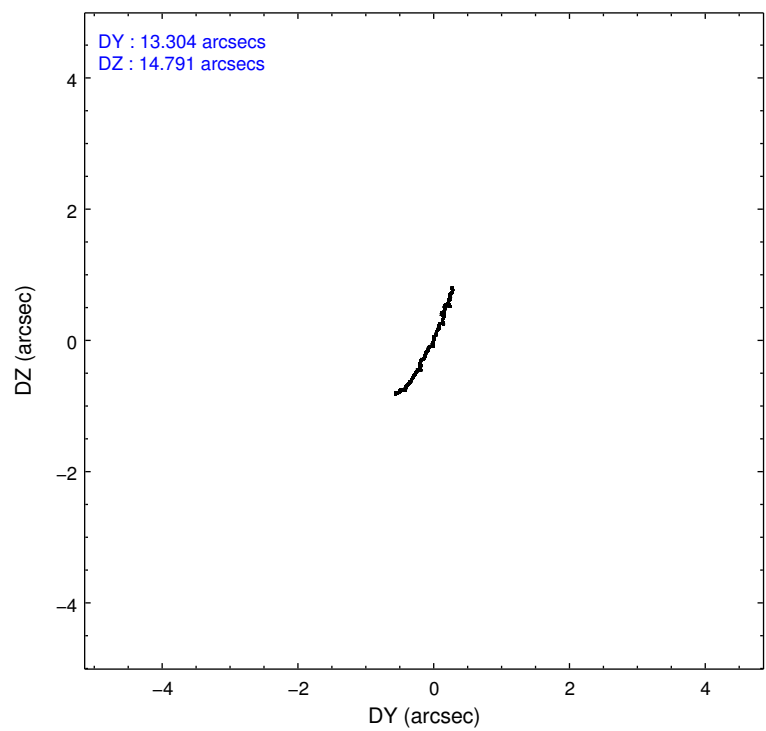
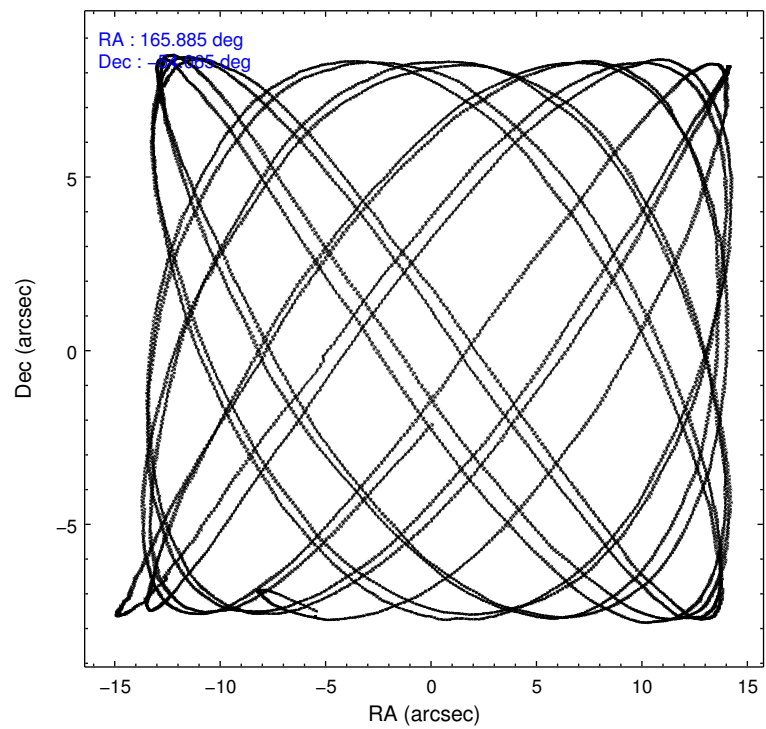
	ccd 2	ccd 3	ccd 6	ccd 7	ccd 8
level 1 events	61762	59180	63042	67241	80398
rejected events	54852	52477	55453	34288	57111
rejected %	88%	88%	87%	50%	71%

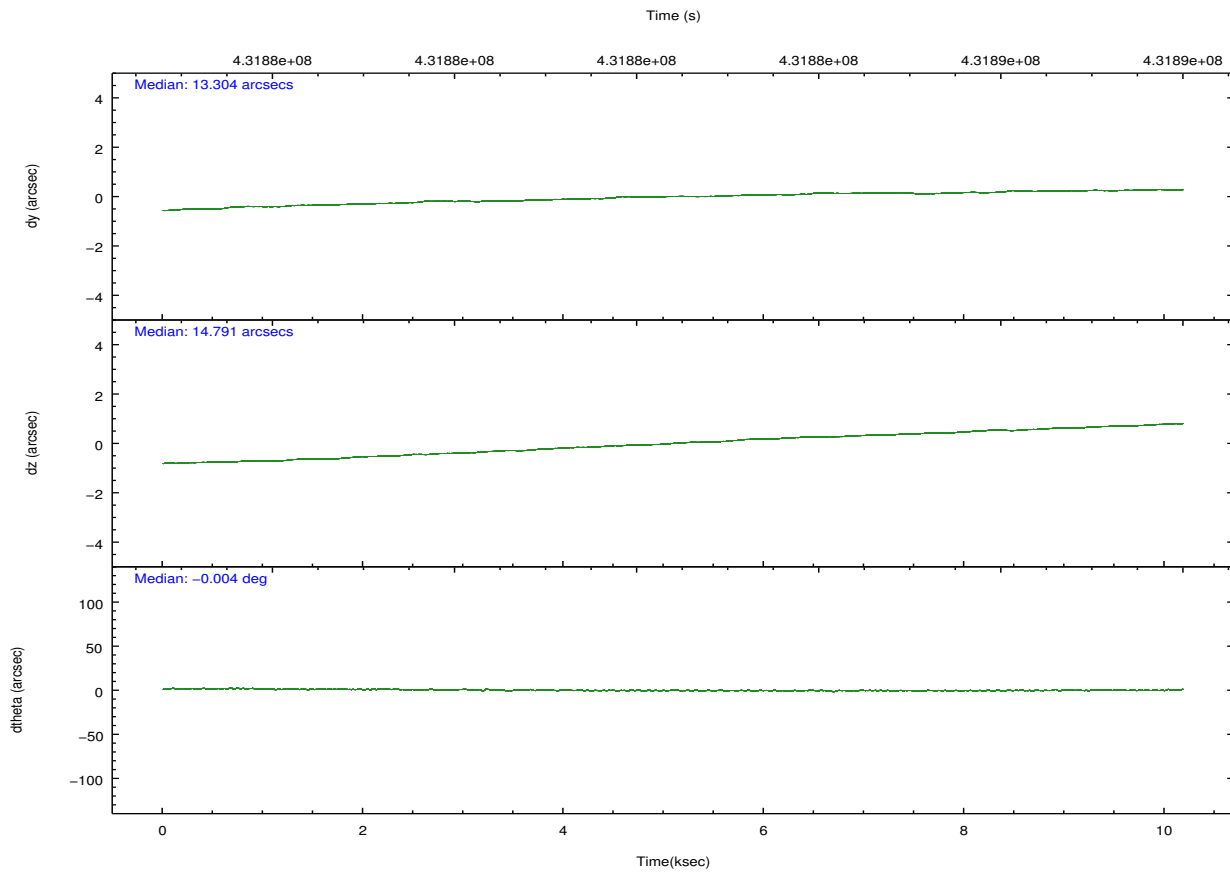
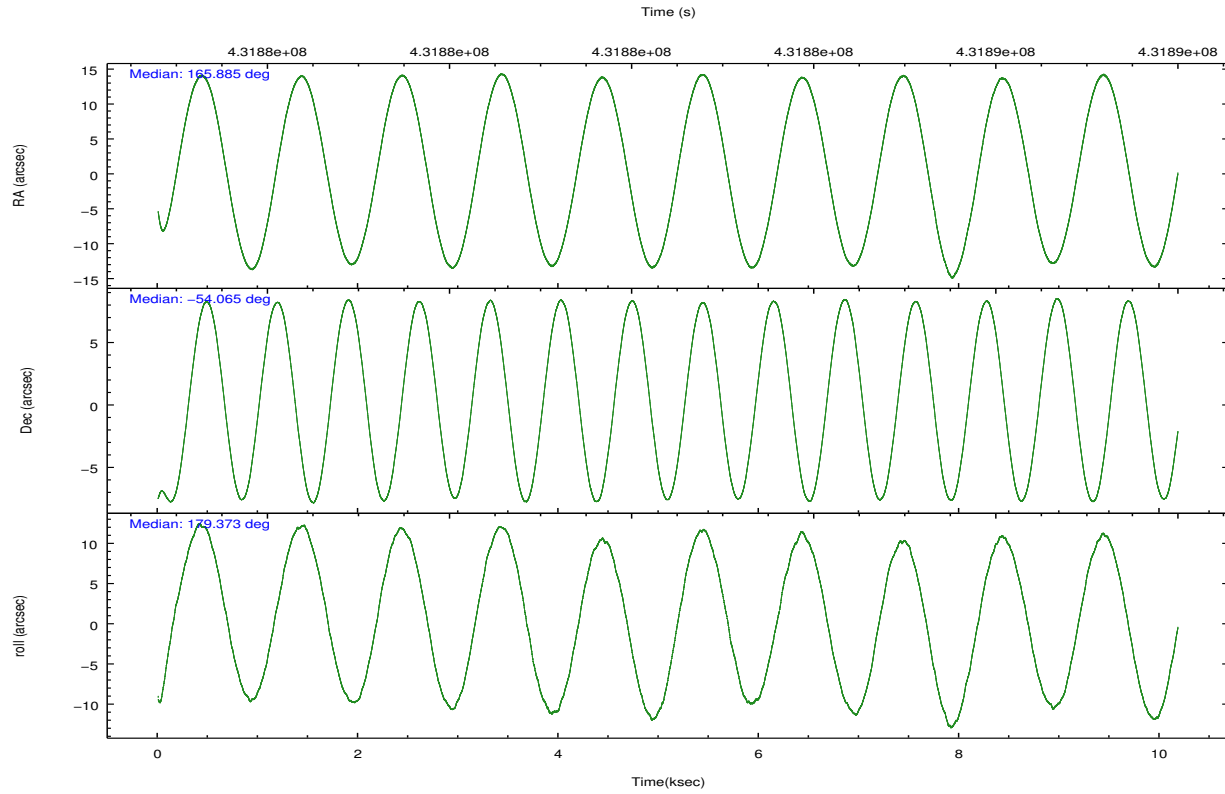
	ccd 2	ccd 3	ccd 6	ccd 7	ccd 8
grade 0 events	2621	2568	2840	3433	6514
	4%	4%	4%	5%	8%
grade 1 events	33	46	32	84	61
	0%	0%	0%	0%	0%
grade 2 events	1607	1448	1622	6985	5407
	2%	2%	2%	10%	6%
grade 3 events	707	690	779	2981	2652
	1%	1%	1%	4%	3%
grade 4 events	687	686	760	2991	2515
	1%	1%	1%	4%	3%
grade 5 events	1999	2475	2495	7111	3751
	3%	4%	3%	10%	4%
grade 6 events	1292	1320	1593	16582	6208
	2%	2%	2%	24%	7%
grade 7 events	52816	49947	52921	27074	53290
	85%	84%	83%	40%	66%

2.2 Compared Parameters

Parameter	Planned	Actual	Parameter	Planned	Actual
Instrument	ACIS	ACIS	Obspar format version number	7	7
Detector	ACIS-23678	ACIS-23678	Obspar file type	PREDICTED	ACTUAL
Grating	NONE	NONE	Obspar update status	NONE	UPDATED
Data mode	VFAINT	VFAINT	CCD I0 on	N	N
Observation mode	POINTING	POINTING	CCD I1 on	N	N
[deg] Pointing RA	165.924956	165.8846524368807	CCD I2 on	O2	Y
[deg] Pointing Dec	-54.050731	-54.06452789641443	CCD I3 on	Y	Y
[deg] Pointing Roll	179.254004	179.3779887699539	CCD S0 on	N	N
[mm] SIM focus pos	-0.684267	-0.6828225247311905	CCD S1 on	N	N
[mm] SIM defocus	0	0.001444936568705701	CCD S2 on	Y	Y
[mm] SIM translation stage pos	-190.132523	-190.1400660498719	CCD S3 on	Y	Y
[mm] SIM translation stage offset	0	0.00754346686406393	CCD S4 on	O1	Y
[s] Observation start time (MET)	431877501.184000	431876400.02583	CCD S5 on	N	N
Observation start date	2011-09-08T13:57:15	2011-09-08T13:40:00	Number of optional ACIS chips dropped	0	0
[s] Observation end time (MET)	431887501.184000	431888376.63896	On-chip summing requested	N	N
Observation end date	2011-09-08T16:43:55	2011-09-08T16:59:36	Subarray requested	NONE	NONE
Read mode	TIMED	TIMED	Alternating exposures requested	N	N
			[s] Primary exposure time	0.000000	3.1

2.3 Aspect



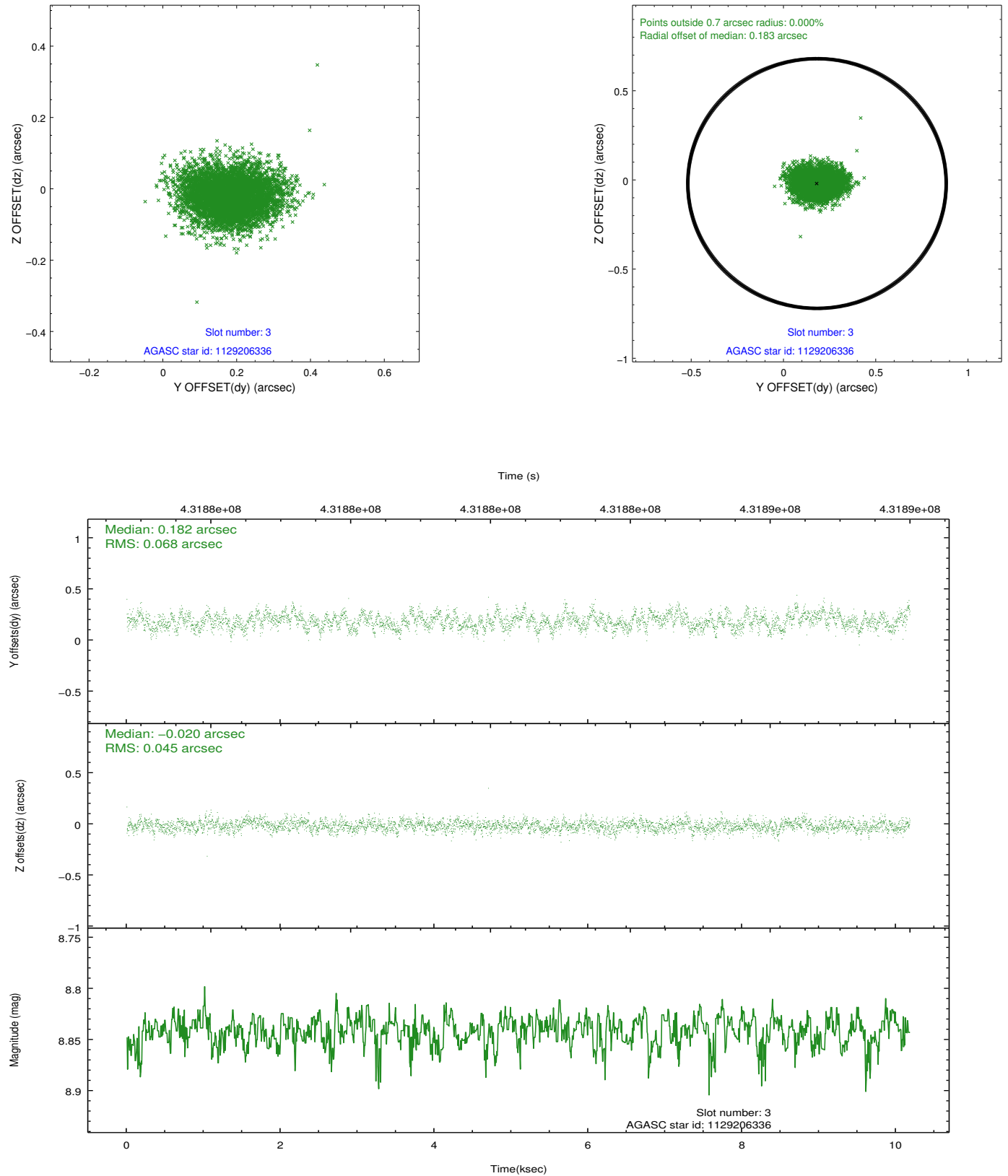


Slot Statistics

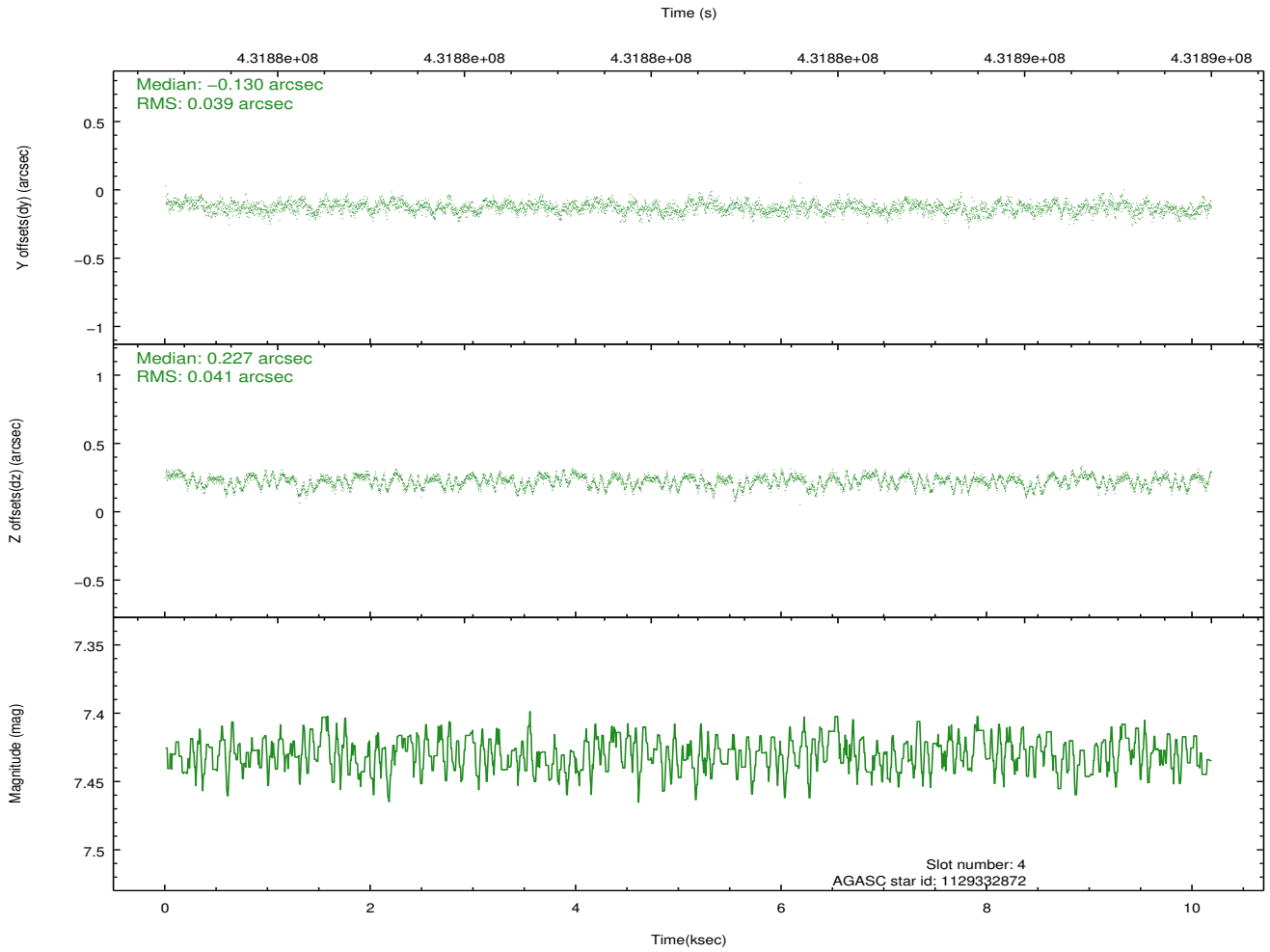
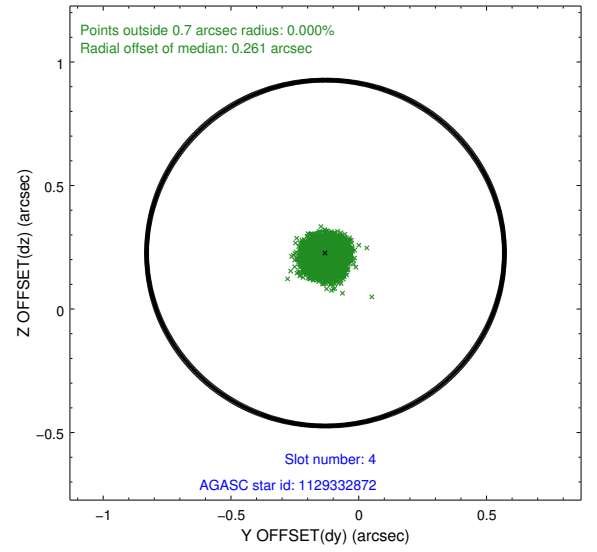
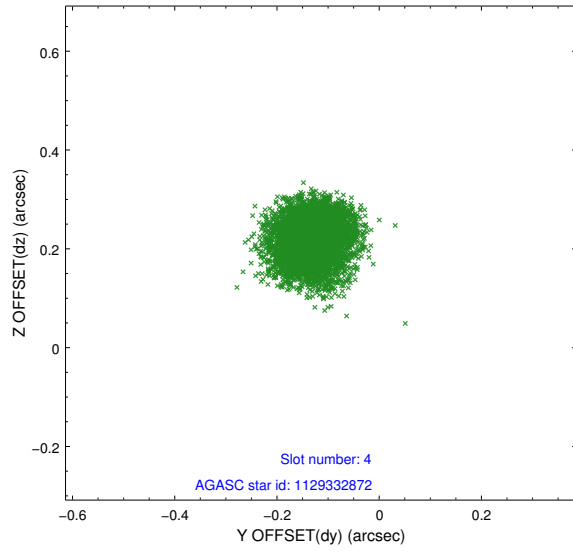
slot	status	id	mag	n_pts	med_dy	med_dz	dr1	dr2	ra	dec	mean_y	mean_z
0	FID	ACIS-S-2	6.88	2483	-0.065	-0.028	0.016	0.026	0.000000	0.000000	-766.23	-1736.18
1	FID	ACIS-S-4	6.97	2483	0.238	0.039	0.019	0.039	0.000000	0.000000	2147.10	171.85
2	FID	ACIS-S-5	7.00	2482	-0.202	-0.002	0.014	0.022	0.000000	0.000000	-1818.55	166.05
3	GUIDE	1129206336	8.84	4962	0.182	-0.020	0.087	0.143	165.162393	-53.574678	1652.79	-1683.77
4	GUIDE	1129332872	7.43	4966	-0.130	0.227	0.061	0.097	166.852792	-53.868587	-1960.63	-668.80
5	GUIDE	1129709784	8.44	4965	-0.093	-0.145	0.082	0.125	165.341324	-54.584250	1192.64	1940.87
6	GUIDE	1129720696	8.03	4965	-0.147	-0.102	0.072	0.116	165.076816	-54.567909	1745.62	1895.73
7	GUIDE	1129203752	9.04	4962	0.188	0.045	0.092	0.145	166.636741	-53.731965	-1500.18	-1159.39

2.4 Star Slots

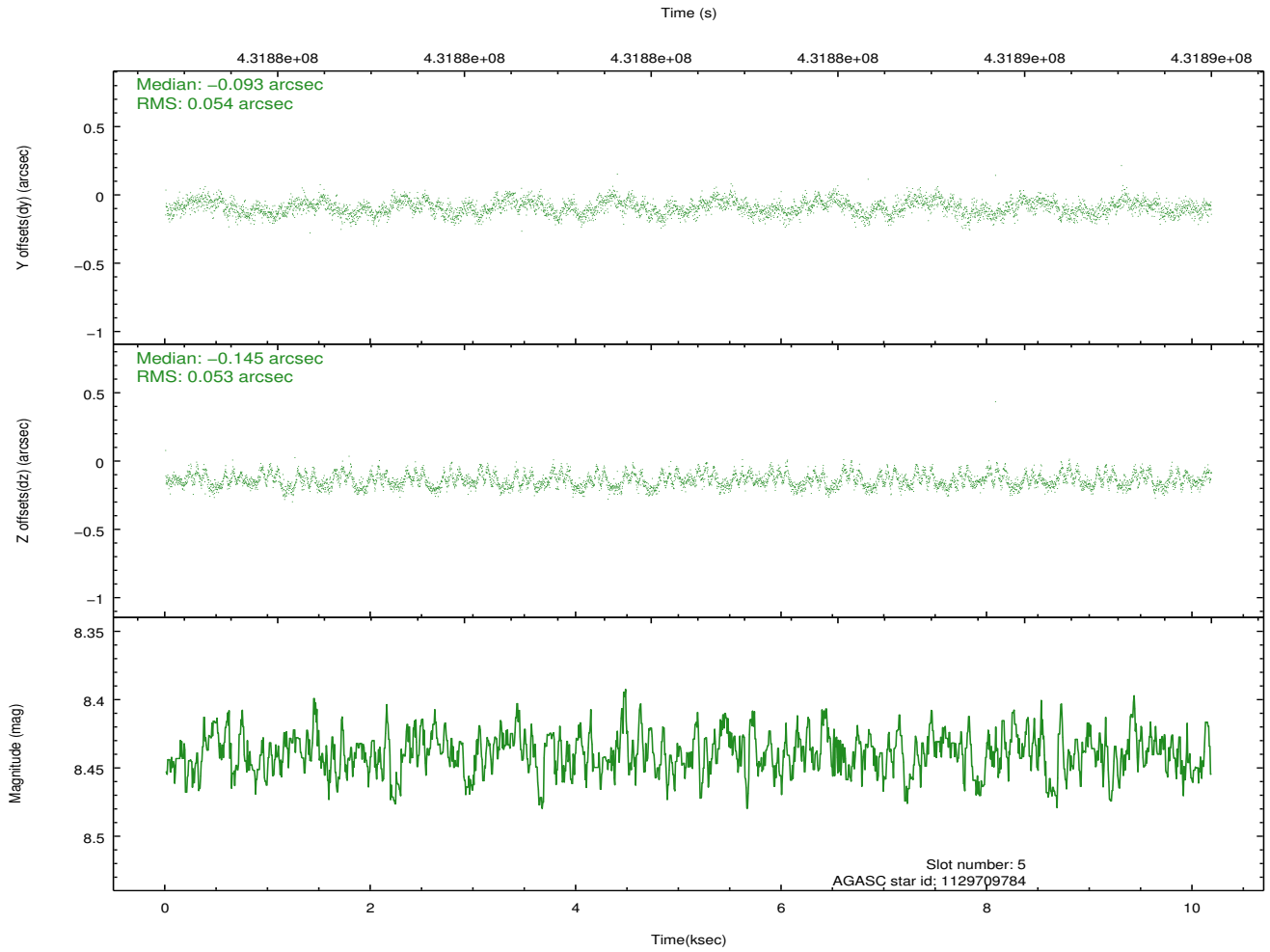
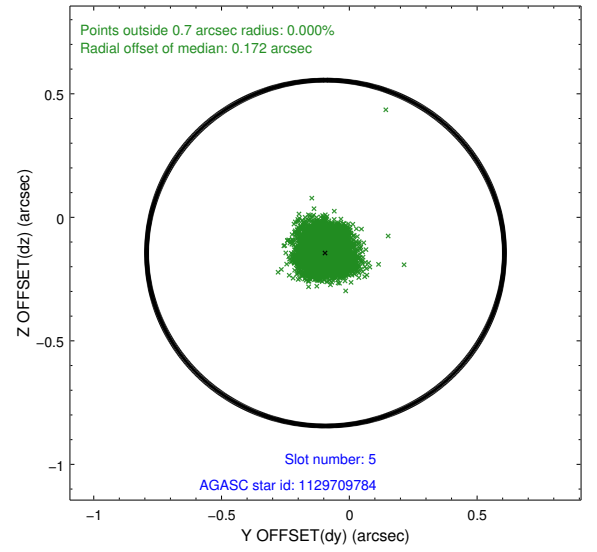
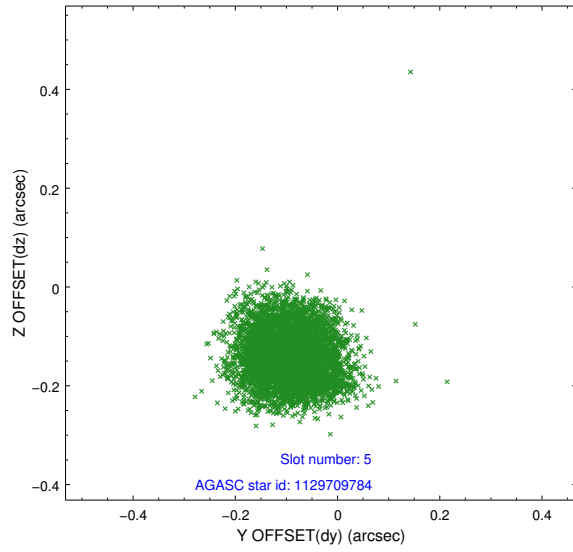
2.4.1 Slot 3



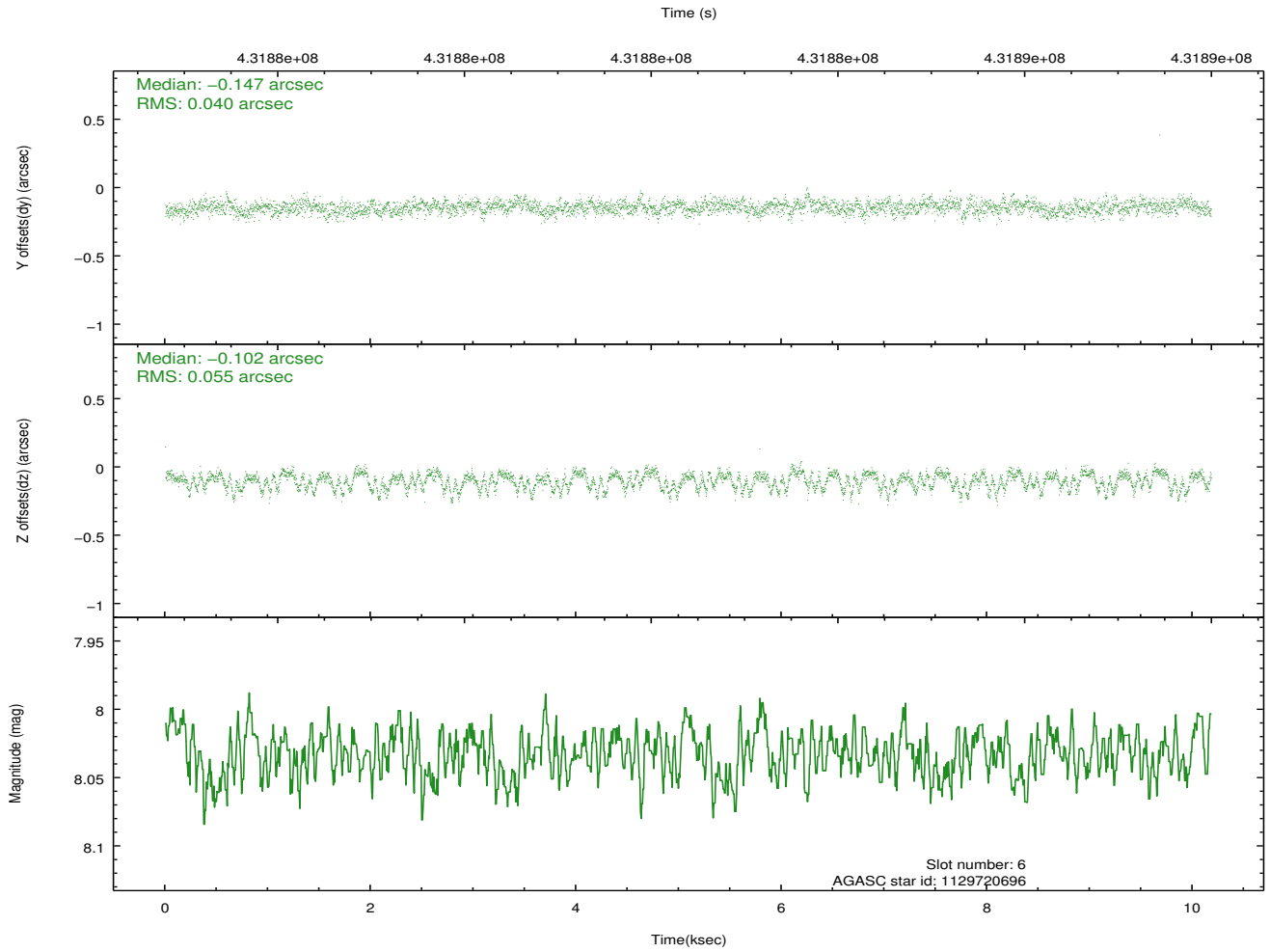
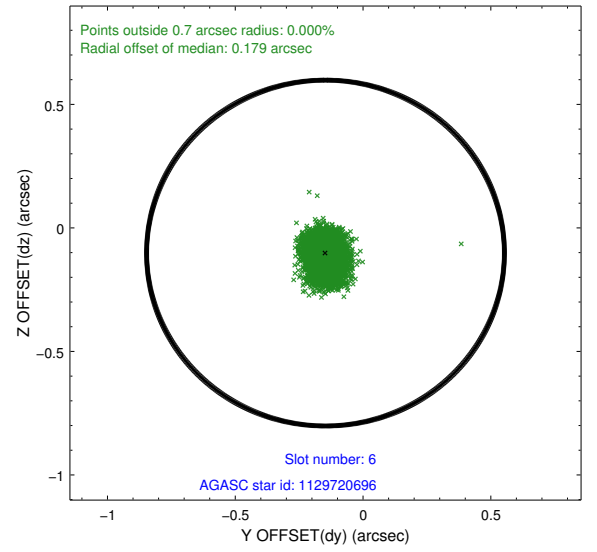
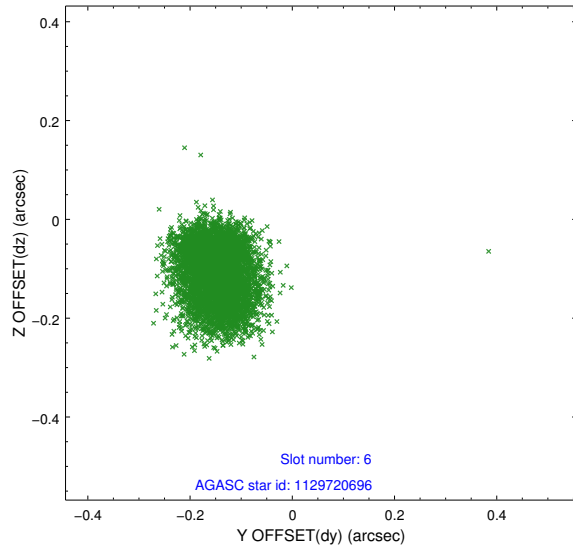
2.4.2 Slot 4



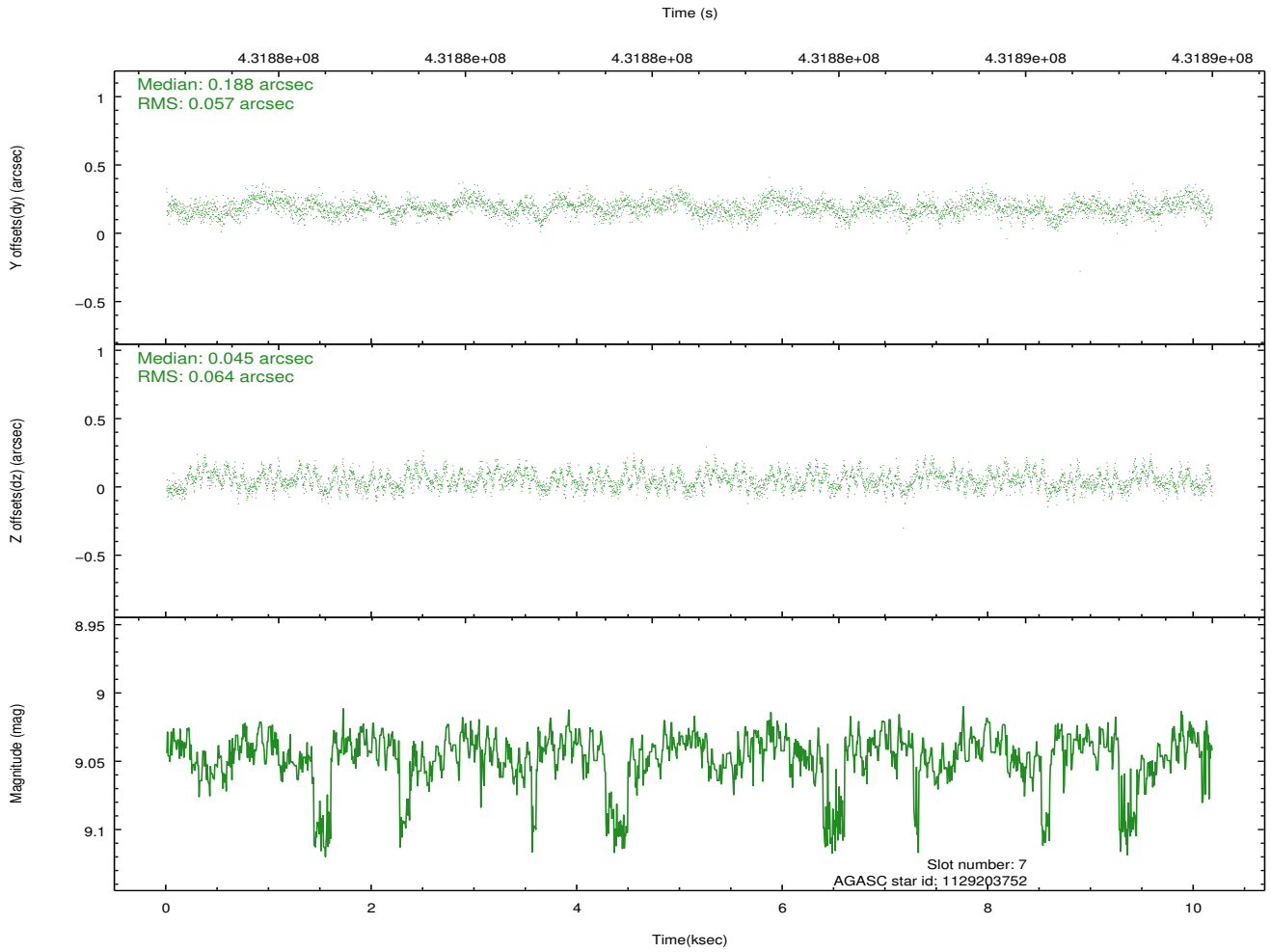
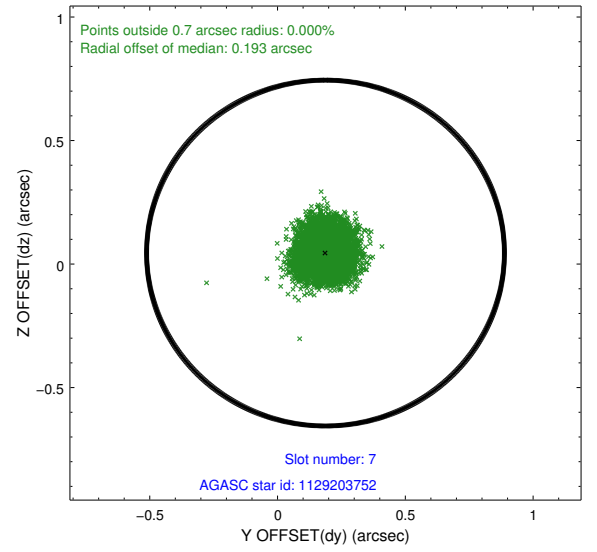
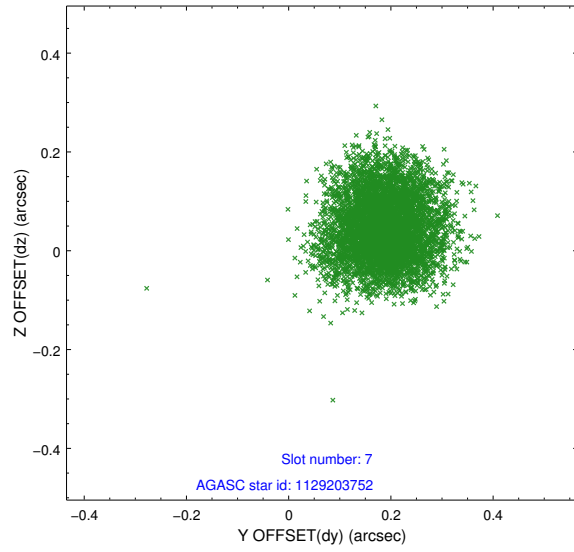
2.4.3 Slot 5



2.4.4 Slot 6

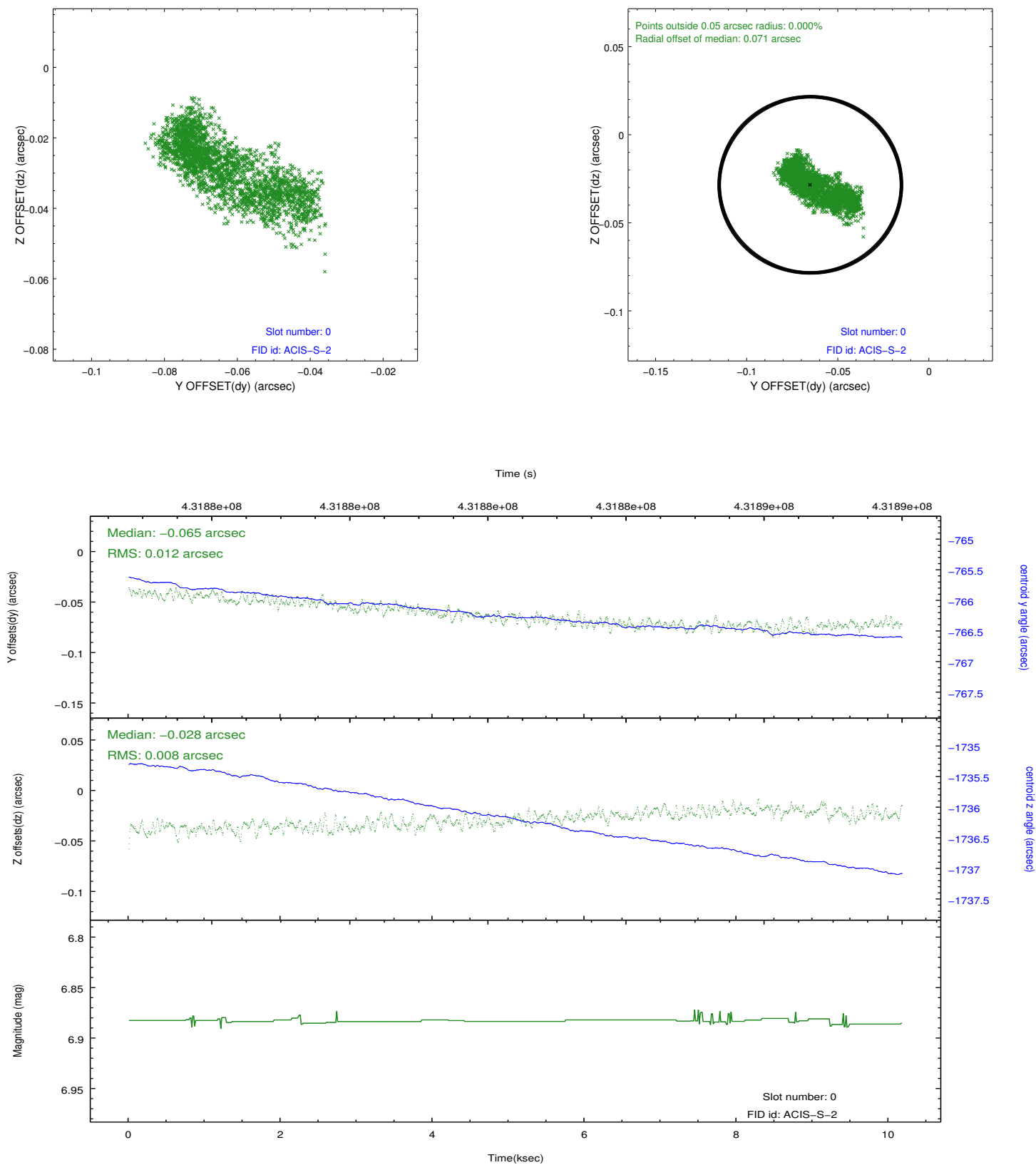


2.4.5 Slot 7

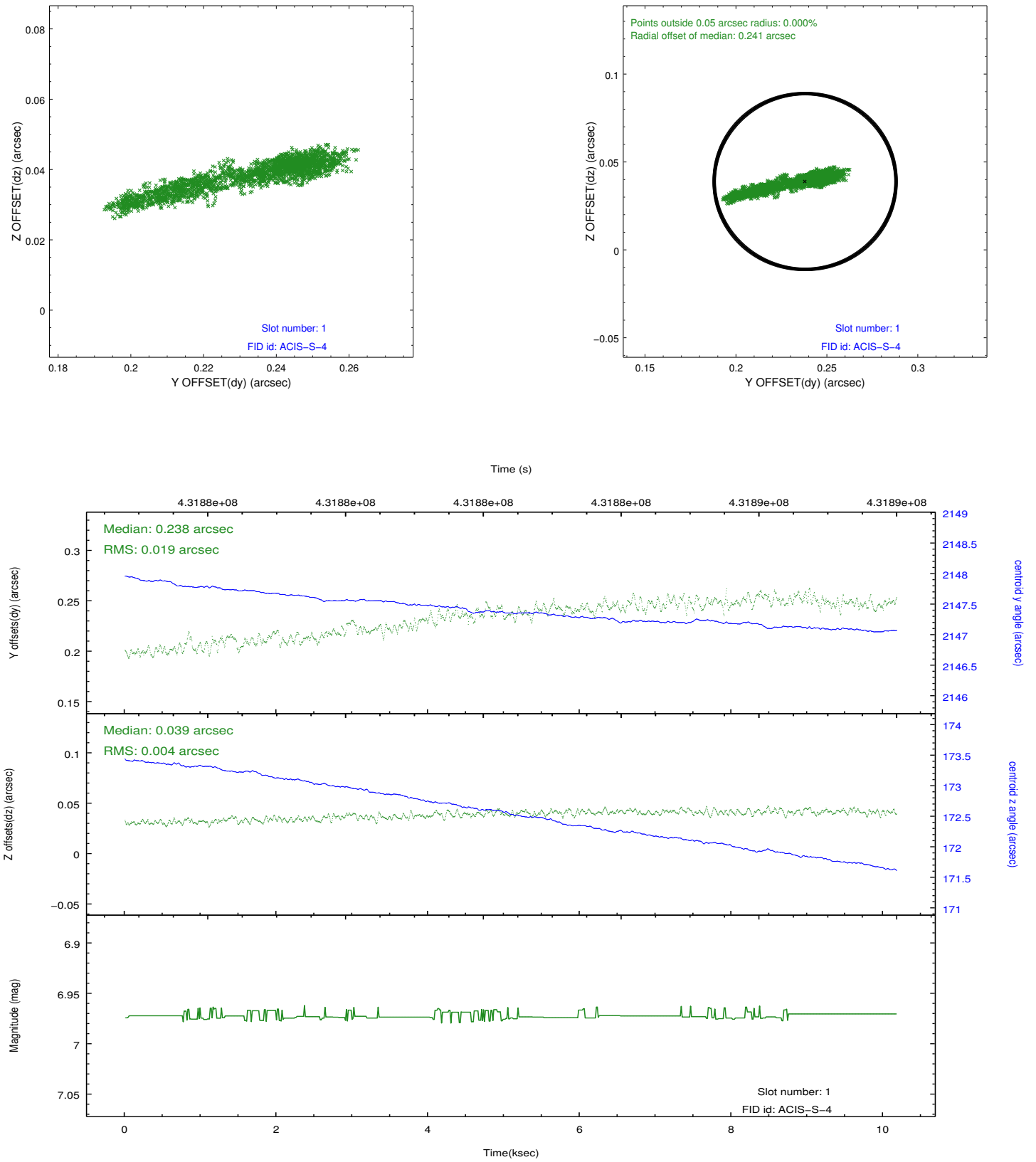


2.5 FID Slots

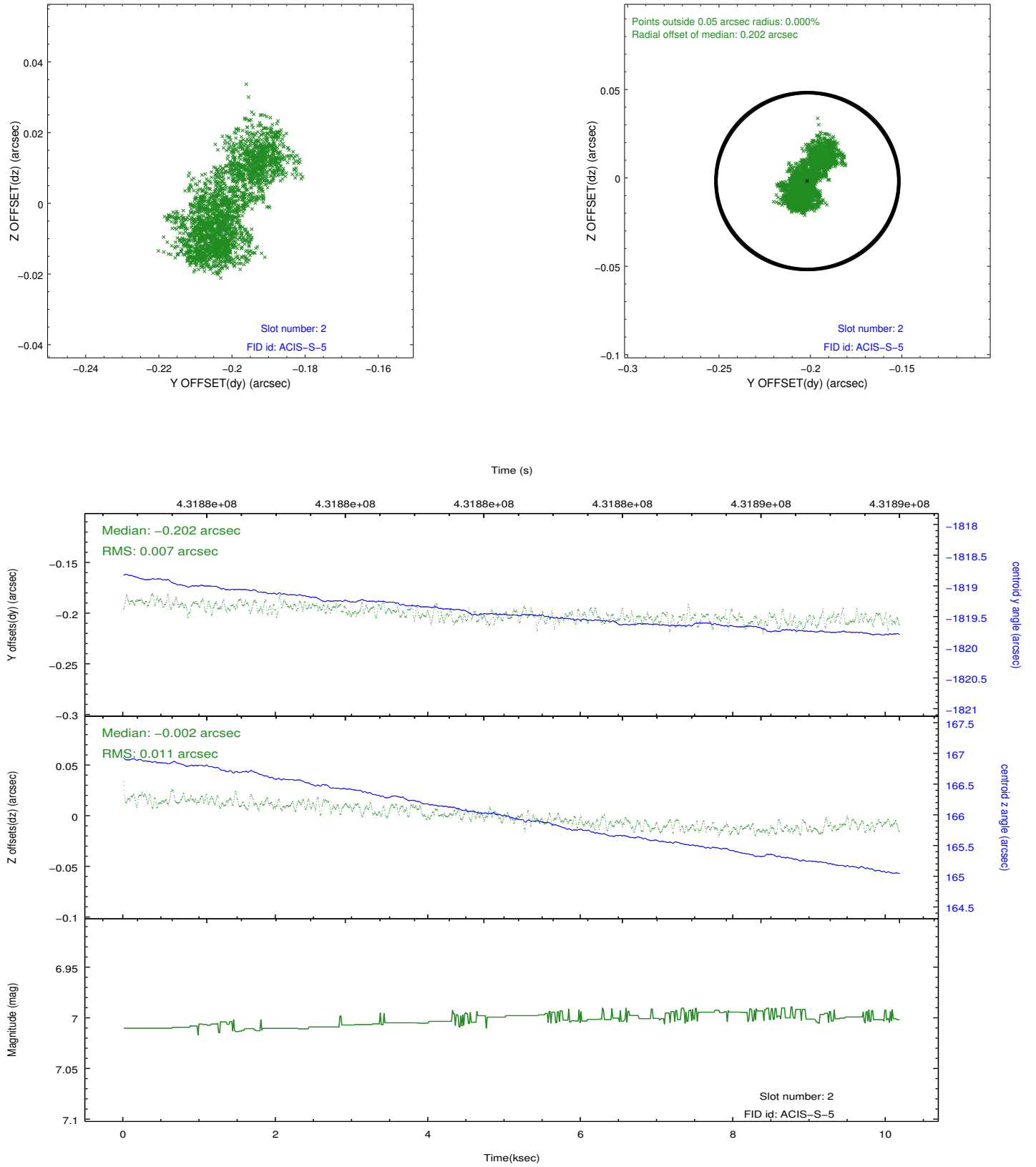
2.5.1 Slot 0



2.5.2 Slot 1



2.5.3 Slot 2



A Summary

A.1 Status

V&V Scientist	Beth Sundheim
V&V Date (YYYY-MM-DD)	2012.02.23
V&V Edition	1
V&V Disposition and Status	OK
V&V Charge Time	10.0378000772

A.2 Comments