

V&V Reference Report

L2 ASCDS Version : 8.4.5

Observation 12278 - L2 Version 2
Chandra X-Ray Center

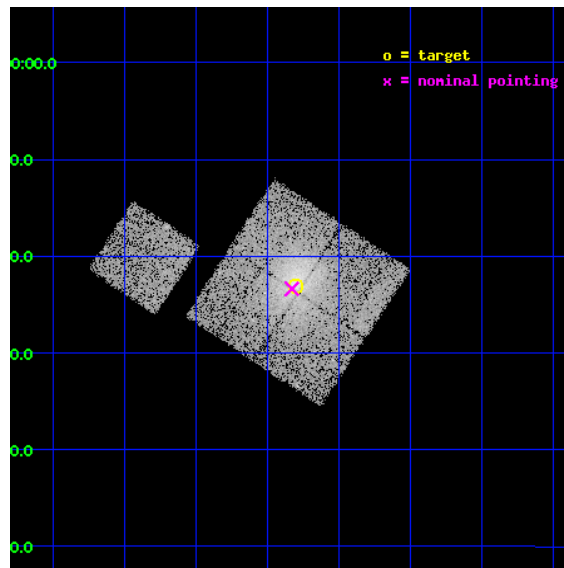
L2 Processing Date : Jul 4 2012

Contents

1	Front	2
2	OBI	3
2.1	OBI	3
2.1.1	Images	3
2.1.2	Bias	3
2.1.3	Parameters	4
2.1.4	Events	4
2.2	Compared Parameters	5
2.3	Aspect	6
2.4	Star Slots	9
2.4.1	Slot 3	9
2.4.2	Slot 4	10
2.4.3	Slot 5	11
2.4.4	Slot 6	12
2.4.5	Slot 7	13
2.5	FID Slots	14
2.5.1	Slot 0	14
2.5.2	Slot 1	15
2.5.3	Slot 2	16
A	Summary	17
A.1	Status	17
A.2	Comments	17

1 Front

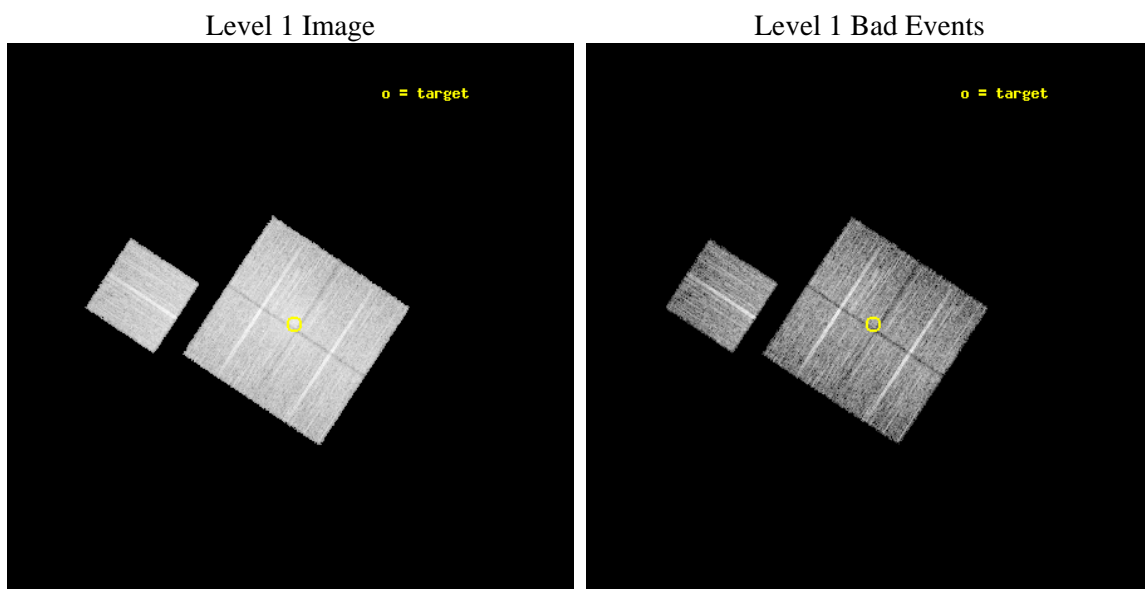
seq_num	800997	Sequence number
obs_id	12278	Observation id
title	A 'CENTENNIAL' SAMPLE OF THE 100 X-RAY BRIGHTEST GALAXY CLUSTERS	
observer	Dr. Alexey Vikhlinin	Principal investigator
object	RXJ2344.3-042	Source name
dtcycle	0	
cycle	P	events from which exps? Prim/Second/Both
ra_targ	356.07625	Observer's specified target RA [deg]
dec_targ	-4.384528	Observer's specified target Dec [deg]
ra_nom	356.08252804187	Nominal RA [deg]
dec_nom	-4.3896685507988	Nominal Dec [deg]
roll_nom	303.39637313413	Nominal Roll [deg]
revision	2	Processing version of data
ontime	10051.942444086	Sum of GTIs [s]
livetime	9920.6064159217	Livetime [s]
ontime0	10042.396343052	Sum of GTIs [s]
ontime1	10051.860364079	Sum of GTIs [s]
ontime2	10051.901404083	Sum of GTIs [s]
ontime3	10051.942444086	Sum of GTIs [s]
ontime6	10051.778284073	Sum of GTIs [s]
l2events	50402	Number of level 2 events



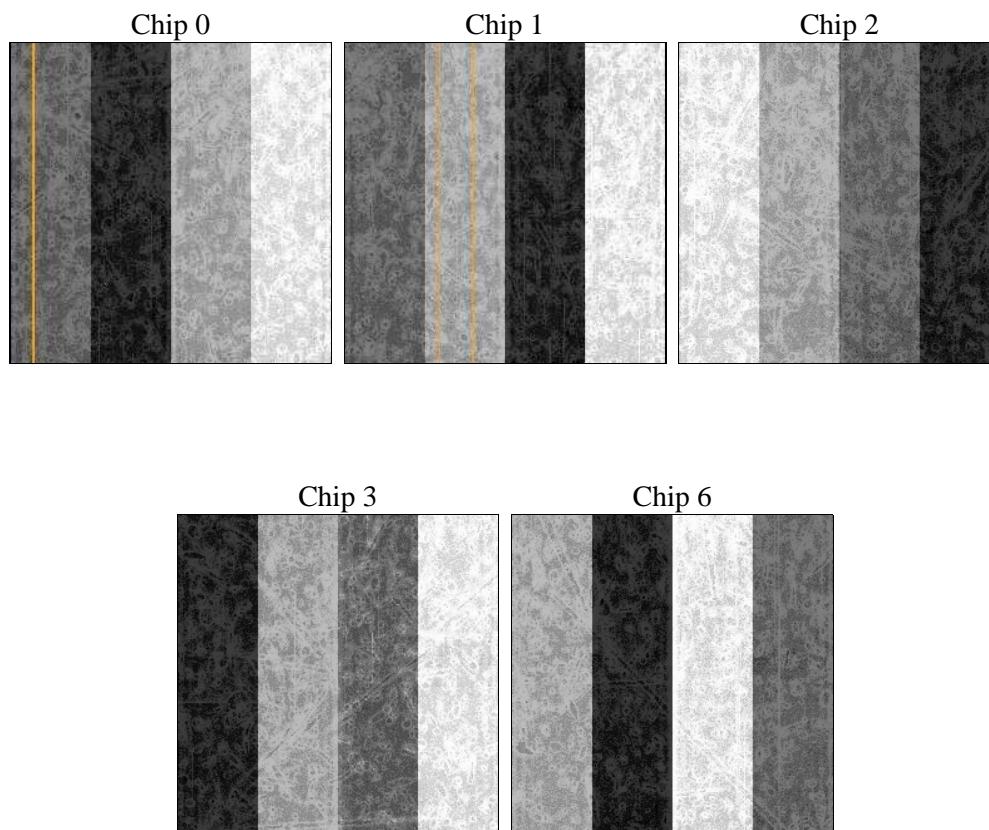
2 OBI

2.1 OBI

2.1.1 Images



2.1.2 Bias



2.1.3 Parameters

obi_num	0	Obi number	sched_exp_time	10000.000000	[s] Scheduled observation exposure time
ascdsver	8.4.5	Processing system revision	ontime	10051.942444086	Sum of GTIs [s]
caldsver	4.5.0	 	ontime0	10042.396343052	Sum of GTIs [s]
date	2012-07-04T03:13:25	Date and time of file creation	ontime1	10051.860364079	Sum of GTIs [s]
revision	2	Processing version of data	ontime2	10051.901404083	Sum of GTIs [s]
			ontime3	10051.942444086	Sum of GTIs [s]
			ontime6	10051.778284073	Sum of GTIs [s]
			l1events	374728	Number of level 1 events

2.1.4 Events

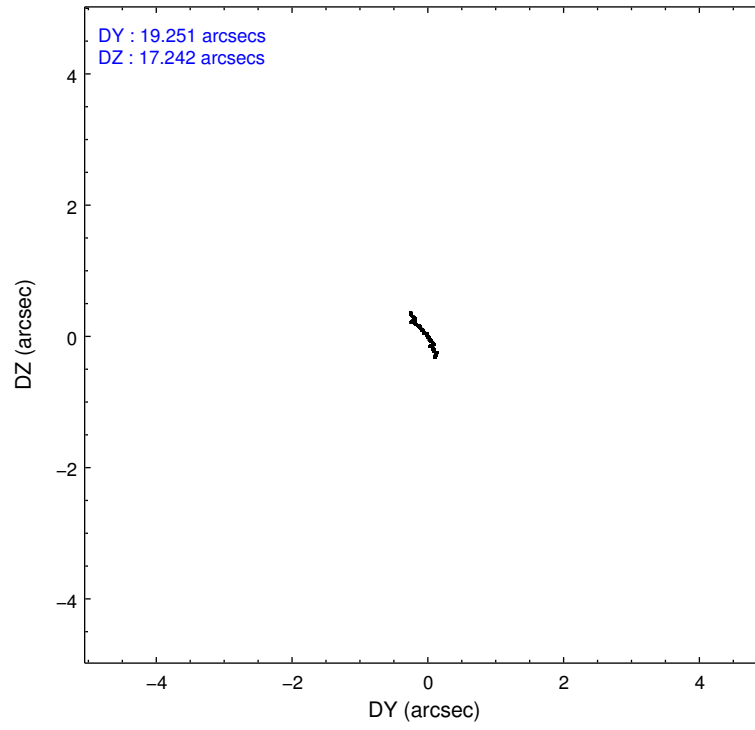
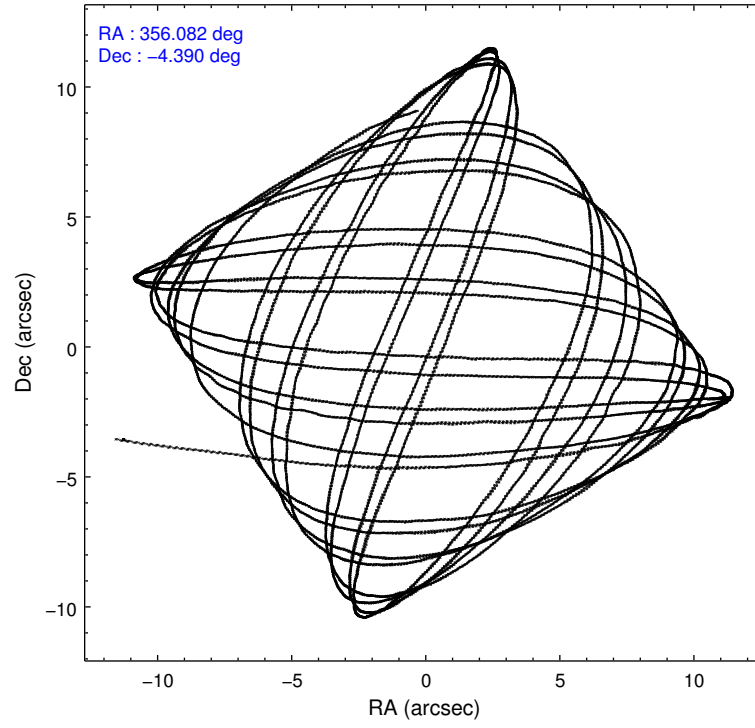
	ccd 0	ccd 1	ccd 2	ccd 3	ccd 6
level 1 events	70856	71675	77409	81478	73310
rejected events	60267	59518	65753	66458	64997
rejected %	85%	83%	84%	81%	88%

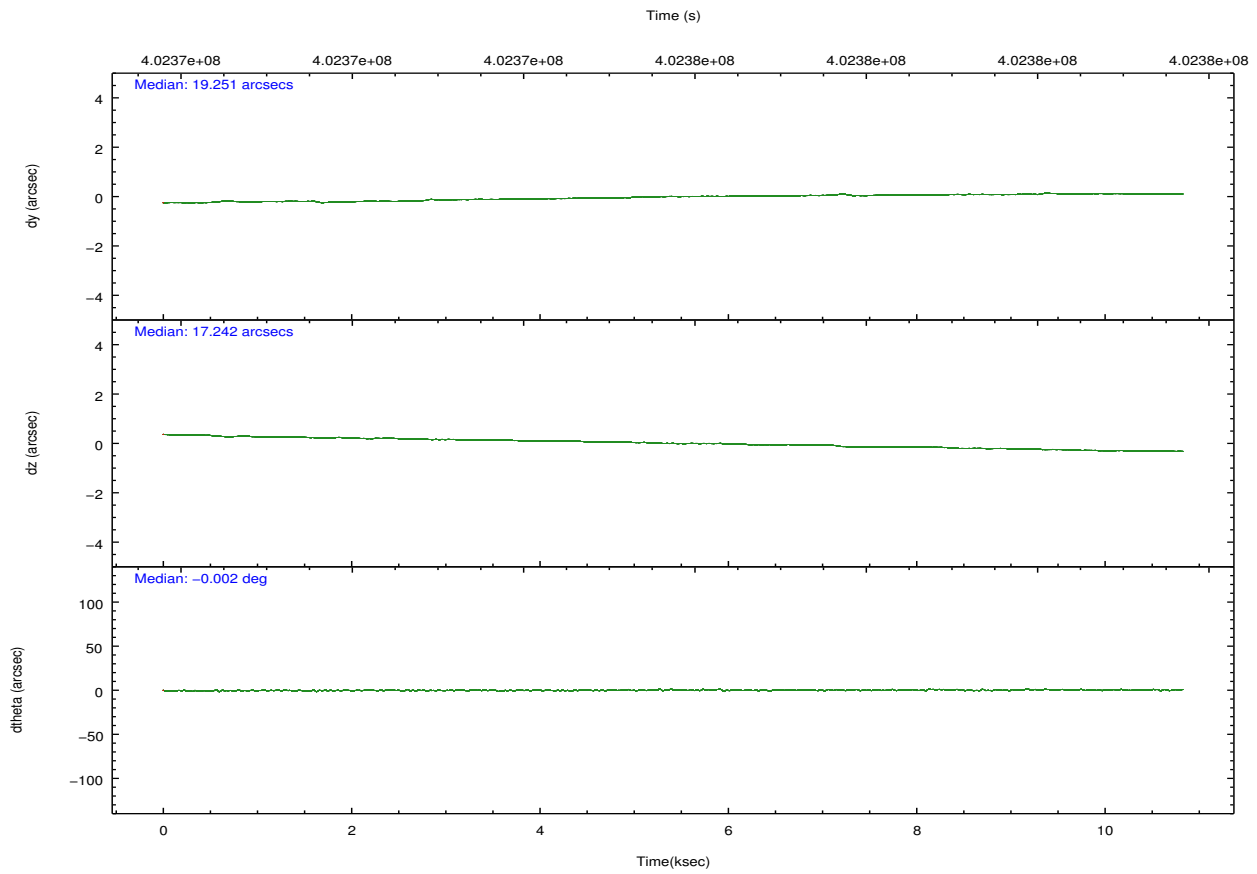
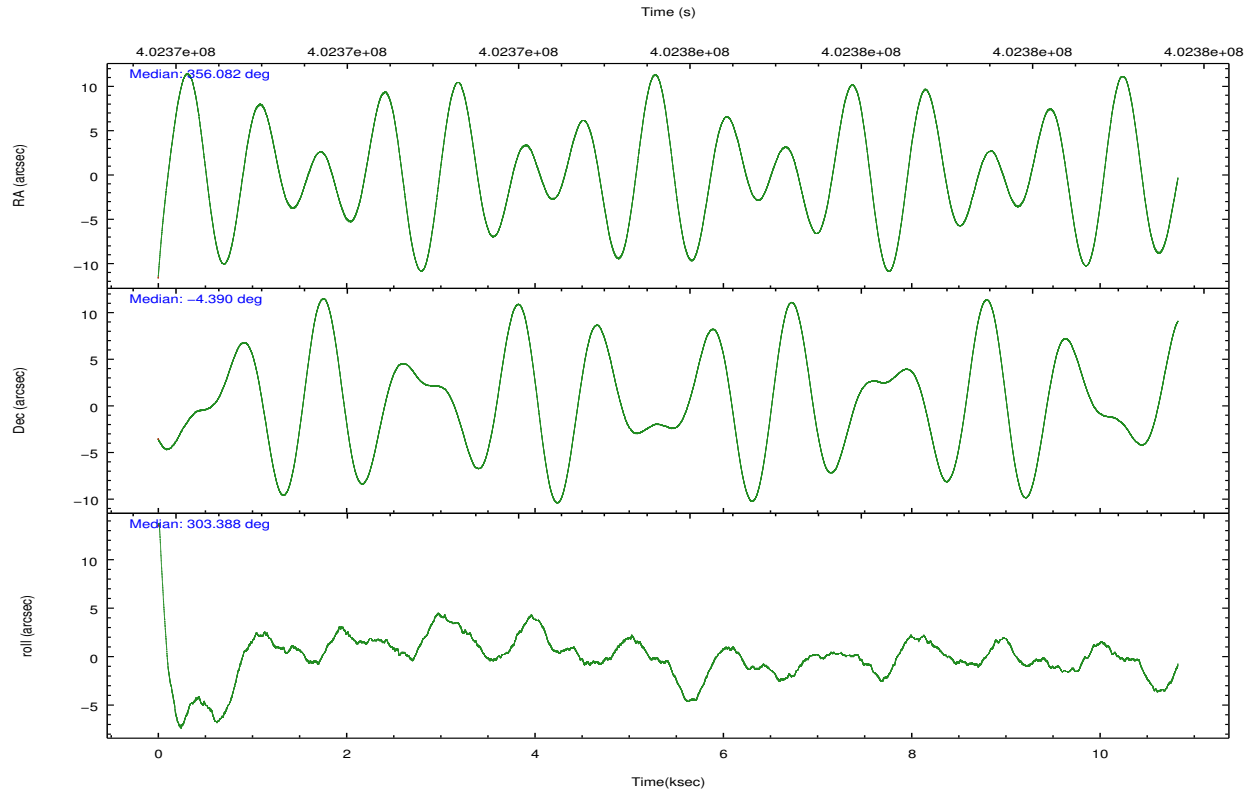
	ccd 0	ccd 1	ccd 2	ccd 3	ccd 6
grade 0 events	4853	5896	5939	8791	2876
	6%	8%	7%	10%	3%
grade 1 events	57	40	58	84	36
	0%	0%	0%	0%	0%
grade 2 events	2274	2416	2262	2376	1841
	3%	3%	2%	2%	2%
grade 3 events	908	1008	918	1046	848
	1%	1%	1%	1%	1%
grade 4 events	912	1008	977	1090	867
	1%	1%	1%	1%	1%
grade 5 events	2912	3216	2838	3431	3222
	4%	4%	3%	4%	4%
grade 6 events	1649	1835	1572	1725	1886
	2%	2%	2%	2%	2%
grade 7 events	57291	56256	62845	62935	61734
	80%	78%	81%	77%	84%

2.2 Compared Parameters

Parameter	Planned	Actual	Parameter	Planned	Actual
Instrument	ACIS	ACIS	Obspar format version number	7	7
Detector	ACIS-01236	ACIS-01236	Obspar file type	PREDICTED	ACTUAL
Grating	NONE	NONE	Obspar update status	NONE	UPDATED
Data mode	VFAINT	VFAINT	CCD I0 on	Y	Y
Observation mode	POINTING	POINTING	CCD I1 on	Y	Y
[deg] Pointing RA	356.057810	356.0825280418744	CCD I2 on	Y	Y
[deg] Pointing Dec	-4.377432	-4.389668550798827	CCD I3 on	Y	Y
[deg] Pointing Roll	303.185779	303.3963731341337	CCD S0 on	N	N
[mm] SIM focus pos	-0.782348	-0.7809083437167272	CCD S1 on	N	N
[mm] SIM defocus	0	0.001439871863259334	CCD S2 on	O1	Y
[mm] SIM translation stage pos	-233.592463	-233.5874344608287	CCD S3 on	N	N
[mm] SIM translation stage offset	0	-0.005018542100998502	CCD S4 on	N	N
[s] Observation start time (MET)	402371162.184000	402369392.79278	CCD S5 on	N	N
Observation start date	2010-10-02T01:44:56	2010-10-02T01:16:32	Number of optional ACIS chips dropped	0	0
[s] Observation end time (MET)	402381162.184000	402381738.91841	On-chip summing requested	N	N
Observation end date	2010-10-02T04:31:36	2010-10-02T04:42:18	Subarray requested	NONE	NONE
Read mode	TIMED	TIMED	Alternating exposures requested	N	N
			[s] Primary exposure time	0.000000	3.1

2.3 Aspect



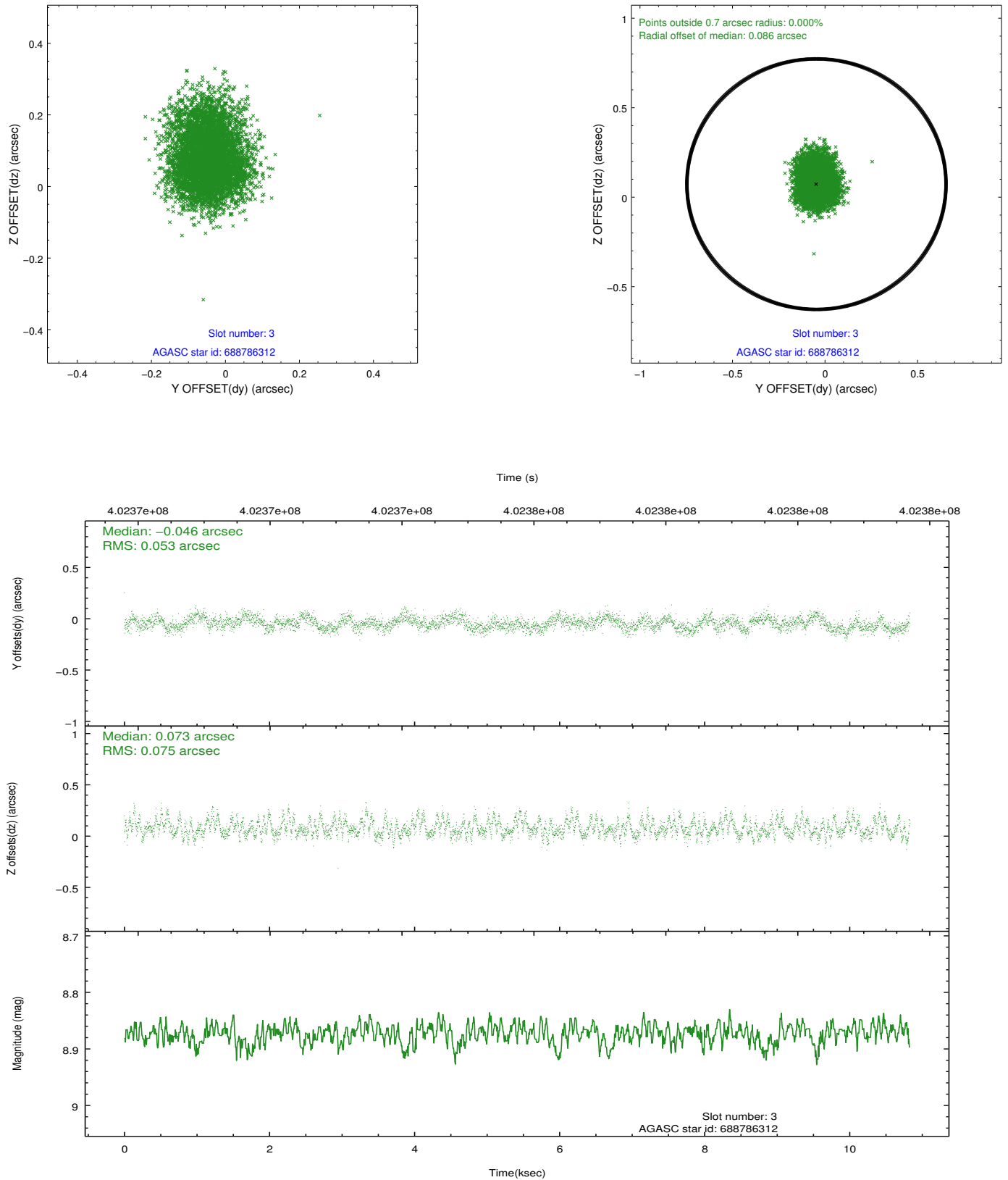


Slot Statistics

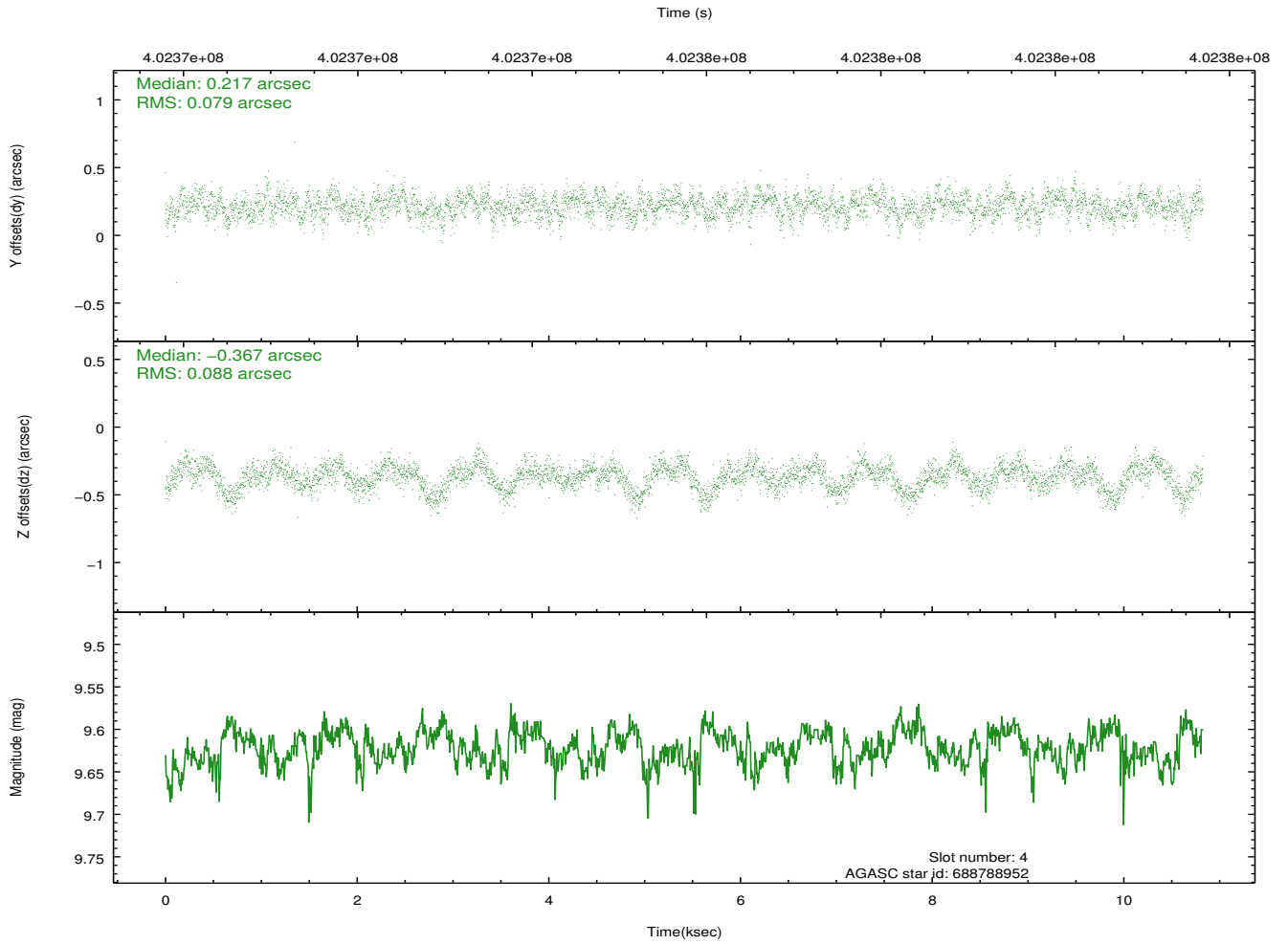
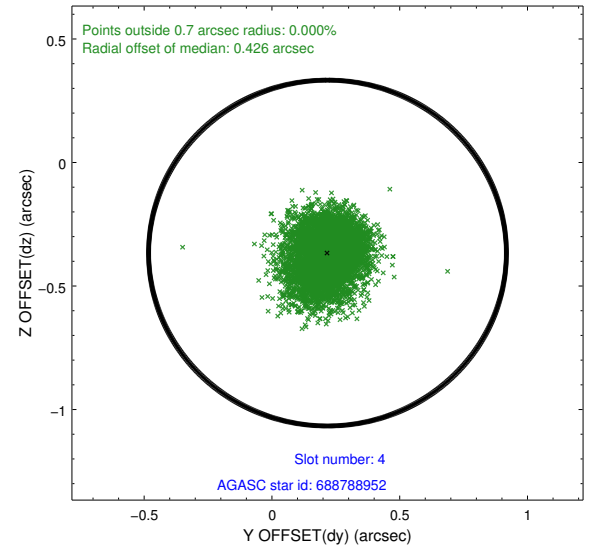
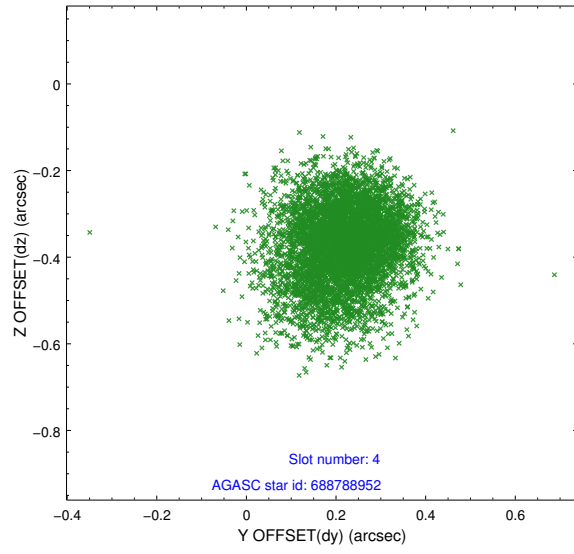
slot	status	id	mag	n_pts	med_dy	med_dz	dr1	dr2	ra	dec	mean_y	mean_z
0	FID	ACIS-I-1	6.96	2642	0.068	-0.009	0.009	0.015	0.000000	0.000000	920.20	-840.91
1	FID	ACIS-I-5	6.94	2640	-0.257	0.064	0.006	0.010	0.000000	0.000000	-1827.97	1056.41
2	FID	ACIS-I-6	6.97	2640	0.098	0.014	0.009	0.014	0.000000	0.000000	385.25	1701.40
3	GUIDE	688786312	8.87	5278	-0.046	0.073	0.097	0.159	355.324833	-4.423188	-1300.29	-2292.24
4	GUIDE	688788952	9.62	5279	0.217	-0.367	0.125	0.206	356.389420	-4.789943	1894.45	182.10
5	GUIDE	689180584	8.71	5270	-0.033	0.107	0.107	0.168	356.145681	-5.007059	2070.39	-976.20
6	GUIDE	688792536	7.88	5281	-0.135	-0.064	0.075	0.122	356.913425	-4.461664	1936.63	2403.66
7	GUIDE	689183488	9.70	5274	-0.001	0.251	0.161	0.262	355.996704	-5.204906	2374.11	-1812.89

2.4 Star Slots

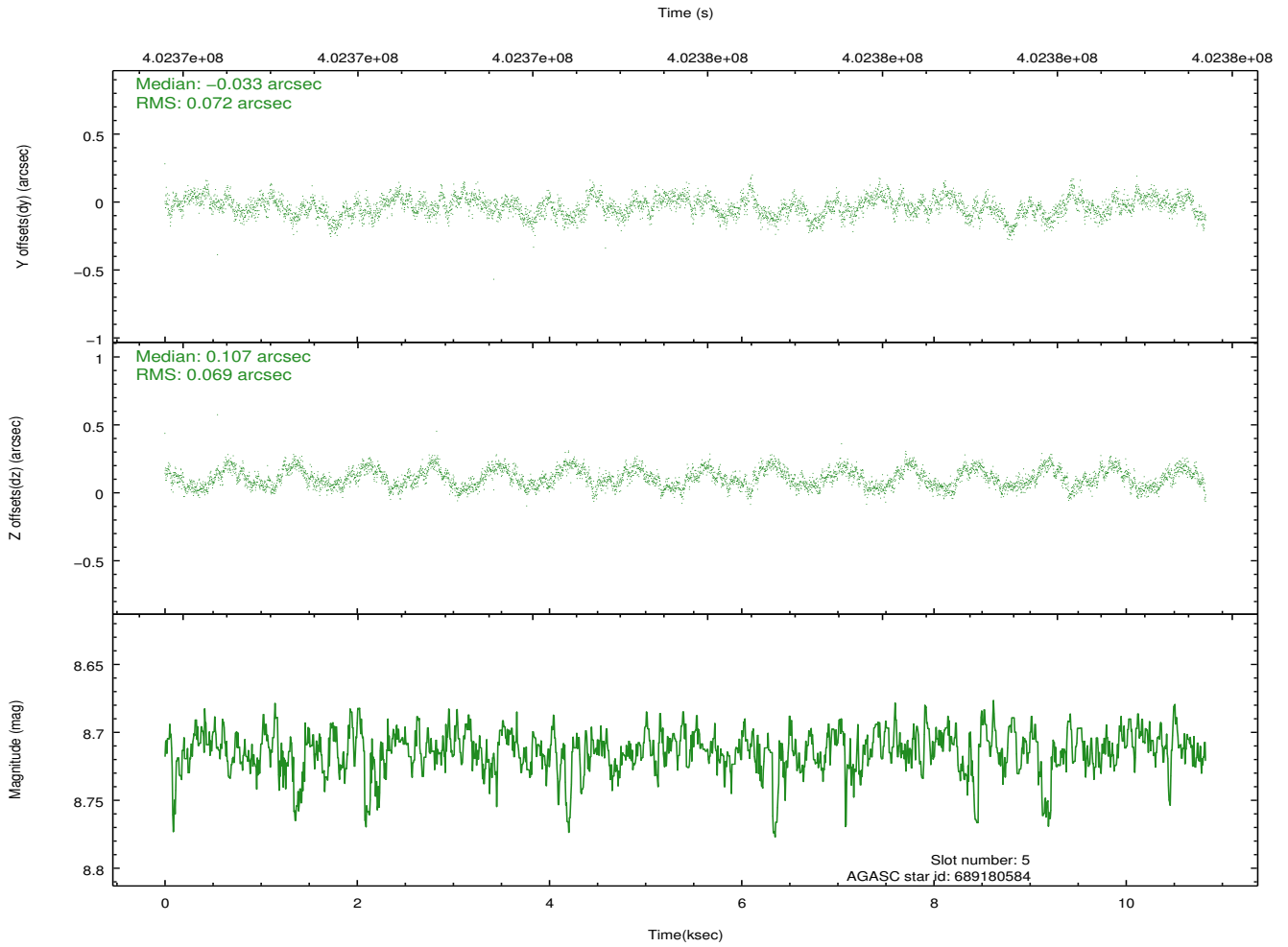
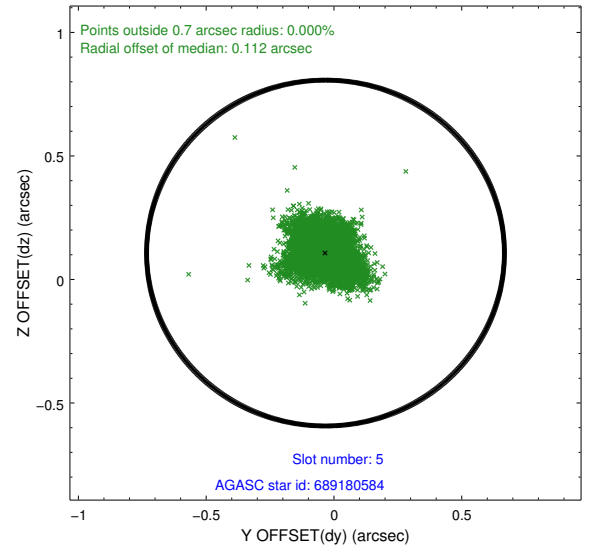
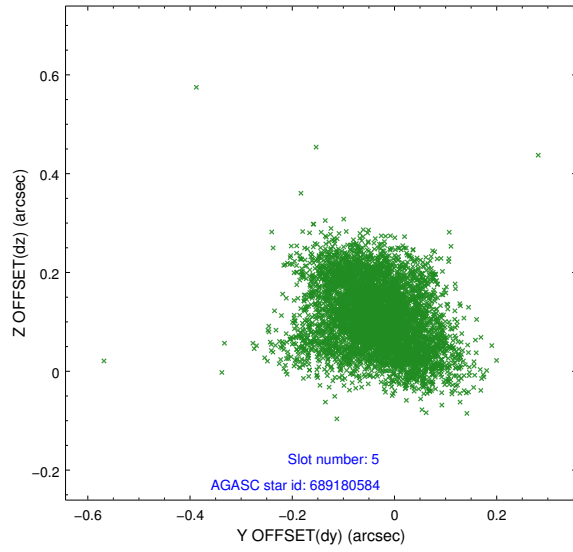
2.4.1 Slot 3



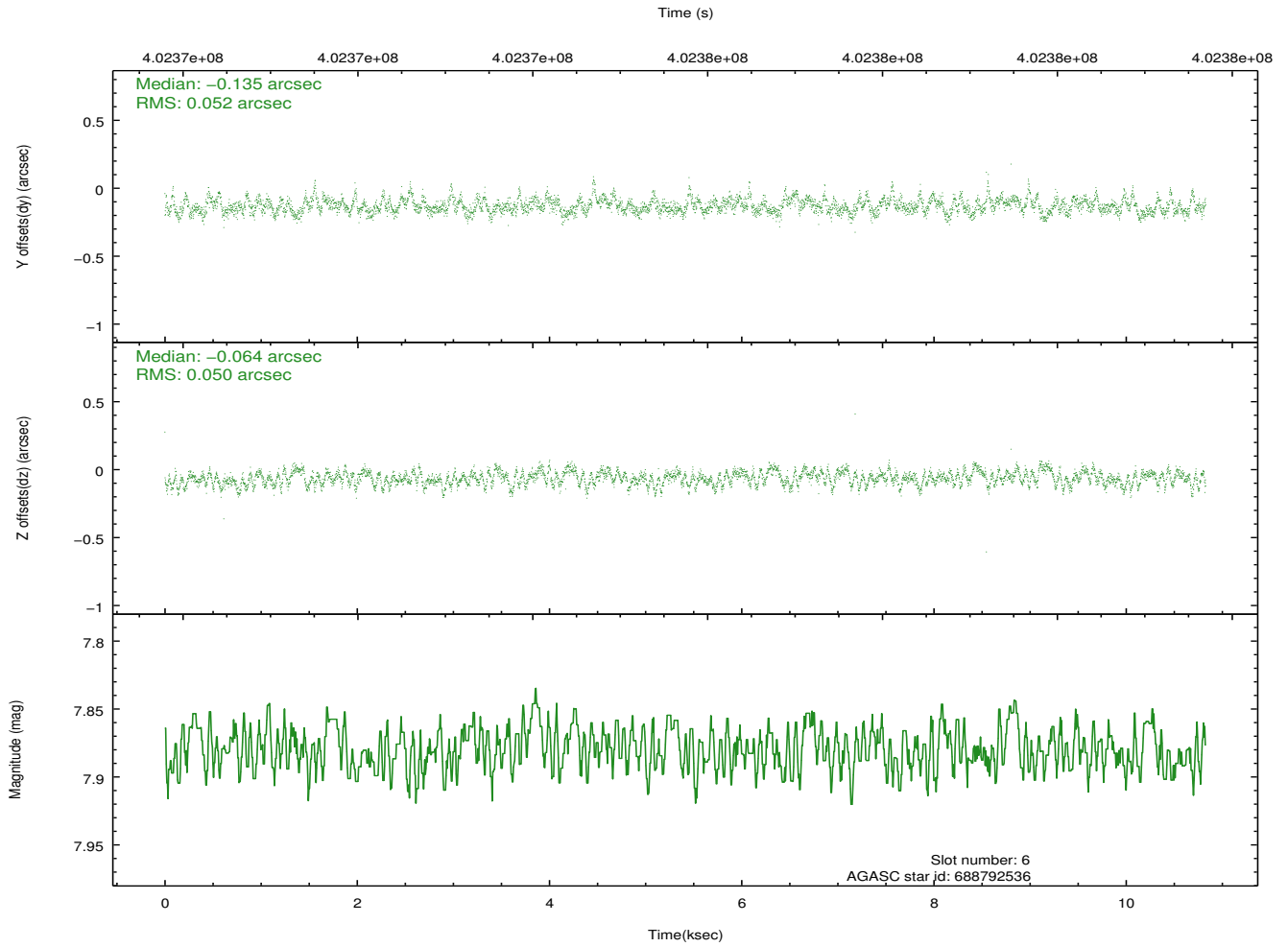
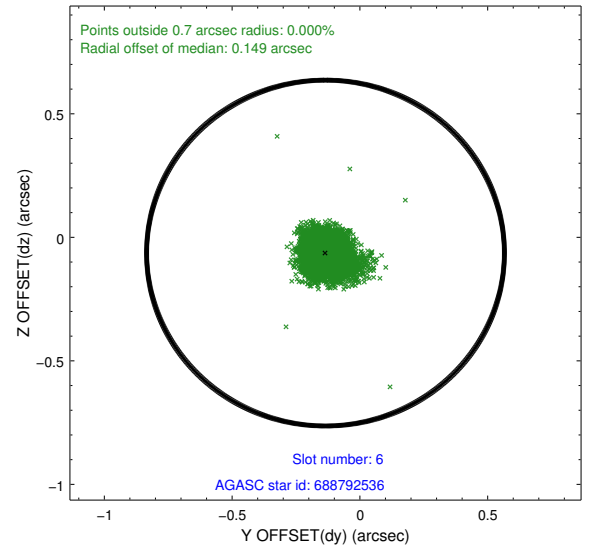
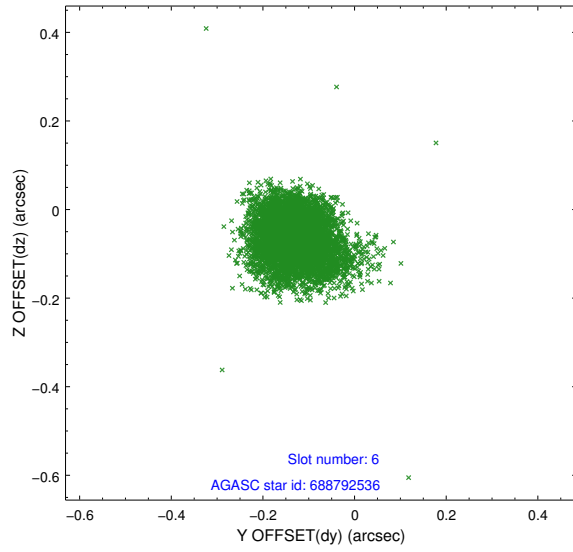
2.4.2 Slot 4



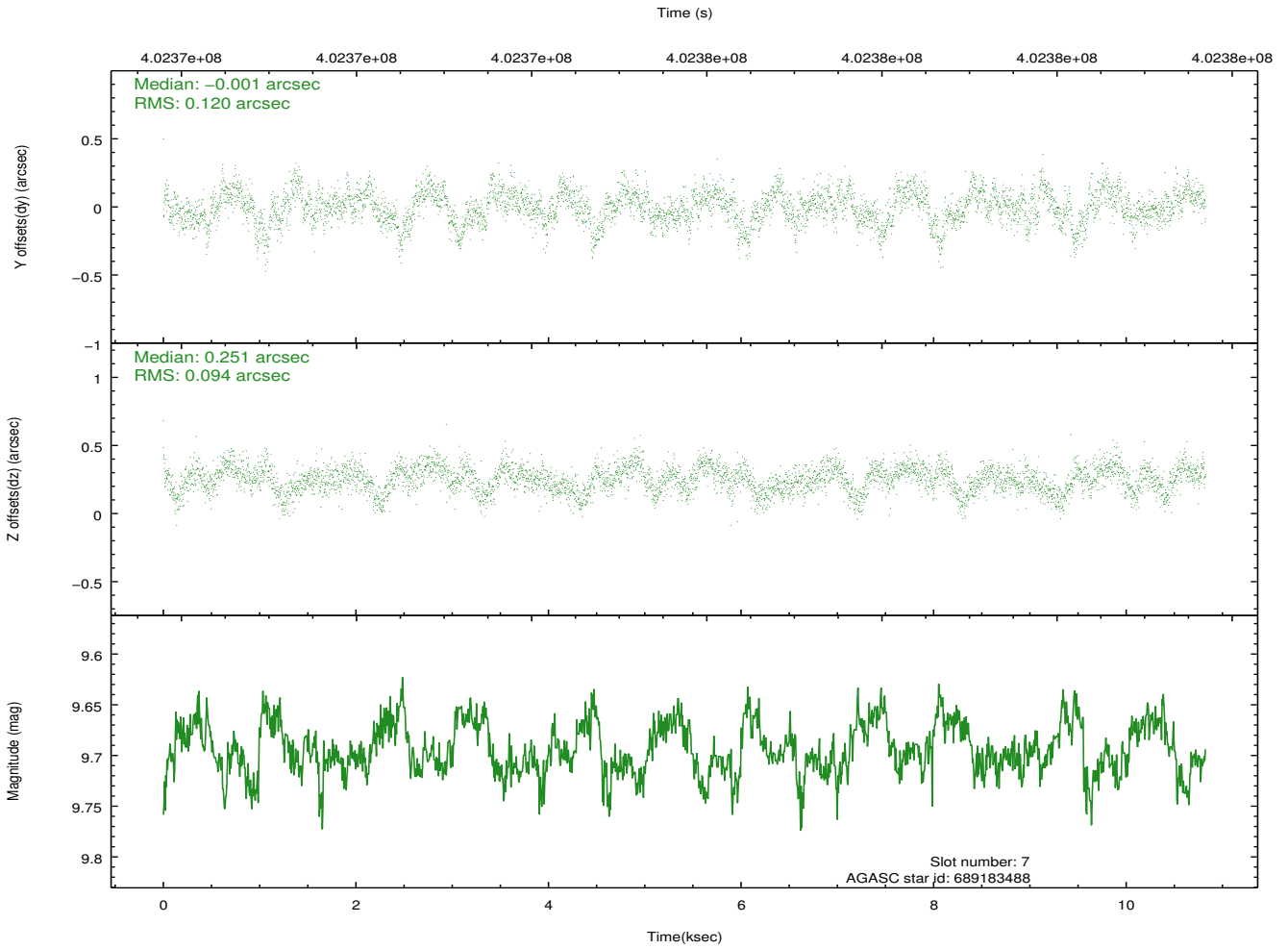
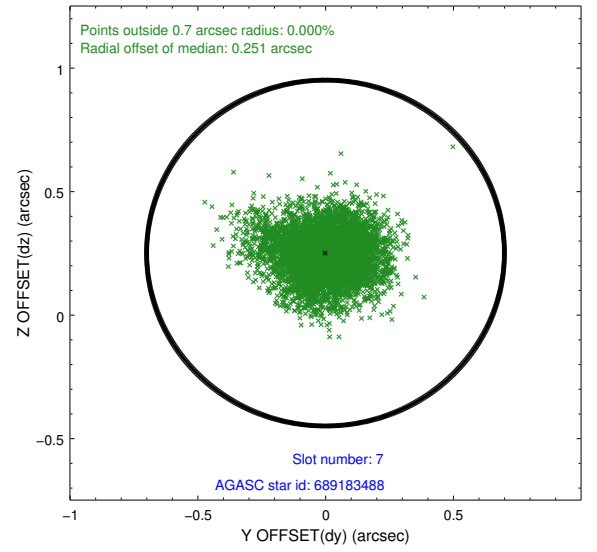
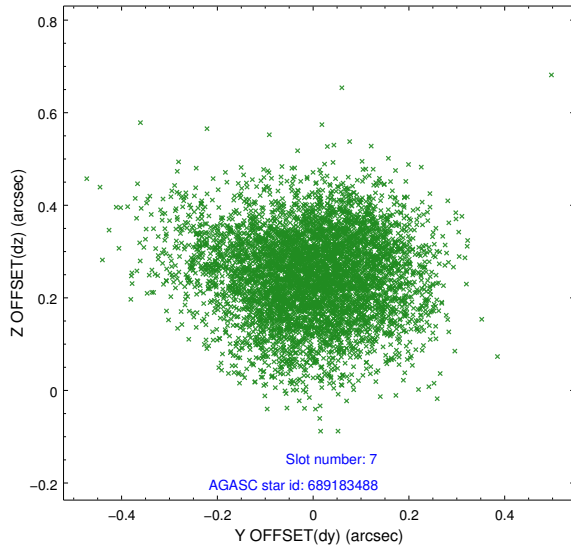
2.4.3 Slot 5



2.4.4 Slot 6

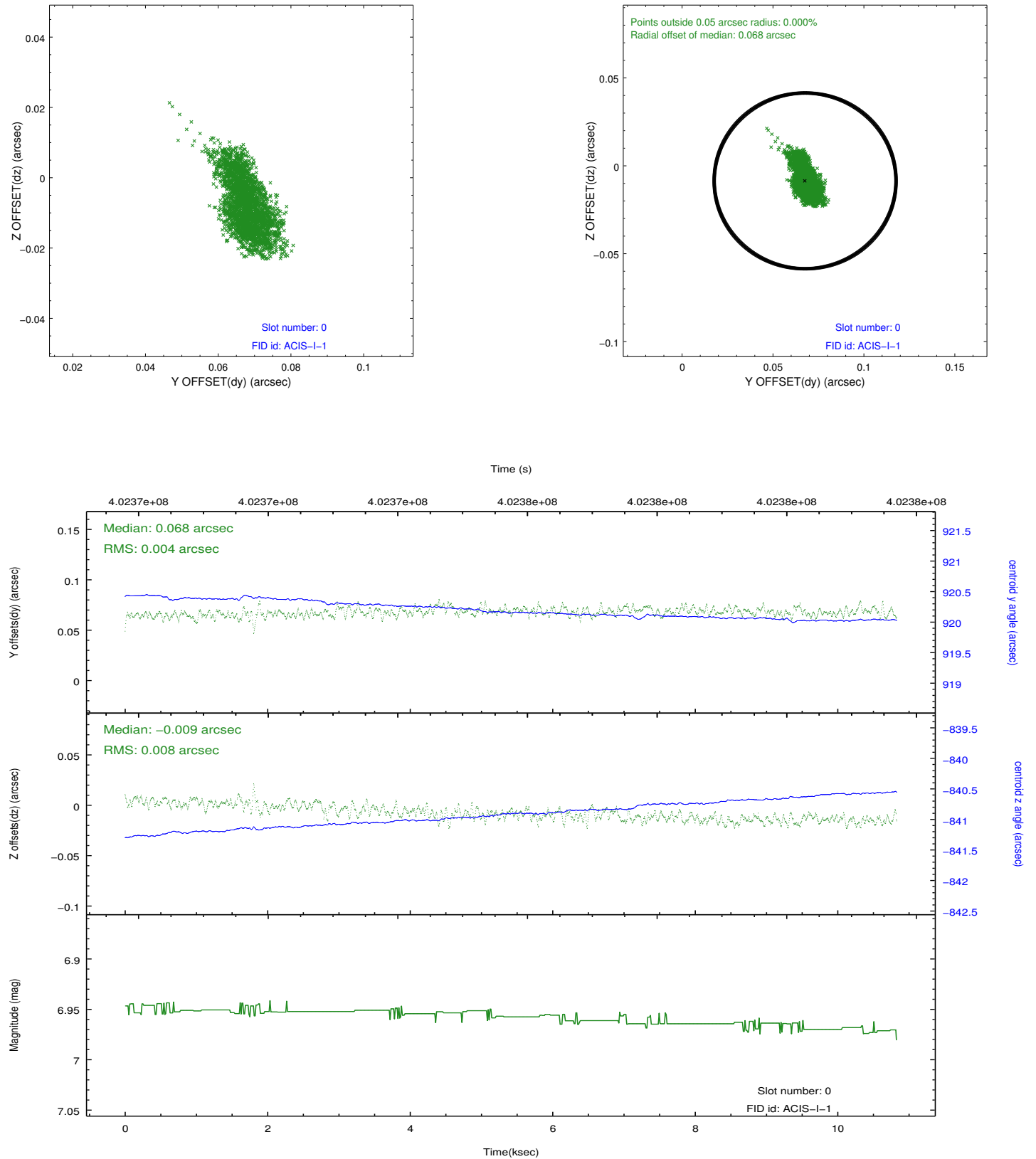


2.4.5 Slot 7

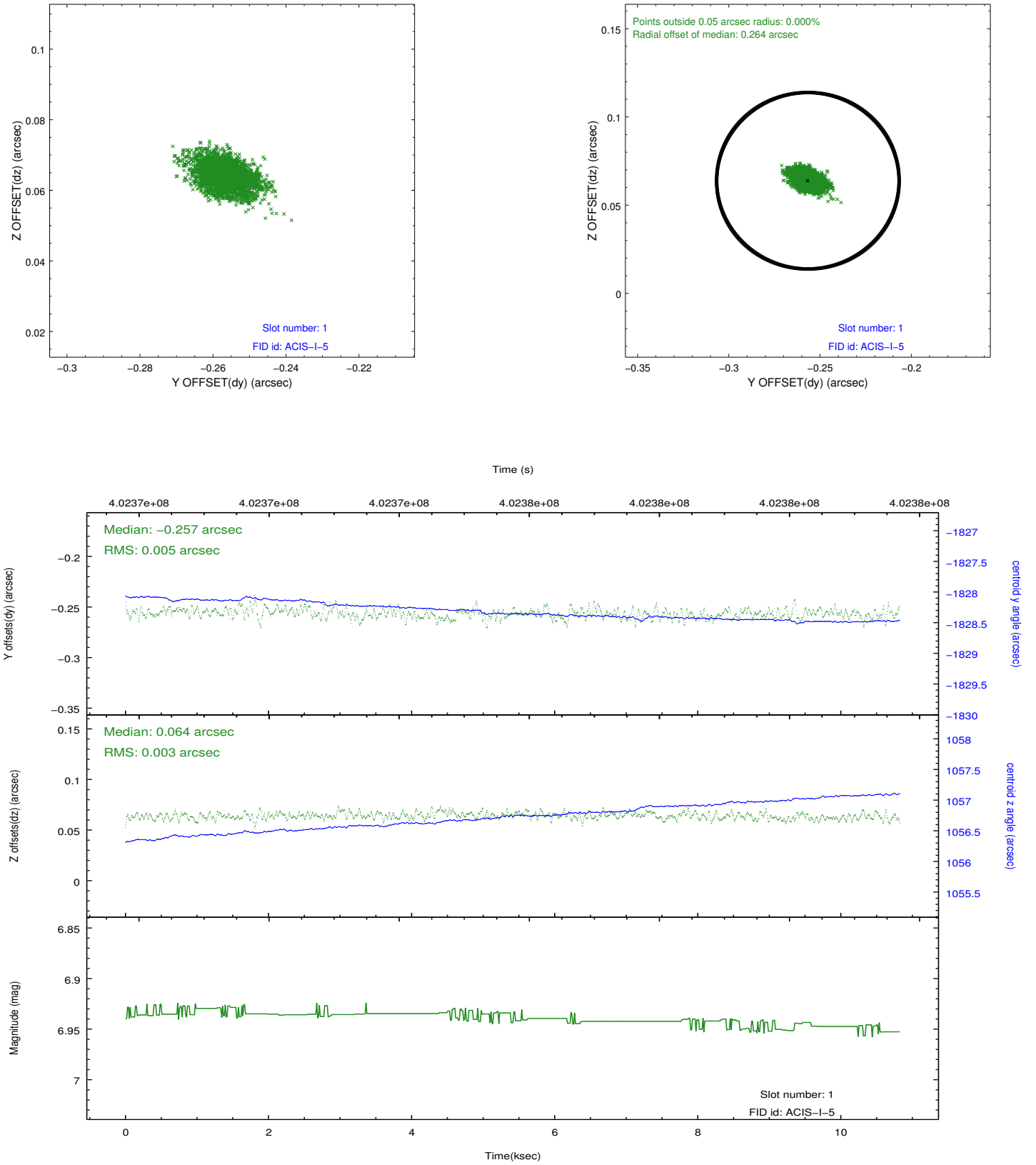


2.5 FID Slots

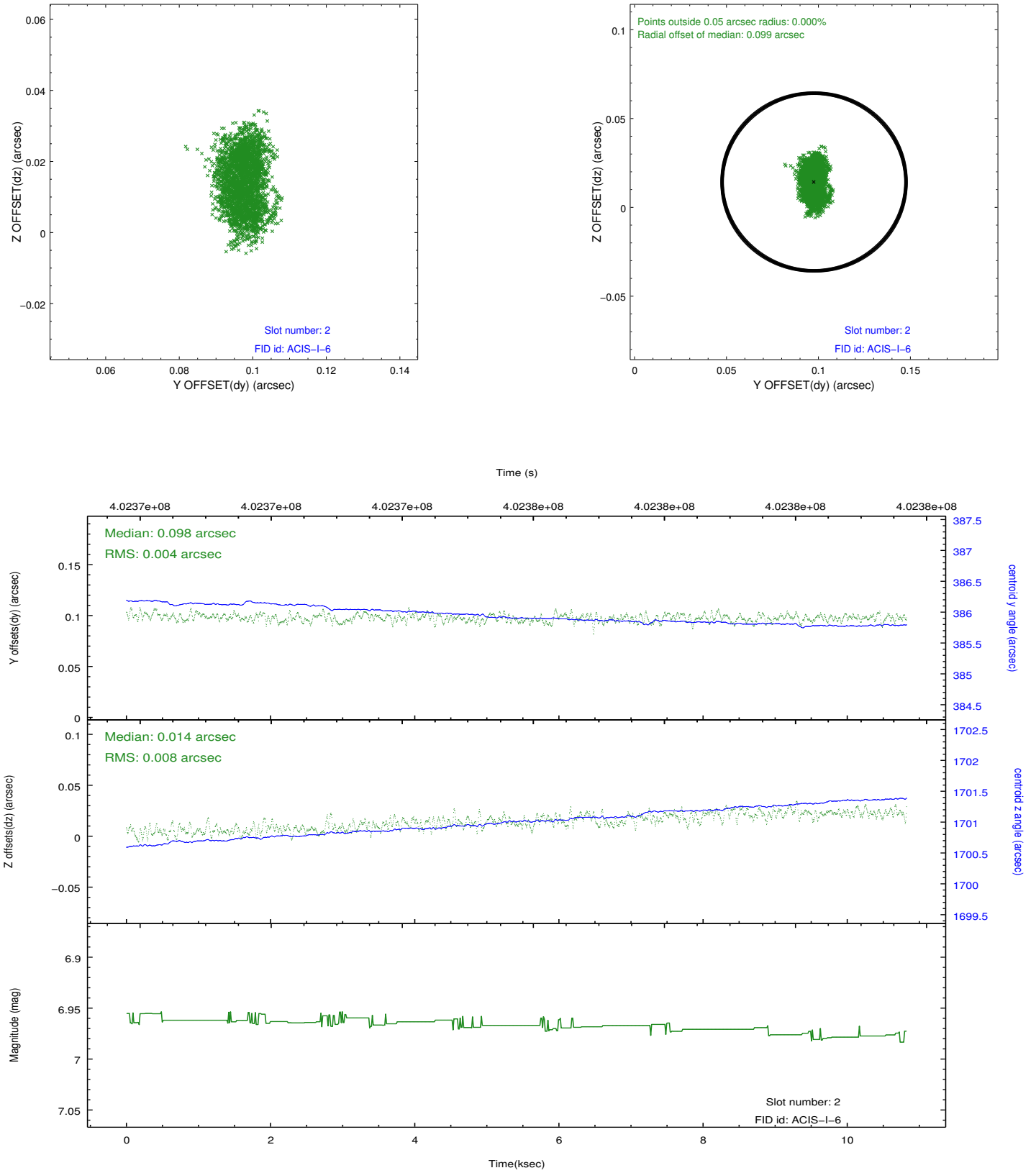
2.5.1 Slot 0



2.5.2 Slot 1



2.5.3 Slot 2



A Summary

A.1 Status

V&V Scientist	Beth Sundheim
V&V Date (YYYY-MM-DD)	2012.07.12
V&V Edition	1
V&V Disposition and Status	OK
V&V Charge Time	10.051942446351

A.2 Comments