

V&V Reference Report

L2 ASCDS Version : 8.4.4

Observation 10868 - L2 Version 2
Chandra X-Ray Center

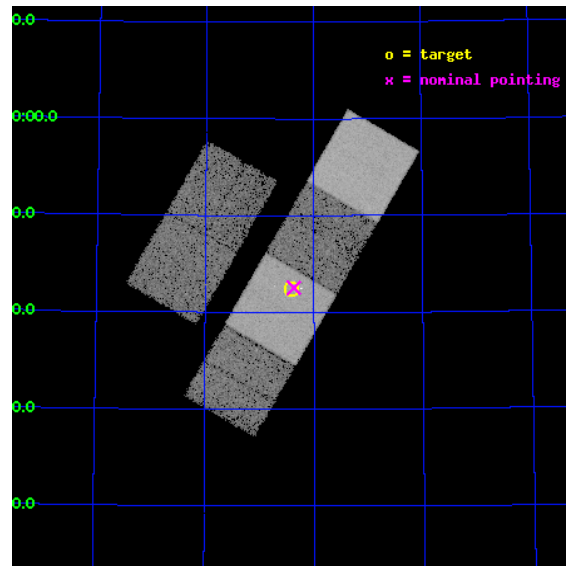
L2 Processing Date : Jun 1 2012

Contents

1	Front	2
2	OBI	3
2.1	OBI	3
2.1.1	Images	3
2.1.2	Bias	3
2.1.3	Parameters	4
2.1.4	Events	4
2.2	Compared Parameters	5
2.3	Aspect	6
2.4	Star Slots	9
2.4.1	Slot 3	9
2.4.2	Slot 4	10
2.4.3	Slot 5	11
2.4.4	Slot 6	12
2.4.5	Slot 7	13
2.5	FID Slots	14
2.5.1	Slot 0	14
2.5.2	Slot 1	15
2.5.3	Slot 2	16
A	Summary	17
A.1	Status	17
A.2	Comments	17

1 Front

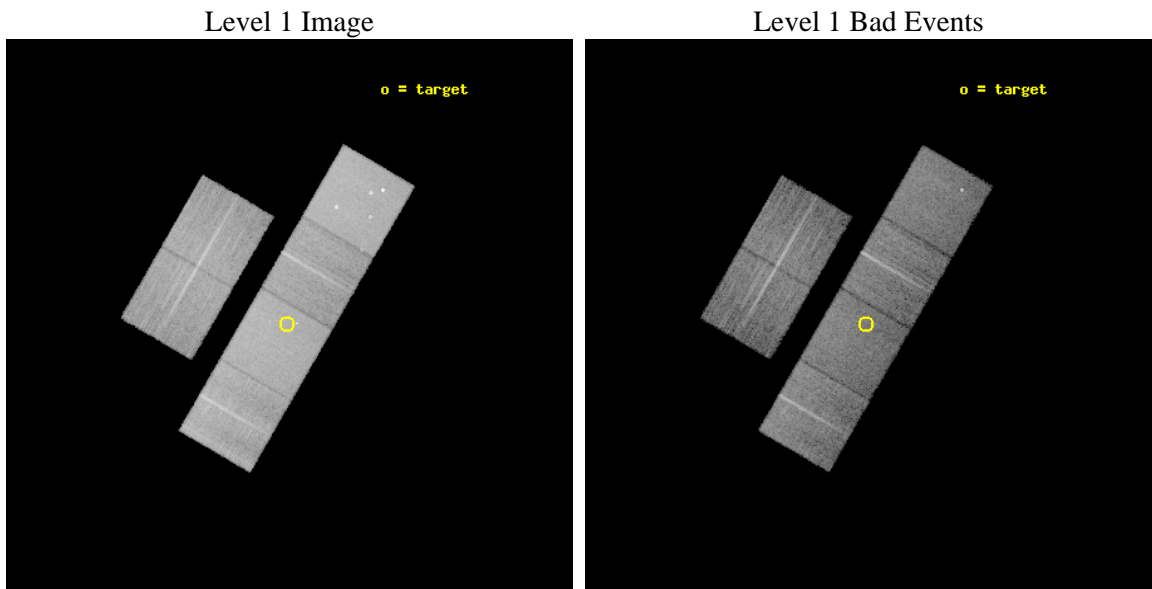
seq_num	600678	Sequence number
obs_id	10868	Observation id
title	Galaxies across the Octaves: A Chandra Legacy Survey of SINGS Galaxies	Proposal title
observer	Dr Leigh Jenkins	Principal investigator
object	DDO 165	Source name
dtcycle	0	
cycle	P	events from which exps? Prim/Second/Both
ra_targ	196.60375	Observer's specified target RA [deg]
dec_targ	67.706944	Observer's specified target Dec [deg]
ra_nom	196.5924102303	Nominal RA [deg]
dec_nom	67.709209633058	Nominal Dec [deg]
roll_nom	120.1671444156	Nominal Roll [deg]
revision	2	Processing version of data
ontime	10719.999960124	Sum of GTIs [s]
livetime	10584.25686582	Livetime [s]
ontime2	10719.999960124	Sum of GTIs [s]
ontime3	10719.999960124	Sum of GTIs [s]
ontime5	10719.999960124	Sum of GTIs [s]
ontime6	10716.75895983	Sum of GTIs [s]
ontime7	10719.999960124	Sum of GTIs [s]
ontime8	10719.999960124	Sum of GTIs [s]
l2events	188931	Number of level 2 events



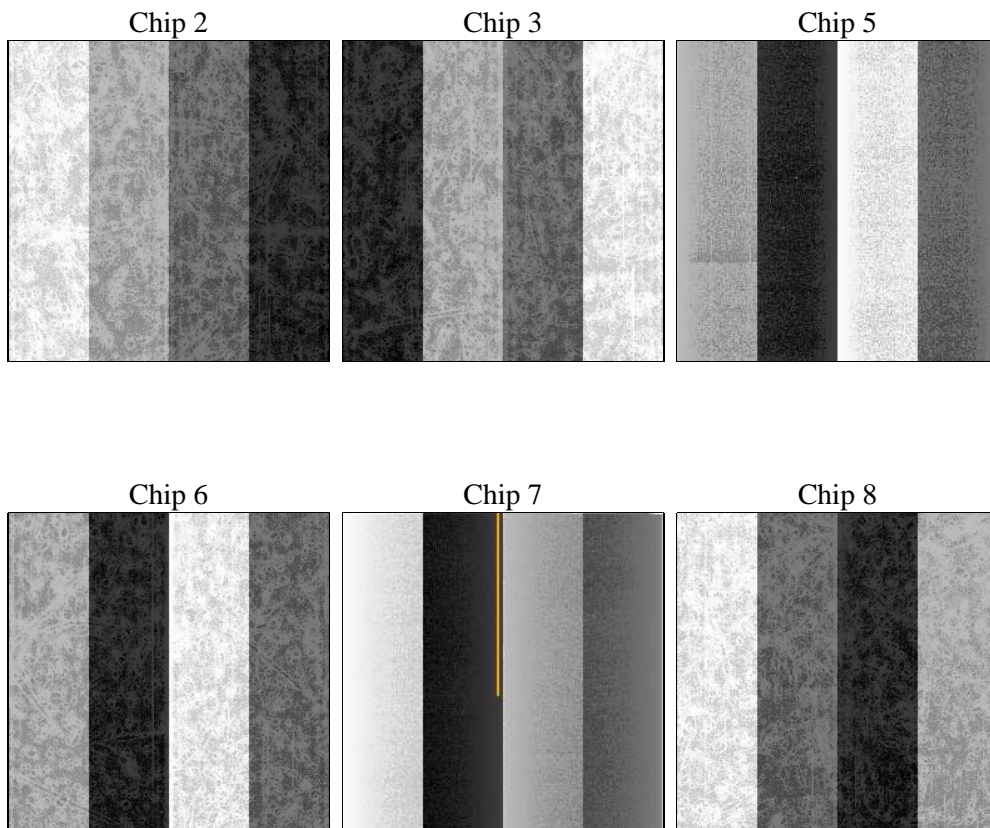
2 OBI

2.1 OBI

2.1.1 Images



2.1.2 Bias



2.1.3 Parameters

obi_num	0	Obi number	sched_exp_time	10771.314000	[s] Scheduled observation exposure time
ascdsver	8.4.4	Processing system revision	ontime	10719.999960124	Sum of GTIs [s]
caldsver	4.4.9	 	ontime2	10719.999960124	Sum of GTIs [s]
date	2012-06-01T10:29:22	Date and time of file creation	ontime3	10719.999960124	Sum of GTIs [s]
revision	2	Processing version of data	ontime5	10719.999960124	Sum of GTIs [s]
			ontime6	10716.75895983	Sum of GTIs [s]
			ontime7	10719.999960124	Sum of GTIs [s]
			ontime8	10719.999960124	Sum of GTIs [s]
			l1events	806066	Number of level 1 events

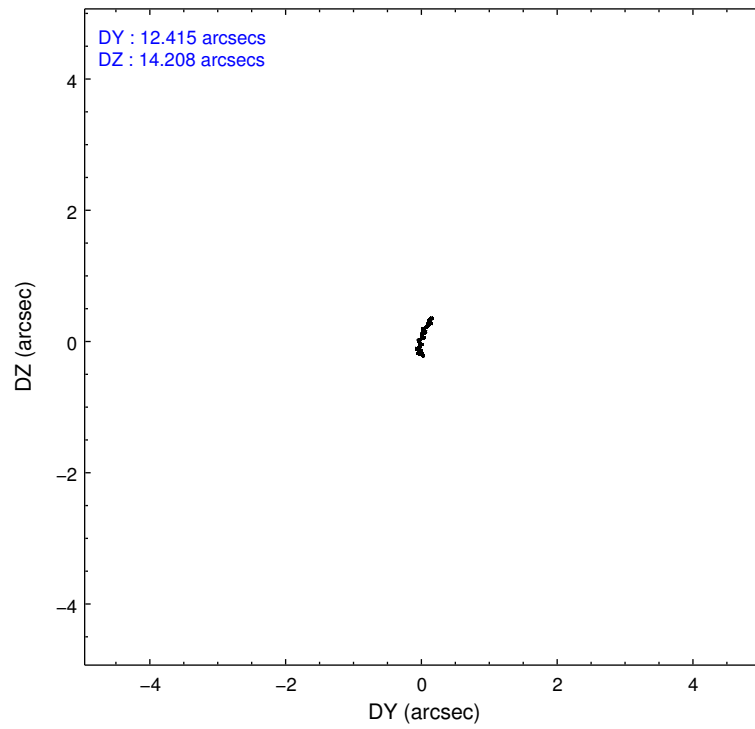
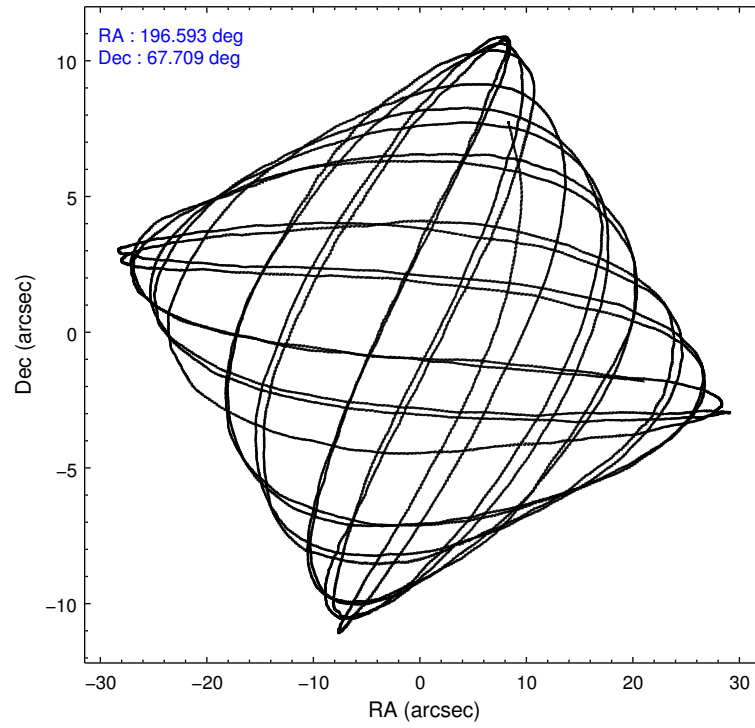
2.1.4 Events

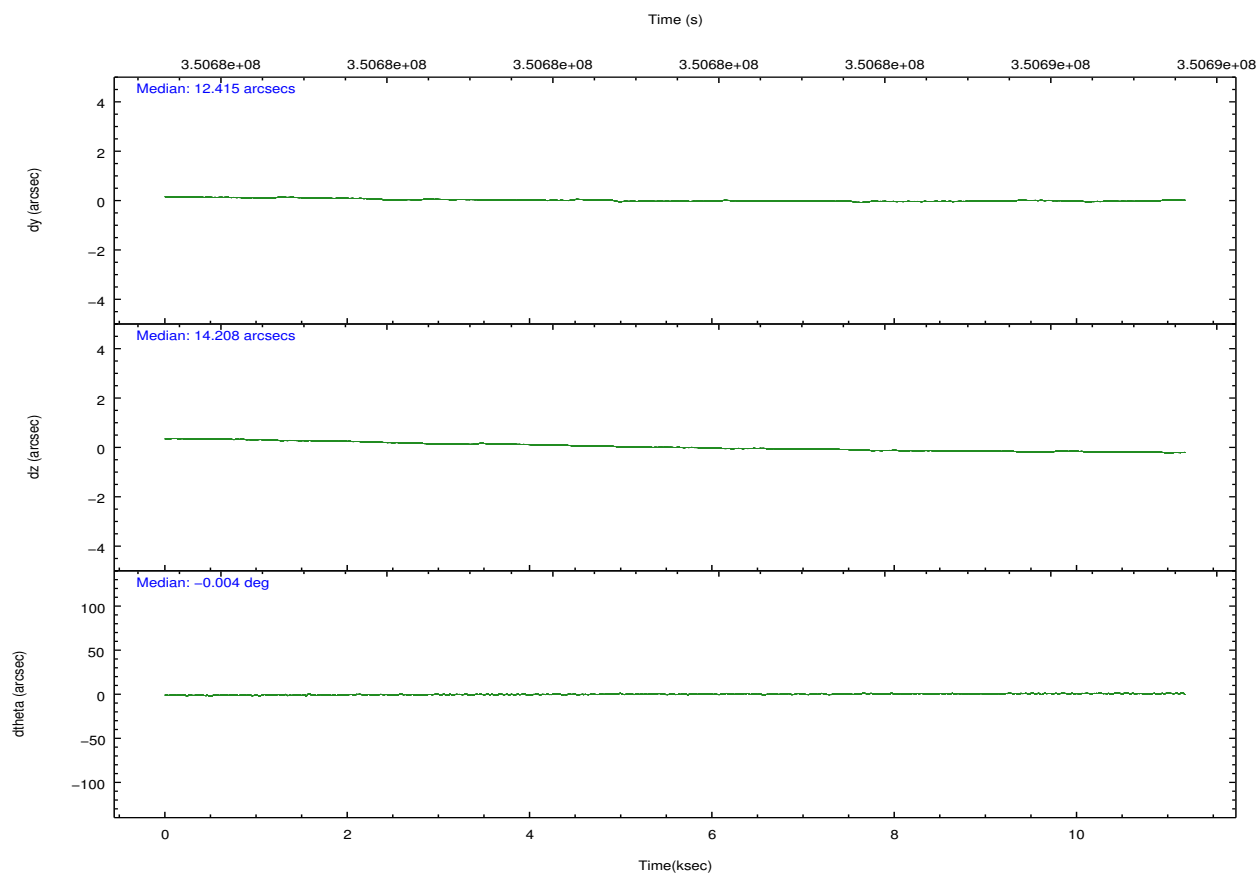
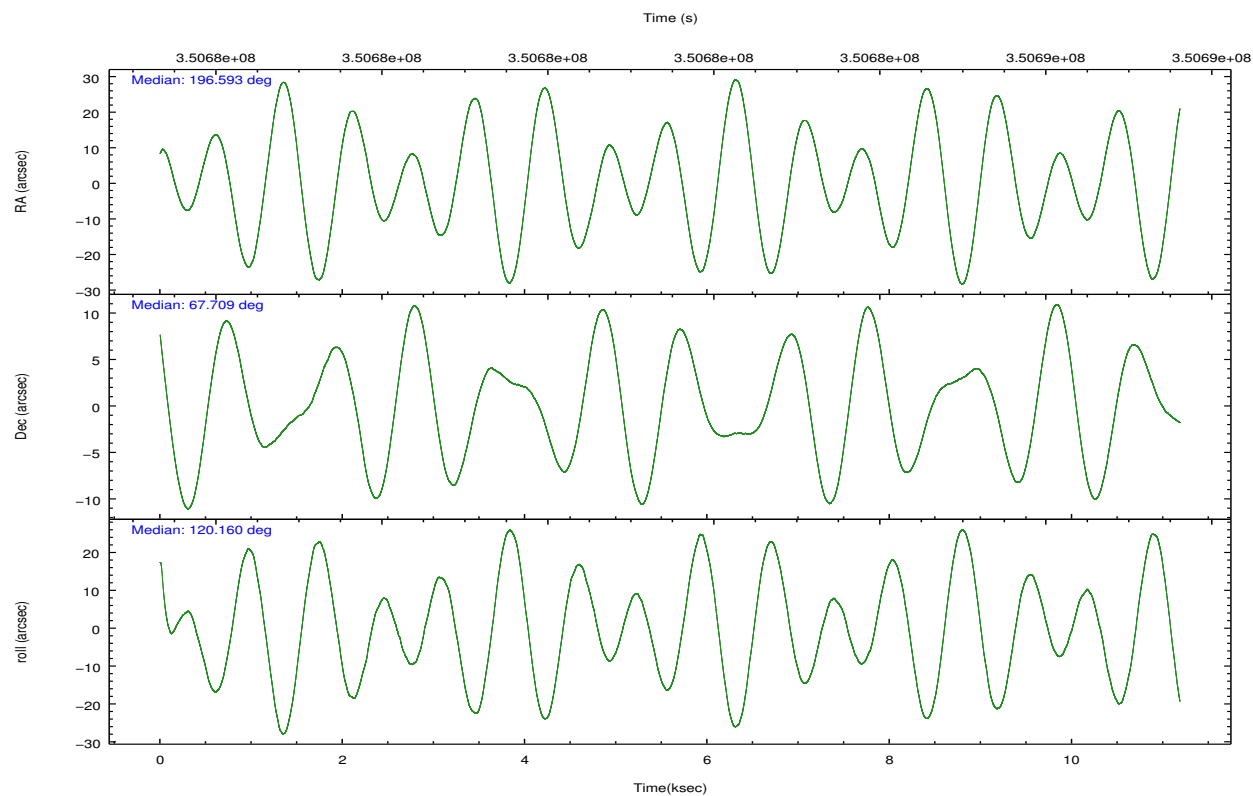
	ccd 2	ccd 3	ccd 5	ccd 6	ccd 7	ccd 8		ccd 2	ccd 3	ccd 5	ccd 6	ccd 7	ccd 8
level 1 events	112695	107197	175628	111498	156205	142843	grade 0 events	5431	5928	8549	5680	5724	10671
rejected events	99733	93857	93160	97407	90496	108777		4%	5%	4%	5%	3%	7%
rejected %	88%	87%	53%	87%	57%	76%	grade 1 events	80	72	401	77	163	123
								0%	0%	0%	0%	0%	0%
							grade 2 events	2771	2660	25807	3077	13585	7721
								2%	2%	14%	2%	8%	5%
							grade 3 events	1189	1185	2896	1254	5515	3595
								1%	1%	1%	1%	3%	2%
							grade 4 events	1262	1250	2848	1322	5539	3393
								1%	1%	1%	1%	3%	2%
							grade 5 events	4685	5092	12426	5355	14647	7105
								4%	4%	7%	4%	9%	4%
							grade 6 events	2310	2321	42386	2761	35364	8688
								2%	2%	24%	2%	22%	6%
							grade 7 events	94967	88689	80315	91972	75668	101547
								84%	82%	45%	82%	48%	71%

2.2 Compared Parameters

Parameter	Planned	Actual	Parameter	Planned	Actual
Instrument	ACIS	ACIS	Obspar format version number	7	7
Detector	ACIS-235678	ACIS-235678	Obspar file type	PREDICTED	ACTUAL
Grating	NONE	NONE	Obspar update status	NONE	UPDATED
Data mode	FAINT	FAINT	CCD I0 on	N	N
Observation mode	POINTING	POINTING	CCD I1 on	N	N
[deg] Pointing RA	196.655460	196.592410230303	CCD I2 on	O1	Y
[deg] Pointing Dec	67.695936	67.70920963305802	CCD I3 on	O2	Y
[deg] Pointing Roll	119.952154	120.1671444156046	CCD S0 on	N	N
[mm] SIM focus pos	-0.684267	-0.6828225247311905	CCD S1 on	Y	Y
[mm] SIM defocus	0	0.001444936568705701	CCD S2 on	Y	Y
[mm] SIM translation stage pos	-190.132523	-190.145094680475	CCD S3 on	Y	Y
[mm] SIM translation stage offset	0	0.01257209746719923	CCD S4 on	Y	Y
[s] Observation start time (MET)	350676291.184000	350675212.07197	CCD S5 on	N	N
Observation start date	2009-02-10T18:03:45	2009-02-10T17:46:52	Number of optional ACIS chips dropped	0	0
[s] Observation end time (MET)	350687062.184000	350687288.62257	On-chip summing requested	N	N
Observation end date	2009-02-10T21:03:16	2009-02-10T21:08:08	Subarray requested	NONE	NONE
Read mode	TIMED	TIMED	Alternating exposures requested	N	N
			[s] Primary exposure time	0.000000	3.2

2.3 Aspect



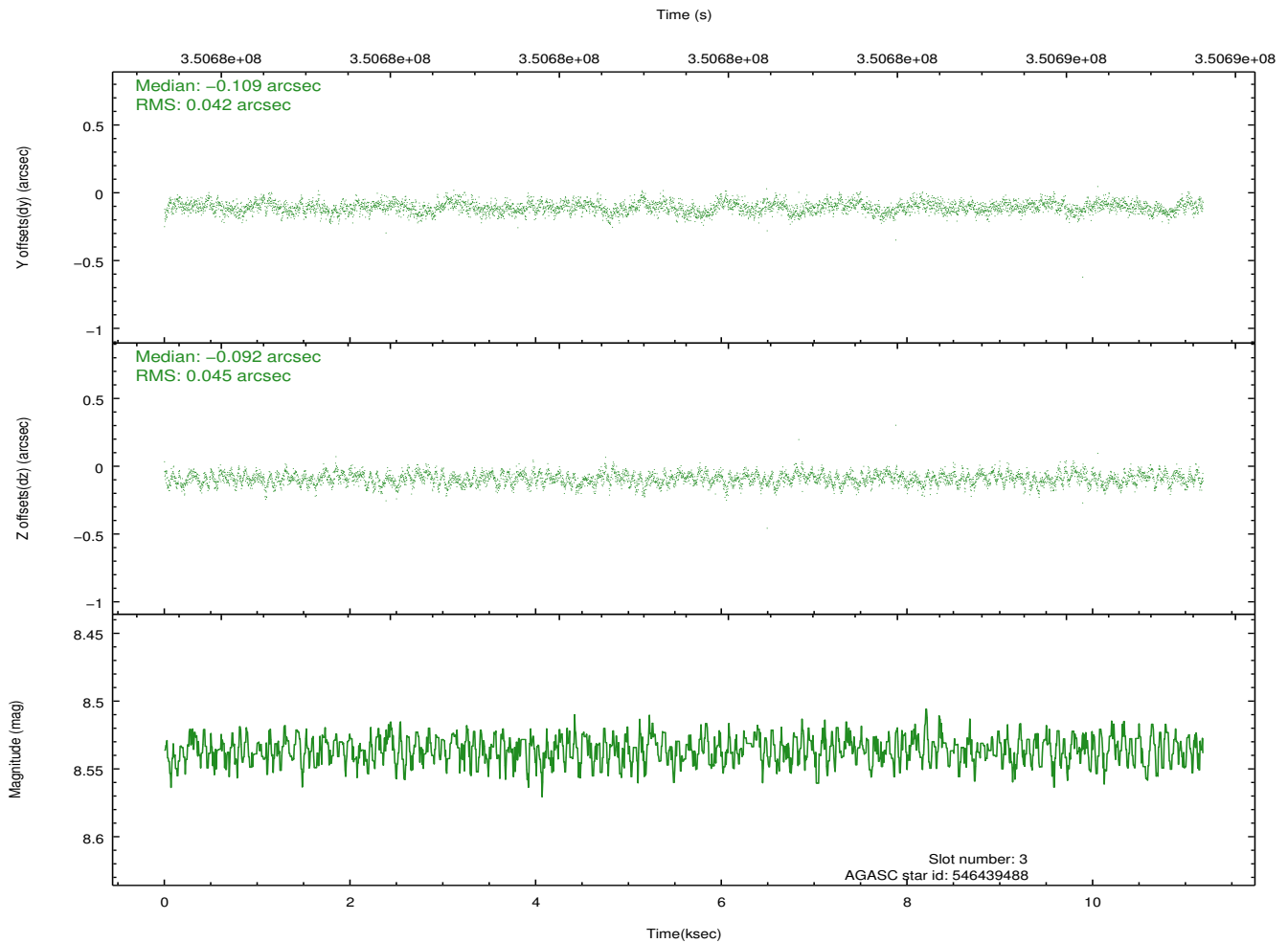
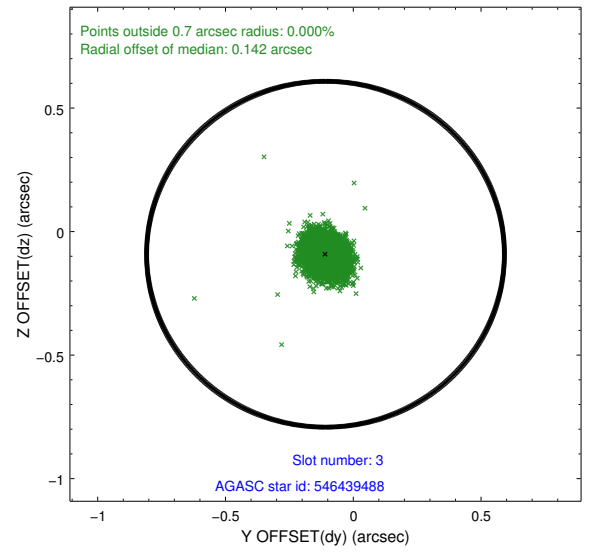
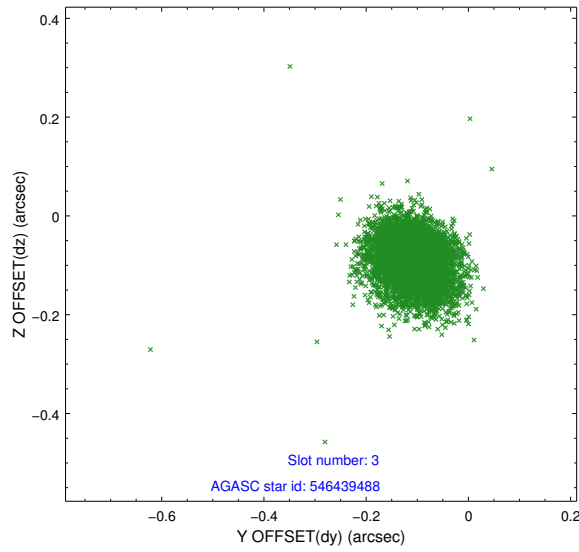


Slot Statistics

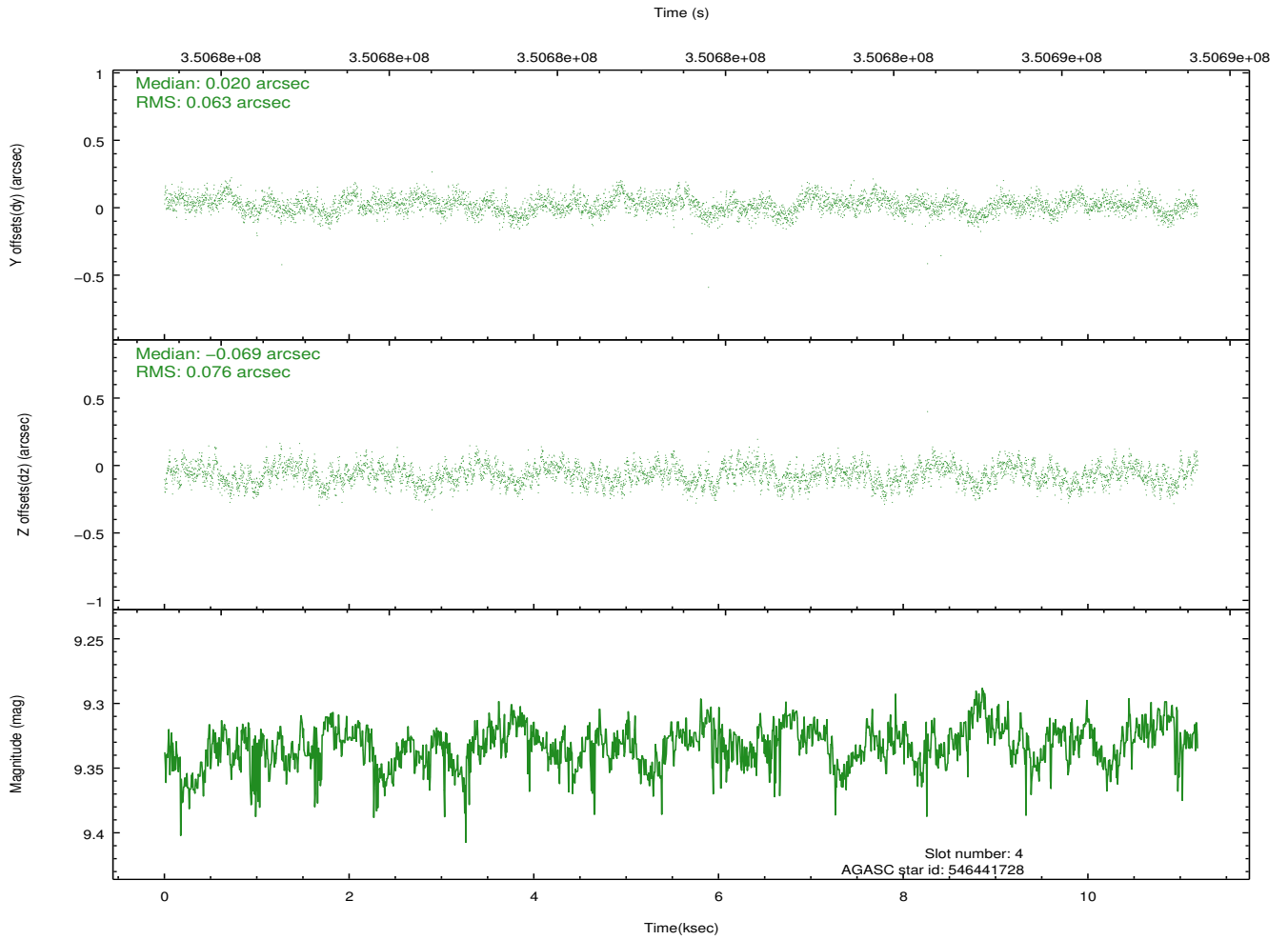
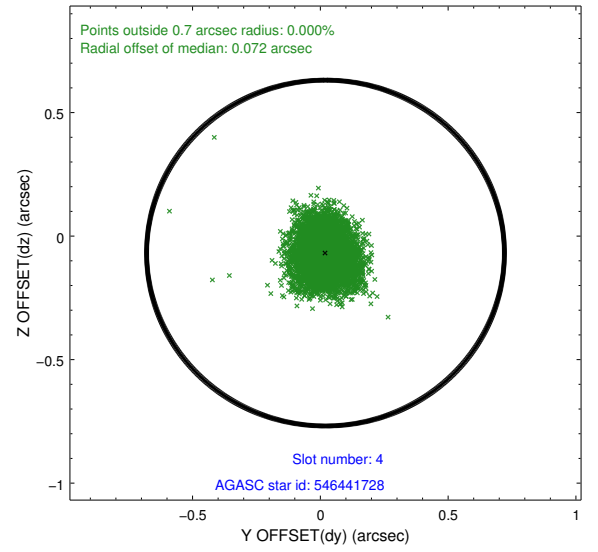
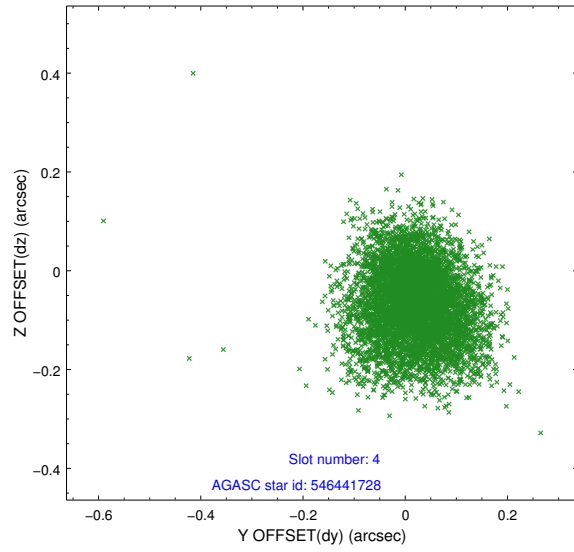
slot	status	id	mag	n_pts	med_dy	med_dz	dr1	dr2	ra	dec	mean_y	mean_z
0	FID	ACIS-S-2	6.91	2728	-0.030	-0.024	0.008	0.013	0.000000	0.000000	-765.35	-1735.52
1	FID	ACIS-S-4	6.99	2728	0.122	0.021	0.008	0.014	0.000000	0.000000	2147.86	172.55
2	FID	ACIS-S-5	7.03	2728	-0.123	0.012	0.007	0.012	0.000000	0.000000	-1817.71	166.71
3	GUIDE	546439488	8.54	5456	-0.109	-0.092	0.064	0.105	195.857640	67.356703	-500.28	1564.12
4	GUIDE	546441728	9.33	5447	0.020	-0.069	0.105	0.168	196.111276	67.333453	-750.78	1304.35
5	GUIDE	576847928	9.19	5451	0.079	-0.021	0.099	0.163	196.187152	67.527173	-202.61	860.67
6	GUIDE	576848952	8.93	5451	0.186	0.200	0.085	0.138	198.276729	67.557938	-1517.06	-1696.69
7	GUIDE	546440816	6.76	5455	-0.179	-0.013	0.055	0.086	198.250805	67.309688	-2285.54	-1238.83

2.4 Star Slots

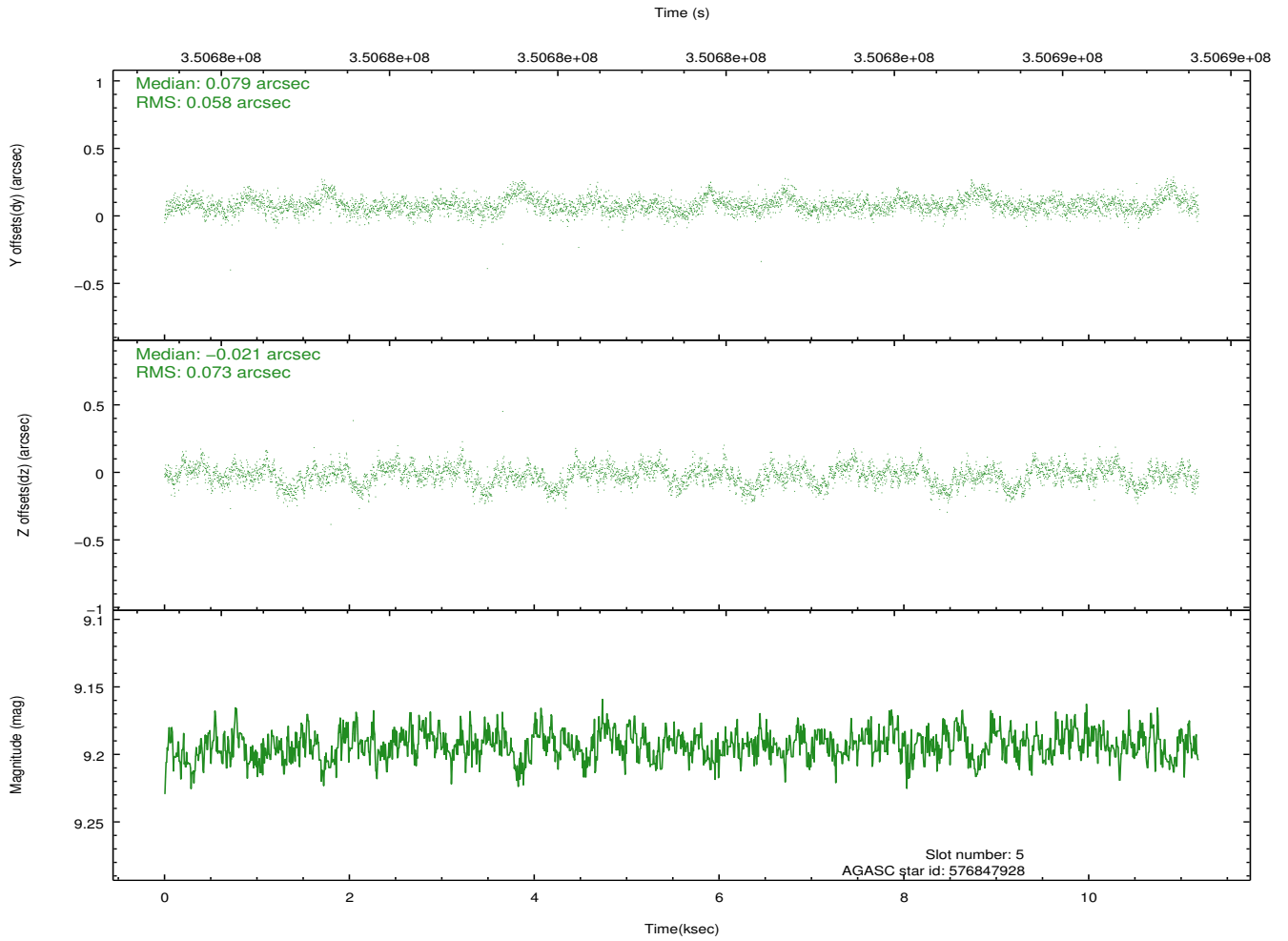
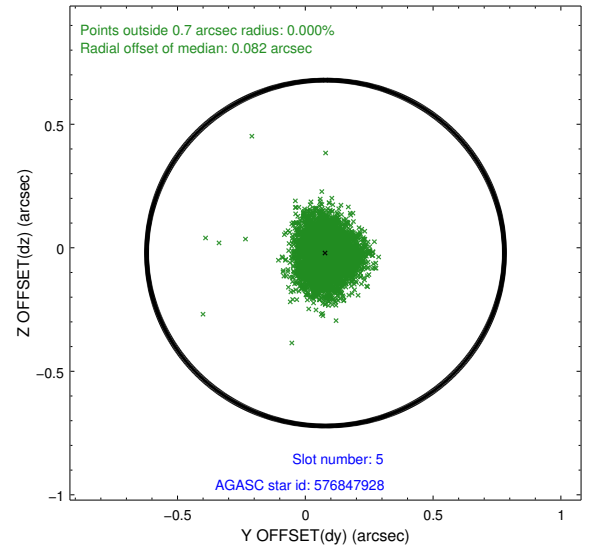
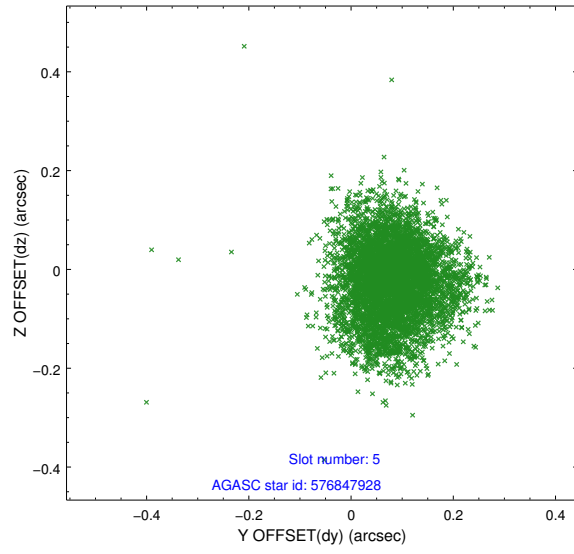
2.4.1 Slot 3



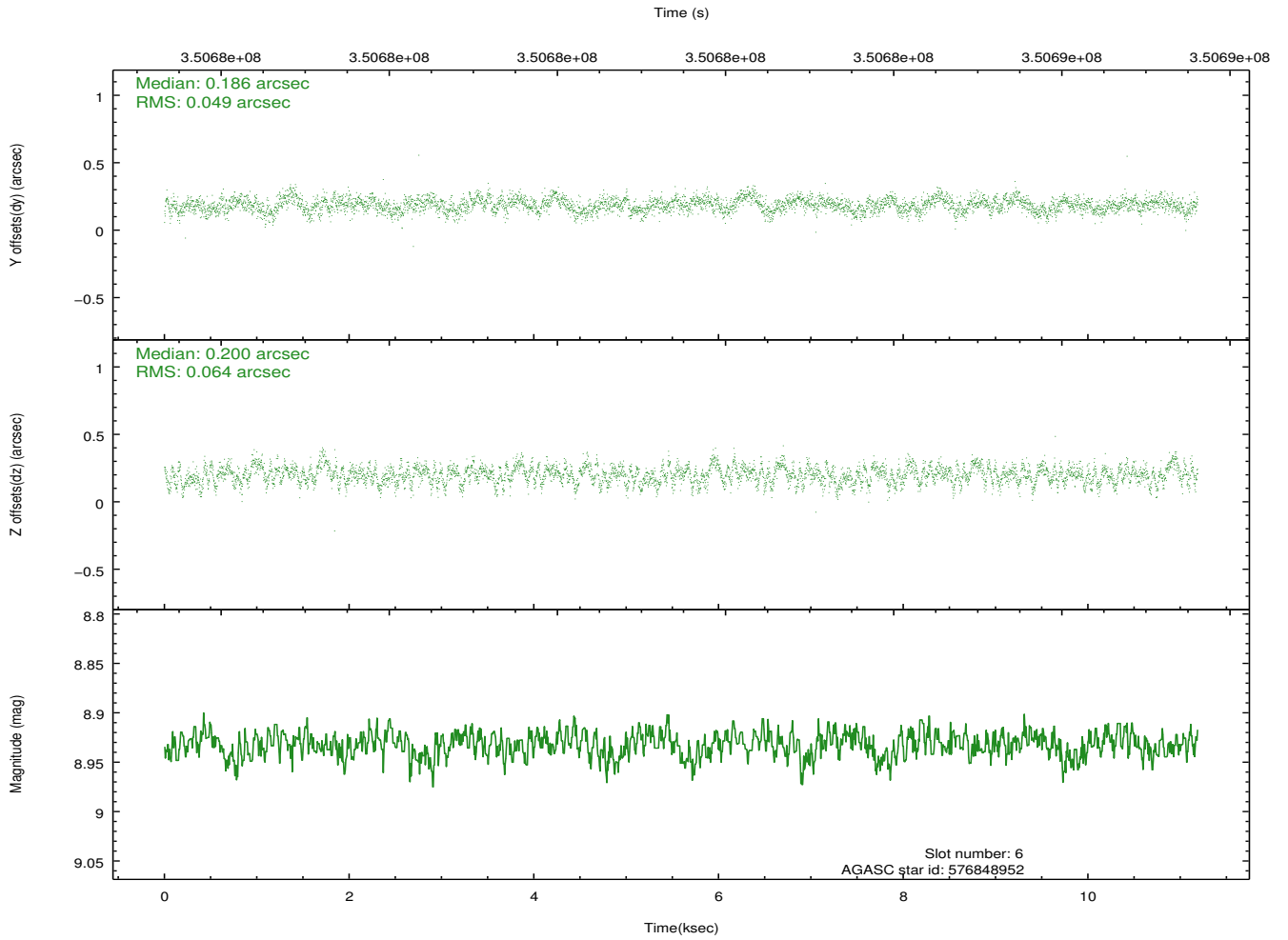
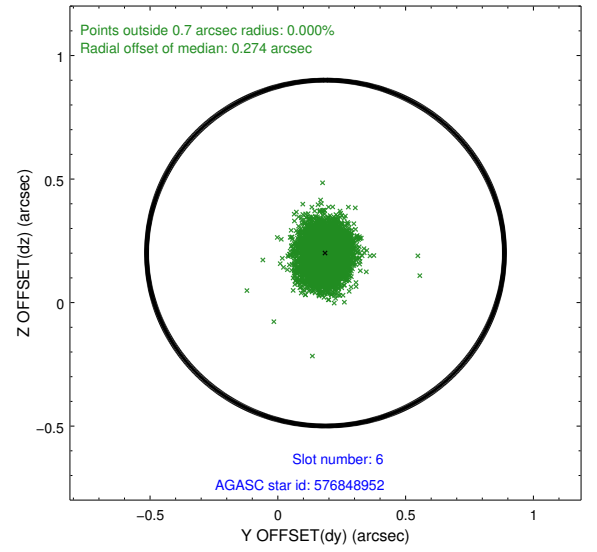
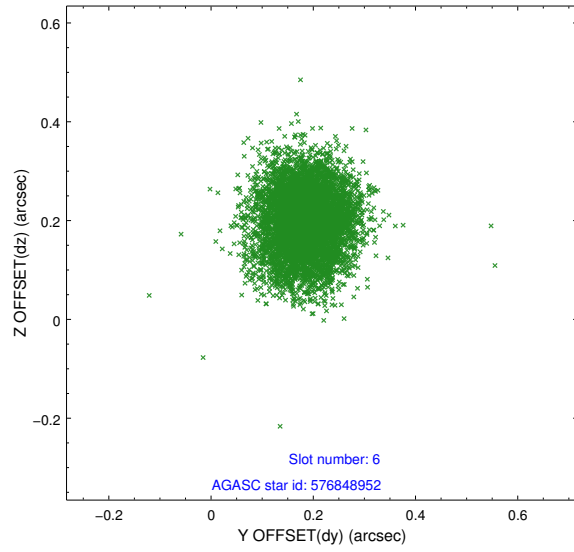
2.4.2 Slot 4



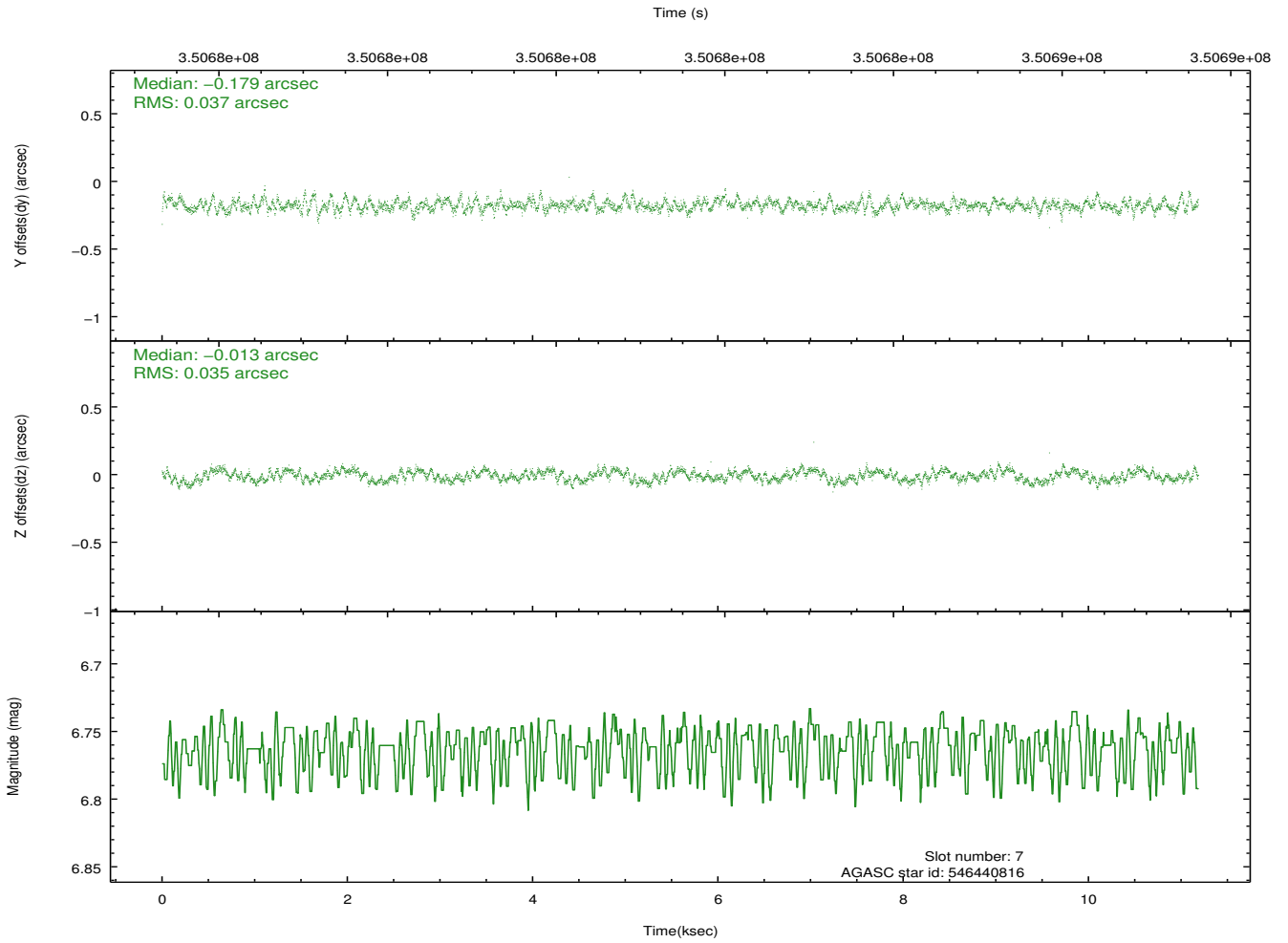
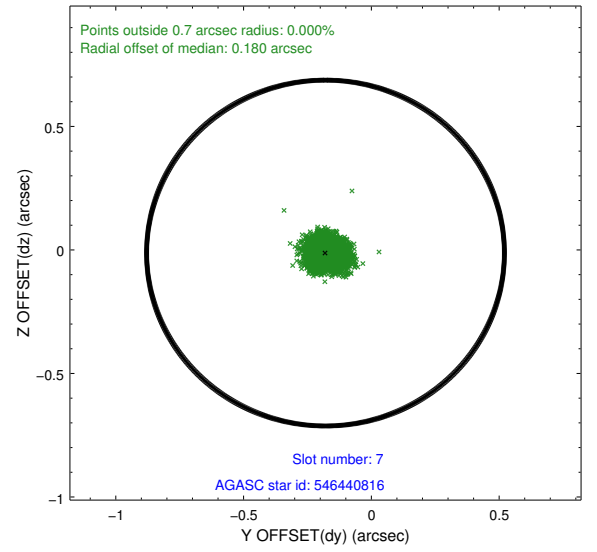
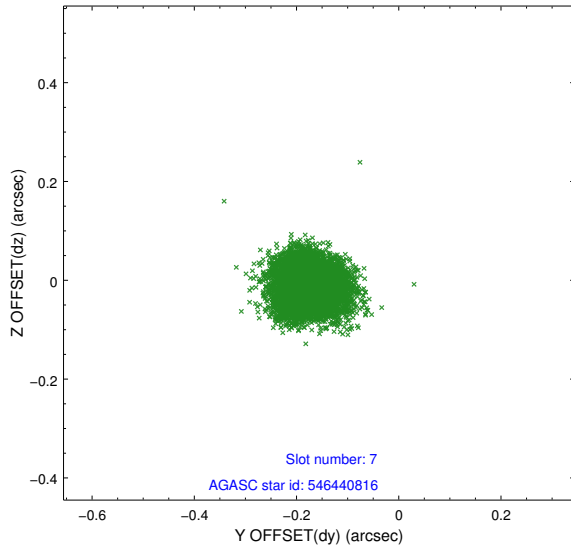
2.4.3 Slot 5



2.4.4 Slot 6

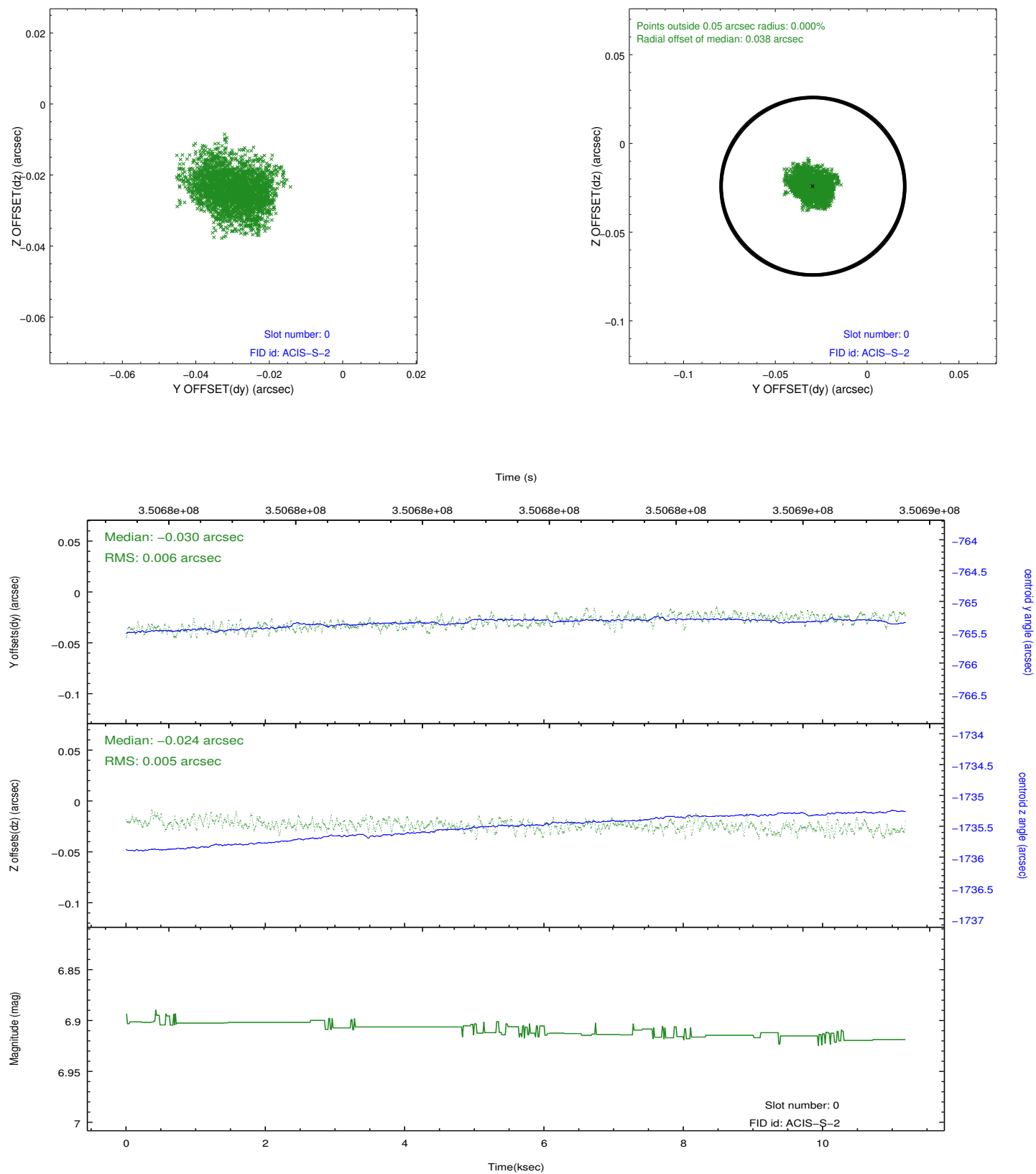


2.4.5 Slot 7

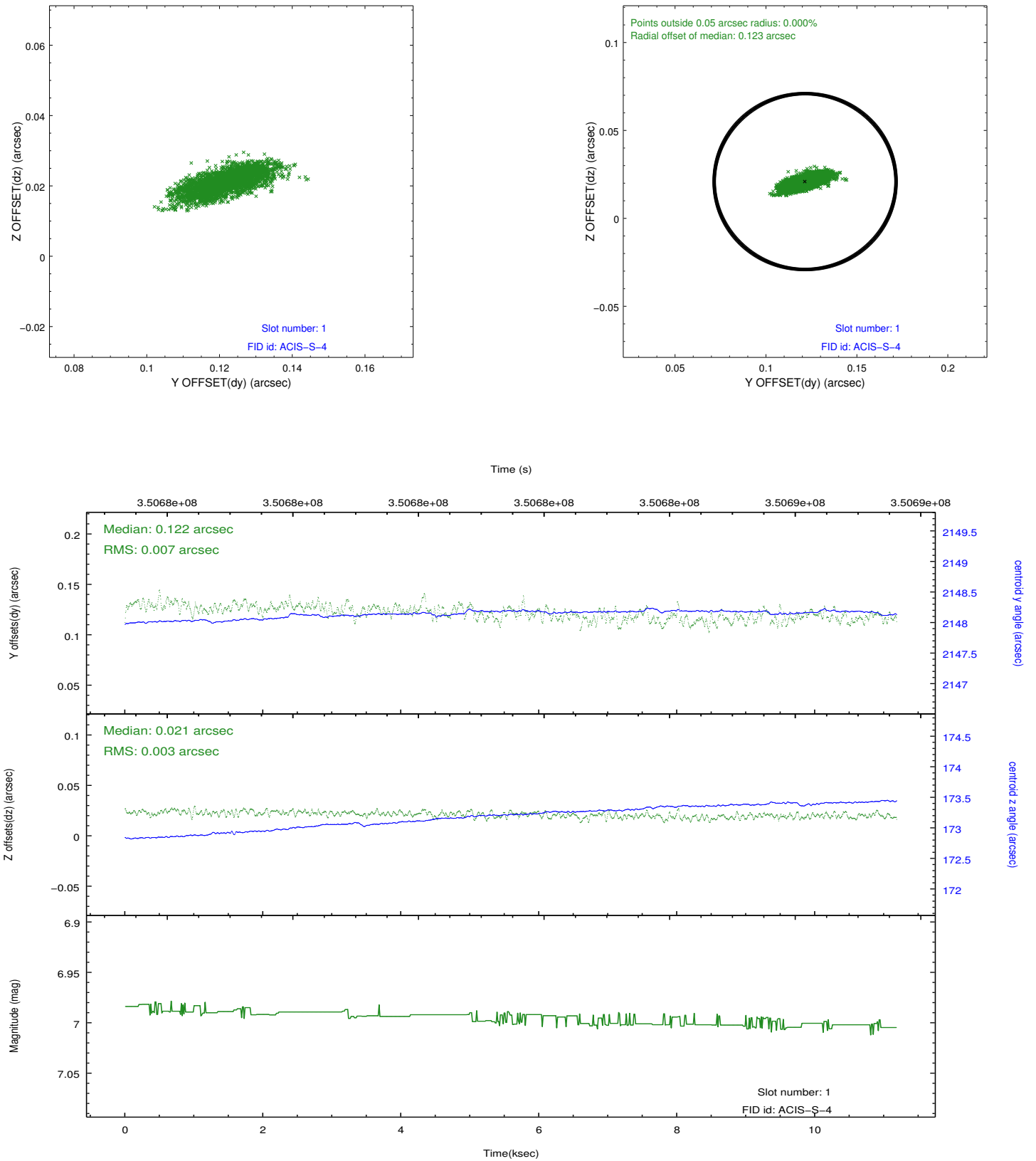


2.5 FID Slots

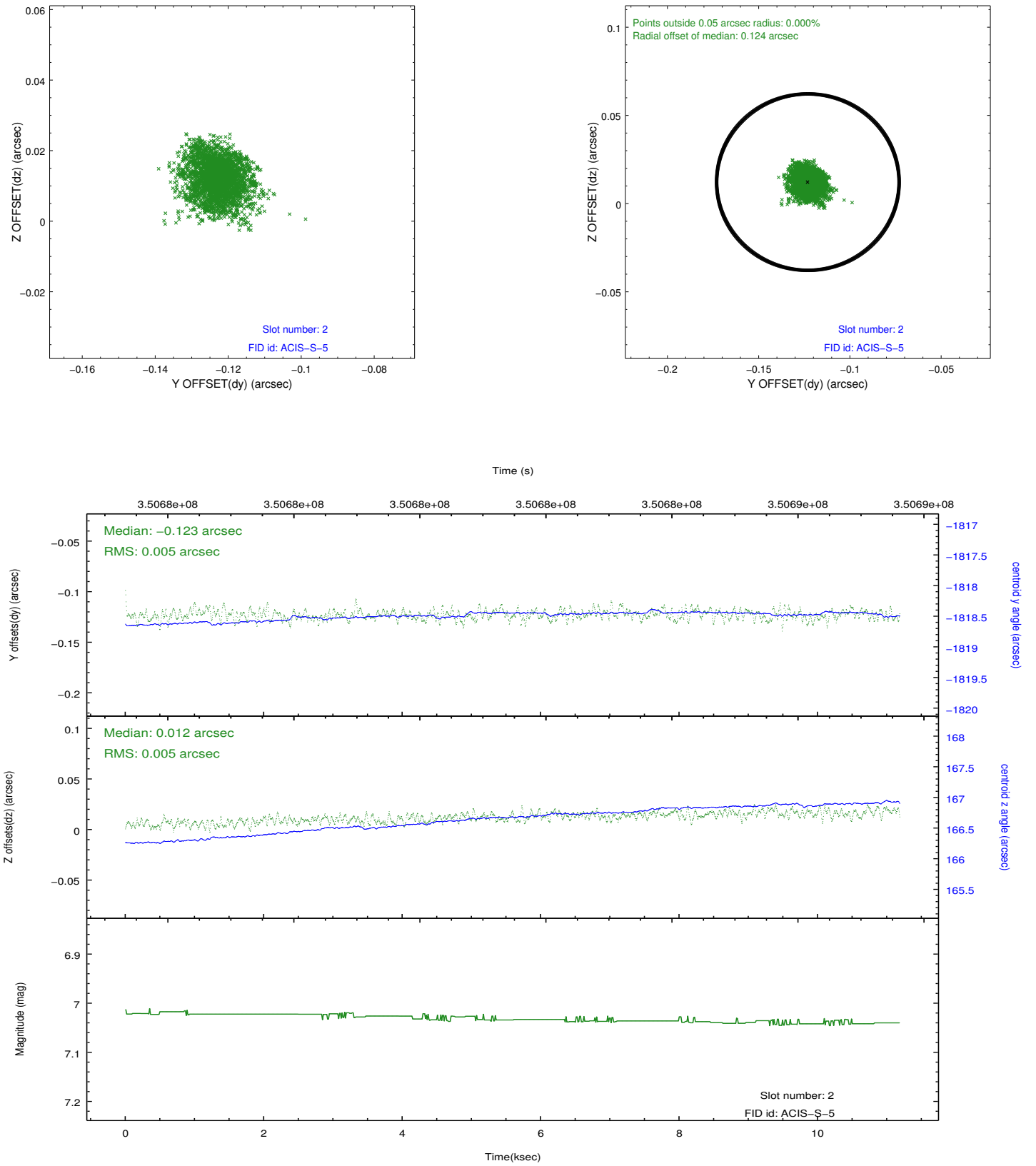
2.5.1 Slot 0



2.5.2 Slot 1



2.5.3 Slot 2



A Summary

A.1 Status

V&V Scientist	Jen Lauer
V&V Date (YYYY-MM-DD)	2012.06.06
V&V Edition	1
V&V Disposition and Status	OK
V&V Charge Time	10.7199999

A.2 Comments