

V&V Reference Report

L2 ASCDS Version : 8.4.5

Observation 10408 - L2 Version 3
Chandra X-Ray Center

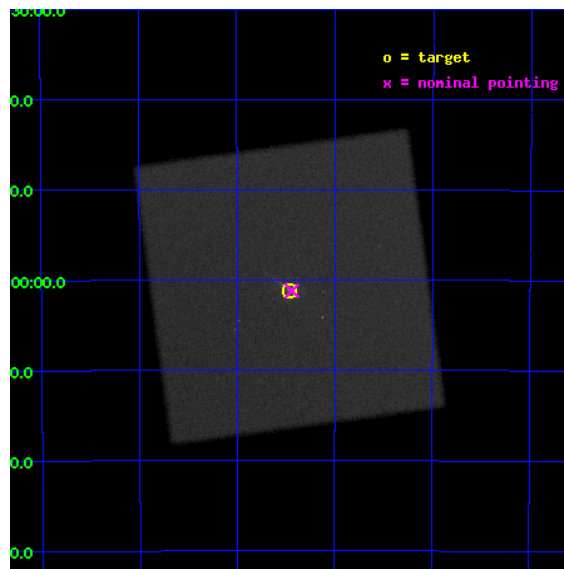
L2 Processing Date : Aug 13 2012

Contents

1	Front	2
2	OBI	3
2.1	OBI	3
2.1.1	Images	3
2.1.2	Parameters	4
2.1.3	Events	4
2.2	Compared Parameters	5
2.3	Aspect	6
2.4	Star Slots	9
2.4.1	Slot 3	9
2.4.2	Slot 4	10
2.4.3	Slot 5	11
2.4.4	Slot 6	12
2.4.5	Slot 7	13
2.5	FID Slots	14
2.5.1	Slot 0	14
2.5.2	Slot 1	15
2.5.3	Slot 2	16
A	Summary	17
A.1	Status	17
A.2	Comments	17

1 Front

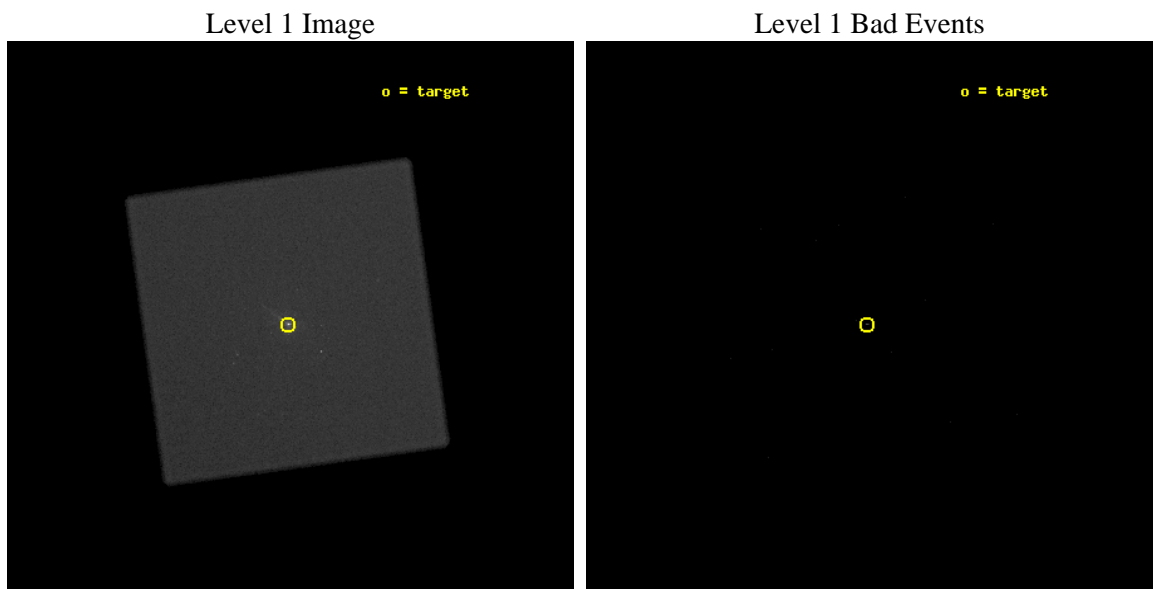
seq_num	701949	Sequence number
obs_id	10408	Observation id
title	Mapping the Centaurus A Nuclear Region	Proposal title
observer	DR. MARGARITA KAROVSKA	Principal investigator
object	CEN A	Source name
ra_targ	201.365062	Observer's specified target RA [deg]
dec_targ	-43.019114	Observer's specified target Dec [deg]
ra_nom	201.35949121593	Nominal RA [deg]
dec_nom	-43.020265997297	Nominal Dec [deg]
roll_nom	217.17914172791	Nominal Roll [deg]
revision	3	Processing version of data
ontime	15154.882010579	[s]
livetime	14967.4450417	Ontime multiplied by DTCOR
l2events	1212505	Number of level 2 events



2 OBI

2.1 OBI

2.1.1 Images



2.1.2 Parameters

obi_num	0	Obi number	sched_exp_time	15000.000000	[s] Scheduled observation exposure time
ascdsver	8.4.5	Processing system revision	ontime	15154.882010579	[s]
caldbver	4.5.1.1	 	l1events	1866543	Number of level 1 events
date	2012-08-13T14:21:45	Date and time of file creation			
revision	3	Processing version of data			

2.1.3 Events

Level 1 Events

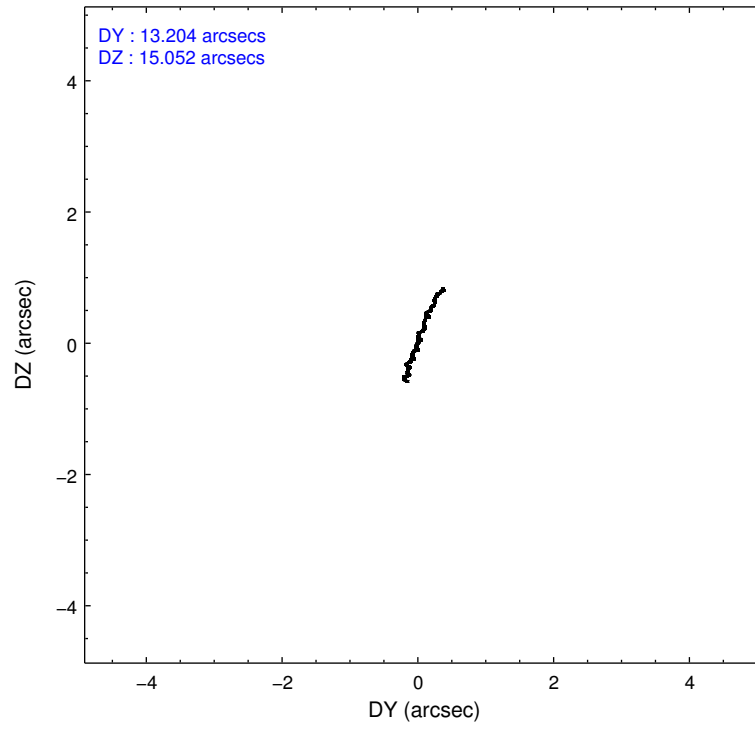
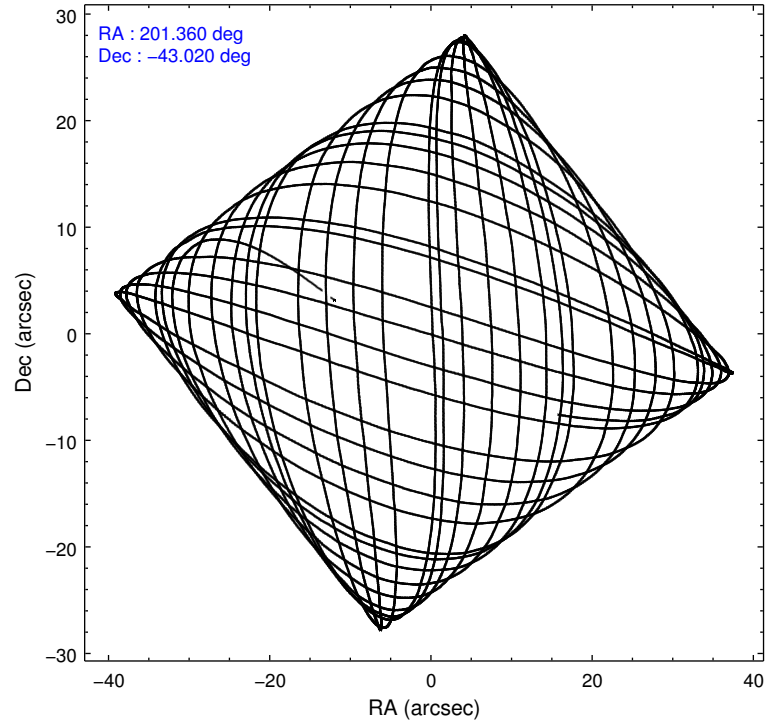
	segment 0
level 1 events	1866543
rejected events	136692
rejected %	7%

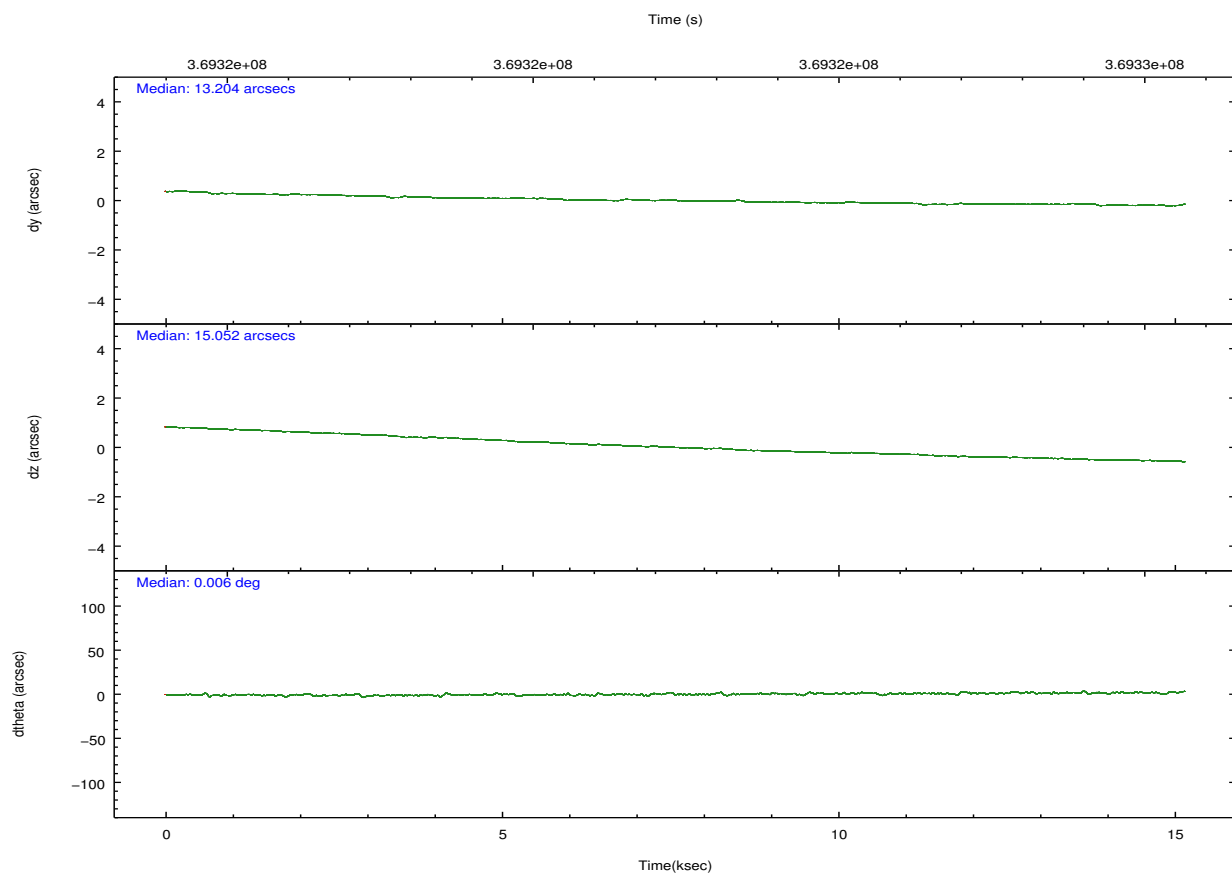
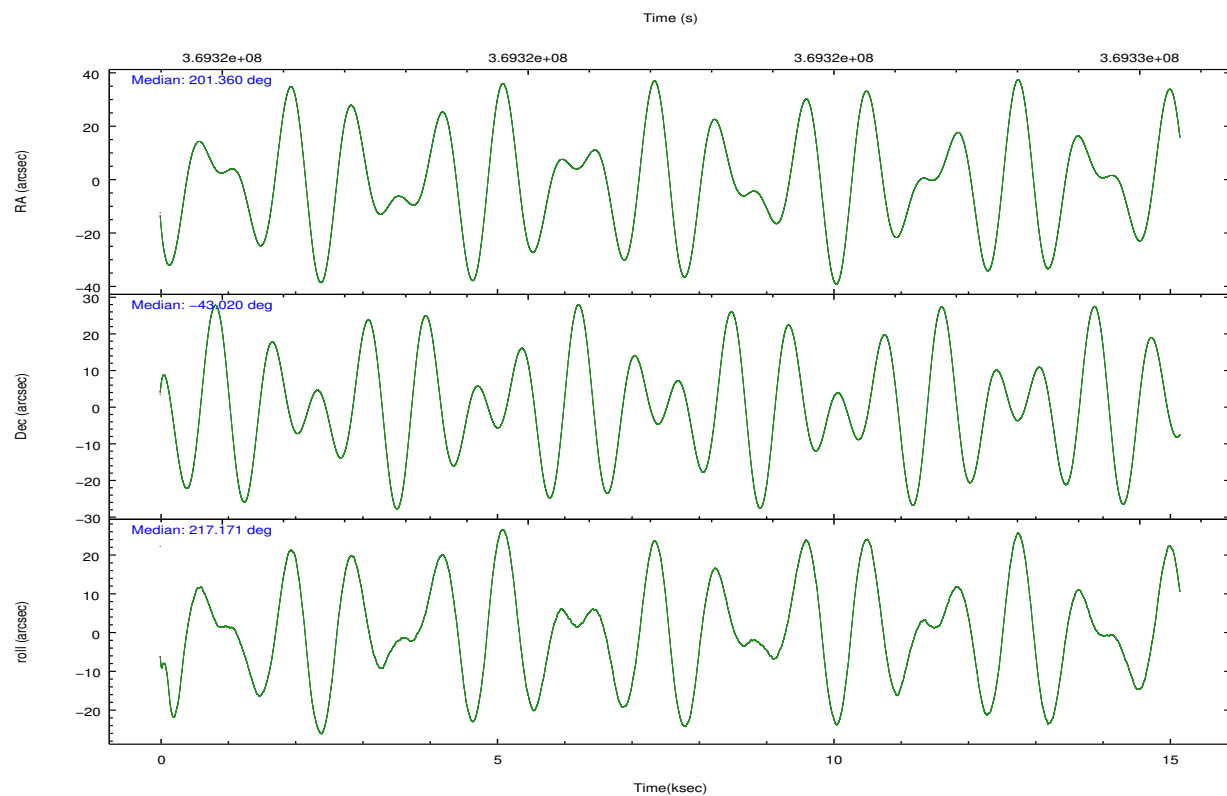
2.2 Compared Parameters

Parameter	Planned	Actual
Instrument	HRC	HRC
Detector	HRC-I	HRC-I
Grating	NONE	NONE
Data mode	OBSERVING	OBSERVING
Observation mode	POINTING	POINTING
[deg] Pointing RA	201.373114	201.3594912159257
[deg] Pointing Dec	-42.994931	-43.02026599729727
[deg] Pointing Roll	217.283933	217.1791417279141
[mm] SIM focus pos	-1.040293	-1.038866356238299
[mm] SIM defocus	0	0.001426264420575141
[mm] SIM translation stage pos	126.985494	126.9804656746847
[mm] SIM translation stage offset	0	0.005023216916882234
[s] Observation start time (MET)	369314895.184000	369313545.47668
Observation start date	2009-09-14T11:27:09	2009-09-14T11:05:45
[s] Observation end time (MET)	369329895.184000	369330878.74005
Observation end date	2009-09-14T15:37:09	2009-09-14T15:54:38

Parameter	Planned	Actual
Obspar format version number	7	7
Obspar file type	PREDICTED	ACTUAL
Obspar update status	NONE	UPDATED

2.3 Aspect



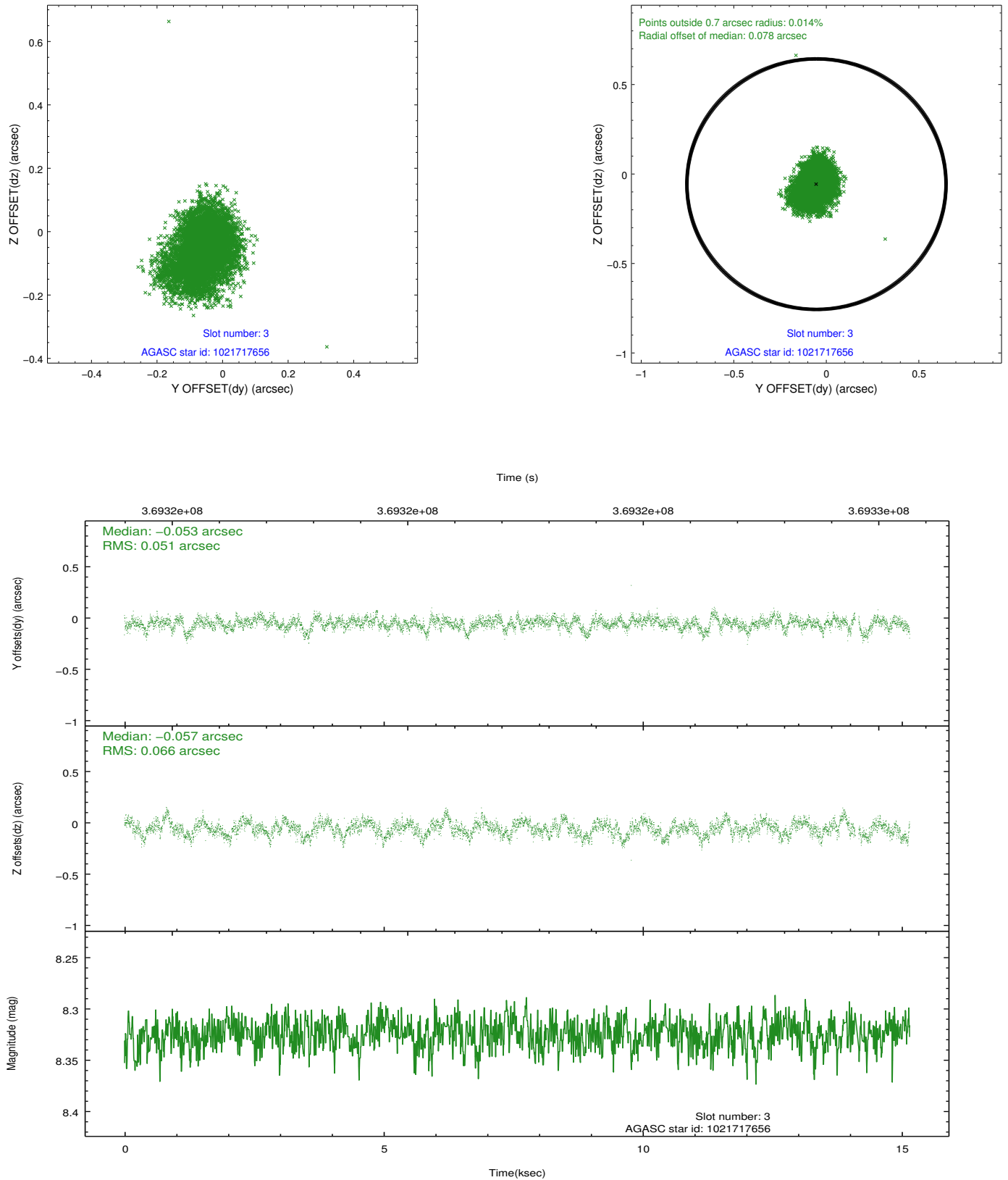


Slot Statistics

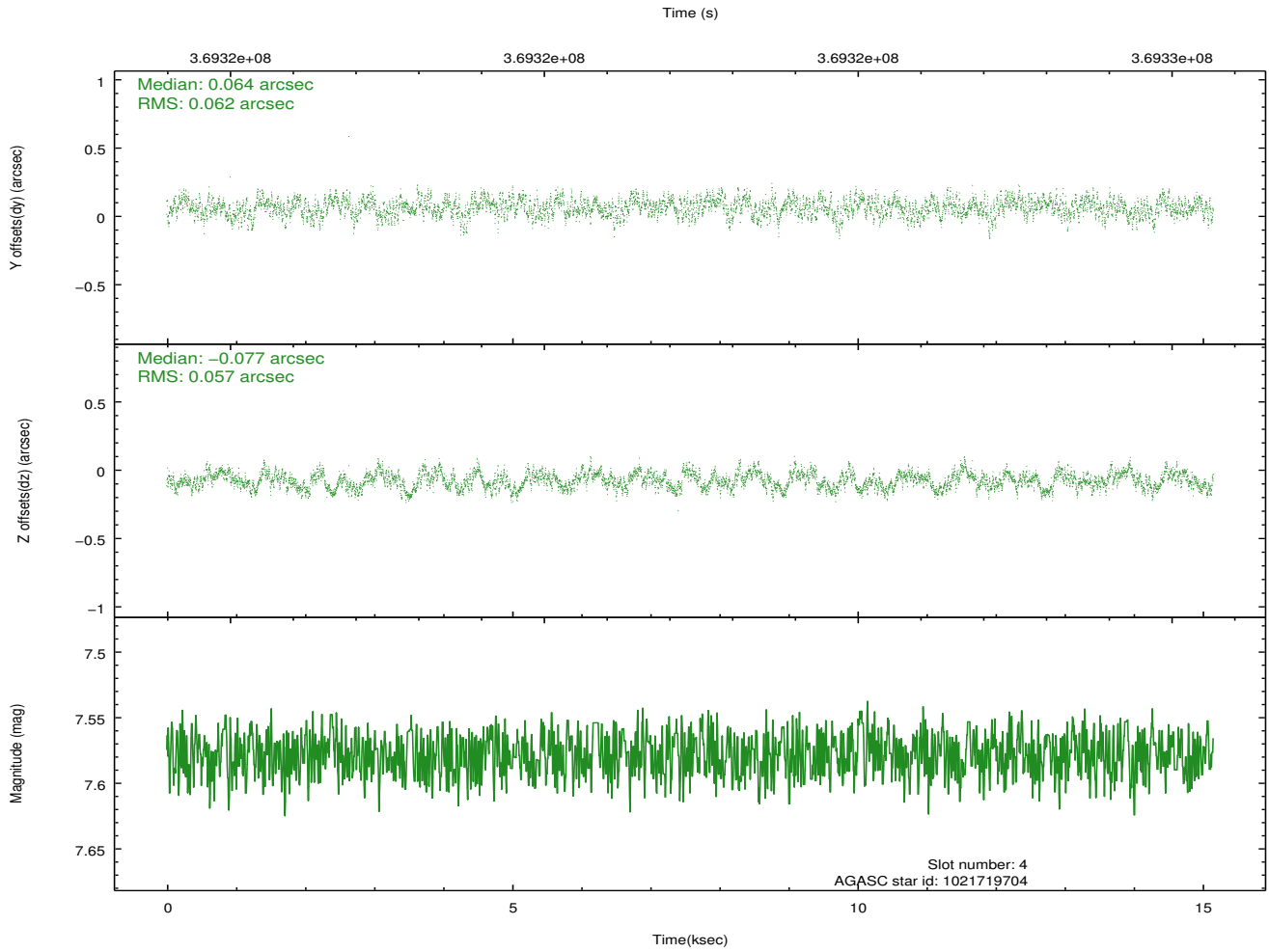
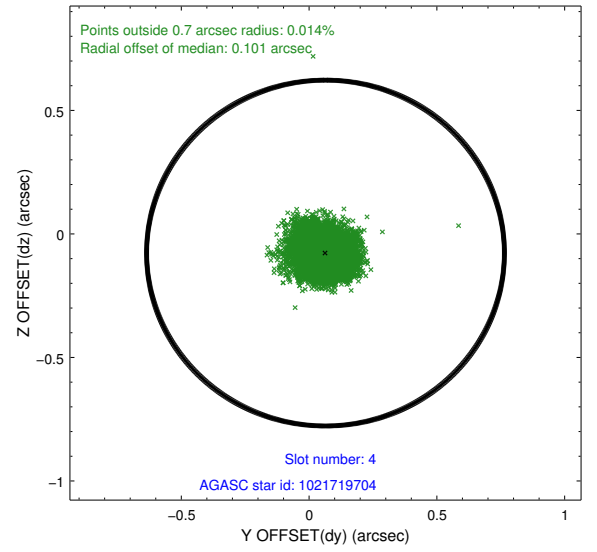
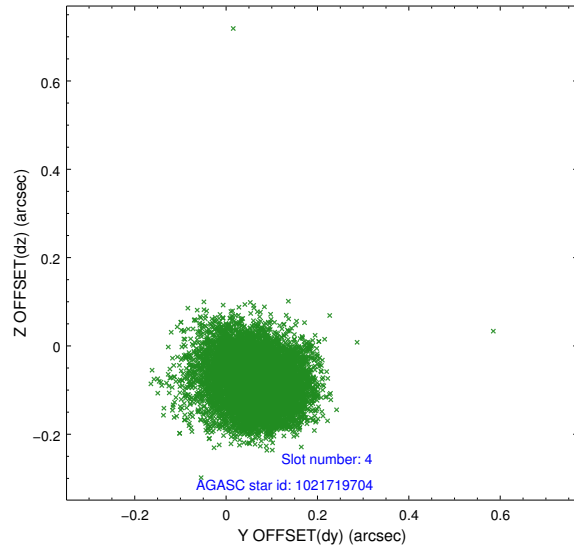
slot	status	id	mag	n_pts	med_dy	med_dz	dr1	dr2	ra	dec	mean_y	mean_z
0	FID	HRC-I-1	6.97	3697	-0.099	0.016	0.014	0.022	0.000000	0.000000	-769.02	-1303.15
1	FID	HRC-I-2	7.01	3697	0.241	-0.113	0.011	0.021	0.000000	0.000000	843.74	-1305.14
2	FID	HRC-I-3	7.06	3696	-0.024	0.006	0.012	0.024	0.000000	0.000000	-1197.29	1001.04
3	GUIDE	1021717656	8.32	7354	-0.053	-0.057	0.089	0.147	201.139642	-43.082878	681.06	-119.26
4	GUIDE	1021719704	7.58	7392	0.064	-0.077	0.091	0.140	200.511976	-43.050426	1931.14	-1203.83
5	GUIDE	1021721304	9.68	7378	-0.049	-0.171	0.168	0.352	201.117326	-42.480412	-580.23	-1884.80
6	GUIDE	1021721672	9.54	7384	-0.066	-0.050	0.127	0.208	201.740358	-43.079729	-581.93	829.08
7	GUIDE	1022235840	9.44	7375	0.090	0.347	0.133	0.209	201.679306	-43.544276	563.24	2059.13

2.4 Star Slots

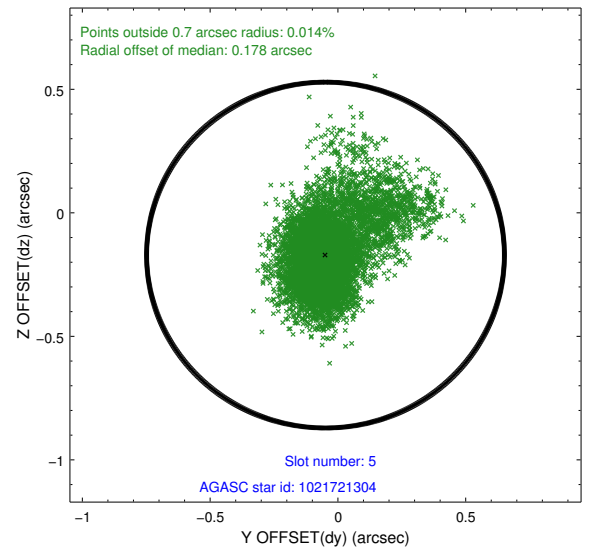
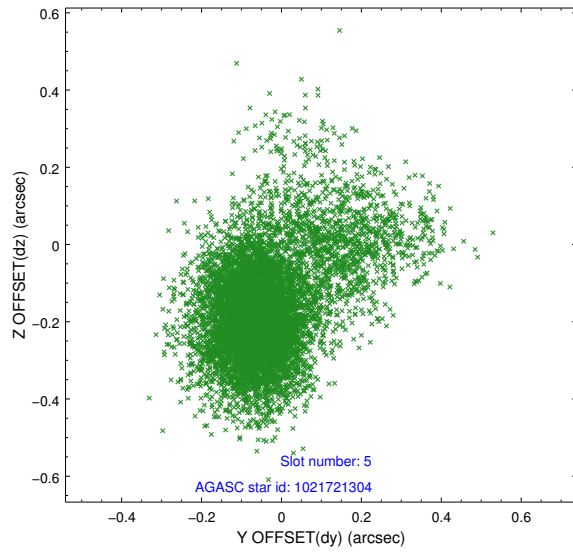
2.4.1 Slot 3



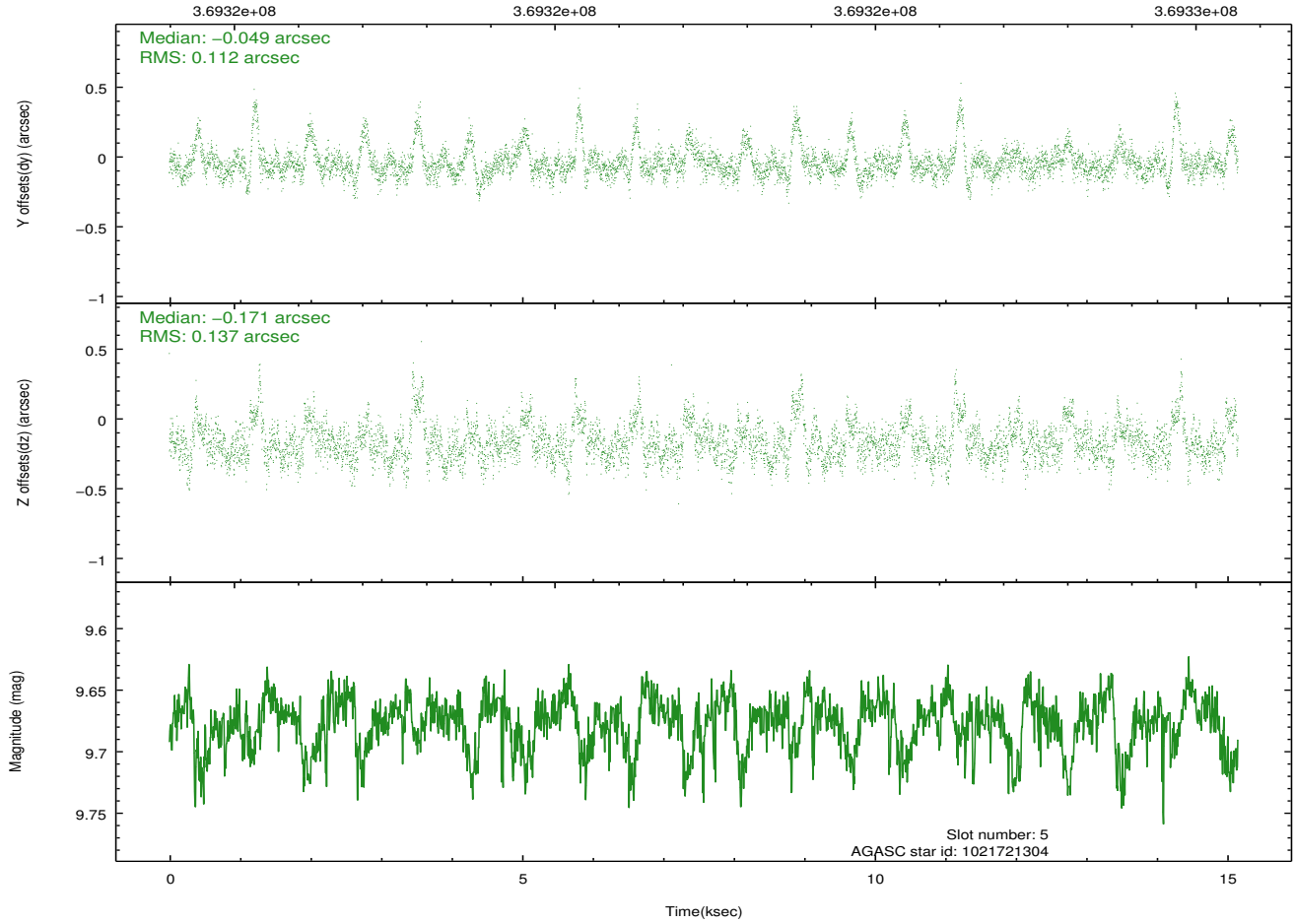
2.4.2 Slot 4



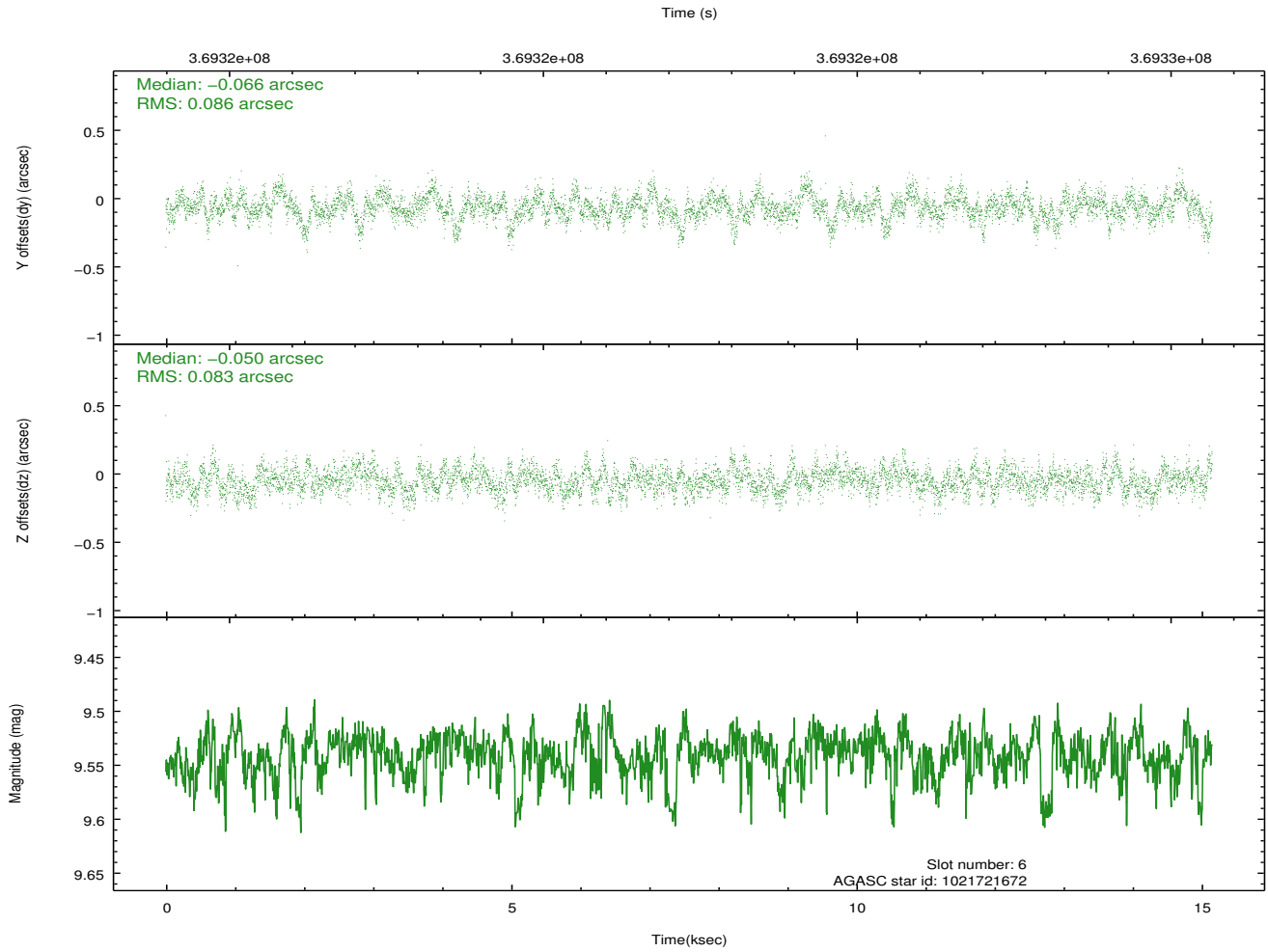
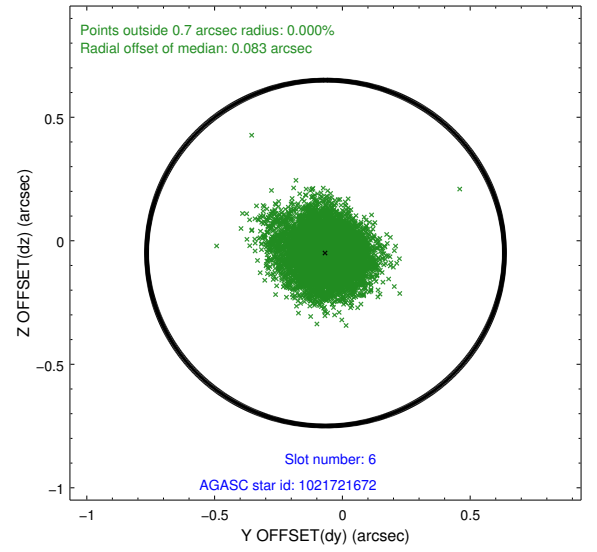
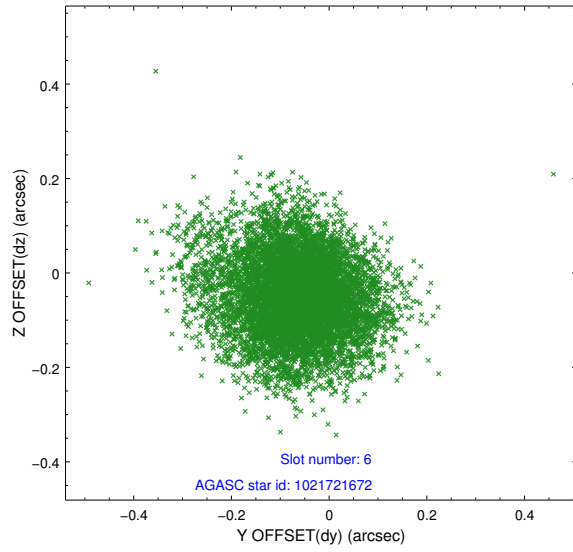
2.4.3 Slot 5



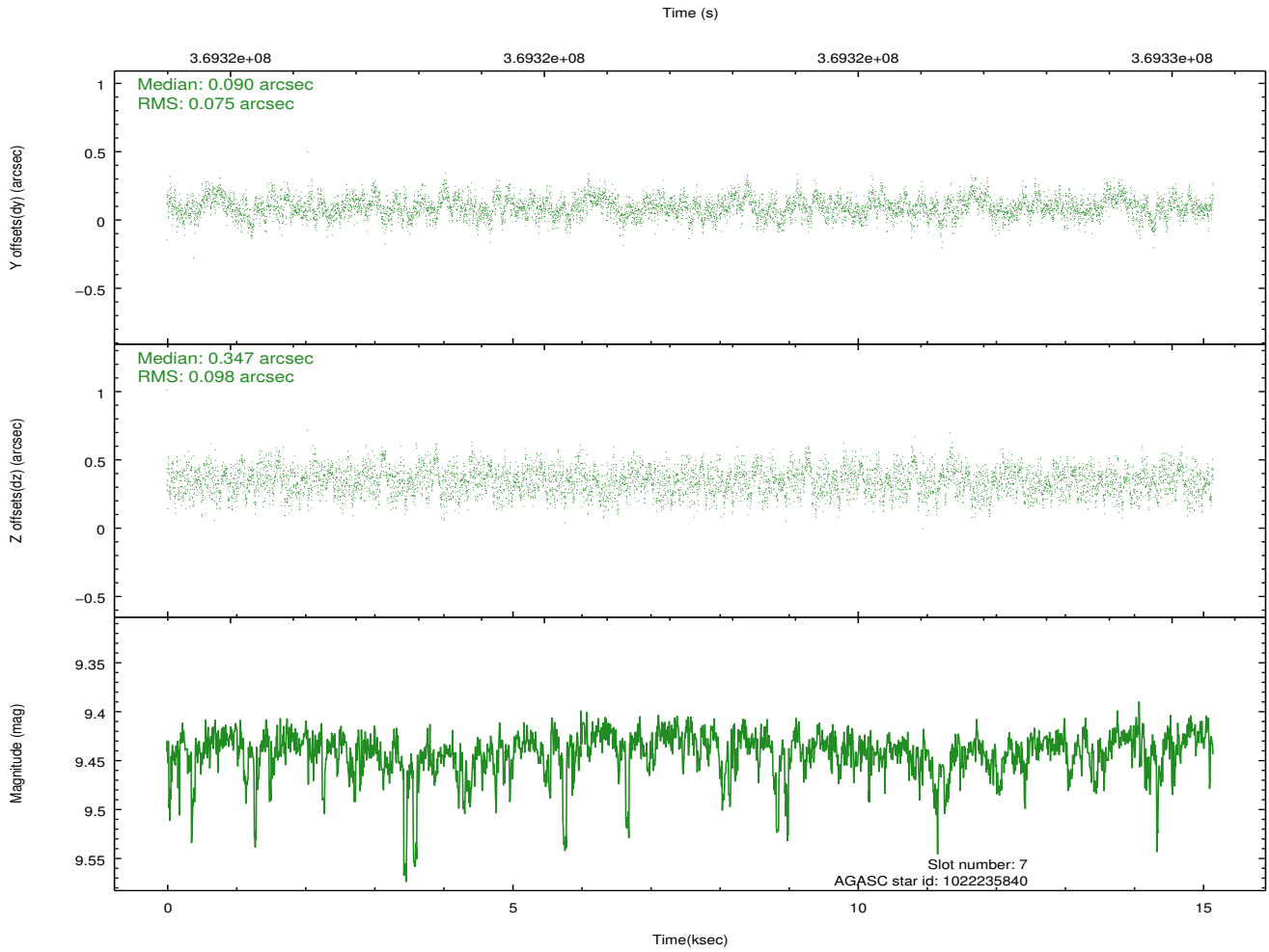
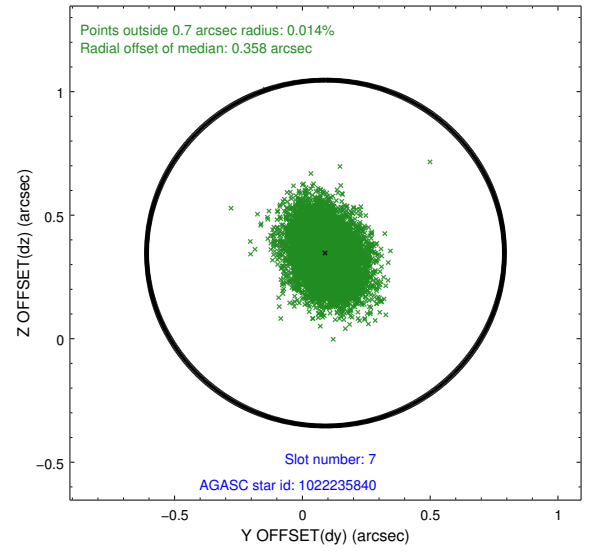
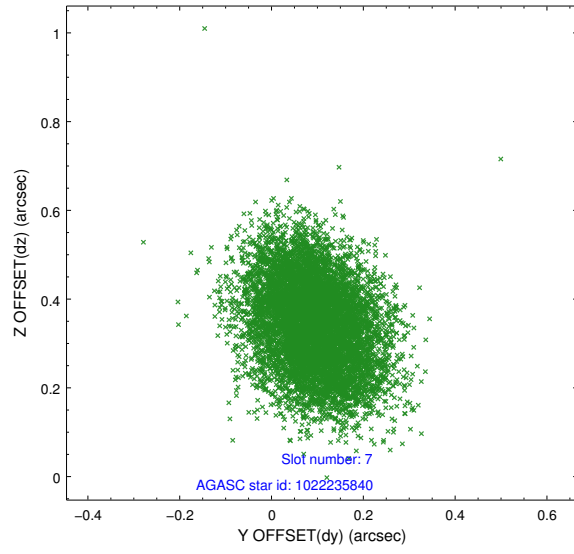
Time (s)



2.4.4 Slot 6

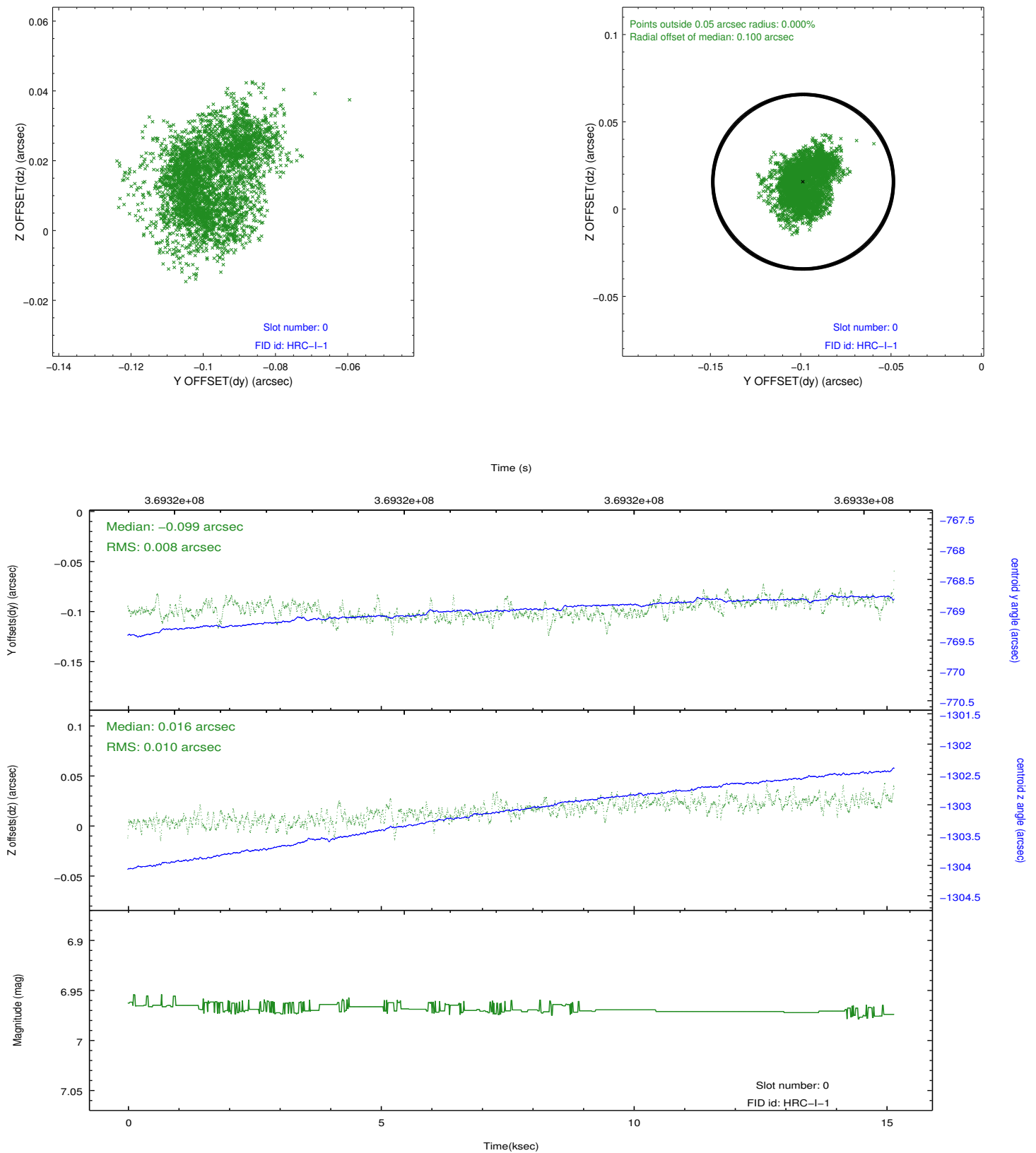


2.4.5 Slot 7

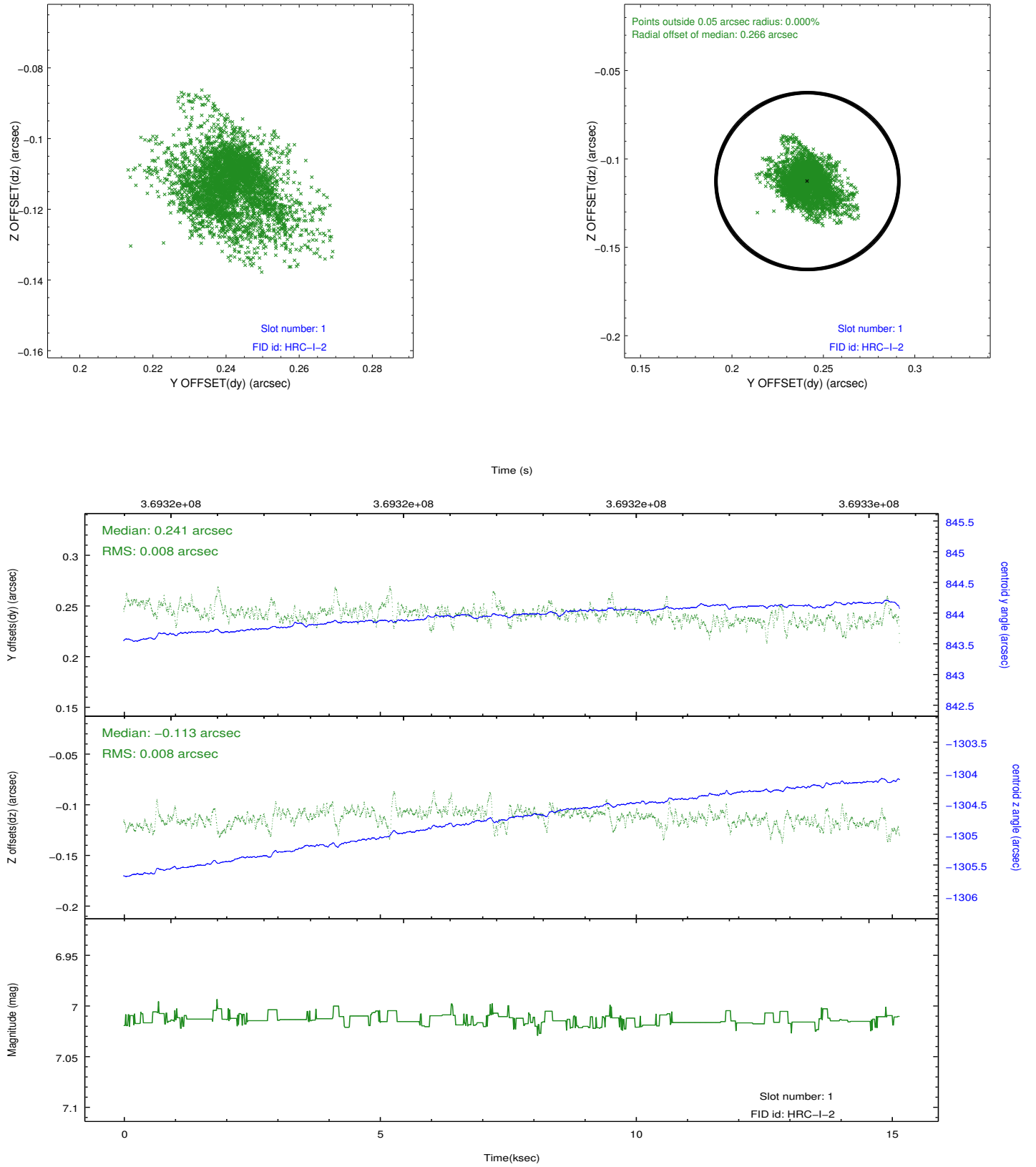


2.5 FID Slots

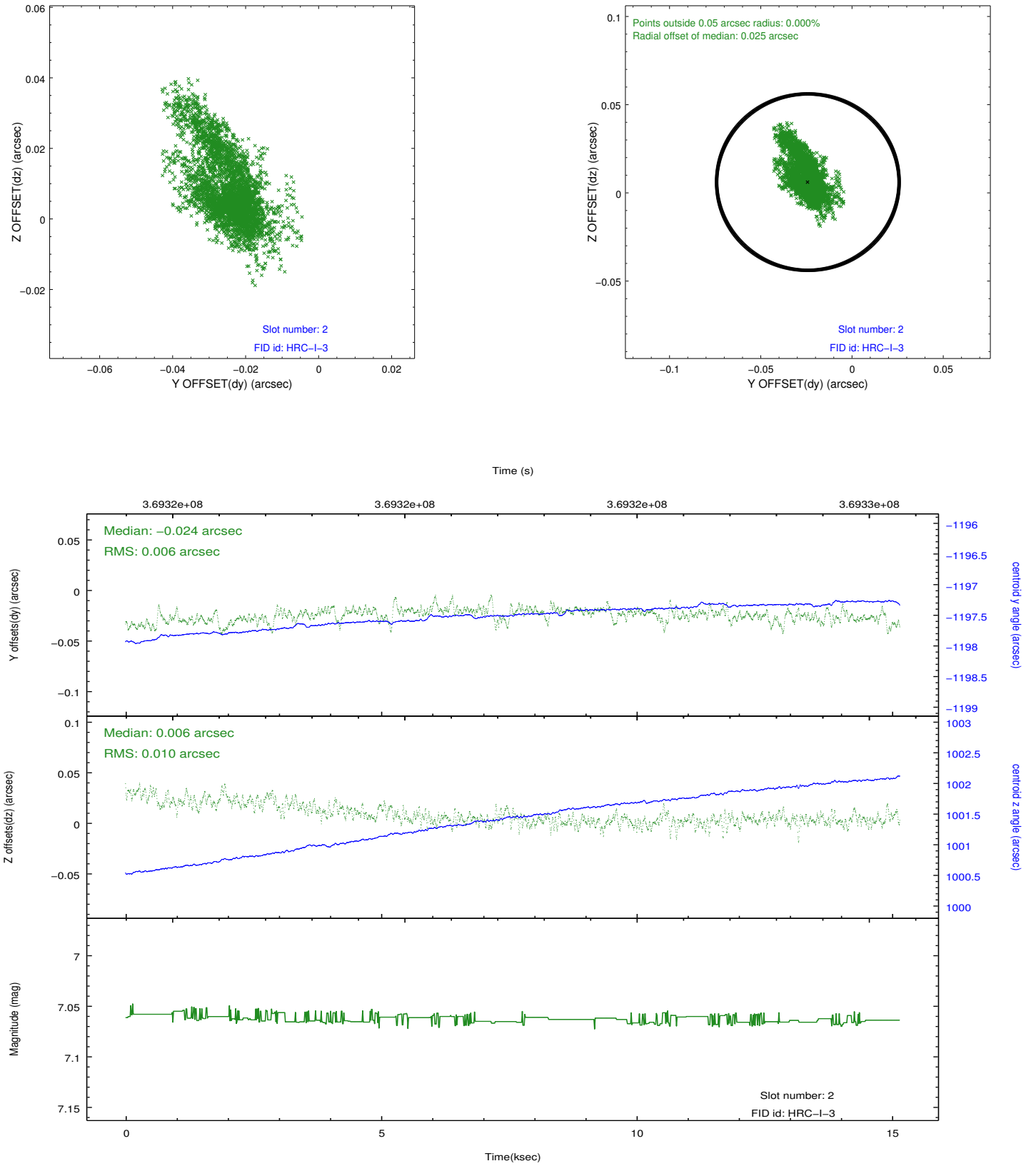
2.5.1 Slot 0



2.5.2 Slot 1



2.5.3 Slot 2



A Summary

A.1 Status

V&V Scientist	Jen Lauer
V&V Date (YYYY-MM-DD)	2012.08.22
V&V Edition	1
V&V Disposition and Status	OK
V&V Charge Time	15.1548820104

A.2 Comments