

V&V Reference Report

L2 ASCDS Version : 8.4.4

Observation 10388 - L2 Version 2
Chandra X-Ray Center

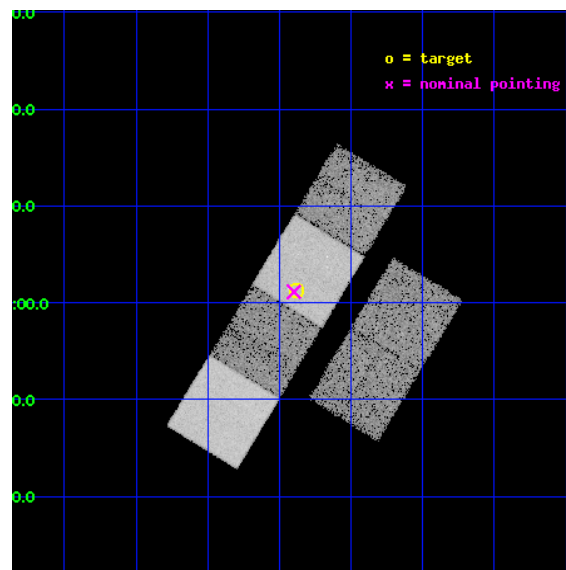
L2 Processing Date : May 29 2012

Contents

1	Front	2
2	OBI	3
2.1	OBI	3
2.1.1	Images	3
2.1.2	Bias	3
2.1.3	Parameters	4
2.1.4	Events	4
2.2	Compared Parameters	5
2.3	Aspect	6
2.4	Star Slots	9
2.4.1	Slot 3	9
2.4.2	Slot 4	10
2.4.3	Slot 5	11
2.4.4	Slot 6	12
2.4.5	Slot 7	13
2.5	FID Slots	14
2.5.1	Slot 0	14
2.5.2	Slot 1	15
2.5.3	Slot 2	16
A	Summary	17
A.1	Status	17
A.2	Comments	17

1 Front

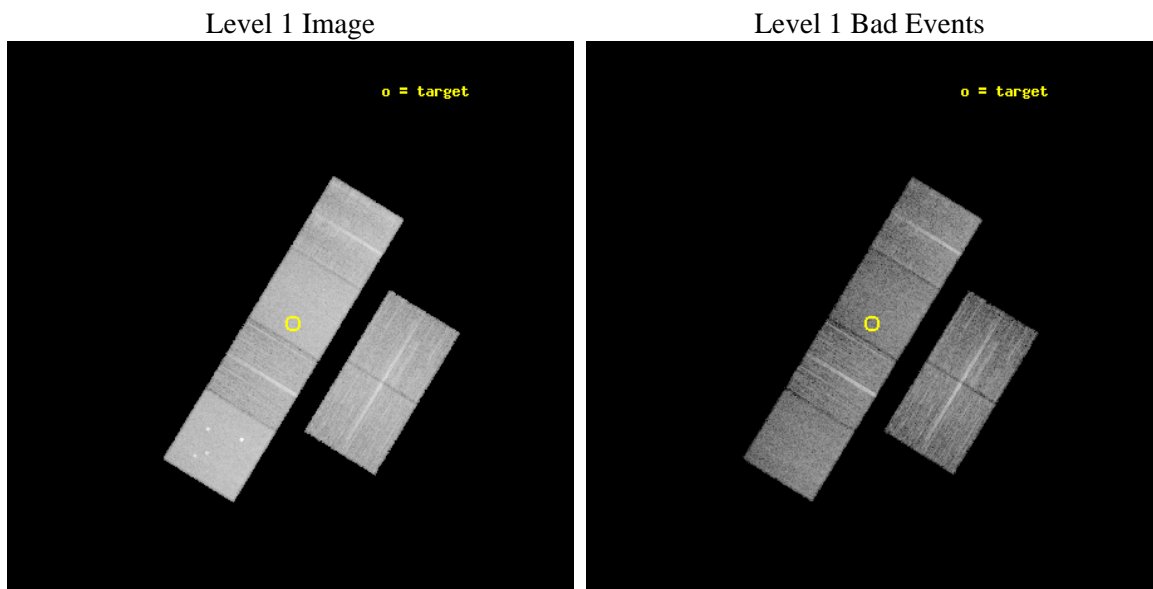
seq_num	701931	Sequence number
obs_id	10388	Observation id
title	Chandra X-ray Scrutiny of New Radio-Shy BL Lac Candidates	Proposal
observer	Dr. Scott Anderson	Principal investigator
object	SDSS J211552.88+000115.5	Source name
dtcycle	0	
cycle	P	events from which exps? Prim/Second/Both
ra_targ	318.970417	Observer's specified target RA [deg]
dec_targ	0.020972	Observer's specified target Dec [deg]
ra_nom	318.97469067642	Nominal RA [deg]
dec_nom	0.018834312932183	Nominal Dec [deg]
roll_nom	301.34038849292	Nominal Roll [deg]
revision	2	Processing version of data
ontime	9574.3999643922	Sum of GTIs [s]
livetime	9453.1631470315	Livetime [s]
ontime2	9574.3999643922	Sum of GTIs [s]
ontime3	9574.3999643922	Sum of GTIs [s]
ontime5	9574.3999643922	Sum of GTIs [s]
ontime6	9574.3999643922	Sum of GTIs [s]
ontime7	9574.3999643922	Sum of GTIs [s]
ontime8	9574.3999643922	Sum of GTIs [s]
l2events	162618	Number of level 2 events



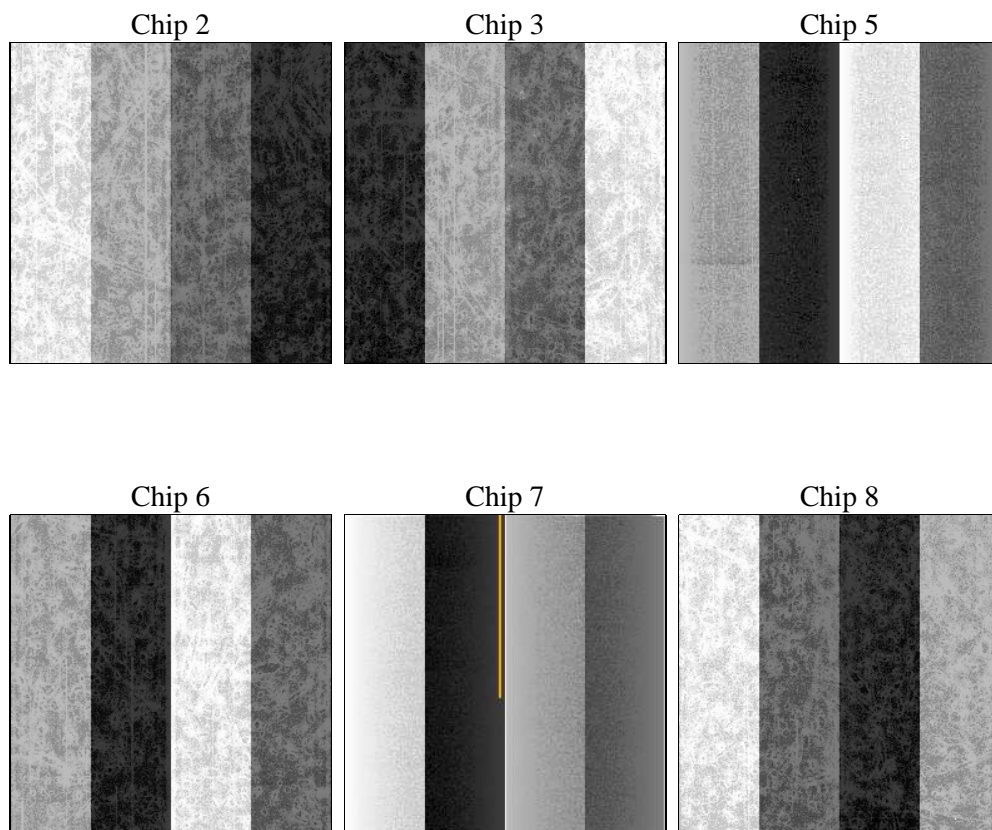
2 OBI

2.1 OBI

2.1.1 Images



2.1.2 Bias



2.1.3 Parameters

obi_num	0	Obi number	sched_exp_time	9400.000000	[s] Scheduled observation exposure time
ascdsver	8.4.4	Processing system revision	ontime	9574.3999643922	Sum of GTIs [s]
caldsver	4.4.9	 	ontime2	9574.3999643922	Sum of GTIs [s]
date	2012-05-29T14:45:52	Date and time of file creation	ontime3	9574.3999643922	Sum of GTIs [s]
revision	2	Processing version of data	ontime5	9574.3999643922	Sum of GTIs [s]
			ontime6	9574.3999643922	Sum of GTIs [s]
			ontime7	9574.3999643922	Sum of GTIs [s]
			ontime8	9574.3999643922	Sum of GTIs [s]
			l1events	730856	Number of level 1 events

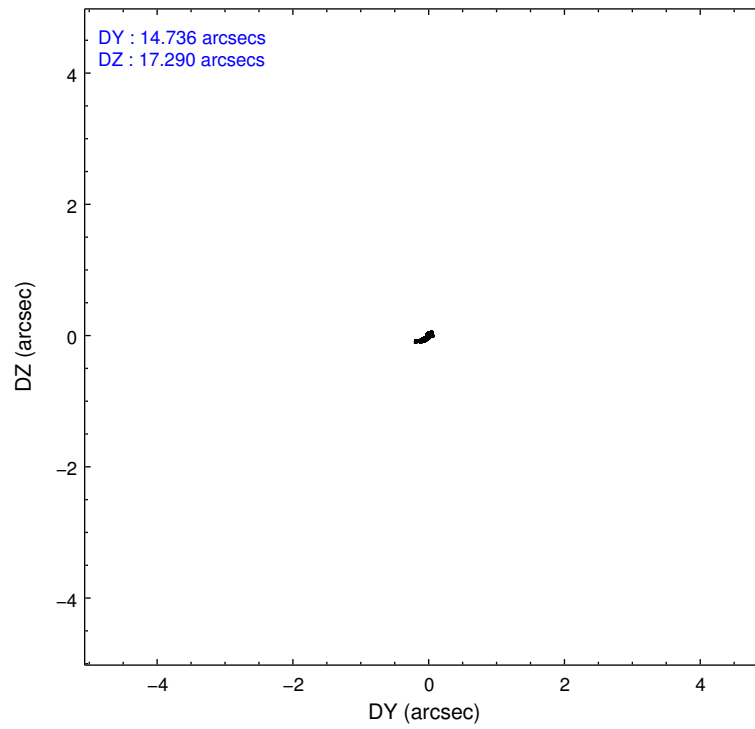
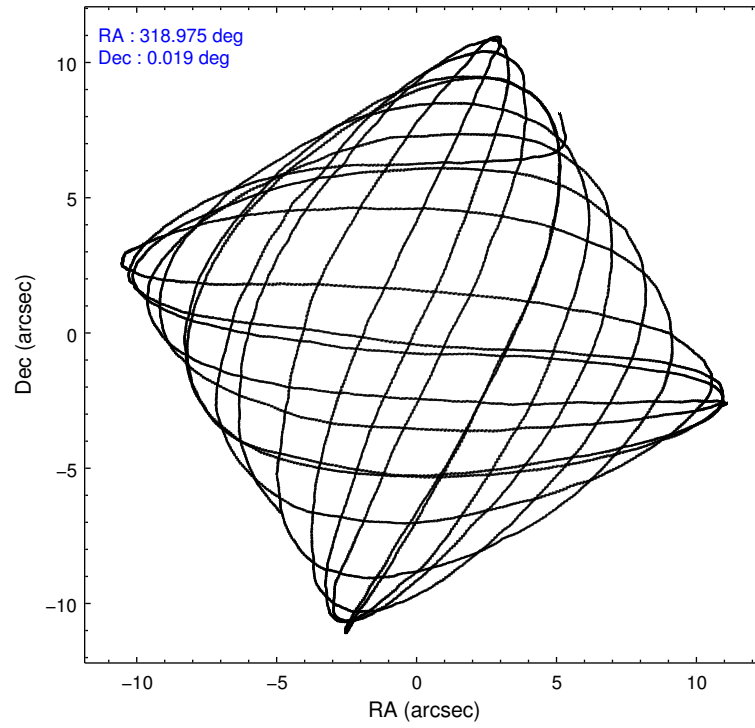
2.1.4 Events

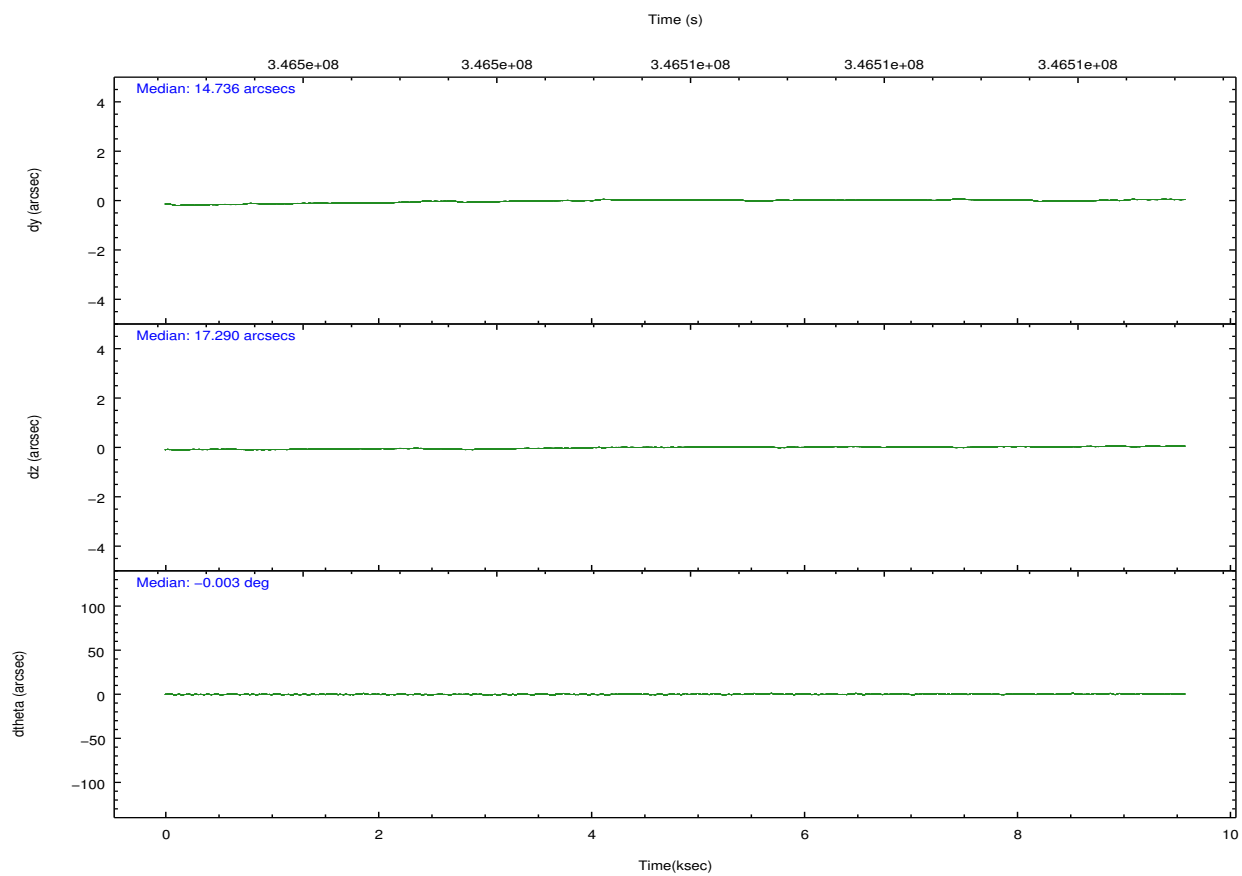
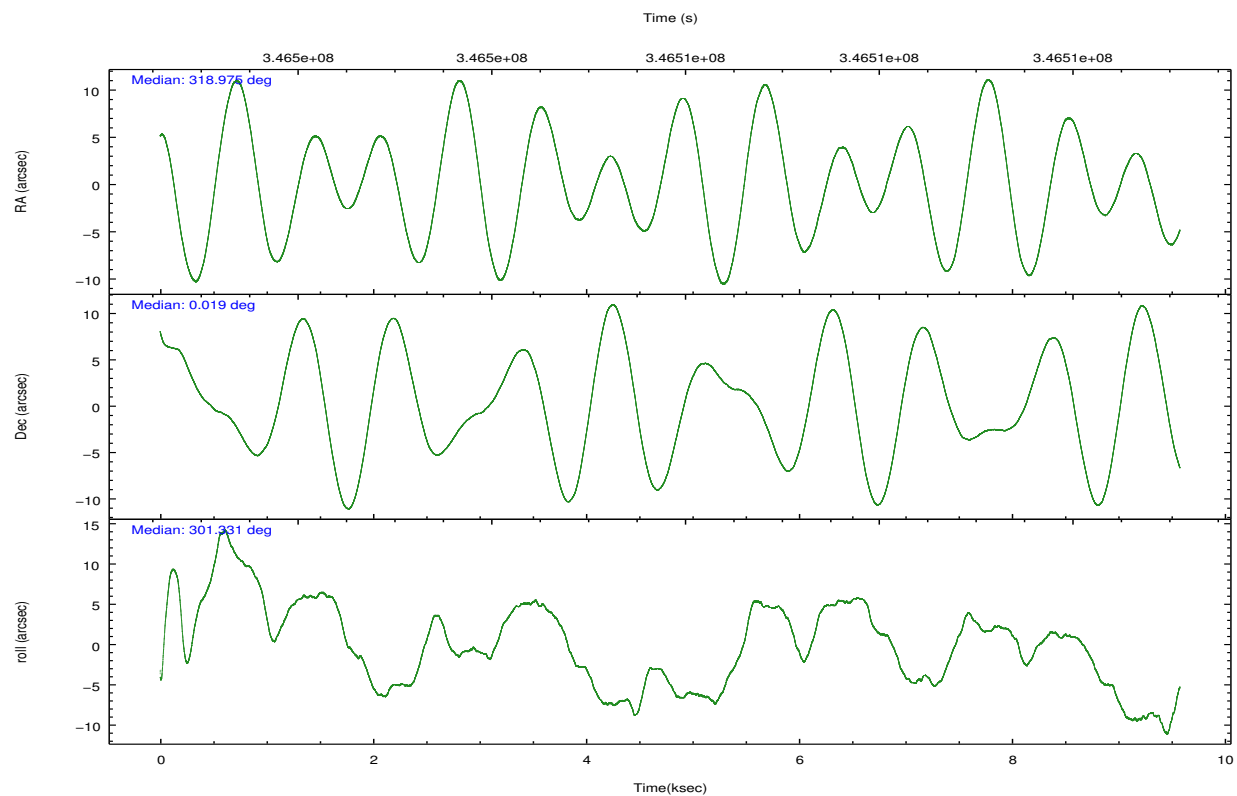
	ccd 2	ccd 3	ccd 5	ccd 6	ccd 7	ccd 8		ccd 2	ccd 3	ccd 5	ccd 6	ccd 7	ccd 8
level 1 events	102898	96561	159764	102560	141027	128046	grade 0 events	5828	5271	7836	4810	5119	9532
rejected events	90778	85120	89475	90825	85131	99899		5%	5%	4%	4%	3%	7%
rejected %	88%	88%	56%	88%	60%	78%	grade 1 events	80	61	274	49	152	111
								0%	0%	0%	0%	0%	0%
							grade 2 events	2700	2410	22666	2749	12095	6866
								2%	2%	14%	2%	8%	5%
							grade 3 events	1111	1202	2524	1154	5059	2993
								1%	1%	1%	1%	3%	2%
							grade 4 events	1084	1059	2488	1153	5118	2818
								1%	1%	1%	1%	3%	2%
							grade 5 events	4244	4760	11205	4881	13266	6537
								4%	4%	7%	4%	9%	5%
							grade 6 events	2083	2163	39013	2547	31868	7653
								2%	2%	24%	2%	22%	5%
							grade 7 events	85768	79635	73758	85217	68350	91536
								83%	82%	46%	83%	48%	71%

2.2 Compared Parameters

Parameter	Planned	Actual	Parameter	Planned	Actual
Instrument	ACIS	ACIS	Obspar format version number	7	7
Detector	ACIS-235678	ACIS-235678	Obspar file type	PREDICTED	ACTUAL
Grating	NONE	NONE	Obspar update status	NONE	UPDATED
Data mode	FAINT	FAINT	CCD I0 on	N	N
Observation mode	POINTING	POINTING	CCD I1 on	N	N
[deg] Pointing RA	318.950566	318.9746906764233	CCD I2 on	O1	Y
[deg] Pointing Dec	0.031556	0.01883431293218286	CCD I3 on	O2	Y
[deg] Pointing Roll	301.183791	301.3403884929249	CCD S0 on	N	N
[mm] SIM focus pos	-0.684267	-0.6828225247311905	CCD S1 on	Y	Y
[mm] SIM defocus	0	0.001444936568705701	CCD S2 on	Y	Y
[mm] SIM translation stage pos	-190.132523	-190.1400660498719	CCD S3 on	Y	Y
[mm] SIM translation stage offset	0	0.00754346686406393	CCD S4 on	Y	Y
[s] Observation start time (MET)	346501230.184000	346499728.30278	CCD S5 on	N	N
Observation start date	2008-12-24T10:19:25	2008-12-24T09:55:28	Number of optional ACIS chips dropped	0	0
[s] Observation end time (MET)	346510630.184000	346511645.97836	On-chip summing requested	N	N
Observation end date	2008-12-24T12:56:05	2008-12-24T13:14:05	Subarray requested	NONE	NONE
Read mode	TIMED	TIMED	Alternating exposures requested	N	N
			[s] Primary exposure time	0.000000	3.2

2.3 Aspect



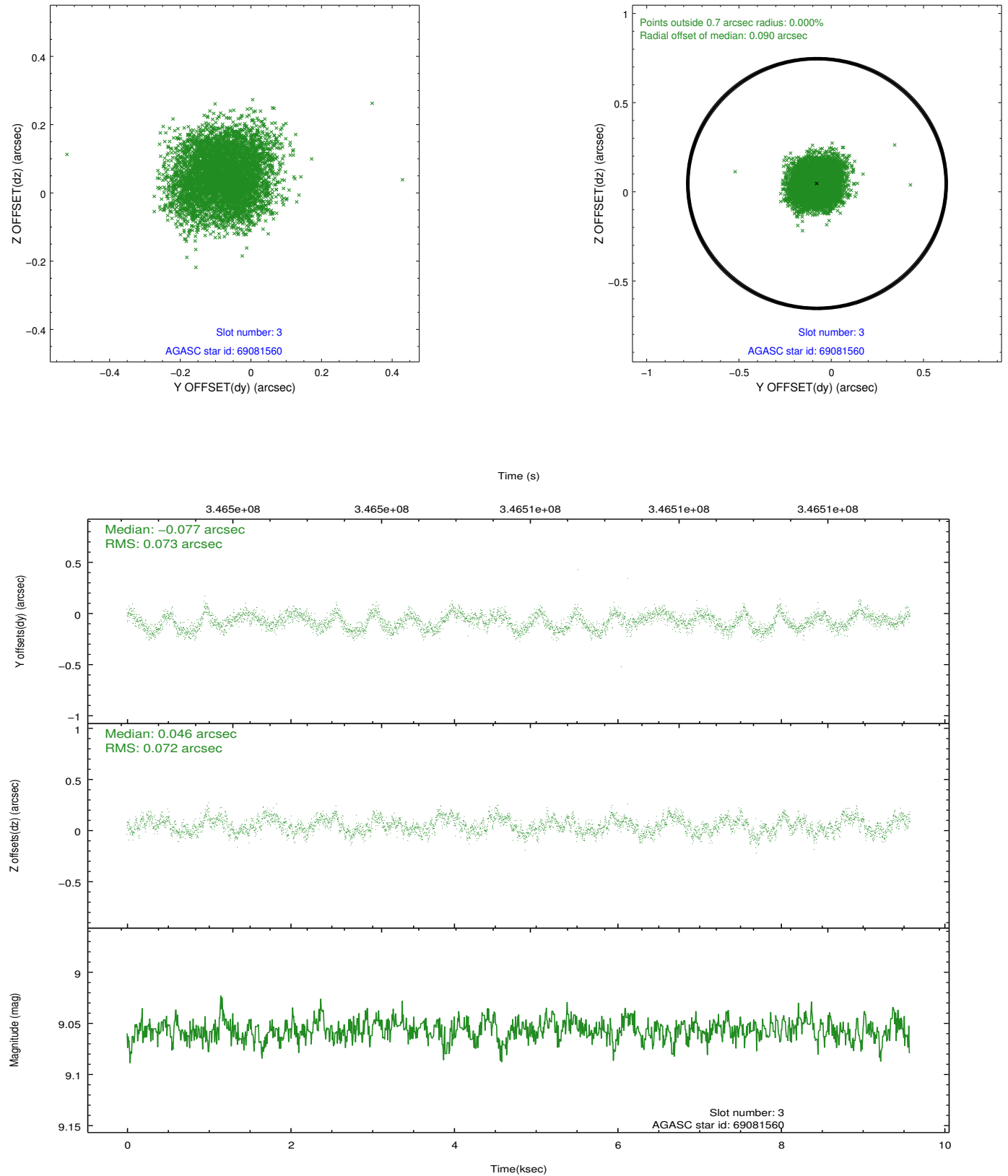


Slot Statistics

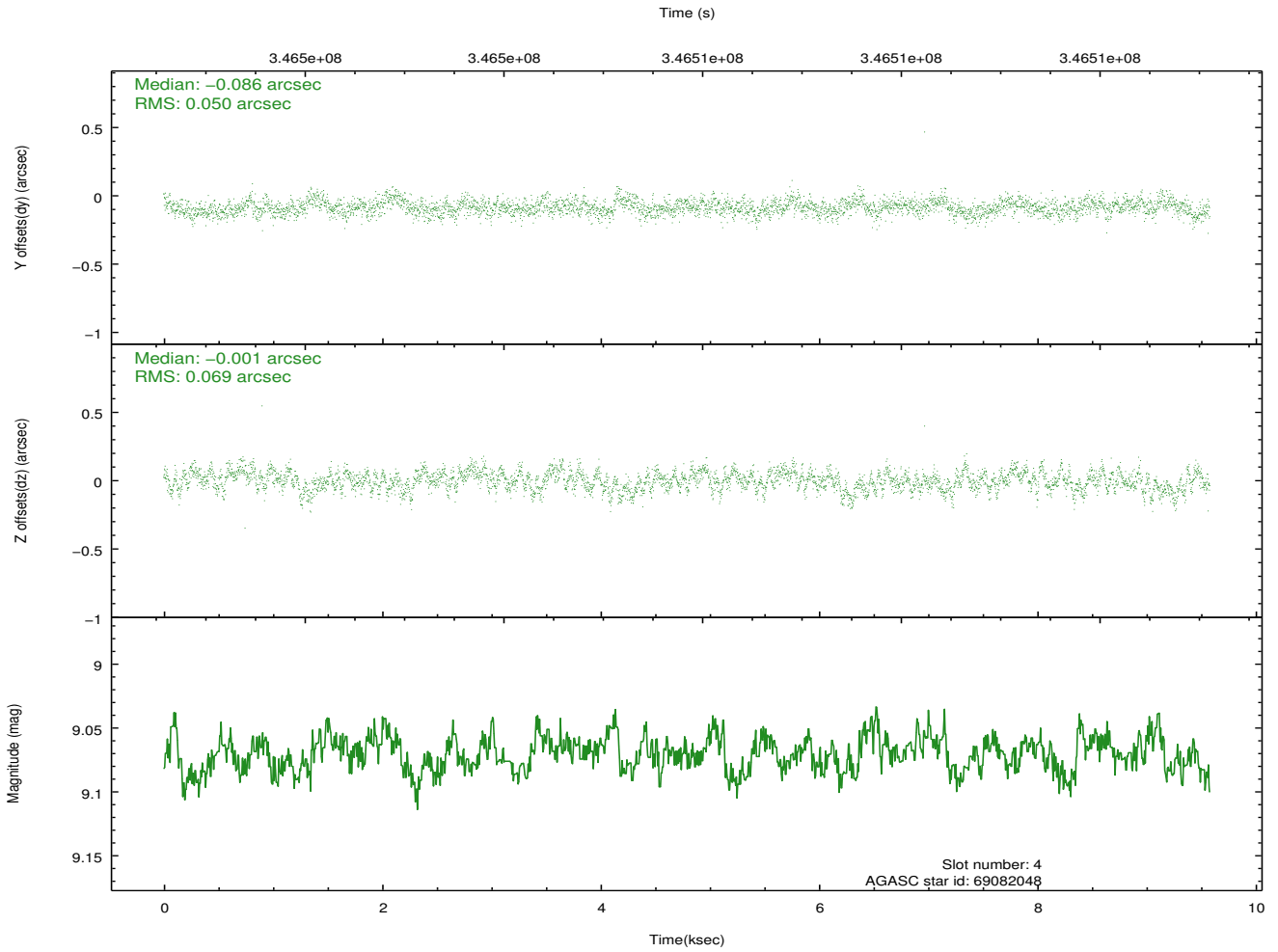
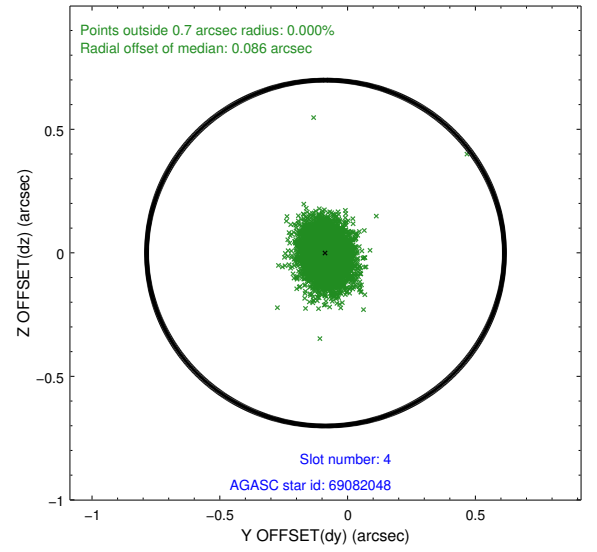
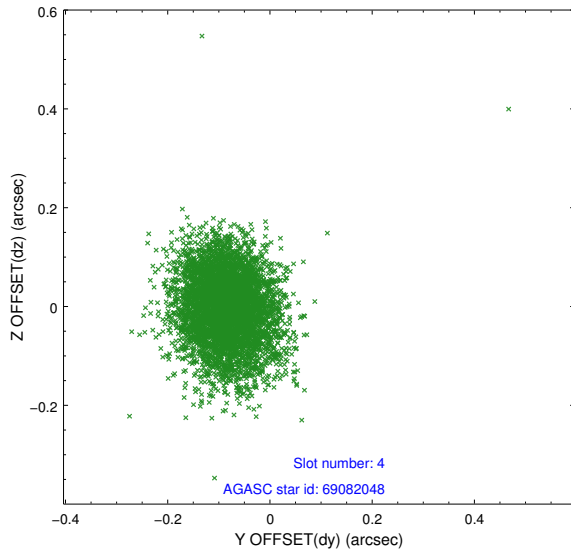
slot	status	id	mag	n_pts	med_dy	med_dz	dr1	dr2	ra	dec	mean_y	mean_z
0	FID	ACIS-S-2	6.87	2337	-0.048	-0.037	0.007	0.011	0.000000	0.000000	-767.77	-1738.73
1	FID	ACIS-S-4	6.95	2337	0.170	0.033	0.006	0.010	0.000000	0.000000	2145.52	169.16
2	FID	ACIS-S-5	6.99	2337	-0.153	0.012	0.006	0.011	0.000000	0.000000	-1819.95	163.56
3	GUIDE	69081560	9.06	4668	-0.077	0.046	0.112	0.170	318.438784	0.332625	-1880.49	-1015.10
4	GUIDE	69082048	9.07	4673	-0.086	-0.001	0.089	0.148	318.562341	0.301125	-1553.57	-693.27
5	GUIDE	69206872	8.41	4604	0.044	-0.102	0.106	0.156	319.009513	0.201113	-411.81	497.94
6	GUIDE	69212008	9.98	4670	-0.011	0.079	0.156	0.246	319.336387	0.529409	-814.05	2116.64
7	GUIDE	680658864	10.41	4596	0.135	-0.051	0.268	0.445	318.655324	-0.640404	1520.24	-2160.89

2.4 Star Slots

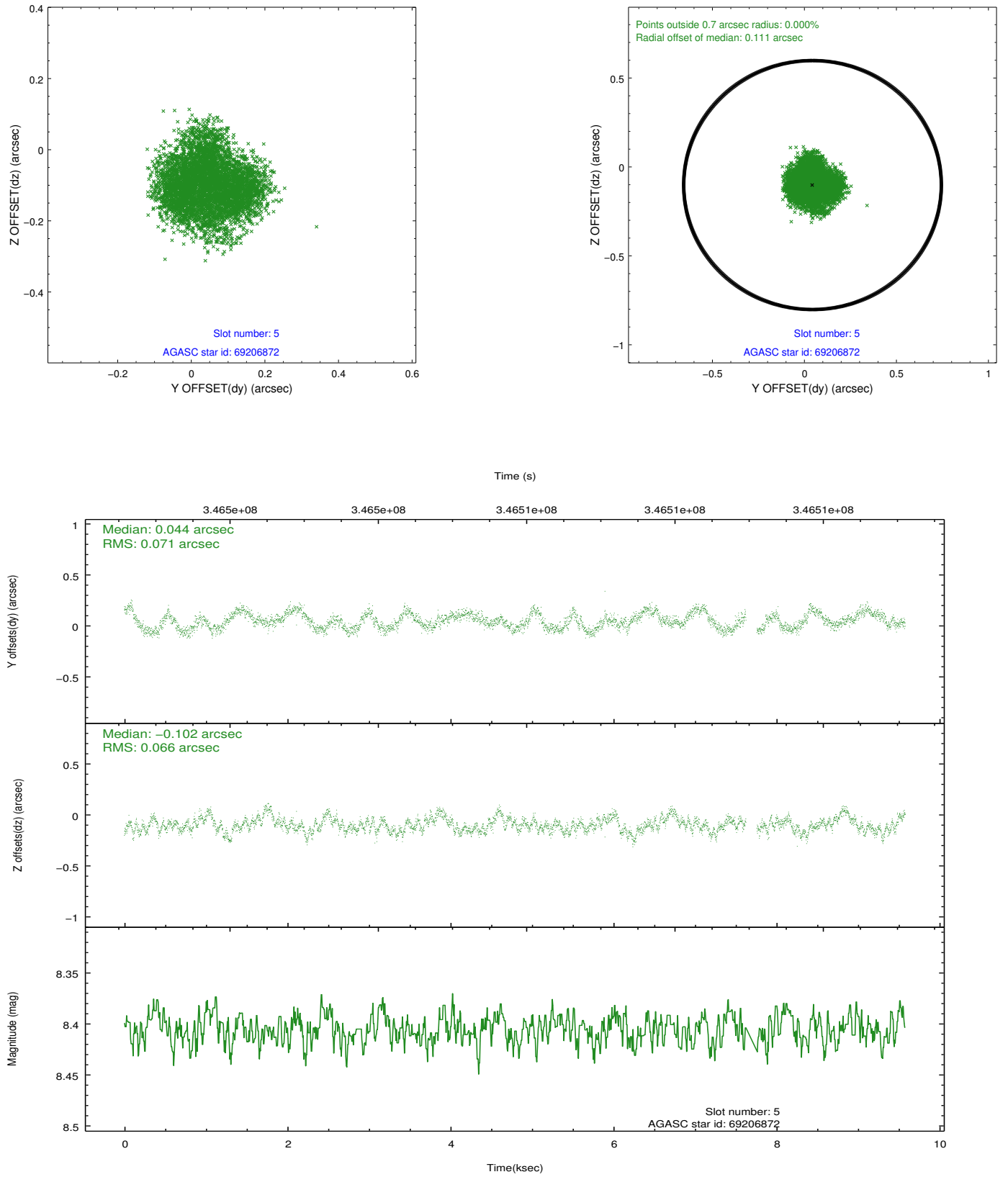
2.4.1 Slot 3



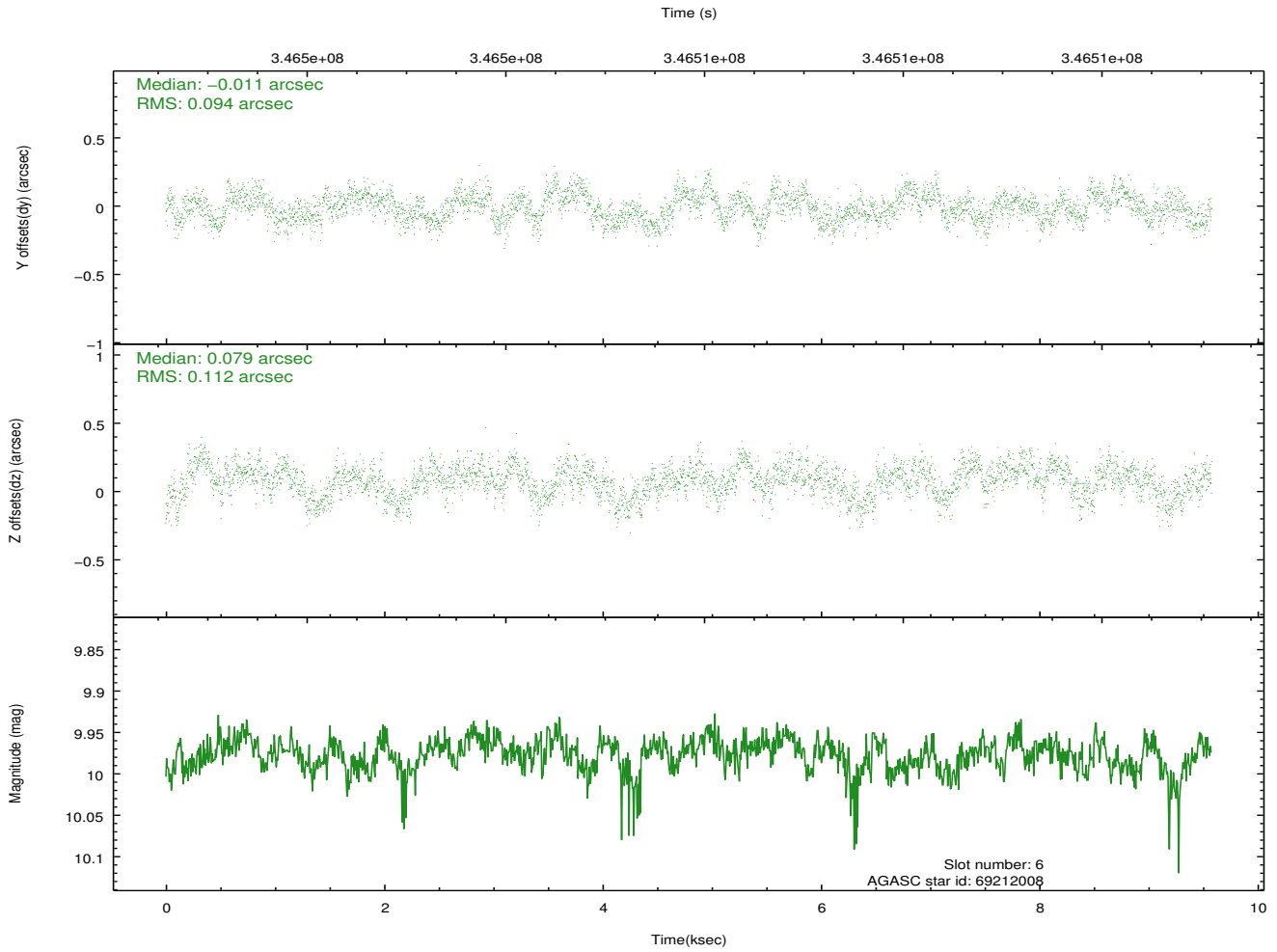
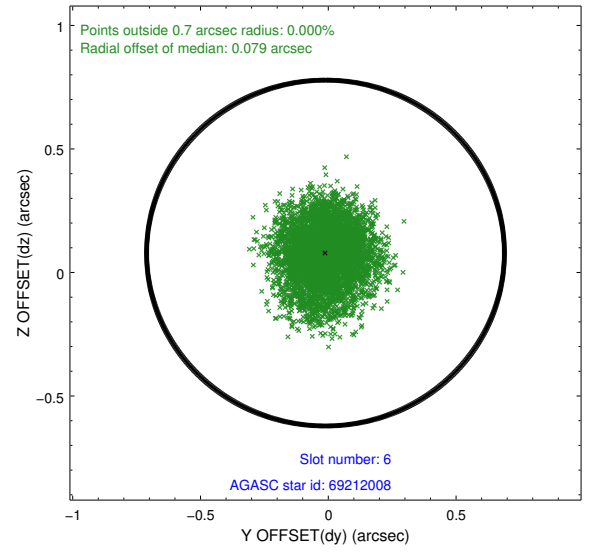
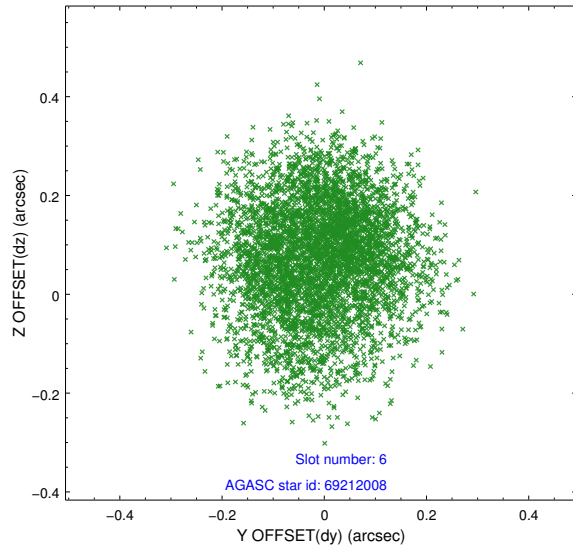
2.4.2 Slot 4



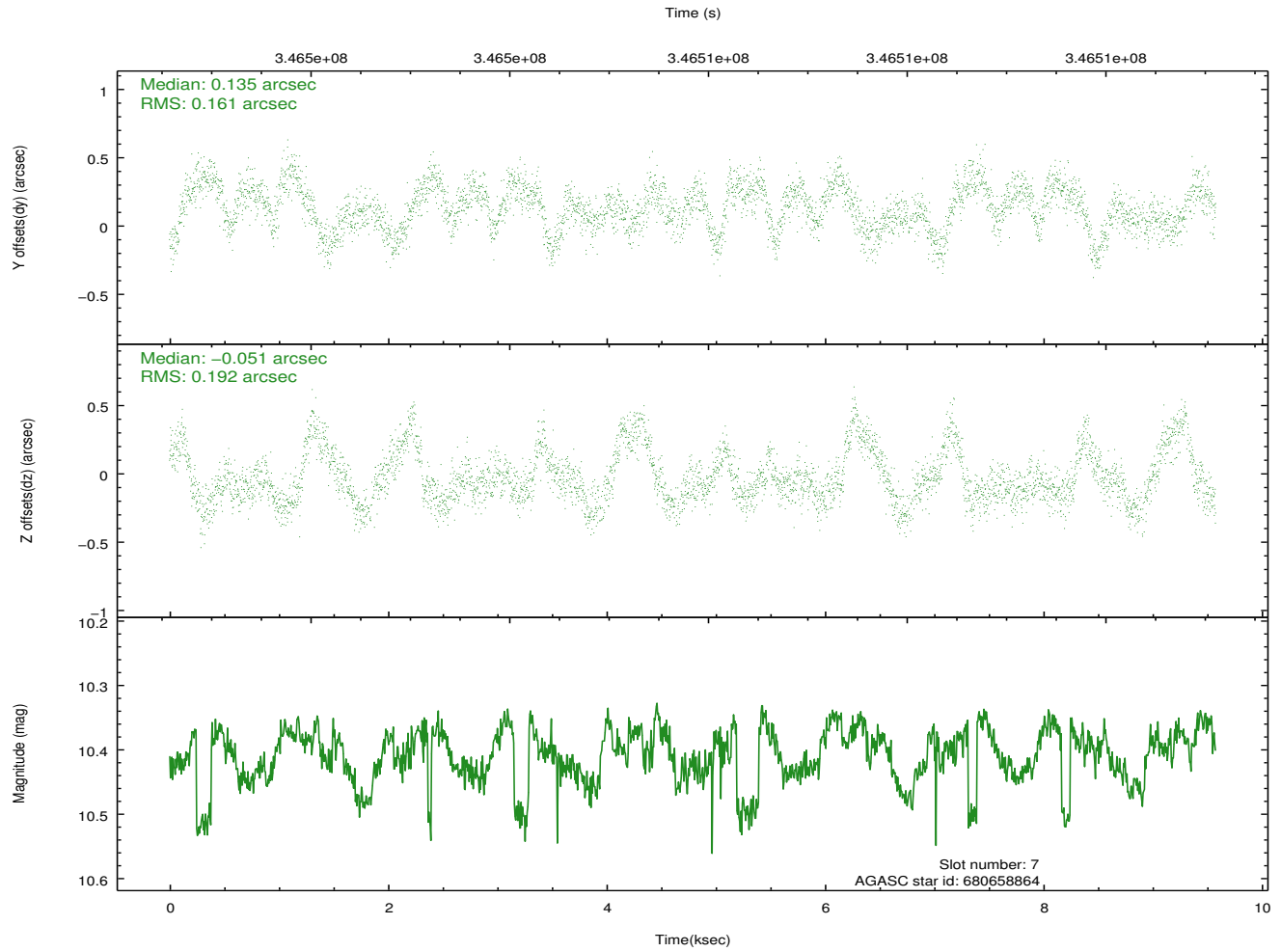
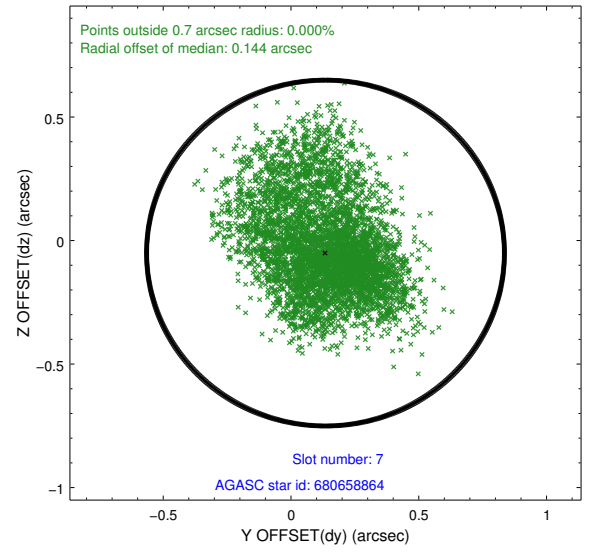
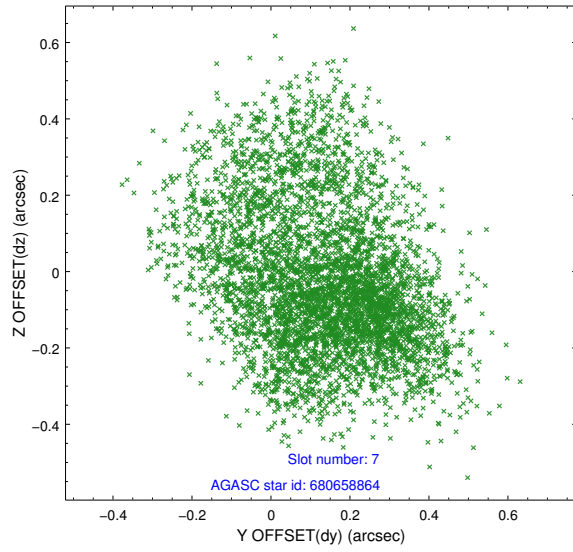
2.4.3 Slot 5



2.4.4 Slot 6

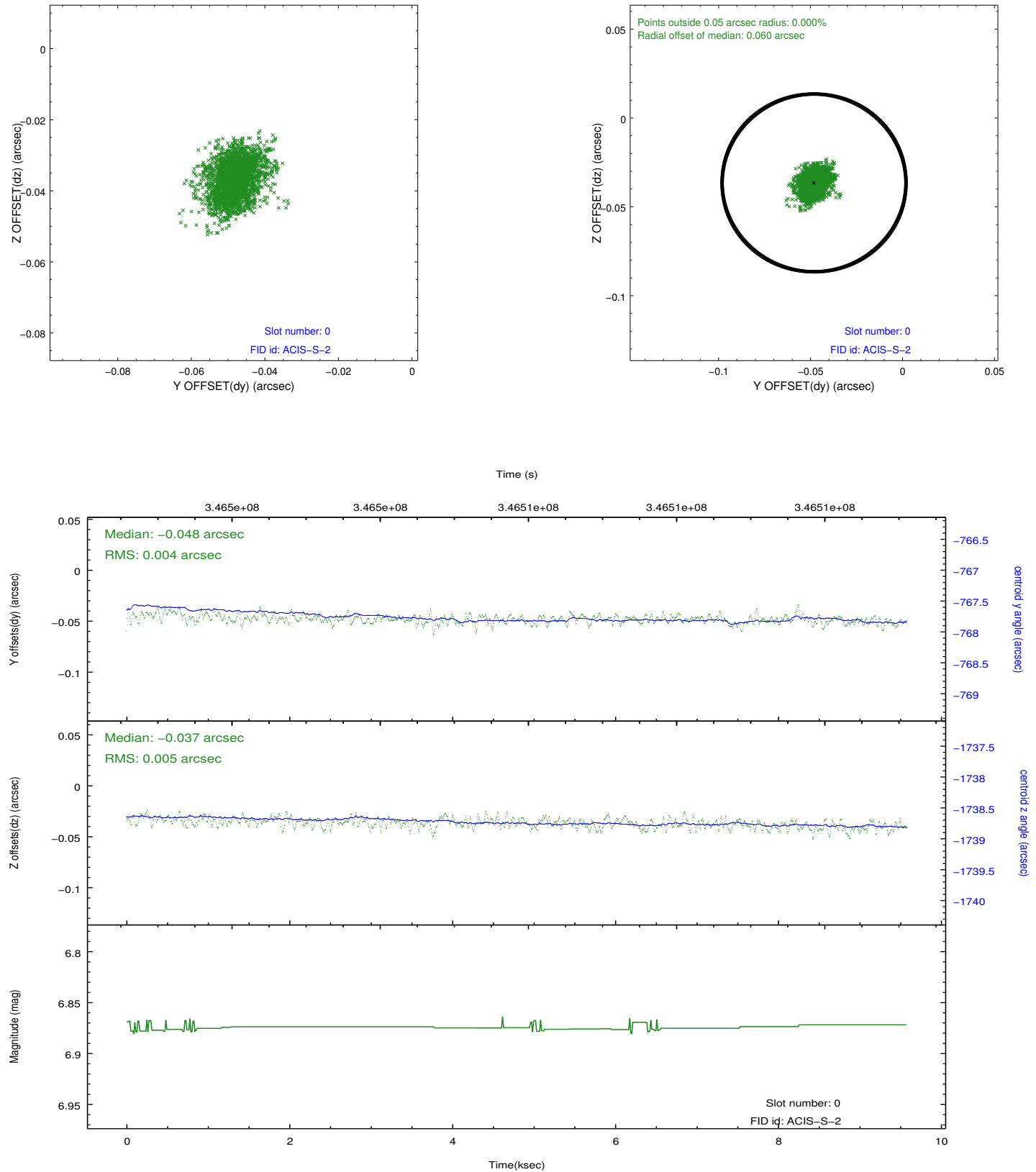


2.4.5 Slot 7

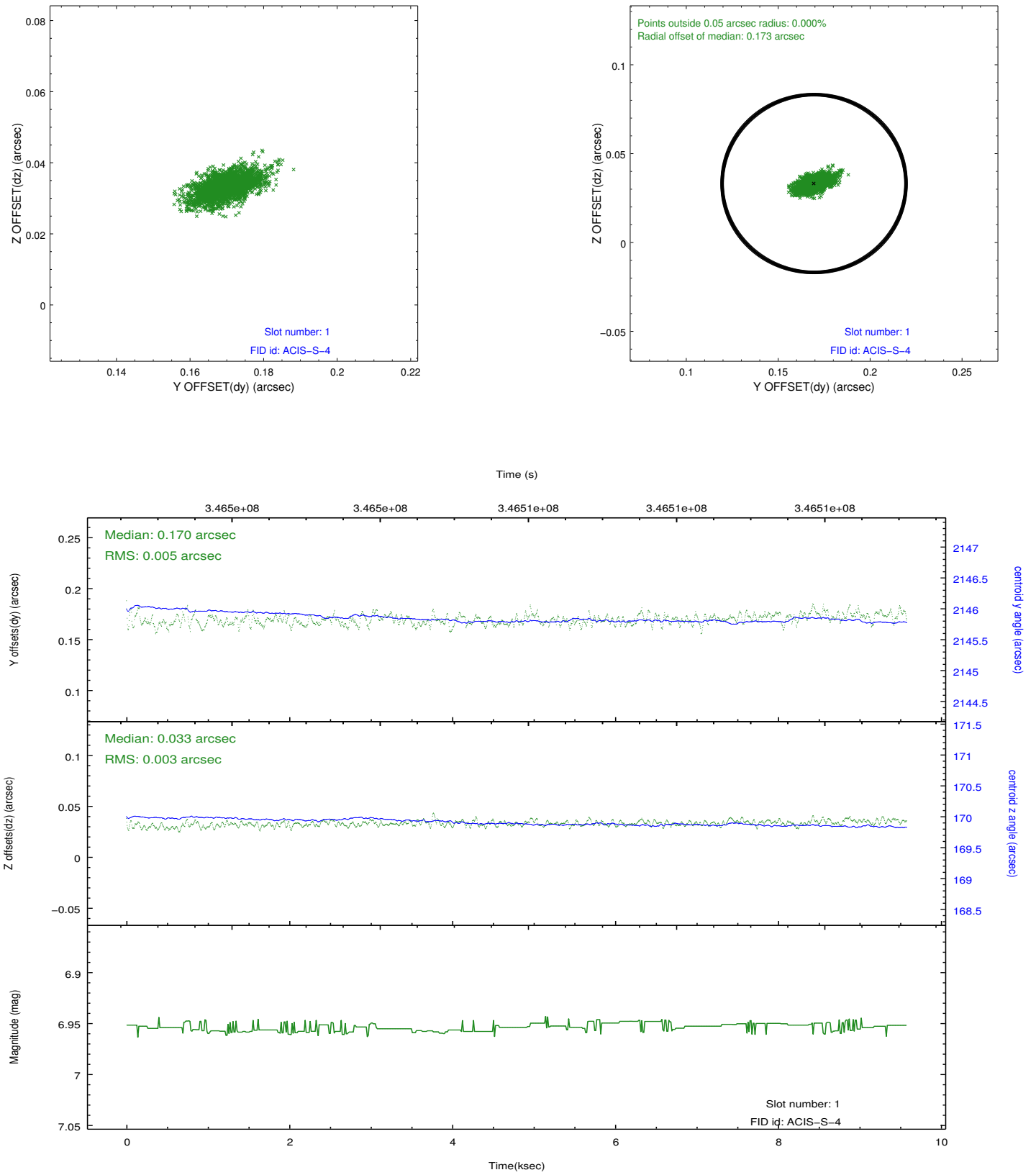


2.5 FID Slots

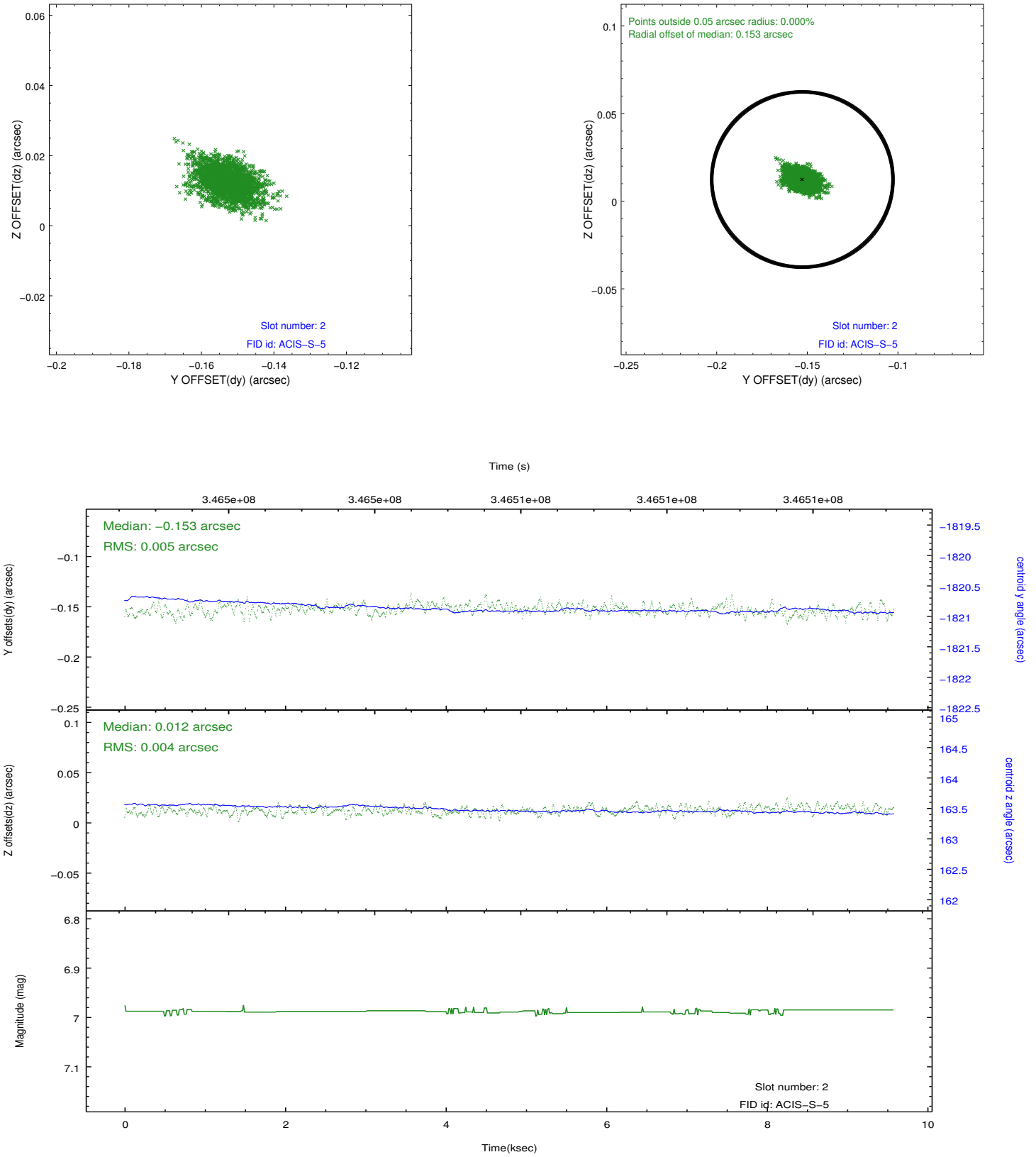
2.5.1 Slot 0



2.5.2 Slot 1



2.5.3 Slot 2



A Summary

A.1 Status

V&V Scientist	Jen Lauer
V&V Date (YYYY-MM-DD)	2012.06.04
V&V Edition	1
V&V Disposition and Status	OK
V&V Charge Time	9.57439996

A.2 Comments