

# V&V Reference Report

## L2 ASCDS Version : 8.4.4

Observation 10268 - L2 Version 2  
Chandra X-Ray Center

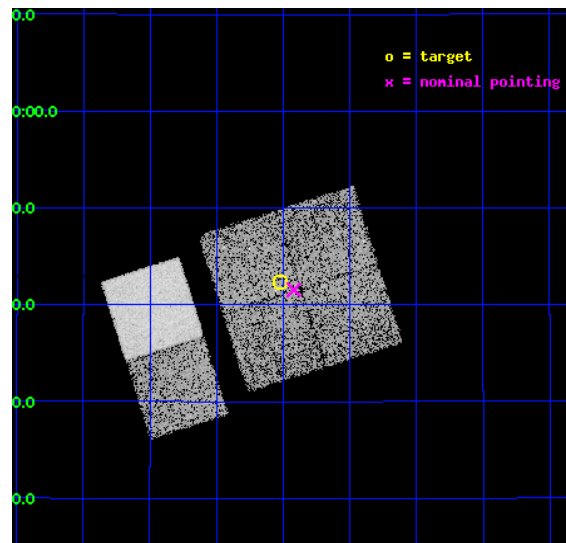
L2 Processing Date : May 31 2012

## Contents

<b>1</b>	<b>Front</b>	<b>2</b>
<b>2</b>	<b>OBI</b>	<b>3</b>
2.1	OBI . . . . .	3
2.1.1	Images . . . . .	3
2.1.2	Bias . . . . .	3
2.1.3	Parameters . . . . .	4
2.1.4	Events . . . . .	4
2.2	Compared Parameters . . . . .	5
2.3	Aspect . . . . .	6
2.4	Star Slots . . . . .	9
2.4.1	Slot 3 . . . . .	9
2.4.2	Slot 4 . . . . .	10
2.4.3	Slot 5 . . . . .	11
2.4.4	Slot 6 . . . . .	12
2.4.5	Slot 7 . . . . .	13
2.5	FID Slots . . . . .	14
2.5.1	Slot 0 . . . . .	14
2.5.2	Slot 1 . . . . .	15
2.5.3	Slot 2 . . . . .	16
<b>A</b>	<b>Summary</b>	<b>17</b>
A.1	Status . . . . .	17
A.2	Comments . . . . .	17

# 1 Front

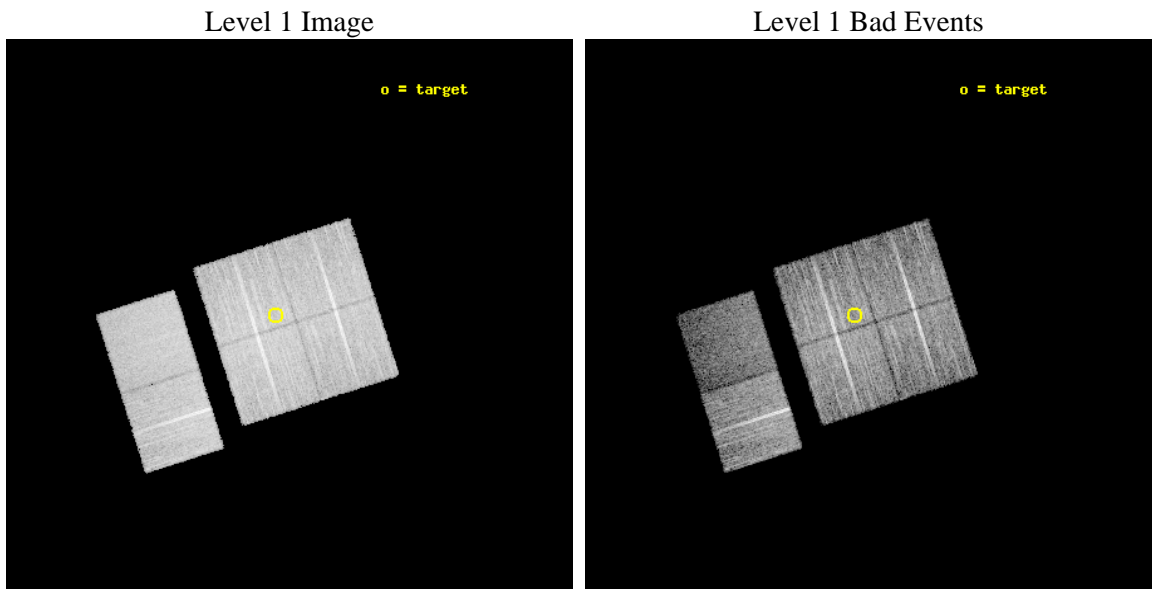
seq_num	701811	Sequence number
obs_id	10268	Observation id
title	Using Chandra and HST to Construct the First Detailed Timeline of Early-Type Galaxy Evolution	Proposal title
observer	Prof. Ann Zabludoff	Principal investigator
object	SDSSJ082701.40+214224.4	Source name
dtcycle	0	&#160
cycle	P	events from which exps? Prim/Second/Both
ra_targ	126.755833	Observer's specified target RA [deg]
dec_targ	21.706778	Observer's specified target Dec [deg]
ra_nom	126.73000960169	Nominal RA [deg]
dec_nom	21.69243027719	Nominal Dec [deg]
roll_nom	252.32626764307	Nominal Roll [deg]
revision	2	Processing version of data
ontime	10150.399962246	Sum of GTIs [s]
livetime	10021.869486087	Livetime [s]
ontime0	10150.399962246	Sum of GTIs [s]
ontime1	10147.159001827	Sum of GTIs [s]
ontime2	10150.399962246	Sum of GTIs [s]
ontime3	10150.399962246	Sum of GTIs [s]
ontime6	10150.399962246	Sum of GTIs [s]
ontime7	10150.399962246	Sum of GTIs [s]
l2events	70195	Number of level 2 events



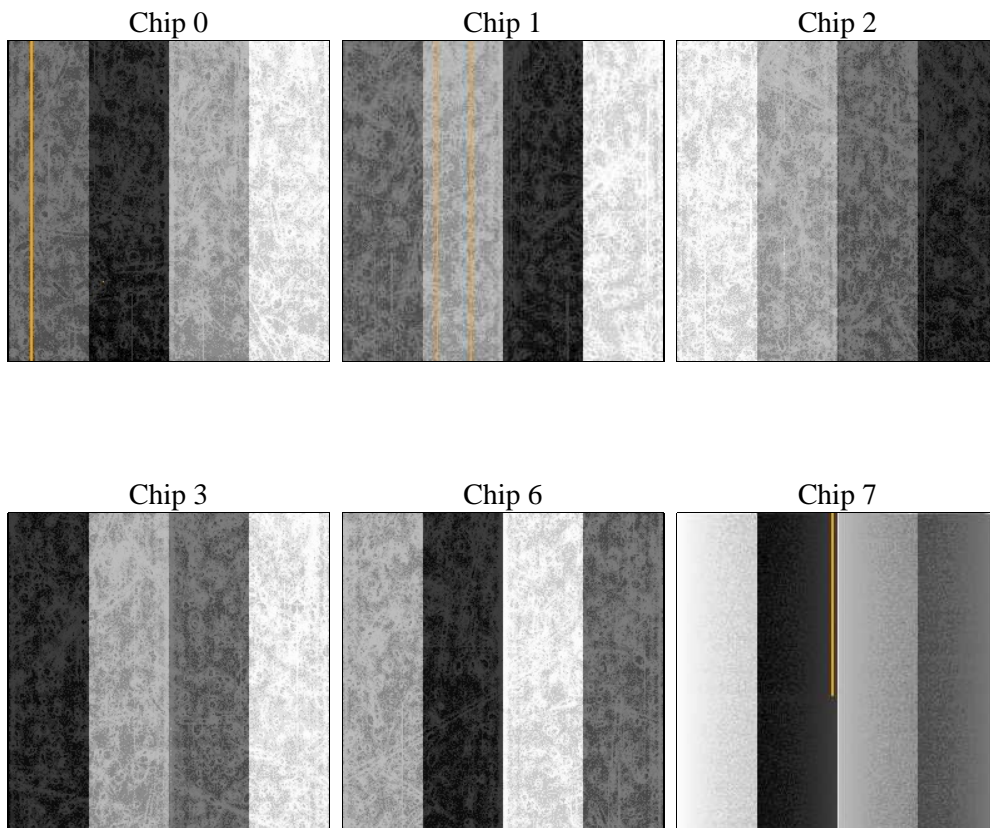
## 2 OBI

### 2.1 OBI

#### 2.1.1 Images



#### 2.1.2 Bias



### 2.1.3 Parameters

obi_num	0	Obi number	sched_exp_time	10000.000000	[s] Scheduled observation exposure time
ascdsver	8.4.4	Processing system revision	ontime	10150.399962246	Sum of GTIs [s]
caldsver	4.4.9	&#160	ontime0	10150.399962246	Sum of GTIs [s]
date	2012-05-31T14:28:08	Date and time of file creation	ontime1	10147.159001827	Sum of GTIs [s]
revision	2	Processing version of data	ontime2	10150.399962246	Sum of GTIs [s]
			ontime3	10150.399962246	Sum of GTIs [s]
			ontime6	10150.399962246	Sum of GTIs [s]
			ontime7	10150.399962246	Sum of GTIs [s]
			l1events	490921	Number of level 1 events

### 2.1.4 Events

	ccd 0	ccd 1	ccd 2	ccd 3	ccd 6	ccd 7		ccd 0	ccd 1	ccd 2	ccd 3	ccd 6	ccd 7
level 1 events	77443	75405	89061	84049	85405	79558	grade 0 events	3048	2984	3098	3142	3074	3913
rejected events	69289	67190	81145	76193	77038	41626		3%	3%	3%	3%	3%	4%
rejected %	89%	89%	91%	90%	90%	52%	grade 1 events	41	37	55	47	45	106
								0%	0%	0%	0%	0%	0%
							grade 2 events	1982	1942	1970	1740	2008	8310
								2%	2%	2%	2%	2%	10%
							grade 3 events	901	980	867	882	921	3611
								1%	1%	0%	1%	1%	4%
							grade 4 events	890	895	864	873	925	3572
								1%	1%	0%	1%	1%	4%
							grade 5 events	2546	2713	2385	2975	2960	8401
								3%	3%	2%	3%	3%	10%
							grade 6 events	1597	1725	1380	1484	1700	19802
								2%	2%	1%	1%	1%	24%
							grade 7 events	66438	64129	78442	72906	73772	31843
								85%	85%	88%	86%	86%	40%

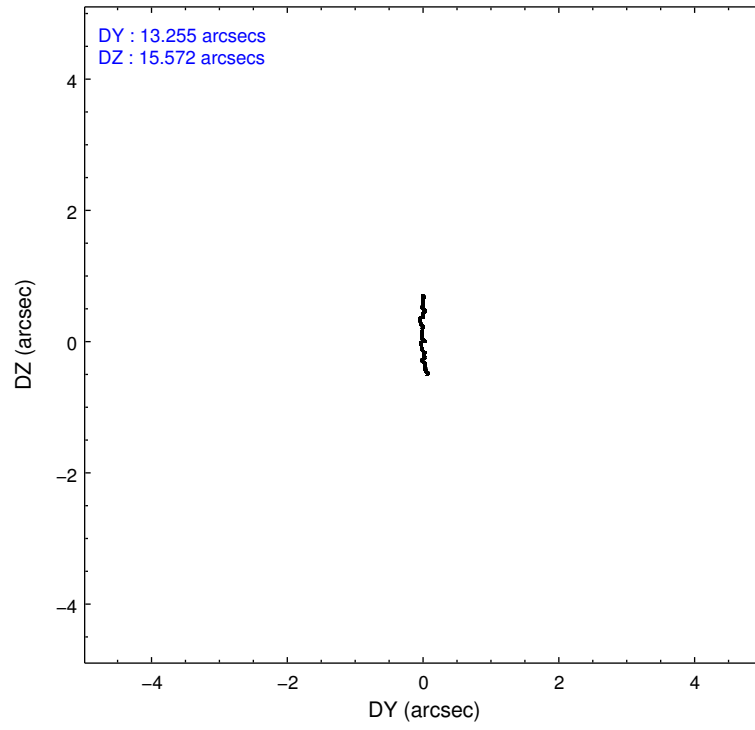
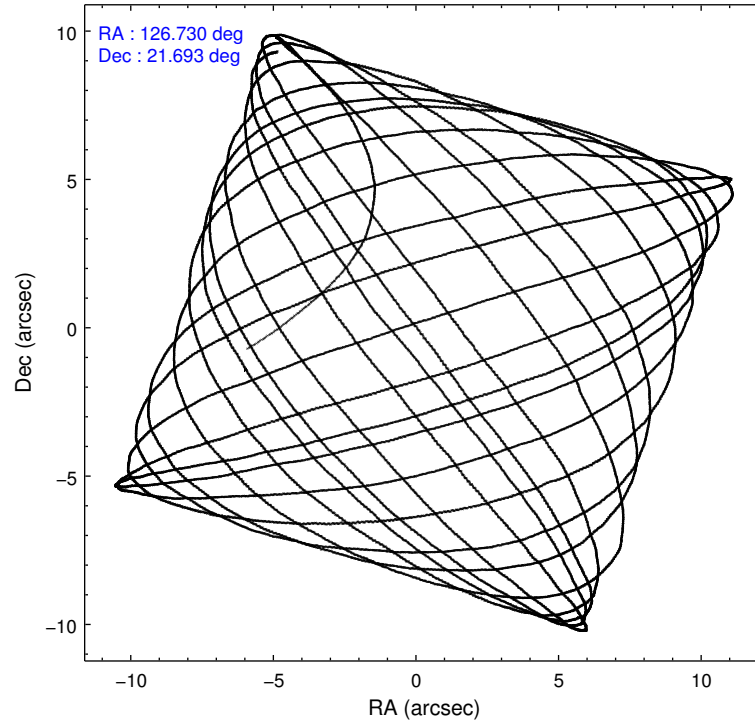


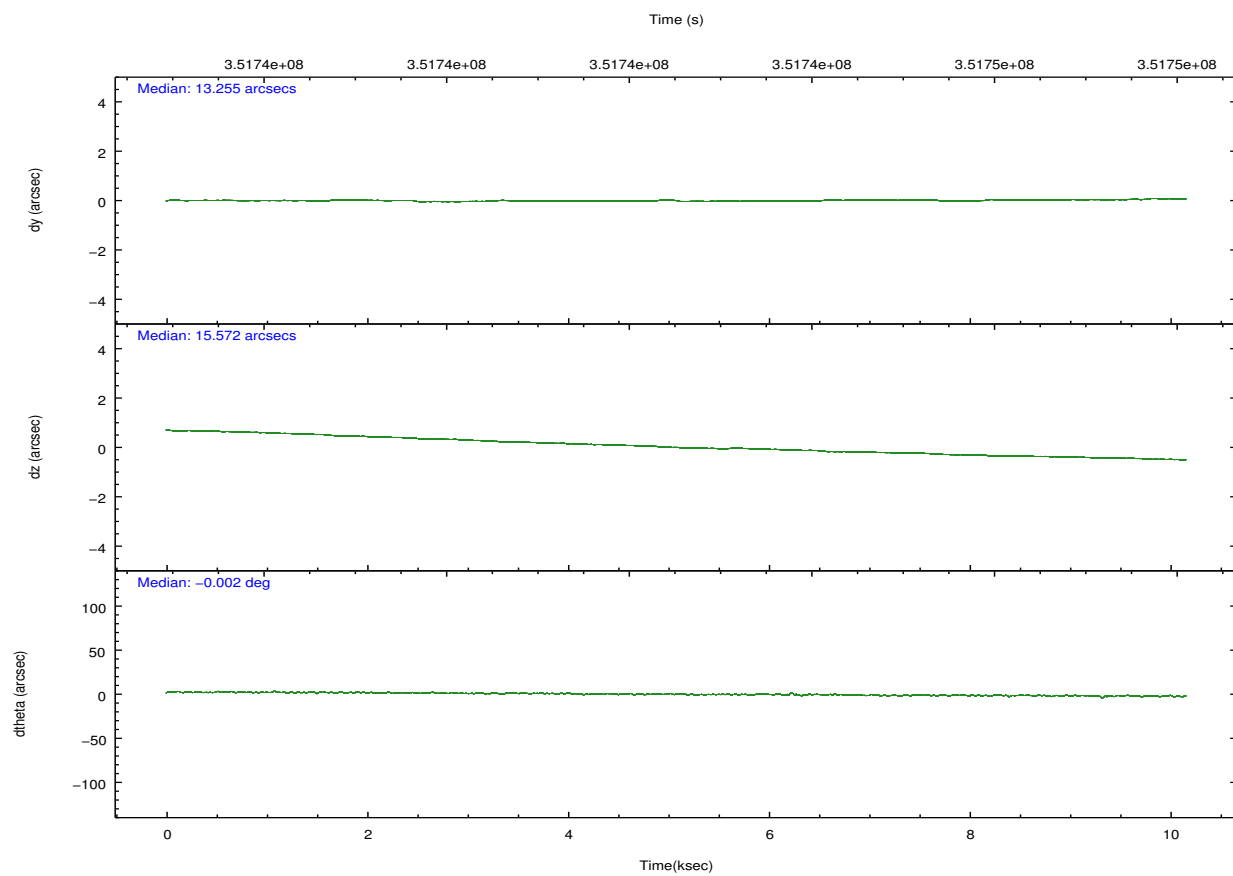
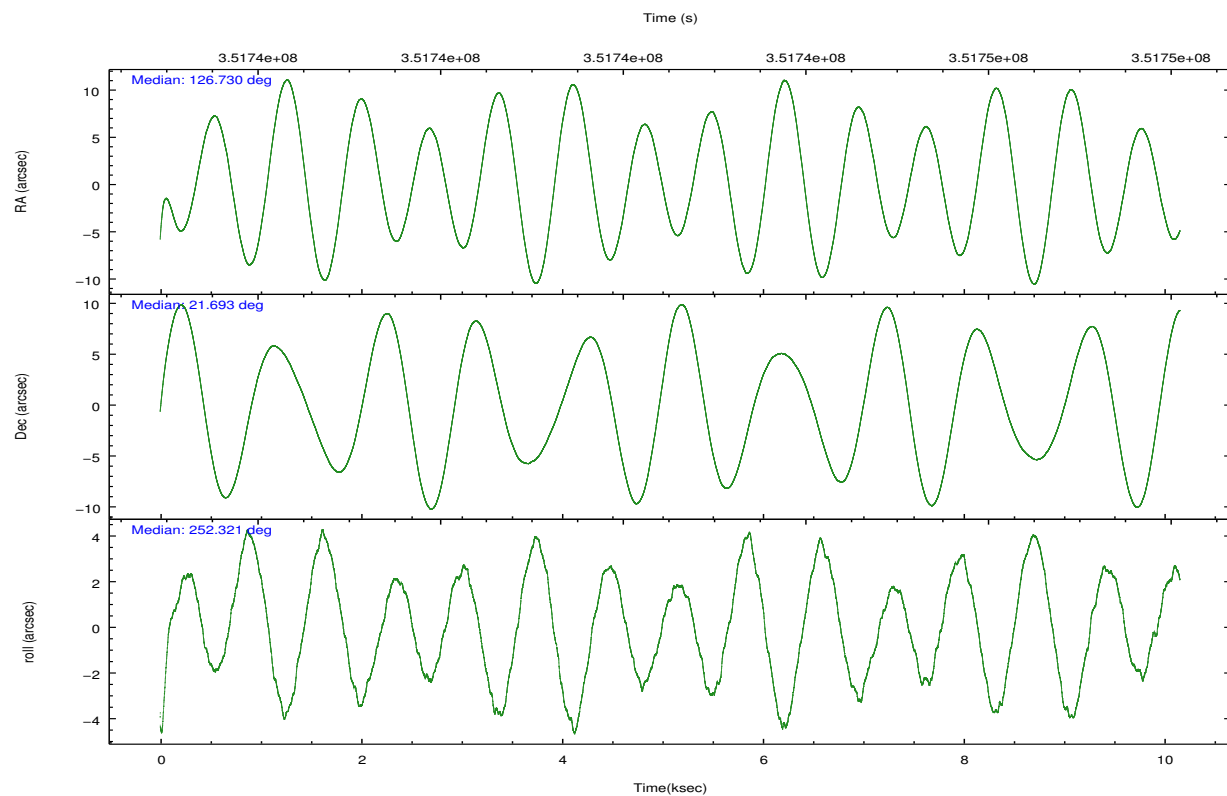
## 2.2 Compared Parameters

Parameter	Planned	Actual
Instrument	ACIS	ACIS
Detector	ACIS-012367	ACIS-012367
Grating	NONE	NONE
Data mode	FAINT	FAINT
Observation mode	POINTING	POINTING
[deg] Pointing RA	126.723597	126.7300096016901
[deg] Pointing Dec	21.719251	21.69243027719033
[deg] Pointing Roll	252.119953	252.3262676430743
[mm] SIM focus pos	-0.782348	-0.7809083437167272
[mm] SIM defocus	0	0.001439871863259334
[mm] SIM translation stage pos	-233.592463	-233.5874344608287
[mm] SIM translation stage offset	0	-0.005018542100998502
[s] Observation start time (MET)	351737587.184000	351736361.8246
Observation start date	2009-02-23T00:52:01	2009-02-23T00:32:41
[s] Observation end time (MET)	351747587.184000	351748948.31273
Observation end date	2009-02-23T03:38:41	2009-02-23T04:02:28
Read mode	TIMED	TIMED

Parameter	Planned	Actual
Obspar format version number	7	7
Obspar file type	PREDICTED	ACTUAL
Obspar update status	NONE	UPDATED
CCD I0 on	Y	Y
CCD I1 on	Y	Y
CCD I2 on	Y	Y
CCD I3 on	Y	Y
CCD S0 on	N	N
CCD S1 on	N	N
CCD S2 on	O1	Y
CCD S3 on	O2	Y
CCD S4 on	N	N
CCD S5 on	N	N
Number of optional ACIS chips dropped	0	0
On-chip summing requested	N	N
Subarray requested	NONE	NONE
Alternating exposures requested	N	N
[s] Primary exposure time	0.000000	3.2

## 2.3 Aspect



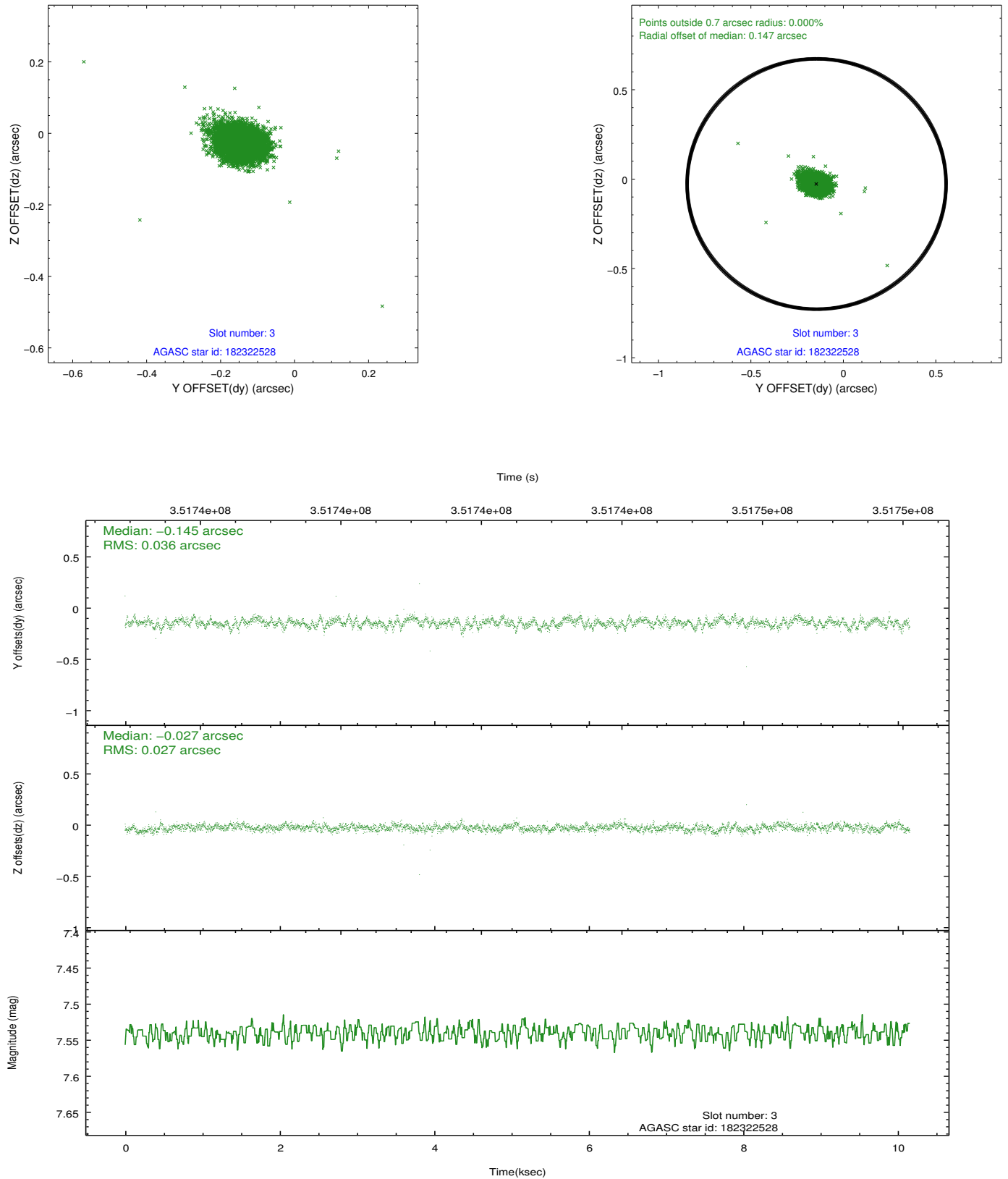


### Slot Statistics

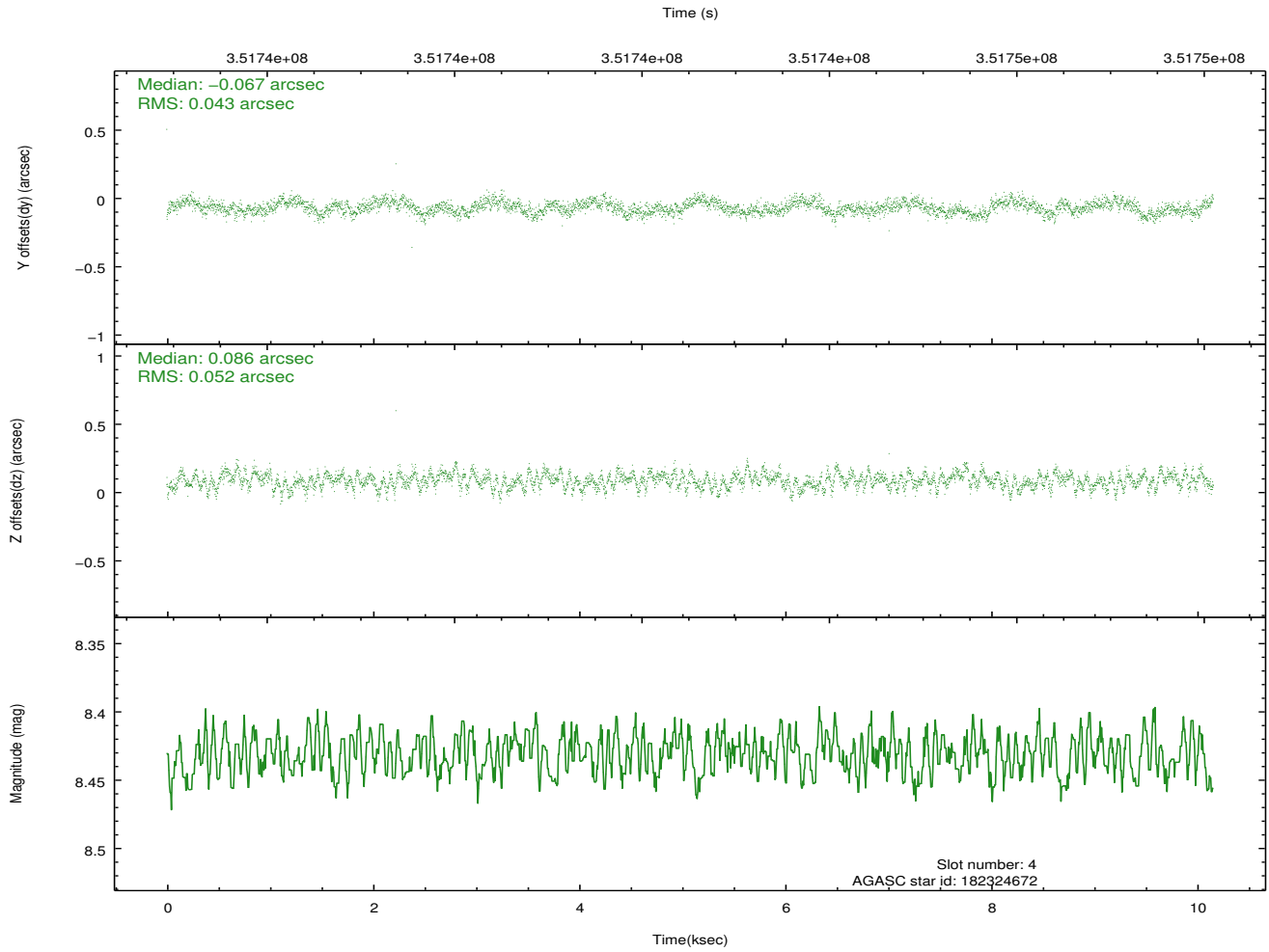
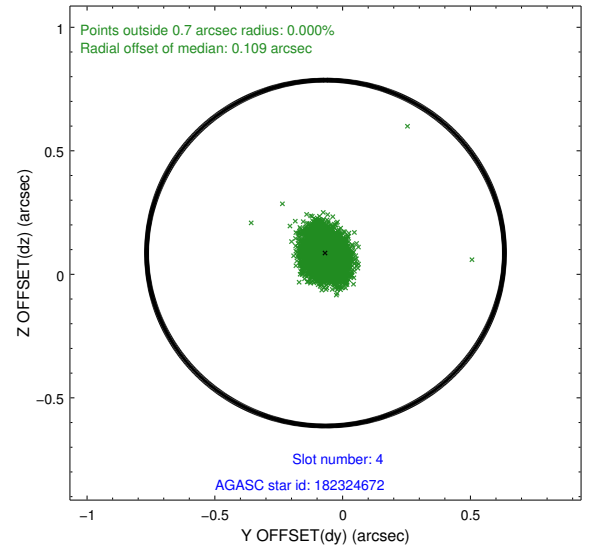
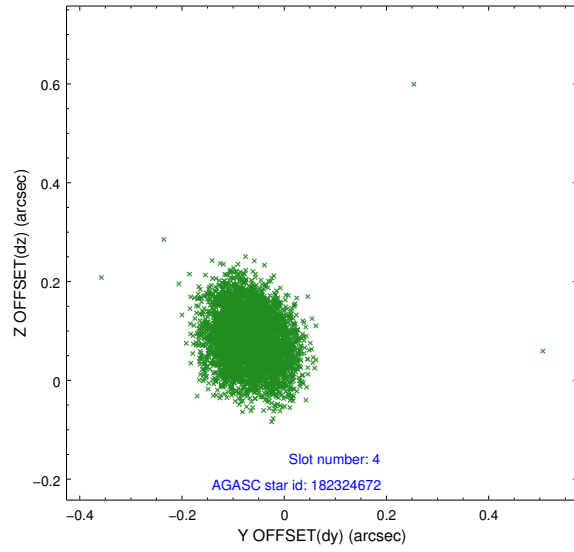
slot	status	id	mag	n_pts	med_dy	med_dz	dr1	dr2	ra	dec	mean_y	mean_z
0	FID	ACIS-I-1	7.02	2478	0.036	-0.015	0.019	0.028	0.000000	0.000000	926.28	-839.26
1	FID	ACIS-I-5	7.02	2478	-0.190	0.045	0.011	0.019	0.000000	0.000000	-1821.76	1058.04
2	FID	ACIS-I-6	7.02	2478	0.062	0.040	0.011	0.018	0.000000	0.000000	391.29	1703.12
3	GUIDE	182322528	7.54	4955	-0.145	-0.027	0.046	0.075	127.486460	22.029849	-1851.82	2077.81
4	GUIDE	182324672	8.43	4952	-0.067	0.086	0.072	0.116	126.330833	22.353388	-1772.68	-1945.34
5	GUIDE	182326096	9.33	4947	-0.009	0.025	0.095	0.157	126.208179	21.812453	207.19	-1742.95
6	GUIDE	182332968	8.69	4950	0.120	0.107	0.086	0.140	126.434106	21.190606	2109.33	-340.51
7	GUIDE	182327928	9.25	4948	0.101	-0.192	0.086	0.137	126.667288	21.285009	1546.58	300.44

## 2.4 Star Slots

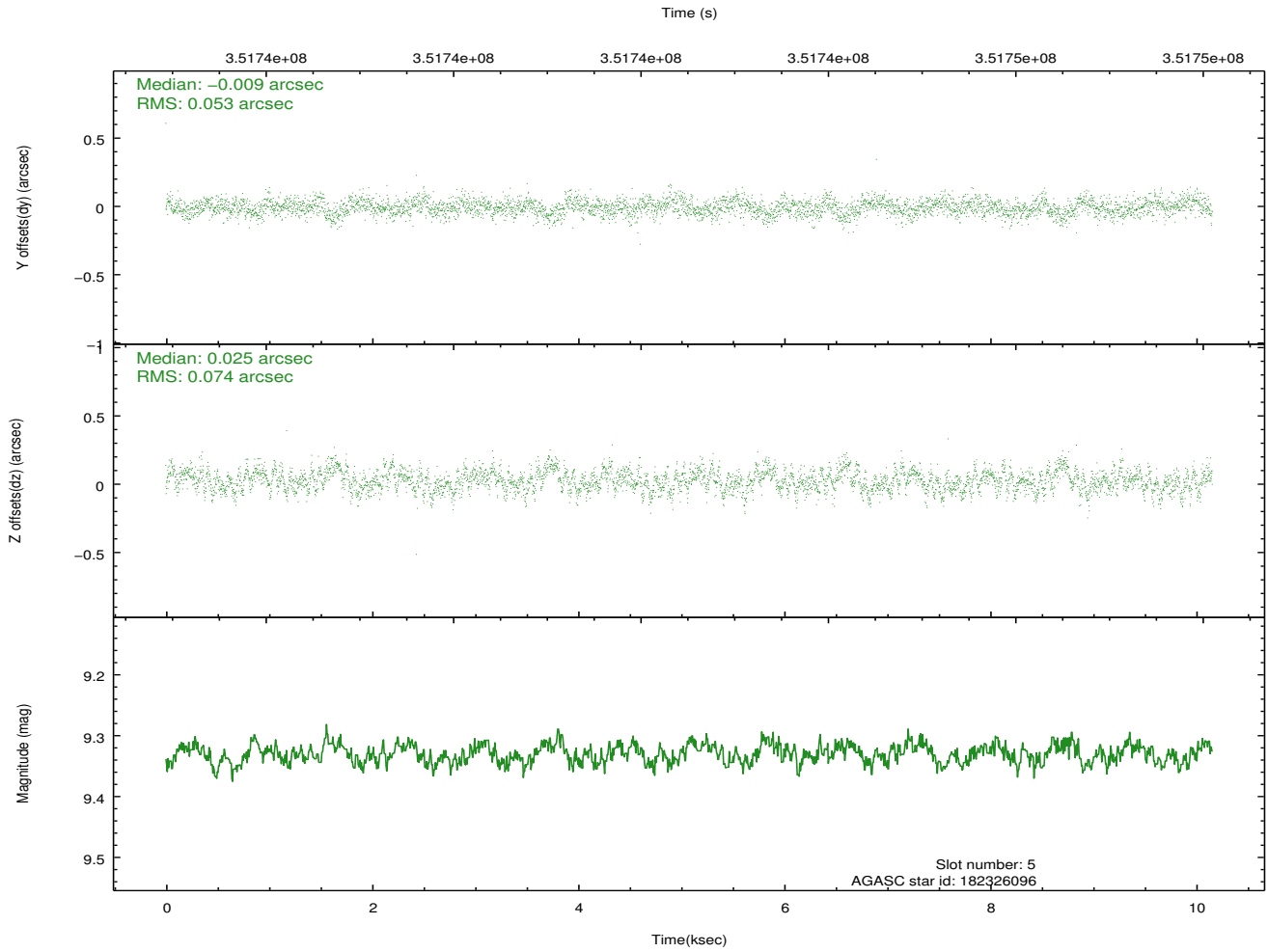
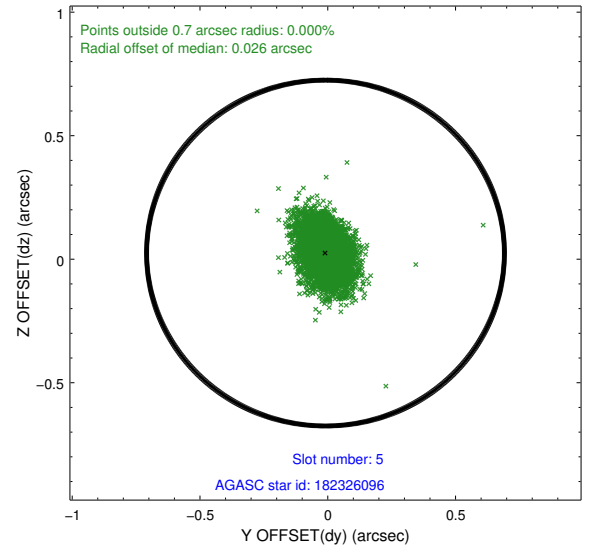
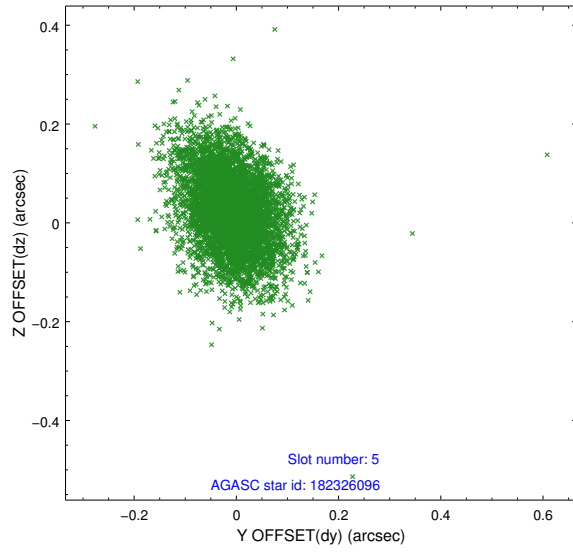
### 2.4.1 Slot 3



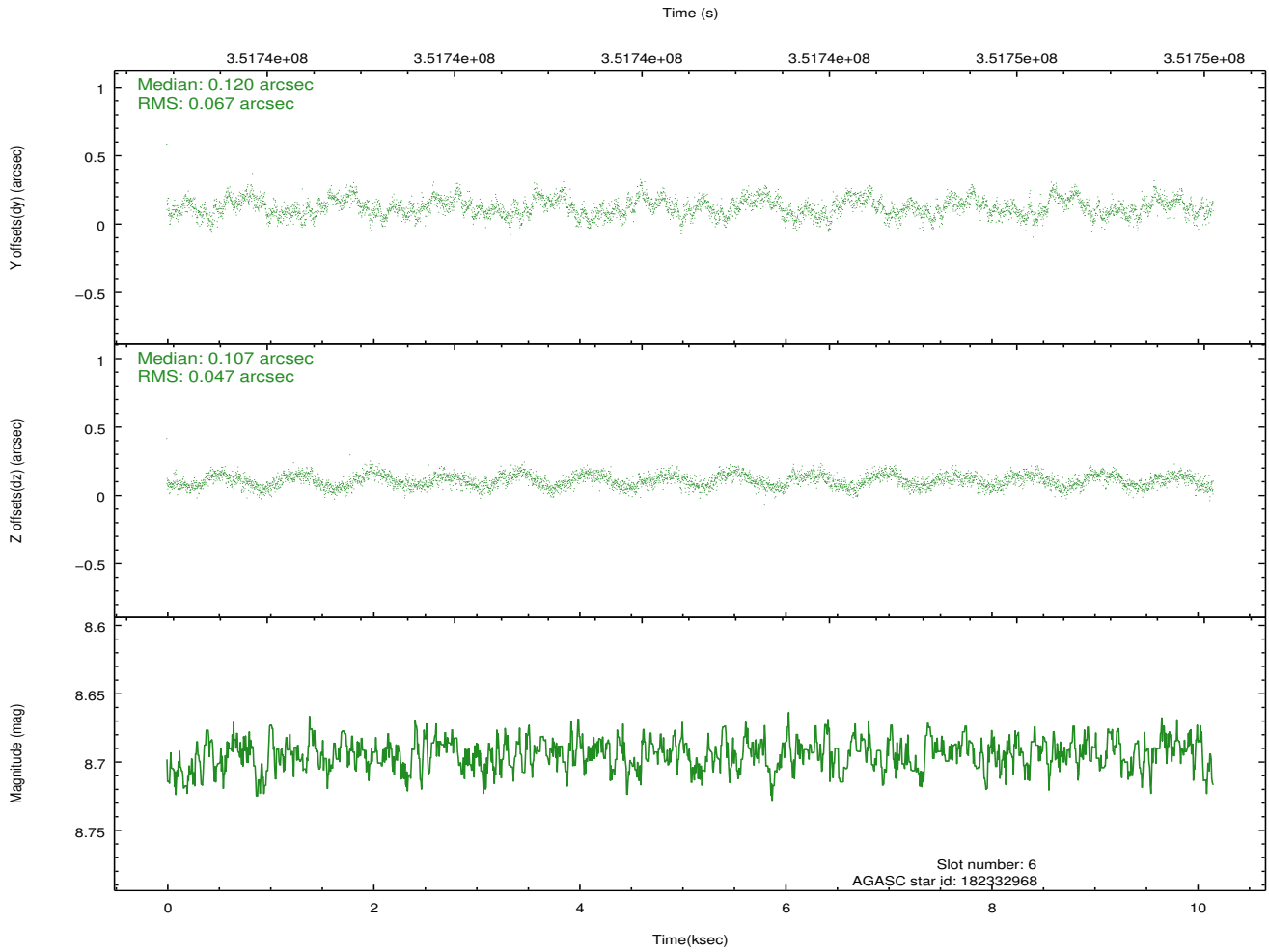
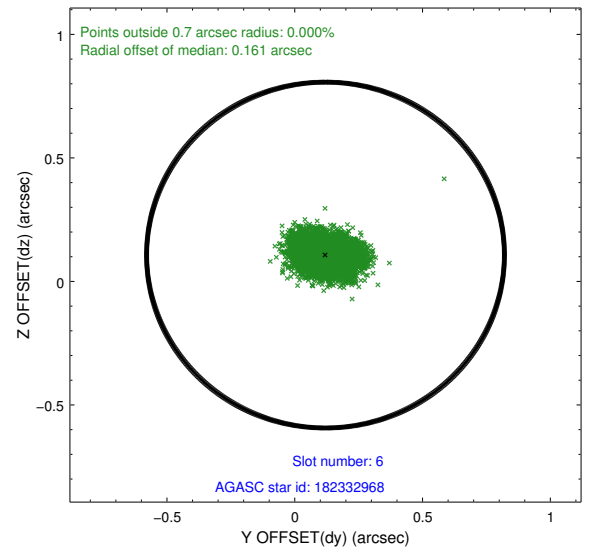
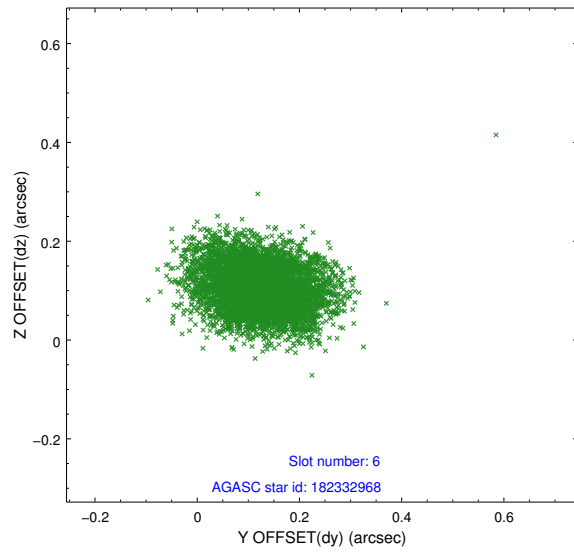
## 2.4.2 Slot 4



### 2.4.3 Slot 5

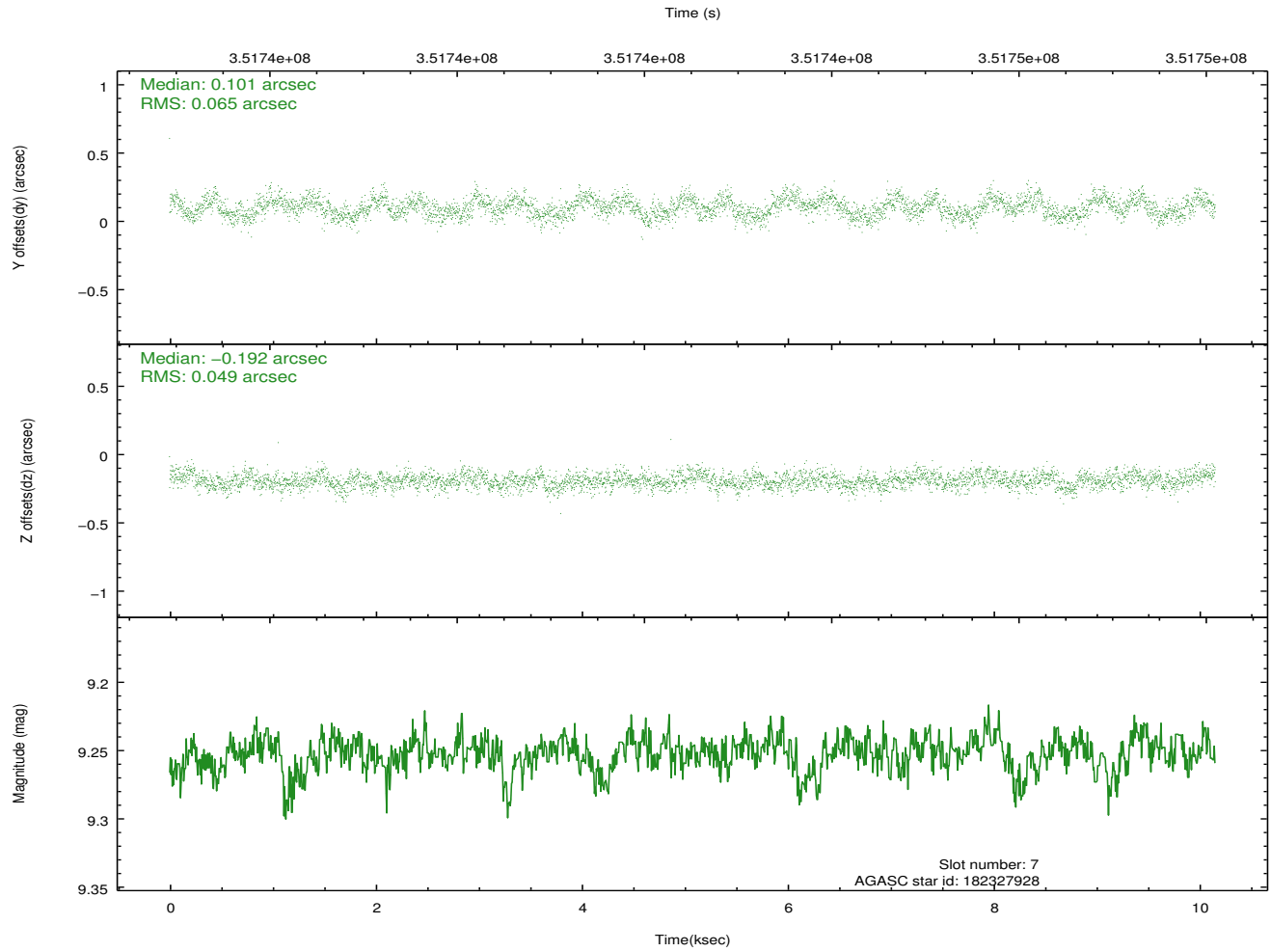
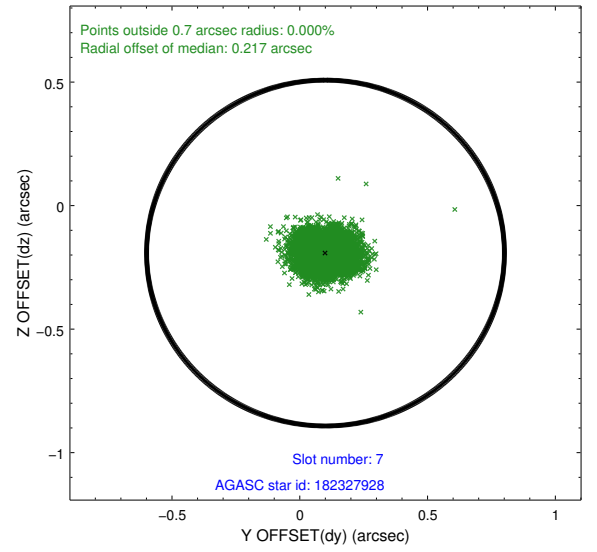
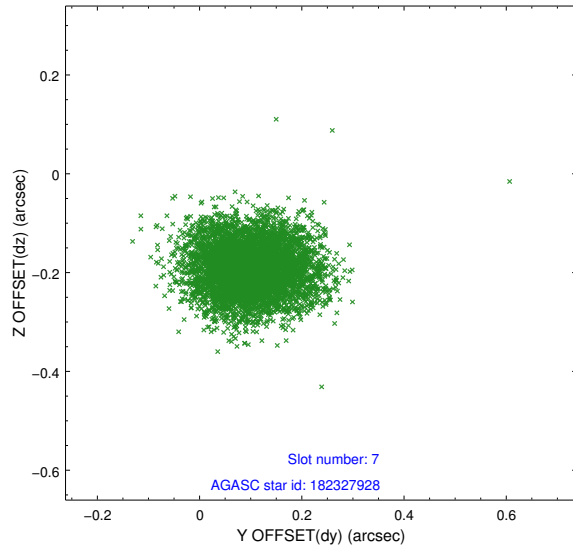


## 2.4.4 Slot 6



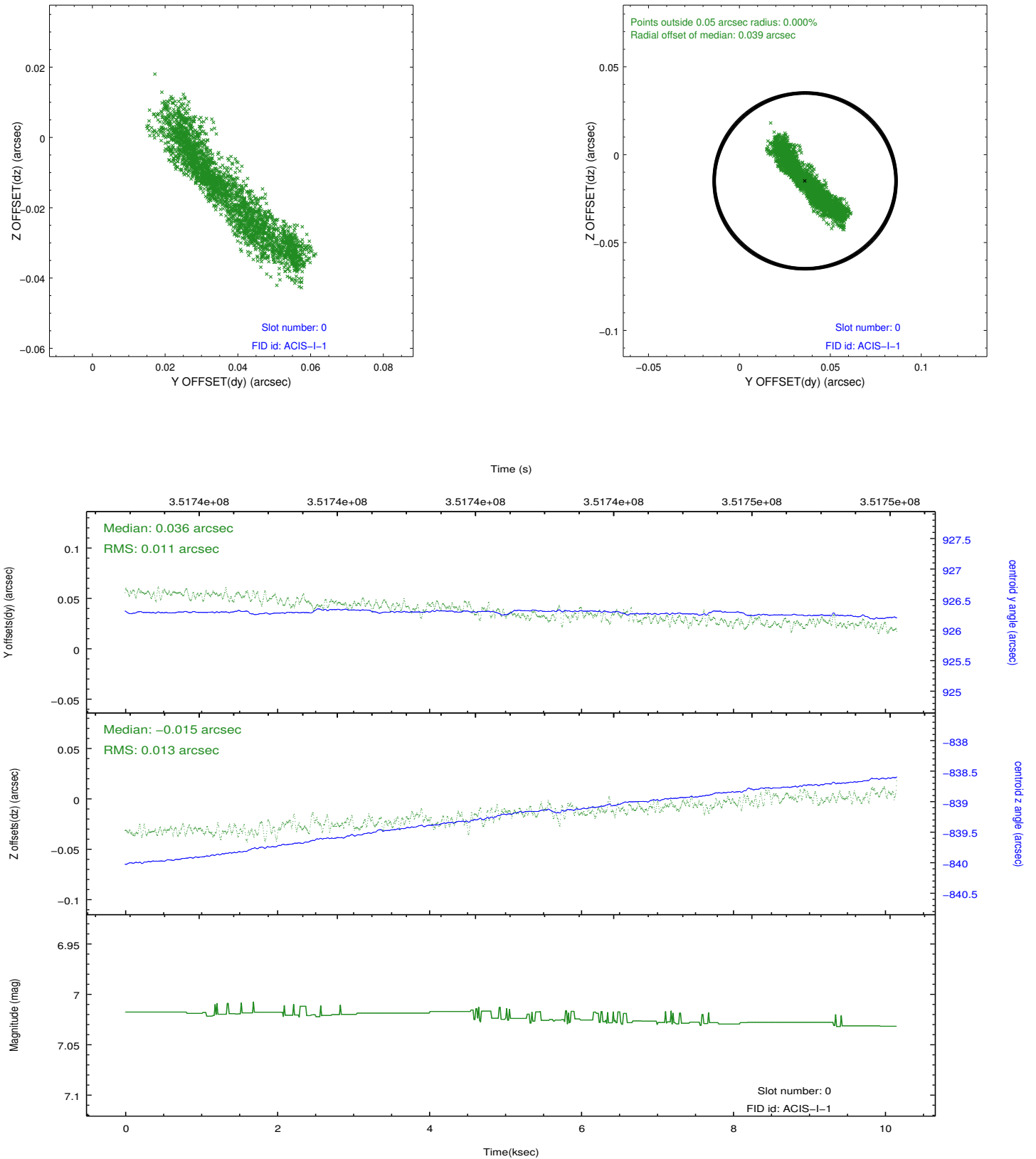


## 2.4.5 Slot 7

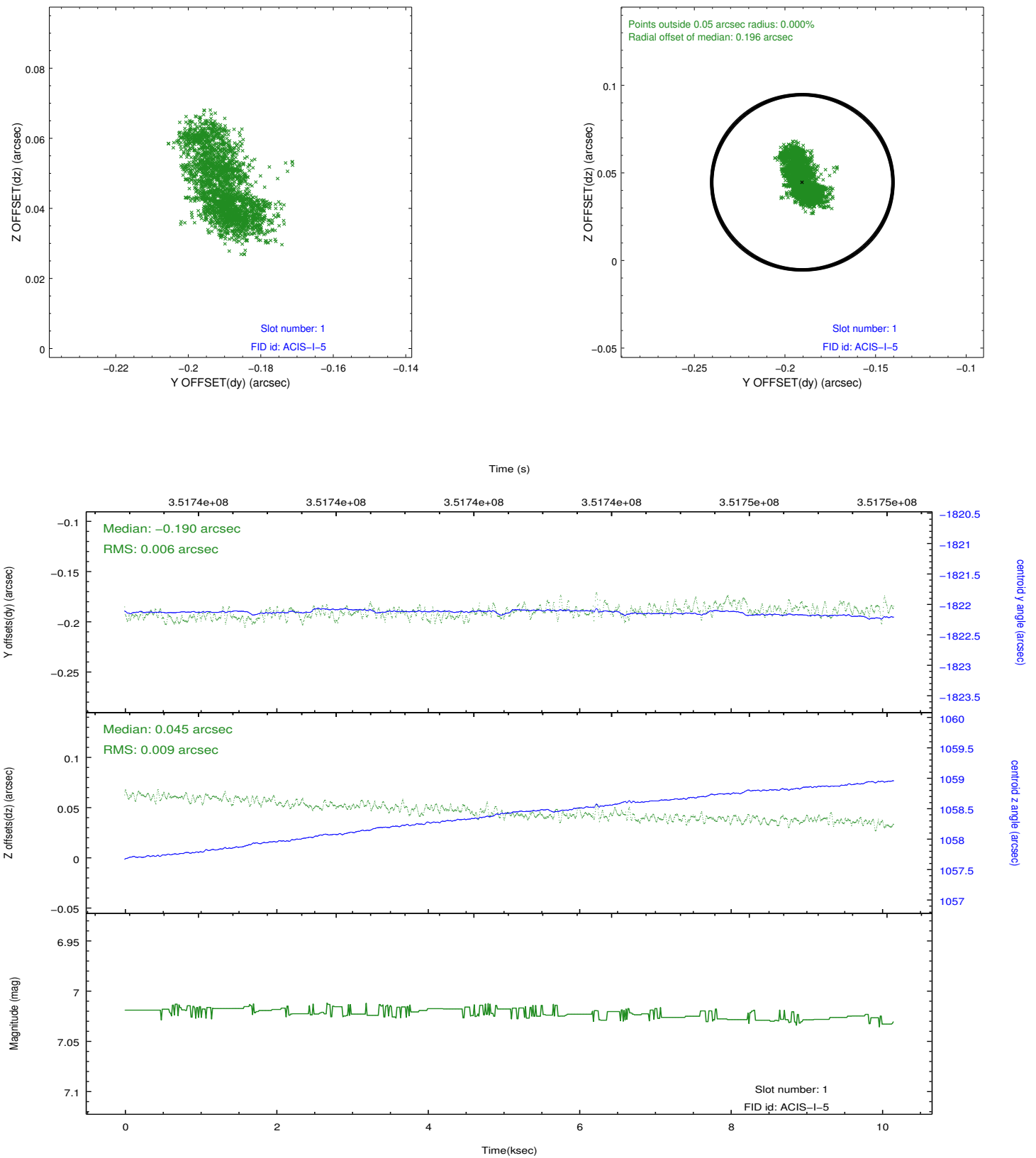


## 2.5 FID Slots

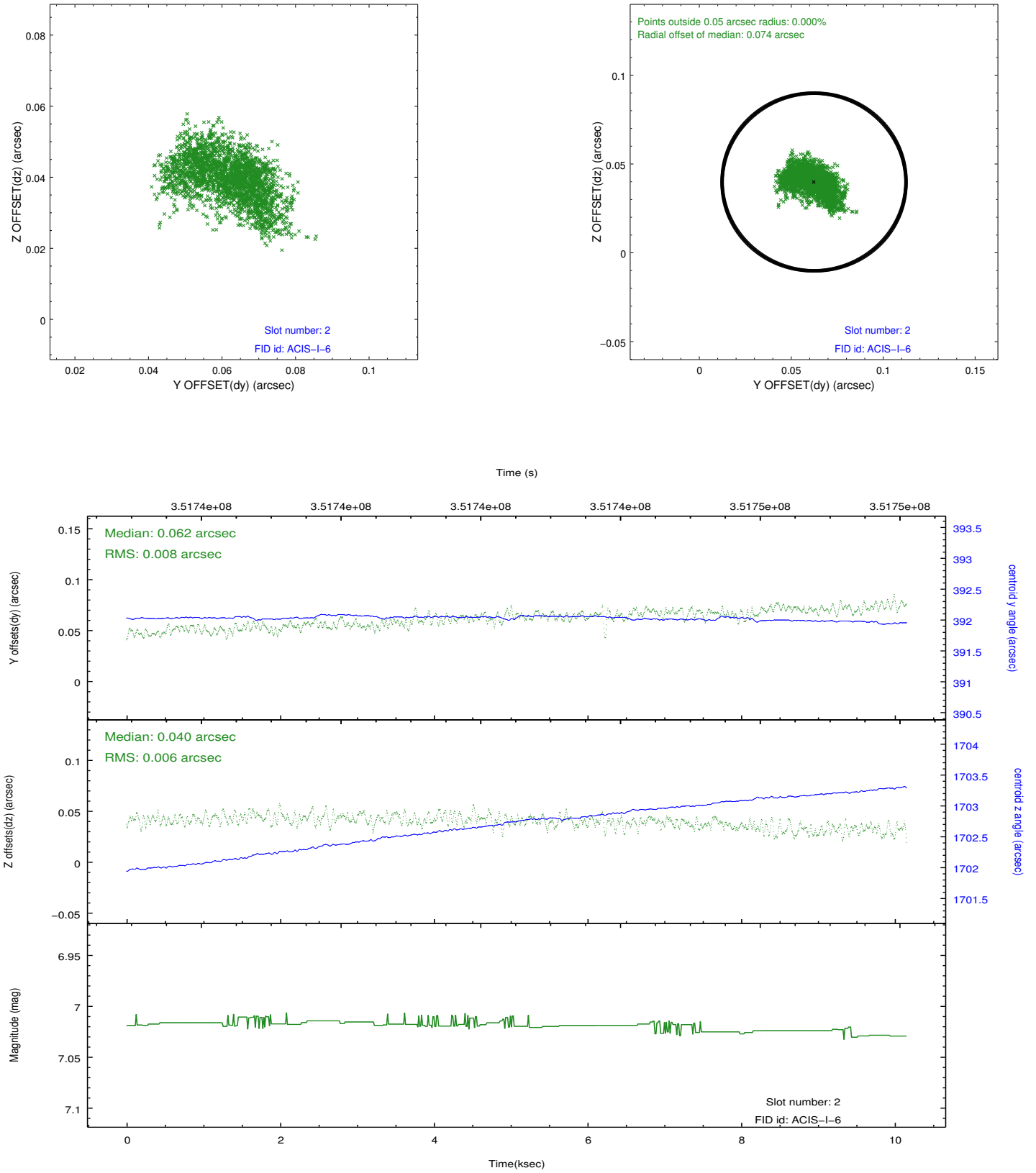
### 2.5.1 Slot 0



## 2.5.2 Slot 1



### 2.5.3 Slot 2



# A Summary

## A.1 Status

V&V Scientist	Beth Sundheim
V&V Date (YYYY-MM-DD)	2012.06.05
V&V Edition	1
V&V Disposition and Status	OK
V&V Charge Time	10.1503999

## A.2 Comments

Joint proposal with HST.