

V&V Reference Report

L2 ASCDS Version : 8.4.4

Observation 9937 - L2 Version 2
Chandra X-Ray Center

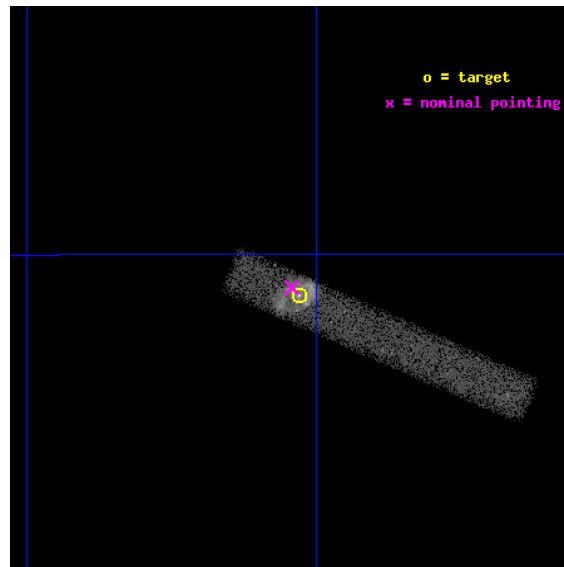
L2 Processing Date : Jun 1 2012

Contents

1	Front	2
2	OBI	3
2.1	OBI	3
2.1.1	Images	3
2.1.2	Bias	3
2.1.3	Parameters	4
2.1.4	Events	4
2.2	Compared Parameters	5
2.3	Aspect	6
2.4	Star Slots	9
2.4.1	Slot 3	9
2.4.2	Slot 4	10
2.4.3	Slot 5	11
2.4.4	Slot 6	12
2.4.5	Slot 7	13
2.5	FID Slots	14
2.5.1	Slot 0	14
2.5.2	Slot 1	15
2.5.3	Slot 2	16
A	Summary	17
A.1	Status	17
A.2	Comments	17

1 Front

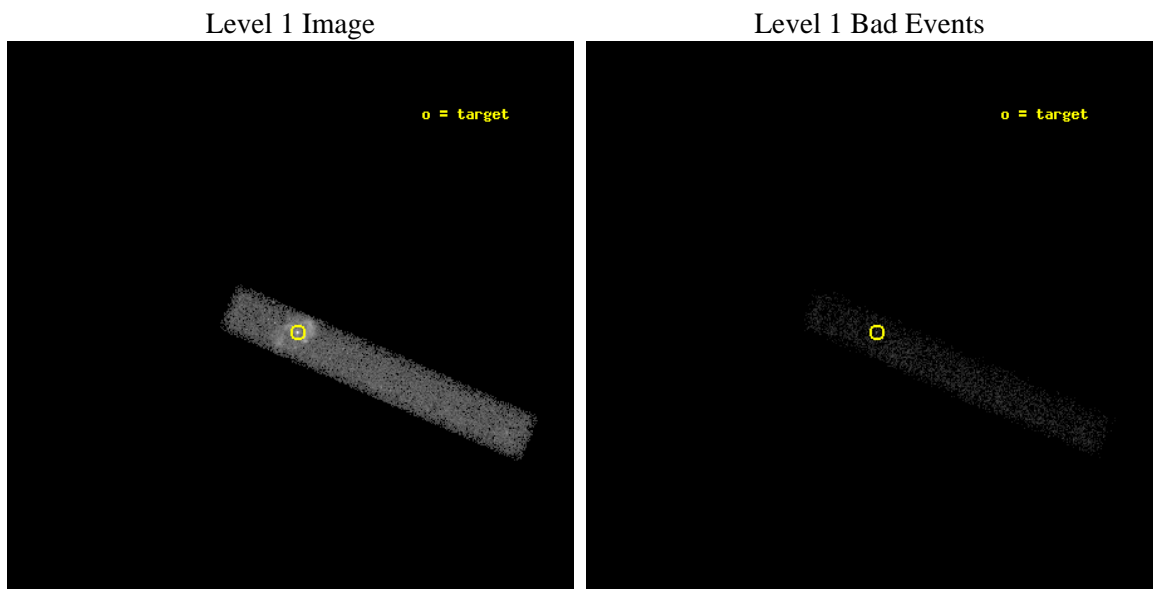
seq_num	200553	Sequence number
obs_id	9937	Observation id
title	X-ray Monitoring of Eta Car in 2009: Unveiling the Deep X-ray Minimum	Proposal title
observer	Dr. Kenji Hamaguchi	Principal investigator
object	Eta Carinae	Source name
dtcycle	0	
cycle	P	events from which exps? Prim/Second/Both
ra_targ	161.265	Observer's specified target RA [deg]
dec_targ	-59.6845	Observer's specified target Dec [deg]
ra_nom	161.27111118214	Nominal RA [deg]
dec_nom	-59.681271330748	Nominal Dec [deg]
roll_nom	23.657898001374	Nominal Roll [deg]
revision	2	Processing version of data
ontime	13809.1274122	Sum of GTIs [s]
livetime	12524.149657355	Livetime [s]
ontime7	13809.1274122	Sum of GTIs [s]
l2events	24167	Number of level 2 events



2 OBI

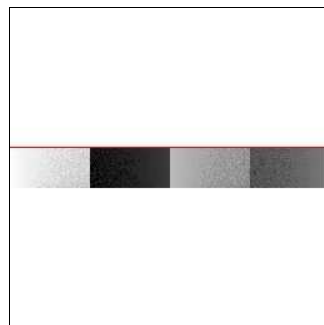
2.1 OBI

2.1.1 Images



2.1.2 Bias

Chip 7



2.1.3 Parameters

obi_num	0	Obi number	sched_exp_time	13800.000000	[s] Scheduled observation exposure time
ascdsver	8.4.4	Processing system revision	ontime	13809.1274122	Sum of GTIs [s]
caldsver	4.4.9	 	ontime7	13809.1274122	Sum of GTIs [s]
date	2012-06-01T05:59:29	Date and time of file creation	l1events	38773	Number of level 1 events
revision	2	Processing version of data			

2.1.4 Events

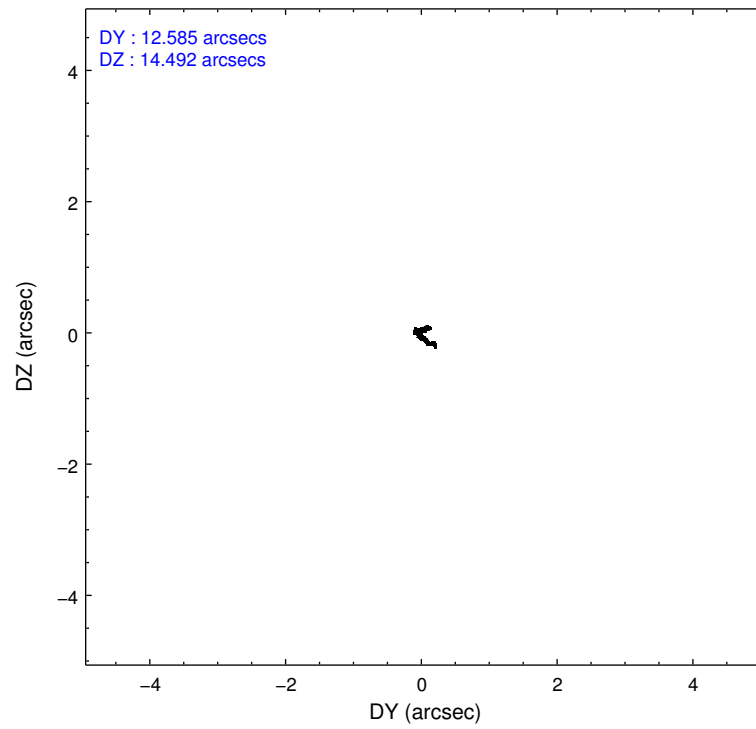
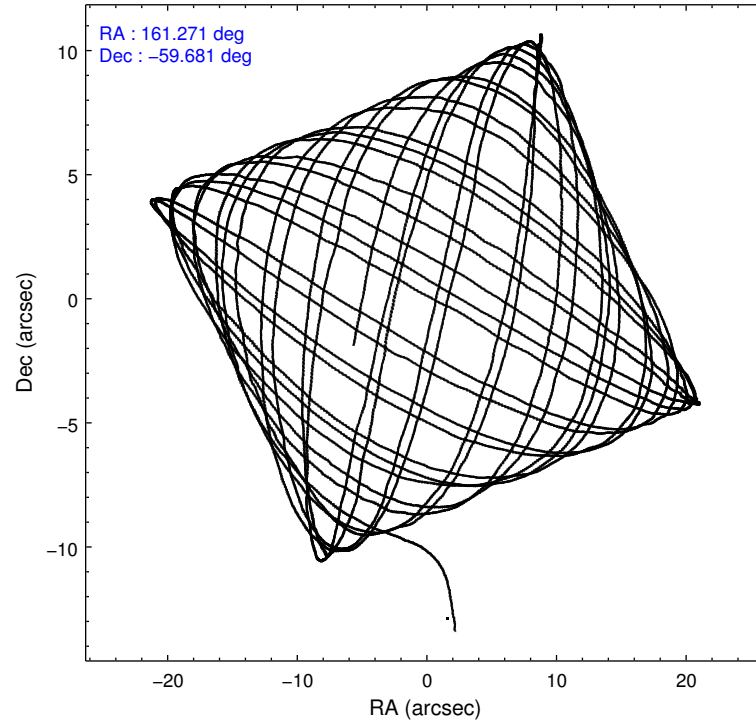
	ccd 7
level 1 events	38773
rejected events	13991
rejected %	36%

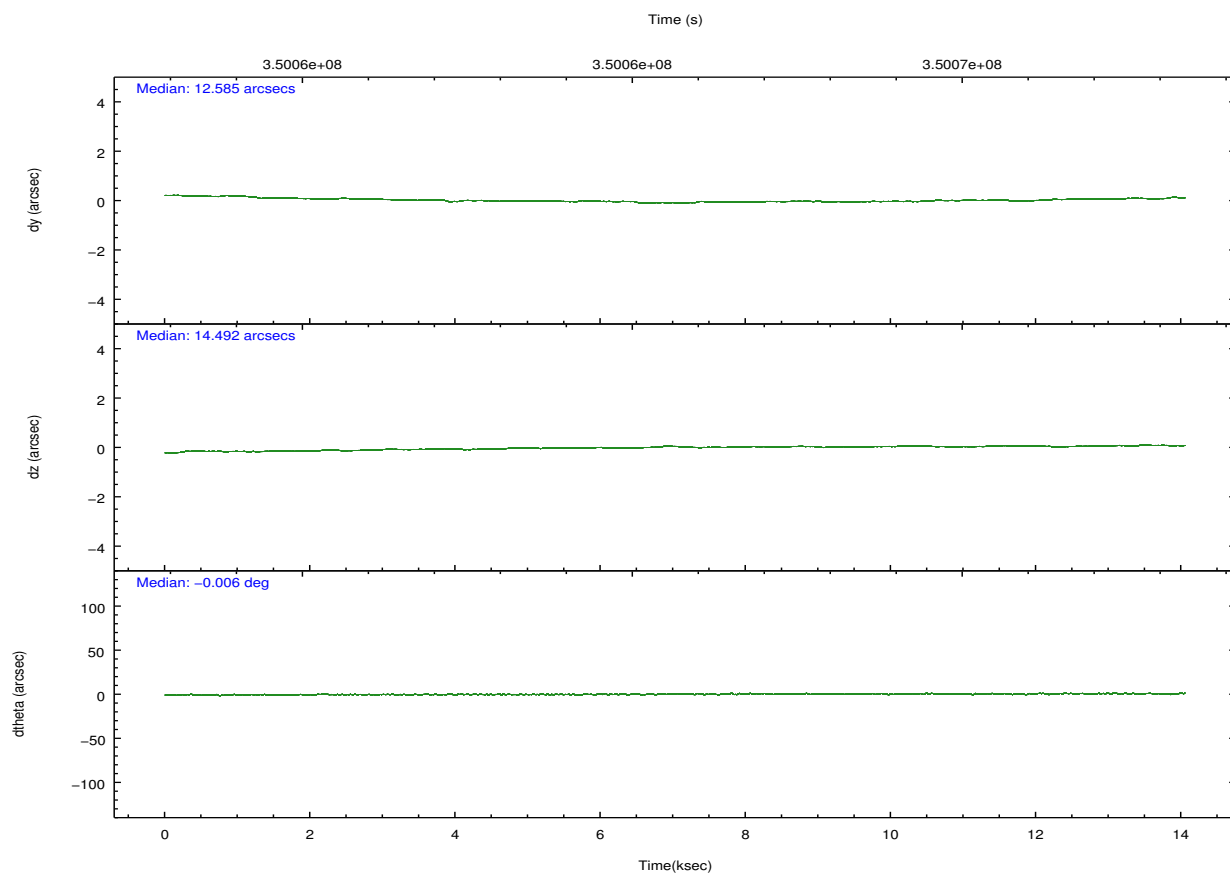
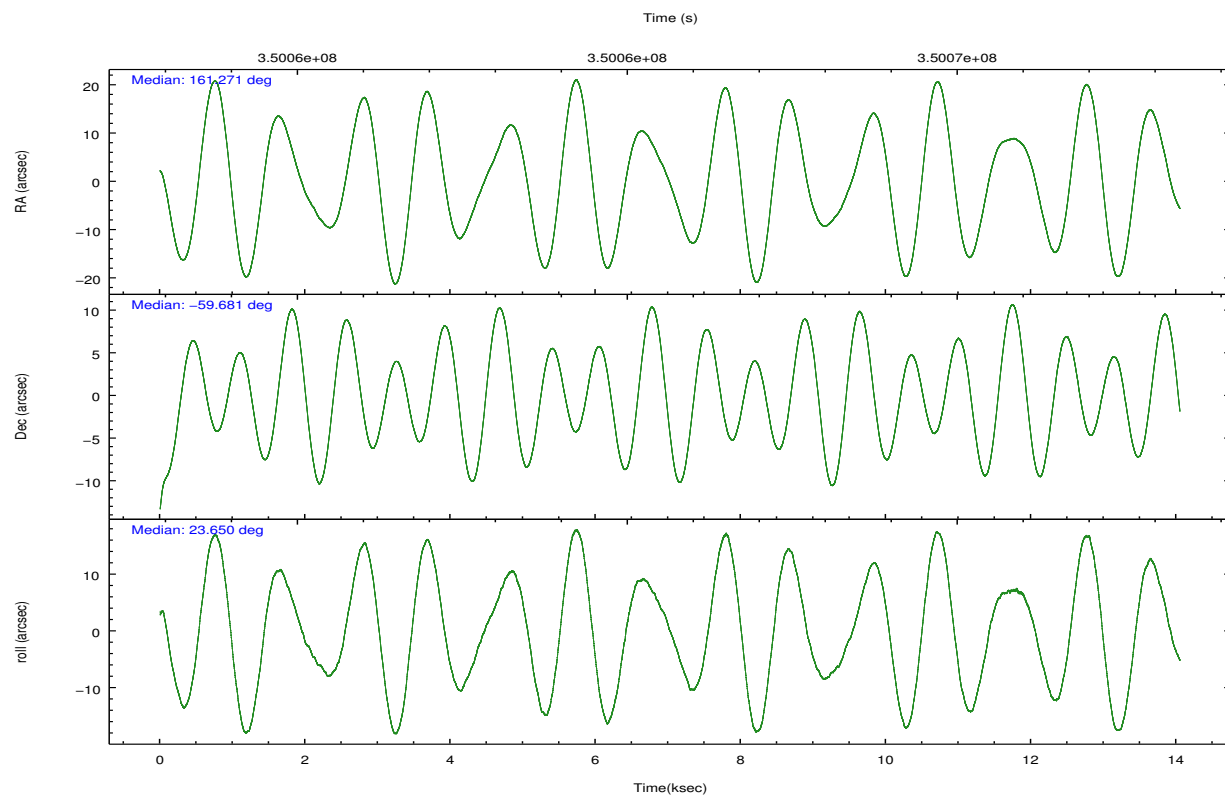
	ccd 7
grade 0 events	5152
	13%
grade 1 events	42
	0%
grade 2 events	5591
	14%
grade 3 events	3016
	7%
grade 4 events	3027
	7%
grade 5 events	2499
	6%
grade 6 events	7999
	20%
grade 7 events	11447
	29%

2.2 Compared Parameters

Parameter	Planned	Actual	Parameter	Planned	Actual
Instrument	ACIS	ACIS	Obspar format version number	7	7
Detector	ACIS-7	ACIS-7	Obspar file type	PREDICTED	ACTUAL
Grating	NONE	NONE	Obspar update status	NONE	UPDATED
Data mode	FAINT	FAINT	Number of optional ACIS chips dropped	0	0
Observation mode	POINTING	POINTING	On-chip summing requested	N	N
[deg] Pointing RA	161.239594	161.2711111821357	Subarray requested	CUSTOM	1/8
[deg] Pointing Dec	-59.703509	-59.68127133074791	Subarray start row	449	449
[deg] Pointing Roll	23.474067	23.65789800137353	Subarray row count	128	128
[s] Window start time (MET)	348019266.184000	348019266.184000	Alternating exposures requested	N	N
[s] Window stop time (MET)	350092866.184000	350092866.184000	[s] Primary exposure time	0.000000	0.4
[mm] SIM focus pos	-0.684267	-0.6828225247311905			
[mm] SIM defocus	0	0.001444936568705701			
[mm] SIM translation stage pos	-189.840023	-189.8383482136847			
[mm] SIM translation stage offset	-0.2925	-0.294174369323116			
[s] Observation start time (MET)	350058883.184000	350057803.29135			
Observation start date	2009-02-03T14:33:37	2009-02-03T14:16:43			
[s] Observation end time (MET)	350072683.184000	350073509.87963			
Observation end date	2009-02-03T18:23:37	2009-02-03T18:38:29			
Read mode	TIMED	TIMED			

2.3 Aspect



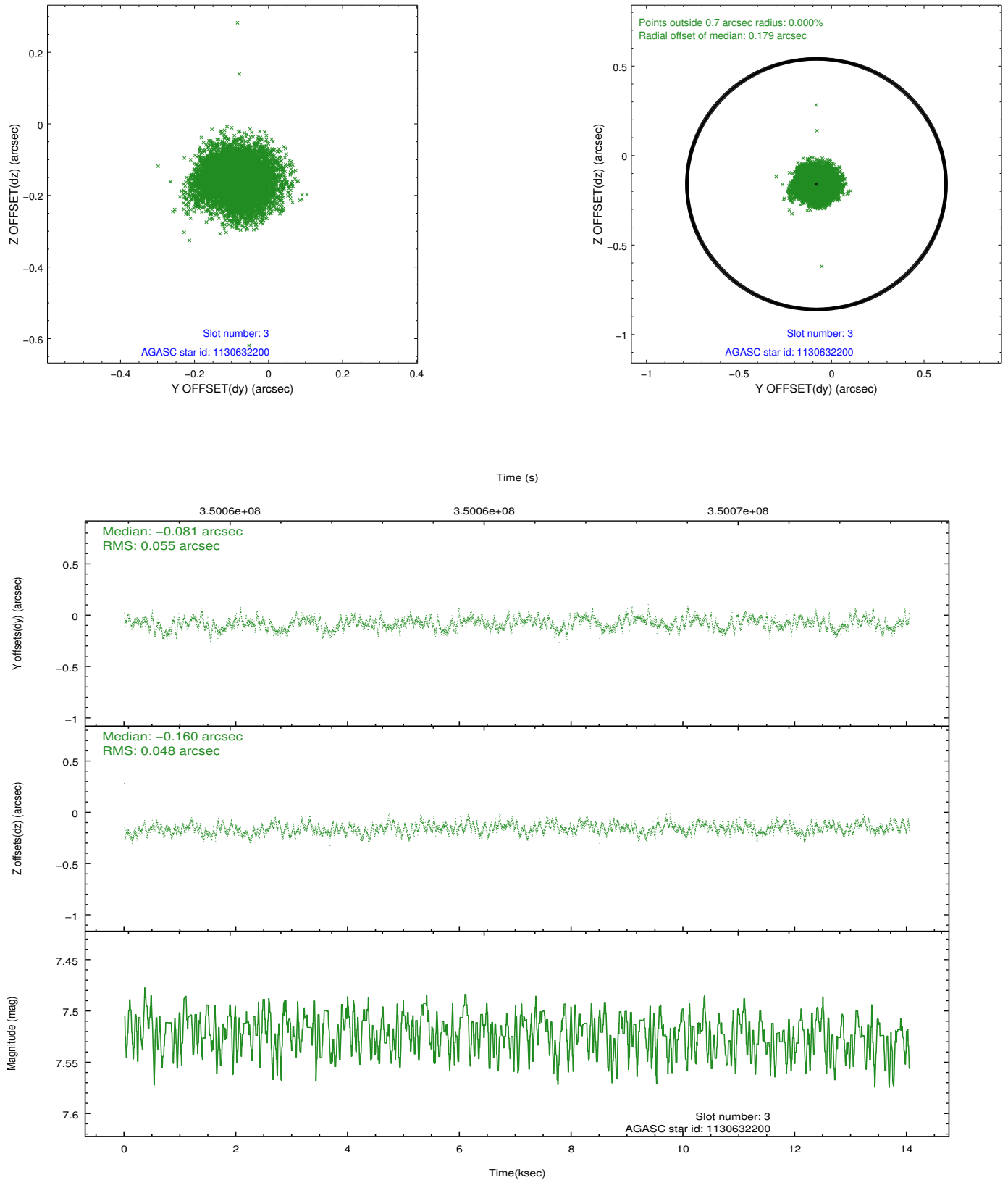


Slot Statistics

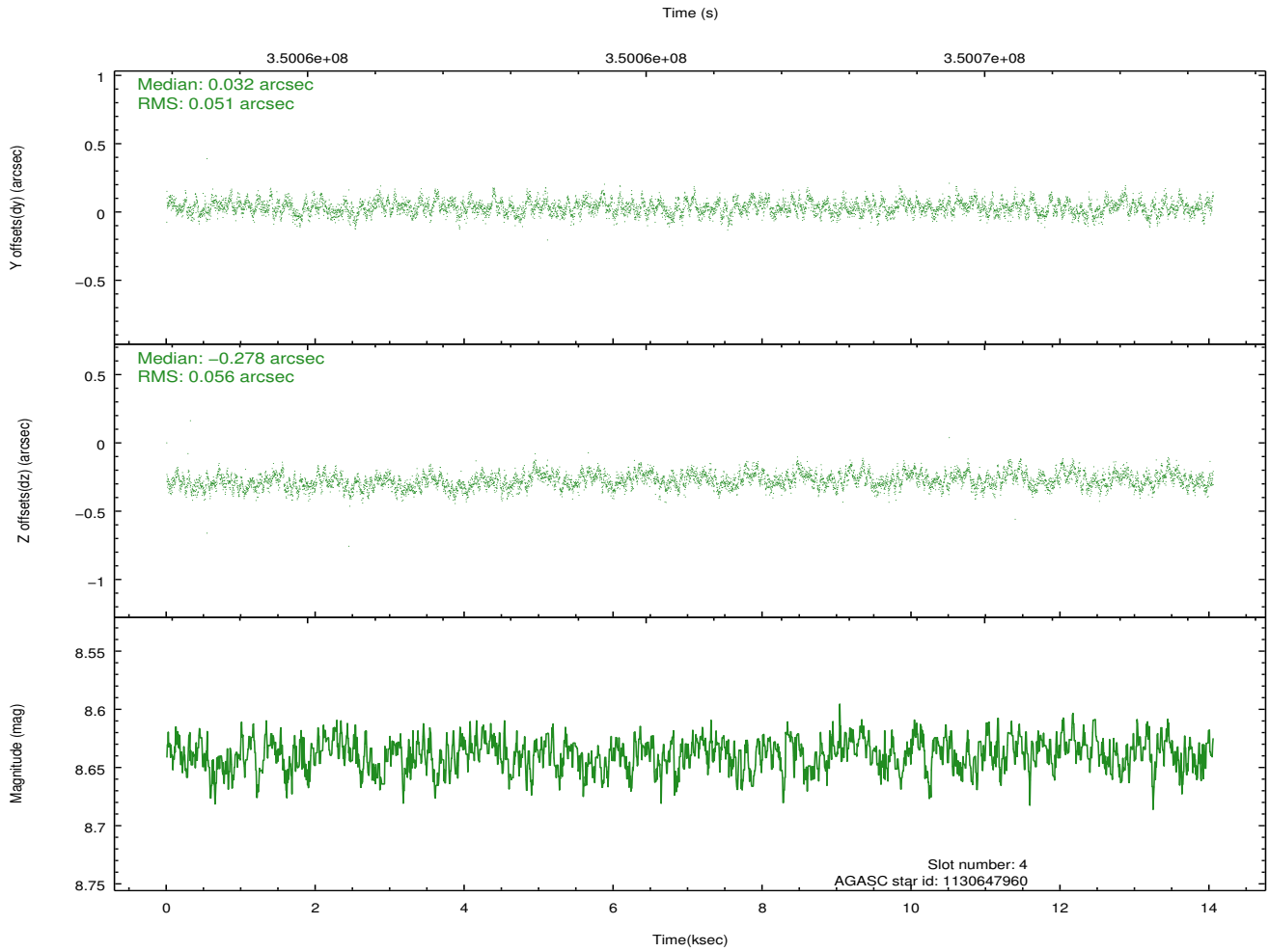
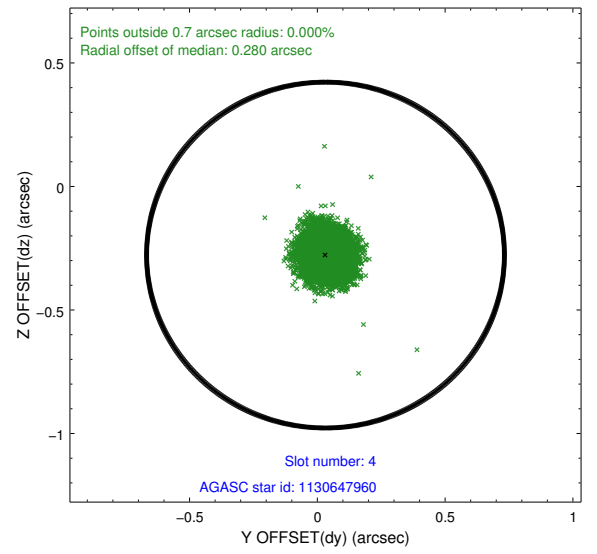
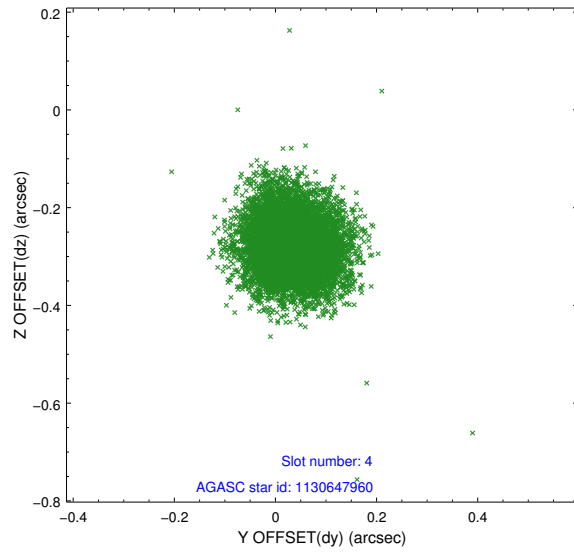
slot	status	id	mag	n_pts	med_dy	med_dz	dr1	dr2	ra	dec	mean_y	mean_z
0	FID	ACIS-S-1	6.96	3427	0.057	-0.086	0.016	0.029	0.000000	0.000000	930.61	-1737.76
1	FID	ACIS-S-4	6.97	3427	0.116	0.035	0.010	0.017	0.000000	0.000000	2148.25	166.18
2	FID	ACIS-S-5	7.00	3428	-0.201	0.062	0.013	0.025	0.000000	0.000000	-1818.10	160.15
3	GUIDE	1130632200	7.52	6852	-0.081	-0.160	0.078	0.121	161.433843	-59.407820	750.24	834.40
4	GUIDE	1130647960	8.64	6855	0.032	-0.278	0.081	0.129	160.287471	-59.247776	-959.05	2191.49
5	GUIDE	1174020200	8.32	6852	0.120	0.127	0.060	0.097	160.489138	-60.487295	-2347.32	-2064.57
6	GUIDE	1174012960	7.15	6855	-0.038	0.120	0.051	0.081	160.855674	-60.332270	-1529.91	-1805.65
7	GUIDE	1174033752	8.47	6847	-0.032	0.188	0.074	0.117	162.418977	-60.164599	1269.05	-2380.79

2.4 Star Slots

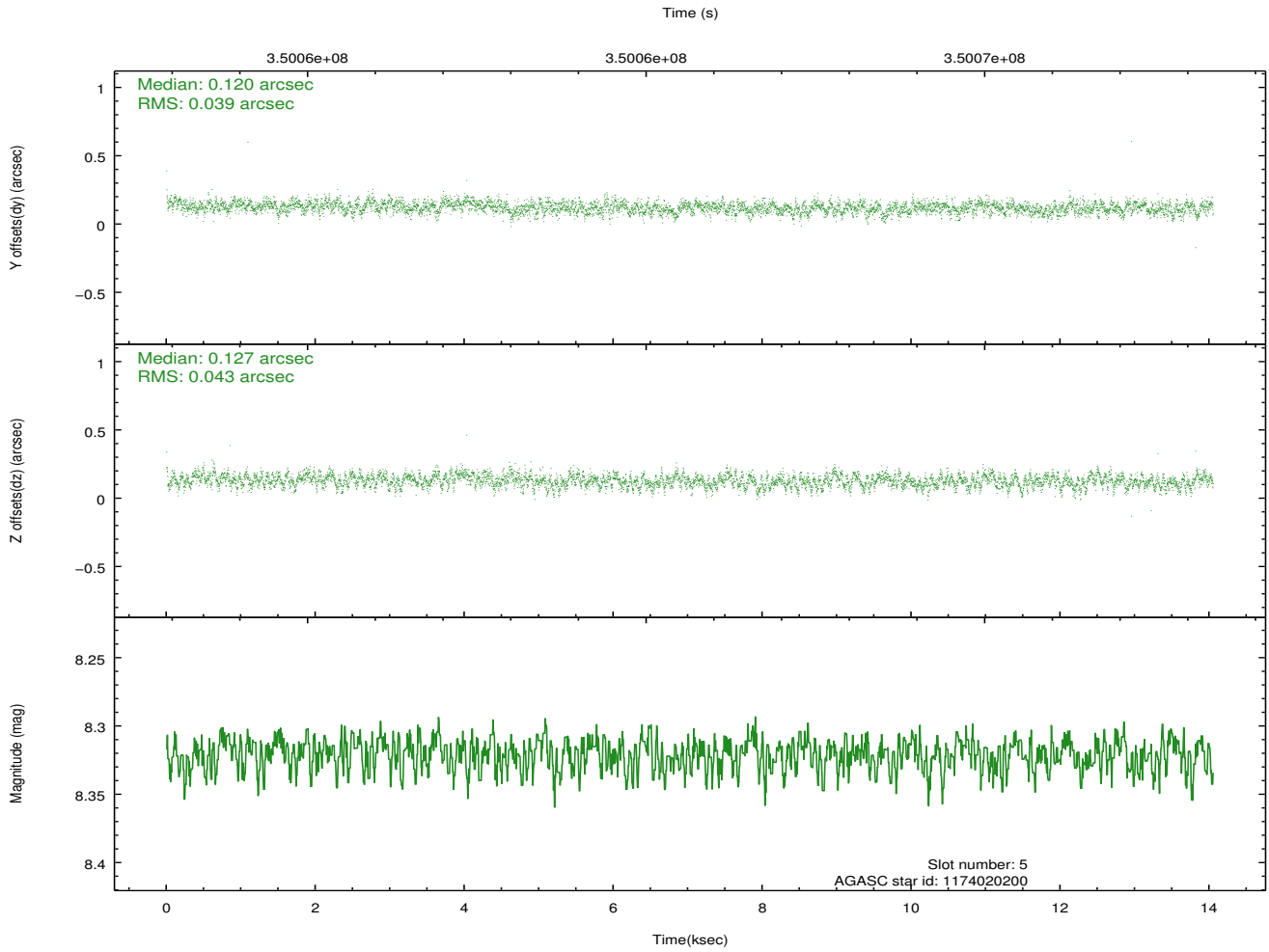
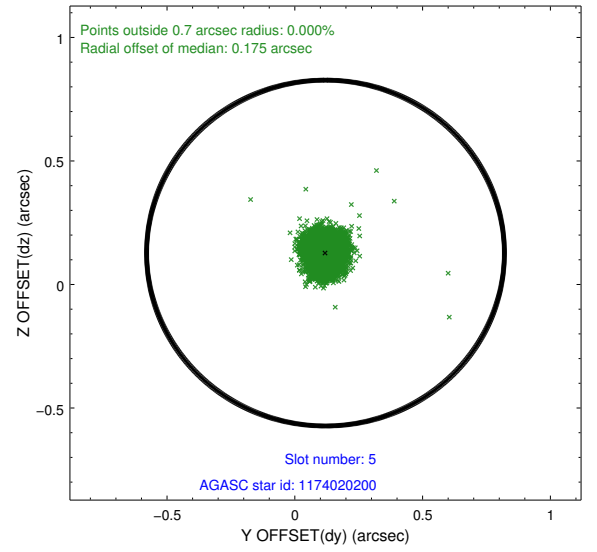
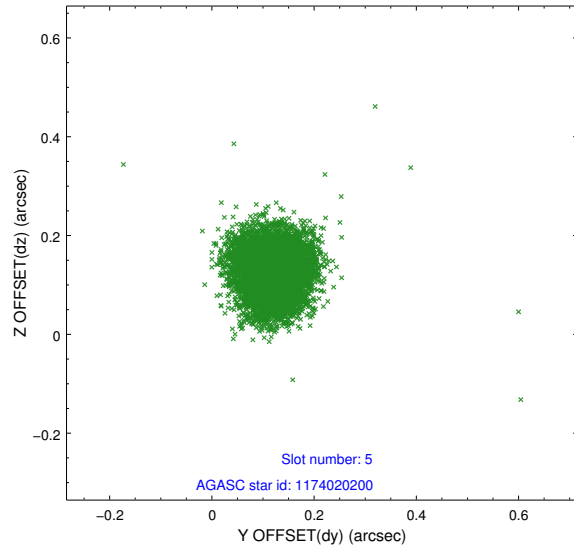
2.4.1 Slot 3



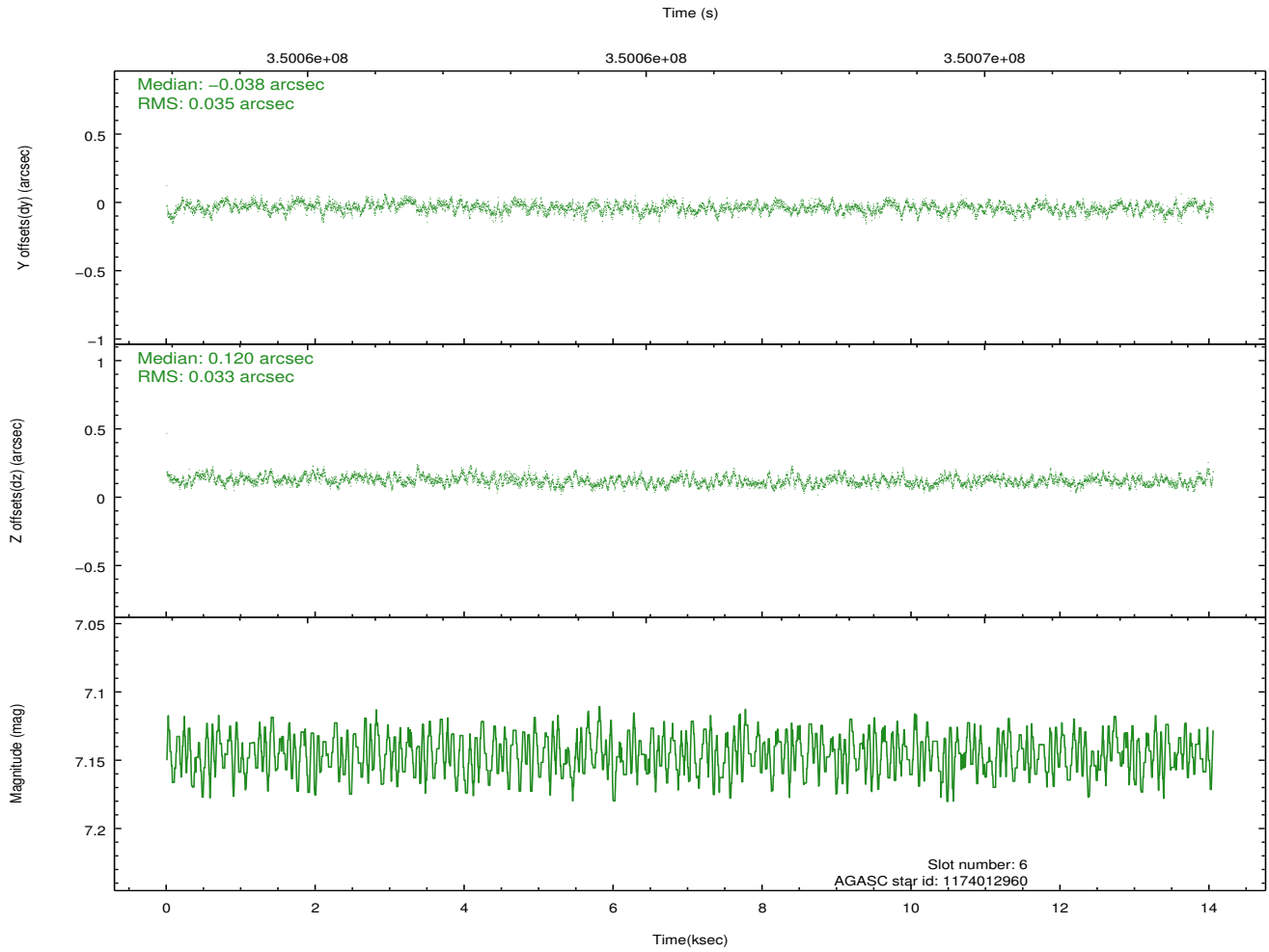
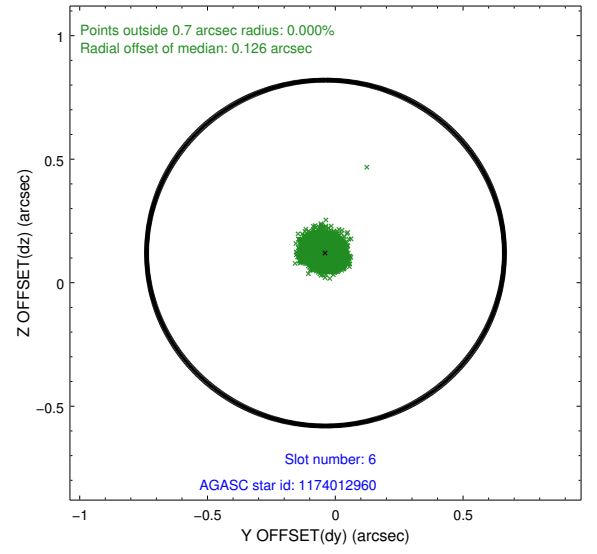
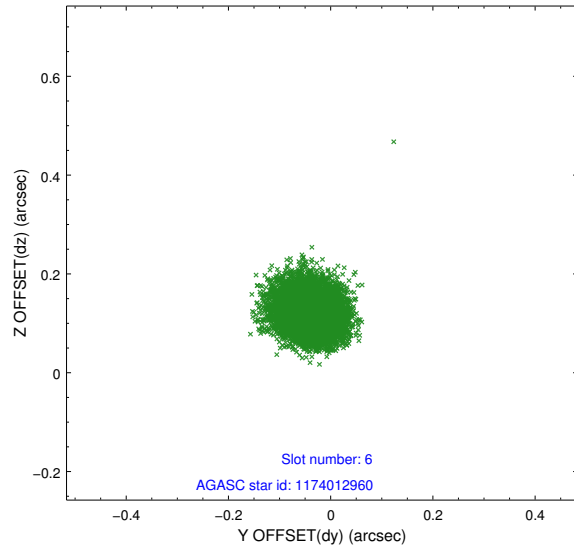
2.4.2 Slot 4



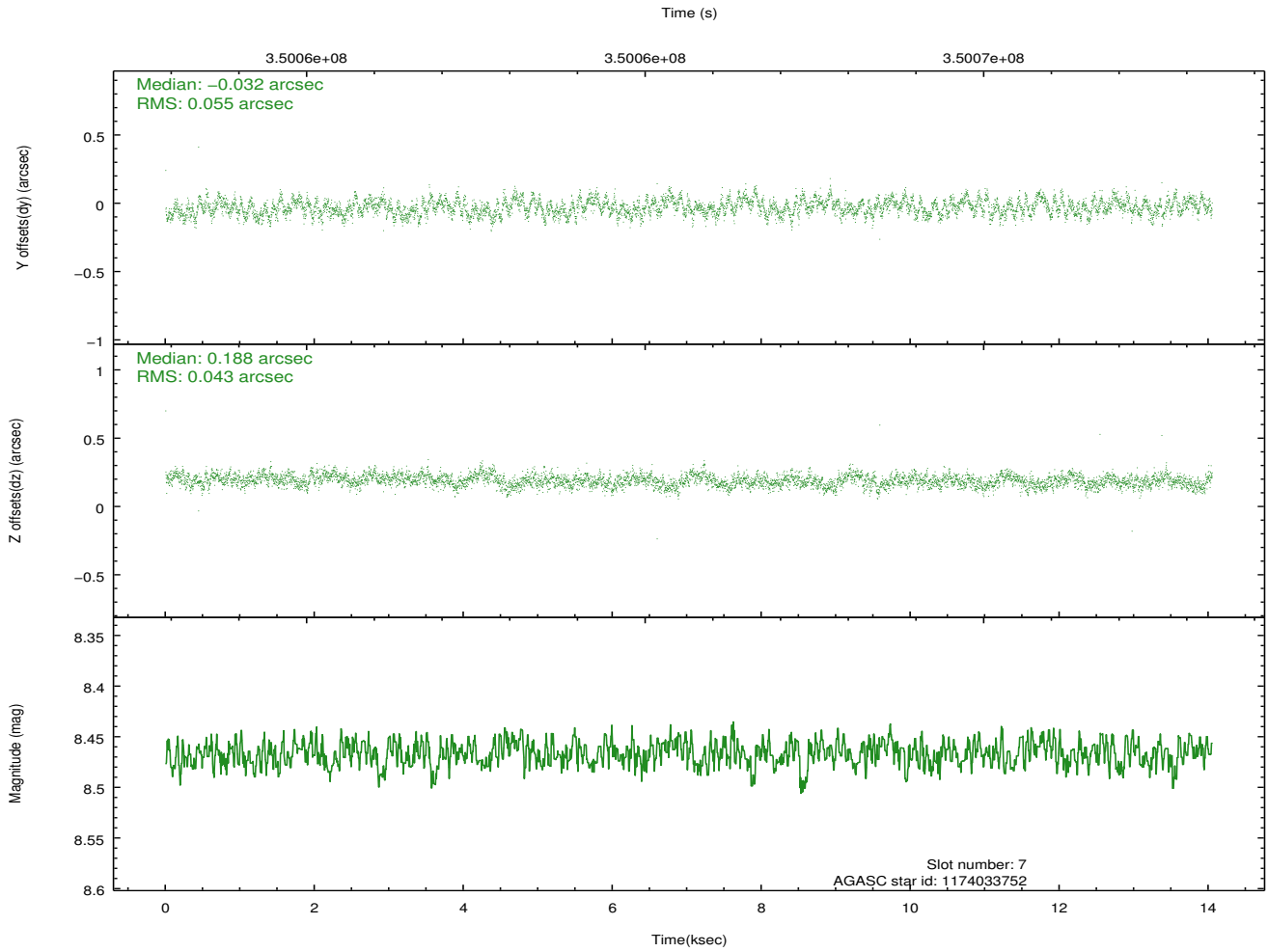
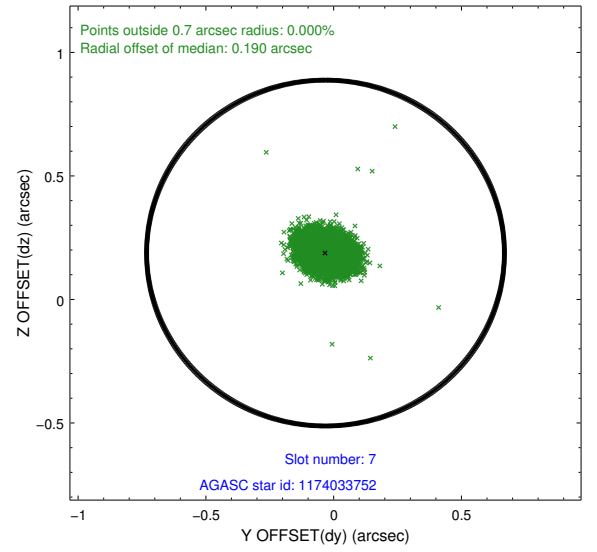
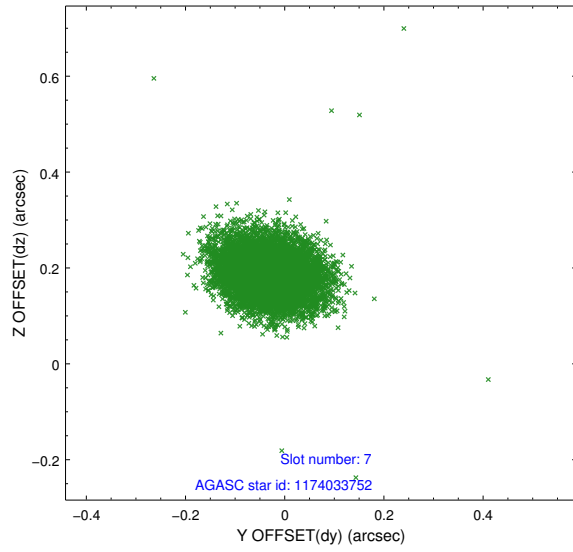
2.4.3 Slot 5



2.4.4 Slot 6

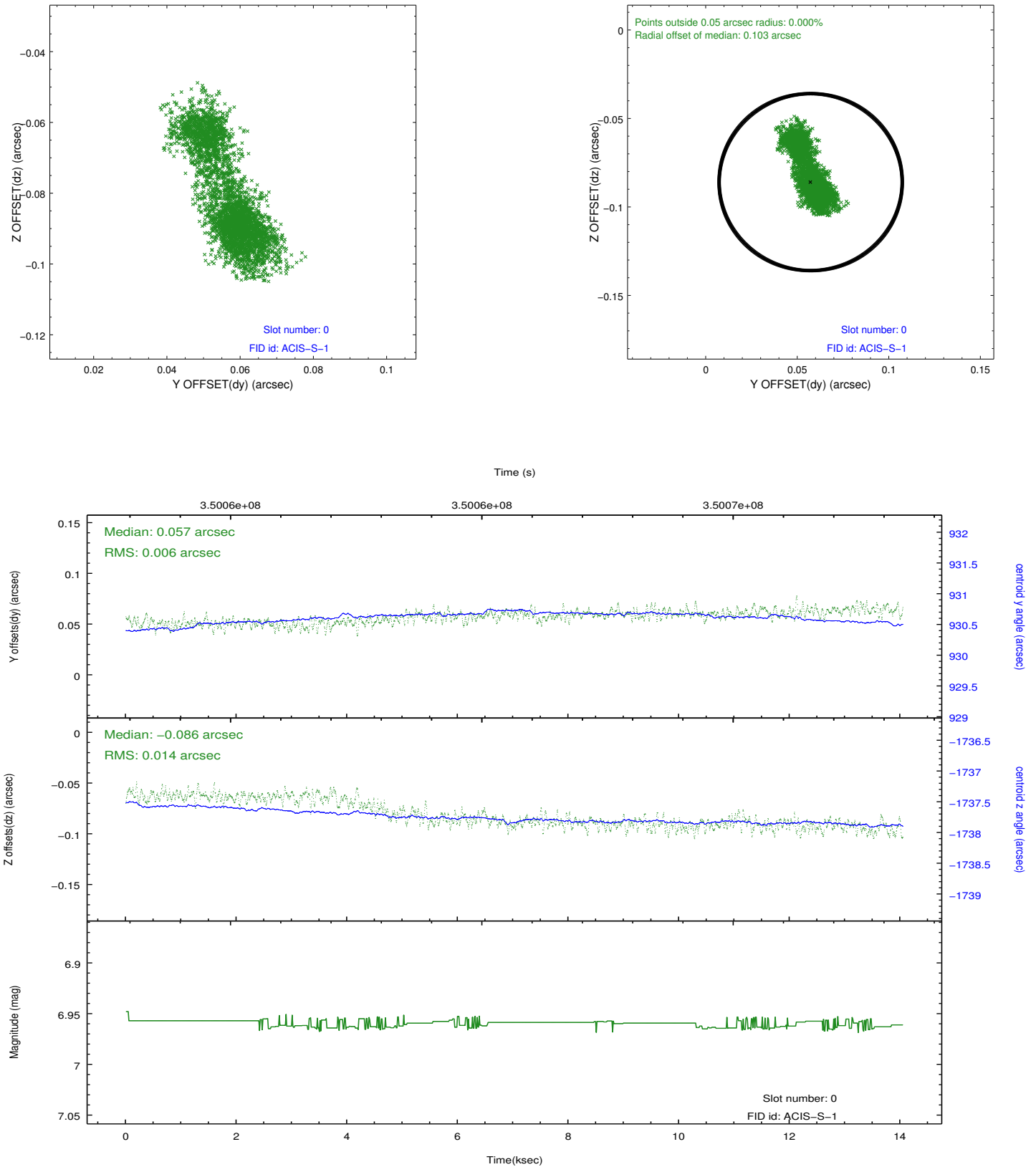


2.4.5 Slot 7

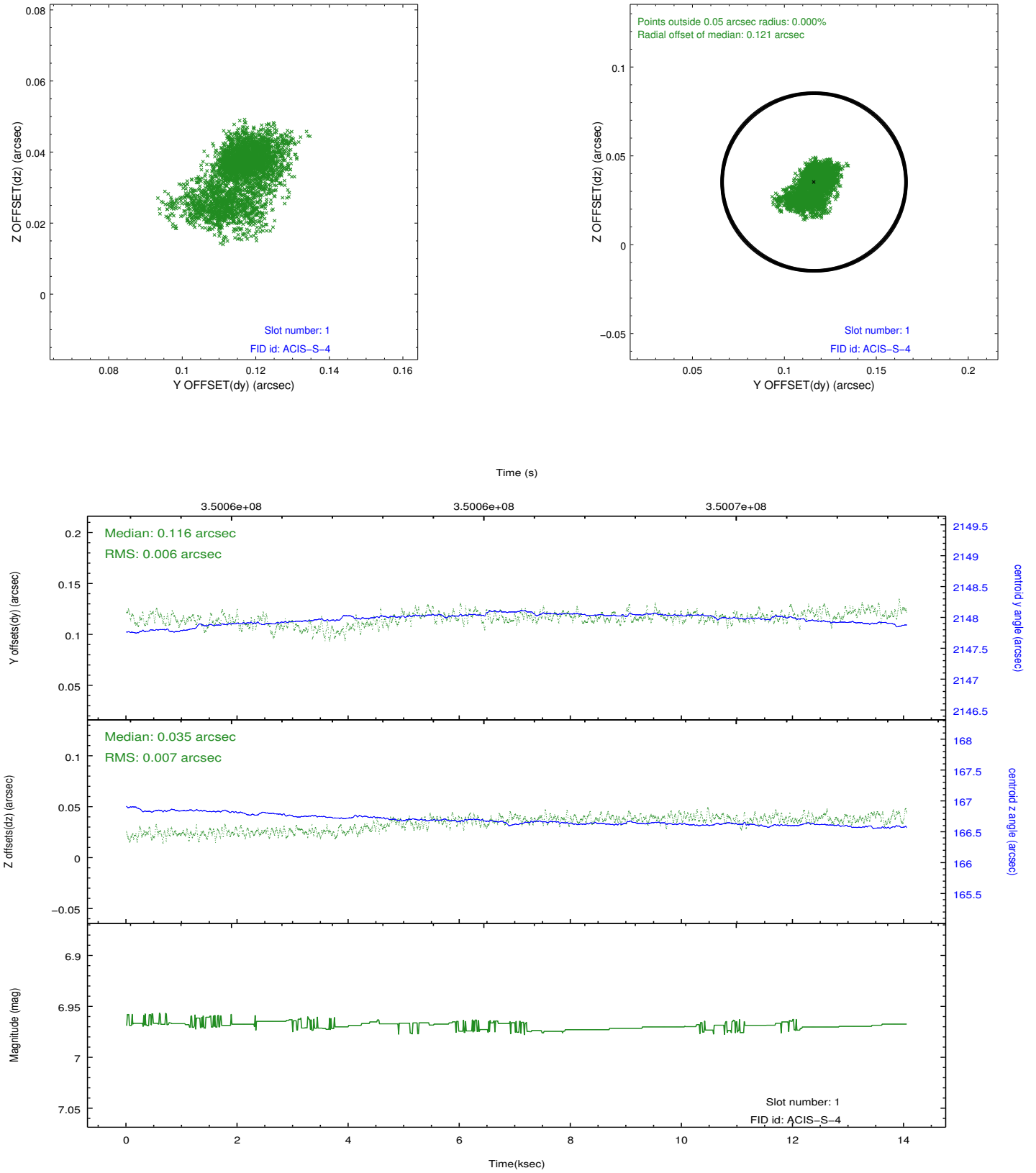


2.5 FID Slots

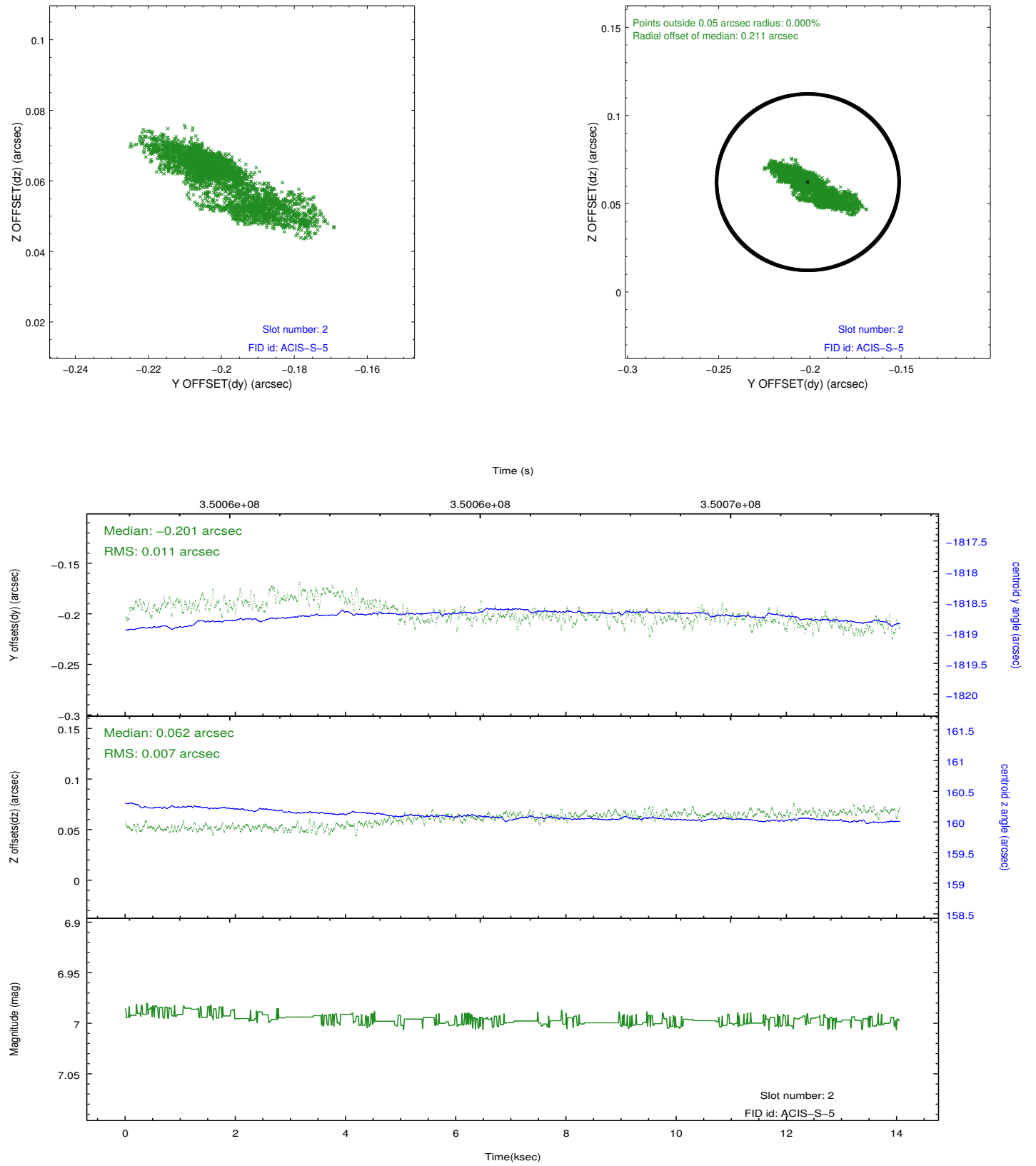
2.5.1 Slot 0



2.5.2 Slot 1



2.5.3 Slot 2



A Summary

A.1 Status

V&V Scientist	Joy Nichols
V&V Date (YYYY-MM-DD)	2012.06.06
V&V Edition	1
V&V Disposition and Status	OK
V&V Charge Time	13.8091991

A.2 Comments

Joint Proposal: XMM Window constraint met.