

# V&V Reference Report

## L2 ASCDS Version : 7.6.10

Observation 947 - L2 Version 001  
Chandra X-Ray Center

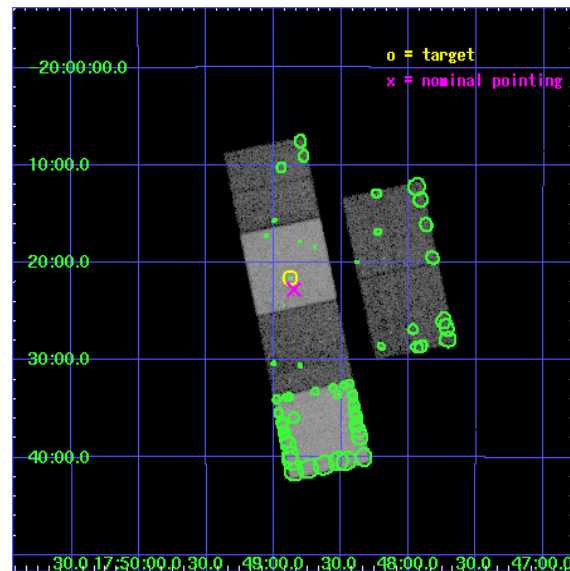
L2 Processing Date : May 30 2007

## Contents

<b>1</b>	<b>Front</b>	<b>2</b>
<b>2</b>	<b>OBI</b>	<b>3</b>
2.1	OBI . . . . .	3
2.1.1	Images . . . . .	3
2.1.2	Bias . . . . .	3
2.1.3	Parameters . . . . .	4
2.1.4	Events . . . . .	4
2.2	Compared Parameters . . . . .	5
2.3	Aspect . . . . .	6
2.4	Star Slots . . . . .	9
2.4.1	Slot 3 . . . . .	9
2.4.2	Slot 4 . . . . .	10
2.4.3	Slot 5 . . . . .	11
2.4.4	Slot 6 . . . . .	12
2.4.5	Slot 7 . . . . .	13
2.5	FID Slots . . . . .	14
2.5.1	Slot 0 . . . . .	14
2.5.2	Slot 1 . . . . .	15
2.5.3	Slot 2 . . . . .	16
<b>3</b>	<b>Point Sources</b>	<b>17</b>
<b>A</b>	<b>Summary</b>	<b>18</b>
A.1	Status . . . . .	18
A.2	Comments . . . . .	18

# 1 Front

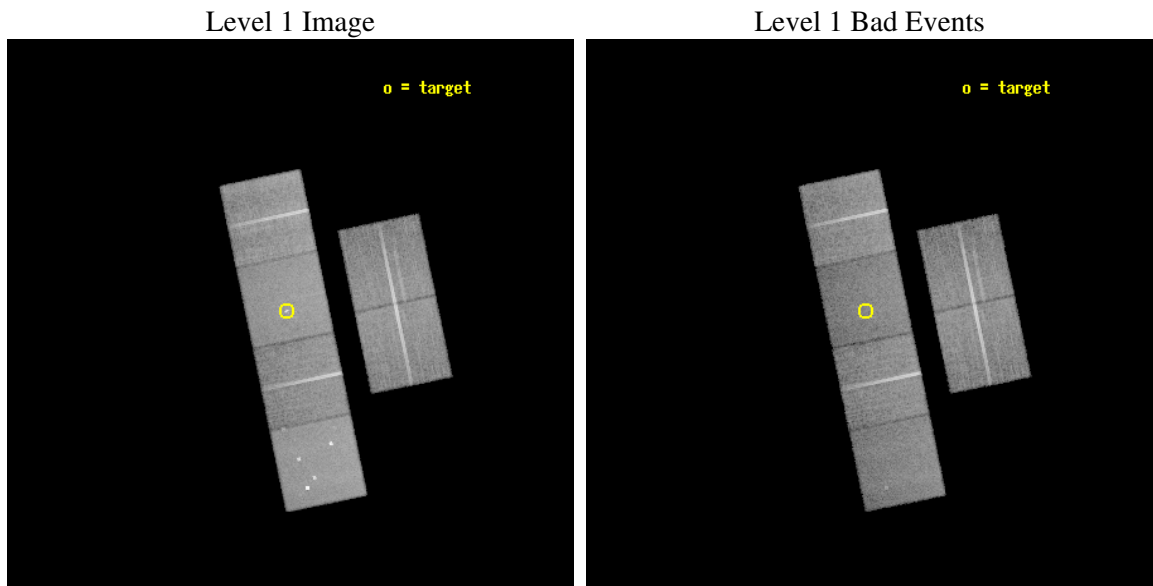
seq_num	300026
obs_id	947
title	A STUDY OF THE POPULATIONS OF FAINT X-RAY SOURCES IN GLOBULAR CLUSTERS
observer	Prof. Walter Lewin
object	NGC 6440
dtcycle	0
cycle	P
ra_targ	267.219167
dec_targ	-20.359389
ra_nom	267.21268848779
dec_nom	-20.379536667046
roll_nom	258.23263204966
revision	3
ontime	23577.600021958
livetime	23279.046253754
ontime2	23577.600021958
ontime3	23577.600021958
ontime5	23577.600021958
ontime6	23577.600021958
ontime7	23577.600021958
ontime8	23577.600021958
l2events	230989



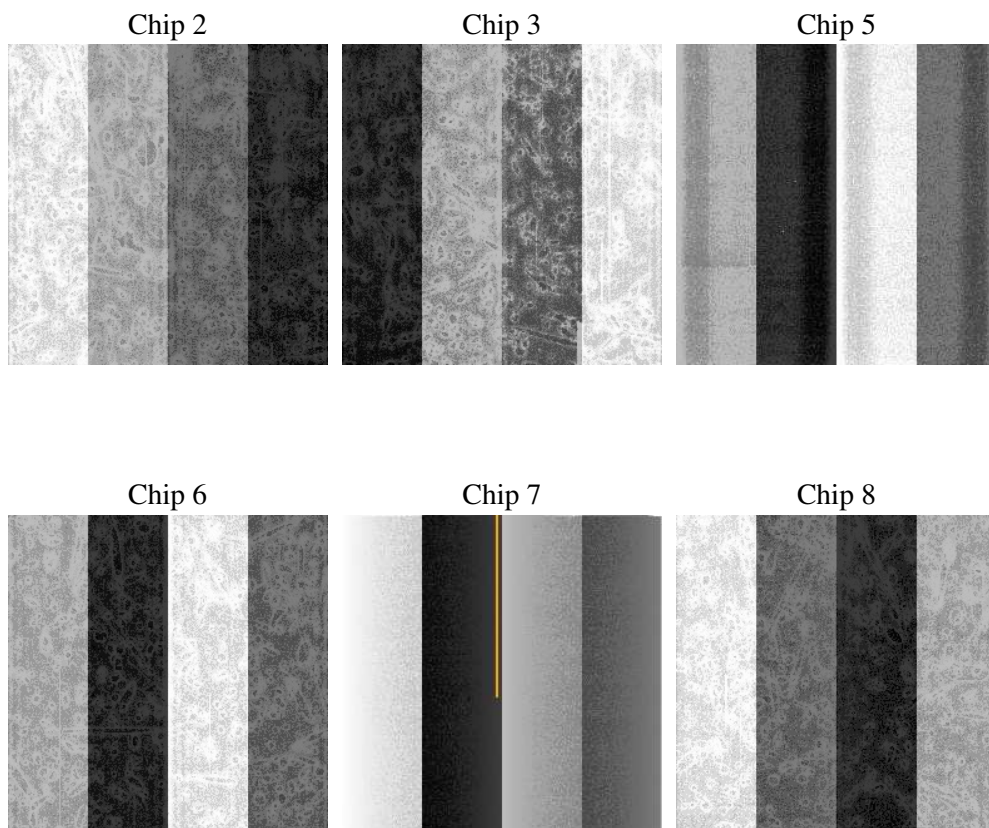
## 2 OBI

### 2.1 OBI

#### 2.1.1 Images



#### 2.1.2 Bias



### 2.1.3 Parameters

obi_num	0
ascdsver	7.6.10
caldsver	3.4.0
date	2007-05-30T11:24:20
revision	3

sched_exp_time	23625.000000
ontime	23577.600021958
ontime2	23577.600021958
ontime3	23577.600021958
ontime5	23577.600021958
ontime6	23577.600021958
ontime7	23577.600021958
ontime8	23577.600021958
l1events	1076199

### 2.1.4 Events

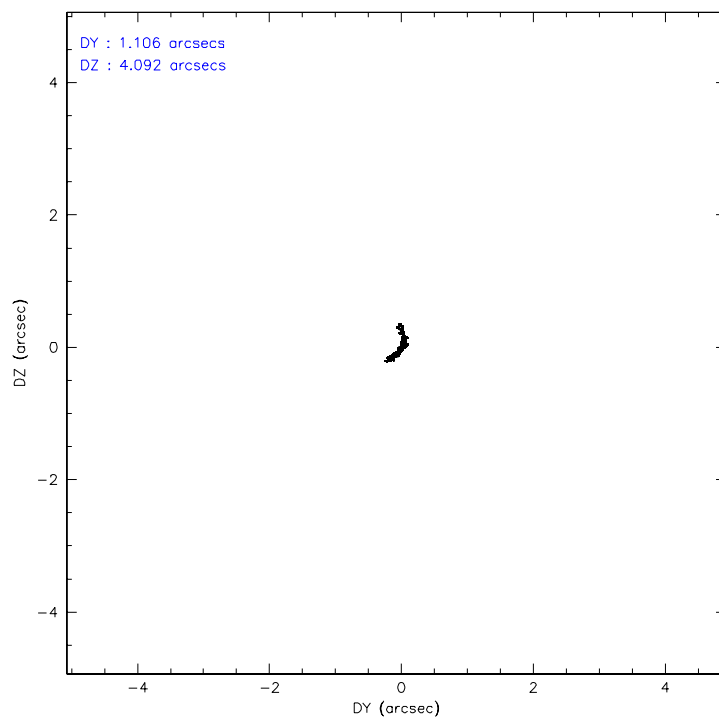
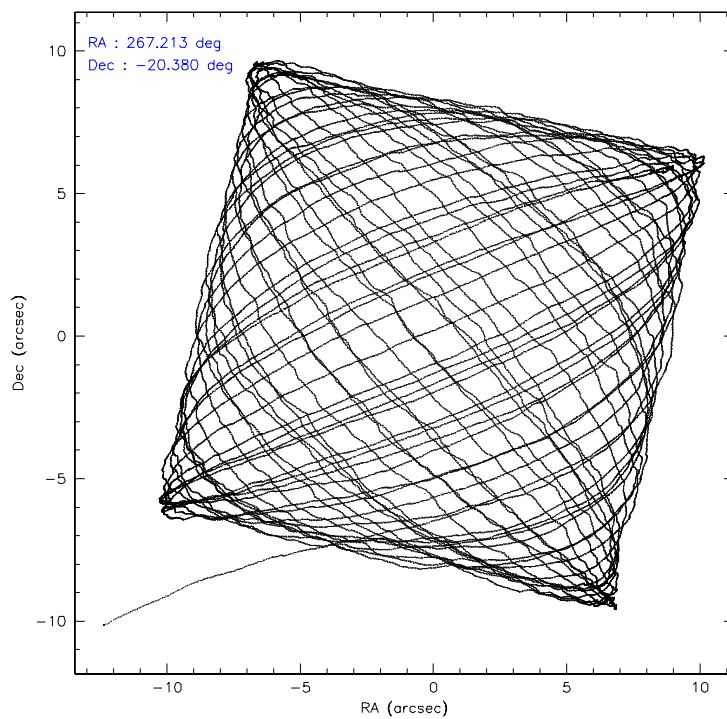
	ccd 2	ccd 3	ccd 5	ccd 6	ccd 7	ccd 8
level 1 events	167056	154336	210204	161134	188026	195443
rejected events	149774	136881	109379	142888	107013	158330
rejected %	89%	88%	52%	88%	56%	81%

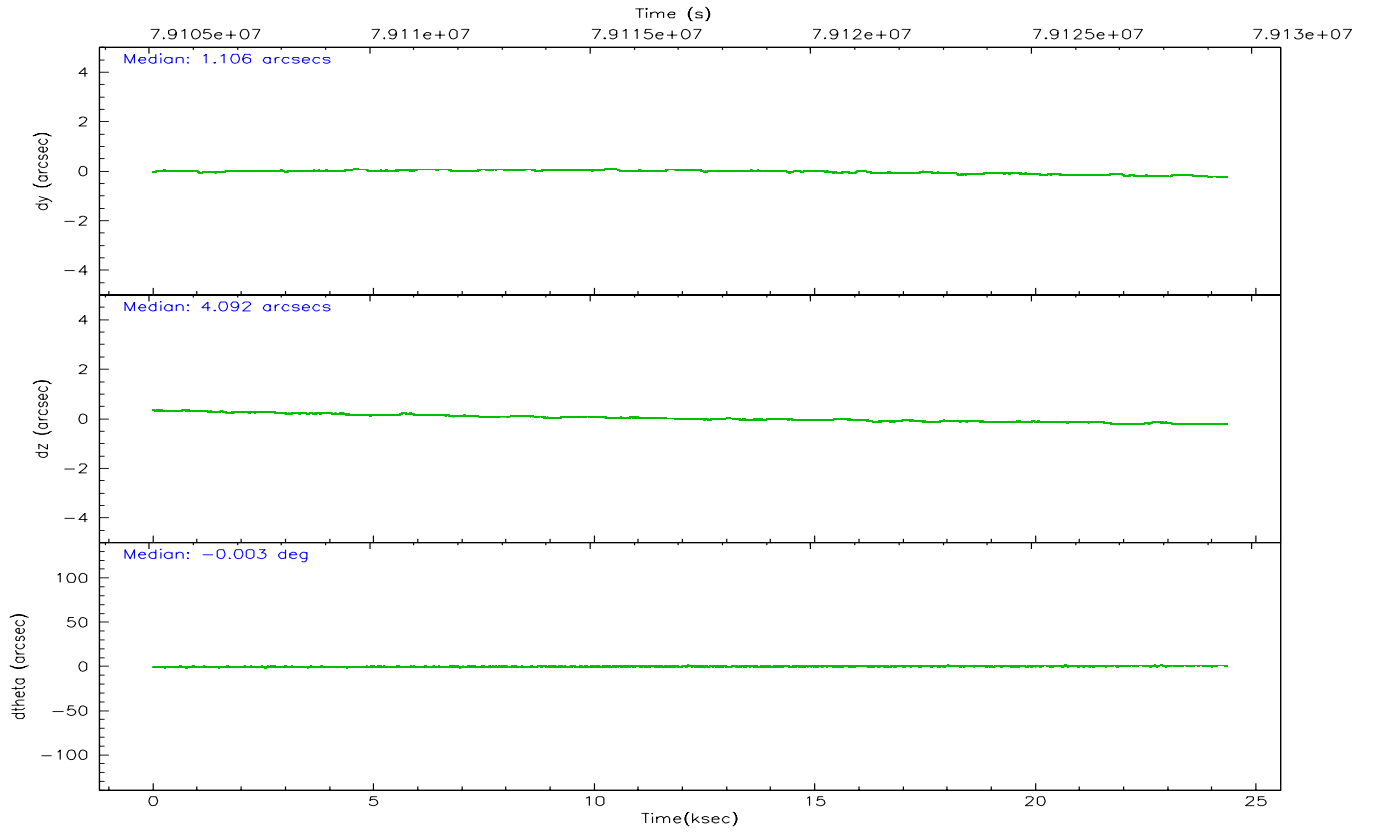
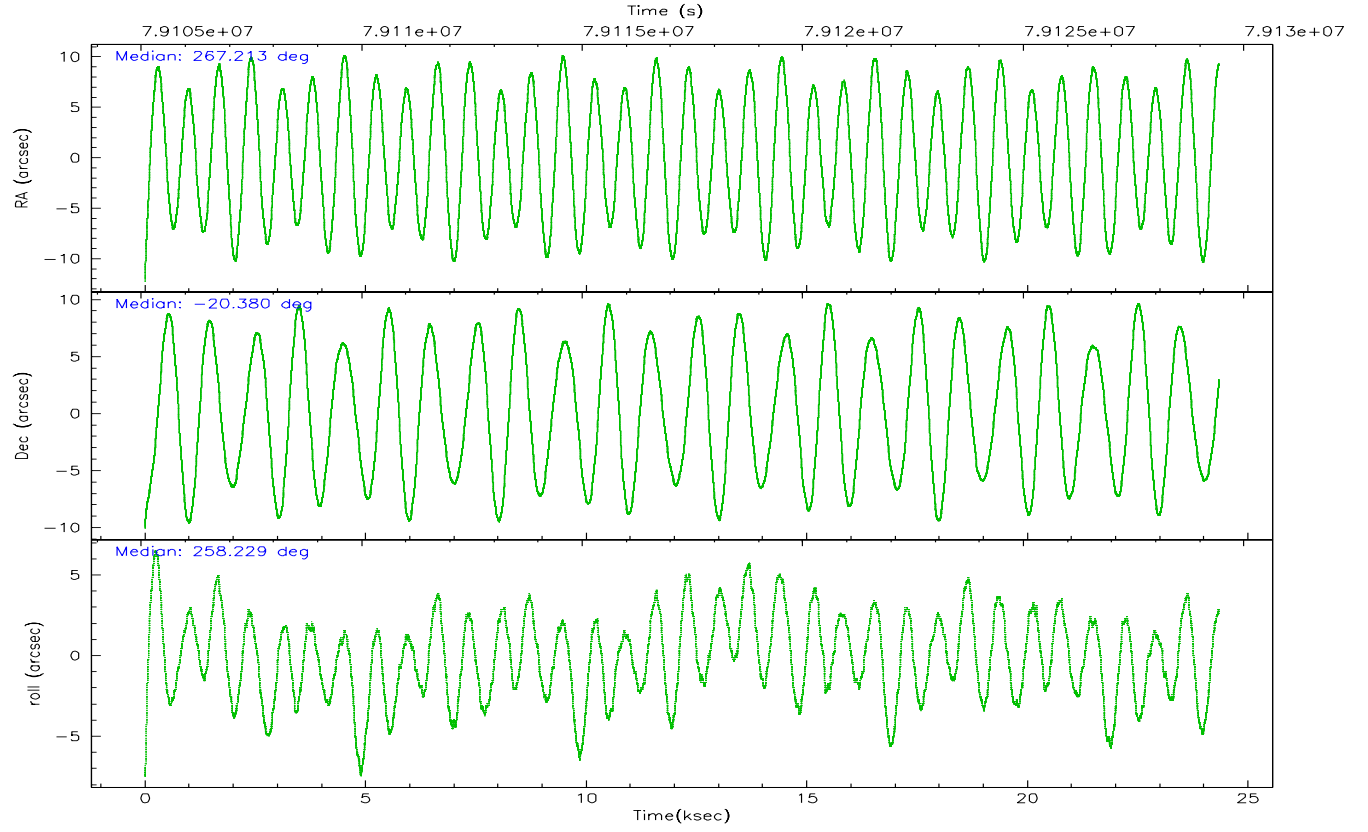
	ccd 2	ccd 3	ccd 5	ccd 6	ccd 7	ccd 8
grade 0 events	7606	8069	16362	8096	8242	12373
	4%	5%	7%	5%	4%	6%
grade 1 events	67	87	499	70	184	100
	0%	0%	0%	0%	0%	0%
grade 2 events	3546	3212	27866	3477	16051	7863
	2%	2%	13%	2%	8%	4%
grade 3 events	1647	1666	4191	1744	7578	3935
	0%	1%	1%	1%	4%	2%
grade 4 events	1643	1604	4017	1680	7540	3667
	0%	1%	1%	1%	4%	1%
grade 5 events	4839	5293	15211	5887	17704	7510
	2%	3%	7%	3%	9%	3%
grade 6 events	2845	2909	48404	3254	41618	9278
	1%	1%	23%	2%	22%	4%
grade 7 events	144863	131496	93654	136926	89109	150717
	86%	85%	44%	84%	47%	77%

## 2.2 Compared Parameters

Parameter	Planned	Actual	Parameter	Planned	Actual
Instrument	ACIS	ACIS	Obspar format version number	6	6
Detector	ACIS-235678	ACIS-235678	Obspar file type	PREDICTED	ACTUAL
Grating	NONE	NONE	Obspar update status	NONE	UPDATED
Data mode	FAINT	FAINT	Number of optional ACIS chips dropped	0	0
Observation mode	POINTING	POINTING	On-chip summing requested	N	N
Pointing RA	267.203399	267.2126884877937	Subarray requested	NONE	NONE
Pointing Dec	-20.353539	-20.37953666704604	Alternating exposures requested	N	N
Pointing Roll	258.072772	258.2326320496564	Primary exposure time	3.200000	3.2
SIM focus pos (mm)	-0.684267	-0.6828225247311905			
SIM defocus (mm)	0	0.001444936568705701			
SIM translation stage pos (mm)	-190.132523	-190.1425803651734			
SIM translation stage offset (mm)	0	0.01005778216563158			
Observation start time	79105812.184000	79104583.201098			
Observation start date	2000-07-04T13:49:08	2000-07-04T13:29:43			
Observation end time	79129437.184000	79130418.32705			
Observation end date	2000-07-04T20:22:53	2000-07-04T20:40:18			
Read mode	TIMED	TIMED			

## 2.3 Aspect





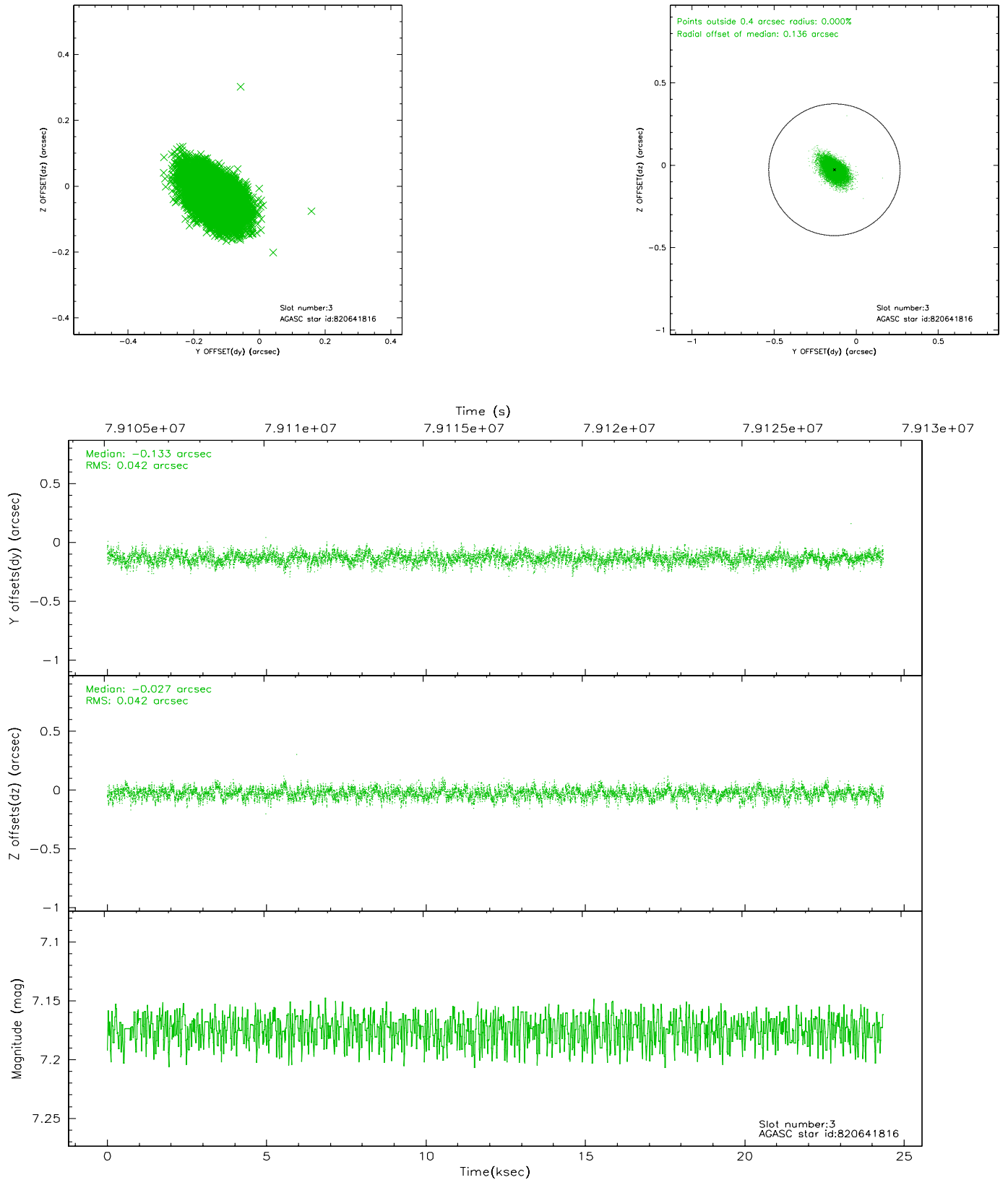
### Slot Statistics

slot	status	id	mag	n_pts	med_dy	med_dz	dr1	dr2	ra	dec	mean_y	mean_z
0	FID	ACIS-S-2	7.11	5937	-0.005	0.012	0.008	0.012	0.000000	0.000000	-753.69	-1725.13
1	FID	ACIS-S-4	7.21	5937	-0.051	-0.000	0.005	0.010	0.000000	0.000000	2159.51	183.17
2	FID	ACIS-S-5	7.24	5939	0.025	-0.002	0.007	0.012	0.000000	0.000000	-1806.32	177.04
3	GUIDE	820641816	7.17	11878	-0.133	-0.027	0.061	0.105	267.363435	-20.830907	1569.69	882.62
4	GUIDE	820121744	6.72	11878	-0.062	0.117	0.063	0.103	267.173633	-19.779615	-2001.10	-525.15
5	GUIDE	820119072	9.08	11875	0.030	-0.079	0.074	0.128	267.464837	-19.906178	-1758.65	533.40
6	GUIDE	820642232	9.99	11867	0.105	0.018	0.119	0.195	266.751270	-20.704142	1551.17	-1227.80
7	GUIDE	820119848	10.08	11862	0.059	-0.026	0.130	0.217	267.750995	-20.266800	-685.16	1745.77

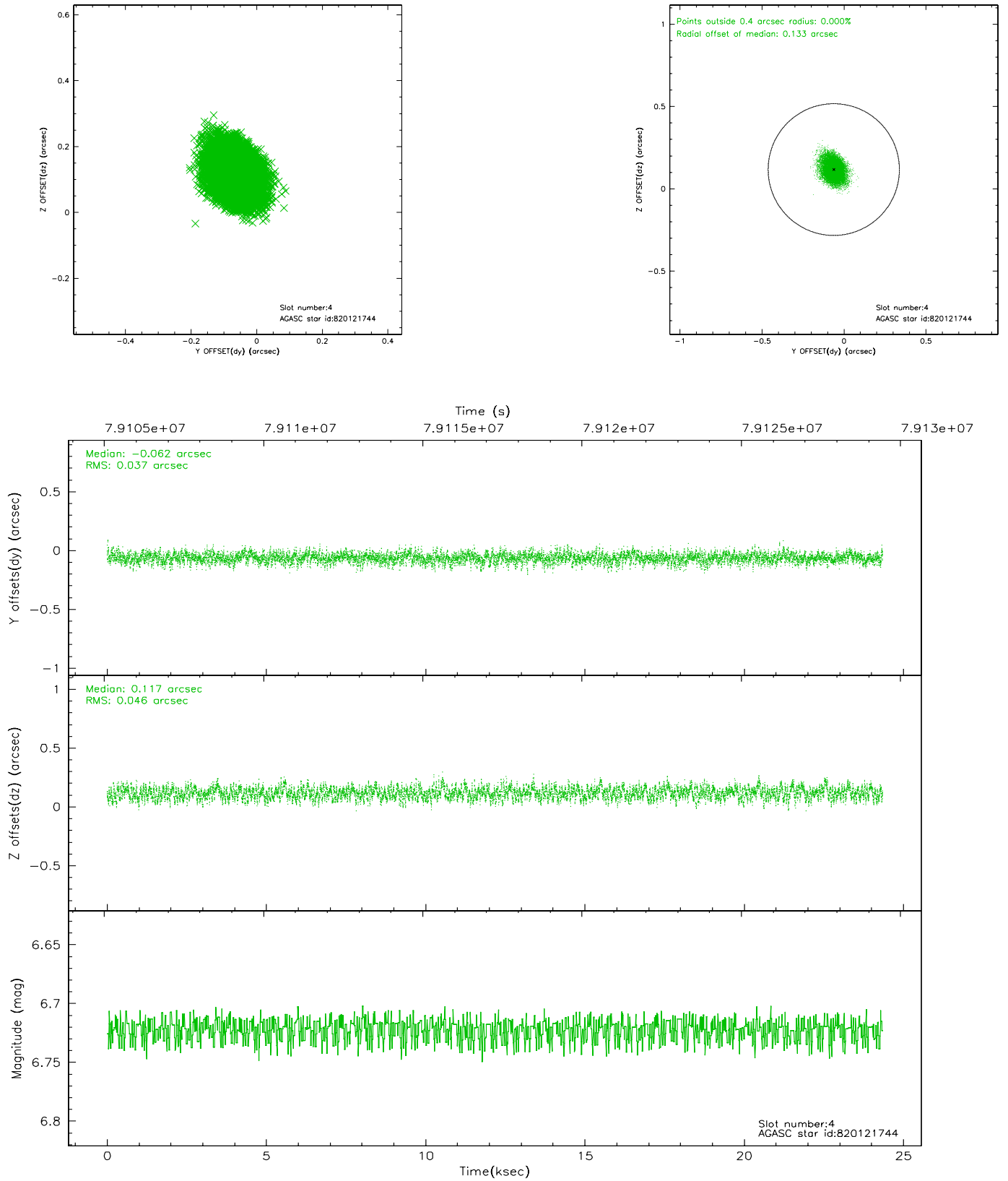


## 2.4 Star Slots

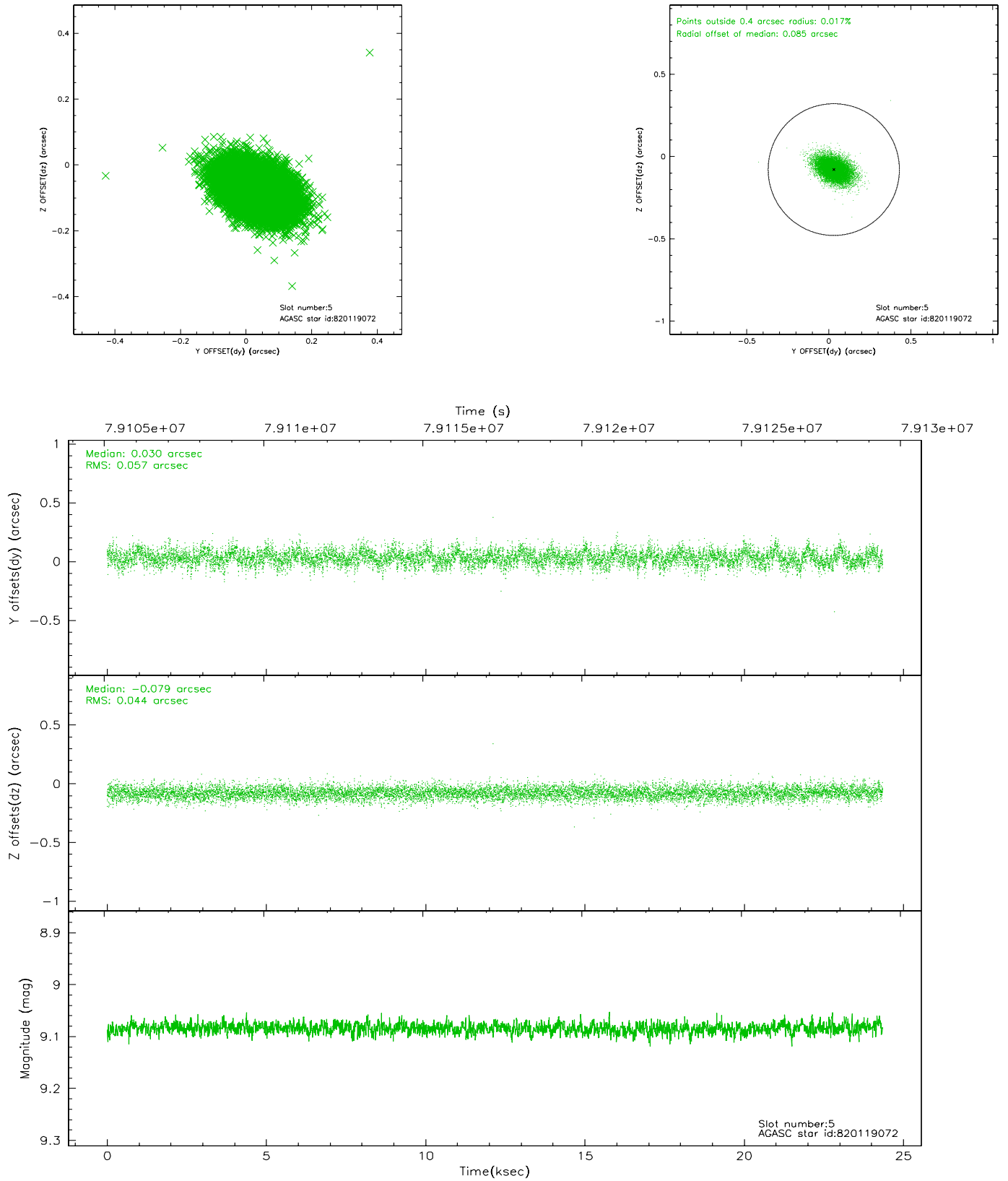
### 2.4.1 Slot 3



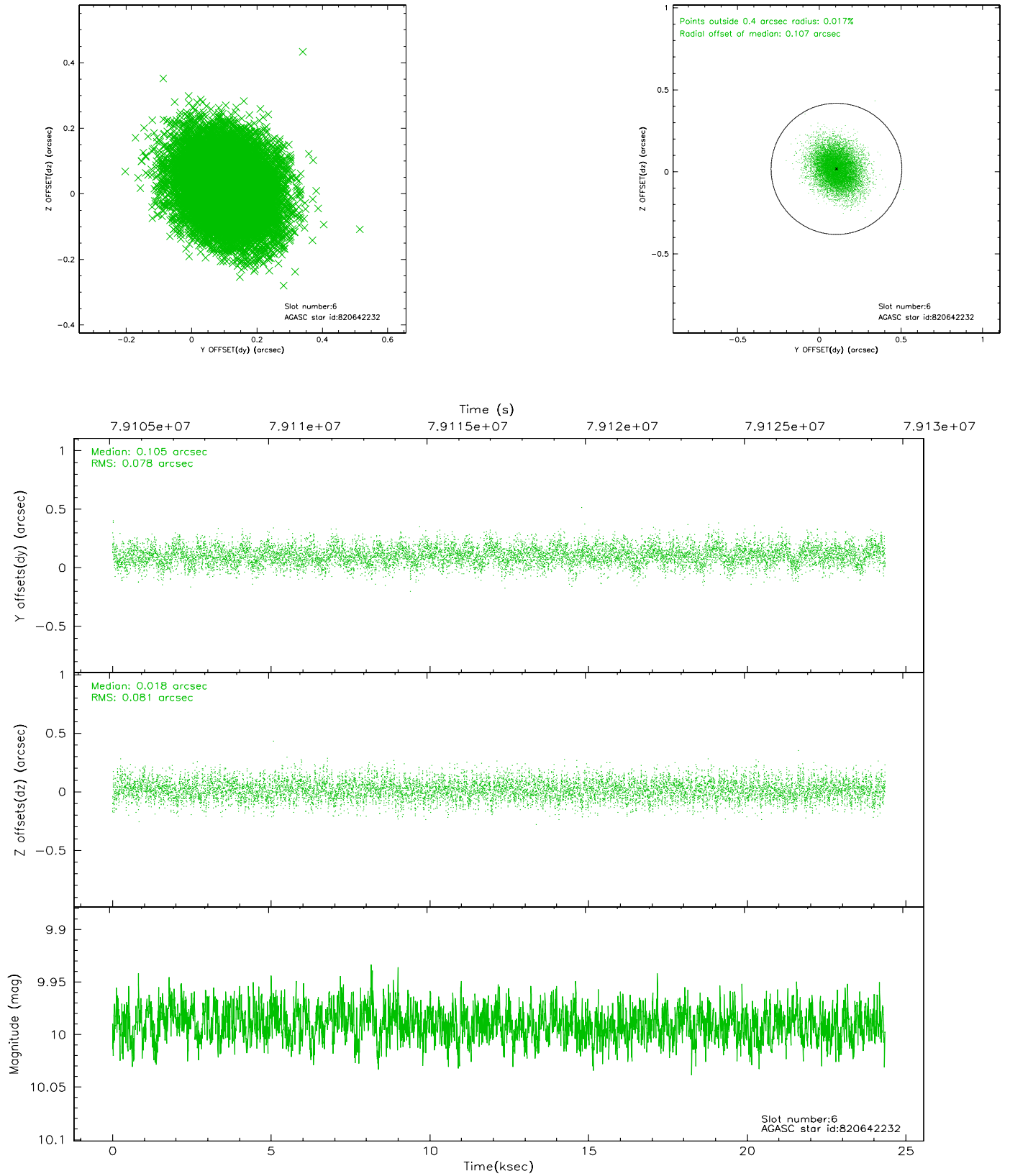
## 2.4.2 Slot 4



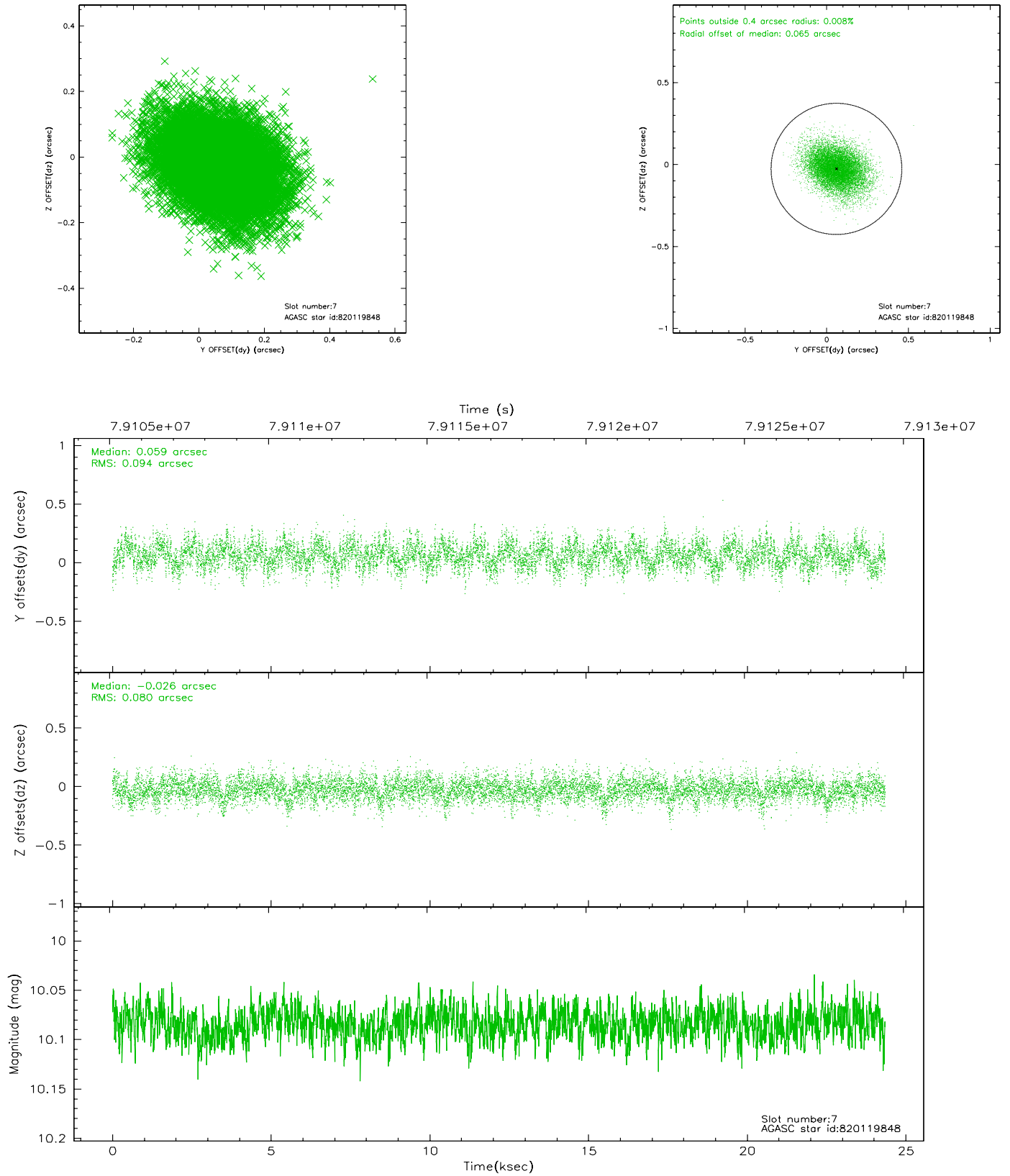
### 2.4.3 Slot 5



## 2.4.4 Slot 6

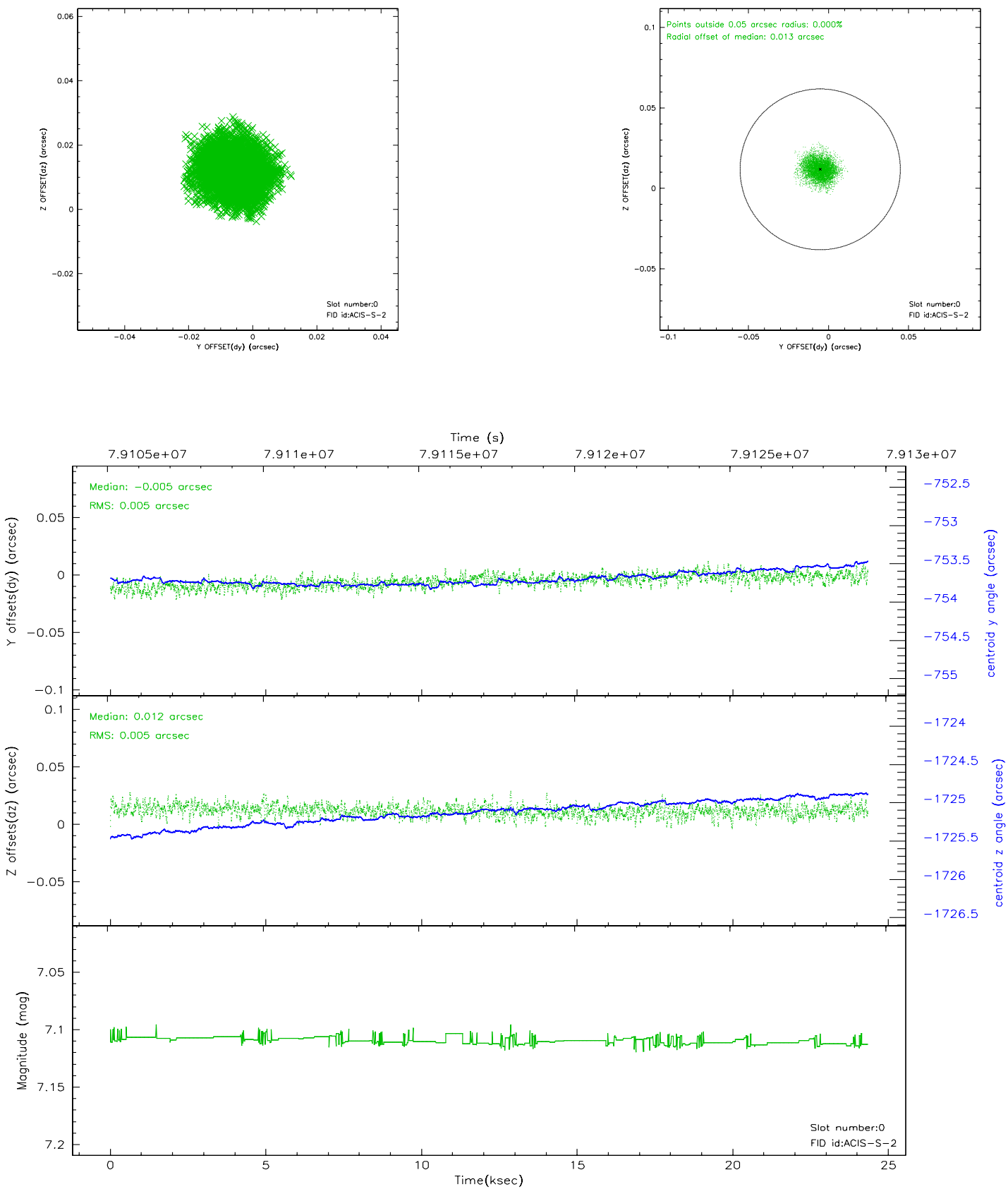


## 2.4.5 Slot 7

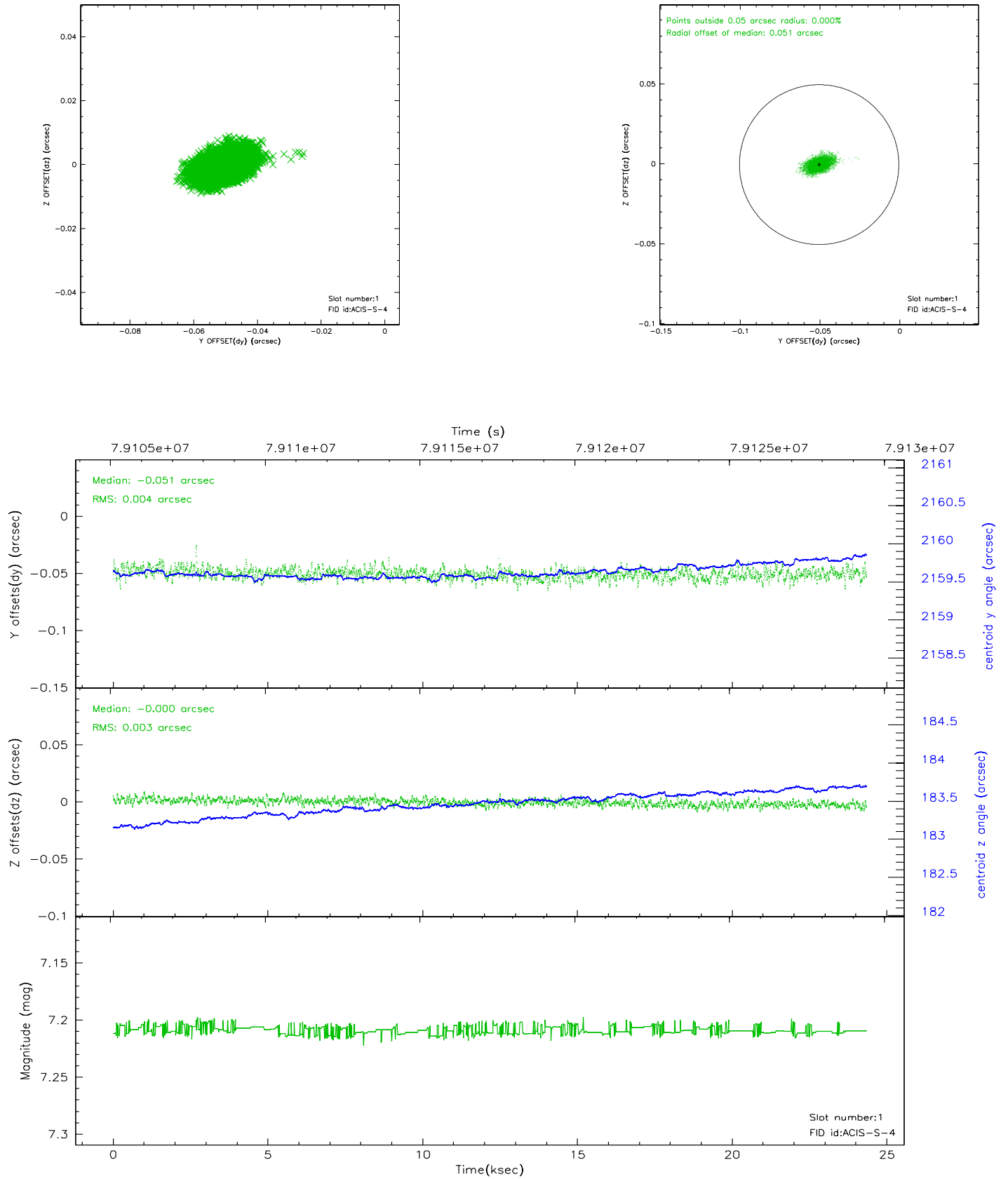


## 2.5 FID Slots

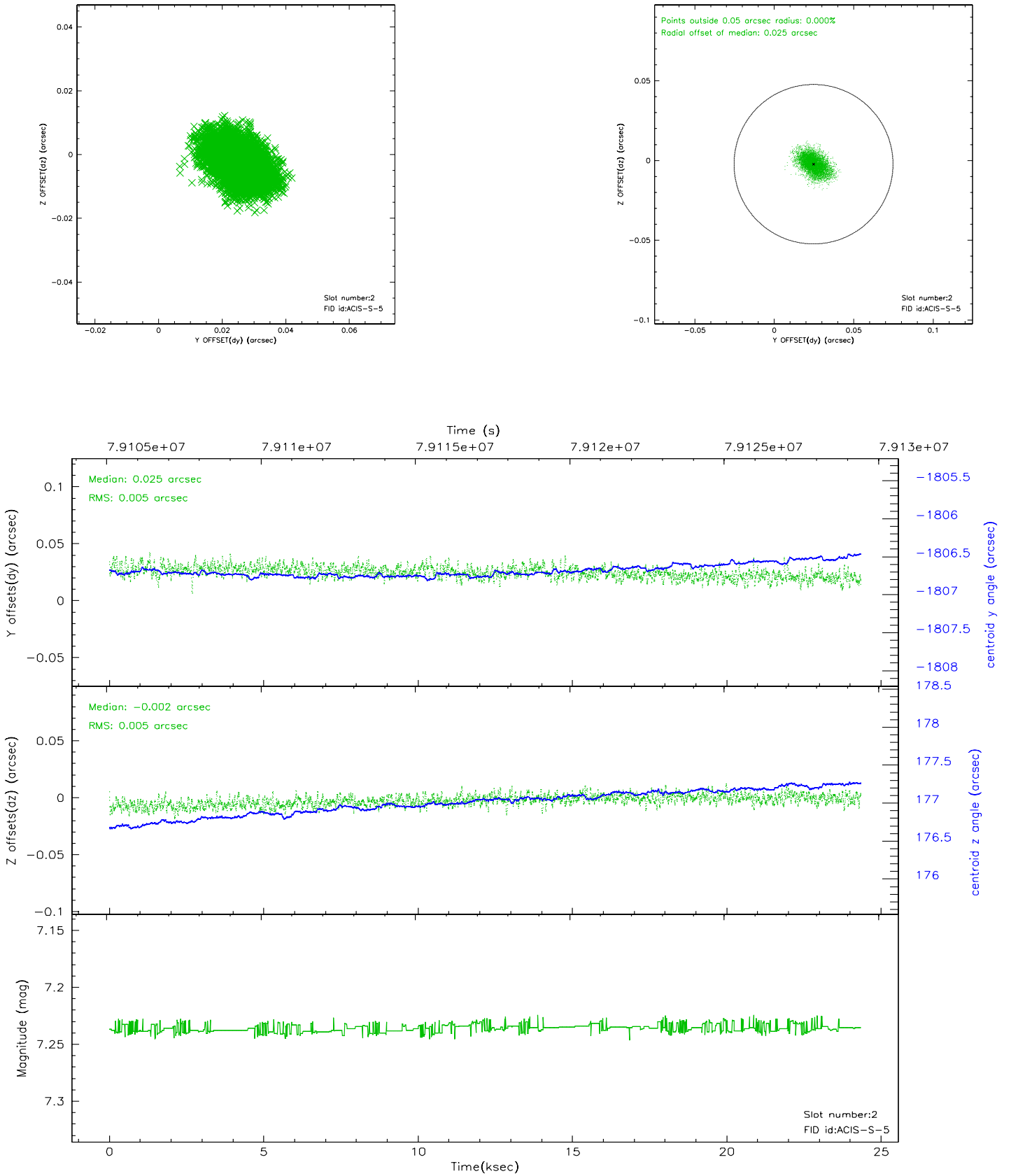
### 2.5.1 Slot 0



## 2.5.2 Slot 1

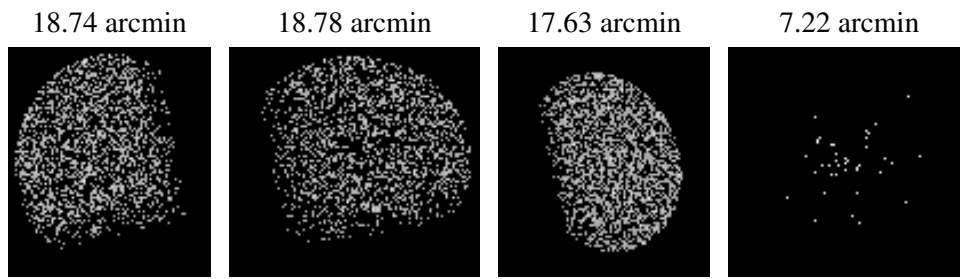


### 2.5.3 Slot 2





### 3 Point Sources



## A Summary

### A.1 Status

V&V Scientist	Beth Sundheim
V&V Date (YYYY-MM-DD)	2007.05.30
V&V Edition	1
V&V Disposition and Status	OK
V&V Charge Time	23.577

### A.2 Comments