

# V&V Reference Report

## L2 ASCDS Version : 8.4.4

Observation 8757 - L2 Version 2  
Chandra X-Ray Center

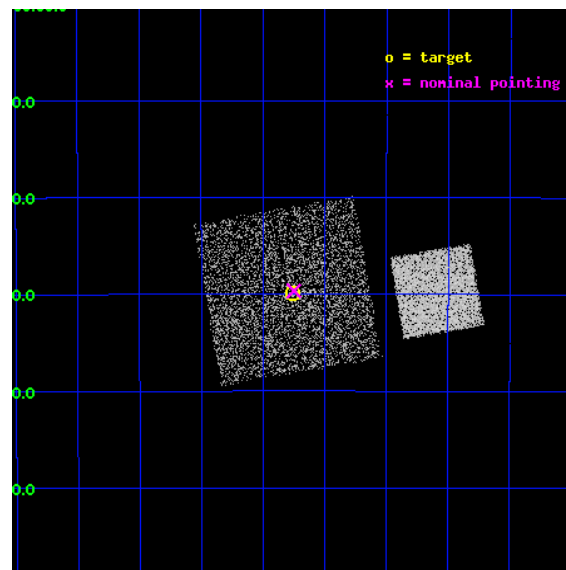
L2 Processing Date : May 14 2012

## Contents

<b>1</b>	<b>Front</b>	<b>2</b>
<b>2</b>	<b>OBI</b>	<b>3</b>
2.1	OBI . . . . .	3
2.1.1	Images . . . . .	3
2.1.2	Bias . . . . .	3
2.1.3	Parameters . . . . .	4
2.1.4	Events . . . . .	4
2.2	Compared Parameters . . . . .	5
2.3	Aspect . . . . .	6
2.4	Star Slots . . . . .	9
2.4.1	Slot 3 . . . . .	9
2.4.2	Slot 4 . . . . .	10
2.4.3	Slot 5 . . . . .	11
2.4.4	Slot 6 . . . . .	12
2.4.5	Slot 7 . . . . .	13
2.5	FID Slots . . . . .	14
2.5.1	Slot 0 . . . . .	14
2.5.2	Slot 1 . . . . .	15
2.5.3	Slot 2 . . . . .	16
<b>A</b>	<b>Summary</b>	<b>17</b>
A.1	Status . . . . .	17
A.2	Comments . . . . .	17

# 1 Front

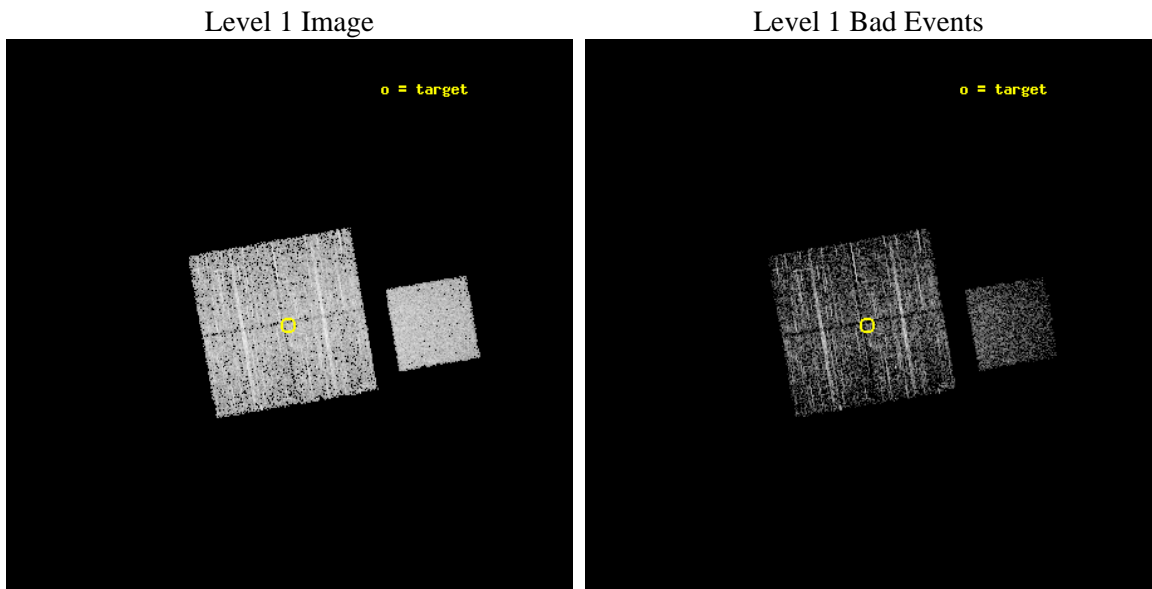
seq_num	400808	Sequence number
obs_id	8757	Observation id
title	The Galactic Bulge Survey: categorising the plethora of faint X-ray sources in the Galactic Bulge	Proposal title
observer	dr Peter Jonker	Principal investigator
object	GBS1	Source name
dtcycle	0	&#160
cycle	P	events from which exps? Prim/Second/Both
ra_targ	267.064395	Observer's specified target RA [deg]
dec_targ	-30.498898	Observer's specified target Dec [deg]
ra_nom	267.06242228143	Nominal RA [deg]
dec_nom	-30.494081253682	Nominal Dec [deg]
roll_nom	80.207708623252	Nominal Roll [deg]
revision	2	Processing version of data
ontime	2173.0590164065	Sum of GTIs [s]
livetime	2144.6664005744	Livetime [s]
ontime0	2176.200016737	Sum of GTIs [s]
ontime1	2173.0590164065	Sum of GTIs [s]
ontime2	2176.200016737	Sum of GTIs [s]
ontime3	2173.0590164065	Sum of GTIs [s]
ontime7	2176.200016737	Sum of GTIs [s]
l2events	15750	Number of level 2 events



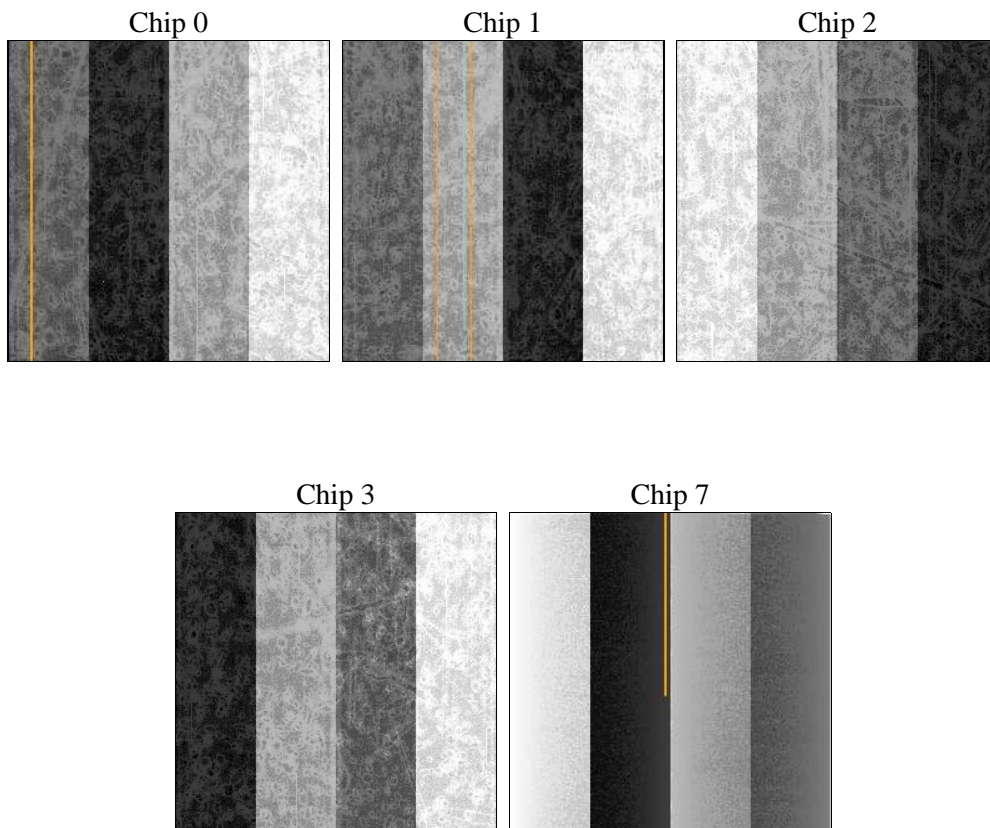
## 2 OBI

### 2.1 OBI

#### 2.1.1 Images



#### 2.1.2 Bias



### 2.1.3 Parameters

obi_num	0	Obi number	sched_exp_time	2000.000000	[s] Scheduled observation exposure time
ascdsver	8.4.4	Processing system revision	ontime	2173.0590164065	Sum of GTIs [s]
caldsver	4.4.9	&#160	ontime0	2176.200016737	Sum of GTIs [s]
date	2012-05-14T20:45:34	Date and time of file creation	ontime1	2173.0590164065	Sum of GTIs [s]
revision	2	Processing version of data	ontime2	2176.200016737	Sum of GTIs [s]
			ontime3	2173.0590164065	Sum of GTIs [s]
			ontime7	2176.200016737	Sum of GTIs [s]
			l1events	101185	Number of level 1 events

### 2.1.4 Events

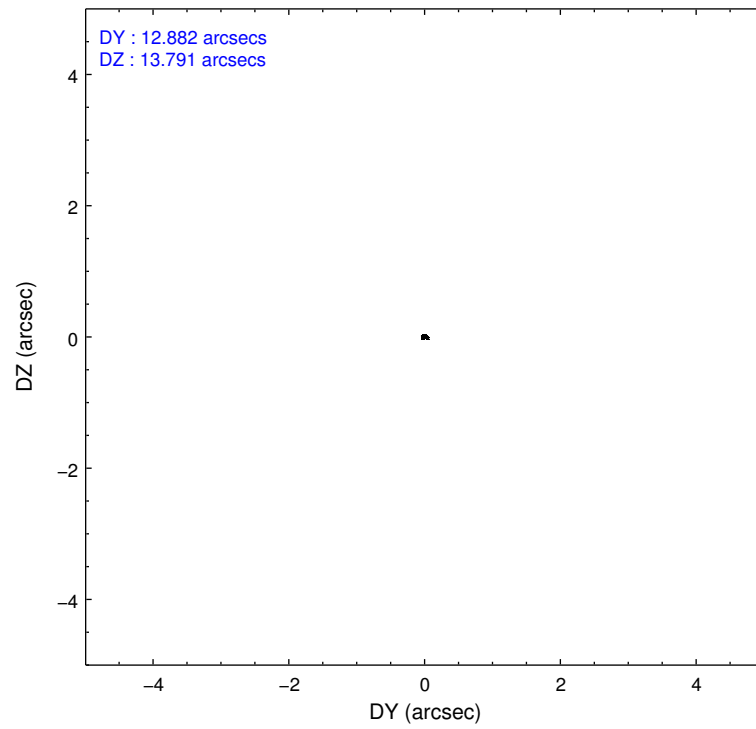
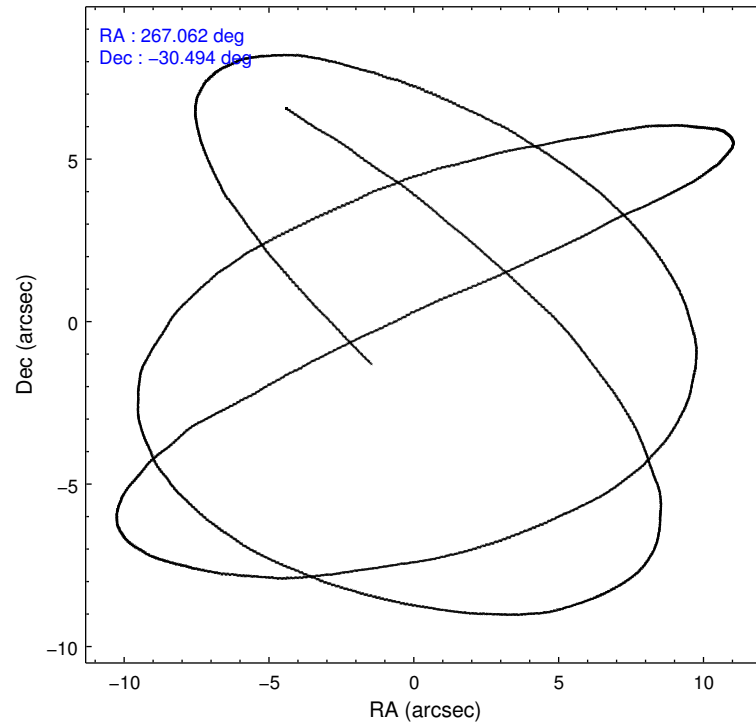
	ccd 0	ccd 1	ccd 2	ccd 3	ccd 7
level 1 events	18876	19536	20563	19570	22640
rejected events	16890	17261	18614	17615	13415
rejected %	89%	88%	90%	90%	59%

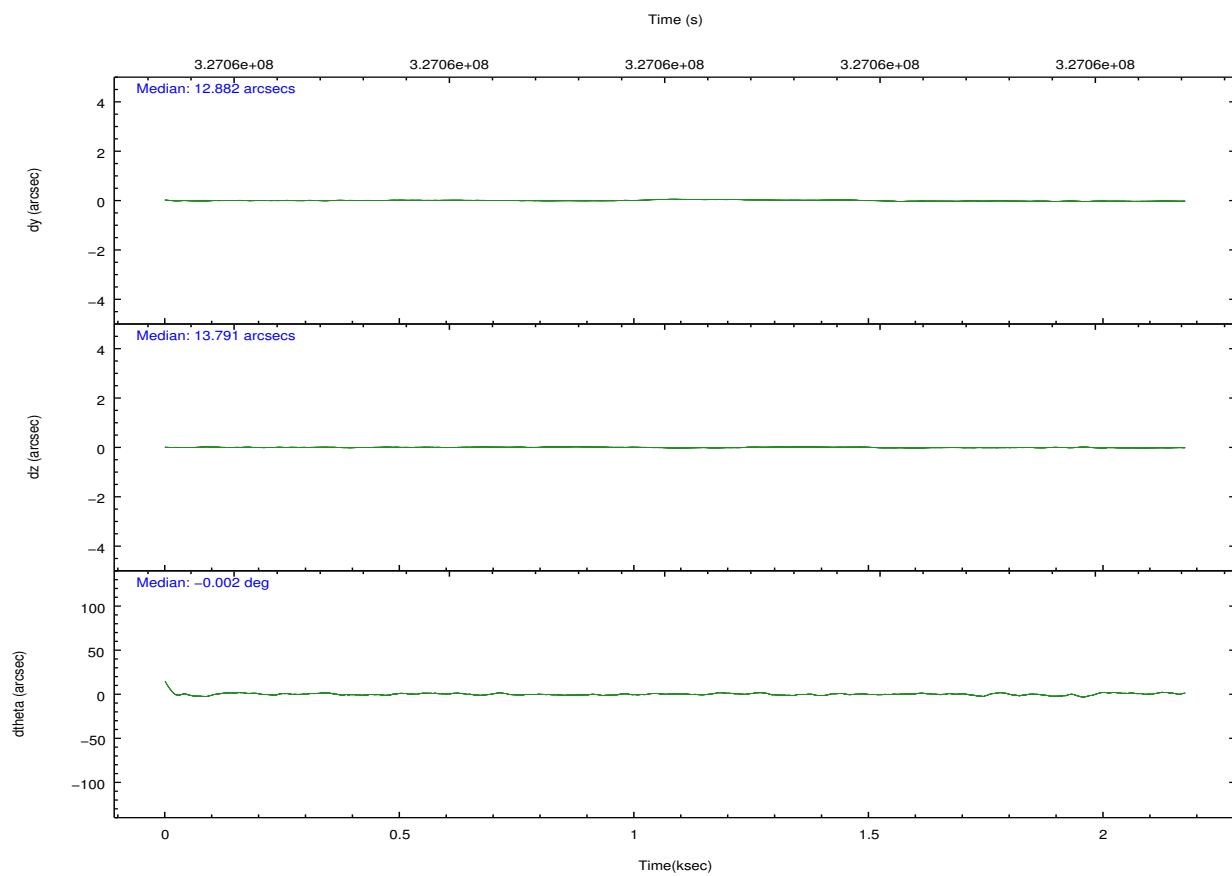
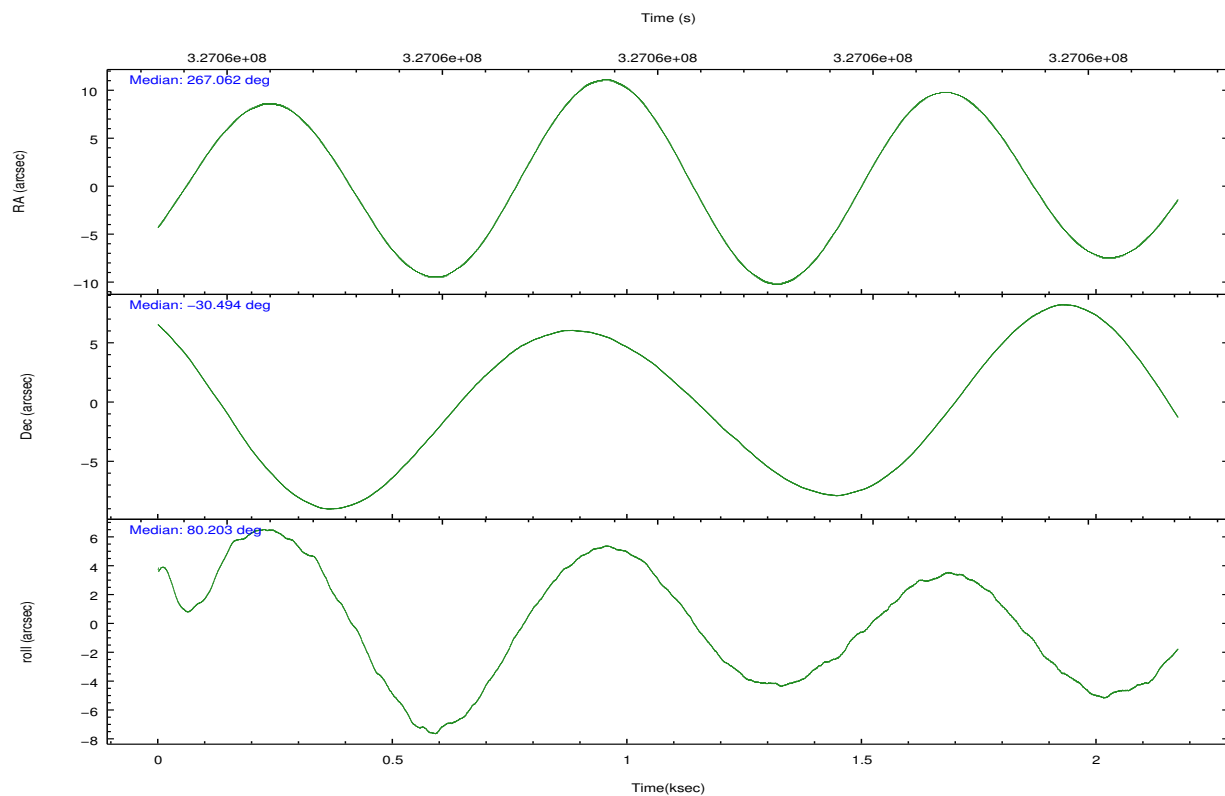
	ccd 0	ccd 1	ccd 2	ccd 3	ccd 7
grade 0 events	963	1050	929	995	991
	5%	5%	4%	5%	4%
grade 1 events	12	9	12	9	28
	0%	0%	0%	0%	0%
grade 2 events	503	588	472	460	2146
	2%	3%	2%	2%	9%
grade 3 events	248	235	228	213	988
	1%	1%	1%	1%	4%
grade 4 events	218	265	235	209	983
	1%	1%	1%	1%	4%
grade 5 events	648	764	629	798	2446
	3%	3%	3%	4%	10%
grade 6 events	368	494	386	396	5439
	1%	2%	1%	2%	24%
grade 7 events	15916	16131	17672	16490	9619
	84%	82%	85%	84%	42%

## 2.2 Compared Parameters

Parameter	Planned	Actual	Parameter	Planned	Actual
Instrument	ACIS	ACIS	Obspar format version number	7	7
Detector	ACIS-01237	ACIS-01237	Obspar file type	PREDICTED	ACTUAL
Grating	NONE	NONE	Obspar update status	NONE	UPDATED
Data mode	VFAINT	VFAINT	CCD I0 on	Y	Y
Observation mode	POINTING	POINTING	CCD I1 on	Y	Y
[deg] Pointing RA	267.073645	267.0624222814251	CCD I2 on	Y	Y
[deg] Pointing Dec	-30.519934	-30.49408125368175	CCD I3 on	Y	Y
[deg] Pointing Roll	80.004699	80.20770862325227	CCD S0 on	N	N
[mm] SIM focus pos	-0.782348	-0.7809083437167272	CCD S1 on	N	N
[mm] SIM defocus	0	0.001439871863259334	CCD S2 on	N	N
[mm] SIM translation stage pos	-233.592463	-233.5874344608287	CCD S3 on	O1	Y
[mm] SIM translation stage offset	0	-0.005018542100998502	CCD S4 on	N	N
[s] Observation start time (MET)	327056112.184000	327055736.38785	CCD S5 on	N	N
Observation start date	2008-05-13T08:54:07	2008-05-13T08:48:56	Number of optional ACIS chips dropped	0	0
[s] Observation end time (MET)	327058112.184000	327058245.58797	On-chip summing requested	N	N
Observation end date	2008-05-13T09:27:27	2008-05-13T09:30:45	Subarray requested	NONE	NONE
Read mode	TIMED	TIMED	Alternating exposures requested	N	N
			[s] Primary exposure time	0.000000	3.1

## 2.3 Aspect



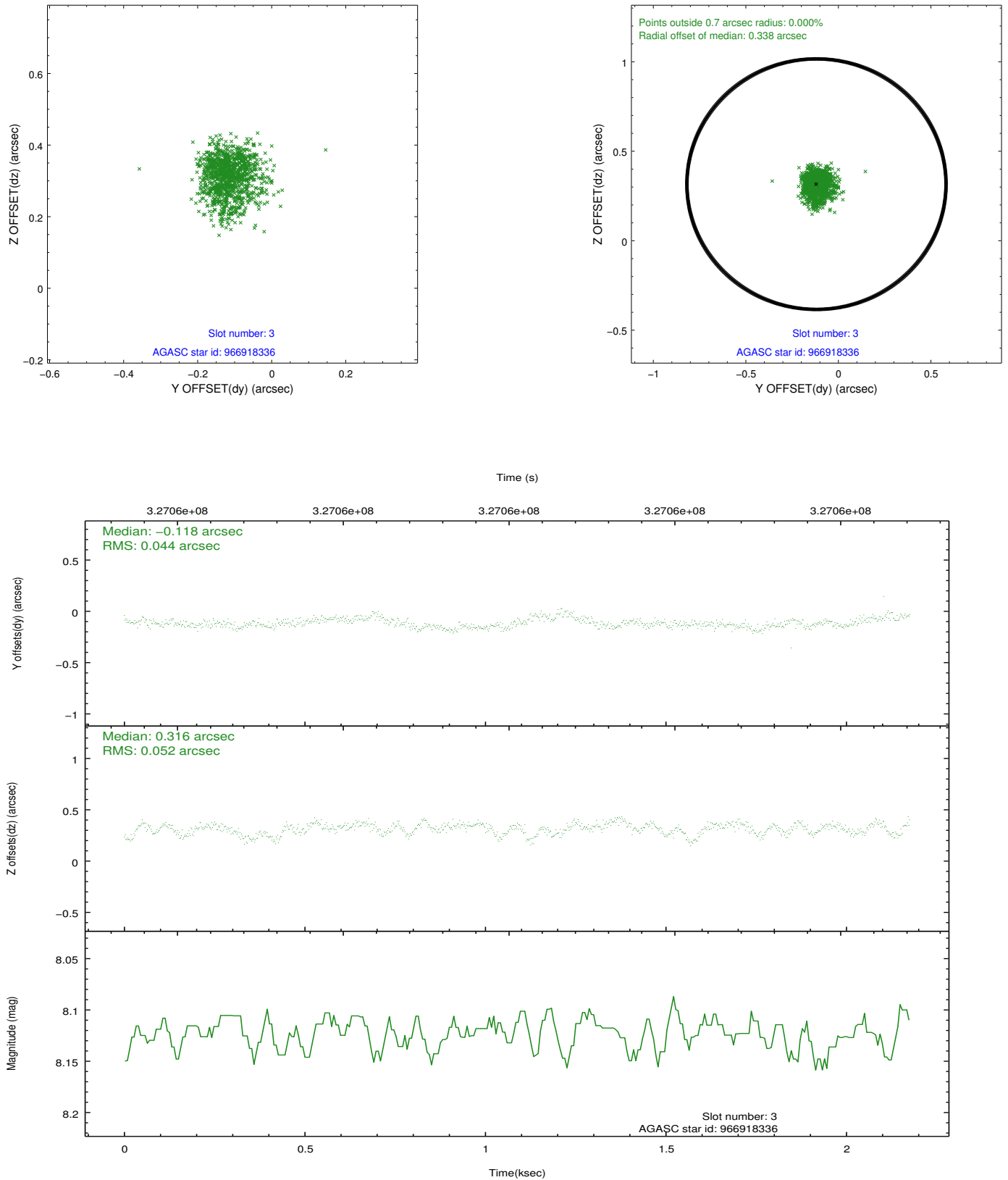


### Slot Statistics

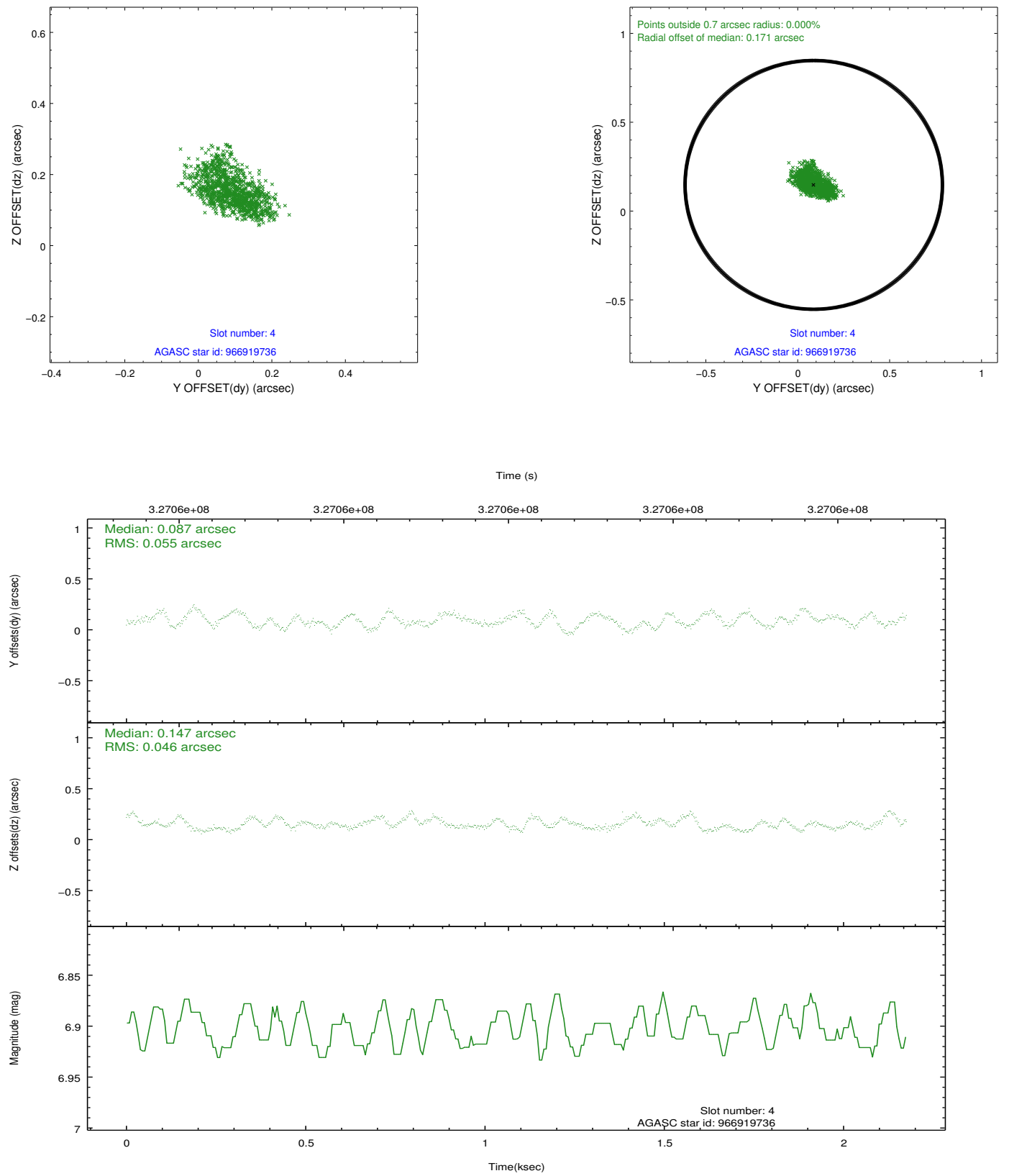
slot	status	id	mag	n_pts	med_dy	med_dz	dr1	dr2	ra	dec	mean_y	mean_z
0	FID	ACIS-I-2	6.95	531	-0.149	-0.063	0.008	0.025	0.000000	0.000000	-767.69	-843.77
1	FID	ACIS-I-4	6.97	531	0.098	0.084	0.008	0.015	0.000000	0.000000	2145.26	1061.00
2	FID	ACIS-I-6	7.04	531	-0.049	0.043	0.011	0.020	0.000000	0.000000	396.35	1706.57
3	GUIDE	966918336	8.12	1062	-0.118	0.316	0.072	0.117	267.709998	-30.955430	-1208.64	-2207.64
4	GUIDE	966919736	6.90	1062	0.087	0.147	0.078	0.120	267.322278	-30.597445	-143.33	-809.81
5	GUIDE	966925632	8.92	1059	0.078	-0.151	0.075	0.124	266.388610	-30.982191	-2013.02	1791.35
6	GUIDE	966926496	8.10	1062	-0.004	-0.124	0.070	0.111	267.109389	-30.299474	798.65	30.29
7	GUIDE	966925512	8.27	1061	-0.043	-0.189	0.063	0.103	266.373606	-31.056700	-2284.17	1789.37

## 2.4 Star Slots

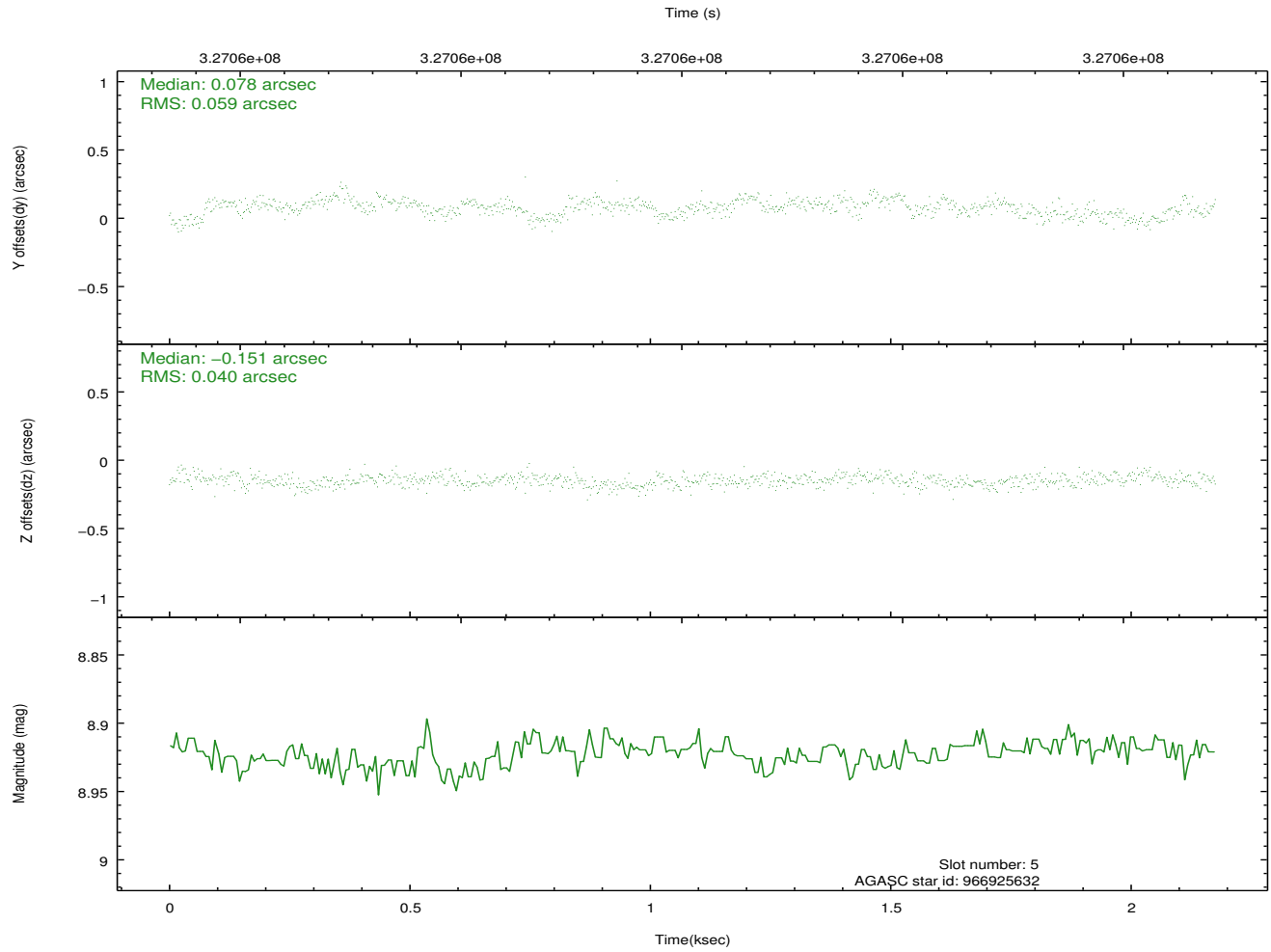
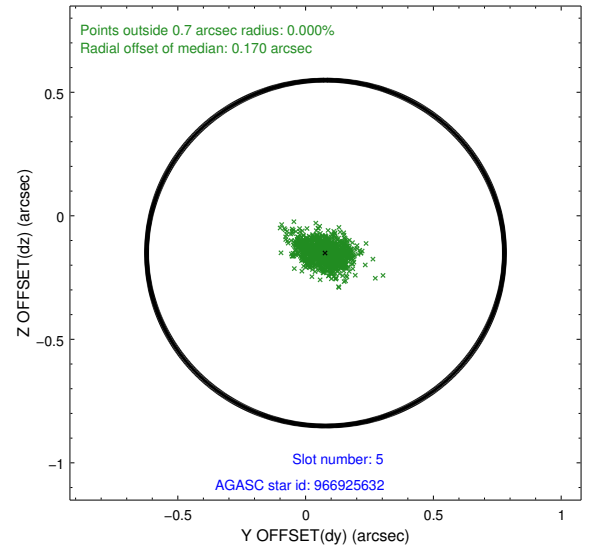
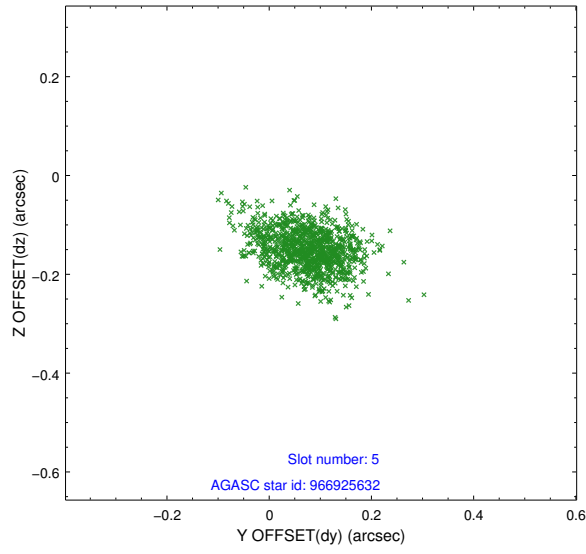
### 2.4.1 Slot 3



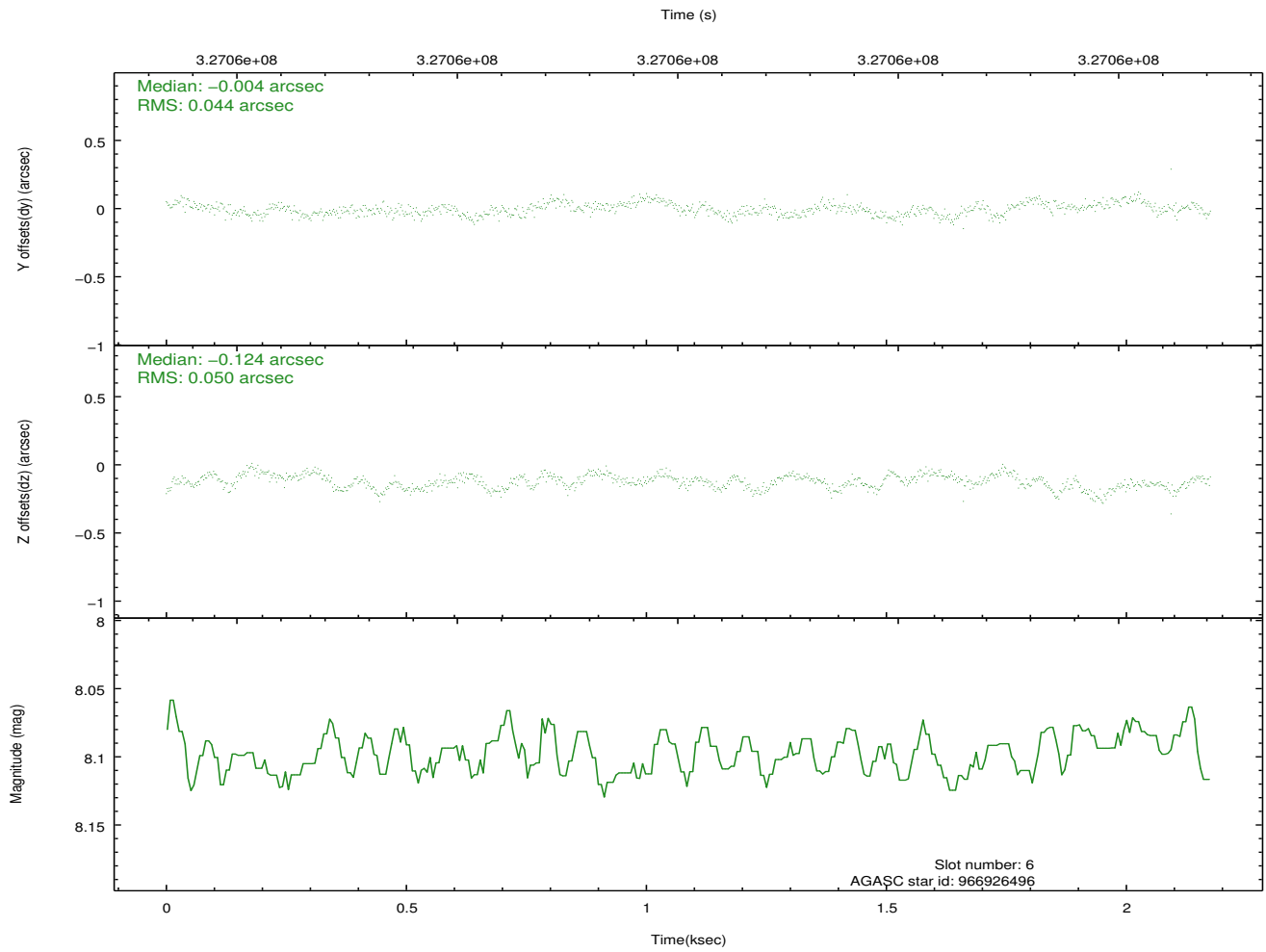
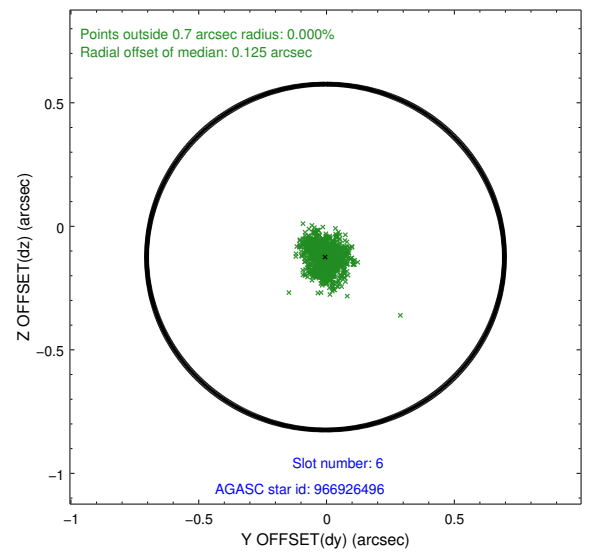
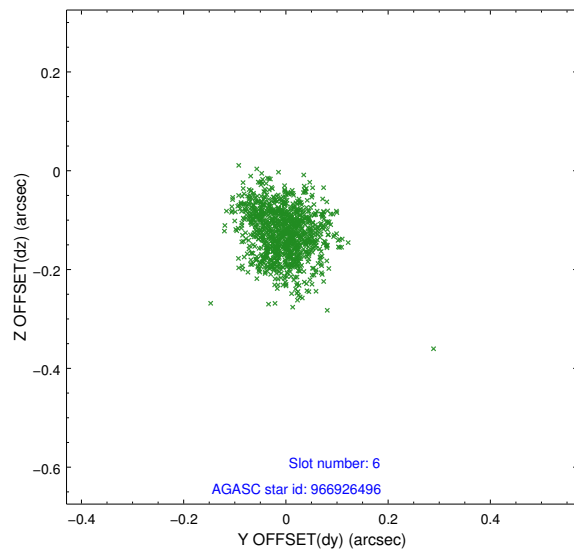
## 2.4.2 Slot 4



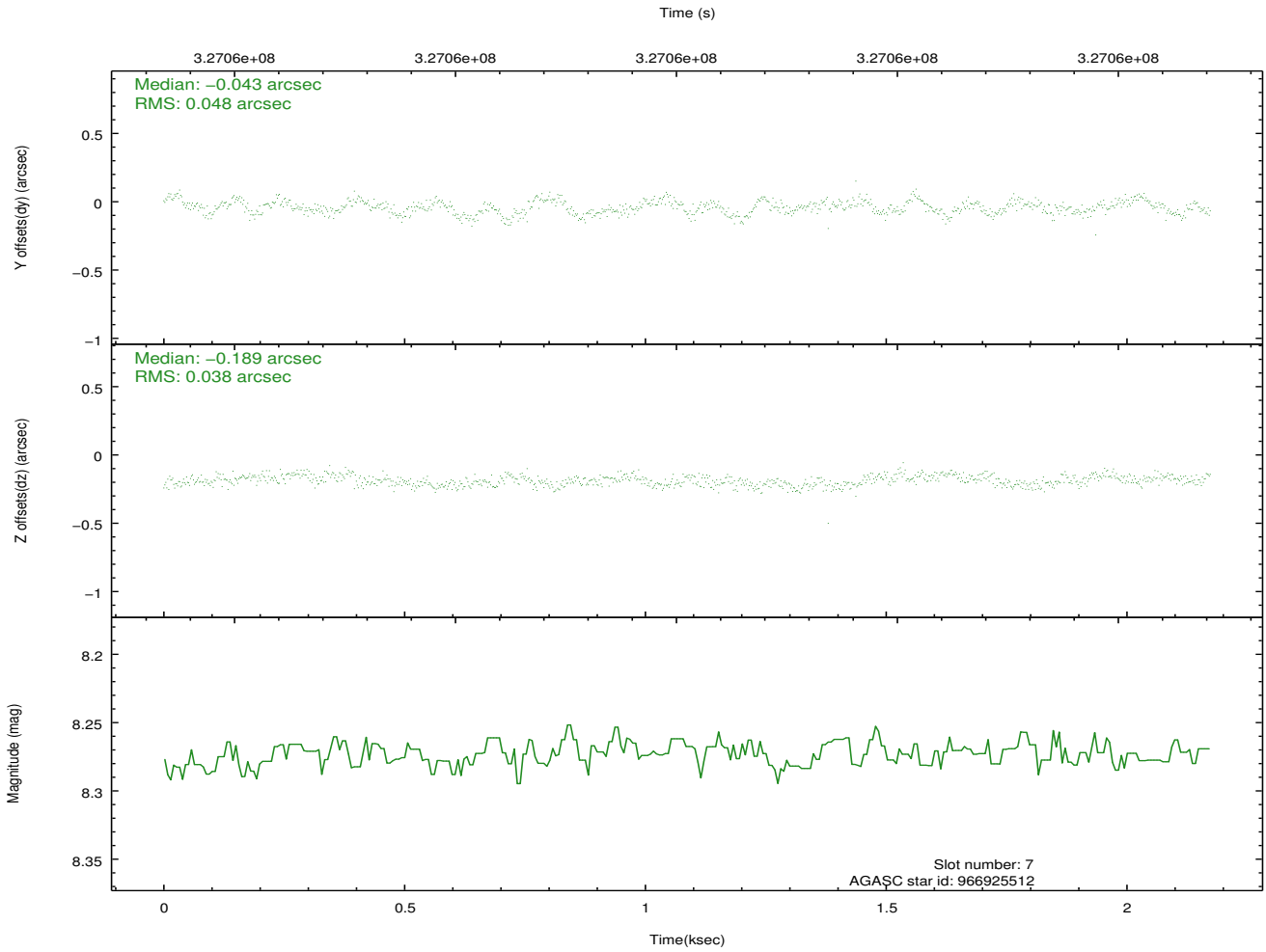
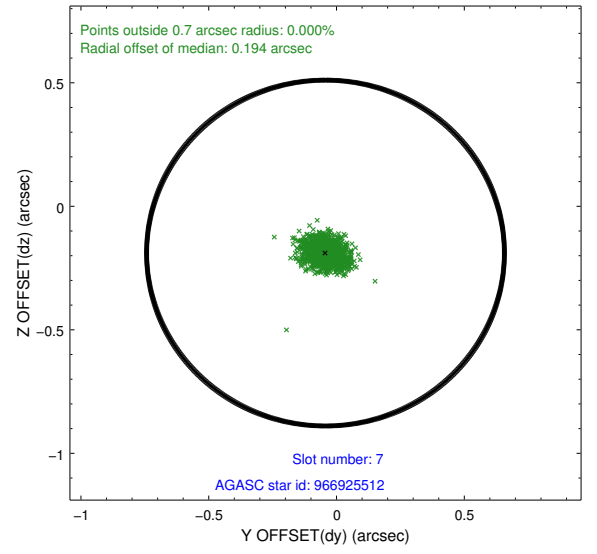
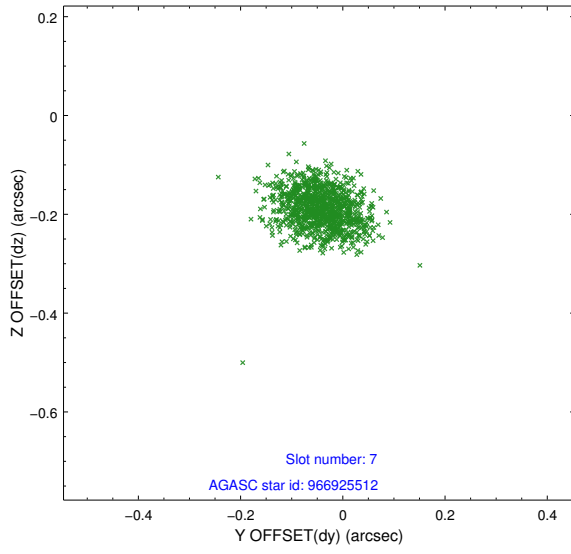
### 2.4.3 Slot 5



## 2.4.4 Slot 6

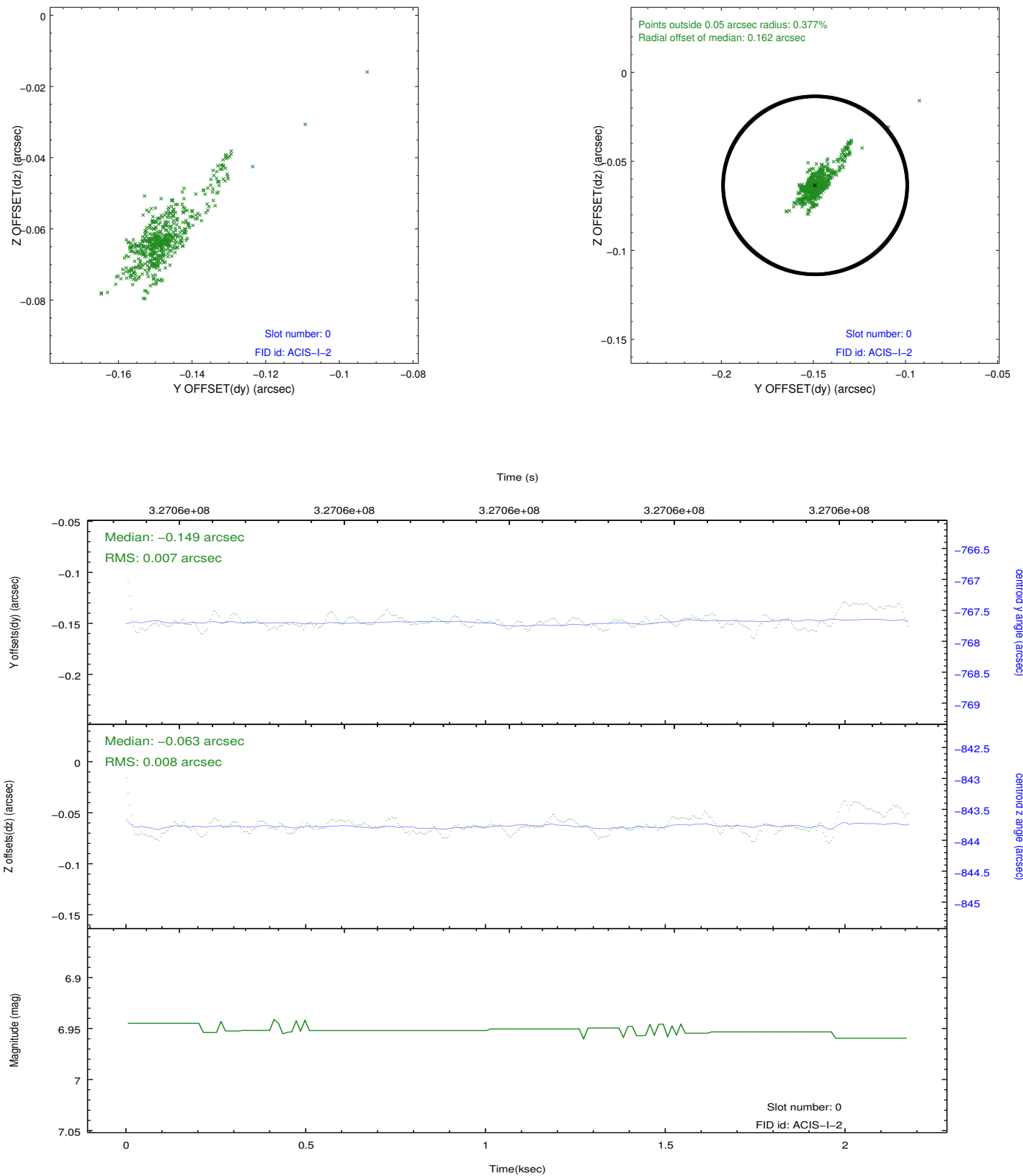


## 2.4.5 Slot 7

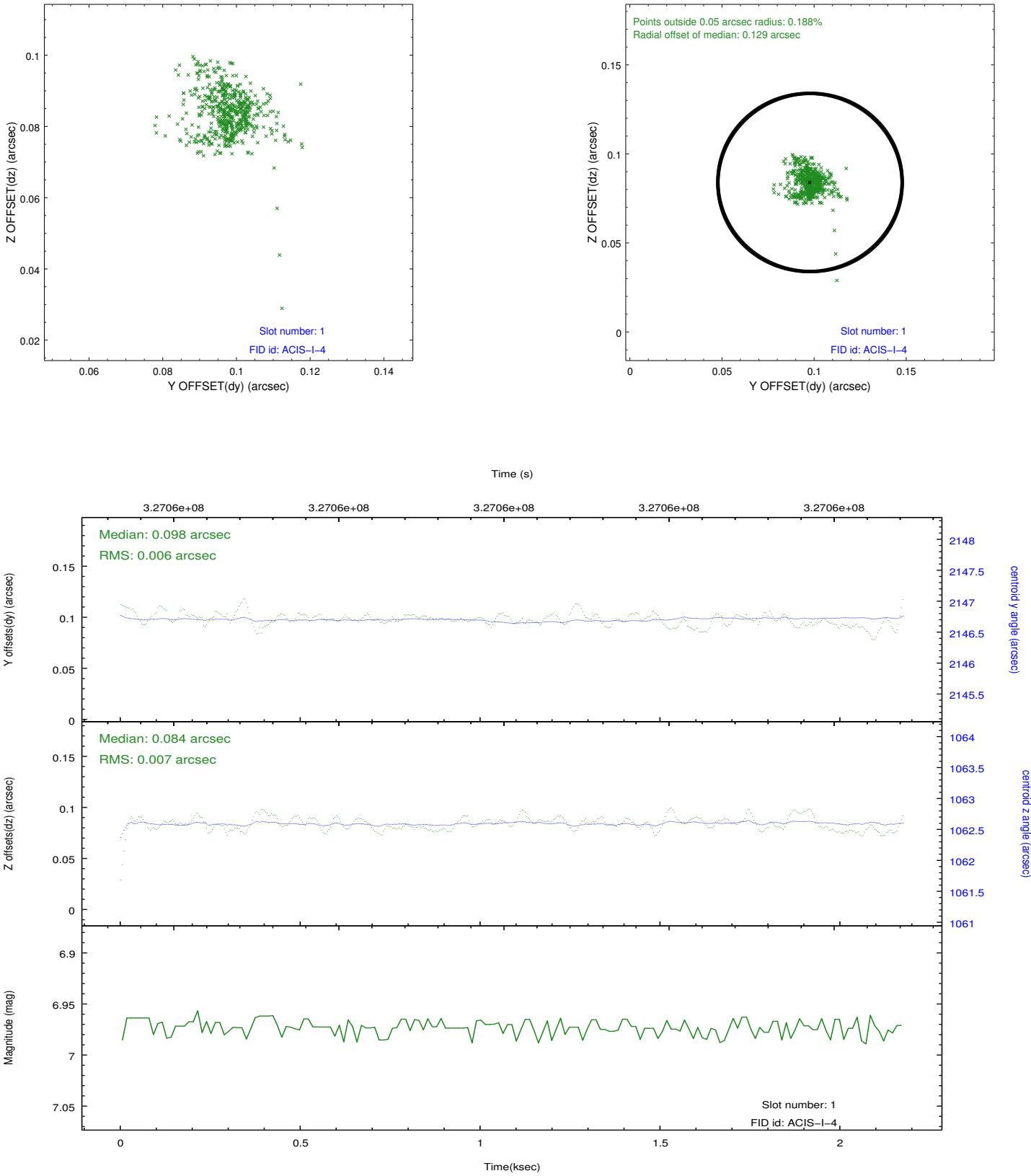


## 2.5 FID Slots

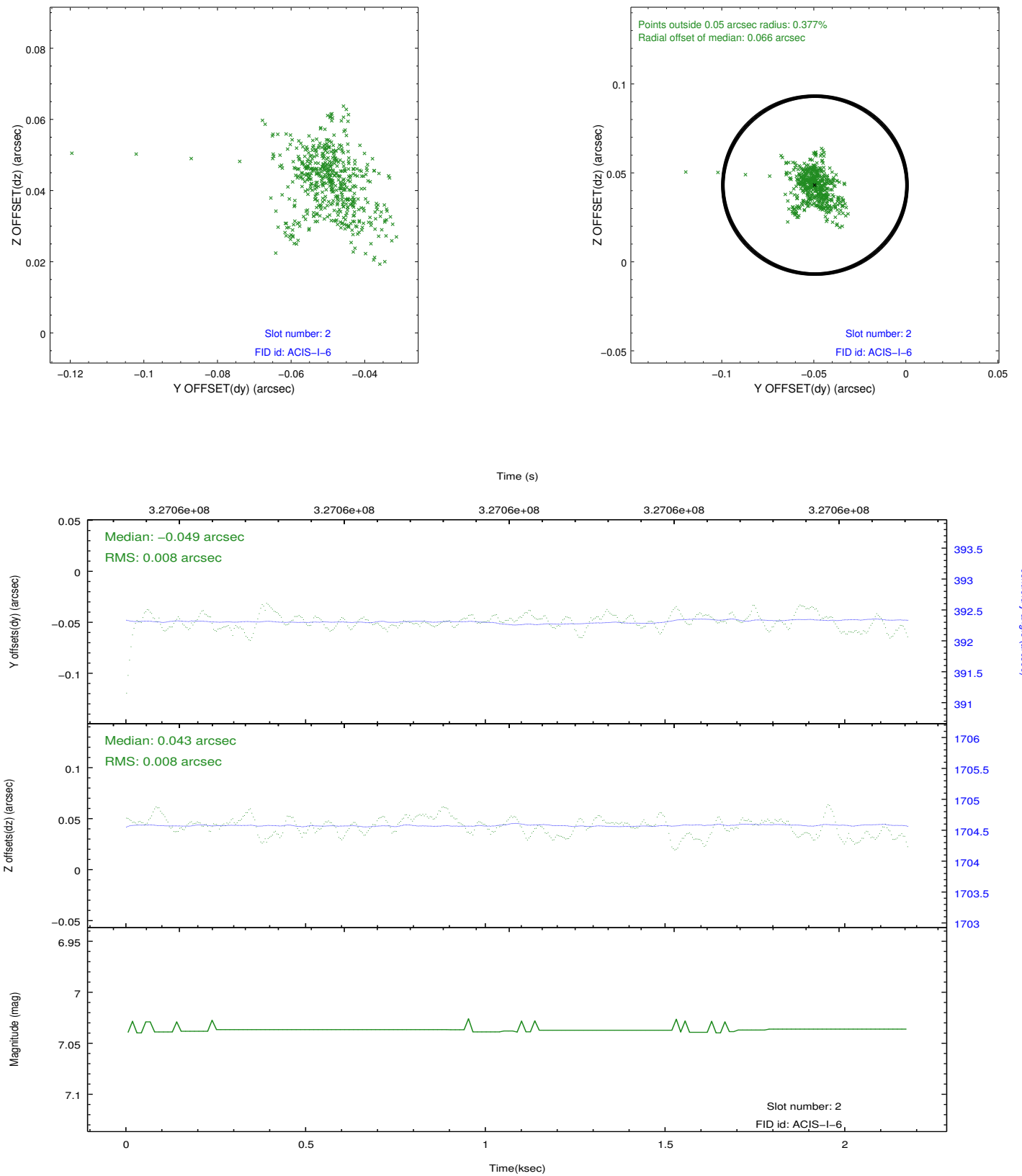
### 2.5.1 Slot 0



2.5.2 Slot 1



### 2.5.3 Slot 2



## A Summary

### A.1 Status

V&V Scientist	Beth Sundheim
V&V Date (YYYY-MM-DD)	2012.05.17
V&V Edition	1
V&V Disposition and Status	OK
V&V Charge Time	2.17305901

### A.2 Comments

Joint proposal with NOAO.