

V&V Reference Report

L2 ASCDS Version : 8.4.4

Observation 8637 - L2 Version 2
Chandra X-Ray Center

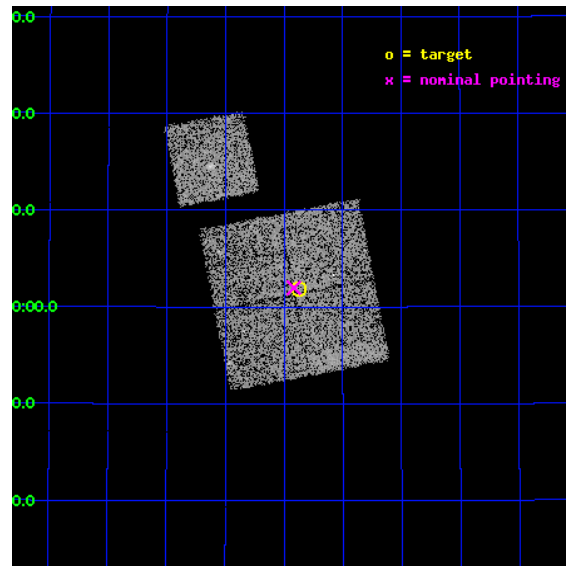
L2 Processing Date : May 5 2012

Contents

| | | |
|----------|-------------------------------|-----------|
| 1 | Front | 2 |
| 2 | OBI | 3 |
| 2.1 | OBI | 3 |
| 2.1.1 | Images | 3 |
| 2.1.2 | Bias | 3 |
| 2.1.3 | Parameters | 4 |
| 2.1.4 | Events | 4 |
| 2.2 | Compared Parameters | 5 |
| 2.3 | Aspect | 6 |
| 2.4 | Star Slots | 9 |
| 2.4.1 | Slot 3 | 9 |
| 2.4.2 | Slot 4 | 10 |
| 2.4.3 | Slot 5 | 11 |
| 2.4.4 | Slot 6 | 12 |
| 2.4.5 | Slot 7 | 13 |
| 2.5 | FID Slots | 14 |
| 2.5.1 | Slot 0 | 14 |
| 2.5.2 | Slot 1 | 15 |
| 2.5.3 | Slot 2 | 16 |
| A | Summary | 17 |
| A.1 | Status | 17 |
| A.2 | Comments | 17 |

1 Front

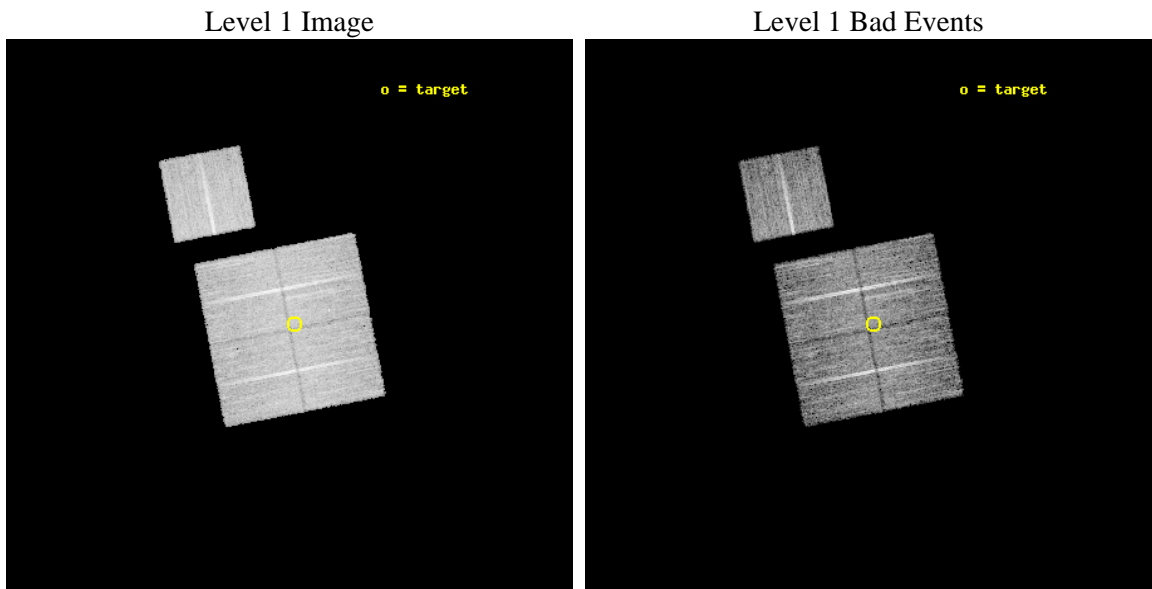
| | | |
|----------|--|---|
| seq_num | 900774 | Sequence number |
| obs_id | 8637 | Observation id |
| title | Chandra Observations of the DEEP2 Fields | Proposal title |
| observer | Dr. Stephen Murray | Principal investigator |
| object | DEEP2 Field 2 | Source name |
| dtcycle | 0 | |
| cycle | P | events from which exps? Prim/Second/Both |
| ra_targ | 251.71914 | Observer's specified target RA [deg] |
| dec_targ | 35.032163 | Observer's specified target Dec [deg] |
| ra_nom | 251.72893666153 | Nominal RA [deg] |
| dec_nom | 35.033065645287 | Nominal Dec [deg] |
| roll_nom | 349.10305478538 | Nominal Roll [deg] |
| revision | 2 | Processing version of data |
| ontime | 8713.5660267472 | Sum of GTIs [s] |
| livetime | 8599.7168717738 | Livetime [s] |
| ontime0 | 8713.4428868294 | Sum of GTIs [s] |
| ontime1 | 8713.4839168191 | Sum of GTIs [s] |
| ontime2 | 8710.3840563893 | Sum of GTIs [s] |
| ontime3 | 8713.5660267472 | Sum of GTIs [s] |
| ontime6 | 8716.5428270698 | Sum of GTIs [s] |
| l2events | 29178 | Number of level 2 events |



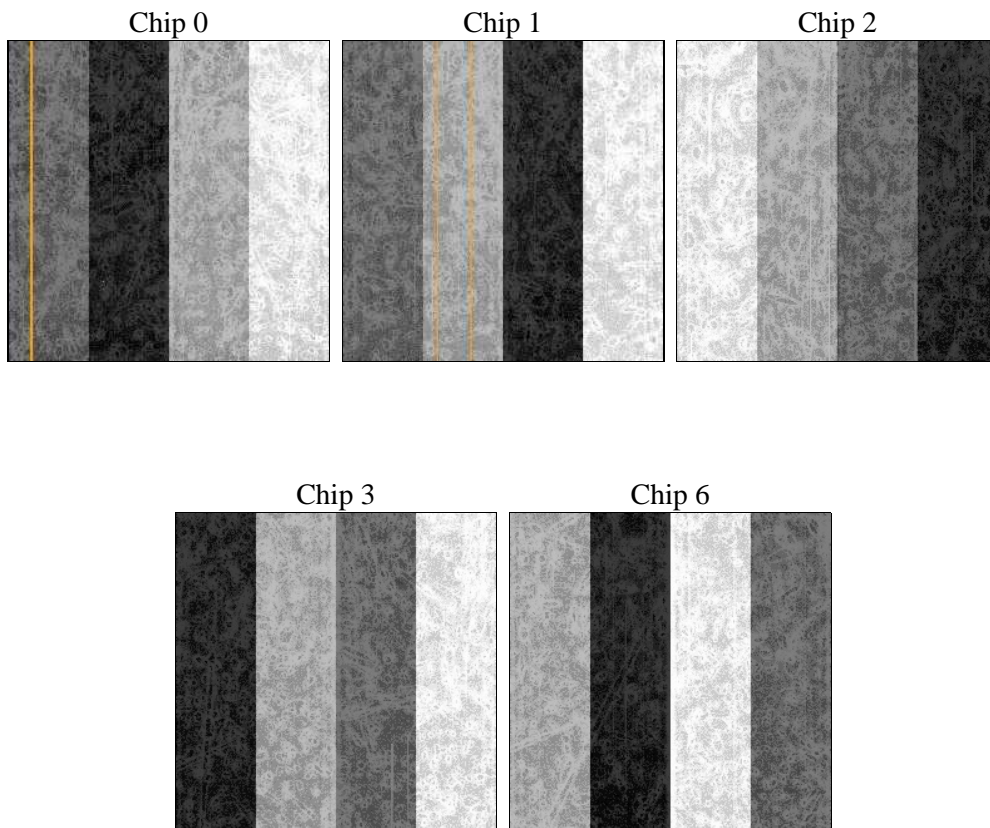
2 OBI

2.1 OBI

2.1.1 Images



2.1.2 Bias



2.1.3 Parameters

| | | | | | |
|----------|---------------------|--------------------------------|----------------|-----------------|---|
| obi_num | 0 | Obi number | sched_exp_time | 8941.000000 | [s] Scheduled observation exposure time |
| ascdsver | 8.4.4 | Processing system revision | ontime | 8713.5660267472 | Sum of GTIs [s] |
| caldsver | 4.4.9 | | ontime0 | 8713.4428868294 | Sum of GTIs [s] |
| date | 2012-05-05T05:19:21 | Date and time of file creation | ontime1 | 8713.4839168191 | Sum of GTIs [s] |
| revision | 2 | Processing version of data | ontime2 | 8710.3840563893 | Sum of GTIs [s] |
| | | | ontime3 | 8713.5660267472 | Sum of GTIs [s] |
| | | | ontime6 | 8716.5428270698 | Sum of GTIs [s] |
| | | | l1events | 340796 | Number of level 1 events |

2.1.4 Events

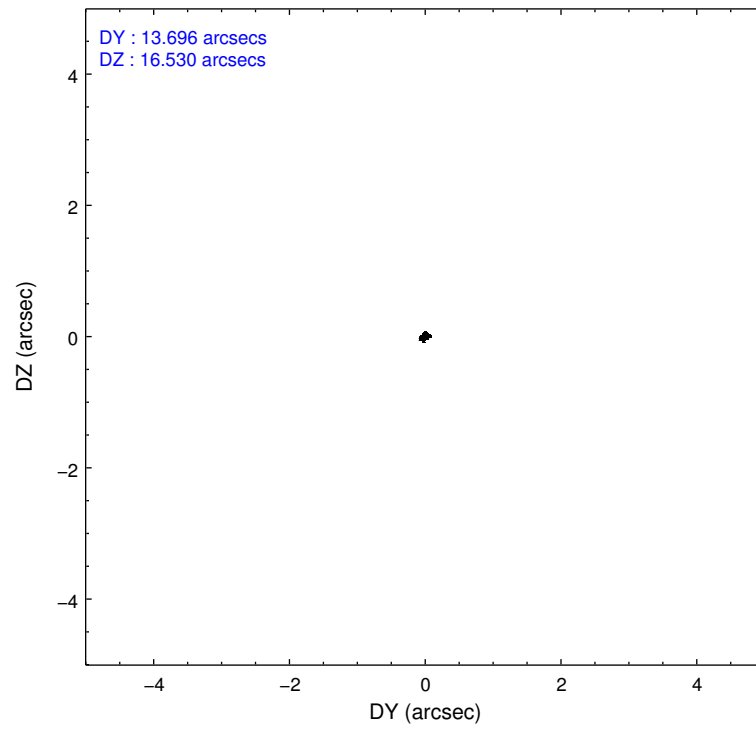
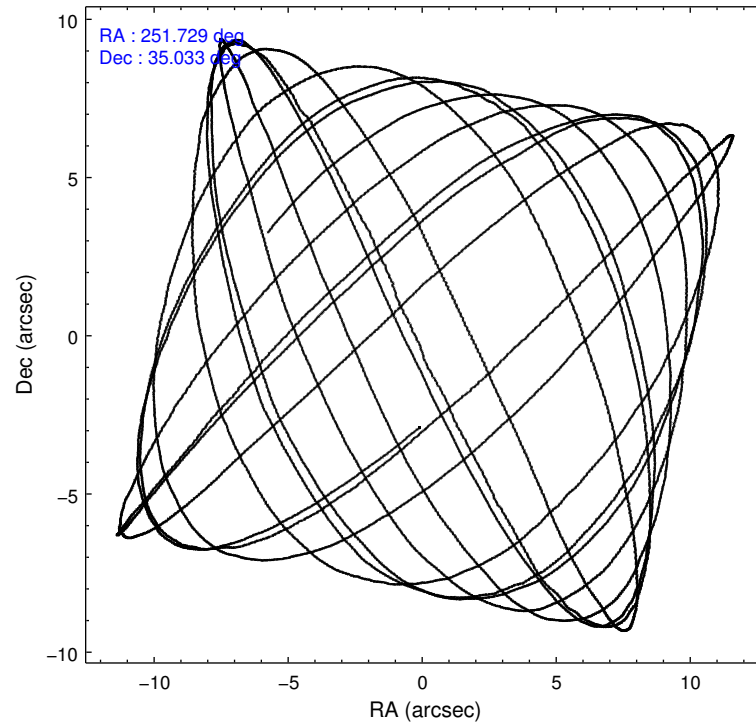
| | ccd 0 | ccd 1 | ccd 2 | ccd 3 | ccd 6 |
|-----------------|-------|-------|-------|-------|-------|
| level 1 events | 64143 | 65862 | 70507 | 67755 | 72529 |
| rejected events | 57379 | 58134 | 63926 | 61105 | 65224 |
| rejected % | 89% | 88% | 90% | 90% | 89% |

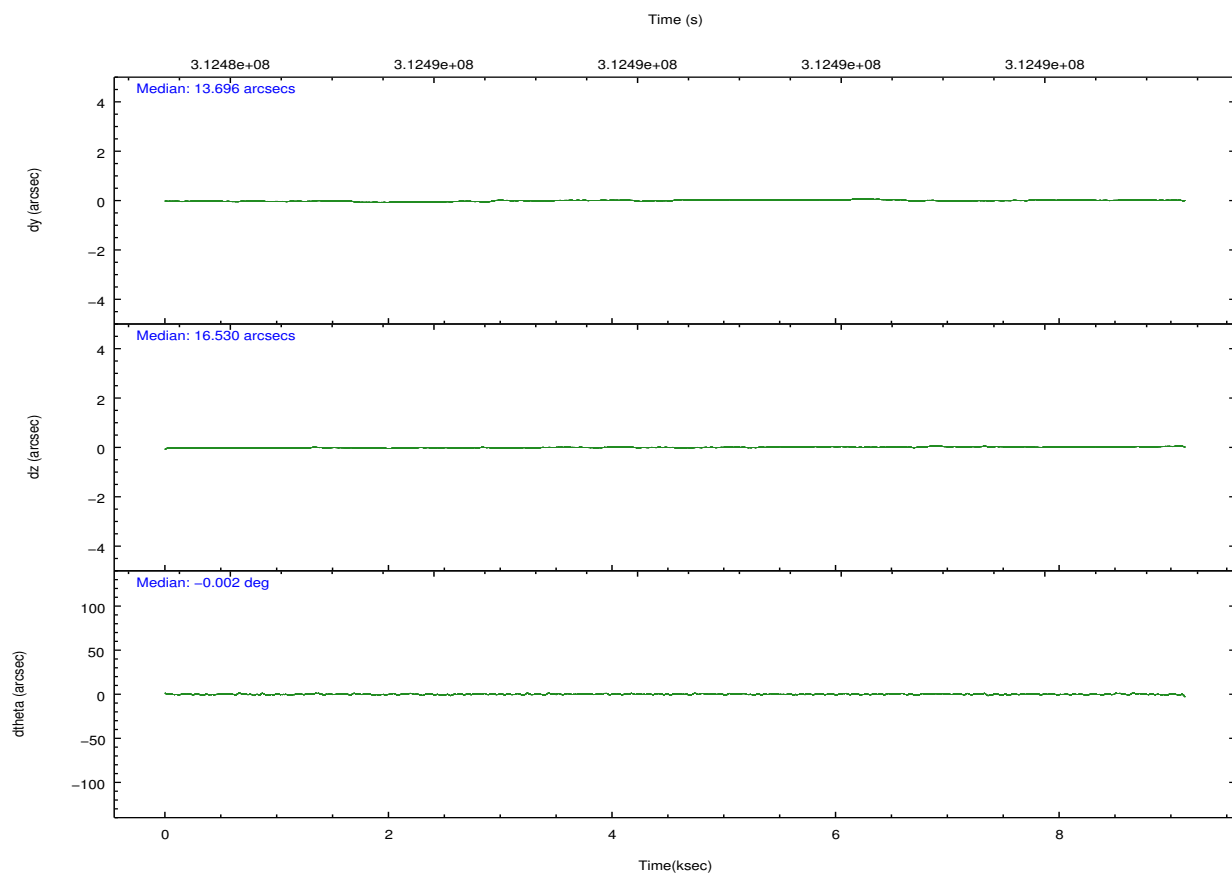
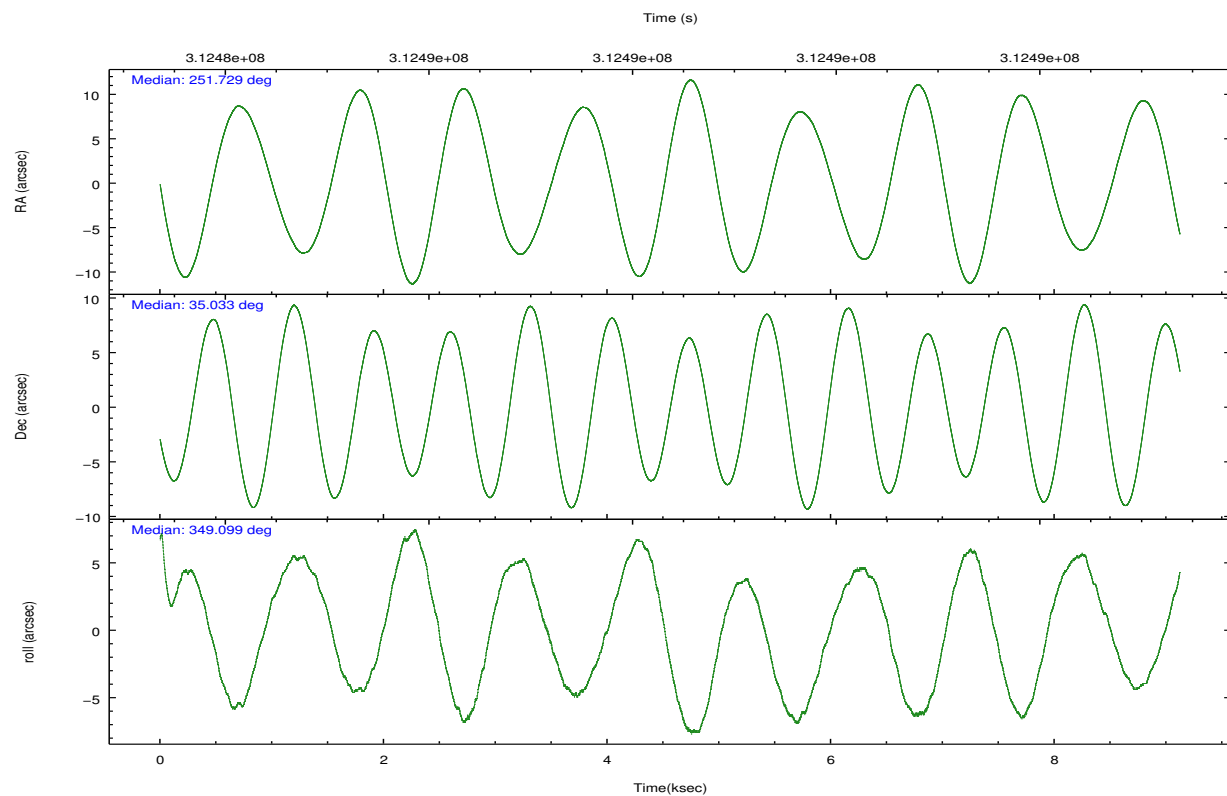
| | ccd 0 | ccd 1 | ccd 2 | ccd 3 | ccd 6 |
|----------------|-------|-------|-------|-------|-------|
| grade 0 events | 2288 | 2676 | 2413 | 2427 | 2671 |
| | 3% | 4% | 3% | 3% | 3% |
| grade 1 events | 32 | 33 | 28 | 38 | 28 |
| | 0% | 0% | 0% | 0% | 0% |
| grade 2 events | 1687 | 1777 | 1548 | 1412 | 1586 |
| | 2% | 2% | 2% | 2% | 2% |
| grade 3 events | 748 | 844 | 695 | 786 | 782 |
| | 1% | 1% | 0% | 1% | 1% |
| grade 4 events | 733 | 857 | 680 | 728 | 770 |
| | 1% | 1% | 0% | 1% | 1% |
| grade 5 events | 2327 | 2687 | 2356 | 2815 | 2813 |
| | 3% | 4% | 3% | 4% | 3% |
| grade 6 events | 1311 | 1581 | 1253 | 1301 | 1498 |
| | 2% | 2% | 1% | 1% | 2% |
| grade 7 events | 55017 | 55407 | 61534 | 58248 | 62381 |
| | 85% | 84% | 87% | 85% | 86% |

2.2 Compared Parameters

| Parameter | Planned | Actual | Parameter | Planned | Actual |
|-----------------------------------|---------------------|-----------------------|---------------------------------------|-----------|---------|
| Instrument | ACIS | ACIS | Obspar format version number | 7 | 7 |
| Detector | ACIS-01236 | ACIS-01236 | Obspar file type | PREDICTED | ACTUAL |
| Grating | NONE | NONE | Obspar update status | NONE | UPDATED |
| Data mode | VFAINT | VFAINT | CCD I0 on | Y | Y |
| Observation mode | POINTING | POINTING | CCD I1 on | Y | Y |
| [deg] Pointing RA | 251.697259 | 251.72893666153 | CCD I2 on | Y | Y |
| [deg] Pointing Dec | 35.023954 | 35.03306564528701 | CCD I3 on | Y | Y |
| [deg] Pointing Roll | 348.912560 | 349.1030547853808 | CCD S0 on | N | N |
| [mm] SIM focus pos | -0.782348 | -0.7809083437167272 | CCD S1 on | N | N |
| [mm] SIM defocus | 0 | 0.001439871863259334 | CCD S2 on | O1 | Y |
| [mm] SIM translation stage pos | -233.592463 | -233.5874344608287 | CCD S3 on | N | N |
| [mm] SIM translation stage offset | 0 | -0.005018542100998502 | CCD S4 on | N | N |
| [s] Observation start time (MET) | 312483993.184000 | 312483617.15544 | CCD S5 on | N | N |
| Observation start date | 2007-11-26T17:05:28 | 2007-11-26T17:00:17 | Number of optional ACIS chips dropped | 0 | 0 |
| [s] Observation end time (MET) | 312492934.184000 | 312493078.93089 | On-chip summing requested | N | N |
| Observation end date | 2007-11-26T19:34:29 | 2007-11-26T19:37:58 | Subarray requested | NONE | NONE |
| Read mode | TIMED | TIMED | Alternating exposures requested | N | N |
| | | | [s] Primary exposure time | 0.000000 | 3.1 |

2.3 Aspect



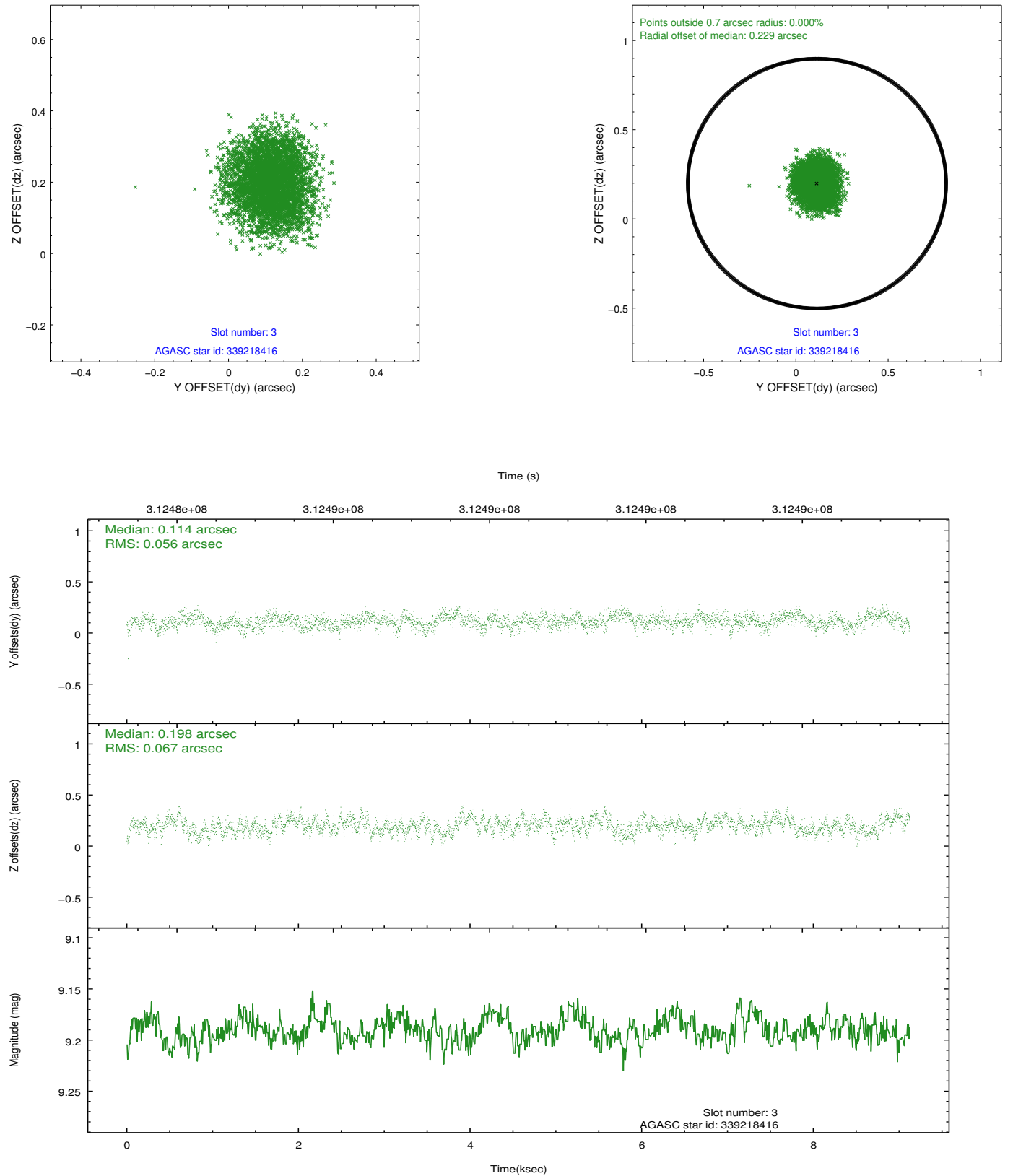


Slot Statistics

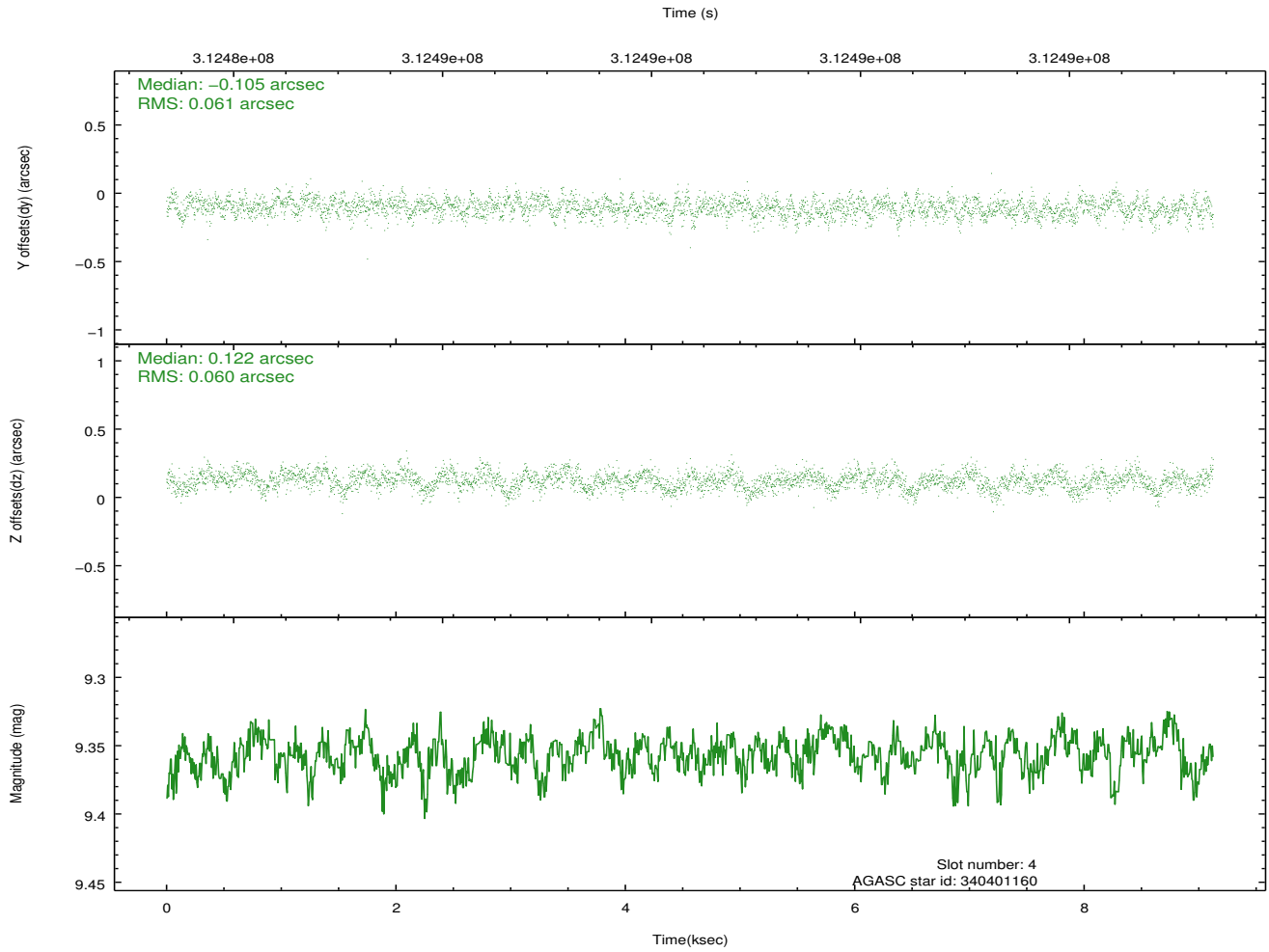
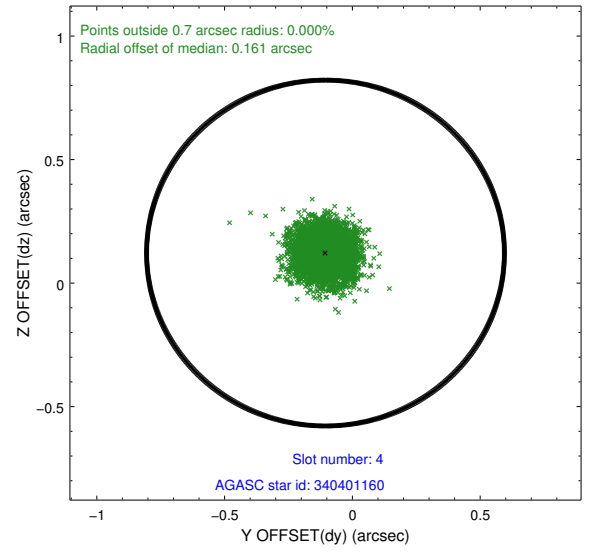
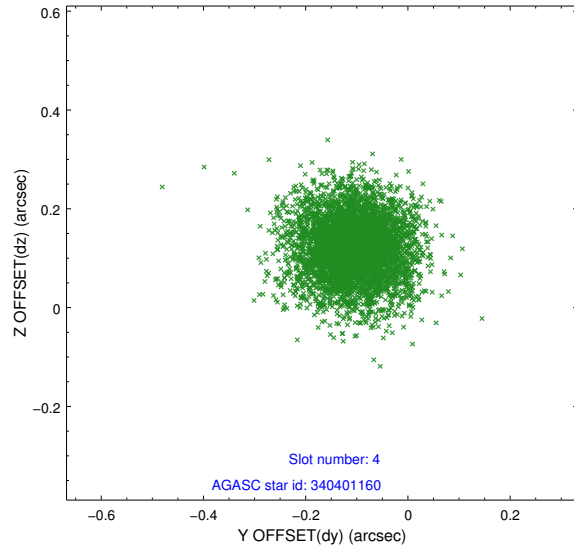
| slot | status | id | mag | n_pts | med_dy | med_dz | dr1 | dr2 | ra | dec | mean_y | mean_z |
|------|--------|-----------|------|-------|--------|--------|-------|-------|------------|-----------|----------|----------|
| 0 | FID | ACIS-I-1 | 7.22 | 2226 | 0.082 | -0.026 | 0.009 | 0.015 | 0.000000 | 0.000000 | 925.88 | -840.20 |
| 1 | FID | ACIS-I-2 | 7.15 | 2226 | -0.036 | -0.043 | 0.010 | 0.018 | 0.000000 | 0.000000 | -768.00 | -846.95 |
| 2 | FID | ACIS-I-5 | 7.21 | 2226 | -0.139 | 0.139 | 0.011 | 0.019 | 0.000000 | 0.000000 | -1822.88 | 1057.16 |
| 3 | GUIDE | 339218416 | 9.19 | 4450 | 0.114 | 0.198 | 0.095 | 0.148 | 251.185123 | 35.007242 | -1470.62 | -345.76 |
| 4 | GUIDE | 340401160 | 9.36 | 4449 | -0.105 | 0.122 | 0.091 | 0.147 | 252.460112 | 35.243739 | 2047.06 | 1216.59 |
| 5 | GUIDE | 340406200 | 6.69 | 4452 | -0.046 | -0.334 | 0.065 | 0.099 | 252.267621 | 34.956301 | 1698.04 | 89.75 |
| 6 | GUIDE | 338839992 | 8.48 | 4451 | 0.068 | 0.118 | 0.078 | 0.125 | 251.528053 | 34.360854 | -33.76 | -2438.48 |
| 7 | GUIDE | 339219200 | 8.54 | 4447 | -0.033 | -0.106 | 0.099 | 0.159 | 251.203016 | 35.782041 | -1941.98 | 2403.54 |

2.4 Star Slots

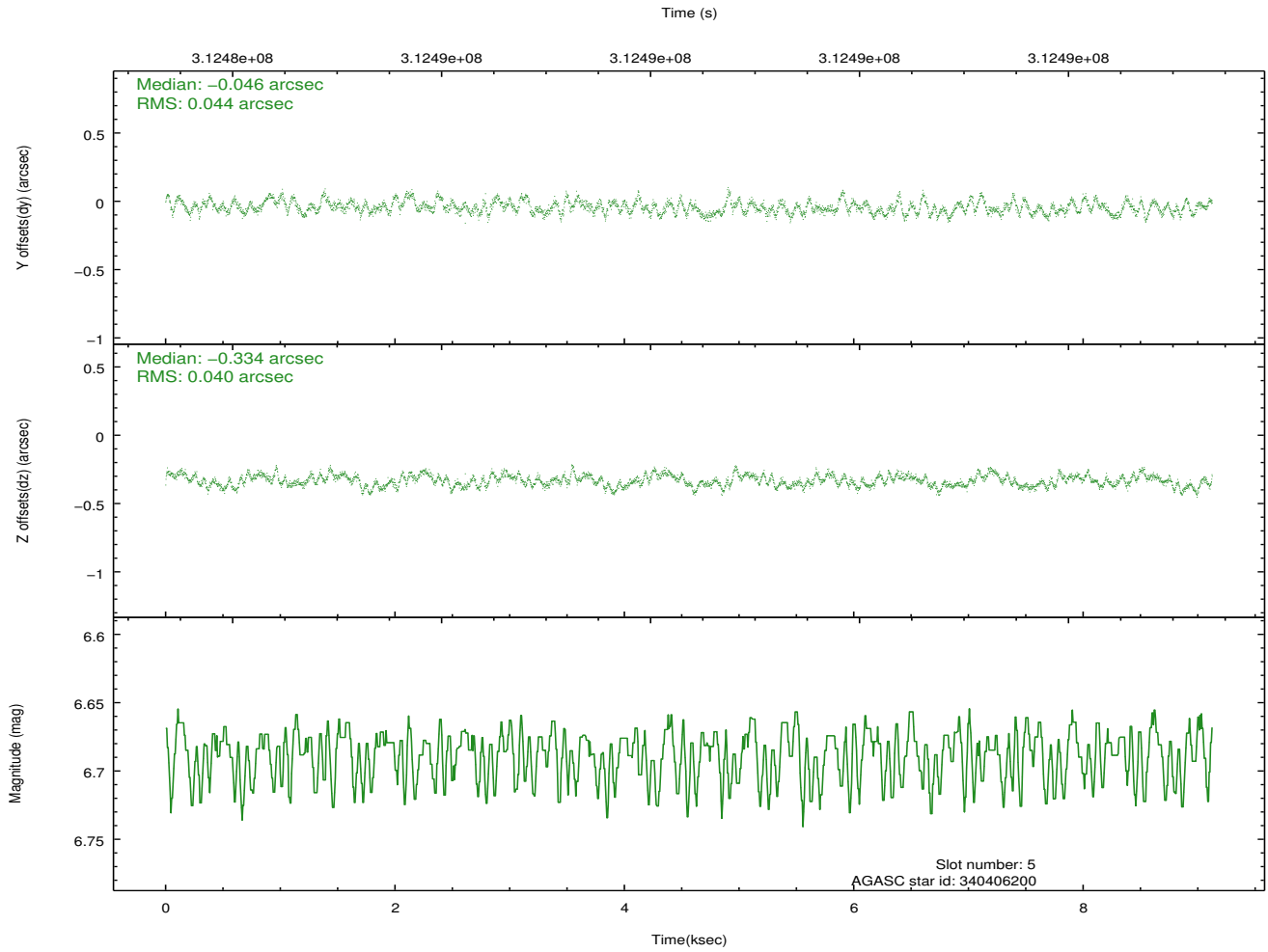
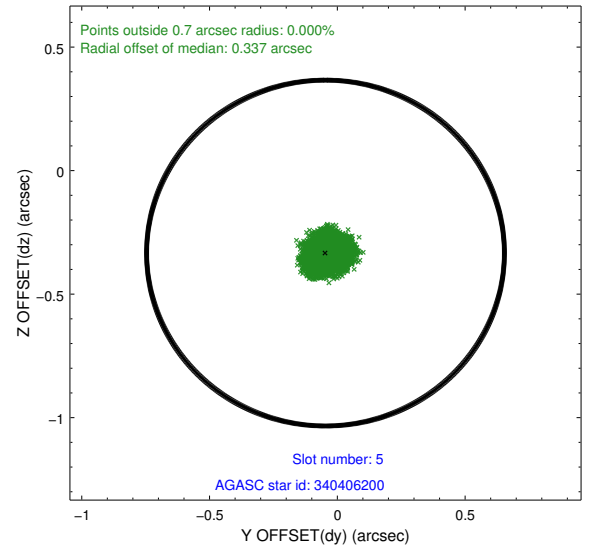
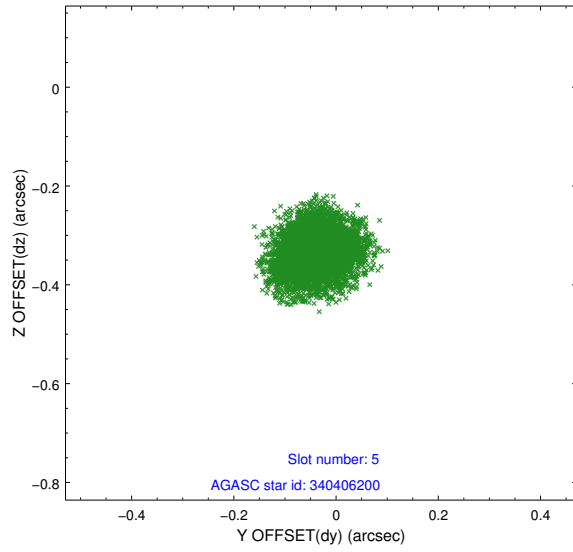
2.4.1 Slot 3



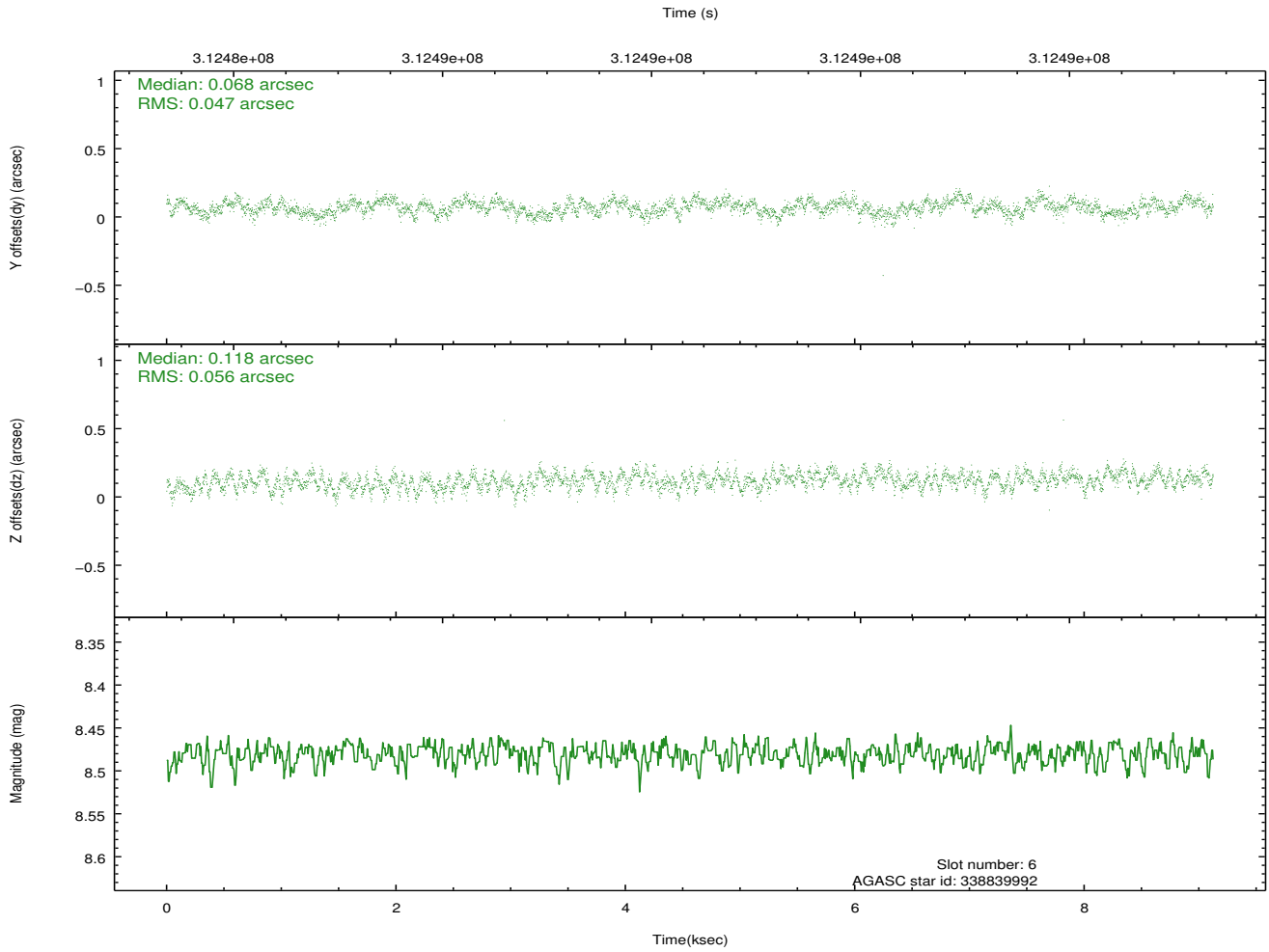
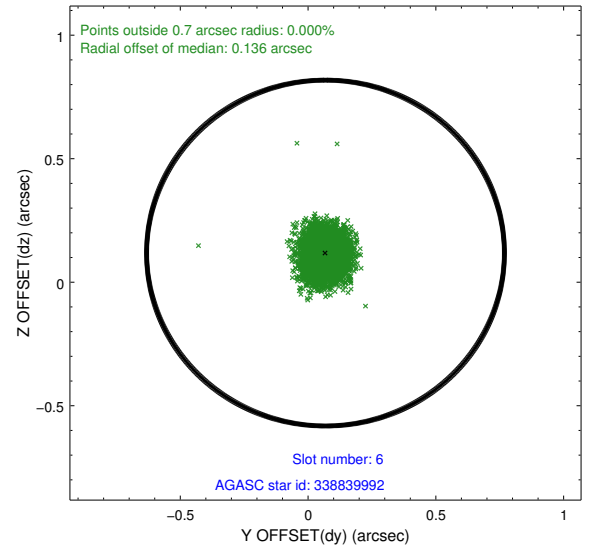
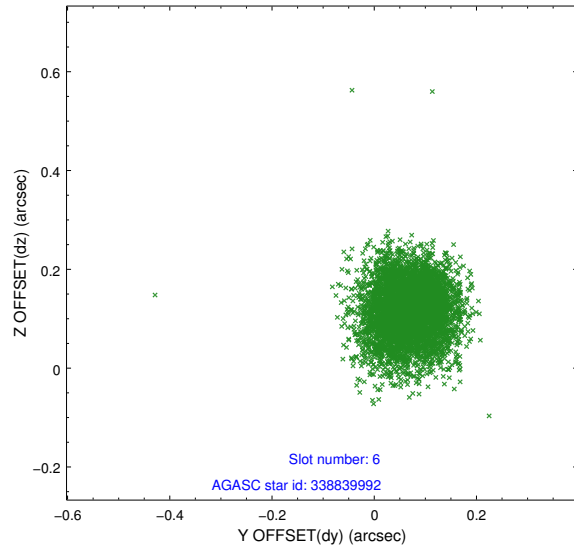
2.4.2 Slot 4



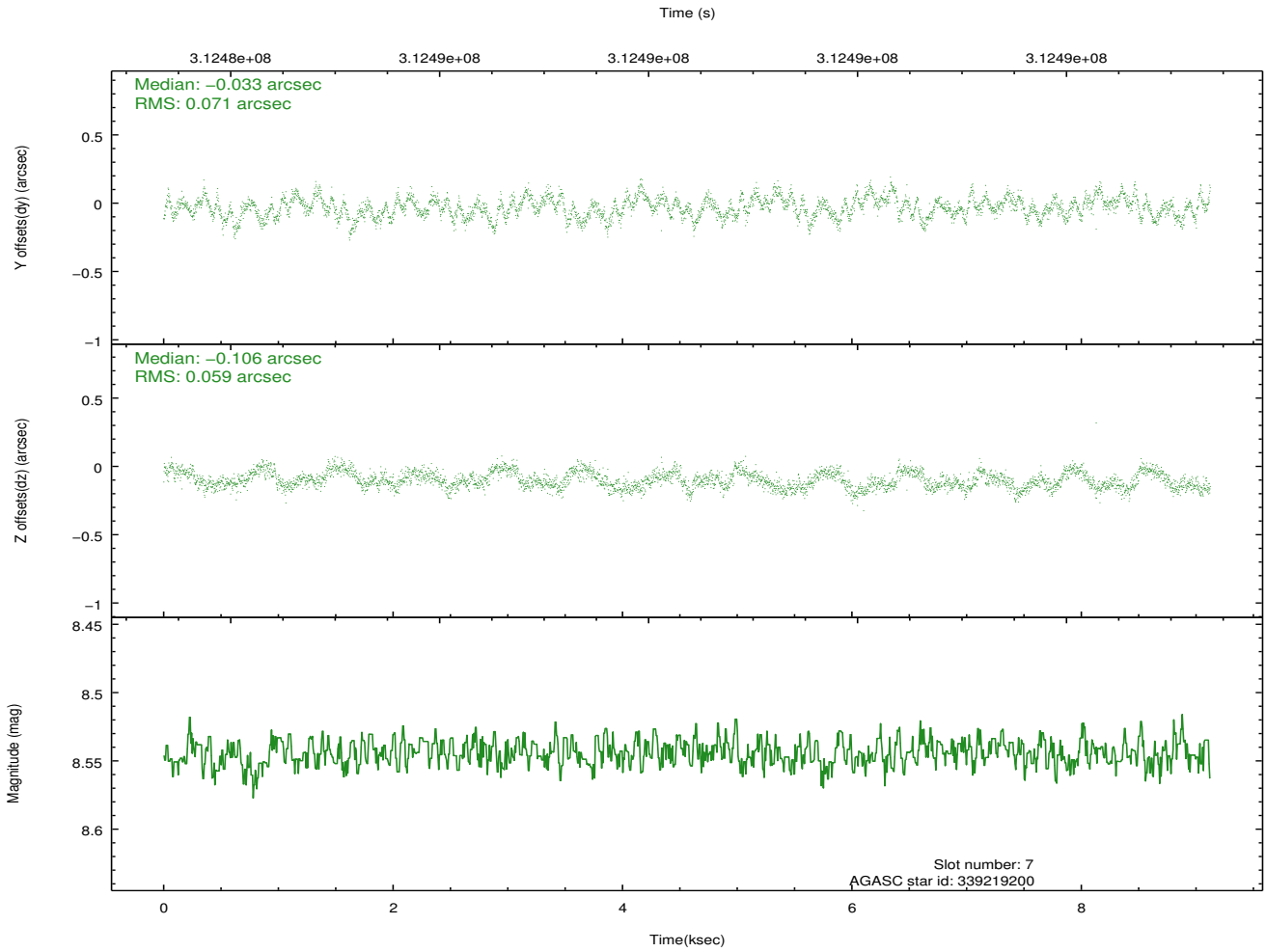
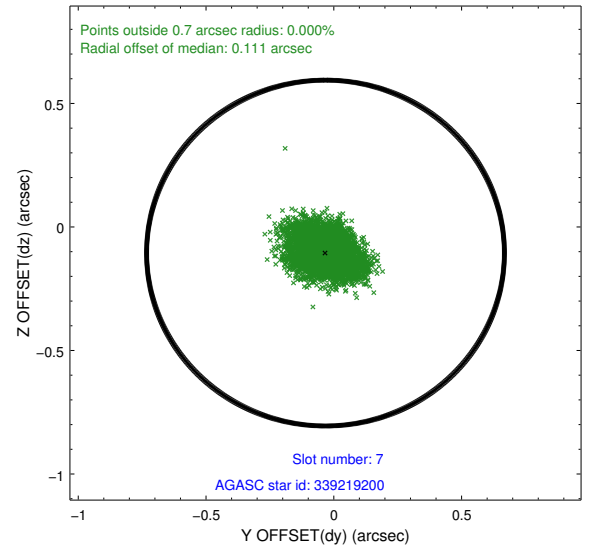
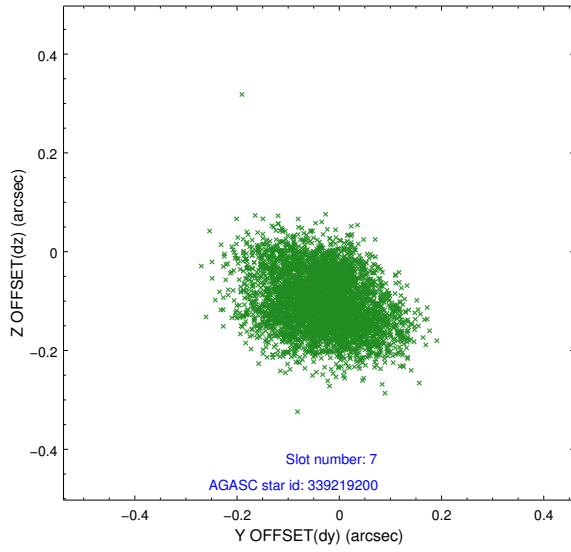
2.4.3 Slot 5



2.4.4 Slot 6

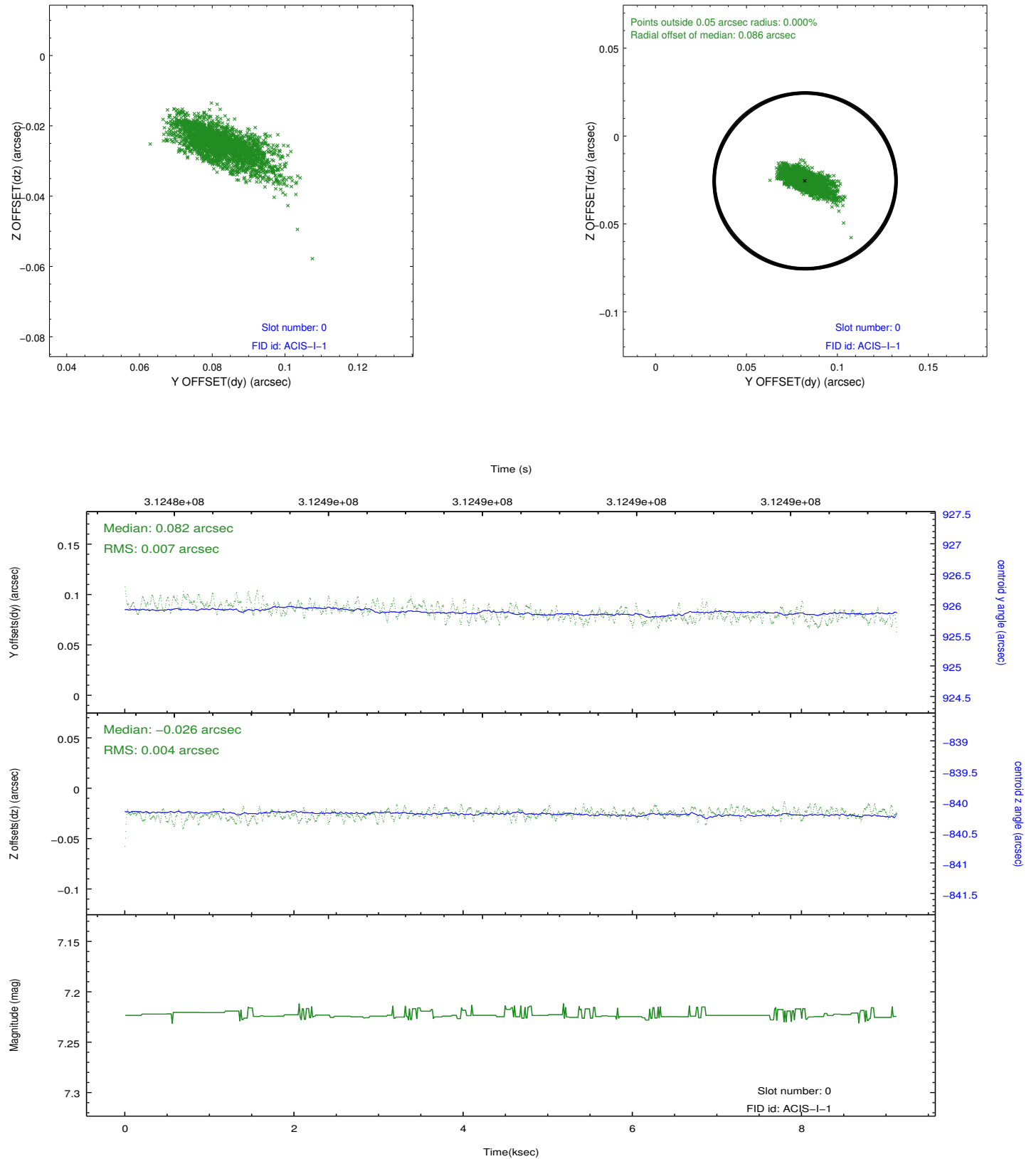


2.4.5 Slot 7

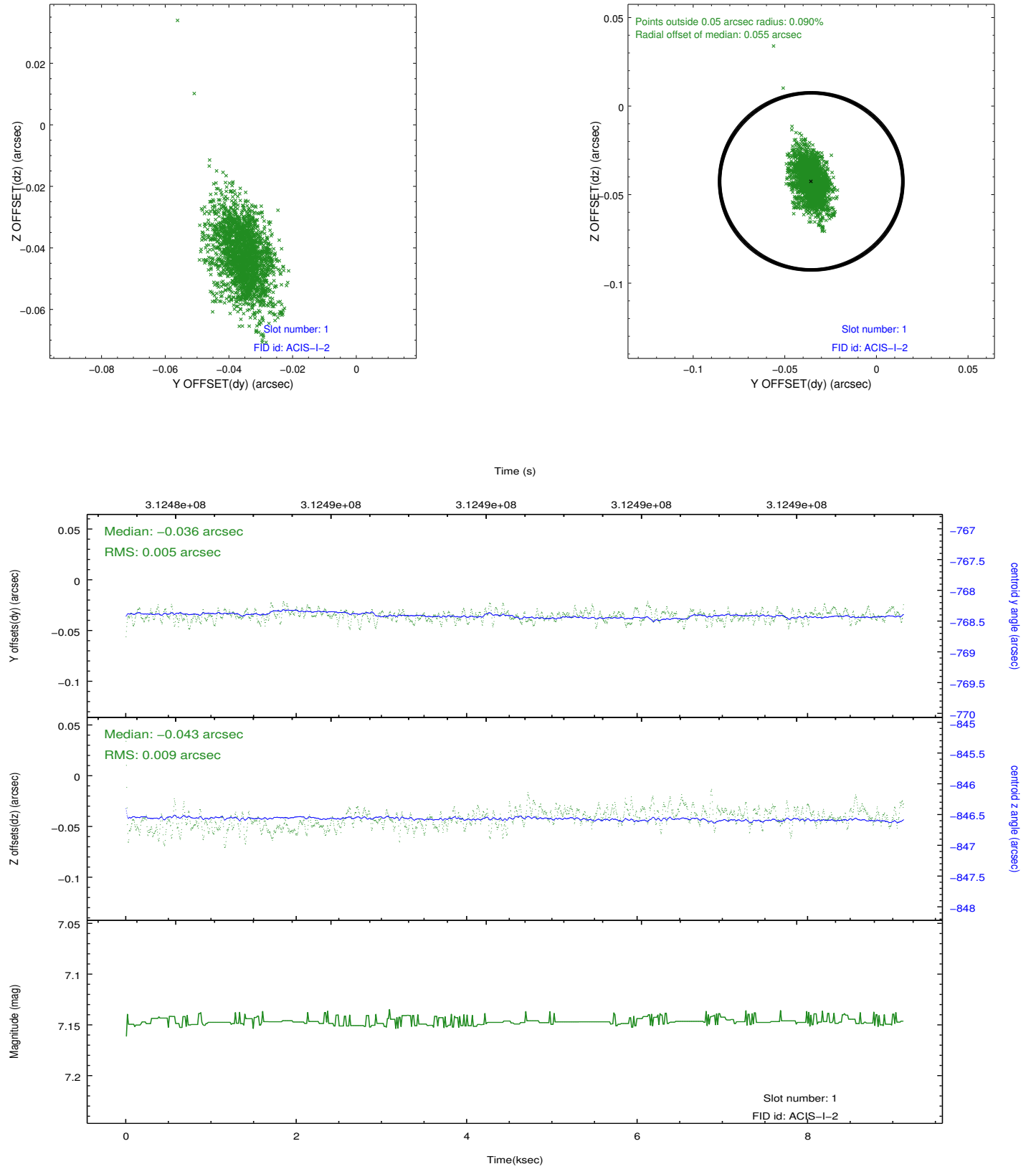


2.5 FID Slots

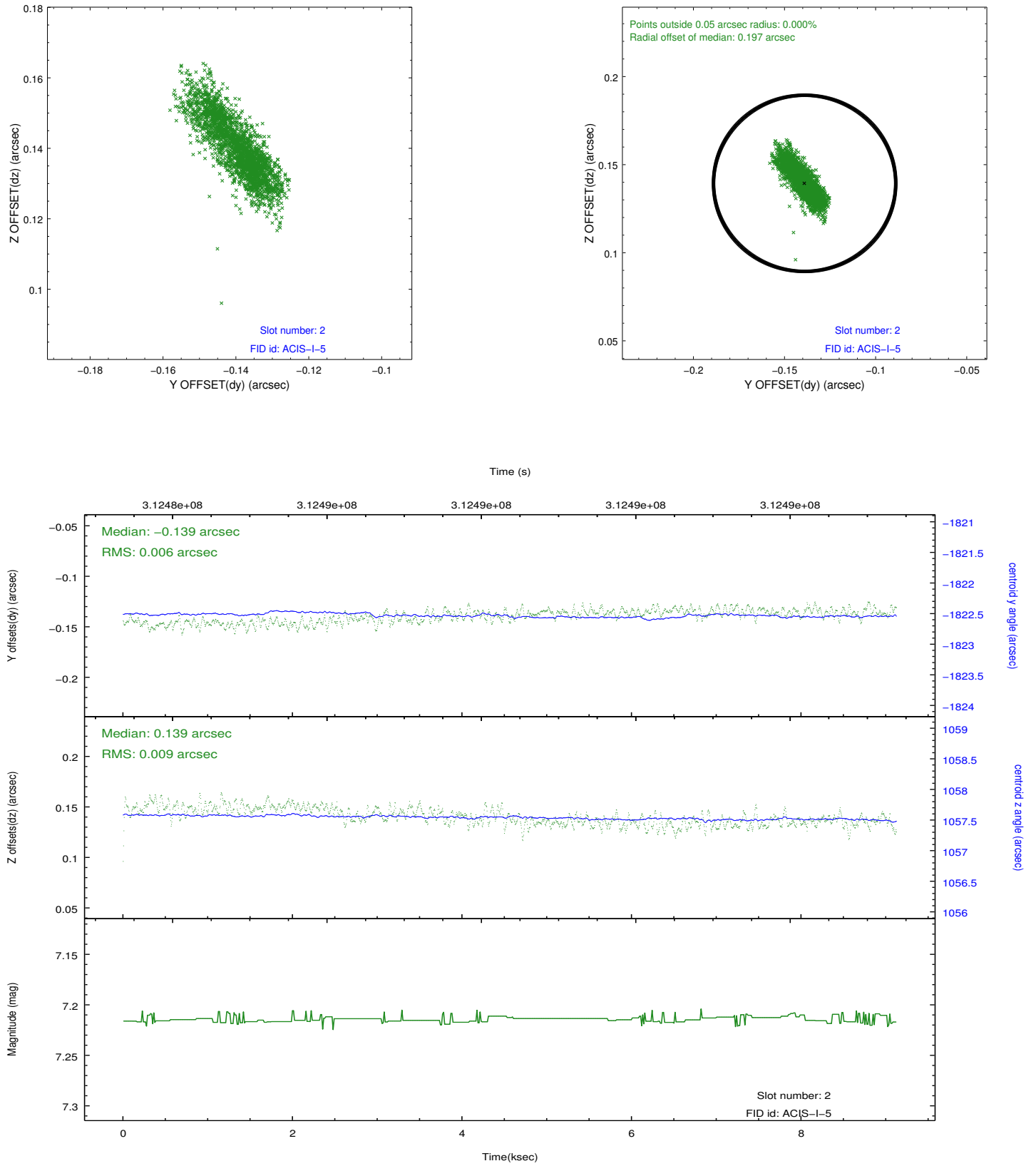
2.5.1 Slot 0



2.5.2 Slot 1



2.5.3 Slot 2



A Summary

A.1 Status

| | |
|----------------------------|------------|
| V&V Scientist | Jen Lauer |
| V&V Date (YYYY-MM-DD) | 2012.05.07 |
| V&V Edition | 1 |
| V&V Disposition and Status | OK |
| V&V Charge Time | 8.71405907 |

A.2 Comments