

# V&V Reference Report

## L2 ASCDS Version : 8.4.4

Observation 8357 - L2 Version 5  
Chandra X-Ray Center

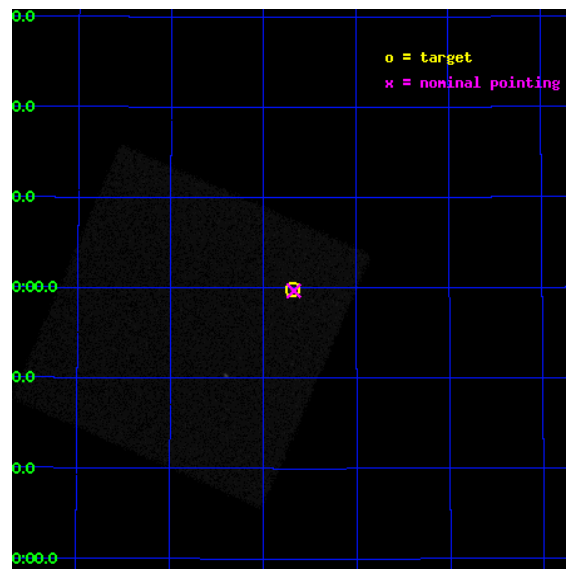
L2 Processing Date : Aug 11 2012

## Contents

<b>1</b>	<b>Front</b>	<b>2</b>
<b>2</b>	<b>OBI</b>	<b>3</b>
2.1	OBI . . . . .	3
2.1.1	Images . . . . .	3
2.1.2	Parameters . . . . .	4
2.1.3	Events . . . . .	4
2.2	Compared Parameters . . . . .	5
2.3	Aspect . . . . .	6
2.4	Star Slots . . . . .	9
2.4.1	Slot 3 . . . . .	9
2.4.2	Slot 4 . . . . .	10
2.4.3	Slot 5 . . . . .	11
2.4.4	Slot 6 . . . . .	12
2.4.5	Slot 7 . . . . .	13
2.5	FID Slots . . . . .	14
2.5.1	Slot 0 . . . . .	14
2.5.2	Slot 1 . . . . .	15
2.5.3	Slot 2 . . . . .	16
<b>A</b>	<b>Summary</b>	<b>17</b>
A.1	Status . . . . .	17
A.2	Comments . . . . .	17

# 1 Front

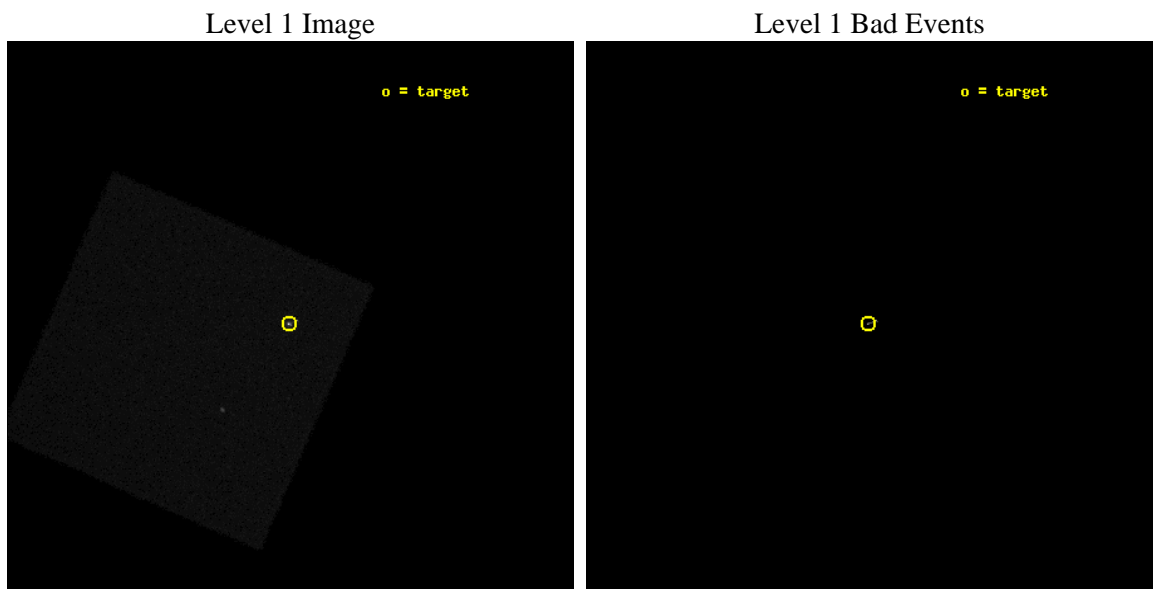
seq_num	290736	Sequence number
obs_id	8357	Observation id
title	Improving the De-Gap Corrections for the HRC-I	Proposal title
observer	Dr. CXC Calibration	Principal investigator
object	Capella	Source name
ra_targ	79.1725	Observer's specified target RA [deg]
dec_targ	45.998	Observer's specified target Dec [deg]
ra_nom	79.168093753113	Nominal RA [deg]
dec_nom	45.994733155626	Nominal Dec [deg]
roll_nom	248.55314652068	Nominal Roll [deg]
revision	5	Processing version of data
ontime	5187.7814959884	[s]
livetime	5132.0024658833	Ontime multiplied by DTCOR
l2events	382878	Number of level 2 events



## 2 OBI

### 2.1 OBI

#### 2.1.1 Images



### 2.1.2 Parameters

obi_num	0	Obi number	sched_exp_time	5000.000000	[s] Scheduled observation exposure time
ascdsver	8.4.5	Processing system revision	ontime	5187.7814959884	[s]
caldbver	4.5.1.1	&#160	l1events	548699	Number of level 1 events
date	2012-08-11T17:57:02	Date and time of file creation			
revision	5	Processing version of data			

### 2.1.3 Events

#### Level 1 Events

	<b>segment 0</b>
level 1 events	548699
rejected events	31460
rejected %	5%

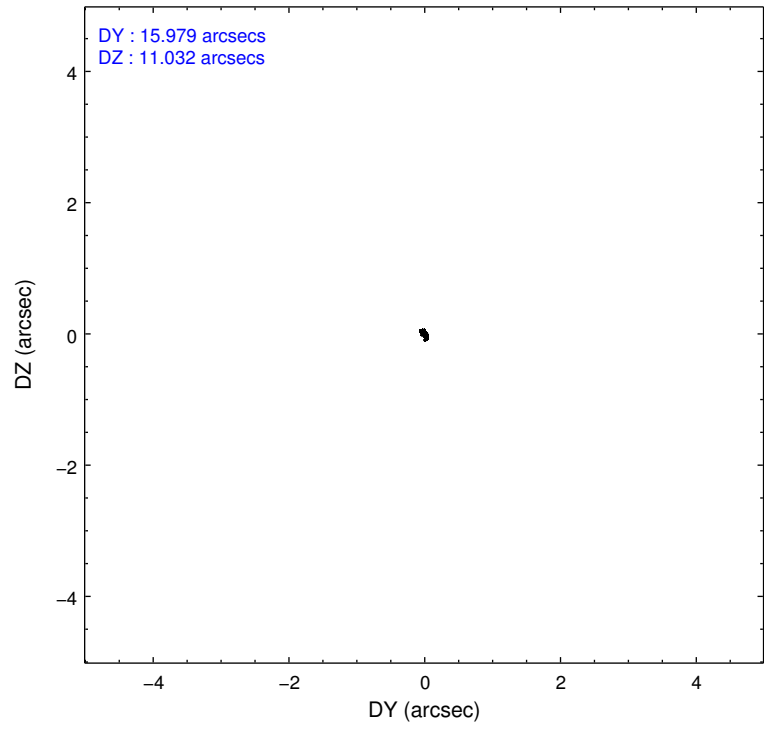
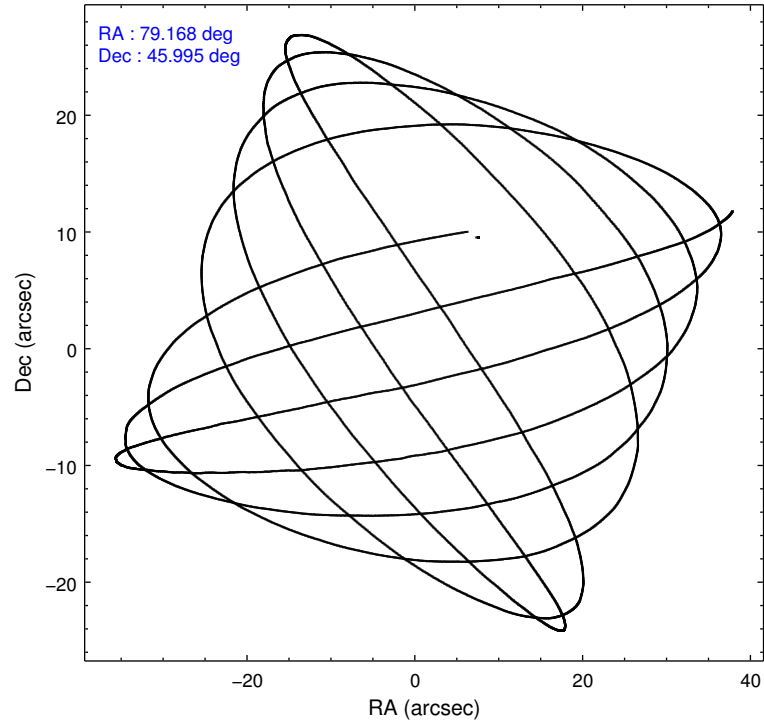


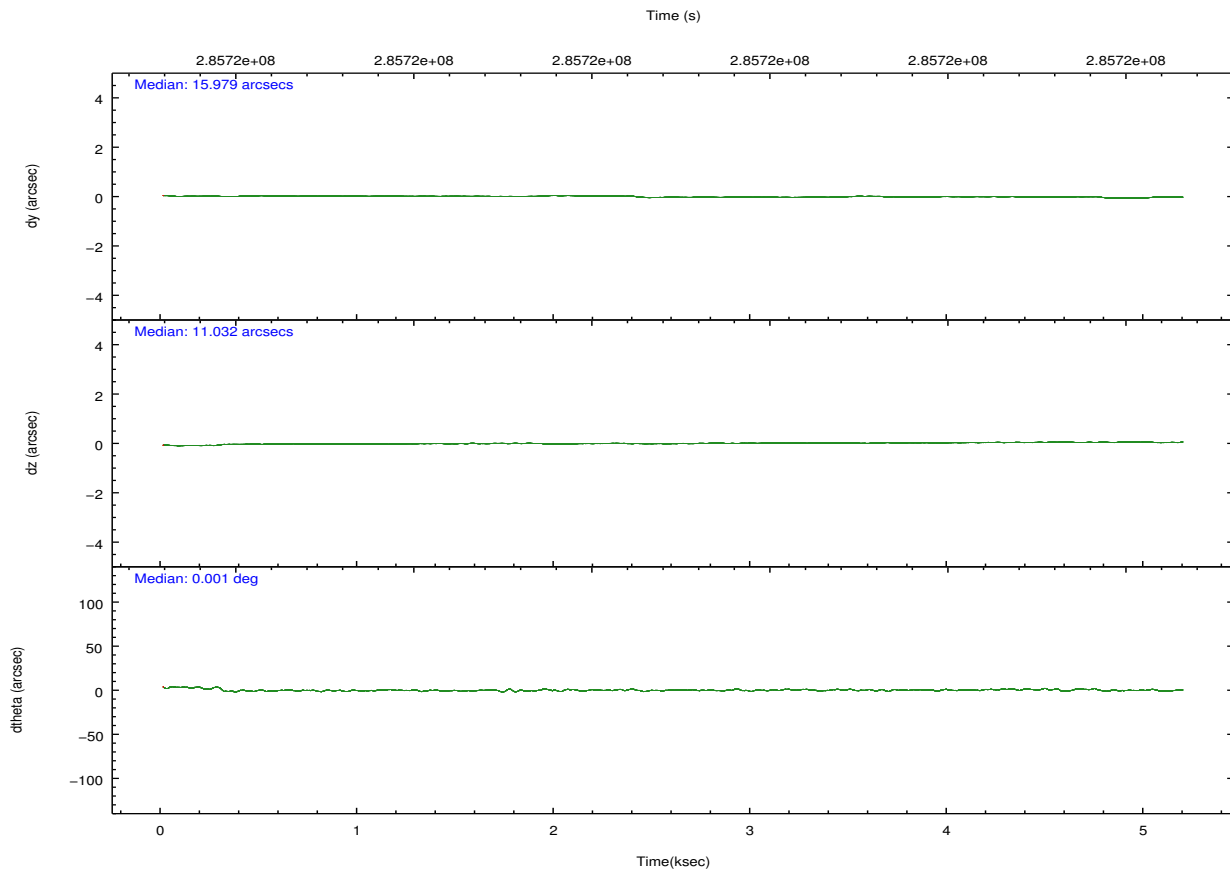
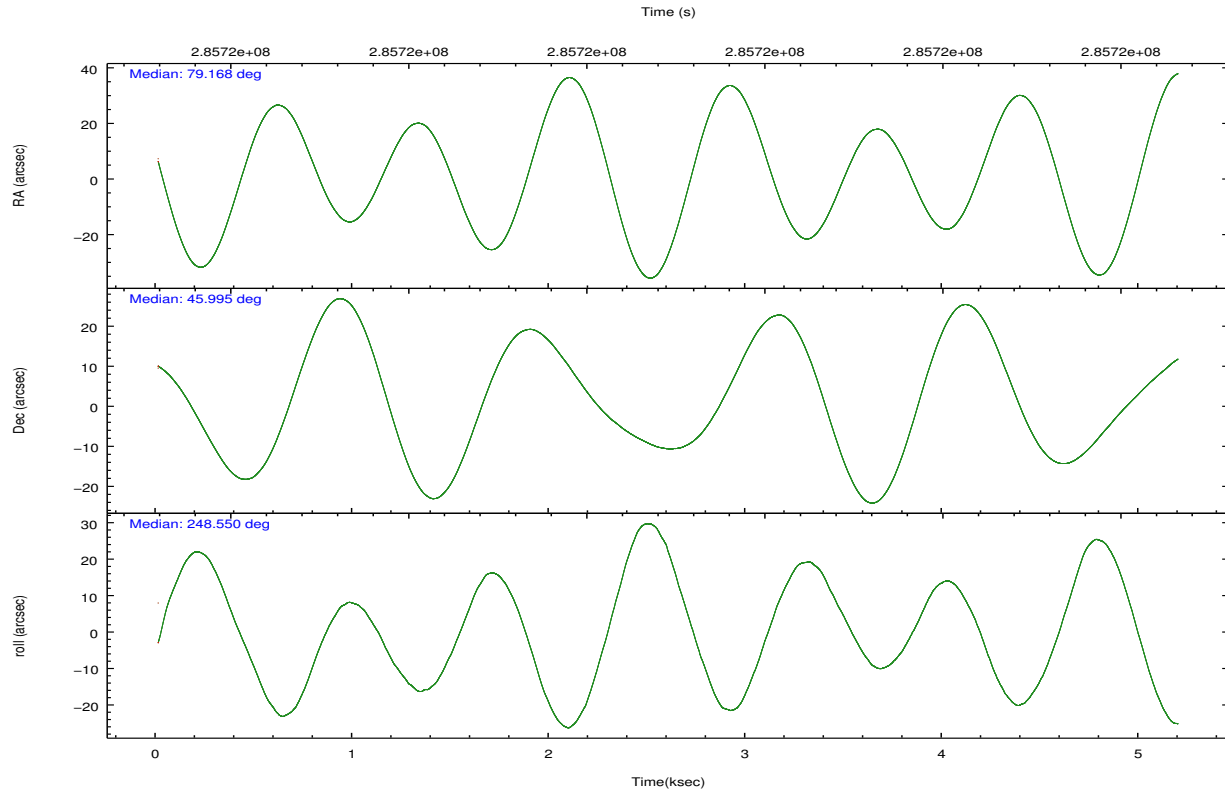
## 2.2 Compared Parameters

Parameter	Planned	Actual
Instrument	HRC	HRC
Detector	HRC-I	HRC-I
Grating	NONE	NONE
Data mode	OBSERVING	OBSERVING
Observation mode	POINTING	POINTING
[deg] Pointing RA	79.161628	79.16809375311257
[deg] Pointing Dec	46.021716	45.99473315562594
[deg] Pointing Roll	248.653288	248.5531465206831
[mm] SIM focus pos	-1.040293	-1.038866356238299
[mm] SIM defocus	0	0.001426264420575141
[mm] SIM translation stage pos	90.985494	90.98049918694861
[mm] SIM translation stage offset	36	36.00498970465296
[s] Observation start time (MET)	285715053.184000	285714677.94899
Observation start date	2007-01-20T21:16:28	2007-01-20T21:11:17
[s] Observation end time (MET)	285720053.184000	285720187.32425
Observation end date	2007-01-20T22:39:48	2007-01-20T22:43:07

Parameter	Planned	Actual
Obspar format version number	7	7
Obspar file type	PREDICTED	ACTUAL
Obspar update status	NONE	UPDATED

## 2.3 Aspect



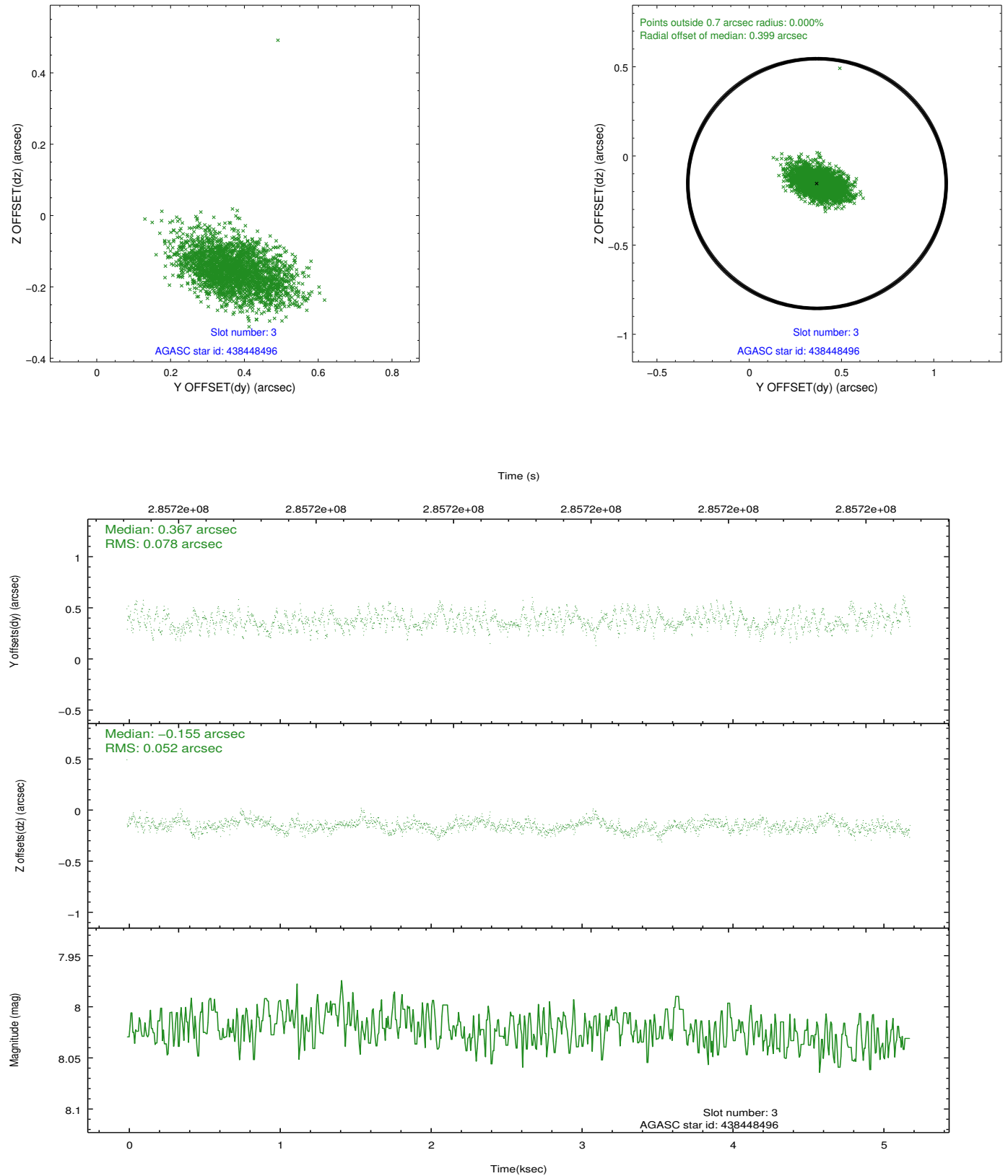


### Slot Statistics

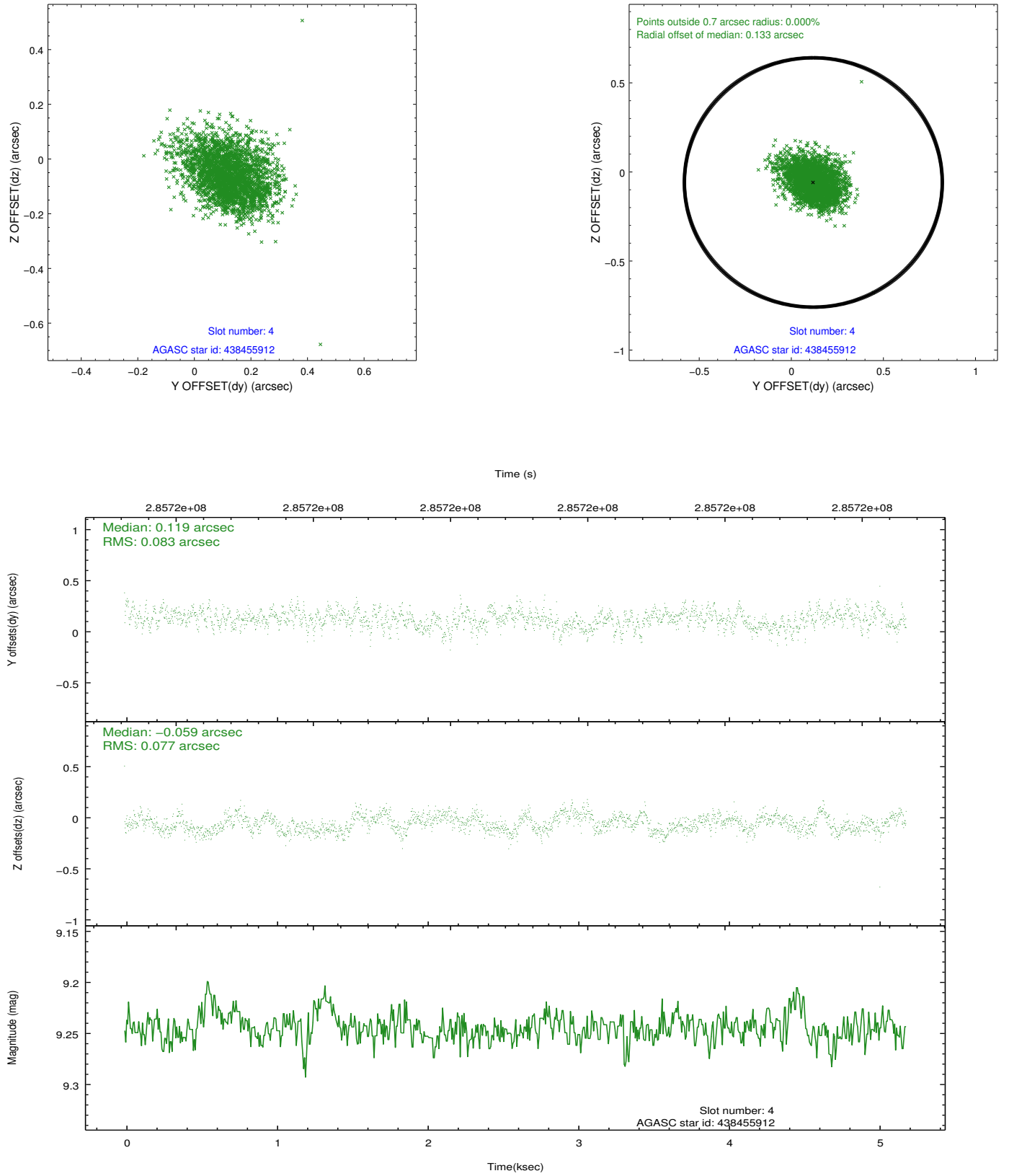
slot	status	id	mag	n_pts	med_dy	med_dz	dr1	dr2	ra	dec	mean_y	mean_z
0	FID	HRC-I-1	6.96	1266	-0.010	-0.354	0.008	0.016	0.000000	0.000000	-770.32	-563.18
1	FID	HRC-I-2	7.10	1266	-0.208	-0.074	0.009	0.018	0.000000	0.000000	839.41	-560.77
2	FID	HRC-I-4	6.90	1265	0.332	0.337	0.007	0.014	0.000000	0.000000	1271.07	1743.43
3	GUIDE	438448496	8.02	2532	0.367	-0.155	0.097	0.164	77.967952	45.656964	2295.69	-2327.09
4	GUIDE	438455912	9.24	2532	0.119	-0.059	0.120	0.196	78.251946	45.690923	1930.56	-1702.14
5	GUIDE	438460832	8.98	2528	0.093	0.077	0.109	0.178	78.414614	45.554782	2243.68	-1144.95
6	GUIDE	440140240	9.99	2522	-0.292	0.089	0.143	0.235	78.889349	46.726437	-2119.06	-1549.66
7	GUIDE	440150048	7.15	2530	-0.293	0.048	0.076	0.120	79.112838	46.416060	-1279.62	-629.57

## 2.4 Star Slots

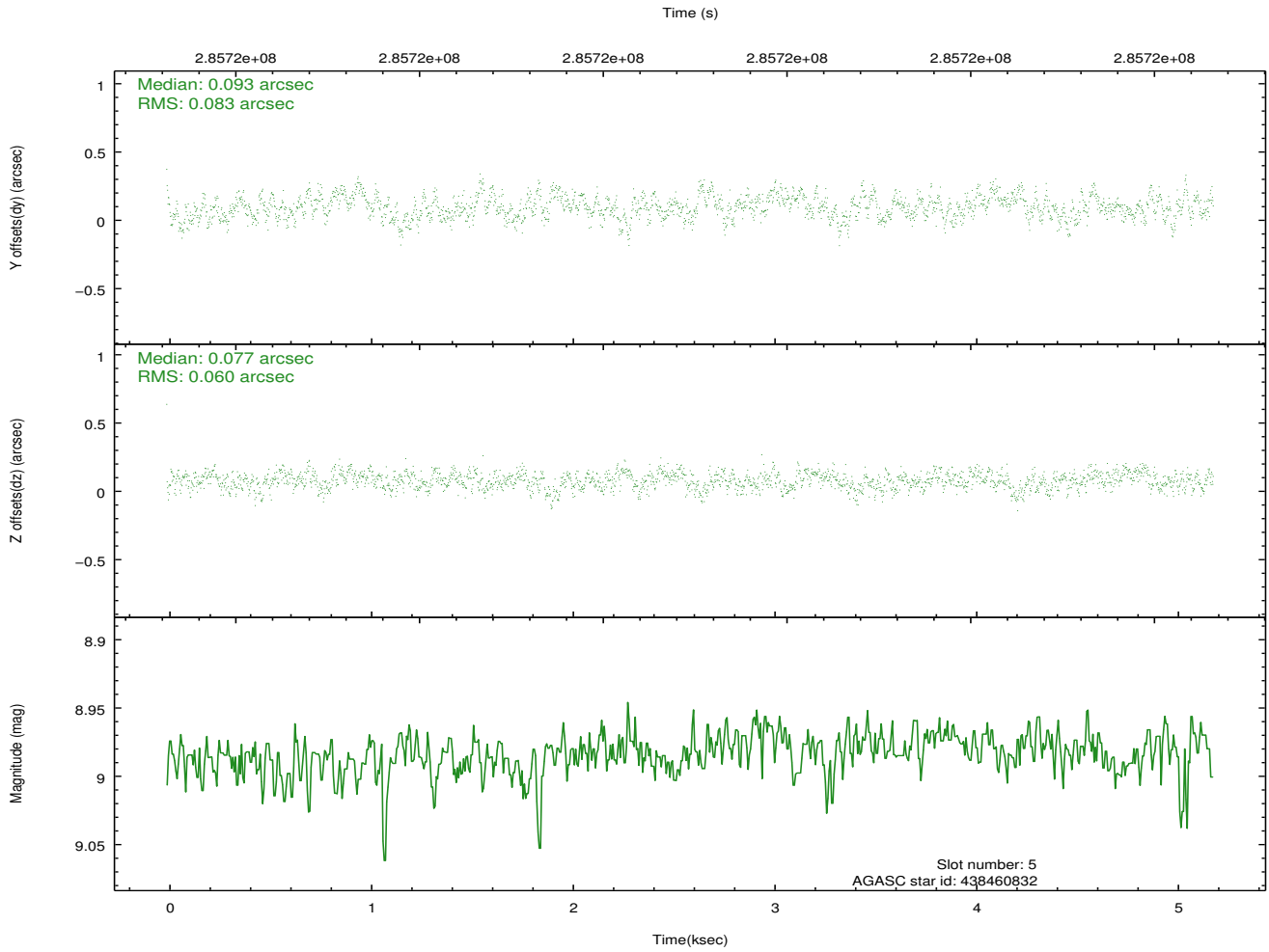
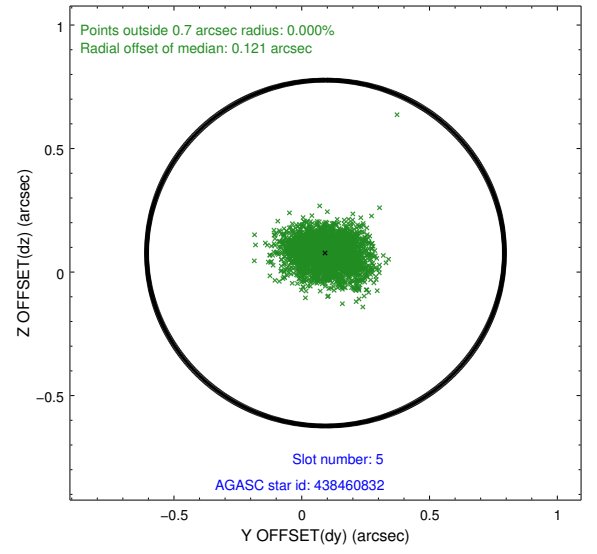
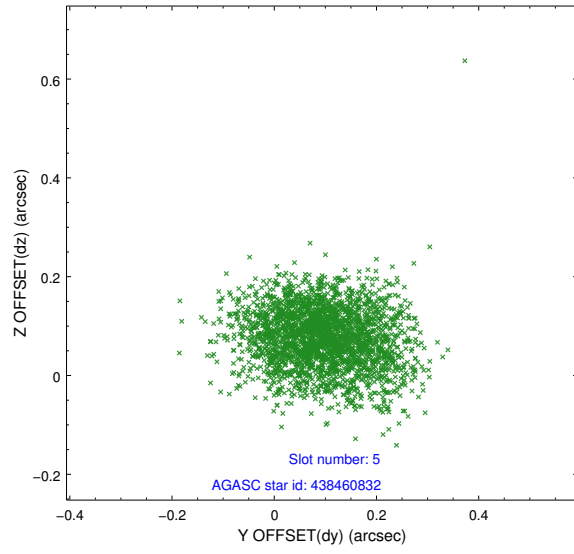
### 2.4.1 Slot 3



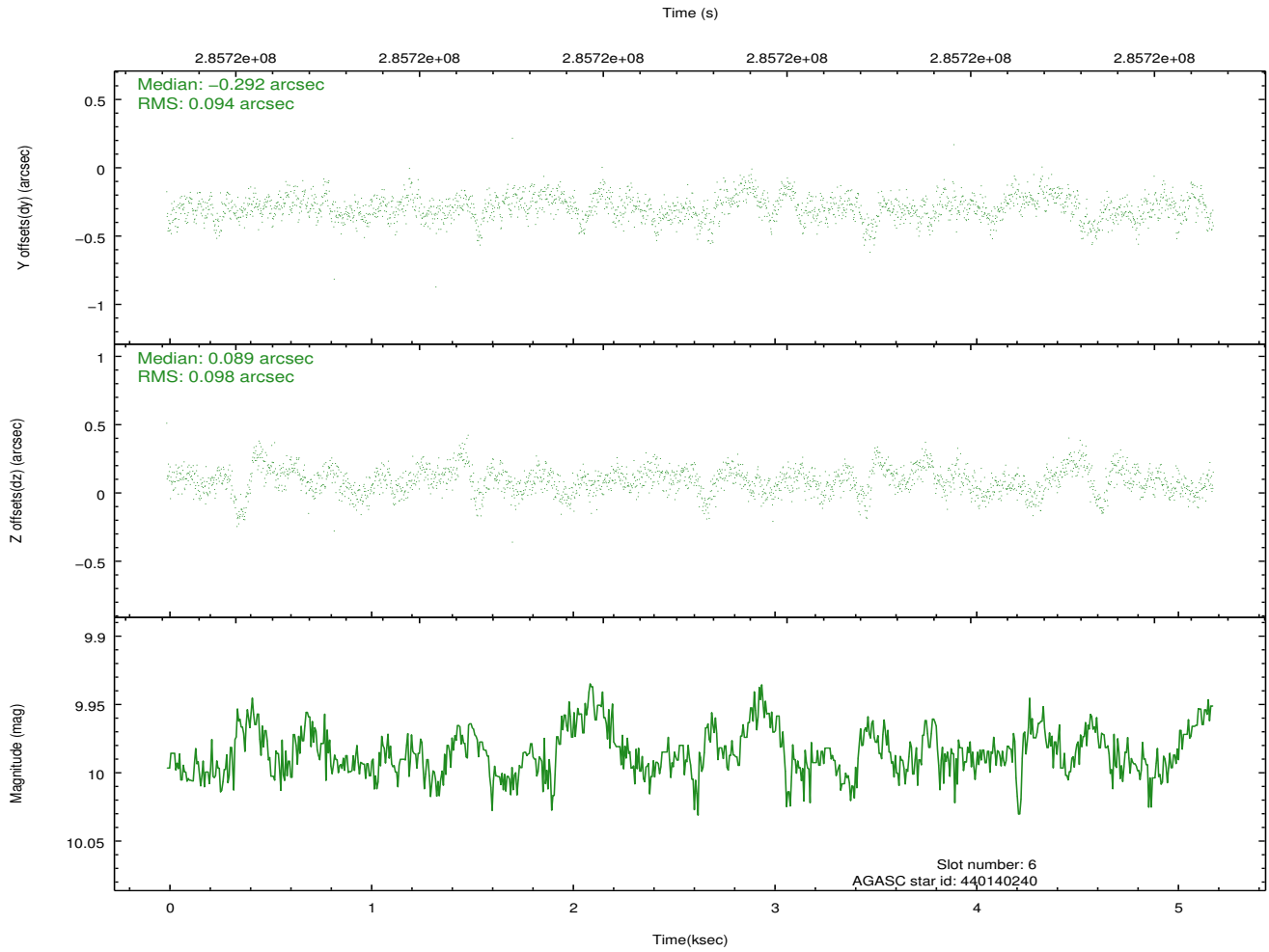
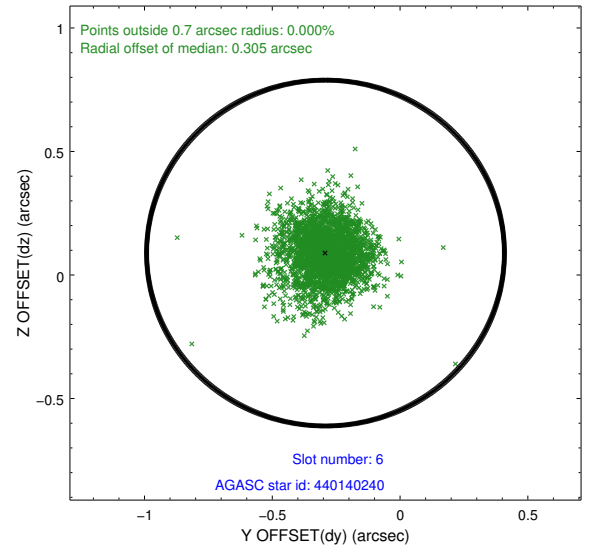
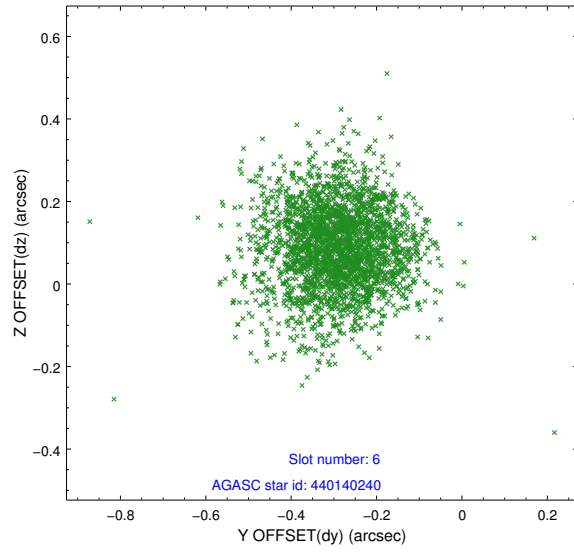
## 2.4.2 Slot 4



### 2.4.3 Slot 5

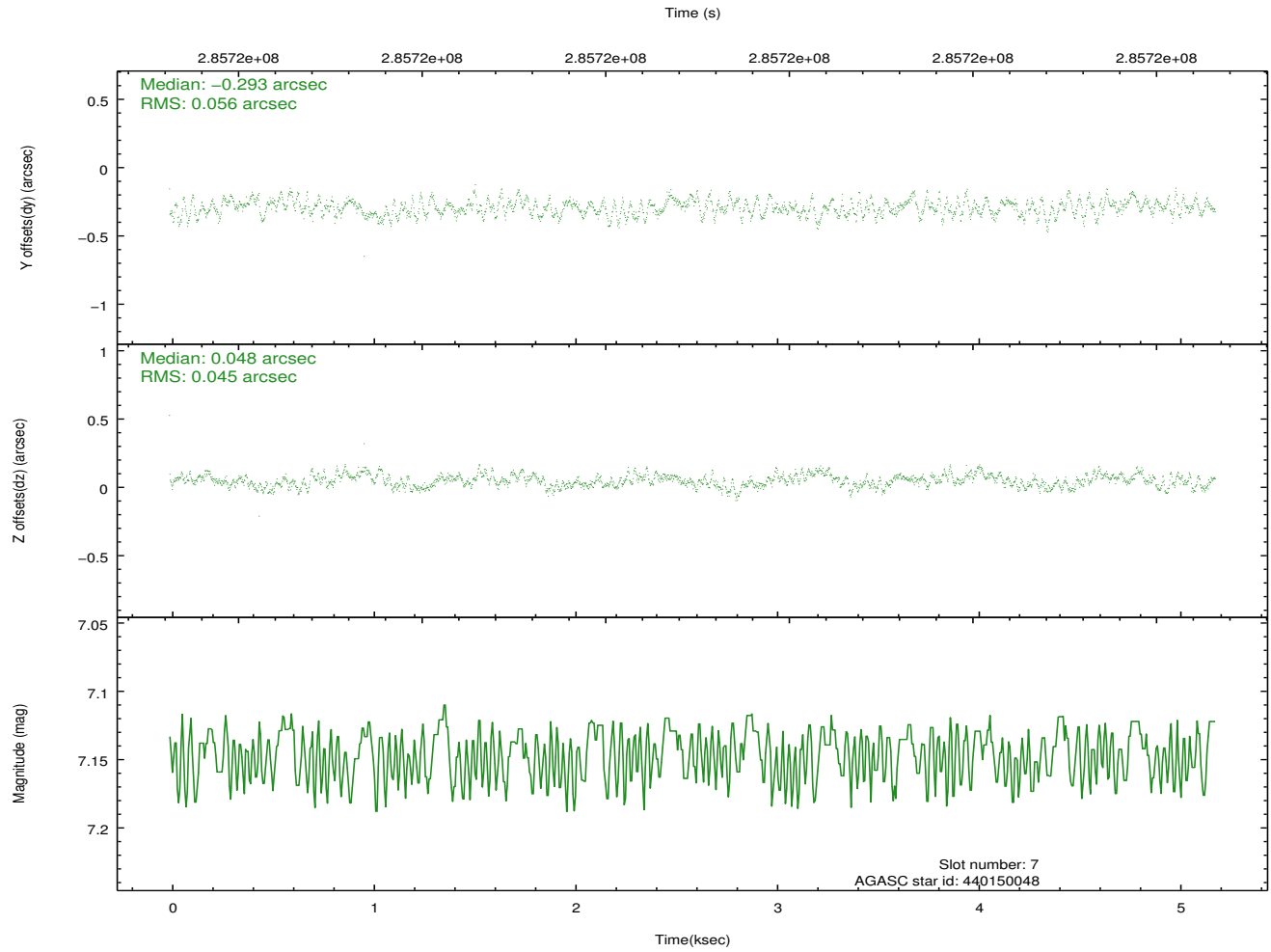
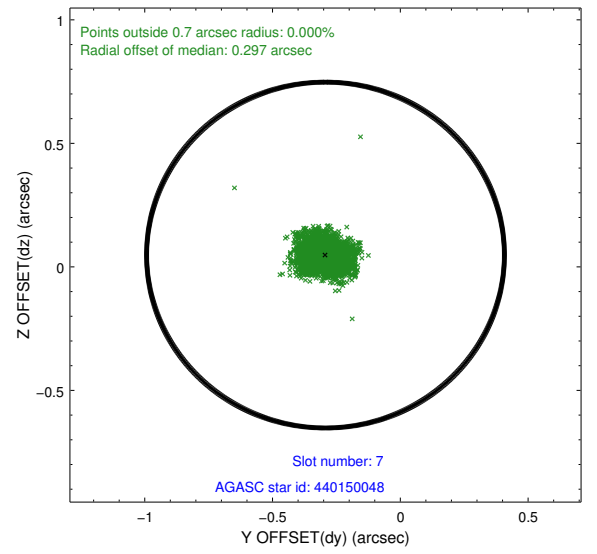
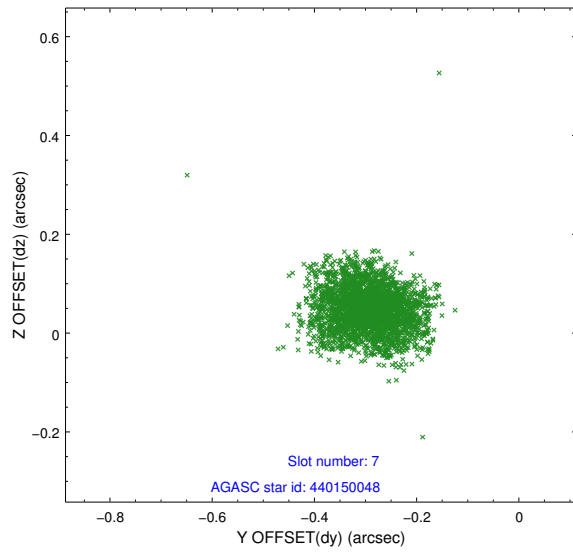


## 2.4.4 Slot 6



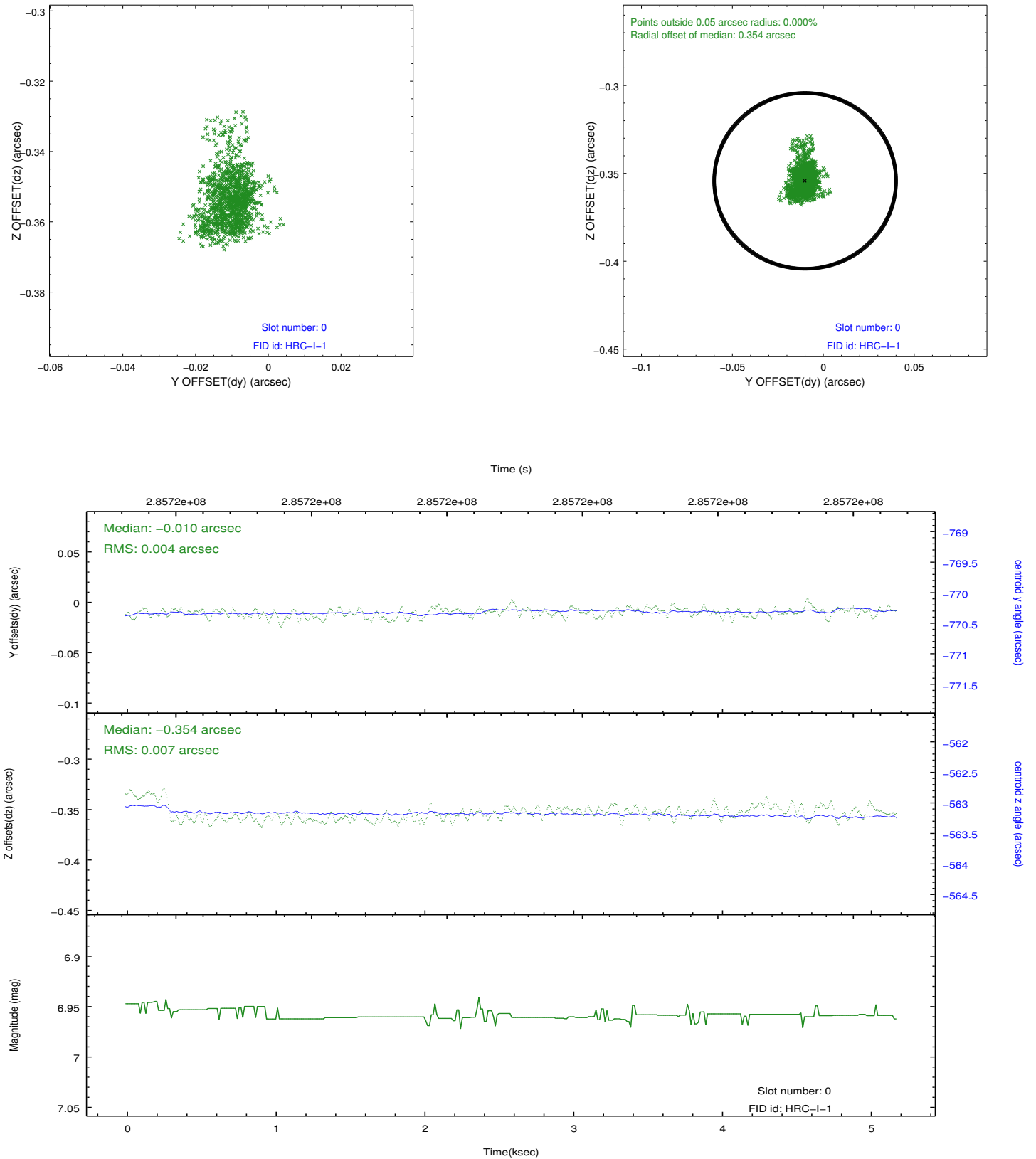


## 2.4.5 Slot 7

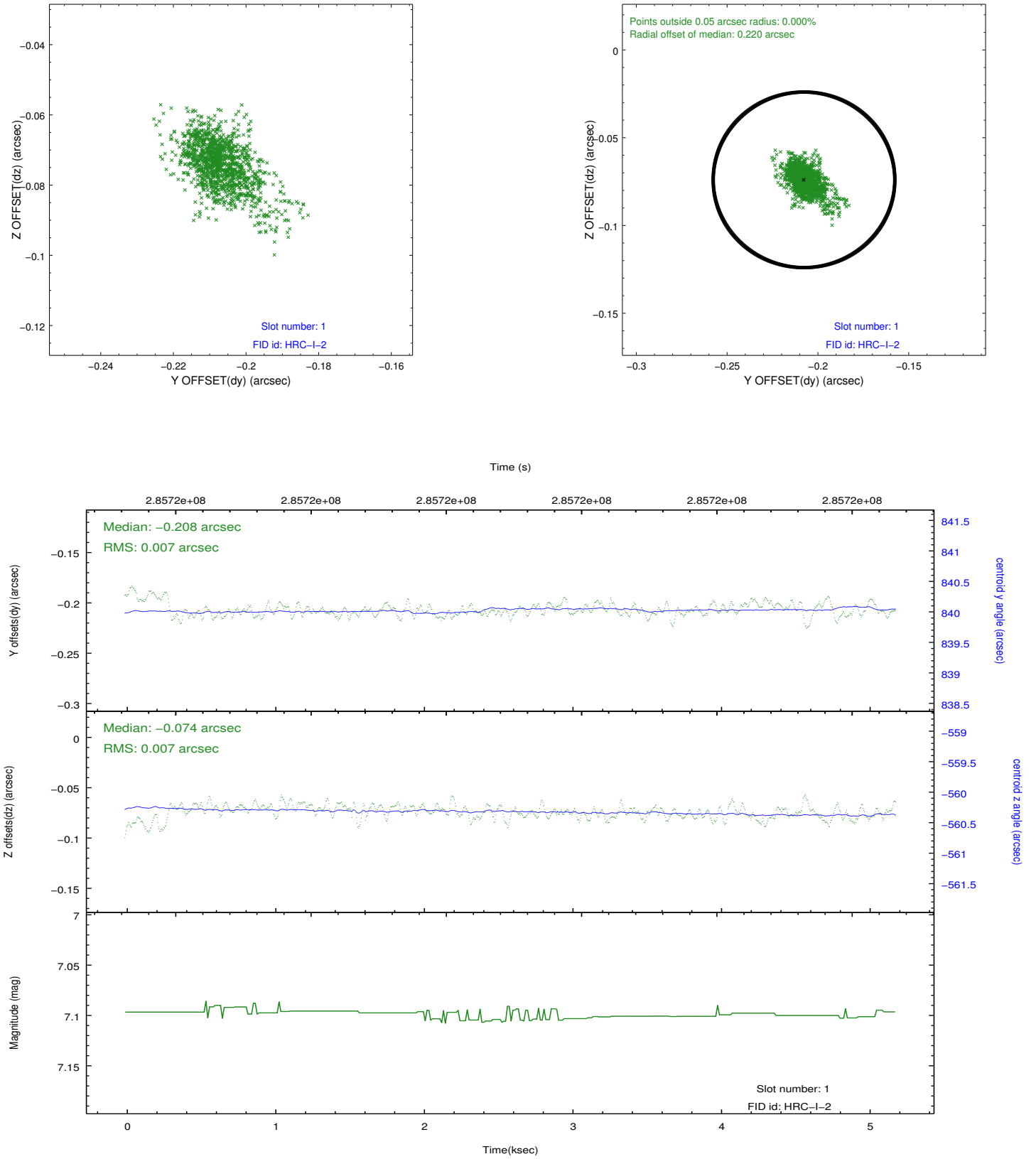


## 2.5 FID Slots

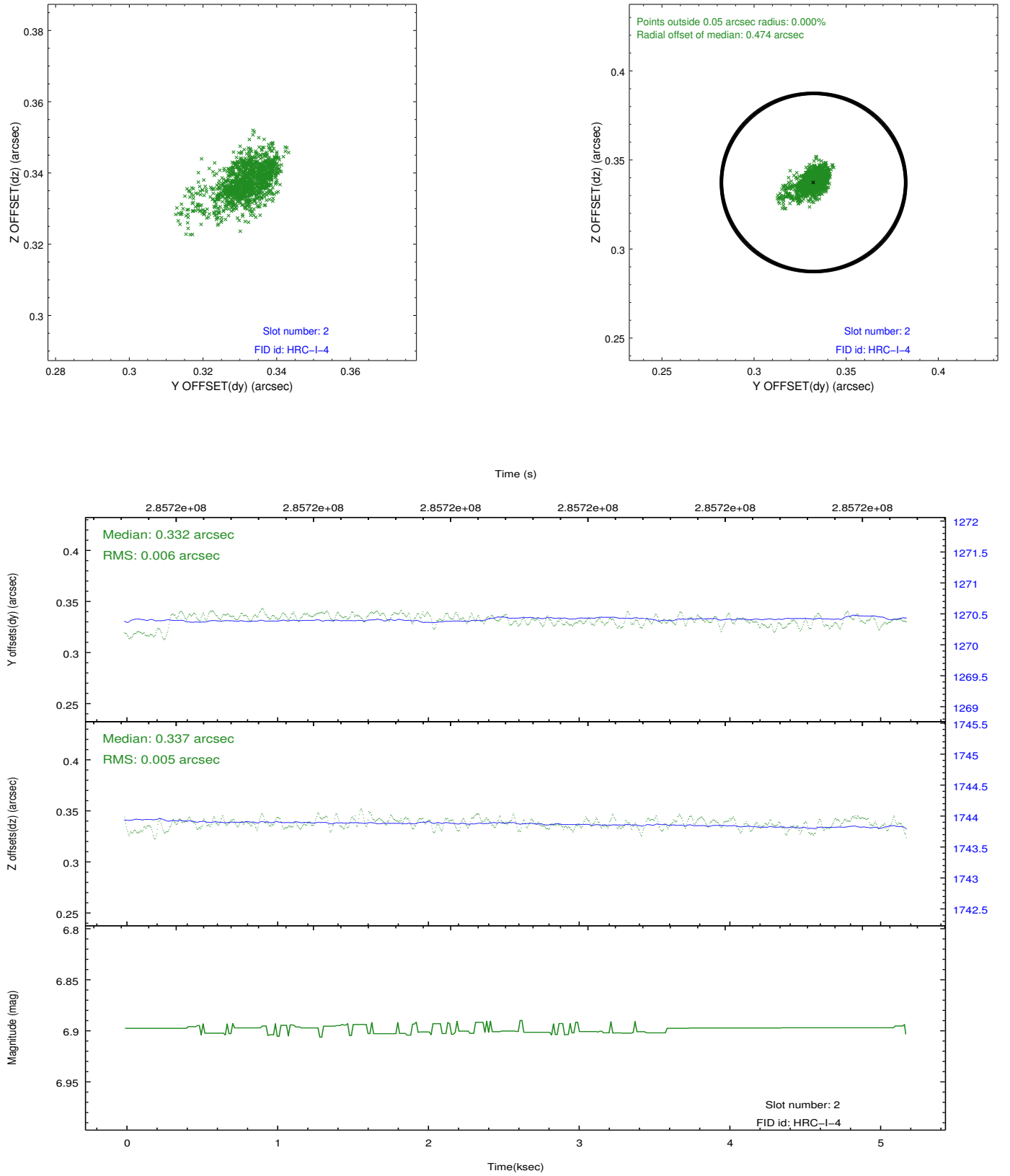
### 2.5.1 Slot 0



## 2.5.2 Slot 1



### 2.5.3 Slot 2



## A Summary

### A.1 Status

V&V Scientist	Jen Lauer
V&V Date (YYYY-MM-DD)	2012.08.14
V&V Edition	1
V&V Disposition and Status	OK
V&V Charge Time	5.18778149

### A.2 Comments

Unusually high offsets in the fid lights are due to the position of the target and the aimpoint, and are expected.