

V&V Reference Report

L2 ASCDS Version : 8.4.4

Observation 7837 - L2 Version 2
Chandra X-Ray Center

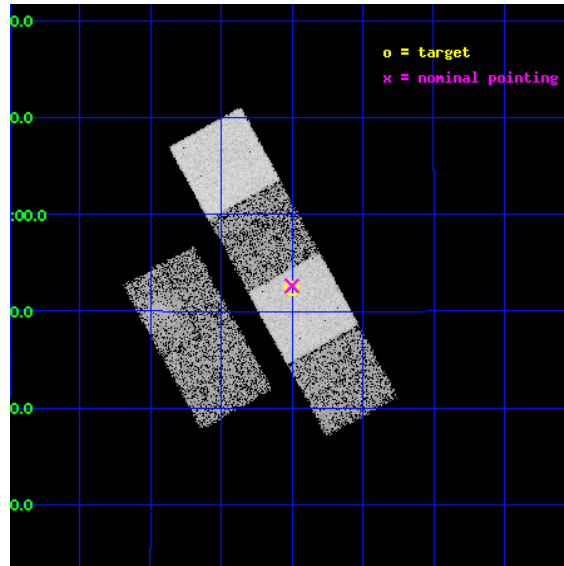
L2 Processing Date : May 4 2012

Contents

1	Front	2
2	OBI	3
2.1	OBI	3
2.1.1	Images	3
2.1.2	Bias	3
2.1.3	Parameters	4
2.1.4	Events	4
2.2	Compared Parameters	5
2.3	Aspect	6
2.4	Star Slots	9
2.4.1	Slot 3	9
2.4.2	Slot 4	10
2.4.3	Slot 5	11
2.4.4	Slot 6	12
2.4.5	Slot 7	13
2.5	FID Slots	14
2.5.1	Slot 0	14
2.5.2	Slot 1	15
2.5.3	Slot 2	16
A	Summary	17
A.1	Status	17
A.2	Comments	17

1 Front

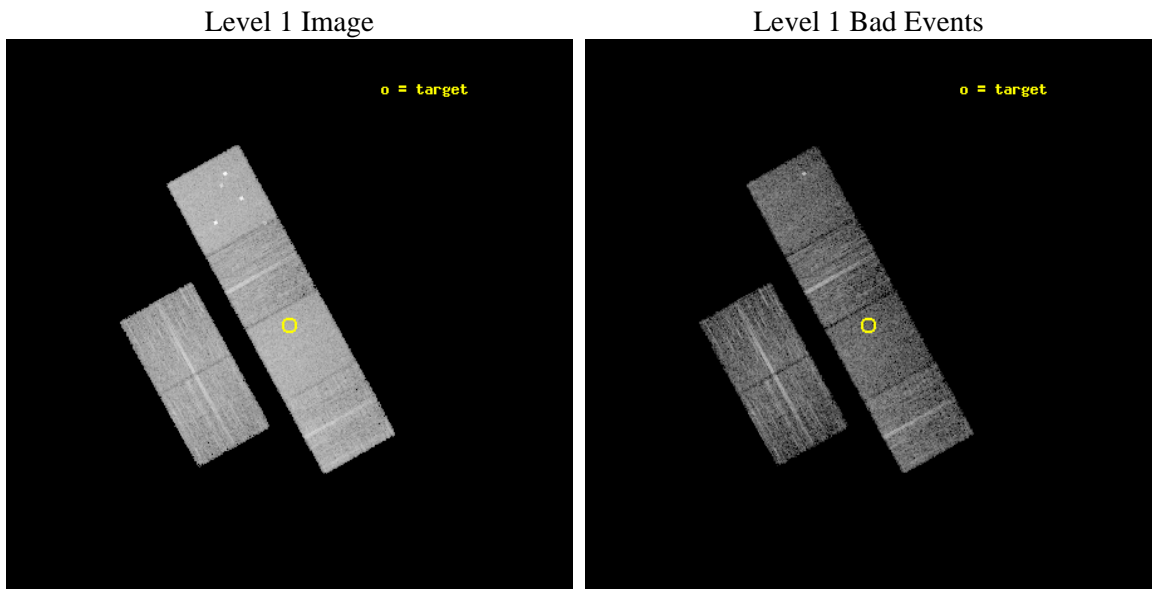
seq_num	701501	Sequence number
obs_id	7837	Observation id
title	Demographics of black holes in the local Universe.	Proposal title
observer	Prof. Smita Mathur	Principal investigator
object	NGC 4411	Source name
dtcycle	0	
cycle	P	events from which exps? Prim/Second/Both
ra_targ	186.625417	Observer's specified target RA [deg]
dec_targ	8.872222	Observer's specified target Dec [deg]
ra_nom	186.62525391627	Nominal RA [deg]
dec_nom	8.8770862247971	Nominal Dec [deg]
roll_nom	61.156647914751	Nominal Roll [deg]
revision	2	Processing version of data
ontime	5129.5999809504	Sum of GTIs [s]
livetime	5064.6458973173	Livetime [s]
ontime2	5129.5999809504	Sum of GTIs [s]
ontime3	5129.5999809504	Sum of GTIs [s]
ontime5	5129.5999809504	Sum of GTIs [s]
ontime6	5129.5999809504	Sum of GTIs [s]
ontime7	5129.5999809504	Sum of GTIs [s]
ontime8	5129.5999809504	Sum of GTIs [s]
l2events	82745	Number of level 2 events



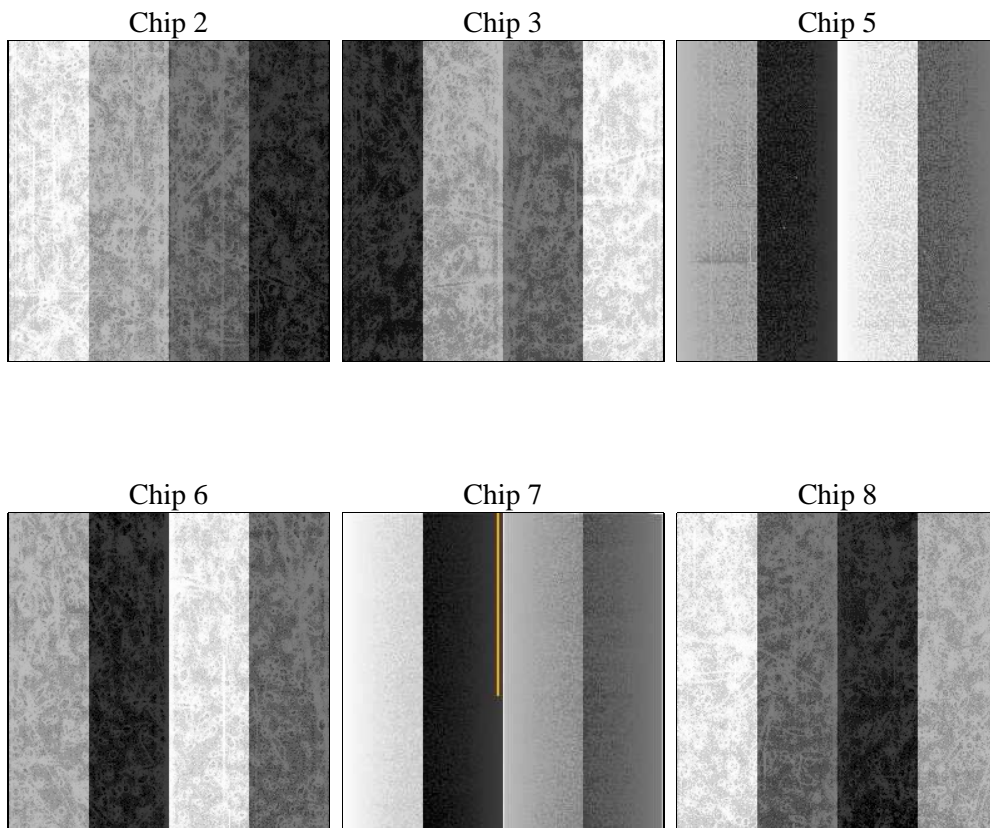
2 OBI

2.1 OBI

2.1.1 Images



2.1.2 Bias



2.1.3 Parameters

obi_num	0	Obi number	sched_exp_time	5000.000000	[s] Scheduled observation exposure time
ascdsver	8.4.4	Processing system revision	ontime	5129.5999809504	Sum of GTIs [s]
caldsver	4.4.9	 	ontime2	5129.5999809504	Sum of GTIs [s]
date	2012-05-04T13:33:44	Date and time of file creation	ontime3	5129.5999809504	Sum of GTIs [s]
revision	2	Processing version of data	ontime5	5129.5999809504	Sum of GTIs [s]
			ontime6	5129.5999809504	Sum of GTIs [s]
			ontime7	5129.5999809504	Sum of GTIs [s]
			ontime8	5129.5999809504	Sum of GTIs [s]
			l1events	378190	Number of level 1 events

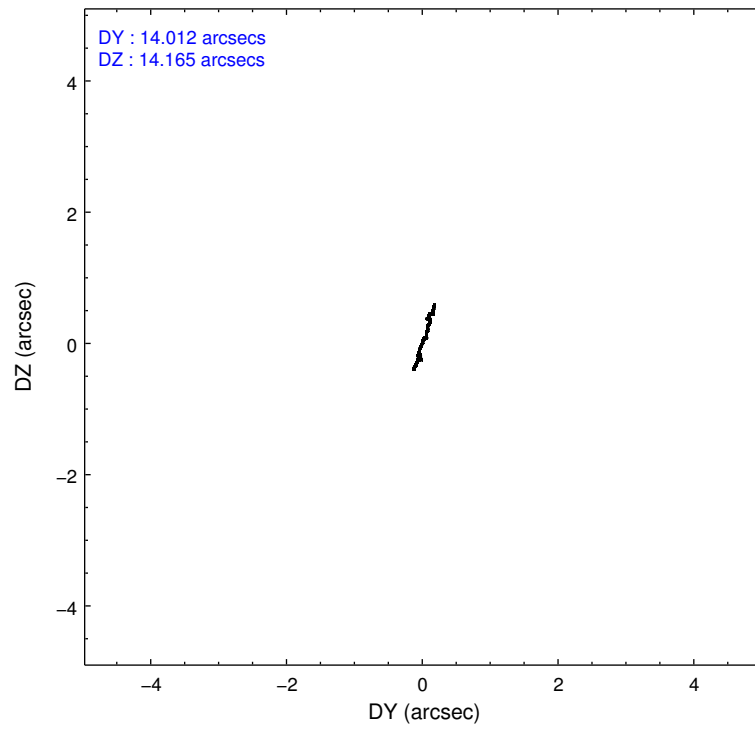
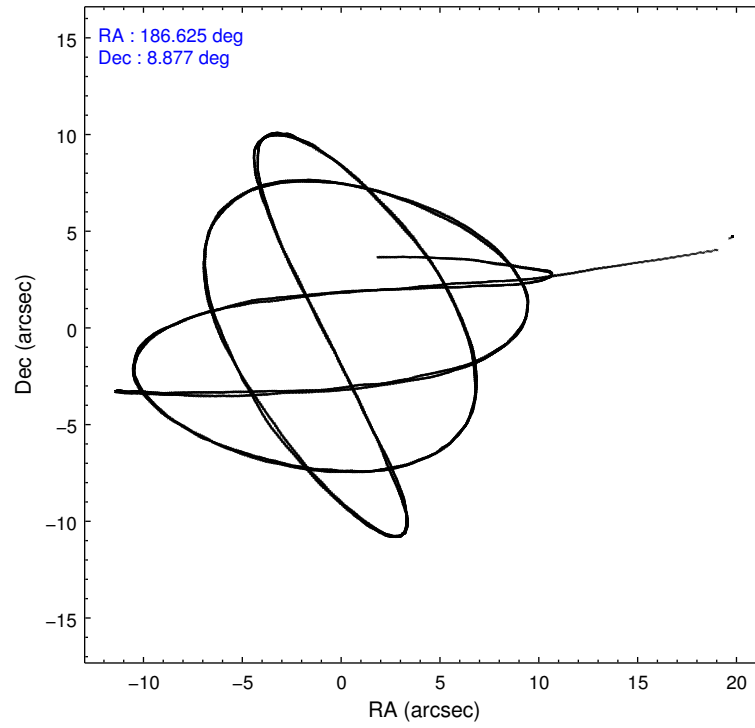
2.1.4 Events

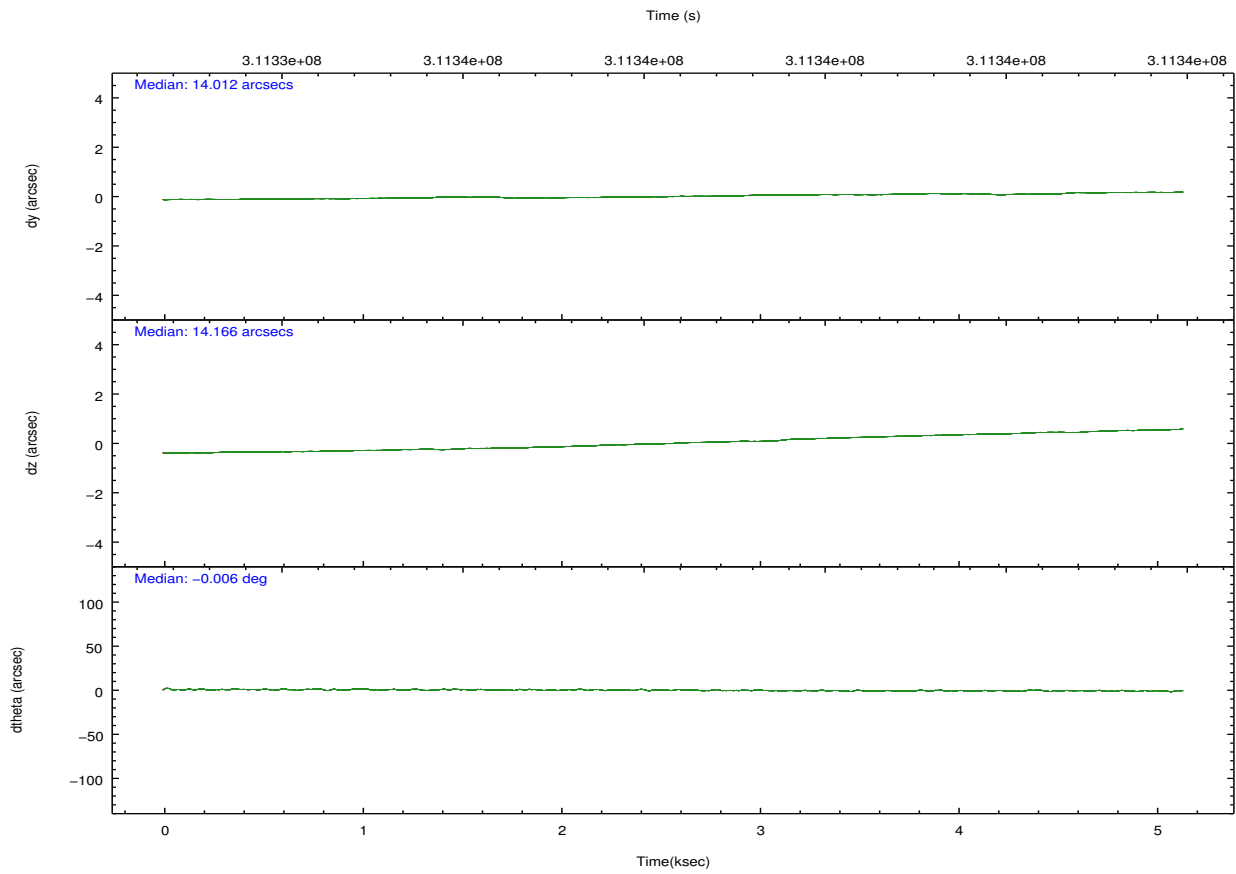
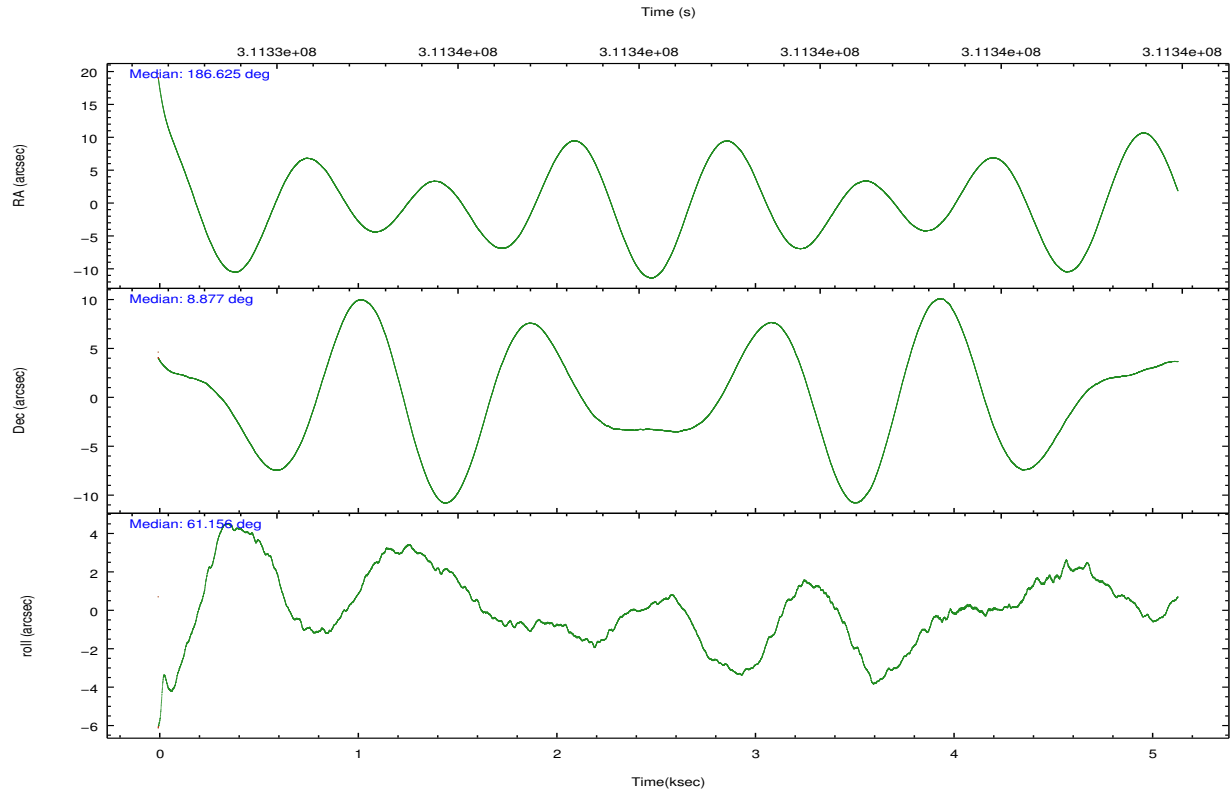
	ccd 2	ccd 3	ccd 5	ccd 6	ccd 7	ccd 8		ccd 2	ccd 3	ccd 5	ccd 6	ccd 7	ccd 8
level 1 events	54935	51176	82584	53540	70976	64979	grade 0 events	3781	2783	5753	2527	2525	4573
rejected events	47866	45240	45059	47582	42815	51418		6%	5%	6%	4%	3%	7%
rejected %	87%	88%	54%	88%	60%	79%	grade 1 events	41	40	433	34	72	48
								0%	0%	0%	0%	0%	0%
							grade 2 events	1361	1195	11811	1358	5940	3372
								2%	2%	14%	2%	8%	5%
							grade 3 events	593	597	1263	588	2505	1431
								1%	1%	1%	1%	3%	2%
							grade 4 events	607	594	1267	541	2498	1395
								1%	1%	1%	1%	3%	2%
							grade 5 events	2011	2410	5537	2469	6801	3300
								3%	4%	6%	4%	9%	5%
							grade 6 events	1066	1082	19361	1264	16100	3740
								1%	2%	23%	2%	22%	5%
							grade 7 events	45475	42475	37159	44759	34535	47120
								82%	82%	44%	83%	48%	72%

2.2 Compared Parameters

Parameter	Planned	Actual	Parameter	Planned	Actual
Instrument	ACIS	ACIS	Obspar format version number	7	7
Detector	ACIS-235678	ACIS-235678	Obspar file type	PREDICTED	ACTUAL
Grating	NONE	NONE	Obspar update status	NONE	UPDATED
Data mode	FAINT	FAINT	Number of optional ACIS chips dropped	0	0
Observation mode	POINTING	POINTING	On-chip summing requested	N	N
[deg] Pointing RA	186.626109	186.6252539162719	Subarray requested	NONE	NONE
[deg] Pointing Dec	8.849733	8.877086224797084	Alternating exposures requested	N	N
[deg] Pointing Roll	60.999892	61.15664791475142	[s] Primary exposure time	0.000000	3.2
[mm] SIM focus pos	-0.684267	-0.6828225247311905			
[mm] SIM defocus	0	0.001444936568705701			
[mm] SIM translation stage pos	-190.132523	-190.1425803651734			
[mm] SIM translation stage offset	0	0.01005778216563158			
[s] Observation start time (MET)	311333728.184000	311332549.78734			
Observation start date	2007-11-13T09:34:23	2007-11-13T09:15:49			
[s] Observation end time (MET)	311338728.184000	311339085.18766			
Observation end date	2007-11-13T10:57:43	2007-11-13T11:04:45			
Read mode	TIMED	TIMED			

2.3 Aspect



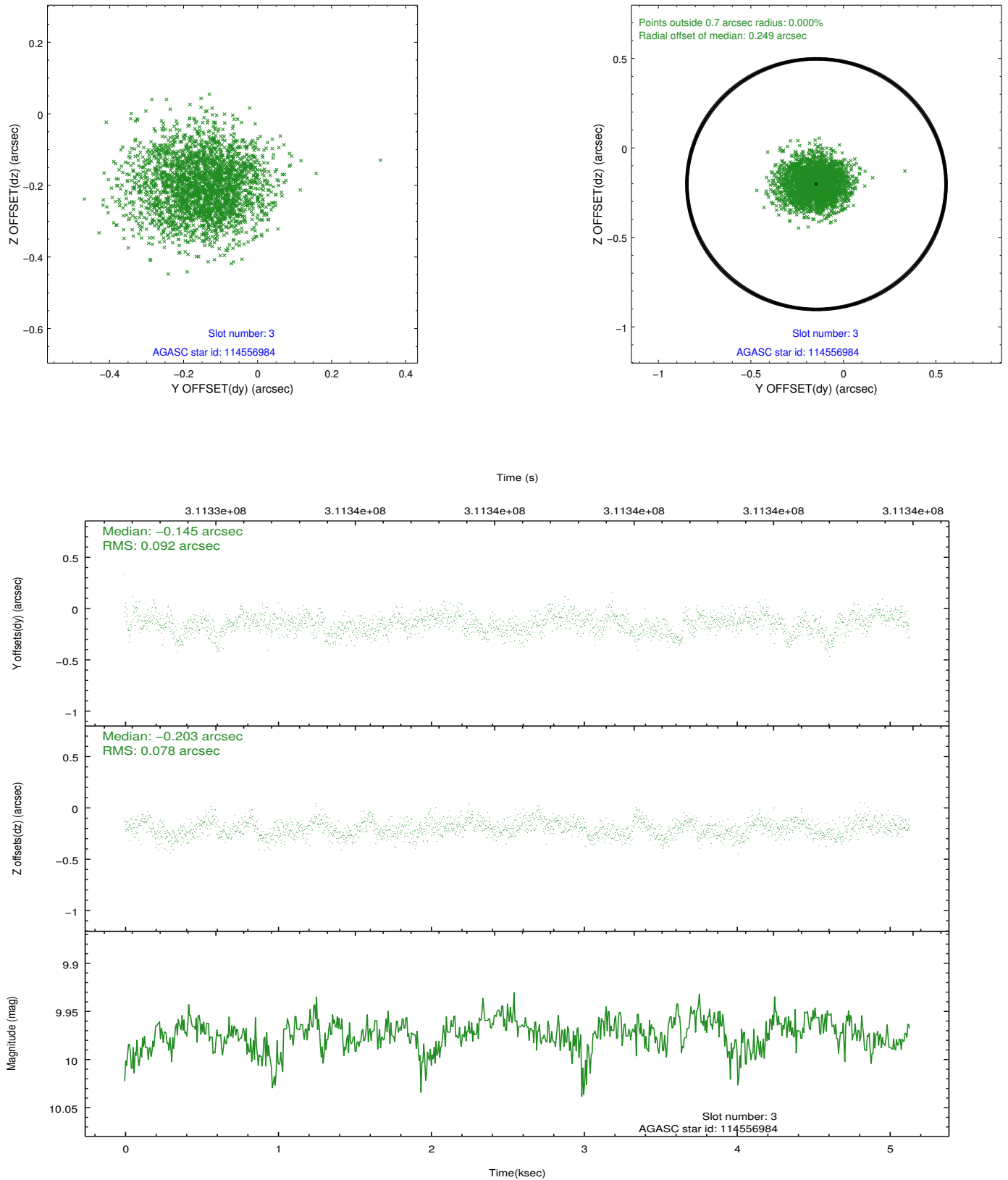


Slot Statistics

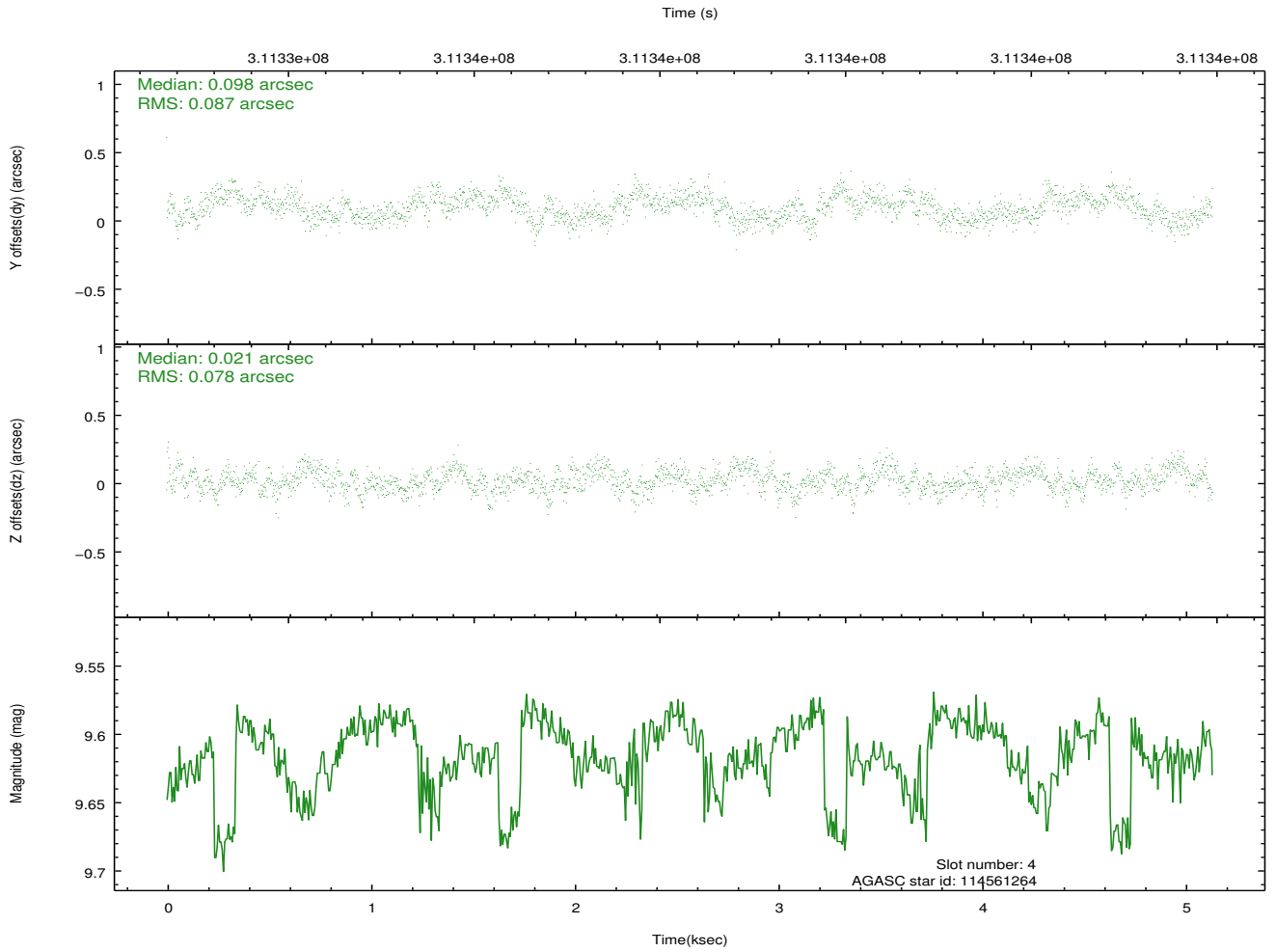
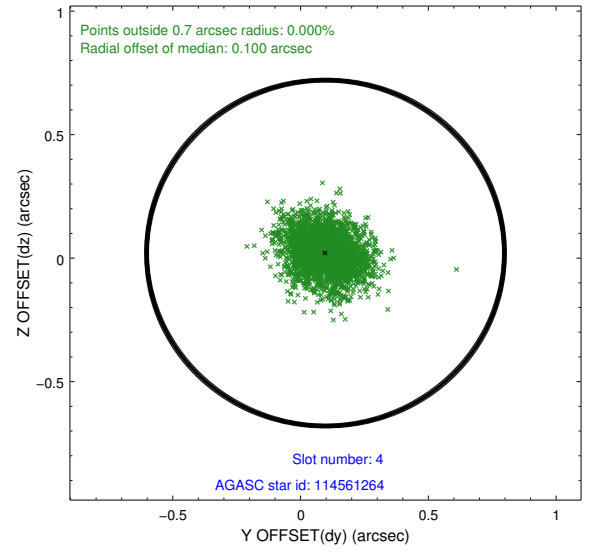
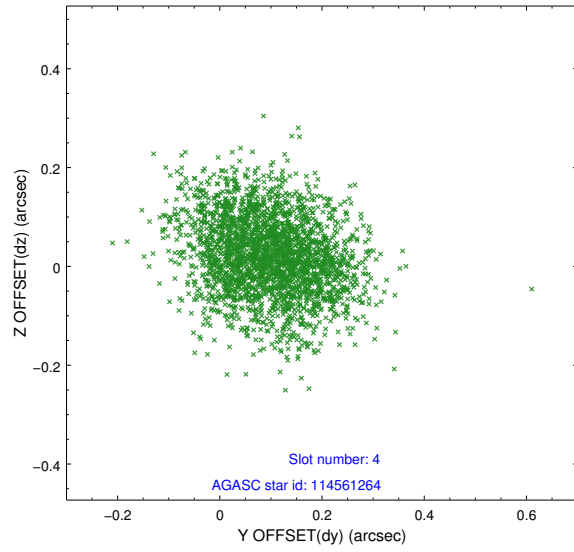
slot	status	id	mag	n_pts	med_dy	med_dz	dr1	dr2	ra	dec	mean_y	mean_z
0	FID	ACIS-S-1	7.19	1253	0.074	-0.031	0.010	0.017	0.000000	0.000000	929.15	-1731.16
1	FID	ACIS-S-5	7.23	1253	-0.158	0.045	0.010	0.016	0.000000	0.000000	-1819.43	165.24
2	FID	ACIS-S-6	7.33	1253	0.062	-0.005	0.015	0.028	0.000000	0.000000	393.40	810.50
3	GUIDE	114556984	9.97	2504	-0.145	-0.203	0.130	0.206	186.603051	9.417402	1747.19	1062.91
4	GUIDE	114561264	9.61	2503	0.098	0.021	0.124	0.198	186.762657	8.969089	612.22	-215.49
5	GUIDE	114565400	6.32	2506	0.045	-0.060	0.066	0.113	186.925333	8.610343	-236.58	-1349.09
6	GUIDE	114563576	7.88	2505	0.006	0.102	0.062	0.095	186.867039	8.012388	-2220.24	-2212.33
7	GUIDE	114558824	9.74	2502	0.003	0.131	0.125	0.207	187.023305	9.331255	2200.07	-393.95

2.4 Star Slots

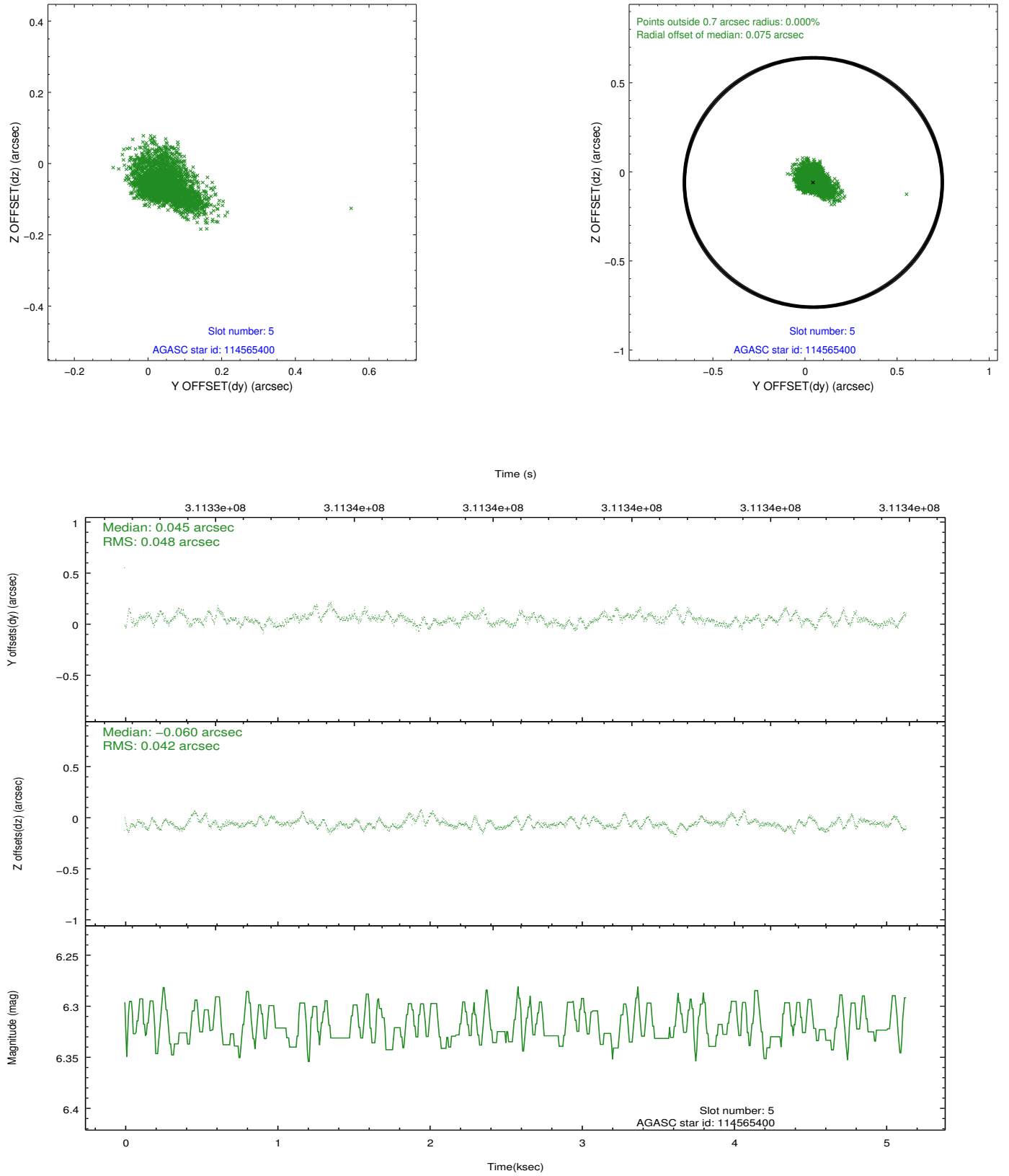
2.4.1 Slot 3



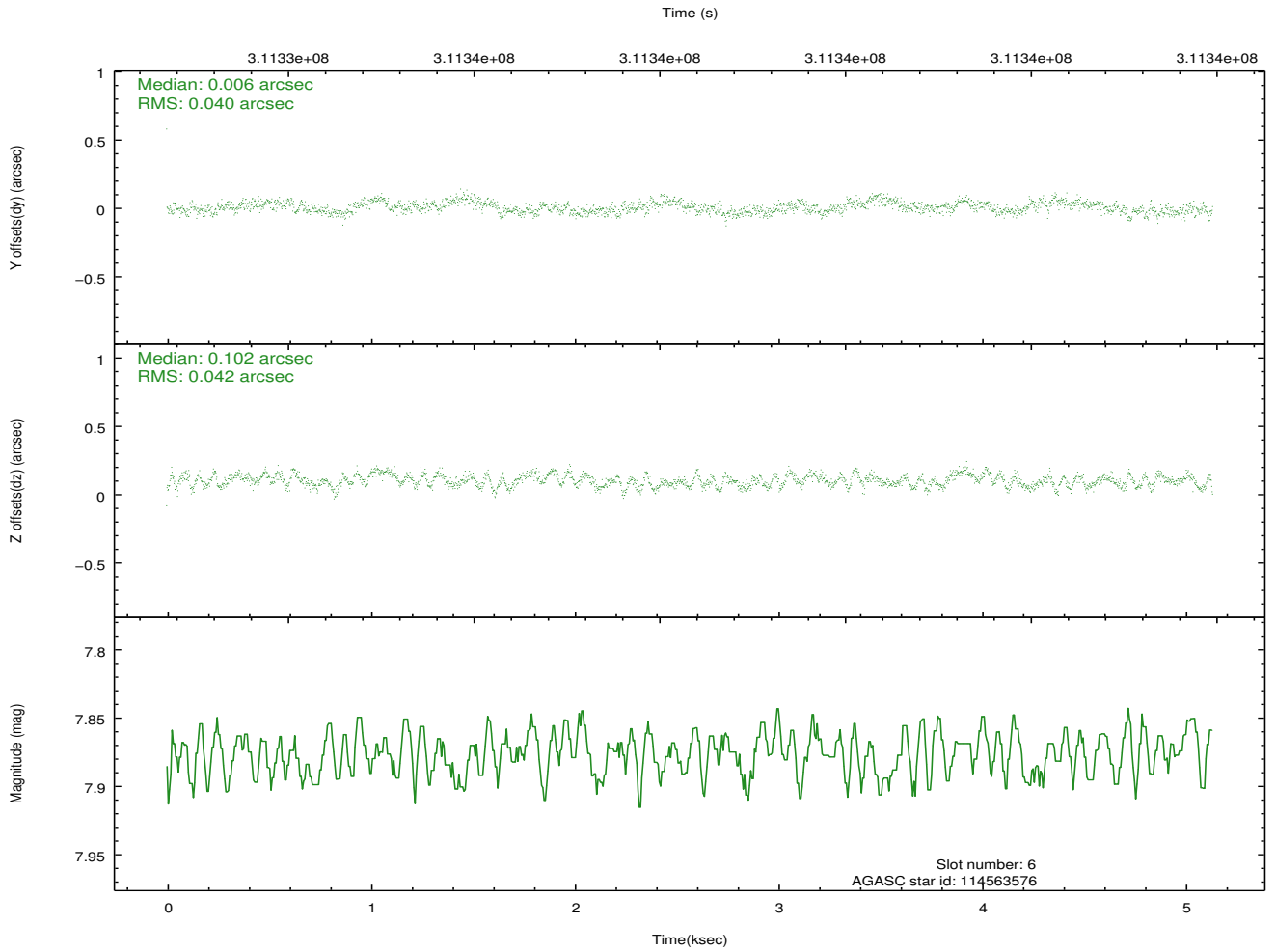
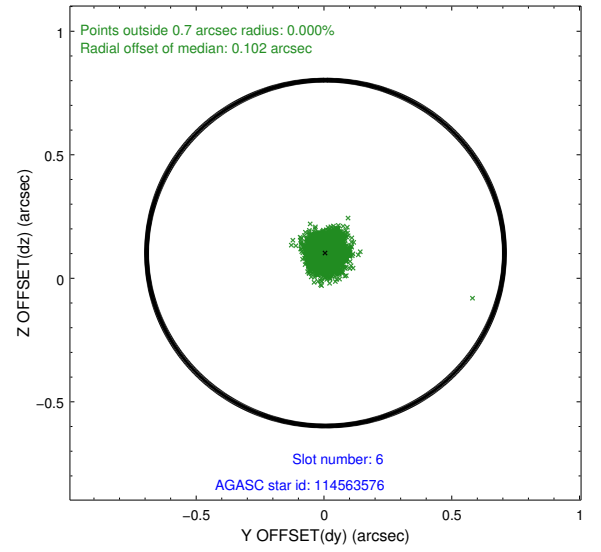
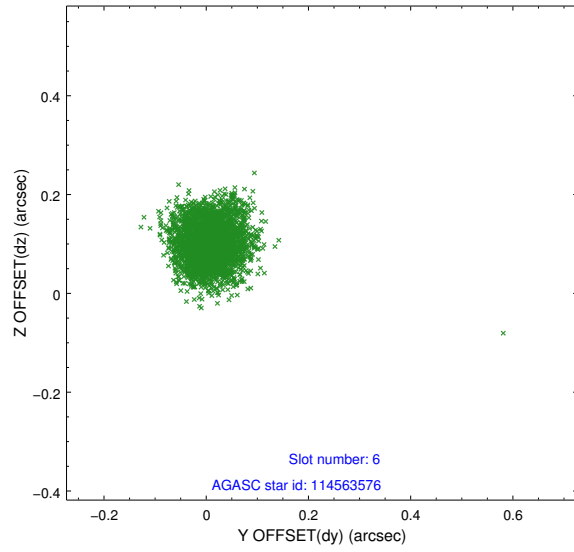
2.4.2 Slot 4



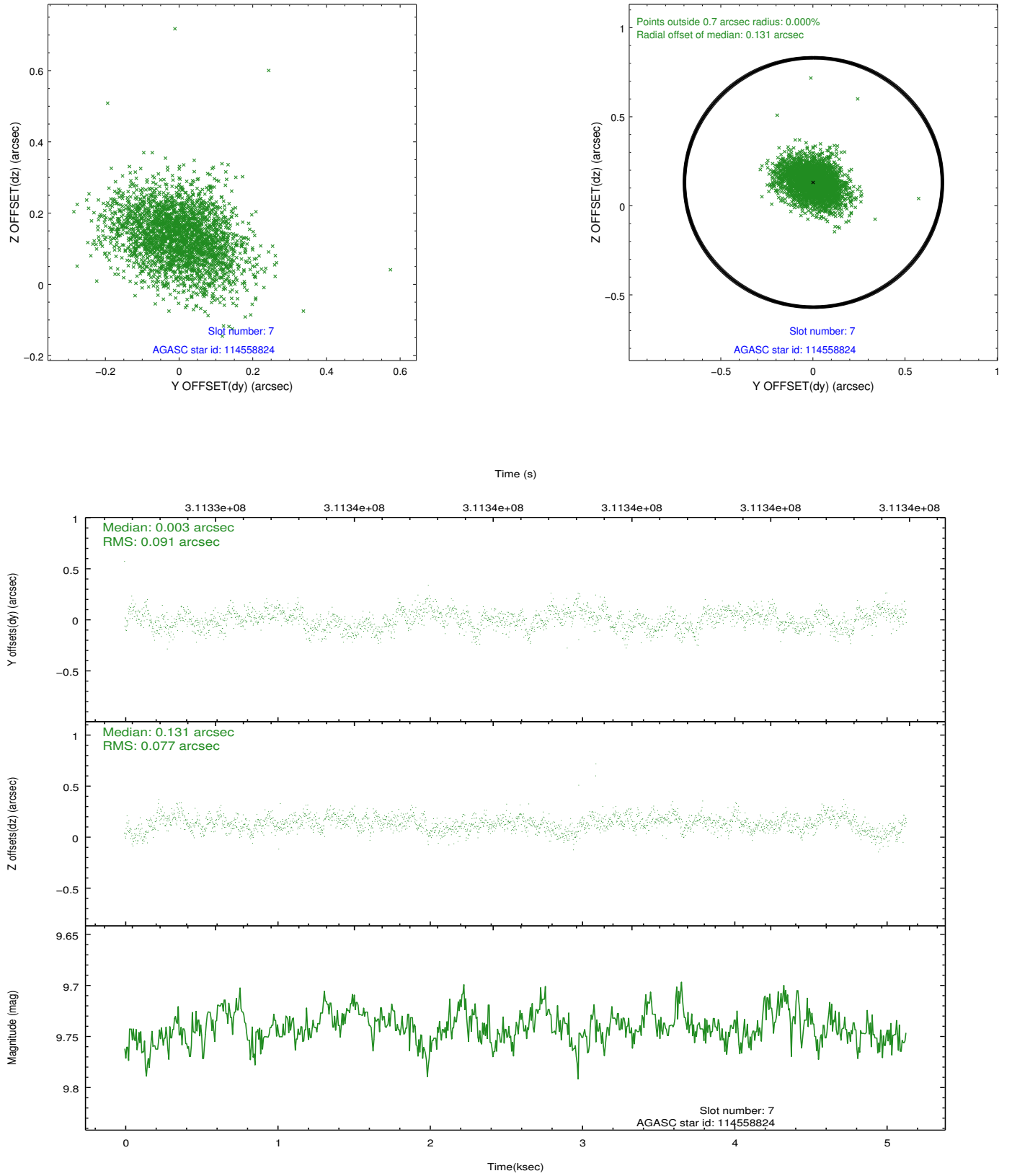
2.4.3 Slot 5



2.4.4 Slot 6

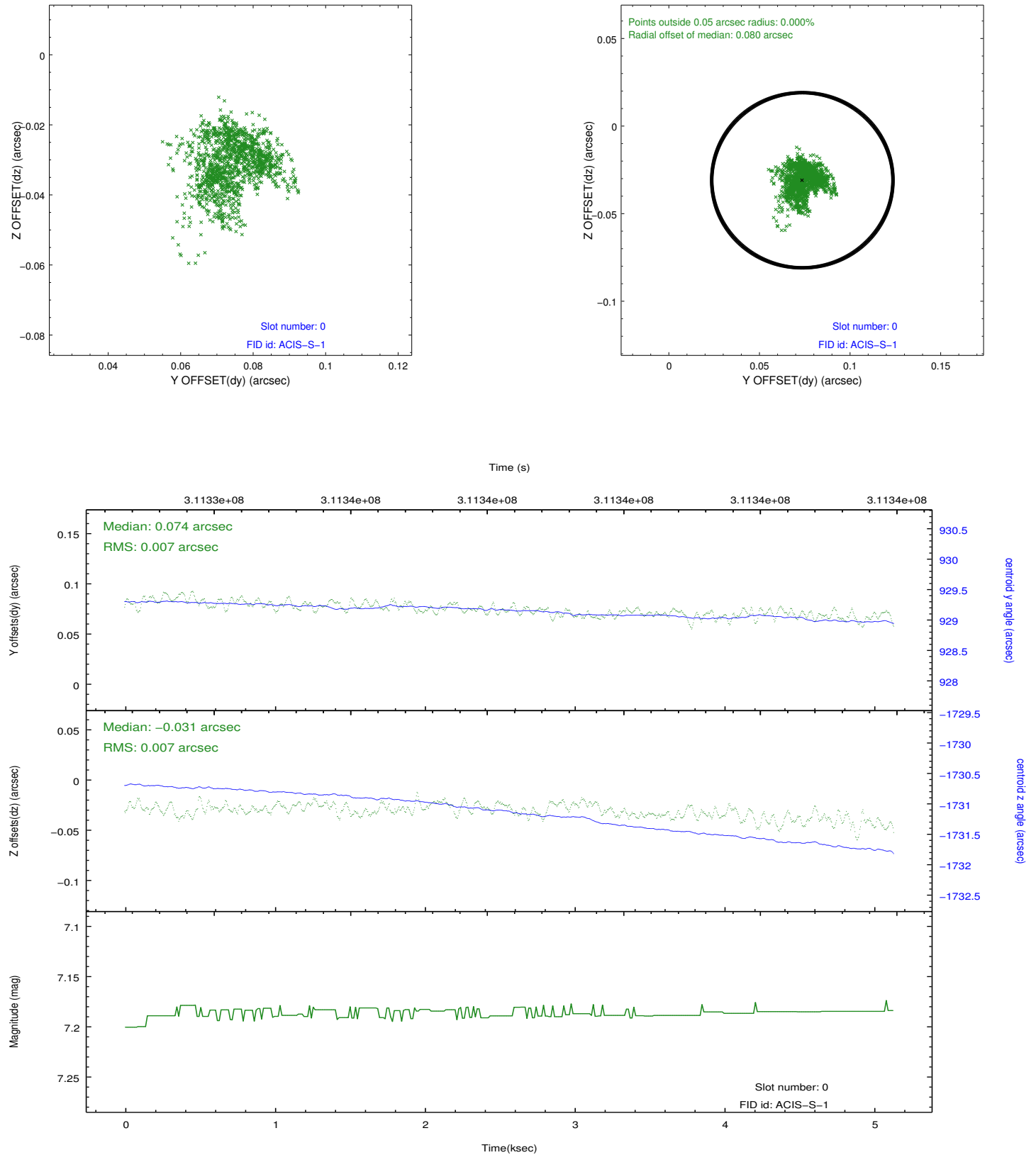


2.4.5 Slot 7

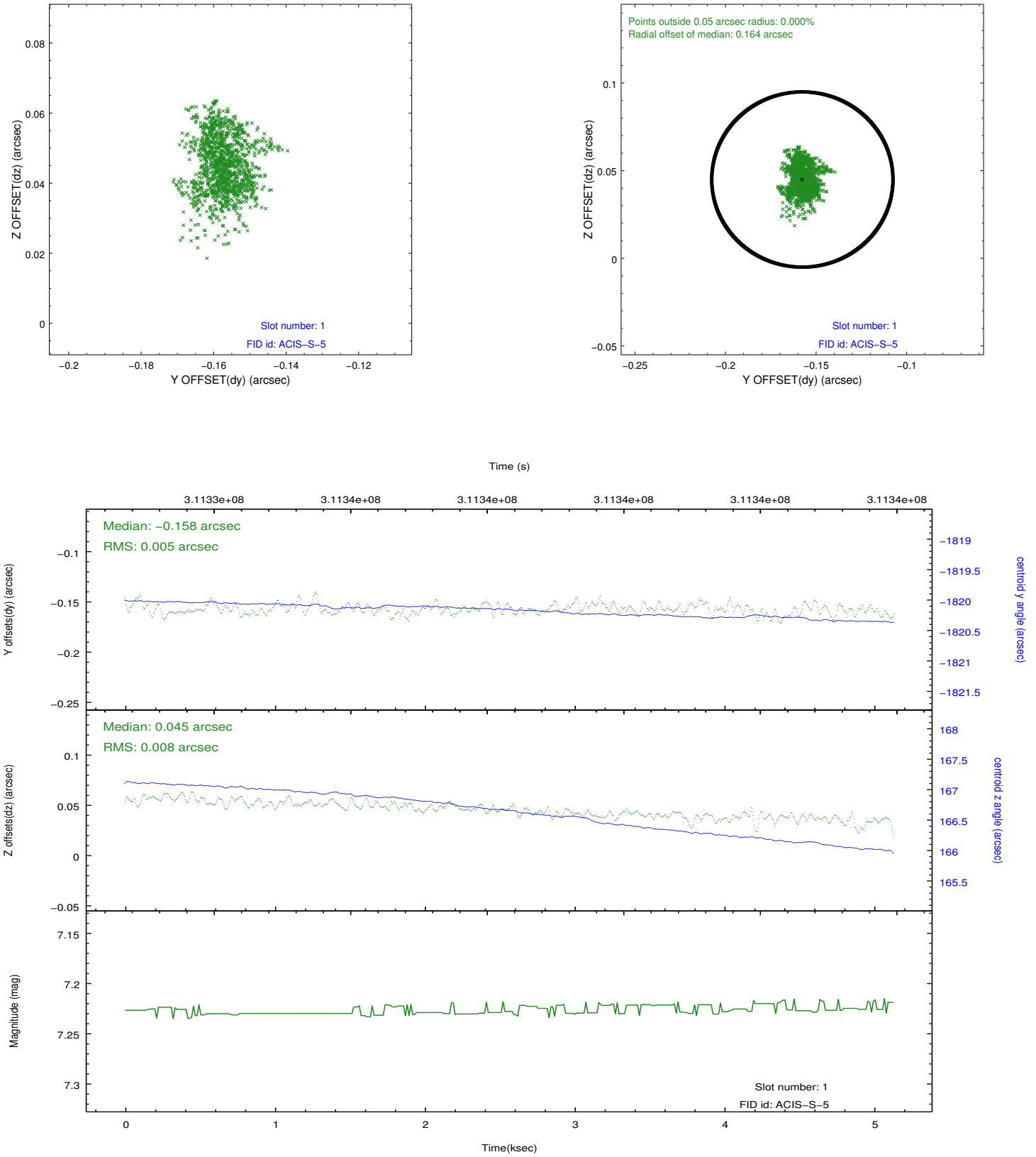


2.5 FID Slots

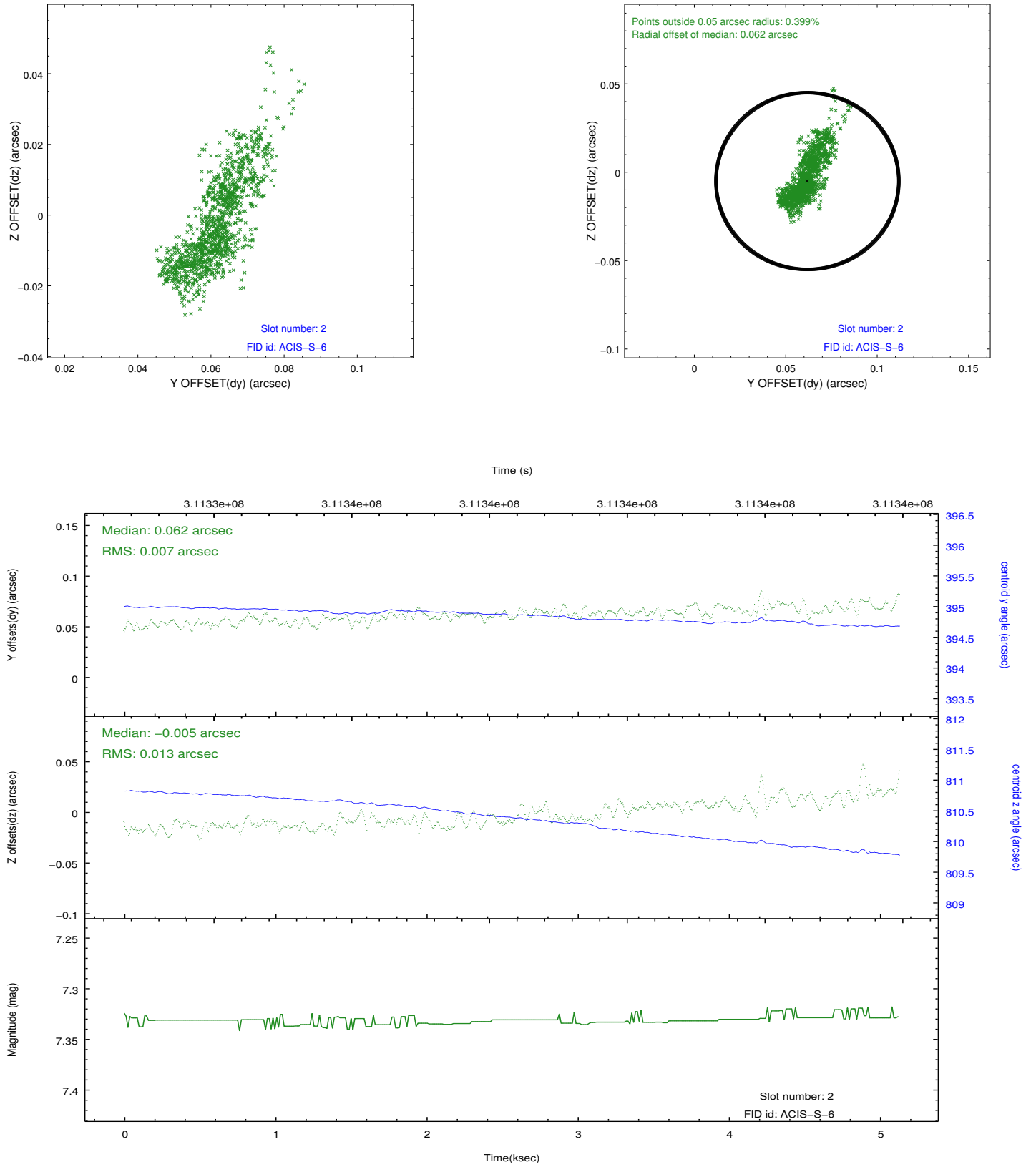
2.5.1 Slot 0



2.5.2 Slot 1



2.5.3 Slot 2



A Summary

A.1 Status

V&V Scientist	Jen Lauer
V&V Date (YYYY-MM-DD)	2012.05.07
V&V Edition	1
V&V Disposition and Status	OK
V&V Charge Time	5.12959998

A.2 Comments