

# V&V Reference Report

## L2 ASCDS Version : 7.6.10

Observation 777 - L2 Version 001  
Chandra X-Ray Center

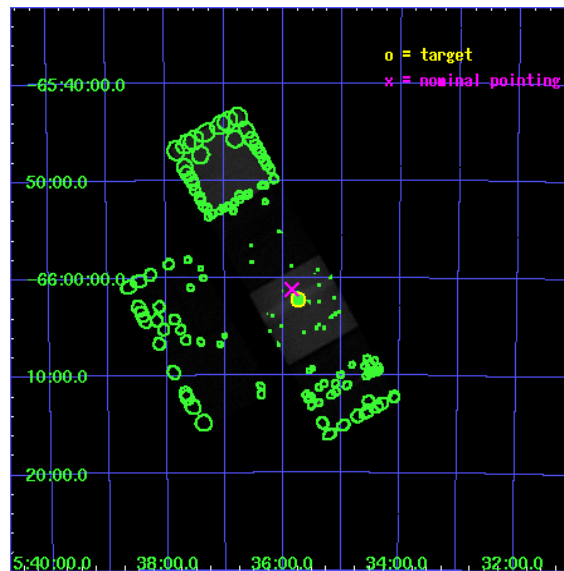
L2 Processing Date : Jun 12 2007

## Contents

<b>1</b>	<b>Front</b>	<b>2</b>
<b>2</b>	<b>OBI</b>	<b>3</b>
2.1	OBI . . . . .	3
2.1.1	Images . . . . .	3
2.1.2	Bias . . . . .	3
2.1.3	Parameters . . . . .	4
2.1.4	Events . . . . .	4
2.2	Compared Parameters . . . . .	5
2.3	Aspect . . . . .	6
2.4	Star Slots . . . . .	9
2.4.1	Slot 3 . . . . .	9
2.4.2	Slot 4 . . . . .	10
2.4.3	Slot 5 . . . . .	11
2.4.4	Slot 6 . . . . .	12
2.4.5	Slot 7 . . . . .	13
2.5	FID Slots . . . . .	14
2.5.1	Slot 0 . . . . .	14
2.5.2	Slot 1 . . . . .	15
2.5.3	Slot 2 . . . . .	16
<b>3</b>	<b>Point Sources</b>	<b>17</b>
<b>A</b>	<b>Summary</b>	<b>18</b>
A.1	Status . . . . .	18
A.2	Comments . . . . .	18

# 1 Front

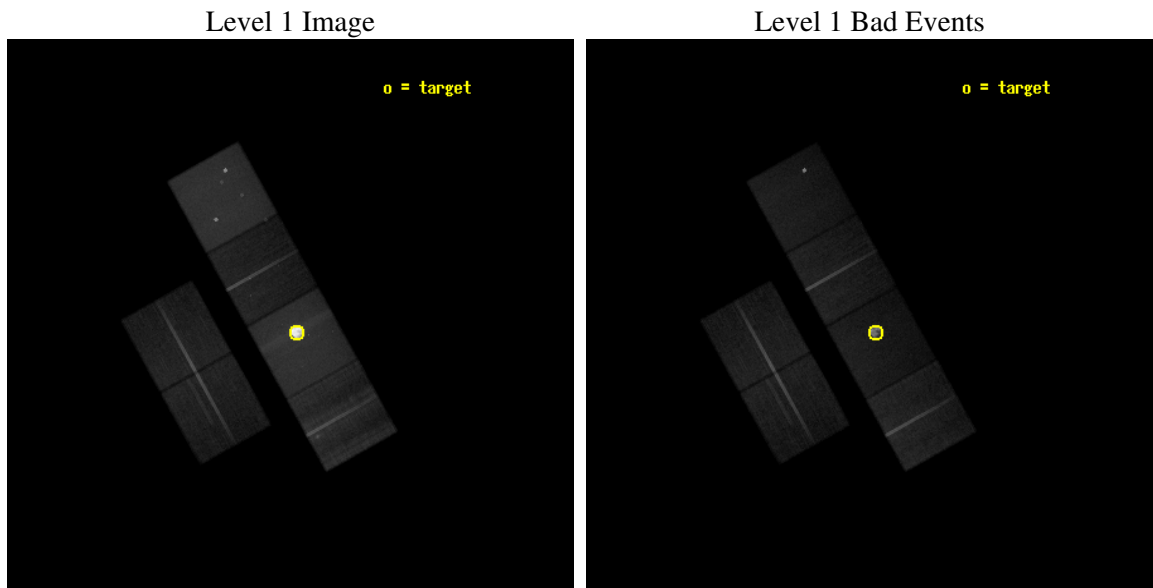
seq_num	500073
obs_id	777
title	A SYSTEMATIC STUDY OF LMC SNRS WITH AXAF
observer	Prof. John Hughes
object	N63A
dtcycle	0
cycle	P
ra_targ	83.93375
dec_targ	-66.037222
ra_nom	83.962680447461
dec_nom	-66.019855577906
roll_nom	60.884041118434
revision	3
ontime	43907.159080654
livetime	43351.180194658
ontime2	43907.159080654
ontime3	43907.159050748
ontime5	43907.159110561
ontime6	43907.159080654
ontime7	43907.159080654
ontime8	43907.159080654
l2events	1911957



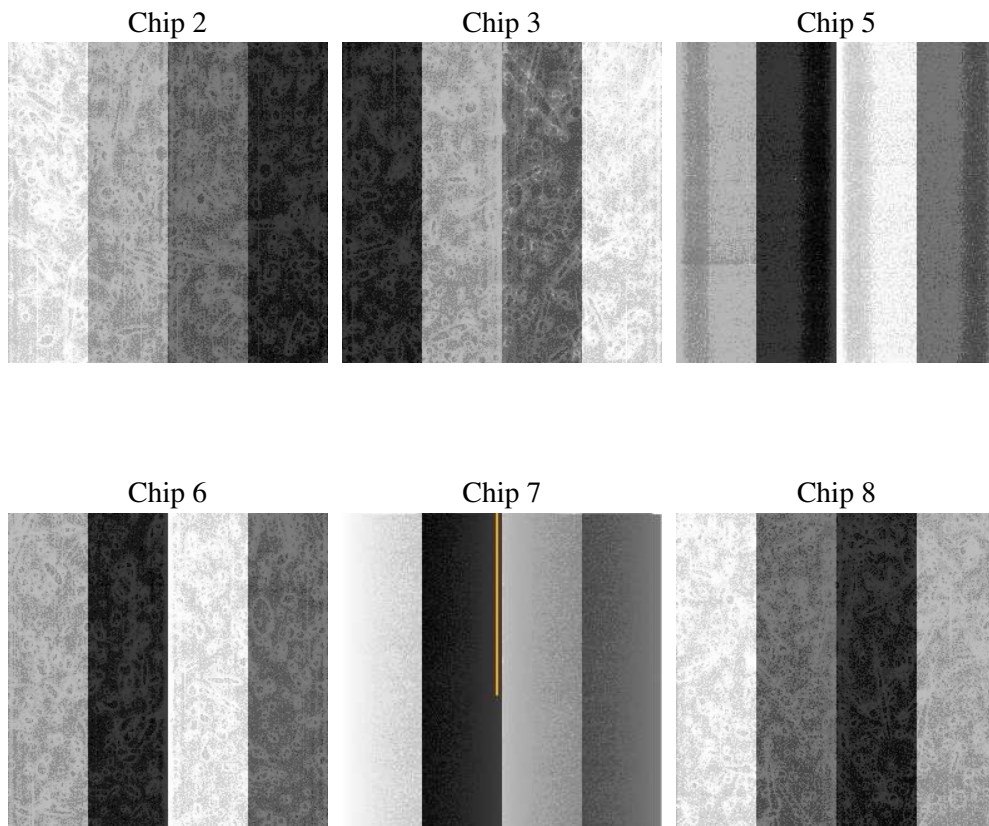
## 2 OBI

### 2.1 OBI

#### 2.1.1 Images



#### 2.1.2 Bias



### 2.1.3 Parameters

obi_num	0
ascdsver	7.6.10
caldsver	3.4.0
date	2007-06-12T12:50:27
revision	3

sched_exp_time	44000.000000
ontime	43907.159080654
ontime2	43907.159080654
ontime3	43907.159050748
ontime5	43907.159110561
ontime6	43907.159080654
ontime7	43907.159080654
ontime8	43907.159080654
l1events	3573210

### 2.1.4 Events

	ccd 2	ccd 3	ccd 5	ccd 6	ccd 7	ccd 8
level 1 events	307606	288940	538805	302915	1719252	415692
rejected events	270846	254396	222928	261313	243513	296340
rejected %	88%	88%	41%	86%	14%	71%

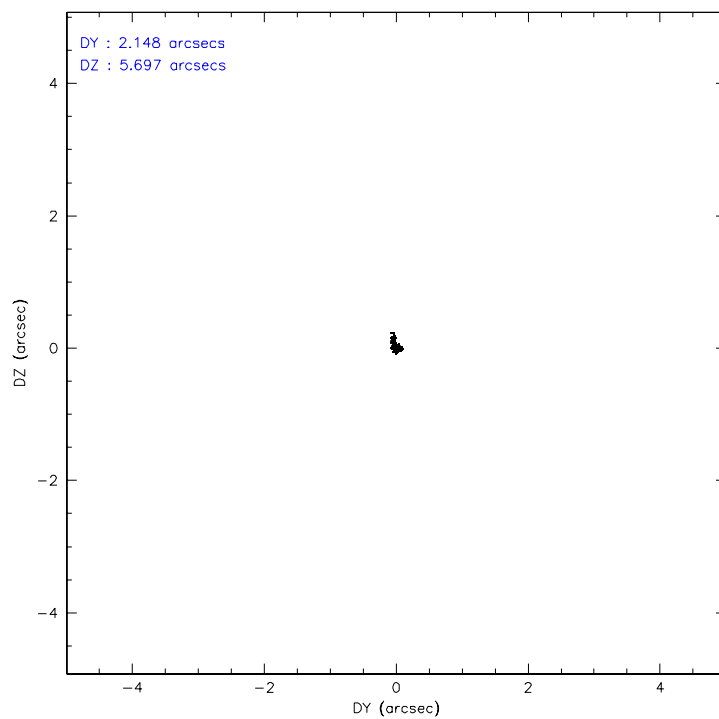
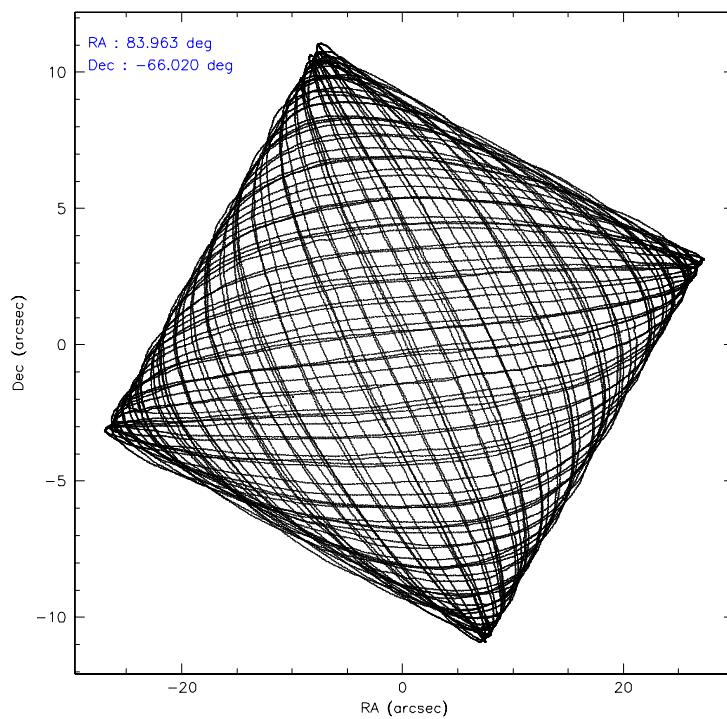
	ccd 2	ccd 3	ccd 5	ccd 6	ccd 7	ccd 8
grade 0 events	17164	16262	55849	20682	459806	39818
	5%	5%	10%	6%	26%	9%
grade 1 events	107	139	9380	161	9532	305
	0%	0%	1%	0%	0%	0%
grade 2 events	7879	6678	86278	7878	372665	21953
	2%	2%	16%	2%	21%	5%
grade 3 events	3047	3022	18019	3415	167602	15492
	0%	1%	3%	1%	9%	3%
grade 4 events	3127	3083	17705	3287	165978	13658
	1%	1%	3%	1%	9%	3%
grade 5 events	9334	10191	30952	11137	54470	14795
	3%	3%	5%	3%	3%	3%
grade 6 events	5544	5502	138056	6341	309823	28441
	1%	1%	25%	2%	18%	6%
grade 7 events	261404	244063	182566	250014	179376	281230
	84%	84%	33%	82%	10%	67%

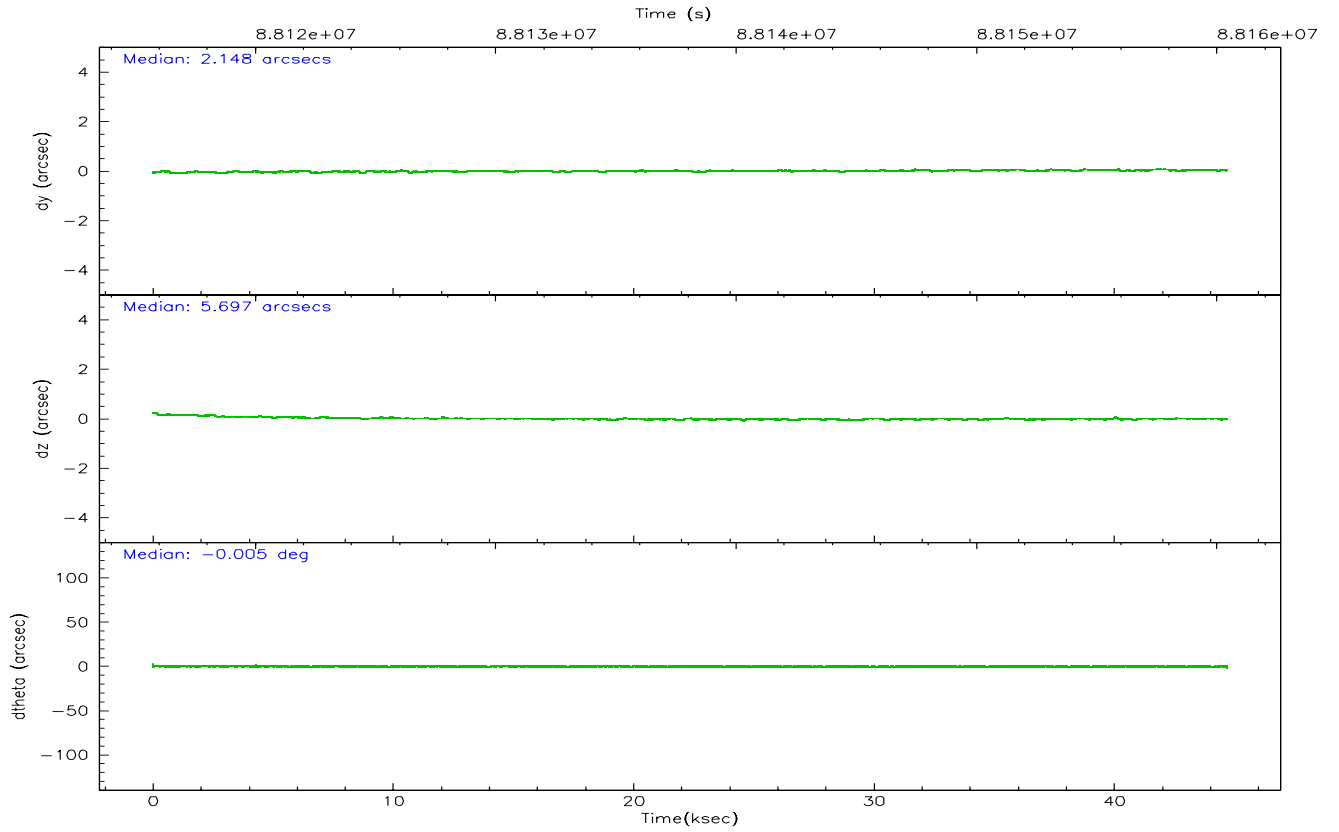
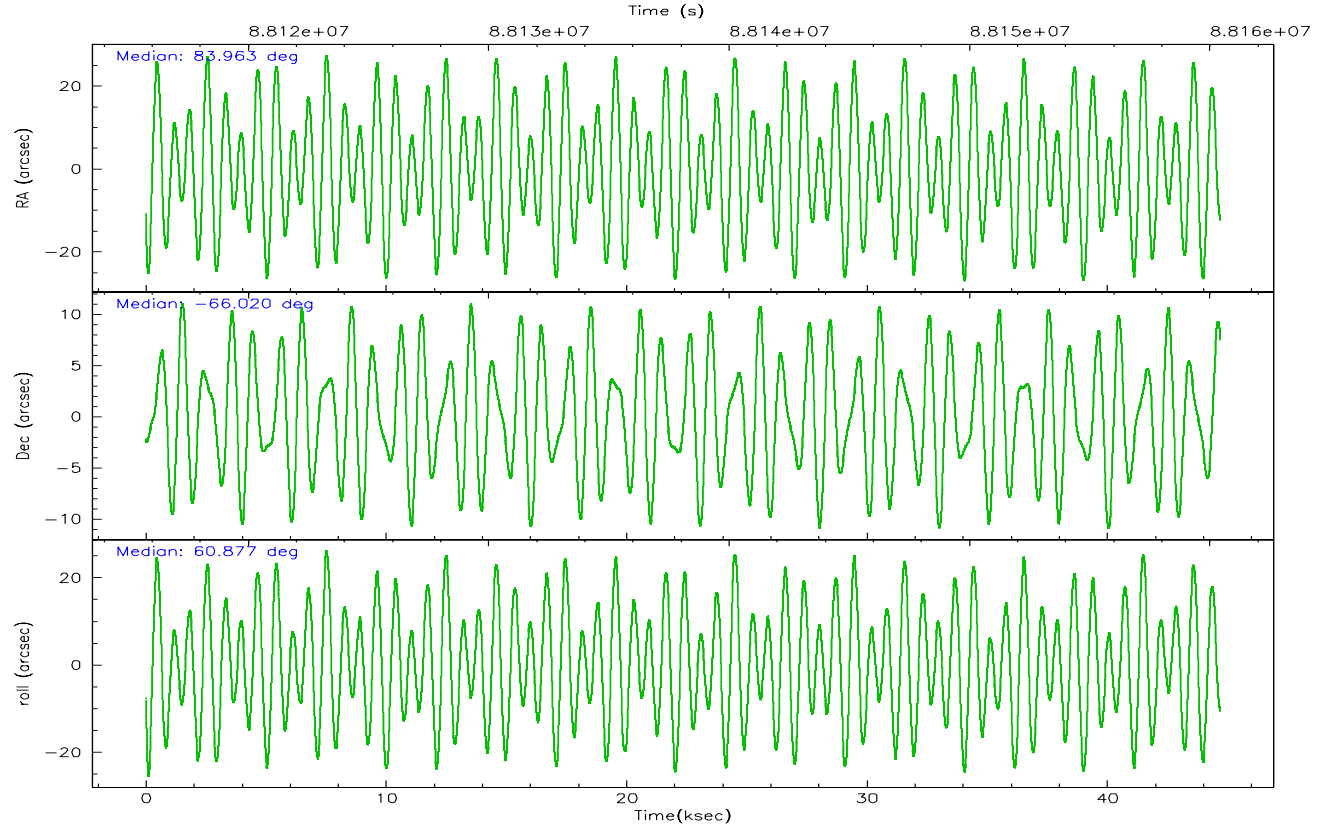


## 2.2 Compared Parameters

Parameter	Planned	Actual	Parameter	Planned	Actual
Instrument	ACIS	ACIS	Obspar format version number	6	6
Detector	ACIS-235678	ACIS-235678	Obspar file type	PREDICTED	ACTUAL
Grating	NONE	NONE	Obspar update status	NONE	UPDATED
Data mode	FAINT	FAINT	Number of optional ACIS chips dropped	0	0
Observation mode	POINTING	POINTING	On-chip summing requested	N	N
Pointing RA	83.964180	83.96268044746078	Subarray requested	NONE	NONE
Pointing Dec	-66.047206	-66.01985557790582	Alternating exposures requested	N	N
Pointing Roll	60.728787	60.88404111843391	Primary exposure time	3.200000	3.2
SIM focus pos (mm)	-0.684267	-0.6828225247311905			
SIM defocus (mm)	0	0.001444936568705701			
SIM translation stage pos (mm)	-190.132523	-190.1425803651734			
SIM translation stage offset (mm)	0	0.01005778216563158			
Observation start time	88116435.184000	88115222.725776			
Observation start date	2000-10-16T20:46:11	2000-10-16T20:27:02			
Observation end time	88160435.184000	88160950.540004			
Observation end date	2000-10-17T08:59:31	2000-10-17T09:09:10			
Read mode	TIMED	TIMED			

## 2.3 Aspect



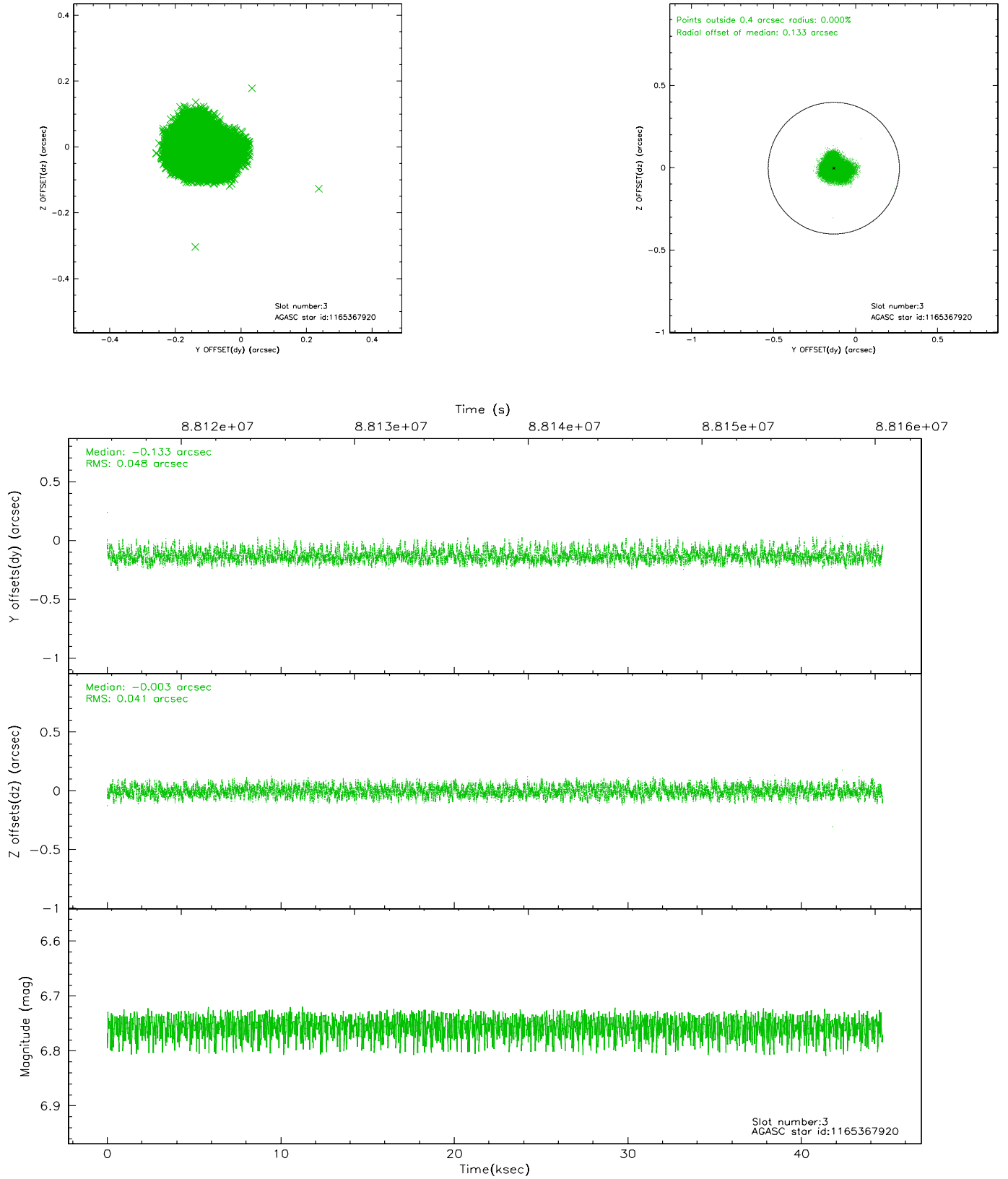


### Slot Statistics

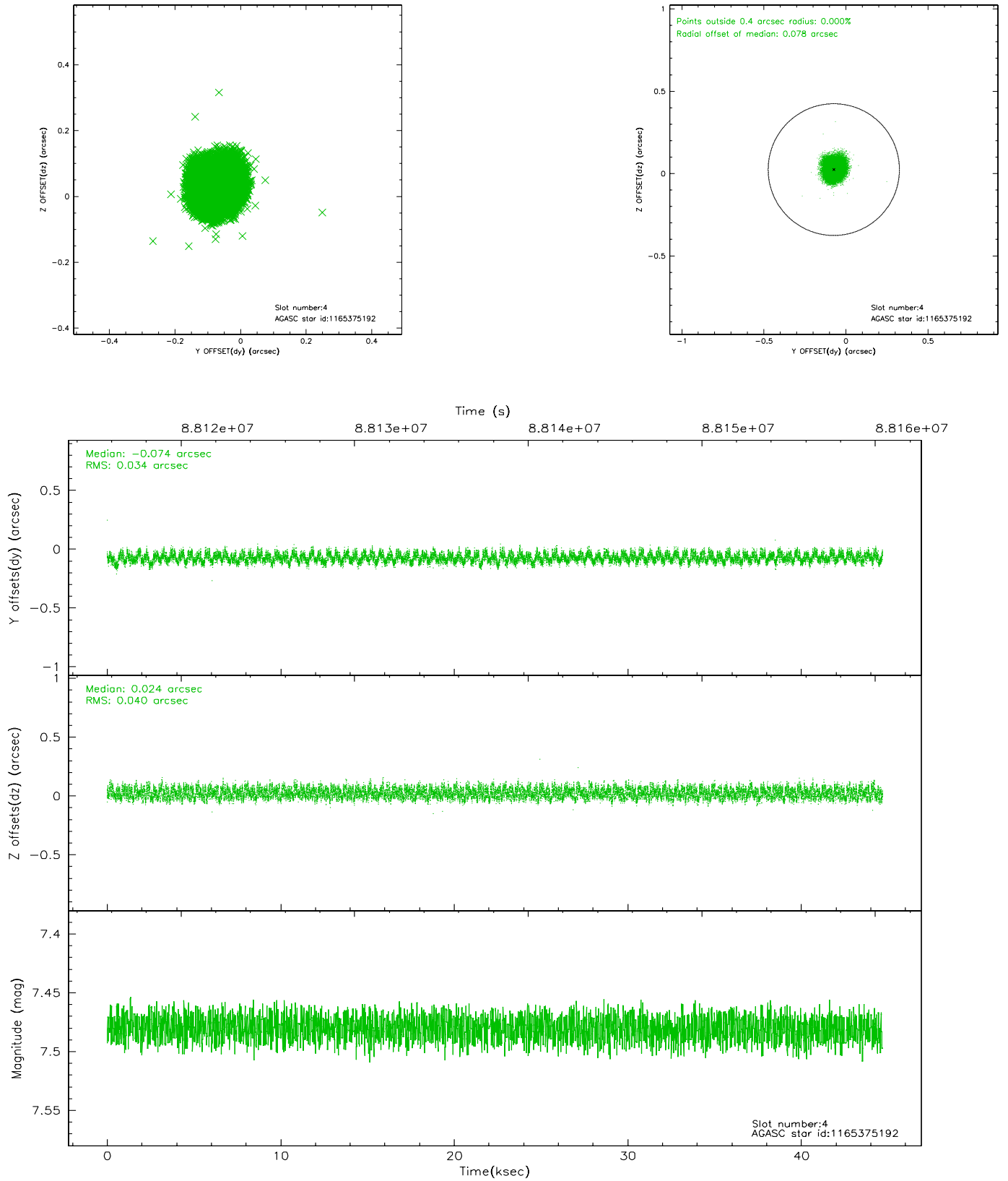
slot	status	id	mag	n_pts	med_dy	med_dz	dr1	dr2	ra	dec	mean_y	mean_z
0	FID	ACIS-S-2	7.11	10898	-0.035	0.023	0.006	0.010	0.000000	0.000000	-754.78	-1726.78
1	FID	ACIS-S-4	7.20	10898	-0.046	0.011	0.005	0.009	0.000000	0.000000	2158.46	181.74
2	FID	ACIS-S-5	7.23	10898	0.050	-0.025	0.006	0.011	0.000000	0.000000	-1807.57	175.31
3	GUIDE	1165367920	6.76	21795	-0.133	-0.003	0.068	0.104	84.229085	-66.560284	-1426.00	-1234.17
4	GUIDE	1165375192	7.48	21800	-0.074	0.024	0.057	0.087	84.093045	-66.290326	-672.06	-590.43
5	GUIDE	1167069360	9.57	21786	0.151	0.004	0.115	0.183	85.839523	-65.726950	2327.18	-1876.57
6	GUIDE	1165371736	10.16	21667	0.132	-0.031	0.126	0.201	82.443391	-66.041658	-1092.56	1935.93
7	GUIDE	1165374200	9.85	21781	-0.080	0.002	0.110	0.177	83.207893	-65.682736	590.62	1616.82

## 2.4 Star Slots

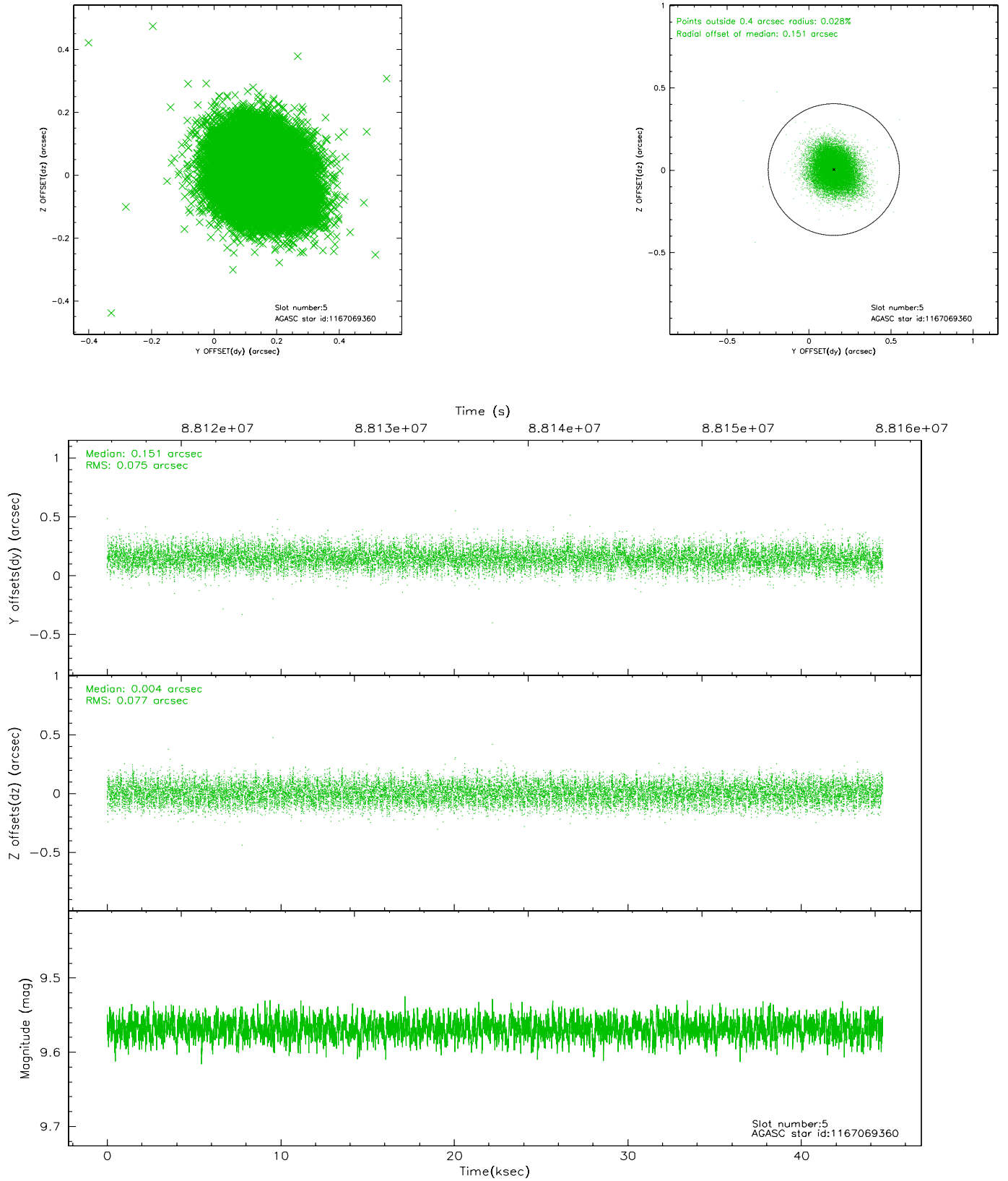
### 2.4.1 Slot 3



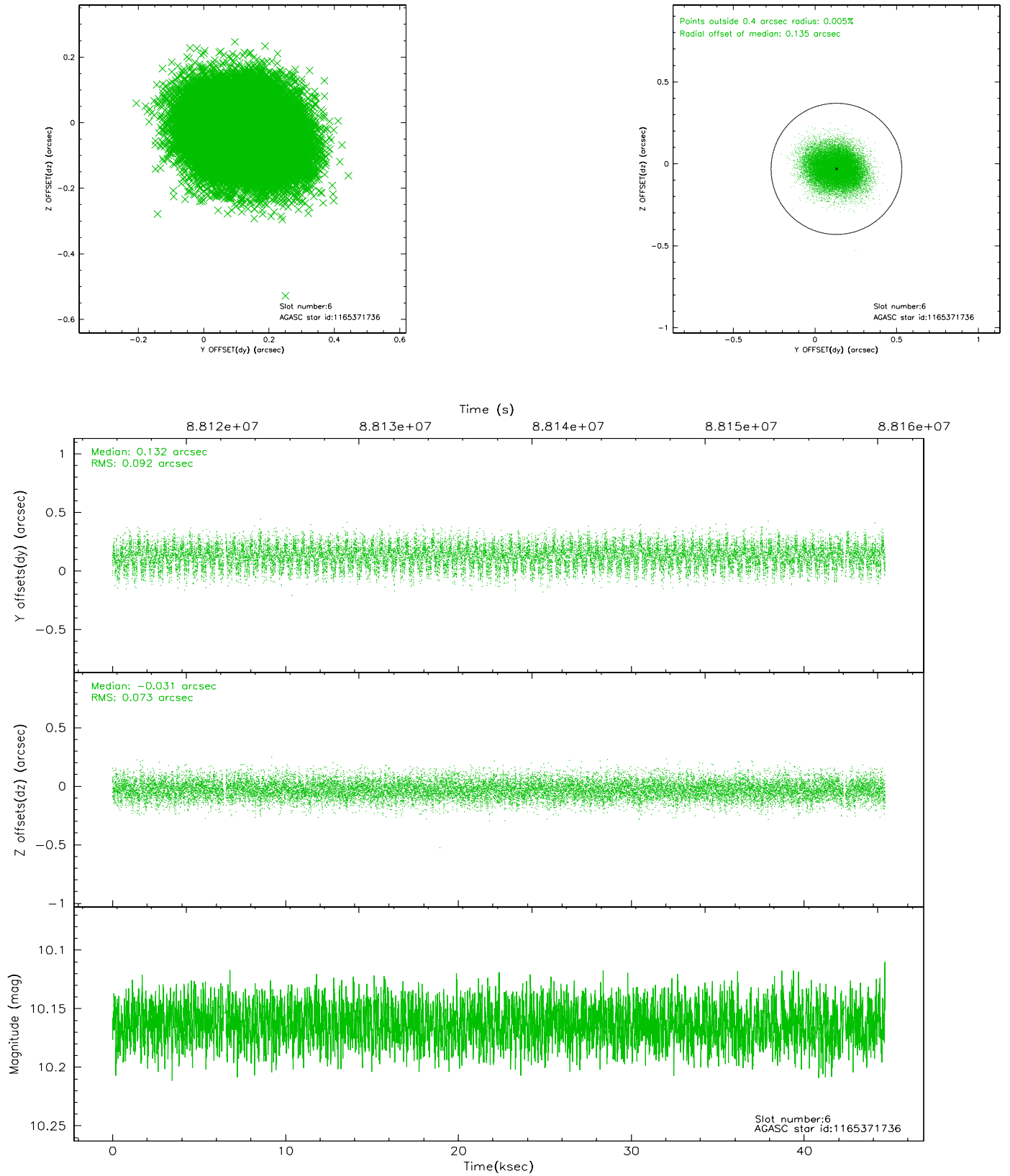
## 2.4.2 Slot 4



### 2.4.3 Slot 5

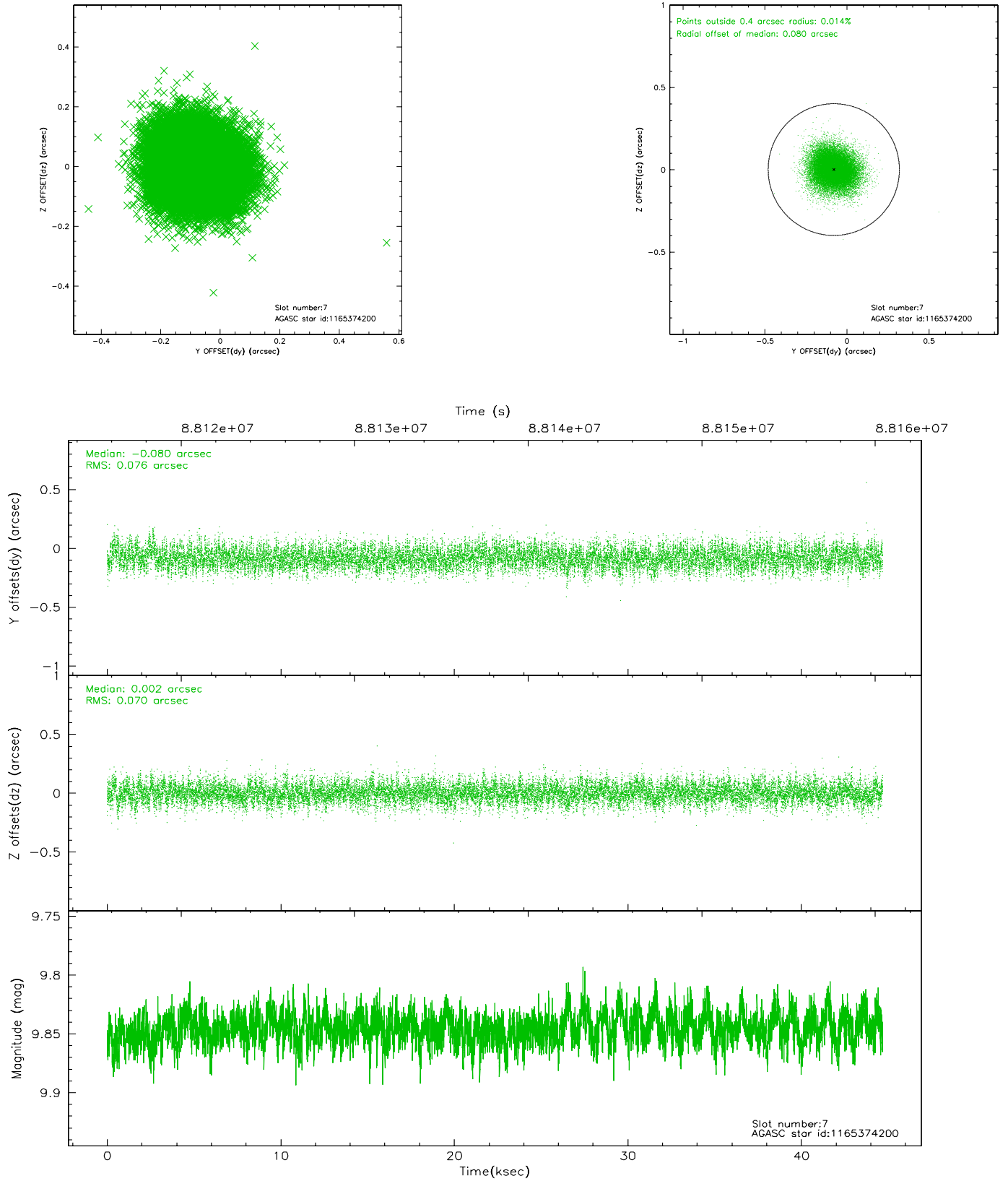


## 2.4.4 Slot 6



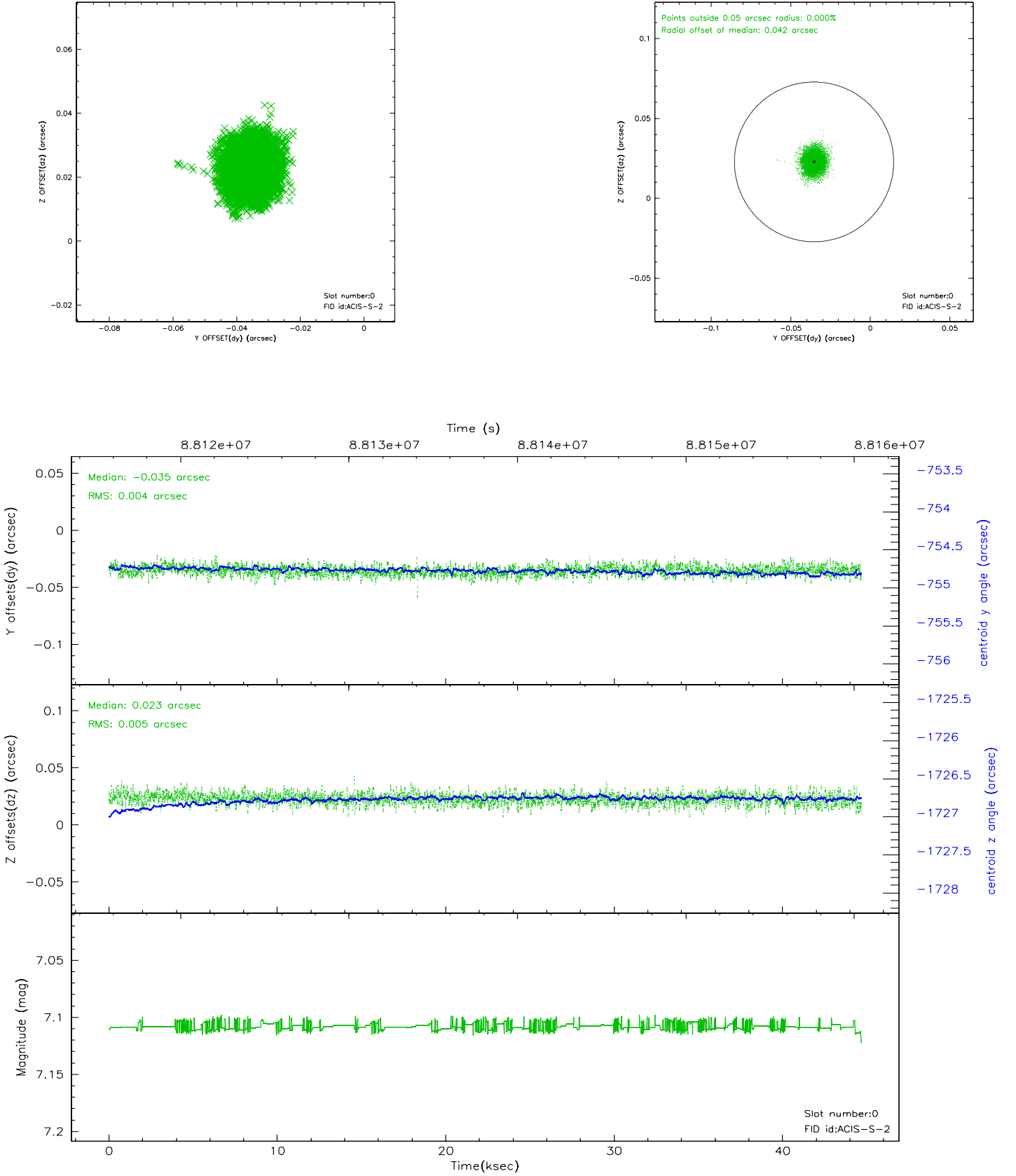


## 2.4.5 Slot 7

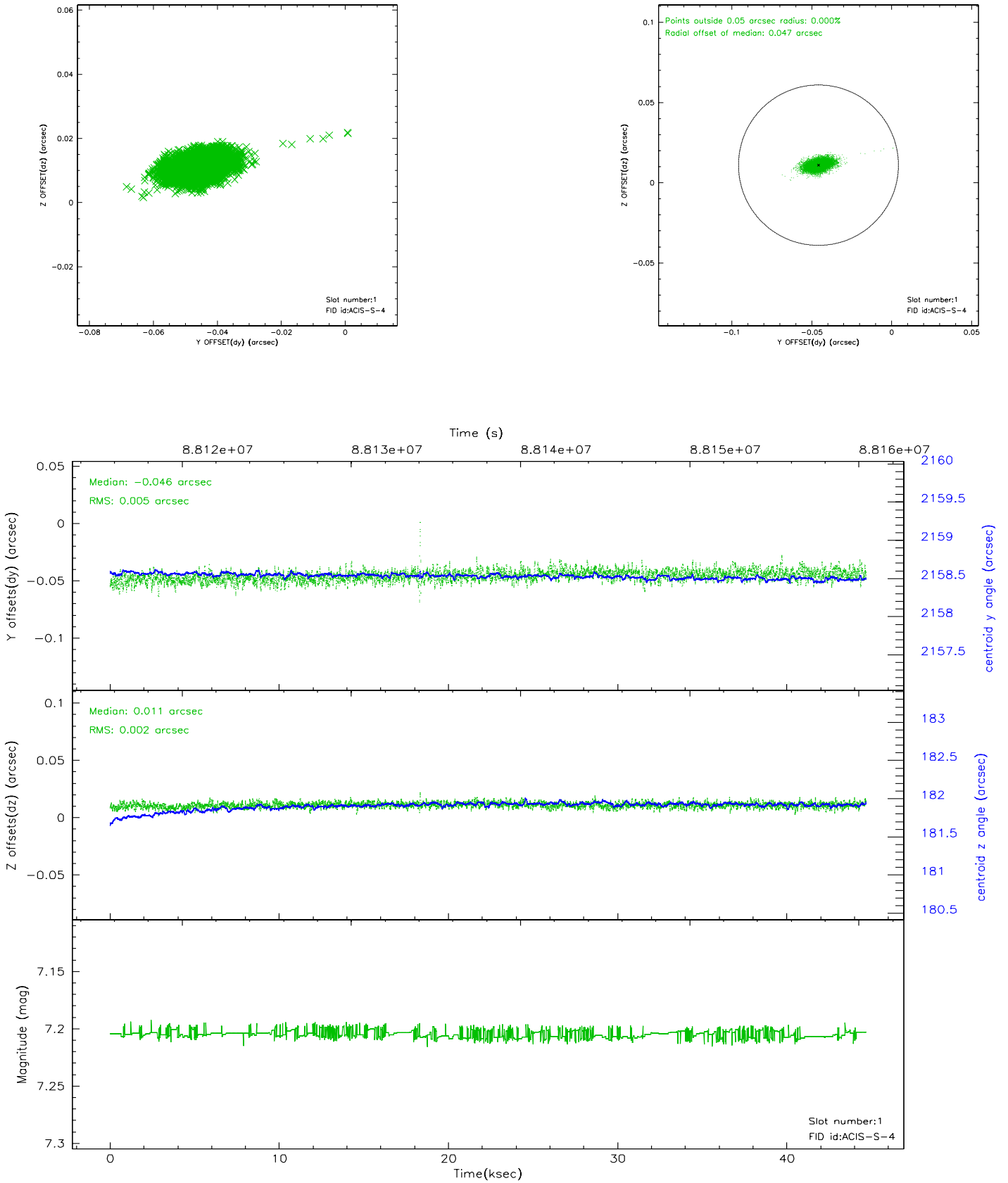


## 2.5 FID Slots

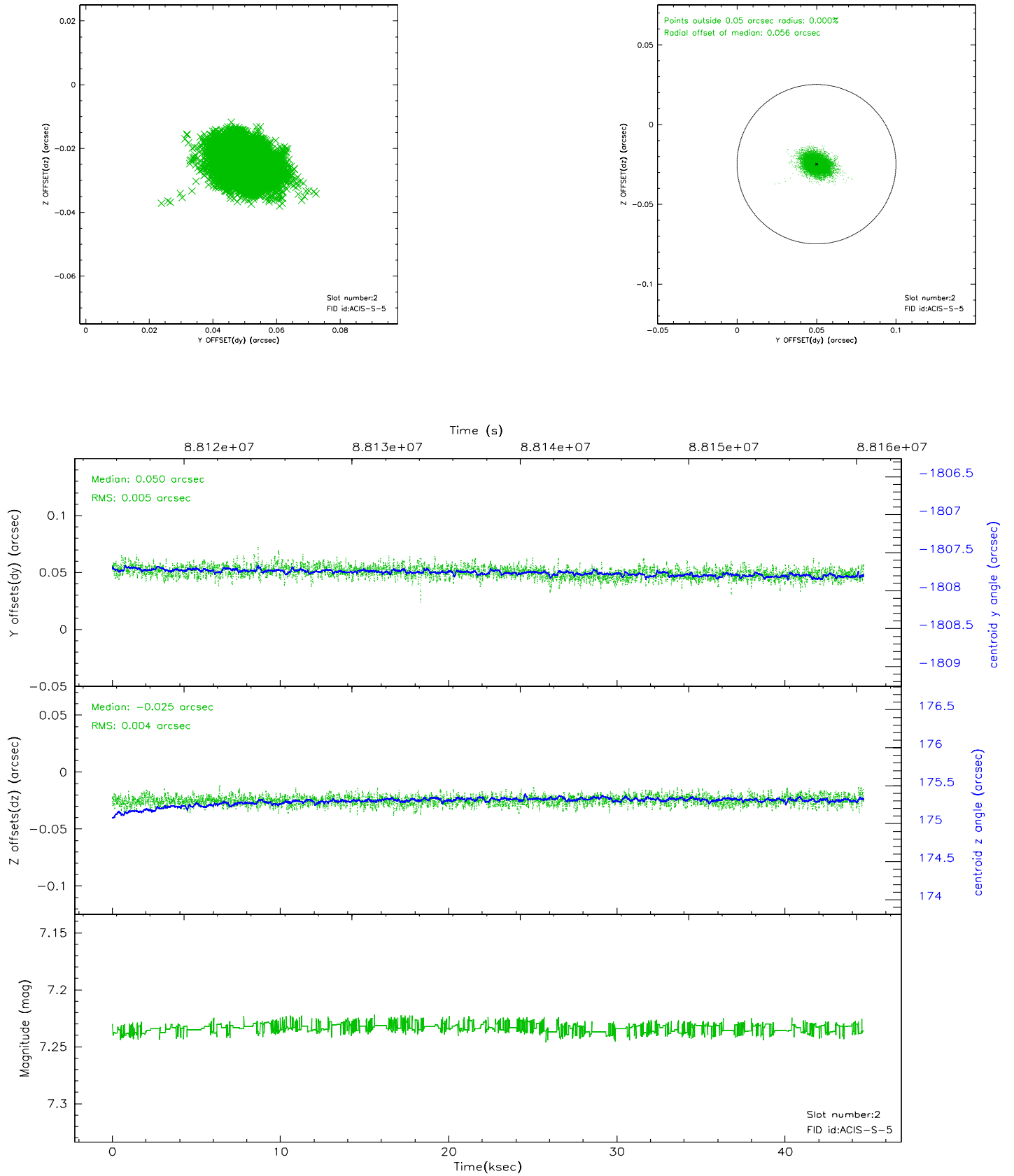
### 2.5.1 Slot 0



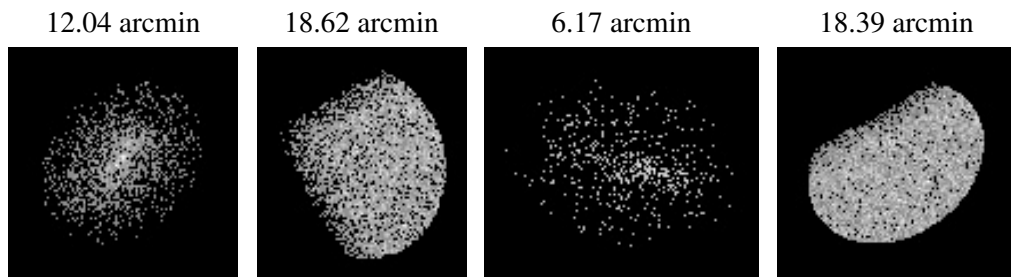
## 2.5.2 Slot 1



### 2.5.3 Slot 2



### 3 Point Sources



# A Summary

## A.1 Status

V&V Scientist	Jen Lauer
V&V Date (YYYY-MM-DD)	2007.06.12
V&V Edition	1
V&V Disposition and Status	OK
V&V Charge Time	43.83

## A.2 Comments

Spike in count rate from about 10 counts per second to about 40 counts per second between 20 and 25 ksec into the observation. Some of this time period is not included in the good time interval, and therefore is not in the Level 2 data products.