

V&V Reference Report

L2 ASCDS Version : 8.4.4

Observation 7647 - L2 Version 3
Chandra X-Ray Center

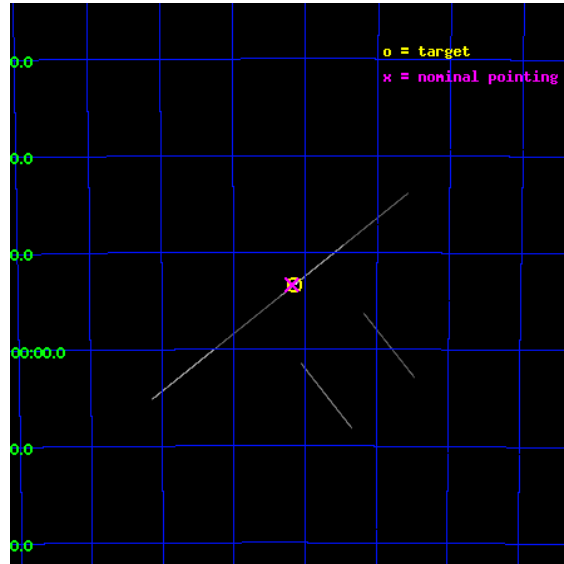
L2 Processing Date : Apr 22 2012

Contents

1	Front	2
2	OBI	3
2.1	OBI	3
2.1.1	Images	3
2.1.2	Bias	3
2.1.3	Parameters	4
2.1.4	Events	4
2.2	Compared Parameters	5
2.3	Aspect	6
2.4	Star Slots	9
2.4.1	Slot 3	9
2.4.2	Slot 4	10
2.4.3	Slot 5	11
2.4.4	Slot 6	12
2.4.5	Slot 7	13
2.5	FID Slots	14
2.5.1	Slot 0	14
2.5.2	Slot 1	15
2.5.3	Slot 2	16
A	Summary	17
A.1	Status	17
A.2	Comments	17

1 Front

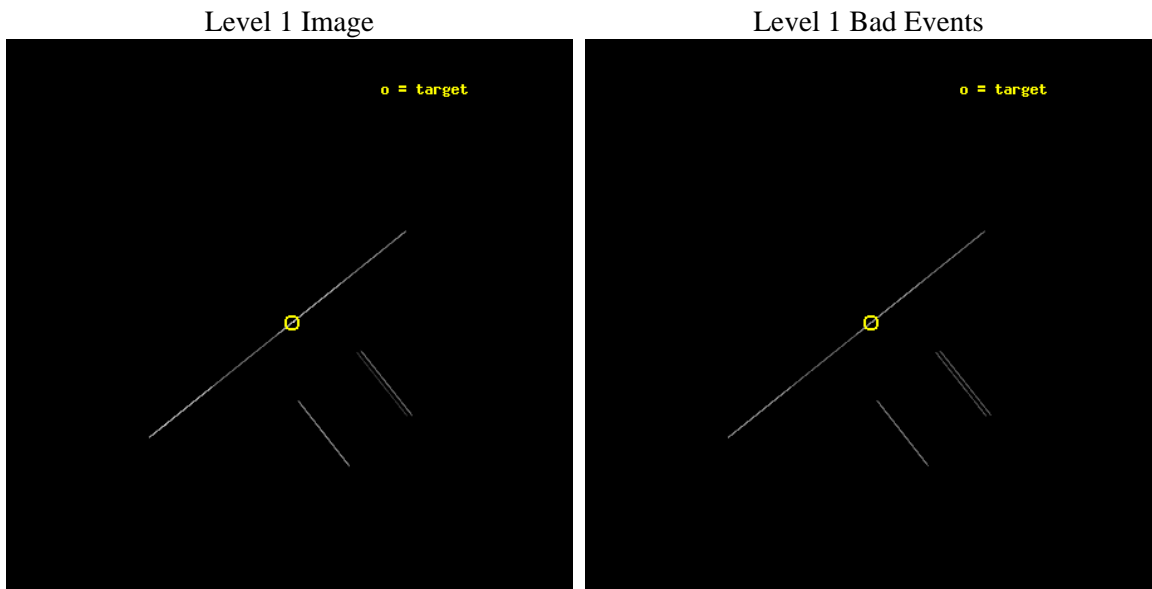
seq_num	500776	Sequence number
obs_id	7647	Observation id
title	Tiny Hiccups To Titanic Explosions: Tackling Transients in Anomalous X-ray Pulsars	Proposal title
observer	Professor Victoria Kaspi	Principal investigator
object	1E 1048.1-5937	Source name
ra_targ	162.537083	Observer's specified target RA [deg]
dec_targ	-59.889	Observer's specified target Dec [deg]
ra_nom	162.54669139497	Nominal RA [deg]
dec_nom	-59.889582334937	Nominal Dec [deg]
roll_nom	321.4723638352	Nominal Roll [deg]
revision	3	Processing version of data
ontime	20158.0	Sum of GTIs [s]
livetime	20079.2578125	Livetime [s]
ontime2	20158.0	Sum of GTIs [s]
ontime3	6599.9977368712	Sum of GTIs [s]
ontime5	20158.0	Sum of GTIs [s]
ontime6	6600.0073003173	Sum of GTIs [s]
ontime7	20158.0	Sum of GTIs [s]
ontime8	6600.0064945221	Sum of GTIs [s]
l2events	376047	Number of level 2 events



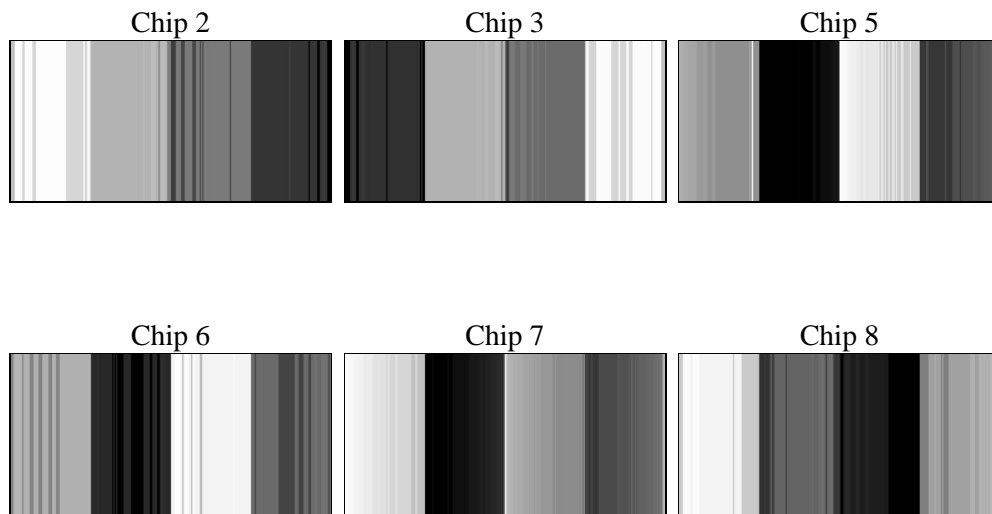
2 OBI

2.1 OBI

2.1.1 Images



2.1.2 Bias



2.1.3 Parameters

obi_num	0	Obi number	sched_exp_time	20000.000000	[s] Scheduled observation exposure time
ascdsver	8.4.4	Processing system revision	ontime	20158.0	Sum of GTIs [s]
caldbver	4.4.9	 	ontime2	20158.0	Sum of GTIs [s]
date	2012-04-22T20:26:12	Date and time of file creation	ontime3	6599.9977368712	Sum of GTIs [s]
revision	3	Processing version of data	ontime5	20158.0	Sum of GTIs [s]
			ontime6	6600.0073003173	Sum of GTIs [s]
			ontime7	20158.0	Sum of GTIs [s]
			ontime8	6600.0064945221	Sum of GTIs [s]
			l1events	533825	Number of level 1 events

2.1.4 Events

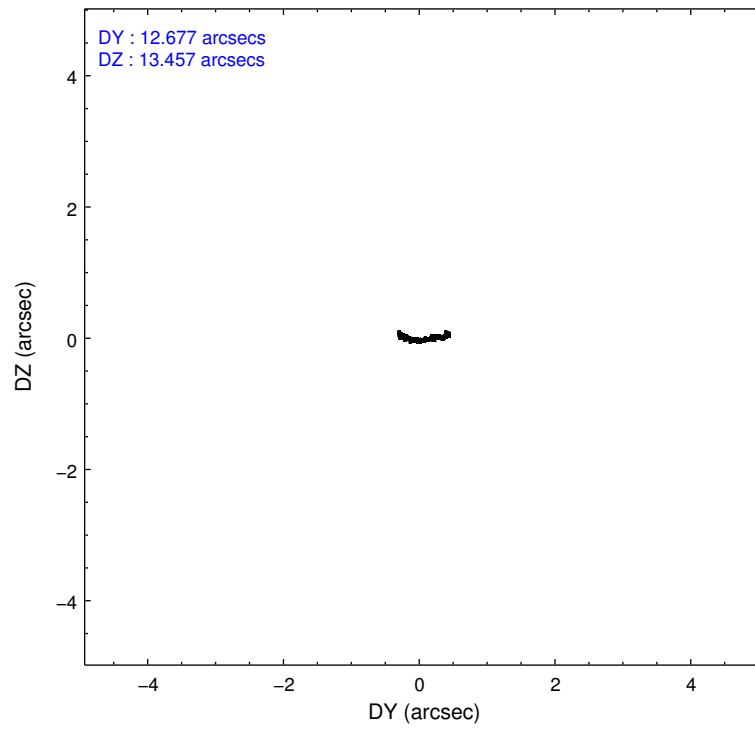
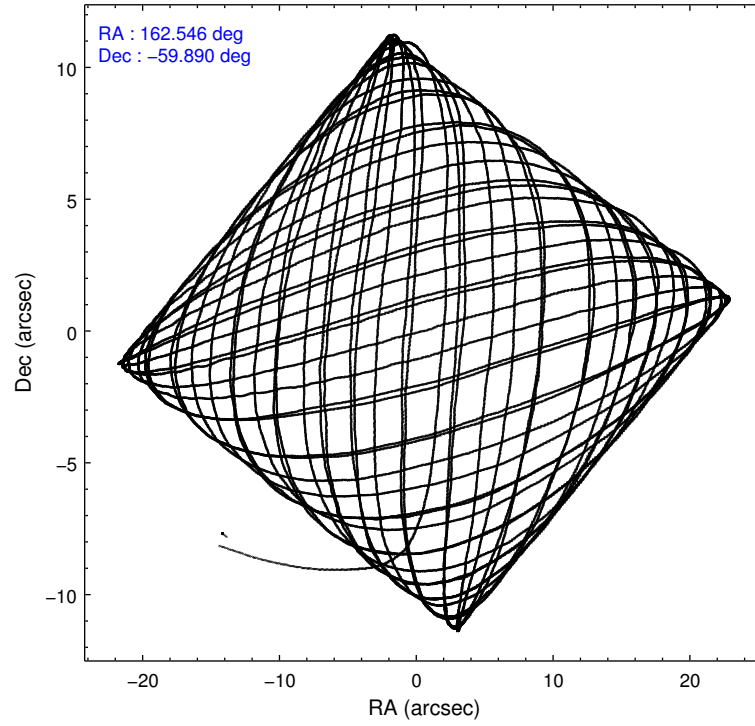
	ccd 2	ccd 3	ccd 5	ccd 6	ccd 7	ccd 8
level 1 events	40891	16311	194999	16166	232309	33149
rejected events	9154	4785	26352	4789	29364	8277
rejected %	22%	29%	13%	29%	12%	24%

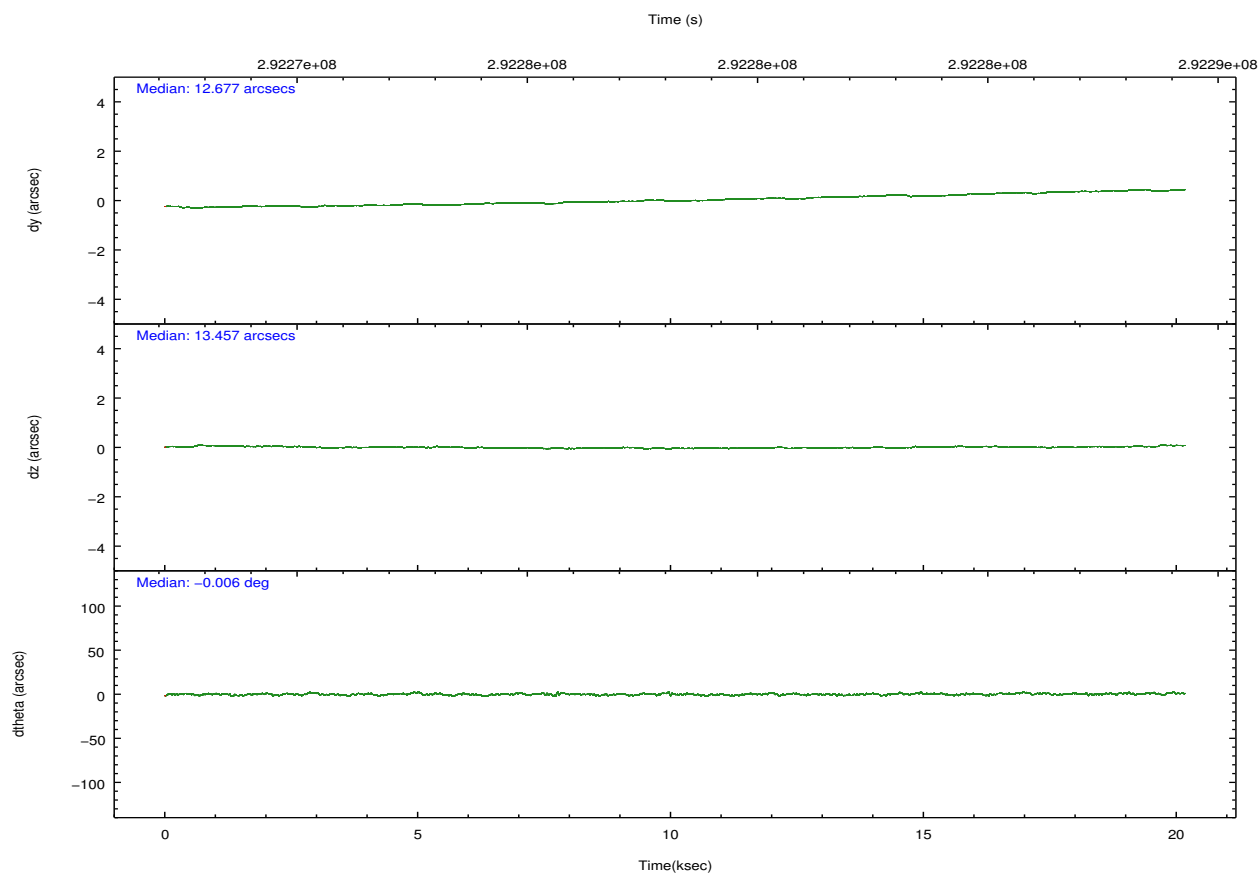
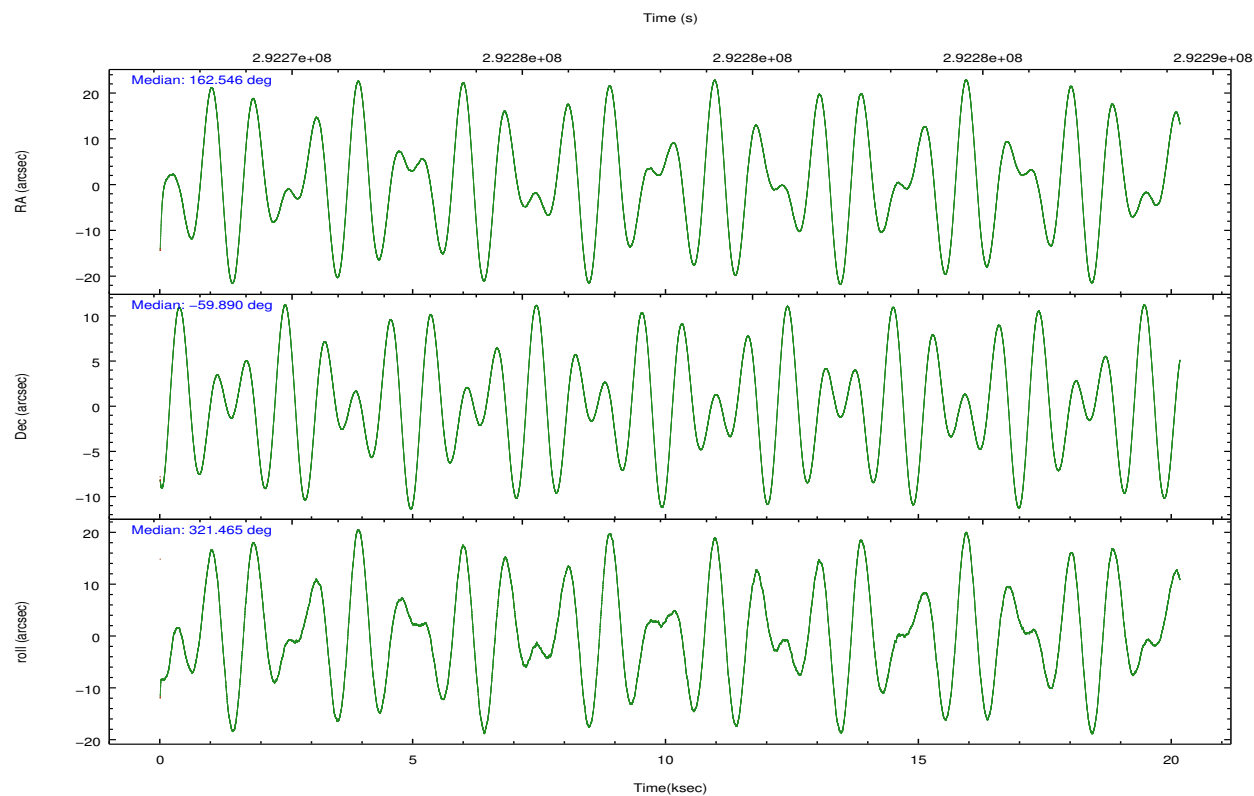
	ccd 2	ccd 3	ccd 5	ccd 6	ccd 7	ccd 8
grade 0 events	5108	1935	37783	1648	32706	5874
	12%	11%	19%	10%	14%	17%
grade 1 events	149	57	312	59	478	129
	0%	0%	0%	0%	0%	0%
grade 2 events	12748	4977	50453	5096	55936	9073
	31%	30%	25%	31%	24%	27%
grade 3 events	4392	1816	3644	1631	18405	3291
	10%	11%	1%	10%	7%	9%
grade 4 events	4405	1587	3611	1554	17817	3063
	10%	9%	1%	9%	7%	9%
grade 5 events	7413	3112	18249	3118	23069	4397
	18%	19%	9%	19%	9%	13%
grade 6 events	6676	2827	80947	3060	83898	7322
	16%	17%	41%	18%	36%	22%
grade 7 events	0	0	0	0	0	0
	0%	0%	0%	0%	0%	0%

2.2 Compared Parameters

Parameter	Planned	Actual	Parameter	Planned	Actual
Instrument	ACIS	ACIS	Obspar format version number	7	7
Detector	ACIS-235678	ACIS-235678	Obspar file type	PREDICTED	ACTUAL
Grating	NONE	NONE	Obspar update status	NONE	UPDATED
Data mode	CC33_FAINT	CC33_FAINT	Number of optional ACIS chips dropped	0	0
Observation mode	POINTING	POINTING	On-chip summing requested	N	N
[deg] Pointing RA	162.492679	162.5466913949724	Subarray requested	NONE	NONE
[deg] Pointing Dec	-59.885887	-59.88958233493697	Alternating exposures requested	N	N
[deg] Pointing Roll	321.269010	321.4723638352036	[s] Primary exposure time	0.000000	0
[mm] SIM focus pos	-0.684267	-0.6828225247311905			
[mm] SIM defocus	0	0.001444936568705701			
[mm] SIM translation stage pos	-190.132523	-190.1425803651734			
[mm] SIM translation stage offset	0	0.01005778216563158			
[s] Observation start time (MET)	292268301.184000	292267177.82293			
Observation start date	2007-04-06T17:37:16	2007-04-06T17:19:37			
[s] Observation end time (MET)	292288301.184000	292289205.58648			
Observation end date	2007-04-06T23:10:36	2007-04-06T23:26:45			
Read mode	CONTINUOUS	CONTINUOUS			

2.3 Aspect



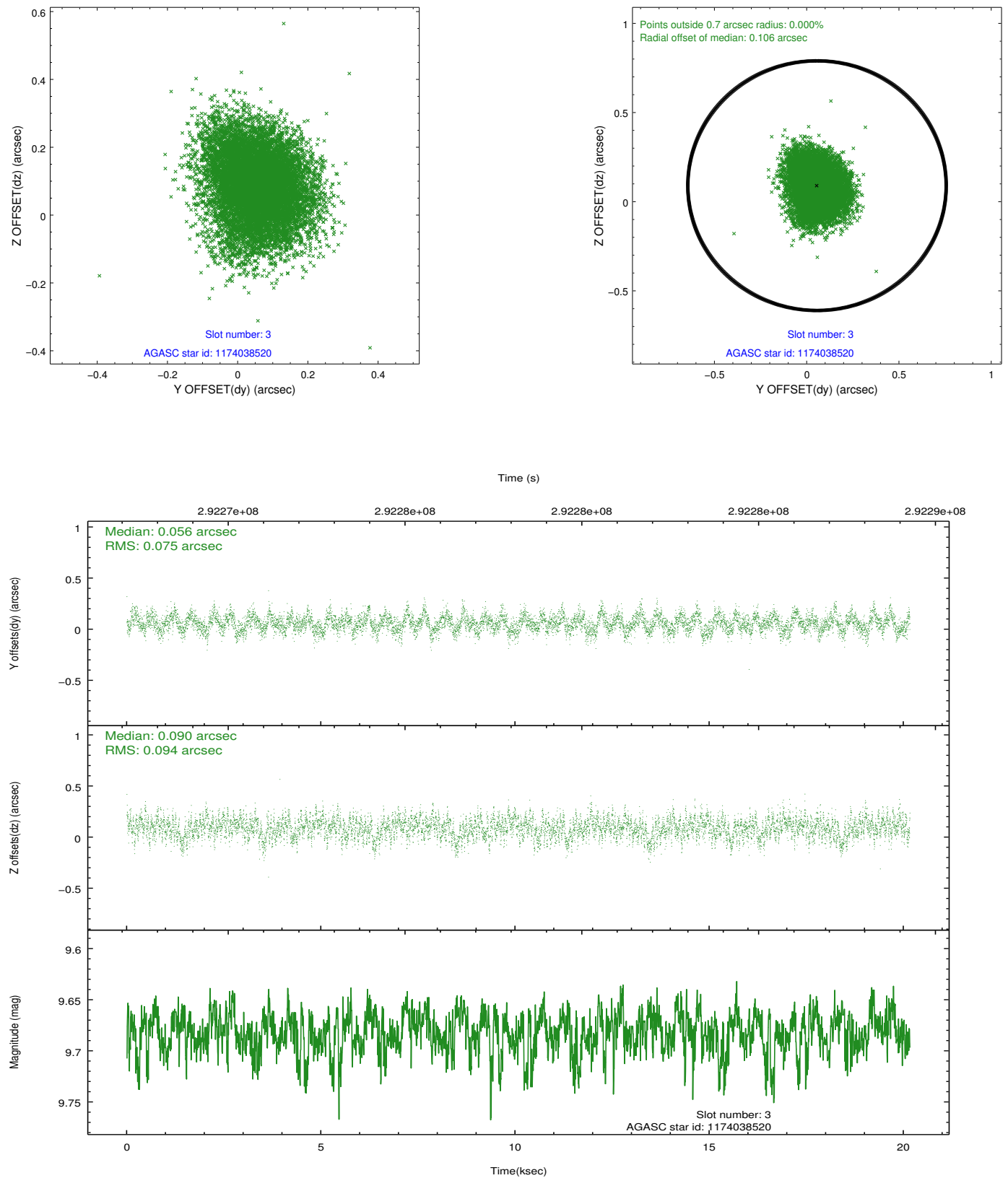


Slot Statistics

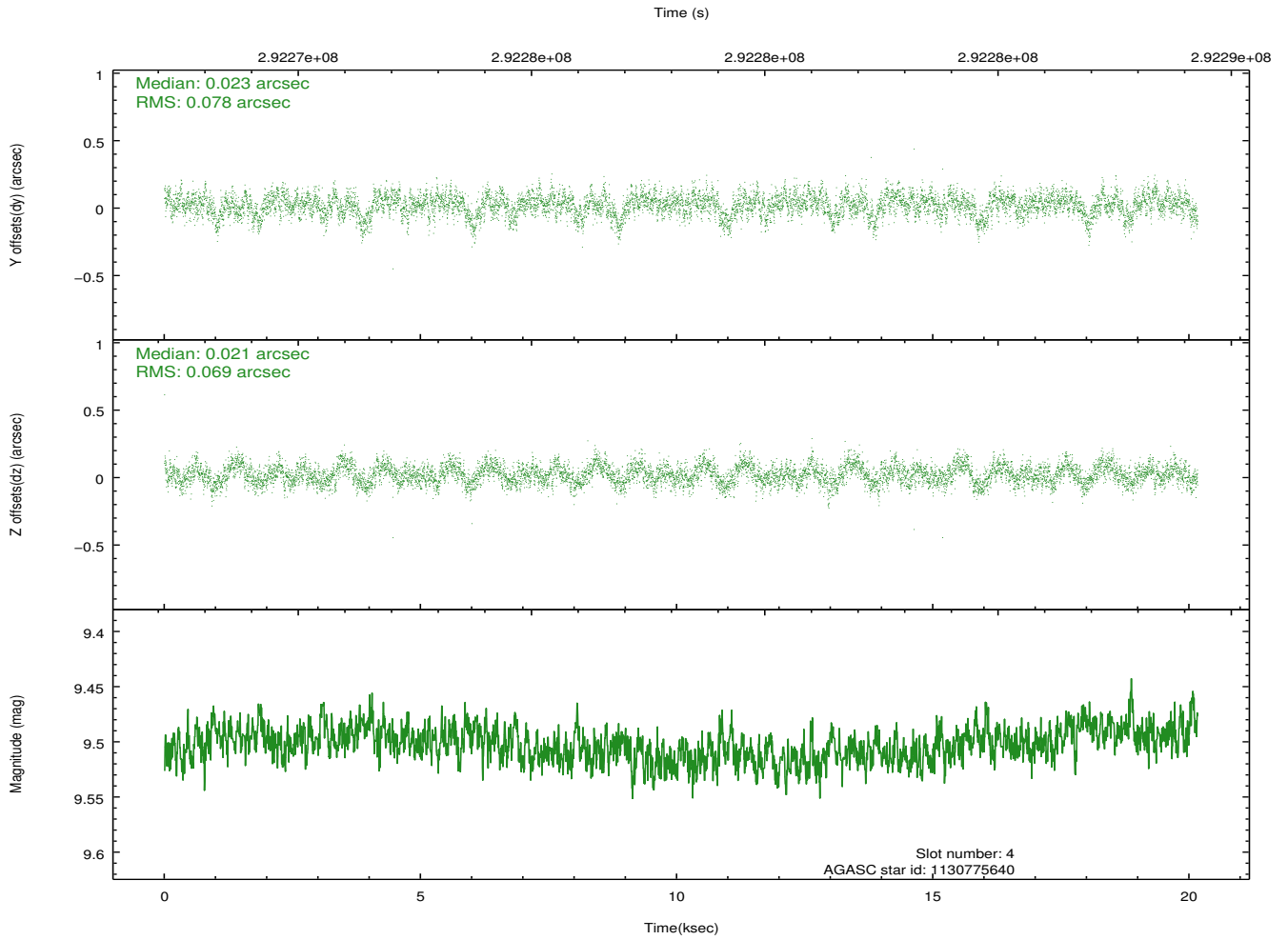
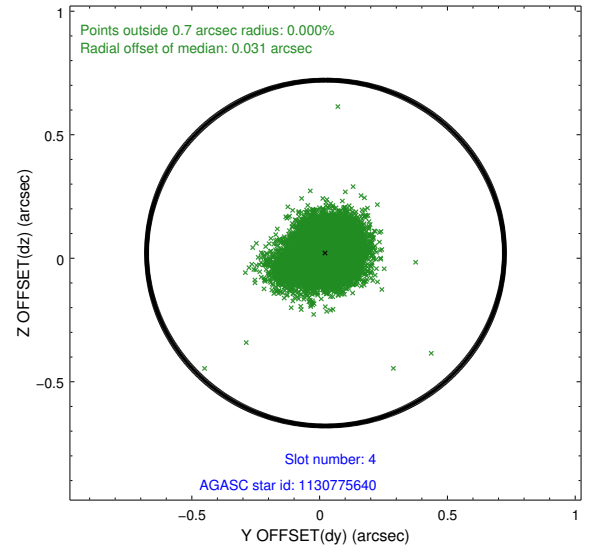
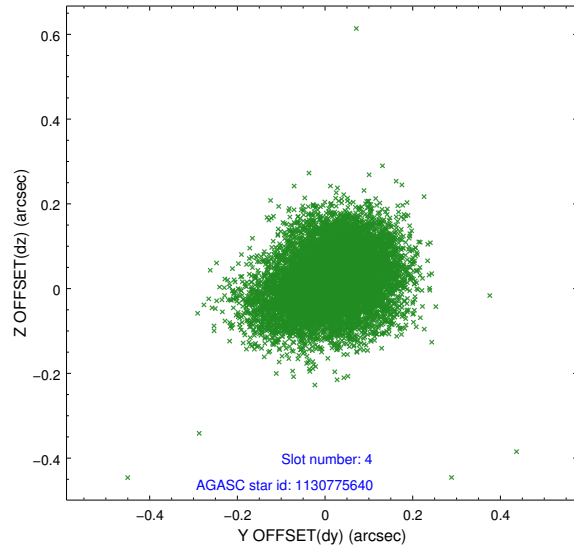
slot	status	id	mag	n_pts	med_dy	med_dz	dr1	dr2	ra	dec	mean_y	mean_z
0	FID	ACIS-S-1	7.18	4919	-0.006	-0.024	0.012	0.022	0.000000	0.000000	930.42	-1730.40
1	FID	ACIS-S-4	7.19	4919	0.058	-0.012	0.010	0.018	0.000000	0.000000	2147.98	173.60
2	FID	ACIS-S-6	7.33	4918	-0.076	0.046	0.009	0.016	0.000000	0.000000	396.51	811.21
3	GUIDE	1174038520	9.68	9824	0.056	0.090	0.128	0.208	161.745605	-60.289353	-125.76	-1972.90
4	GUIDE	1130775640	9.50	9826	0.023	0.021	0.109	0.180	164.043965	-59.930364	2303.45	1600.23
5	GUIDE	1130642000	7.91	9835	-0.084	-0.097	0.069	0.110	162.836255	-59.743891	167.67	787.46
6	GUIDE	1130767056	8.79	9761	0.052	0.002	0.080	0.123	164.277994	-59.801070	2357.96	2227.08
7	GUIDE	1174020728	8.15	9835	-0.041	-0.007	0.060	0.096	162.364714	-60.294672	743.45	-1290.75

2.4 Star Slots

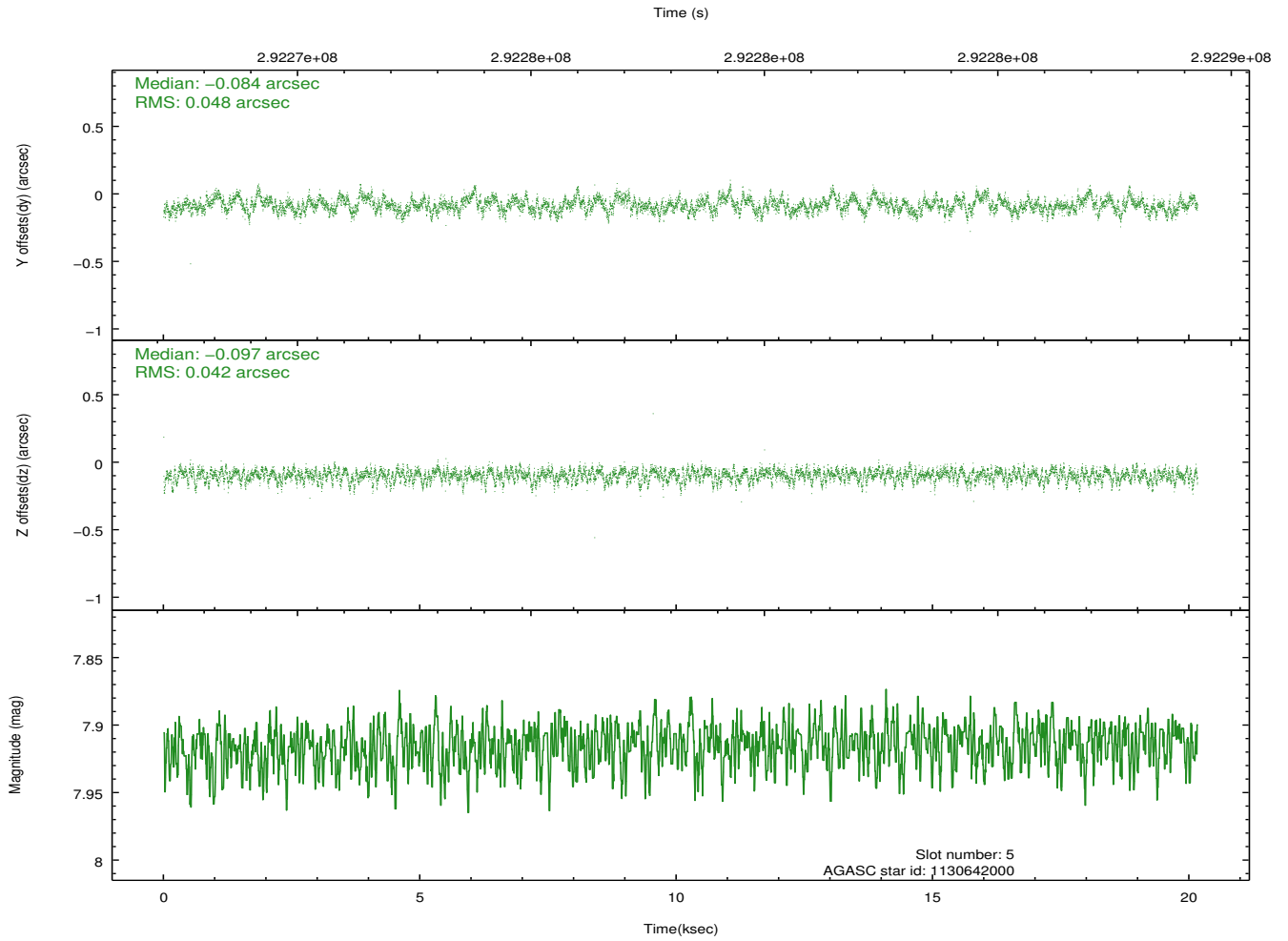
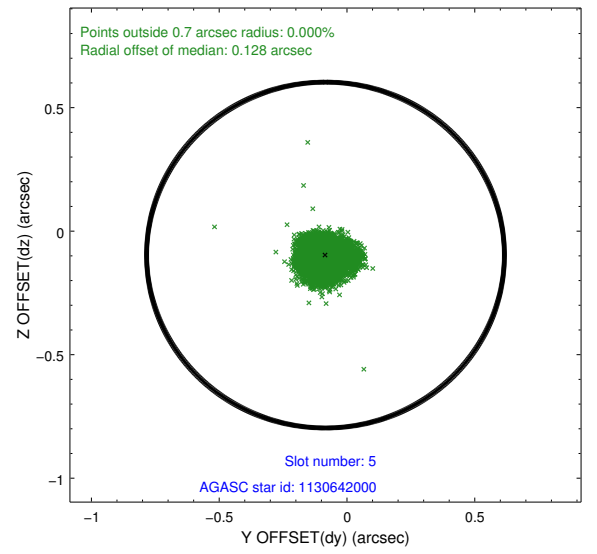
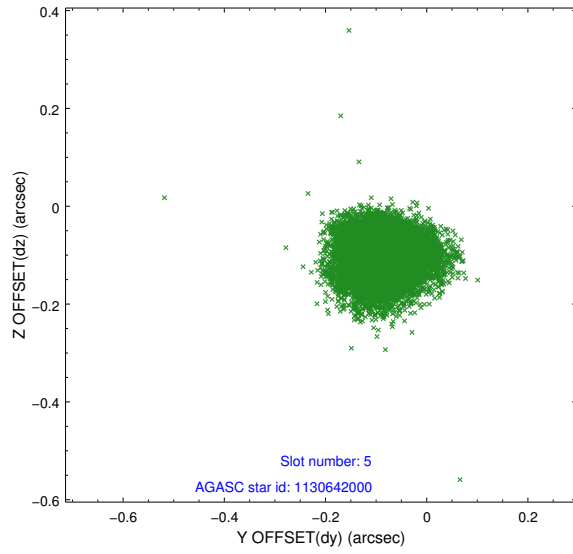
2.4.1 Slot 3



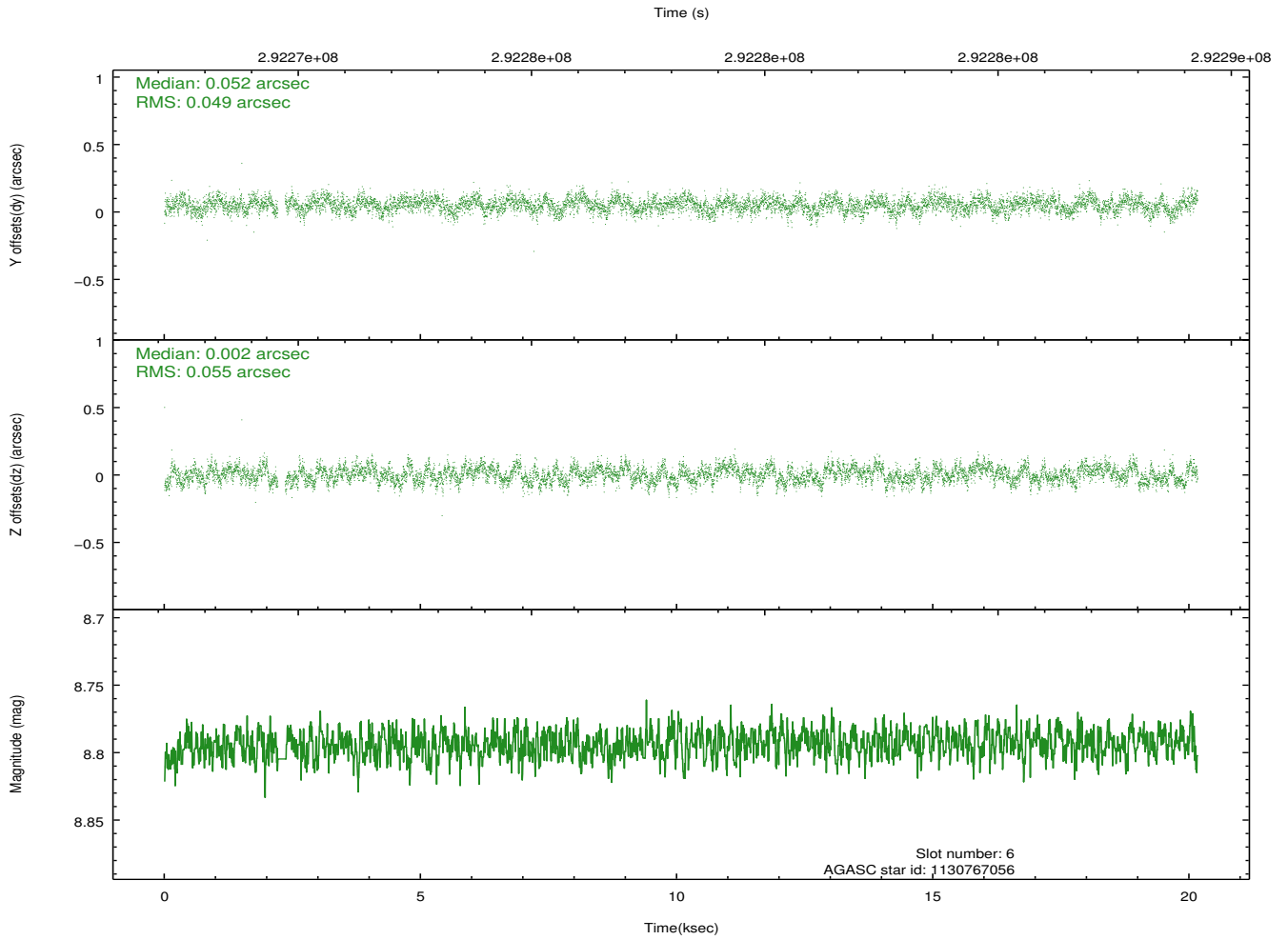
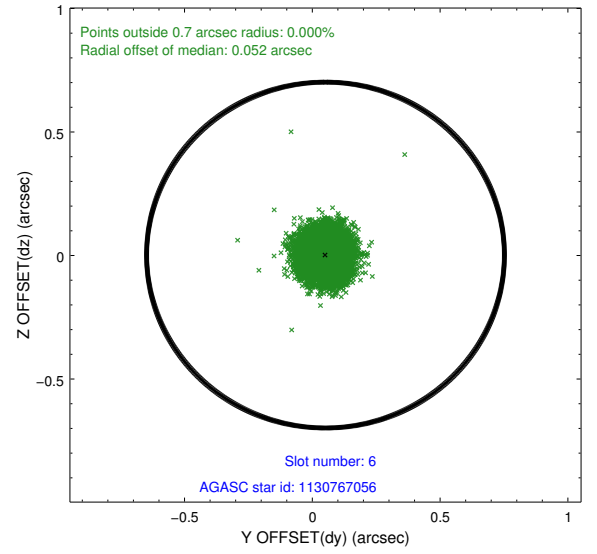
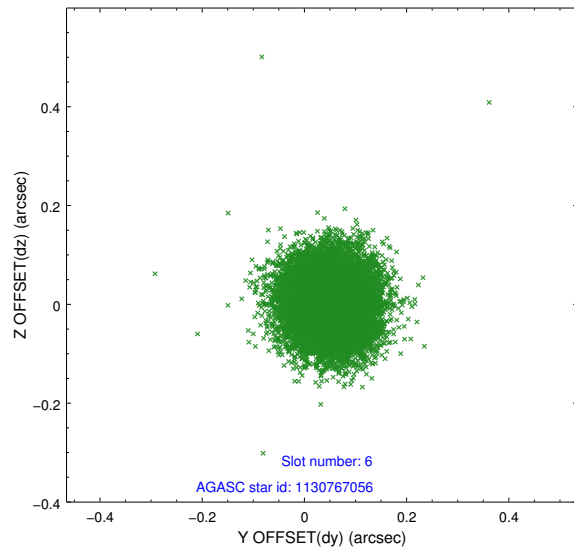
2.4.2 Slot 4



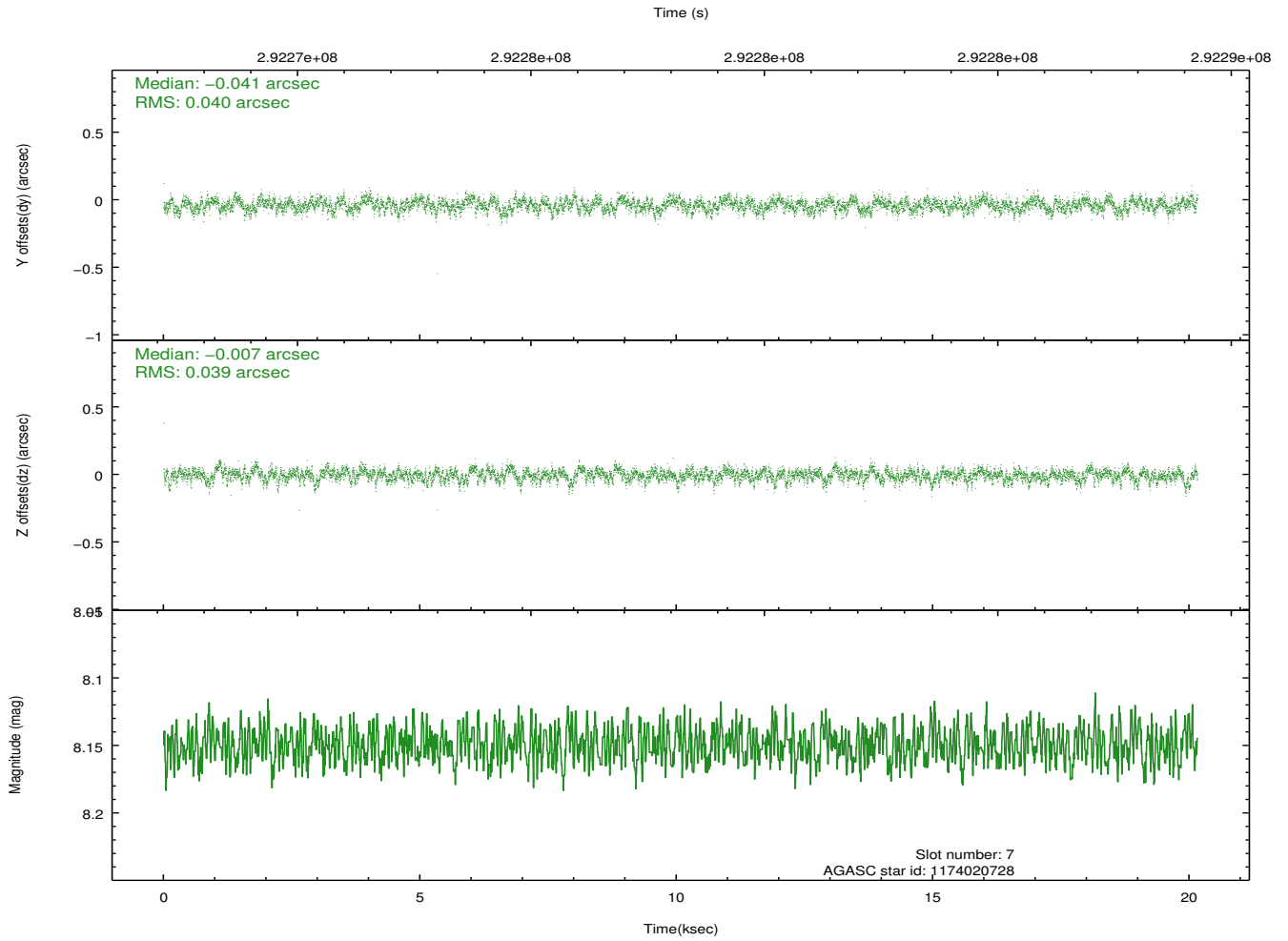
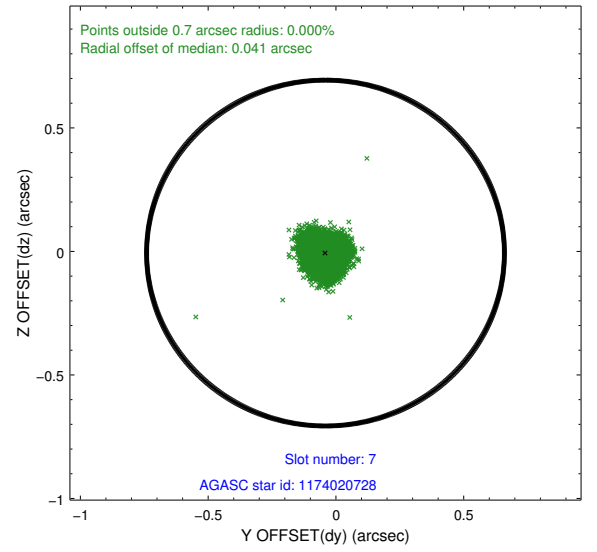
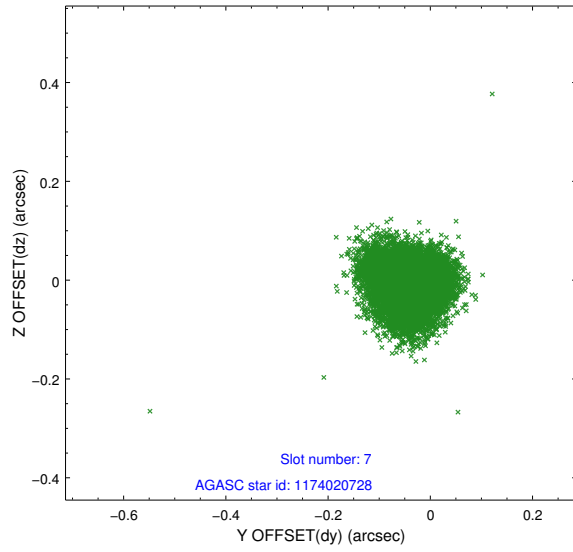
2.4.3 Slot 5



2.4.4 Slot 6

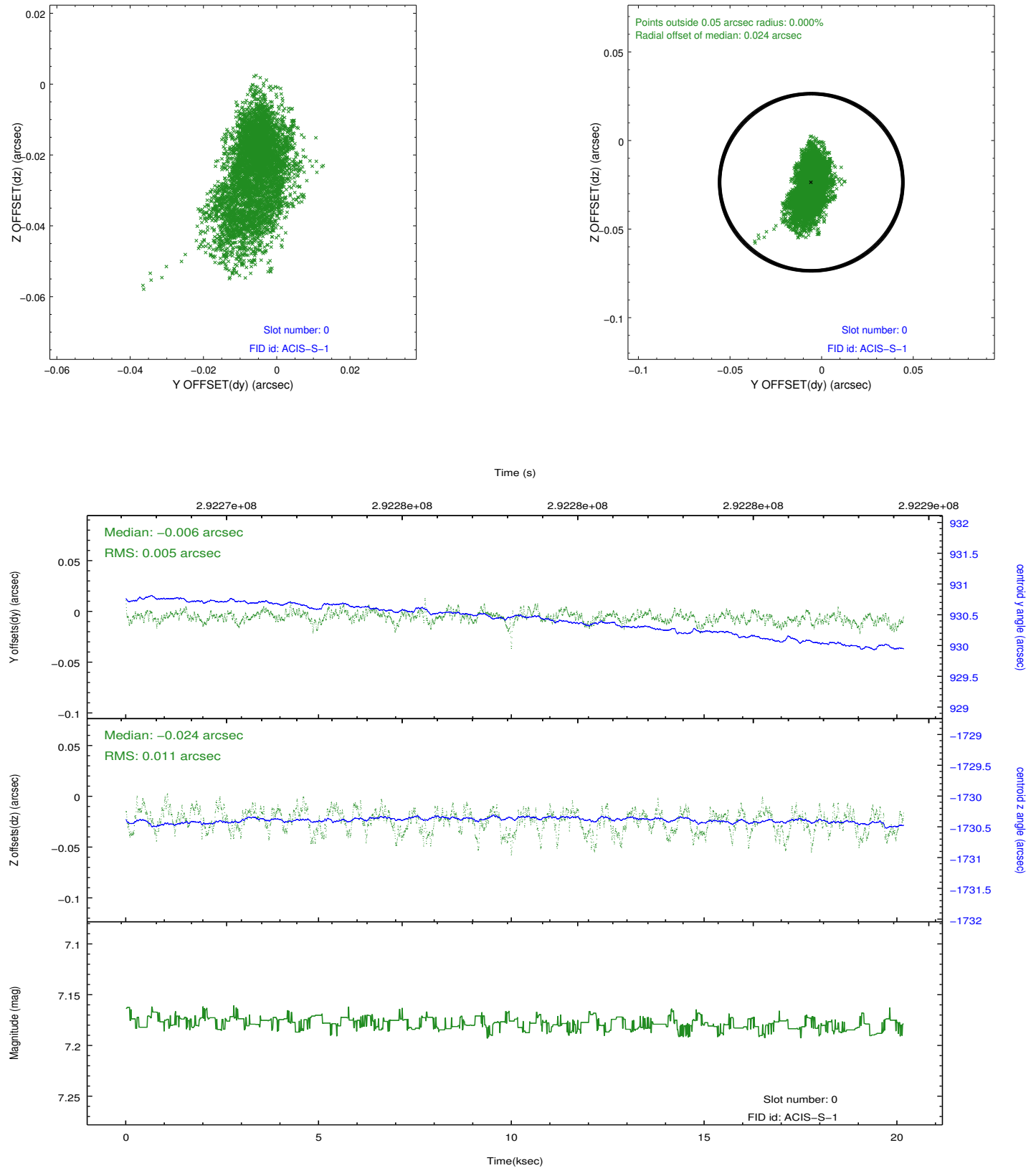


2.4.5 Slot 7

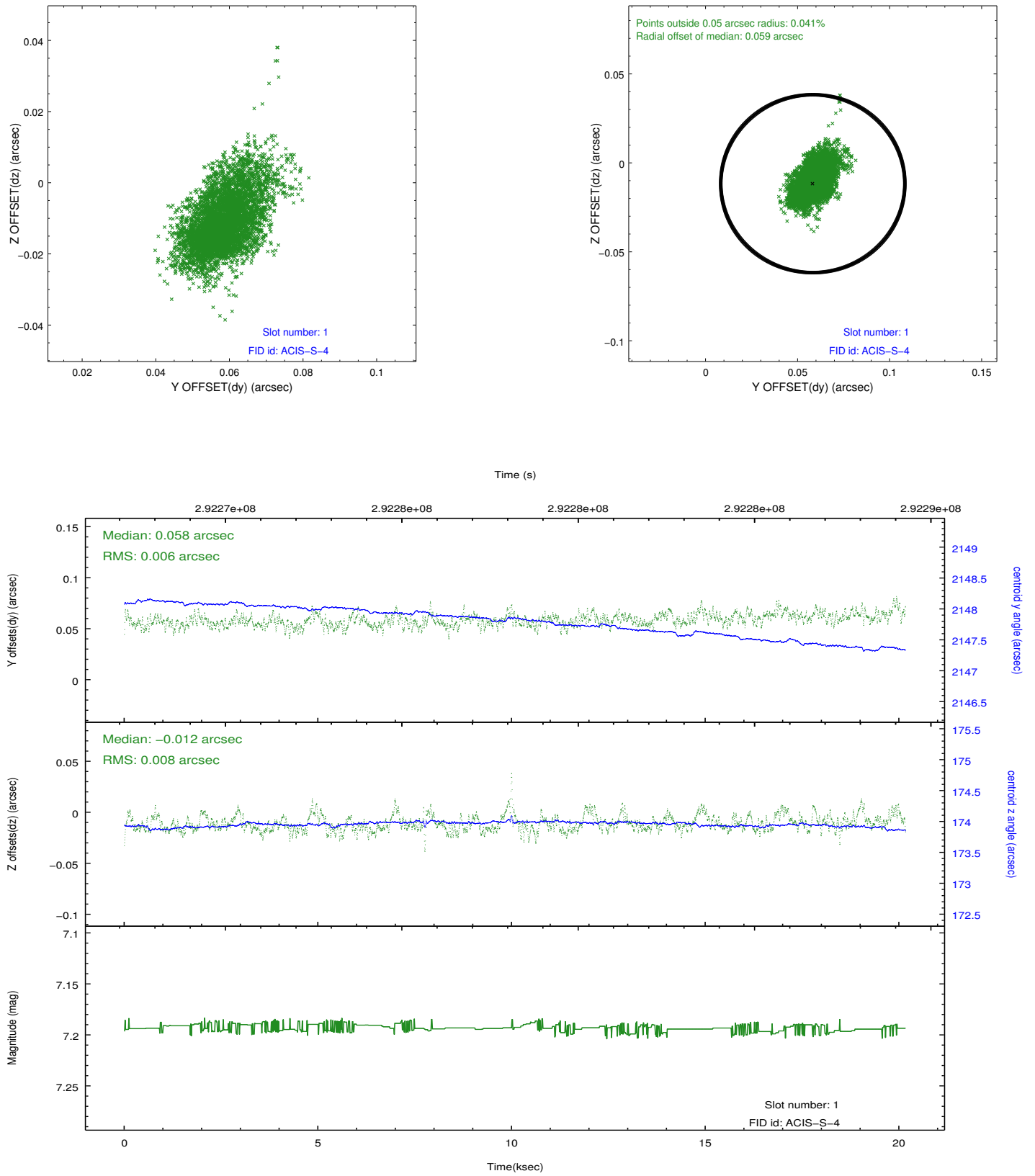


2.5 FID Slots

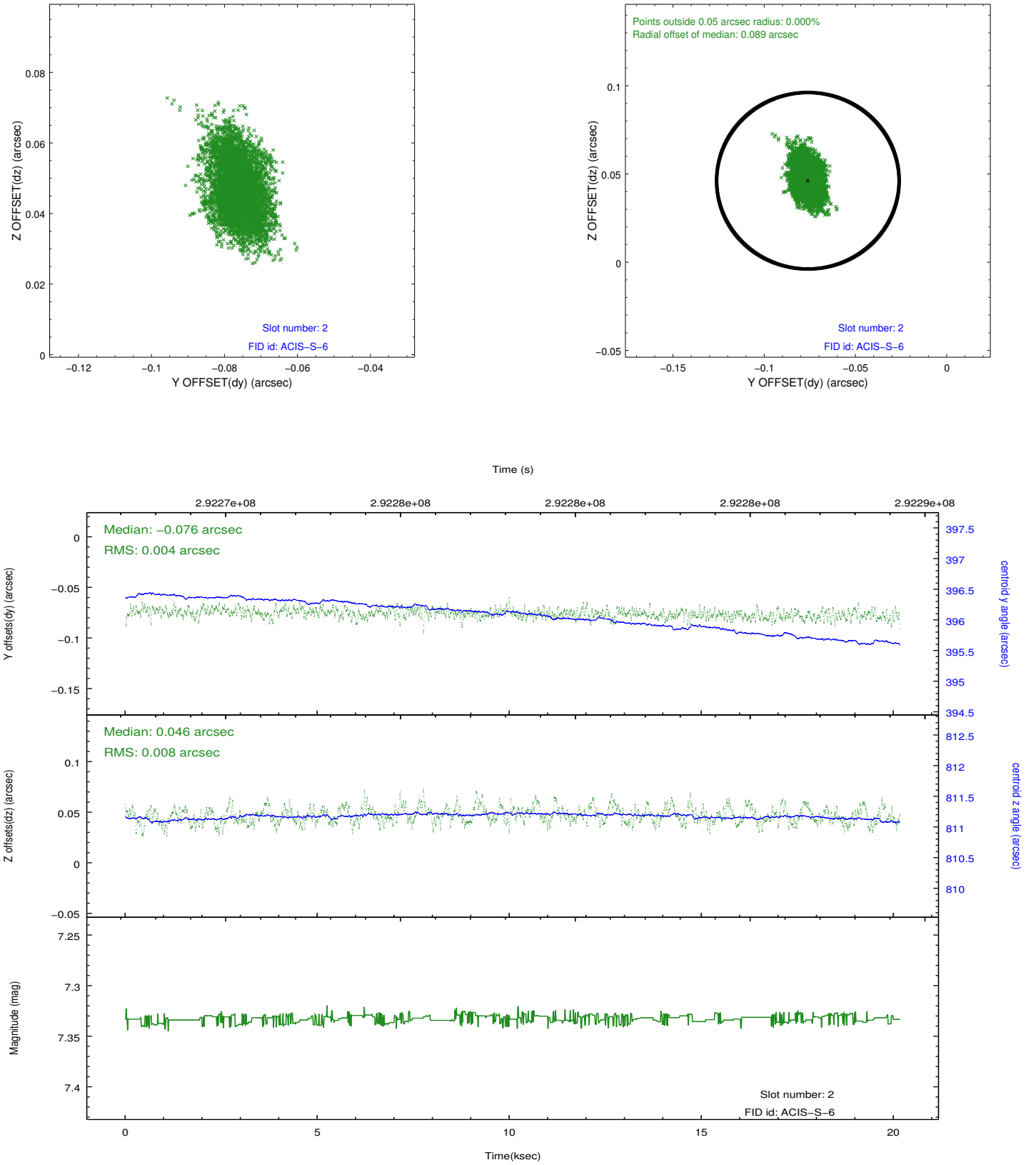
2.5.1 Slot 0



2.5.2 Slot 1



2.5.3 Slot 2



A Summary

A.1 Status

V&V Scientist	Joy Nichols
V&V Date (YYYY-MM-DD)	2012.04.23
V&V Edition	1
V&V Disposition and Status	OK
V&V Charge Time	20.158

A.2 Comments

IMPORTANT INFORMATION FROM THE OBSERVATORY: An ACIS anomaly occurred during this observation. CCD chips 3, 6, and 8 stopped reporting events after 6600 seconds, while the other CCD chips continued to report events for 20.158 ksec. The data on chips 2, 5, and 7 appear normal and the ACIS team believes the data on these chips is not affected by the anomaly. Since the source is on chip 7, the data should satisfy science requirements.