

V&V Reference Report

L2 ASCDS Version : 7.6.10

Observation 757 - L2 Version 001
Chandra X-Ray Center

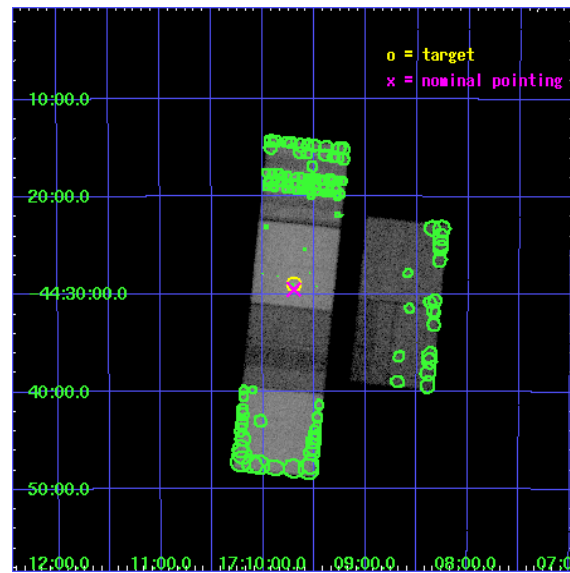
L2 Processing Date : Jun 2 2007

Contents

1	Front	2
2	OBI	3
2.1	OBI	3
2.1.1	Images	3
2.1.2	Bias	3
2.1.3	Parameters	4
2.1.4	Events	4
2.2	Compared Parameters	5
2.3	Aspect	6
2.4	Star Slots	9
2.4.1	Slot 3	9
2.4.2	Slot 4	10
2.4.3	Slot 5	11
2.4.4	Slot 6	12
2.4.5	Slot 7	13
2.5	FID Slots	14
2.5.1	Slot 0	14
2.5.2	Slot 1	15
2.5.3	Slot 2	16
3	Point Sources	17
A	Summary	18
A.1	Status	18
A.2	Comments	18

1 Front

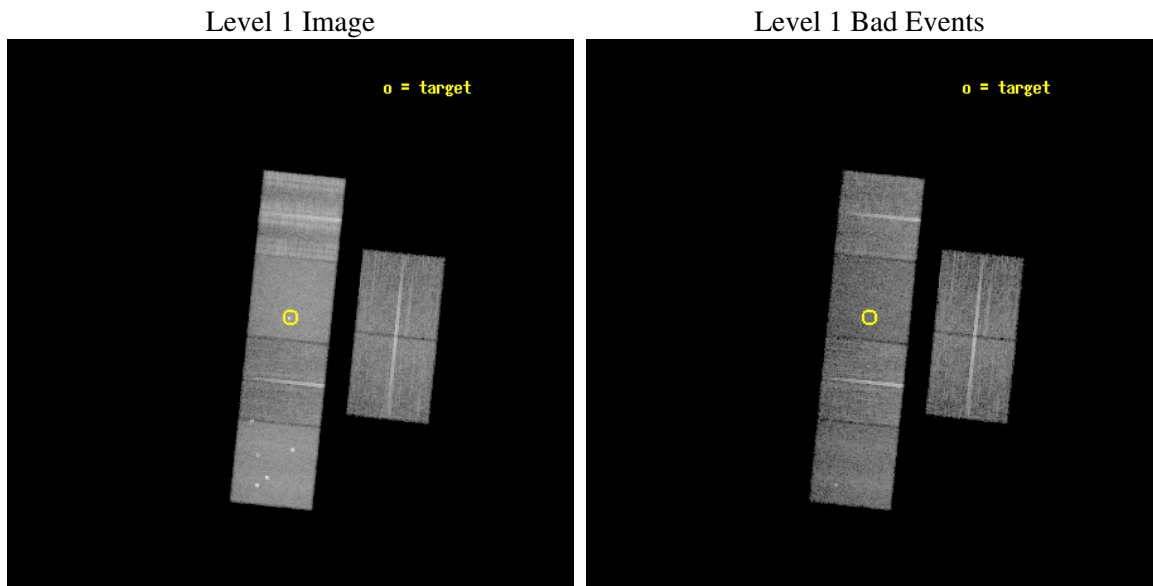
seq_num	500053
obs_id	757
title	TEMPORAL, SPECTRAL, AND SPATIAL CHARACTERIZATION OF PSR B1706-44
observer	PROF. John Finley
object	PSR B1706-44
dtcycle	0
cycle	P
ra_targ	257.425833
dec_targ	-44.4825
ra_nom	257.42475714797
dec_nom	-44.492361166539
roll_nom	275.8982328087
revision	3
ontime	14441.60001345
livetime	14258.731778392
ontime2	14441.60001345
ontime3	14438.359053209
ontime5	14441.60001345
ontime6	14441.60001345
ontime7	14441.60001345
ontime8	14441.60001345
l2events	281345



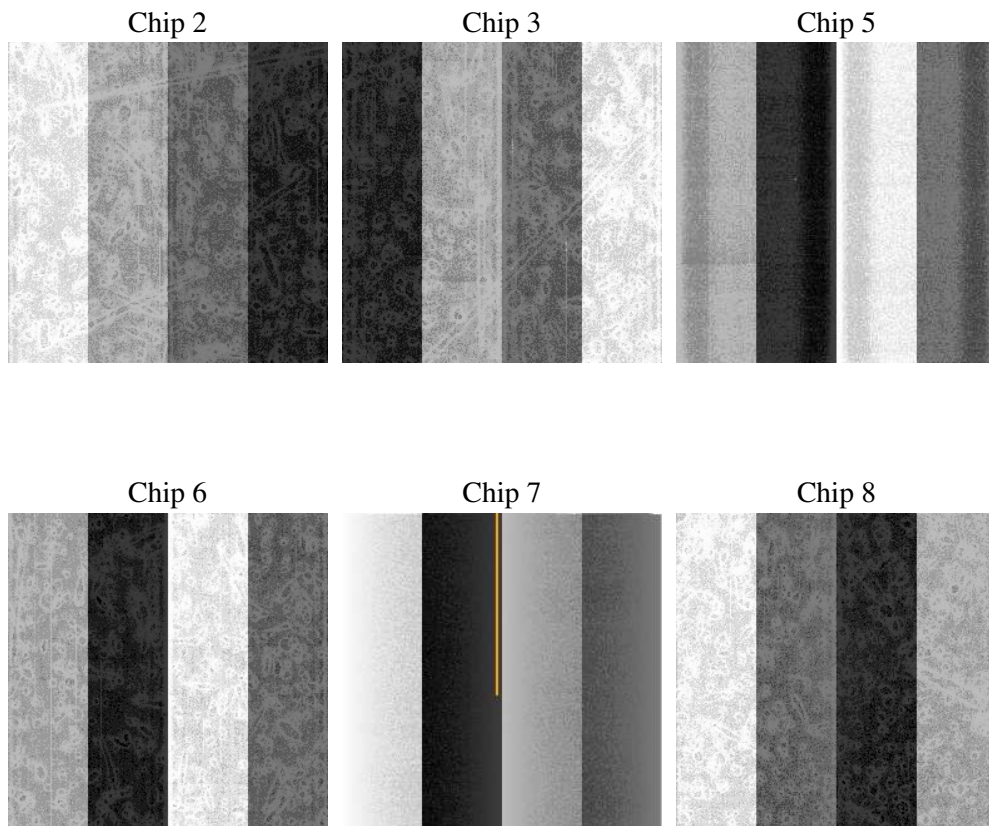
2 OBI

2.1 OBI

2.1.1 Images



2.1.2 Bias



2.1.3 Parameters

obi_num	0
ascdsver	7.6.10
caldsver	3.4.0
date	2007-06-02T11:23:53
revision	3

sched_exp_time	14490.000000
ontime	14441.60001345
ontime2	14441.60001345
ontime3	14438.359053209
ontime5	14441.60001345
ontime6	14441.60001345
ontime7	14441.60001345
ontime8	14441.60001345
l1events	798014

2.1.4 Events

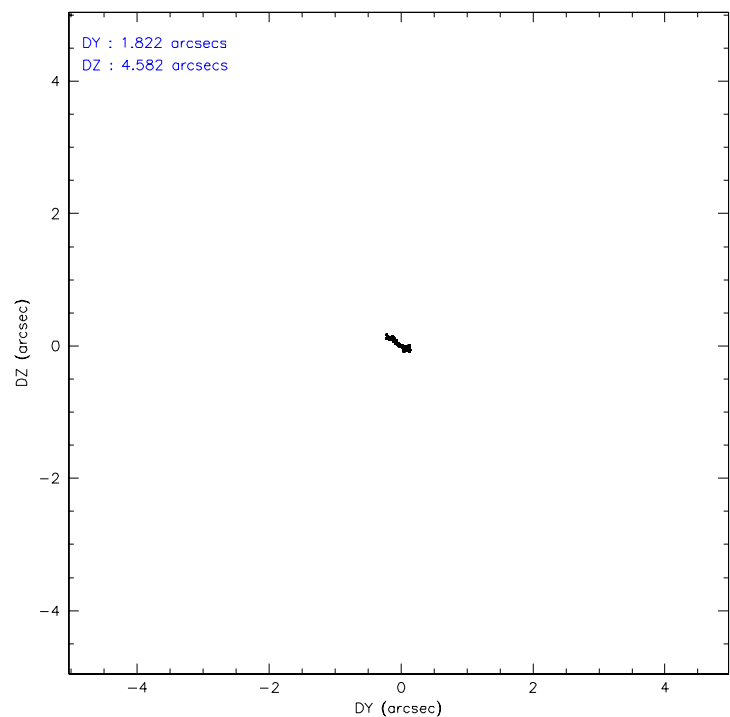
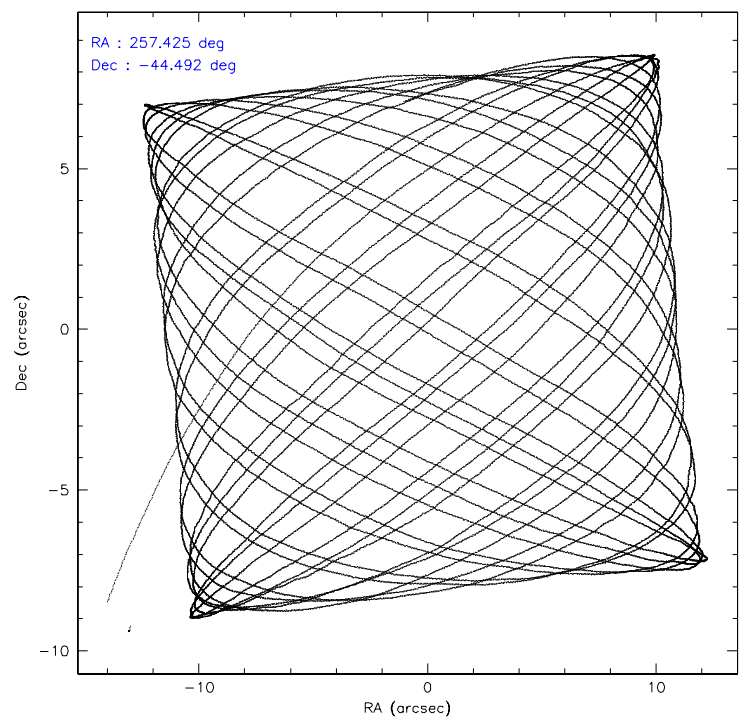
	ccd 2	ccd 3	ccd 5	ccd 6	ccd 7	ccd 8
level 1 events	101361	100847	156111	104342	150209	185144
rejected events	80436	77526	67059	80454	60100	90933
rejected %	79%	76%	42%	77%	40%	49%

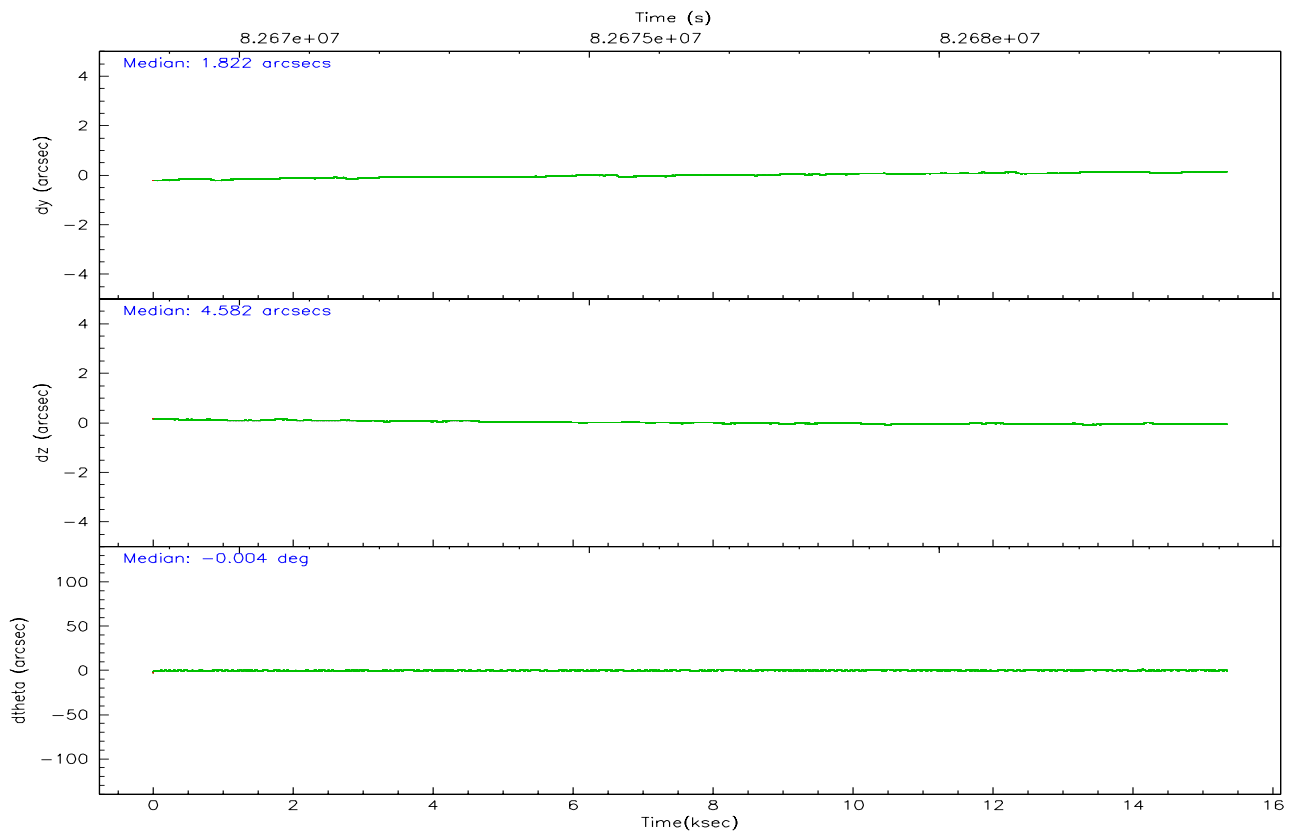
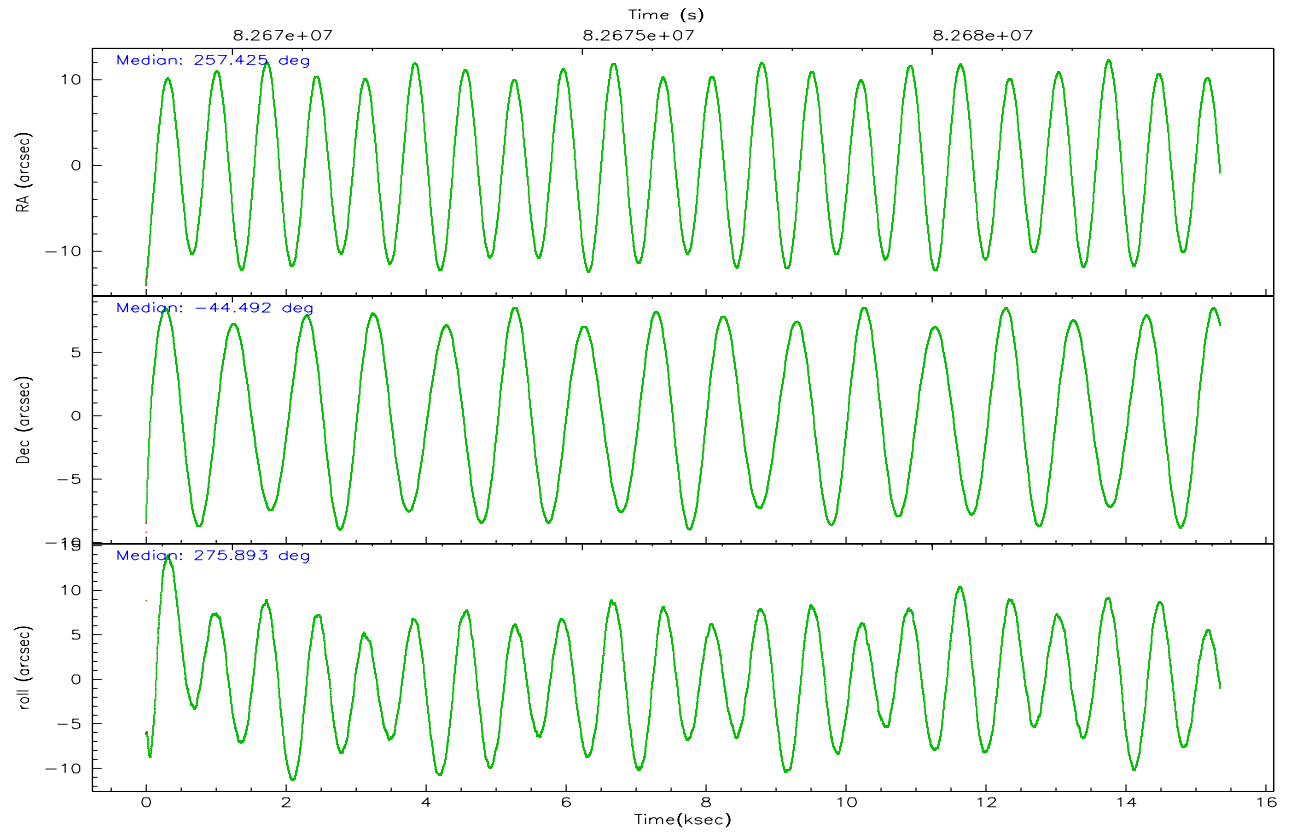
	ccd 2	ccd 3	ccd 5	ccd 6	ccd 7	ccd 8
grade 0 events	10361	11733	13663	12721	10706	39968
	10%	11%	8%	12%	7%	21%
grade 1 events	69	62	252	72	140	284
	0%	0%	0%	0%	0%	0%
grade 2 events	4851	5751	25058	5261	17613	12616
	4%	5%	16%	5%	11%	6%
grade 3 events	1020	1104	4943	1186	7847	14663
	1%	1%	3%	1%	5%	7%
grade 4 events	1329	1186	4783	1233	7729	13113
	1%	1%	3%	1%	5%	7%
grade 5 events	2722	2970	9315	3185	9983	4695
	2%	2%	5%	3%	6%	2%
grade 6 events	3374	3556	40646	3508	46271	13903
	3%	3%	26%	3%	30%	7%
grade 7 events	77635	74485	57451	77176	49920	85902
	76%	73%	36%	73%	33%	46%

2.2 Compared Parameters

Parameter	Planned	Actual	Parameter	Planned	Actual
Instrument	ACIS	ACIS	Obspar format version number	6	6
Detector	ACIS-235678	ACIS-235678	Obspar file type	PREDICTED	ACTUAL
Grating	NONE	NONE	Obspar update status	NONE	UPDATED
Data mode	FAINT	FAINT	Number of optional ACIS chips dropped	0	0
Observation mode	POINTING	POINTING	On-chip summing requested	N	N
Pointing RA	257.402053	257.4247571479731	Subarray requested	NONE	NONE
Pointing Dec	-44.470302	-44.49236116653901	Alternating exposures requested	N	N
Pointing Roll	275.725684	275.8982328087034	Primary exposure time	3.200000	3.2
SIM focus pos (mm)	-0.684267	-0.6828225247311905			
SIM defocus (mm)	0	0.001444936568705701			
SIM translation stage pos (mm)	-190.132523	-190.1425803651734			
SIM translation stage offset (mm)	0	0.01005778216563158			
Observation start time	82669629.184000	82668246.445895			
Observation start date	2000-08-14T19:46:05	2000-08-14T19:24:06			
Observation end time	82684119.184000	82684428.121501			
Observation end date	2000-08-14T23:47:35	2000-08-14T23:53:48			
Read mode	TIMED	TIMED			

2.3 Aspect



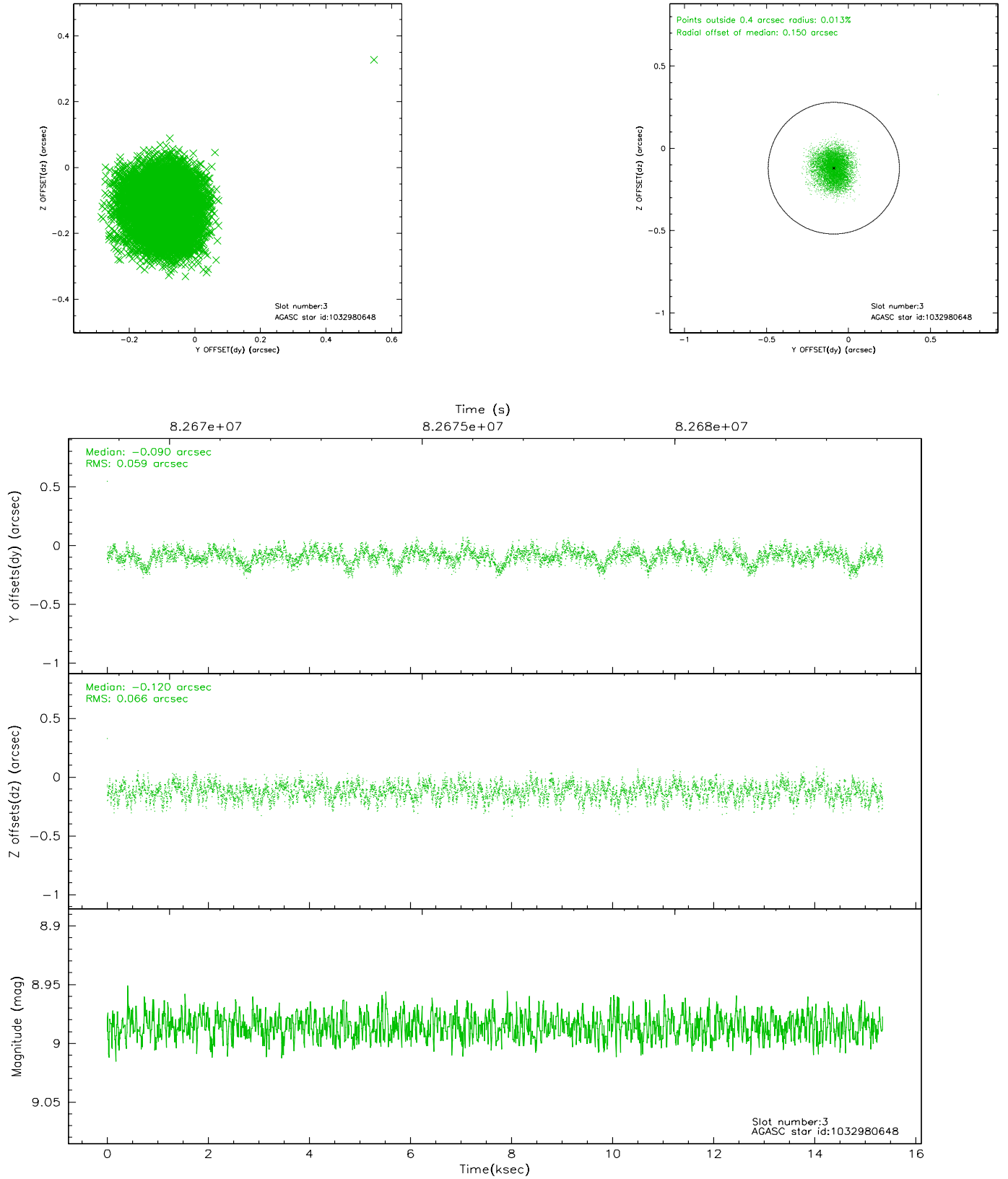


Slot Statistics

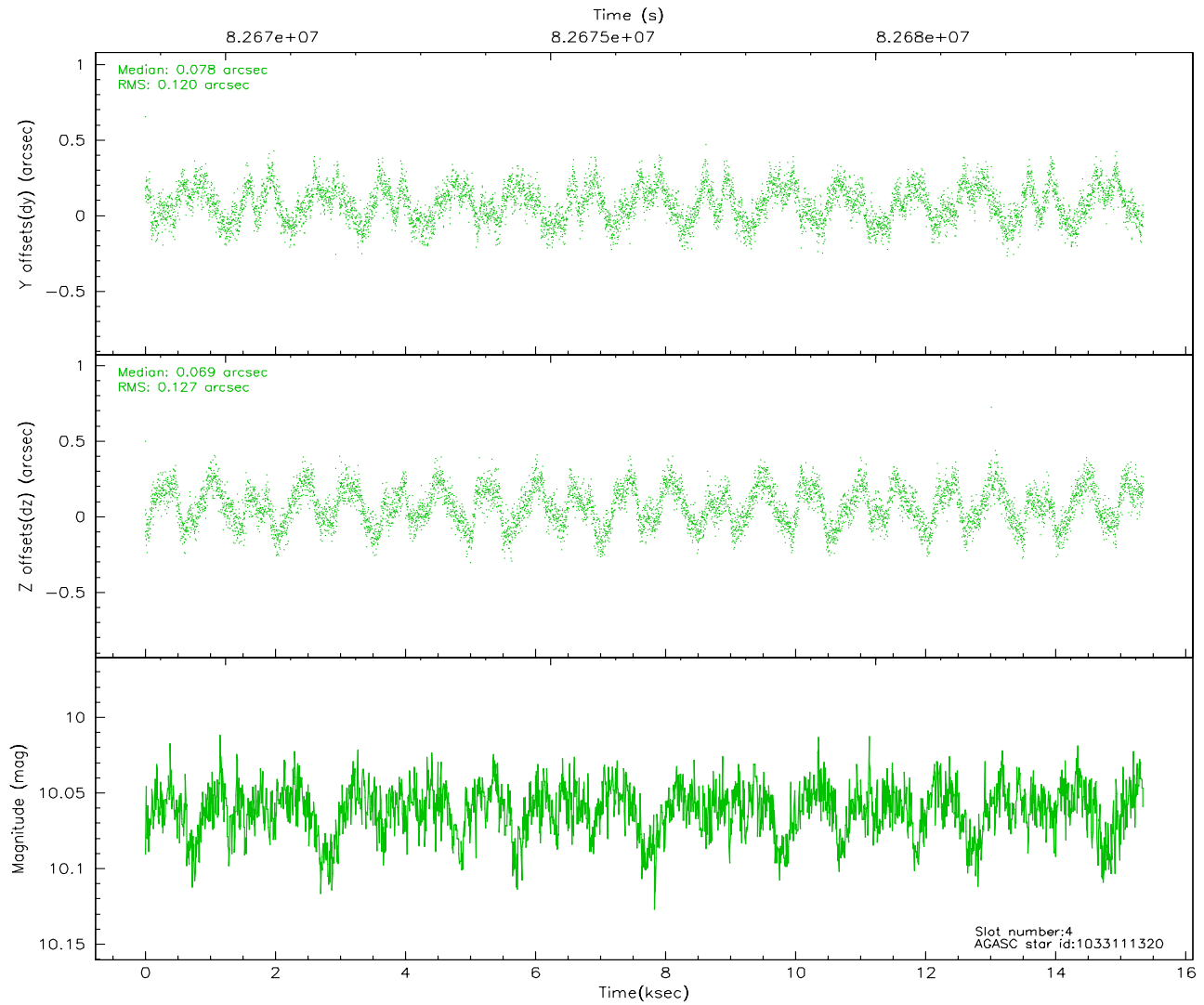
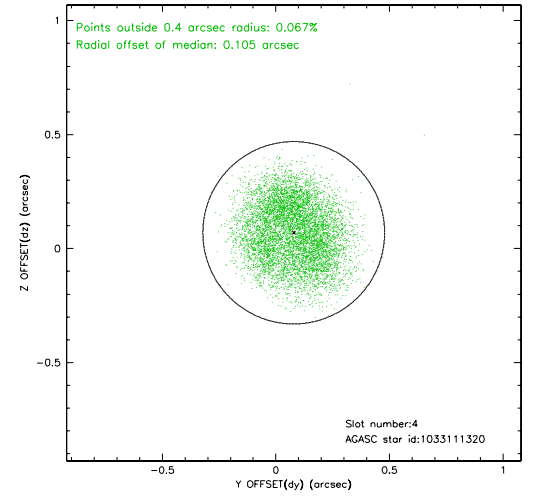
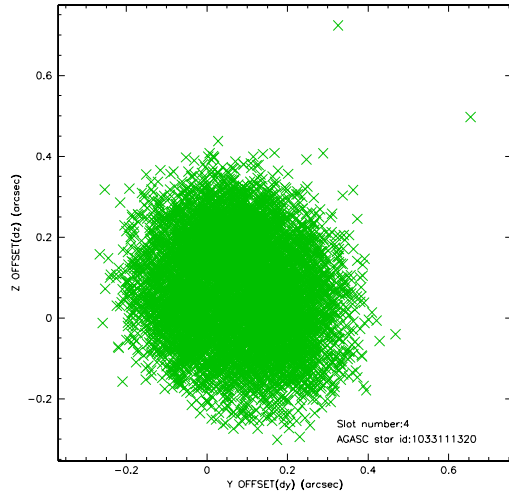
slot	status	id	mag	n_pts	med_dy	med_dz	dr1	dr2	ra	dec	mean_y	mean_z
0	FID	ACIS-S-2	7.12	3744	-0.013	0.014	0.007	0.012	0.000000	0.000000	-754.43	-1725.63
1	FID	ACIS-S-4	7.21	3743	-0.060	0.002	0.005	0.009	0.000000	0.000000	2158.67	182.54
2	FID	ACIS-S-5	7.24	3743	0.042	-0.008	0.007	0.012	0.000000	0.000000	-1806.84	176.53
3	GUIDE	1032980648	8.99	7485	-0.090	-0.120	0.096	0.148	256.588109	-44.440758	-302.63	-2072.51
4	GUIDE	1033111320	10.06	7481	0.078	0.069	0.192	0.281	257.828432	-44.679268	861.69	1010.22
5	GUIDE	1033111848	9.17	7485	0.070	0.071	0.086	0.137	257.770921	-44.964714	1868.48	757.14
6	GUIDE	1032986656	10.23	7481	0.014	-0.115	0.145	0.234	256.880697	-44.255553	-897.25	-1261.28
7	GUIDE	1033111096	9.65	7485	-0.072	0.094	0.106	0.174	257.807432	-44.097992	-1225.32	1175.80

2.4 Star Slots

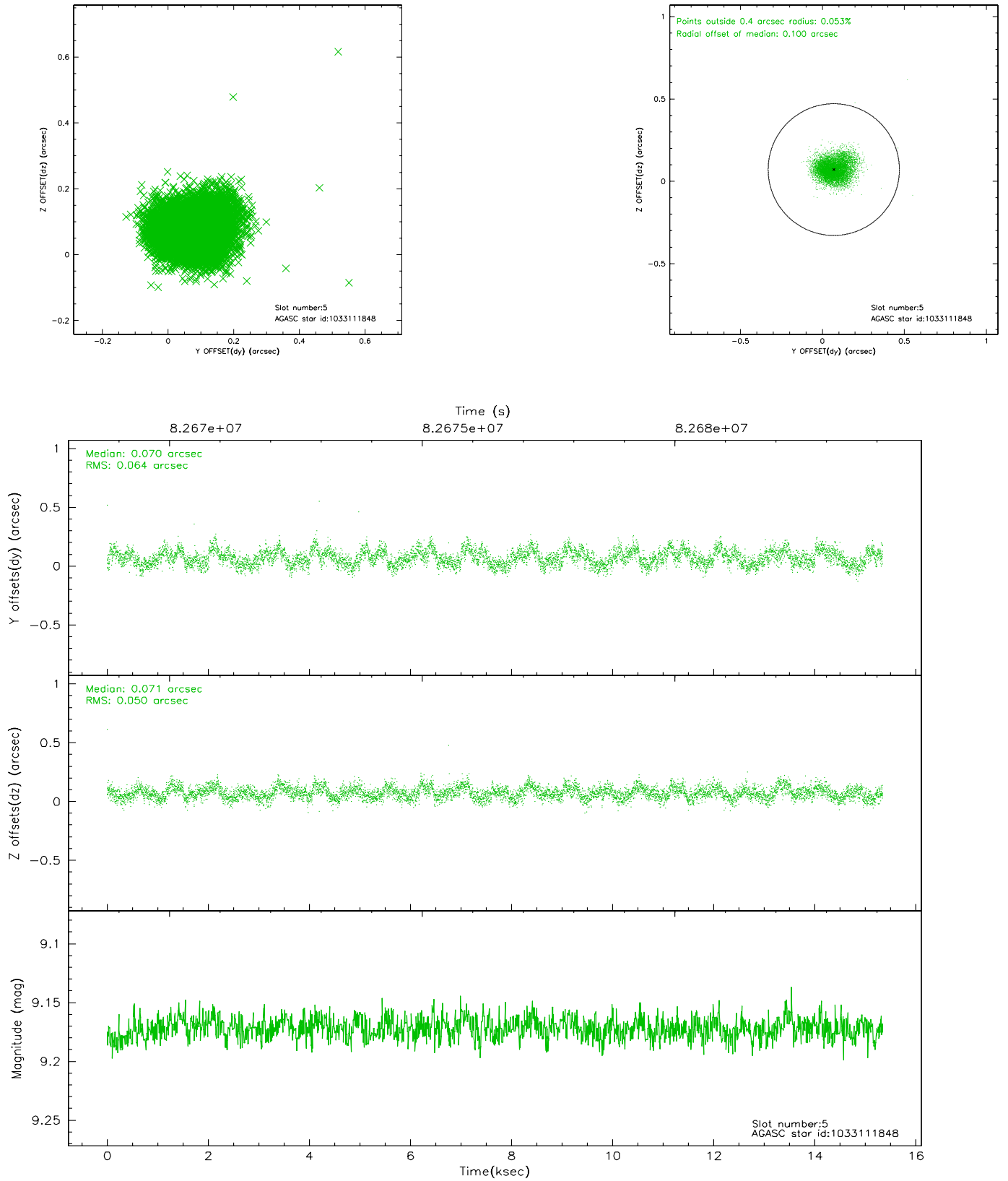
2.4.1 Slot 3



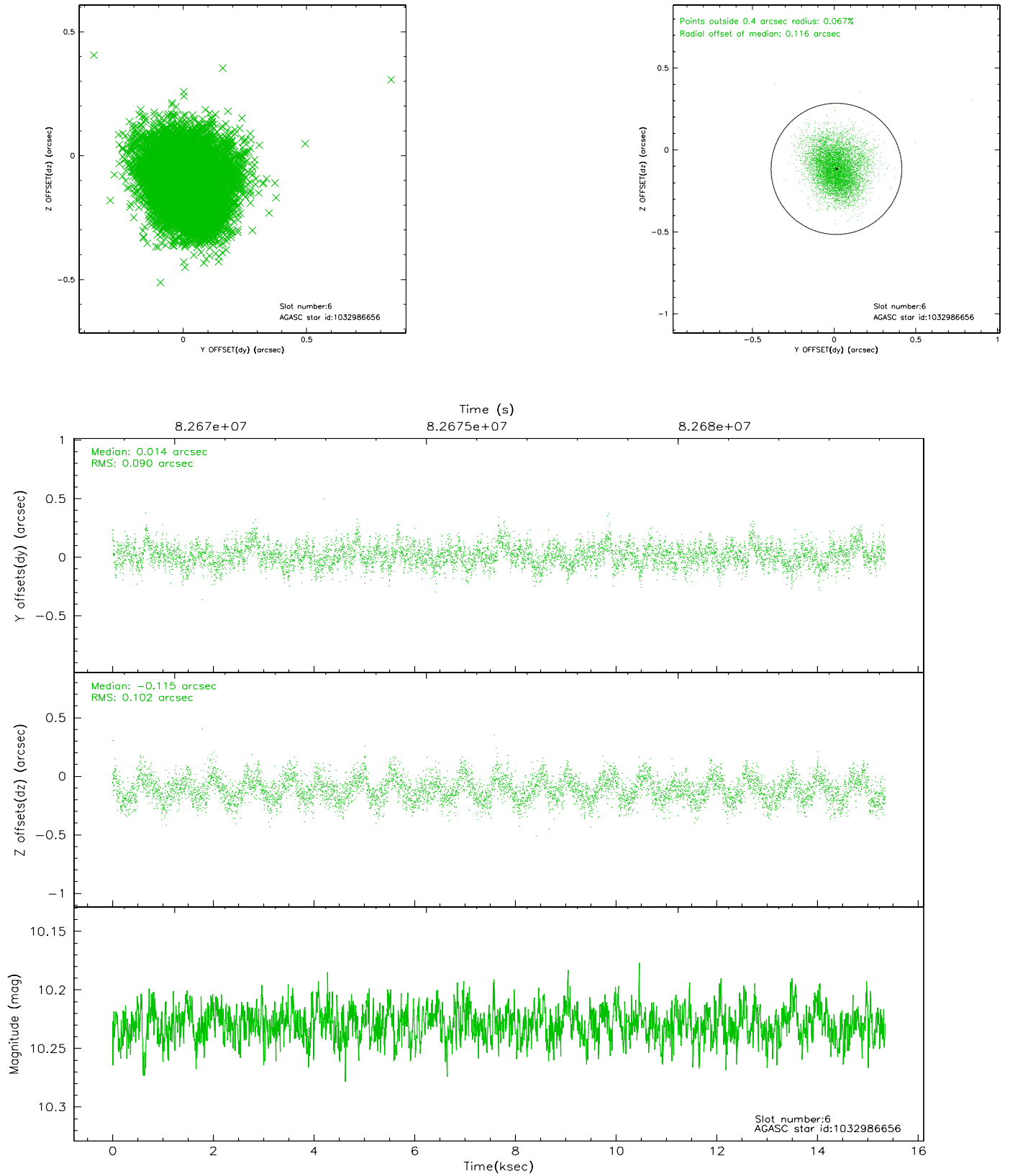
2.4.2 Slot 4



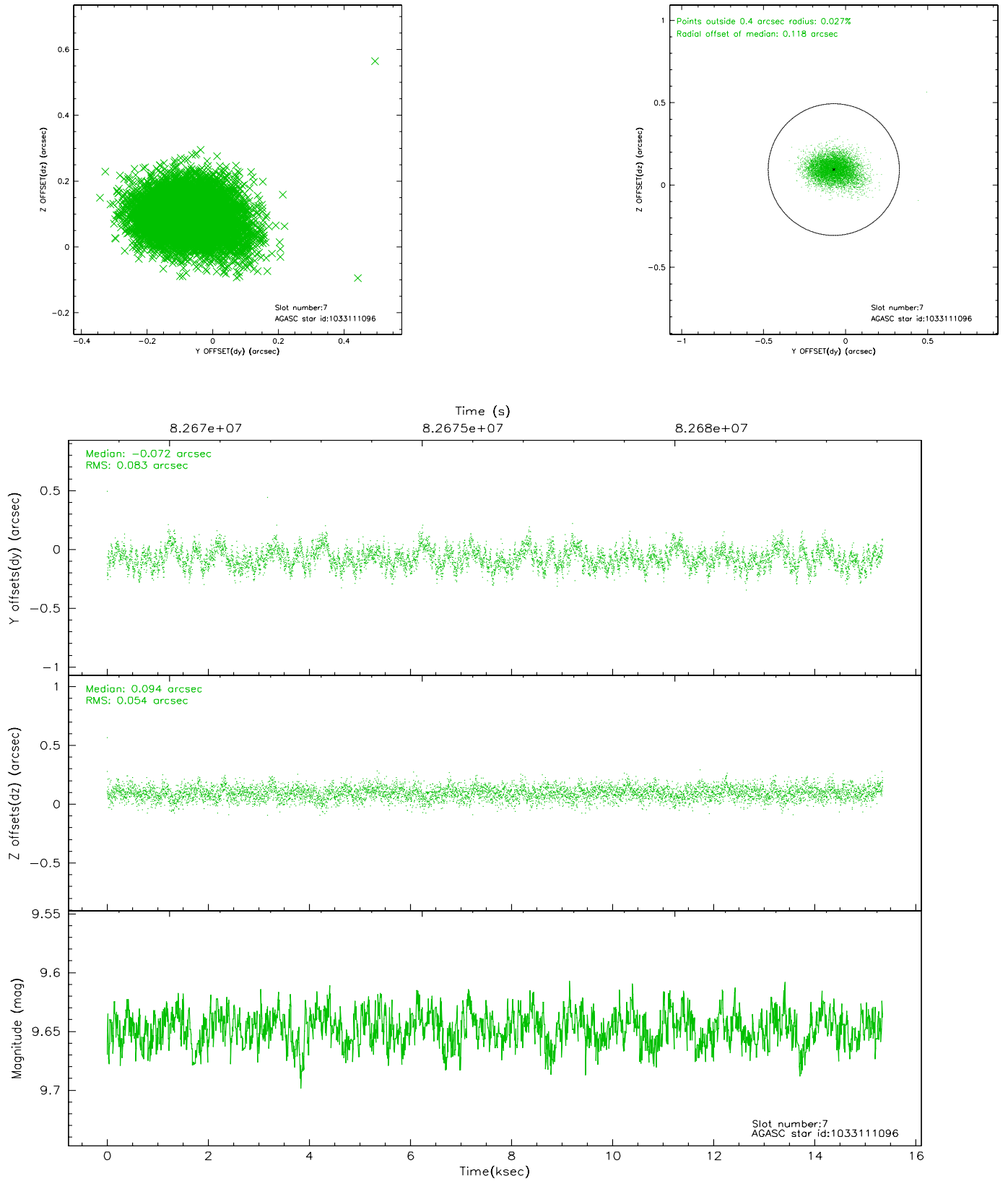
2.4.3 Slot 5



2.4.4 Slot 6

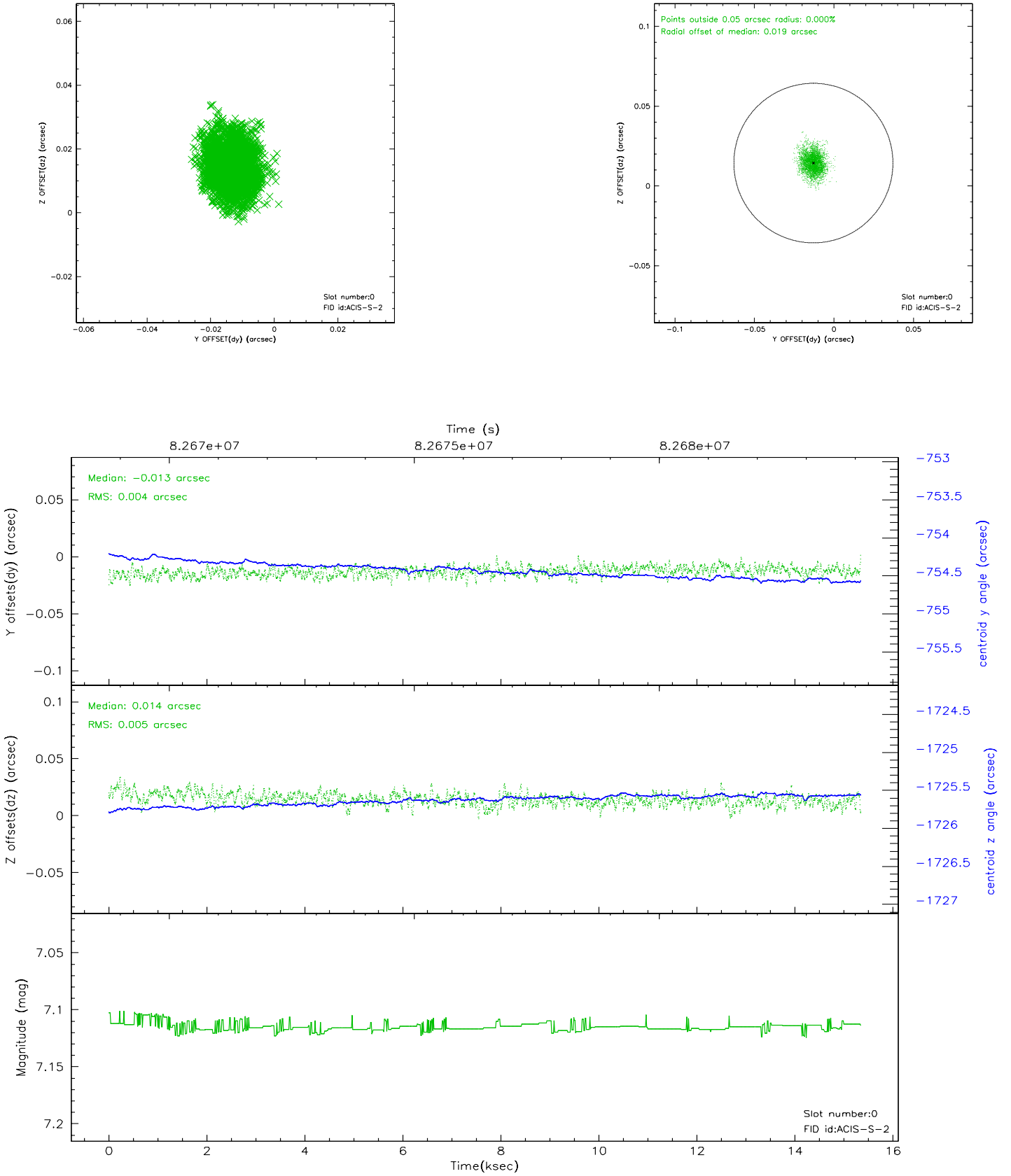


2.4.5 Slot 7

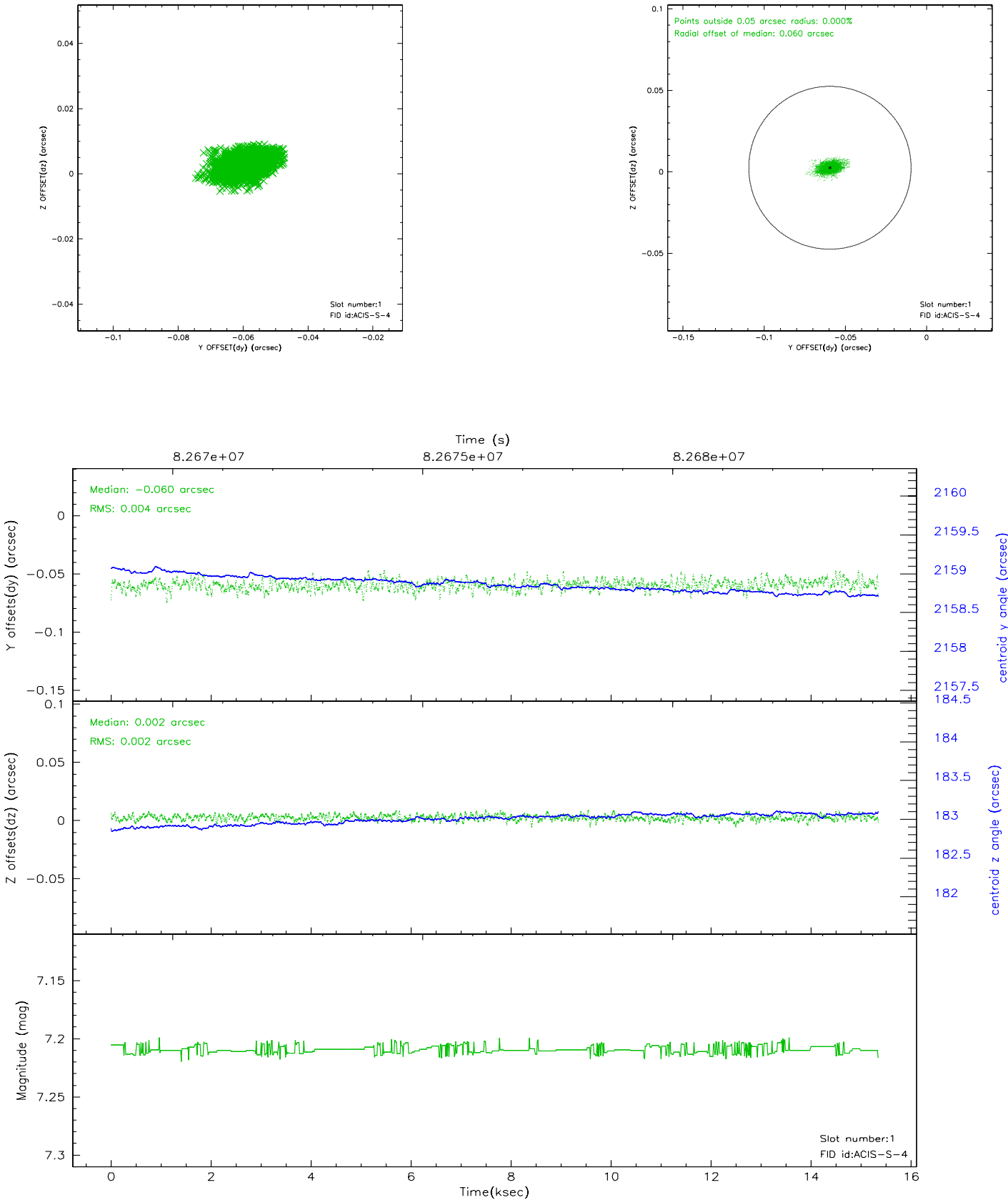


2.5 FID Slots

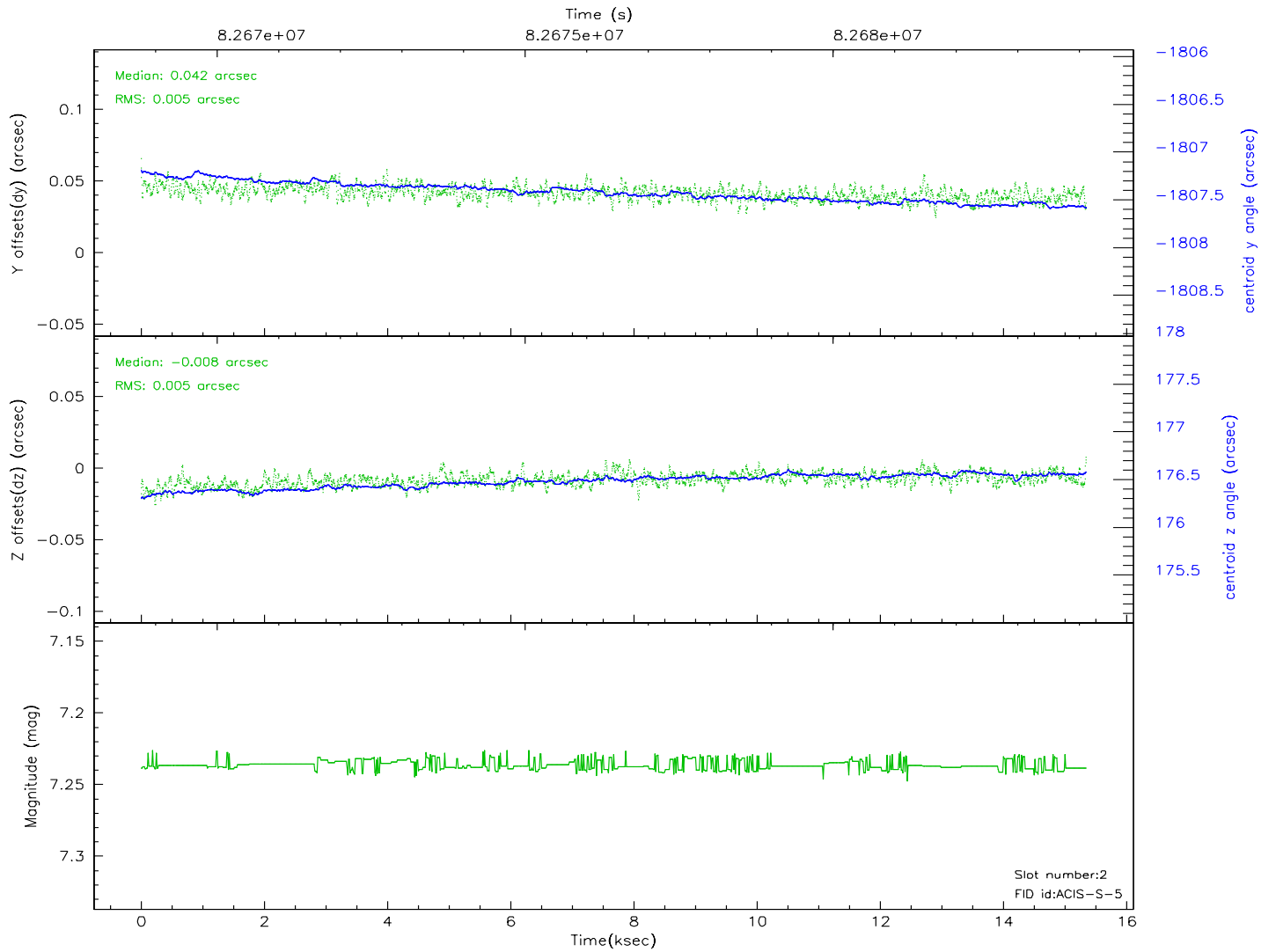
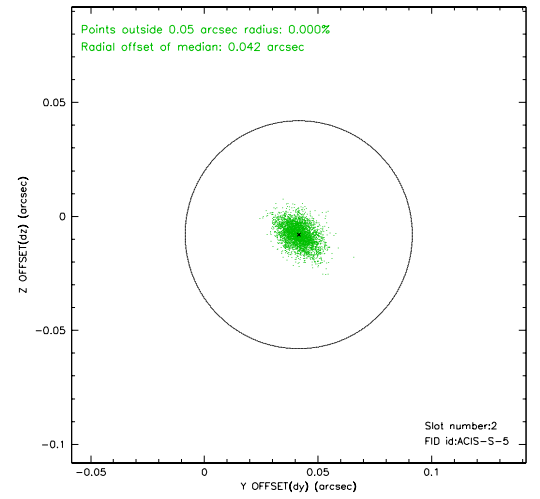
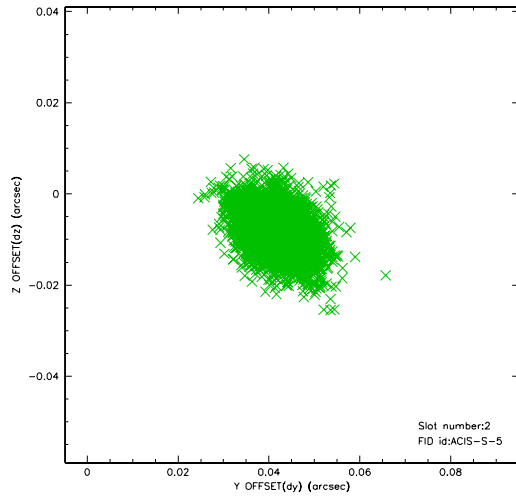
2.5.1 Slot 0



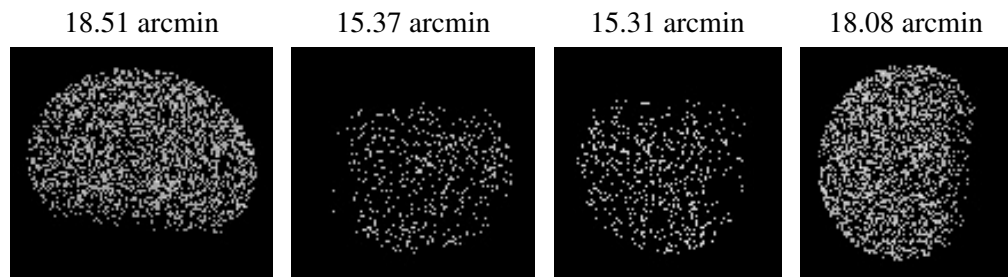
2.5.2 Slot 1



2.5.3 Slot 2



3 Point Sources



A Summary

A.1 Status

V&V Scientist	Jen Lauer
V&V Date (YYYY-MM-DD)	2007.06.04
V&V Edition	1
V&V Disposition and Status	OK
V&V Charge Time	14.435

A.2 Comments