

V&V Reference Report

L2 ASCDS Version : 8.4.3.1

Observation 7407 - L2 Version 2
Chandra X-Ray Center

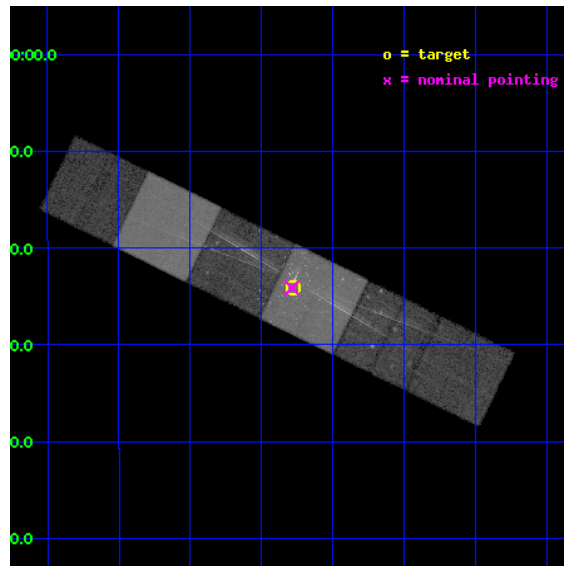
L2 Processing Date : Apr 14 2012

Contents

1	Front	2
2	OBI	3
2.1	OBI	3
2.1.1	Images	3
2.1.2	Bias	3
2.1.3	Parameters	4
2.1.4	Events	4
2.2	Compared Parameters	5
2.3	Aspect	6
2.4	Star Slots	9
2.4.1	Slot 3	9
2.4.2	Slot 4	10
2.4.3	Slot 5	11
2.4.4	Slot 6	12
2.4.5	Slot 7	13
2.5	FID Slots	14
2.5.1	Slot 0	14
2.5.2	Slot 1	15
2.5.3	Slot 2	16
3	Gratings	17
3.1	HEG Arm	17
3.2	MEG Arm	19
A	Summary	21
A.1	Status	21
A.2	Comments	21

1 Front

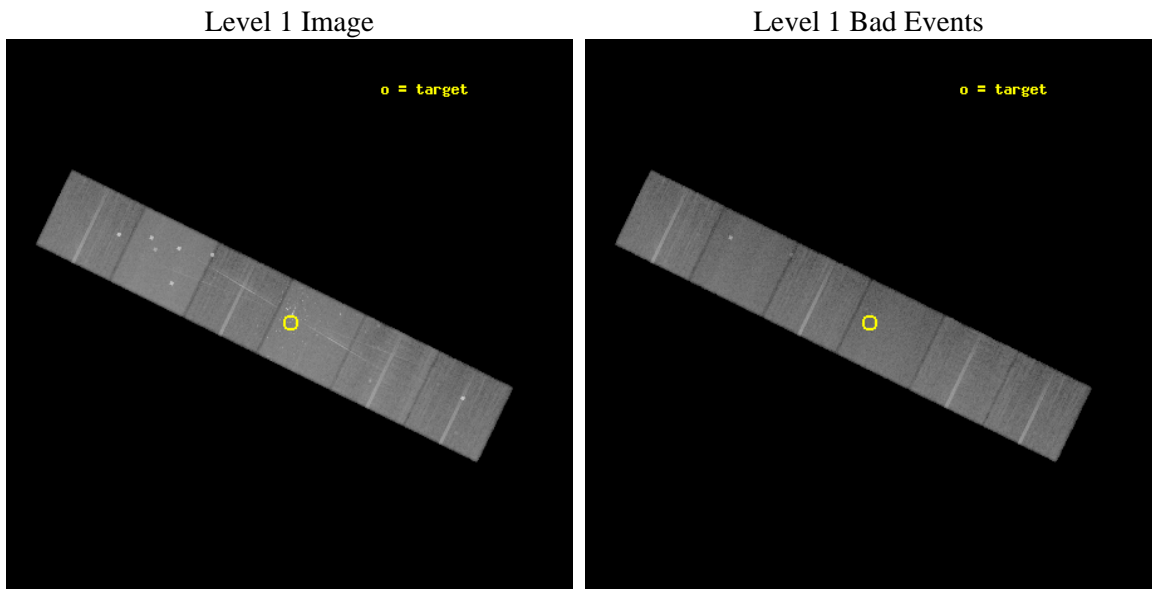
seq_num	200420	Sequence number
obs_id	7407	Observation id
title	High Resolution Studies of Pre-Main Sequence Stars in Orion	Propos
observer	Prof Claude Canizares	Principal investigator
object	Orion Trapezium Cluster	Source name
dtcycle	0	
cycle	P	events from which exps? Prim/Second/Both
ra_targ	83.82	Observer's specified target RA [deg]
dec_targ	-5.401167	Observer's specified target Dec [deg]
ra_nom	83.821844796381	Nominal RA [deg]
dec_nom	-5.402118964491	Nominal Dec [deg]
roll_nom	26.008374283367	Nominal Roll [deg]
revision	2	Processing version of data
ontime	24949.688052833	Sum of GTIs [s]
livetime	24633.76007981	Livetime [s]
ontime4	24940.006111681	Sum of GTIs [s]
ontime5	24949.64701283	Sum of GTIs [s]
ontime6	24949.605972826	Sum of GTIs [s]
ontime7	24949.688052833	Sum of GTIs [s]
ontime8	24949.564932823	Sum of GTIs [s]
ontime9	24949.52389282	Sum of GTIs [s]
l2events	459278	Number of level 2 events



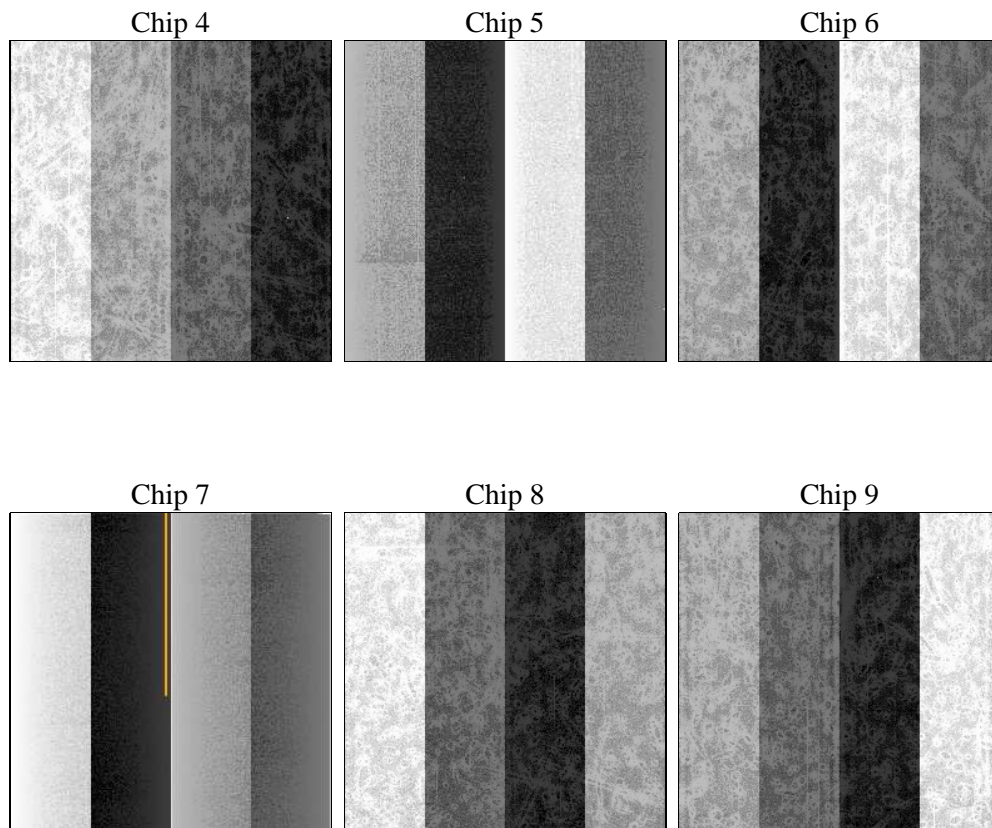
2 OBI

2.1 OBI

2.1.1 Images



2.1.2 Bias



2.1.3 Parameters

obi_num	0	Obi number	sched_exp_time	25000.000000	[s] Scheduled observation exposure time
ascdsver	8.4.3.1	Processing system revision	ontime	24949.688052833	Sum of GTIs [s]
caldsver	4.4.9	 	ontime4	24940.006111681	Sum of GTIs [s]
date	2012-04-14T17:37:03	Date and time of file creation	ontime5	24949.64701283	Sum of GTIs [s]
revision	2	Processing version of data	ontime6	24949.605972826	Sum of GTIs [s]
			ontime7	24949.688052833	Sum of GTIs [s]
			ontime8	24949.564932823	Sum of GTIs [s]
			ontime9	24949.52389282	Sum of GTIs [s]
			l1events	1813822	Number of level 1 events

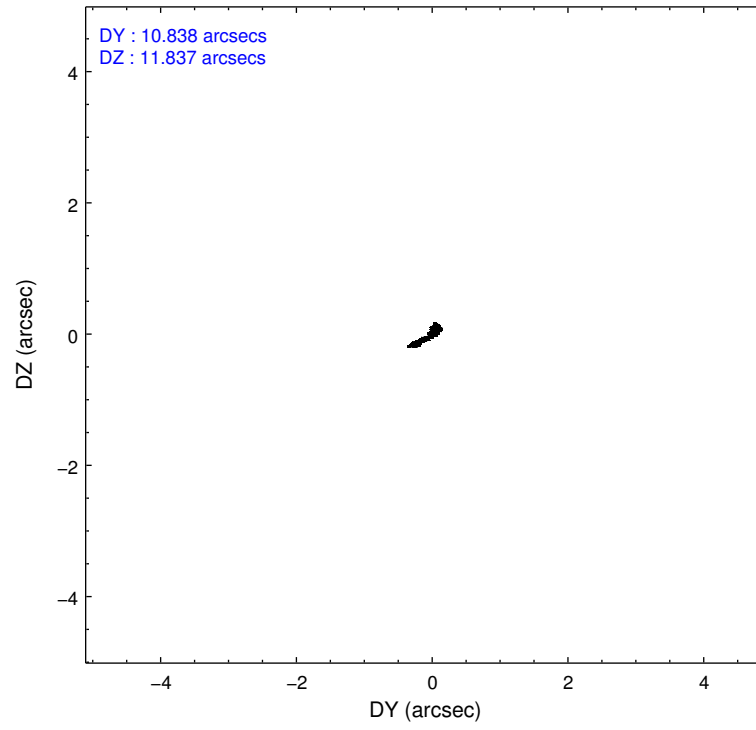
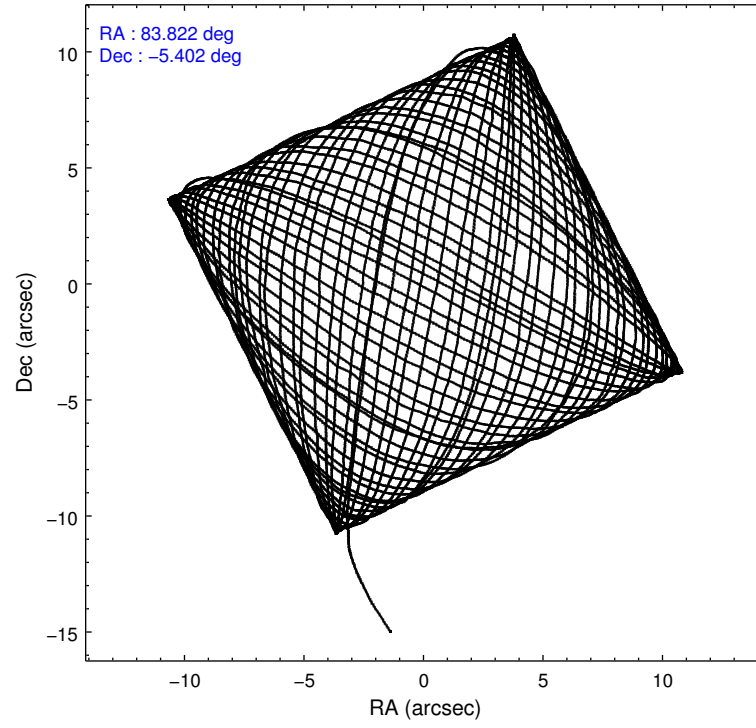
2.1.4 Events

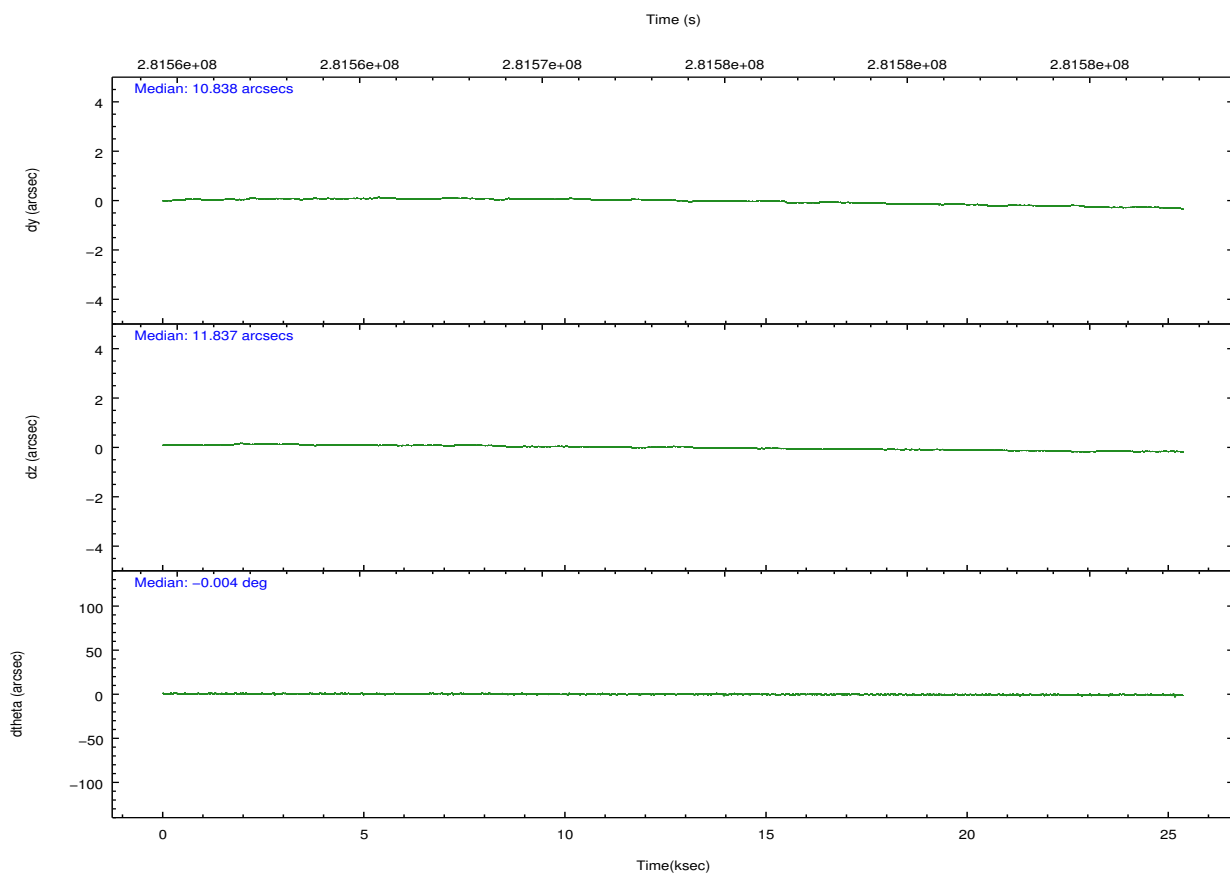
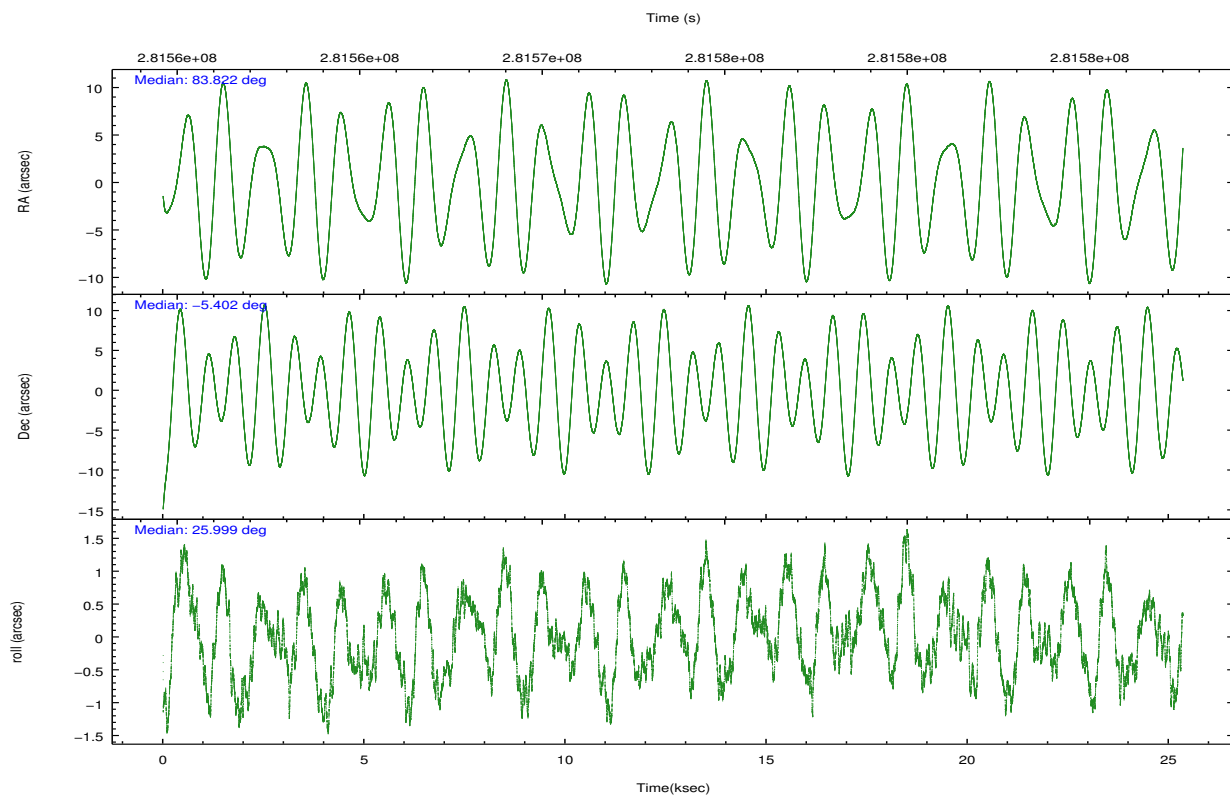
	ccd 4	ccd 5	ccd 6	ccd 7	ccd 8	ccd 9		ccd 4	ccd 5	ccd 6	ccd 7	ccd 8	ccd 9
level 1 events	265423	373709	257101	360427	310215	246947	grade 0 events	20985	29372	27253	20342	30470	14675
rejected events	228071	192683	208589	187719	232512	207687		7%	7%	10%	5%	9%	5%
rejected %	85%	51%	81%	52%	74%	84%	grade 1 events	266	732	216	455	274	193
								0%	0%	0%	0%	0%	0%
							grade 2 events	6133	52787	8287	36946	15611	13353
								2%	14%	3%	10%	5%	5%
							grade 3 events	2900	6669	3449	15803	7512	2804
								1%	1%	1%	4%	2%	1%
							grade 4 events	2834	6157	3236	15578	6900	2878
								1%	1%	1%	4%	2%	1%
							grade 5 events	10326	25415	10657	30400	14233	11610
								3%	6%	4%	8%	4%	4%
							grade 6 events	4507	86086	6303	84088	17302	5562
								1%	23%	2%	23%	5%	2%
							grade 7 events	217472	166491	197700	156815	217913	195872
								81%	44%	76%	43%	70%	79%

2.2 Compared Parameters

Parameter	Planned	Actual	Parameter	Planned	Actual
Instrument	ACIS	ACIS	Obspar format version number	7	7
Detector	ACIS-456789	ACIS-456789	Obspar file type	PREDICTED	ACTUAL
Grating	HETG	HETG	Obspar update status	NONE	UPDATED
Data mode	FAINT	FAINT	Number of optional ACIS chips dropped	0	0
Observation mode	POINTING	POINTING	On-chip summing requested	N	N
[deg] Pointing RA	83.806875	83.82184479638094	Subarray requested	NONE	NONE
[deg] Pointing Dec	-5.424907	-5.402118964491001	Alternating exposures requested	N	N
[deg] Pointing Roll	25.850333	26.00837428336722	[s] Primary exposure time	0.000000	3.2
[mm] SIM focus pos	-0.684267	-0.6828225247311905			
[mm] SIM defocus	0	0.001444936568705701			
[mm] SIM translation stage pos	-190.132523	-190.145094680475			
[mm] SIM translation stage offset	0	0.01257209746719923			
[s] Observation start time (MET)	281561261.184000	281560068.31478			
Observation start date	2006-12-03T19:26:36	2006-12-03T19:07:48			
[s] Observation end time (MET)	281586261.184000	281586956.11605			
Observation end date	2006-12-04T02:23:16	2006-12-04T02:35:56			
Read mode	TIMED	TIMED			

2.3 Aspect



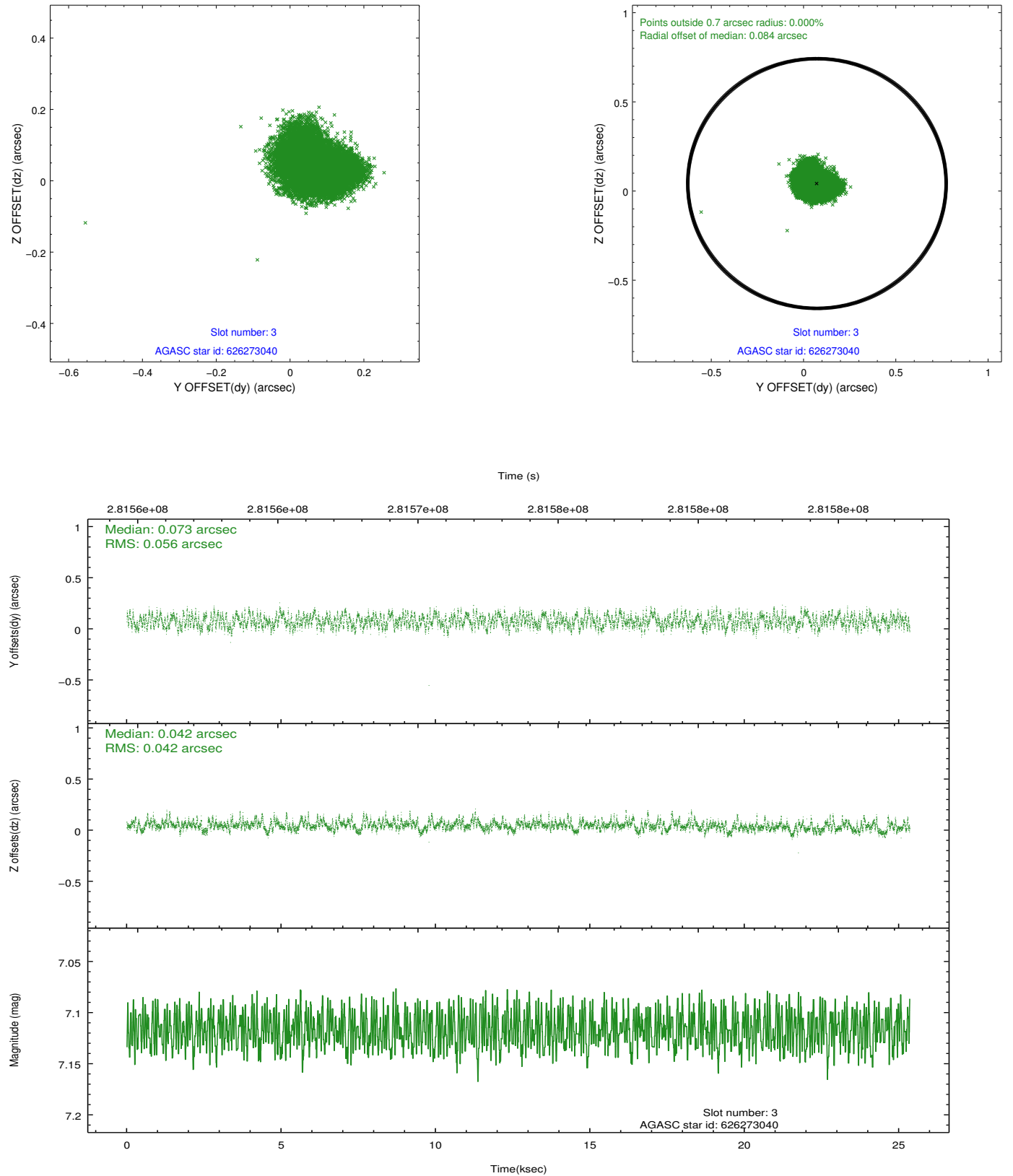


Slot Statistics

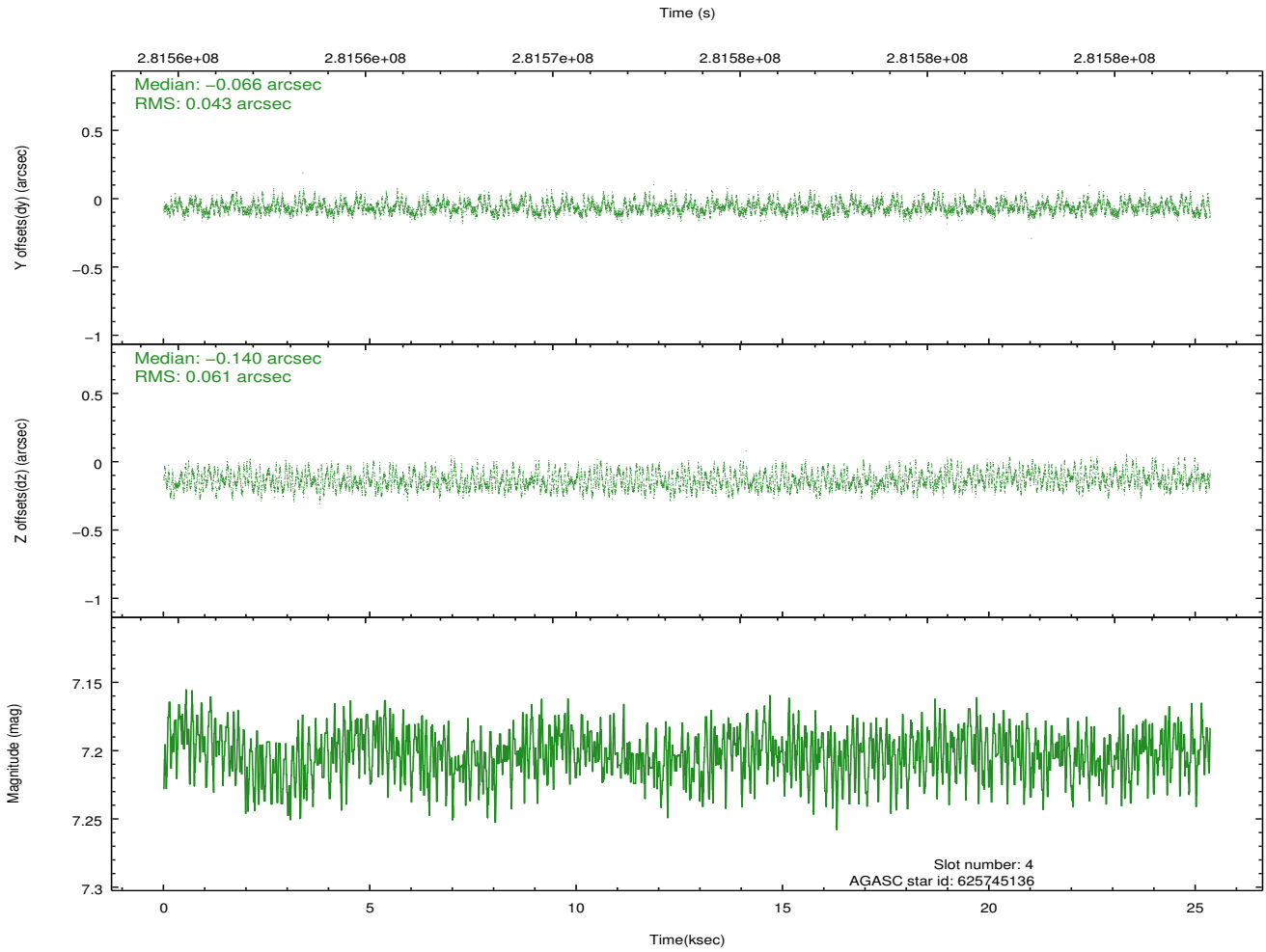
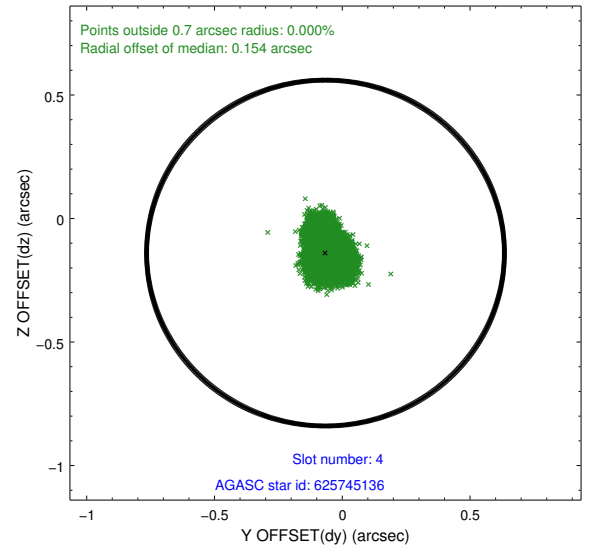
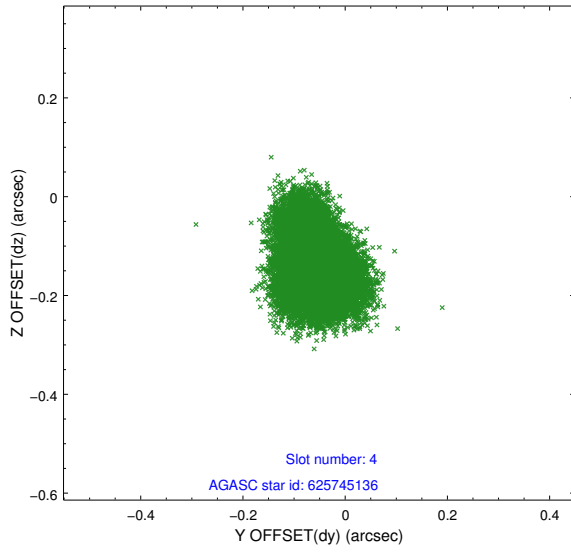
slot	status	id	mag	n_pts	med_dy	med_dz	dr1	dr2	ra	dec	mean_y	mean_z
0	FID	ACIS-S-1	7.19	6185	0.023	-0.088	0.009	0.017	0.000000	0.000000	932.37	-1728.75
1	FID	ACIS-S-4	7.21	6184	0.099	0.054	0.012	0.029	0.000000	0.000000	2149.95	175.41
2	FID	ACIS-S-5	7.23	6185	-0.149	0.047	0.011	0.027	0.000000	0.000000	-1816.50	169.19
3	GUIDE	626273040	7.12	12368	0.073	0.042	0.077	0.116	84.062610	-5.647920	474.90	-1122.09
4	GUIDE	625745136	7.20	12367	-0.066	-0.140	0.081	0.125	83.600341	-4.804339	307.24	2333.23
5	GUIDE	625745128	7.81	12366	0.061	-0.119	0.065	0.103	83.769930	-4.731835	968.63	2303.38
6	GUIDE	625745144	7.83	12365	-0.081	0.046	0.058	0.092	83.888985	-4.837539	1187.06	1774.89
7	GUIDE	626272880	7.66	12367	0.004	0.165	0.057	0.095	83.815609	-6.032748	-925.29	-1982.81

2.4 Star Slots

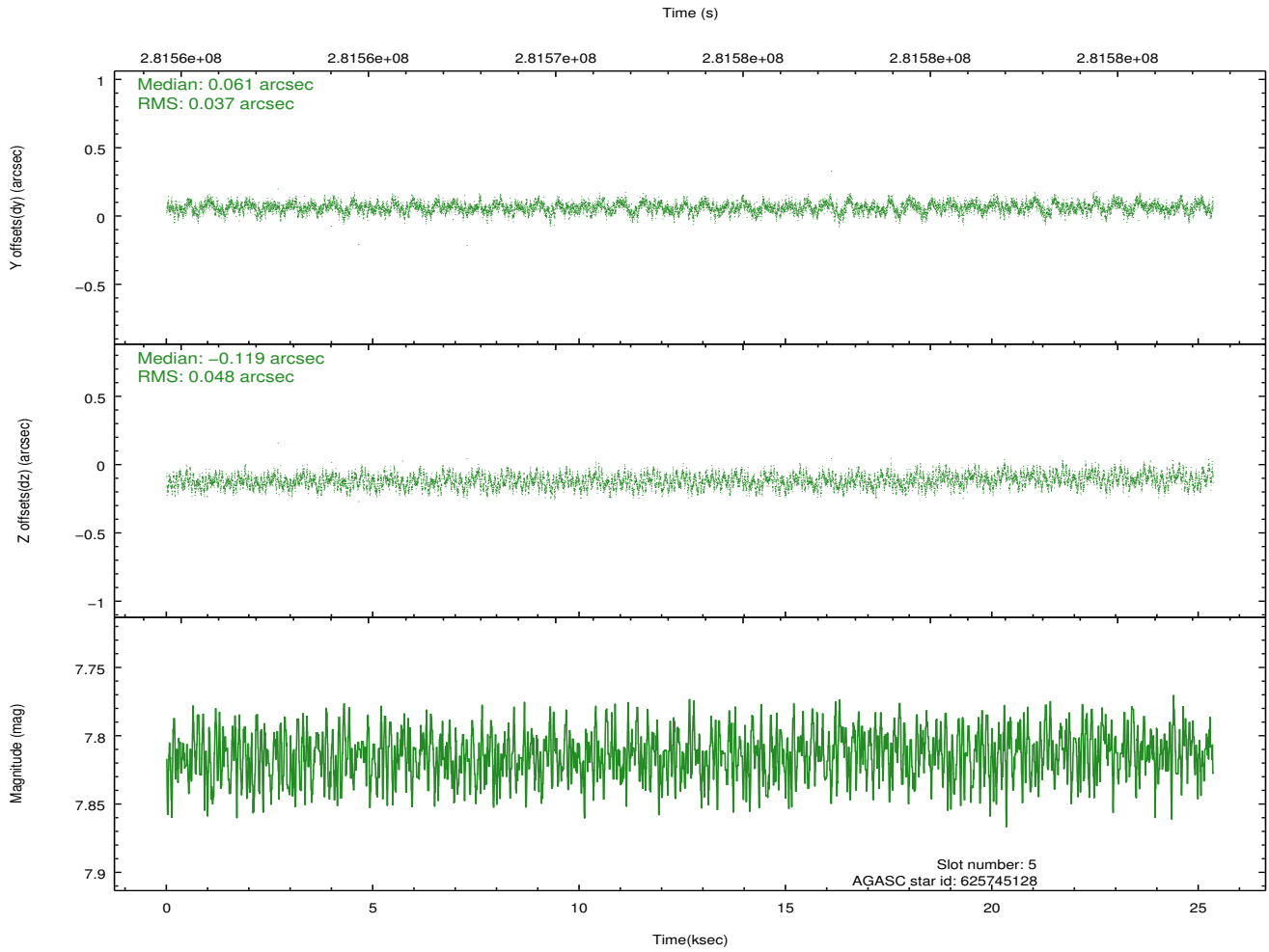
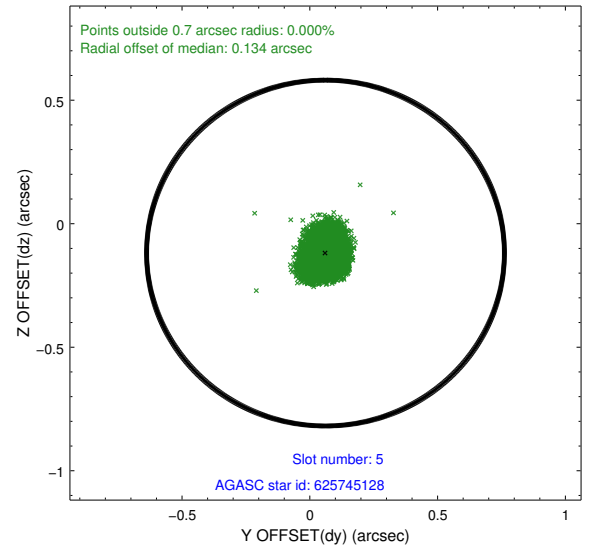
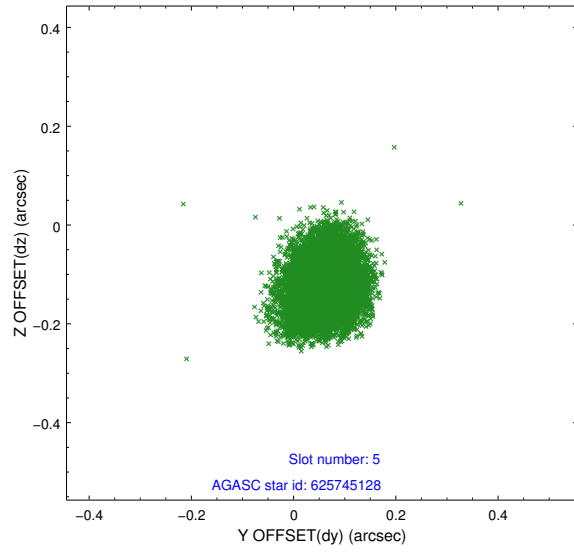
2.4.1 Slot 3



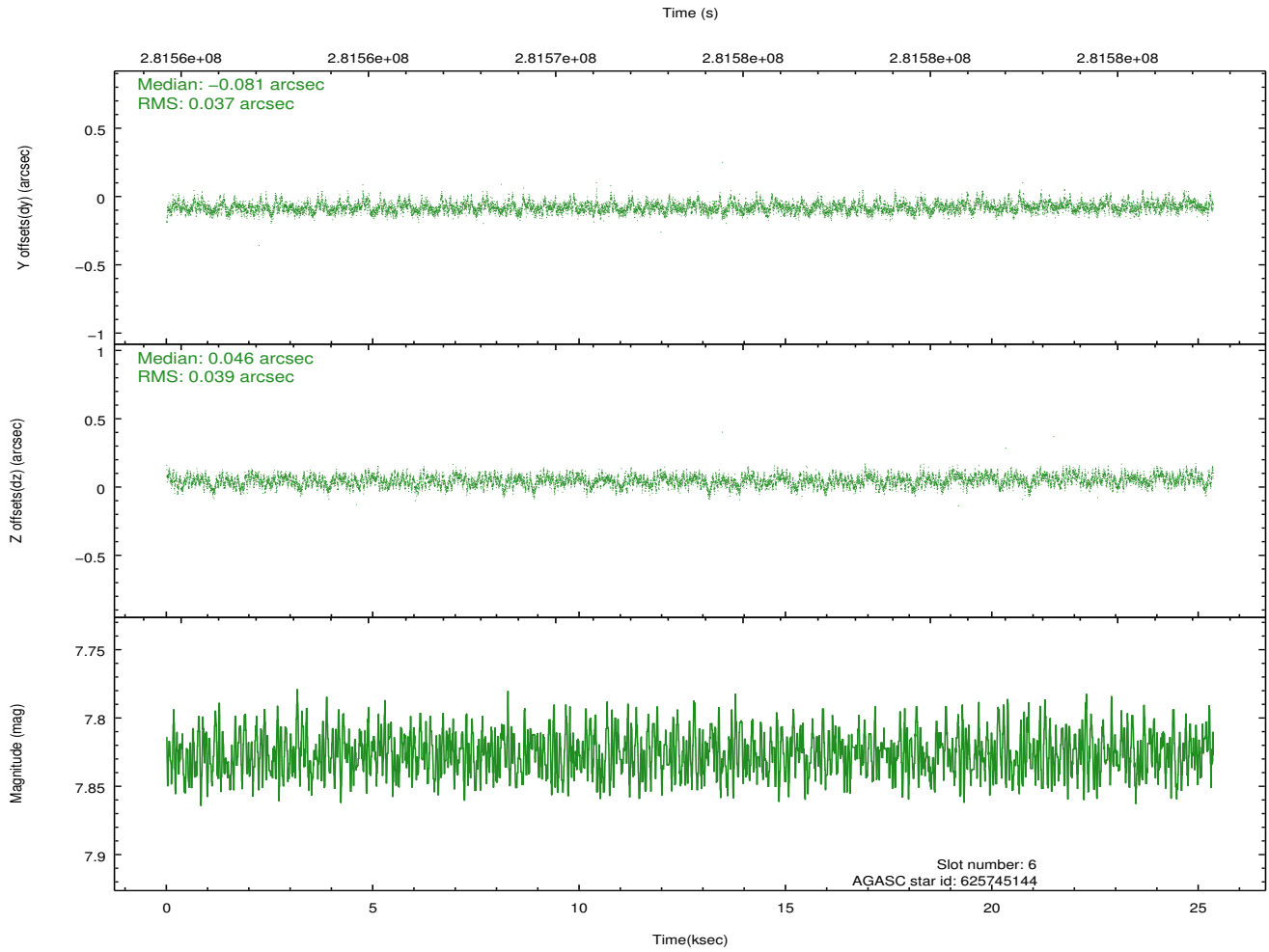
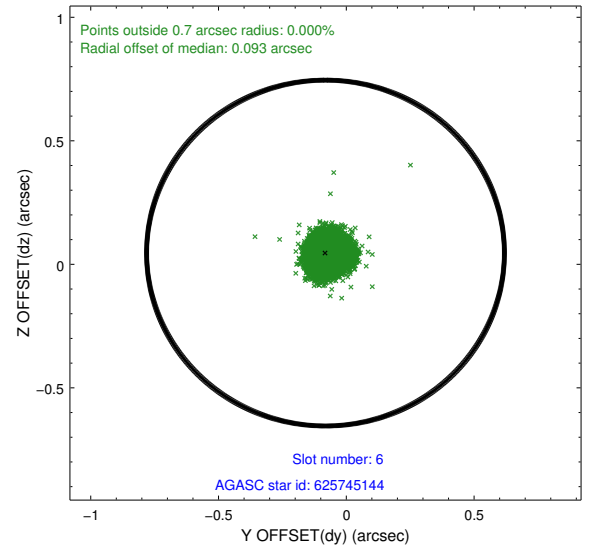
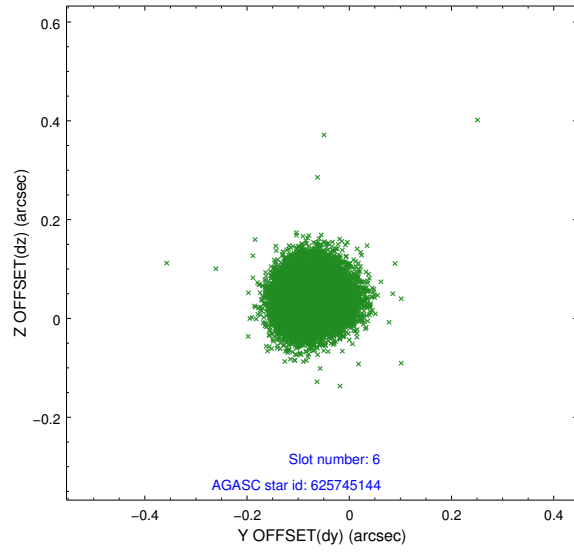
2.4.2 Slot 4



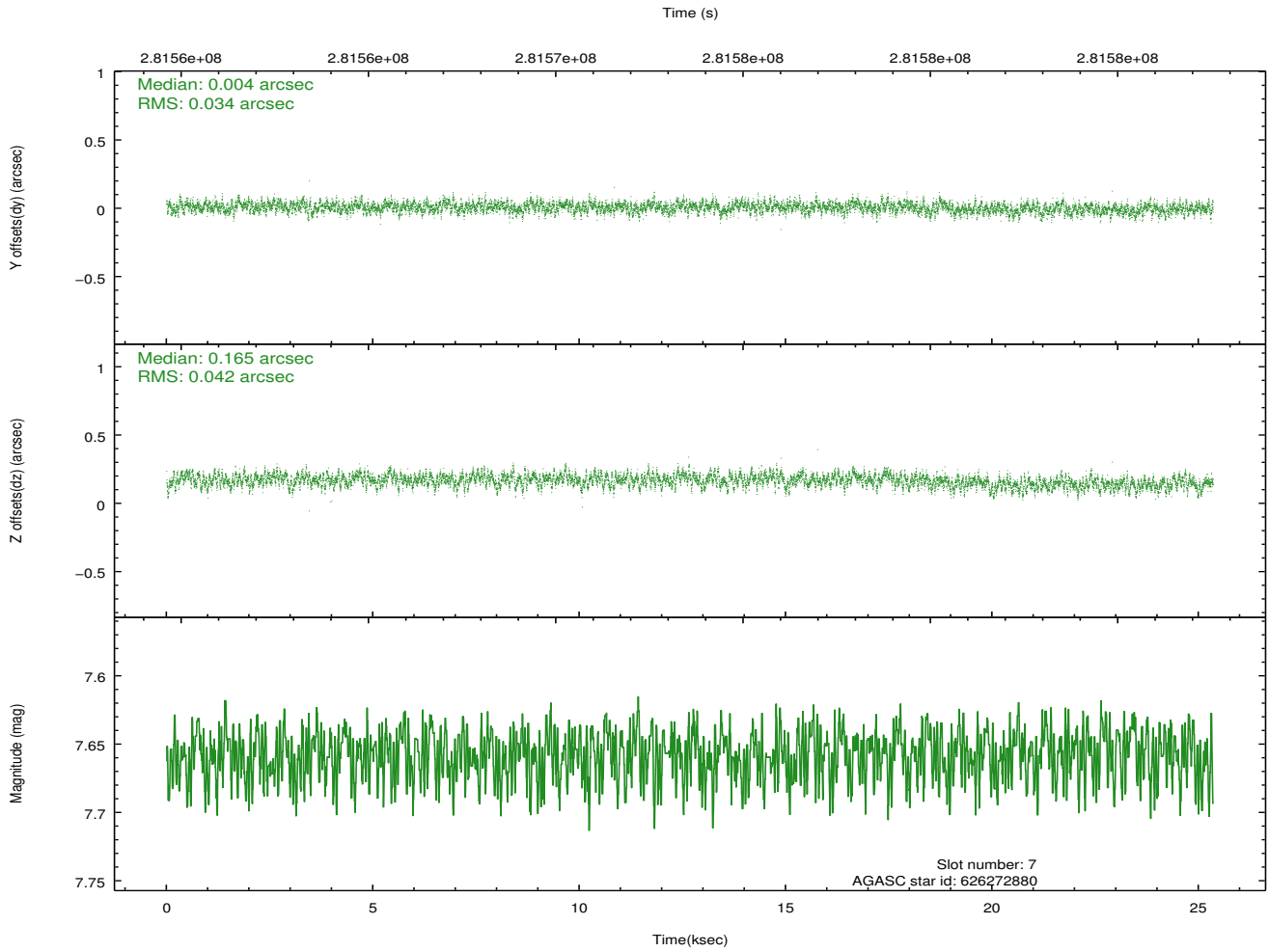
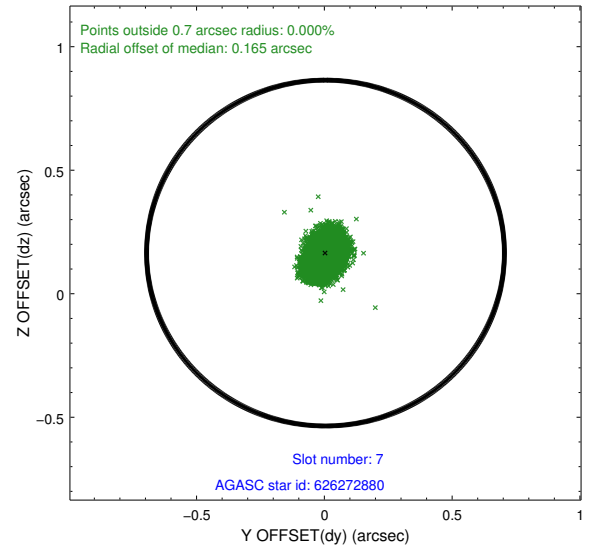
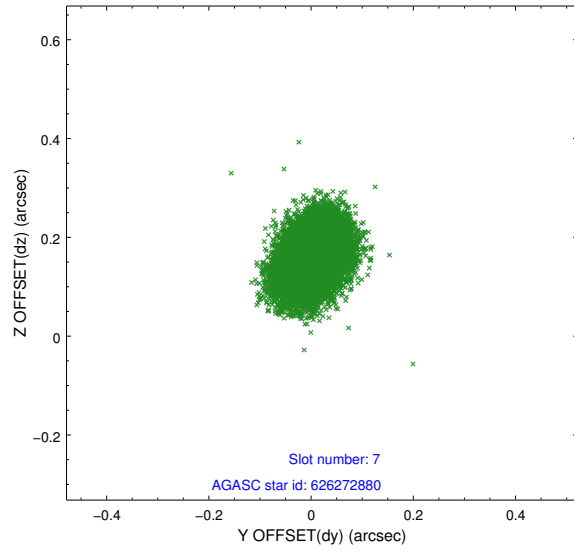
2.4.3 Slot 5



2.4.4 Slot 6

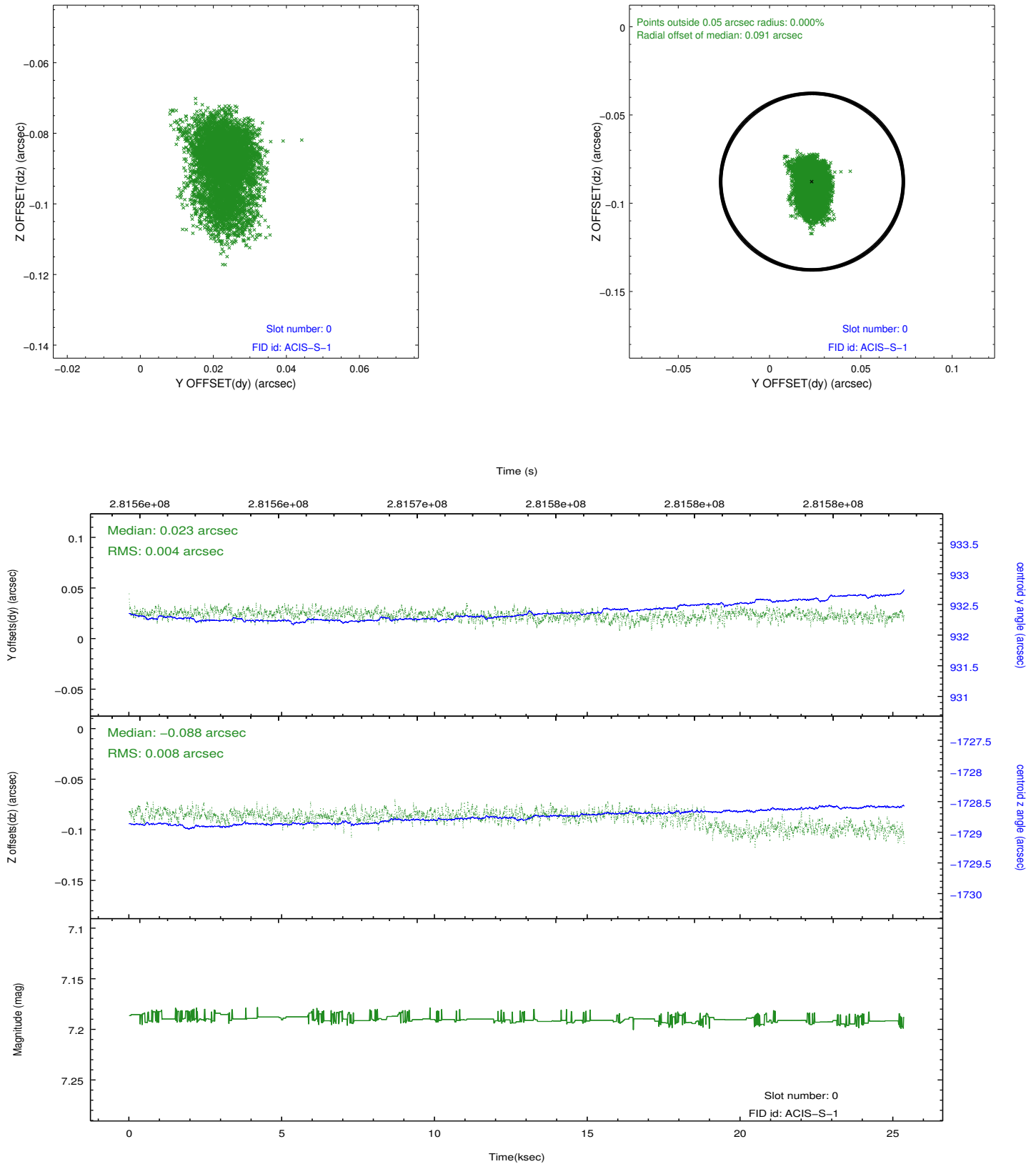


2.4.5 Slot 7

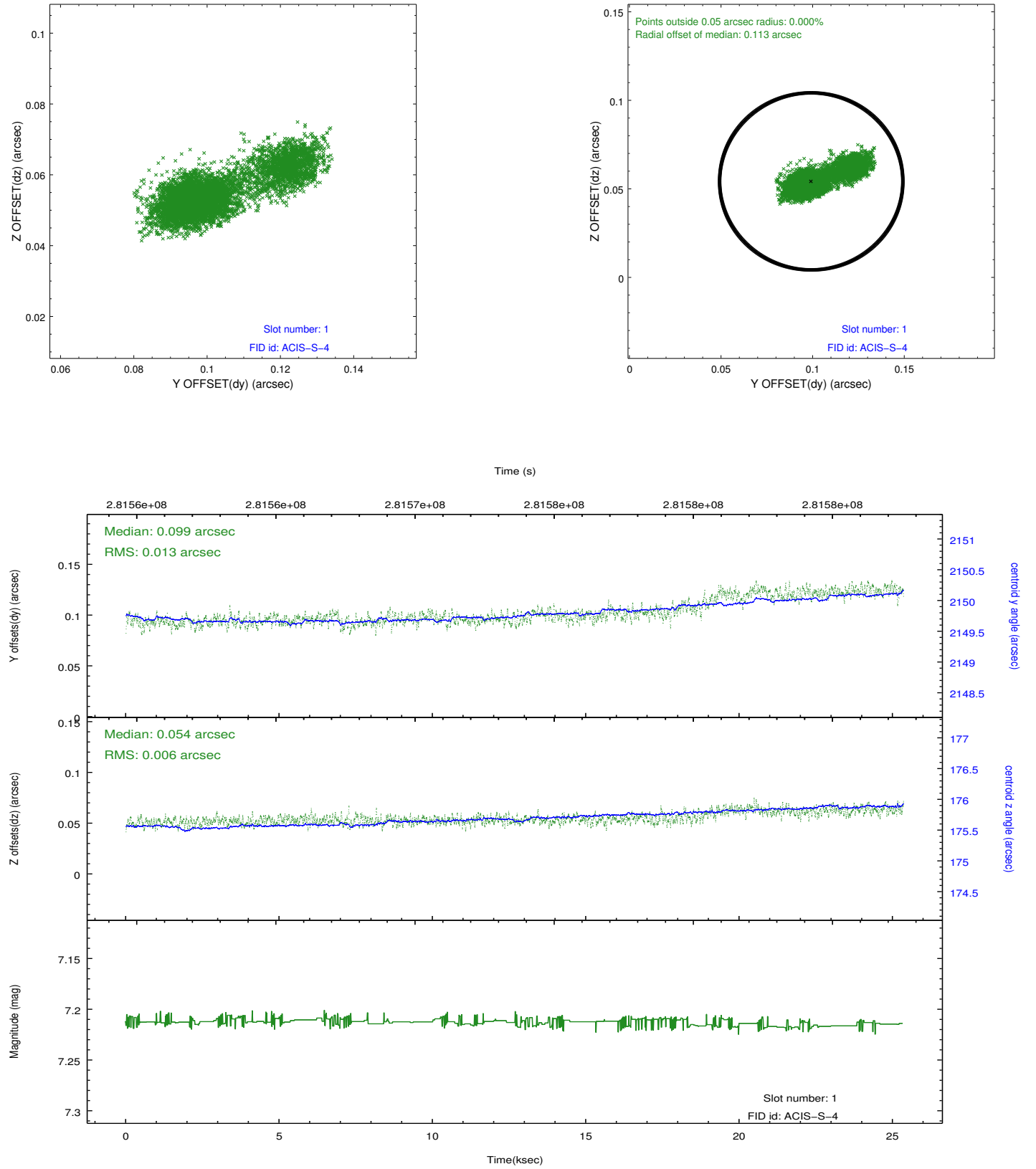


2.5 FID Slots

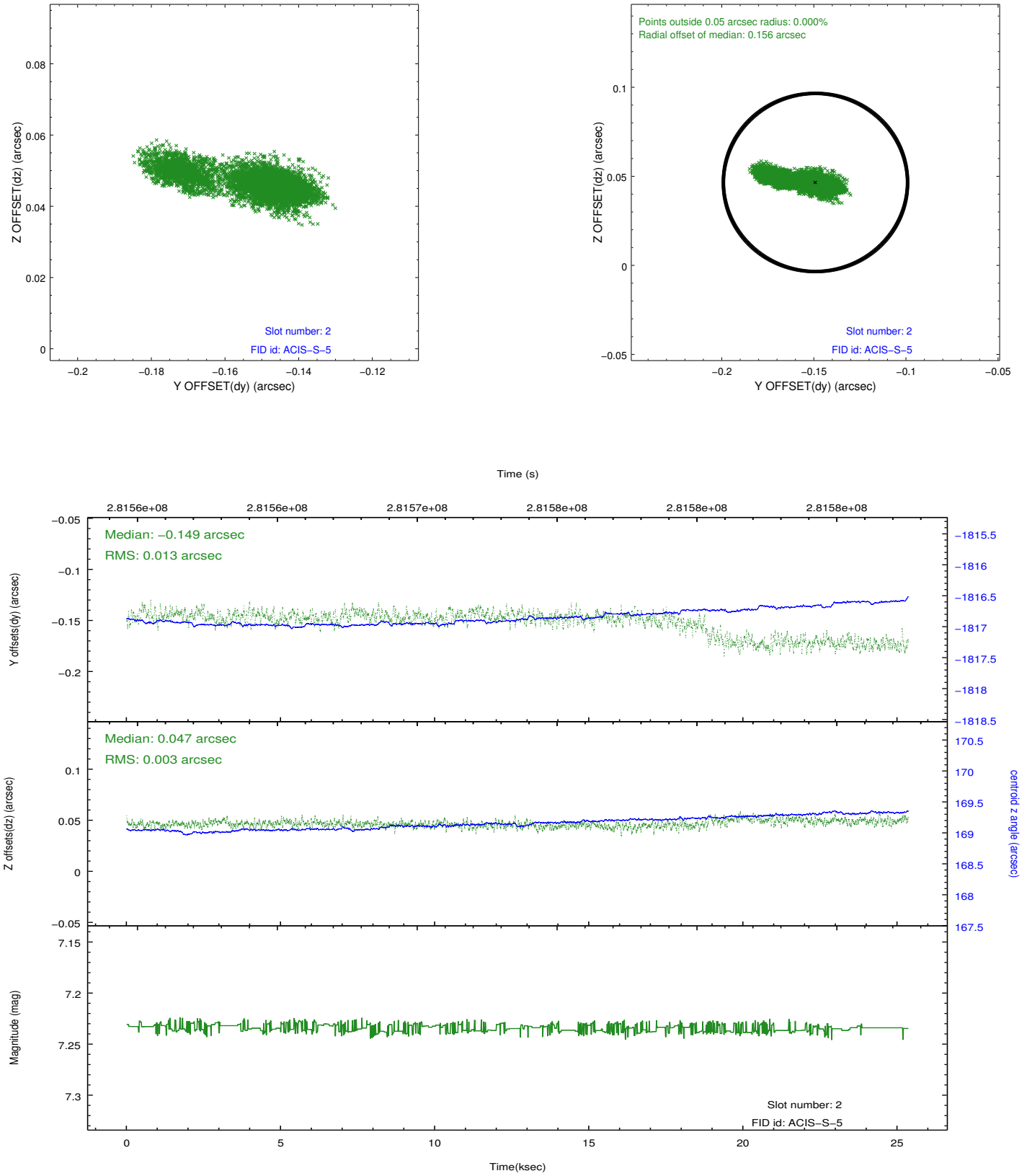
2.5.1 Slot 0



2.5.2 Slot 1

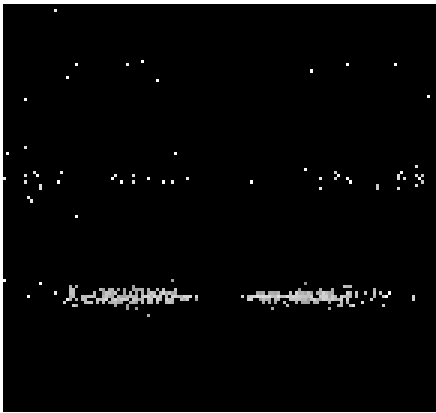


2.5.3 Slot 2

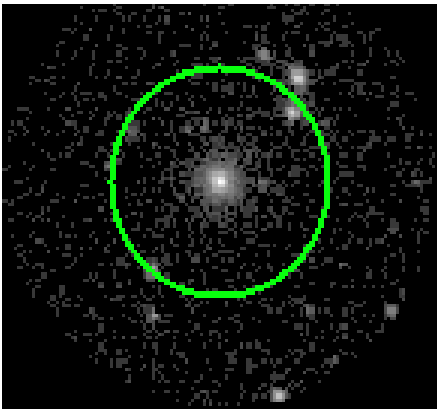


3 Gratings

3.1 HEG Arm



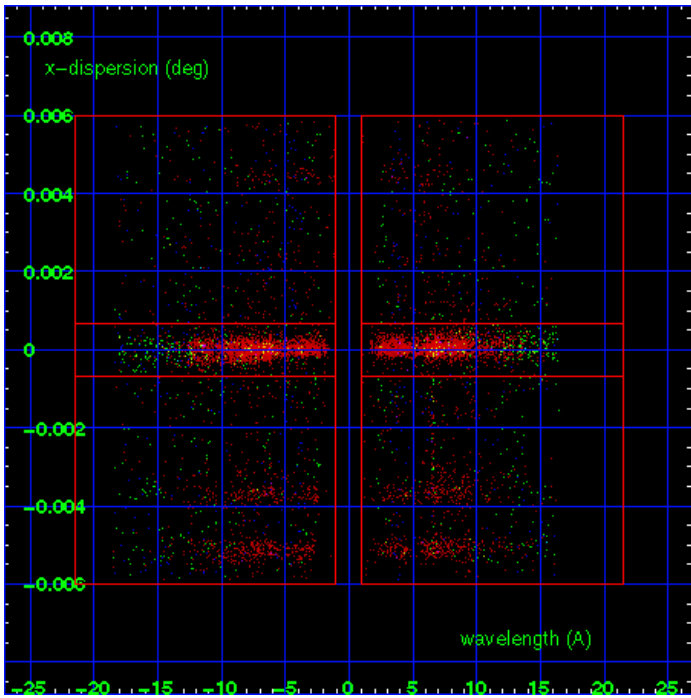
HEG Order Sort 123



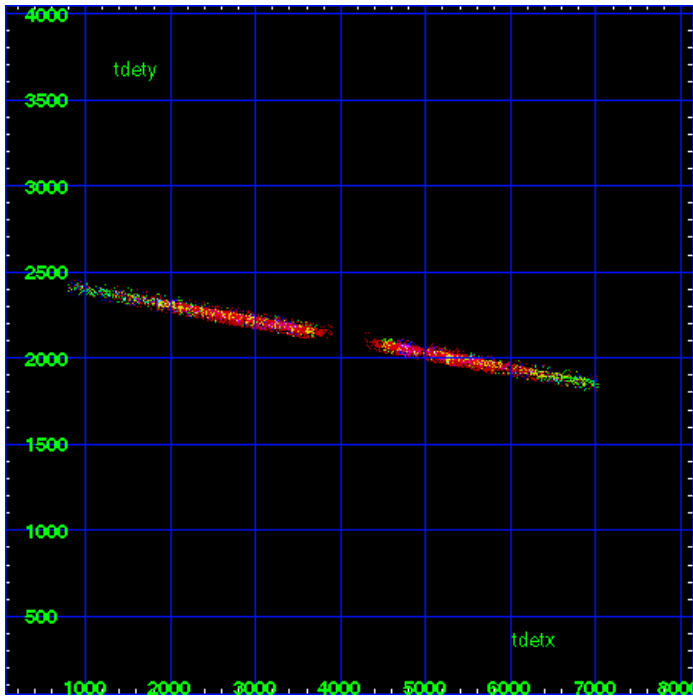
HEG Zero Order



HEG Order Sort ALL

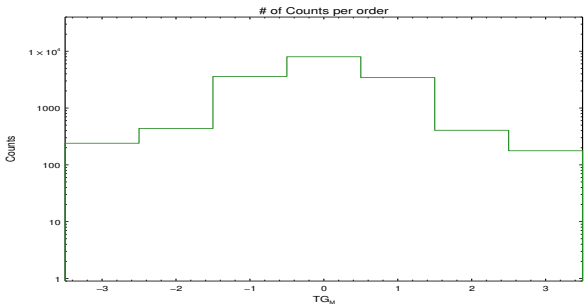


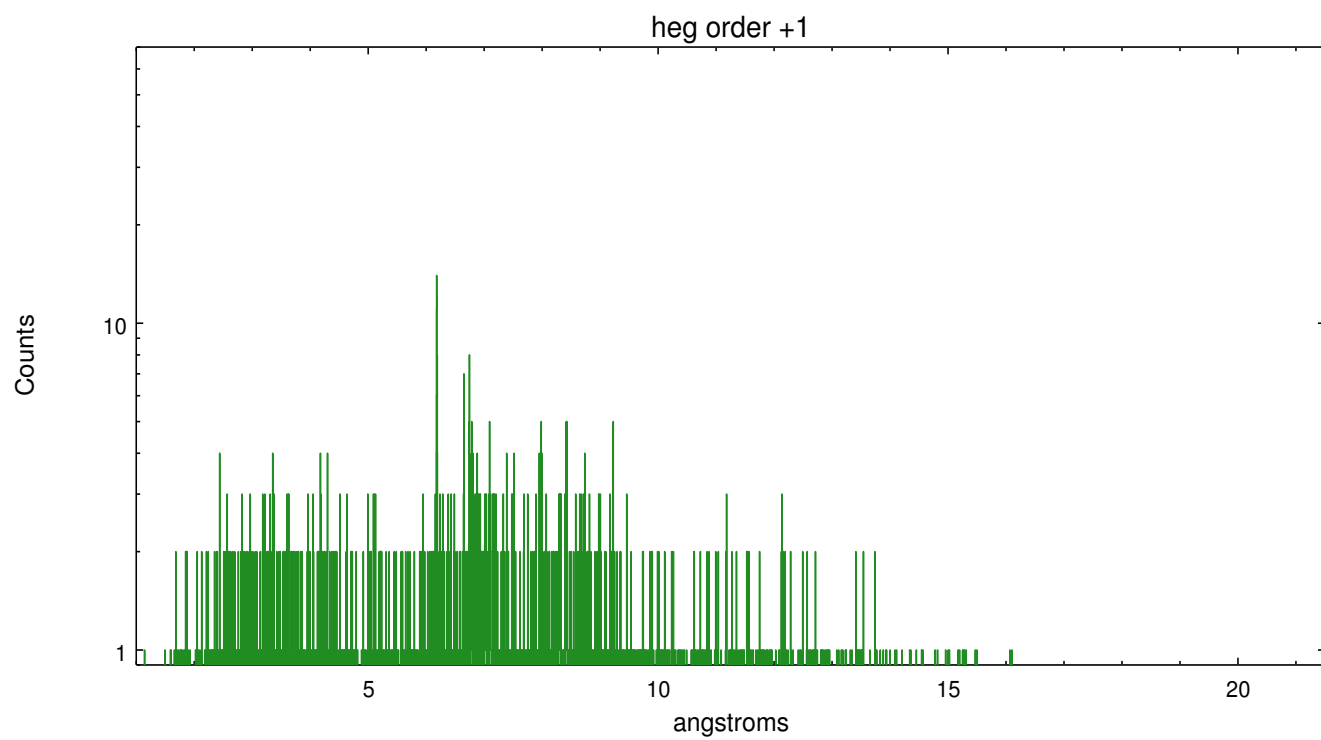
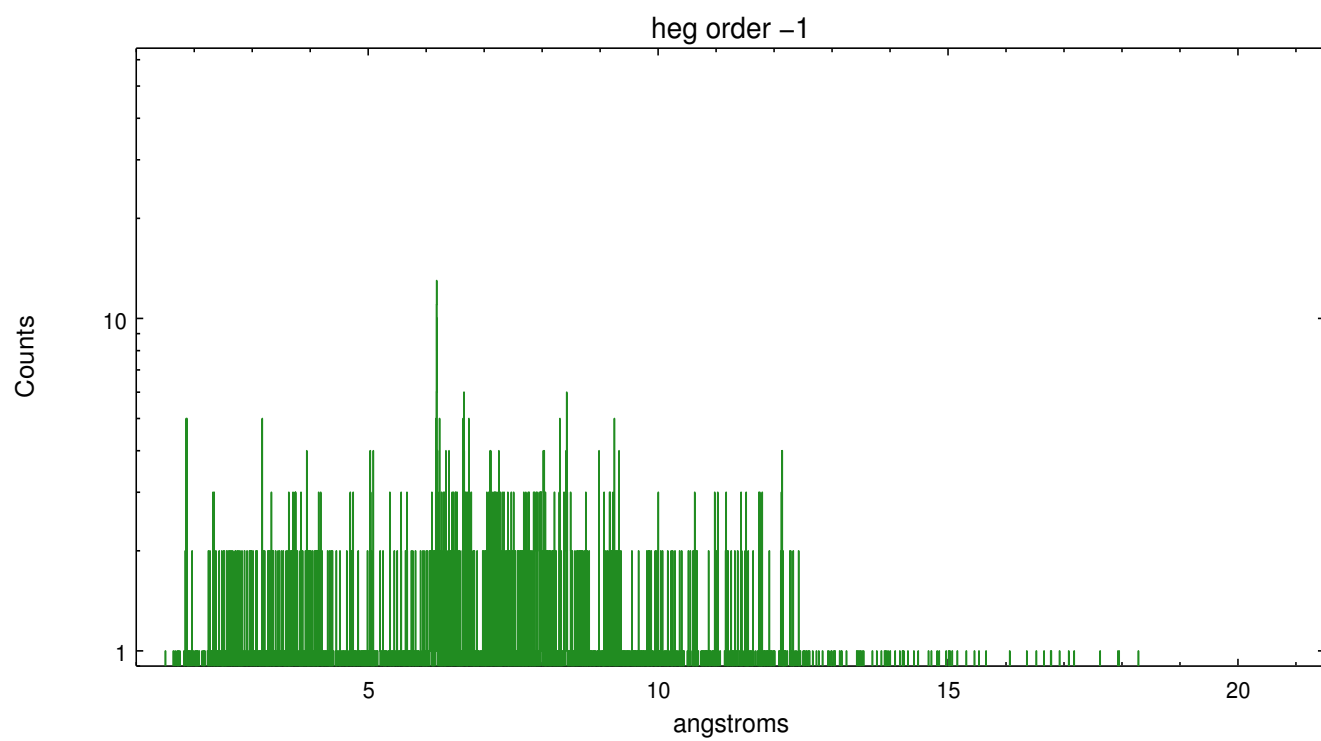
Spot Image HEG



Full Detector HEG

	order -3	order -2	order -1	order 0	order 1	order 2	order 3
Events	240	438	3608	8002	3434	406	177

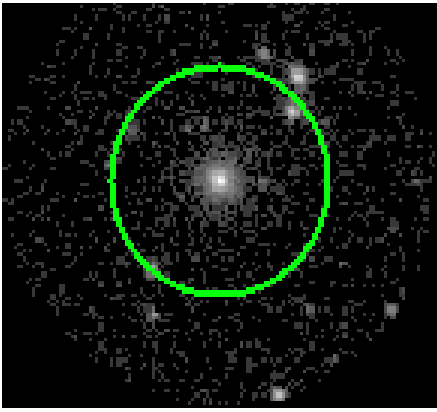




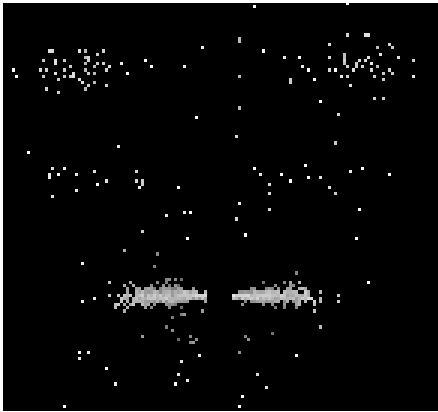
3.2 MEG Arm



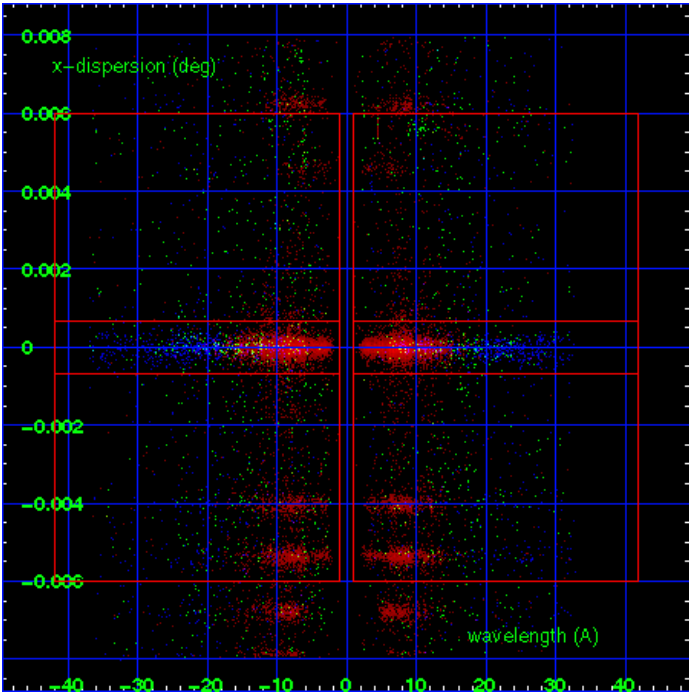
MEG Order Sort 123



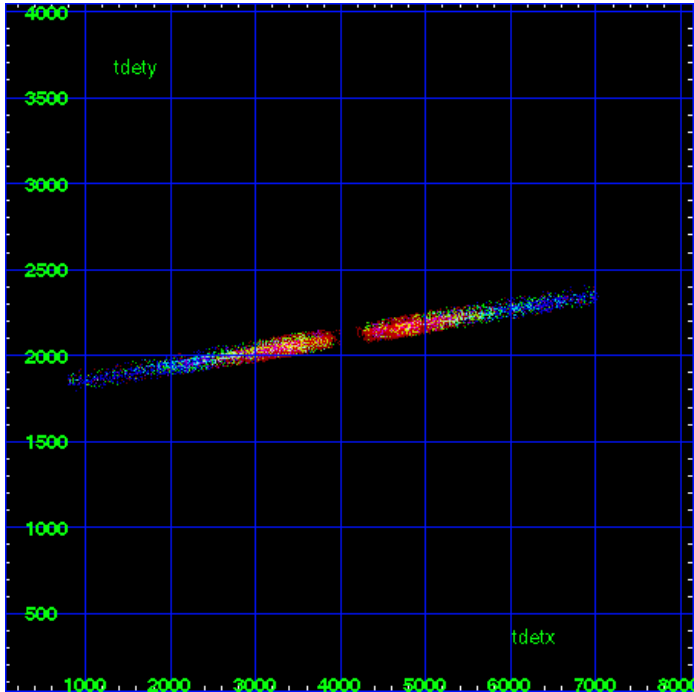
MEG Zero Order



MEG Order Sort ALL

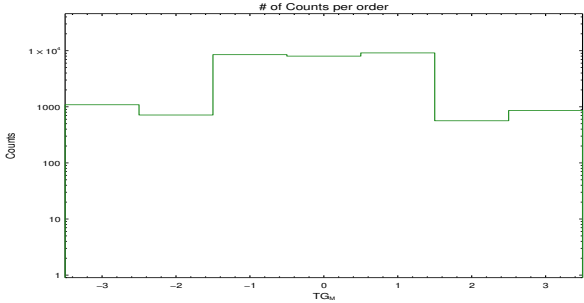


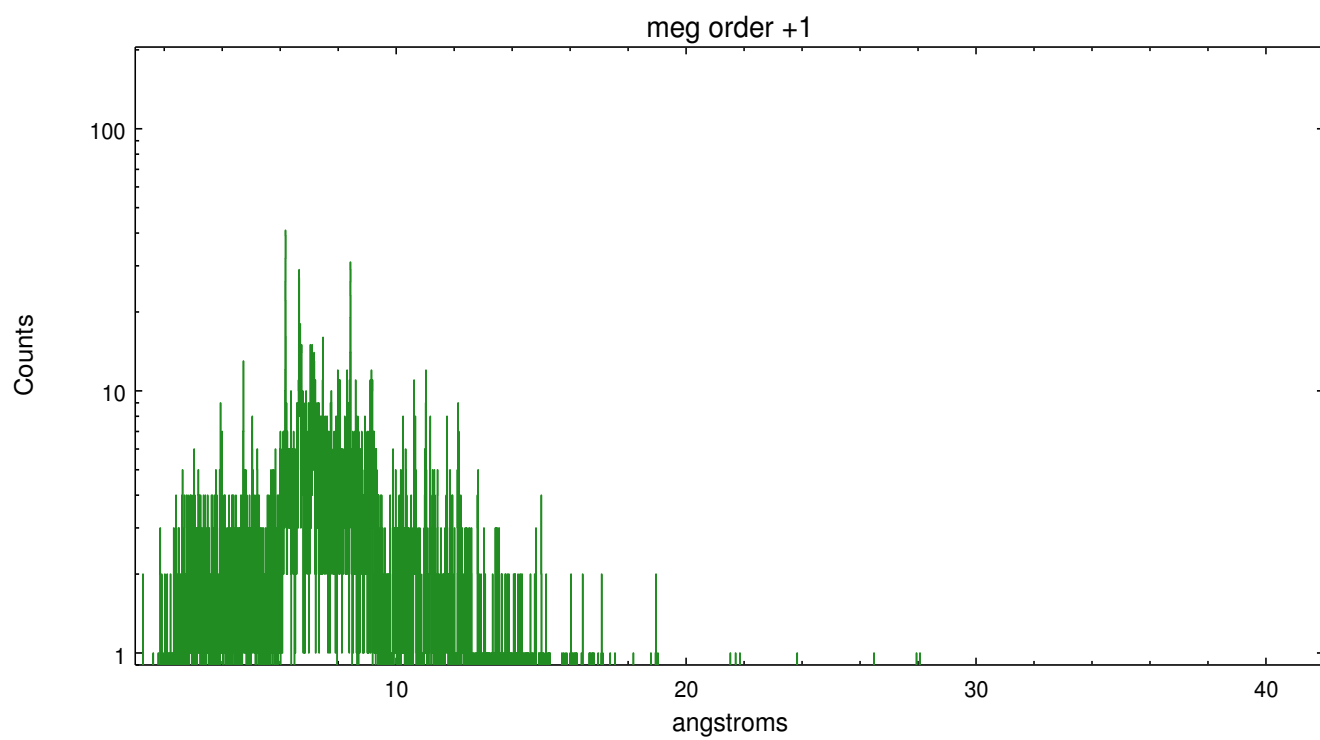
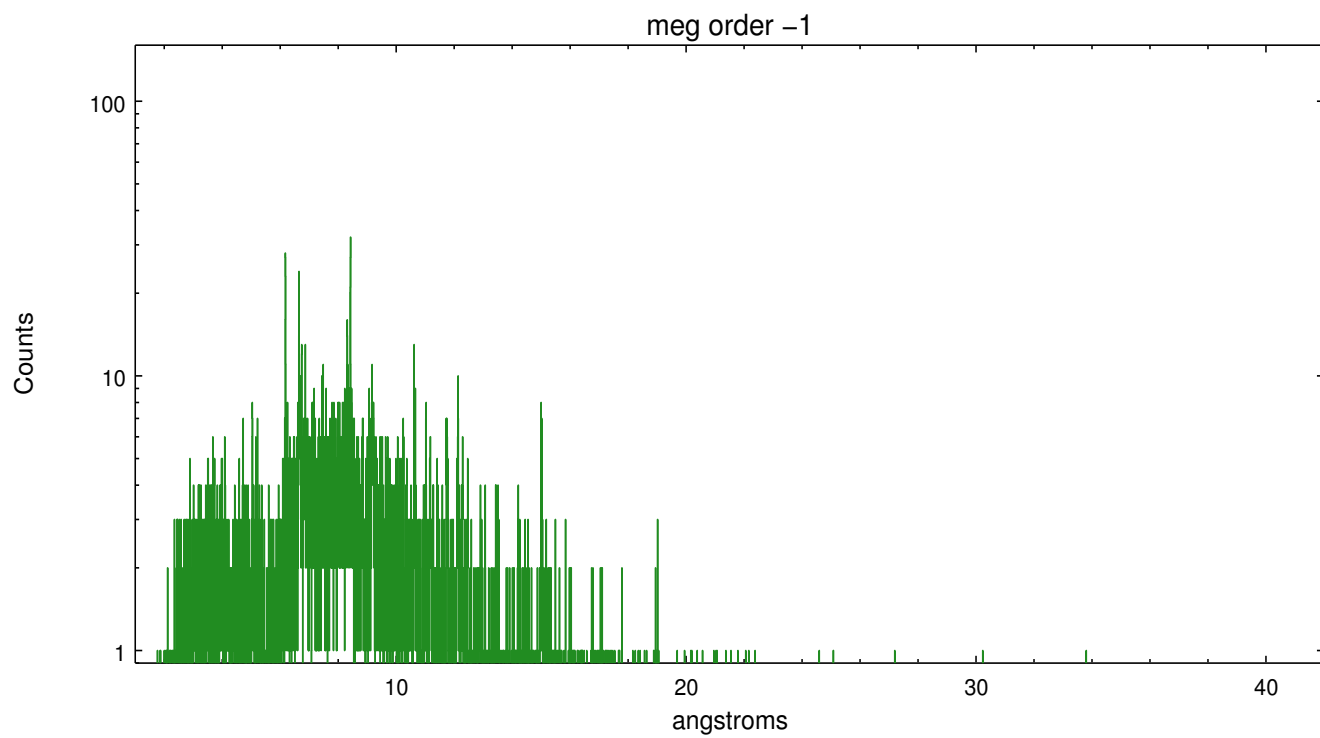
Spot Image MEG



Full Detector MEG

	order -3	order -2	order -1	order 0	order 1	order 2	order 3
Events	1088	714	8500	8002	9135	564	859





A Summary

A.1 Status

V&V Scientist	Joy Nichols
V&V Date (YYYY-MM-DD)	2012.04.18
V&V Edition	1
V&V Disposition and Status	OK
V&V Charge Time	24.9503999

A.2 Comments

Warning: Multiple sources in the field, some of which have dispersed spectra, may cause contamination of the primary extraction or background at some wavelengths. Extraction is of theta 1 Ori C.