

V&V Reference Report

L2 ASCDS Version : 7.6.10

Observation 727 - L2 Version 001
Chandra X-Ray Center

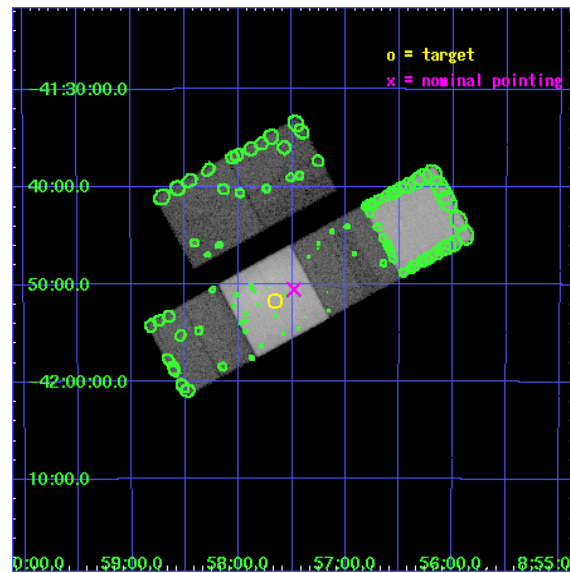
L2 Processing Date : Jun 6 2007

Contents

1	Front	2
2	OBI	3
2.1	OBI	3
2.1.1	Images	3
2.1.2	Bias	3
2.1.3	Parameters	4
2.1.4	Events	4
2.2	Compared Parameters	5
2.3	Aspect	6
2.4	Star Slots	9
2.4.1	Slot 3	9
2.4.2	Slot 4	10
2.4.3	Slot 5	11
2.4.4	Slot 6	12
2.4.5	Slot 7	13
2.5	FID Slots	14
2.5.1	Slot 0	14
2.5.2	Slot 1	15
2.5.3	Slot 2	16
3	Point Sources	17
A	Summary	18
A.1	Status	18
A.2	Comments	18

1 Front

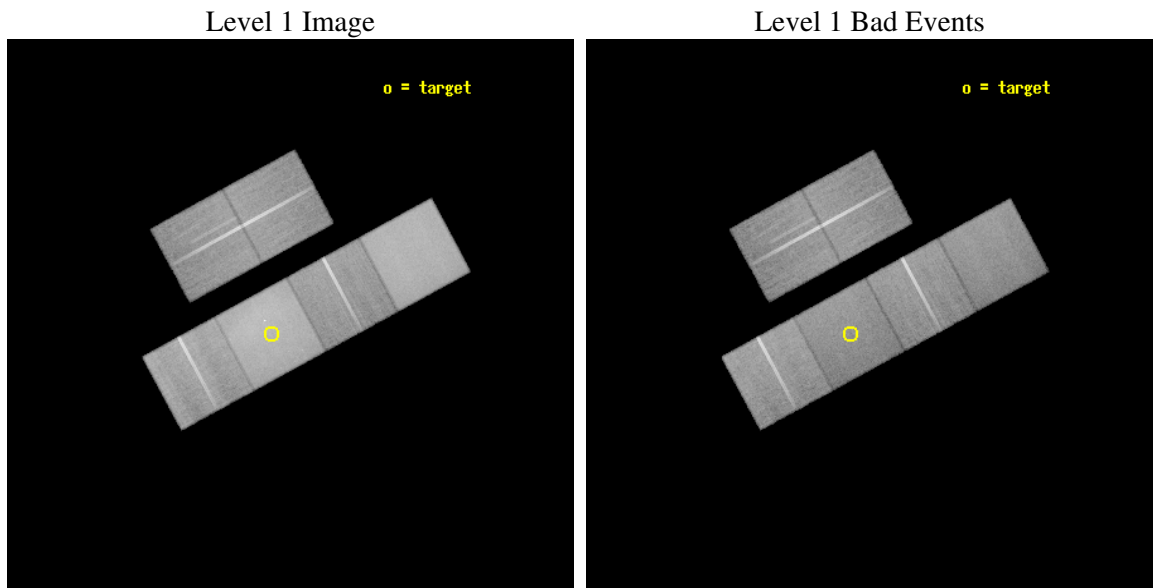
seq_num	500023
obs_id	727
title	SPATIAL STRUCTURE OF THE SHRAPNEL INJECTED FROM THE SUPERNOVA EXPLOSION
observer	PROFESSOR HIROSHI TSUNEMI
object	VELA SHRAPNEL A
dtcycle	0
cycle	P
ra_targ	134.415833
dec_targ	-41.863
ra_nom	134.37070032046
dec_nom	-41.842641222205
roll_nom	151.52264146394
revision	2
ontime	46652.759033367
livetime	46062.013707568
ontime2	46652.759033367
ontime3	46652.759033367
ontime5	46649.518103063
ontime6	46652.759033367
ontime7	46652.759033367
ontime8	46646.277172744
l2events	691746



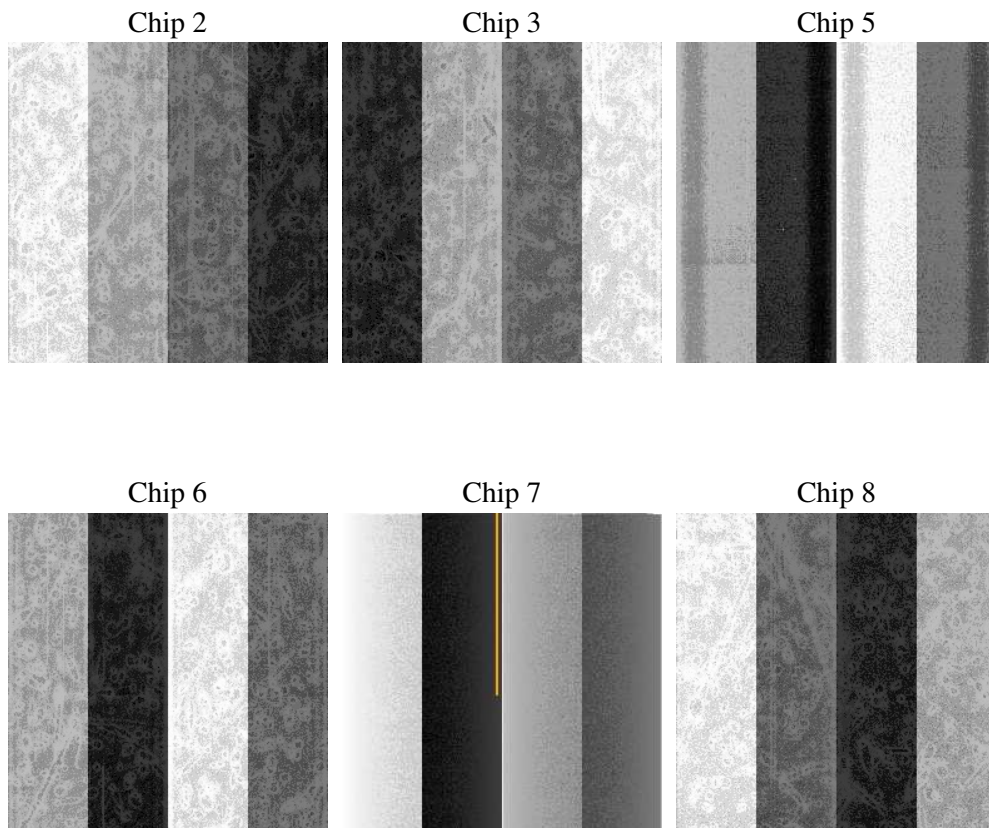
2 OBI

2.1 OBI

2.1.1 Images



2.1.2 Bias



2.1.3 Parameters

obi_num	0
ascdsver	7.6.10
caldsver	3.4.0
date	2007-06-06T13:43:15
revision	2

sched_exp_time	46900.000000
ontime	46652.759033367
ontime2	46652.759033367
ontime3	46652.759033367
ontime5	46649.518103063
ontime6	46652.759033367
ontime7	46652.759033367
ontime8	46646.277172744
l1events	2184200

2.1.4 Events

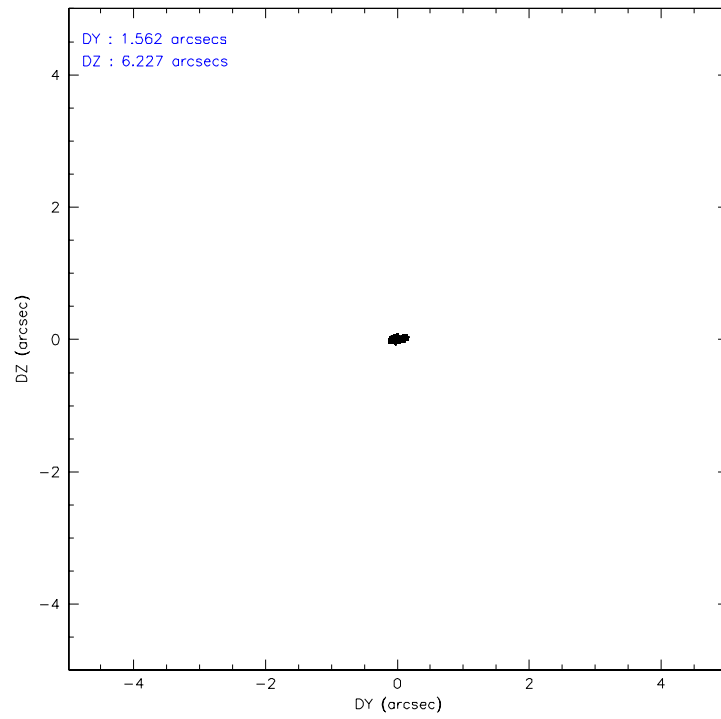
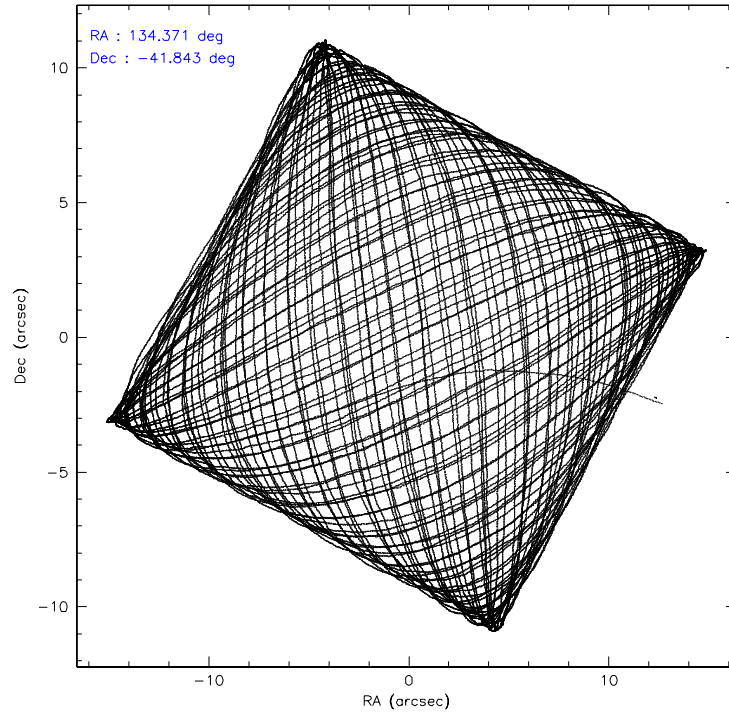
	ccd 2	ccd 3	ccd 5	ccd 6	ccd 7	ccd 8
level 1 events	287569	272507	475863	292664	501352	354245
rejected events	253680	238020	210802	251512	200772	278620
rejected %	88%	87%	44%	85%	40%	78%

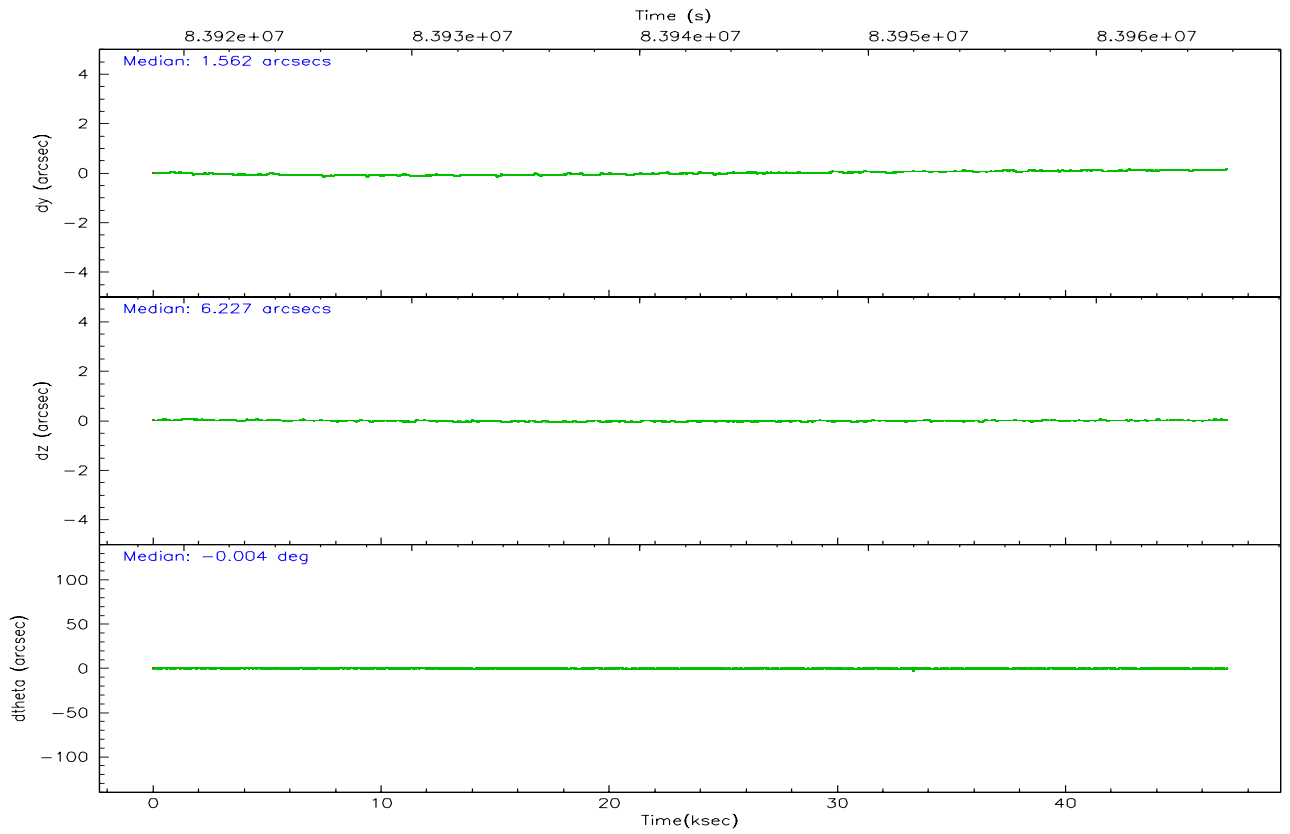
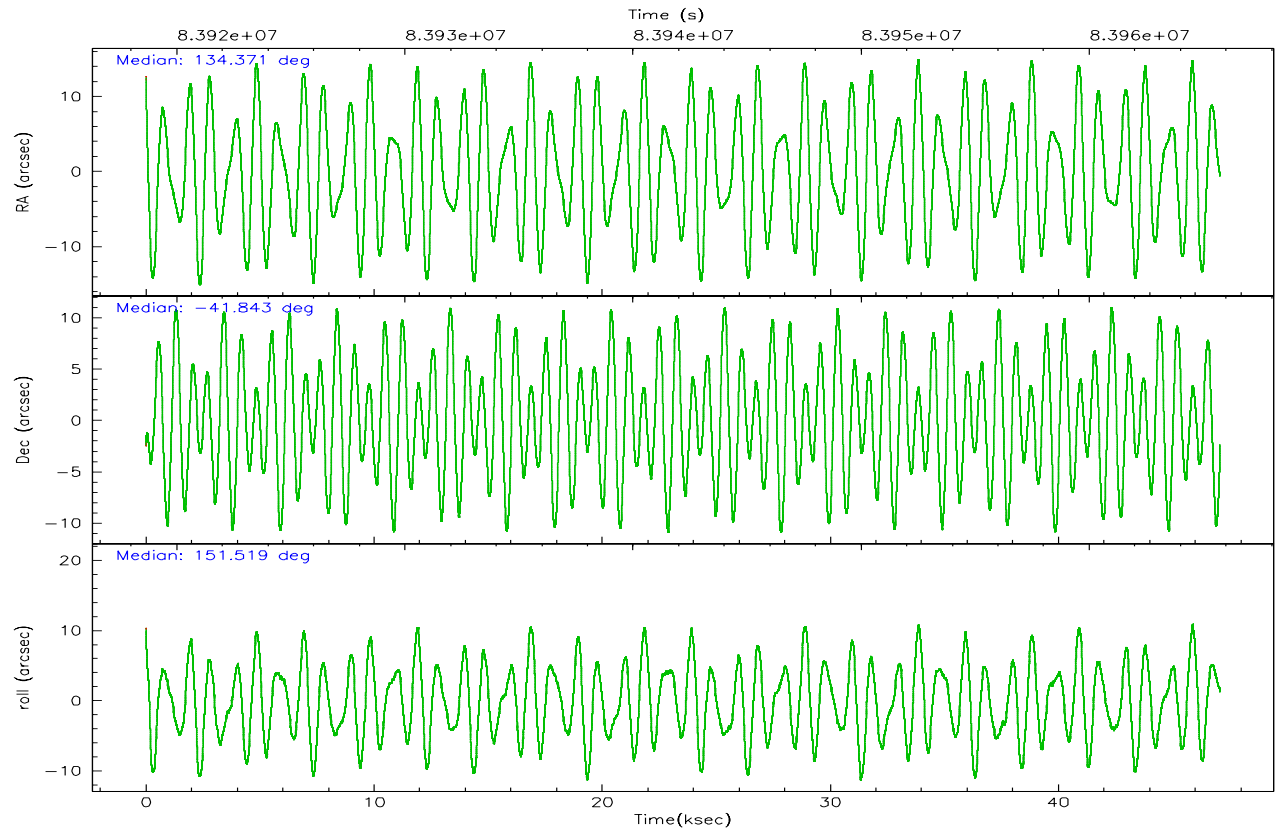
	ccd 2	ccd 3	ccd 5	ccd 6	ccd 7	ccd 8
grade 0 events	15410	16216	32562	20756	48171	27933
	5%	5%	6%	7%	9%	7%
grade 1 events	113	133	419	132	322	239
	0%	0%	0%	0%	0%	0%
grade 2 events	7444	6862	75248	7805	59436	15653
	2%	2%	15%	2%	11%	4%
grade 3 events	2885	2953	14743	3234	27125	7649
	1%	1%	3%	1%	5%	2%
grade 4 events	2783	3056	14594	3228	26714	7060
	0%	1%	3%	1%	5%	1%
grade 5 events	9142	9856	30357	11112	33810	14151
	3%	3%	6%	3%	6%	3%
grade 6 events	5368	5404	127925	6131	139149	17333
	1%	1%	26%	2%	27%	4%
grade 7 events	244424	228027	180015	240266	166625	264227
	84%	83%	37%	82%	33%	74%

2.2 Compared Parameters

Parameter	Planned	Actual	Parameter	Planned	Actual
Instrument	ACIS	ACIS	Obspar format version number	6	6
Detector	ACIS-235678	ACIS-235678	Obspar file type	PREDICTED	ACTUAL
Grating	NONE	NONE	Obspar update status	NONE	UPDATED
Data mode	FAINT	FAINT	Number of optional ACIS chips dropped	0	0
Observation mode	POINTING	POINTING	On-chip summing requested	N	N
Pointing RA	134.407435	134.3707003204561	Subarray requested	NONE	NONE
Pointing Dec	-41.841743	-41.84264122220463	Alternating exposures requested	N	N
Pointing Roll	151.390526	151.5226414639382	Primary exposure time	3.200000	3.2
SIM focus pos (mm)	-0.684267	-0.6828225247311905			
SIM defocus (mm)	0	0.001444936568705701			
SIM translation stage pos (mm)	-190.132523	-190.1400660498719			
SIM translation stage offset (mm)	0	0.00754346686406393			
Observation start time	83918846.184000	83918040.267749			
Observation start date	2000-08-29T06:46:22	2000-08-29T06:34:00			
Observation end time	83965746.184000	83966620.65707301			
Observation end date	2000-08-29T19:48:02	2000-08-29T20:03:40			
Read mode	TIMED	TIMED			

2.3 Aspect



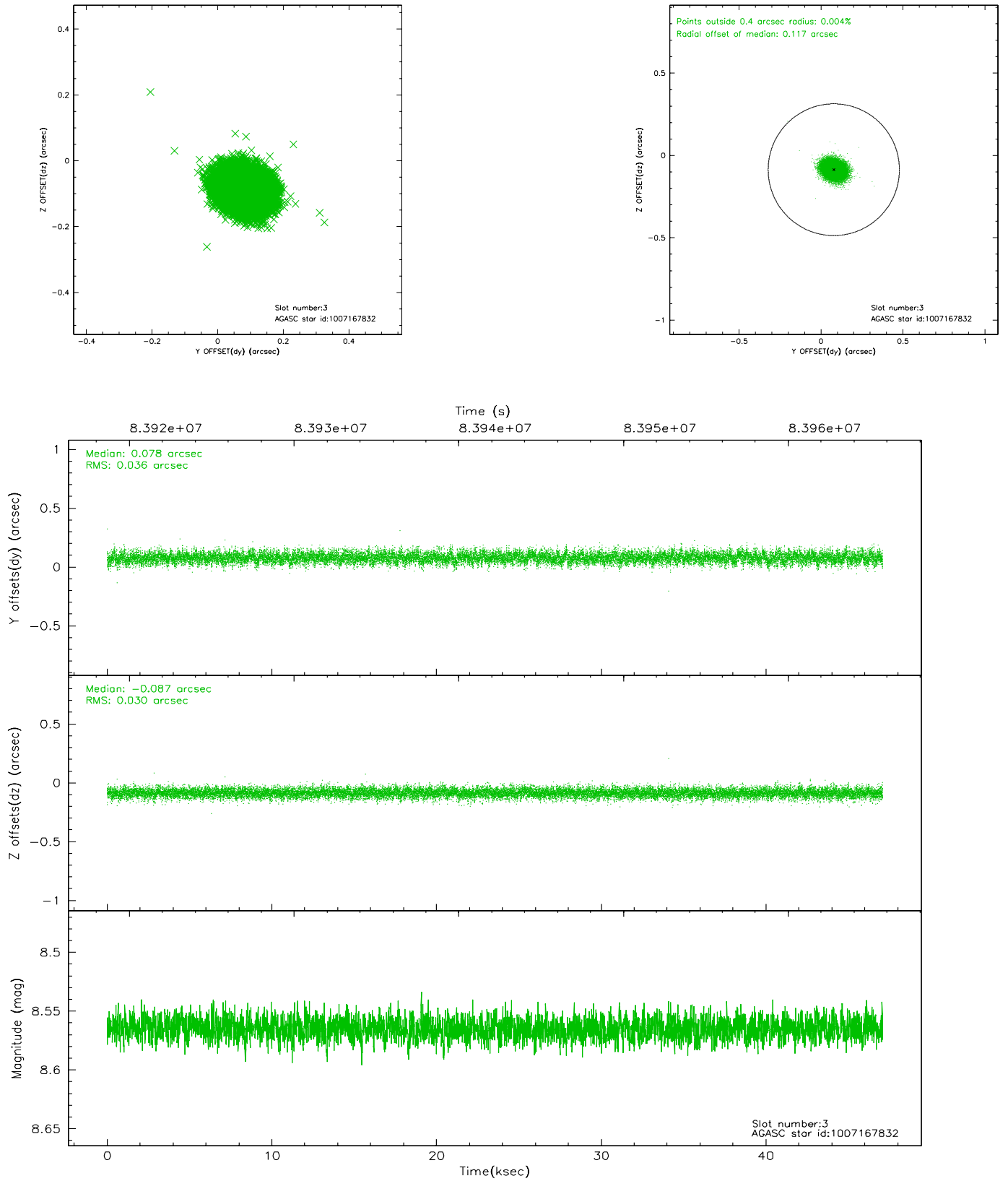


Slot Statistics

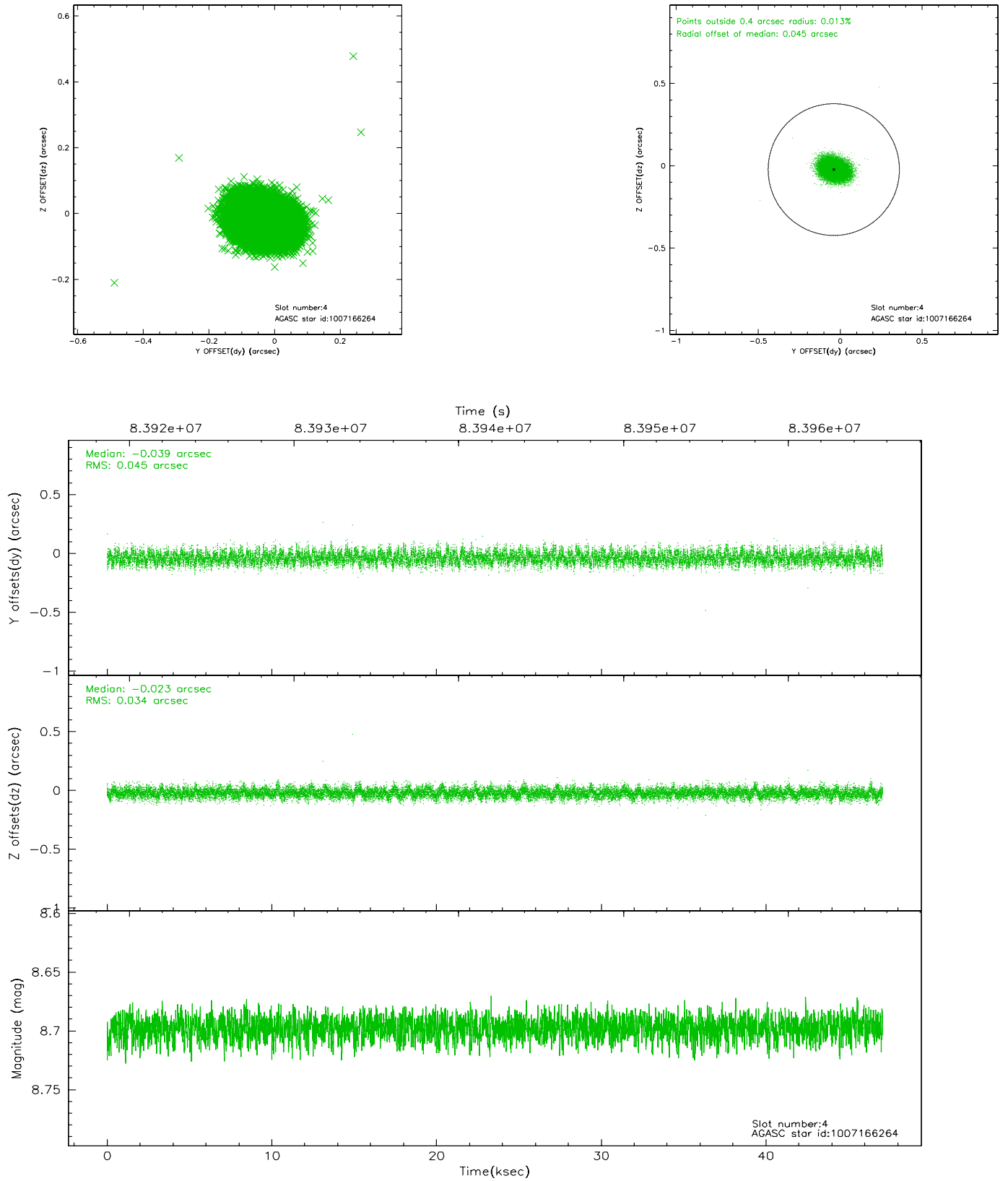
slot	status	id	mag	n_pts	med_dy	med_dz	dr1	dr2	ra	dec	mean_y	mean_z
0	FID	ACIS-S-2	7.11	11487	-0.018	0.033	0.007	0.011	0.000000	0.000000	-754.18	-1727.34
1	FID	ACIS-S-4	7.21	11486	-0.075	0.000	0.005	0.009	0.000000	0.000000	2159.04	181.13
2	FID	ACIS-S-5	7.23	11486	0.062	-0.025	0.006	0.010	0.000000	0.000000	-1806.96	174.75
3	GUIDE	1007167832	8.56	22967	0.078	-0.087	0.050	0.082	134.896670	-42.234541	-1823.71	620.52
4	GUIDE	1007166264	8.70	22967	-0.039	-0.023	0.059	0.097	133.519609	-41.981542	1838.69	1590.85
5	GUIDE	1007299992	8.79	22959	-0.078	0.020	0.060	0.099	135.528658	-41.595420	-2234.83	-2206.32
6	GUIDE	1007164632	9.11	22966	0.019	0.064	0.070	0.115	133.982398	-41.492579	1606.62	-551.74
7	GUIDE	1007166840	9.22	22962	0.020	0.026	0.081	0.131	134.066276	-42.158137	252.95	1437.94

2.4 Star Slots

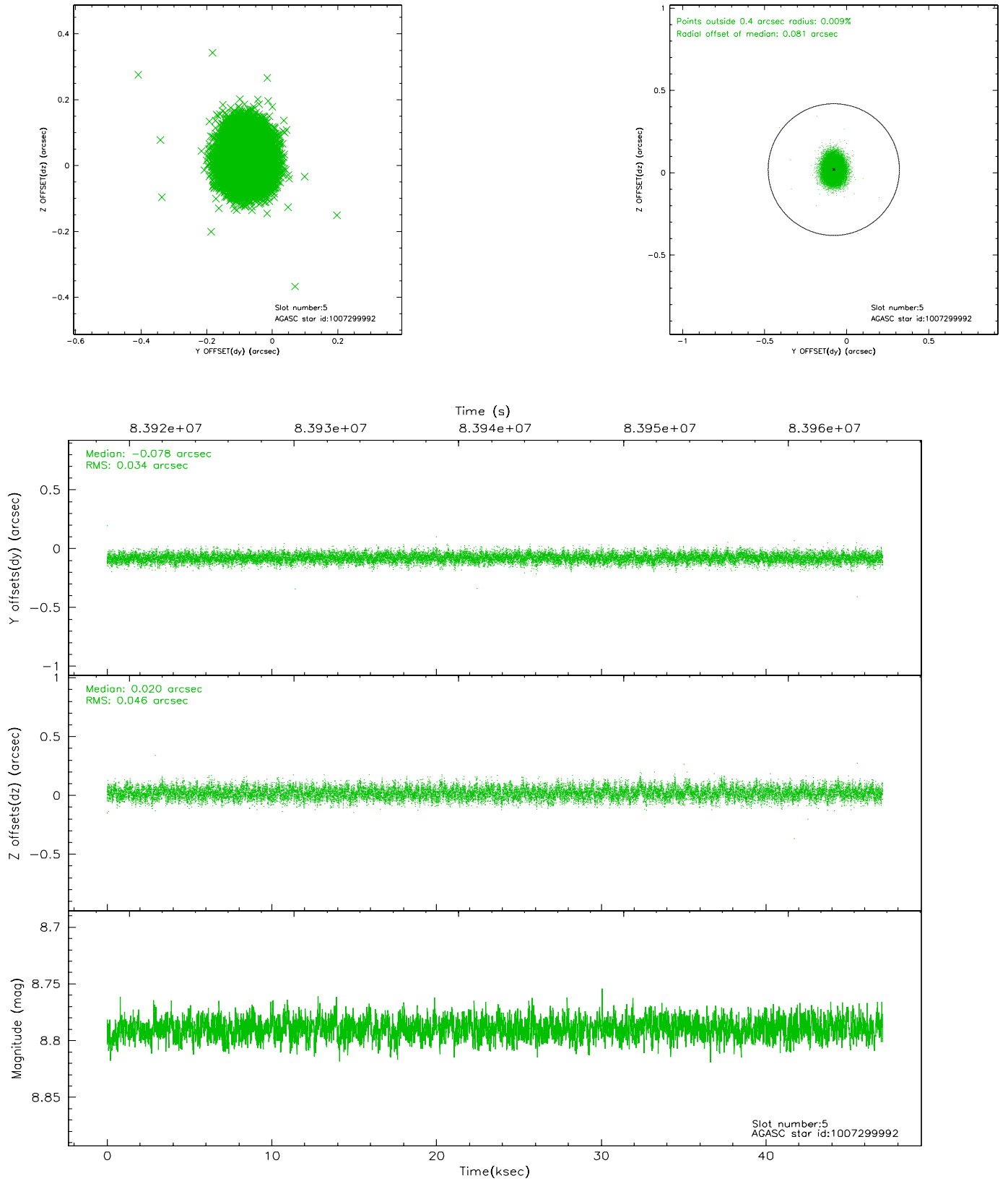
2.4.1 Slot 3



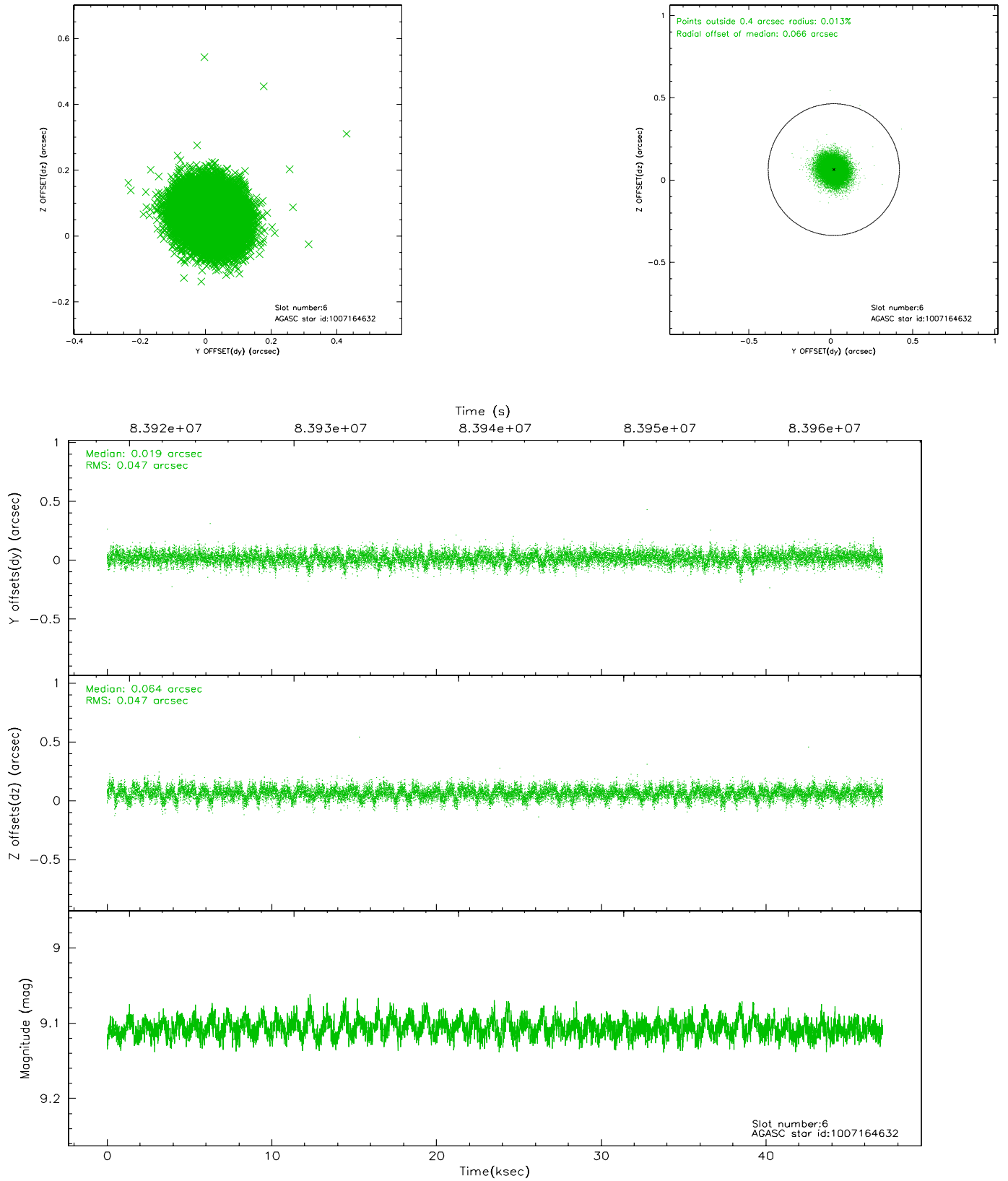
2.4.2 Slot 4



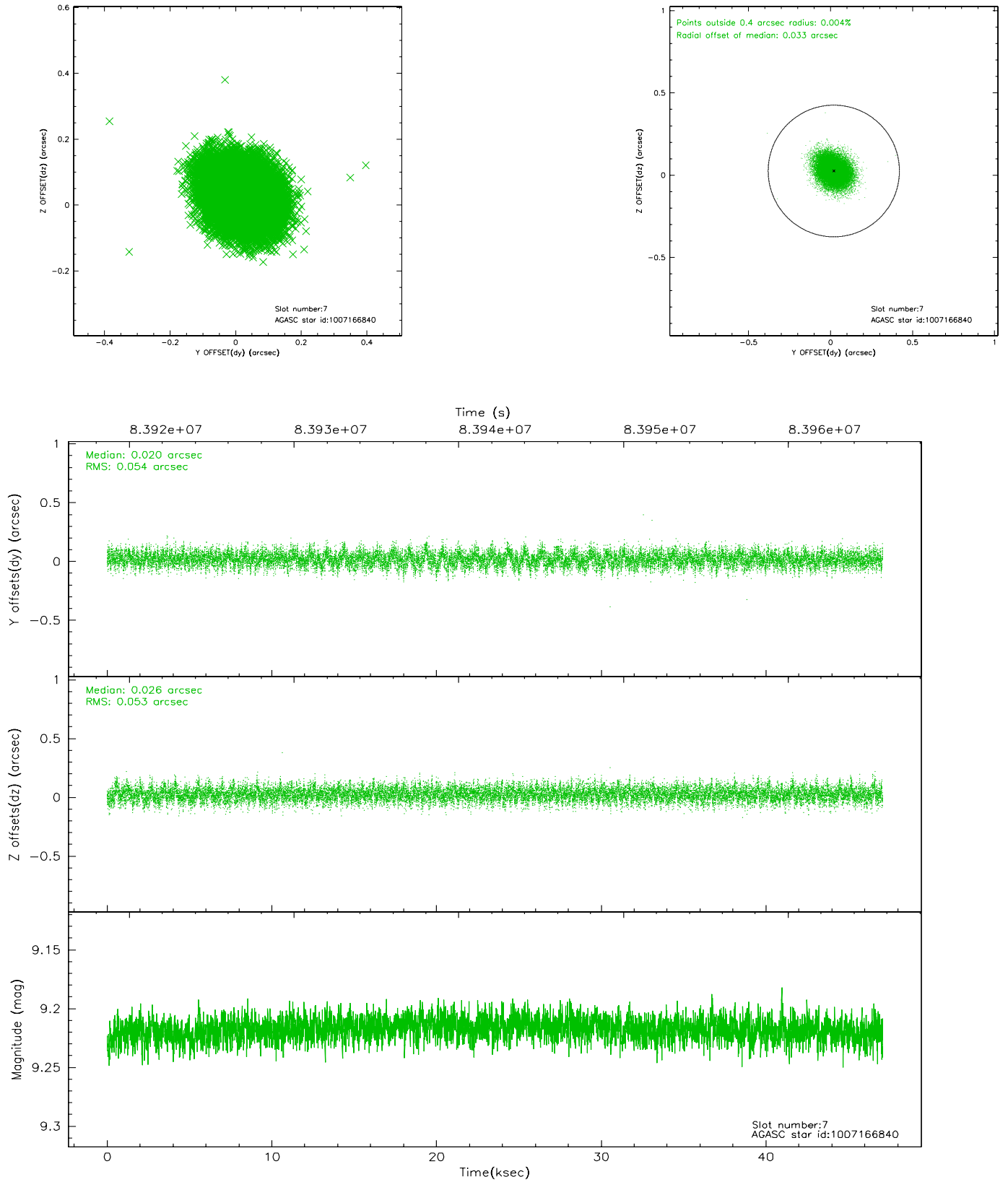
2.4.3 Slot 5



2.4.4 Slot 6

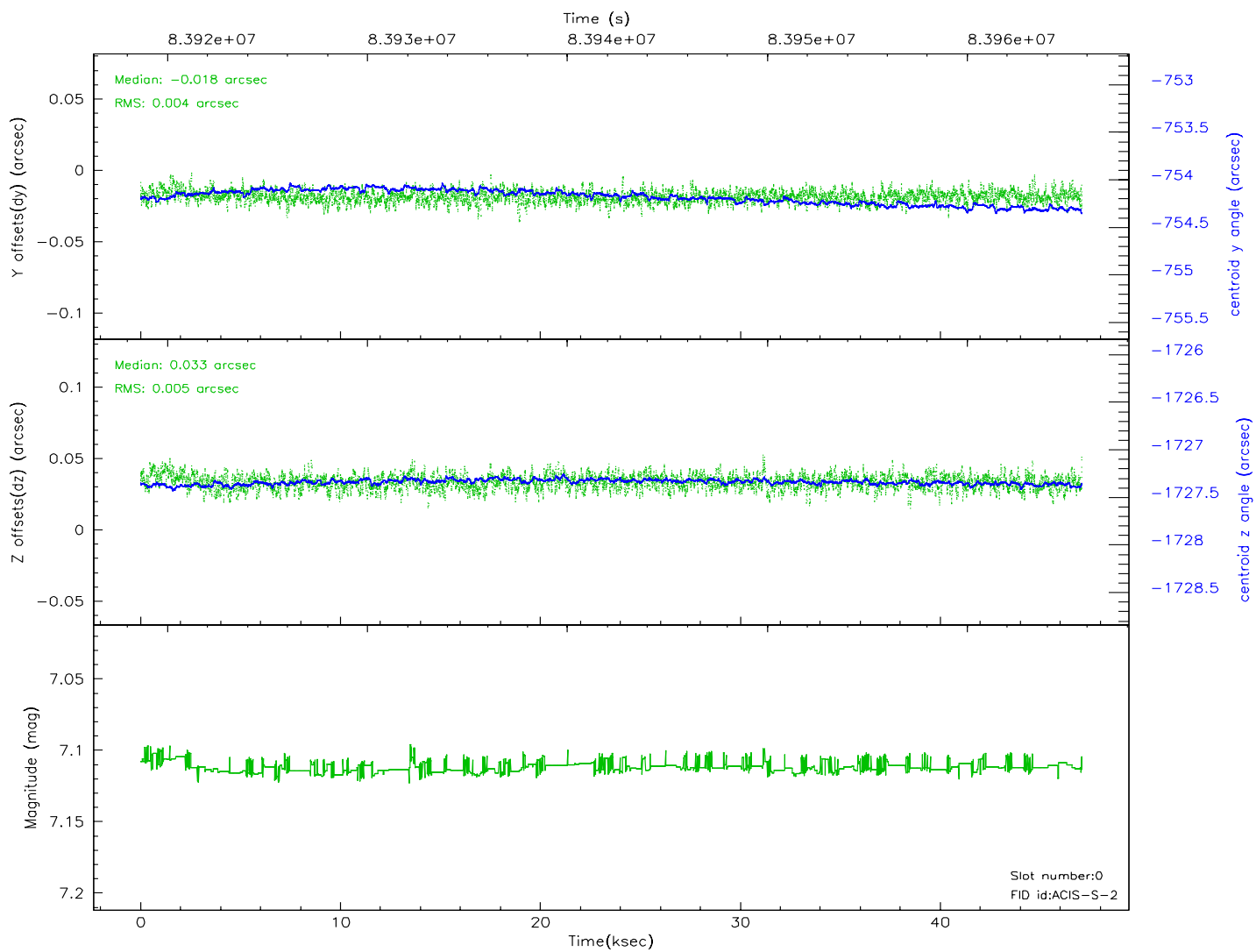
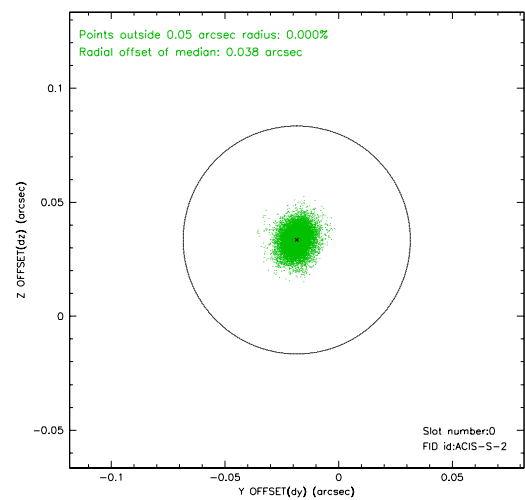
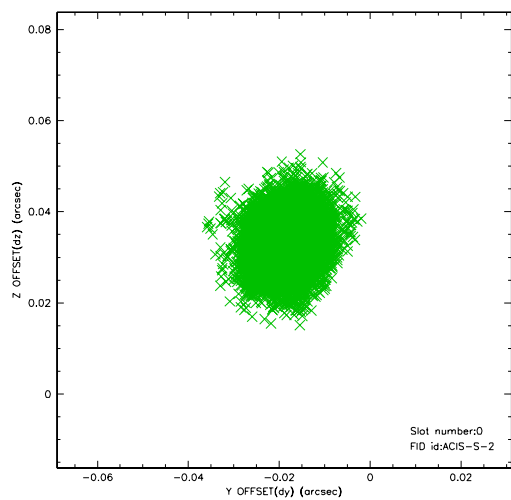


2.4.5 Slot 7

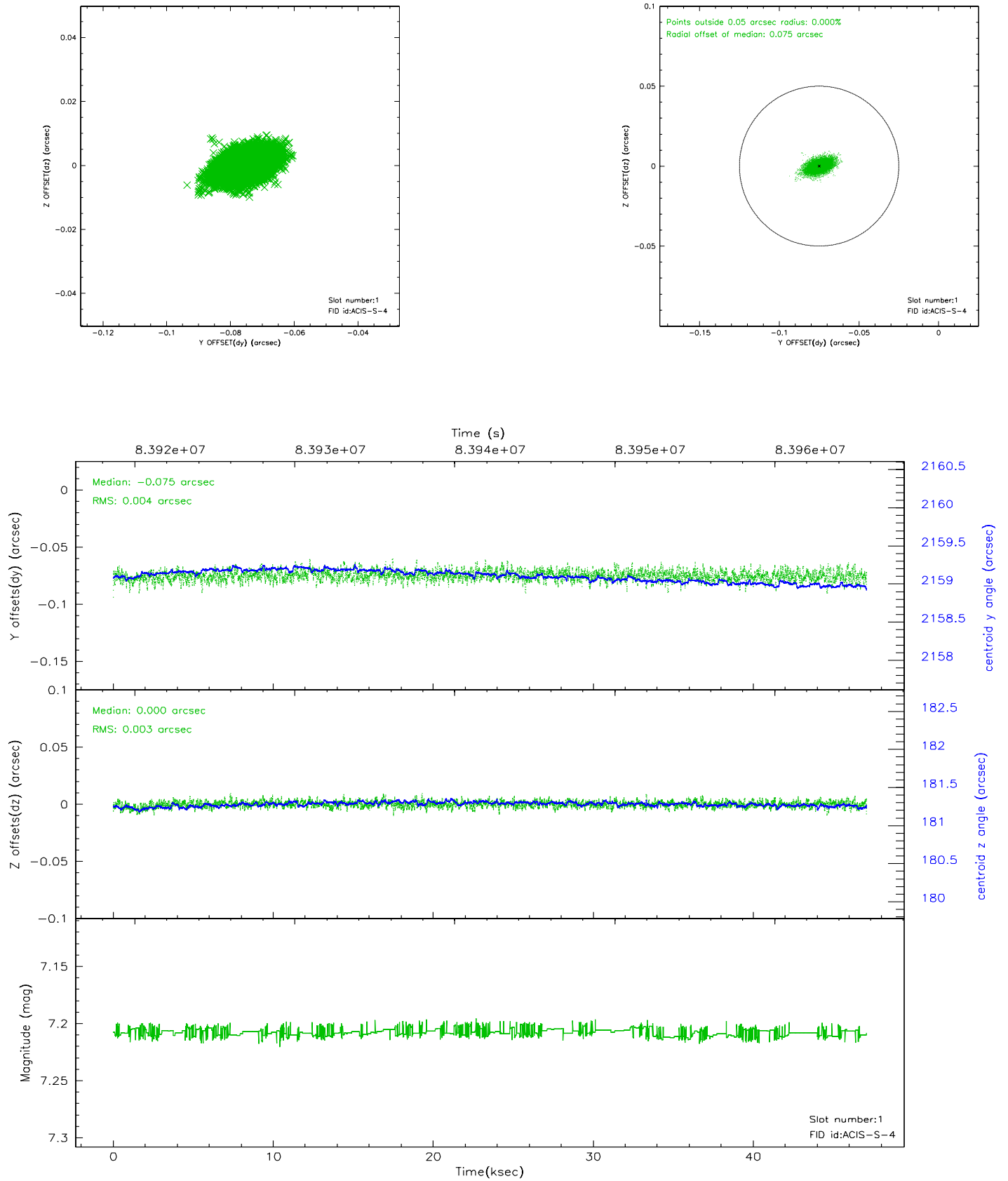


2.5 FID Slots

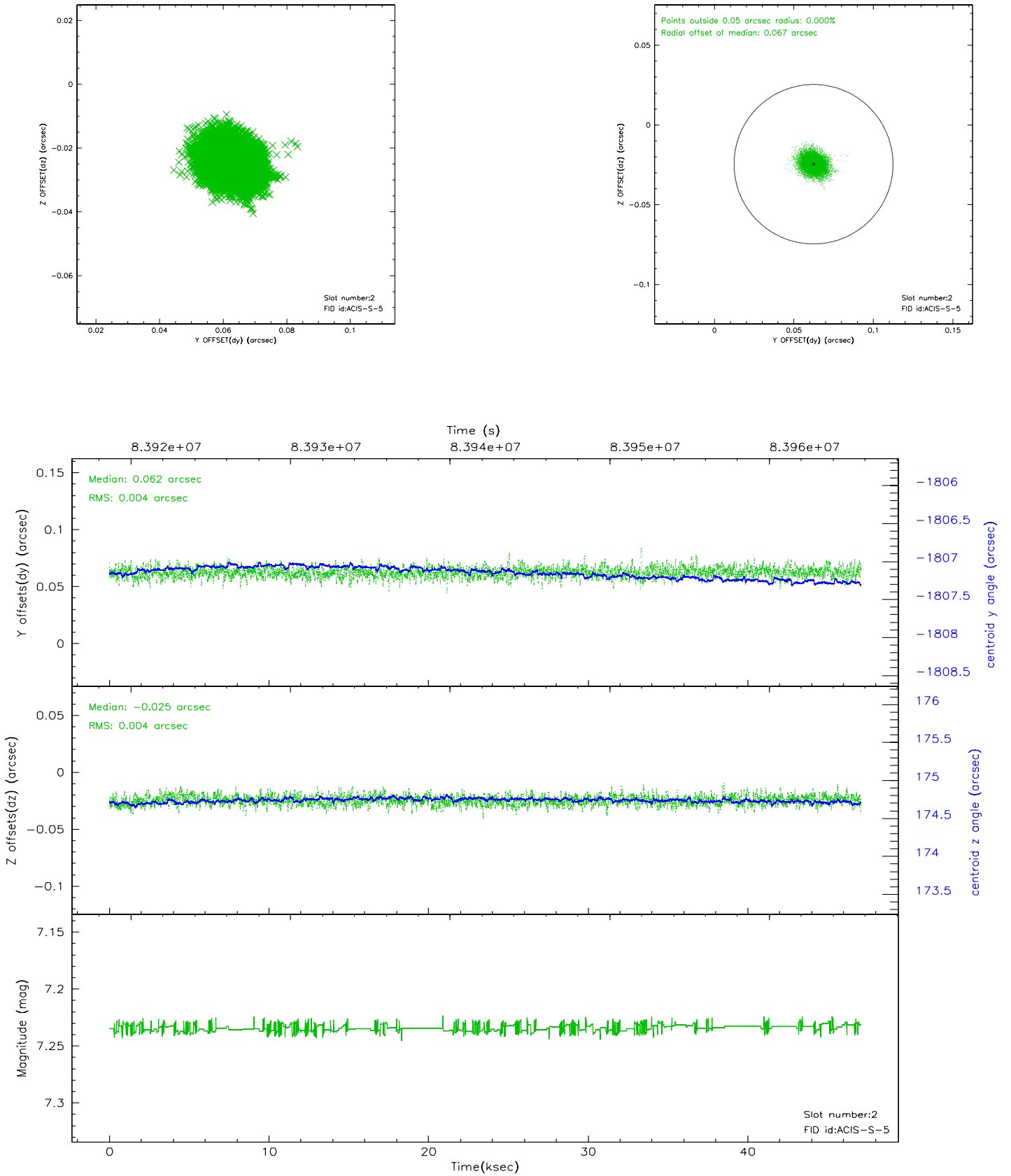
2.5.1 Slot 0



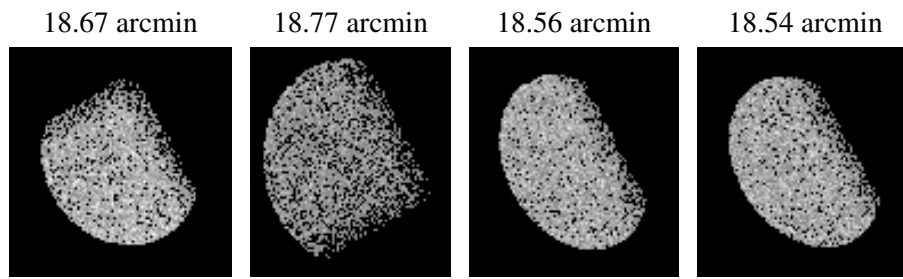
2.5.2 Slot 1



2.5.3 Slot 2



3 Point Sources



A Summary

A.1 Status

V&V Scientist	Jen Lauer
V&V Date (YYYY-MM-DD)	2007.06.06
V&V Edition	1
V&V Disposition and Status	OK
V&V Charge Time	46.652

A.2 Comments