

V&V Reference Report

L2 ASCDS Version : 8.5.1.1

Observation 7197 - L2 Version 3
Chandra X-Ray Center

L2 Processing Date : Dec 31 2012

Contents

1	Front	2
2	OBI	3
2.1	OBI	3
2.1.1	Images	3
2.1.2	Bias	3
2.1.3	Parameters	4
2.1.4	Events	4
2.2	Compared Parameters	5
2.3	Aspect	6
2.4	Star Slots	9
2.4.1	Slot 3	9
2.4.2	Slot 4	10
2.4.3	Slot 5	11
2.4.4	Slot 6	12
2.4.5	Slot 7	13
2.5	FID Slots	14
2.5.1	Slot 0	14
2.5.2	Slot 1	15
2.5.3	Slot 2	16
A	Summary	17
A.1	Status	17
A.2	Comments	17

1 Front

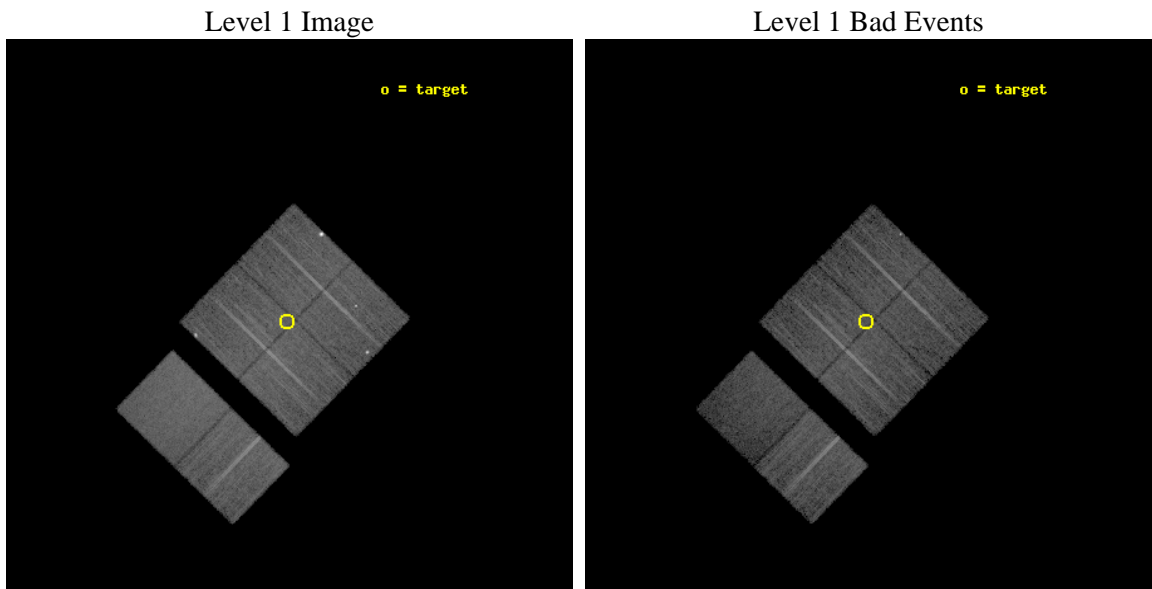
seq_num	600488	Sequence number
obs_id	7197	Observation id
title	The Chandra ACIS Survey of M33 (ChASem33): A Deep Survey of the Nearest Face-on Spiral Galaxy	Proposal title
observer	Dr Manami Sasaki	Principal investigator
object	M33 Field 6	Source name
dtcycle	0	
cycle	P	events from which exps? Prim/Second/Both
ra_targ	23.532083	Observer's specified target RA [deg]
dec_targ	30.509111	Observer's specified target Dec [deg]
ra_nom	23.527063694833	Nominal RA [deg]
dec_nom	30.507374134061	Nominal Dec [deg]
roll_nom	224.21122331291	Nominal Roll [deg]
revision	3	Processing version of data
ontime	12812.717971772	Sum of GTIs [s]
livetime	12650.475621921	Livetime [s]
ontime0	12819.199952245	Sum of GTIs [s]
ontime1	12819.199952245	Sum of GTIs [s]
ontime2	12819.199952245	Sum of GTIs [s]
ontime3	12812.717971772	Sum of GTIs [s]
ontime6	12815.958981991	Sum of GTIs [s]
ontime7	12819.199952245	Sum of GTIs [s]
l2events	92731	Number of level 2 events



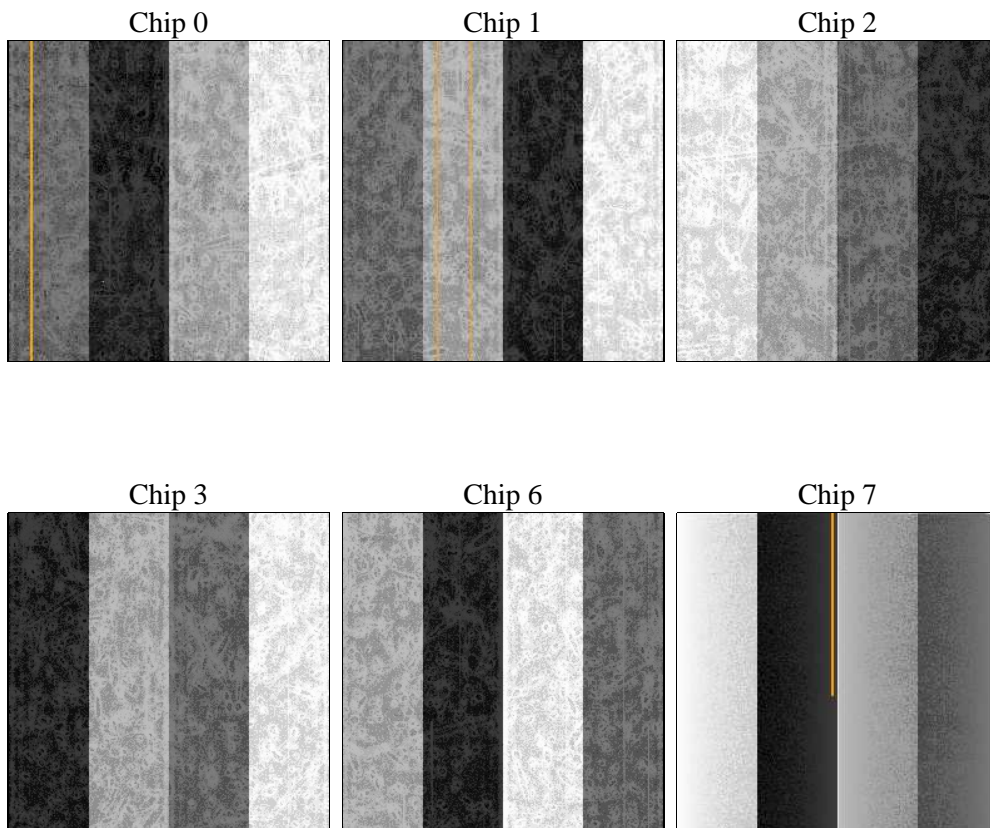
2 OBI

2.1 OBI

2.1.1 Images



2.1.2 Bias



2.1.3 Parameters

obi_num	0	Obi number	sched_exp_time	13000.000000	[s] Scheduled observation exposure time
ascdsver	8.5.1.1	Processing system revision	ontime	12812.717971772	Sum of GTIs [s]
caldsver	4.5.5	 	ontime0	12819.199952245	Sum of GTIs [s]
date	2012-12-31T09:41:27	Date and time of file creation	ontime1	12819.199952245	Sum of GTIs [s]
revision	3	Processing version of data	ontime2	12819.199952245	Sum of GTIs [s]
			ontime3	12812.717971772	Sum of GTIs [s]
			ontime6	12815.958981991	Sum of GTIs [s]
			ontime7	12819.199952245	Sum of GTIs [s]
			l1events	529635	Number of level 1 events

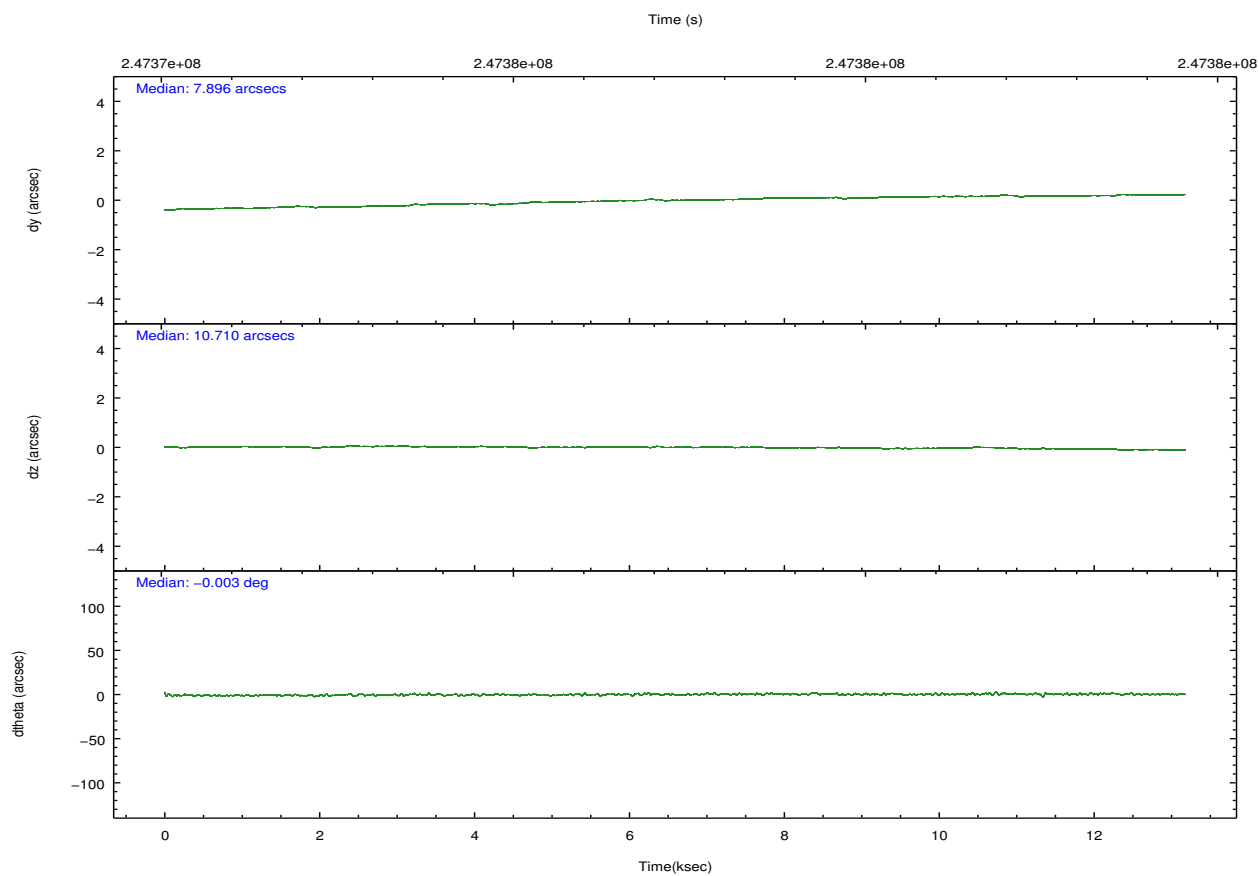
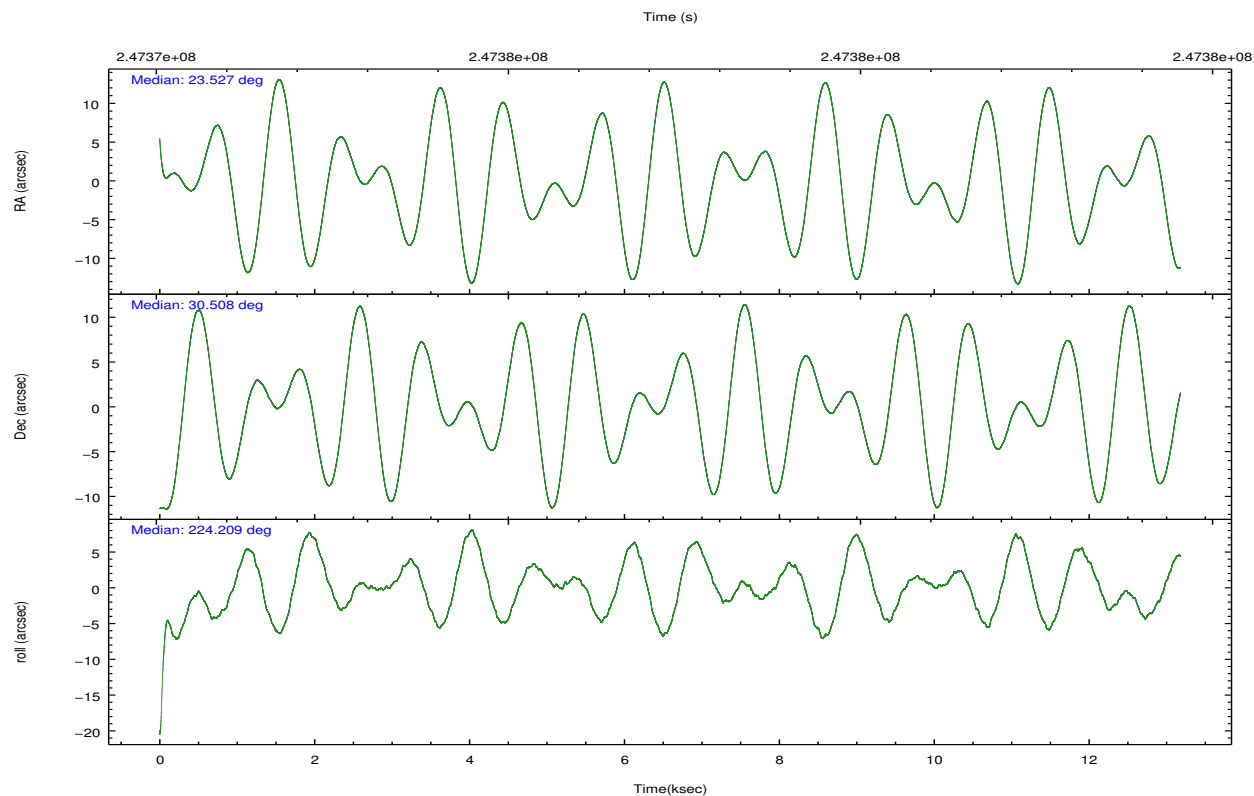
2.1.4 Events

	ccd 0	ccd 1	ccd 2	ccd 3	ccd 6	ccd 7		ccd 0	ccd 1	ccd 2	ccd 3	ccd 6	ccd 7
level 1 events	81368	91689	89500	84338	88685	94055	grade 0 events	6059	13993	2881	4503	2971	3416
rejected events	69092	68855	81492	74217	80023	51672		7%	15%	3%	5%	3%	3%
rejected %	84%	75%	91%	87%	90%	54%	grade 1 events	56	250	44	37	33	72
								0%	0%	0%	0%	0%	0%
							grade 2 events	2370	3647	1933	1927	1922	8246
								2%	3%	2%	2%	2%	8%
							grade 3 events	1115	1469	874	1081	1005	3940
								1%	1%	0%	1%	1%	4%
							grade 4 events	1049	1421	884	986	900	3962
								1%	1%	0%	1%	1%	4%
							grade 5 events	2798	3402	2753	3509	3526	9999
								3%	3%	3%	4%	3%	10%
							grade 6 events	1689	2309	1440	1625	1868	22828
								2%	2%	1%	1%	2%	24%
							grade 7 events	66232	65198	78691	70670	76460	41592
								81%	71%	87%	83%	86%	44%

2.2 Compared Parameters

Parameter	Planned	Actual	Parameter	Planned	Actual
Instrument	ACIS	ACIS	Obspar format version number	7	7
Detector	ACIS-012367	ACIS-012367	Obspar file type	PREDICTED	ACTUAL
Grating	NONE	NONE	Obspar update status	NONE	UPDATED
Data mode	VFAINT	VFAINT	Number of optional ACIS chips dropped	0	0
Observation mode	POINTING	POINTING	On-chip summing requested	N	N
[deg] Pointing RA	23.535589	23.52706369483342	Subarray requested	NONE	NONE
[deg] Pointing Dec	30.533805	30.50737413406119	Alternating exposures requested	N	N
[deg] Pointing Roll	223.998215	224.2112233129142	[s] Primary exposure time	0.000000	3.2
[mm] SIM focus pos	-0.782348	-0.7809083437167272			
[mm] SIM defocus	0	0.001439871863259334			
[mm] SIM translation stage pos	-233.592463	-233.5874344608287			
[mm] SIM translation stage offset	0	-0.005018542100998502			
[s] Observation start time (MET)	247370883.184000	247369936.60563			
Observation start date	2005-11-03T02:06:59	2005-11-03T01:52:16			
[s] Observation end time (MET)	247383883.184000	247384588.98131			
Observation end date	2005-11-03T05:43:39	2005-11-03T05:56:28			
Read mode	TIMED	TIMED			

2.3 Aspect

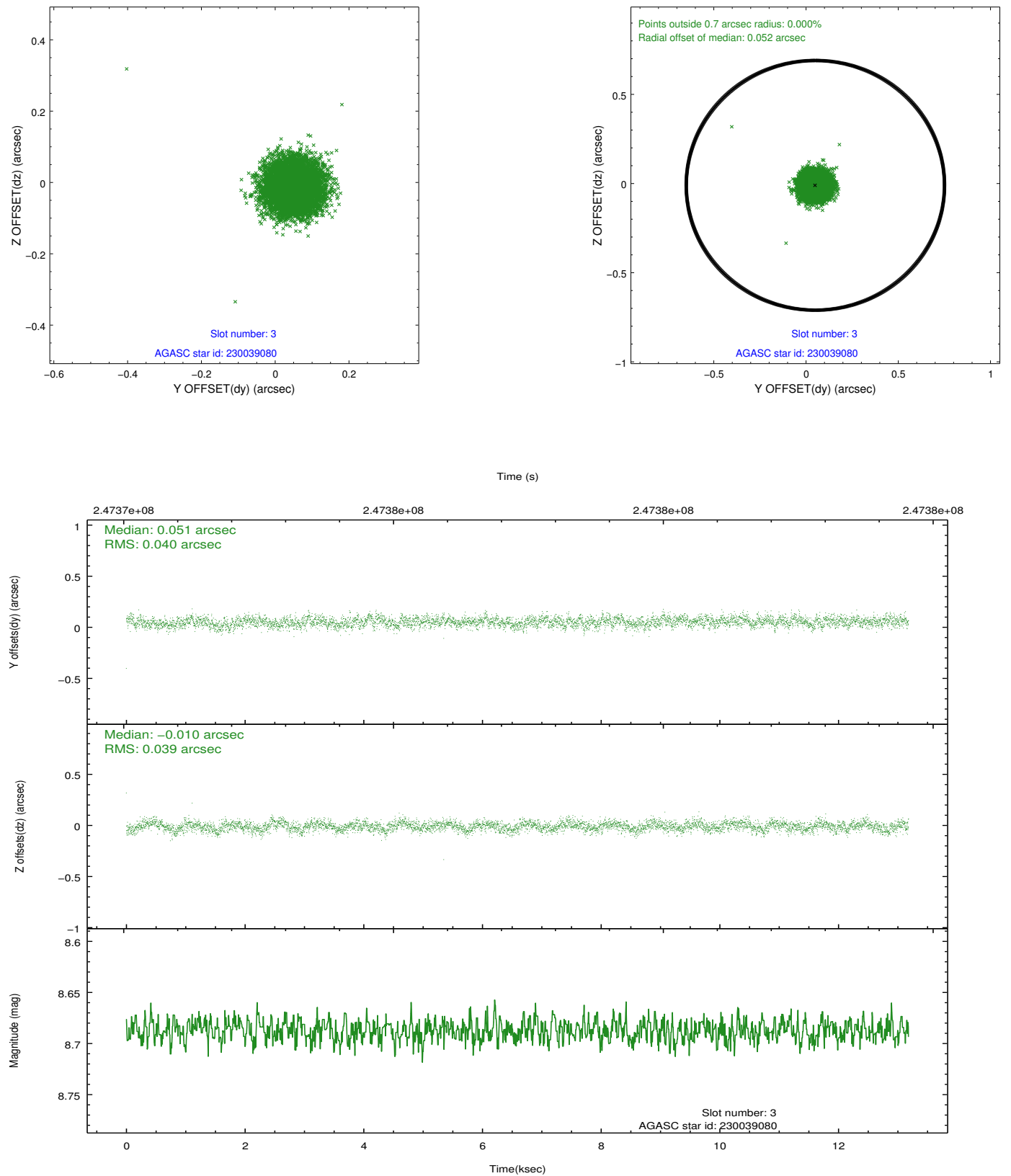


Slot Statistics

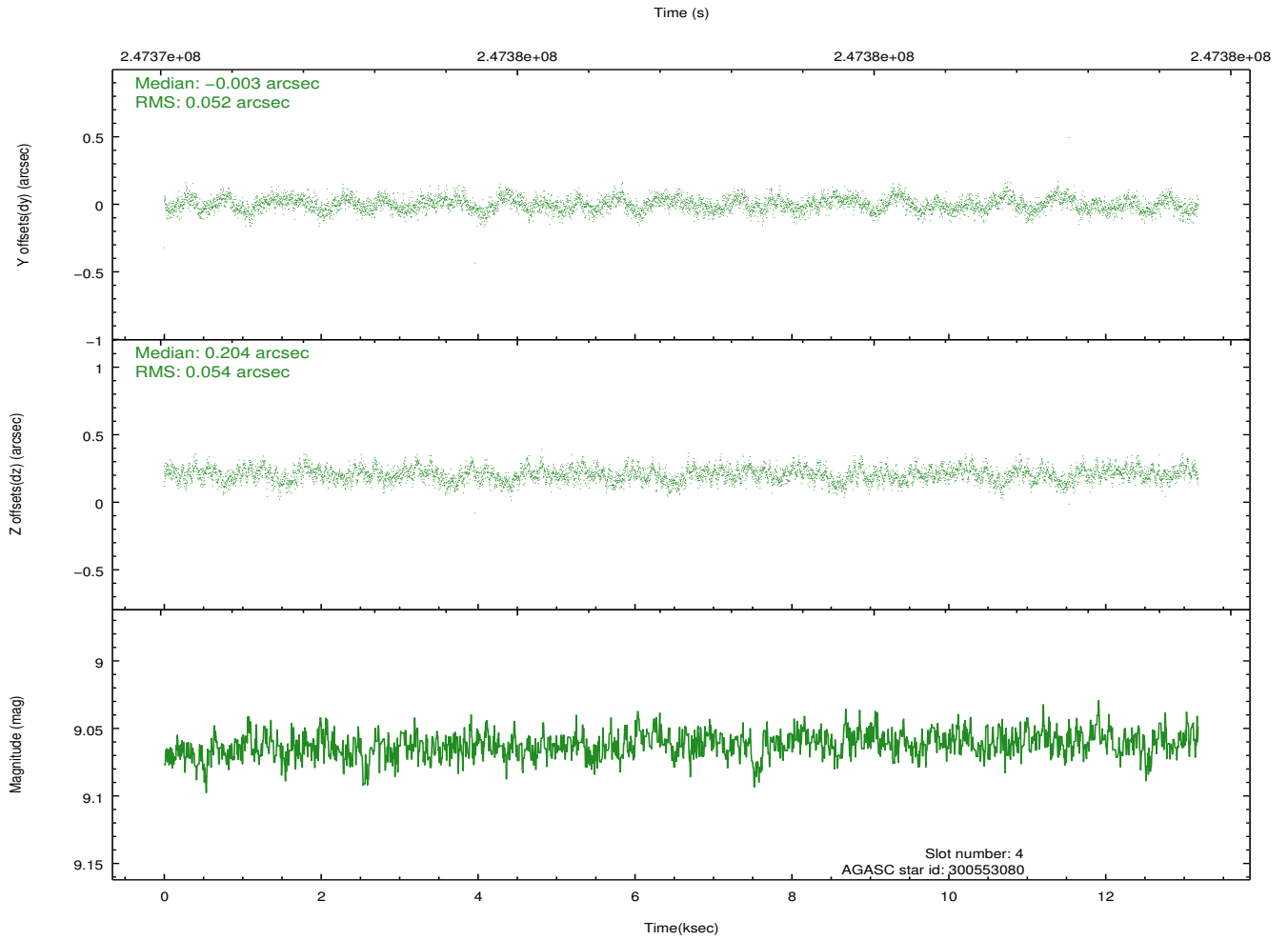
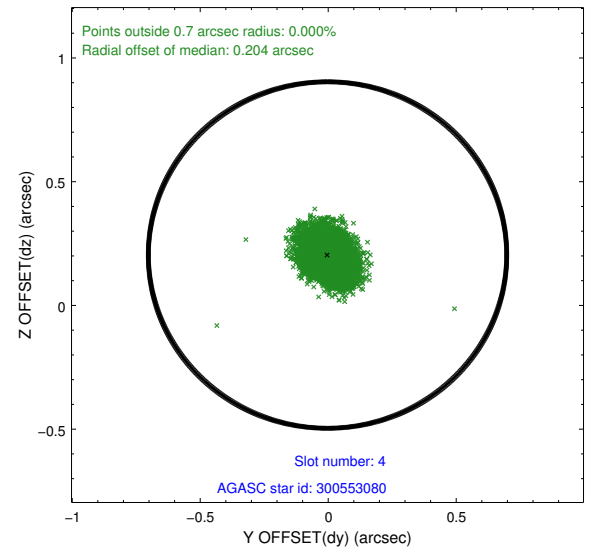
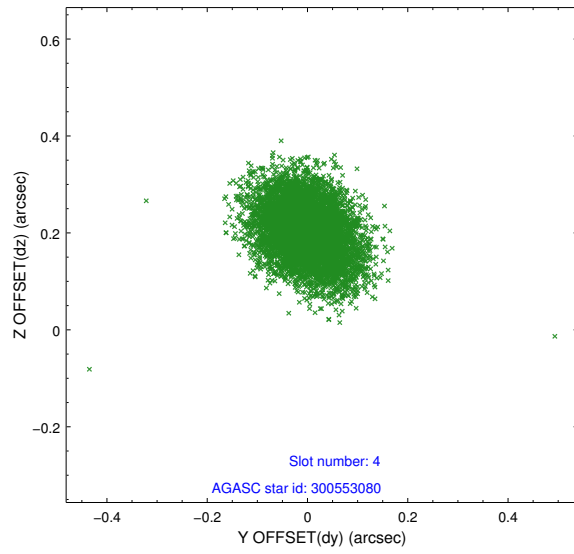
slot	status	id	mag	n_pts	med_dy	med_dz	dr1	dr2	ra	dec	mean_y	mean_z
0	FID	ACIS-I-1	7.24	3215	0.004	0.010	0.009	0.013	0.000000	0.000000	931.82	-834.16
1	FID	ACIS-I-2	7.14	3215	-0.091	-0.042	0.013	0.021	0.000000	0.000000	-762.16	-840.87
2	FID	ACIS-I-6	7.25	3214	-0.004	0.098	0.009	0.016	0.000000	0.000000	397.22	1707.55
3	GUIDE	230039080	8.69	6430	0.051	-0.010	0.059	0.094	23.320866	29.887774	2097.40	1207.42
4	GUIDE	300553080	9.06	6426	-0.003	0.204	0.080	0.130	23.777101	30.773227	-1136.16	-101.15
5	GUIDE	300559160	9.40	6423	0.021	-0.084	0.093	0.153	24.161026	30.632205	-1643.52	1087.14
6	GUIDE	300559832	7.87	6431	-0.024	-0.107	0.053	0.086	24.407732	30.552794	-1999.98	1821.68
7	GUIDE	300559960	7.88	6430	-0.045	0.004	0.059	0.094	22.944463	30.624765	1086.27	-1510.07

2.4 Star Slots

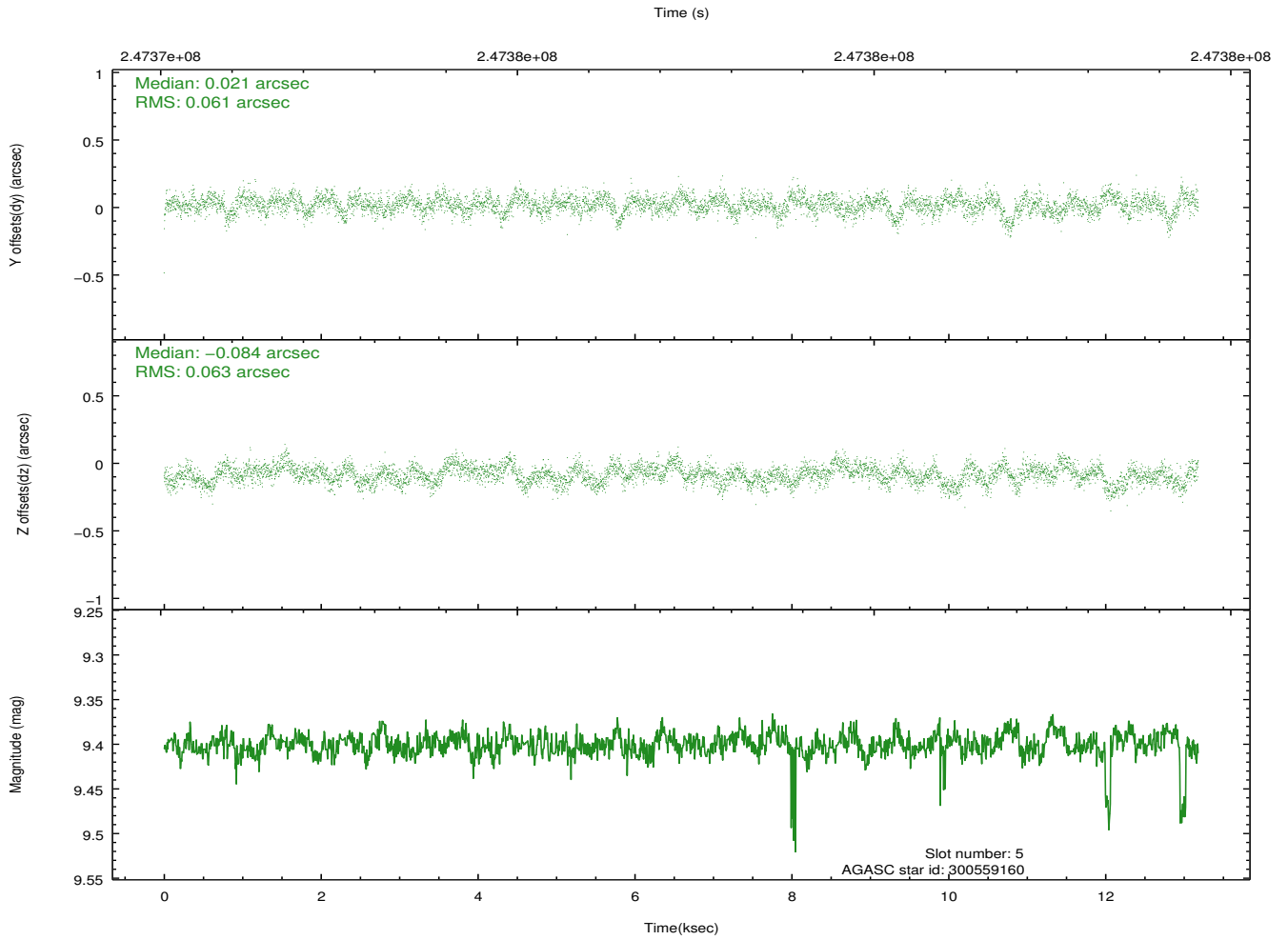
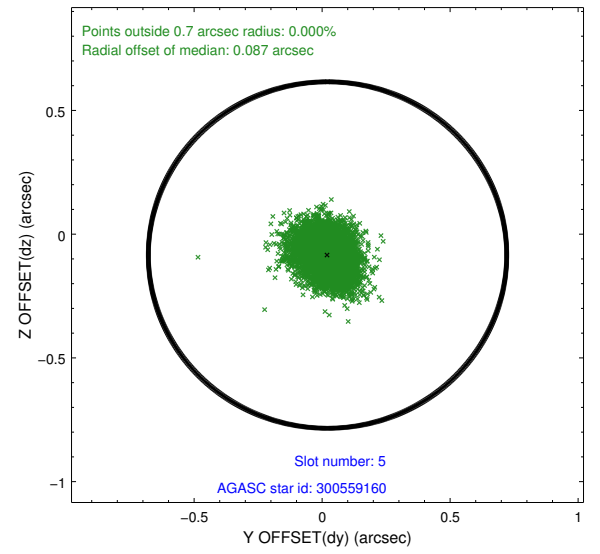
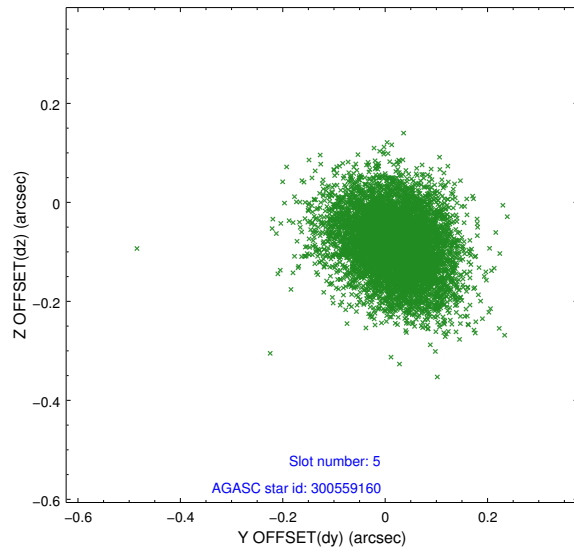
2.4.1 Slot 3



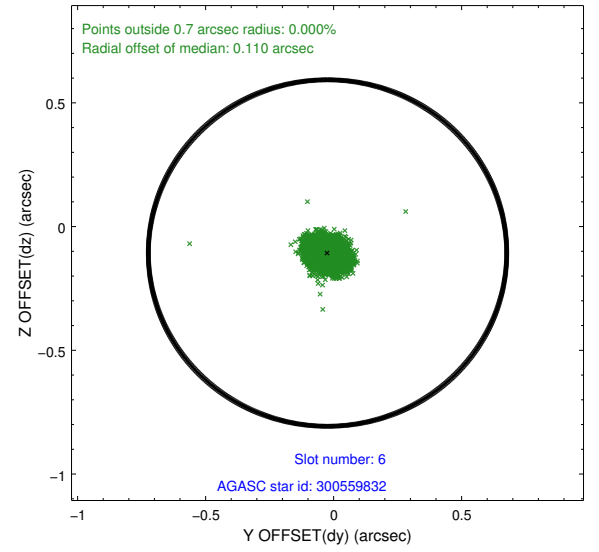
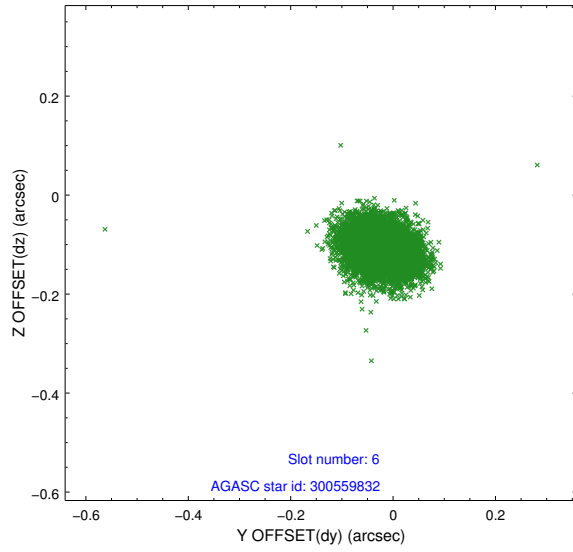
2.4.2 Slot 4



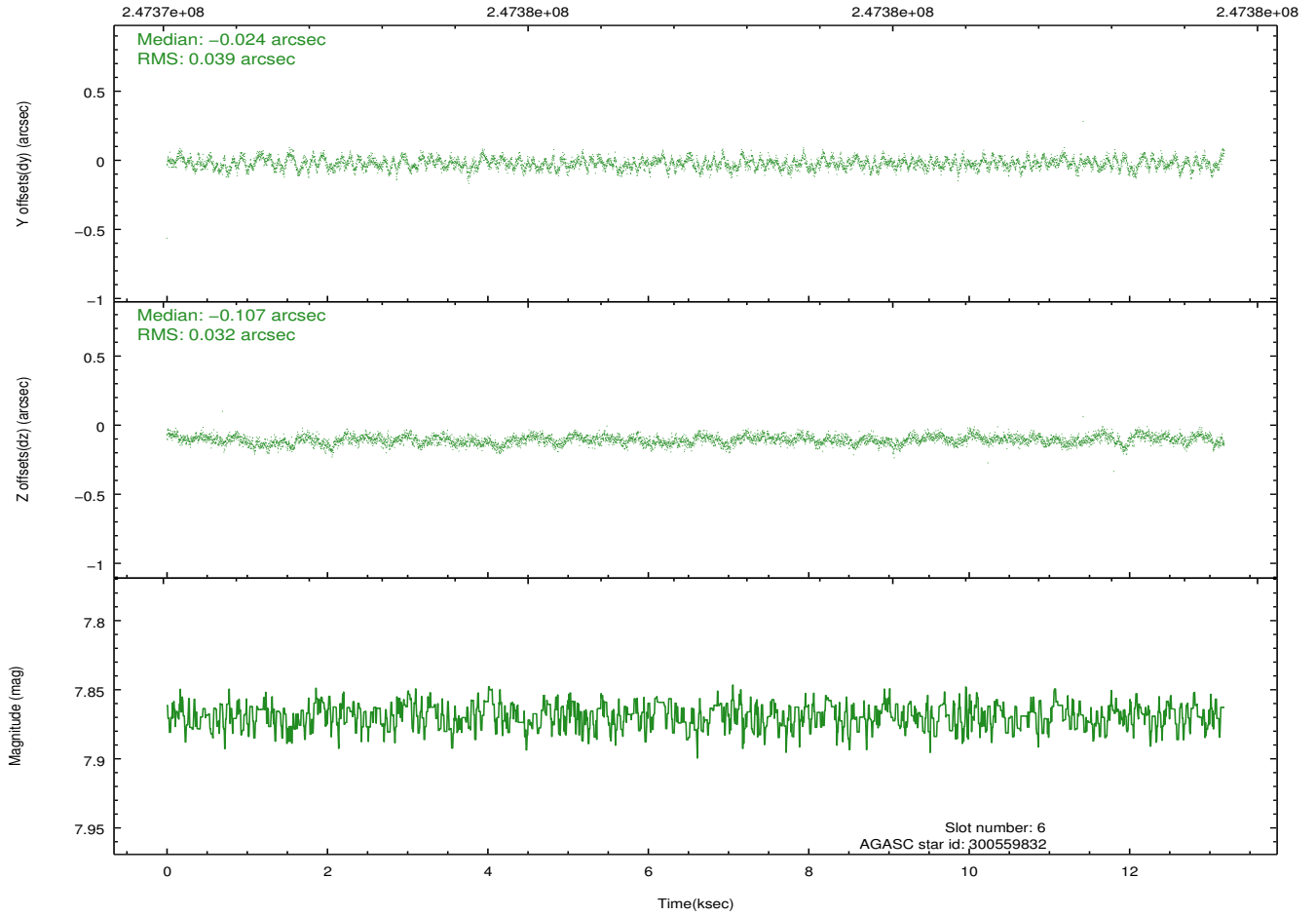
2.4.3 Slot 5



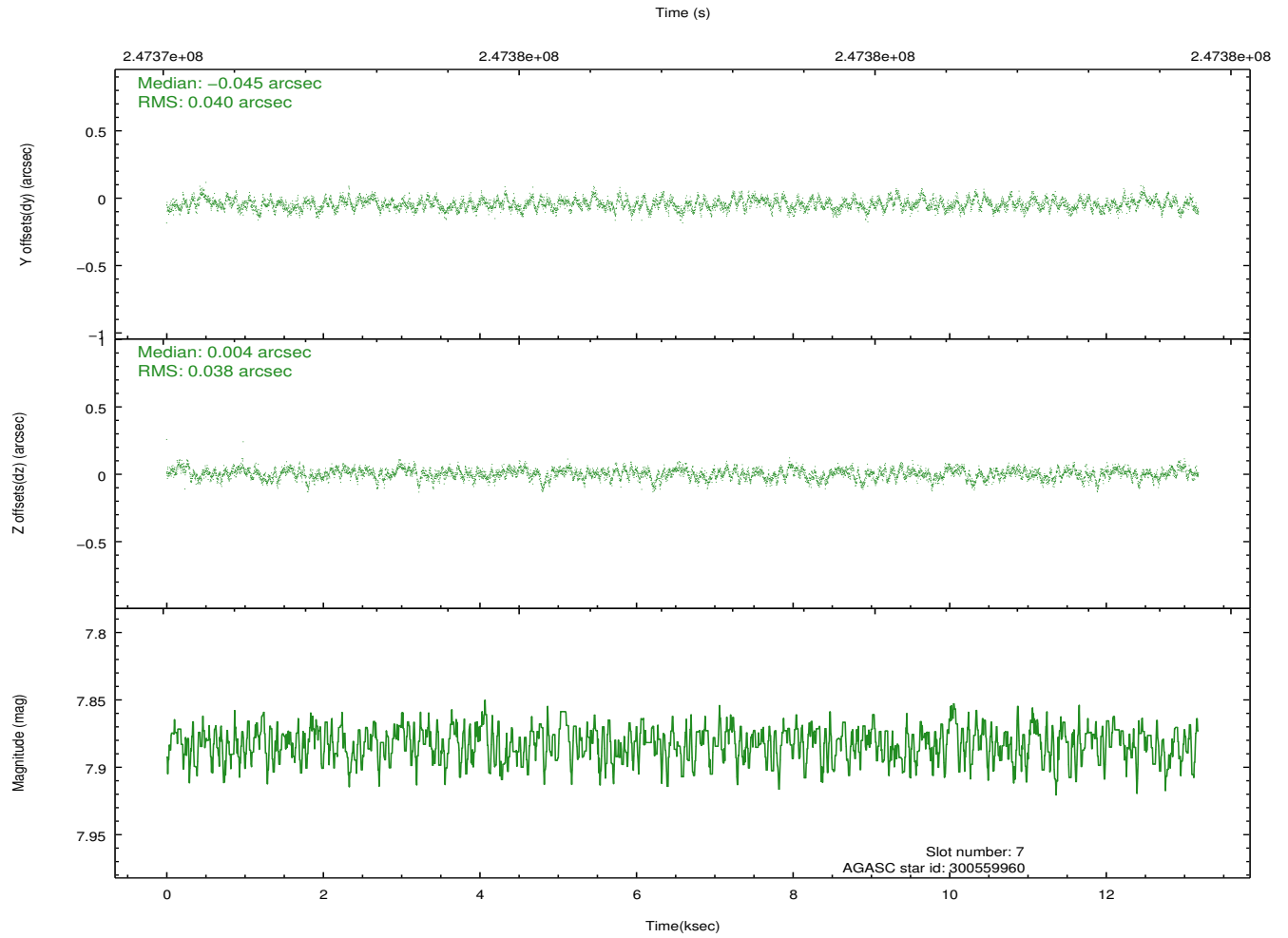
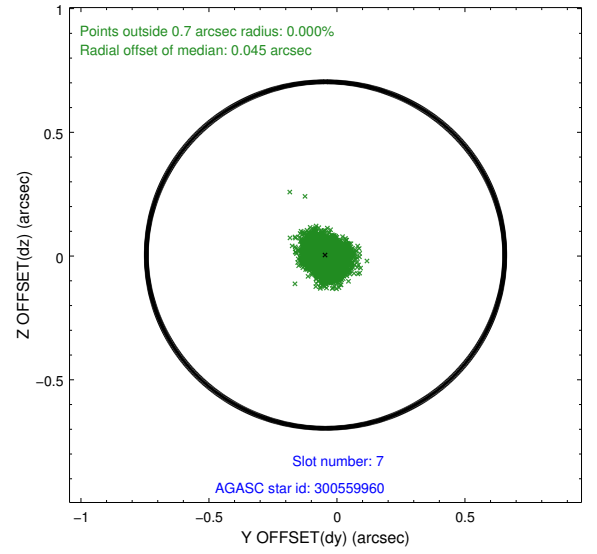
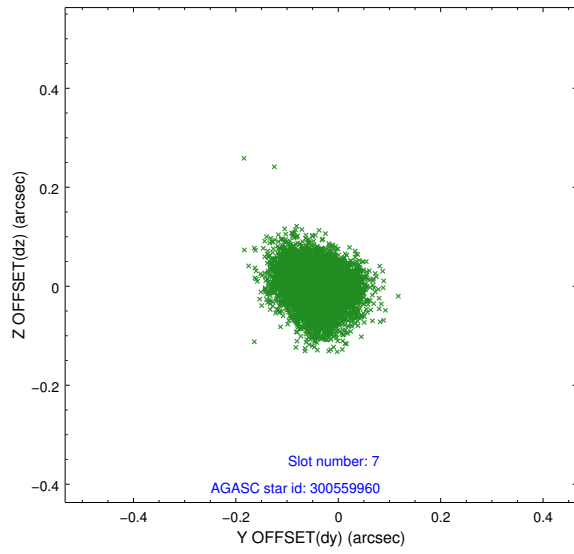
2.4.4 Slot 6



Time (s)

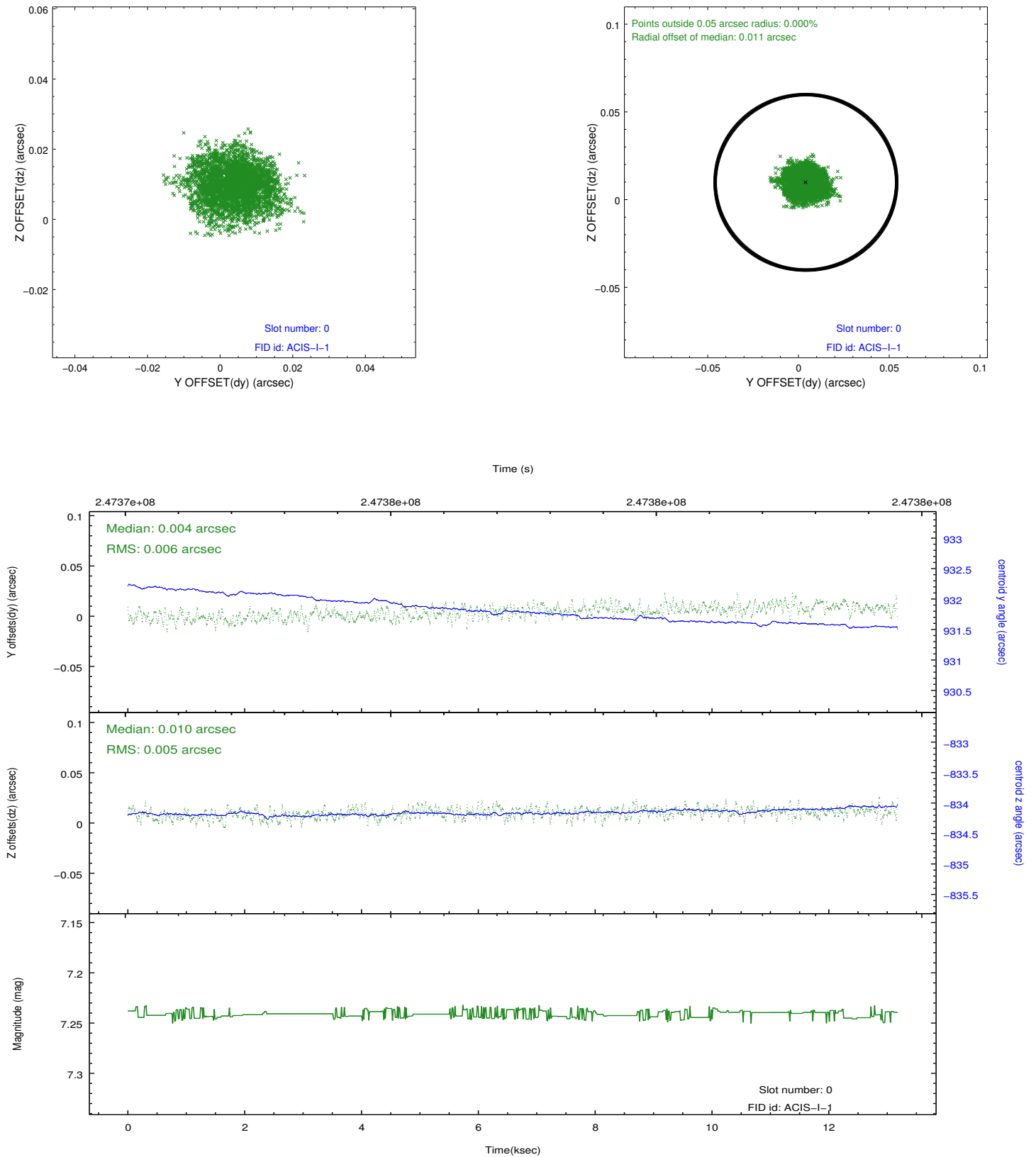


2.4.5 Slot 7

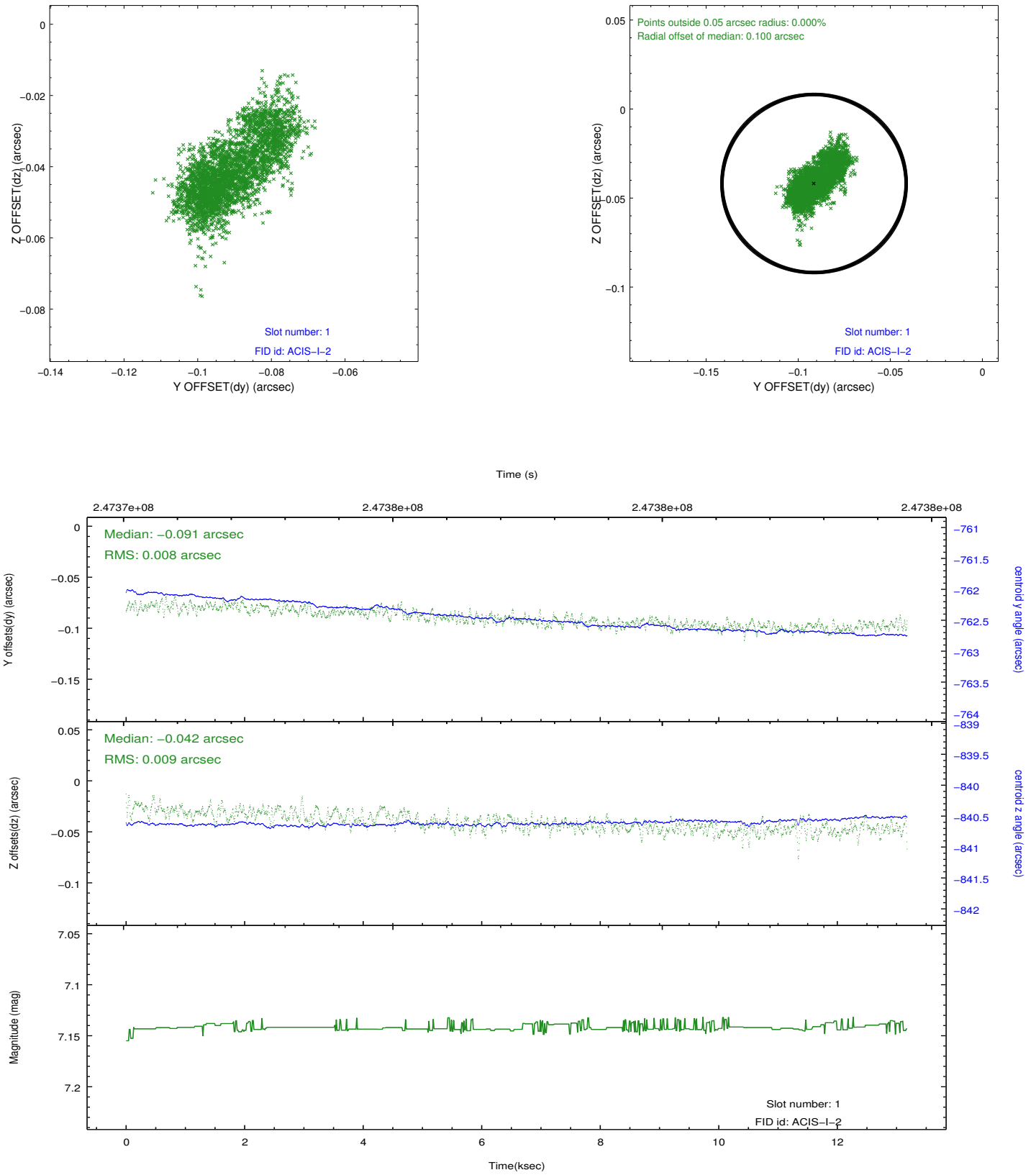


2.5 FID Slots

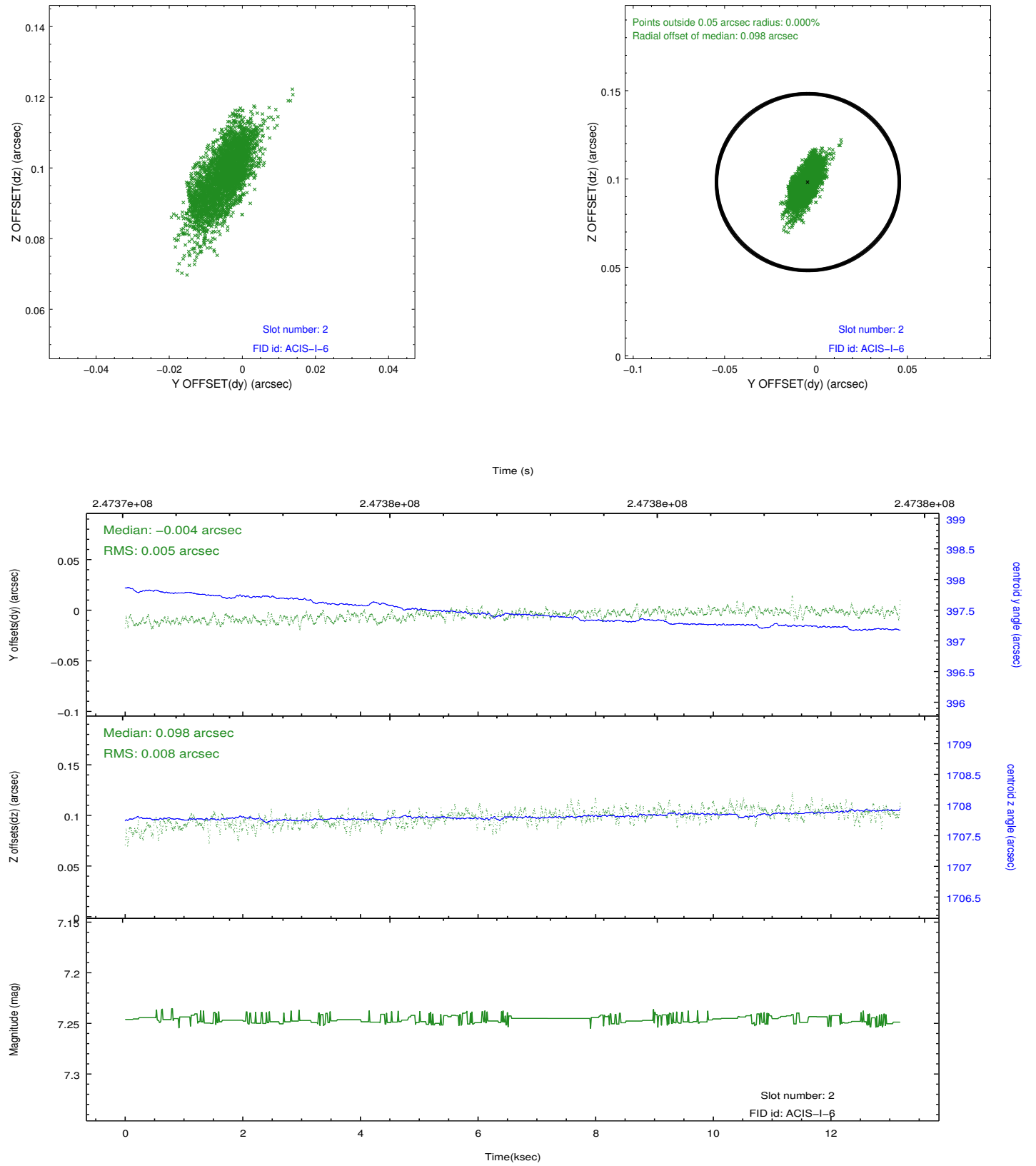
2.5.1 Slot 0



2.5.2 Slot 1



2.5.3 Slot 2



A Summary

A.1 Status

V&V Scientist	Jen Lauer
V&V Date (YYYY-MM-DD)	2013.01.28
V&V Edition	1
V&V Disposition and Status	OK
V&V Charge Time	12.81271

A.2 Comments

Roll preference met.