

V&V Reference Report

L2 ASCDS Version : 8.4.3

Observation 7057 - L2 Version 2
Chandra X-Ray Center

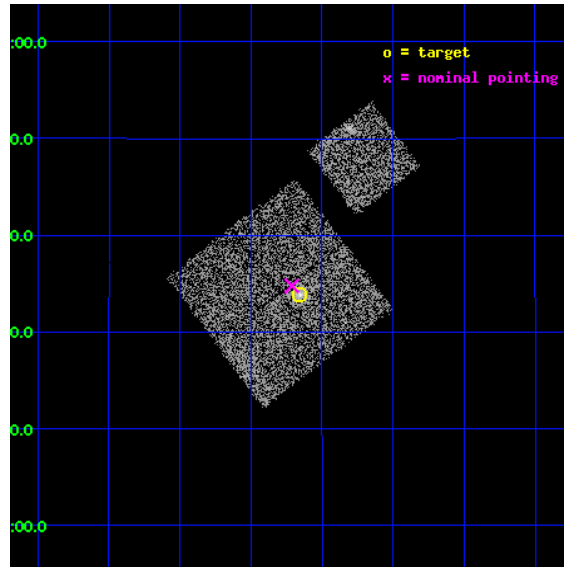
L2 Processing Date : Mar 18 2012

Contents

1	Front	2
2	OBI	3
2.1	OBI	3
2.1.1	Images	3
2.1.2	Bias	3
2.1.3	Parameters	4
2.1.4	Events	4
2.2	Compared Parameters	5
2.3	Aspect	6
2.4	Star Slots	9
2.4.1	Slot 3	9
2.4.2	Slot 4	10
2.4.3	Slot 5	11
2.4.4	Slot 6	12
2.4.5	Slot 7	13
2.5	FID Slots	14
2.5.1	Slot 0	14
2.5.2	Slot 1	15
2.5.3	Slot 2	16
A	Summary	17
A.1	Status	17
A.2	Comments	17

1 Front

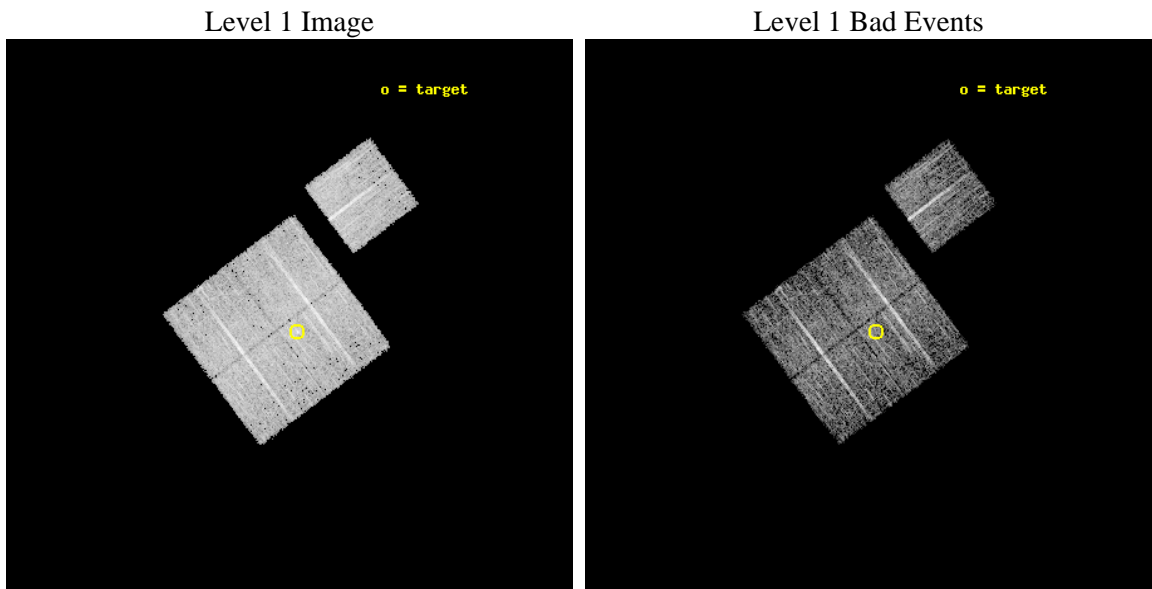
seq_num	600495	Sequence number
obs_id	7057	Observation id
title	Isolated Ellipticals	Proposal title
observer	Dr Stephen Murray	Principal investigator
object	NGC5546	Source name
dtcycle	0	
cycle	P	events from which exps? Prim/Second/Both
ra_targ	214.53875	Observer's specified target RA [deg]
dec_targ	7.564167	Observer's specified target Dec [deg]
ra_nom	214.55297852185	Nominal RA [deg]
dec_nom	7.5796966024786	Nominal Dec [deg]
roll_nom	53.048329171941	Nominal Roll [deg]
revision	2	Processing version of data
ontime	5248.2999898791	Sum of GTIs [s]
livetime	5179.7270867691	Livetime [s]
ontime0	5248.2999898791	Sum of GTIs [s]
ontime1	5248.2999898791	Sum of GTIs [s]
ontime2	5248.2999898791	Sum of GTIs [s]
ontime3	5248.2999898791	Sum of GTIs [s]
ontime6	5248.2999898791	Sum of GTIs [s]
l2events	15980	Number of level 2 events



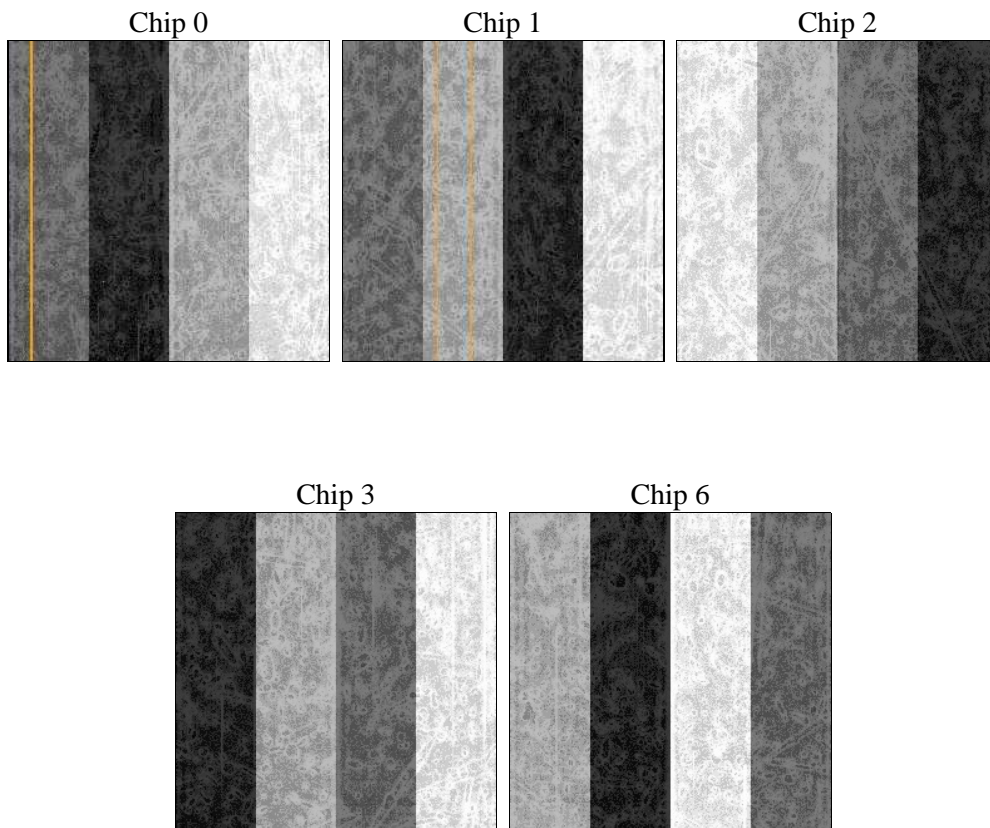
2 OBI

2.1 OBI

2.1.1 Images



2.1.2 Bias



2.1.3 Parameters

obi_num	0	Obi number	sched_exp_time	5087.373000	[s] Scheduled observation exposure time
ascdsver	8.4.3	Processing system revision	ontime	5248.2999898791	Sum of GTIs [s]
caldsver	4.4.8	 	ontime0	5248.2999898791	Sum of GTIs [s]
date	2012-03-18T09:50:35	Date and time of file creation	ontime1	5248.2999898791	Sum of GTIs [s]
revision	2	Processing version of data	ontime2	5248.2999898791	Sum of GTIs [s]
			ontime3	5248.2999898791	Sum of GTIs [s]
			ontime6	5248.2999898791	Sum of GTIs [s]
			l1events	183194	Number of level 1 events

2.1.4 Events

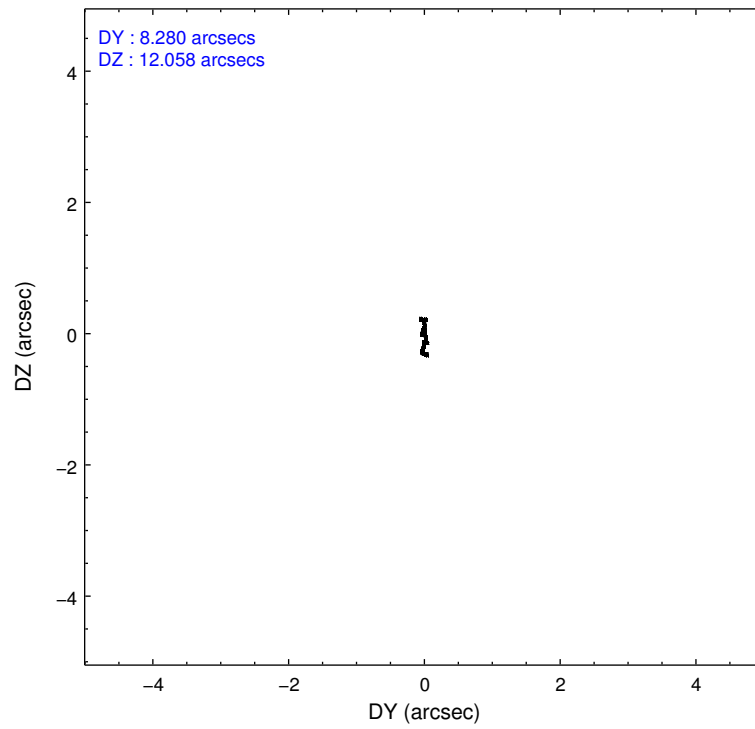
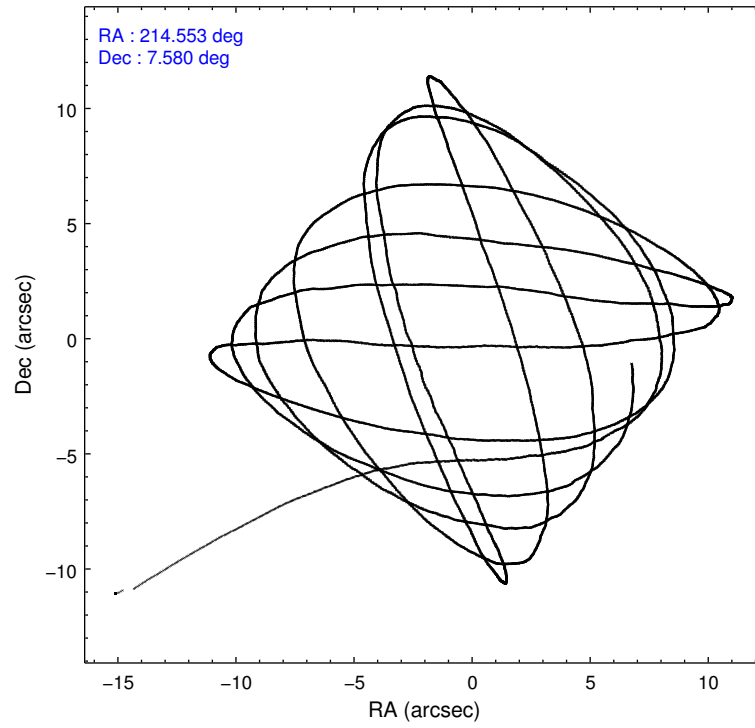
	ccd 0	ccd 1	ccd 2	ccd 3	ccd 6
level 1 events	35033	35196	37974	36505	38486
rejected events	31460	31038	34421	32536	34620
rejected %	89%	88%	90%	89%	89%

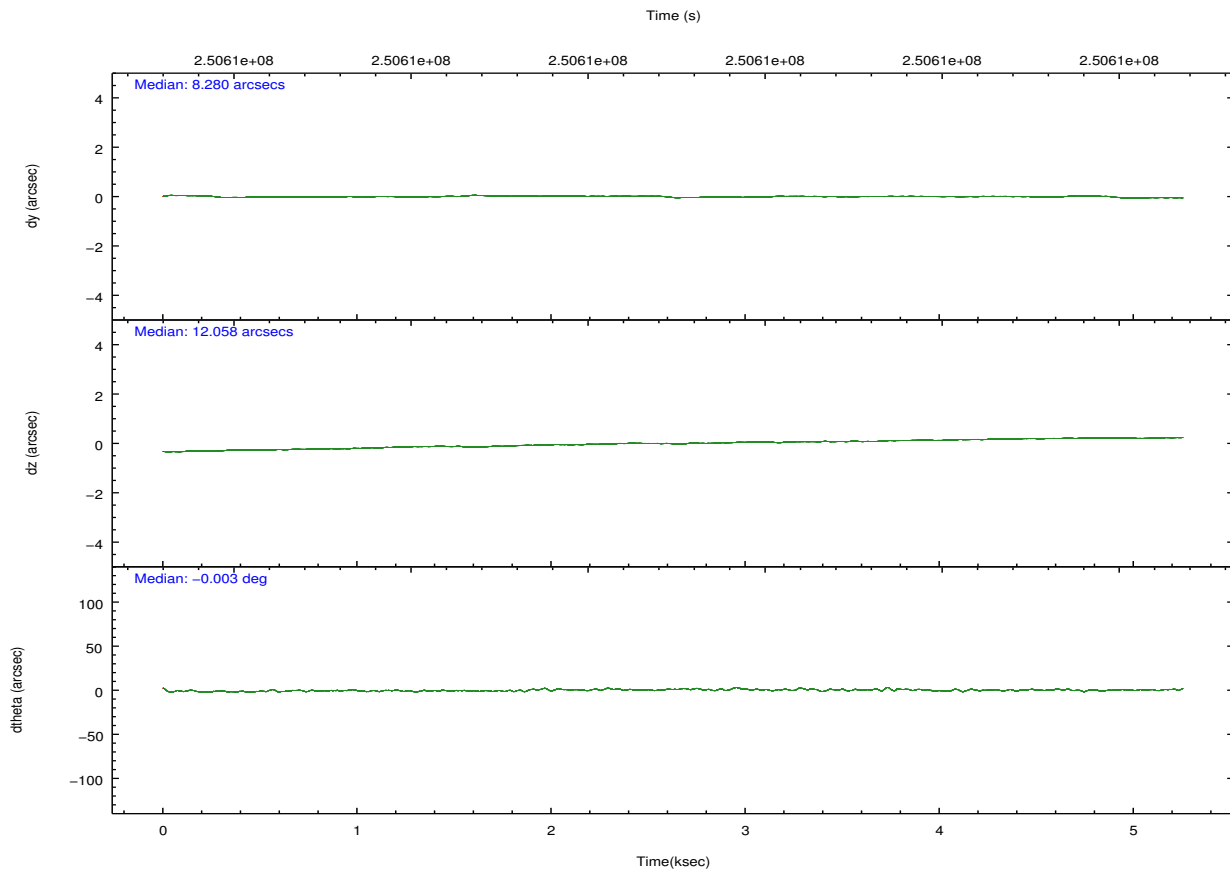
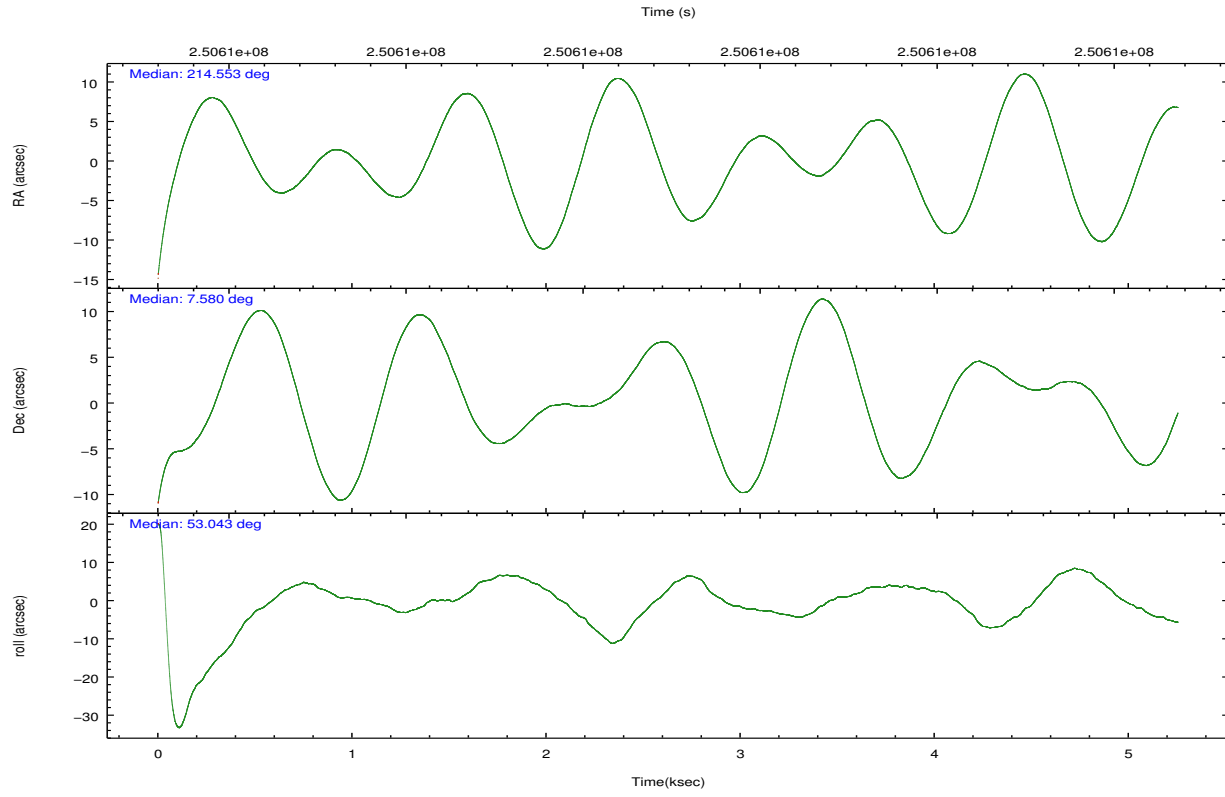
	ccd 0	ccd 1	ccd 2	ccd 3	ccd 6
grade 0 events	1279	1577	1356	1799	1460
	3%	4%	3%	4%	3%
grade 1 events	25	16	21	26	19
	0%	0%	0%	0%	0%
grade 2 events	897	893	850	782	796
	2%	2%	2%	2%	2%
grade 3 events	421	465	346	422	422
	1%	1%	0%	1%	1%
grade 4 events	393	465	396	393	444
	1%	1%	1%	1%	1%
grade 5 events	1239	1359	1171	1479	1432
	3%	3%	3%	4%	3%
grade 6 events	688	872	723	696	848
	1%	2%	1%	1%	2%
grade 7 events	30091	29549	33111	30908	33065
	85%	83%	87%	84%	85%

2.2 Compared Parameters

Parameter	Planned	Actual	Parameter	Planned	Actual
Instrument	ACIS	ACIS	Obspar format version number	7	7
Detector	ACIS-01236	ACIS-01236	Obspar file type	PREDICTED	ACTUAL
Grating	NONE	NONE	Obspar update status	NONE	UPDATED
Data mode	VFAINT	VFAINT	Number of optional ACIS chips dropped	0	0
Observation mode	POINTING	POINTING	On-chip summing requested	N	N
[deg] Pointing RA	214.549713	214.5529785218519	Subarray requested	NONE	NONE
[deg] Pointing Dec	7.552580	7.579696602478593	Alternating exposures requested	N	N
[deg] Pointing Roll	52.839932	53.04832917194099	[s] Primary exposure time	0.000000	3.1
[mm] SIM focus pos	-0.782348	-0.7809083437167272			
[mm] SIM defocus	0	0.001439871863259334			
[mm] SIM translation stage pos	-231.092463	-231.0932336816812			
[mm] SIM translation stage offset	-2.5	-2.499219321248518			
[s] Observation start time (MET)	250608025.184000	250606967.73015			
Observation start date	2005-12-10T13:19:21	2005-12-10T13:02:47			
[s] Observation end time (MET)	250613112.184000	250613346.30544			
Observation end date	2005-12-10T14:44:08	2005-12-10T14:49:06			
Read mode	TIMED	TIMED			

2.3 Aspect



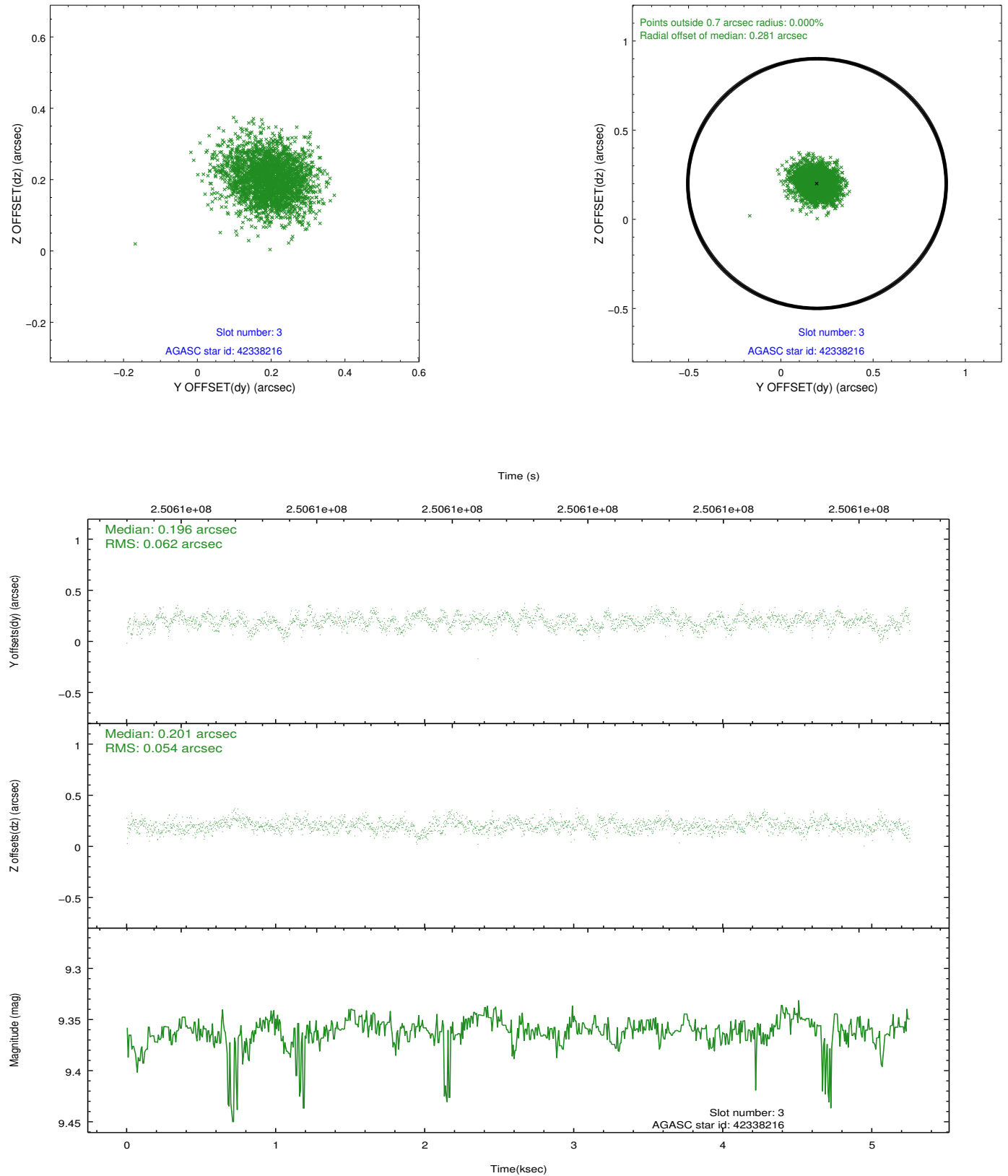


Slot Statistics

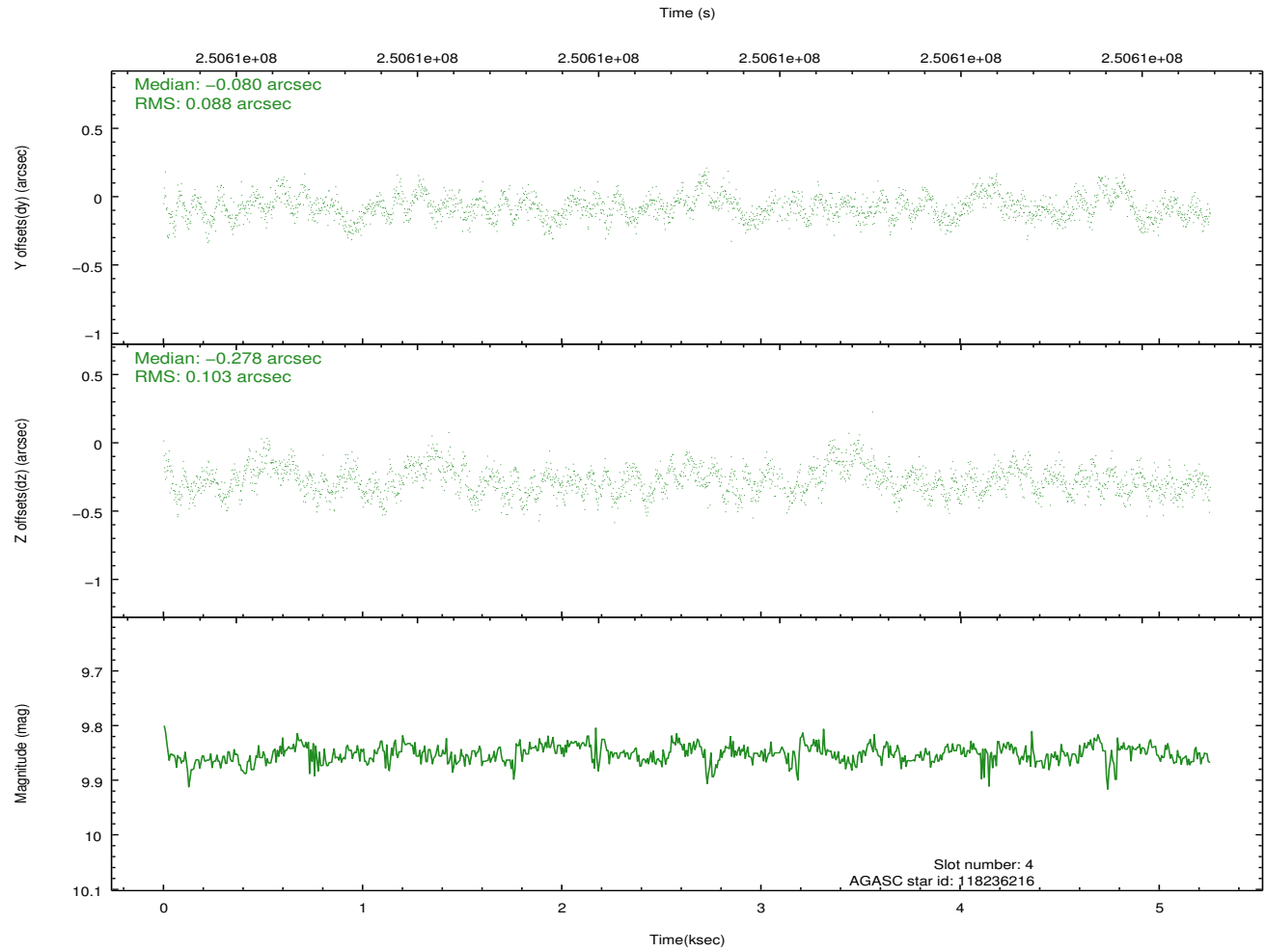
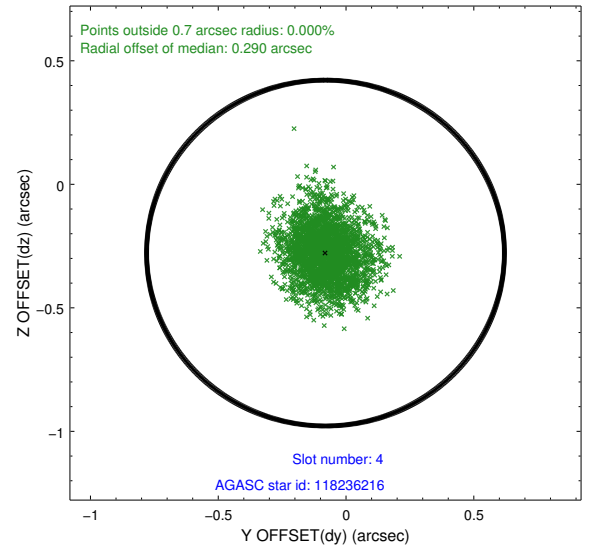
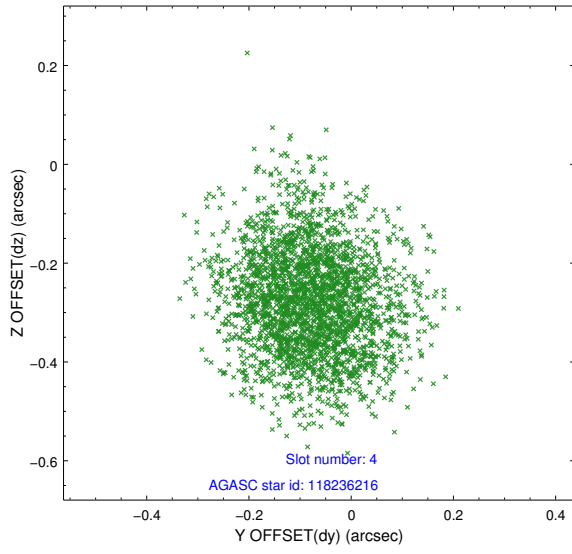
slot	status	id	mag	n_pts	med_dy	med_dz	dr1	dr2	ra	dec	mean_y	mean_z
0	FID	ACIS-I-2	7.16	1282	-0.093	-0.070	0.016	0.026	0.000000	0.000000	-763.06	-892.92
1	FID	ACIS-I-4	7.18	1280	0.173	0.074	0.015	0.026	0.000000	0.000000	2150.71	1012.80
2	FID	ACIS-I-5	7.22	1282	-0.183	0.064	0.010	0.019	0.000000	0.000000	-1815.40	1011.59
3	GUIDE	42338216	9.36	2562	0.196	0.201	0.087	0.145	214.545343	6.840230	-2052.41	-1536.29
4	GUIDE	118236216	9.85	2536	-0.080	-0.278	0.144	0.232	214.094448	7.962309	194.94	2184.49
5	GUIDE	118237896	10.07	2554	0.108	-0.181	0.189	0.314	214.045968	7.845856	-242.51	2071.03
6	GUIDE	119146840	9.29	2562	-0.125	0.234	0.085	0.133	214.909401	7.618244	964.41	-878.33
7	GUIDE	119146944	9.89	2562	-0.125	0.021	0.140	0.229	214.768212	8.088129	2007.74	544.30

2.4 Star Slots

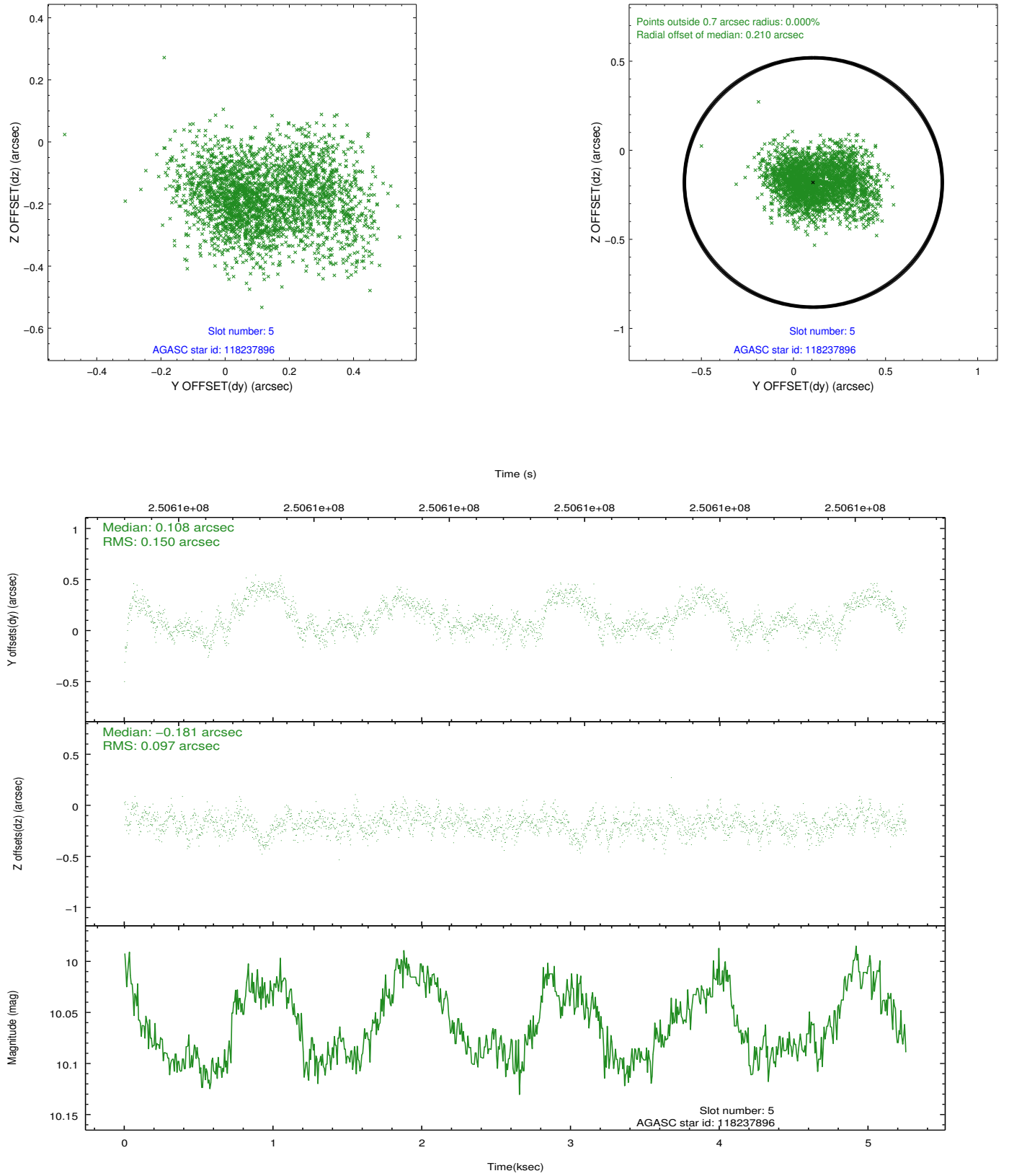
2.4.1 Slot 3



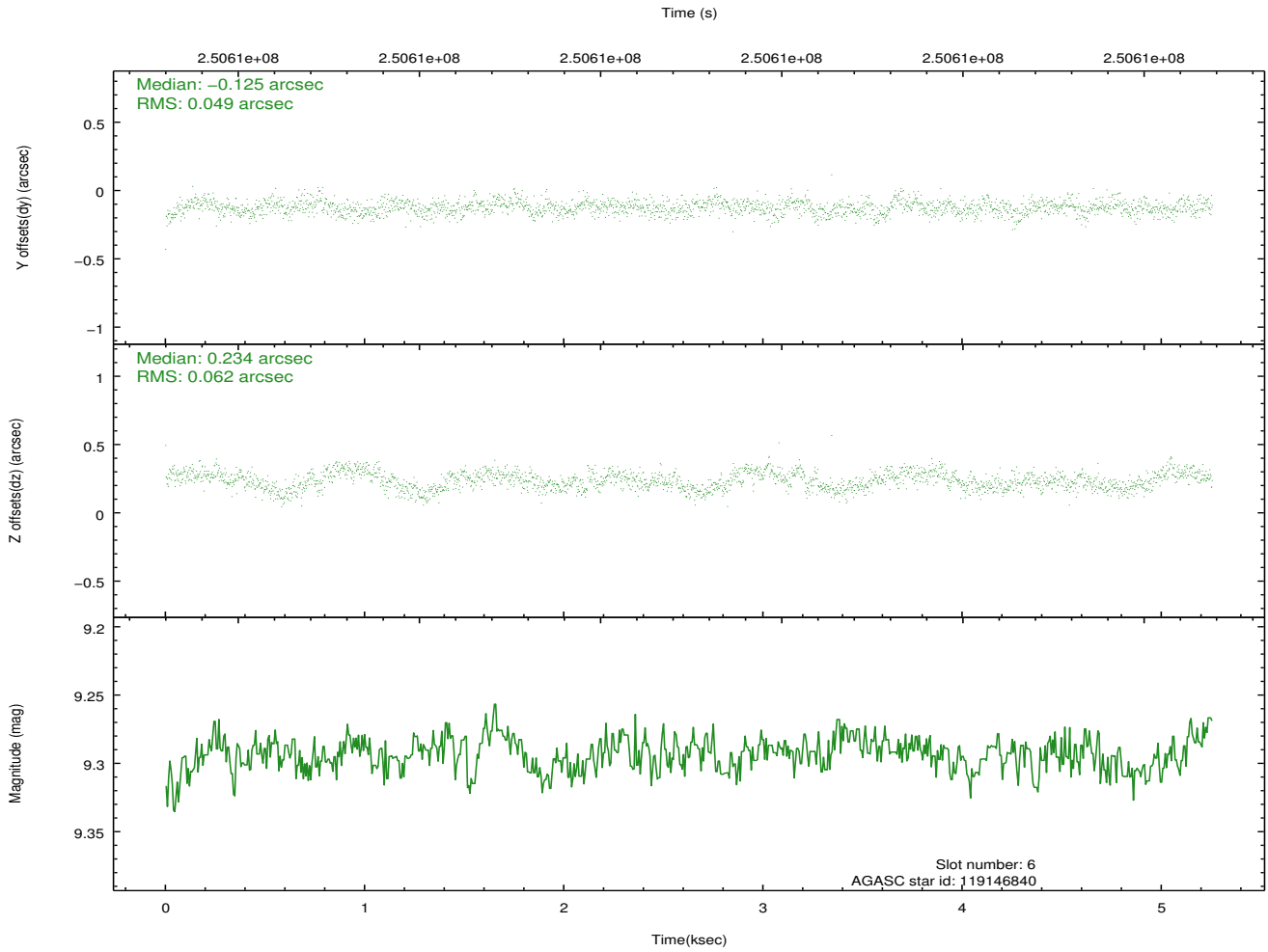
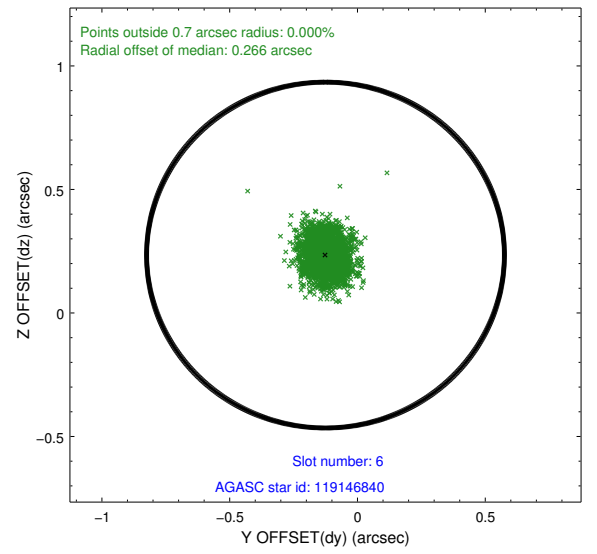
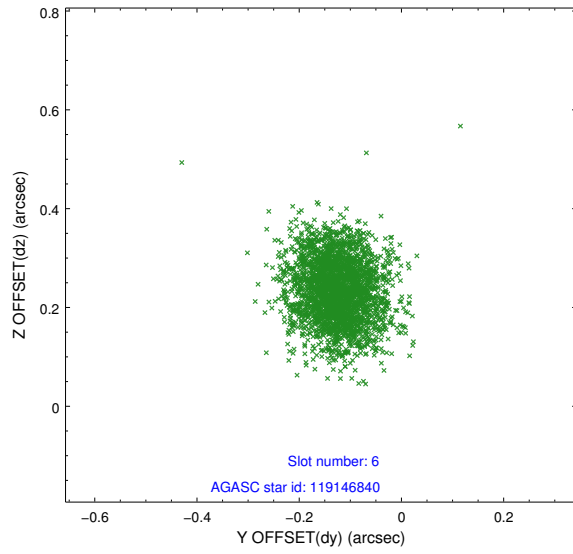
2.4.2 Slot 4



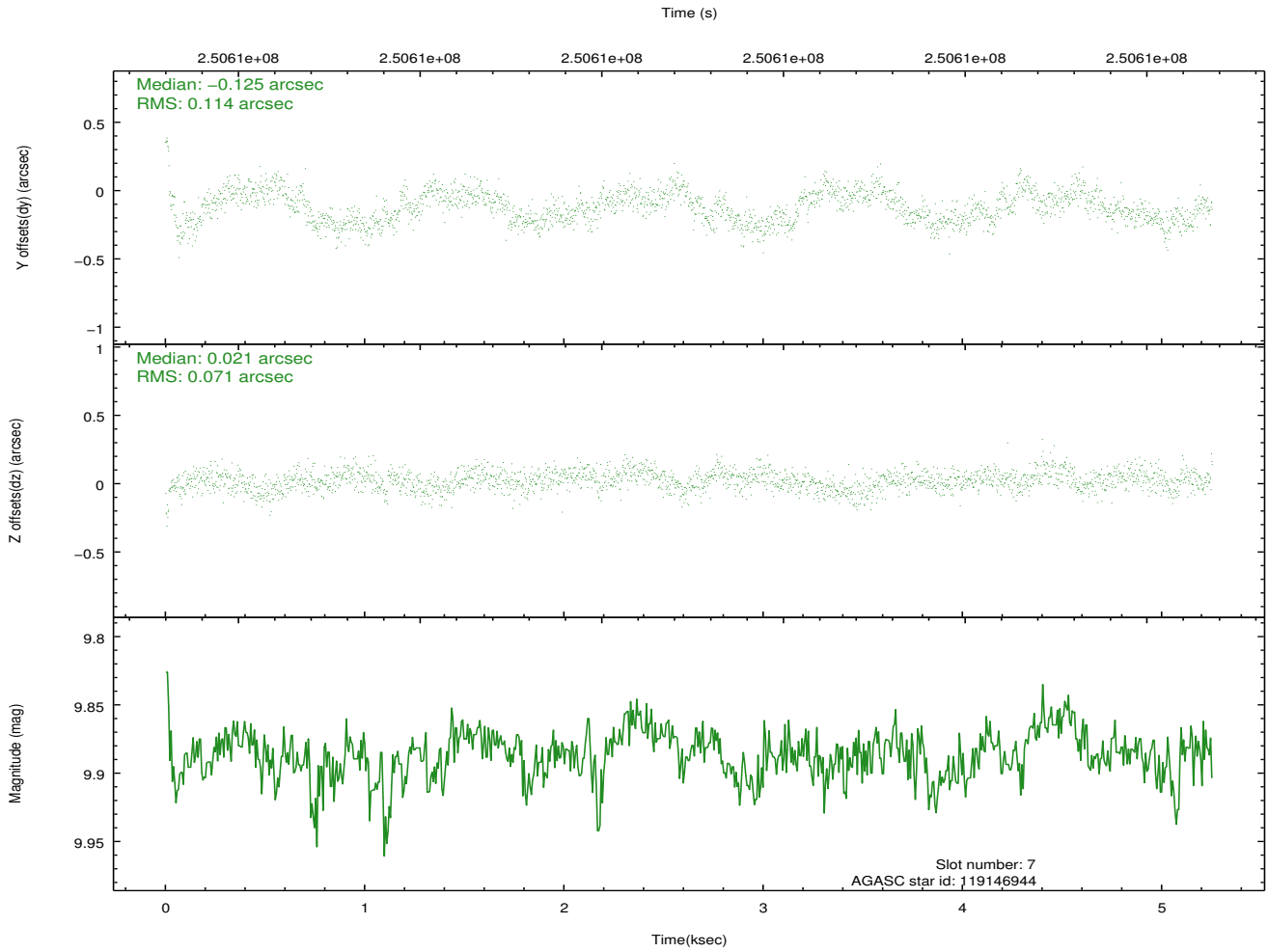
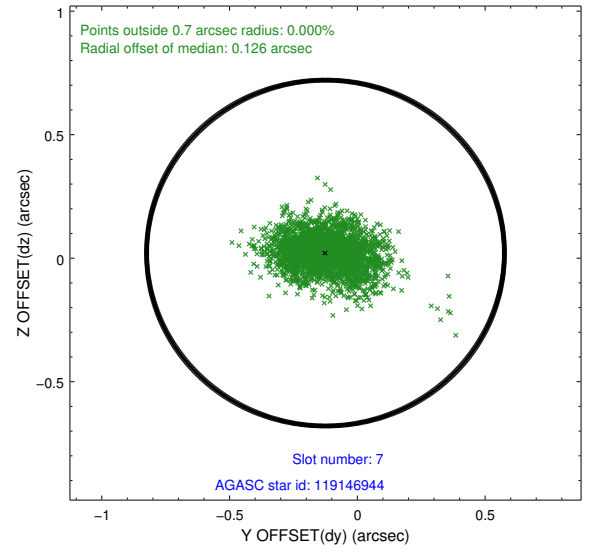
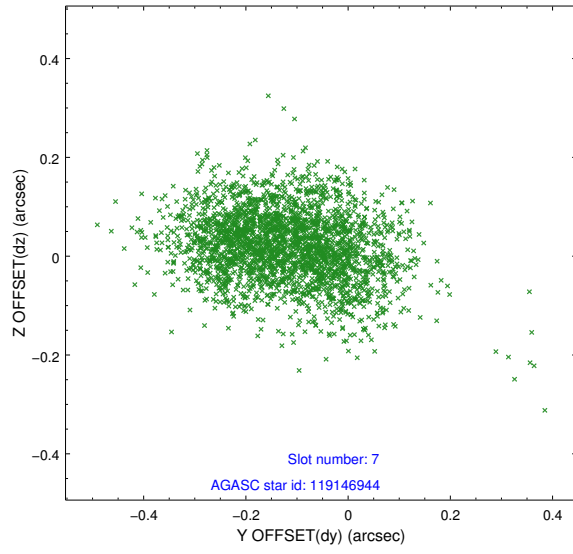
2.4.3 Slot 5



2.4.4 Slot 6

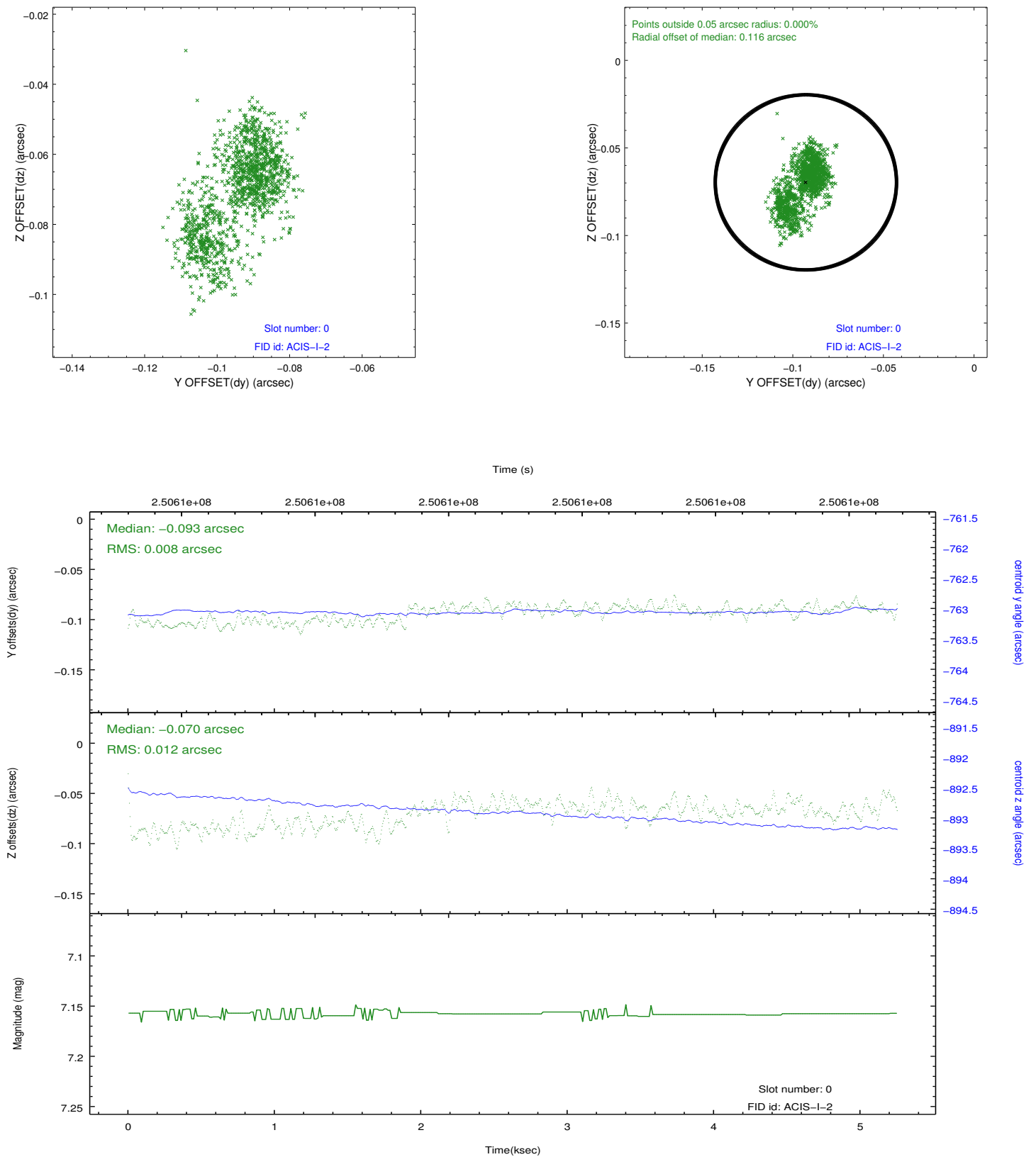


2.4.5 Slot 7

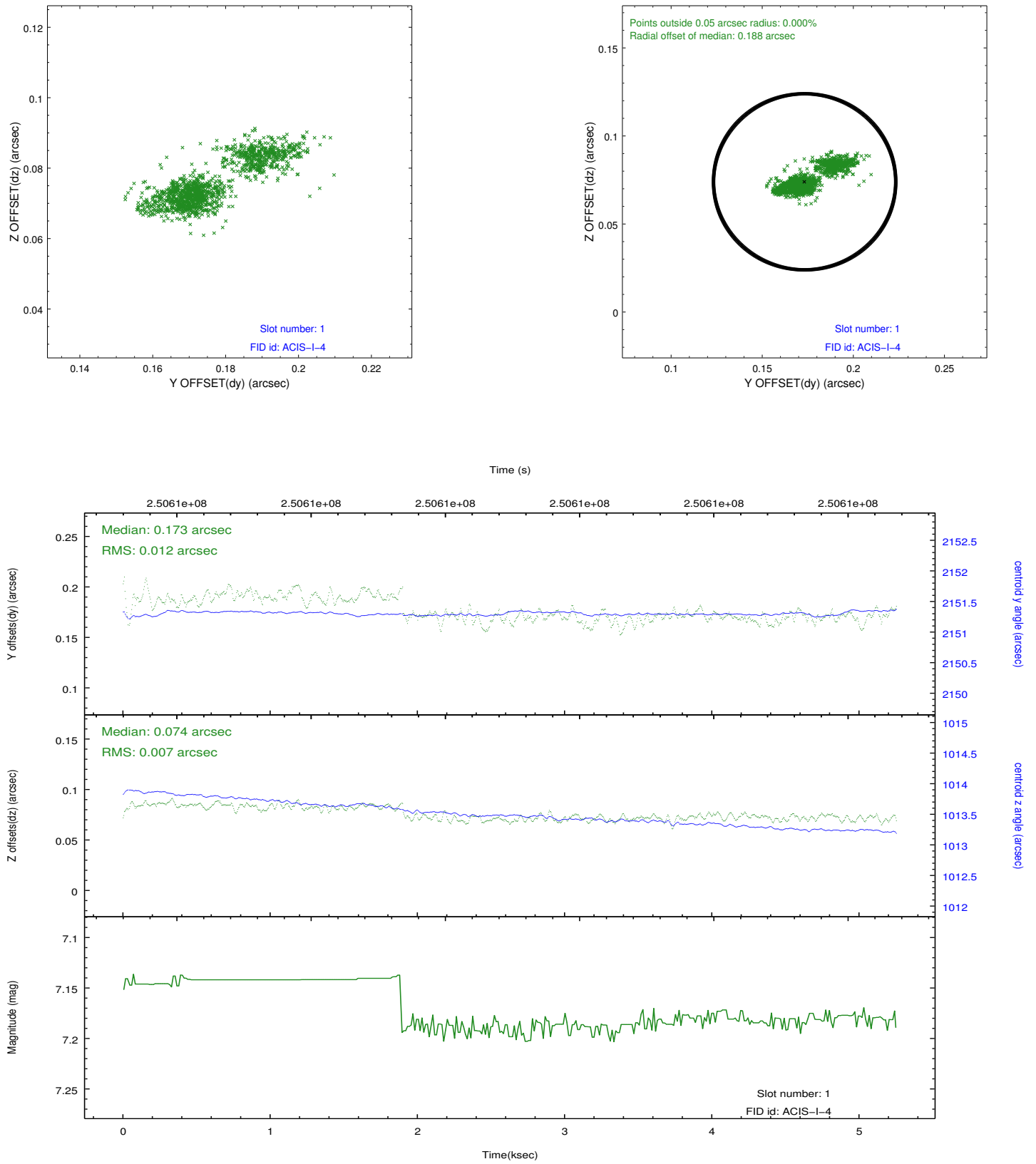


2.5 FID Slots

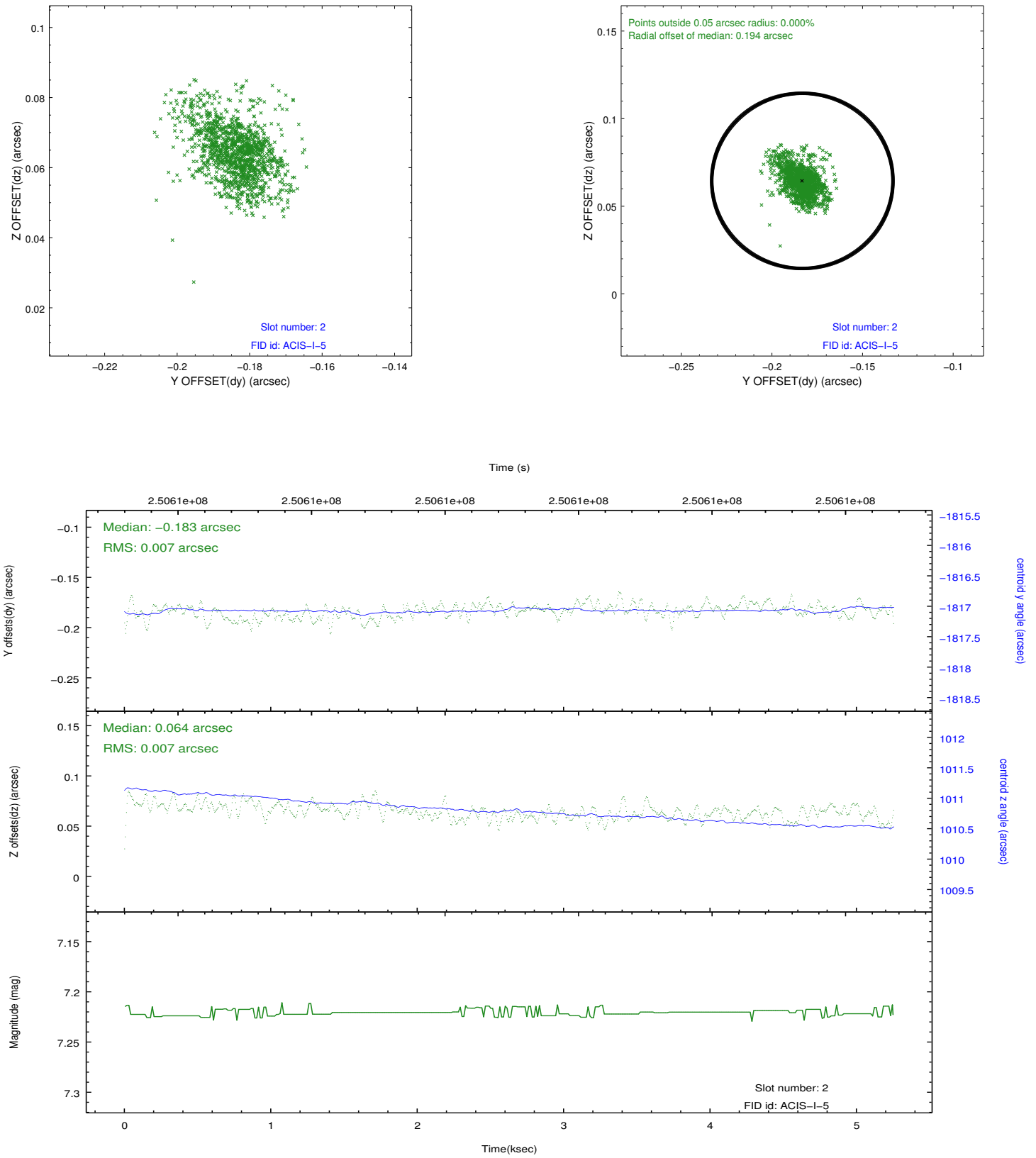
2.5.1 Slot 0



2.5.2 Slot 1



2.5.3 Slot 2



A Summary

A.1 Status

V&V Scientist	Jen Lauer
V&V Date (YYYY-MM-DD)	2012.03.19
V&V Edition	1
V&V Disposition and Status	OK
V&V Charge Time	5.248299

A.2 Comments