

# V&V Reference Report

## L2 ASCDS Version : 8.4.3

Observation 6797 - L2 Version 2  
Chandra X-Ray Center

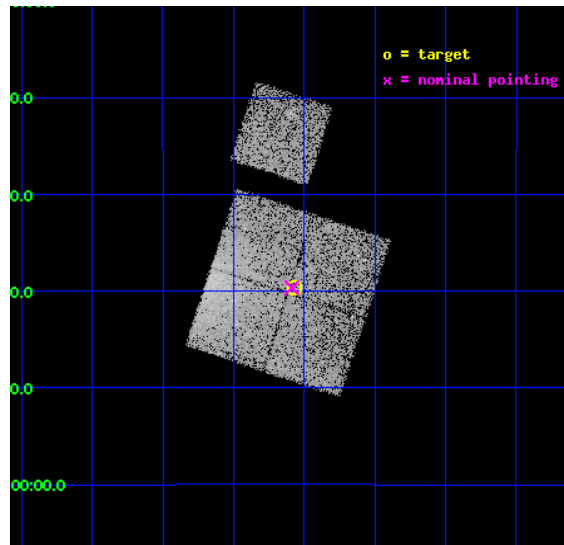
L2 Processing Date : Mar 24 2012

## Contents

<b>1</b>	<b>Front</b>	<b>2</b>
<b>2</b>	<b>OBI</b>	<b>3</b>
2.1	OBI . . . . .	3
2.1.1	Images . . . . .	3
2.1.2	Bias . . . . .	3
2.1.3	Parameters . . . . .	4
2.1.4	Events . . . . .	4
2.2	Compared Parameters . . . . .	5
2.3	Aspect . . . . .	6
2.4	Star Slots . . . . .	9
2.4.1	Slot 3 . . . . .	9
2.4.2	Slot 4 . . . . .	10
2.4.3	Slot 5 . . . . .	11
2.4.4	Slot 6 . . . . .	12
2.4.5	Slot 7 . . . . .	13
2.5	FID Slots . . . . .	14
2.5.1	Slot 0 . . . . .	14
2.5.2	Slot 1 . . . . .	15
2.5.3	Slot 2 . . . . .	16
<b>A</b>	<b>Summary</b>	<b>17</b>
A.1	Status . . . . .	17
A.2	Comments . . . . .	17

# 1 Front

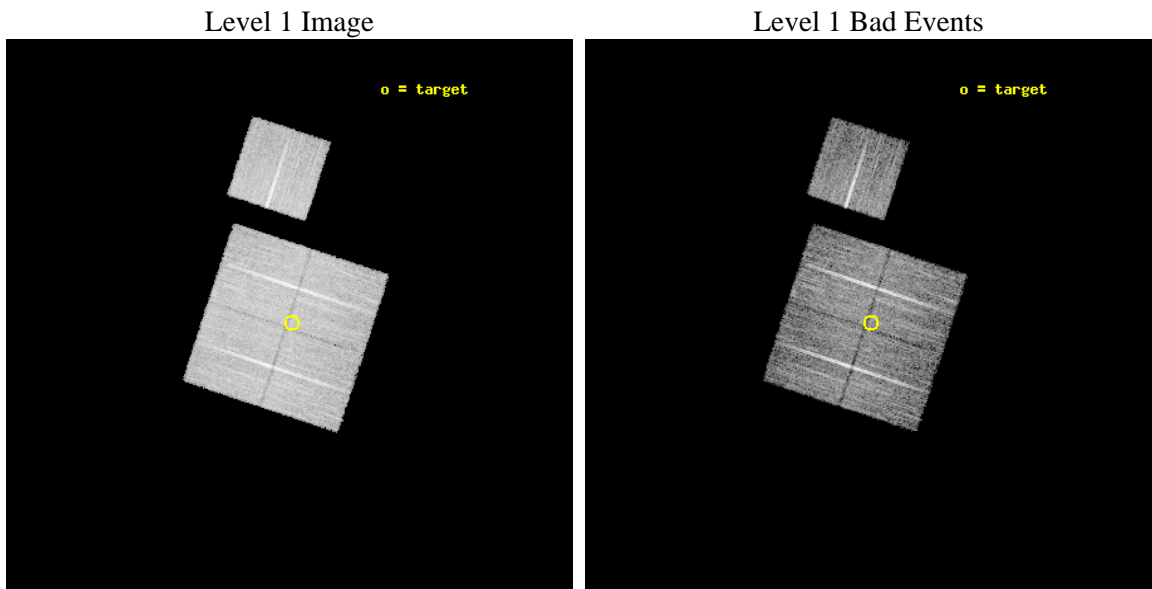
seq_num	701215	Sequence number
obs_id	6797	Observation id
title	AGN in the Outskirts of Low-Redshift Clusters of Galaxies	Proposal
observer	Prof. Paul Martini	Principal investigator
object	Abell754-P5	Source name
dtcycle	0	&#160
cycle	P	events from which exps? Prim/Second/Both
ra_targ	137.017083	Observer's specified target RA [deg]
dec_targ	-9.660833	Observer's specified target Dec [deg]
ra_nom	137.0217584598	Nominal RA [deg]
dec_nom	-9.6611887477624	Nominal Dec [deg]
roll_nom	18.257289524817	Nominal Roll [deg]
revision	2	Processing version of data
ontime	10164.899980426	Sum of GTIs [s]
livetime	10032.088078891	Livetime [s]
ontime0	10164.899980426	Sum of GTIs [s]
ontime1	10164.899980426	Sum of GTIs [s]
ontime2	10161.758990169	Sum of GTIs [s]
ontime3	10164.899980426	Sum of GTIs [s]
ontime6	10164.899980426	Sum of GTIs [s]
l2events	44243	Number of level 2 events



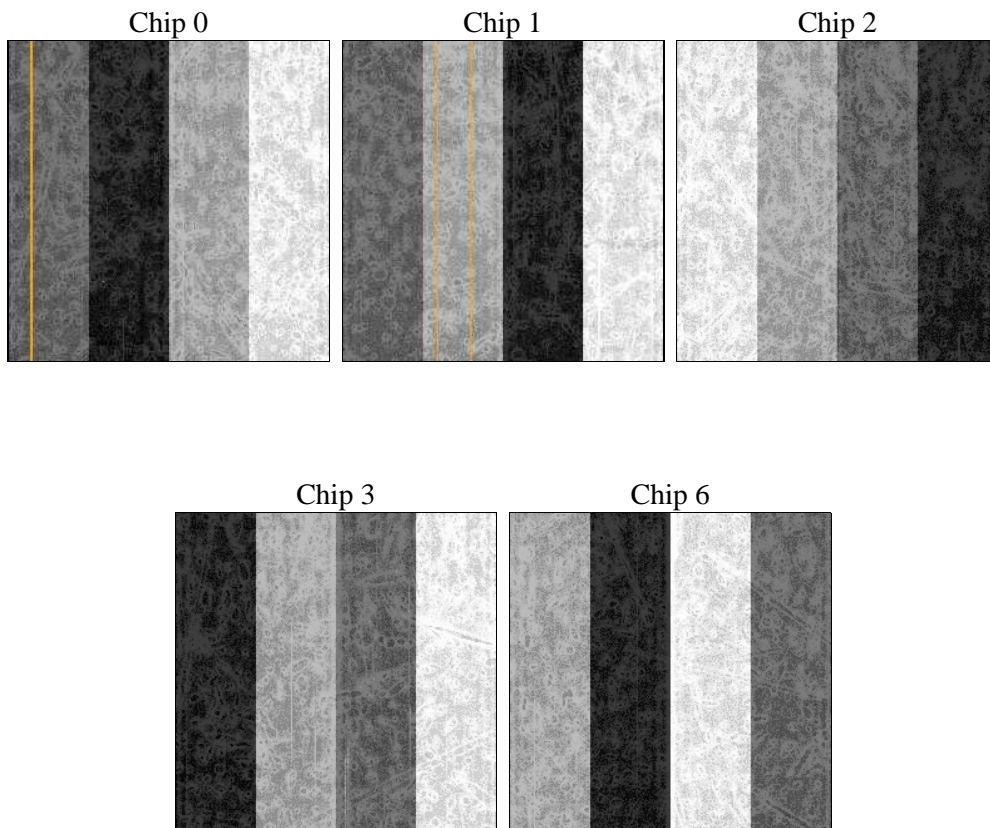
## 2 OBI

### 2.1 OBI

#### 2.1.1 Images



#### 2.1.2 Bias



### 2.1.3 Parameters

obi_num	0	Obi number	sched_exp_time	10000.000000	[s] Scheduled observation exposure time
ascdsver	8.4.3.1	Processing system revision	ontime	10164.899980426	Sum of GTIs [s]
caldbver	4.4.8	&#160	ontime0	10164.899980426	Sum of GTIs [s]
date	2012-03-24T05:57:27	Date and time of file creation	ontime1	10164.899980426	Sum of GTIs [s]
revision	2	Processing version of data	ontime2	10161.758990169	Sum of GTIs [s]
			ontime3	10164.899980426	Sum of GTIs [s]
			ontime6	10164.899980426	Sum of GTIs [s]
			l1events	370332	Number of level 1 events

### 2.1.4 Events

	ccd 0	ccd 1	ccd 2	ccd 3	ccd 6
level 1 events	75669	68984	80982	71035	73662
rejected events	59589	59982	69643	63883	66032
rejected %	78%	86%	85%	89%	89%

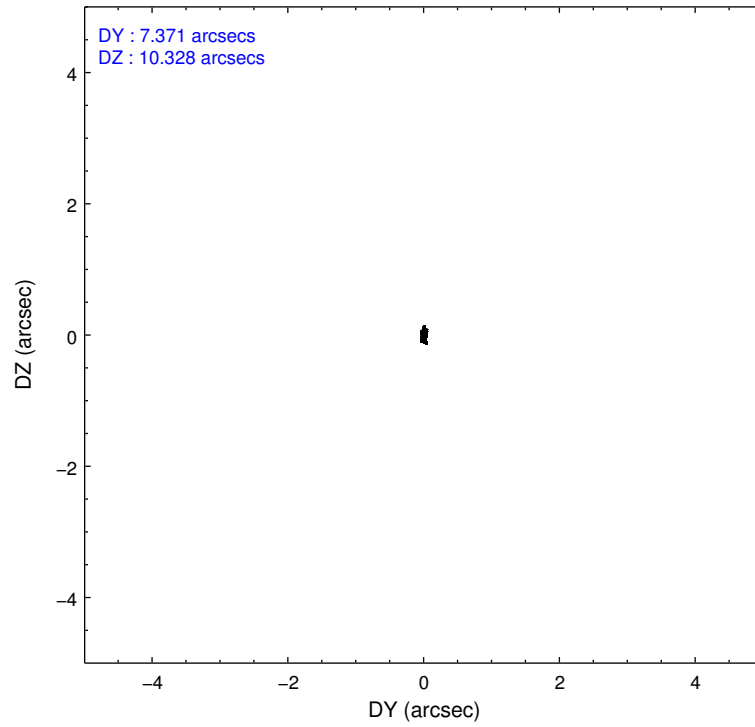
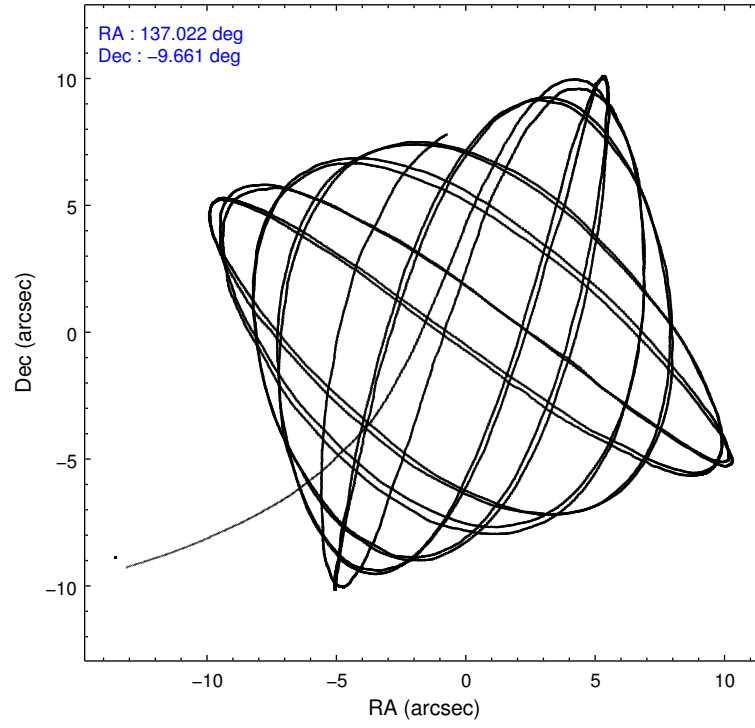
	ccd 0	ccd 1	ccd 2	ccd 3	ccd 6
grade 0 events	10143	4171	6482	2972	3022
	13%	6%	8%	4%	4%
grade 1 events	67	36	63	41	26
	0%	0%	0%	0%	0%
grade 2 events	2676	1905	2057	1509	1590
	3%	2%	2%	2%	2%
grade 3 events	1154	838	892	800	869
	1%	1%	1%	1%	1%
grade 4 events	1050	960	913	823	807
	1%	1%	1%	1%	1%
grade 5 events	2432	2751	2359	2832	2843
	3%	3%	2%	3%	3%
grade 6 events	1627	1590	1363	1348	1613
	2%	2%	1%	1%	2%
grade 7 events	56520	56733	66853	60710	62892
	74%	82%	82%	85%	85%

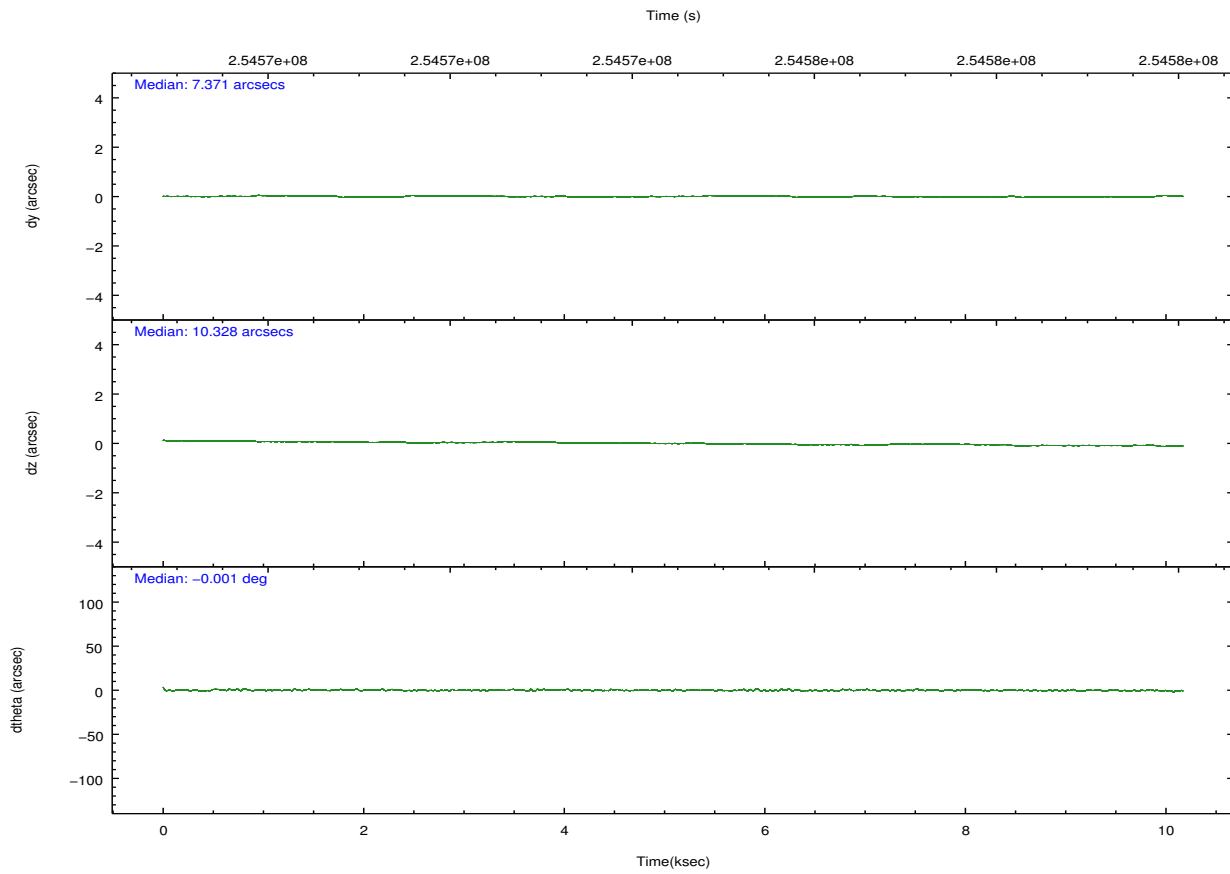
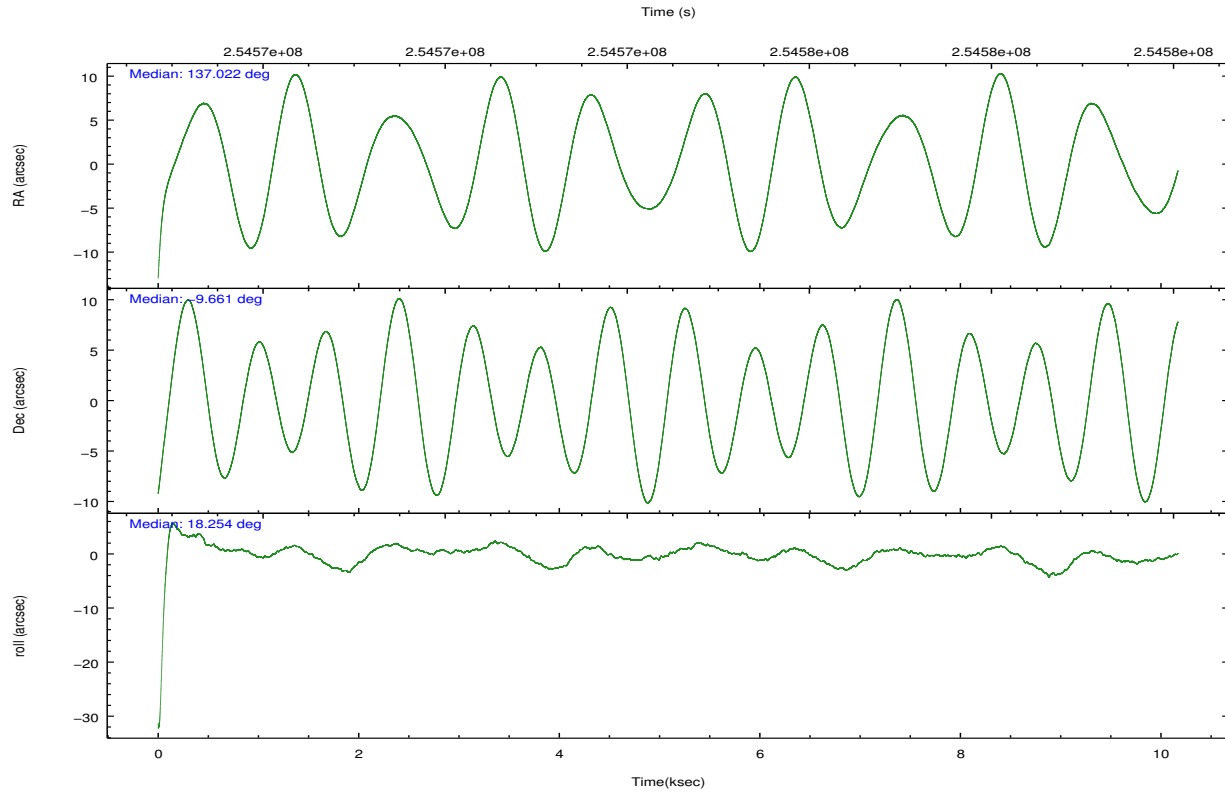


## 2.2 Compared Parameters

Parameter	Planned	Actual	Parameter	Planned	Actual
Instrument	ACIS	ACIS	Obspar format version number	7	7
Detector	ACIS-01236	ACIS-01236	Obspar file type	PREDICTED	ACTUAL
Grating	NONE	NONE	Obspar update status	NONE	UPDATED
Data mode	VFAINT	VFAINT	Number of optional ACIS chips dropped	0	0
Observation mode	POINTING	POINTING	On-chip summing requested	N	N
[deg] Pointing RA	137.003364	137.0217584597957	Subarray requested	NONE	NONE
[deg] Pointing Dec	-9.681720	-9.661188747762401	Alternating exposures requested	N	N
[deg] Pointing Roll	18.045558	18.25728952481734	[s] Primary exposure time	0.000000	3.1
[mm] SIM focus pos	-0.782348	-0.7809083437167272			
[mm] SIM defocus	0	0.001439871863259334			
[mm] SIM translation stage pos	-233.592463	-233.5874344608287			
[mm] SIM translation stage offset	0	-0.005018542100998502			
[s] Observation start time (MET)	254569531.184000	254568356.13862			
Observation start date	2006-01-25T09:44:26	2006-01-25T09:25:56			
[s] Observation end time (MET)	254579531.184000	254580503.92669			
Observation end date	2006-01-25T12:31:06	2006-01-25T12:48:23			
Read mode	TIMED	TIMED			

## 2.3 Aspect



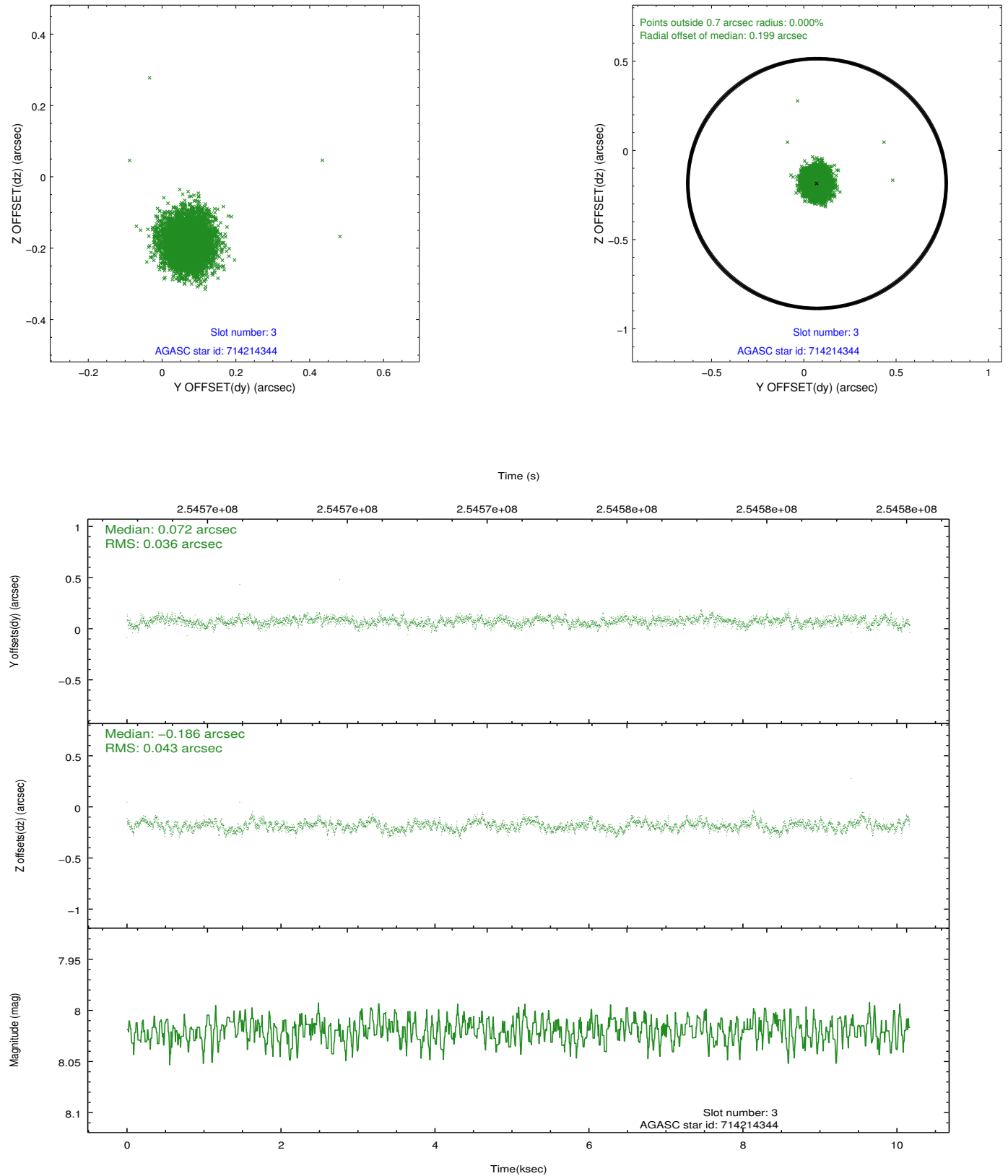


### Slot Statistics

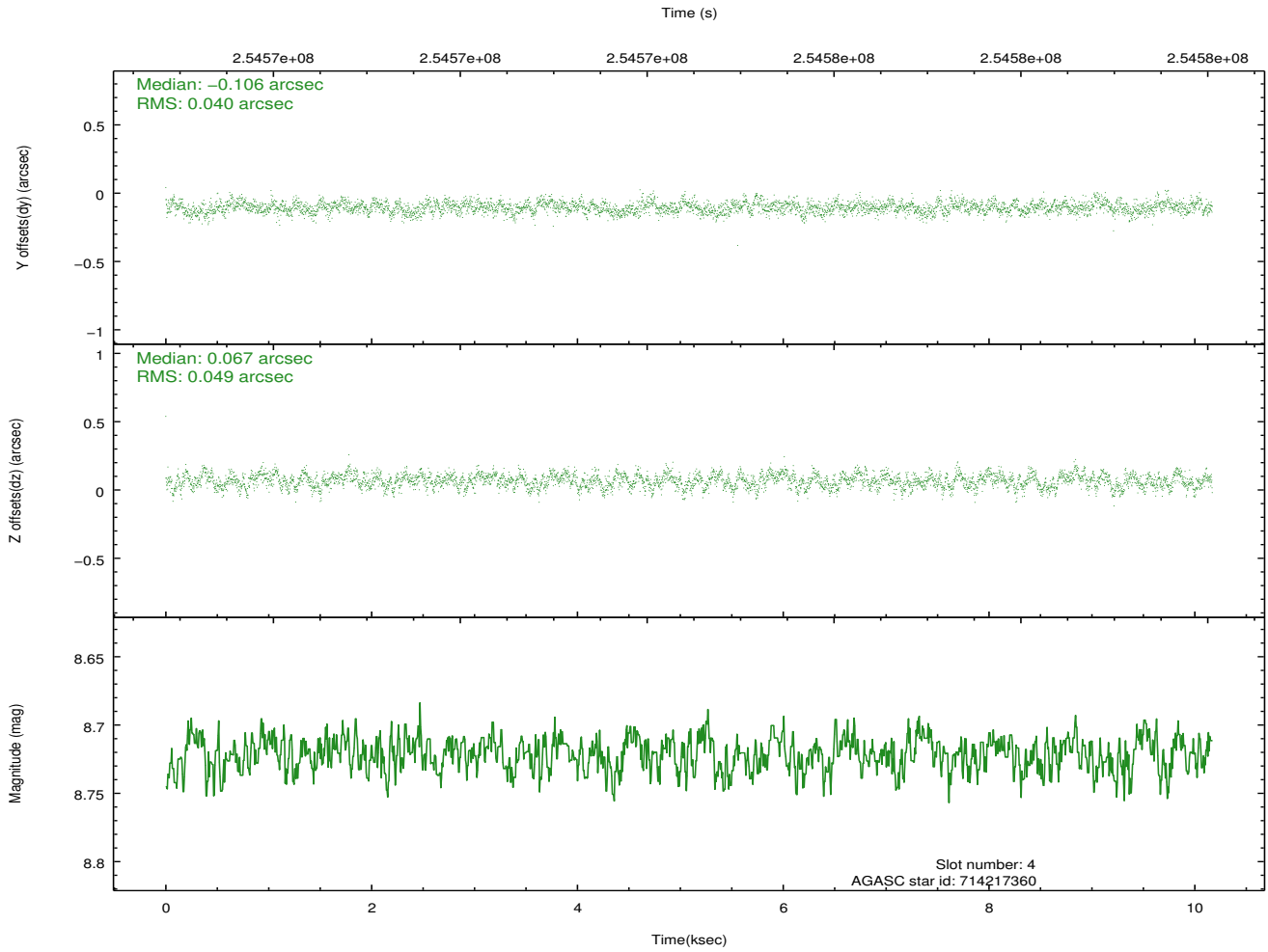
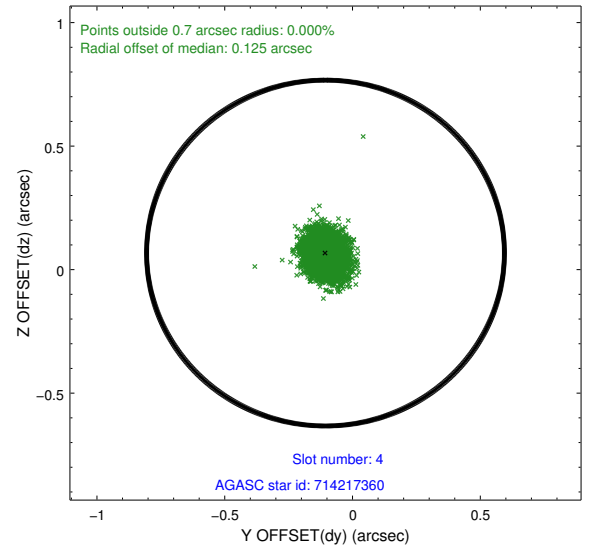
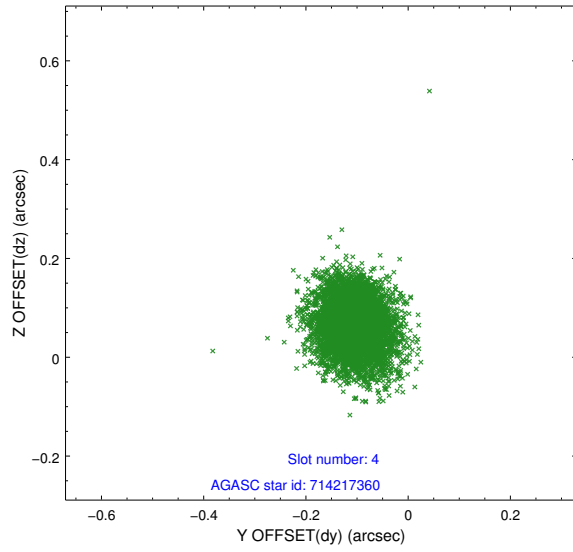
slot	status	id	mag	n_pts	med_dy	med_dz	dr1	dr2	ra	dec	mean_y	mean_z
0	FID	ACIS-I-1	7.24	2481	-0.020	-0.000	0.009	0.015	0.000000	0.000000	932.27	-833.81
1	FID	ACIS-I-4	7.18	2480	0.141	0.033	0.008	0.012	0.000000	0.000000	2152.78	1065.75
2	FID	ACIS-I-5	7.22	2481	-0.220	0.038	0.007	0.012	0.000000	0.000000	-1815.24	1064.24
3	GUIDE	714214344	8.02	4962	0.072	-0.186	0.059	0.095	136.639519	-9.759148	-1313.39	134.04
4	GUIDE	714217360	8.72	4961	-0.106	0.067	0.067	0.108	137.273046	-10.133687	404.80	-1843.25
5	GUIDE	714220096	8.14	4962	0.017	-0.046	0.051	0.085	137.167337	-9.384108	885.77	838.32
6	GUIDE	714220280	8.36	4961	0.069	0.064	0.068	0.111	136.555086	-10.133194	-2013.52	-1054.06
7	GUIDE	714222888	7.23	4961	-0.053	0.101	0.050	0.079	137.419411	-9.937881	1116.75	-1334.66

## 2.4 Star Slots

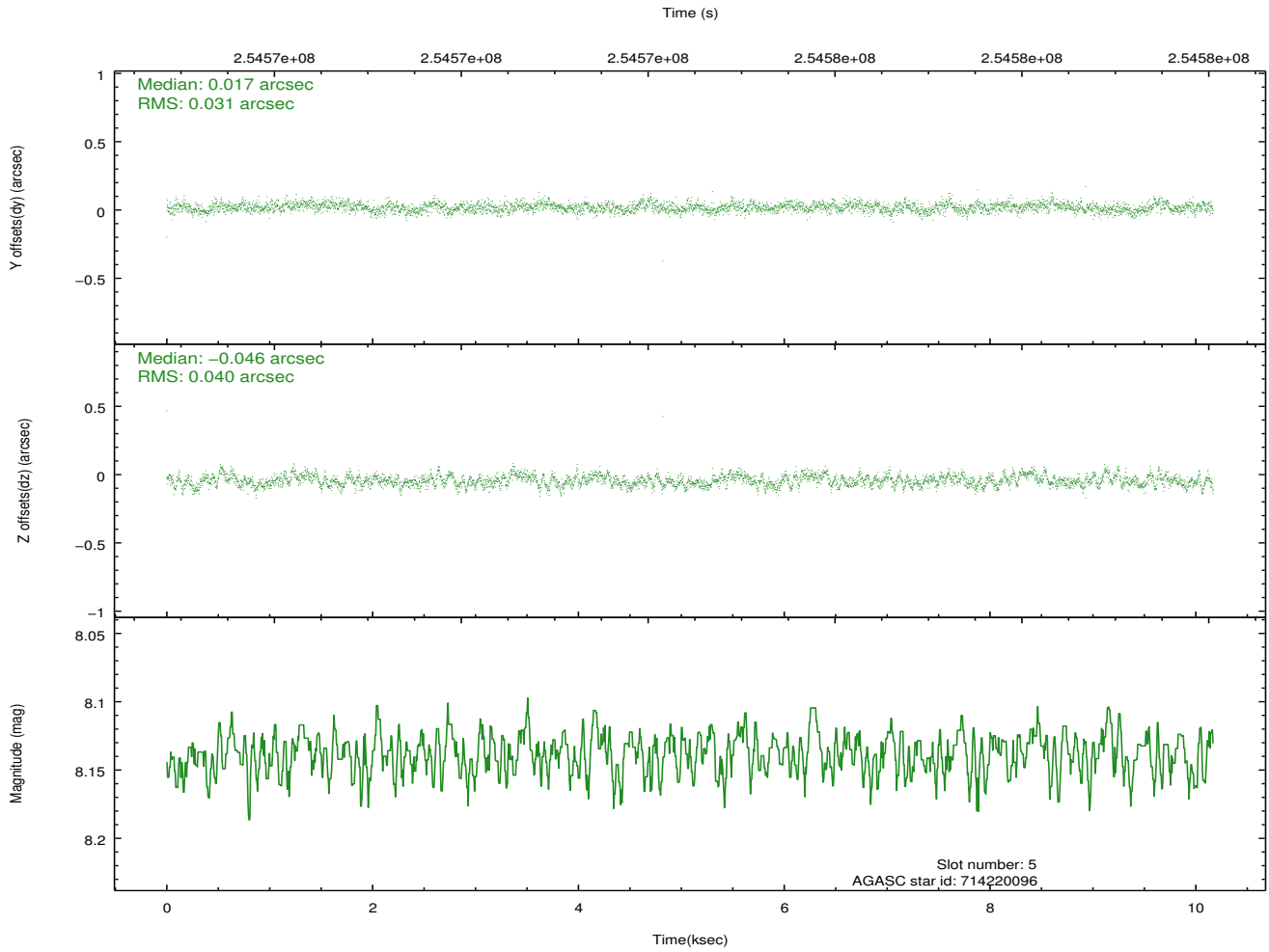
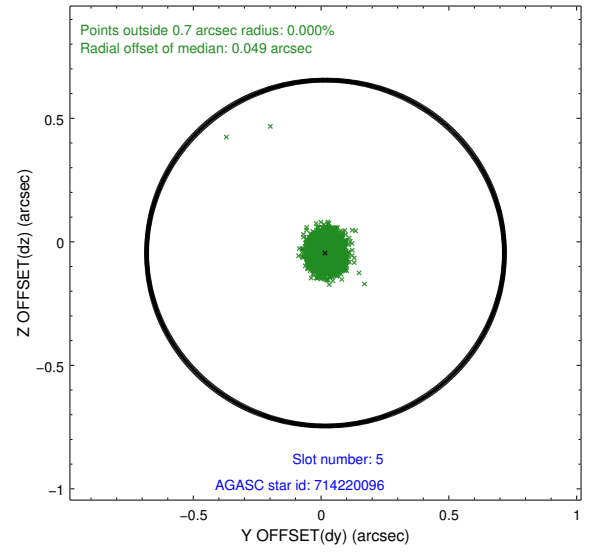
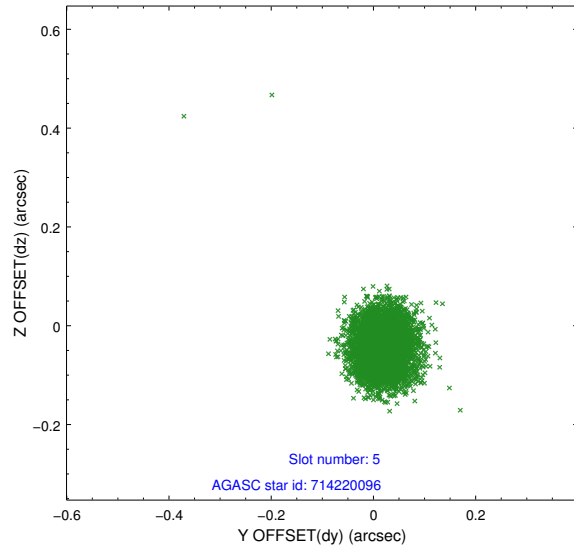
### 2.4.1 Slot 3



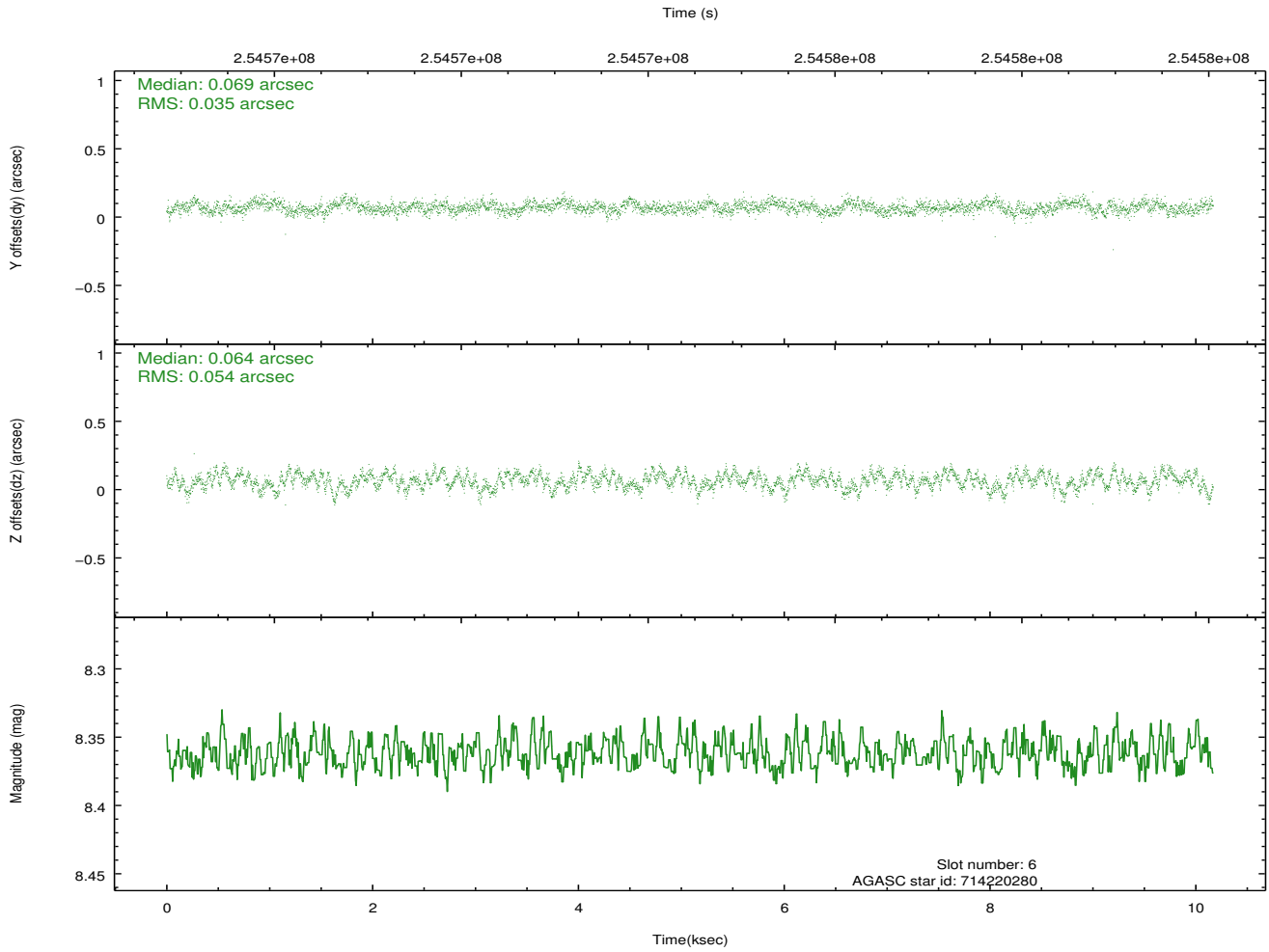
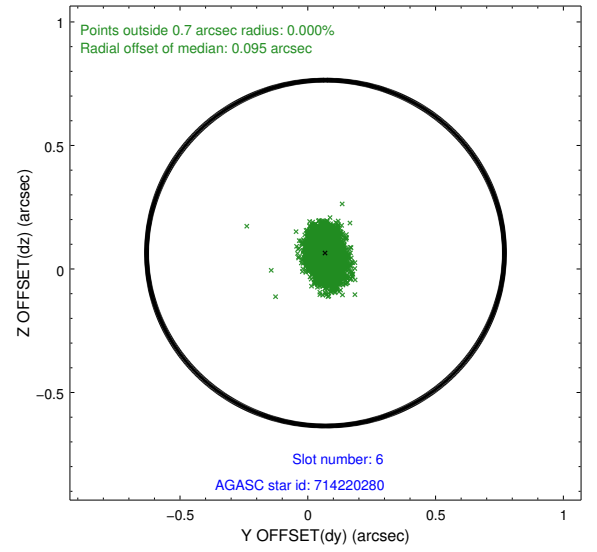
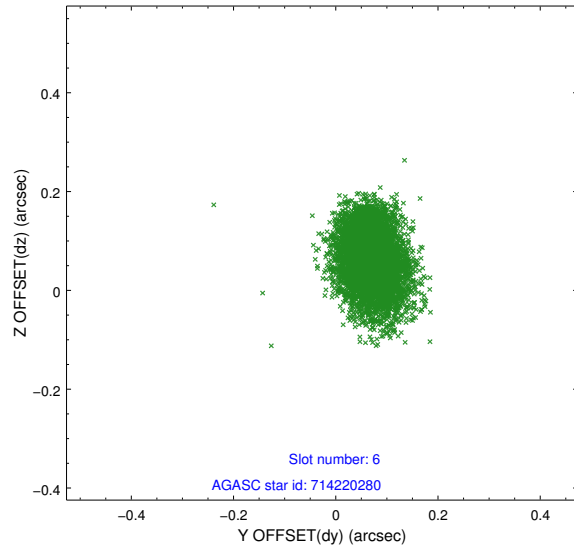
## 2.4.2 Slot 4



### 2.4.3 Slot 5

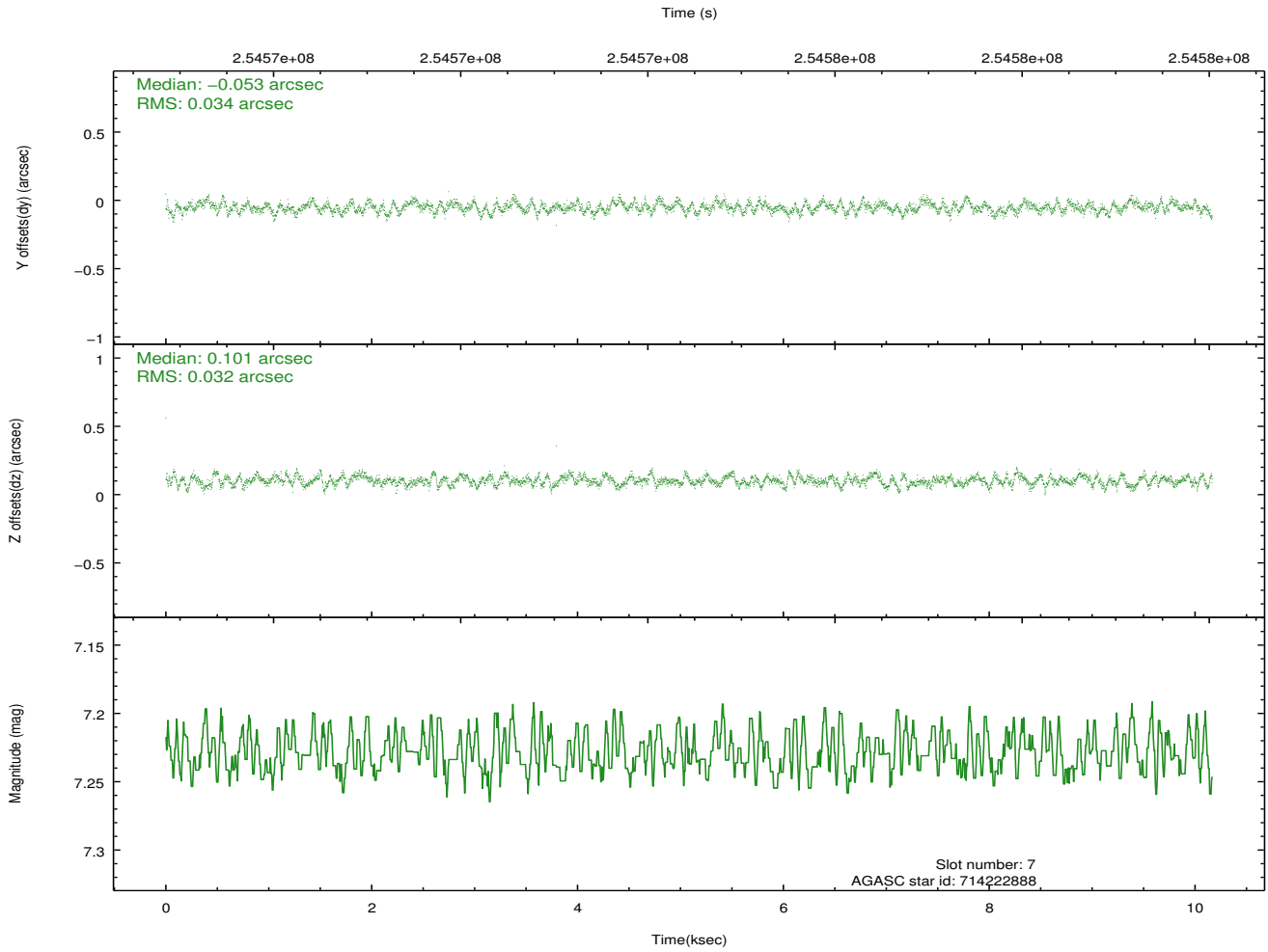
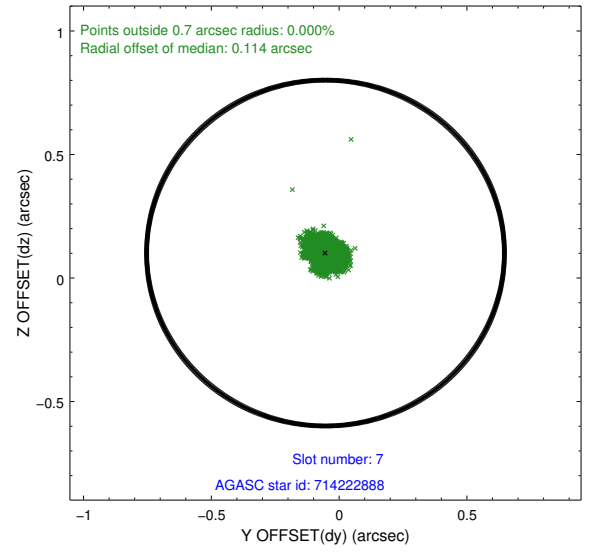
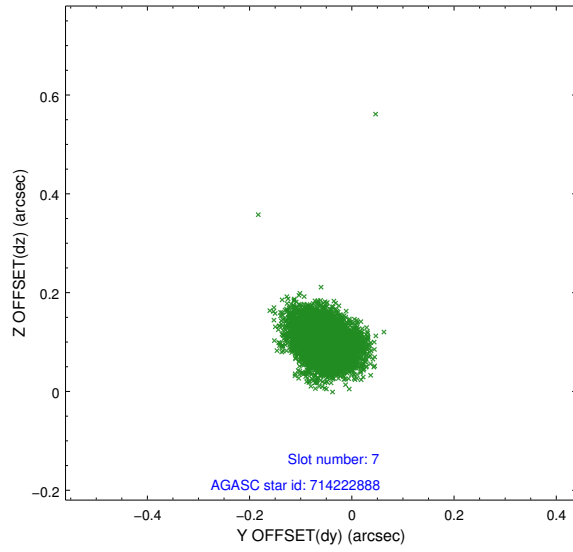


## 2.4.4 Slot 6



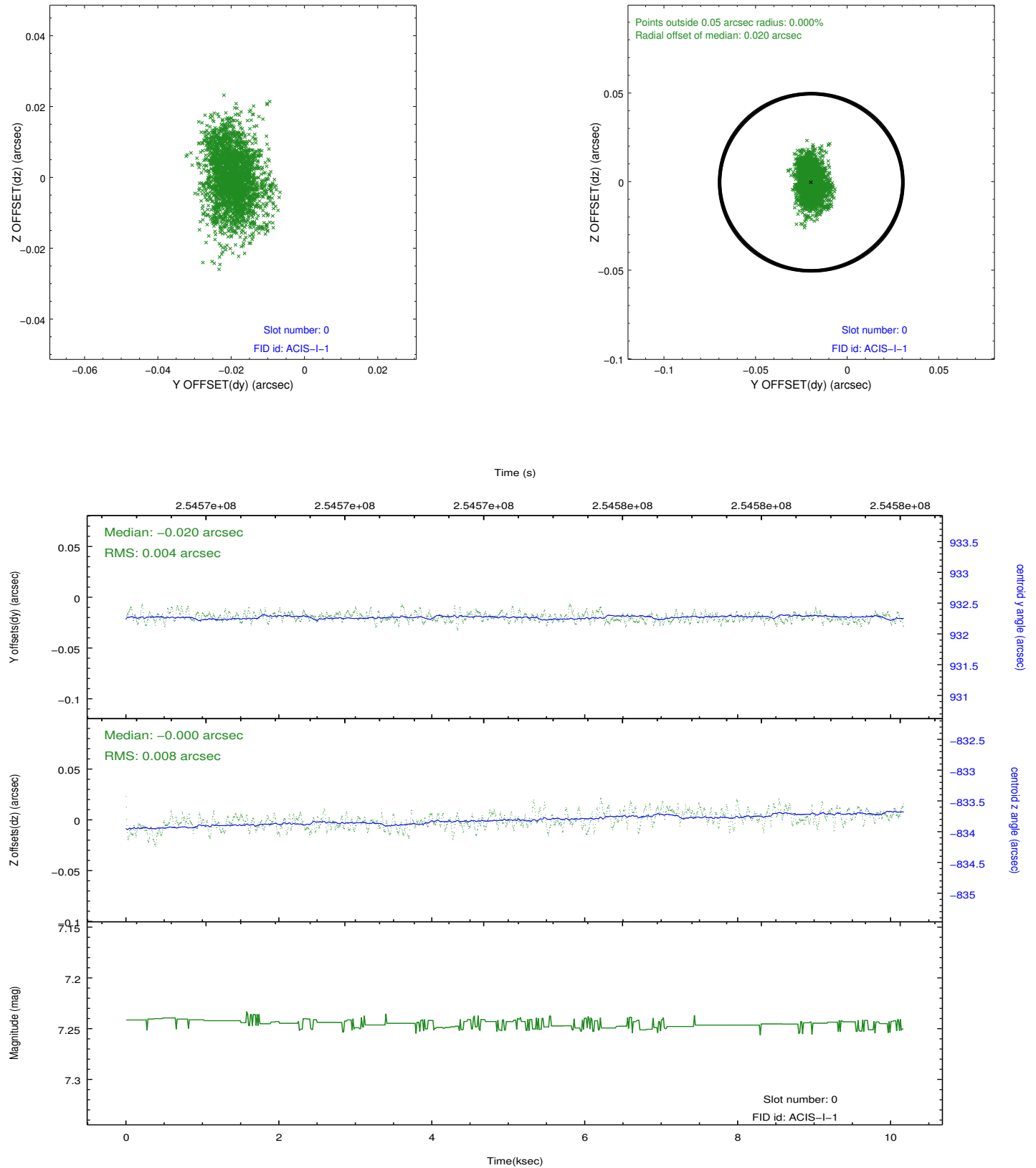


## 2.4.5 Slot 7

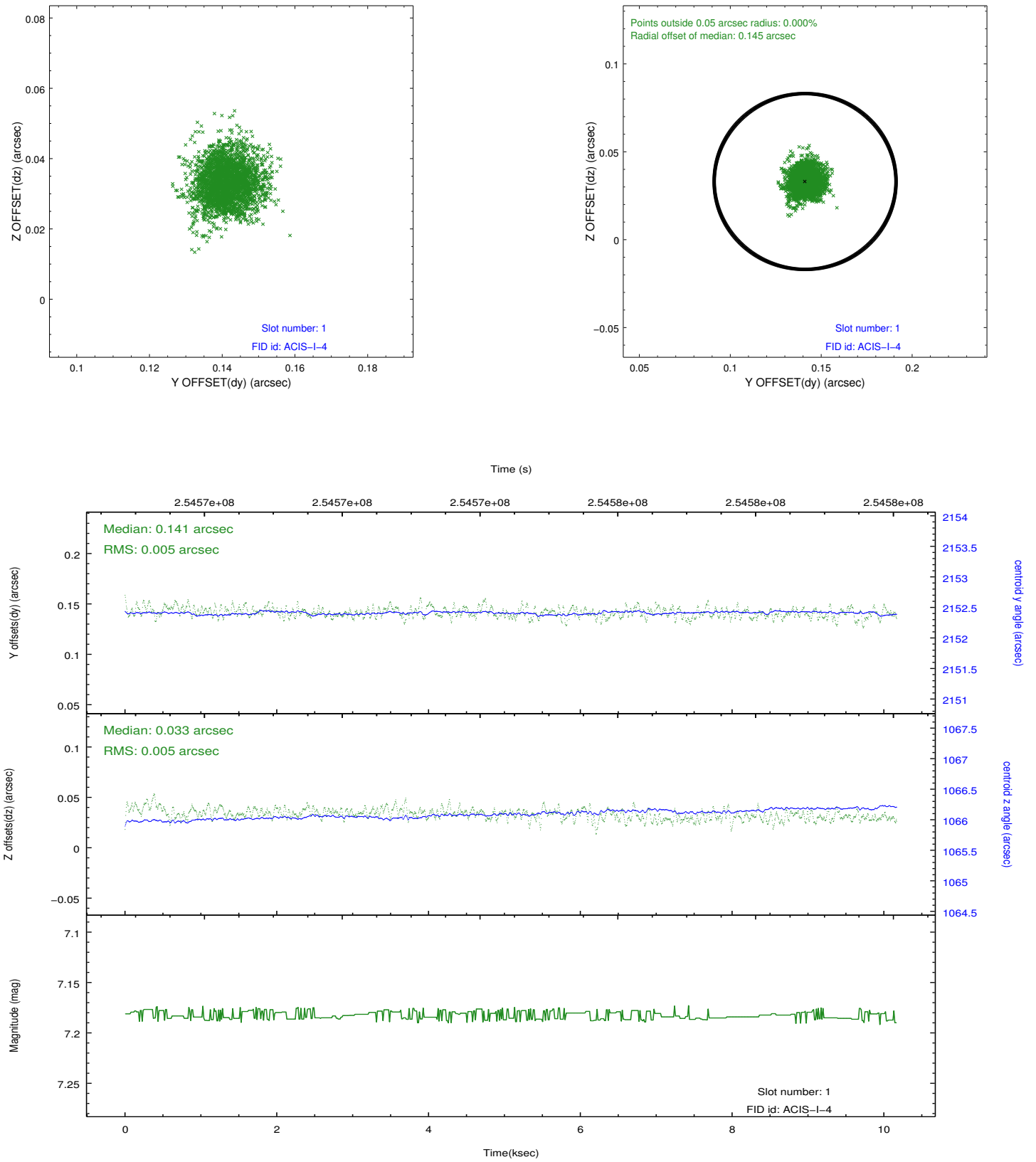


## 2.5 FID Slots

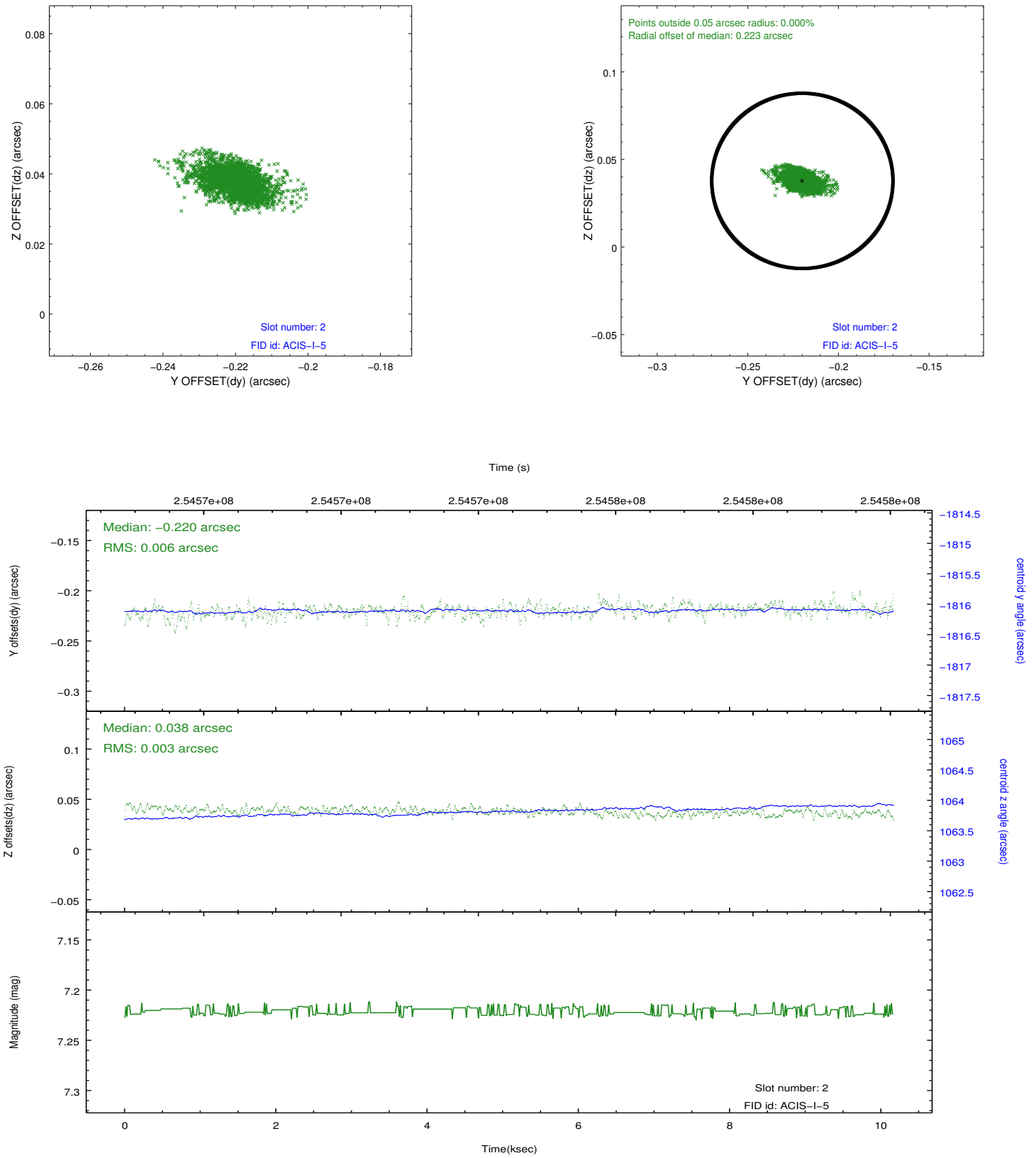
### 2.5.1 Slot 0



## 2.5.2 Slot 1



### 2.5.3 Slot 2



## A Summary

### A.1 Status

V&V Scientist	Jen Lauer
V&V Date (YYYY-MM-DD)	2012.03.26
V&V Edition	1
V&V Disposition and Status	OK
V&V Charge Time	10.1648999

### A.2 Comments