

V&V Reference Report

L2 ASCDS Version : 8.2.1

Observation 67 - L2 Version 3

Chandra X-Ray Center

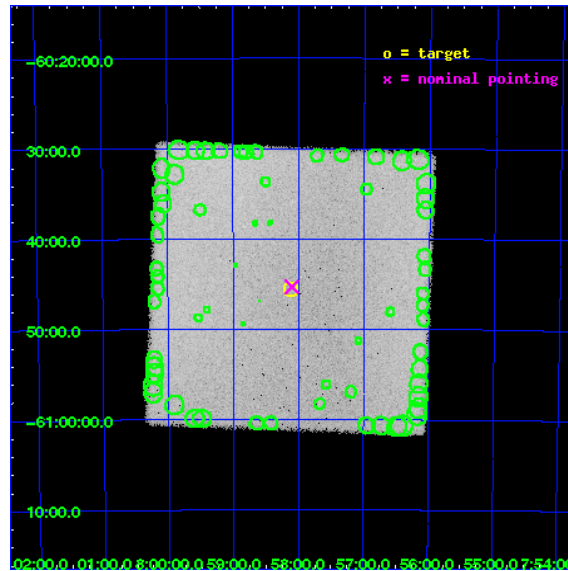
L2 Processing Date : Jan 12 2010

Contents

1	Front	2
2	OBI	3
2.1	OBI	3
2.1.1	Images	3
2.1.2	Parameters	4
2.1.3	Events	4
2.2	Compared Parameters	5
2.3	Aspect	6
2.4	Star Slots	9
2.4.1	Slot 3	9
2.4.2	Slot 4	10
2.4.3	Slot 5	11
2.4.4	Slot 6	12
2.4.5	Slot 7	13
2.5	FID Slots	14
2.5.1	Slot 0	14
2.5.2	Slot 2	15
3	Point Sources	16
A	Summary	17
A.1	Status	17
A.2	Comments	17

1 Front

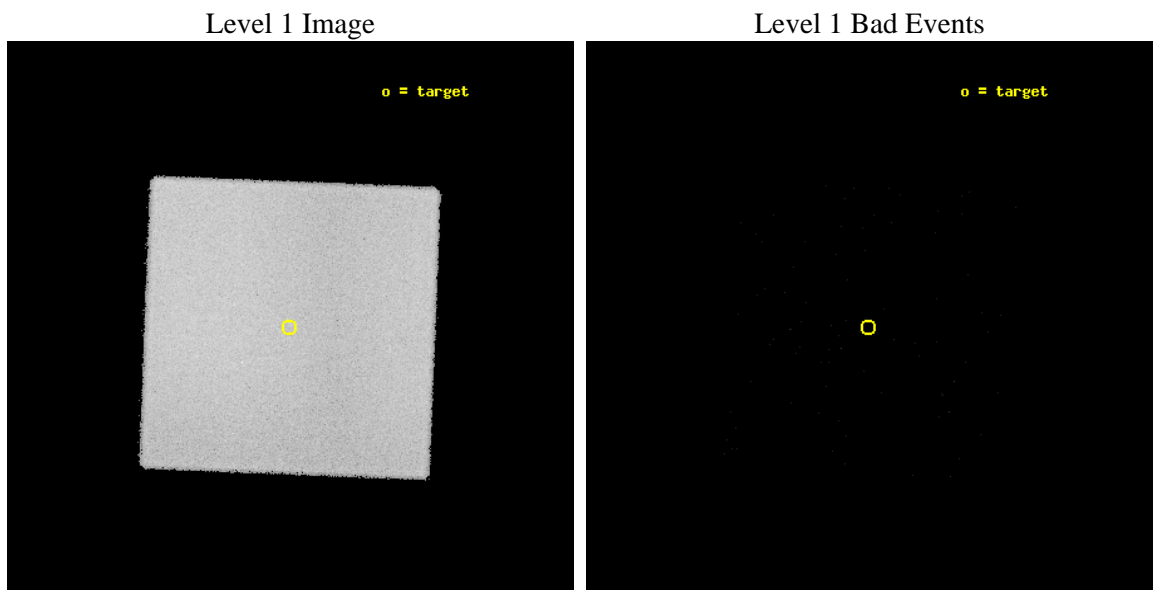
seq_num	290036	Sequence number
obs_id	67	Observation id
title	CALIBRATION OBSERVATION NGC 2516 FOR BORESIGHTING AND PLATE SCALE	
observer	Dr. CXC Calibration	Principal investigator
object	NGC 2516	Source name
ra_targ	119.529583	Observer's specified target RA
dec_targ	-60.76	Observer's specified target Dec
ra_nom	119.52571910166	Nominal RA
dec_nom	-60.75536525322	Nominal Dec
roll_nom	137.26511747962	Nominal Roll
revision	3	Processing version of data
ontime	9797.2066018581	[s]
livetime	9715.3725700906	Ontime multiplied by DTCOR
l2events	377699	Number of level 2 events



2 OBI

2.1 OBI

2.1.1 Images



2.1.2 Parameters

obi_num	0	Obi number	sched_exp_time	10000.000000	Scheduled observation exposure time
ascdsver	8.2.1	Processing system revision	ontime	9797.2066018581	[s]
caldbver	4.1.5	 	ll events	650800	Number of level 1 events
date	2010-01-12T20:59:30	Date and time of file creation			
revision	3	Processing version of data			

2.1.3 Events

Level 1 Events

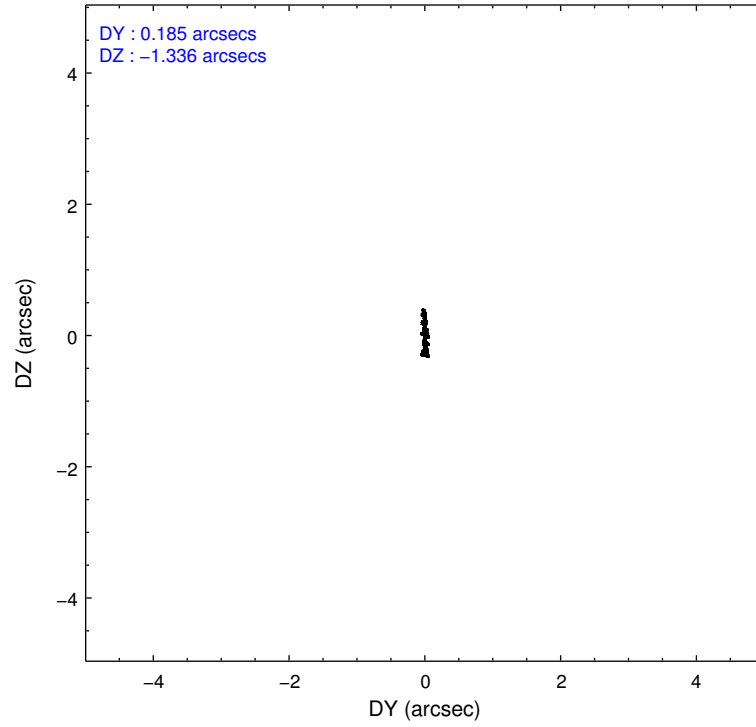
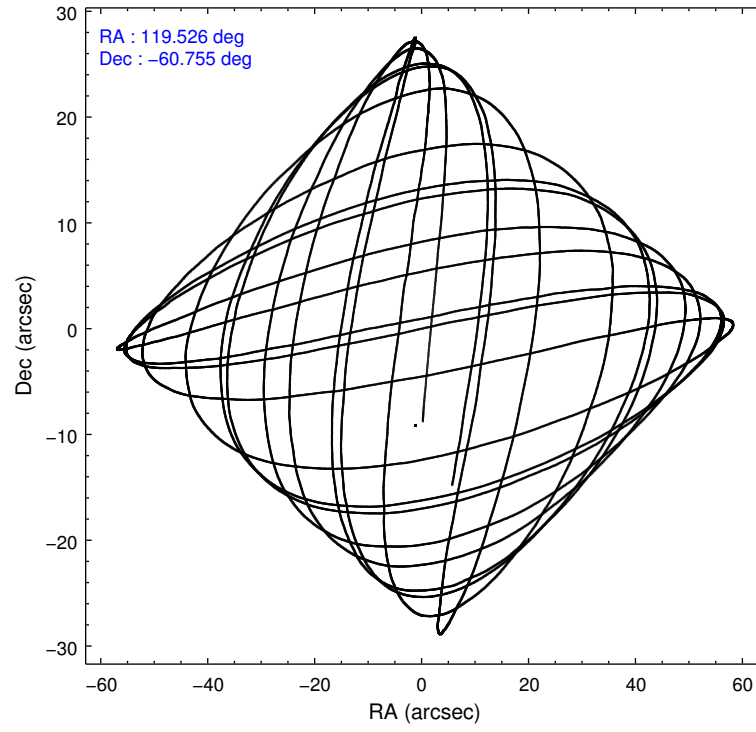
	segment 0
level 1 events	650800
rejected events	2847
rejected %	0%

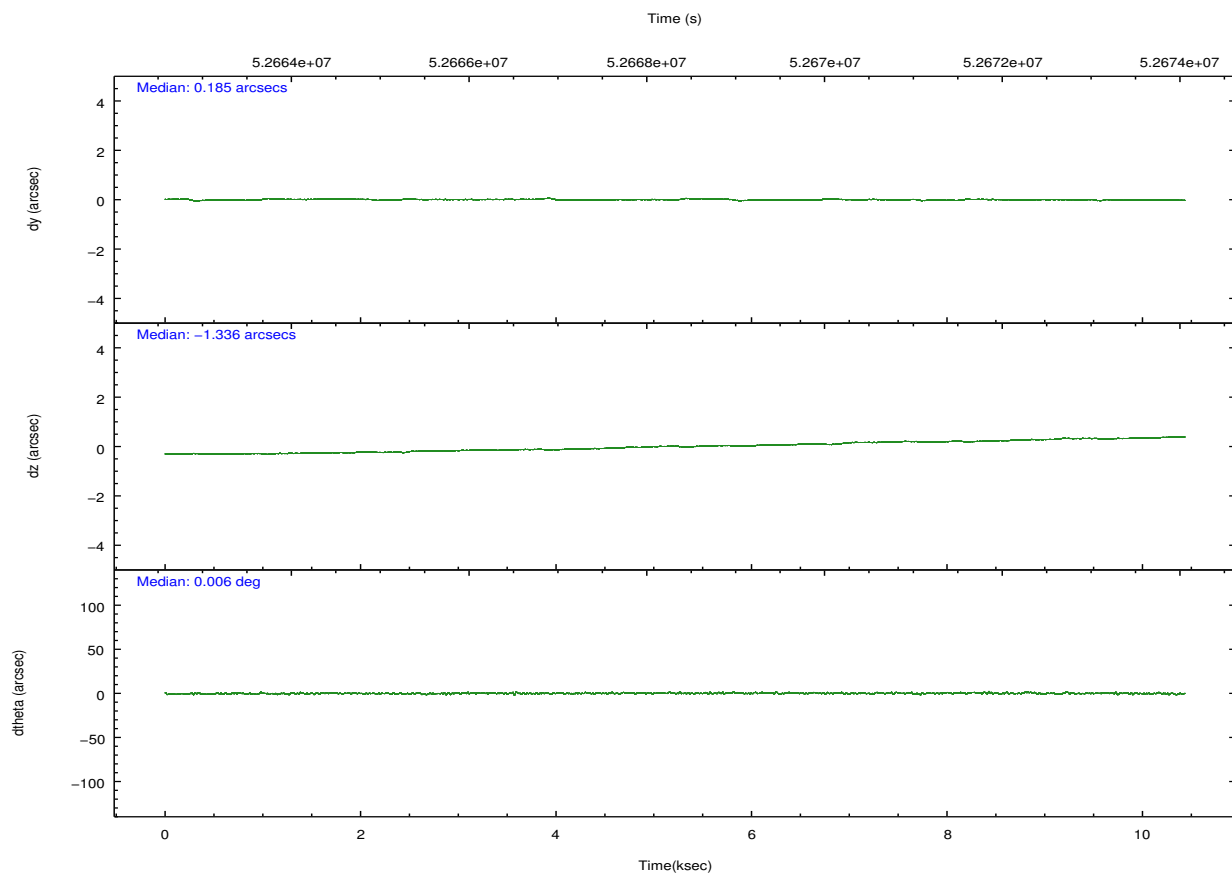
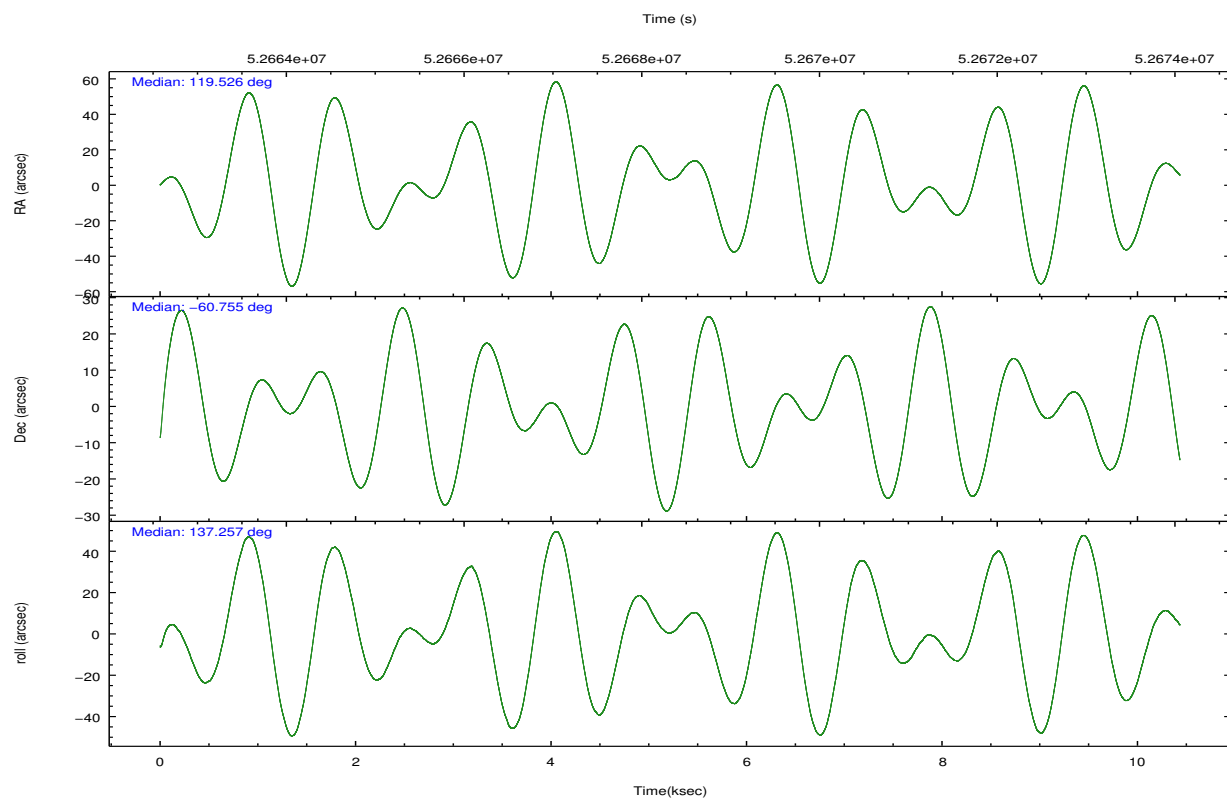
2.2 Compared Parameters

Parameter	Planned	Actual
Instrument	HRC	HRC
Detector	HRC-I	HRC-I
Grating	NONE	NONE
Data mode	OBSERVING	OBSERVING
Observation mode	POINTING	POINTING
Pointing RA	119.580427	119.5257191016557
Pointing Dec	-60.761547	-60.75536525321989
Pointing Roll	137.408358	137.2651174796204
SIM focus pos (mm)	-1.040293	-1.016036269358593
SIM defocus (mm)	0	0.02425635130028114
SIM translation stage pos (mm)	126.985494	126.9854943052878
SIM translation stage offset (mm)	0	-5.413686238853188e-06
Observation start time	52663534.184000	52662132.379531
Observation start date	1999-09-02T12:44:30	1999-09-02T12:22:12
Observation end time	52673534.184000	52673668.242445
Observation end date	1999-09-02T15:31:10	1999-09-02T15:34:28

Parameter	Planned	Actual
Obspar format version number	6	6
Obspar file type	PREDICTED	ACTUAL
Obspar update status	NONE	UPDATED

2.3 Aspect



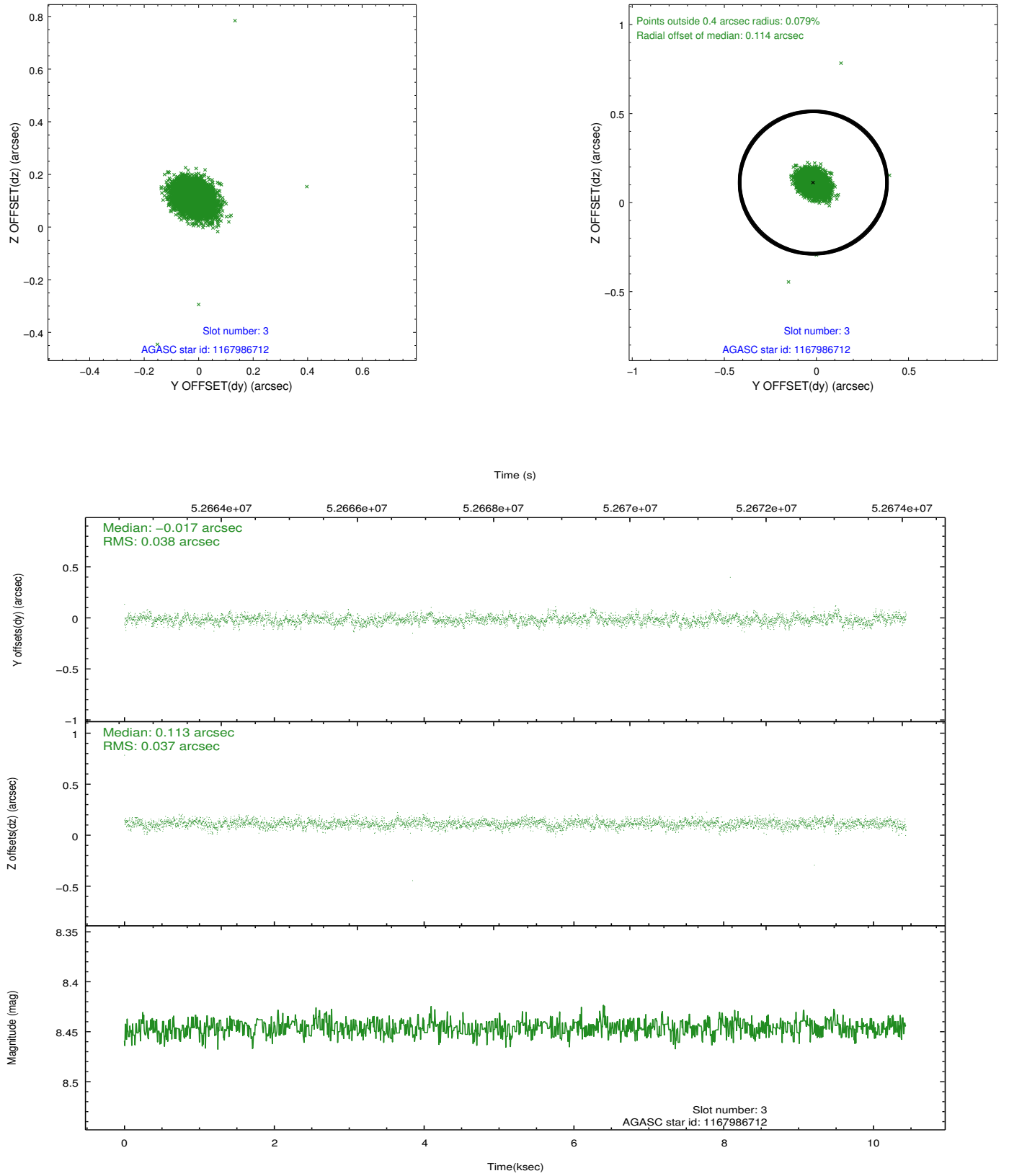


Slot Statistics

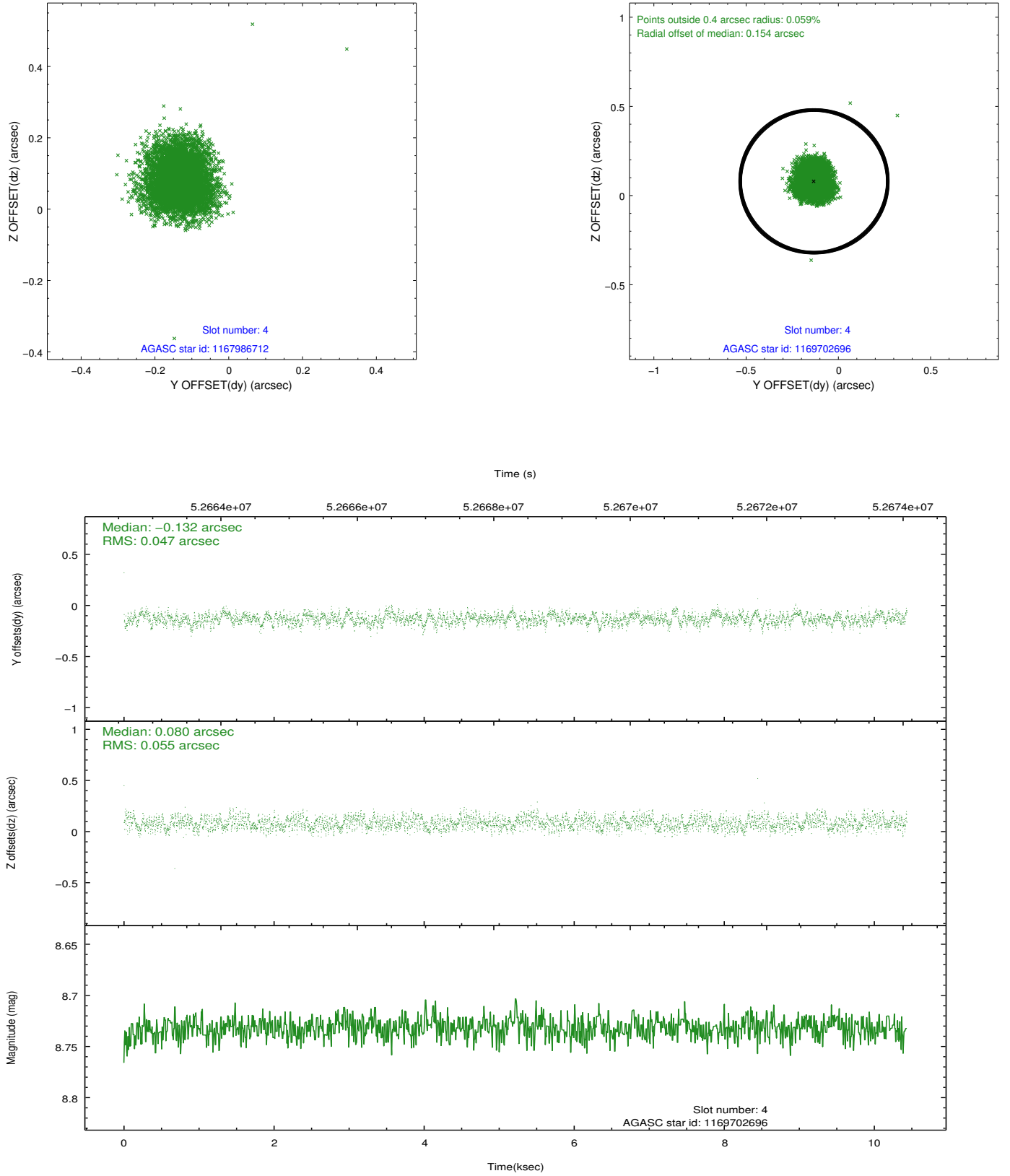
slot	status	id	mag	n_pts	med_dy	med_dz	dr1	dr2	ra	dec	mean_y	mean_z
0	FID	HRC-I-1	6.96	5091	0.017	-0.055	0.004	0.007	0.000000	0.000000	-755.51	-1286.42
1	UNUSED		0.00	0	0.000	0.000	0.000	0.000	0.000000	0.000000	0.00	0.00
2	FID	HRC-I-4	6.98	5090	0.057	-0.007	0.004	0.007	0.000000	0.000000	1287.08	1015.64
3	GUIDE	1167986712	8.45	5090	-0.017	0.113	0.054	0.089	119.099343	-60.382718	1550.73	-421.21
4	GUIDE	1169702696	8.73	5089	-0.132	0.080	0.077	0.120	120.944763	-60.544109	-1265.07	-2191.58
5	GUIDE	1167997272	9.29	5089	-0.042	-0.091	0.085	0.134	118.927163	-61.353075	-615.88	2335.21
6	GUIDE	1122633360	9.24	5089	0.137	-0.086	0.100	0.160	119.617986	-59.961517	1899.42	-2164.61
7	GUIDE	1168005096	9.60	5088	0.042	-0.019	0.104	0.164	119.552642	-61.434514	-1604.57	1816.23

2.4 Star Slots

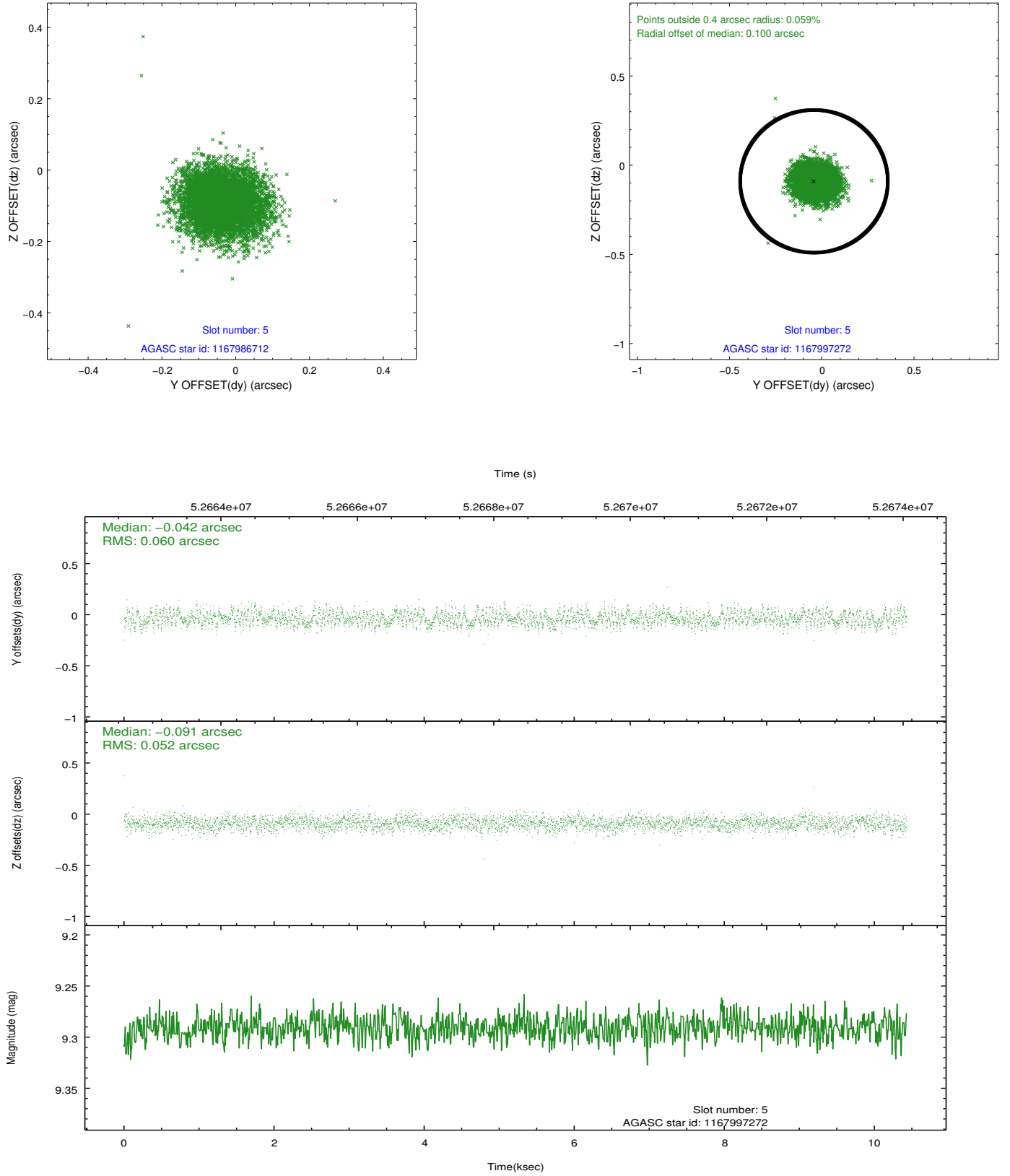
2.4.1 Slot 3



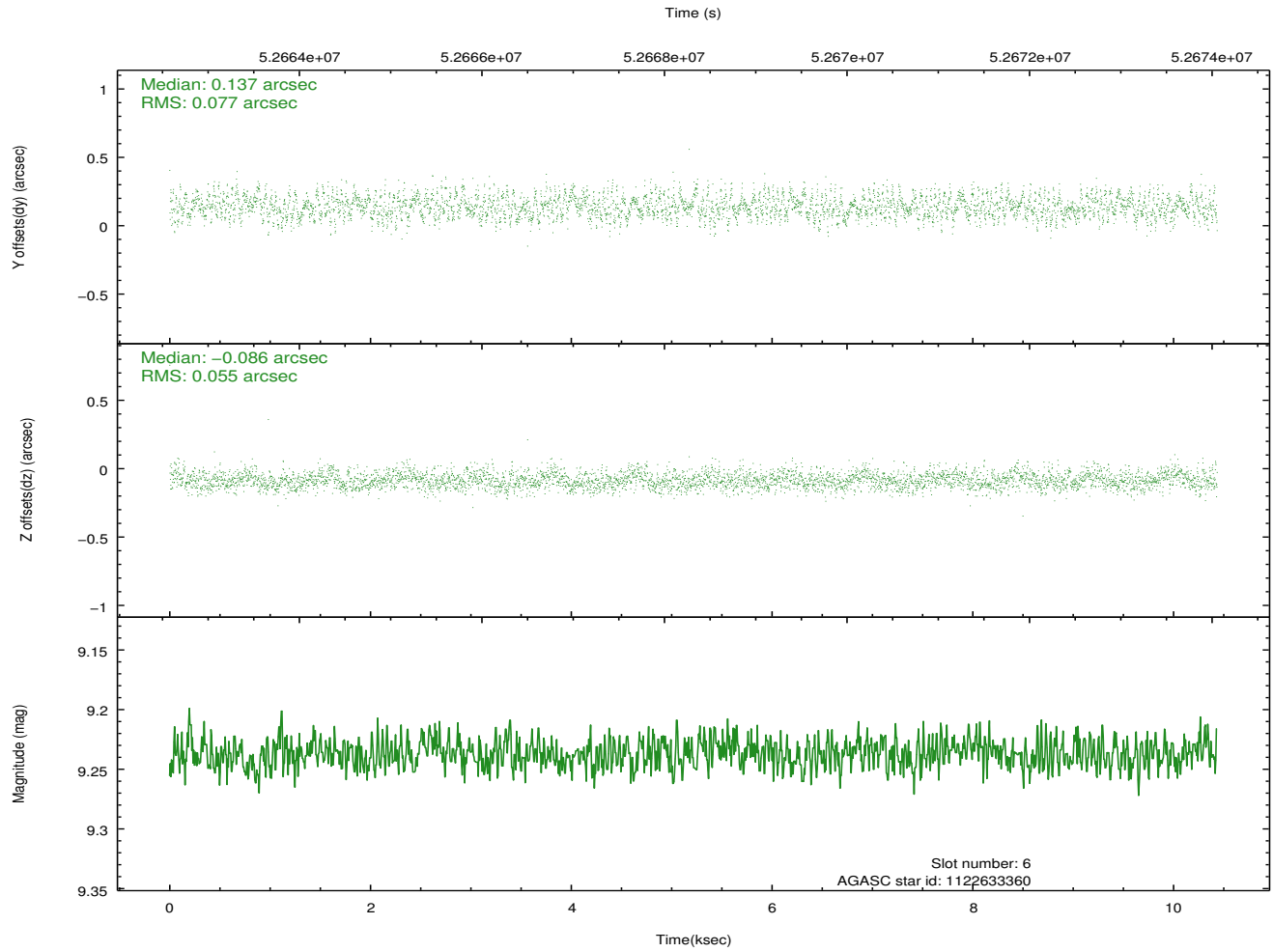
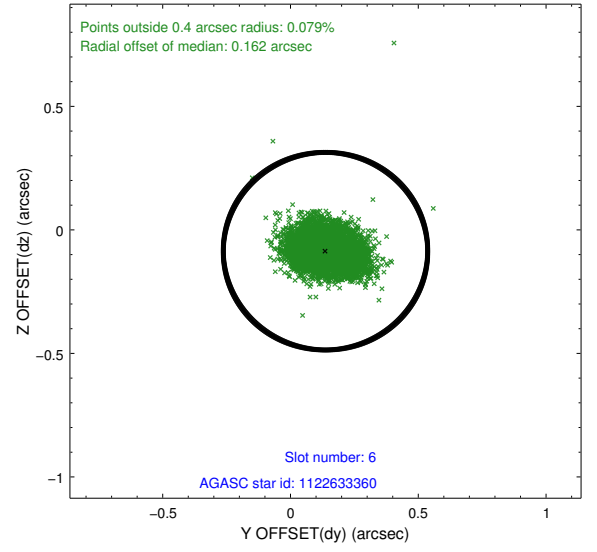
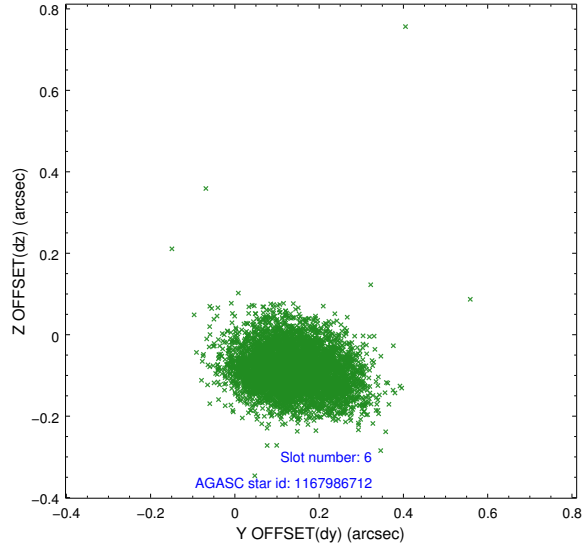
2.4.2 Slot 4



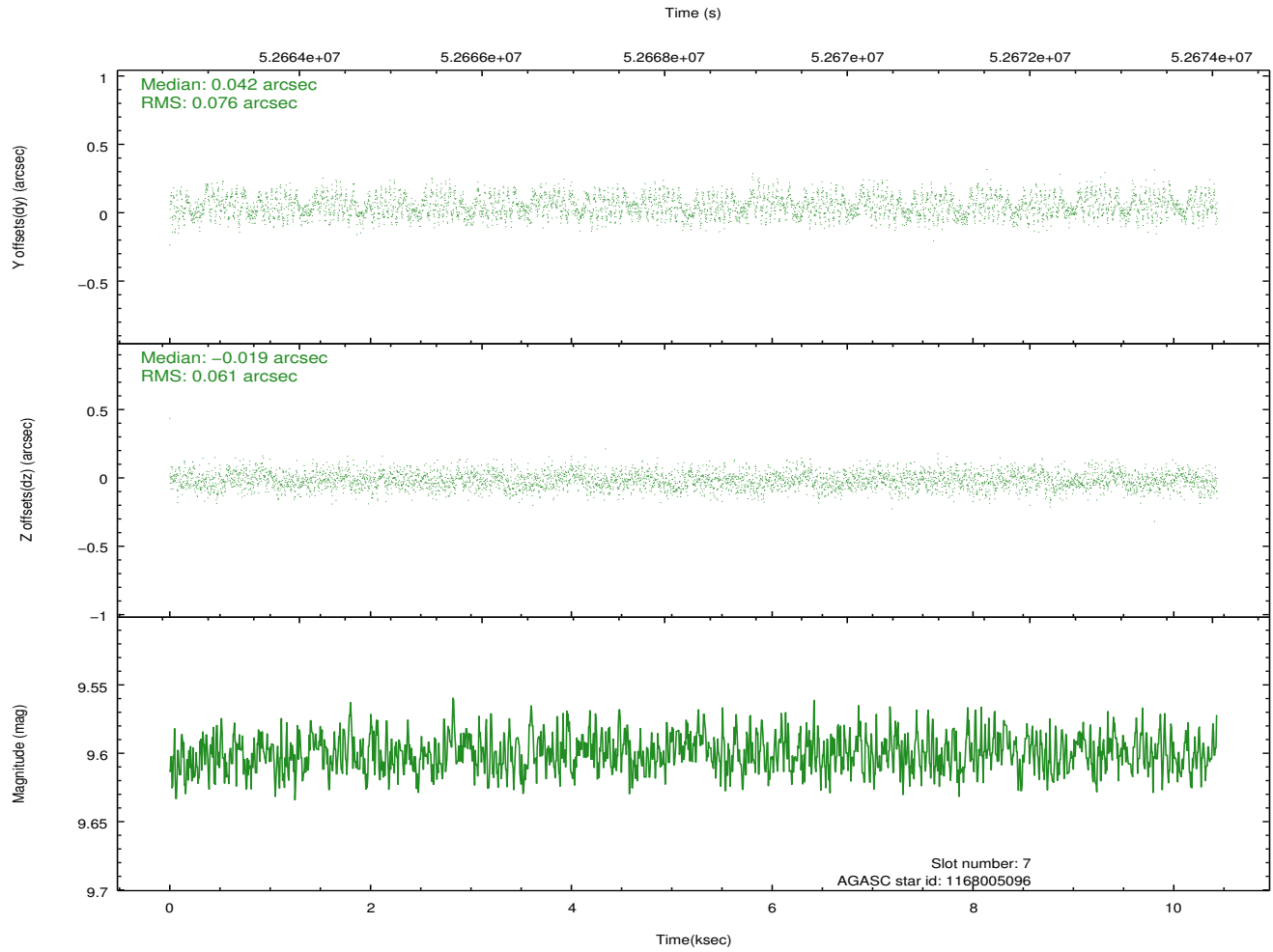
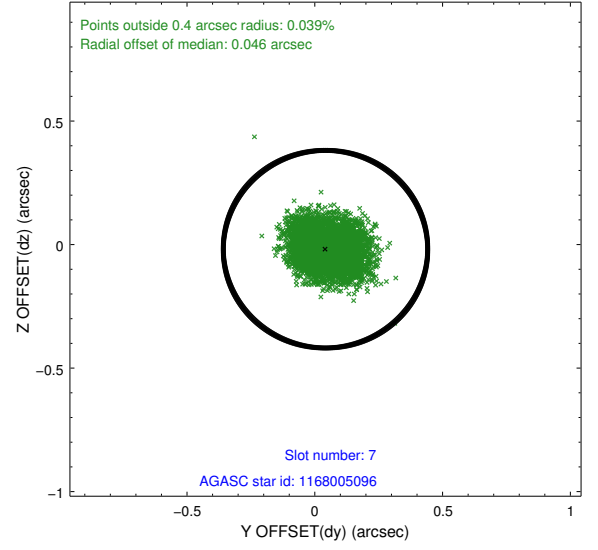
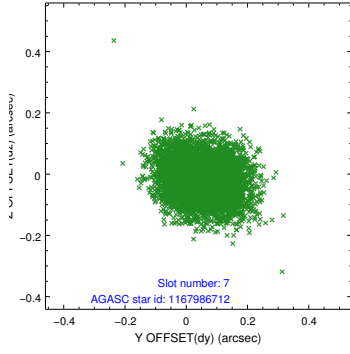
2.4.3 Slot 5



2.4.4 Slot 6

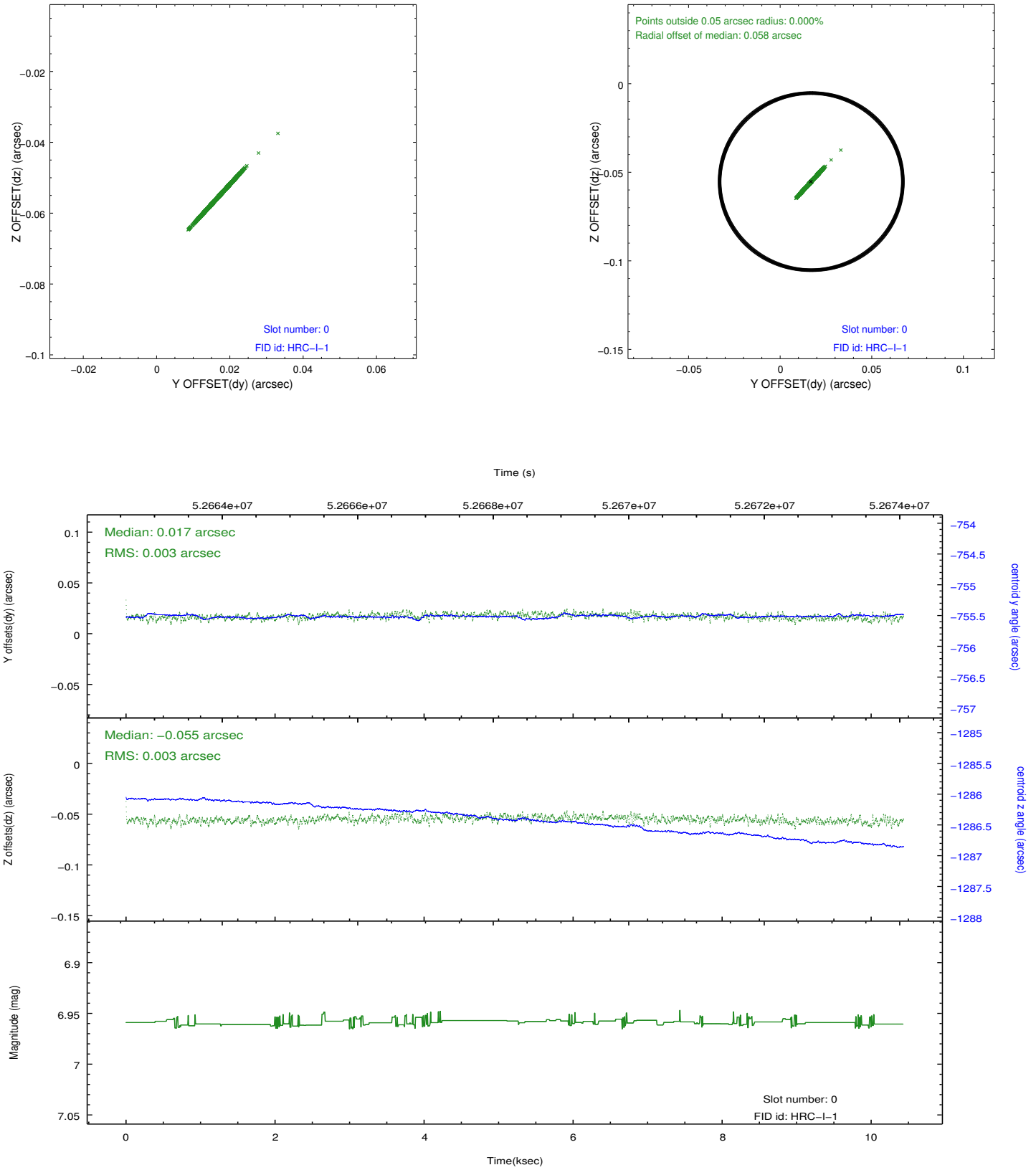


2.4.5 Slot 7

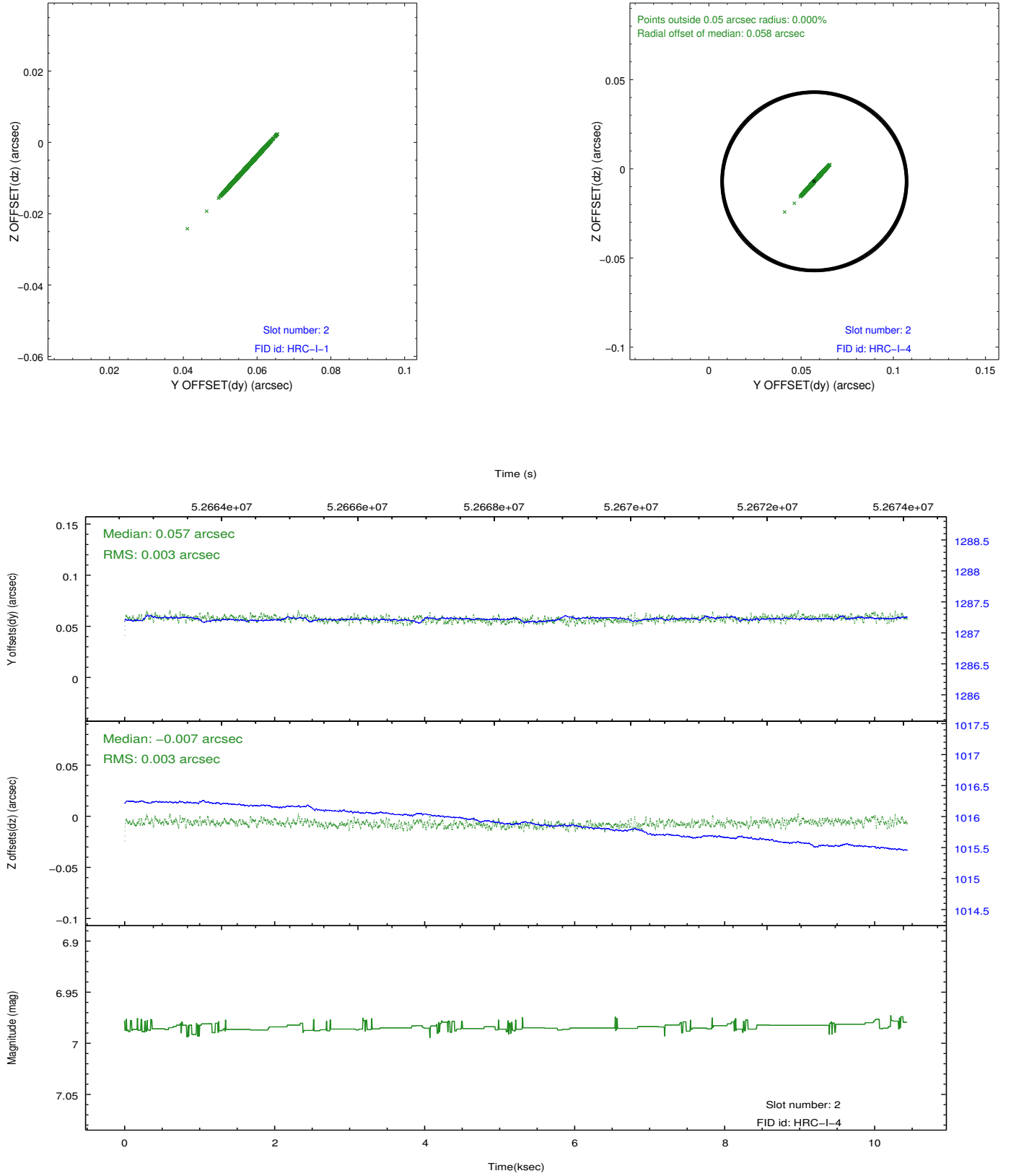


2.5 FID Slots

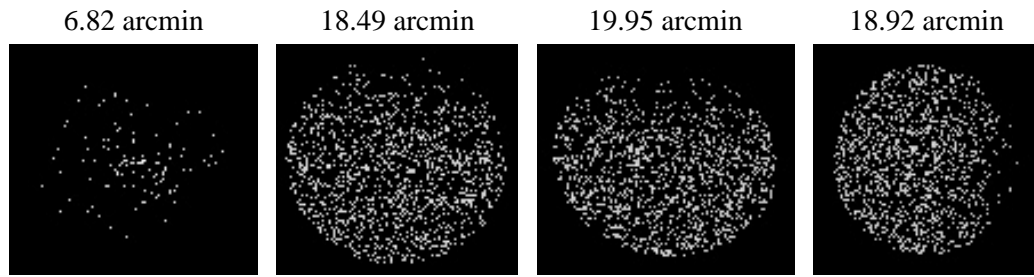
2.5.1 Slot 0



2.5.2 Slot 2



3 Point Sources



A Summary

A.1 Status

V&V Scientist	Joy Nichols
V&V Date (YYYY-MM-DD)	2010.01.19
V&V Edition	1
V&V Disposition and Status	OK
V&V Charge Time	9.797

A.2 Comments

Boresight and plate scale calibration.

=====The fid light in slot 1 was removed from the aspect solution due to poor data quality. The aspect solution is not expected to be degraded by removing one fid light from the solution.