

# V&V Reference Report

## L2 ASCDS Version : 8.4.3

Observation 6457 - L2 Version 3  
Chandra X-Ray Center

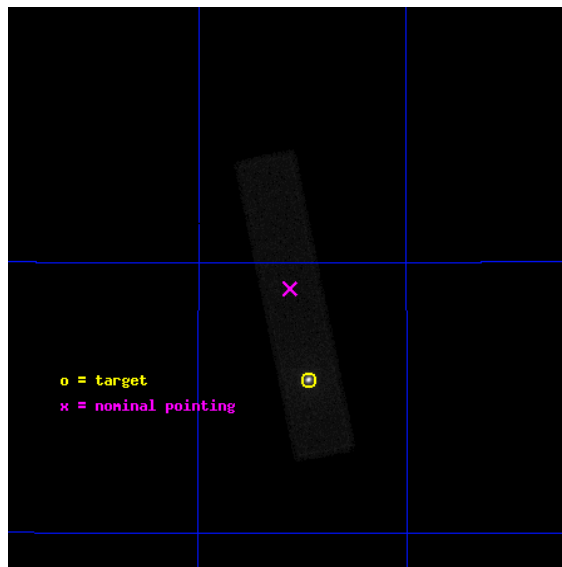
L2 Processing Date : Aug 11 2012

## Contents

<b>1</b>	<b>Front</b>	<b>2</b>
<b>2</b>	<b>OBI</b>	<b>3</b>
2.1	OBI . . . . .	3
2.1.1	Images . . . . .	3
2.1.2	Parameters . . . . .	4
2.1.3	Events . . . . .	4
2.2	Compared Parameters . . . . .	5
2.3	Aspect . . . . .	6
2.4	Star Slots . . . . .	9
2.4.1	Slot 3 . . . . .	9
2.4.2	Slot 4 . . . . .	10
2.4.3	Slot 5 . . . . .	11
2.4.4	Slot 6 . . . . .	12
2.4.5	Slot 7 . . . . .	13
2.5	FID Slots . . . . .	14
2.5.1	Slot 0 . . . . .	14
2.5.2	Slot 1 . . . . .	15
2.5.3	Slot 2 . . . . .	16
<b>A</b>	<b>Summary</b>	<b>17</b>
A.1	Status . . . . .	17
A.2	Comments . . . . .	17

# 1 Front

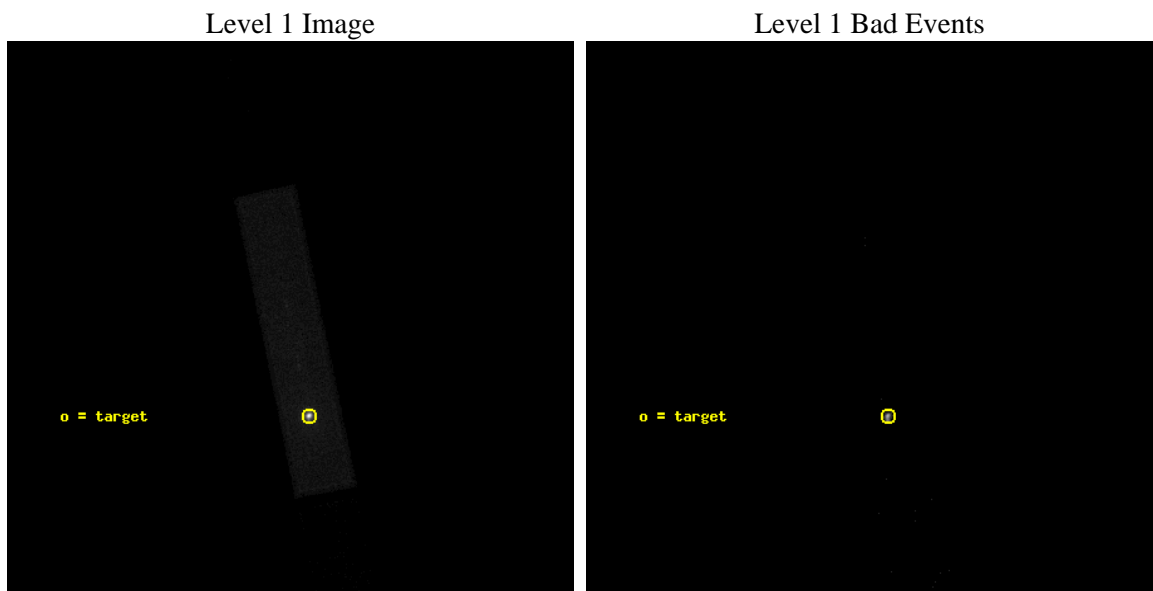
seq_num	290550	Sequence number
obs_id	6457	Observation id
title	AO7 Measurements of the optical/UV Transmission of the HRC and ACIS Filters.	Proposal title
observer	Dr. CXC Calibration	Principal investigator
object	Vega	Source name
ra_targ	279.235	Observer's specified target RA [deg]
dec_targ	38.783778	Observer's specified target Dec [deg]
ra_nom	279.28049795343	Nominal RA [deg]
dec_nom	38.951672926671	Nominal Dec [deg]
roll_nom	78.265157970858	Nominal Roll [deg]
revision	3	Processing version of data
ontime	2053.3313454688	[s]
livetime	1647.153032348	Ontime multiplied by DTCOR
l2events	358607	Number of level 2 events



## 2 OBI

### 2.1 OBI

#### 2.1.1 Images



### 2.1.2 Parameters

obi_num	0	Obi number	sched_exp_time	1900.000000	[s] Scheduled observation exposure time
ascdsver	8.4.5	Processing system revision	ontime	2053.3313454688	[s]
caldbver	4.5.1.1	&#160	l1events	434027	Number of level 1 events
date	2012-08-11T03:25:04	Date and time of file creation			
revision	3	Processing version of data			

### 2.1.3 Events

Level 1 Events

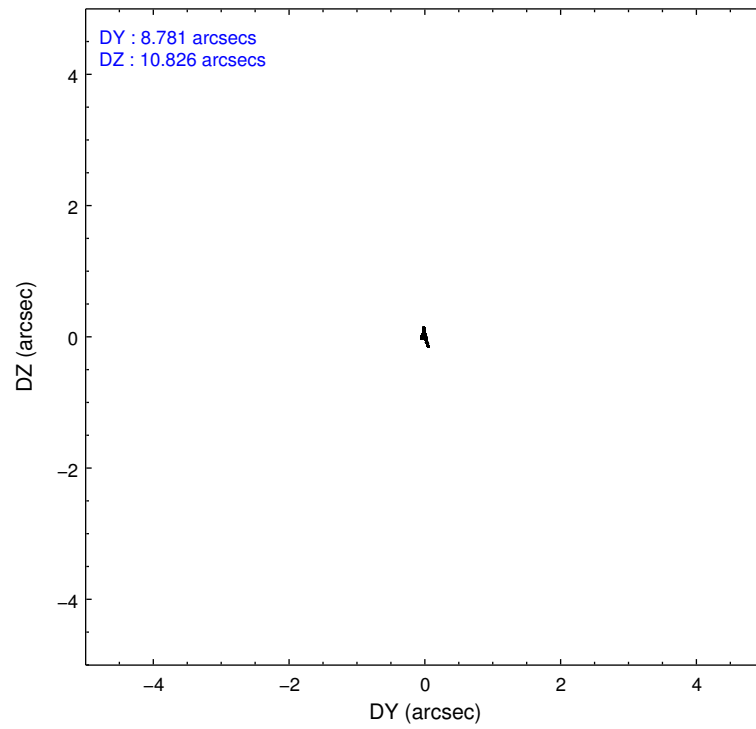
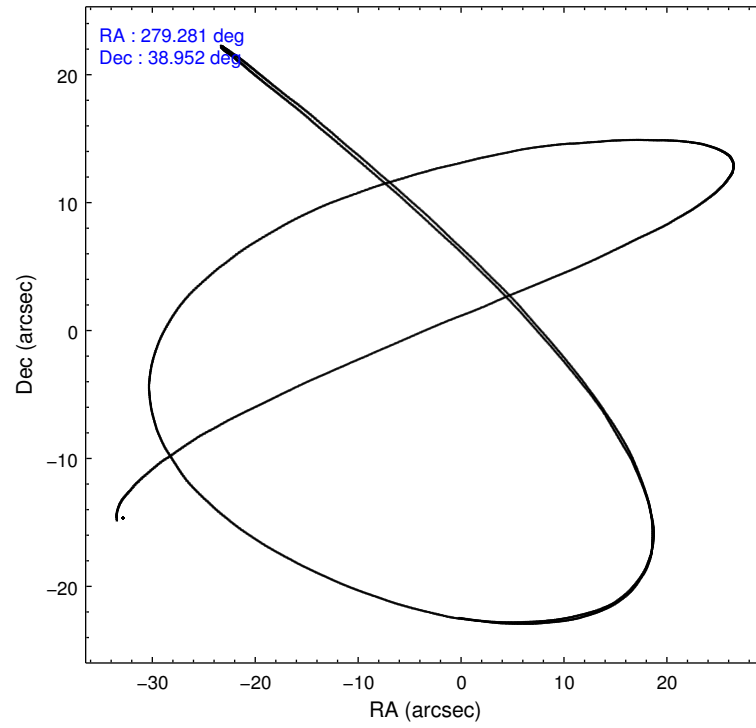
	<b>segment 1</b>	<b>segment 2</b>	<b>segment 3</b>
level 1 events	5562	427291	1174
rejected events	5525	48697	1150
rejected %	99%	11%	97%

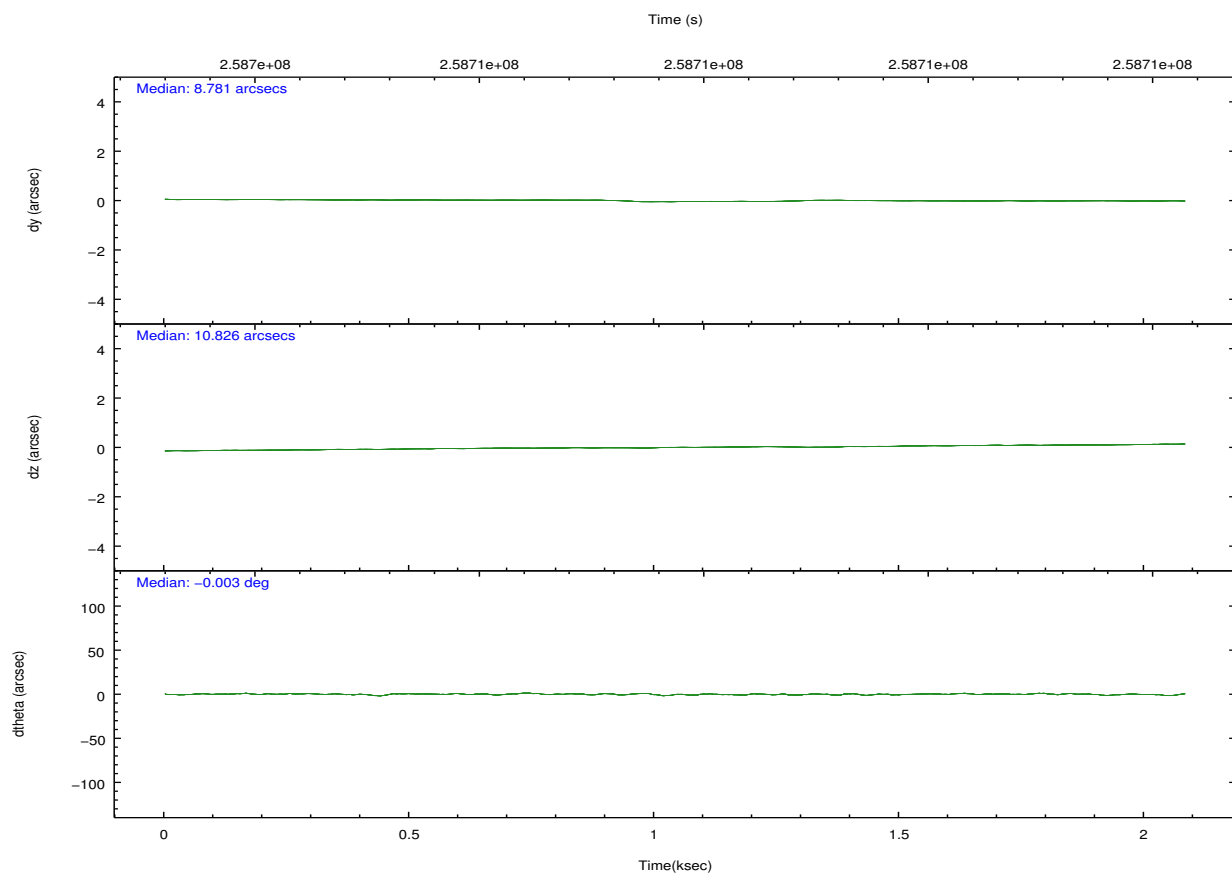
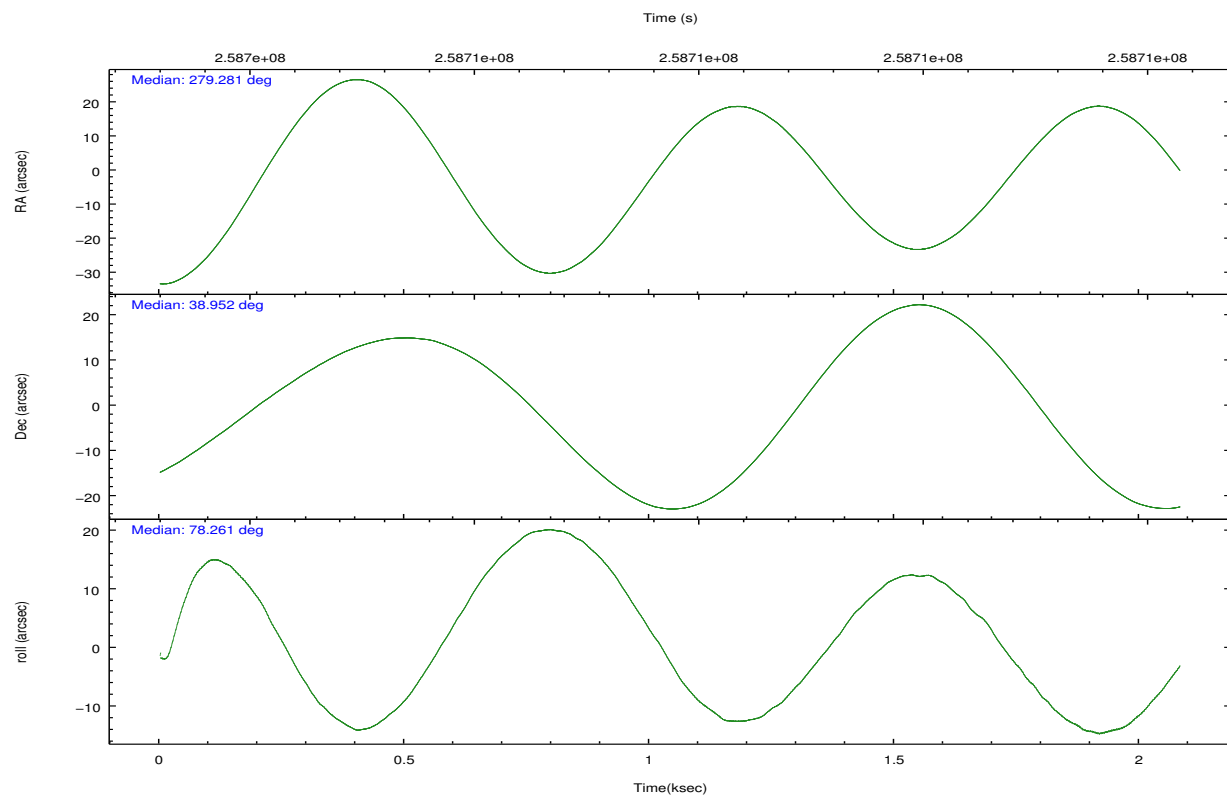
## 2.2 Compared Parameters

Parameter	Planned	Actual
Instrument	HRC	HRC
Detector	HRC-S	HRC-S
Grating	NONE	NONE
Data mode	OBSERVING	OBSERVING
Observation mode	POINTING	POINTING
[deg] Pointing RA	279.293356	279.2804979534262
[deg] Pointing Dec	38.924807	38.95167292667131
[deg] Pointing Roll	78.189762	78.2651579708578
[s] Window start time (MET)	255139265.184000	255139265.184000
[s] Window stop time (MET)	260150465.184000	260150465.184000
[mm] SIM focus pos	-1.533336	-1.526339935833849
[mm] SIM defocus	7.710433287538843e-07	0.006996703570447904
[mm] SIM translation stage pos	250.455976	250.466033080201
[mm] SIM translation stage offset	0	-0.01005468664627074
[s] Observation start time (MET)	258705081.184000	258704704.88075
Observation start date	2006-03-14T06:30:16	2006-03-14T06:25:04
[s] Observation end time (MET)	258706981.184000	258707115.68086
Observation end date	2006-03-14T07:01:56	2006-03-14T07:05:15

Parameter	Planned	Actual
Obspar format version number	7	7
Obspar file type	PREDICTED	ACTUAL
Obspar update status	NONE	UPDATED

## 2.3 Aspect





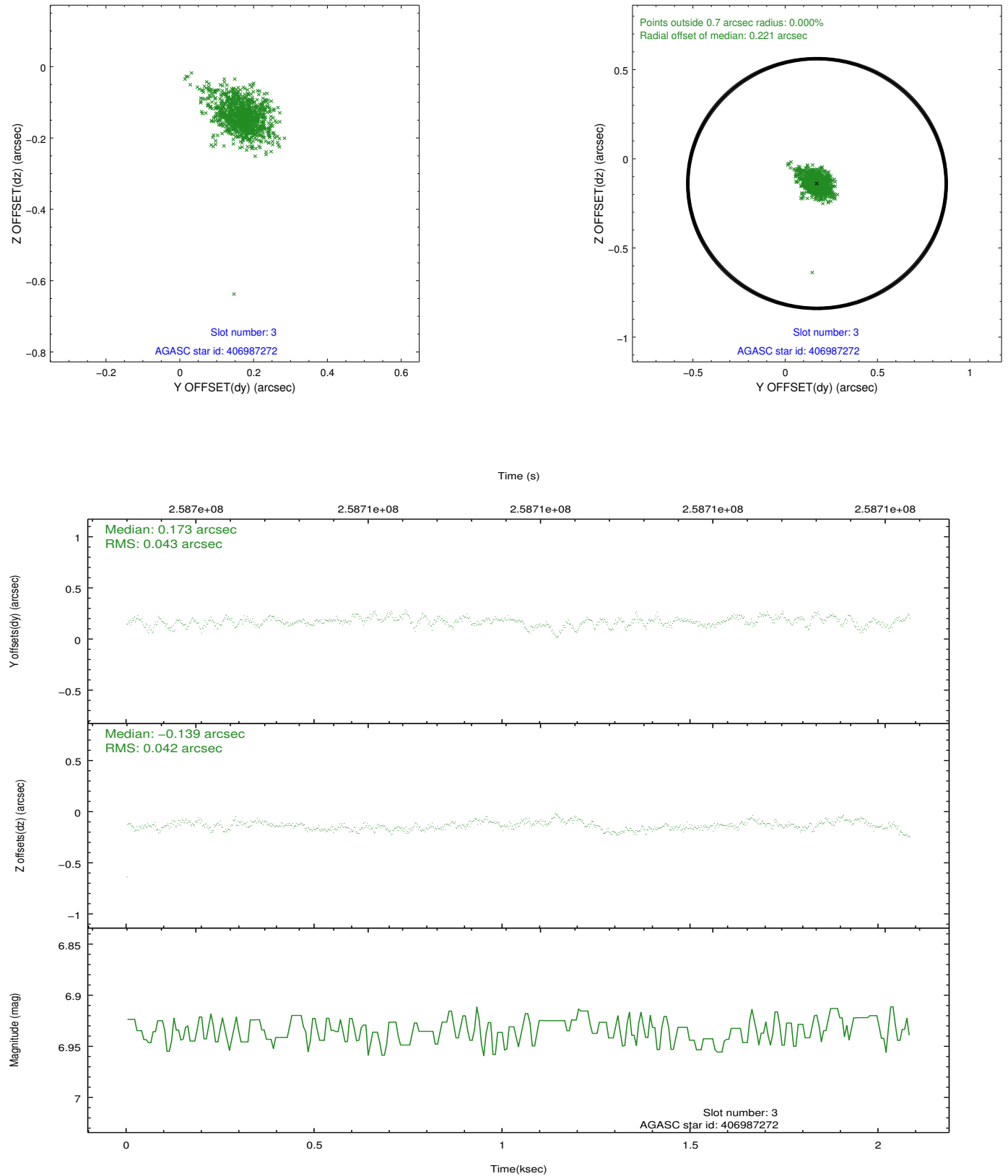
Slot Statistics

slot	status	id	mag	n_pts	med_dy	med_dz	dr1	dr2	ra	dec	mean_y	mean_z
0	FID	HRC-S-1	7.03	508	0.142	-0.188	0.008	0.013	0.000000	0.000000	-1162.96	-459.55
1	FID	HRC-S-2	7.02	508	0.154	-0.116	0.005	0.009	0.000000	0.000000	1234.42	-453.04
2	FID	HRC-S-3	7.03	508	0.093	0.002	0.008	0.014	0.000000	0.000000	-1163.29	569.27
3	GUIDE	406987272	6.93	1017	0.173	-0.139	0.060	0.106	278.536588	38.437504	-2145.79	1732.70
4	GUIDE	406990192	9.00	1017	0.081	-0.058	0.088	0.142	278.510952	38.533654	-1823.06	1873.09
5	GUIDE	407510432	8.15	1013	0.009	-0.085	0.068	0.113	278.762778	39.530640	1834.87	1892.46
6	GUIDE	407513096	8.15	1017	-0.275	0.175	0.067	0.111	279.928965	39.436841	2172.90	-1348.03
7	GUIDE	407521232	8.65	1015	0.012	0.111	0.079	0.129	279.628883	39.431715	1980.25	-539.36

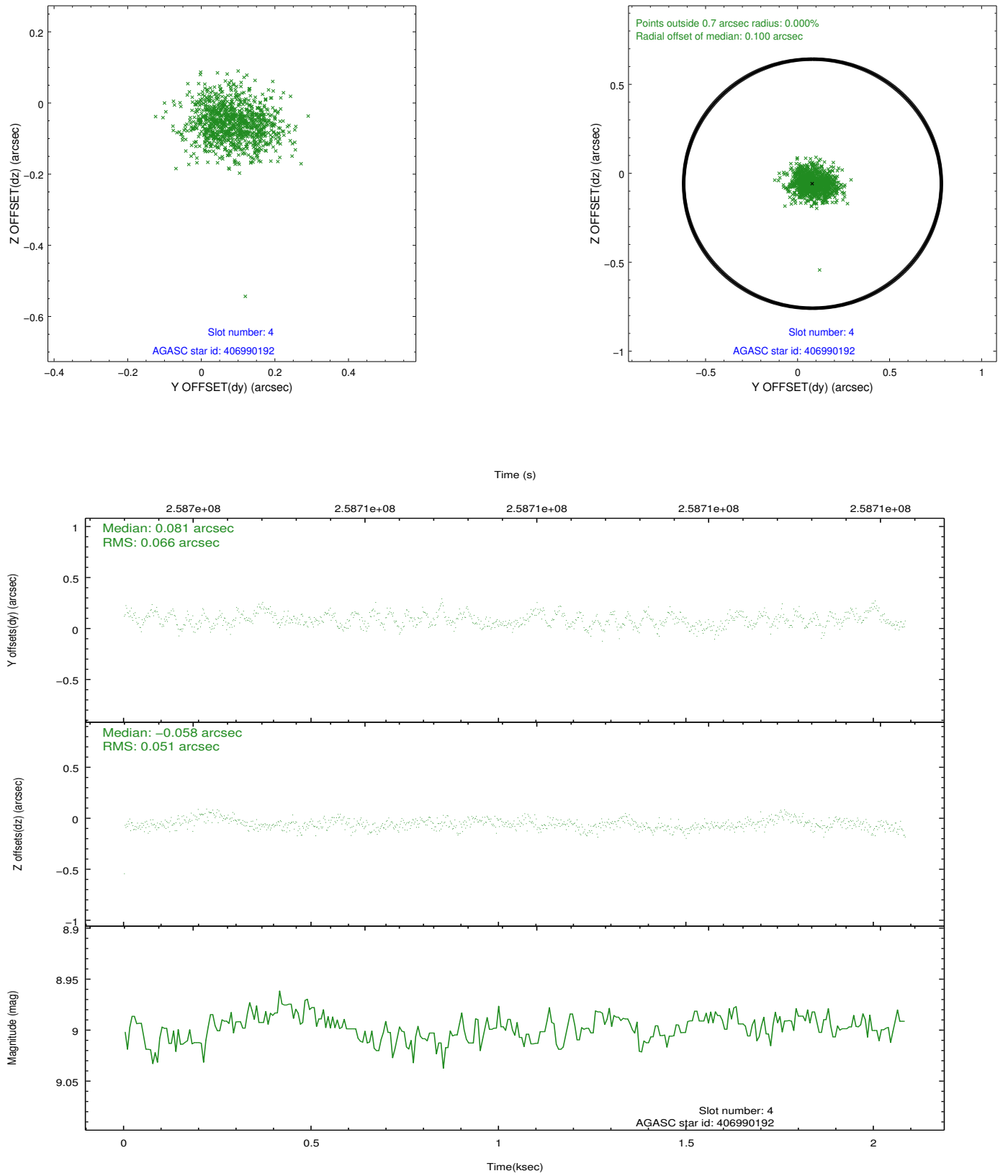


## 2.4 Star Slots

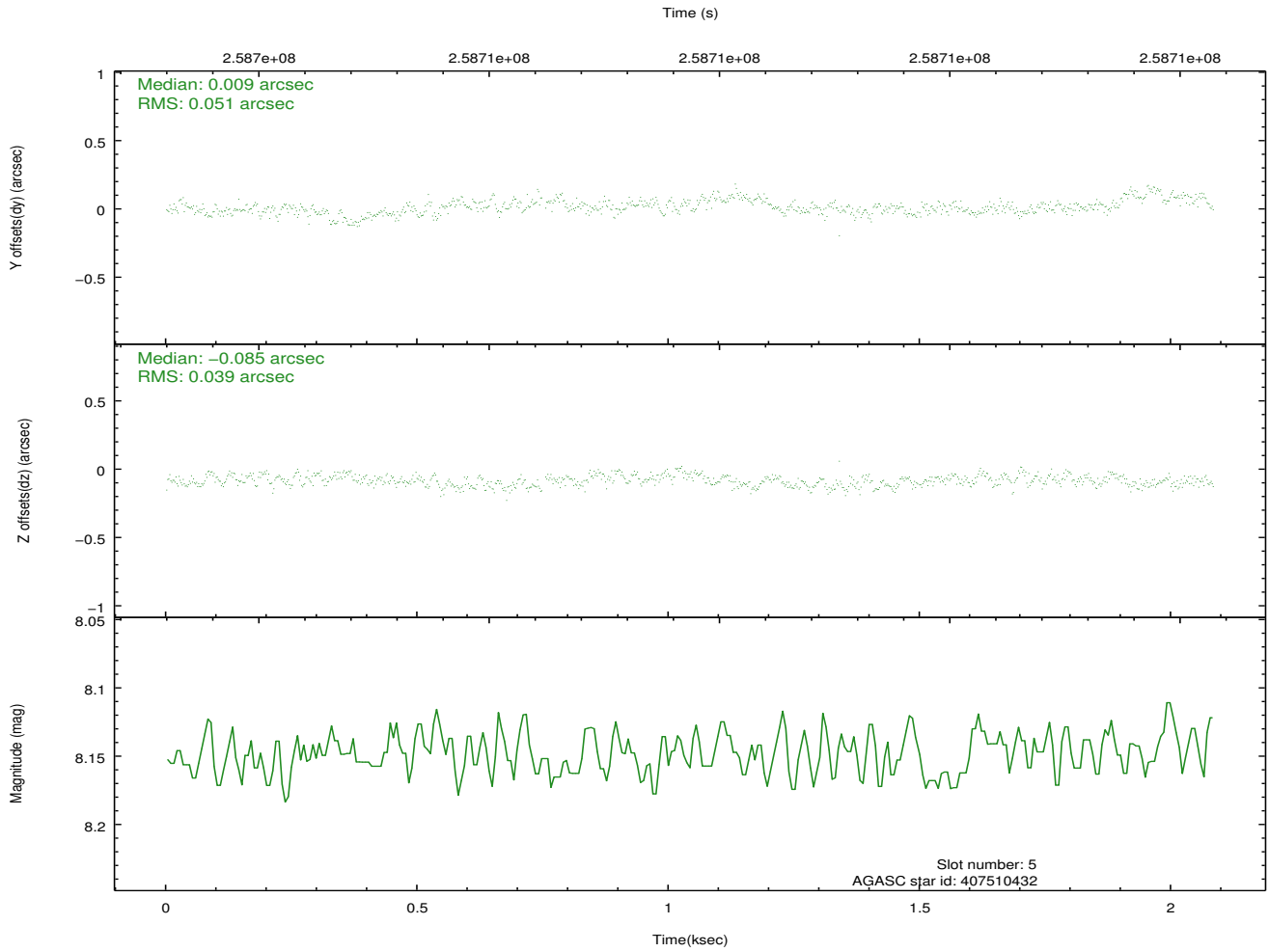
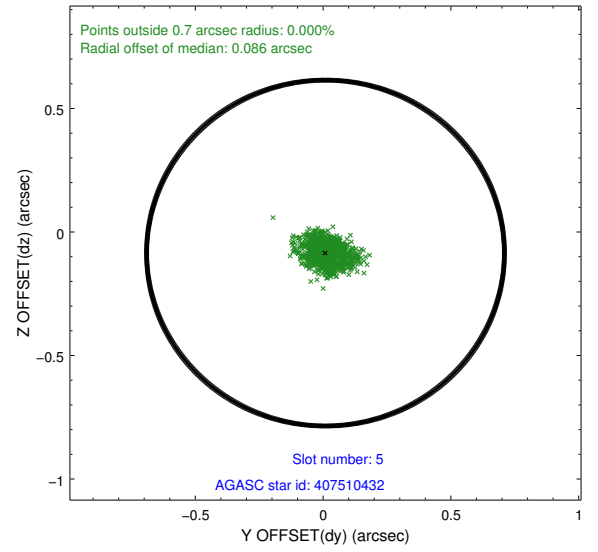
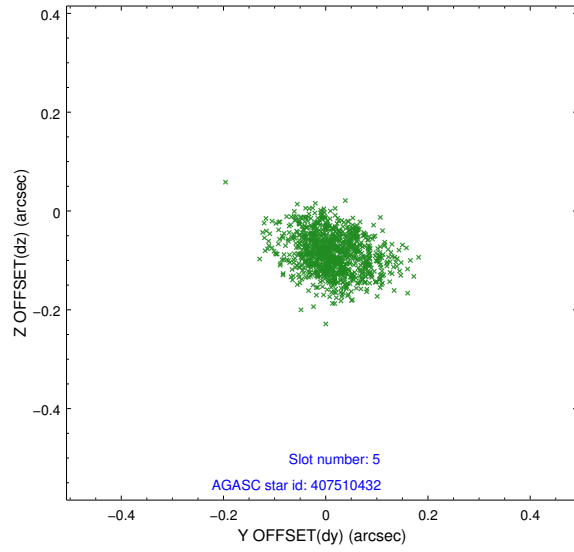
### 2.4.1 Slot 3



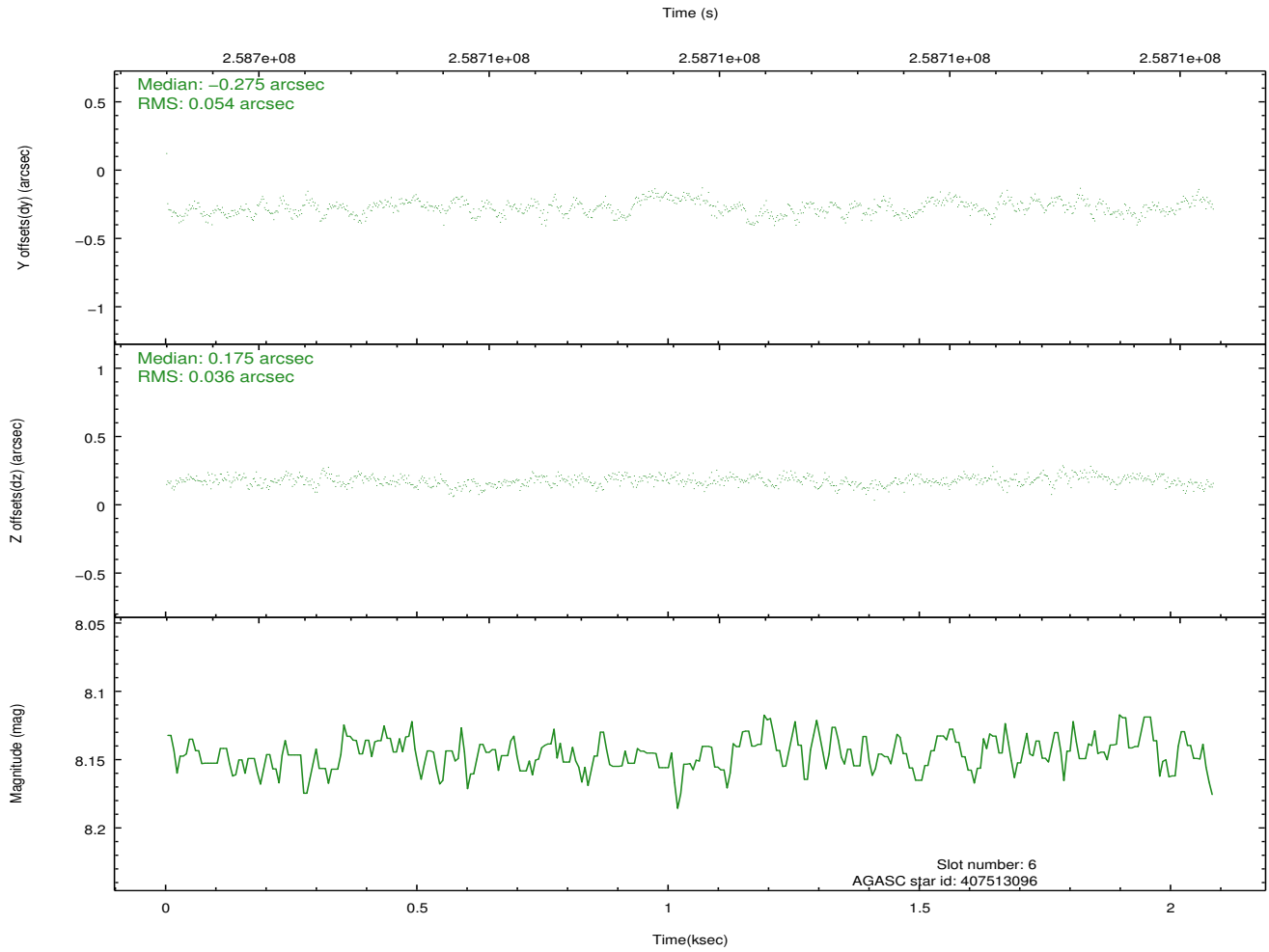
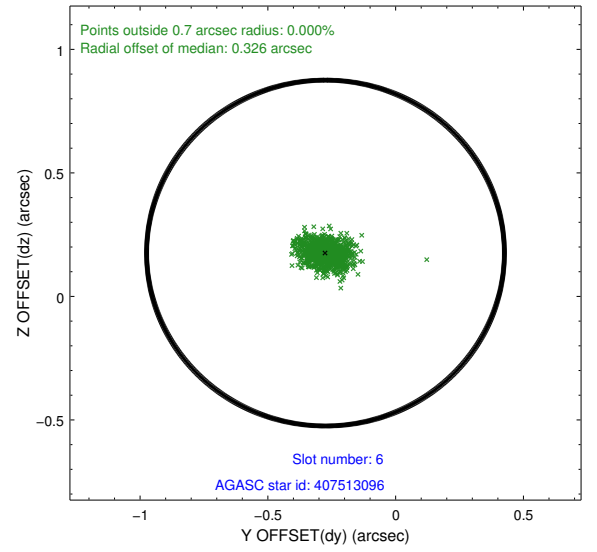
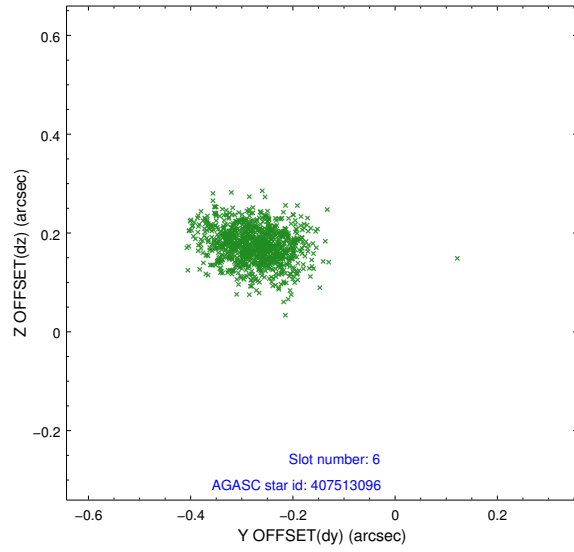
## 2.4.2 Slot 4



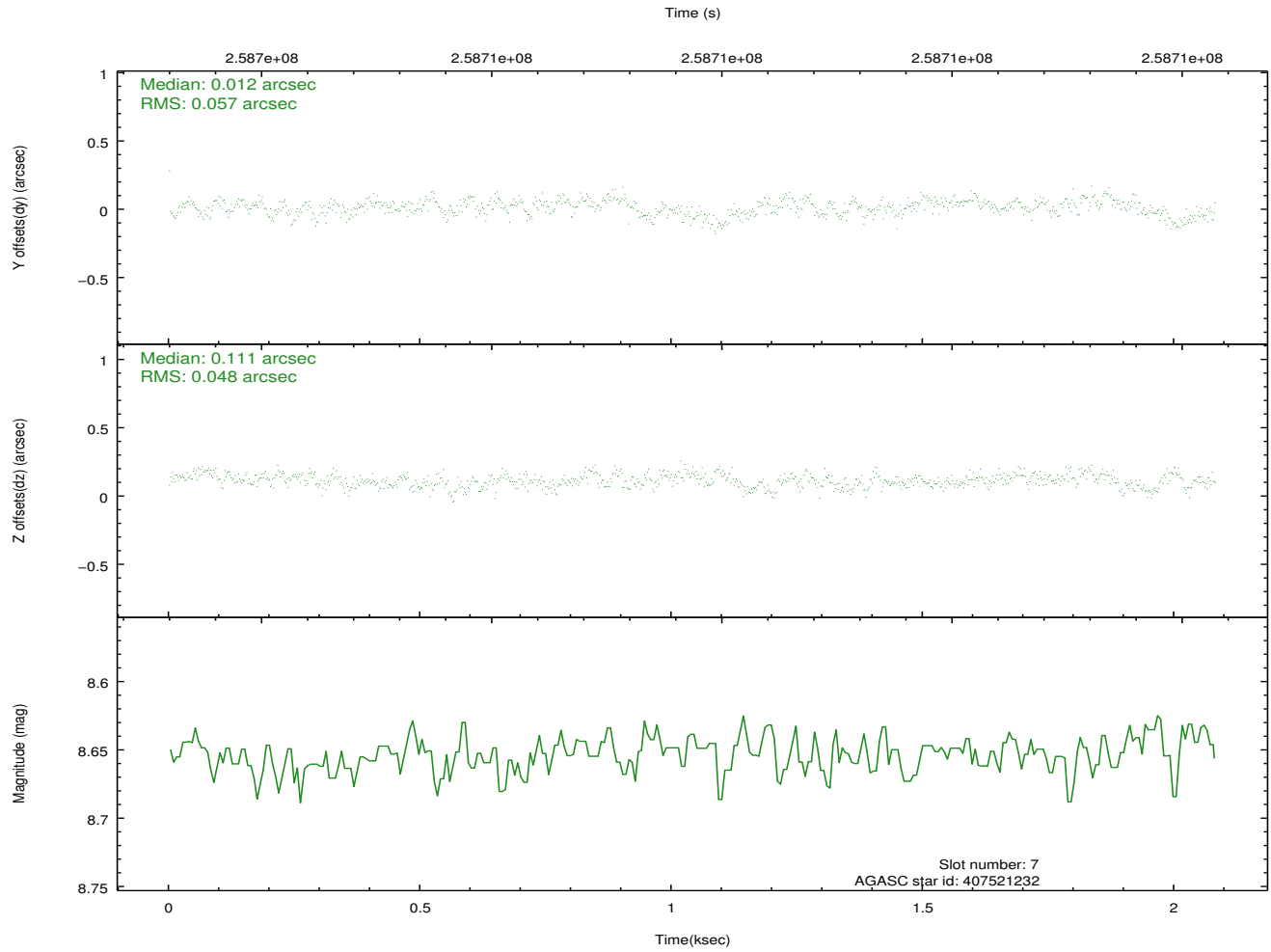
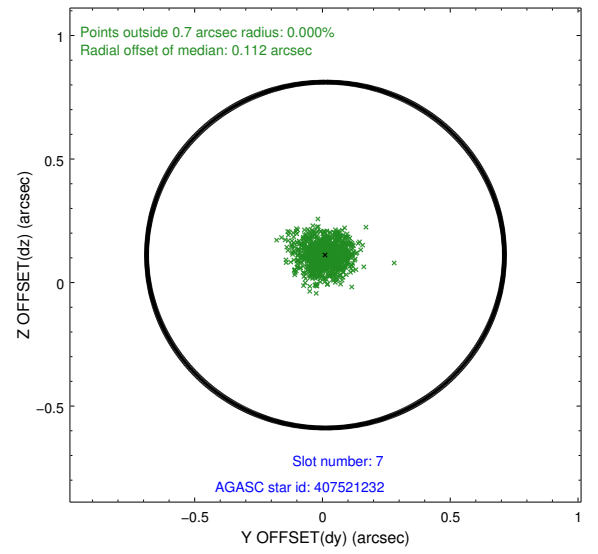
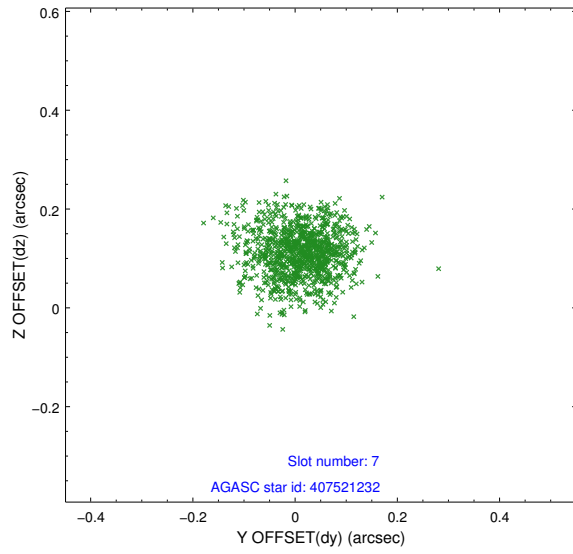
### 2.4.3 Slot 5



## 2.4.4 Slot 6

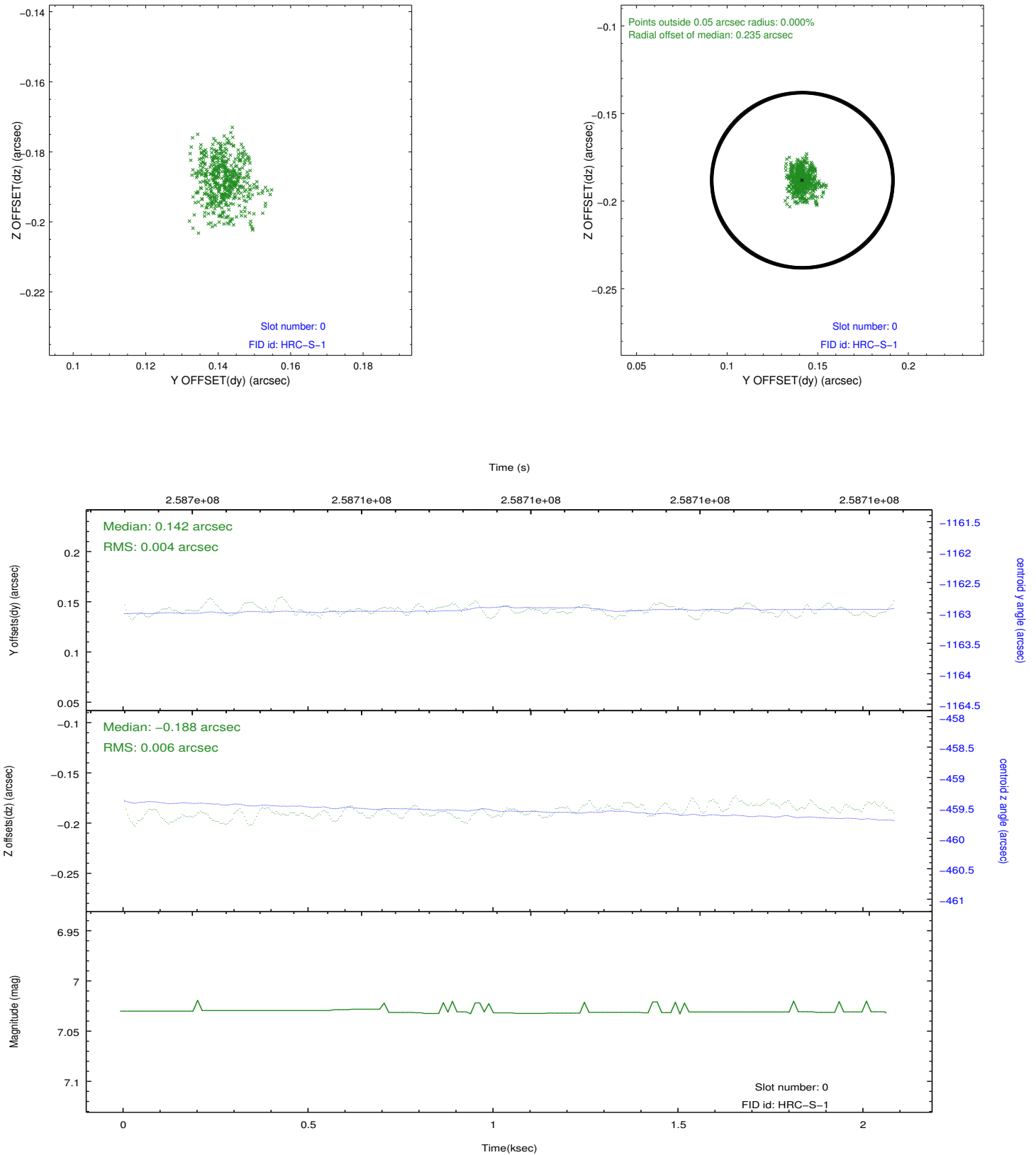


## 2.4.5 Slot 7

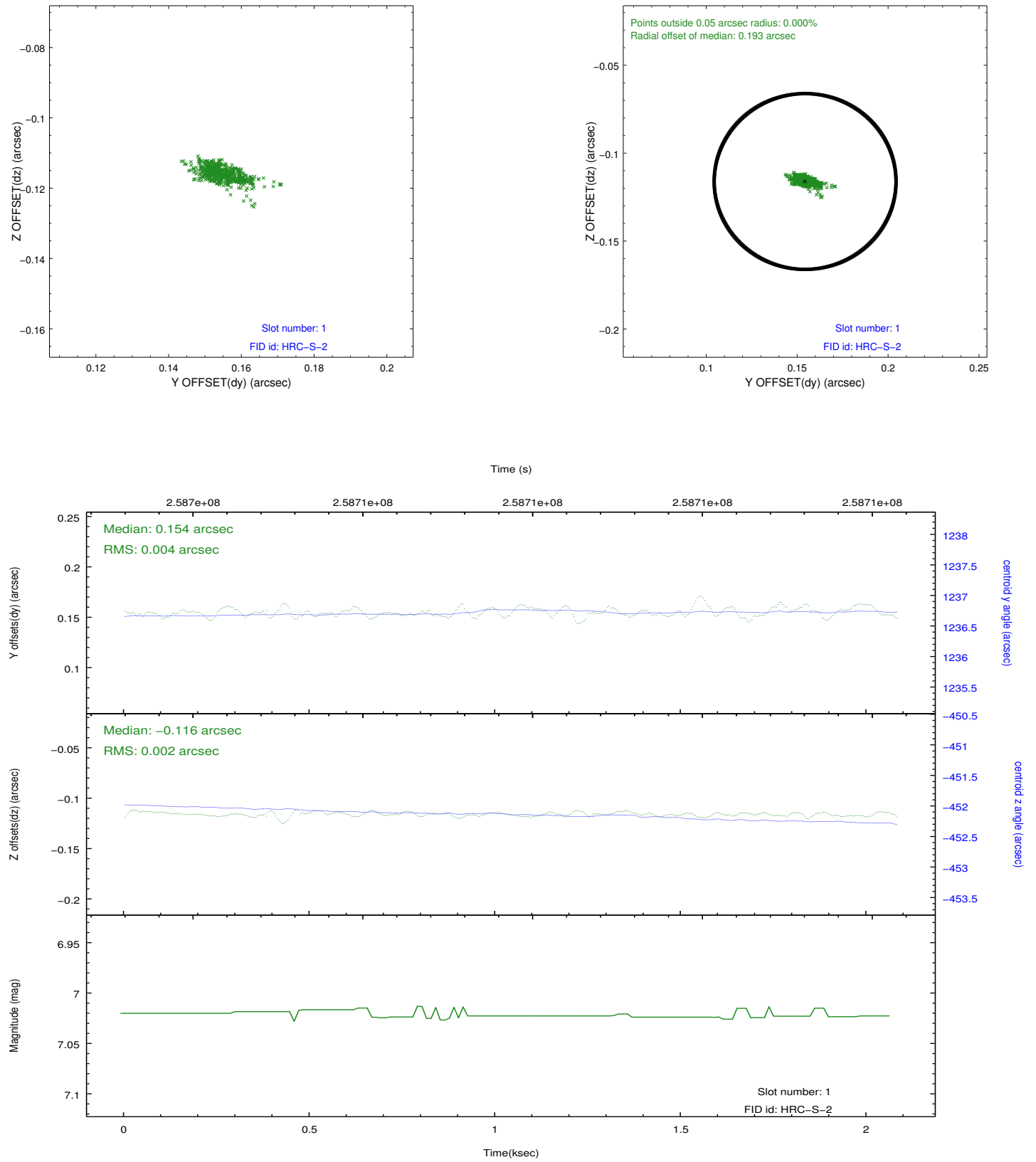


## 2.5 FID Slots

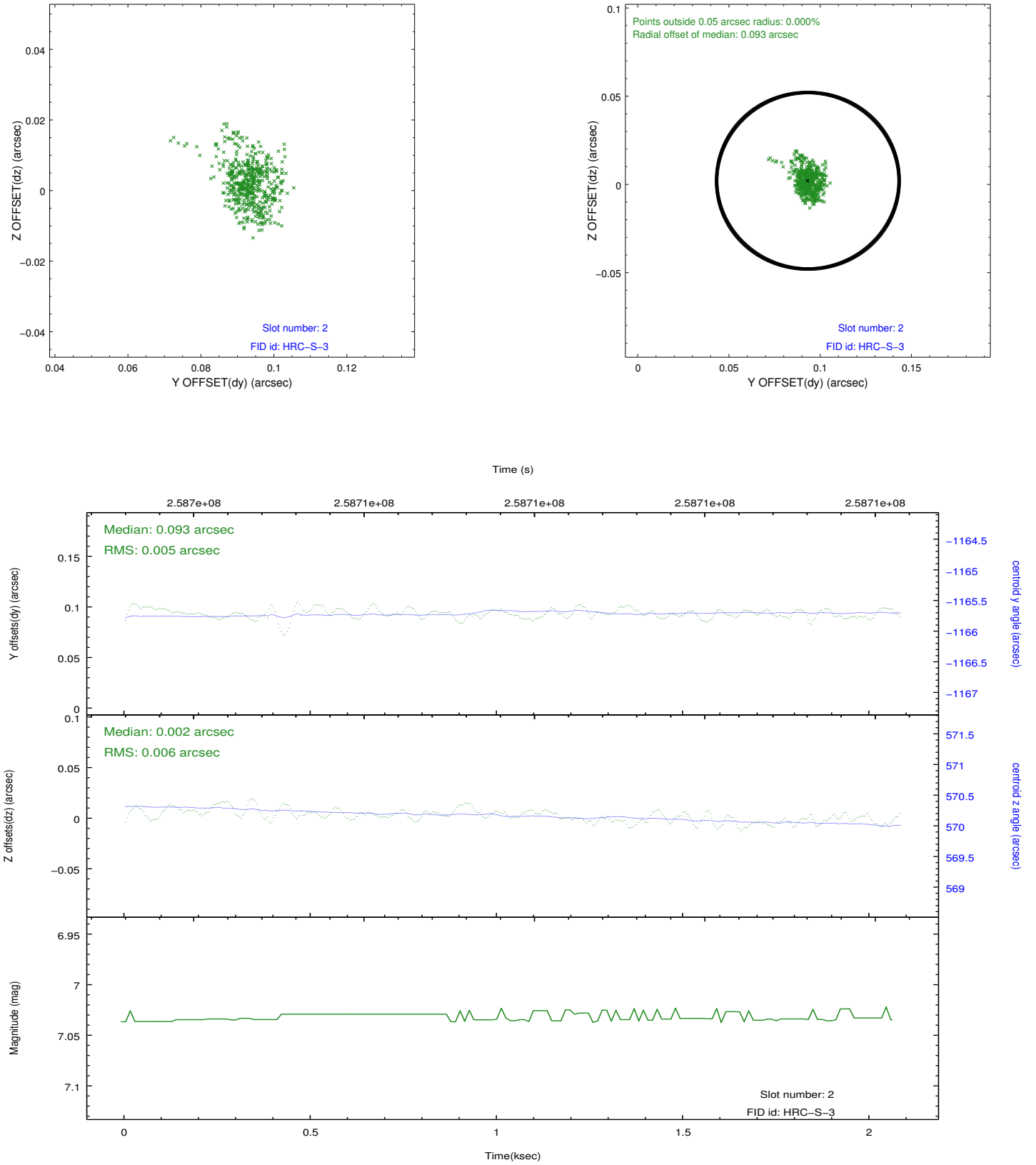
### 2.5.1 Slot 0



## 2.5.2 Slot 1



### 2.5.3 Slot 2





## A Summary

### A.1 Status

V&V Scientist	Jen Lauer
V&V Date (YYYY-MM-DD)	2012.08.12
V&V Edition	1
V&V Disposition and Status	OK
V&V Charge Time	2.05333134

### A.2 Comments

Window constraint satisfied.