

V&V Reference Report

L2 ASCDS Version : 8.5.1.1

Observation 6257 - L2 Version 3
Chandra X-Ray Center

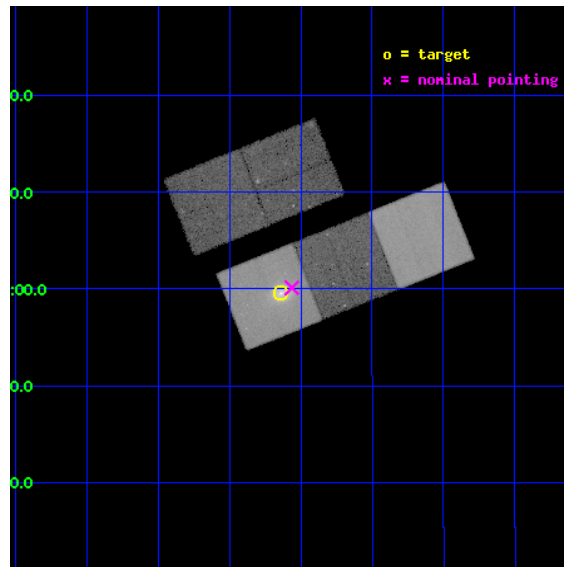
L2 Processing Date : Dec 24 2012

Contents

1	Front	2
2	OBI	3
2.1	OBI	3
2.1.1	Images	3
2.1.2	Bias	3
2.1.3	Parameters	4
2.1.4	Events	4
2.2	Compared Parameters	5
2.3	Aspect	6
2.4	Star Slots	9
2.4.1	Slot 3	9
2.4.2	Slot 4	10
2.4.3	Slot 5	11
2.4.4	Slot 6	12
2.4.5	Slot 7	13
2.5	FID Slots	14
2.5.1	Slot 0	14
2.5.2	Slot 1	15
2.5.3	Slot 2	16
A	Summary	17
A.1	Status	17
A.2	Comments	17

1 Front

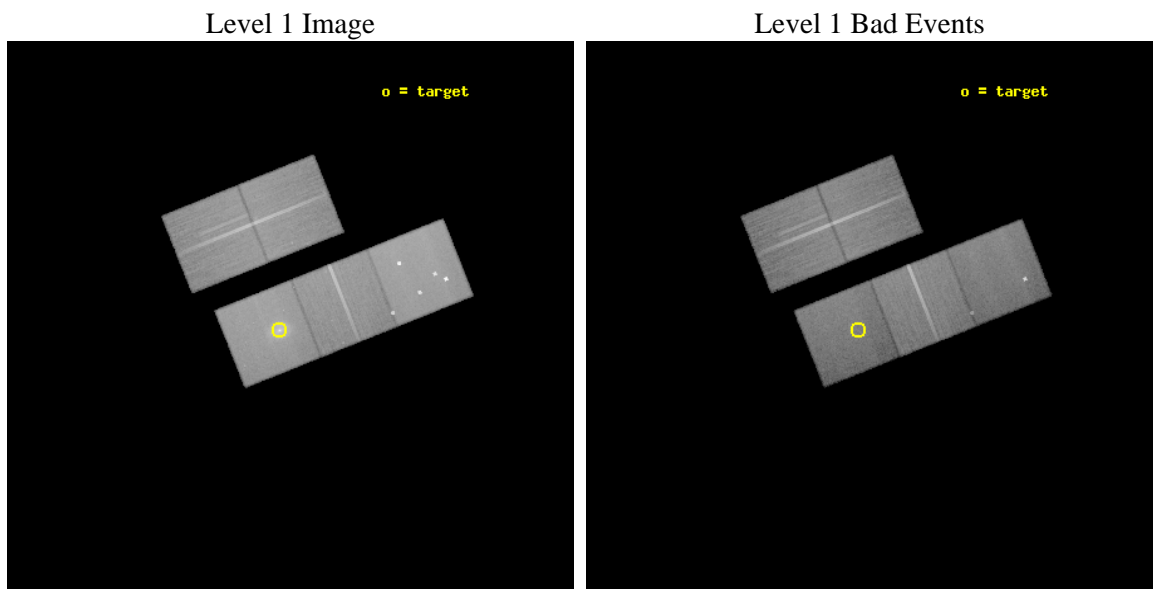
seq_num	800509	Sequence number
obs_id	6257	Observation id
title	The Outburst in Hercules A	Proposal title
observer	Dr Paul Nulsen	Principal investigator
object	Hercules A	Source name
dtcycle	0	
cycle	P	events from which exps? Prim/Second/Both
ra_targ	252.784167	Observer's specified target RA [deg]
dec_targ	4.992722	Observer's specified target Dec [deg]
ra_nom	252.76550935223	Nominal RA [deg]
dec_nom	5.0019991465677	Nominal Dec [deg]
roll_nom	158.23176024229	Nominal Roll [deg]
revision	3	Processing version of data
ontime	50172.998022318	Sum of GTIs [s]
livetime	49517.450866333	Livetime [s]
ontime2	50166.551961392	Sum of GTIs [s]
ontime3	50172.874902308	Sum of GTIs [s]
ontime5	50172.956982315	Sum of GTIs [s]
ontime6	50172.915942311	Sum of GTIs [s]
ontime7	50172.998022318	Sum of GTIs [s]
l2events	491329	Number of level 2 events



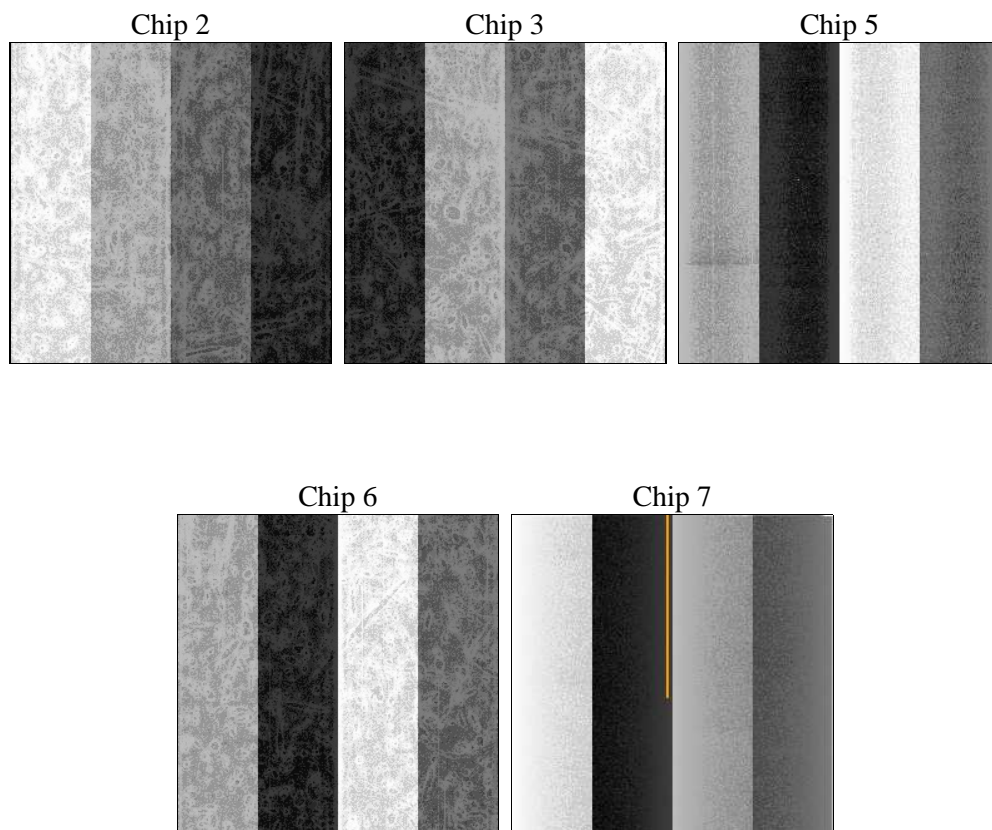
2 OBI

2.1 OBI

2.1.1 Images



2.1.2 Bias



2.1.3 Parameters

obi_num	0	Obi number	sched_exp_time	50000.000000	[s] Scheduled observation exposure time
ascdsver	8.5.1.1	Processing system revision	ontime	50172.998022318	Sum of GTIs [s]
caldbver	4.5.5	 	ontime2	50166.551961392	Sum of GTIs [s]
date	2012-12-23T19:27:26	Date and time of file creation	ontime3	50172.874902308	Sum of GTIs [s]
revision	3	Processing version of data	ontime5	50172.956982315	Sum of GTIs [s]
			ontime6	50172.915942311	Sum of GTIs [s]
			ontime7	50172.998022318	Sum of GTIs [s]
			l1events	1824859	Number of level 1 events

2.1.4 Events

	ccd 2	ccd 3	ccd 5	ccd 6	ccd 7		ccd 2	ccd 3	ccd 5	ccd 6	ccd 7
level 1 events	321010	308479	471389	322711	401270	grade 0 events	12806	11544	47217	14798	29974
rejected events	288618	278042	222303	286279	192627		3%	3%	10%	4%	7%
rejected %	89%	90%	47%	88%	48%	grade 1 events	166	148	6137	163	285
							0%	0%	1%	0%	0%
						grade 2 events	7120	6326	71209	7264	45605
							2%	2%	15%	2%	11%
						grade 3 events	3423	3372	9852	3660	20886
							1%	1%	2%	1%	5%
						grade 4 events	3458	3288	9978	3704	20591
							1%	1%	2%	1%	5%
						grade 5 events	10325	12379	34506	12768	37500
							3%	4%	7%	3%	9%
						grade 6 events	5592	5908	110883	7009	91595
							1%	1%	23%	2%	22%
						grade 7 events	278120	265514	181607	273345	154834
							86%	86%	38%	84%	38%

2.2 Compared Parameters

Parameter	Planned	Actual	Parameter	Planned	Actual
Instrument	ACIS	ACIS	Obspar format version number	7	7
Detector	ACIS-23567	ACIS-23567	Obspar file type	PREDICTED	ACTUAL
Grating	NONE	NONE	Obspar update status	NONE	UPDATED
Data mode	VFAINT	VFAINT	Number of optional ACIS chips dropped	0	0
Observation mode	POINTING	POINTING	On-chip summing requested	N	N
[deg] Pointing RA	252.792522	252.7655093522313	Subarray requested	NONE	NONE
[deg] Pointing Dec	5.006261	5.001999146567727	Alternating exposures requested	N	N
[deg] Pointing Roll	158.072773	158.2317602422877	[s] Primary exposure time	0.000000	3.1
[mm] SIM focus pos	-0.684267	-0.6828225247311905			
[mm] SIM defocus	0	0.001444936568705701			
[mm] SIM translation stage pos	-190.132523	-190.1400660498719			
[mm] SIM translation stage offset	0	0.00754346686406393			
[s] Observation start time (MET)	233382369.184000	233381374.02673			
Observation start date	2005-05-25T04:25:05	2005-05-25T04:09:34			
[s] Observation end time (MET)	233432369.184000	233433865.81662			
Observation end date	2005-05-25T18:18:25	2005-05-25T18:44:25			
Read mode	TIMED	TIMED			

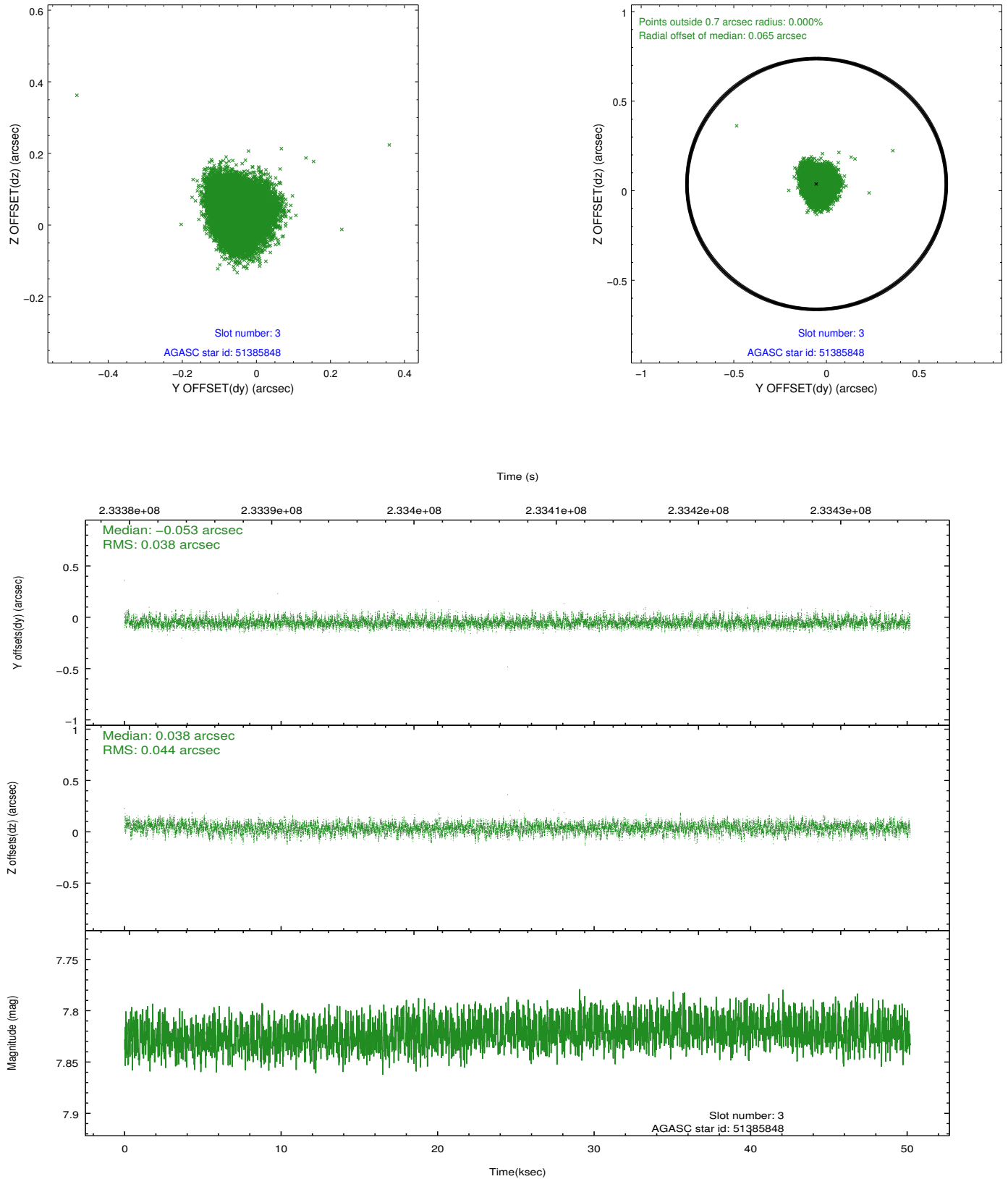
2.3 Aspect

Slot Statistics

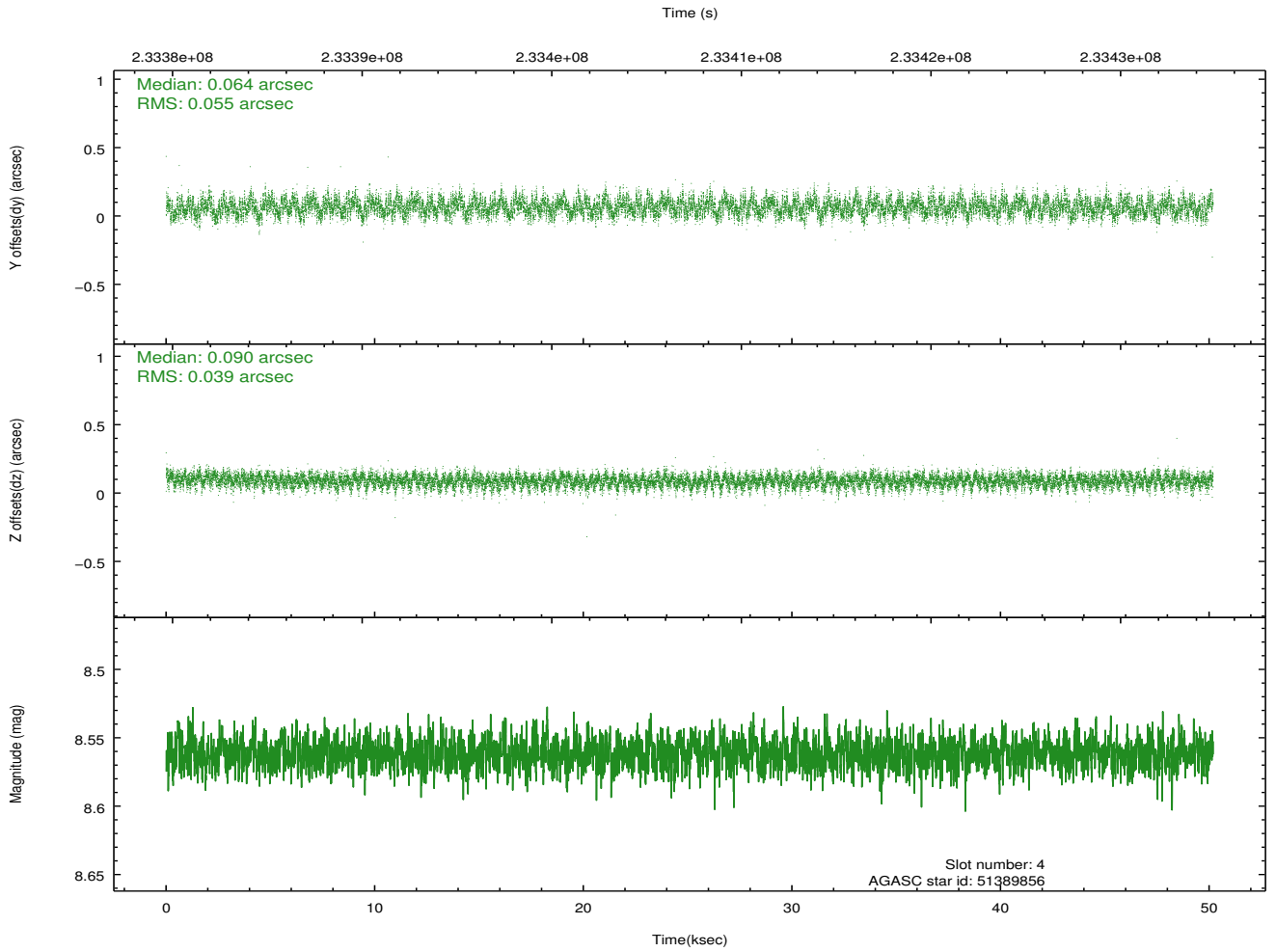
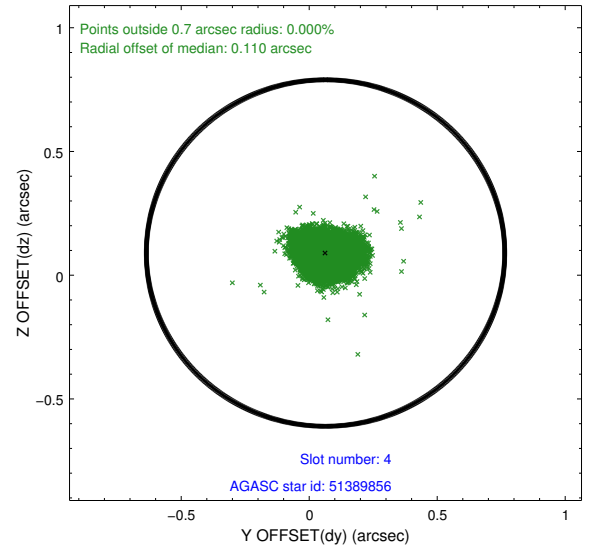
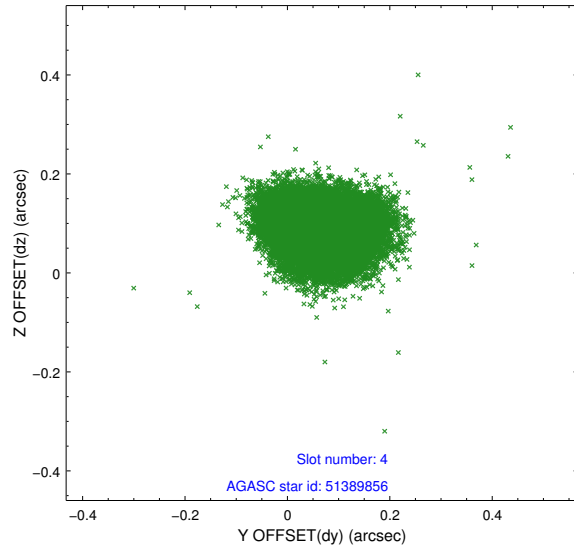
slot	status	id	mag	n_pts	med_dy	med_dz	dr1	dr2	ra	dec	mean_y	mean_z
0	FID	ACIS-S-2	7.10	12240	-0.058	-0.041	0.008	0.022	0.000000	0.000000	-759.69	-1730.84
1	FID	ACIS-S-4	7.21	12240	0.106	0.039	0.008	0.017	0.000000	0.000000	2153.73	177.78
2	FID	ACIS-S-5	7.23	12242	-0.080	0.011	0.009	0.015	0.000000	0.000000	-1812.60	171.35
3	GUIDE	51385848	7.82	24399	-0.053	0.038	0.062	0.100	252.745605	5.488999	805.36	-1549.01
4	GUIDE	51389856	8.56	24468	0.064	0.090	0.072	0.115	252.375344	5.365072	1870.07	-639.92
5	GUIDE	51390960	7.67	24478	-0.044	-0.001	0.053	0.084	253.089716	4.810839	-1251.32	254.21
6	GUIDE	51398584	8.23	24478	0.095	-0.064	0.067	0.107	252.688107	4.451511	-398.08	1992.57
7	GUIDE	51399896	8.26	24471	-0.064	-0.061	0.057	0.095	251.967371	4.715817	2356.45	2074.41

2.4 Star Slots

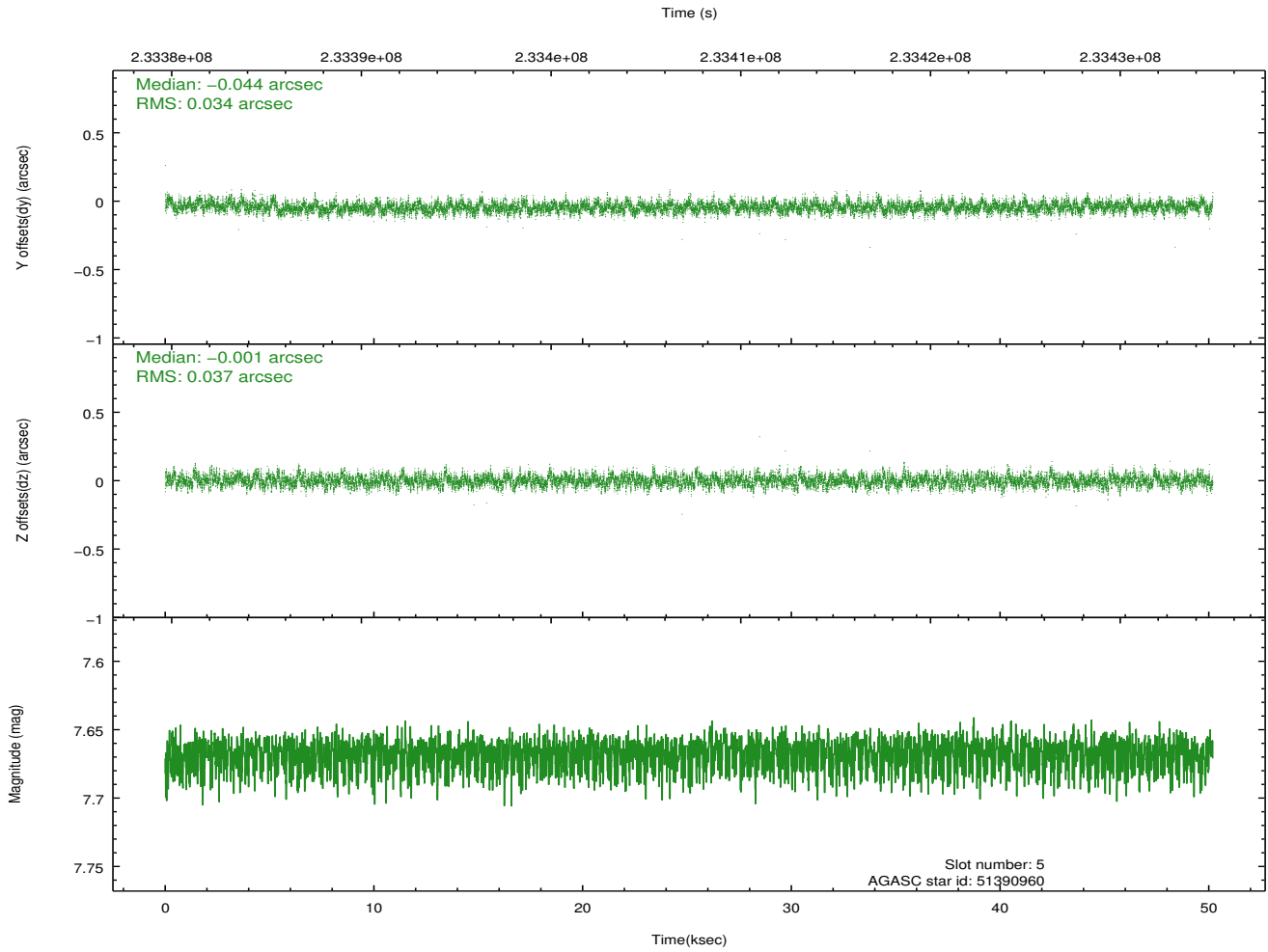
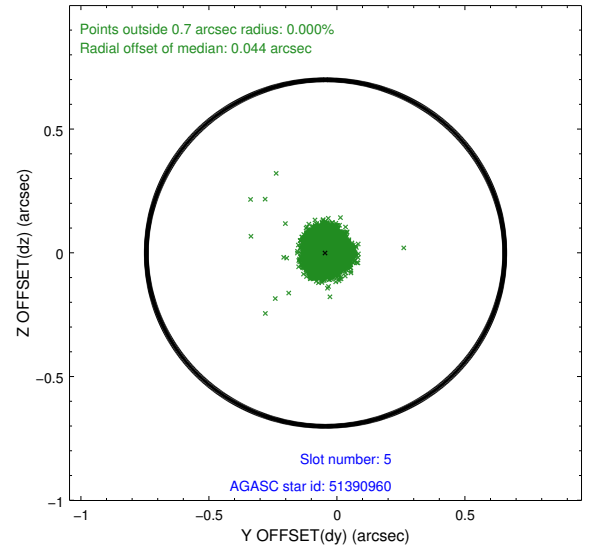
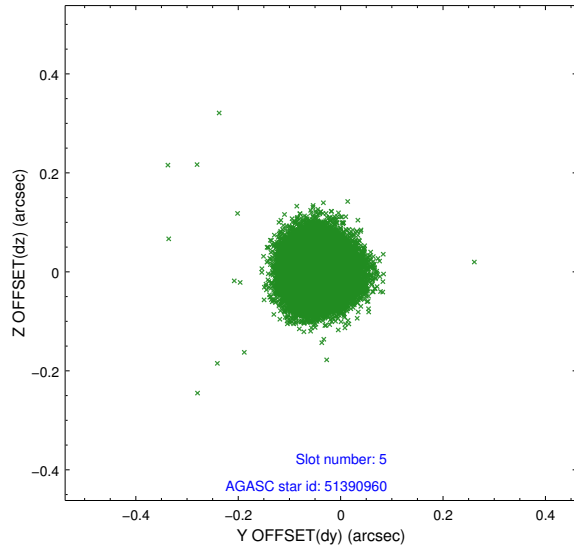
2.4.1 Slot 3



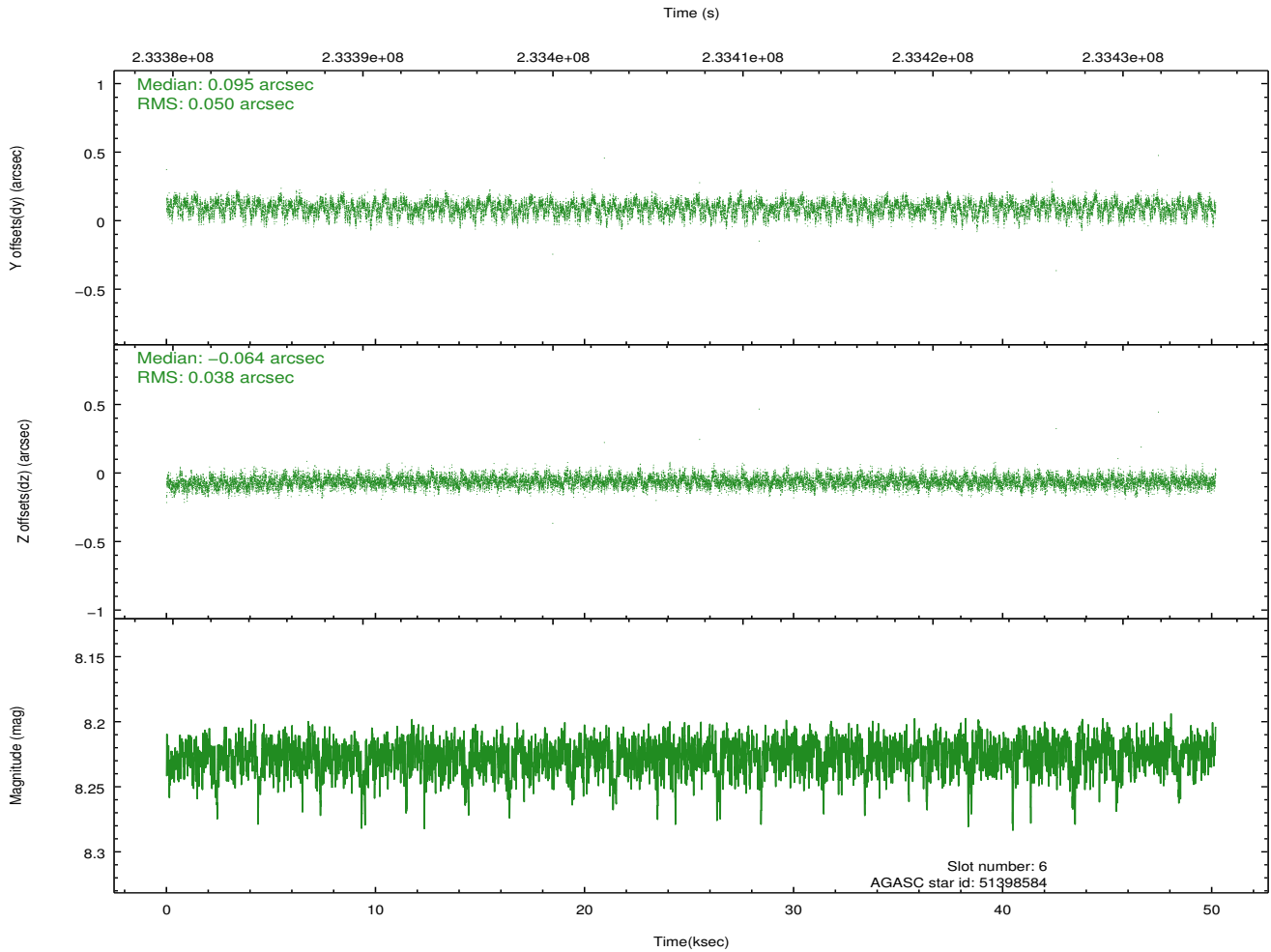
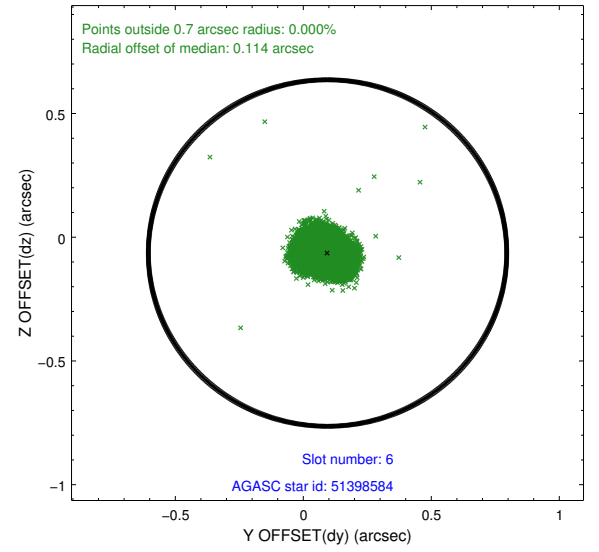
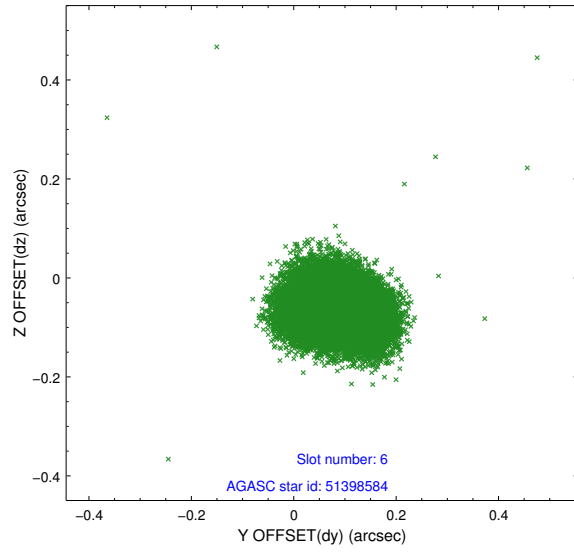
2.4.2 Slot 4



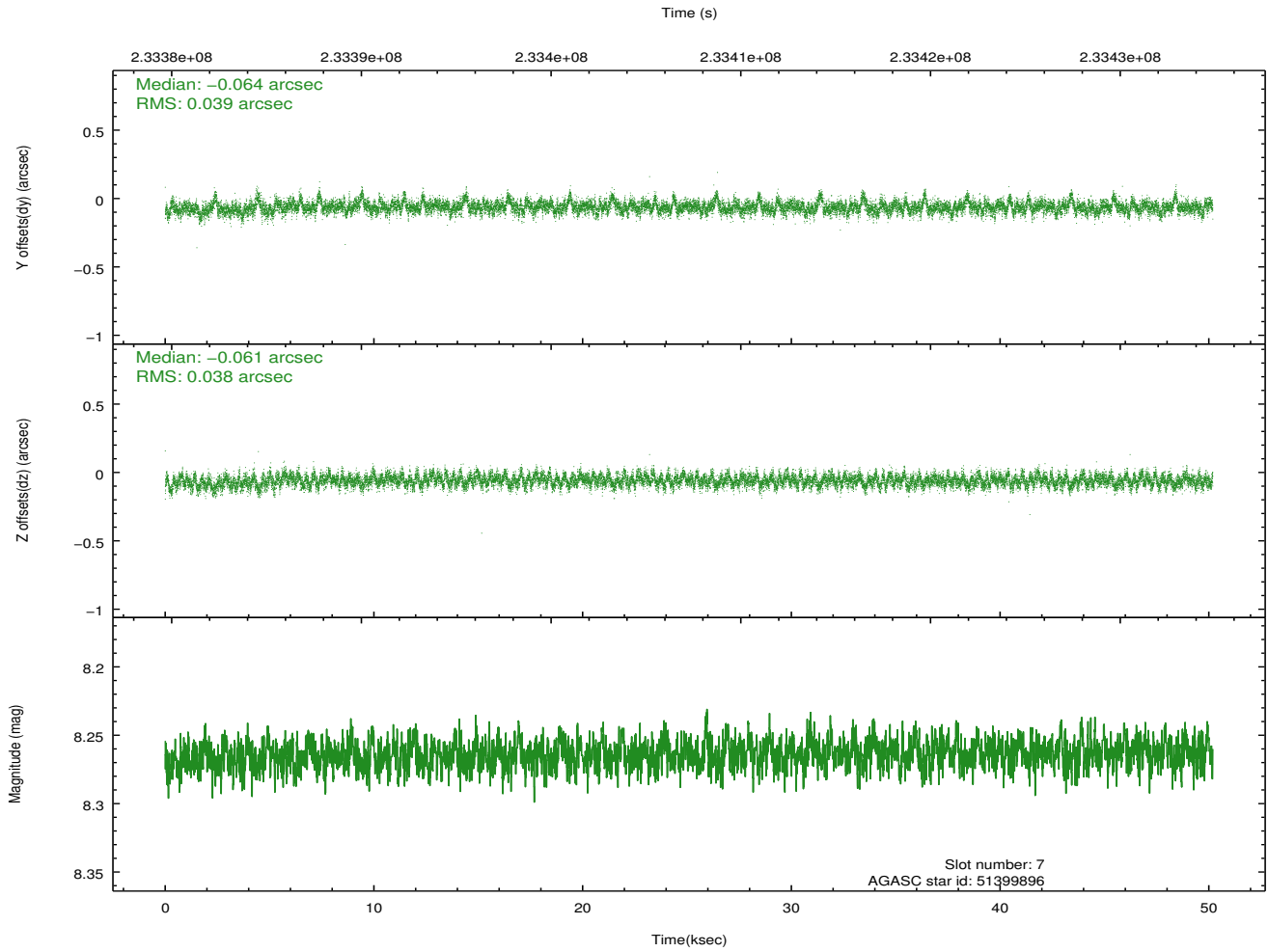
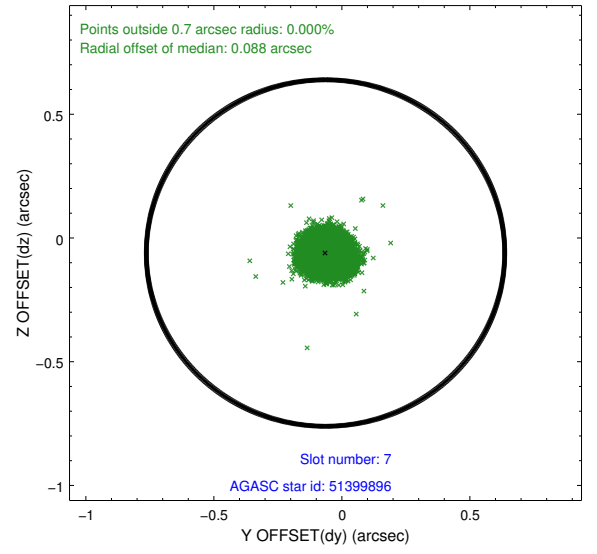
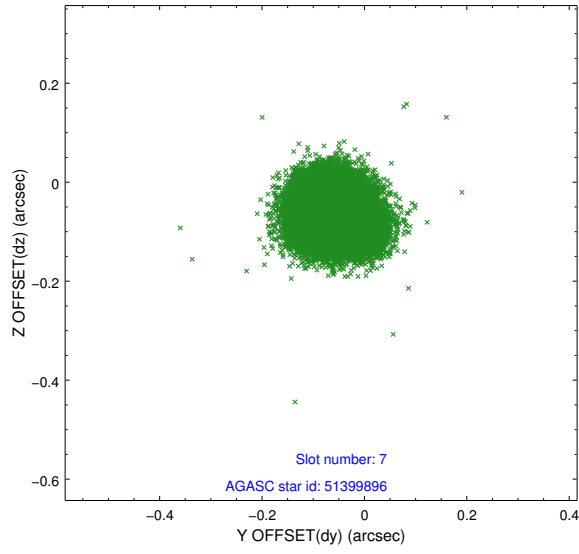
2.4.3 Slot 5



2.4.4 Slot 6

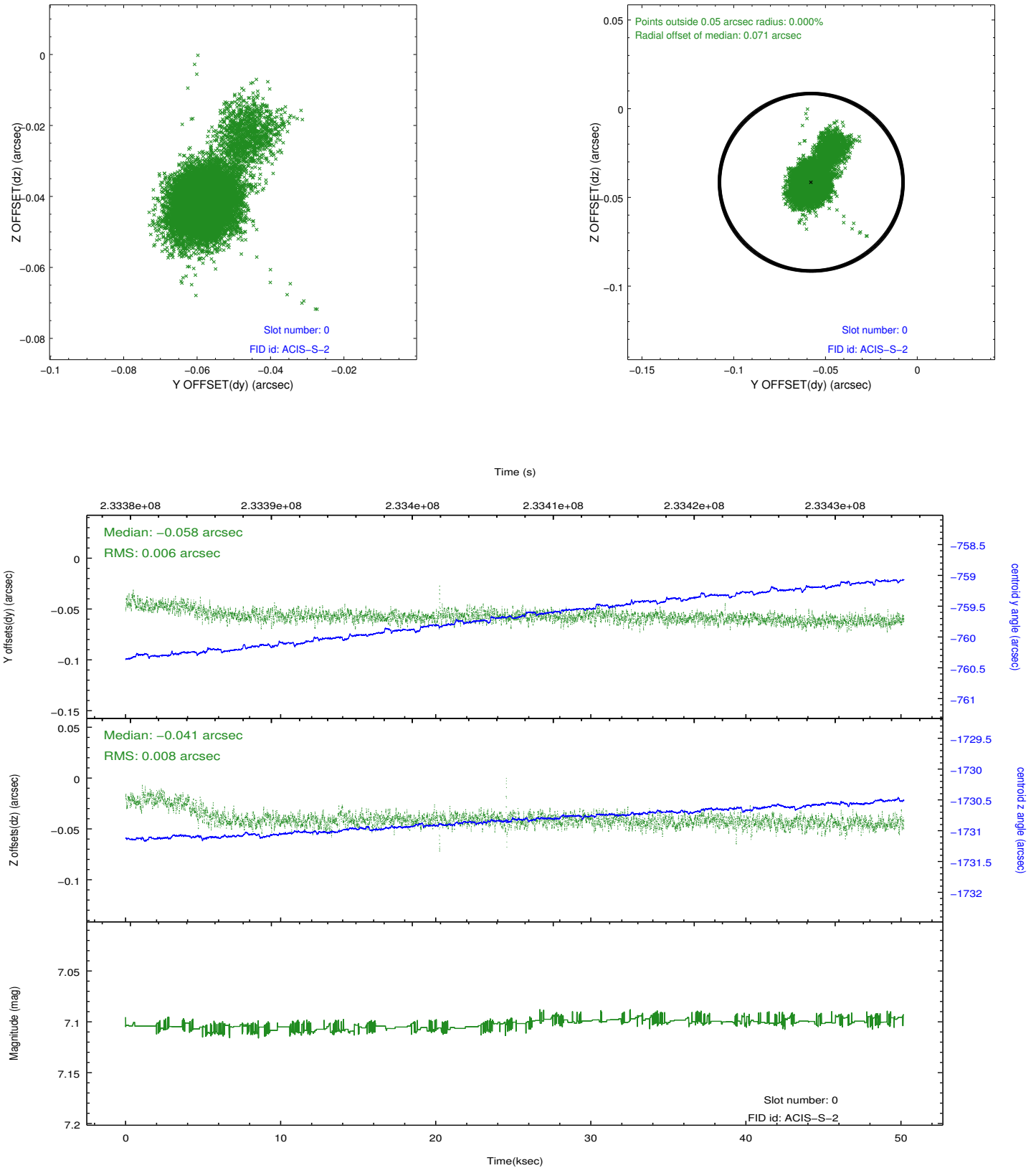


2.4.5 Slot 7

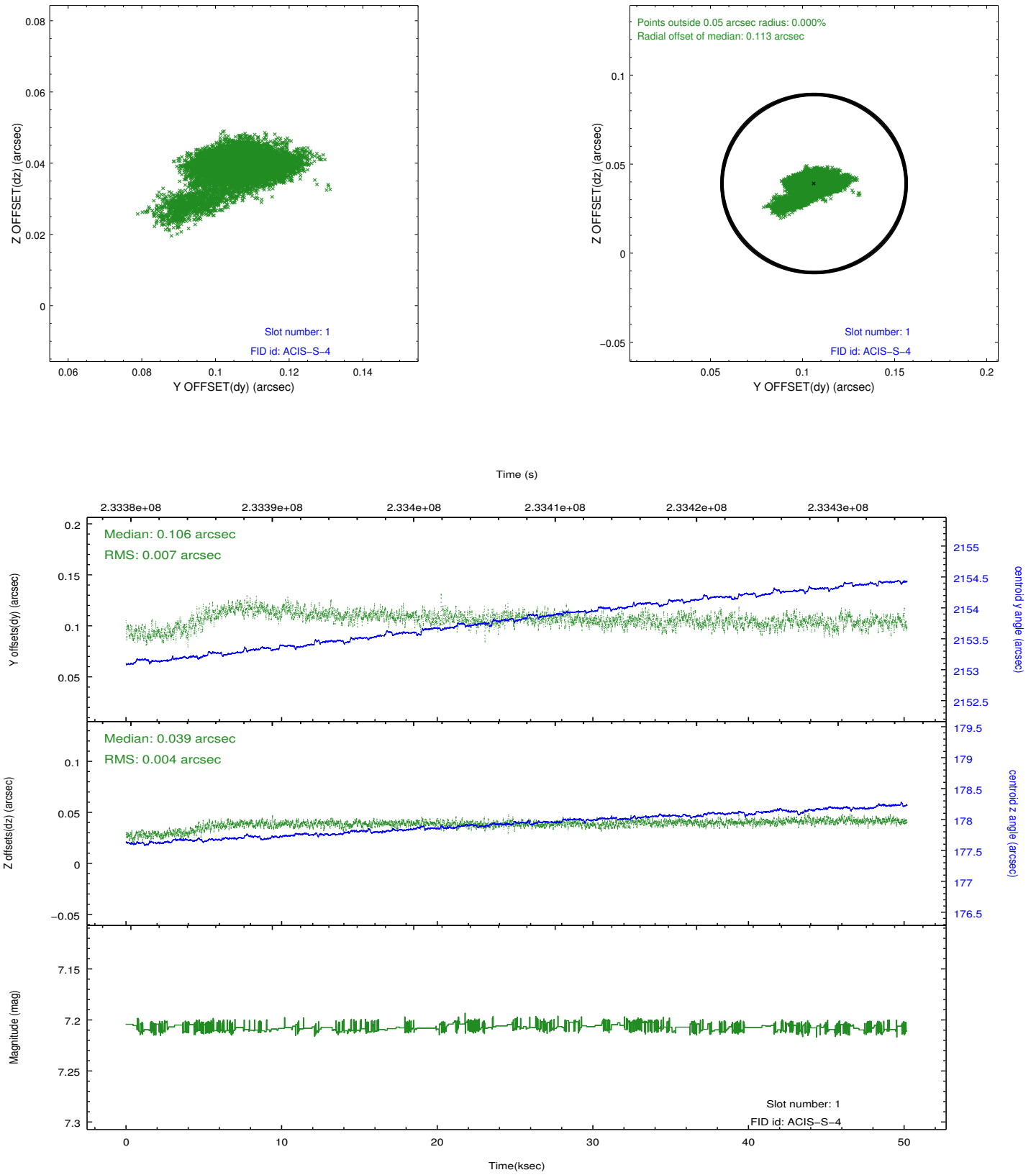


2.5 FID Slots

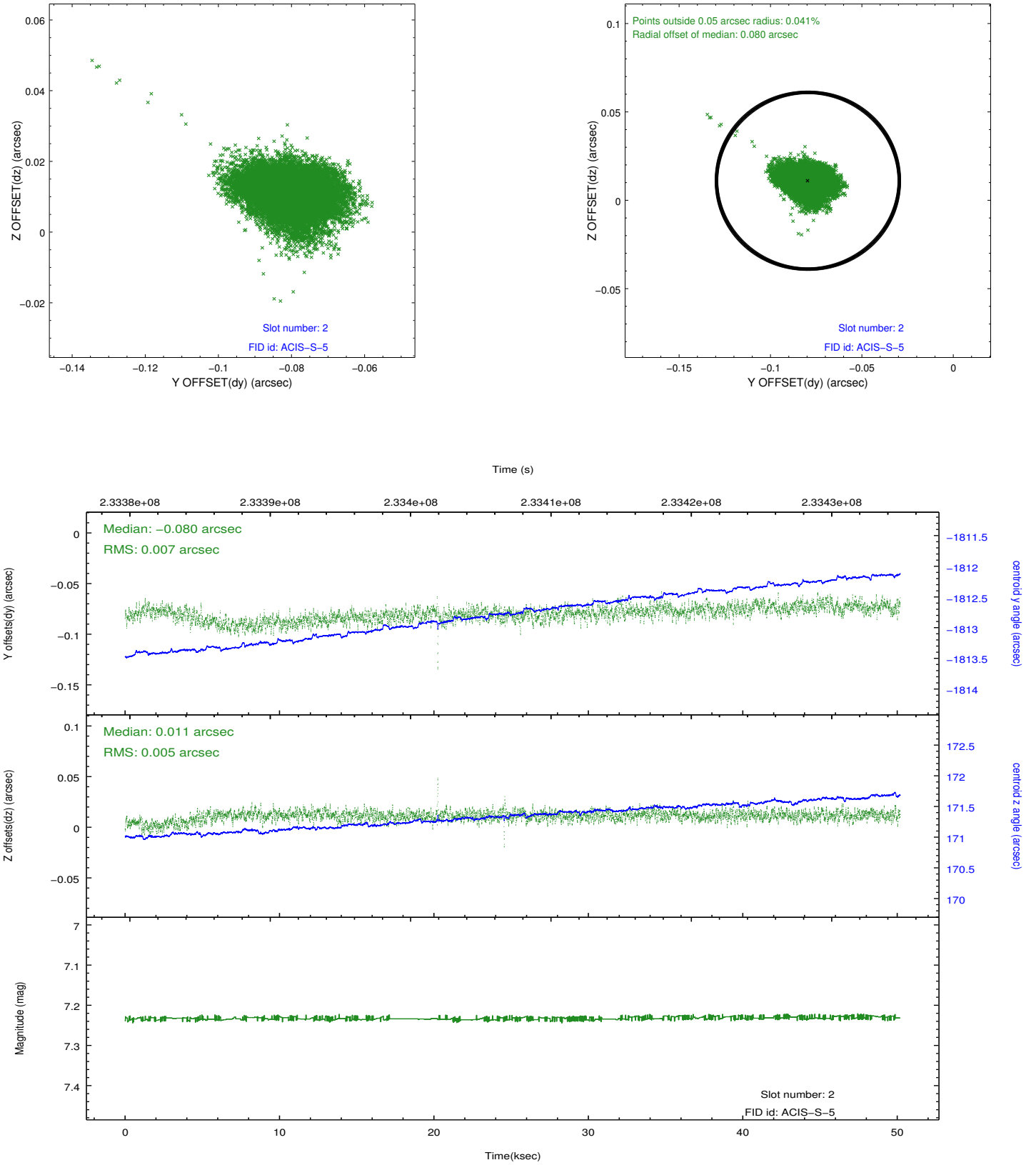
2.5.1 Slot 0



2.5.2 Slot 1



2.5.3 Slot 2



A Summary

A.1 Status

V&V Scientist	Jen Lauer
V&V Date (YYYY-MM-DD)	2013.01.17
V&V Edition	1
V&V Disposition and Status	OK
V&V Charge Time	50.17349

A.2 Comments