

V&V Reference Report

L2 ASCDS Version : 8.4.3

Observation 6237 - L2 Version 4
Chandra X-Ray Center

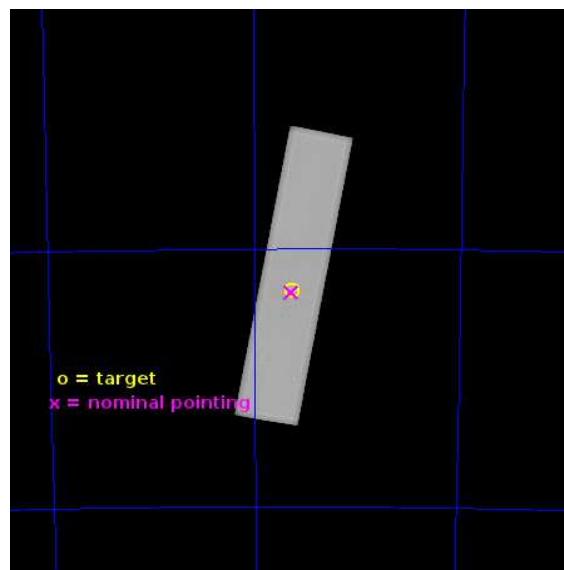
L2 Processing Date : Jun 28 2013

Contents

1	Front	2
2	OBI	3
2.1	OBI	3
2.1.1	Images	3
2.1.2	Parameters	4
2.1.3	Events	4
2.2	Compared Parameters	5
2.3	Aspect	6
2.4	Star Slots	9
2.4.1	Slot 3	9
2.4.2	Slot 4	10
2.4.3	Slot 5	11
2.4.4	Slot 6	12
2.4.5	Slot 7	13
2.5	FID Slots	14
2.5.1	Slot 0	14
2.5.2	Slot 1	15
2.5.3	Slot 2	16
A	Summary	17
A.1	Status	17
A.2	Comments	17

1 Front

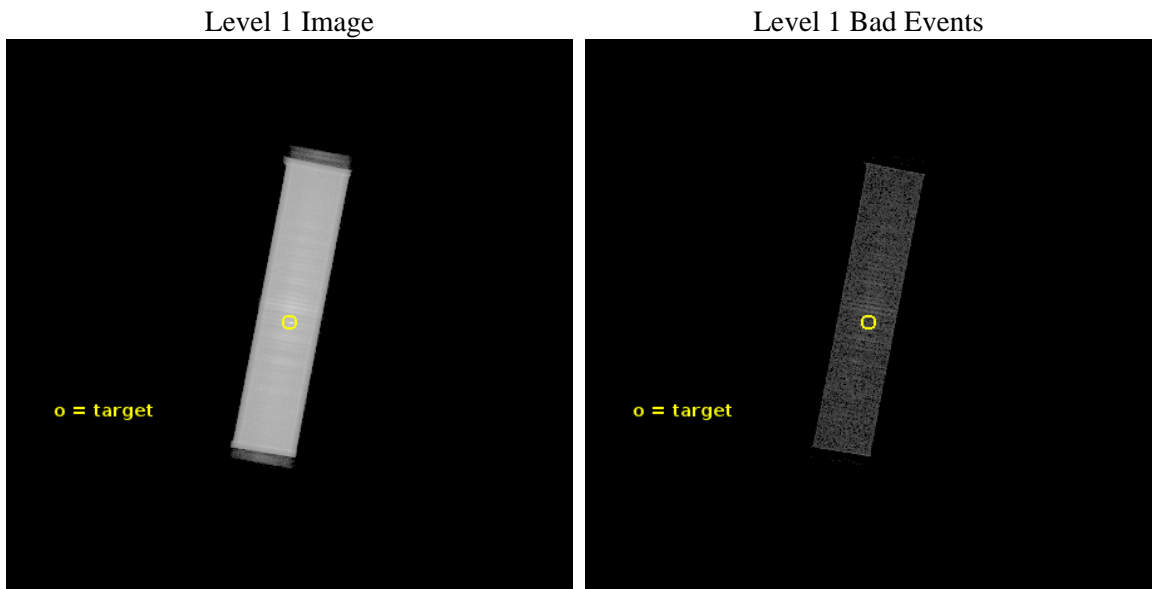
seq_num	500535	Sequence number
obs_id	6237	Observation id
title	Search for Sub-Millisecond Pulsars in 47 Tuc	Proposal title
observer	Prof. Robert Rutledge	Principal investigator
object	47 Tuc	Source name
ra_targ	6.021667	Observer's specified target RA [deg]
dec_targ	-72.080528	Observer's specified target Dec [deg]
ra_nom	6.0240301869131	Nominal RA [deg]
dec_nom	-72.085171136645	Nominal Dec [deg]
roll_nom	280.44557162562	Nominal Roll [deg]
revision	4	Processing version of data
ontime	50168.883572668	[s]
livetime	49956.547501498	Ontime multiplied by DTCOR
l2events	2178328	Number of level 2 events



2 OBI

2.1 OBI

2.1.1 Images



2.1.2 Parameters

obi_num	1	Obi number	sched_exp_time	50000.000000	[s] Scheduled observation exposure time
ascdsver	10	Processing system revision	ontime	50168.883572668	[s]
caldsver	4.5.7	 	l1events	3209107	Number of level 1 events
date	2013-06-29T02:46:21	Date and time of file creation			
revision	4	Processing version of data			

2.1.3 Events

Level 1 Events

	segment 1	segment 2	segment 3
level 1 events	3908	32051918	
rejected events	135	108821	0
rejected %	3%	3%	0%

2.2 Compared Parameters

Parameter	Planned	Actual	Parameter	Planned	Actual
Instrument	HRC	HRC	Obspar format version number	7	7
Detector	HRC-S	HRC-S	Obspar file type	PREDICTED	ACTUAL
Grating	NONE	NONE	Obspar update status	NONE	UPDATED
Data mode	OBSERVING	OBSERVING			
Observation mode	POINTING	POINTING			
[deg] Pointing RA	5.960315	6.024030186913102			
[deg] Pointing Dec	-72.064312	-72.0851711366448			
[deg] Pointing Roll	280.317626	280.4455716256158			
[mm] SIM focus pos	-1.533336	-1.526339935833849			
[mm] SIM defocus	7.710433287538843e-07	0.006996703570447904			
[mm] SIM translation stage pos	250.455976	250.466033080201			
[mm] SIM translation stage offset	0	-0.01005468664627074			
[s] Observation start time (MET)	251821652.184000	251820520.6363			
Observation start date	2005-12-24T14:26:28	2005-12-24T14:08:40			
[s] Observation end time (MET)	251871652.184000	251872541.43871			
Observation end date	2005-12-25T04:19:48	2005-12-25T04:35:41			

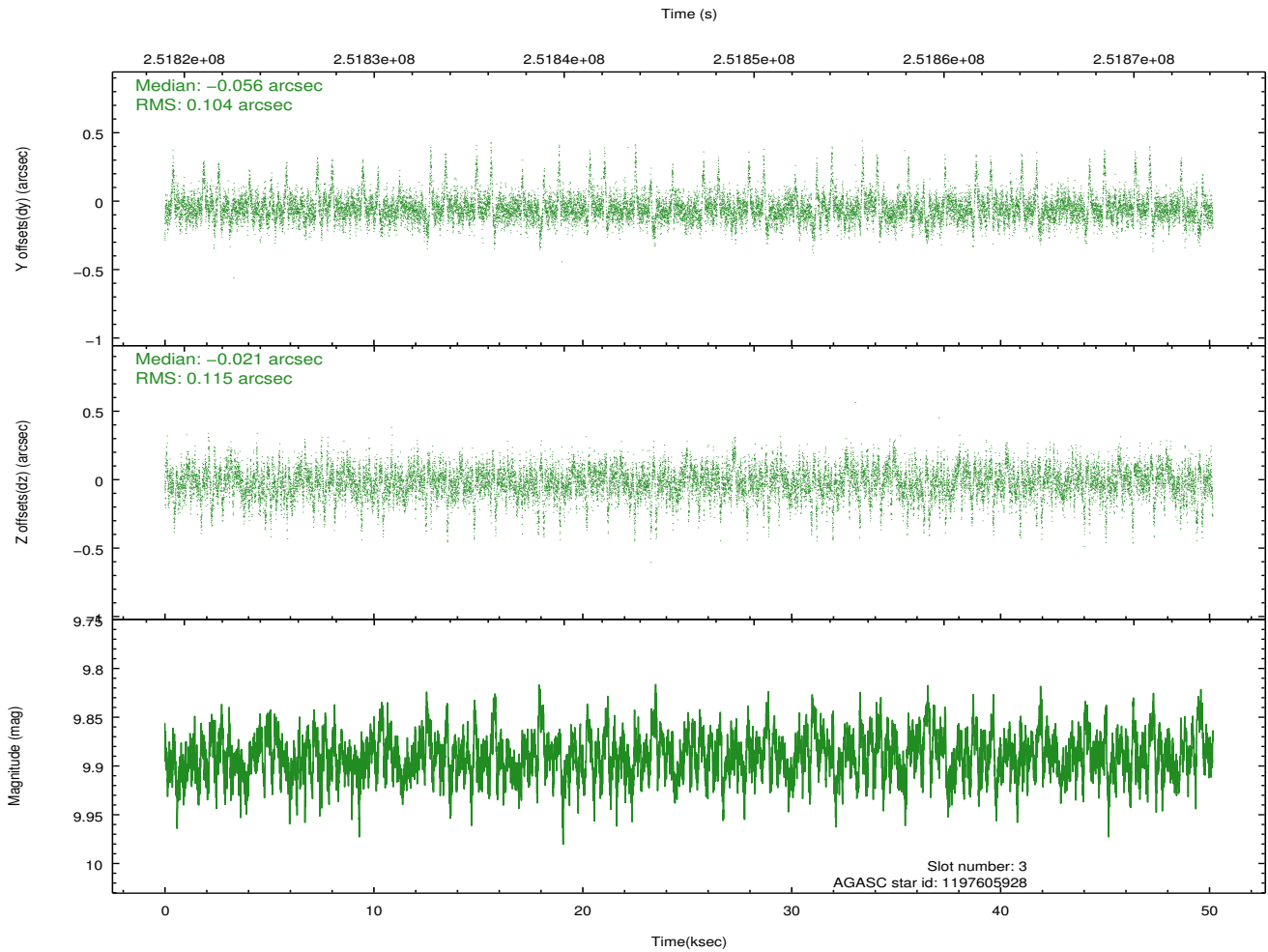
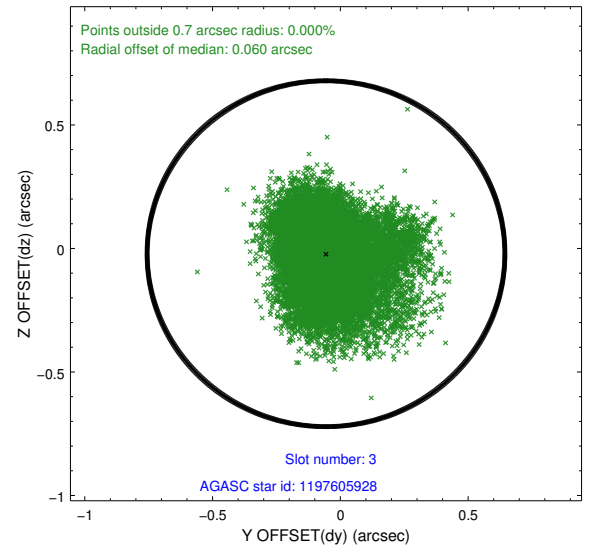
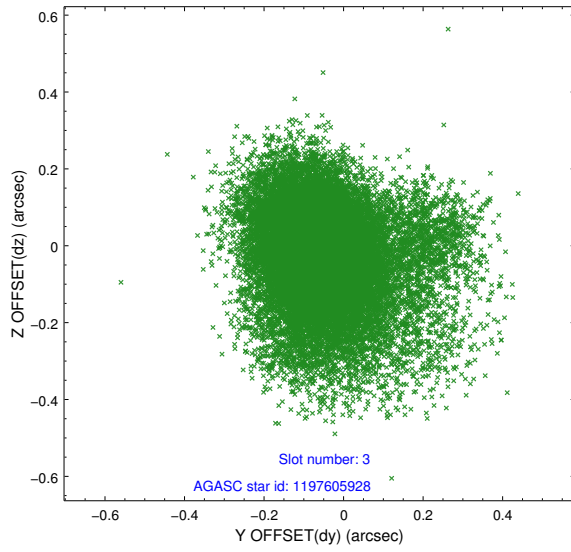
2.3 Aspect

Slot Statistics

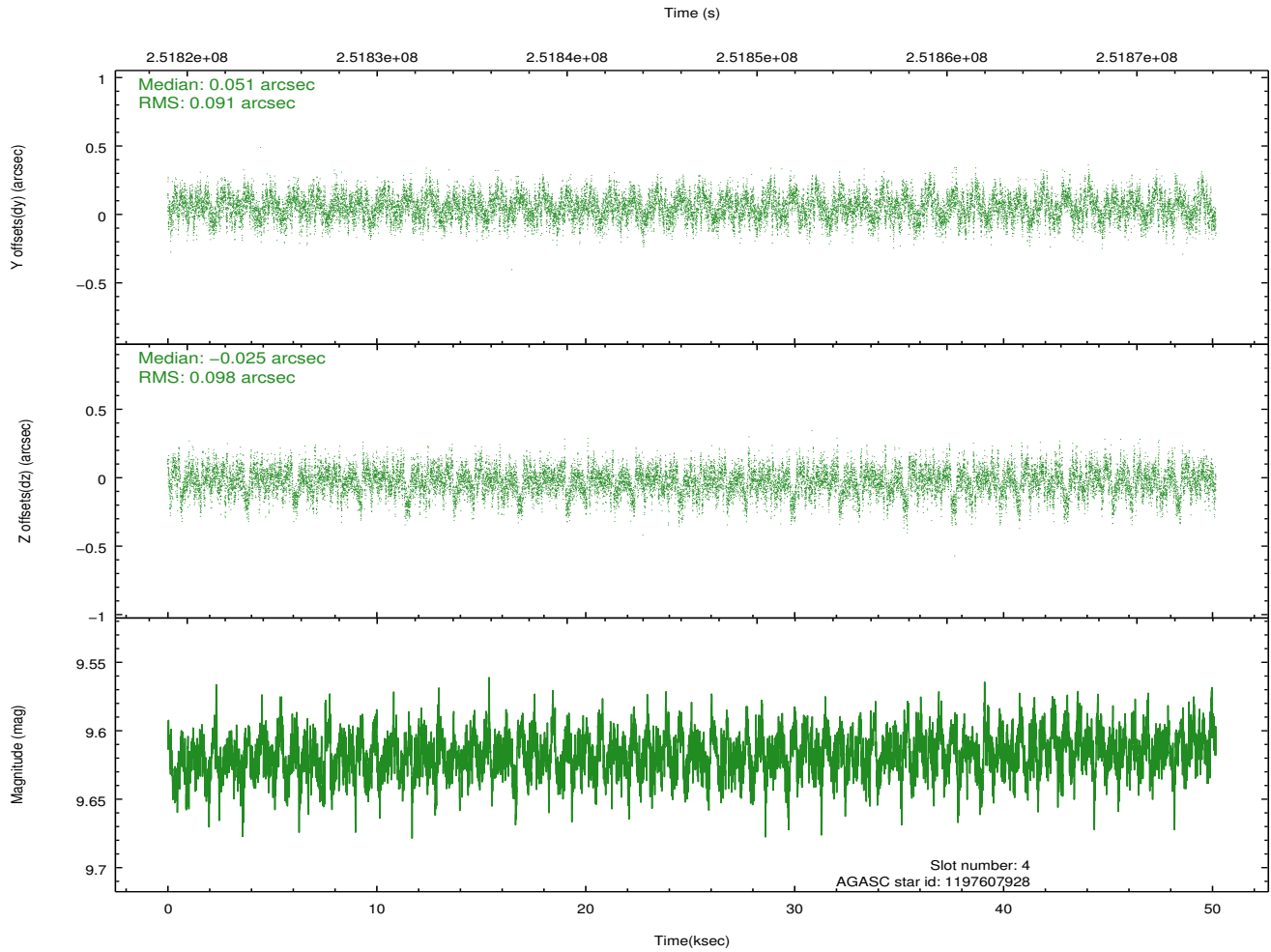
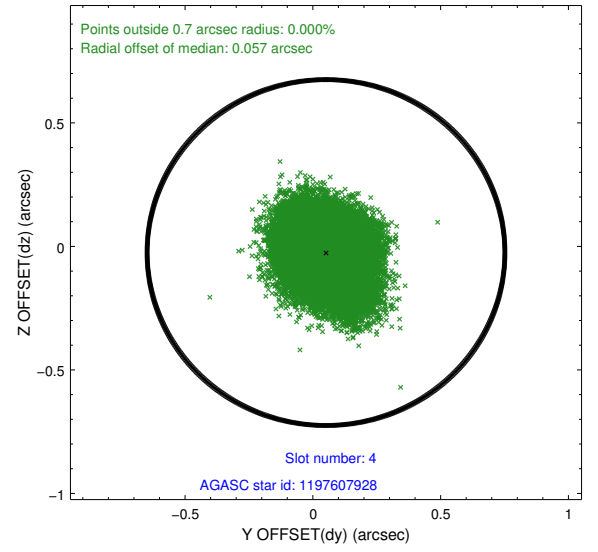
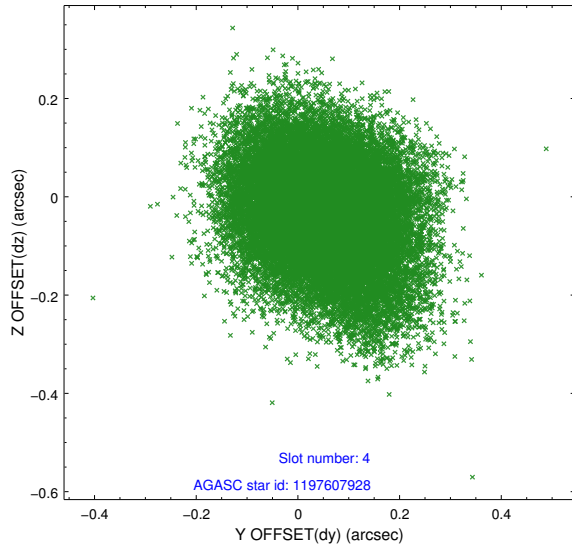
slot	status	id	mag	n_pts	med_dy	med_dz	dr1	dr2	ra	dec	mean_y	mean_z
0	FID	HRC-S-1	7.01	12237	0.145	-0.159	0.024	0.043	0.000000	0.000000	-1162.86	-459.68
1	FID	HRC-S-2	7.01	12236	0.139	-0.111	0.007	0.012	0.000000	0.000000	1236.69	-452.33
2	FID	HRC-S-3	7.03	12236	0.105	-0.031	0.027	0.046	0.000000	0.000000	-1165.51	569.94
3	GUIDE	1197605928	9.89	24437	-0.056	-0.021	0.152	0.296	4.361277	-72.423732	985.20	-1945.55
4	GUIDE	1197607928	9.62	24436	0.051	-0.025	0.143	0.232	7.837743	-72.165759	761.86	1965.37
5	GUIDE	1197617752	10.28	24419	0.006	0.221	0.170	0.283	4.480632	-72.284129	508.54	-1739.31
6	GUIDE	1197620848	10.03	24446	-0.022	-0.064	0.177	0.302	3.913465	-71.739620	-1524.38	-2069.09
7	GUIDE	1197609880	10.16	24436	0.025	-0.096	0.190	0.307	4.410960	-71.992353	-541.28	-1653.88

2.4 Star Slots

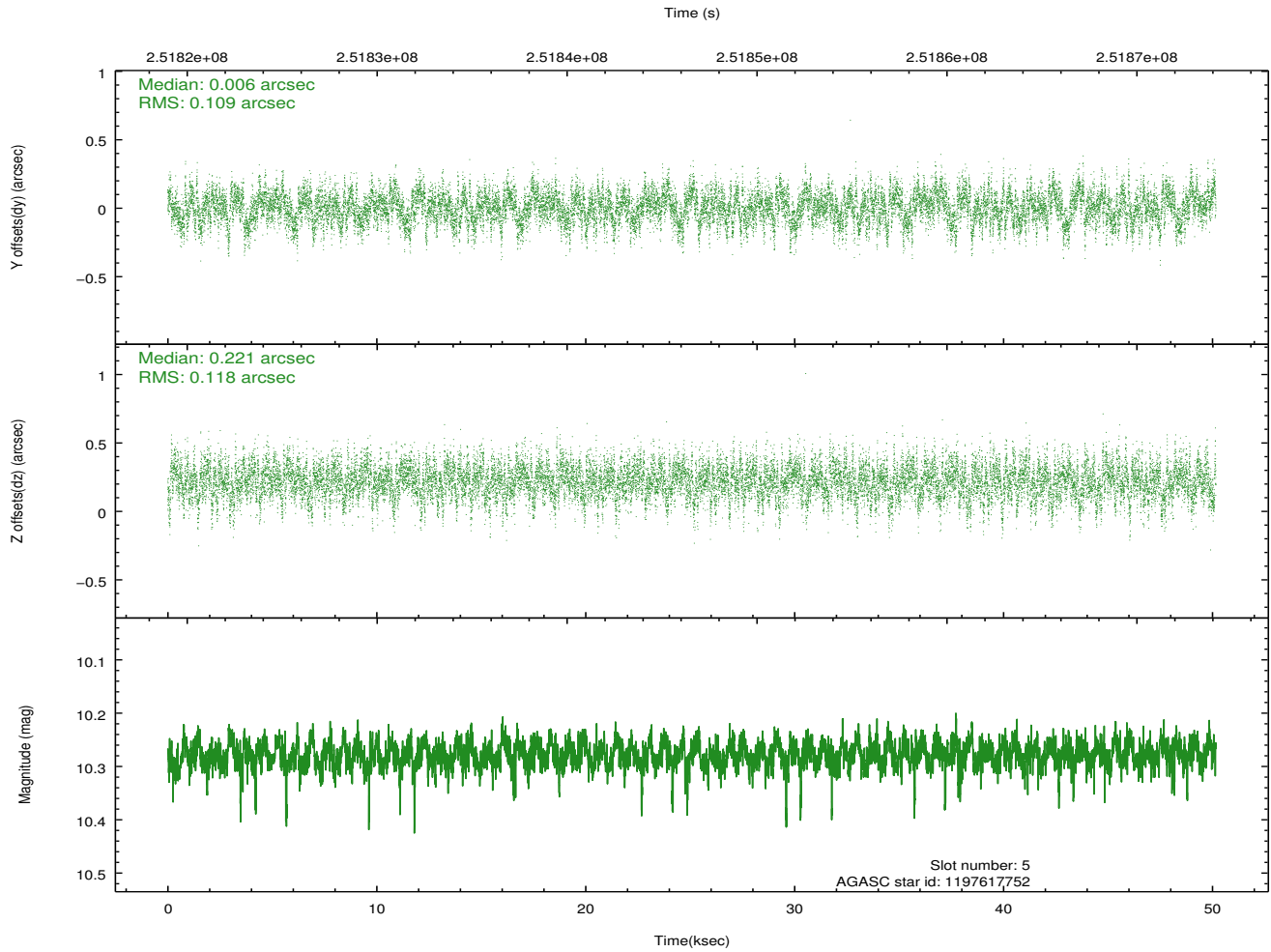
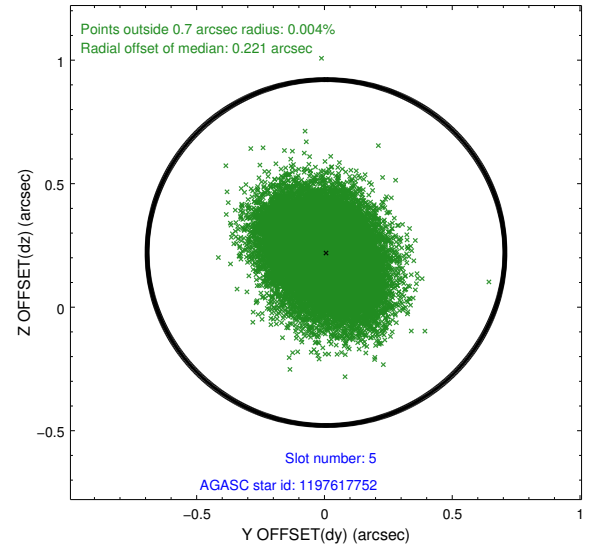
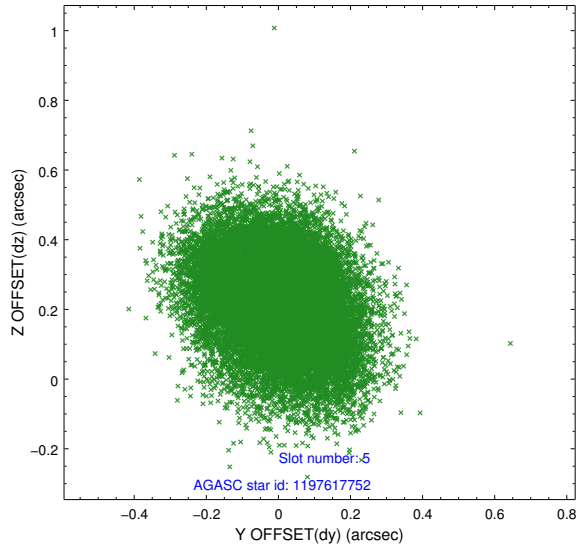
2.4.1 Slot 3



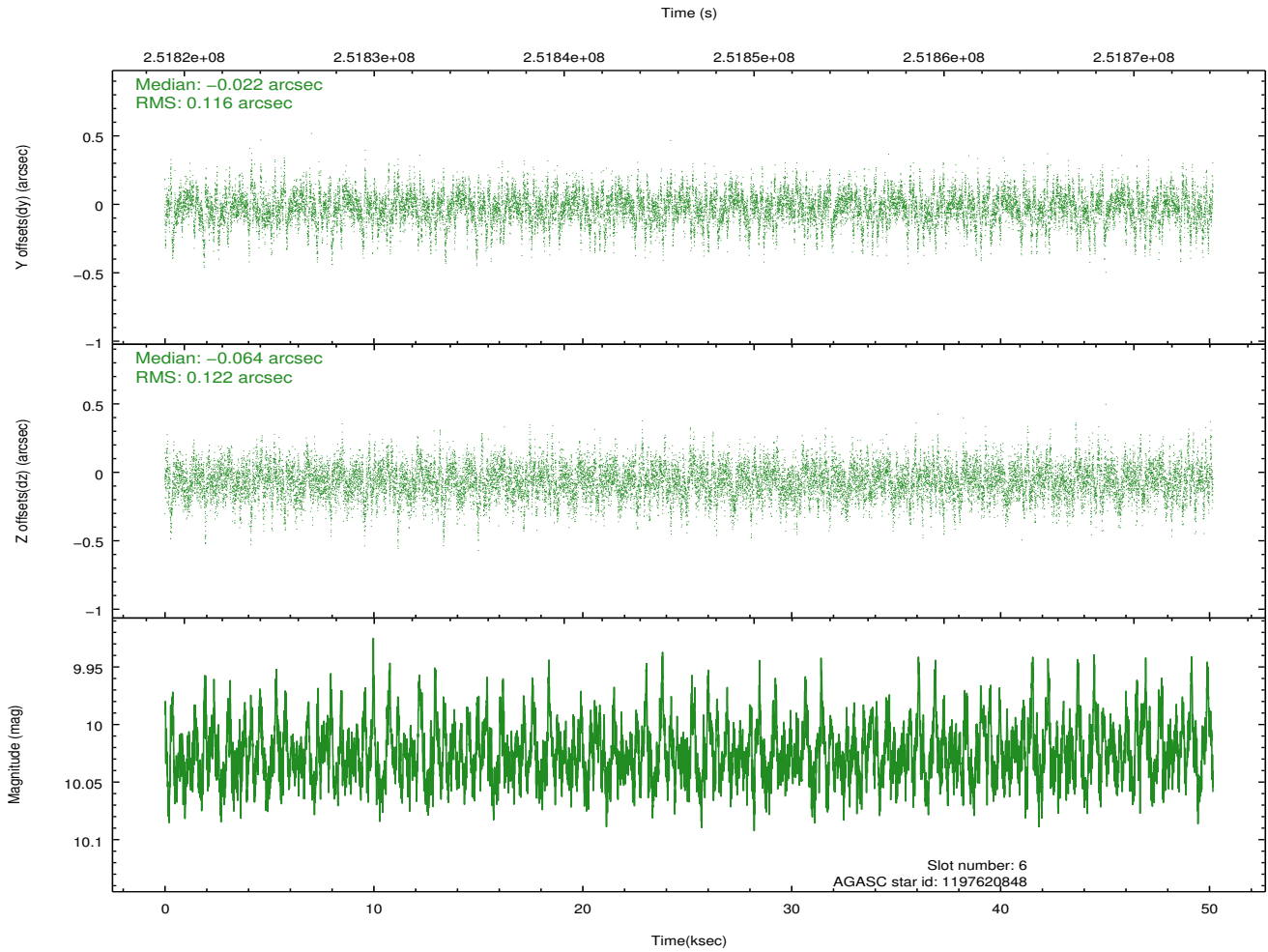
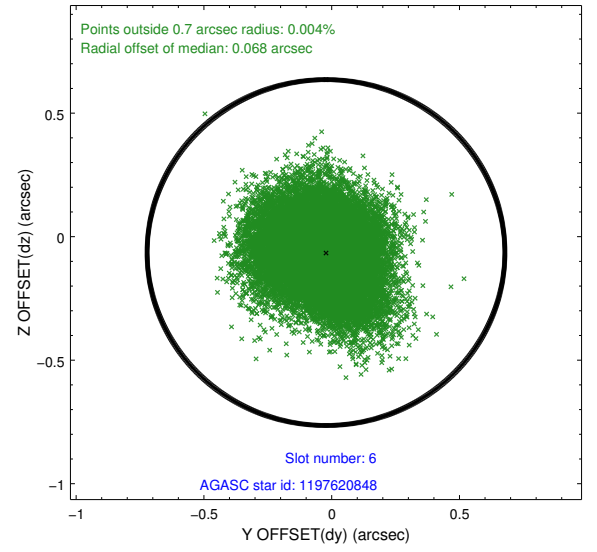
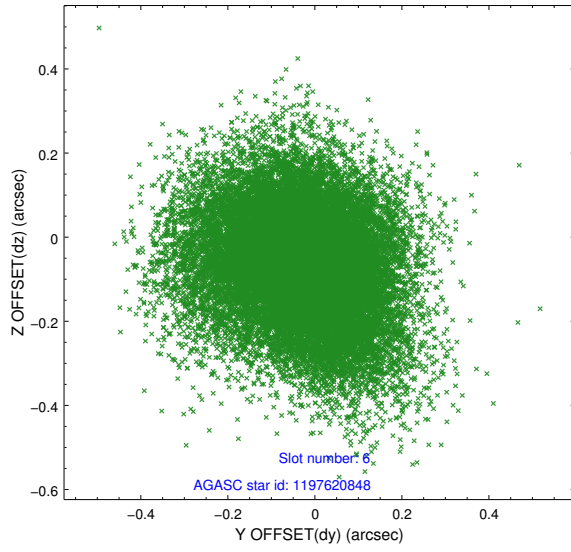
2.4.2 Slot 4



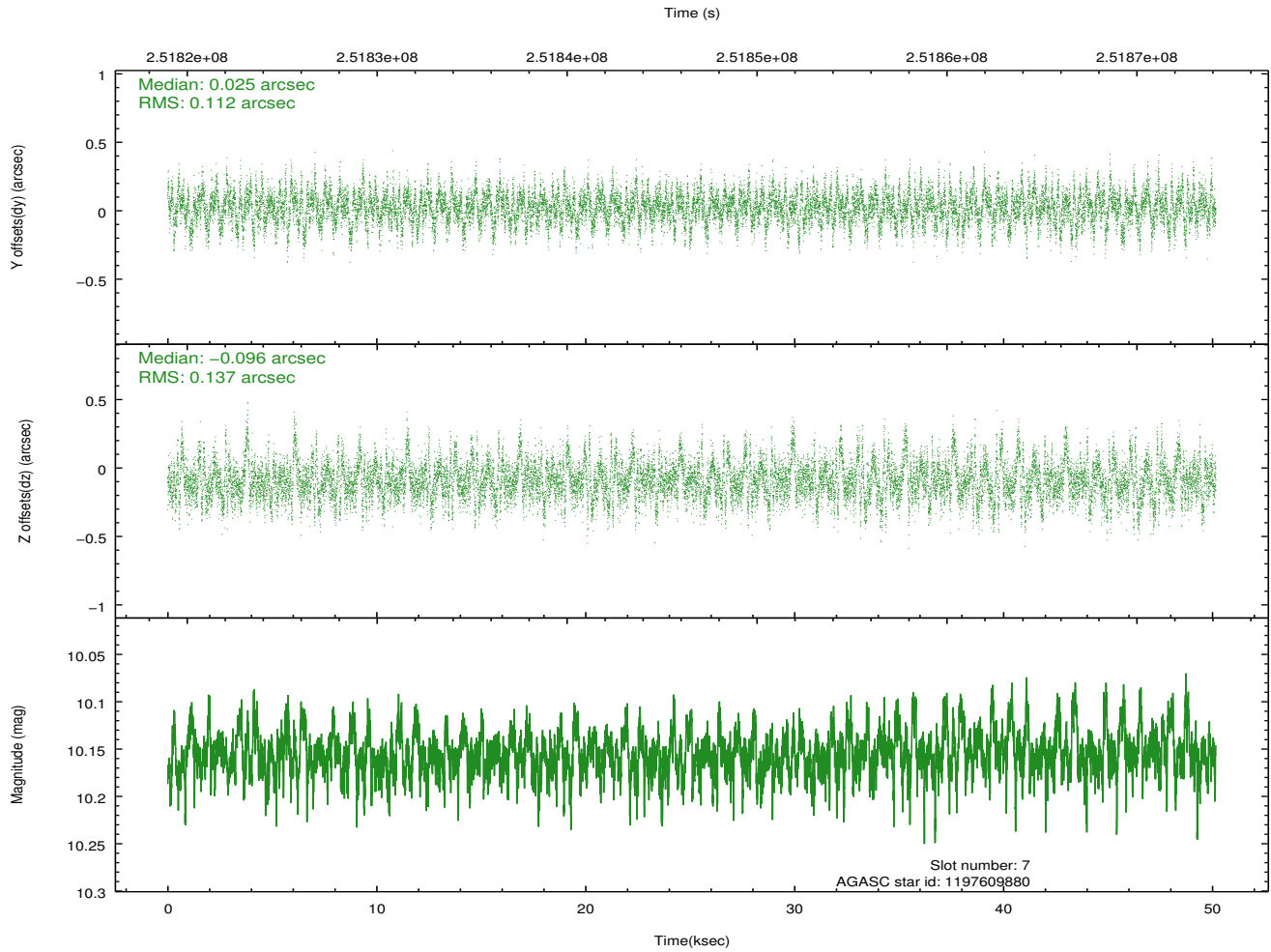
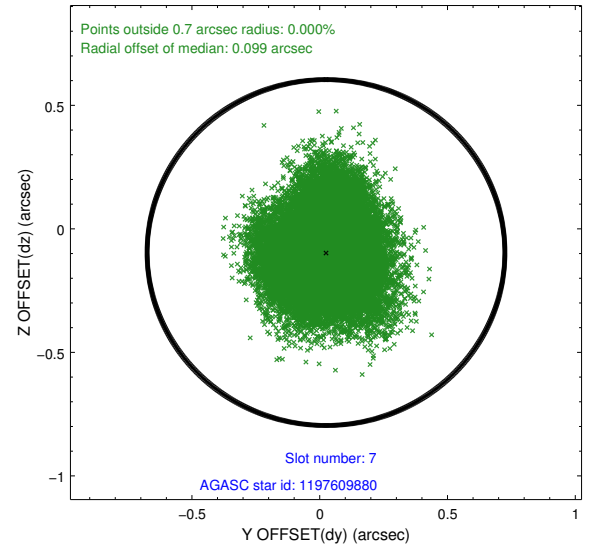
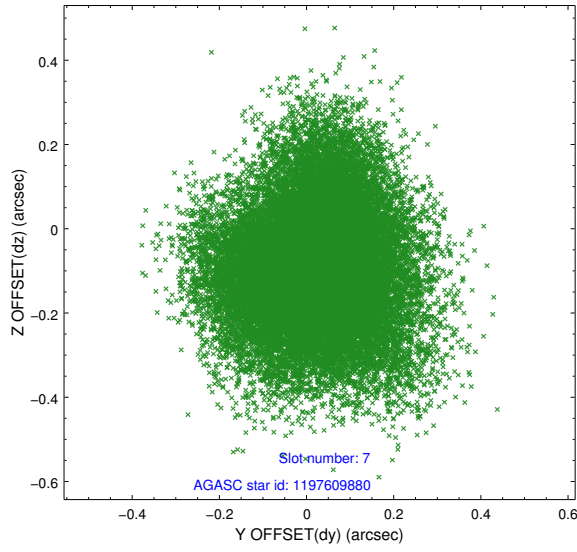
2.4.3 Slot 5



2.4.4 Slot 6

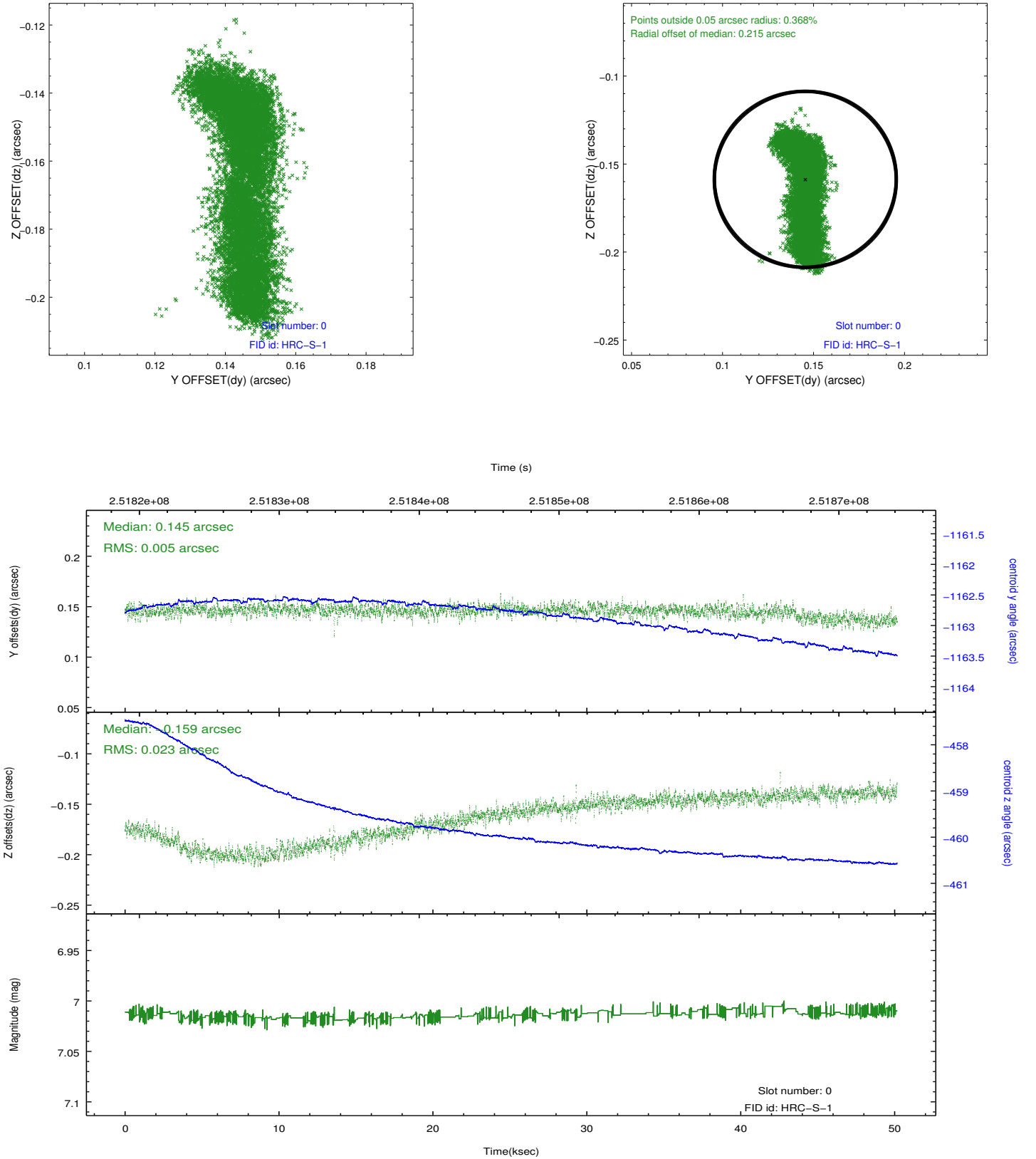


2.4.5 Slot 7

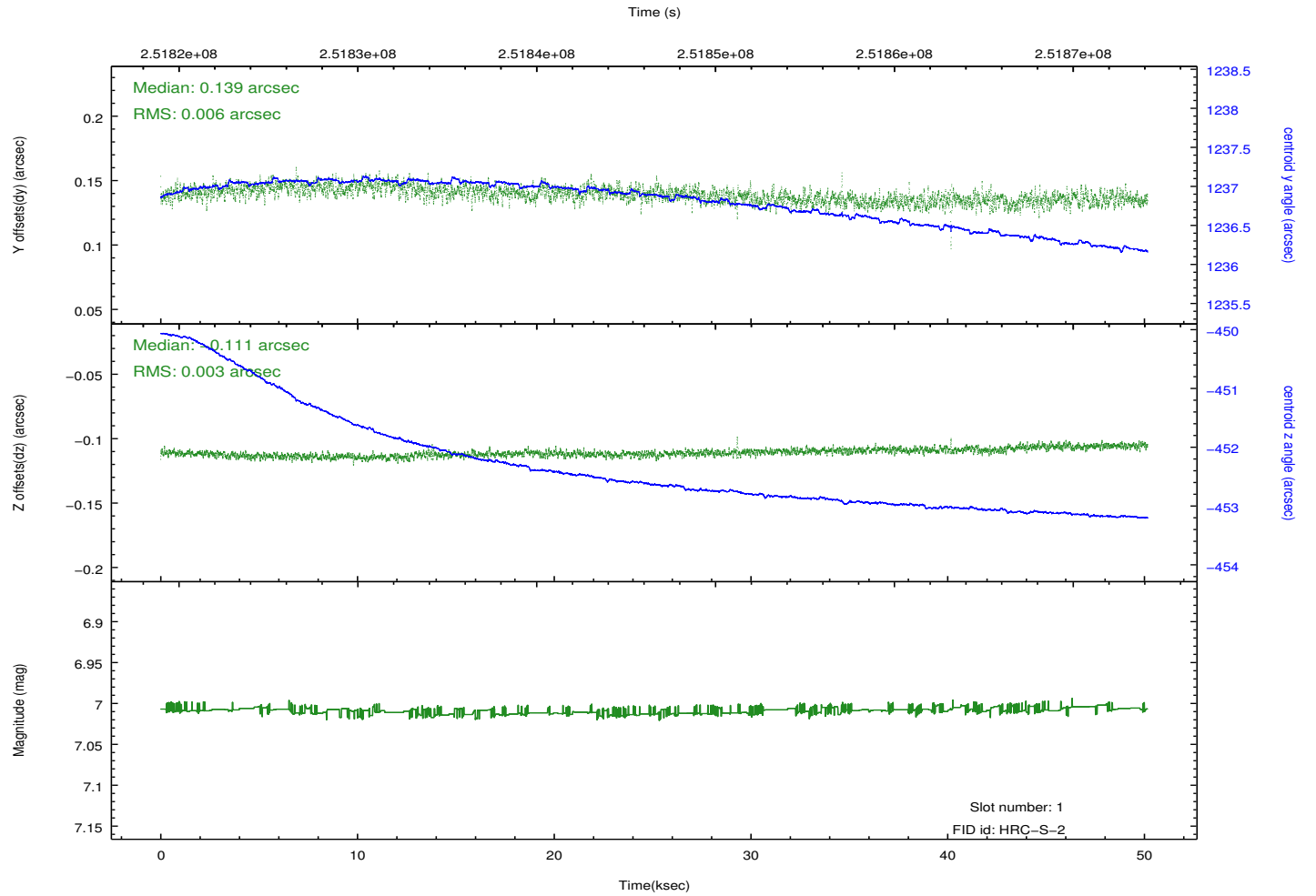
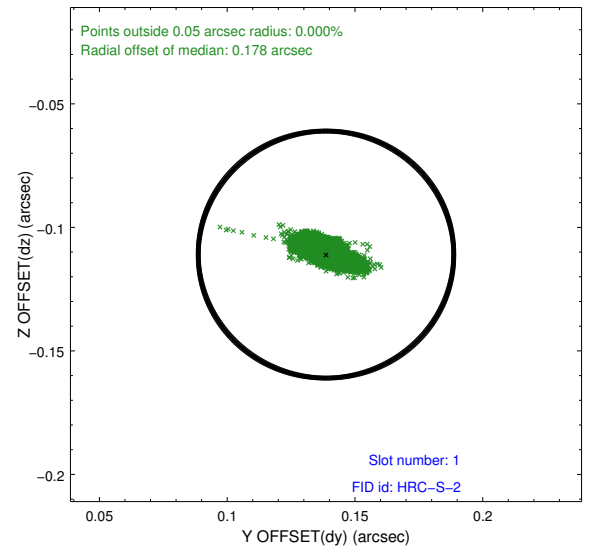
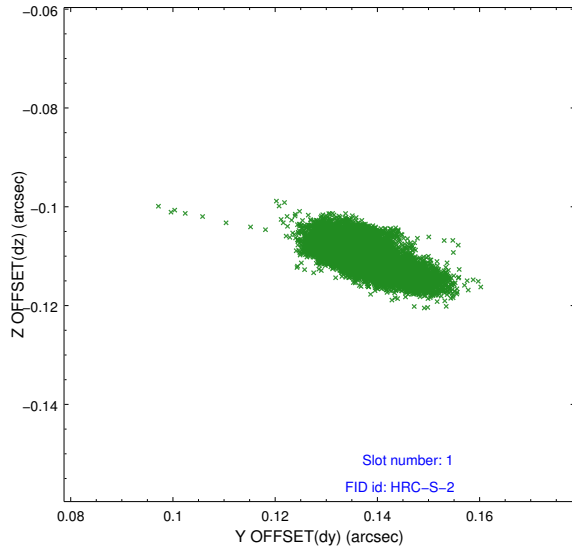


2.5 FID Slots

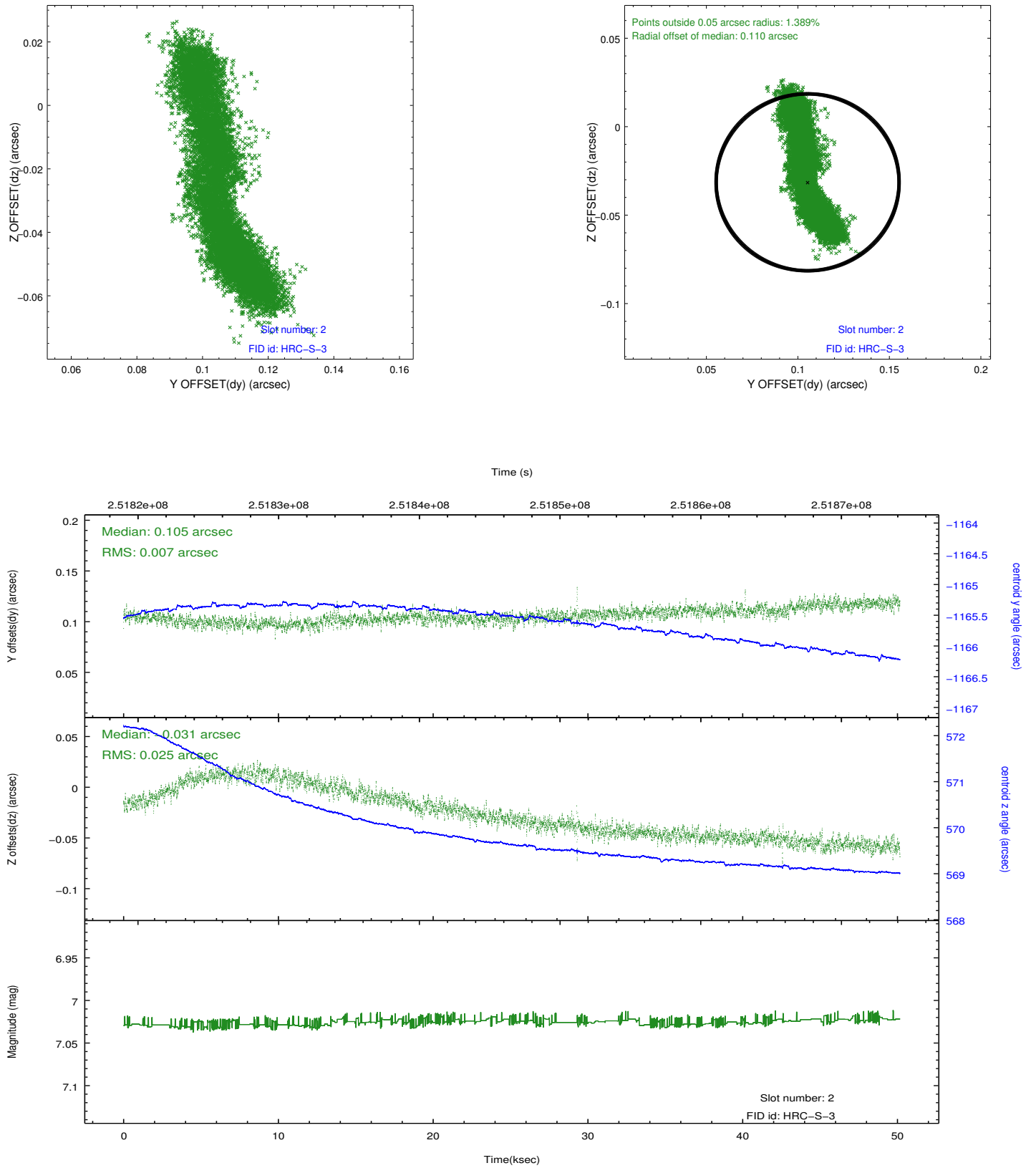
2.5.1 Slot 0



2.5.2 Slot 1



2.5.3 Slot 2



A Summary

A.1 Status

V&V Scientist	Beth Sundheim
V&V Date (YYYY-MM-DD)	2013.07.01
V&V Edition	1
V&V Disposition and Status	OK
V&V Charge Time	50.16862

A.2 Comments