

V&V Reference Report

L2 ASCDS Version : 8.5.1

Observation 6227 - L2 Version 4
Chandra X-Ray Center

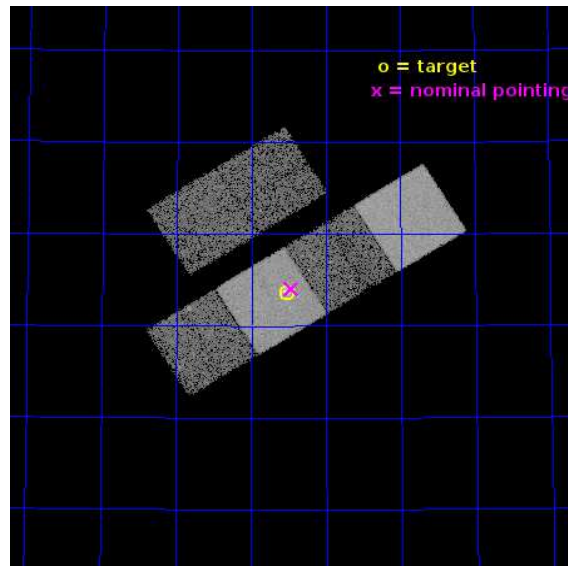
L2 Processing Date : Jul 16 2015

Contents

1	Front	2
2	OBI	3
2.1	OBI	3
2.1.1	Images	3
2.1.2	Bias	3
2.1.3	Parameters	4
2.1.4	Events	4
2.2	Compared Parameters	5
2.3	Aspect	6
2.4	Star Slots	9
2.4.1	Slot 3	9
2.4.2	Slot 4	10
2.4.3	Slot 5	11
2.4.4	Slot 6	12
2.4.5	Slot 7	13
2.5	FID Slots	14
2.5.1	Slot 0	14
2.5.2	Slot 1	15
2.5.3	Slot 2	16
A	Summary	17
A.1	Status	17
A.2	Comments	17

1 Front

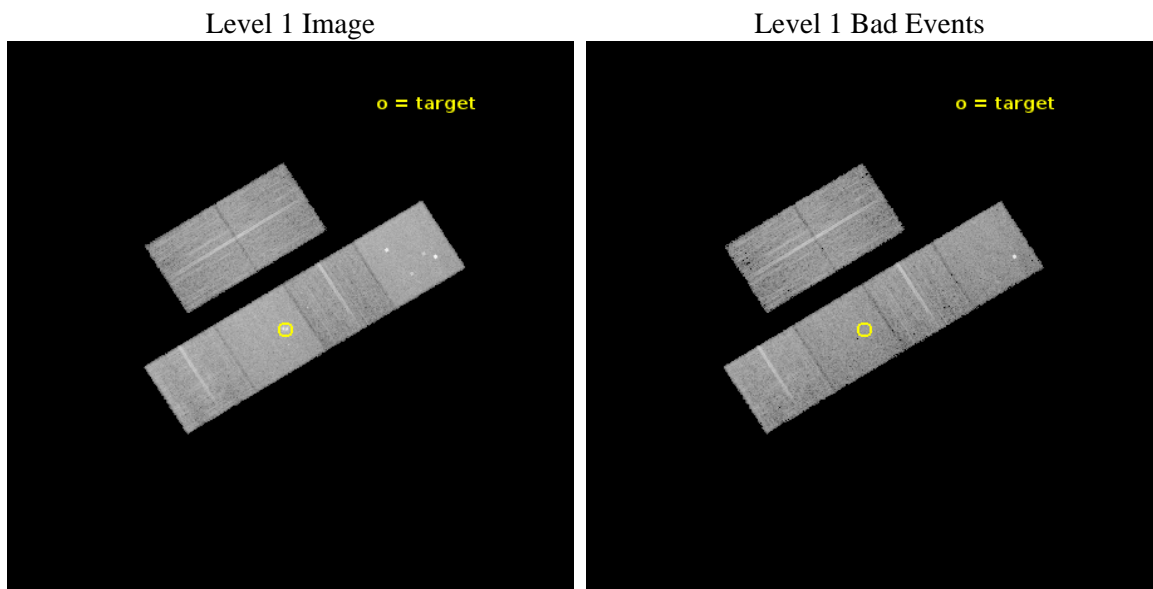
seq_num	701172	Sequence number
obs_id	6227	Observation id
title	An accretion eruption in the western nucleus of Arp 299	Proposal t
observer	Prof Kirpal Nandra	Principal investigator
object	NGC 3690	Source name
dtcycle	0	
cycle	P	events from which exps? Prim/Second/Both
ra_targ	172.13	Observer's specified target RA [deg]
dec_targ	58.561306	Observer's specified target Dec [deg]
ra_nom	172.11620071804	Nominal RA [deg]
dec_nom	58.567829479621	Nominal Dec [deg]
roll_nom	148.03385404464	Nominal Roll [deg]
revision	4	Processing version of data
ontime	10322.493611693	Sum of GTIs [s]
livetime	10191.783982123	Livetime [s]
ontime2	10319.252631426	Sum of GTIs [s]
ontime3	10322.493611693	Sum of GTIs [s]
ontime5	10322.493611693	Sum of GTIs [s]
ontime6	10322.493611693	Sum of GTIs [s]
ontime7	10322.493611693	Sum of GTIs [s]
ontime8	10322.493611693	Sum of GTIs [s]
l2events	125749	Number of level 2 events



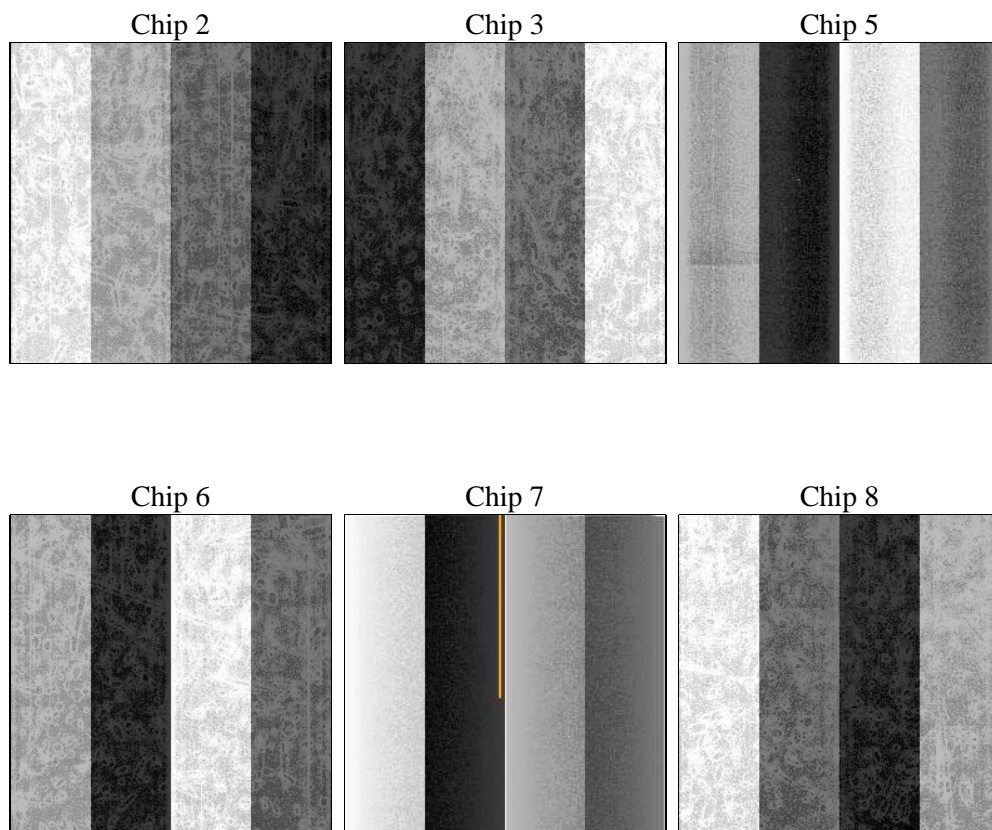
2 OBI

2.1 OBI

2.1.1 Images



2.1.2 Bias



2.1.3 Parameters

obi_num	0	Obi number	sched_exp_time	10200.000000	[s] Scheduled observation exposure time
ascdsver	10.4.1	Processing system revision	ontime	10322.493611693	Sum of GTIs [s]
caldsver	4.6.8	 	ontime2	10319.252631426	Sum of GTIs [s]
date	2015-07-16T14:46:13	Date and time of file creation	ontime3	10322.493611693	Sum of GTIs [s]
revision	4	Processing version of data	ontime5	10322.493611693	Sum of GTIs [s]
			ontime6	10322.493611693	Sum of GTIs [s]
			ontime7	10322.493611693	Sum of GTIs [s]
			ontime8	10322.493611693	Sum of GTIs [s]
			l1events	642141	Number of level 1 events

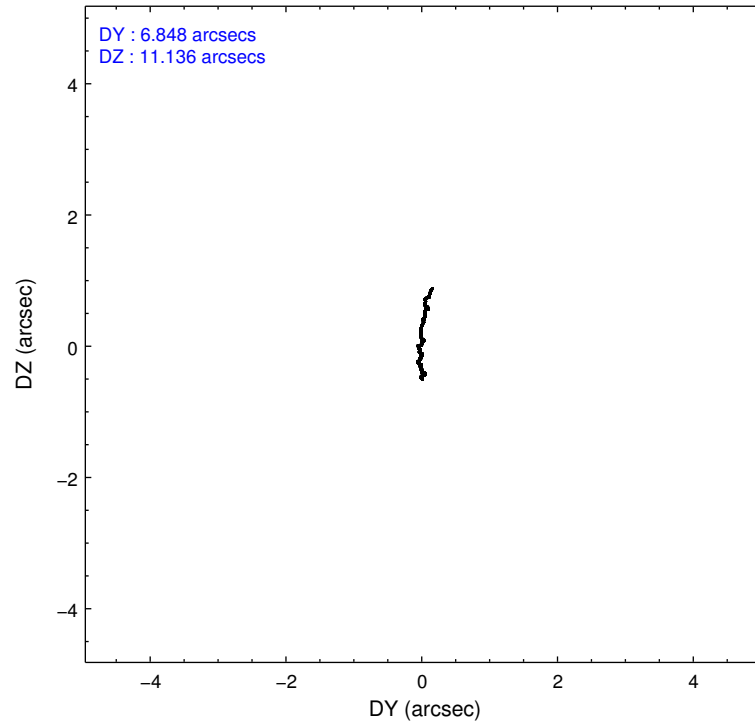
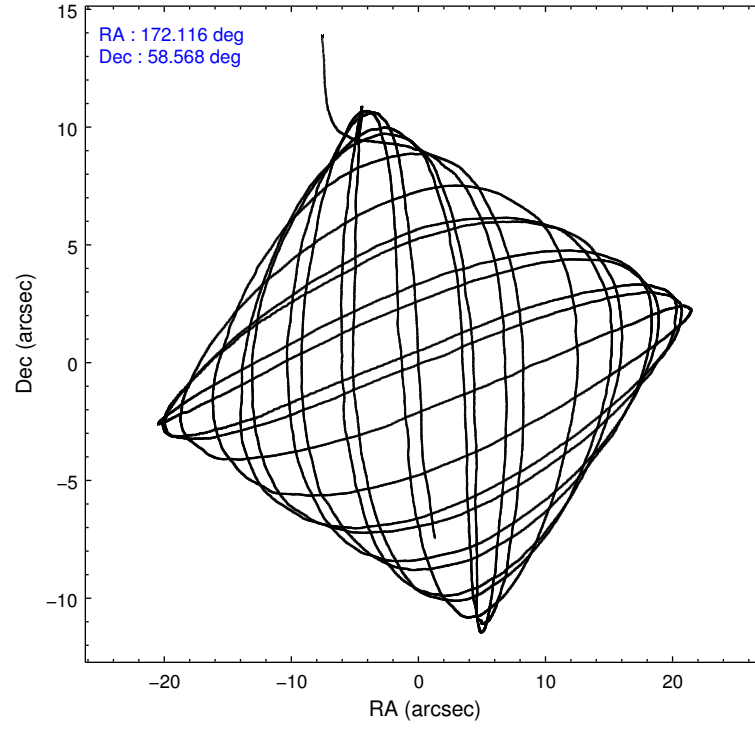
2.1.4 Events

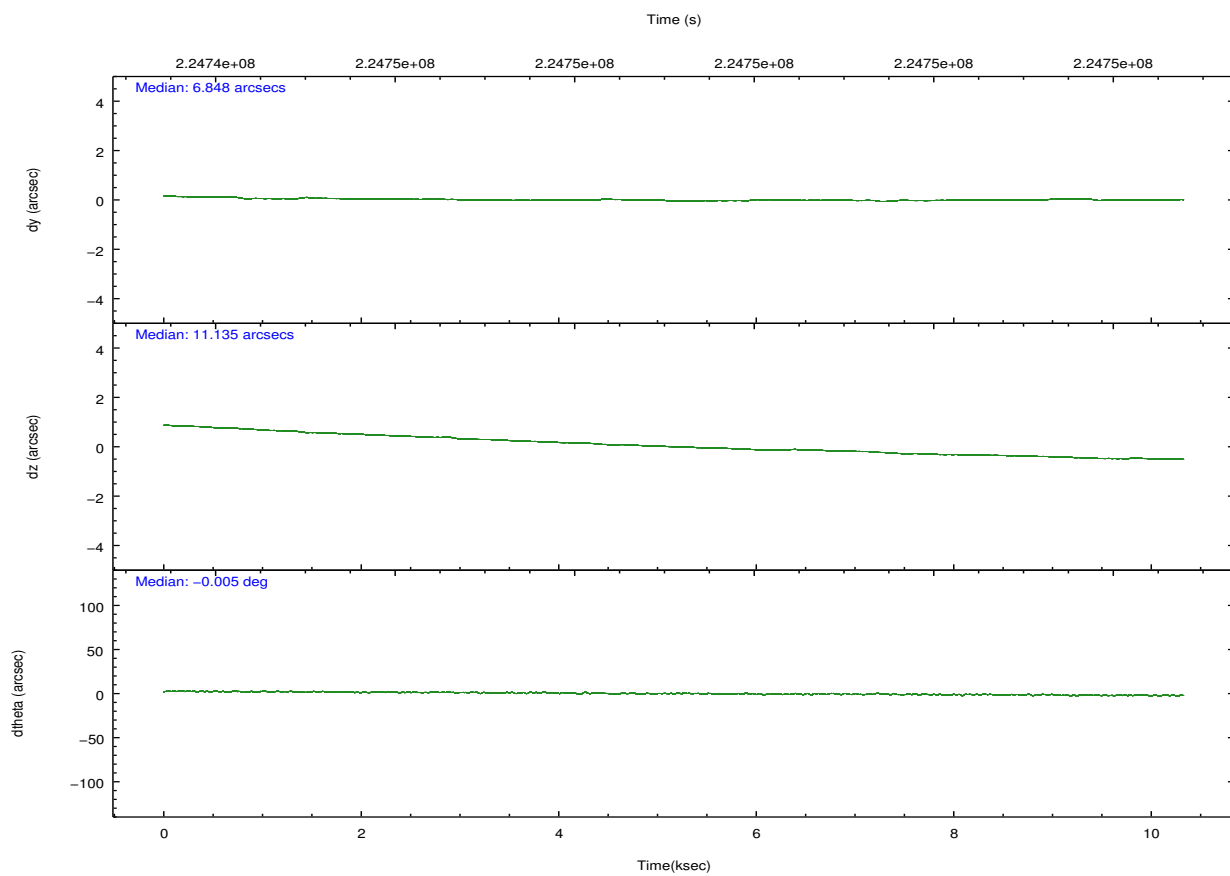
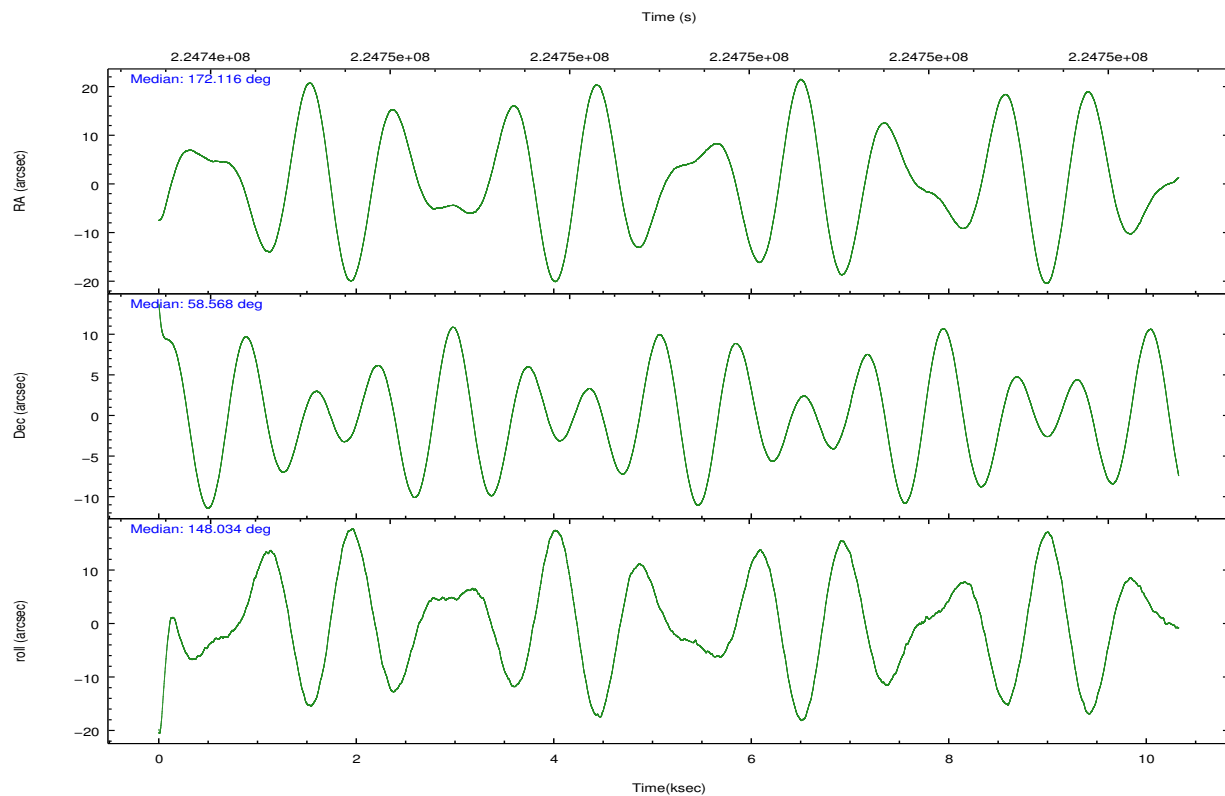
	ccd 2	ccd 3	ccd 5	ccd 6	ccd 7	ccd 8		ccd 2	ccd 3	ccd 5	ccd 6	ccd 7	ccd 8
level 1 events	87301	87555	139186	89043	126224	112832	grade 0 events	4601	4771	7319	4360	5638	7755
rejected events	78591	78567	85978	79869	80461	92483		5%	5%	5%	4%	4%	6%
rejected %	90%	89%	61%	89%	63%	81%	grade 1 events	44	46	404	46	112	78
								0%	0%	0%	0%	0%	0%
							grade 2 events	2108	2024	18258	2269	11056	5407
								2%	2%	13%	2%	8%	4%
							grade 3 events	1025	1049	2942	1011	4975	2641
								1%	1%	2%	1%	3%	2%
							grade 4 events	1025	1027	2325	1023	4923	2327
								1%	1%	1%	1%	3%	2%
							grade 5 events	3566	3941	11461	4252	11805	5476
								4%	4%	8%	4%	9%	4%
							grade 6 events	1696	1828	32688	2282	27298	6283
								1%	2%	23%	2%	21%	5%
							grade 7 events	73236	72869	63789	73800	60417	82865
								83%	83%	45%	82%	47%	73%

2.2 Compared Parameters

Parameter	Planned	Actual	Parameter	Planned	Actual
Instrument	ACIS	ACIS	Obspar format version number	7	7
Detector	ACIS-235678	ACIS-235678	Obspar file type	PREDICTED	ACTUAL
Grating	NONE	NONE	Obspar update status	NONE	UPDATED
Data mode	FAINT	FAINT	Number of optional ACIS chips dropped	0	0
Observation mode	POINTING	POINTING	On-chip summing requested	N	N
[deg] Pointing RA	172.168441	172.116200718038	Subarray requested	NONE	NONE
[deg] Pointing Dec	58.567197	58.56782947962111	Alternating exposures requested	N	N
[deg] Pointing Roll	147.832689	148.0338540446414	[s] Primary exposure time	0.000000	3.2
[mm] SIM focus pos	-0.684267	-0.6828225247311905			
[mm] SIM defocus	0	0.001444936568705701			
[mm] SIM translation stage pos	-190.132523	-190.1425803651734			
[mm] SIM translation stage offset	0	0.01005778216563158			
[s] Observation start time (MET)	224744064.184000	224741966.38435			
Observation start date	2005-02-14T04:53:20	2005-02-14T04:19:26			
[s] Observation end time (MET)	224754264.184000	224755129.43495			
Observation end date	2005-02-14T07:43:20	2005-02-14T07:58:49			
Read mode	TIMED	TIMED			

2.3 Aspect



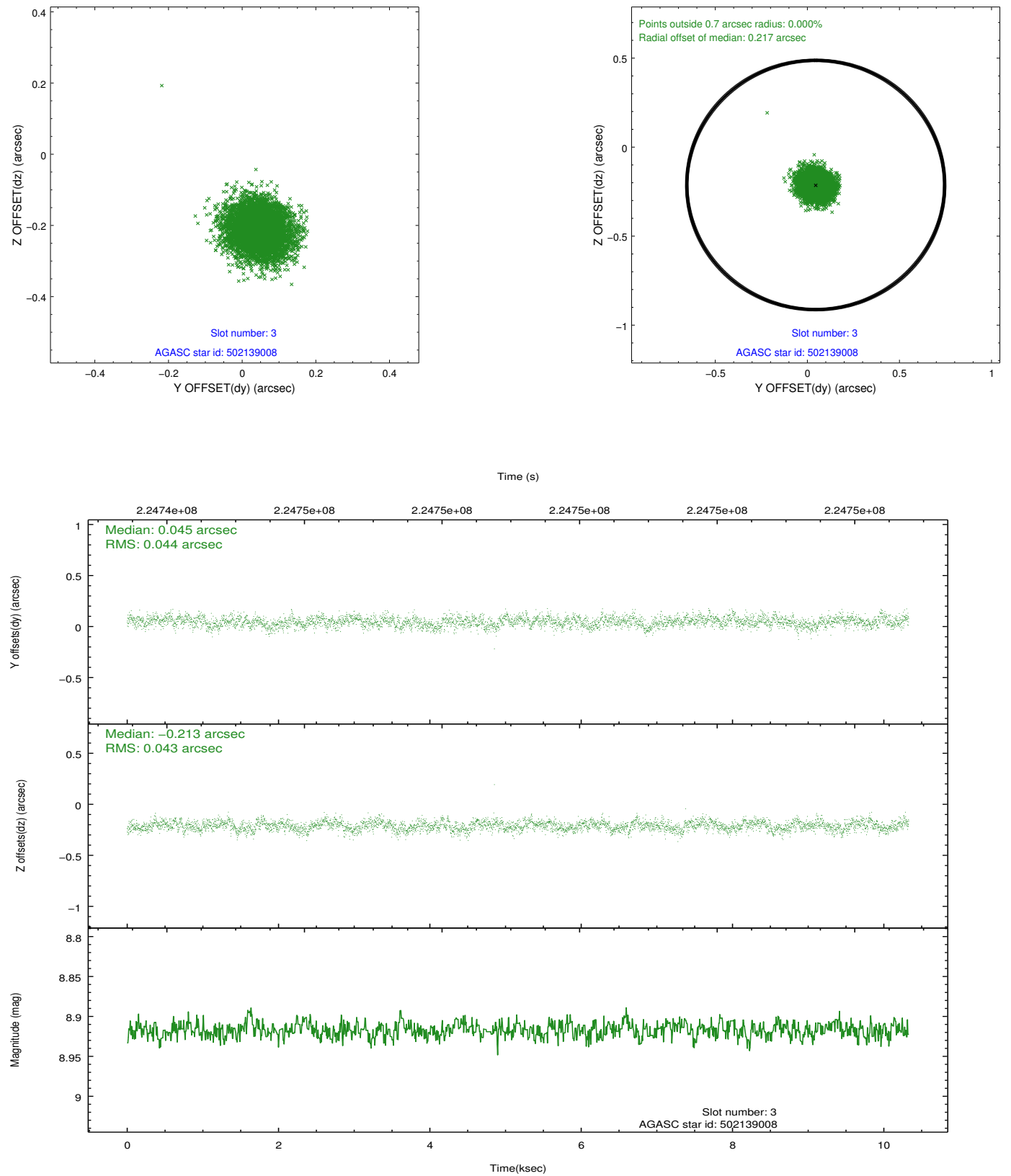


Slot Statistics

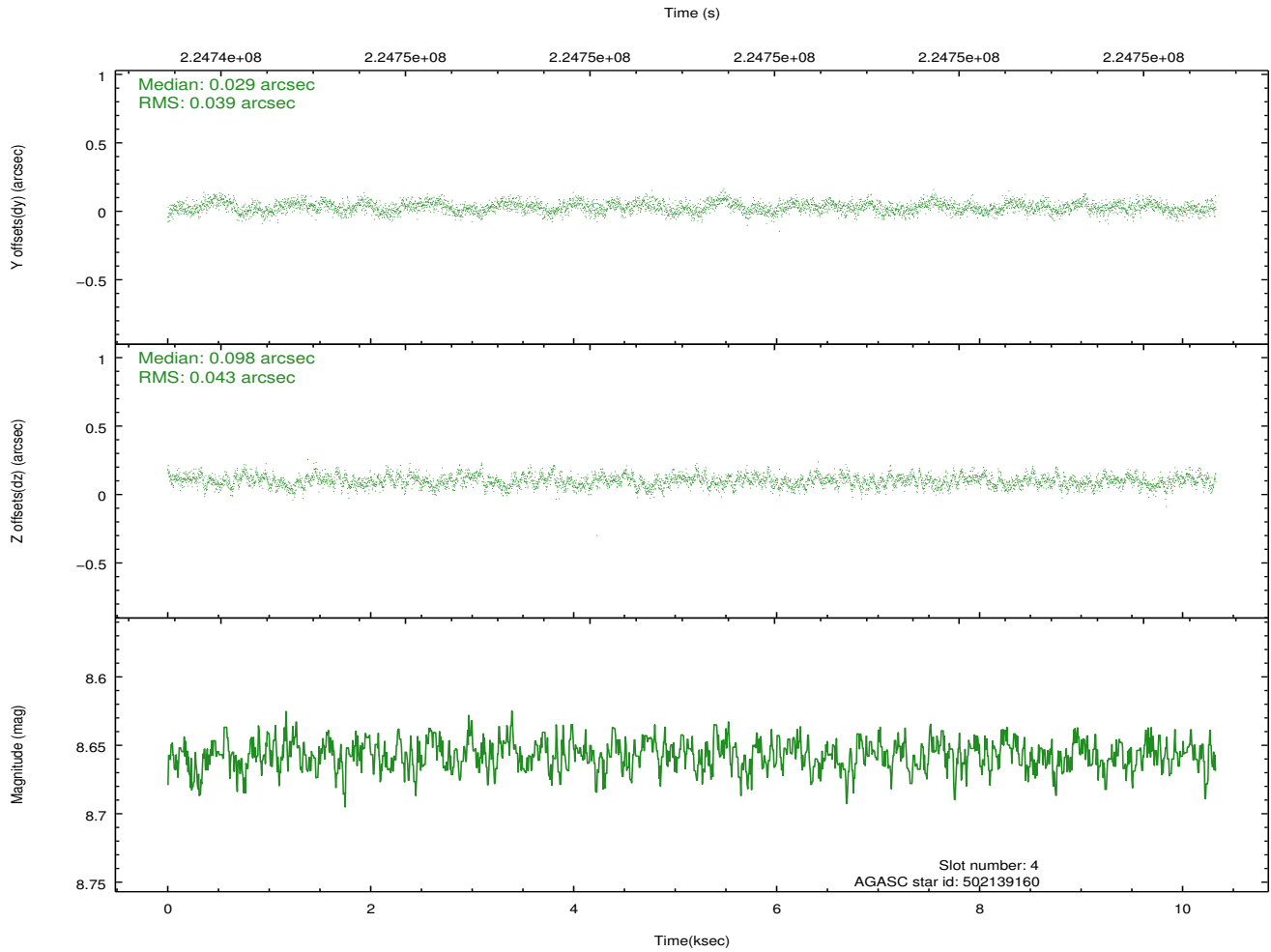
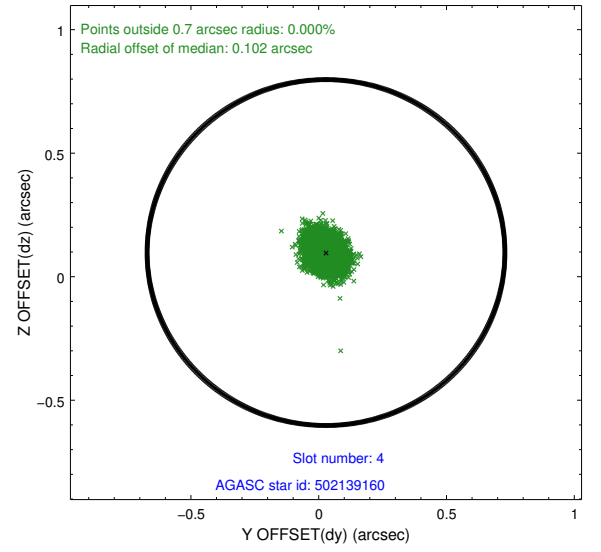
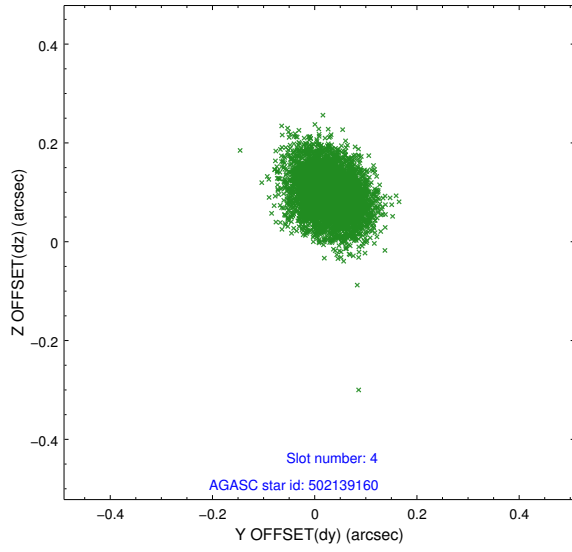
slot	status	used	id	mag	n_pts	med_dy	med_dz	dr1	dr2	ra	dec	mean_y	mean_z
0	FID		ACIS-S-1	7.19	2519	0.038	-0.081	0.019	0.027	0.000000	0.000000	936.45	-1728.15
1	FID		ACIS-S-5	7.24	2517	-0.051	0.022	0.011	0.021	0.000000	0.000000	-1812.33	169.02
2	FID		ACIS-S-6	7.35	2519	-0.009	0.067	0.013	0.021	0.000000	0.000000	401.43	813.57
3	GUIDE	used	502139008	8.92	5035	0.045	-0.213	0.066	0.106	171.461493	58.762354	1495.04	102.19
4	GUIDE	used	502139160	8.66	5038	0.029	0.098	0.062	0.099	171.922858	58.702202	648.35	-167.13
5	GUIDE	used	502140120	9.86	5033	0.071	0.029	0.118	0.188	172.990279	58.650244	-1138.28	-1080.06
6	GUIDE	used	502141424	8.83	5039	-0.134	0.046	0.072	0.114	170.796377	58.588126	2232.98	1284.85
7	GUIDE	used	502143776	8.97	5037	-0.011	0.042	0.068	0.109	172.980797	58.430865	-1551.49	-406.69

2.4 Star Slots

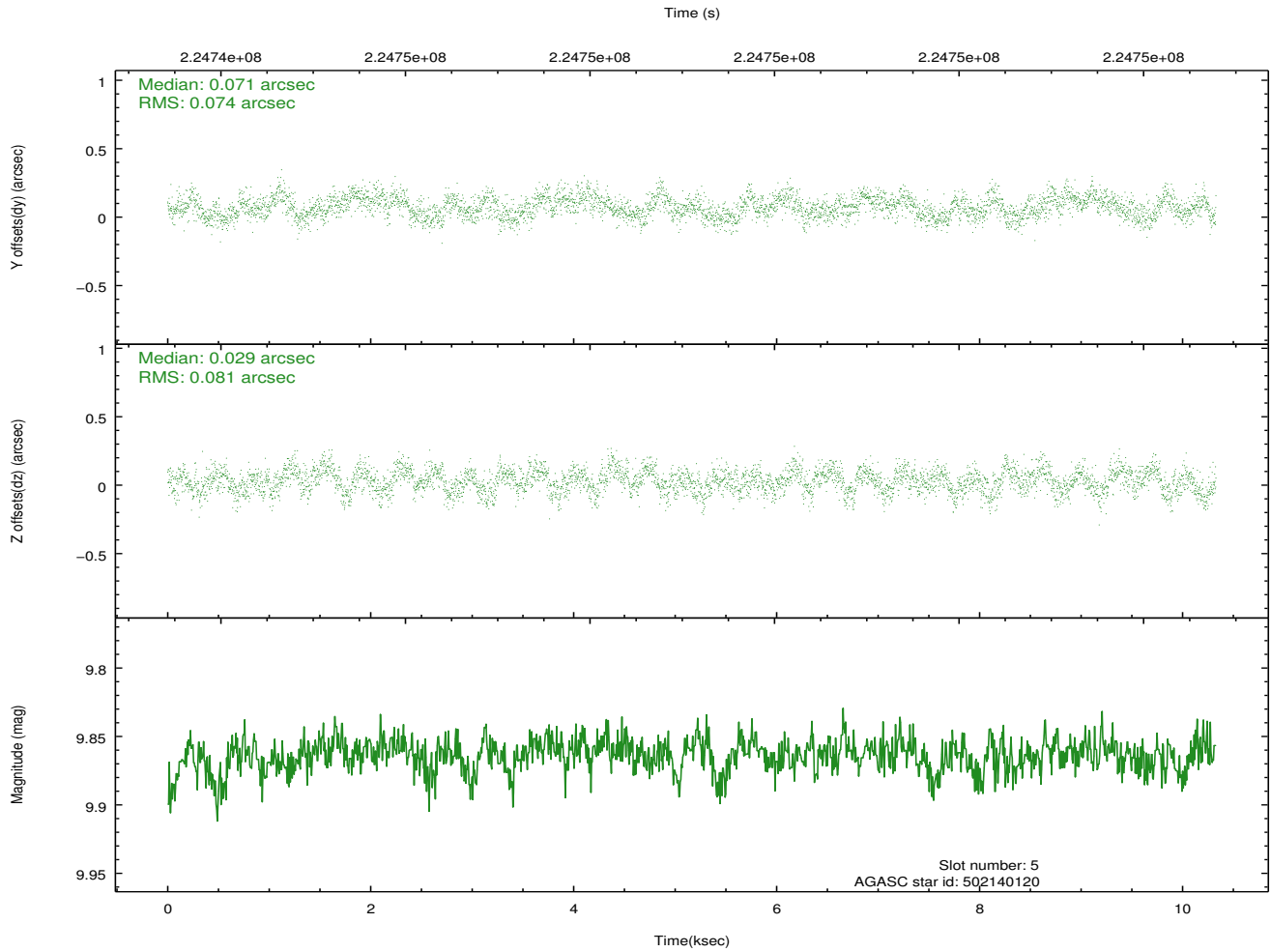
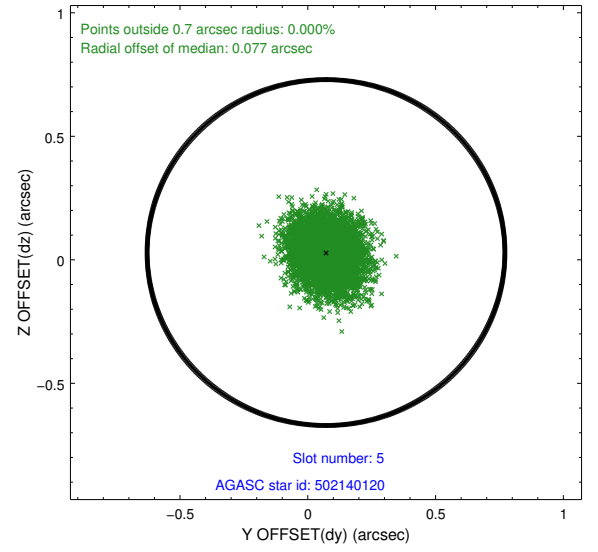
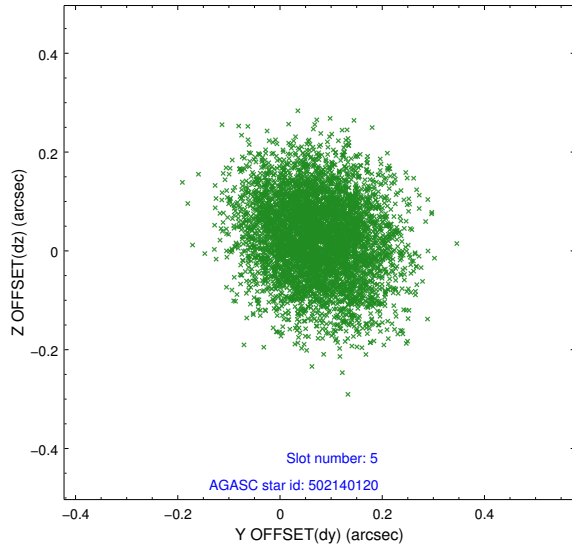
2.4.1 Slot 3



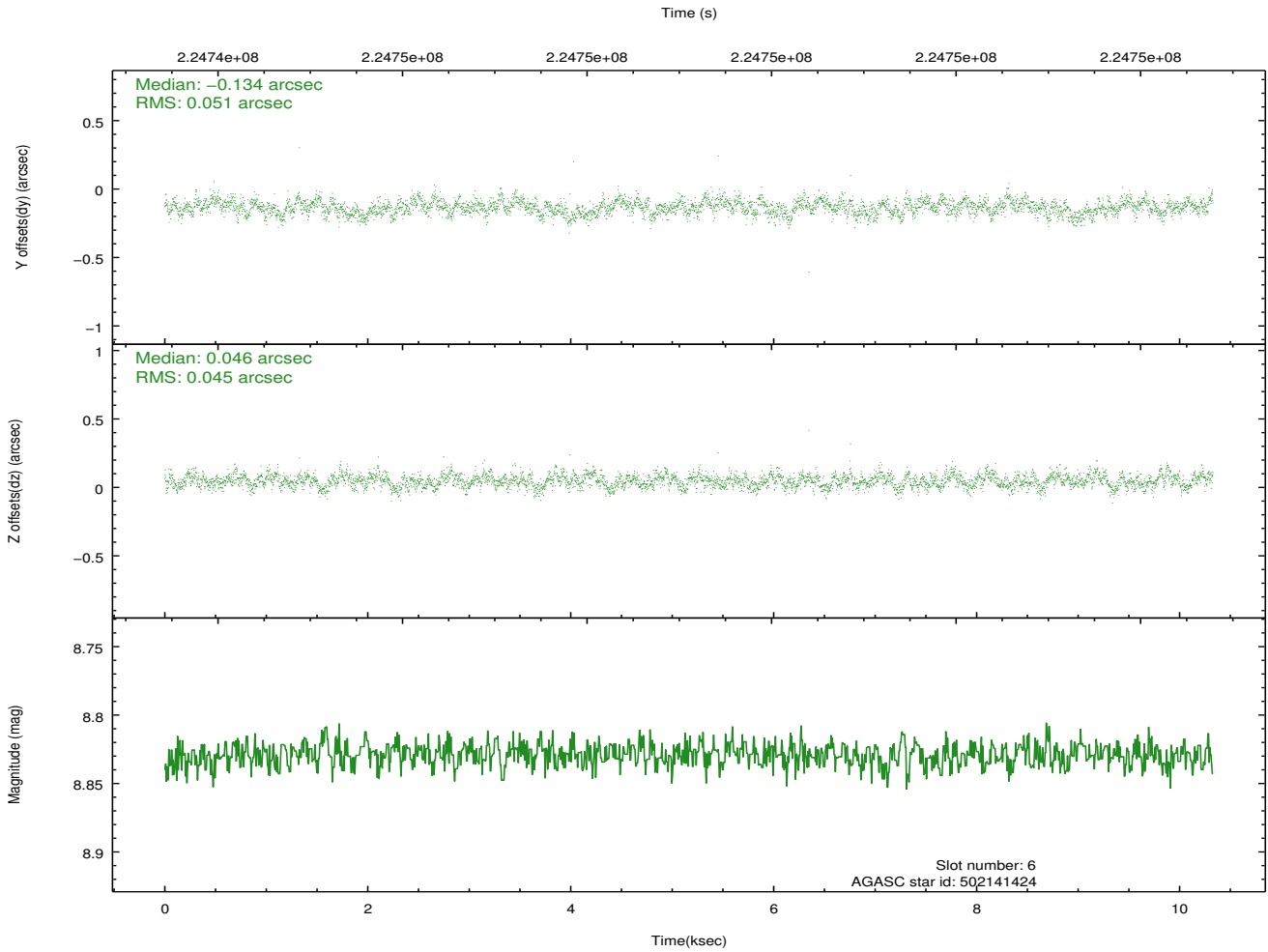
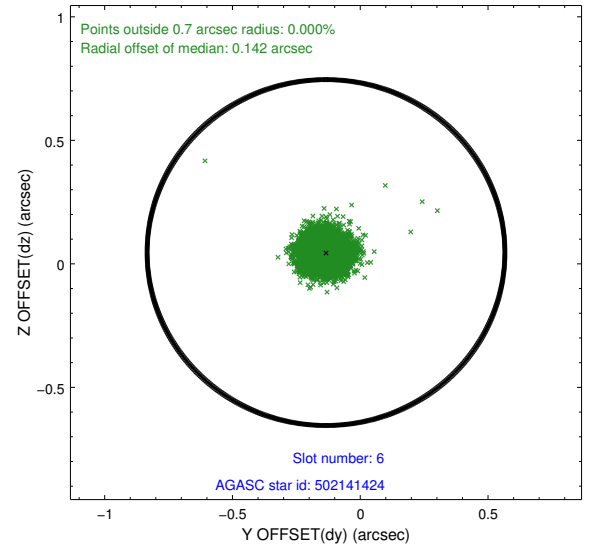
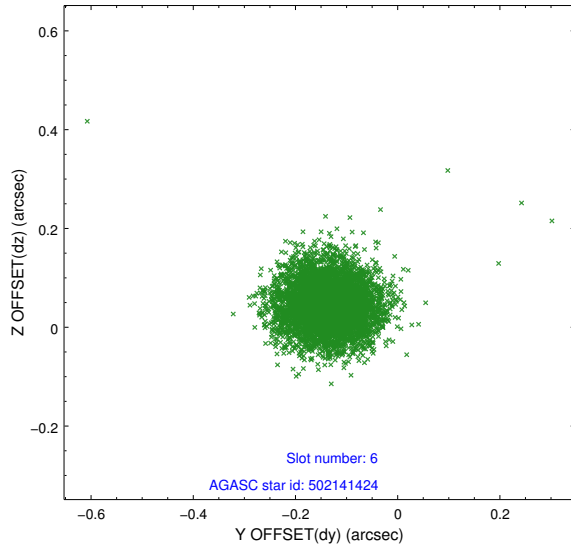
2.4.2 Slot 4



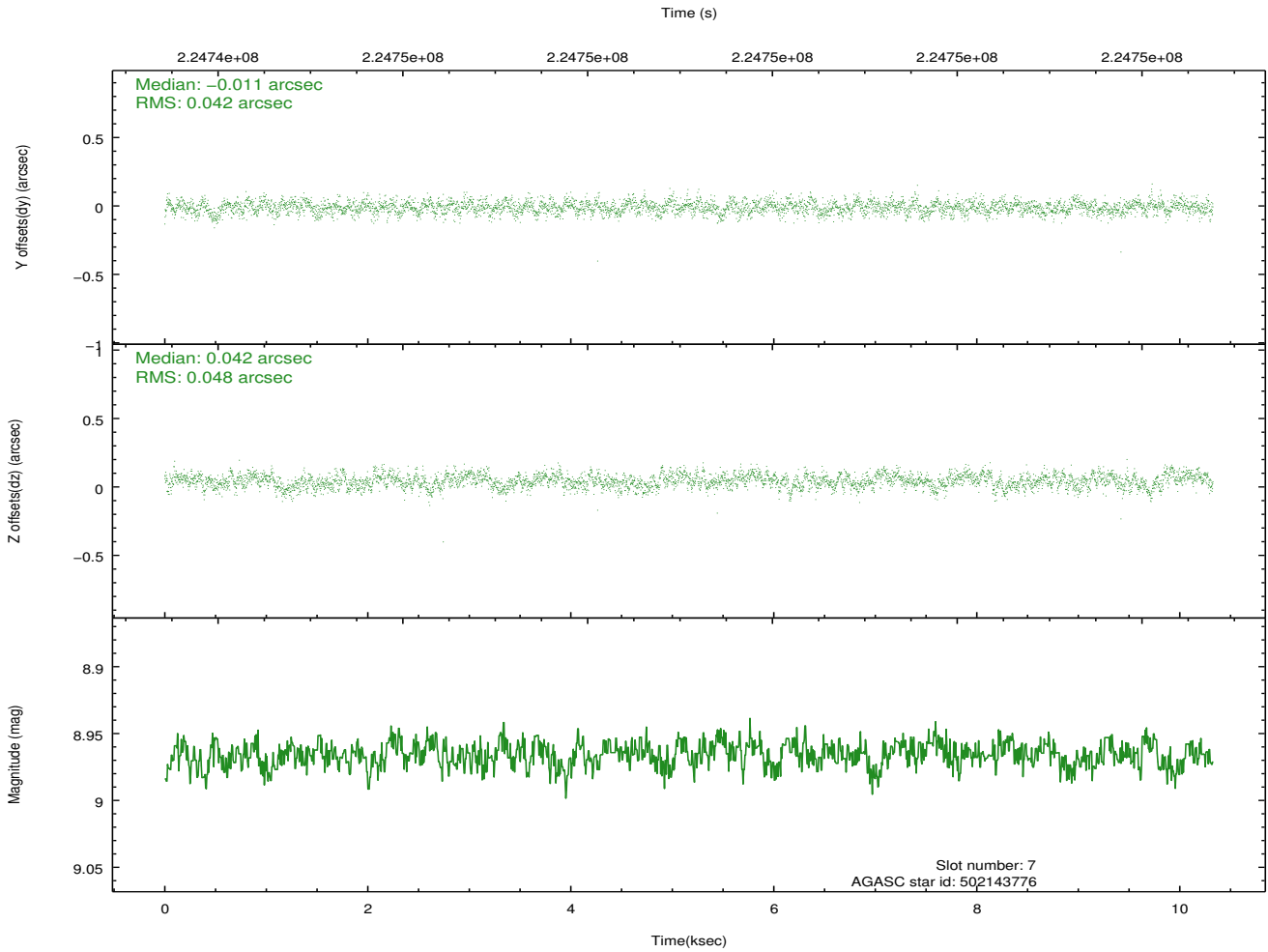
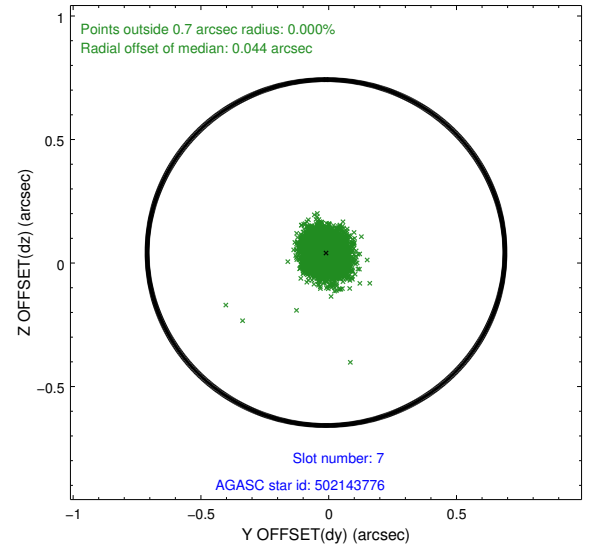
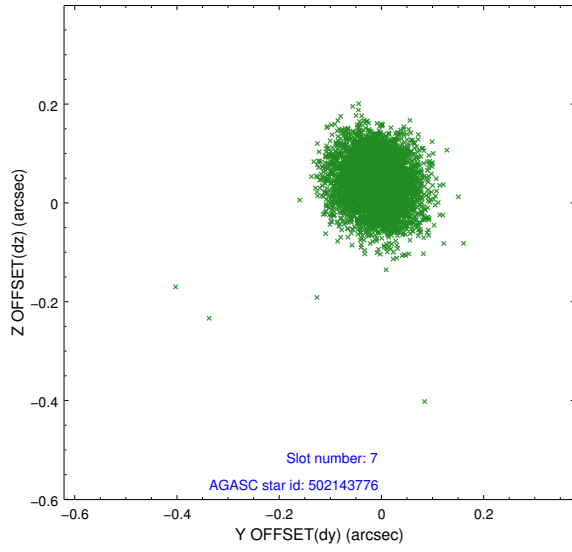
2.4.3 Slot 5



2.4.4 Slot 6

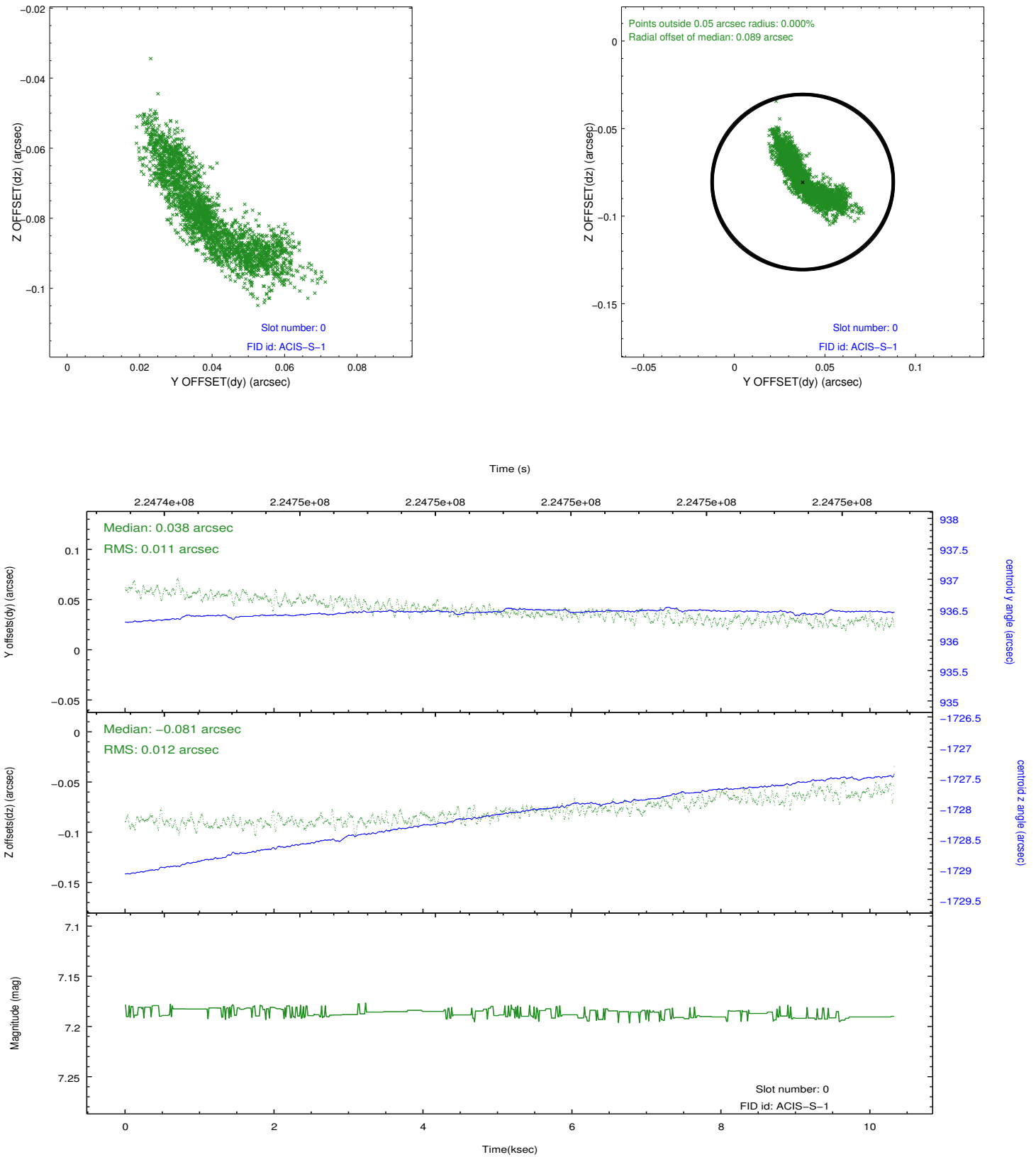


2.4.5 Slot 7

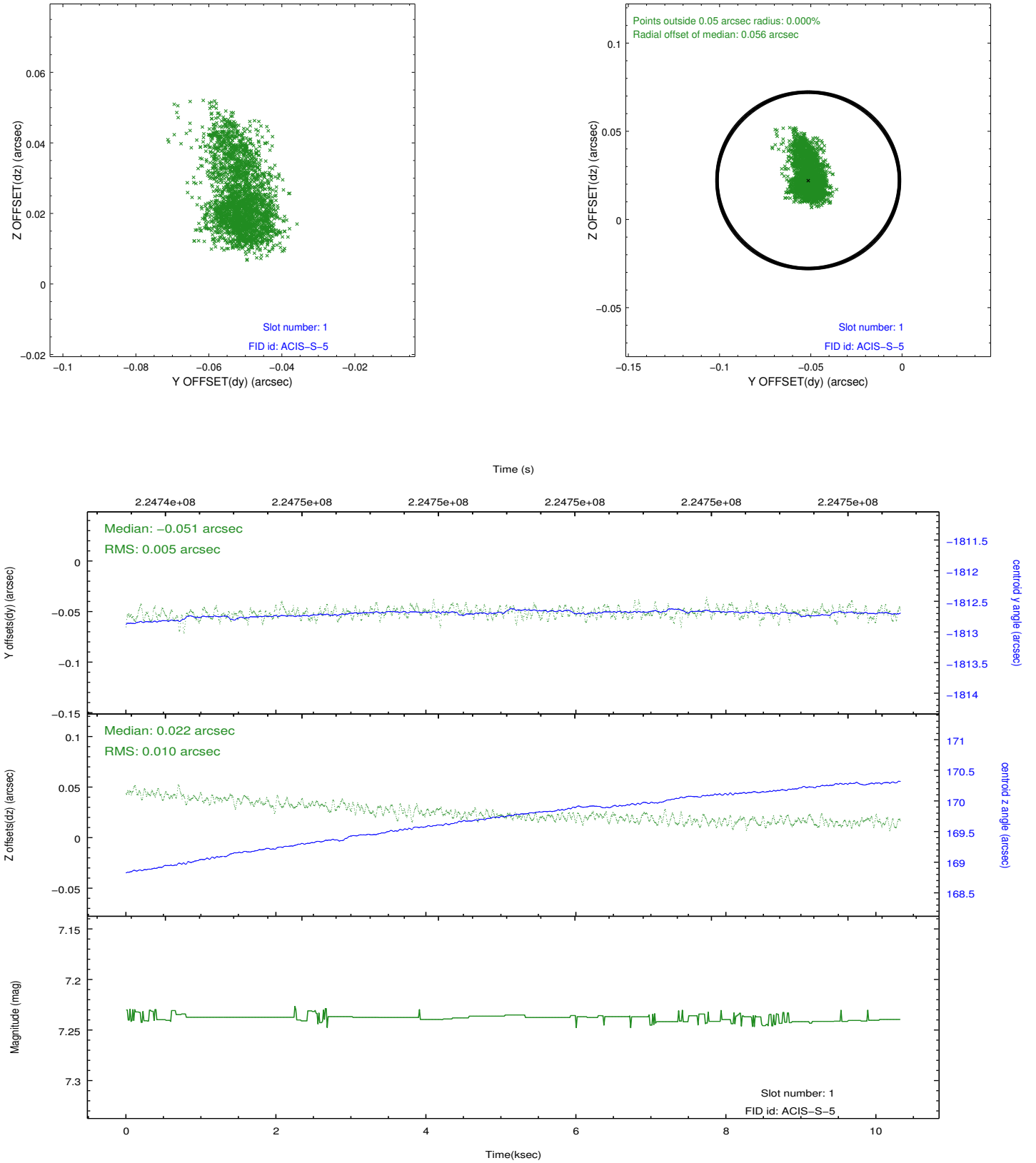


2.5 FID Slots

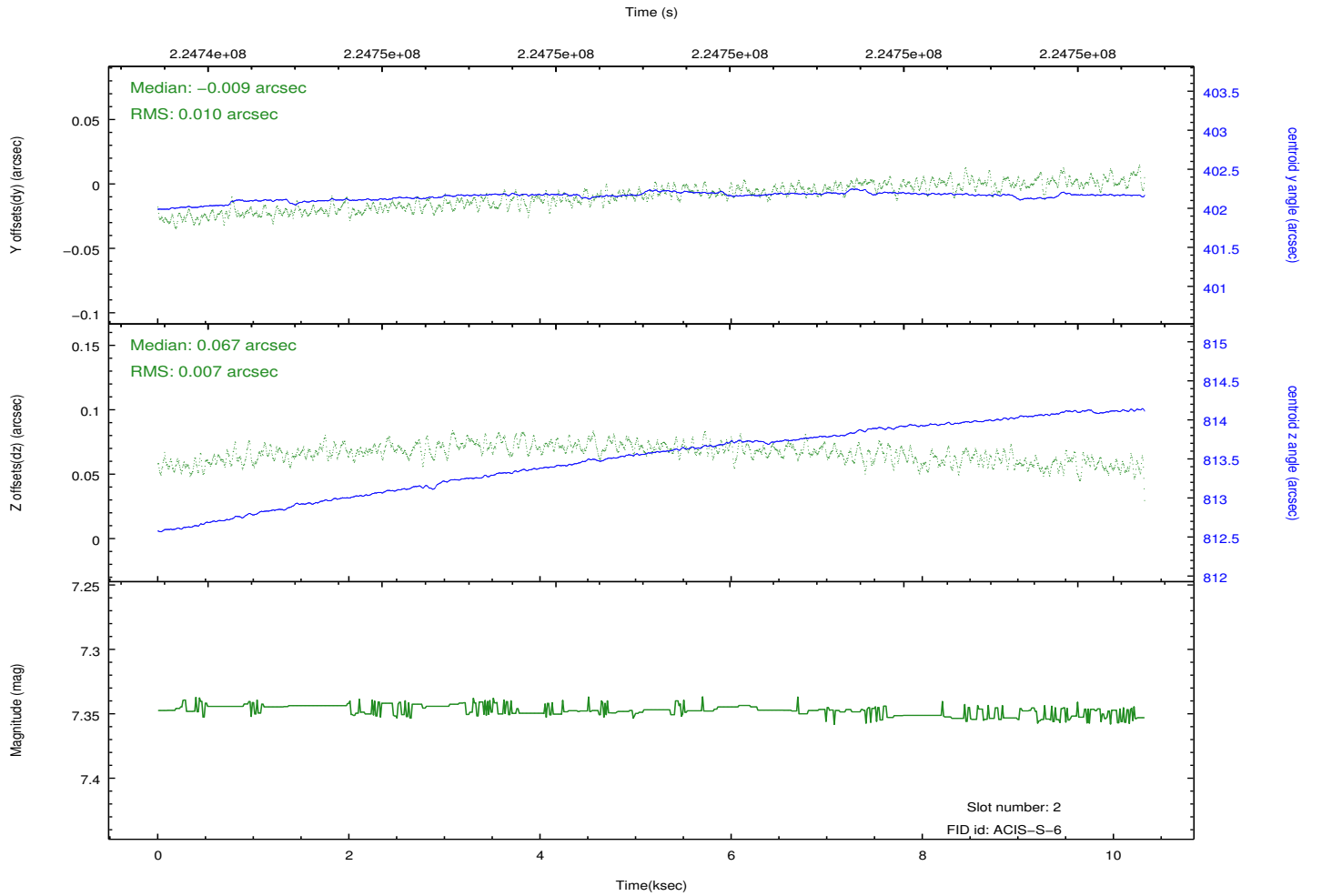
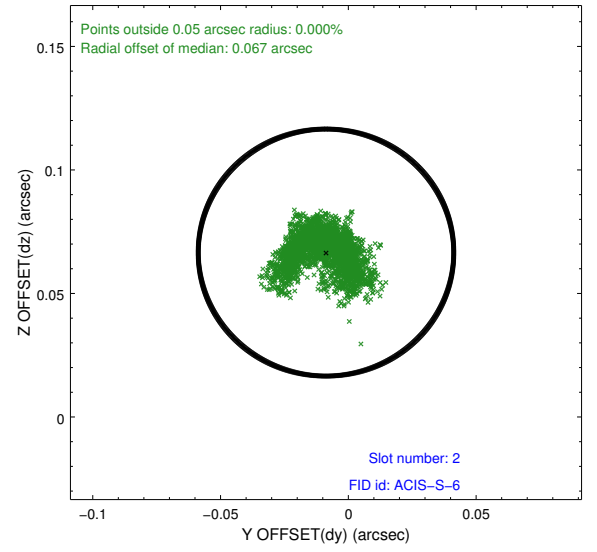
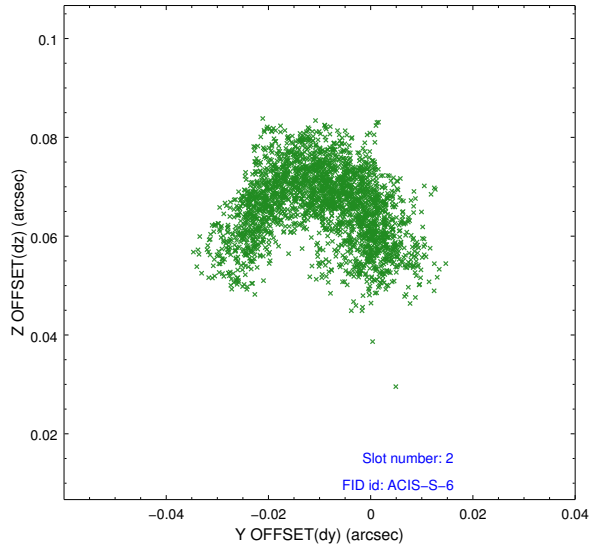
2.5.1 Slot 0



2.5.2 Slot 1



2.5.3 Slot 2



A Summary

A.1 Status

V&V Scientist	Beth Sundheim
V&V Date (YYYY-MM-DD)	2015.07.17
V&V Edition	1
V&V Disposition and Status	OK
V&V Charge Time	10.32319

A.2 Comments

Because an aspect solution is determined in a finite time interval, a small number of events registered within the delta time before the first aspect solution do not have proper sky coordinates. We apply a manual workaround to exclude those events with incorrect sky positions until the complete s/w resolution is obtained.