

# V&V Reference Report

## L2 ASCDS Version : 8.4.5

Observation 62197 - L2 Version 4  
Chandra X-Ray Center

L2 Processing Date : Aug 22 2012

## Contents

<b>1</b>	<b>Front</b>	<b>2</b>
<b>2</b>	<b>OBI</b>	<b>3</b>
2.1	OBI . . . . .	3
2.1.1	Images . . . . .	3
2.1.2	Bias . . . . .	3
2.1.3	Parameters . . . . .	4
2.1.4	Events . . . . .	4
2.2	Compared Parameters . . . . .	5
2.3	Star Slots . . . . .	6
2.4	FID Slots . . . . .	6
<b>A</b>	<b>Summary</b>	<b>7</b>
A.1	Status . . . . .	7
A.2	Comments . . . . .	7

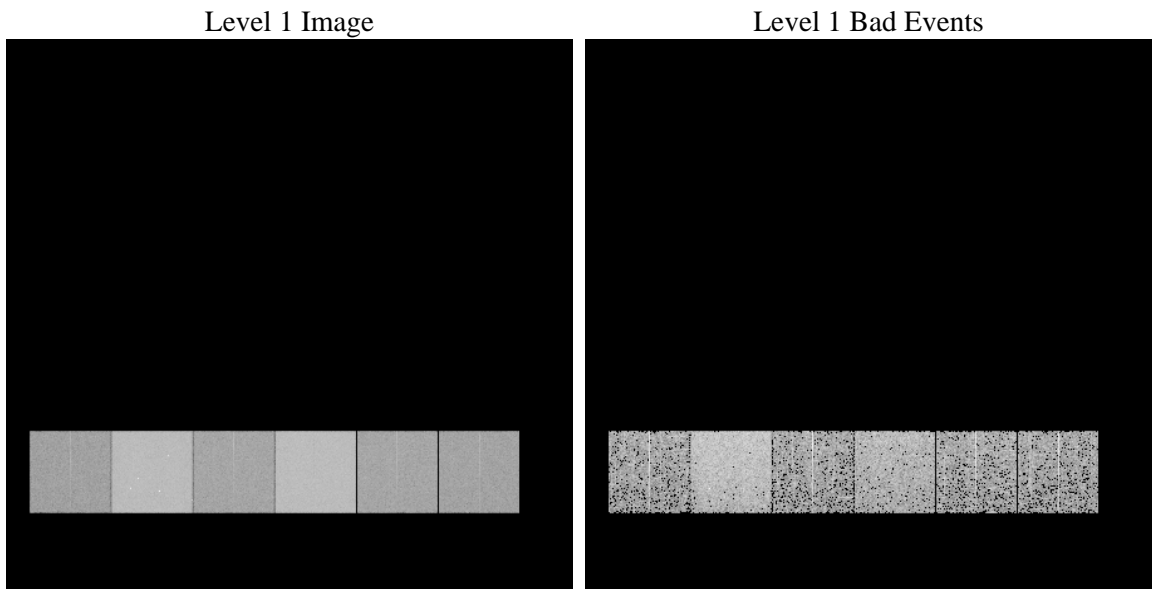
# 1 Front

seq_num	&#160	Sequence number
obs_id	62197	Observation id
title	ACIS-456789 diagnostics	Proposal title
observer	CHANDRA engineering request/realtime commanding	Principal investig
object	&#160	Source name
dtcycle	0	&#160
cycle	P	events from which exps? Prim/Second/Both
ra_targ	0.0	Observer's specified target RA [deg]
dec_targ	0.0	Observer's specified target Dec [deg]
ra_nom	350.69926809585	Nominal RA [deg]
dec_nom	58.87418223593	Nominal Dec [deg]
roll_nom	322.81613502656	Nominal Roll [deg]
revision	4	Processing version of data
ontime	2869.8768522516	Sum of GTIs [s]
livetime	2833.536743516	Livetime [s]
ontime4	1119.8452415615	Sum of GTIs [s]
ontime5	3089.2012612149	Sum of GTIs [s]
ontime6	1255.9278319702	Sum of GTIs [s]
ontime7	2869.8768522516	Sum of GTIs [s]
ontime8	1265.7330020592	Sum of GTIs [s]
ontime9	1194.2250017077	Sum of GTIs [s]
l2events	922638	Number of level 2 events

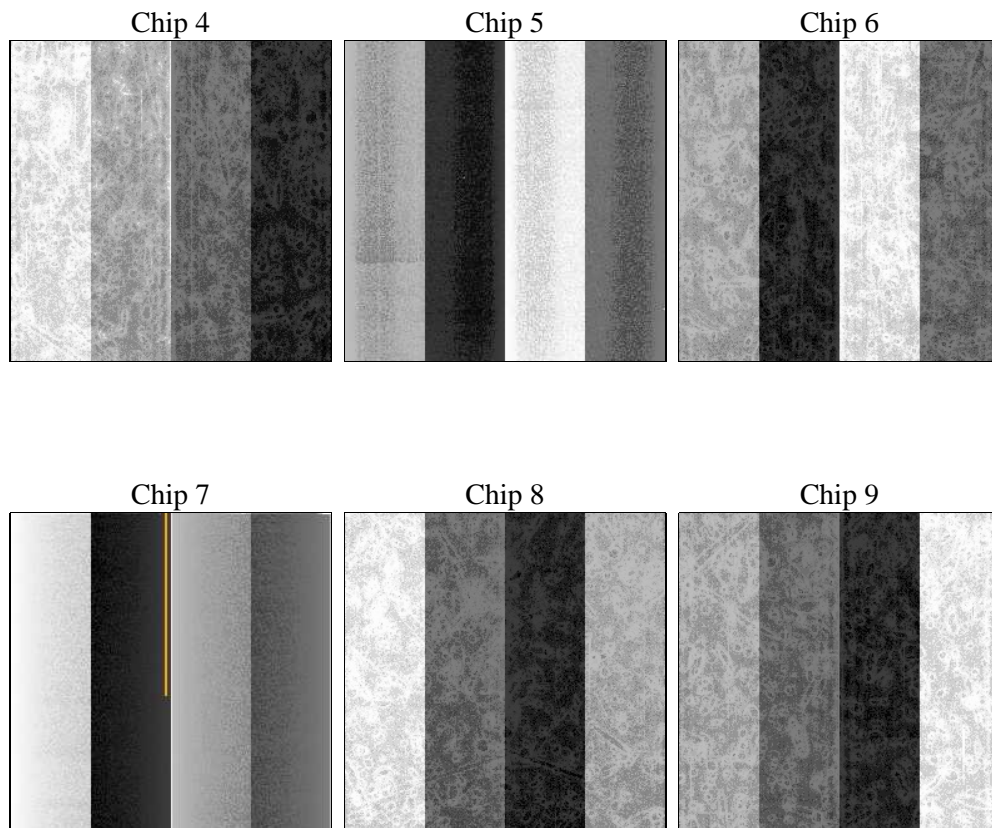
## 2 OBI

### 2.1 OBI

#### 2.1.1 Images



#### 2.1.2 Bias



### 2.1.3 Parameters

obi_num	0	Obi number	sched_exp_time	0.0	[s] Scheduled observation exposure time
ascdsver	8.4.5	Processing system revision	ontime	2869.8768522516	Sum of GTIs [s]
caldsver	4.5.1.1	&#160	ontime4	1119.8452415615	Sum of GTIs [s]
date	2012-08-22T16:13:53	Date and time of file creation	ontime5	3089.2012612149	Sum of GTIs [s]
revision	4	Processing version of data	ontime6	1255.9278319702	Sum of GTIs [s]
			ontime7	2869.8768522516	Sum of GTIs [s]
			ontime8	1265.7330020592	Sum of GTIs [s]
			ontime9	1194.2250017077	Sum of GTIs [s]
			l1events	1063073	Number of level 1 events

### 2.1.4 Events

	ccd 4	ccd 5	ccd 6	ccd 7	ccd 8	ccd 9		ccd 4	ccd 5	ccd 6	ccd 7	ccd 8	ccd 9
level 1 events	110857	278802	131943	287659	132890	120922	grade 0 events	55087	64988	64415	69364	65269	59325
rejected events	13608	27626	13686	18829	14408	13221		49%	23%	48%	24%	49%	49%
rejected %	12%	9%	10%	6%	10%	10%	grade 1 events	377	195	429	189	402	376
								0%	0%	0%	0%	0%	0%
							grade 2 events	17064	86966	20887	59329	21167	19150
								15%	31%	15%	20%	15%	15%
							grade 3 events	6048	16886	7318	27708	7423	6635
								5%	6%	5%	9%	5%	5%
							grade 4 events	5934	16701	7375	27361	7281	6862
								5%	5%	5%	9%	5%	5%
							grade 5 events	917	5579	1009	3964	1077	971
								0%	2%	0%	1%	0%	0%
							grade 6 events	13391	66417	18880	86247	17629	16275
								12%	23%	14%	29%	13%	13%
							grade 7 events	12039	21070	11630	13497	12642	11328
								10%	7%	8%	4%	9%	9%

## 2.2 Compared Parameters

Parameter	Planned	Actual	Parameter	Planned	Actual
Instrument	ACIS	ACIS	Obspar format version number	7	7
Detector	ACIS-456789	ACIS-456789	Obspar file type	PREDICTED	ACTUAL
Grating	NONE	NONE	Obspar update status	NONE	UPDATED
Data mode	FAINT	FAINT	On-chip summing requested	N	N
Observation mode	SECONDARY	SECONDARY	Subarray requested	NONE	NONE
[deg] Pointing RA	0	350.6992680958499	Alternating exposures requested	N	N
[deg] Pointing Dec	0	58.87418223593018	[s] Primary exposure time	3.2	3.2
[deg] Pointing Roll	0.0	322.8161350265635			
[mm] SIM focus pos	-0.684267	-0.6828225247311905			
[mm] SIM defocus	0	0.8505141146731063			
[mm] SIM translation stage pos	-190.132523	250.466033080201			
[mm] SIM translation stage offset	0	-0.01005468664627074			
[s] Observation start time (MET)	65601458.920781	65601458.15226			
Observation start date	2000-01-30T06:37:39	2000-01-30T06:37:38			
[s] Observation end time (MET)	65608758.971047	65608758.202526			
Observation end date	2000-01-30T08:39:19	2000-01-30T08:39:18			
Read mode	TIMED	TIMED			

## **2.3 Star Slots**

## **2.4 FID Slots**

## A Summary

### A.1 Status

V&V Scientist	Beth Sundheim
V&V Date (YYYY-MM-DD)	2012.08.22
V&V Edition	1
V&V Disposition and Status	OK
V&V Charge Time	2.8698768522516

### A.2 Comments