

# V&V Reference Report

## L2 ASCDS Version : 8.4.5

Observation 62157 - L2 Version 4  
Chandra X-Ray Center

L2 Processing Date : Aug 23 2012

## Contents

<b>1</b>	<b>Front</b>	<b>2</b>
<b>2</b>	<b>OBI</b>	<b>3</b>
2.1	OBI . . . . .	3
2.1.1	Images . . . . .	3
2.1.2	Bias . . . . .	3
2.1.3	Parameters . . . . .	4
2.1.4	Events . . . . .	4
2.2	Compared Parameters . . . . .	5
2.3	Star Slots . . . . .	6
2.4	FID Slots . . . . .	6
<b>A</b>	<b>Summary</b>	<b>7</b>
A.1	Status . . . . .	7
A.2	Comments . . . . .	7

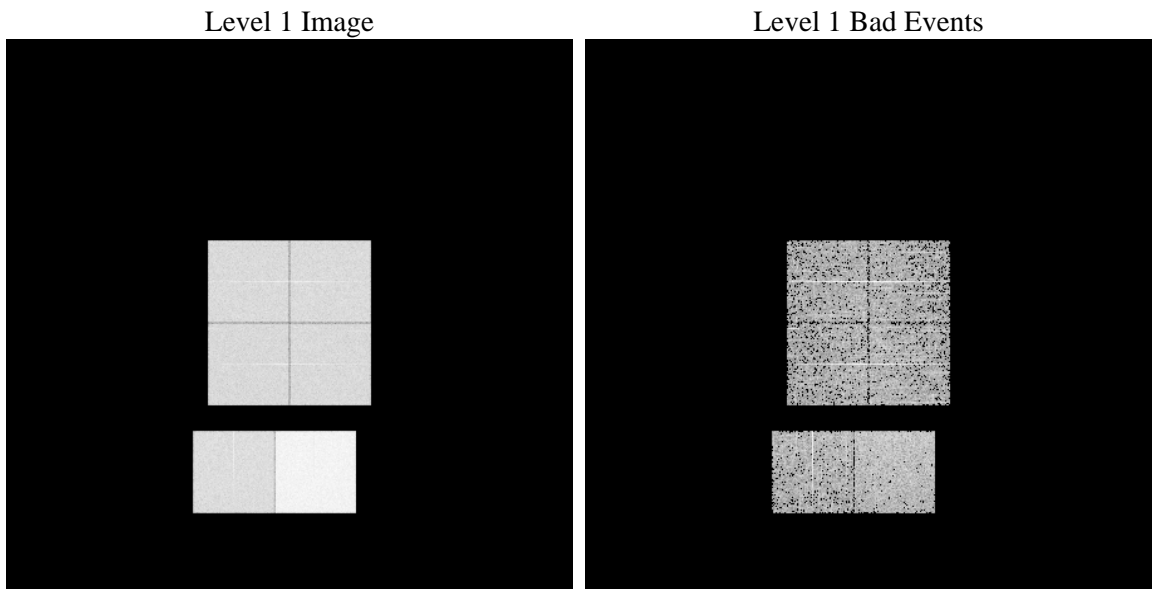
# 1 Front

seq_num	&#160	Sequence number
obs_id	62157	Observation id
title	ACIS-012367 diagnostics	Proposal title
observer	CHANDRA engineering request/realtime commanding	Principal investig
object	&#160	Source name
dtcycle	0	&#160
cycle	P	events from which exps? Prim/Second/Both
ra_targ	0.0	Observer's specified target RA [deg]
dec_targ	0.0	Observer's specified target Dec [deg]
ra_nom	119.98563208579	Nominal RA [deg]
dec_nom	54.973287522104	Nominal Dec [deg]
roll_nom	225.6046377793	Nominal Roll [deg]
revision	4	Processing version of data
ontime	3478.605288744	Sum of GTIs [s]
livetime	3434.5570940133	Livetime [s]
ontime0	1448.7435401678	Sum of GTIs [s]
ontime1	1474.6717204899	Sum of GTIs [s]
ontime2	1374.1996203661	Sum of GTIs [s]
ontime3	1381.6719254553	Sum of GTIs [s]
ontime6	1513.5642502457	Sum of GTIs [s]
ontime7	3478.605288744	Sum of GTIs [s]
l2events	920683	Number of level 2 events

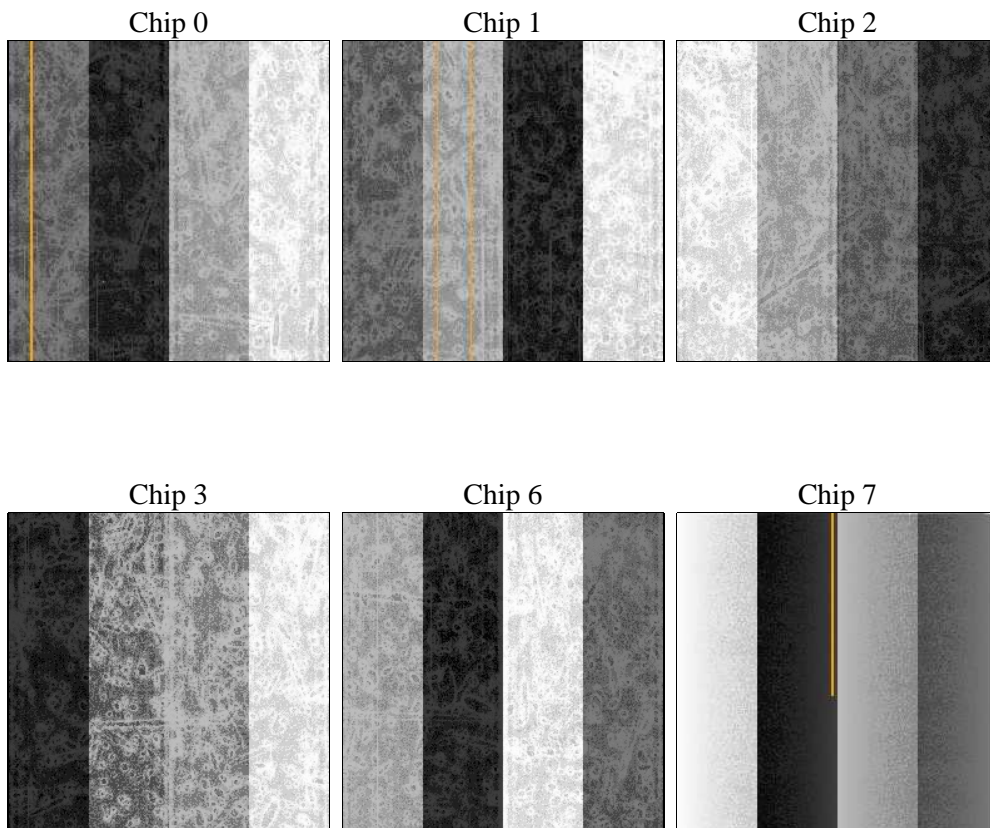
## 2 OBI

### 2.1 OBI

#### 2.1.1 Images



#### 2.1.2 Bias



### 2.1.3 Parameters

obi_num	0	Obi number	sched_exp_time	0.0	[s] Scheduled observation exposure time
ascdsver	8.4.5	Processing system revision	ontime	3478.605288744	Sum of GTIs [s]
caldsver	4.5.1.1	&#160	ontime0	1448.7435401678	Sum of GTIs [s]
date	2012-08-23T14:05:09	Date and time of file creation	ontime1	1474.6717204899	Sum of GTIs [s]
revision	4	Processing version of data	ontime2	1374.1996203661	Sum of GTIs [s]
			ontime3	1381.6719254553	Sum of GTIs [s]
			ontime6	1513.5642502457	Sum of GTIs [s]
			ontime7	3478.605288744	Sum of GTIs [s]
			l1events	1050680	Number of level 1 events

### 2.1.4 Events

	ccd 0	ccd 1	ccd 2	ccd 3	ccd 6	ccd 7		ccd 0	ccd 1	ccd 2	ccd 3	ccd 6	ccd 7
level 1 events	140606	143118	134747	137591	155495	339123	grade 0 events	70093	71639	67573	68842	76405	82598
rejected events	13849	13841	13532	14993	15478	20206		49%	50%	50%	50%	49%	24%
rejected %	9%	9%	10%	10%	9%	5%	grade 1 events	431	423	431	425	451	230
								0%	0%	0%	0%	0%	0%
							grade 2 events	22257	22473	21153	21410	24196	71344
								15%	15%	15%	15%	15%	21%
							grade 3 events	8148	8123	7598	7960	8736	32962
								5%	5%	5%	5%	5%	9%
							grade 4 events	7948	8279	7616	7824	8635	32776
								5%	5%	5%	5%	5%	9%
							grade 5 events	1039	970	1001	1026	1149	4623
								0%	0%	0%	0%	0%	1%
							grade 6 events	18311	18763	17275	17007	22045	99756
								13%	13%	12%	12%	14%	29%
							grade 7 events	12379	12448	12100	13097	13878	14834
								8%	8%	8%	9%	8%	4%

## 2.2 Compared Parameters

Parameter	Planned	Actual	Parameter	Planned	Actual
Instrument	ACIS	ACIS	Obspar format version number	7	7
Detector	ACIS-012367	ACIS-012367	Obspar file type	PREDICTED	ACTUAL
Grating	NONE	NONE	Obspar update status	NONE	UPDATED
Data mode	FAINT	FAINT	On-chip summing requested	N	N
Observation mode	SECONDARY	SECONDARY	Subarray requested	NONE	NONE
[deg] Pointing RA	0	119.9856320857933	Alternating exposures requested	N	N
[deg] Pointing Dec	0	54.97328752210413	[s] Primary exposure time	0.000000	3.2
[deg] Pointing Roll	0.0	225.6046377793033			
[mm] SIM focus pos	-0.782348	-0.6828225247311905			
[mm] SIM defocus	0	0.8505141146731063			
[mm] SIM translation stage pos	-233.592463	250.466033080201			
[mm] SIM translation stage offset	0	-0.01005468664627074			
[s] Observation start time (MET)	67666948.84999999	67666948.08143			
Observation start date	2000-02-23T04:22:29	2000-02-23T04:22:28			
[s] Observation end time (MET)	67674248.90000001	67674248.131697			
Observation end date	2000-02-23T06:24:09	2000-02-23T06:24:08			
Read mode	TIMED	TIMED			

## **2.3 Star Slots**

## **2.4 FID Slots**

## A Summary

### A.1 Status

V&V Scientist	Jen Lauer
V&V Date (YYYY-MM-DD)	2012.08.23
V&V Edition	1
V&V Disposition and Status	OK
V&V Charge Time	3.478605288744

### A.2 Comments