

# V&V Reference Report

## L2 ASCDS Version : 8.4.5

Observation 62057 - L2 Version 5  
Chandra X-Ray Center

L2 Processing Date : Aug 27 2012

## Contents

<b>1</b>	<b>Front</b>	<b>2</b>
<b>2</b>	<b>OBI</b>	<b>3</b>
2.1	OBI . . . . .	3
2.1.1	Images . . . . .	3
2.1.2	Bias . . . . .	3
2.1.3	Parameters . . . . .	4
2.1.4	Events . . . . .	4
2.2	Compared Parameters . . . . .	5
2.3	Star Slots . . . . .	6
2.4	FID Slots . . . . .	6
<b>A</b>	<b>Summary</b>	<b>7</b>
A.1	Status . . . . .	7
A.2	Comments . . . . .	7

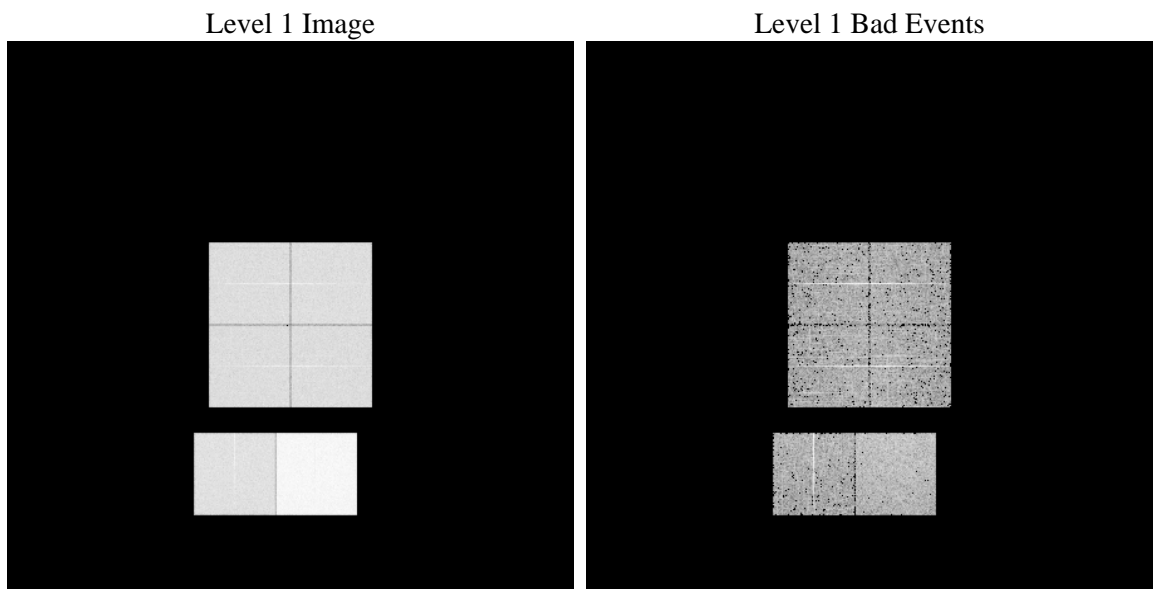
# 1 Front

seq_num	&#160	Sequence number
obs_id	62057	Observation id
title	ACIS-012367 diagnostics	Proposal title
observer	CHANDRA engineering request/realtime commanding	Principal investig
object	&#160	Source name
dtcycle	0	&#160
cycle	P	events from which exps? Prim/Second/Both
ra_targ	0.0	Observer's specified target RA [deg]
dec_targ	0.0	Observer's specified target Dec [deg]
ra_nom	12.381991481252	Nominal RA [deg]
dec_nom	-60.31859640101	Nominal Dec [deg]
roll_nom	144.83770465413	Nominal Roll [deg]
revision	5	Processing version of data
ontime	5373.0662814081	Sum of GTIs [s]
livetime	5305.0292808808	Livetime [s]
ontime0	2199.1337676495	Sum of GTIs [s]
ontime1	2242.2568369955	Sum of GTIs [s]
ontime2	2114.9488776475	Sum of GTIs [s]
ontime3	2105.0616574883	Sum of GTIs [s]
ontime6	2388.1034272611	Sum of GTIs [s]
ontime7	5373.0662814081	Sum of GTIs [s]
l2events	1340725	Number of level 2 events

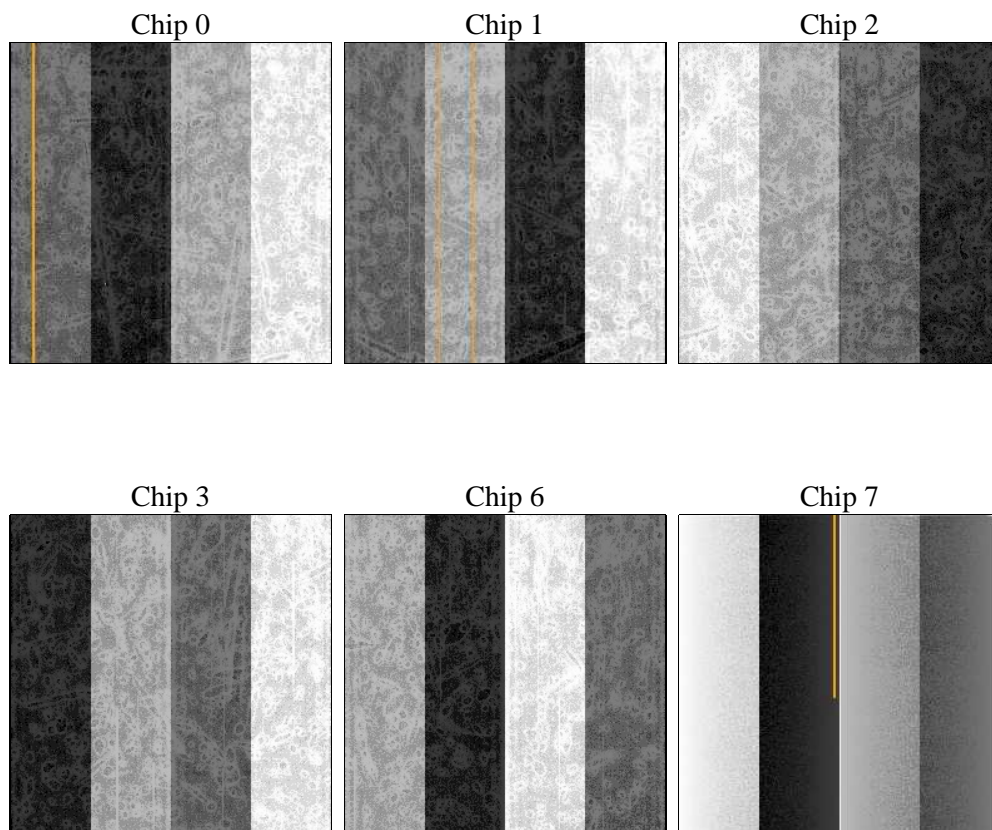
## 2 OBI

### 2.1 OBI

#### 2.1.1 Images



#### 2.1.2 Bias



### 2.1.3 Parameters

obi_num	0	Obi number	sched_exp_time	0.0	[s] Scheduled observation exposure time
ascdsver	8.4.5	Processing system revision	ontime	5373.0662814081	Sum of GTIs [s]
caldsver	4.5.1.1	&#160	ontime0	2199.1337676495	Sum of GTIs [s]
date	2012-08-27T19:34:08	Date and time of file creation	ontime1	2242.2568369955	Sum of GTIs [s]
revision	5	Processing version of data	ontime2	2114.9488776475	Sum of GTIs [s]
			ontime3	2105.0616574883	Sum of GTIs [s]
			ontime6	2388.1034272611	Sum of GTIs [s]
			ontime7	5373.0662814081	Sum of GTIs [s]
			l1events	1530680	Number of level 1 events

### 2.1.4 Events

	ccd 0	ccd 1	ccd 2	ccd 3	ccd 6	ccd 7		ccd 0	ccd 1	ccd 2	ccd 3	ccd 6	ccd 7
level 1 events	202319	207549	198222	199391	230402	492797	grade 0 events	100636	103911	98830	99458	114004	119113
rejected events	20117	20299	20814	21576	21441	30337		49%	50%	49%	49%	49%	24%
rejected %	9%	9%	10%	10%	9%	6%	grade 1 events	647	637	586	556	625	322
								0%	0%	0%	0%	0%	0%
							grade 2 events	32049	33068	30991	31021	36568	102347
								15%	15%	15%	15%	15%	20%
							grade 3 events	11632	11854	11228	11351	12805	47736
								5%	5%	5%	5%	5%	9%
							grade 4 events	11658	11967	11157	11414	13126	47078
								5%	5%	5%	5%	5%	9%
							grade 5 events	1493	1514	1439	1459	1745	6758
								0%	0%	0%	0%	0%	1%
							grade 6 events	26609	27478	25466	25002	33159	147439
								13%	13%	12%	12%	14%	29%
							grade 7 events	17595	17120	18525	19130	18370	22004
								8%	8%	9%	9%	7%	4%

## 2.2 Compared Parameters

Parameter	Planned	Actual	Parameter	Planned	Actual
Instrument	ACIS	ACIS	Obspar format version number	7	7
Detector	ACIS-012367	ACIS-012367	Obspar file type	PREDICTED	ACTUAL
Grating	NONE	NONE	Obspar update status	NONE	UPDATED
Data mode	FAINT	FAINT	On-chip summing requested	N	N
Observation mode	SECONDARY	SECONDARY	Subarray requested	NONE	NONE
[deg] Pointing RA	0	12.38199148125185	Alternating exposures requested	N	N
[deg] Pointing Dec	0	-60.31859640100956	[s] Primary exposure time	0.000000	3.2
[deg] Pointing Roll	0.0	144.83770465413			
[mm] SIM focus pos	-0.782348	-0.7809083437167272			
[mm] SIM defocus	0	0.7524282956875696			
[mm] SIM translation stage pos	-233.592463	250.466033080201			
[mm] SIM translation stage offset	0	-0.01005468664627074			
[s] Observation start time (MET)	74511765.851	74511765.082031			
Observation start date	2000-05-12T09:42:46	2000-05-12T09:42:45			
[s] Observation end time (MET)	74522296.70100001	74522295.932418			
Observation end date	2000-05-12T12:38:17	2000-05-12T12:38:15			
Read mode	TIMED	TIMED			

## 2.3 Star Slots

## 2.4 FID Slots

## A Summary

### A.1 Status

V&V Scientist	Jen Lauer
V&V Date (YYYY-MM-DD)	2012.08.30
V&V Edition	1
V&V Disposition and Status	OK
V&V Charge Time	5.3730662814081

### A.2 Comments