

# V&V Reference Report

## L2 ASCDS Version : 7.6.10

Observation 61997 - L2 Version 001  
Chandra X-Ray Center

L2 Processing Date : May 30 2007

## Contents

<b>1</b>	<b>Front</b>	<b>2</b>
<b>2</b>	<b>OBI</b>	<b>3</b>
2.1	OBI . . . . .	3
2.1.1	Images . . . . .	3
2.1.2	Bias . . . . .	3
2.1.3	Parameters . . . . .	4
2.1.4	Events . . . . .	4
2.2	Compared Parameters . . . . .	5
2.3	Star Slots . . . . .	6
2.4	FID Slots . . . . .	6
<b>A</b>	<b>Summary</b>	<b>7</b>
A.1	Status . . . . .	7
A.2	Comments . . . . .	7

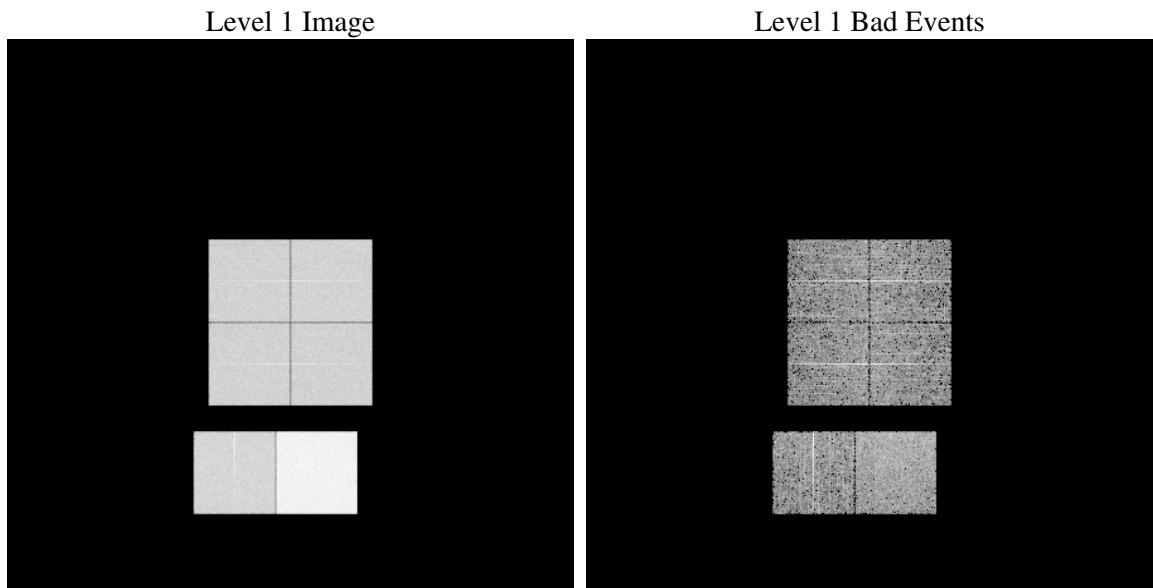
# 1 Front

seq_num	&#160
obs_id	61997
title	ACIS-012367 diagnostics
observer	CHANDRA engineering request/realtime commanding
object	&#160
dtcycle	0
cycle	P
ra_targ	0.0
dec_targ	0.0
ra_nom	145.41417843864
dec_nom	-60.125684969841
roll_nom	211.03473104316
revision	4
ontime	5567.4921057373
livetime	5496.9931683532
ontime0	2375.1466226131
ontime1	2430.2853723615
ontime2	2320.1310825944
ontime3	2303.7616129667
ontime6	2514.6342428923
ontime7	5567.4921057373
l2events	1368896

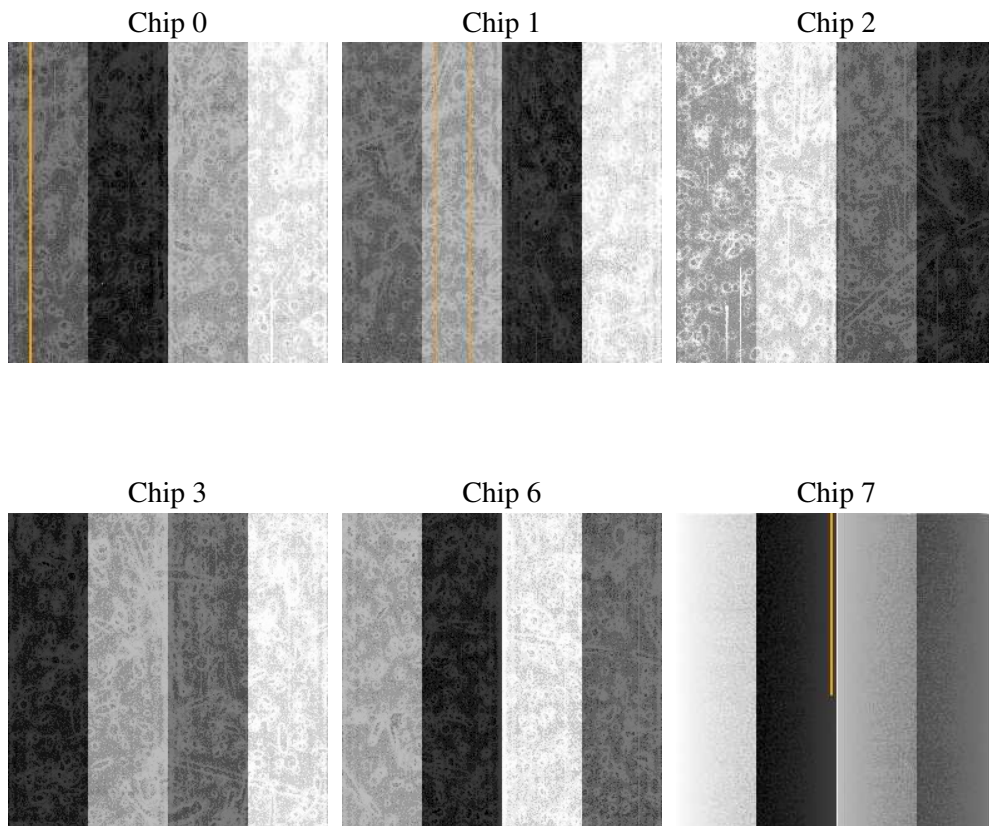
## 2 OBI

### 2.1 OBI

#### 2.1.1 Images



#### 2.1.2 Bias



### 2.1.3 Parameters

obi_num	0
ascdsver	7.6.10
caldbver	3.4.0
date	2007-05-30T23:57:37
revision	4

sched_exp_time	0.0
ontime	5567.4921057373
ontime0	2375.1466226131
ontime1	2430.2853723615
ontime2	2320.1310825944
ontime3	2303.7616129667
ontime6	2514.6342428923
ontime7	5567.4921057373
l1events	1552824

### 2.1.4 Events

	ccd 0	ccd 1	ccd 2	ccd 3	ccd 6	ccd 7
level 1 events	208058	213961	206896	205721	232639	485549
rejected events	18977	19955	19310	19718	21020	27599
rejected %	9%	9%	9%	9%	9%	5%

	ccd 0	ccd 1	ccd 2	ccd 3	ccd 6	ccd 7
grade 0 events	104549	107179	104477	104131	115774	118110
	50%	50%	50%	50%	49%	24%
grade 1 events	607	550	575	561	575	308
	0%	0%	0%	0%	0%	0%
grade 2 events	33187	33828	32842	32428	36373	101219
	15%	15%	15%	15%	15%	20%
grade 3 events	12009	12426	11906	11710	12978	46883
	5%	5%	5%	5%	5%	9%
grade 4 events	11935	12366	11709	11767	13084	46914
	5%	5%	5%	5%	5%	9%
grade 5 events	1400	1505	1431	1438	1653	6332
	0%	0%	0%	0%	0%	1%
grade 6 events	27401	28207	26652	25967	33410	144824
	13%	13%	12%	12%	14%	29%
grade 7 events	16970	17900	17304	17719	18792	20959
	8%	8%	8%	8%	8%	4%

## 2.2 Compared Parameters

Parameter	Planned	Actual	Parameter	Planned	Actual
Instrument	ACIS	ACIS	Obspar format version number	6	6
Detector	ACIS-012367	ACIS-012367	Obspar file type	PREDICTED	ACTUAL
Grating	NONE	NONE	Obspar update status	NONE	UPDATED
Data mode	FAINT	FAINT	On-chip summing requested	N	N
Observation mode	SECONDARY	SECONDARY	Subarray requested	NONE	NONE
Pointing RA	0	145.4141784386353	Alternating exposures requested	N	N
Pointing Dec	0	-60.12568496984112	Primary exposure time	3.2	3.2
Pointing Roll	0.0	211.0347310431642			
SIM focus pos (mm)	-0.782348	-0.6828225247311905			
SIM defocus (mm)	0	0.8505141146731063			
SIM translation stage pos (mm)	-233.592463	250.466033080201			
SIM translation stage offset (mm)	0	-0.01005468664627074			
Observation start time	79766217.39393499	79766216.625469			
Observation start date	2000-07-12T05:16:57	2000-07-12T05:16:56			
Observation end time	79776727.744322	79776726.975857			
Observation end date	2000-07-12T08:12:08	2000-07-12T08:12:06			
Read mode	TIMED	TIMED			

## **2.3 Star Slots**

## **2.4 FID Slots**

# A Summary

## A.1 Status

V&V Scientist	Jen Lauer
V&V Date (YYYY-MM-DD)	2007.05.31
V&V Edition	1
V&V Disposition and Status	OK
V&V Charge Time	5.5674921

## A.2 Comments

Focal plane temperature is warmer than -118.7 C degrees during the first ksec of this observation. The ACIS spectral response calibration for the front-illuminated chips is less accurate at these warmer temperatures than it is at -119.7 C. The back-illuminatd chips are not affected at the focal plane temperatures recorded for this observation. Users whose science objectives depend on the most accurate spectral response (i.e.: fitting line-rich spectra) may notice an effect. Users whose science objectives do not depend on the most accurate spectral response should not notice an effect.