

# V&V Reference Report

## L2 ASCDS Version : 8.4.5

Observation 61987 - L2 Version 4  
Chandra X-Ray Center

L2 Processing Date : Aug 30 2012

## Contents

<b>1</b>	<b>Front</b>	<b>2</b>
<b>2</b>	<b>OBI</b>	<b>3</b>
2.1	OBI . . . . .	3
2.1.1	Images . . . . .	3
2.1.2	Bias . . . . .	3
2.1.3	Parameters . . . . .	4
2.1.4	Events . . . . .	4
2.2	Compared Parameters . . . . .	5
2.3	Star Slots . . . . .	6
2.4	FID Slots . . . . .	6
<b>A</b>	<b>Summary</b>	<b>7</b>
A.1	Status . . . . .	7
A.2	Comments . . . . .	7

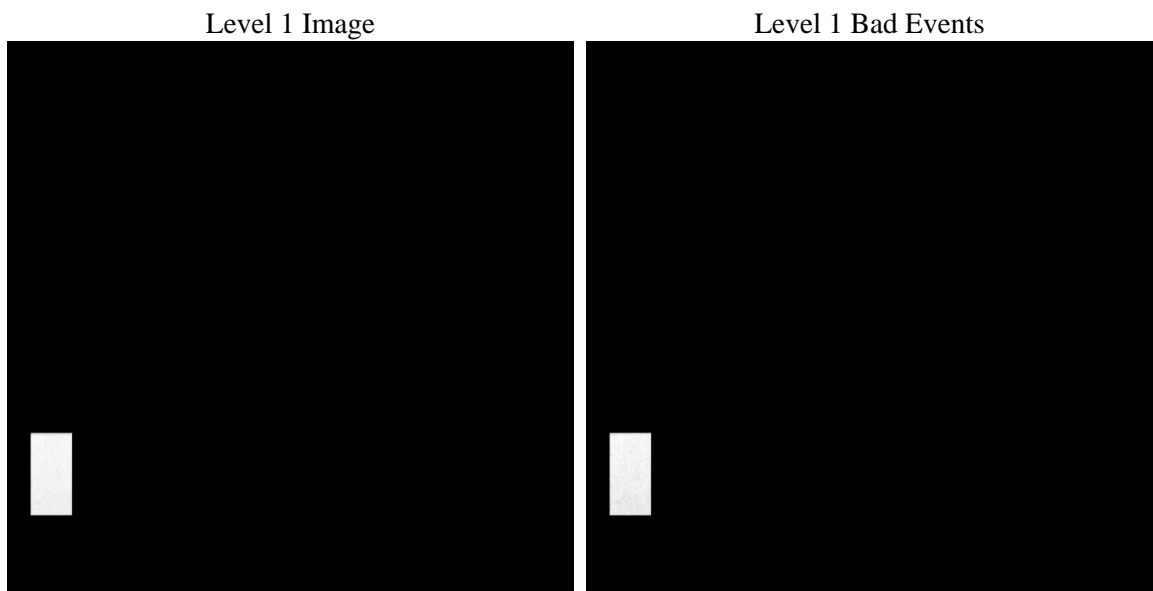
# 1 Front

seq_num	&#160	Sequence number
obs_id	61987	Observation id
title	ACIS-4 diagnostics	Proposal title
observer	CHANDRA engineering request/realtime commanding	Principal investig
object	&#160	Source name
dtcycle	0	&#160
cycle	P	events from which exps? Prim/Second/Both
ra_targ	0.0	Observer's specified target RA [deg]
dec_targ	0.0	Observer's specified target Dec [deg]
ra_nom	171.1400724309	Nominal RA [deg]
dec_nom	-47.917995746216	Nominal Dec [deg]
roll_nom	224.19264925234	Nominal Roll [deg]
revision	4	Processing version of data
ontime	8411.6999924183	Sum of GTIs [s]
livetime	8308.3740317327	Livetime [s]
ontime4	8411.6999924183	Sum of GTIs [s]
l2events	279318	Number of level 2 events

## 2 OBI

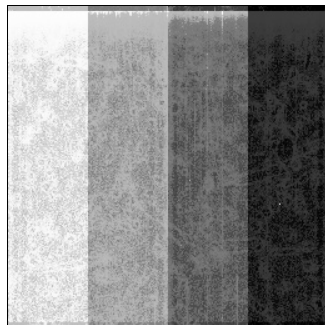
### 2.1 OBI

#### 2.1.1 Images



#### 2.1.2 Bias

Chip 4



### 2.1.3 Parameters

obi_num	0	Obi number	sched_exp_time	0.0	[s] Scheduled observation exposure time
ascdsver	8.4.5	Processing system revision	ontime	8411.6999924183	Sum of GTIs [s]
caldsver	4.5.1.1	&#160	ontime4	8411.6999924183	Sum of GTIs [s]
date	2012-08-30T22:20:33	Date and time of file creation	l1events	982136	Number of level 1 events
revision	4	Processing version of data			

### 2.1.4 Events

	<b>ccd 4</b>
level 1 events	982136
rejected events	664380
rejected %	67%

	<b>ccd 4</b>
grade 0 events	176249
	17%
grade 1 events	918
	0%
grade 2 events	57207
	5%
grade 3 events	19875
	2%
grade 4 events	20051
	2%
grade 5 events	3318
	0%
grade 6 events	44374
	4%
grade 7 events	660144
	67%

## 2.2 Compared Parameters

Parameter	Planned	Actual
Instrument	ACIS	ACIS
Detector	ACIS-4	ACIS-4
Grating	NONE	NONE
Data mode	FAINT	FAINT
Observation mode	SECONDARY	SECONDARY
[deg] Pointing RA	0	171.1400724309024
[deg] Pointing Dec	0	-47.91799574621569
[deg] Pointing Roll	0.0	224.1926492523359
[mm] SIM focus pos	-0.684267	-0.6828225247311905
[mm] SIM defocus	0	0.8505141146731063
[mm] SIM translation stage pos	-190.132523	250.466033080201
[mm] SIM translation stage offset	0	-0.01005468664627074
[s] Observation start time (MET)	80862674.28462499	80862673.516131
Observation start date	2000-07-24T21:51:14	2000-07-24T21:51:13
[s] Observation end time (MET)	80911464.286447	80911463.51794299
Observation end date	2000-07-25T11:24:24	2000-07-25T11:24:23
Read mode	TIMED	TIMED

Parameter	Planned	Actual
Obspar format version number	7	7
Obspar file type	PREDICTED	ACTUAL
Obspar update status	NONE	UPDATED
On-chip summing requested	N	N
Subarray requested	NONE	NONE
Alternating exposures requested	N	N
[s] Primary exposure time	3.3	3.3

## **2.3 Star Slots**

## **2.4 FID Slots**

## A Summary

### A.1 Status

V&V Scientist	Jen Lauer
V&V Date (YYYY-MM-DD)	2012.09.05
V&V Edition	1
V&V Disposition and Status	OK
V&V Charge Time	8.4116999924183

### A.2 Comments

Squeegee mode diagnostic observation; bias map is non-standard.