

V&V Reference Report

L2 ASCDS Version : 7.6.10

Observation 61897 - L2 Version 001
Chandra X-Ray Center

L2 Processing Date : Jun 9 2007

Contents

1	Front	2
2	OBI	3
2.1	OBI	3
2.1.1	Images	3
2.1.2	Bias	3
2.1.3	Parameters	4
2.1.4	Events	4
2.2	Compared Parameters	5
2.3	Star Slots	6
2.4	FID Slots	6
A	Summary	7
A.1	Status	7
A.2	Comments	7

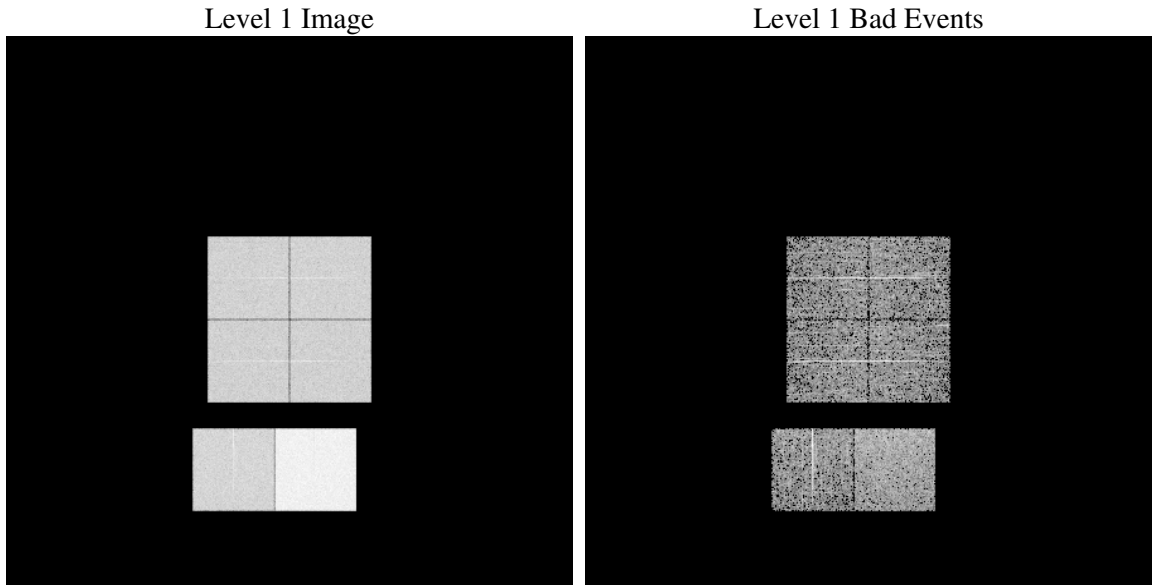
1 Front

seq_num	
obs_id	61897
title	ACIS-012367 diagnostics
observer	CHANDRA engineering request/realtime commanding
object	
dtcycle	0
cycle	P
ra_targ	0.0
dec_targ	0.0
ra_nom	330.44913706249
dec_nom	-44.376467668142
roll_nom	314.45882885112
revision	3
ontime	4082.2431694269
livetime	4030.5513483839
ontime0	1797.3804139942
ontime1	1810.3856637478
ontime2	1706.7132845223
ontime3	1706.5493737012
ontime6	1883.5013785809
ontime7	4082.2431694269
l2events	967497

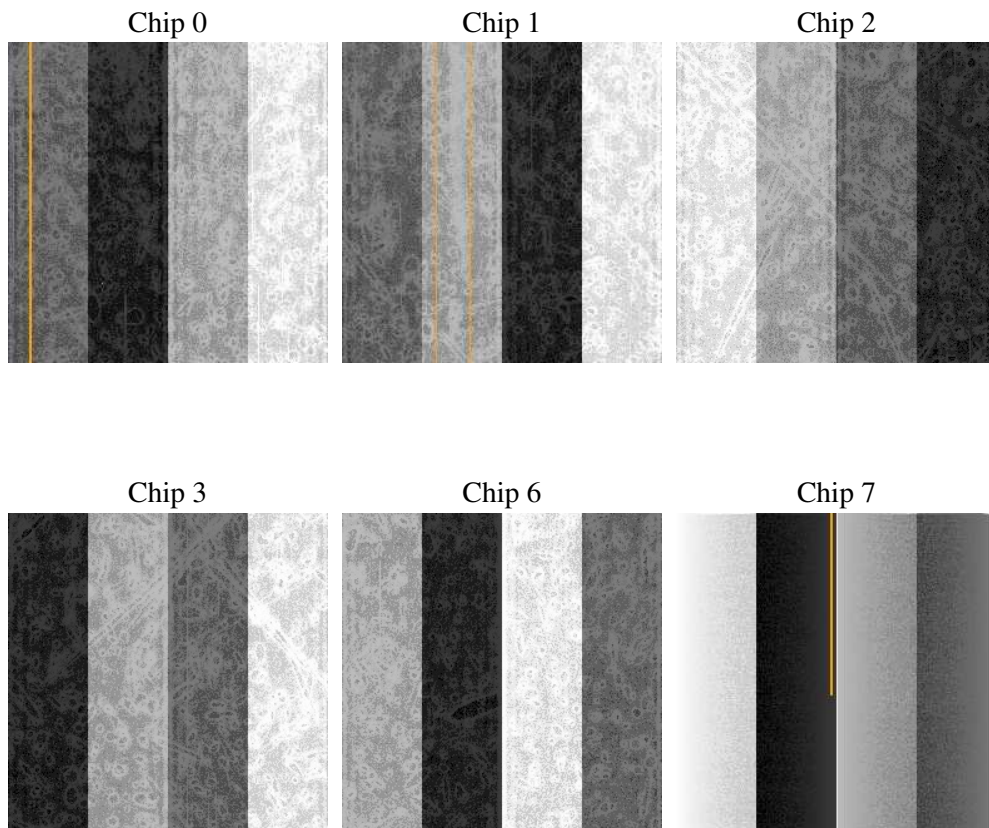
2 OBI

2.1 OBI

2.1.1 Images



2.1.2 Bias



2.1.3 Parameters

obi_num	1
ascdsver	7.6.10
caldsver	3.4.0
date	2007-06-09T23:54:36
revision	3

sched_exp_time	0.0
ontime	4082.2431694269
ontime0	1797.3804139942
ontime1	1810.3856637478
ontime2	1706.7132845223
ontime3	1706.5493737012
ontime6	1883.5013785809
ontime7	4082.2431694269
l1events	1098809

2.1.4 Events

	ccd 0	ccd 1	ccd 2	ccd 3	ccd 6	ccd 7
level 1 events	149840	151936	145398	145265	166208	340162
rejected events	13444	13766	14050	13925	15051	20341
rejected %	8%	9%	9%	9%	9%	5%

	ccd 0	ccd 1	ccd 2	ccd 3	ccd 6	ccd 7
grade 0 events	75329	76384	73293	73244	82405	82263
	50%	50%	50%	50%	49%	24%
grade 1 events	396	425	385	400	391	228
	0%	0%	0%	0%	0%	0%
grade 2 events	23995	24179	22856	23028	26114	70846
	16%	15%	15%	15%	15%	20%
grade 3 events	8603	8706	8266	8268	9243	32953
	5%	5%	5%	5%	5%	9%
grade 4 events	8657	8776	8237	8368	9253	32400
	5%	5%	5%	5%	5%	9%
grade 5 events	1076	1023	1063	1033	1236	4497
	0%	0%	0%	0%	0%	1%
grade 6 events	19812	20125	18696	18432	24142	101359
	13%	13%	12%	12%	14%	29%
grade 7 events	11972	12318	12602	12492	13424	15616
	7%	8%	8%	8%	8%	4%

2.2 Compared Parameters

Parameter	Planned	Actual	Parameter	Planned	Actual
Instrument	ACIS	ACIS	Obspar format version number	6	6
Detector	ACIS-012367	ACIS-012367	Obspar file type	PREDICTED	ACTUAL
Grating	NONE	NONE	Obspar update status	NONE	UPDATED
Data mode	FAINT	FAINT	On-chip summing requested	N	N
Observation mode	SECONDARY	SECONDARY	Subarray requested	NONE	NONE
Pointing RA	0	330.449137062488	Alternating exposures requested	N	N
Pointing Dec	0	-44.37646766814234	Primary exposure time	0.000000	3.2
Pointing Roll	0.0	314.45882885112			
SIM focus pos (mm)	-0.782348	-1.428180813131781			
SIM defocus (mm)	0	0.1051558262725154			
SIM translation stage pos (mm)	-233.592463	250.466033080201			
SIM translation stage offset (mm)	0	-0.01005468664627074			
Observation start time	86804386.307	86804385.53878801			
Observation start date	2000-10-01T16:19:46	2000-10-01T16:19:45			
Observation end time	86851964.759	86851963.990583			
Observation end date	2000-10-02T05:32:45	2000-10-02T05:32:43			
Read mode	TIMED	TIMED			

2.3 Star Slots

2.4 FID Slots

A Summary

A.1 Status

V&V Scientist	Beth Sundheim
V&V Date (YYYY-MM-DD)	2007.06.10
V&V Edition	1
V&V Disposition and Status	OK
V&V Charge Time	4.08224316

A.2 Comments