

# V&V Reference Report

## L2 ASCDS Version : 8.4.5

Observation 61797 - L2 Version 4  
Chandra X-Ray Center

L2 Processing Date : Sep 6 2012

## Contents

<b>1</b>	<b>Front</b>	<b>2</b>
<b>2</b>	<b>OBI</b>	<b>3</b>
2.1	OBI . . . . .	3
2.1.1	Images . . . . .	3
2.1.2	Bias . . . . .	3
2.1.3	Parameters . . . . .	4
2.1.4	Events . . . . .	4
2.2	Compared Parameters . . . . .	5
2.3	Star Slots . . . . .	6
2.4	FID Slots . . . . .	6
<b>A</b>	<b>Summary</b>	<b>7</b>
A.1	Status . . . . .	7
A.2	Comments . . . . .	7

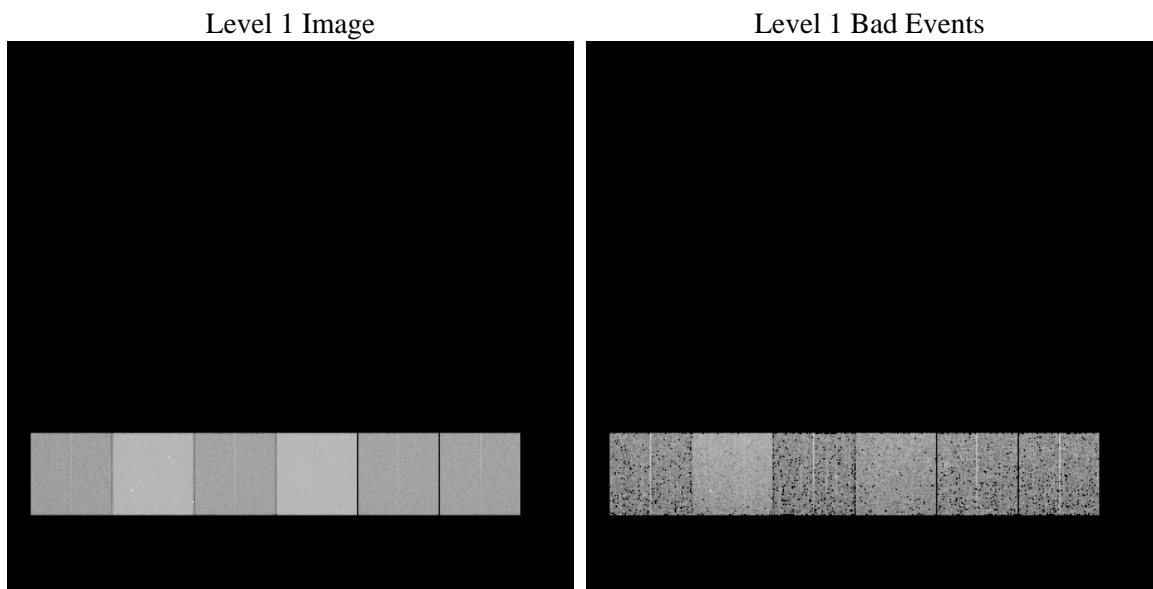
# 1 Front

seq_num	&#160	Sequence number
obs_id	61797	Observation id
title	ACIS-456789 diagnostics	Proposal title
observer	CHANDRA engineering request/realtime commanding	Principal investig
object	&#160	Source name
dtcycle	0	&#160
cycle	P	events from which exps? Prim/Second/Both
ra_targ	0.0	Observer's specified target RA [deg]
dec_targ	0.0	Observer's specified target Dec [deg]
ra_nom	92.631163832479	Nominal RA [deg]
dec_nom	-30.589730585375	Nominal Dec [deg]
roll_nom	348.41340800113	Nominal Roll [deg]
revision	4	Processing version of data
ontime	4841.7593140155	Sum of GTIs [s]
livetime	4780.450042224	Livetime [s]
ontime4	1999.5173846781	Sum of GTIs [s]
ontime5	5175.5994061083	Sum of GTIs [s]
ontime6	2158.2871547937	Sum of GTIs [s]
ontime7	4841.7593140155	Sum of GTIs [s]
ontime8	2203.7439541519	Sum of GTIs [s]
ontime9	2180.8513346463	Sum of GTIs [s]
l2events	1248931	Number of level 2 events

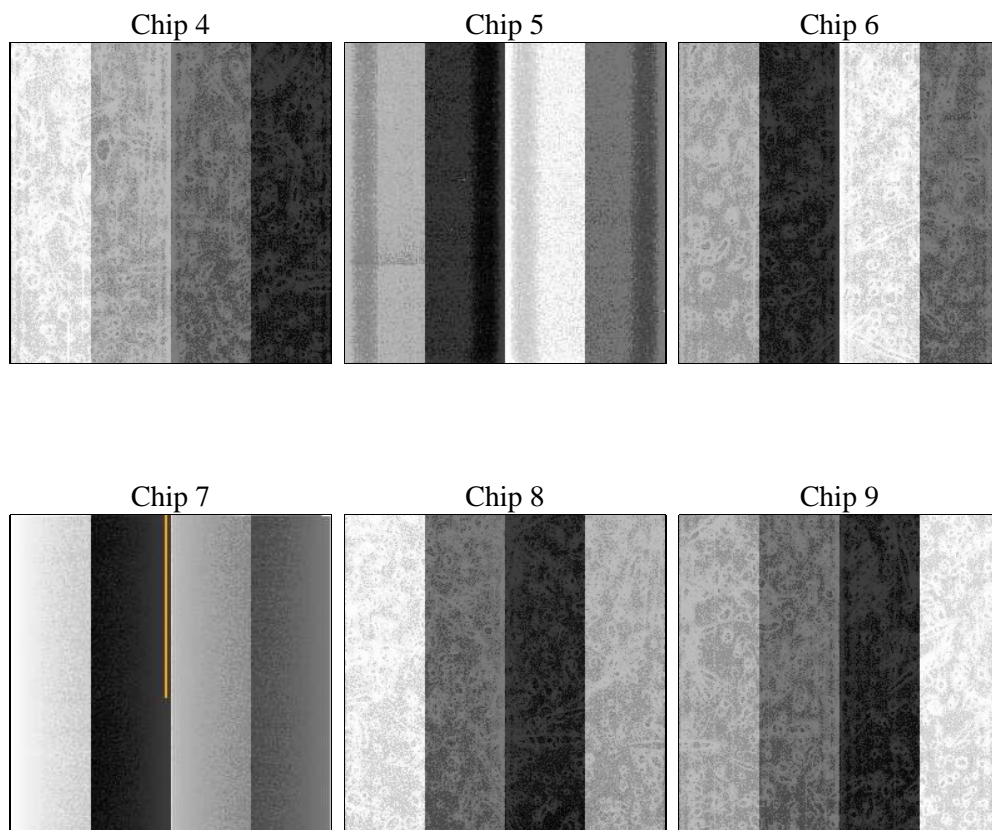
## 2 OBI

### 2.1 OBI

#### 2.1.1 Images



#### 2.1.2 Bias



### 2.1.3 Parameters

obi_num	0	Obi number	sched_exp_time	0.0	[s] Scheduled observation exposure time
ascdsver	8.4.5	Processing system revision	ontime	4841.7593140155	Sum of GTIs [s]
caldsver	4.5.1.1	&#160	ontime4	1999.5173846781	Sum of GTIs [s]
date	2012-09-06T10:25:11	Date and time of file creation	ontime5	5175.5994061083	Sum of GTIs [s]
revision	4	Processing version of data	ontime6	2158.2871547937	Sum of GTIs [s]
			ontime7	4841.7593140155	Sum of GTIs [s]
			ontime8	2203.7439541519	Sum of GTIs [s]
			ontime9	2180.8513346463	Sum of GTIs [s]
			l1events	1433152	Number of level 1 events

### 2.1.4 Events

	ccd 4	ccd 5	ccd 6	ccd 7	ccd 8	ccd 9		ccd 4	ccd 5	ccd 6	ccd 7	ccd 8	ccd 9
level 1 events	155296	366720	177328	377871	182824	173113	grade 0 events	78246	87848	88048	92104	91033	85433
rejected events	17233	35010	16540	23847	18627	17020		50%	23%	49%	24%	49%	49%
rejected %	11%	9%	9%	6%	10%	9%	grade 1 events	402	342	435	216	467	413
								0%	0%	0%	0%	0%	0%
							grade 2 events	24409	113354	28045	79061	28786	27693
								15%	30%	15%	20%	15%	15%
							grade 3 events	8497	22925	9958	36176	10162	9771
								5%	6%	5%	9%	5%	5%
							grade 4 events	8349	22539	9801	36330	10289	9842
								5%	6%	5%	9%	5%	5%
							grade 5 events	1187	7276	1325	5281	1423	1373
								0%	1%	0%	1%	0%	0%
							grade 6 events	18562	85044	24936	110353	23927	23354
								11%	23%	14%	29%	13%	13%
							grade 7 events	15644	27392	14780	18350	16737	15234
								10%	7%	8%	4%	9%	8%

## 2.2 Compared Parameters

Parameter	Planned	Actual	Parameter	Planned	Actual
Instrument	ACIS	ACIS	Obspar format version number	7	7
Detector	ACIS-456789	ACIS-456789	Obspar file type	PREDICTED	ACTUAL
Grating	NONE	NONE	Obspar update status	NONE	UPDATED
Data mode	FAINT	FAINT	On-chip summing requested	N	N
Observation mode	SECONDARY	SECONDARY	Subarray requested	NONE	NONE
[deg] Pointing RA	0	92.63116383247858	Alternating exposures requested	N	N
[deg] Pointing Dec	0	-30.58973058537541	[s] Primary exposure time	0.000000	3.2
[deg] Pointing Roll	0.0	348.4134080011273			
[mm] SIM focus pos	-0.684267	-0.6828225247311905			
[mm] SIM defocus	0	0.8505141146731063			
[mm] SIM translation stage pos	-190.132523	250.466033080201			
[mm] SIM translation stage offset	0	-0.01005468664627074			
[s] Observation start time (MET)	94800249.661	94800248.892827			
Observation start date	2001-01-02T05:24:10	2001-01-02T05:24:08			
[s] Observation end time (MET)	94813039.612	94813038.843317			
Observation end date	2001-01-02T08:57:20	2001-01-02T08:57:18			
Read mode	TIMED	TIMED			

## 2.3 Star Slots

## 2.4 FID Slots

## A Summary

### A.1 Status

V&V Scientist	Jen Lauer
V&V Date (YYYY-MM-DD)	2012.09.14
V&V Edition	1
V&V Disposition and Status	OK
V&V Charge Time	4.8417593140155

### A.2 Comments