

# V&V Reference Report

## L2 ASCDS Version : 7.6.10

Observation 61797 - L2 Version 001  
Chandra X-Ray Center

L2 Processing Date : Jun 22 2007

## Contents

<b>1</b>	<b>Front</b>	<b>2</b>
<b>2</b>	<b>OBI</b>	<b>3</b>
2.1	OBI . . . . .	3
2.1.1	Images . . . . .	3
2.1.2	Bias . . . . .	3
2.1.3	Parameters . . . . .	4
2.1.4	Events . . . . .	4
2.2	Compared Parameters . . . . .	5
2.3	Star Slots . . . . .	6
2.4	FID Slots . . . . .	6
<b>A</b>	<b>Summary</b>	<b>7</b>
A.1	Status . . . . .	7
A.2	Comments . . . . .	7

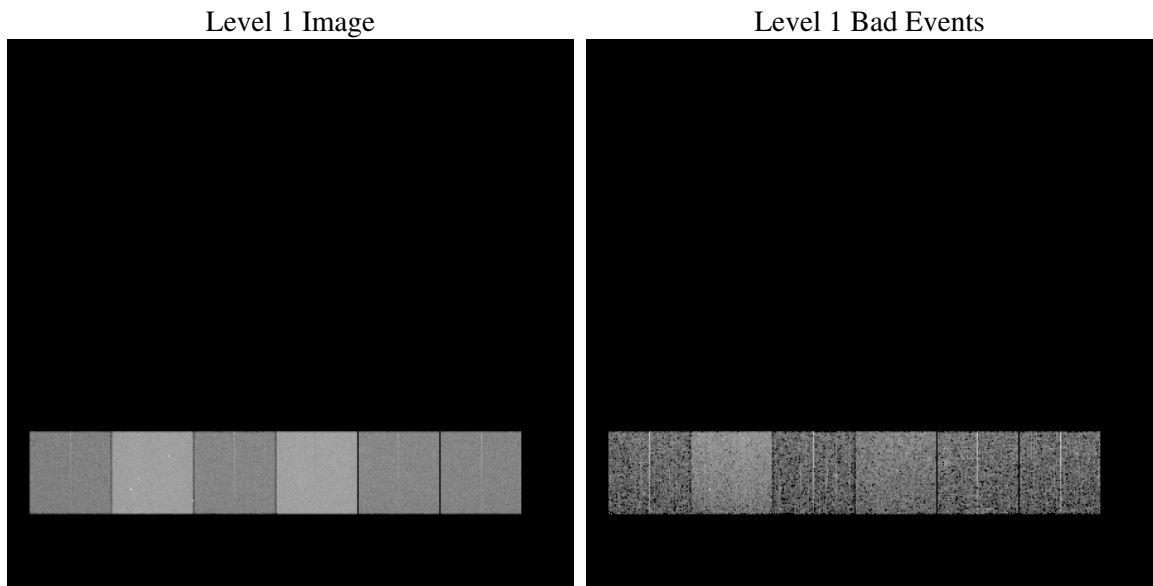
# 1 Front

seq_num	&#160
obs_id	61797
title	ACIS-456789 diagnostics
observer	CHANDRA engineering request/realtime commanding
object	&#160
dtcycle	0
cycle	P
ra_targ	0.0
dec_targ	0.0
ra_nom	92.631163832479
dec_nom	-30.589730585375
roll_nom	348.41340800113
revision	3
ontime	4840.1593140215
livetime	4778.8703023933
ontime4	1997.9173846841
ontime5	5174.0208649784
ontime6	2156.6871547997
ontime7	4840.1593140215
ontime8	2202.1439541578
ontime9	2179.2513346523
l2events	1247880

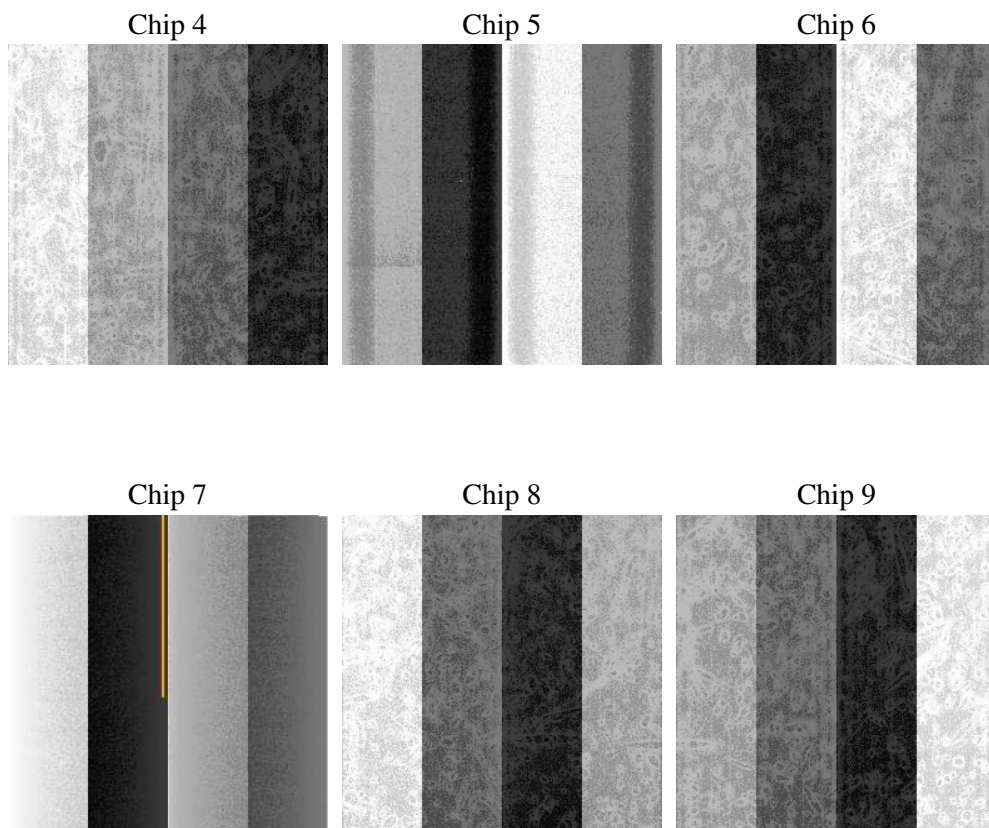
## 2 OBI

### 2.1 OBI

#### 2.1.1 Images



#### 2.1.2 Bias



### 2.1.3 Parameters

obi_num	0
ascdsver	7.6.10
caldbver	3.4.0
date	2007-06-22T13:28:36
revision	3

sched_exp_time	0.0
ontime	4840.1593140215
ontime4	1997.9173846841
ontime5	5174.0208649784
ontime6	2156.6871547997
ontime7	4840.1593140215
ontime8	2202.1439541578
ontime9	2179.2513346523
l1events	1433152

### 2.1.4 Events

	ccd 4	ccd 5	ccd 6	ccd 7	ccd 8	ccd 9
level 1 events	155296	366720	177328	377871	182824	173113
rejected events	17447	35224	16787	24078	18863	17247
rejected %	11%	9%	9%	6%	10%	9%

	ccd 4	ccd 5	ccd 6	ccd 7	ccd 8	ccd 9
grade 0 events	78247	87833	88049	92104	91034	85435
	50%	23%	49%	24%	49%	49%
grade 1 events	402	342	435	216	467	413
	0%	0%	0%	0%	0%	0%
grade 2 events	24408	113369	28044	79061	28785	27692
	15%	30%	15%	20%	15%	15%
grade 3 events	8497	22922	9958	36174	10162	9771
	5%	6%	5%	9%	5%	5%
grade 4 events	8349	22533	9801	36329	10290	9842
	5%	6%	5%	9%	5%	5%
grade 5 events	1187	7277	1325	5280	1423	1373
	0%	1%	0%	1%	0%	0%
grade 6 events	18562	85047	24936	110357	23926	23354
	11%	23%	14%	29%	13%	13%
grade 7 events	15644	27397	14780	18350	16737	15233
	10%	7%	8%	4%	9%	8%

## 2.2 Compared Parameters

Parameter	Planned	Actual	Parameter	Planned	Actual
Instrument	ACIS	ACIS	Obspar format version number	6	6
Detector	ACIS-456789	ACIS-456789	Obspar file type	PREDICTED	ACTUAL
Grating	NONE	NONE	Obspar update status	NONE	UPDATED
Data mode	FAINT	FAINT	On-chip summing requested	N	N
Observation mode	SECONDARY	SECONDARY	Subarray requested	NONE	NONE
Pointing RA	0	92.63116383247858	Alternating exposures requested	N	N
Pointing Dec	0	-30.58973058537541	Primary exposure time	0.000000	3.2
Pointing Roll	0.0	348.4134080011273			
SIM focus pos (mm)	-0.684267	-0.6828225247311905			
SIM defocus (mm)	0	0.8505141146731063			
SIM translation stage pos (mm)	-190.132523	250.466033080201			
SIM translation stage offset (mm)	0	-0.01005468664627074			
Observation start time	94800249.661	94800248.892827			
Observation start date	2001-01-02T05:24:10	2001-01-02T05:24:08			
Observation end time	94813039.612	94813038.843317			
Observation end date	2001-01-02T08:57:20	2001-01-02T08:57:18			
Read mode	TIMED	TIMED			

## **2.3 Star Slots**

## **2.4 FID Slots**

## A Summary

### A.1 Status

V&V Scientist	Beth Sundheim
V&V Date (YYYY-MM-DD)	2007.06.22
V&V Edition	1
V&V Disposition and Status	OK
V&V Charge Time	4.84015931

### A.2 Comments