

V&V Reference Report

L2 ASCDS Version : 7.6.9

Observation 61467 - L2 Version 001
Chandra X-Ray Center

L2 Processing Date : Jan 3 2007

Contents

1	Front	2
2	OBI	3
2.1	OBI	3
2.1.1	Images	3
2.1.2	Bias	3
2.1.3	Parameters	4
2.1.4	Events	4
2.2	Compared Parameters	5
2.3	Aspect	6
2.4	Star Slots	8
2.5	FID Slots	8
A	Summary	9
A.1	Status	9
A.2	Comments	9

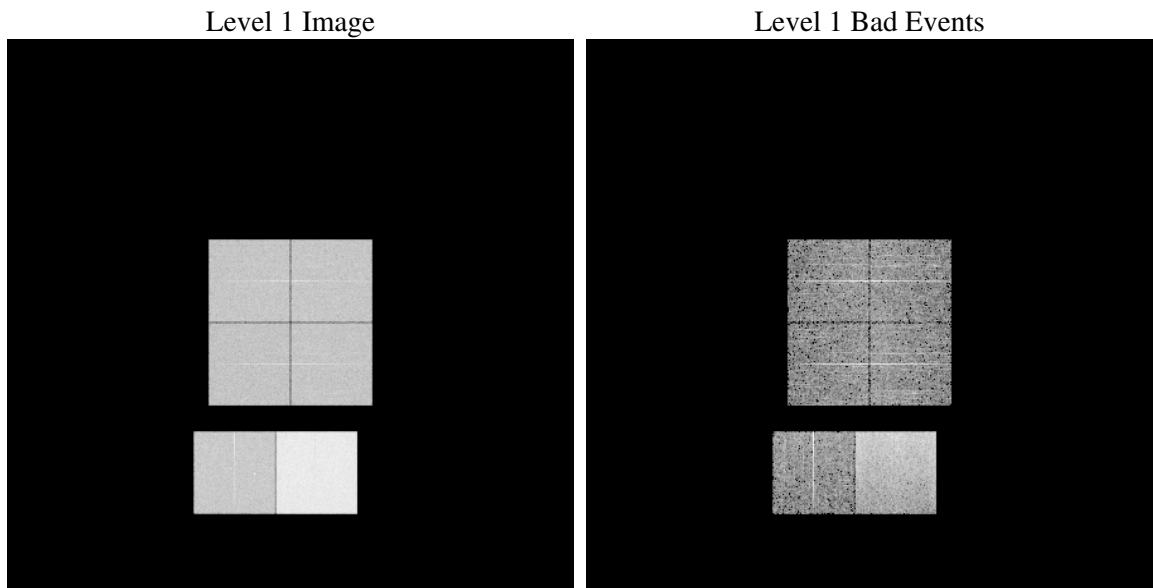
1 Front

seq_num	
obs_id	61467
title	ACIS-012367 diagnostics
observer	CHANDRA engineering request/realtime commanding
object	
dtcycle	0
cycle	P
ra_targ	0.0
dec_targ	0.0
ra_nom	137.00174194907
dec_nom	40.028643547923
roll_nom	54.688864204731
revision	2
ontime	7805.2210786939
livetime	7706.3866696556
ontime0	3050.7120323181
ontime1	3083.8995129913
ontime2	2840.8632113934
ontime3	2947.6532513946
ontime6	3249.2740044147
ontime7	7805.2210786939
l2events	1311588

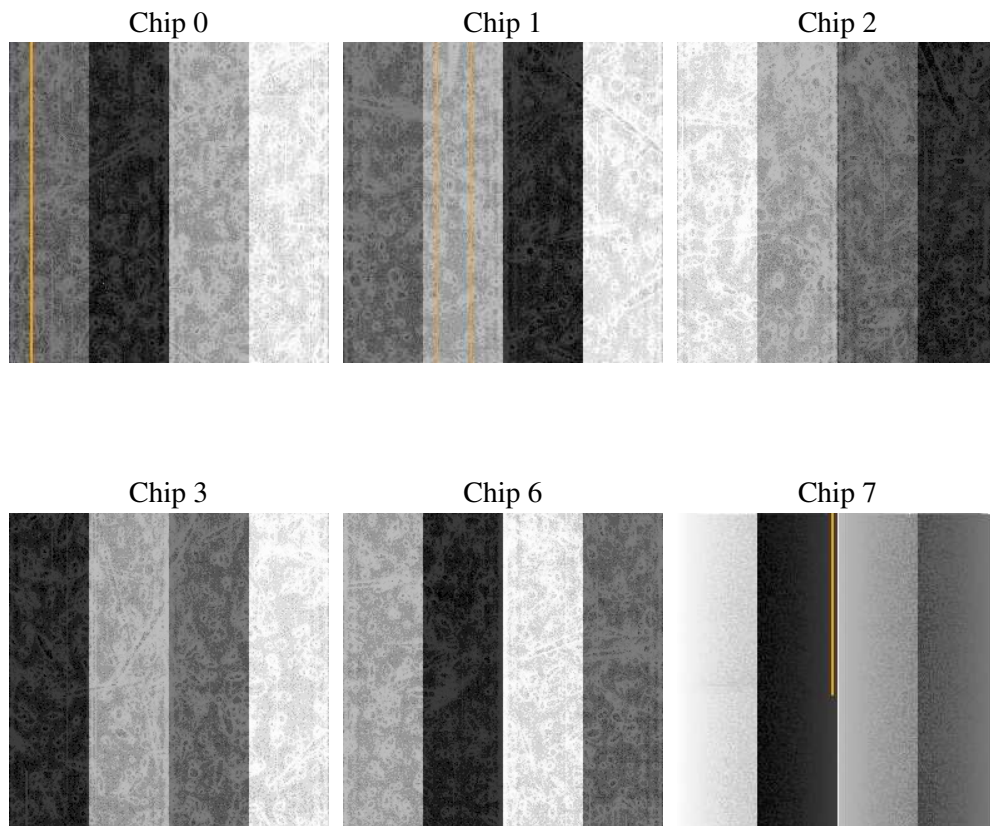
2 OBI

2.1 OBI

2.1.1 Images



2.1.2 Bias



2.1.3 Parameters

obi_num	0
ascdsver	7.6.9
caldsver	3.2.4
date	2007-01-03T20:21:30
revision	2

sched_exp_time	0.0
ontime	7807.5652986914
ontime0	3053.0562523156
ontime1	3085.4662237465
ontime2	2842.3888821453
ontime3	2949.3430821449
ontime6	3250.7586351633
ontime7	7807.5652986914
l1events	1542612

2.1.4 Events

	ccd 0	ccd 1	ccd 2	ccd 3	ccd 6	ccd 7
level 1 events	202102	204240	190577	198998	225564	521131
rejected events	22284	22918	22065	24048	24681	59930
rejected %	11%	11%	11%	12%	10%	11%

	ccd 0	ccd 1	ccd 2	ccd 3	ccd 6	ccd 7
grade 0 events	98938	100133	93180	97880	109382	82937
	48%	49%	48%	49%	48%	15%
grade 1 events	528	530	463	534	489	183
	0%	0%	0%	0%	0%	0%
grade 2 events	31970	32055	29948	30770	34622	140508
	15%	15%	15%	15%	15%	26%
grade 3 events	11390	11333	10654	10901	12412	33863
	5%	5%	5%	5%	5%	6%
grade 4 events	11221	11420	10400	11090	12273	33464
	5%	5%	5%	5%	5%	6%
grade 5 events	1640	1707	1487	1635	1854	8092
	0%	0%	0%	0%	0%	1%
grade 6 events	26299	26381	24330	24514	32194	170657
	13%	12%	12%	12%	14%	32%
grade 7 events	20116	20681	20115	21674	22338	51427
	9%	10%	10%	10%	9%	9%

2.2 Compared Parameters

Parameter	Planned	Actual	Parameter	Planned	Actual
Instrument	ACIS	ACIS	Obspar format version number	6	6
Detector	ACIS-012367	ACIS-012367	Obspar file type	PREDICTED	ACTUAL
Grating	NONE	NONE	Obspar update status	NONE	UPDATED
Data mode	FAINT	FAINT	On-chip summing requested	N	N
Observation mode	SECONDARY	SECONDARY	Subarray requested	NONE	NONE
Pointing RA	0	137.0017419490687	Alternating exposures requested	N	N
Pointing Dec	0	40.02864354792321	Primary exposure time	0.000000	3.2
Pointing Roll	0.0	54.68886420473063			
SIM focus pos (mm)	-0.782348	-0.6828225247311905			
SIM defocus (mm)	0	0.8505141146731063			
SIM translation stage pos (mm)	-233.592463	250.466033080201			
SIM translation stage offset (mm)	0	-0.01005468664627074			
Observation start time	117463882.043	117463881.27478			
Observation start date	2001-09-21T12:51:22	2001-09-21T12:51:21			
Observation end time	117475052.494	117475051.72523			
Observation end date	2001-09-21T15:57:32	2001-09-21T15:57:31			
Read mode	TIMED	TIMED			

2.3 Aspect

2.4 Star Slots

2.5 FID Slots

A Summary

A.1 Status

V&V Scientist	Beth Sundheim
V&V Date (YYYY-MM-DD)	2007.01.04
V&V Edition	1
V&V Disposition and Status	OK
V&V Charge Time	7.80522107

A.2 Comments

Focal plane temperature is warmer than -118.7 C degrees during the majority of this observation. The ACIS spectral response calibration for the front-illuminated chips is less accurate at these warmer temperatures than it is at -119.7 C.