

V&V Reference Report

L2 ASCDS Version : 8.4.5

Observation 61337 - L2 Version 3
Chandra X-Ray Center

L2 Processing Date : Oct 1 2012

Contents

1	Front	2
2	OBI	3
2.1	OBI	3
2.1.1	Images	3
2.1.2	Bias	3
2.1.3	Parameters	4
2.1.4	Events	4
2.2	Compared Parameters	5
2.3	Star Slots	6
2.4	FID Slots	6
A	Summary	7
A.1	Status	7
A.2	Comments	7

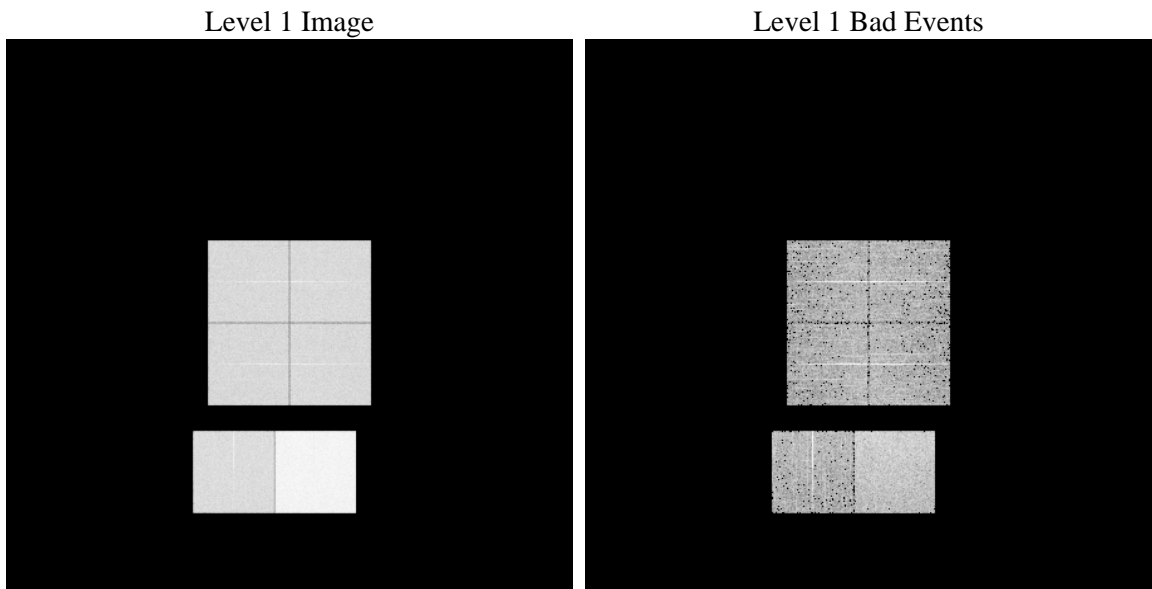
1 Front

seq_num	 	Sequence number
obs_id	61337	Observation id
title	ACIS-012367 diagnostics	Proposal title
observer	CHANDRA engineering request/realtime commanding	Principal investig
object	 	Source name
dtcycle	0	
cycle	P	events from which exps? Prim/Second/Both
ra_targ	0.0	Observer's specified target RA [deg]
dec_targ	0.0	Observer's specified target Dec [deg]
ra_nom	2.5659701283005	Nominal RA [deg]
dec_nom	12.556710979307	Nominal Dec [deg]
roll_nom	299.54993712251	Nominal Roll [deg]
revision	3	Processing version of data
ontime	7625.3175227642	Sum of GTIs [s]
livetime	7528.761160876	Livetime [s]
ontime0	2991.475955531	Sum of GTIs [s]
ontime1	3036.8497377783	Sum of GTIs [s]
ontime2	2865.0754158646	Sum of GTIs [s]
ontime3	2946.1012957543	Sum of GTIs [s]
ontime6	3205.3829305619	Sum of GTIs [s]
ontime7	7625.3175227642	Sum of GTIs [s]
l2events	1212767	Number of level 2 events

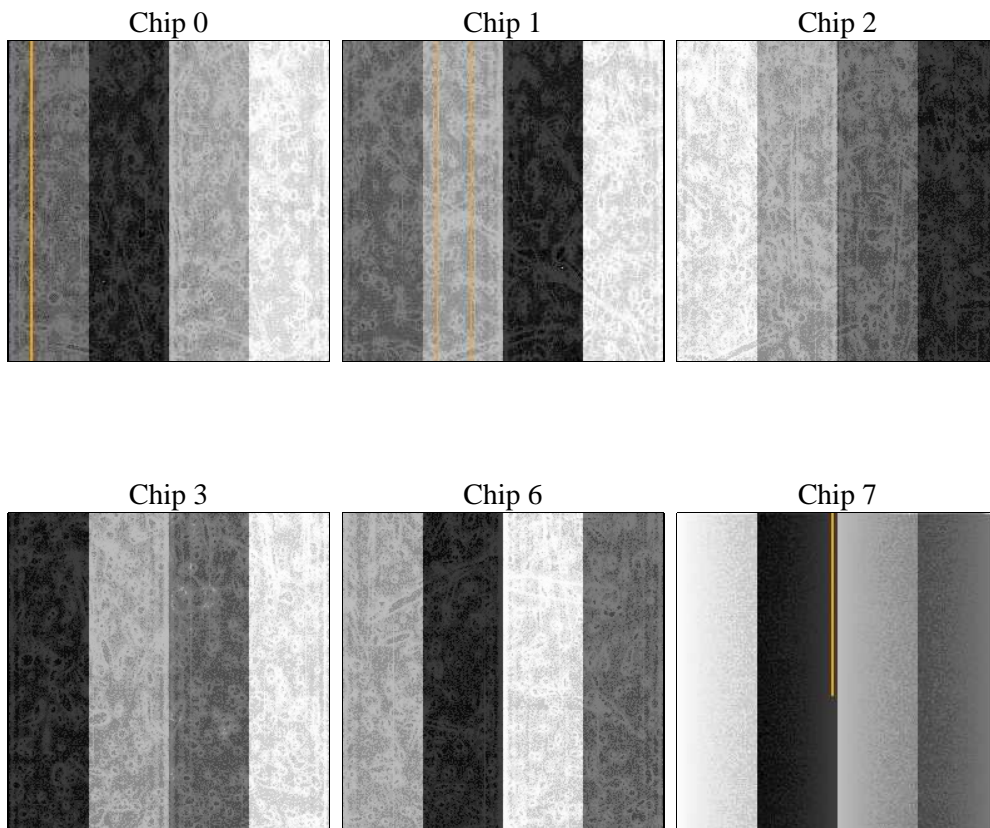
2 OBI

2.1 OBI

2.1.1 Images



2.1.2 Bias



2.1.3 Parameters

obi_num	1	Obi number	sched_exp_time	0.0	[s] Scheduled observation exposure time
ascdsver	8.4.5	Processing system revision	ontime	7625.3175227642	Sum of GTIs [s]
caldsver	4.5.2	 	ontime0	2991.475955531	Sum of GTIs [s]
date	2012-10-01T09:14:27	Date and time of file creation	ontime1	3036.8497377783	Sum of GTIs [s]
revision	3	Processing version of data	ontime2	2865.0754158646	Sum of GTIs [s]
			ontime3	2946.1012957543	Sum of GTIs [s]
			ontime6	3205.3829305619	Sum of GTIs [s]
			ontime7	7625.3175227642	Sum of GTIs [s]
			l1events	1415900	Number of level 1 events

2.1.4 Events

	ccd 0	ccd 1	ccd 2	ccd 3	ccd 6	ccd 7		ccd 0	ccd 1	ccd 2	ccd 3	ccd 6	ccd 7
level 1 events	183853	187787	179559	184785	206389	473527	grade 0 events	89459	91229	87856	90594	99616	109900
rejected events	21307	22287	22388	22500	23648	40451		48%	48%	48%	49%	48%	23%
rejected %	11%	11%	12%	12%	11%	8%	grade 1 events	438	478	459	461	507	265
								0%	0%	0%	0%	0%	0%
							grade 2 events	28809	29440	27621	28554	31755	96099
								15%	15%	15%	15%	15%	20%
							grade 3 events	10189	10324	10029	10259	11206	44138
								5%	5%	5%	5%	5%	9%
							grade 4 events	10175	10575	9729	10274	11281	43916
								5%	5%	5%	5%	5%	9%
							grade 5 events	1544	1567	1418	1526	1717	8222
								0%	0%	0%	0%	0%	1%
							grade 6 events	23914	23932	21936	22604	28883	139023
								13%	12%	12%	12%	13%	29%
							grade 7 events	19325	20242	20511	20513	21424	31964
								10%	10%	11%	11%	10%	6%

2.2 Compared Parameters

Parameter	Planned	Actual	Parameter	Planned	Actual
Instrument	ACIS	ACIS	Obspar format version number	7	7
Detector	ACIS-012367	ACIS-012367	Obspar file type	PREDICTED	ACTUAL
Grating	NONE	NONE	Obspar update status	NONE	UPDATED
Data mode	FAINT	FAINT	On-chip summing requested	N	N
Observation mode	SECONDARY	SECONDARY	Subarray requested	NONE	NONE
[deg] Pointing RA	0	2.565970128300542	Alternating exposures requested	N	N
[deg] Pointing Dec	0	12.55671097930668	[s] Primary exposure time	0.000000	3.2
[deg] Pointing Roll	0.0	299.5499371225059			
[mm] SIM focus pos	-0.782348	-1.428180813131781			
[mm] SIM defocus	0	0.1051558262725154			
[mm] SIM translation stage pos	-233.592463	250.466033080201			
[mm] SIM translation stage offset	0	-0.01005468664627074			
[s] Observation start time (MET)	128388594.88	128388594.11116			
Observation start date	2002-01-25T23:29:55	2002-01-25T23:29:54			
[s] Observation end time (MET)	128419027.131	128419026.36238			
Observation end date	2002-01-26T07:57:07	2002-01-26T07:57:06			
Read mode	TIMED	TIMED			

2.3 Star Slots

2.4 FID Slots

A Summary

A.1 Status

V&V Scientist	Jen Lauer
V&V Date (YYYY-MM-DD)	2012.10.03
V&V Edition	1
V&V Disposition and Status	OK
V&V Charge Time	7.6253175227642

A.2 Comments