

V&V Reference Report

L2 ASCDS Version : 8.4.5

Observation 61227 - L2 Version 3
Chandra X-Ray Center

L2 Processing Date : Oct 5 2012

Contents

1	Front	2
2	OBI	3
2.1	OBI	3
2.1.1	Images	3
2.1.2	Bias	3
2.1.3	Parameters	4
2.1.4	Events	4
2.2	Compared Parameters	5
2.3	Star Slots	6
2.4	FID Slots	6
A	Summary	7
A.1	Status	7
A.2	Comments	7

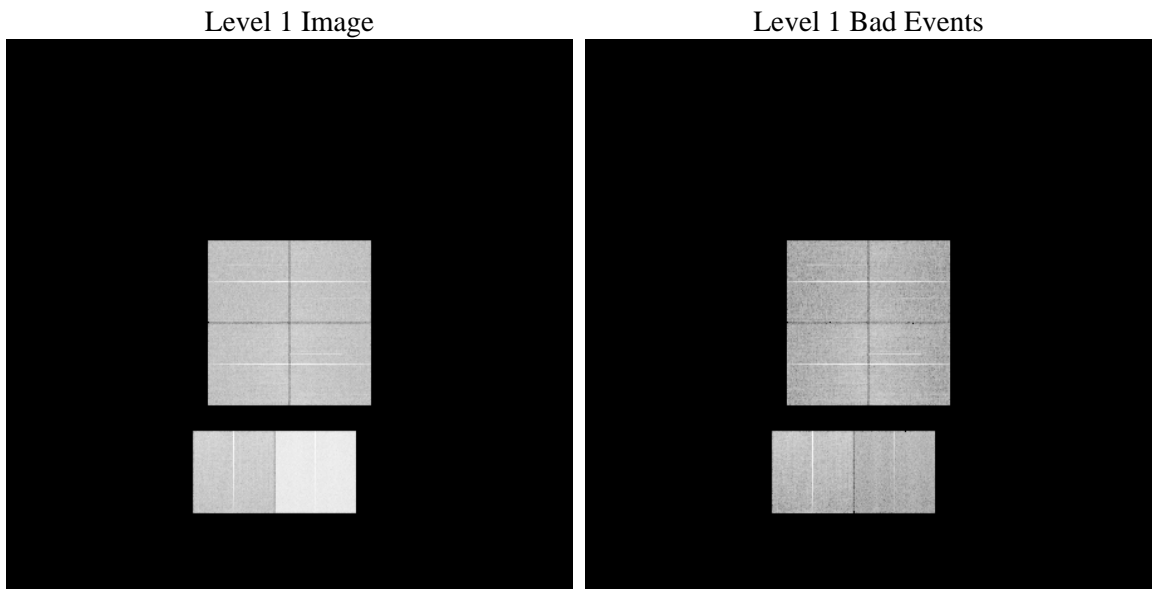
1 Front

seq_num	 	Sequence number
obs_id	61227	Observation id
title	ACIS-012367 diagnostics	Proposal title
observer	CHANDRA engineering request/realtime commanding	Principal investig
object	 	Source name
dtcycle	0	
cycle	P	events from which exps? Prim/Second/Both
ra_targ	0.0	Observer's specified target RA [deg]
dec_targ	0.0	Observer's specified target Dec [deg]
ra_nom	285.97935529987	Nominal RA [deg]
dec_nom	-37.976458744145	Nominal Dec [deg]
roll_nom	91.84421725375	Nominal Roll [deg]
revision	3	Processing version of data
ontime	8435.1999685764	Sum of GTIs [s]
livetime	8328.3883875067	Livetime [s]
ontime0	1860.12077564	Sum of GTIs [s]
ontime1	1928.2236853838	Sum of GTIs [s]
ontime2	1865.7193660736	Sum of GTIs [s]
ontime3	1937.8237152696	Sum of GTIs [s]
ontime6	2225.4746655524	Sum of GTIs [s]
ontime7	8435.1999685764	Sum of GTIs [s]
l2events	938900	Number of level 2 events

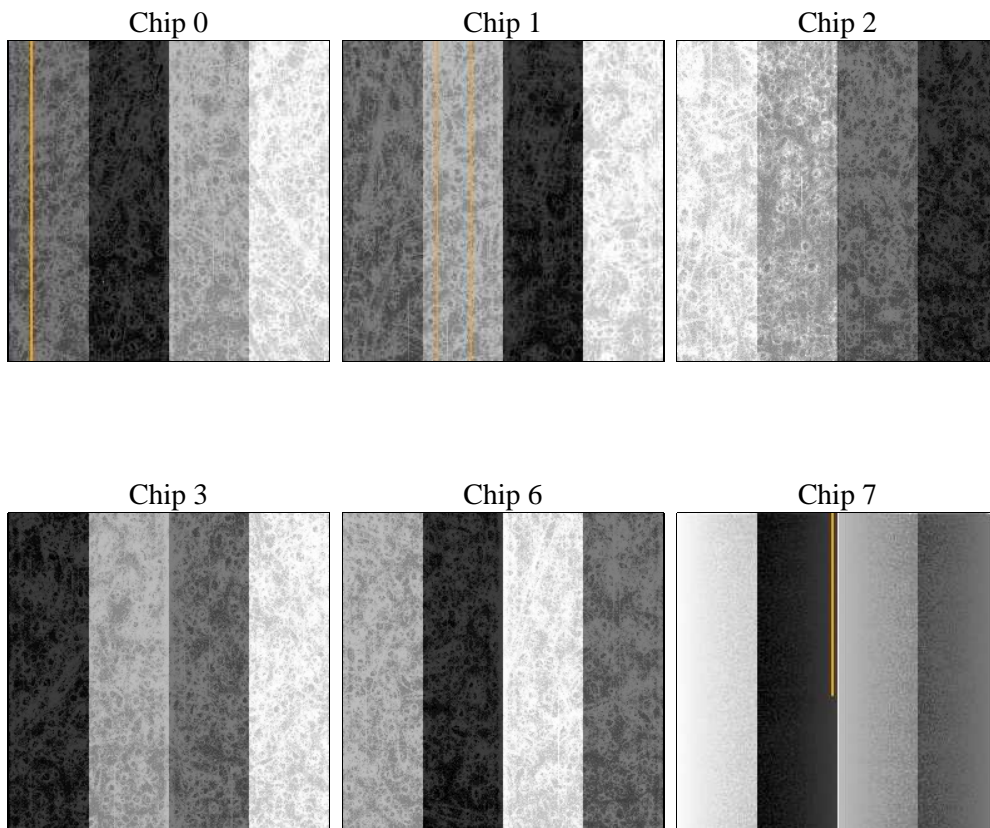
2 OBI

2.1 OBI

2.1.1 Images



2.1.2 Bias



2.1.3 Parameters

obi_num	2	Obi number	sched_exp_time	0.0	[s] Scheduled observation exposure time
ascdsver	8.4.5	Processing system revision	ontime	8435.1999685764	Sum of GTIs [s]
caldsver	4.5.2	 	ontime0	1860.12077564	Sum of GTIs [s]
date	2012-10-05T19:11:47	Date and time of file creation	ontime1	1928.2236853838	Sum of GTIs [s]
revision	3	Processing version of data	ontime2	1865.7193660736	Sum of GTIs [s]
			ontime3	1937.8237152696	Sum of GTIs [s]
			ontime6	2225.4746655524	Sum of GTIs [s]
			ontime7	8435.1999685764	Sum of GTIs [s]
			l1events	1565105	Number of level 1 events

2.1.4 Events

	ccd 0	ccd 1	ccd 2	ccd 3	ccd 6	ccd 7		ccd 0	ccd 1	ccd 2	ccd 3	ccd 6	ccd 7
level 1 events	158343	166660	181284	185983	229106	643729	grade 0 events	40801	42884	41208	43446	51266	126089
rejected events	81552	85798	103667	104810	130631	82200		25%	25%	22%	23%	22%	19%
rejected %	51%	51%	57%	56%	57%	12%	grade 1 events	1237	1205	1248	1381	1542	1076
								0%	0%	0%	0%	0%	0%
							grade 2 events	13619	14199	14027	14367	17244	131225
								8%	8%	7%	7%	7%	20%
							grade 3 events	5241	5544	5014	5480	6461	54542
								3%	3%	2%	2%	2%	8%
							grade 4 events	5131	5372	5196	5451	6523	53744
								3%	3%	2%	2%	2%	8%
							grade 5 events	1830	1928	1934	2028	2276	14655
								1%	1%	1%	1%	0%	2%
							grade 6 events	11999	12863	12172	12429	16981	195929
								7%	7%	6%	6%	7%	30%
							grade 7 events	78485	82665	100485	101401	126813	66469
								49%	49%	55%	54%	55%	10%

2.2 Compared Parameters

Parameter	Planned	Actual	Parameter	Planned	Actual
Instrument	ACIS	ACIS	Obspar format version number	7	7
Detector	ACIS-012367	ACIS-012367	Obspar file type	PREDICTED	ACTUAL
Grating	NONE	NONE	Obspar update status	NONE	UPDATED
Data mode	FAINT	FAINT	On-chip summing requested	N	N
Observation mode	SECONDARY	SECONDARY	Subarray requested	NONE	NONE
[deg] Pointing RA	0	285.9793552998655	Alternating exposures requested	N	N
[deg] Pointing Dec	0	-37.97645874414536	[s] Primary exposure time	0.000000	3.2
[deg] Pointing Roll	0.0	91.84421725374997			
[mm] SIM focus pos	-0.782348	-0.7809083437167272			
[mm] SIM defocus	0	0.7524282956875696			
[mm] SIM translation stage pos	-233.592463	250.466033080201			
[mm] SIM translation stage offset	0	-0.01005468664627074			
[s] Observation start time (MET)	135712037.982	135712036.95755			
Observation start date	2002-04-20T17:47:18	2002-04-20T17:47:16			
[s] Observation end time (MET)	135751951.484	135751950.45917			
Observation end date	2002-04-21T04:52:31	2002-04-21T04:52:30			
Read mode	TIMED	TIMED			

2.3 Star Slots

2.4 FID Slots

A Summary

A.1 Status

V&V Scientist	Beth Sundheim
V&V Date (YYYY-MM-DD)	2012.10.12
V&V Edition	1
V&V Disposition and Status	OK
V&V Charge Time	8.4351999685764

A.2 Comments