

# V&V Reference Report

## L2 ASCDS Version : 7.6.9

Observation 61097 - L2 Version 001  
Chandra X-Ray Center

L2 Processing Date : Sep 30 2006

## Contents

<b>1</b>	<b>Front</b>	<b>2</b>
<b>2</b>	<b>OBI</b>	<b>3</b>
2.1	OBI . . . . .	3
2.1.1	Images . . . . .	3
2.1.2	Bias . . . . .	3
2.1.3	Parameters . . . . .	4
2.1.4	Events . . . . .	4
2.2	Compared Parameters . . . . .	5
2.3	Aspect . . . . .	6
2.4	Star Slots . . . . .	8
2.5	FID Slots . . . . .	8
<b>A</b>	<b>Summary</b>	<b>9</b>
A.1	Status . . . . .	9
A.2	Comments . . . . .	9

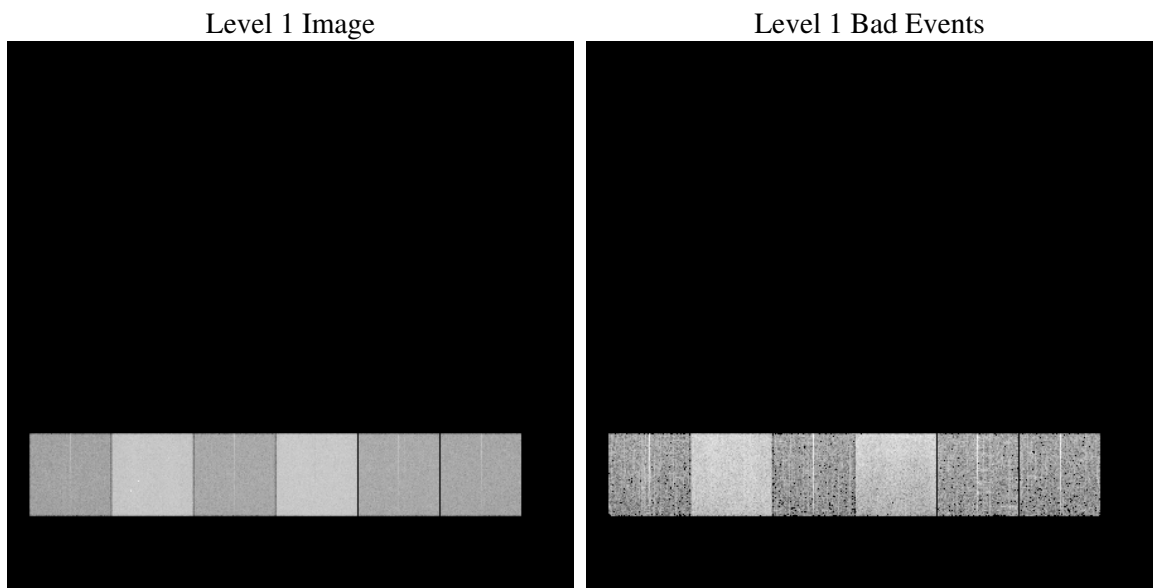
# 1 Front

seq_num	&#160
obs_id	61097
title	ACIS-456789 diagnostics
observer	CHANDRA engineering request/realtime commanding
object	&#160
dtcycle	0
cycle	P
ra_targ	0.0
dec_targ	0.0
ra_nom	345.57066882801
dec_nom	17.305907794918
roll_nom	135.25388121976
revision	2
ontime	7956.3566829264
livetime	7855.6085038644
ontime4	2958.7575190961
ontime5	8371.1999688148
ontime6	3293.3161020279
ontime7	7956.3566829264
ontime8	3342.012566179
ontime9	3238.0951322317
l2events	1281909

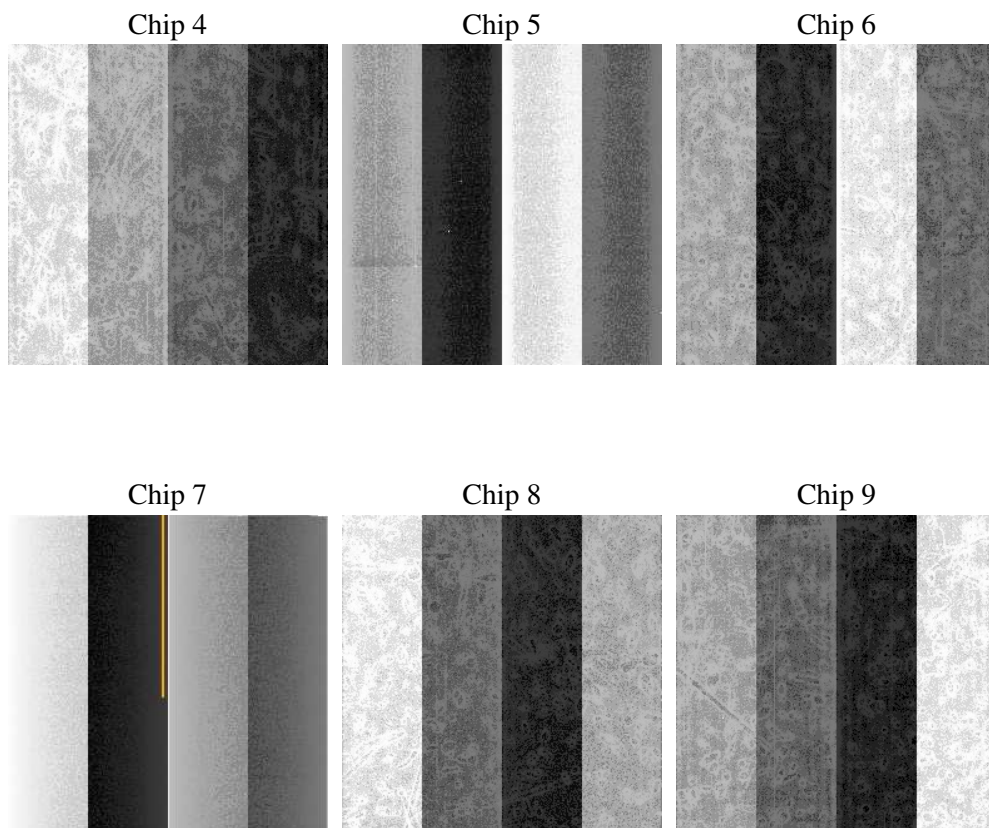
## 2 OBI

### 2.1 OBI

#### 2.1.1 Images



#### 2.1.2 Bias



### 2.1.3 Parameters

obi_num	0
ascdsver	7.6.9
caldsver	3.2.3
date	2006-09-30T15:40:06
revision	2

sched_exp_time	0.0
ontime	8044.1724317968
ontime4	2994.7175346017
ontime5	8465.4976781011
ontime6	3335.0256978273
ontime7	8044.1724317968
ontime8	3380.3990420103
ontime9	3270.2047280669
l1events	1557434

### 2.1.4 Events

	ccd 4	ccd 5	ccd 6	ccd 7	ccd 8	ccd 9
level 1 events	158164	412706	185432	431397	192896	176839
rejected events	23176	68795	22506	57810	25599	22228
rejected %	14%	16%	12%	13%	13%	12%

	ccd 4	ccd 5	ccd 6	ccd 7	ccd 8	ccd 9
grade 0 events	80636	34337	89967	65373	94023	87032
	50%	8%	48%	15%	48%	49%
grade 1 events	575	102	393	154	367	453
	0%	0%	0%	0%	0%	0%
grade 2 events	20590	170464	28588	117670	29212	26435
	13%	41%	15%	27%	15%	14%
grade 3 events	8941	10194	10037	26951	10855	9867
	5%	2%	5%	6%	5%	5%
grade 4 events	9083	9815	10128	26278	10646	9908
	5%	2%	5%	6%	5%	5%
grade 5 events	1392	6840	1603	7003	1816	1597
	0%	1%	0%	1%	0%	0%
grade 6 events	17359	123010	26258	141456	24515	22982
	10%	29%	14%	32%	12%	12%
grade 7 events	19588	57944	18458	46512	21462	18565
	12%	14%	9%	10%	11%	10%

## 2.2 Compared Parameters

Parameter	Planned	Actual	Parameter	Planned	Actual
Instrument	ACIS	ACIS	Obspar format version number	6	6
Detector	ACIS-456789	ACIS-456789	Obspar file type	PREDICTED	ACTUAL
Grating	NONE	NONE	Obspar update status	NONE	UPDATED
Data mode	FAINT	FAINT	On-chip summing requested	N	N
Observation mode	SECONDARY	SECONDARY	Subarray requested	NONE	NONE
Pointing RA	0	345.5706688280089	Alternating exposures requested	N	N
Pointing Dec	0	17.30590779491781	Primary exposure time	0.000000	3.2
Pointing Roll	0.0	135.2538812197617			
SIM focus pos (mm)	-0.684267	-0.6828225247311905			
SIM defocus (mm)	0	0.8505141146731063			
SIM translation stage pos (mm)	-190.132523	250.466033080201			
SIM translation stage offset (mm)	0	-0.01005468664627074			
Observation start time	144646397.548	144646396.52307			
Observation start date	2002-08-02T03:33:18	2002-08-02T03:33:16			
Observation end time	144667475.649	144667474.62393			
Observation end date	2002-08-02T09:24:36	2002-08-02T09:24:34			
Read mode	TIMED	TIMED			

## 2.3 Aspect



## **2.4 Star Slots**

## **2.5 FID Slots**



## A Summary

### A.1 Status

V&V Scientist	Jen Lauer
V&V Date (YYYY-MM-DD)	2006.10.02
V&V Edition	1
V&V Disposition and Status	OK
V&V Charge Time	7.95635668

### A.2 Comments

The ACIS focal plane temperature was above calibration limits for the entire observation.