

# V&V Reference Report

## L2 ASCDS Version : 7.6.9

Observation 61087 - L2 Version 001  
Chandra X-Ray Center

L2 Processing Date : Sep 30 2006

## Contents

<b>1</b>	<b>Front</b>	<b>2</b>
<b>2</b>	<b>OBI</b>	<b>3</b>
2.1	OBI . . . . .	3
2.1.1	Images . . . . .	3
2.1.2	Bias . . . . .	3
2.1.3	Parameters . . . . .	4
2.1.4	Events . . . . .	4
2.2	Compared Parameters . . . . .	5
2.3	Aspect . . . . .	6
2.4	Star Slots . . . . .	8
2.5	FID Slots . . . . .	8
<b>A</b>	<b>Summary</b>	<b>9</b>
A.1	Status . . . . .	9
A.2	Comments . . . . .	9

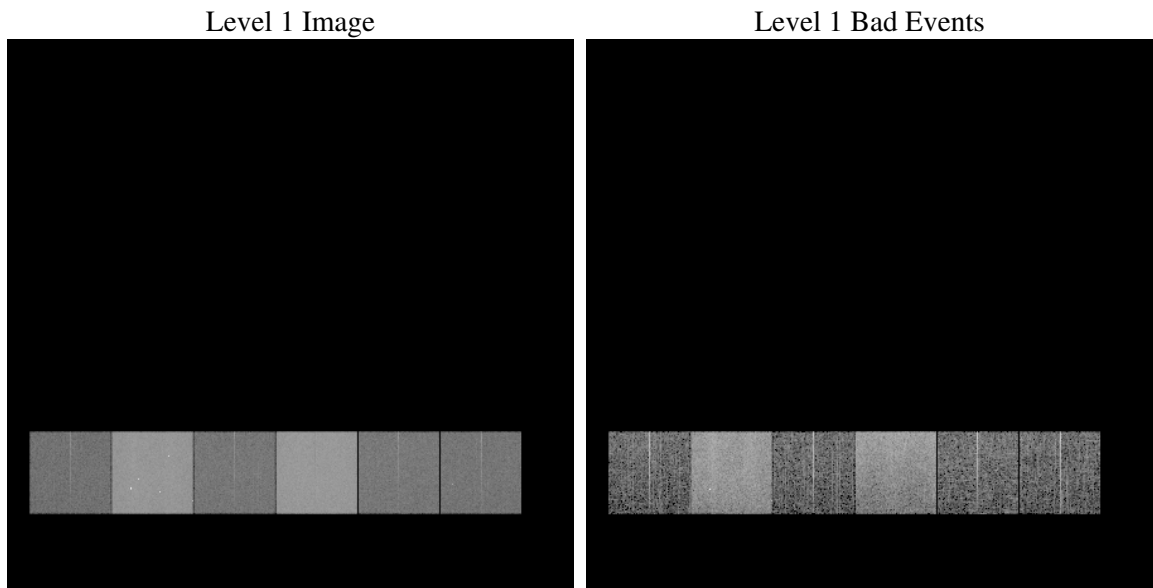
# 1 Front

seq_num	&#160
obs_id	61087
title	ACIS-456789 diagnostics
observer	CHANDRA engineering request/realtime commanding
object	&#160
dtcycle	0
cycle	P
ra_targ	0.0
dec_targ	0.0
ra_nom	344.47045839697
dec_nom	15.002234804651
roll_nom	142.64893356203
revision	2
ontime	8133.503501147
livetime	8030.5121824077
ontime4	2900.5054587722
ontime5	8457.599968493
ontime6	3139.1489051282
ontime7	8133.503501147
ontime8	3205.2024247348
ontime9	3107.7669415772
l2events	1273209

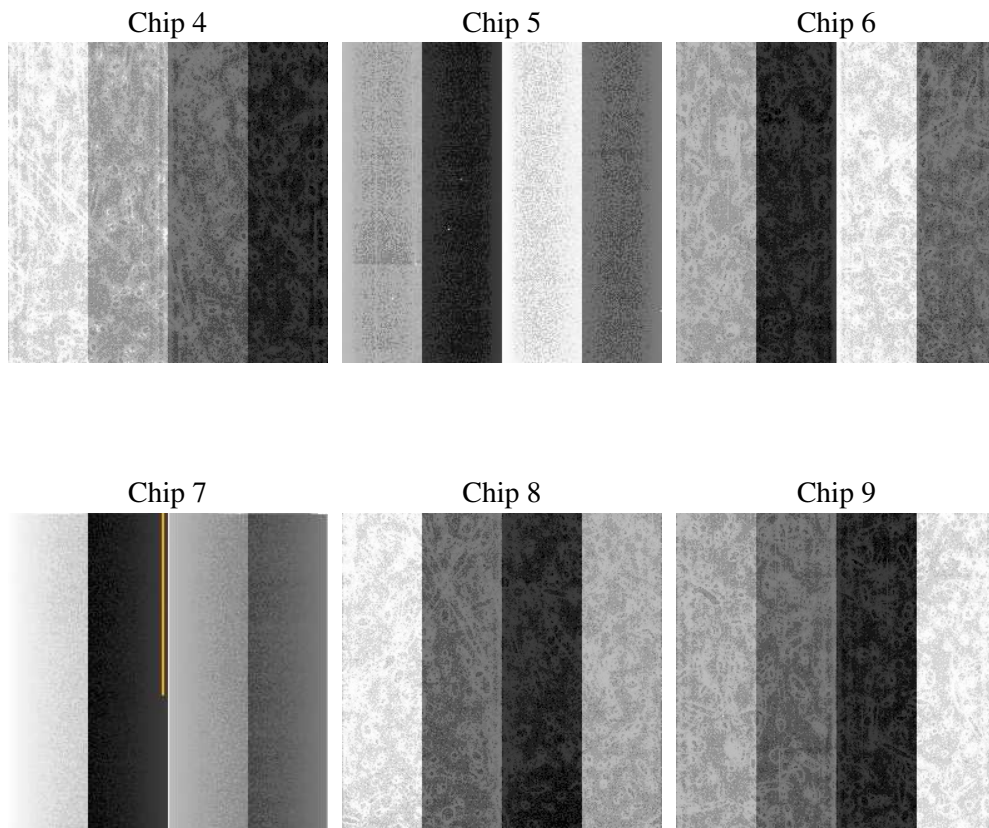
## 2 OBI

### 2.1 OBI

#### 2.1.1 Images



#### 2.1.2 Bias



### 2.1.3 Parameters

obi_num	0
ascdsver	7.6.9
caldbver	3.2.3
date	2006-09-30T17:04:20
revision	2

sched_exp_time	0.0
ontime	8134.9187308848
ontime4	2900.7280822992
ontime5	8459.0151982307
ontime6	3140.564134866
ontime7	8134.9187308848
ontime8	3205.3840082884
ontime9	3108.1537251174
l1events	1556982

### 2.1.4 Events

	ccd 4	ccd 5	ccd 6	ccd 7	ccd 8	ccd 9
level 1 events	154315	424217	177754	444700	184677	171319
rejected events	23128	70821	23217	60021	25341	23322
rejected %	14%	16%	13%	13%	13%	13%

	ccd 4	ccd 5	ccd 6	ccd 7	ccd 8	ccd 9
grade 0 events	77605	38247	84345	66930	88254	82544
	50%	9%	47%	15%	47%	48%
grade 1 events	572	175	386	159	441	423
	0%	0%	0%	0%	0%	0%
grade 2 events	19484	169890	27099	119535	27707	24824
	12%	40%	15%	26%	15%	14%
grade 3 events	8774	10739	9152	27496	9995	9361
	5%	2%	5%	6%	5%	5%
grade 4 events	8627	10199	9247	26904	9895	9347
	5%	2%	5%	6%	5%	5%
grade 5 events	1513	7338	1635	7575	1840	1670
	0%	1%	0%	1%	0%	0%
grade 6 events	16697	124321	24694	143814	23485	21921
	10%	29%	13%	32%	12%	12%
grade 7 events	21043	63308	21196	52287	23060	21229
	13%	14%	11%	11%	12%	12%

## 2.2 Compared Parameters

Parameter	Planned	Actual	Parameter	Planned	Actual
Instrument	ACIS	ACIS	Obspar format version number	6	6
Detector	ACIS-456789	ACIS-456789	Obspar file type	PREDICTED	ACTUAL
Grating	NONE	NONE	Obspar update status	NONE	UPDATED
Data mode	FAINT	FAINT	On-chip summing requested	N	N
Observation mode	SECONDARY	SECONDARY	Subarray requested	NONE	NONE
Pointing RA	0	344.4704583969714	Alternating exposures requested	N	N
Pointing Dec	0	15.00223480465105	Primary exposure time	3.2	3.2
Pointing Roll	0.0	142.6489335620334			
SIM focus pos (mm)	-0.684267	-0.7809083437167272			
SIM defocus (mm)	0	0.7524282956875696			
SIM translation stage pos (mm)	-190.132523	250.466033080201			
SIM translation stage offset (mm)	0	-0.01005468664627074			
Observation start time	145554617.285164	145554616.26045			
Observation start date	2002-08-12T15:50:17	2002-08-12T15:50:16			
Observation end time	145577206.236097	145577205.21138			
Observation end date	2002-08-12T22:06:46	2002-08-12T22:06:45			
Read mode	TIMED	TIMED			

## 2.3 Aspect



## **2.4 Star Slots**

## **2.5 FID Slots**



# A Summary

## A.1 Status

V&V Scientist	Jen Lauer
V&V Date (YYYY-MM-DD)	2006.10.02
V&V Edition	1
V&V Disposition and Status	OK
V&V Charge Time	8.1335035

## A.2 Comments

The ACIS focal plane temperature was above calibration limits for the entire observation.