

V&V Reference Report

L2 ASCDS Version : 7.6.9

Observation 61047 - L2 Version 001
Chandra X-Ray Center

L2 Processing Date : Oct 2 2006

Contents

1	Front	2
2	OBI	3
2.1	OBI	3
2.1.1	Images	3
2.1.2	Bias	3
2.1.3	Parameters	4
2.1.4	Events	4
2.2	Compared Parameters	5
2.3	Aspect	6
2.4	Star Slots	8
2.5	FID Slots	8
A	Summary	9
A.1	Status	9
A.2	Comments	9

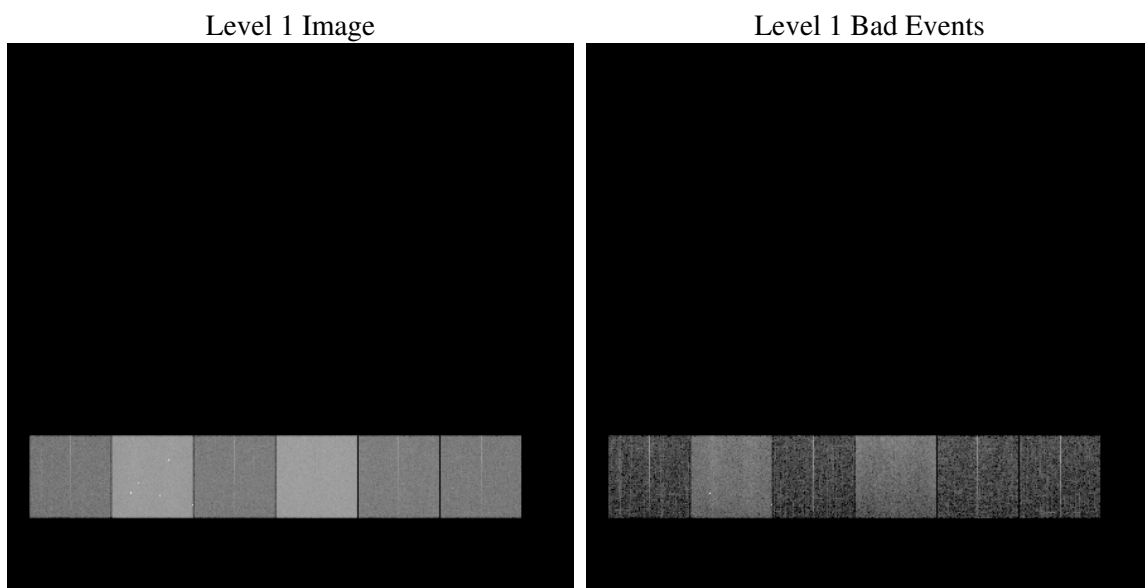
1 Front

seq_num	
obs_id	61047
title	ACIS-456789 diagnostics
observer	CHANDRA engineering request/realtime commanding
object	
dtcycle	0
cycle	P
ra_targ	0.0
dec_targ	0.0
ra_nom	284.53001859257
dec_nom	-43.318490358982
roll_nom	286.90694363142
revision	2
ontime	8227.9012017846
livetime	8123.7145625203
ontime4	2935.1848342717
ontime5	8425.5999686122
ontime6	3197.6670272946
ontime7	8227.9012017846
ontime8	3213.953948468
ontime9	3090.5898563862
l2events	1264625

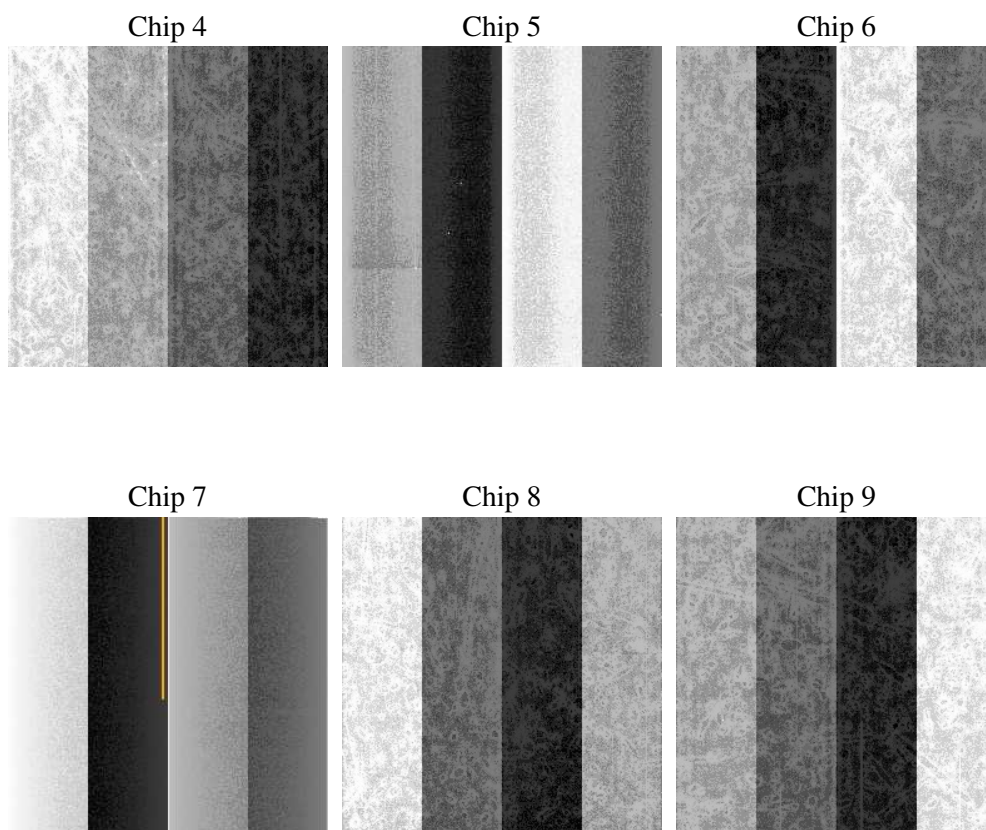
2 OBI

2.1 OBI

2.1.1 Images



2.1.2 Bias



2.1.3 Parameters

obi_num	0
ascdsver	7.6.9
caldsver	3.2.3
date	2006-10-03T01:03:20
revision	2

sched_exp_time	0.0
ontime	8258.0746620893
ontime4	2946.1024628878
ontime5	8455.7734289169
ontime6	3211.8666860759
ontime7	8258.0746620893
ontime8	3228.0715272725
ontime9	3101.6716450155
l1events	1555166

2.1.4 Events

	ccd 4	ccd 5	ccd 6	ccd 7	ccd 8	ccd 9
level 1 events	156849	419946	179121	445434	184671	169145
rejected events	24219	73034	23986	62047	25899	23726
rejected %	15%	17%	13%	13%	14%	14%

	ccd 4	ccd 5	ccd 6	ccd 7	ccd 8	ccd 9
grade 0 events	78490	34398	84009	64248	88230	81442
	50%	8%	46%	14%	47%	48%
grade 1 events	531	262	393	161	393	433
	0%	0%	0%	0%	0%	0%
grade 2 events	19983	167599	28064	120471	27581	24344
	12%	39%	15%	27%	14%	14%
grade 3 events	8777	10416	9018	26777	10134	9108
	5%	2%	5%	6%	5%	5%
grade 4 events	8890	9595	9413	26207	10141	9199
	5%	2%	5%	5%	5%	5%
grade 5 events	1463	7662	1692	7529	1806	1689
	0%	1%	0%	1%	0%	0%
grade 6 events	16934	126084	25260	146982	23328	21798
	10%	30%	14%	32%	12%	12%
grade 7 events	21781	63930	21272	53059	23058	21132
	13%	15%	11%	11%	12%	12%

2.2 Compared Parameters

Parameter	Planned	Actual	Parameter	Planned	Actual
Instrument	ACIS	ACIS	Obspar format version number	6	6
Detector	ACIS-456789	ACIS-456789	Obspar file type	PREDICTED	ACTUAL
Grating	NONE	NONE	Obspar update status	NONE	UPDATED
Data mode	FAINT	FAINT	On-chip summing requested	N	N
Observation mode	SECONDARY	SECONDARY	Subarray requested	NONE	NONE
Pointing RA	0	284.5300185925696	Alternating exposures requested	N	N
Pointing Dec	0	-43.31849035898183	Primary exposure time	3.2	3.2
Pointing Roll	0.0	286.9069436314152			
SIM focus pos (mm)	-0.684267	-0.6828225247311905			
SIM defocus (mm)	0	0.8505141146731063			
SIM translation stage pos (mm)	-190.132523	250.466033080201			
SIM translation stage offset (mm)	0	-0.01005468664627074			
Observation start time	147610804.269958	147610803.24525			
Observation start date	2002-09-05T11:00:04	2002-09-05T11:00:03			
Observation end time	147634112.770919	147634111.74621			
Observation end date	2002-09-05T17:28:33	2002-09-05T17:28:31			
Read mode	TIMED	TIMED			

2.3 Aspect

2.4 Star Slots

2.5 FID Slots

A Summary

A.1 Status

V&V Scientist	Jen Lauer
V&V Date (YYYY-MM-DD)	2006.10.03
V&V Edition	1
V&V Disposition and Status	OK
V&V Charge Time	8.2279012

A.2 Comments

The ACIS focal plane temperature was above calibration limits for the entire observation.