

V&V Reference Report

L2 ASCDS Version : 7.6.8.1

Observation 60777 - L2 Version 001
Chandra X-Ray Center

L2 Processing Date : Aug 5 2006

Contents

1	Front	2
2	OBI	3
2.1	OBI	3
2.1.1	Images	3
2.1.2	Bias	3
2.1.3	Parameters	4
2.1.4	Events	4
2.2	Compared Parameters	5
2.3	Aspect	6
2.4	Star Slots	8
2.5	FID Slots	8
A	Summary	9
A.1	Status	9
A.2	Comments	9

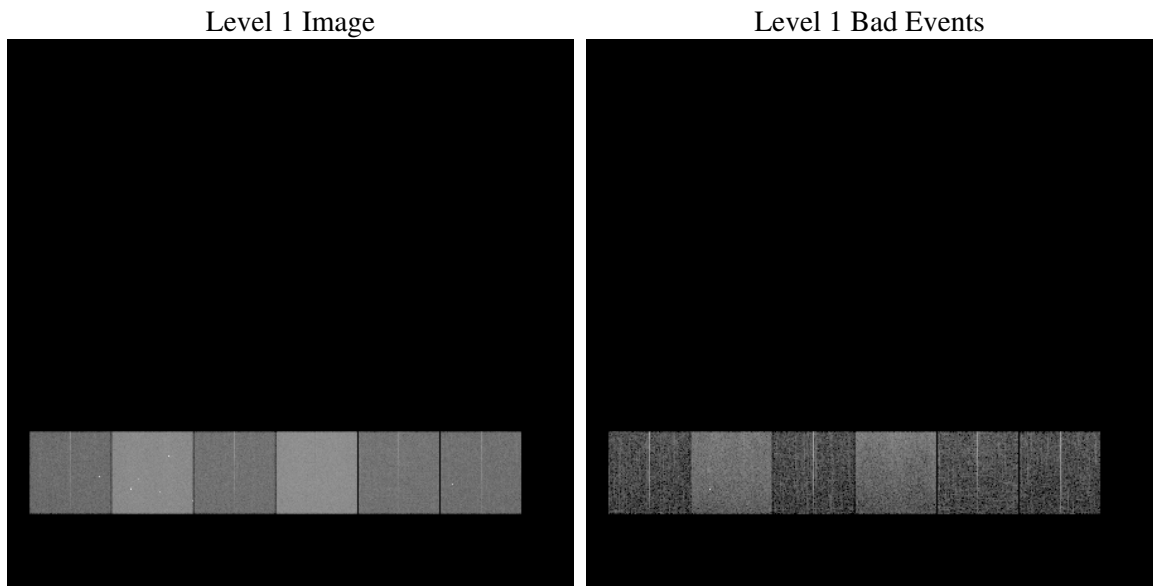
1 Front

seq_num	
obs_id	60777
title	ACIS-456789 diagnostics
observer	CHANDRA engineering request/realtime commanding
object	
dtcycle	0
cycle	P
ra_targ	0.0
dec_targ	0.0
ra_nom	86.11729247593
dec_nom	22.356297401336
roll_nom	271.07546370748
revision	2
ontime	7788.7999709845
livetime	7690.1734958996
ontime4	3163.9283480346
ontime5	7788.7999709845
ontime6	3450.3736710846
ontime7	7788.7999709845
ontime8	3526.922275871
ontime9	3404.8762204349
l2events	1151277

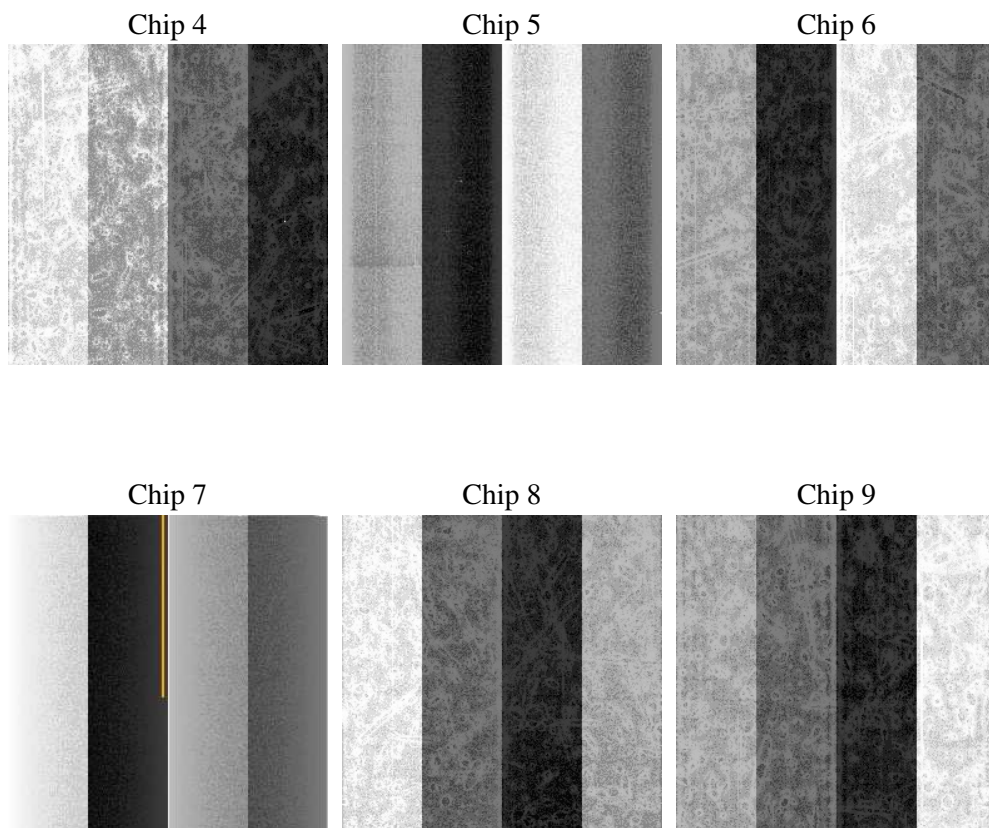
2 OBI

2.1 OBI

2.1.1 Images



2.1.2 Bias



2.1.3 Parameters

obi_num	0
ascdsver	7.6.8.1
caldbver	3.2.2
date	2006-08-05T04:24:10
revision	2

sched_exp_time	0.0
ontime	7791.3607990444
ontime4	3166.4891760945
ontime5	7791.3607990444
ontime6	3451.6989910007
ontime7	7791.3607990444
ontime8	3529.483103931
ontime9	3406.3246603608
l1events	1423576

2.1.4 Events

	ccd 4	ccd 5	ccd 6	ccd 7	ccd 8	ccd 9
level 1 events	154170	354012	177160	383438	184939	169857
rejected events	24845	59570	25089	52802	28078	24917
rejected %	16%	16%	14%	13%	15%	14%

	ccd 4	ccd 5	ccd 6	ccd 7	ccd 8	ccd 9
grade 0 events	74966	38028	82495	60161	85318	79547
	48%	10%	46%	15%	46%	46%
grade 1 events	569	218	404	134	485	468
	0%	0%	0%	0%	0%	0%
grade 2 events	20588	138993	26374	99996	27182	24672
	13%	39%	14%	26%	14%	14%
grade 3 events	8512	10067	9295	24240	10128	9324
	5%	2%	5%	6%	5%	5%
grade 4 events	8523	9853	9479	24165	10136	9302
	5%	2%	5%	6%	5%	5%
grade 5 events	1502	6743	1704	6837	2047	1872
	0%	1%	0%	1%	1%	1%
grade 6 events	16736	97501	24428	122074	24097	22095
	10%	27%	13%	31%	13%	13%
grade 7 events	22774	52609	22981	45831	25546	22577
	14%	14%	12%	11%	13%	13%

2.2 Compared Parameters

Parameter	Planned	Actual	Parameter	Planned	Actual
Instrument	ACIS	ACIS	Obspar format version number	6	6
Detector	ACIS-456789	ACIS-456789	Obspar file type	PREDICTED	ACTUAL
Grating	NONE	NONE	Obspar update status	NONE	UPDATED
Data mode	FAINT	FAINT	On-chip summing requested	N	N
Observation mode	SECONDARY	SECONDARY	Subarray requested	NONE	NONE
Pointing RA	0	86.11729247593018	Alternating exposures requested	N	N
Pointing Dec	0	22.35629740133592	Primary exposure time	0.000000	3.2
Pointing Roll	0.0	271.0754637074759			
SIM focus pos (mm)	-0.684267	-0.6828225247311905			
SIM defocus (mm)	0	0.8505141146731063			
SIM translation stage pos (mm)	-190.132523	250.466033080201			
SIM translation stage offset (mm)	0	-0.01005468664627074			
Observation start time	166768208.820298	166768207.79559			
Observation start date	2003-04-15T04:30:09	2003-04-15T04:30:07			
Observation end time	166807757.421968	166807756.39726			
Observation end date	2003-04-15T15:29:17	2003-04-15T15:29:16			
Read mode	TIMED	TIMED			

2.3 Aspect

2.4 Star Slots

2.5 FID Slots

A Summary

A.1 Status

V&V Scientist	Beth Sundheim
V&V Date (YYYY-MM-DD)	2006.08.06
V&V Edition	1
V&V Disposition and Status	OK
V&V Charge Time	7.78879997

A.2 Comments