

# V&V Reference Report

## L2 ASCDS Version : 8.4.5

Observation 60557 - L2 Version 3  
Chandra X-Ray Center

L2 Processing Date : Nov 4 2012

## Contents

<b>1</b>	<b>Front</b>	<b>2</b>
<b>2</b>	<b>OBI</b>	<b>3</b>
2.1	OBI . . . . .	3
2.1.1	Images . . . . .	3
2.1.2	Bias . . . . .	3
2.1.3	Parameters . . . . .	4
2.1.4	Events . . . . .	4
2.2	Compared Parameters . . . . .	5
2.3	Star Slots . . . . .	6
2.4	FID Slots . . . . .	6
<b>A</b>	<b>Summary</b>	<b>7</b>
A.1	Status . . . . .	7
A.2	Comments . . . . .	7

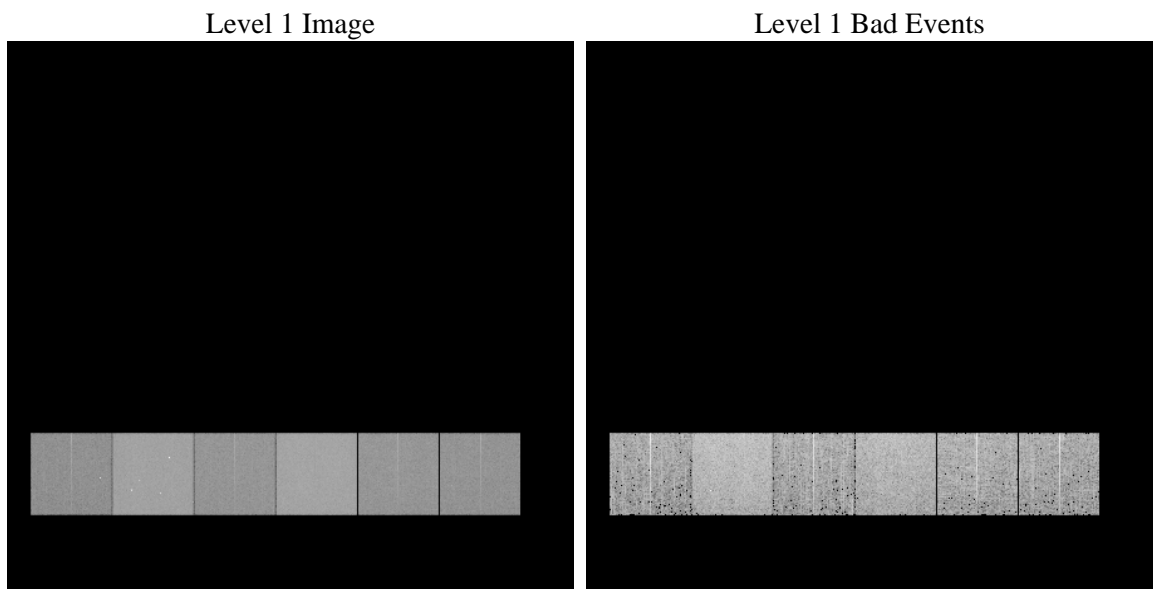
# 1 Front

seq_num	&#160	Sequence number
obs_id	60557	Observation id
title	ACIS-456789 diagnostics	Proposal title
observer	CHANDRA engineering request/realtime commanding	Principal investig
object	&#160	Source name
dtcycle	0	&#160
cycle	P	events from which exps? Prim/Second/Both
ra_targ	0.0	Observer's specified target RA [deg]
dec_targ	0.0	Observer's specified target Dec [deg]
ra_nom	300.04165118125	Nominal RA [deg]
dec_nom	-52.012720321311	Nominal Dec [deg]
roll_nom	300.77495155335	Nominal Roll [deg]
revision	3	Processing version of data
ontime	7803.4768654406	Sum of GTIs [s]
livetime	7704.6645426807	Livetime [s]
ontime4	3943.5983346999	Sum of GTIs [s]
ontime5	7803.5179054439	Sum of GTIs [s]
ontime6	4466.598139137	Sum of GTIs [s]
ontime7	7803.4768654406	Sum of GTIs [s]
ontime8	4510.8120694757	Sum of GTIs [s]
ontime9	4303.1848136187	Sum of GTIs [s]
l2events	1149858	Number of level 2 events

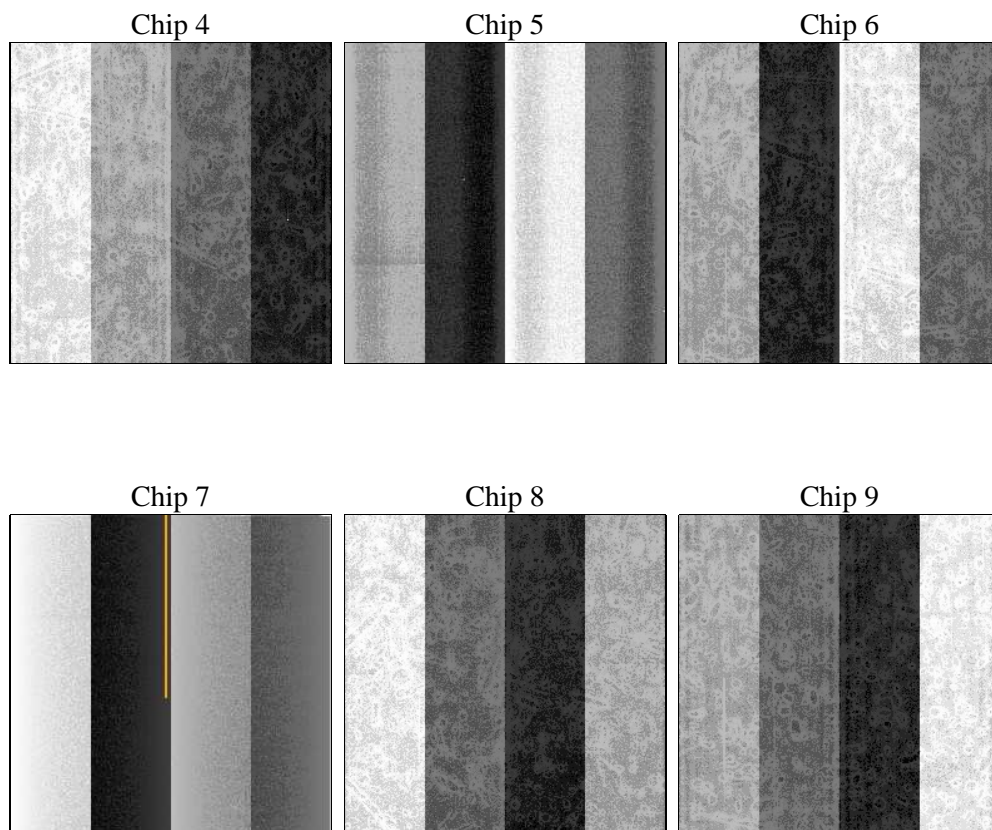
## 2 OBI

### 2.1 OBI

#### 2.1.1 Images



#### 2.1.2 Bias



### 2.1.3 Parameters

obi_num	0	Obi number	sched_exp_time	0.0	[s] Scheduled observation exposure time
ascdsver	8.4.5	Processing system revision	ontime	7803.4768654406	Sum of GTIs [s]
caldsver	4.5.2	&#160	ontime4	3943.5983346999	Sum of GTIs [s]
date	2012-11-04T02:11:48	Date and time of file creation	ontime5	7803.5179054439	Sum of GTIs [s]
revision	3	Processing version of data	ontime6	4466.598139137	Sum of GTIs [s]
			ontime7	7803.4768654406	Sum of GTIs [s]
			ontime8	4510.8120694757	Sum of GTIs [s]
			ontime9	4303.1848136187	Sum of GTIs [s]
			l1events	1419458	Number of level 1 events

### 2.1.4 Events

	ccd 4	ccd 5	ccd 6	ccd 7	ccd 8	ccd 9		ccd 4	ccd 5	ccd 6	ccd 7	ccd 8	ccd 9
level 1 events	167972	316627	200826	341132	206195	186706	grade 0 events	81290	65921	93449	74893	95421	87481
rejected events	28218	48175	30387	40182	32805	28749		48%	20%	46%	21%	46%	46%
rejected %	16%	15%	15%	11%	15%	15%	grade 1 events	576	343	431	212	445	446
								0%	0%	0%	0%	0%	0%
							grade 2 events	22570	93749	29652	66918	30217	27203
								13%	29%	14%	19%	14%	14%
							grade 3 events	9161	16886	10362	30323	11309	10076
								5%	5%	5%	8%	5%	5%
							grade 4 events	9213	16895	10534	30273	11191	9969
								5%	5%	5%	8%	5%	5%
							grade 5 events	1786	8139	2079	7693	2402	2062
								1%	2%	1%	2%	1%	1%
							grade 6 events	17520	75001	26551	98543	25252	23228
								10%	23%	13%	28%	12%	12%
							grade 7 events	25856	39693	27768	32277	29958	26241
								15%	12%	13%	9%	14%	14%

## 2.2 Compared Parameters

Parameter	Planned	Actual	Parameter	Planned	Actual
Instrument	ACIS	ACIS	Obspar format version number	7	7
Detector	ACIS-456789	ACIS-456789	Obspar file type	PREDICTED	ACTUAL
Grating	NONE	NONE	Obspar update status	NONE	UPDATED
Data mode	FAINT	FAINT	On-chip summing requested	N	N
Observation mode	SECONDARY	SECONDARY	Subarray requested	NONE	NONE
[deg] Pointing RA	0	300.0416511812467	Alternating exposures requested	N	N
[deg] Pointing Dec	0	-52.01272032131117	[s] Primary exposure time	0.000000	3.2
[deg] Pointing Roll	0.0	300.7749515533528			
[mm] SIM focus pos	-0.684267	-0.6828225247311905			
[mm] SIM defocus	0	0.8505141146731063			
[mm] SIM translation stage pos	-190.132523	250.466033080201			
[mm] SIM translation stage offset	0	-0.01005468664627074			
[s] Observation start time (MET)	179789344.024243	179789342.99952			
Observation start date	2003-09-12T21:29:04	2003-09-12T21:29:02			
[s] Observation end time (MET)	179829255.475955	179829254.45123			
Observation end date	2003-09-13T08:34:15	2003-09-13T08:34:14			
Read mode	TIMED	TIMED			

## **2.3 Star Slots**

## **2.4 FID Slots**

## A Summary

### A.1 Status

V&V Scientist	Jen Lauer
V&V Date (YYYY-MM-DD)	2012.12.06
V&V Edition	1
V&V Disposition and Status	OK
V&V Charge Time	7.8034768654406

### A.2 Comments