

V&V Reference Report

L2 ASCDS Version : 7.6.8

Observation 60447 - L2 Version 001
Chandra X-Ray Center

L2 Processing Date : Jun 22 2006

Contents

1	Front	2
2	OBI	3
2.1	OBI	3
2.1.1	Images	3
2.1.2	Bias	3
2.1.3	Parameters	4
2.1.4	Events	4
2.2	Compared Parameters	5
2.3	Aspect	6
2.4	Star Slots	8
2.5	FID Slots	8
A	Summary	9
A.1	Status	9
A.2	Comments	9

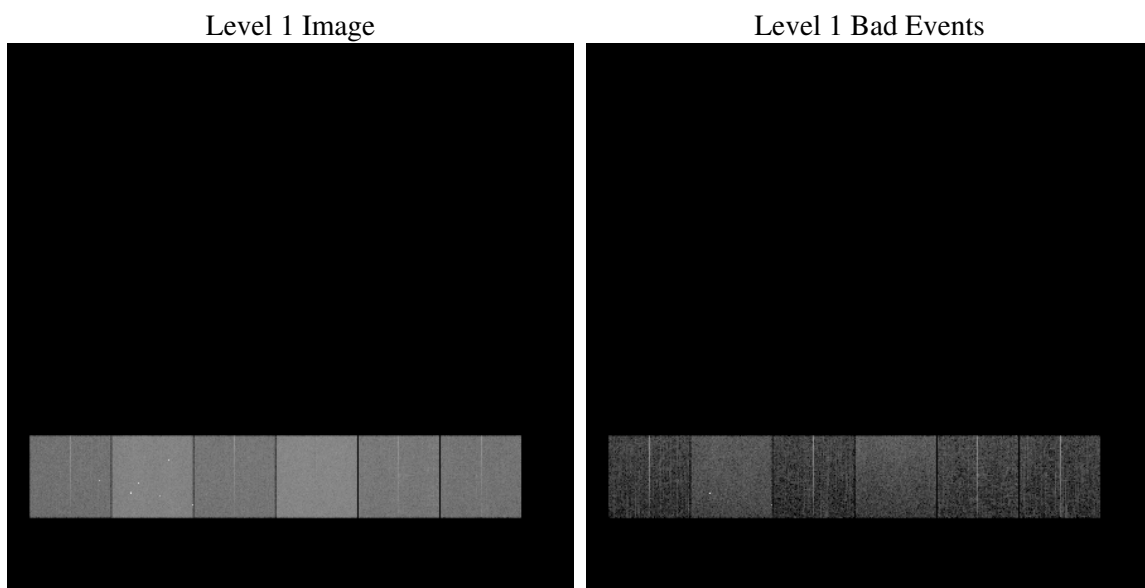
1 Front

seq_num	
obs_id	60447
title	ACIS-456789 diagnostics
observer	CHANDRA engineering request/realtime commanding
object	
dtcycle	0
cycle	P
ra_targ	0.0
dec_targ	0.0
ra_nom	130.93741335255
dec_nom	65.010860653763
roll_nom	124.82679710349
revision	2
ontime	8462.712608397
livetime	8355.5526457157
ontime4	4878.3115437031
ontime5	8462.7536484003
ontime6	5286.6344535351
ontime7	8462.712608397
ontime8	5481.1765527129
ontime9	5066.1244273484
l2events	1208677

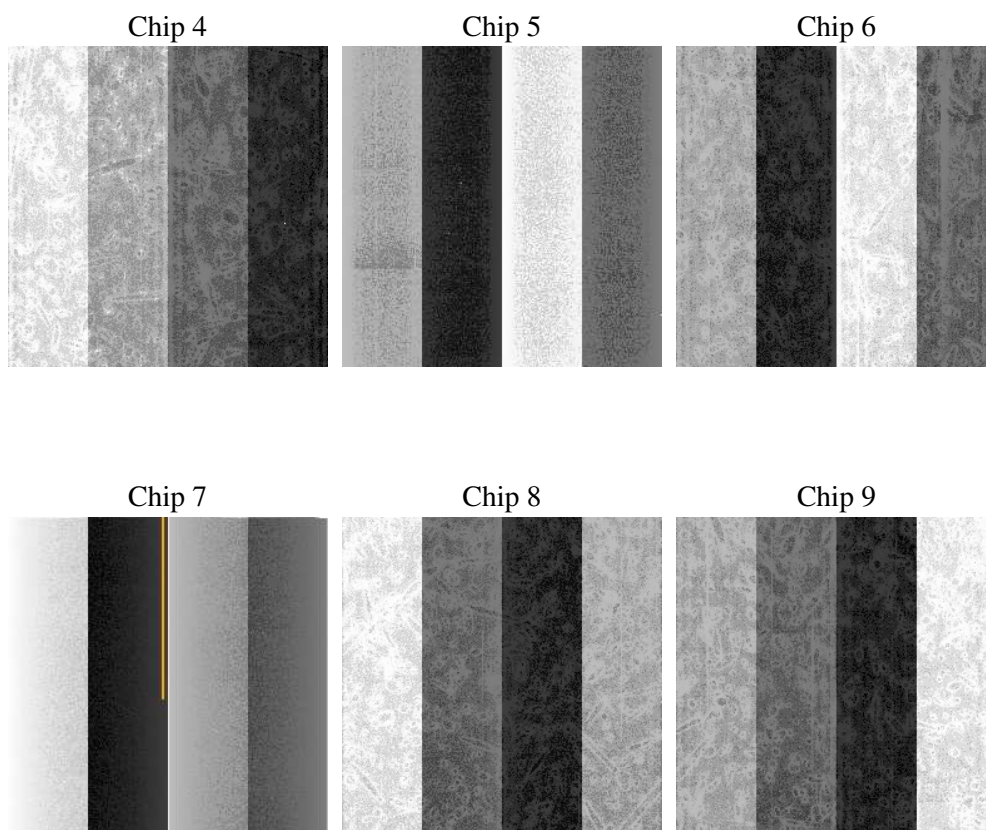
2 OBI

2.1 OBI

2.1.1 Images



2.1.2 Bias



2.1.3 Parameters

obi_num	0
ascdsver	7.6.8
caldbver	3.2.2
date	2006-06-22T16:59:32
revision	2

sched_exp_time	0.0
ontime	8465.5087579191
ontime4	4880.9845732152
ontime5	8465.5087579191
ontime6	5289.3485230505
ontime7	8465.5087579191
ontime8	5483.8085422516
ontime9	5068.9616168737
l1events	1534550

2.1.4 Events

	ccd 4	ccd 5	ccd 6	ccd 7	ccd 8	ccd 9
level 1 events	195272	326238	222214	347716	235568	207542
rejected events	34436	62328	33696	54471	38781	35059
rejected %	17%	19%	15%	15%	16%	16%

	ccd 4	ccd 5	ccd 6	ccd 7	ccd 8	ccd 9
grade 0 events	93285	31660	103009	51663	108416	95159
	47%	9%	46%	14%	46%	45%
grade 1 events	673	215	445	127	498	525
	0%	0%	0%	0%	0%	0%
grade 2 events	25940	124986	32241	88802	34343	29817
	13%	38%	14%	25%	14%	14%
grade 3 events	10553	8503	11578	21614	12565	10927
	5%	2%	5%	6%	5%	5%
grade 4 events	10583	8379	11899	20850	12658	10899
	5%	2%	5%	5%	5%	5%
grade 5 events	2097	7162	2376	6952	2896	2430
	1%	2%	1%	1%	1%	1%
grade 6 events	20587	90482	29903	110425	28904	25782
	10%	27%	13%	31%	12%	12%
grade 7 events	31554	54851	30763	47283	35288	32003
	16%	16%	13%	13%	14%	15%

2.2 Compared Parameters

Parameter	Planned	Actual	Parameter	Planned	Actual
Instrument	ACIS	ACIS	Obspar format version number	6	6
Detector	ACIS-456789	ACIS-456789	Obspar file type	PREDICTED	ACTUAL
Grating	NONE	NONE	Obspar update status	NONE	UPDATED
Data mode	FAINT	FAINT	On-chip summing requested	N	N
Observation mode	SECONDARY	SECONDARY	Subarray requested	NONE	NONE
Pointing RA	0	130.9374133525507	Alternating exposures requested	N	N
Pointing Dec	0	65.01086065376271	Primary exposure time	0.000000	3.2
Pointing Roll	0.0	124.8267971034901			
SIM focus pos (mm)	-0.684267	-0.7809083437167272			
SIM defocus (mm)	0	0.7524282956875696			
SIM translation stage pos (mm)	-190.132523	250.466033080201			
SIM translation stage offset (mm)	0	-0.01005468664627074			
Observation start time	188278857.690663	188278856.66595			
Observation start date	2003-12-20T03:40:58	2003-12-20T03:40:56			
Observation end time	188302977.991711	188302976.967			
Observation end date	2003-12-20T10:22:58	2003-12-20T10:22:56			
Read mode	TIMED	TIMED			

2.3 Aspect

2.4 Star Slots

2.5 FID Slots

A Summary

A.1 Status

V&V Scientist	Jen Lauer
V&V Date (YYYY-MM-DD)	2006.06.22
V&V Edition	1
V&V Disposition and Status	OK
V&V Charge Time	8.4627126

A.2 Comments