

V&V Reference Report

L2 ASCDS Version : 7.6.7.2

Observation 60387 - L2 Version 001
Chandra X-Ray Center

L2 Processing Date : Jun 4 2006

Contents

1	Front	2
2	OBI	3
2.1	OBI	3
2.1.1	Images	3
2.1.2	Bias	3
2.1.3	Parameters	4
2.1.4	Events	4
2.2	Compared Parameters	5
2.3	Aspect	6
2.4	Star Slots	8
2.5	FID Slots	8
A	Summary	9
A.1	Status	9
A.2	Comments	9

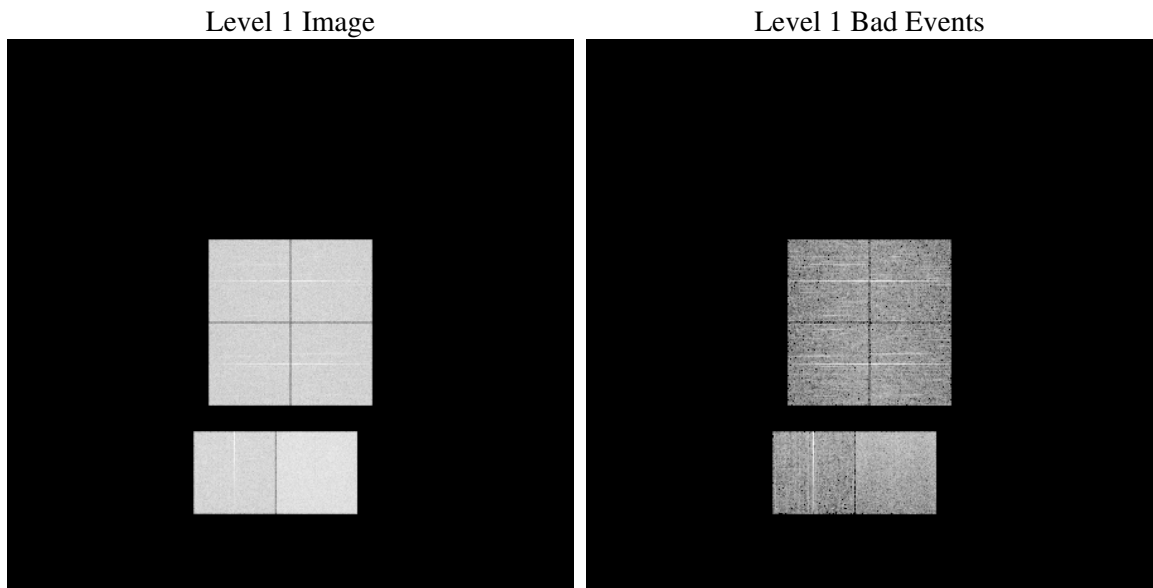
1 Front

seq_num	
obs_id	60387
title	ACIS-012367 diagnostics
observer	CHANDRA engineering request/realtime commanding
object	
dtcycle	0
cycle	P
ra_targ	0.0
dec_targ	0.0
ra_nom	148.99058360695
dec_nom	14.027089594218
roll_nom	75.743848367657
revision	2
ontime	7804.7999709249
livetime	7705.9708942067
ontime0	5500.4630174339
ontime1	5679.9702818394
ontime2	5409.7161069512
ontime3	5526.3909489214
ontime6	5882.8991878033
ontime7	7804.7999709249
l2events	1140903

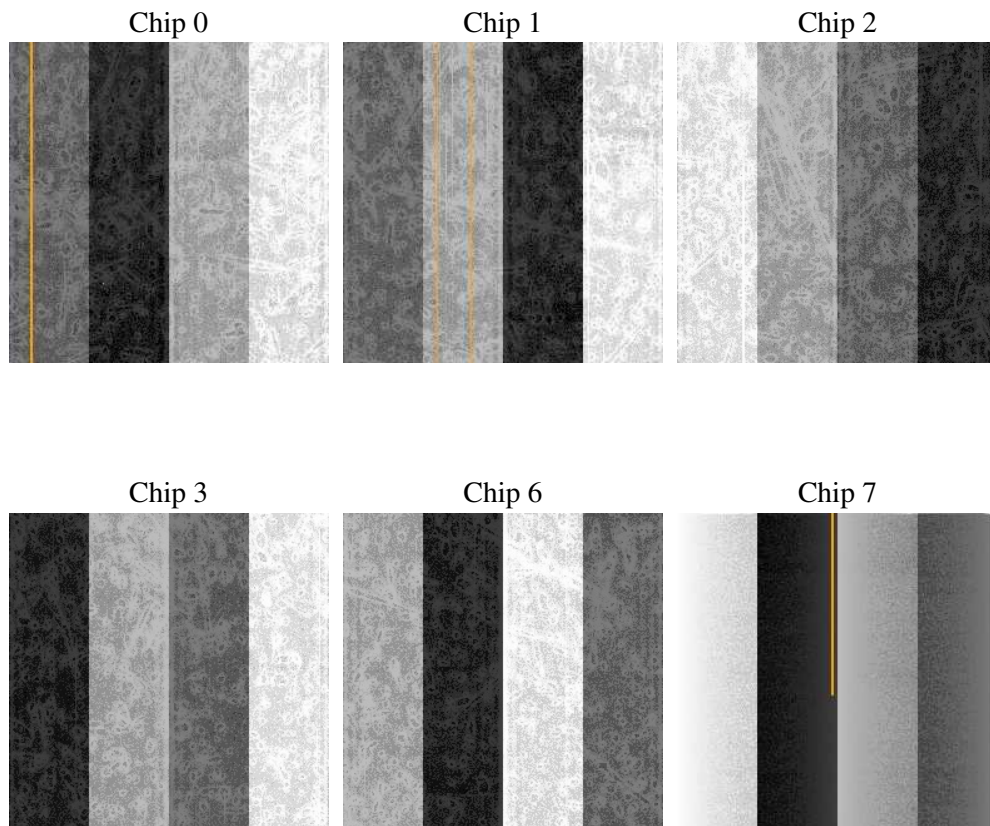
2 OBI

2.1 OBI

2.1.1 Images



2.1.2 Bias



2.1.3 Parameters

obi_num	0
ascdsver	7.6.7.2
caldbver	3.2.2
date	2006-06-05T00:22:49
revision	2

sched_exp_time	0.0
ontime	7807.5882110894
ontime0	5503.2512575984
ontime1	5681.5055209994
ontime2	5412.5043471158
ontime3	5529.179189086
ontime6	5885.6874279678
ontime7	7807.5882110894
l1events	1418269

2.1.4 Events

	ccd 0	ccd 1	ccd 2	ccd 3	ccd 6	ccd 7
level 1 events	213215	220177	213769	218246	239388	313474
rejected events	32957	33209	33804	34818	36746	50027
rejected %	15%	15%	15%	15%	15%	15%

	ccd 0	ccd 1	ccd 2	ccd 3	ccd 6	ccd 7
grade 0 events	99499	102894	100991	103496	110466	47279
	46%	46%	47%	47%	46%	15%
grade 1 events	490	450	529	563	465	121
	0%	0%	0%	0%	0%	0%
grade 2 events	31649	33167	30373	31558	35067	79786
	14%	15%	14%	14%	14%	25%
grade 3 events	11638	11747	11722	11777	12614	19461
	5%	5%	5%	5%	5%	6%
grade 4 events	11522	11934	11824	11896	12334	18922
	5%	5%	5%	5%	5%	6%
grade 5 events	2202	2262	2097	2441	2595	6346
	1%	1%	0%	1%	1%	2%
grade 6 events	25950	27226	25055	24804	32161	97999
	12%	12%	11%	11%	13%	31%
grade 7 events	30265	30497	31178	31711	33686	43560
	14%	13%	14%	14%	14%	13%

2.2 Compared Parameters

Parameter	Planned	Actual	Parameter	Planned	Actual
Instrument	ACIS	ACIS	Obspar format version number	6	6
Detector	ACIS-012367	ACIS-012367	Obspar file type	PREDICTED	ACTUAL
Grating	NONE	NONE	Obspar update status	NONE	UPDATED
Data mode	FAINT	FAINT	On-chip summing requested	N	N
Observation mode	SECONDARY	SECONDARY	Subarray requested	NONE	NONE
Pointing RA	0	148.9905836069475	Alternating exposures requested	N	N
Pointing Dec	0	14.02708959421795	Primary exposure time	0.000000	3.2
Pointing Roll	0.0	75.74384836765668			
SIM focus pos (mm)	-0.782348	-0.6828225247311905			
SIM defocus (mm)	0	0.8505141146731063			
SIM translation stage pos (mm)	-233.592463	250.466033080201			
SIM translation stage offset (mm)	0	-0.01005468664627074			
Observation start time	192127185.508313	192127184.48361			
Observation start date	2004-02-02T16:39:46	2004-02-02T16:39:44			
Observation end time	192164561.109946	192164560.08524			
Observation end date	2004-02-03T03:02:41	2004-02-03T03:02:40			
Read mode	TIMED	TIMED			

2.3 Aspect

2.4 Star Slots

2.5 FID Slots

A Summary

A.1 Status

V&V Scientist	Jen Lauer
V&V Date (YYYY-MM-DD)	2006.06.05
V&V Edition	1
V&V Disposition and Status	OK
V&V Charge Time	7.80479997

A.2 Comments