

V&V Reference Report

L2 ASCDS Version : 7.6.7.2

Observation 60277 - L2 Version 001
Chandra X-Ray Center

L2 Processing Date : May 25 2006

Contents

1	Front	2
2	OBI	3
2.1	OBI	3
2.1.1	Images	3
2.1.2	Bias	3
2.1.3	Parameters	4
2.1.4	Events	4
2.2	Compared Parameters	5
2.3	Aspect	6
2.4	Star Slots	8
2.5	FID Slots	8
A	Summary	9
A.1	Status	9
A.2	Comments	9

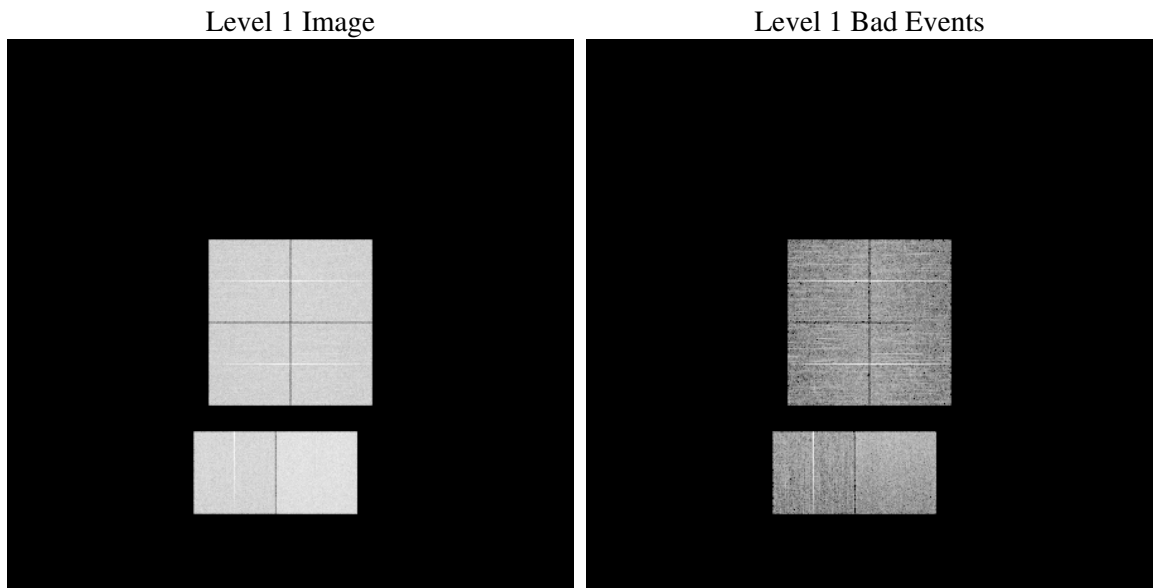
1 Front

seq_num	
obs_id	60277
title	ACIS-012367 diagnostics
observer	CHANDRA engineering request/realtime commanding
object	
dtcycle	0
cycle	P
ra_targ	0.0
dec_targ	0.0
ra_nom	330.99447441449
dec_nom	53.028387687421
roll_nom	63.821119190364
revision	2
ontime	8460.6474002302
livetime	8353.5135884582
ontime0	6104.5098078549
ontime1	6308.7313047051
ontime2	5871.2430551946
ontime3	5945.6205342114
ontime6	6503.259958148
ontime7	8460.6474002302
l2events	1191629

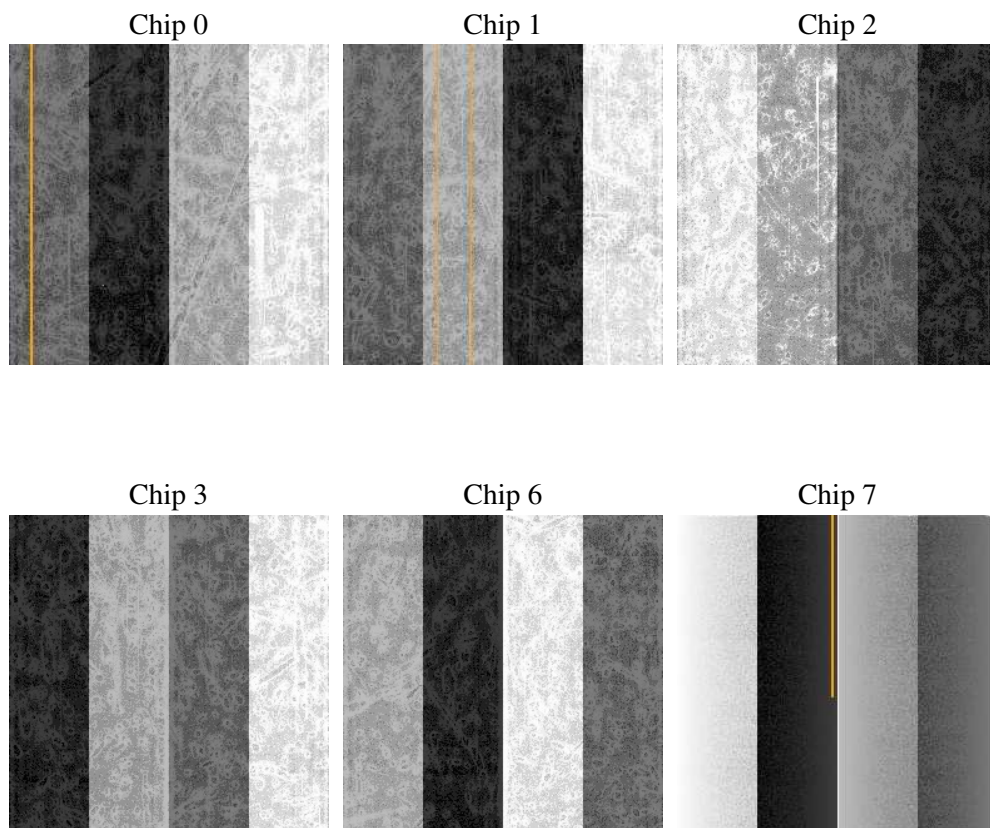
2 OBI

2.1 OBI

2.1.1 Images



2.1.2 Bias



2.1.3 Parameters

obi_num	0
ascdsver	7.6.7.2
caldbver	3.2.2
date	2006-05-25T18:25:19
revision	2

sched_exp_time	0.0
ontime	8462.246712476
ontime0	6106.0680800974
ontime1	6310.2485369444
ontime2	5872.7192474306
ontime3	5947.2608864605
ontime6	6504.706702143
ontime7	8462.246712476
l1events	1533982

2.1.4 Events

	ccd 0	ccd 1	ccd 2	ccd 3	ccd 6	ccd 7
level 1 events	232706	239782	228944	233857	260512	338181
rejected events	42748	42078	43980	45616	47754	61773
rejected %	18%	17%	19%	19%	18%	18%

	ccd 0	ccd 1	ccd 2	ccd 3	ccd 6	ccd 7
grade 0 events	104282	108258	103365	105422	115501	47342
	44%	45%	45%	45%	44%	13%
grade 1 events	614	564	650	669	610	122
	0%	0%	0%	0%	0%	0%
grade 2 events	33404	35249	31328	32148	36572	84124
	14%	14%	13%	13%	14%	24%
grade 3 events	12313	12469	11895	12368	13498	19340
	5%	5%	5%	5%	5%	5%
grade 4 events	12413	12752	12196	12342	13099	19406
	5%	5%	5%	5%	5%	5%
grade 5 events	2785	2926	2556	2927	3251	7476
	1%	1%	1%	1%	1%	2%
grade 6 events	27546	28976	26180	26075	34088	106196
	11%	12%	11%	11%	13%	31%
grade 7 events	39349	38588	40774	41906	43893	54175
	16%	16%	17%	17%	16%	16%

2.2 Compared Parameters

Parameter	Planned	Actual	Parameter	Planned	Actual
Instrument	ACIS	ACIS	Obspar format version number	6	6
Detector	ACIS-012367	ACIS-012367	Obspar file type	PREDICTED	ACTUAL
Grating	NONE	NONE	Obspar update status	NONE	UPDATED
Data mode	FAINT	FAINT	On-chip summing requested	N	N
Observation mode	SECONDARY	SECONDARY	Subarray requested	NONE	NONE
Pointing RA	0	330.9944744144884	Alternating exposures requested	N	N
Pointing Dec	0	53.02838768742056	Primary exposure time	0.000000	3.2
Pointing Roll	0.0	63.82111919036359			
SIM focus pos (mm)	-0.782348	-1.038866356238299			
SIM defocus (mm)	0	0.4944702831659975			
SIM translation stage pos (mm)	-233.592463	250.4635187648994			
SIM translation stage offset (mm)	0	-0.007540371344731511			
Observation start time	198336717.780919	198336716.75592			
Observation start date	2004-04-14T13:31:58	2004-04-14T13:31:56			
Observation end time	198359136.581906	198359135.55691			
Observation end date	2004-04-14T19:45:37	2004-04-14T19:45:35			
Read mode	TIMED	TIMED			

2.3 Aspect

2.4 Star Slots

2.5 FID Slots

A Summary

A.1 Status

V&V Scientist	Beth Sundheim
V&V Date (YYYY-MM-DD)	2006.05.25
V&V Edition	1
V&V Disposition and Status	OK
V&V Charge Time	8.4606474

A.2 Comments