

# V&V Reference Report

## L2 ASCDS Version : 8.5.1.1

Observation 59617 - L2 Version 3  
Chandra X-Ray Center

L2 Processing Date : Dec 24 2012

## Contents

<b>1</b>	<b>Front</b>	<b>2</b>
<b>2</b>	<b>OBI</b>	<b>3</b>
2.1	OBI . . . . .	3
2.1.1	Images . . . . .	3
2.1.2	Bias . . . . .	3
2.1.3	Parameters . . . . .	4
2.1.4	Events . . . . .	4
2.2	Compared Parameters . . . . .	5
2.3	Star Slots . . . . .	6
2.4	FID Slots . . . . .	6
<b>A</b>	<b>Summary</b>	<b>7</b>
A.1	Status . . . . .	7
A.2	Comments . . . . .	7

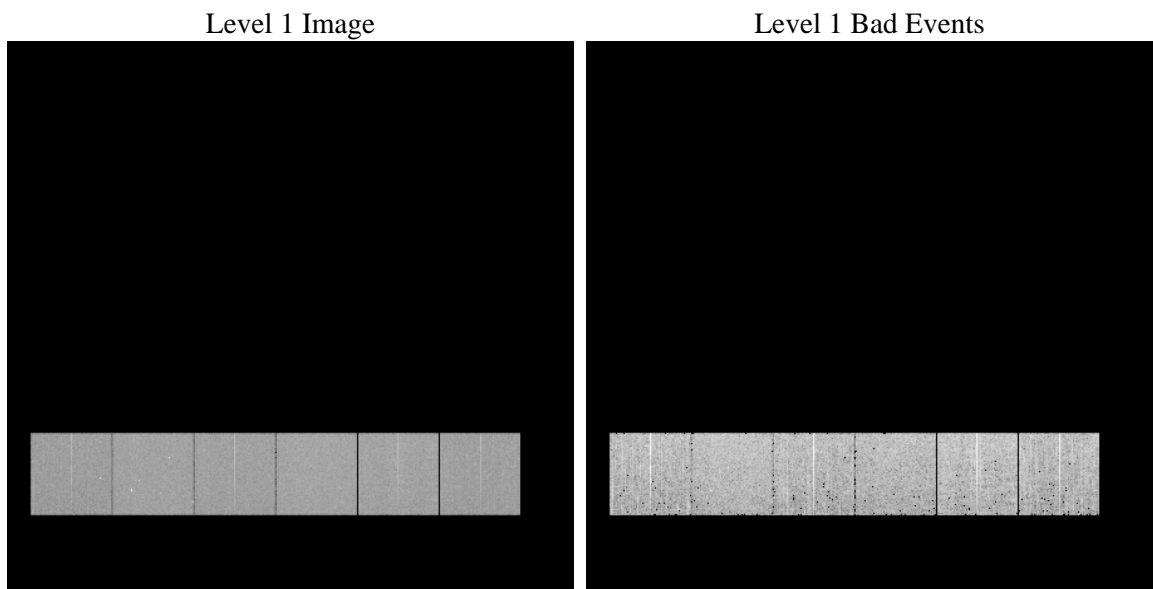
# 1 Front

seq_num	&#160	Sequence number
obs_id	59617	Observation id
title	ACIS-456789 diagnostics	Proposal title
observer	CHANDRA engineering request/realtime commanding	Principal investig
object	&#160	Source name
dtcycle	0	&#160
cycle	P	events from which exps? Prim/Second/Both
ra_targ	0.0	Observer's specified target RA [deg]
dec_targ	0.0	Observer's specified target Dec [deg]
ra_nom	241.03595417093	Nominal RA [deg]
dec_nom	-41.009180810393	Nominal Dec [deg]
roll_nom	308.50995657094	Nominal Roll [deg]
revision	3	Processing version of data
ontime	5353.5999800563	Sum of GTIs [s]
livetime	5285.8094735579	Livetime [s]
ontime4	4588.7290185094	Sum of GTIs [s]
ontime5	5353.5999800563	Sum of GTIs [s]
ontime6	4941.995492816	Sum of GTIs [s]
ontime7	5353.5999800563	Sum of GTIs [s]
ontime8	5097.29500857	Sum of GTIs [s]
ontime9	4809.1154400408	Sum of GTIs [s]
l2events	702942	Number of level 2 events

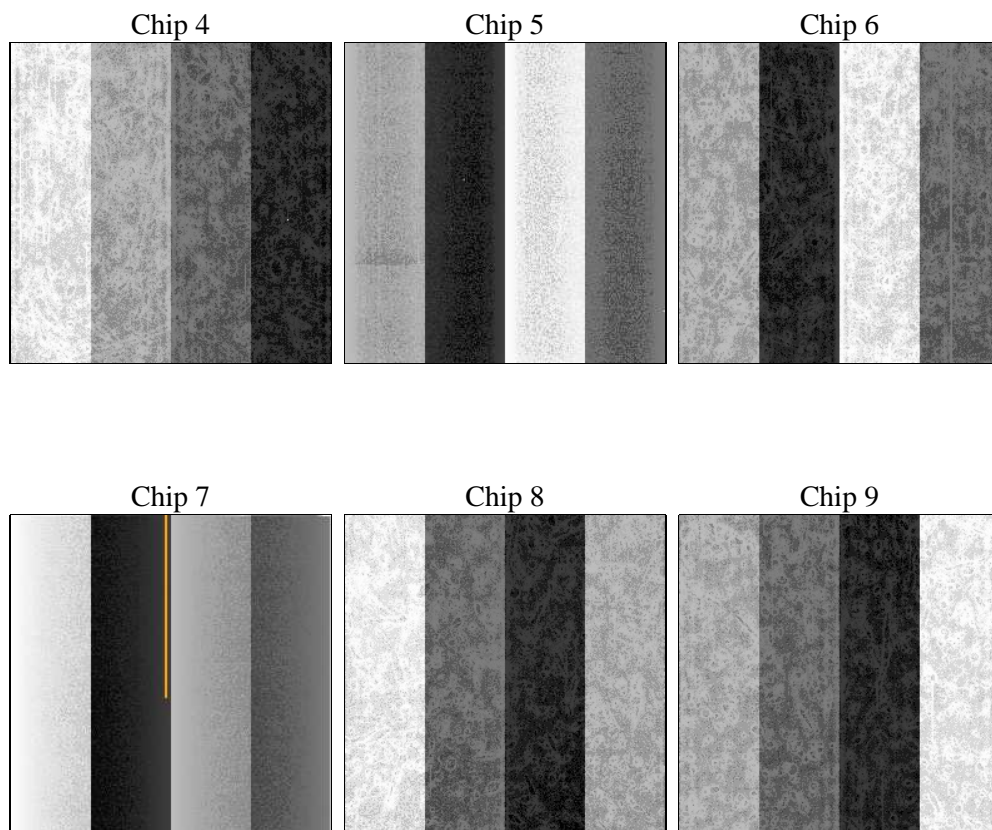
## 2 OBI

### 2.1 OBI

#### 2.1.1 Images



#### 2.1.2 Bias



### 2.1.3 Parameters

obi_num	0	Obi number	sched_exp_time	0.0	[s] Scheduled observation exposure time
ascdsver	8.5.1.1	Processing system revision	ontime	5353.5999800563	Sum of GTIs [s]
caldsver	4.5.5	&#160	ontime4	4588.7290185094	Sum of GTIs [s]
date	2012-12-24T18:58:14	Date and time of file creation	ontime5	5353.5999800563	Sum of GTIs [s]
revision	3	Processing version of data	ontime6	4941.995492816	Sum of GTIs [s]
			ontime7	5353.5999800563	Sum of GTIs [s]
			ontime8	5097.29500857	Sum of GTIs [s]
			ontime9	4809.1154400408	Sum of GTIs [s]
			l1events	971695	Number of level 1 events

### 2.1.4 Events

	ccd 4	ccd 5	ccd 6	ccd 7	ccd 8	ccd 9		ccd 4	ccd 5	ccd 6	ccd 7	ccd 8	ccd 9
level 1 events	143457	167558	158876	177178	172656	151970	grade 0 events	61996	27894	66739	34390	70089	63123
rejected events	36851	37162	35757	33200	42357	36848		43%	16%	42%	19%	40%	41%
rejected %	25%	22%	22%	18%	24%	24%	grade 1 events	473	208	332	106	365	400
								0%	0%	0%	0%	0%	0%
							grade 2 events	16933	46903	21389	31879	22904	19824
								11%	27%	13%	17%	13%	13%
							grade 3 events	7084	7595	7716	14484	8478	7479
								4%	4%	4%	8%	4%	4%
							grade 4 events	7044	7422	7688	14077	8719	7332
								4%	4%	4%	7%	5%	4%
							grade 5 events	2172	5720	2350	5851	2871	2531
								1%	3%	1%	3%	1%	1%
							grade 6 events	13628	40650	19655	49225	20109	17447
								9%	24%	12%	27%	11%	11%
							grade 7 events	34127	31166	33007	27166	39121	33834
								23%	18%	20%	15%	22%	22%

## 2.2 Compared Parameters

Parameter	Planned	Actual	Parameter	Planned	Actual
Instrument	ACIS	ACIS	Obspar format version number	7	7
Detector	ACIS-456789	ACIS-456789	Obspar file type	PREDICTED	ACTUAL
Grating	NONE	NONE	Obspar update status	NONE	UPDATED
Data mode	FAINT	FAINT	On-chip summing requested	N	N
Observation mode	SECONDARY	SECONDARY	Subarray requested	NONE	NONE
[deg] Pointing RA	0	241.0359541709347	Alternating exposures requested	N	N
[deg] Pointing Dec	0	-41.00918081039267	[s] Primary exposure time	3.2	3.2
[deg] Pointing Roll	0.0	308.5099565709403			
[mm] SIM focus pos	-0.684267	-0.7809083437167272			
[mm] SIM defocus	0	0.7524282956875696			
[mm] SIM translation stage pos	-190.132523	250.466033080201			
[mm] SIM translation stage offset	0	-0.01005468664627074			
[s] Observation start time (MET)	235084201.479413	235084200.45441			
Observation start date	2005-06-13T21:10:01	2005-06-13T21:10:00			
[s] Observation end time (MET)	235095619.979934	235095618.95493			
Observation end date	2005-06-14T00:20:20	2005-06-14T00:20:18			
Read mode	TIMED	TIMED			

## **2.3 Star Slots**

## **2.4 FID Slots**

## A Summary

### A.1 Status

V&V Scientist	Beth Sundheim
V&V Date (YYYY-MM-DD)	2013.01.09
V&V Edition	1
V&V Disposition and Status	OK
V&V Charge Time	5.3535999800563

### A.2 Comments