

V&V Reference Report

L2 ASCDS Version : 7.6.7.1

Observation 59487 - L2 Version 002
Chandra X-Ray Center

L2 Processing Date : Mar 20 2006

Contents

1	Front	2
2	OBI	3
2.1	OBI	3
2.1.1	Images	3
2.1.2	Bias	3
2.1.3	Parameters	4
2.1.4	Events	4
2.2	Compared Parameters	5
2.3	Aspect	6
2.4	Star Slots	8
2.5	FID Slots	8
A	Summary	9
A.1	Status	9
A.2	Comments	9

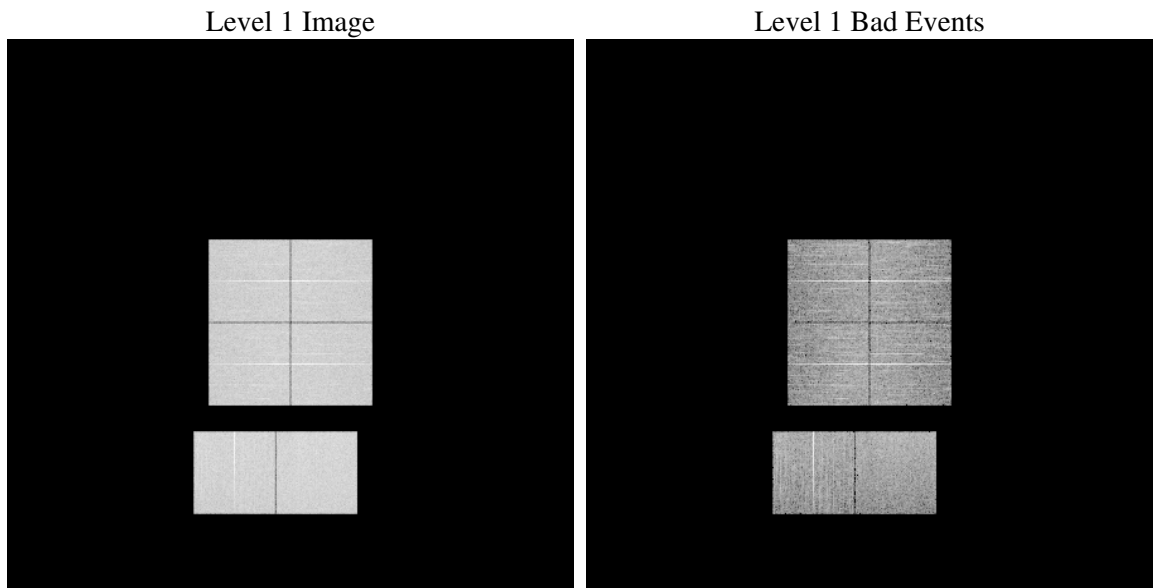
1 Front

seq_num	
obs_id	59487
title	ACIS-012367 diagnostics
observer	CHANDRA engineering request/realtime commanding
object	
dtcycle	0
cycle	P
ra_targ	0.0
dec_targ	0.0
ra_nom	315.02108261373
dec_nom	-27.010150887691
roll_nom	305.09596856147
revision	2
ontime	7800.1042828262
livetime	7701.3346657381
ontime0	7605.6870246828
ontime1	7709.439124763
ontime2	7479.3715018332
ontime3	7612.0869353414
ontime6	7800.2684428096
ontime7	7800.1042828262
l2events	1011322

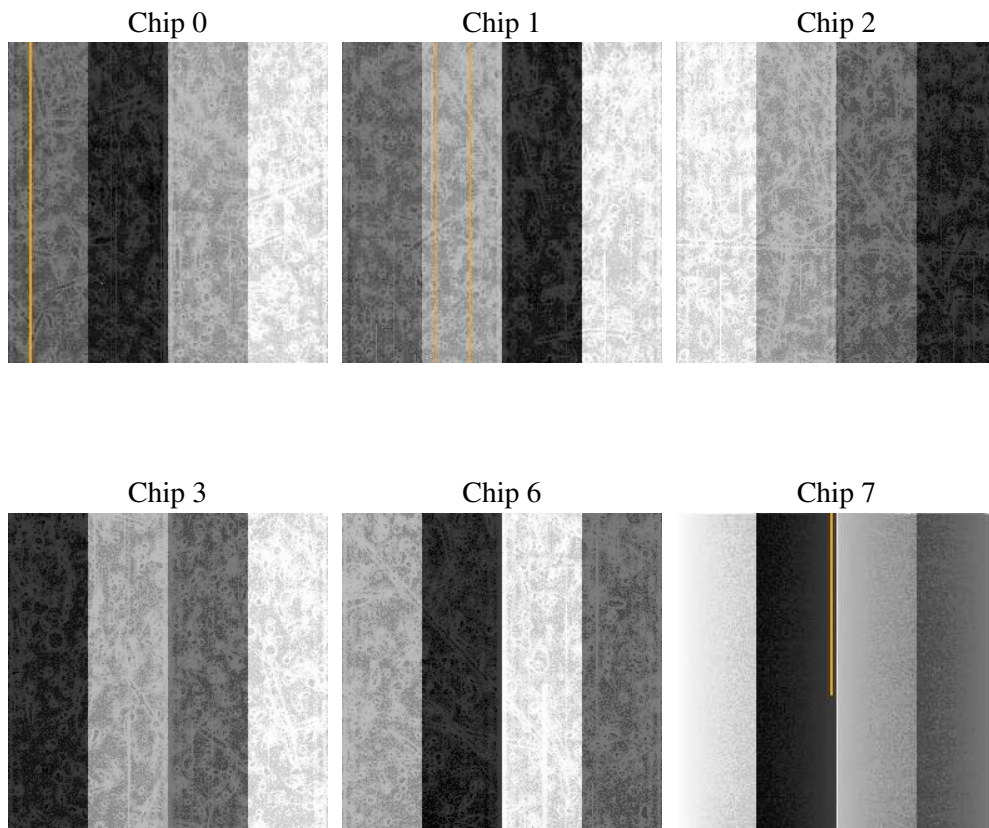
2 OBI

2.1 OBI

2.1.1 Images



2.1.2 Bias



2.1.3 Parameters

obi_num	2
ascdsver	7.6.7.1
caldsver	3.2.1
date	2006-03-20T23:26:35
revision	2

sched_exp_time	0.0
ontime	7801.0950579345
ontime0	7606.6367597878
ontime1	7710.3478198647
ontime2	7480.2391569316
ontime3	7613.118750453
ontime6	7801.0950579345
ontime7	7801.0950579345
l1events	1398076

2.1.4 Events

	ccd 0	ccd 1	ccd 2	ccd 3	ccd 6	ccd 7
level 1 events	222973	227085	227030	228576	242988	249424
rejected events	52055	53795	57321	54940	58875	56766
rejected %	23%	23%	25%	24%	24%	22%

	ccd 0	ccd 1	ccd 2	ccd 3	ccd 6	ccd 7
grade 0 events	93739	93894	94659	97303	99917	32257
	42%	41%	41%	42%	41%	12%
grade 1 events	598	501	641	572	542	130
	0%	0%	0%	0%	0%	0%
grade 2 events	30182	31308	28694	29683	31744	57876
	13%	13%	12%	12%	13%	23%
grade 3 events	11028	11240	11132	11135	11327	13624
	4%	4%	4%	4%	4%	5%
grade 4 events	10923	11129	11046	11333	11613	13307
	4%	4%	4%	4%	4%	5%
grade 5 events	3246	3463	3036	3547	3733	6652
	1%	1%	1%	1%	1%	2%
grade 6 events	25046	25719	24178	24182	29512	75594
	11%	11%	10%	10%	12%	30%
grade 7 events	48211	49831	53644	50821	54600	49984
	21%	21%	23%	22%	22%	20%

2.2 Compared Parameters

Parameter	Planned	Actual	Parameter	Planned	Actual
Instrument	ACIS	ACIS	Obspar format version number	6	6
Detector	ACIS-012367	ACIS-012367	Obspar file type	PREDICTED	ACTUAL
Grating	NONE	NONE	Obspar update status	NONE	UPDATED
Data mode	FAINT	FAINT	On-chip summing requested	N	N
Observation mode	SECONDARY	SECONDARY	Subarray requested	NONE	NONE
Pointing RA	0	315.0210826137295	Alternating exposures requested	N	N
Pointing Dec	0	-27.01015088769073	Primary exposure time	3.2	3.2
Pointing Roll	0.0	305.0959685614728			
SIM focus pos (mm)	-0.782348	-0.6828225247311905			
SIM defocus (mm)	0	0.8505141146731063			
SIM translation stage pos (mm)	-233.592463	250.466033080201			
SIM translation stage offset (mm)	0	-0.01005468664627074			
Observation start time	241707030.18258	241707029.15758			
Observation start date	2005-08-29T12:50:30	2005-08-29T12:50:29			
Observation end time	241722232.983277	241722231.95828			
Observation end date	2005-08-29T17:03:53	2005-08-29T17:03:51			
Read mode	TIMED	TIMED			

2.3 Aspect

2.4 Star Slots

2.5 FID Slots

A Summary

A.1 Status

V&V Scientist	Joy Nichols
V&V Date (YYYY-MM-DD)	2006.03.21
V&V Edition	1
V&V Disposition and Status	OK
V&V Charge Time	7.80010428

A.2 Comments

Second half of observations has significant periods on non-GTI for I chips.