

# V&V Reference Report

## L2 ASCDS Version : 8.4.3

Observation 59157 - L2 Version 2  
Chandra X-Ray Center

L2 Processing Date : Mar 24 2012

## Contents

<b>1</b>	<b>Front</b>	<b>2</b>
<b>2</b>	<b>OBI</b>	<b>3</b>
2.1	OBI . . . . .	3
2.1.1	Images . . . . .	3
2.1.2	Bias . . . . .	3
2.1.3	Parameters . . . . .	4
2.1.4	Events . . . . .	4
2.2	Compared Parameters . . . . .	5
2.3	Star Slots . . . . .	6
2.4	FID Slots . . . . .	6
<b>A</b>	<b>Summary</b>	<b>7</b>
A.1	Status . . . . .	7
A.2	Comments . . . . .	7

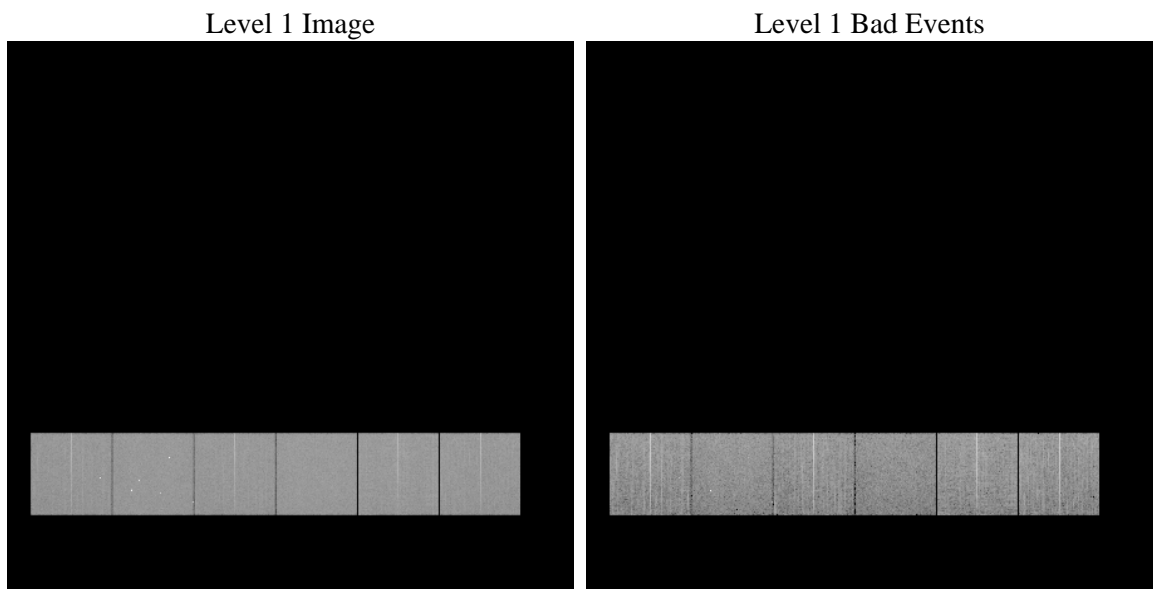
# 1 Front

seq_num	&#160	Sequence number
obs_id	59157	Observation id
title	ACIS-456789 diagnostics	Proposal title
observer	CHANDRA engineering request/realtime commanding	Principal investig
object	&#160	Source name
dtcycle	0	&#160
cycle	P	events from which exps? Prim/Second/Both
ra_targ	0.0	Observer's specified target RA [deg]
dec_targ	0.0	Observer's specified target Dec [deg]
ra_nom	116.52760083716	Nominal RA [deg]
dec_nom	-7.4916494555494	Nominal Dec [deg]
roll_nom	344.10972559762	Nominal Roll [deg]
revision	2	Processing version of data
ontime	8223.1209161878	Sum of GTIs [s]
livetime	8118.994807778	Livetime [s]
ontime4	8060.9485412836	Sum of GTIs [s]
ontime5	8223.0798761845	Sum of GTIs [s]
ontime6	8197.1109340191	Sum of GTIs [s]
ontime7	8223.1209161878	Sum of GTIs [s]
ontime8	8222.9567562044	Sum of GTIs [s]
ontime9	8181.0292020738	Sum of GTIs [s]
l2events	996107	Number of level 2 events

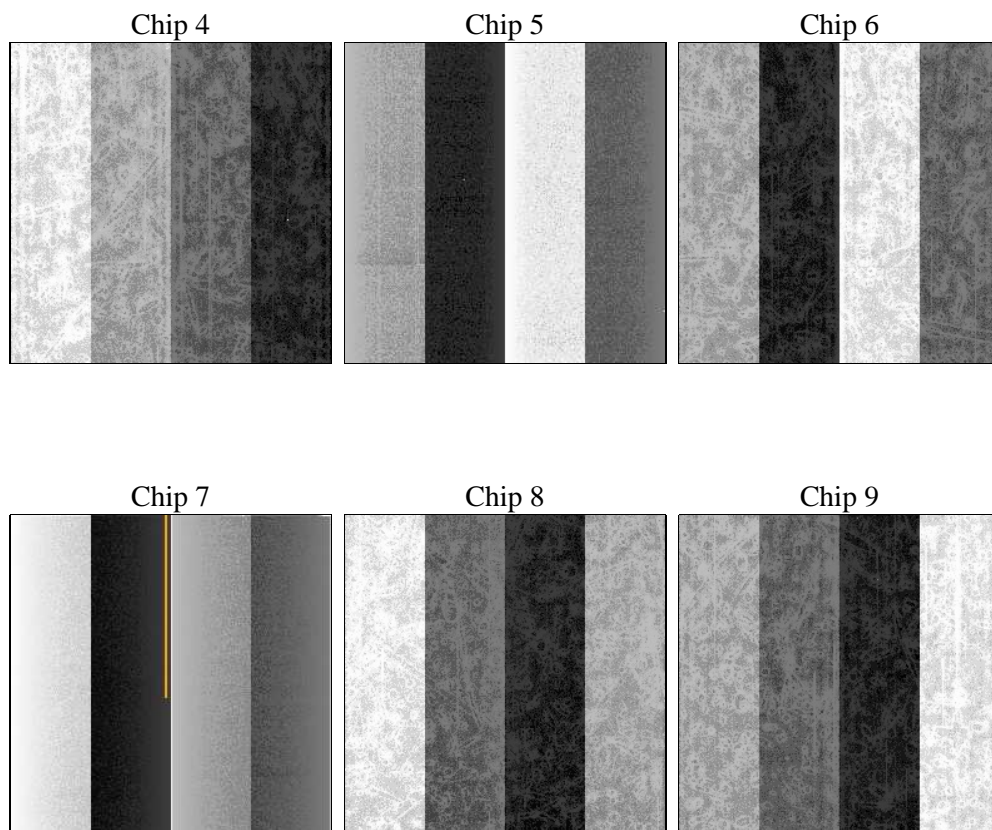
## 2 OBI

### 2.1 OBI

#### 2.1.1 Images



#### 2.1.2 Bias



### 2.1.3 Parameters

obi_num	0	Obi number	sched_exp_time	0.0	[s] Scheduled observation exposure time
ascdsver	8.4.3	Processing system revision	ontime	8223.1209161878	Sum of GTIs [s]
caldsver	4.4.8	&#160	ontime4	8060.9485412836	Sum of GTIs [s]
date	2012-03-24T06:39:26	Date and time of file creation	ontime5	8223.0798761845	Sum of GTIs [s]
revision	2	Processing version of data	ontime6	8197.1109340191	Sum of GTIs [s]
			ontime7	8223.1209161878	Sum of GTIs [s]
			ontime8	8222.9567562044	Sum of GTIs [s]
			ontime9	8181.0292020738	Sum of GTIs [s]
			l1events	1478212	Number of level 1 events

### 2.1.4 Events

	ccd 4	ccd 5	ccd 6	ccd 7	ccd 8	ccd 9		ccd 4	ccd 5	ccd 6	ccd 7	ccd 8	ccd 9
level 1 events	233238	248769	242457	253398	259329	241021	grade 0 events	94620	38580	94834	44778	98408	92735
rejected events	71438	63902	68362	57470	75387	72776		40%	15%	39%	17%	37%	38%
rejected %	30%	25%	28%	22%	29%	30%	grade 1 events	751	266	563	178	618	618
								0%	0%	0%	0%	0%	0%
							grade 2 events	25609	67172	30153	43053	33020	28822
								10%	27%	12%	16%	12%	11%
							grade 3 events	10842	10165	11112	19238	12366	11002
								4%	4%	4%	7%	4%	4%
							grade 4 events	10902	9903	10965	19499	12331	11045
								4%	3%	4%	7%	4%	4%
							grade 5 events	3842	9552	4135	9822	4978	4306
								1%	3%	1%	3%	1%	1%
							grade 6 events	20910	60276	28175	70565	28970	25681
								8%	24%	11%	27%	11%	10%
							grade 7 events	65762	52855	62520	46265	68638	66812
								28%	21%	25%	18%	26%	27%

## 2.2 Compared Parameters

Parameter	Planned	Actual
Instrument	ACIS	ACIS
Detector	ACIS-456789	ACIS-456789
Grating	NONE	NONE
Data mode	FAINT	FAINT
Observation mode	SECONDARY	SECONDARY
[deg] Pointing RA	0	116.527600837158
[deg] Pointing Dec	0	-7.491649455549419
[deg] Pointing Roll	0.0	344.1097255976204
[mm] SIM focus pos	-0.684267	-0.7809083437167272
[mm] SIM defocus	0	0.7524282956875696
[mm] SIM translation stage pos	-190.132523	250.466033080201
[mm] SIM translation stage offset	0	-0.01005468664627074
[s] Observation start time (MET)	254311990.814234	254311989.78924
Observation start date	2006-01-22T10:13:11	2006-01-22T10:13:09
[s] Observation end time (MET)	254335135.315306	254335134.29031
Observation end date	2006-01-22T16:38:55	2006-01-22T16:38:54
Read mode	TIMED	TIMED

Parameter	Planned	Actual
Obspar format version number	7	7
Obspar file type	PREDICTED	ACTUAL
Obspar update status	NONE	UPDATED
On-chip summing requested	N	N
Subarray requested	NONE	NONE
Alternating exposures requested	N	N
[s] Primary exposure time	3.2	3.2

## 2.3 Star Slots

## 2.4 FID Slots

## **A Summary**

### **A.1 Status**

V&V Scientist	Jen Lauer
V&V Date (YYYY-MM-DD)	2012.03.26
V&V Edition	1
V&V Disposition and Status	OK
V&V Charge Time	8.2231209161878

### **A.2 Comments**