

V&V Reference Report

L2 ASCDS Version : 8.4.3

Observation 59137 - L2 Version 2
Chandra X-Ray Center

L2 Processing Date : Mar 25 2012

Contents

1	Front	2
2	OBI	3
2.1	OBI	3
2.1.1	Images	3
2.1.2	Bias	3
2.1.3	Parameters	4
2.1.4	Events	4
2.2	Compared Parameters	5
2.3	Star Slots	6
2.4	FID Slots	6
A	Summary	7
A.1	Status	7
A.2	Comments	7

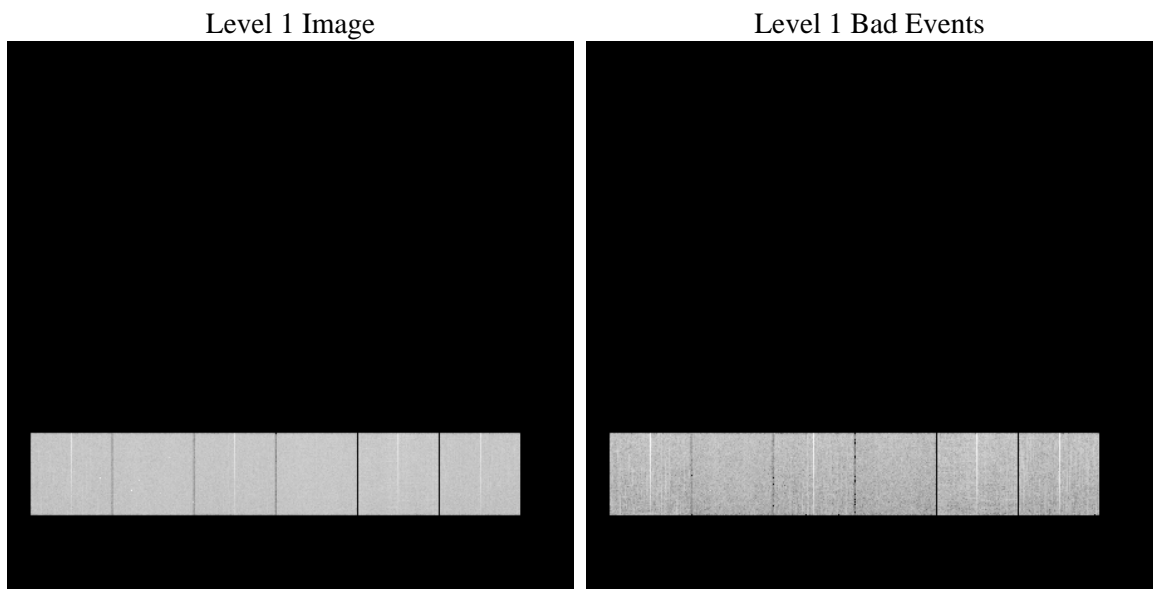
1 Front

seq_num	 	Sequence number
obs_id	59137	Observation id
title	ACIS-456789 diagnostics	Proposal title
observer	CHANDRA engineering request/realtime commanding	Principal investig
object	 	Source name
dtcycle	0	
cycle	P	events from which exps? Prim/Second/Both
ra_targ	0.0	Observer's specified target RA [deg]
dec_targ	0.0	Observer's specified target Dec [deg]
ra_nom	116.02846329502	Nominal RA [deg]
dec_nom	-5.0038576505683	Nominal Dec [deg]
roll_nom	319.38433391274	Nominal Roll [deg]
revision	2	Processing version of data
ontime	8204.7999694347	Sum of GTIs [s]
livetime	8100.9058518843	Livetime [s]
ontime4	8204.7999694347	Sum of GTIs [s]
ontime5	8204.7999694347	Sum of GTIs [s]
ontime6	8204.7999694347	Sum of GTIs [s]
ontime7	8204.7999694347	Sum of GTIs [s]
ontime8	8204.7999694347	Sum of GTIs [s]
ontime9	8204.7999694347	Sum of GTIs [s]
l2events	989070	Number of level 2 events

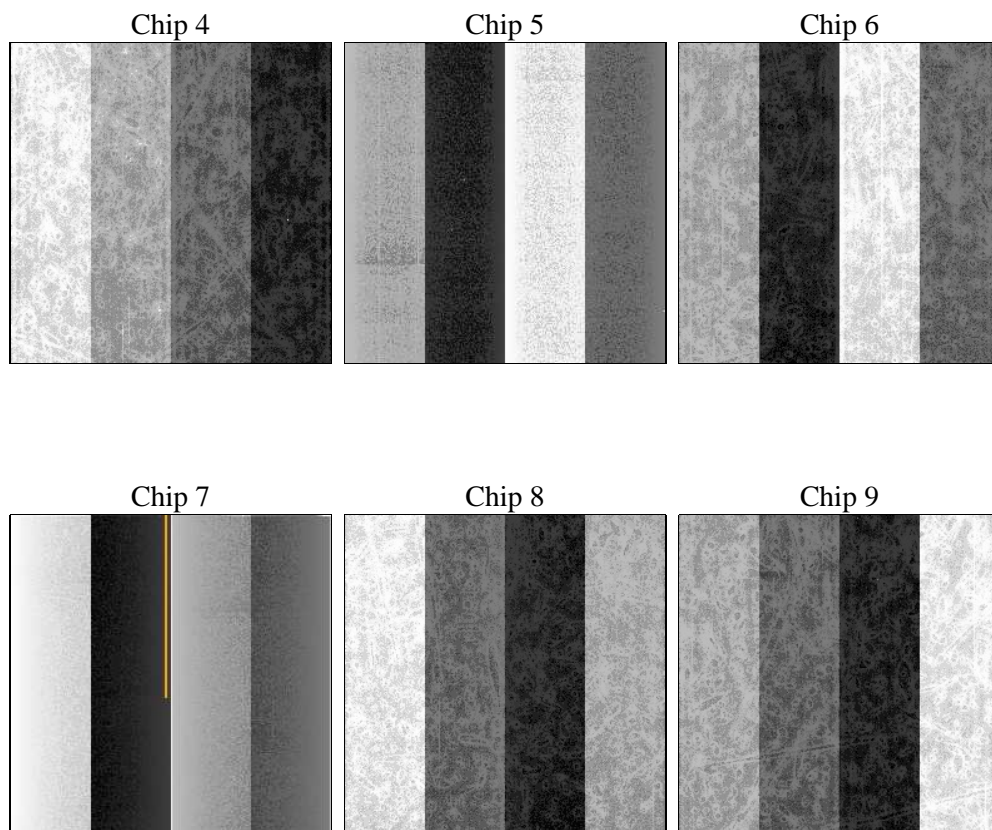
2 OBI

2.1 OBI

2.1.1 Images



2.1.2 Bias



2.1.3 Parameters

obi_num	0	Obi number	sched_exp_time	0.0	[s] Scheduled observation exposure time
ascdsver	8.4.3	Processing system revision	ontime	8204.7999694347	Sum of GTIs [s]
caldsver	4.4.8	 	ontime4	8204.7999694347	Sum of GTIs [s]
date	2012-03-25T02:13:13	Date and time of file creation	ontime5	8204.7999694347	Sum of GTIs [s]
revision	2	Processing version of data	ontime6	8204.7999694347	Sum of GTIs [s]
			ontime7	8204.7999694347	Sum of GTIs [s]
			ontime8	8204.7999694347	Sum of GTIs [s]
			ontime9	8204.7999694347	Sum of GTIs [s]
			l1events	1472545	Number of level 1 events

2.1.4 Events

	ccd 4	ccd 5	ccd 6	ccd 7	ccd 8	ccd 9		ccd 4	ccd 5	ccd 6	ccd 7	ccd 8	ccd 9
level 1 events	235931	242654	241819	253826	260895	237420	grade 0 events	93773	33920	93580	44896	98599	91242
rejected events	74875	64830	69053	58727	77466	71565		39%	13%	38%	17%	37%	38%
rejected %	31%	26%	28%	23%	29%	30%	grade 1 events	827	195	578	176	590	603
								0%	0%	0%	0%	0%	0%
							grade 2 events	25819	65646	30513	42786	32876	29137
								10%	27%	12%	16%	12%	12%
							grade 3 events	10902	10036	11175	19348	12285	10841
								4%	4%	4%	7%	4%	4%
							grade 4 events	10937	9761	10921	19349	12471	10856
								4%	4%	4%	7%	4%	4%
							grade 5 events	4091	9405	4094	9718	5190	4518
								1%	3%	1%	3%	1%	1%
							grade 6 events	21027	59992	28076	70373	28830	25280
								8%	24%	11%	27%	11%	10%
							grade 7 events	68555	53699	62882	47180	70054	64943
								29%	22%	26%	18%	26%	27%

2.2 Compared Parameters

Parameter	Planned	Actual
Instrument	ACIS	ACIS
Detector	ACIS-456789	ACIS-456789
Grating	NONE	NONE
Data mode	FAINT	FAINT
Observation mode	SECONDARY	SECONDARY
[deg] Pointing RA	0	116.0284632950248
[deg] Pointing Dec	0	-5.003857650568323
[deg] Pointing Roll	0.0	319.3843339127396
[mm] SIM focus pos	-0.684267	-0.7809083437167272
[mm] SIM defocus	0	0.7524282956875696
[mm] SIM translation stage pos	-190.132523	250.466033080201
[mm] SIM translation stage offset	0	-0.01005468664627074
[s] Observation start time (MET)	255222758.706478	255222757.68148
Observation start date	2006-02-01T23:12:39	2006-02-01T23:12:37
[s] Observation end time (MET)	255245355.857526	255245354.83252
Observation end date	2006-02-02T05:29:16	2006-02-02T05:29:14
Read mode	TIMED	TIMED

Parameter	Planned	Actual
Obspar format version number	7	7
Obspar file type	PREDICTED	ACTUAL
Obspar update status	NONE	UPDATED
On-chip summing requested	N	N
Subarray requested	NONE	NONE
Alternating exposures requested	N	N
[s] Primary exposure time	3.2	3.2

2.3 Star Slots

2.4 FID Slots

A Summary

A.1 Status

V&V Scientist	Jen Lauer
V&V Date (YYYY-MM-DD)	2012.03.27
V&V Edition	1
V&V Disposition and Status	OK
V&V Charge Time	8.2047999694347

A.2 Comments